



Cambridge Crystal Ball

Published by the National Cambridge Collectors, Inc. as a resource which informs, invites and inspires people to encourage the continued preservation of the glass produced by the Cambridge Glass Company of Cambridge, Ohio for future generations.

Issue No. 586

ISSN 2474-5987

March 2025

Copyright © 2025 National Cambridge Collectors Inc., All Rights Reserved

March Auction and Membership Meeting

The detailed auction listing and information was printed in the January Crystal Ball.

Date/Time:

Saturday March 15, 2025, preview at 8:30 am with auction starting at 9:30 am. Admission fee \$2.

Location:

Pritchard Laughlin Civic Center, 7033 Glenn Hwy, Cambridge, OH 43725.

Absentee Bids:

Anyone wishing to place an absentee bid, may do so by mailing their bids to the Auction Committee. All bids must be received by Thursday March 13 prior to the auction to be eligible.

Photos:

Photos of all the items in the auction are posted at <https://cambridgeglass.org/auction/auction2025>

Membership Meeting:

Friday evening at 7:30, followed by a preview of the auction glass.



AUCTION

What's Inside

March Auction and Membership Meeting	1
President's Message	3
Annual Museum Cleaning Enjoyed Online	4
Minutes of the October 19, 2024 Fall Meeting..	7
The 2024 Annual Fund & Listing of Benefactors	8
2025 Hotel Information.....	12
Convention 2025: The Nifty Fifties	13
Zoom & Tell January: Favorites from 2024.....	14
Cambridge Curiosities	15
eBay Report	18
Membership Corner	20
Wanted: Glass Dash	21
New Members.....	21
In Memoriam	21
NCC Events	22

Special Museum Hours

Friday, March 14 from 10 am – 4:00 pm

Saturday, March 15 from 2:00 pm – 5:00 pm.

We hope to see you during the auction weekend!

National Cambridge Collectors, Inc.

PO Box 416 Cambridge, OH 43725-0416

Board of Directors

	2025	
Ken Filippini	Freeman Moore	Christine Smith
	2026	
Julie Buffenbarger	Doug Ingraham	Frank Wollenhaupt
	2027	
Marti DeGraaf	Lindy Thaxton	Lynn Welker
	2028	
Cindy Arent	Les Hansen	Mike Strebler

Officers

President	Doug Ingraham
Vice-President	Julie Buffenbarger
Secretary	Christine Smith
Treasurer	Mike Strebler
Sergeant-at-Arms	Les Hansen

Committees

Endowment	Membership
Finance	Technical Decision
Property	Digital Strategy
Strategic Planning	Digital Preservation
Governance	Development

Member Services

Vice President

Member Relations
Convention
Member Social Media
Glass Dash
Glass Show
Study Groups
Webmaster

Freeman Moore
Freeman Moore, Membership Database
Julie Buffenbarger & Christine Smith
David Ray
Larry Everett & Frank Wollenhaupt
David Ray, Mike Strebler, Jack Thompson
(open)
David Adams

Development

Vice President

Campaigns

Events

Projects
Publicity

Mike Strebler
Ken & Jane Filippini, Annual Fund Directors
Larry Everett, Director of the Heritage Society
Lindy Thaxton,
Lynn Welker, Auction Managers
Susan Everett & Frank Wollenhaupt, Jewelry
Convention: Jonathan Fuhrman

Education

Vice President

Crystal Ball

Les Hansen
Freeman Moore, Editor

Museum

Vice President

Public Operations
Facilities & Grounds

Inventory Management
Collections
Museum Gift Shop

Archivist
Museum Social Media
Community Relations

Cindy Arent
Lindy Thaxton, Director of Public Operations
Cindy Arent,
Joe Miller,
Lindy Thaxton
Lindy Thaxton, Director of Inventory Management
Lynn Welker, Director of Collections
Cindy Arent, Gift Shop Manager
Lynn Welker, Gift Shop Manager
Lindy Thaxton
Cindy Arent, Director
Cindy Arent

Administration

Vice President

Accounting & Finance

Julie Buffenbarger
Lisa Neilson, Office Manager

MEMBERSHIP QUESTIONS?

Please send address changes to:
Membership - NCC
PO Box 416
Cambridge, OH 43725-0416
or by e-mail to:
membership@cambridgeglass.org



CONTACT US

NCC Business Manager
Phone: 740 432-4245

businessmanager@cambridgeglass.org



Doug Ingraham, President

e-mail: president@cambridgeglass.org

Christine Smith, Secretary

e-mail: secretary@cambridgeglass.org

Heritage Society

Ensuring the preservation mission of the NCC through planned giving and estate bequests.

Members of The Heritage Society are those who have included the NCC in their wills or estate plans, thus providing the organization with a secure future.

The mission of The Heritage Society is to foster smart estate planning and to assure that NCC is not forgotten as an important beneficiary. Any pledge is meaningful and appreciated.

All Cambridge collectors - both current and future - will benefit from, and be grateful for your support.

Let us know how we can help with your future plans.

Museum:

National Museum of Cambridge Glass



Like us on Facebook

Member: Cambridge Glass/National Cambridge Collectors

NCC Website: www.CambridgeGlass.org

NCC Museum Website: www.CambridgeGlassMuseum.org

Cambridge Glass Library Website: mvsg.CambridgeGlass.org



PRESIDENT'S MESSAGE

MVSG website name change

Once again, I want to let everyone know that the website mvsg.org is now mvsg.CambridgeGlass.org

As I mentioned last month in the President's message; due to technical difficulties we will lose ownership of the domain mvsg.org later this month. However, all the data on that site and search capabilities of the site have been transferred to mvsg.CambridgeGlass.org

Shortly, as part of the new website project, all data with enhanced search capabilities will be available as a part of the new website we are calling **The Virtual Museum**. Though the new website project is progressing a little slower than we would like, it is coming along nicely. We have finished our first round of reviews of the design and capabilities, and it looks good. We have a solid foundation. Now the data teams are moving all of the data from our current, out-of-date and end-of-life/support databases to new databases in the cloud. The data teams are ensuring that all the data is categorized as it was on mvsg.org and cambridgeglass.org so that we don't lose any of our search capabilities. All of our digital photos, catalogues, sales circulars, turn cards, trademarks, patents, marketing literature, employee data, etc. will all be available for glass enthusiasts, historians, and genealogists to research. The firm we are working with to create this new website refers to it as one of their Big Kahuna websites because of the amount of data that will be in our virtual museum. We are protecting and preserving a huge amount of American History and Culture for use by future generations.

As I sit here today typing in the subzero temperatures, I think of Spring just around the corner. One of the key events that starts the Spring season is NCC's annual auction. I hope you can join us for the event in Cambridge or use our absentee bidding procedures

if you cannot join us live. This auction has something for everyone! The Board also approved a committee to review our auction and make recommendations to the Board on things we can improve in 2026. It is healthy to review what we are doing periodically and see what we should keep doing and what we should change. If you have thoughts on things we should keep or change with the auction, please email me at president@CambridgeGlass.org

We will be finalizing our slate of our candidates for election to the NCC Board of Directors at our Spring Membership meeting on Friday, March 14th. So, if you would like to come make a difference in NCC, you still have time to come forward and express your interest in running for the Board of Directors.

Finally, I ask that you all take a moment to stop and remember an NCC lifetime member, Carl Beynon. Carl passed away this past month, preceded in death by his wife, Shirley Beynon, also an NCC lifetime member. Carl volunteered countless hours for NCC and was a true friend of Cambridge. He helped us build and maintain our facilities, maintain our inventories of molds/tools/equipment, he helped staff the museum, and countless other tasks. He was a true NCC ambassador. But, more importantly, he was one of those rare people I call a great human being. In honor of Carl, go out of your way and do something nice for someone this week.

Let's remember to continue to honor our past as we build our future.

*Cheers,
Doug*

president@CambridgeGlass.org

Annual Museum Glass Cleaning Enjoyed Online

By Cindy Arent

It's time to celebrate because again this year we made it through the entire cleaning of the collection without a single break, ding or chip. We always breathe a sigh of relief as the last piece is placed back into the case. "The Annual Cleaning of the Cambridge Glass" takes place in January and February when the museum is closed. For the past few years, I have been posting photos of the glass that has been cleaned during the process on the museum Facebook page with great response. Comments from people that follow the posts have been much appreciated by the cleaning crew.

This year I also posted a couple short videos and reels. The post with the most "Likes" was the Near Cut video with 607. It has been such fun reading the comments posted by people about how much they love Cambridge Glass and look forward to visiting the museum. Someone also asked for information about the June Glass Show & Sale.

Snacks and lunch are also an important part of each day. It gives us something to look forward to! Many thanks to Janet Steury for providing wonderful snacks and pizza and Jeff Eggers for our Theo's Restaurant lunches. Also, thanks to Sharon Bachna for the cookies, Elaine Thompson for the cinnamon bread and Tarzan Deel. These thoughtful gestures are much appreciated by the cleaning crew!

In addition to cleaning the glass and showcases, maintenance issues also need to be addressed. Weather stripping on the front doors was replaced and the kitchen refrigerator stopped after 24 years. NCC board member Les Hansen donated it before the museum opened. When I reported it during a board meeting, Les stepped up once again to donate a new one. It was purchased locally at Anker's Appliance and delivered free of charge. They even removed the old one and gave me time to clean up

under and behind it before they brought in the new one. Thank you, Les!

Planning the advertising and marketing strategy for 2025 also occurs in the winter months and began in late 2024. The museum already has nine motorcoach groups or events booked for 2025. Many wonderful co-op marketing opportunities are also offered by the Cambridge/Guernsey County VCB each year to area attractions. The National Museum of Cambridge Glass has been included in an *America 250 Itinerary: Creativity and Innovation* by Experience Columbus.



Everything must be cleaned.
Cindy Arent is very much a hands-on cleaner.

Plans are ramping up for the America 250 celebration next year in Ohio and around the country. A recent press release from the Cambridge/Guernsey County VCB stated, “In the lead-up to America’s 250th anniversary, the Visitors & Convention Bureau announced today that Mosser Glass and the National Museum of Cambridge Glass have partnered with the America 250-Ohio Commission to be official stops on its new Ohio Creativity Trail. This experiential driving trail of 108 sites across Ohio showcases the Ohio’s past and present writers, musicians, artists and other creatives who have made significant contributions to artistic expression. Step into the world of Cambridge Glass at the National Museum of Cambridge Glass, where over a century of artistry and craftsmanship comes to life. From stunning art deco patterns to vibrant hues, the museum offers an intimate look at the legacy of the Cambridge Glass Company, showcasing intricate designs, rare glass pieces and original production molds. “We’re incredibly proud to preserve and share the history of Cambridge Glass,” says Cindy Arent, Director of the National Museum of Cambridge Glass. “Every piece tells a story of innovation and artistry, and we’re honored to offer a space where people can connect with this exceptional heritage.” Whether you’re a seasoned collector or a first-time visitor, the National Museum of Cambridge Glass is a must-see destination, offering a captivating look at the history and lasting influence of American glassmaking.”

The Museum officially opens for the new season on Wednesday, April 2nd. However, we will be open during the March Auction weekend:

Friday, March 14th from 10:00 a.m. – 4:00 p.m.

Saturday, March 15th from 2:00 p.m. – 5:00 p.m

We’ll be ready and waiting for you.

We hope to see you auction weekend!



Jack and Elaine Thompson helped with some of the cleaning activities.





We will always remember NCC Lifetime Member Carl Beynon, who always had a smile and kind words for everyone he met. Carl passed away February 11, 2025 at 91. He spent countless hours on museum projects and making Cambridge jewelry. Carl had a way of making hard work fun and never complained. I remember the day we were restoring an original Cambridge Glass Company iron cart. Carl had it up on a hoist and I crawled under it with a can of wax without telling him, oops! Carl was truly one of a kind and will be greatly missed by his family, NCC friends and the community.

Sandi Rohrbough helped with cleaning activities.



National Cambridge Collectors, Inc.

Minutes of the October 19, 2024 Fall Meeting

President Doug Ingraham called the meeting to order at 6:33 pm ET with about 35 members in attendance. The meeting was held in the upper level of Theo's Restaurant in Cambridge Ohio and also on Zoom.

Secretary's Report - Christine Smith

The minutes of the June Annual Meeting were published in the October Crystal Ball. Elaine Thompson made a motion to approve the minutes as published. Frank Wollenhaupt seconded the motion. All ayes. No nays. No abstains.

Treasurer's Report - Mike Strebler

Endowment fund currently on Friday at 1.262 million. The Finance committee which oversees the finances met on October 16. Mike reported that NCC funding is primarily from gifts and glass sales at the museum.

So far this year's gifts to NCC is \$56,000. \$47,000 from annual fund came from donors who gave \$100 or more. \$25,000 came from donors at the President circle and Japonica levels. Second largest source from gift shop at museum. \$23,500 so far this year.

The original budget had anticipated to transfer \$25,000 to the endowment fund but transfer will not occur to provide funding for the new website.

Website expenditure: digital property is a necessary asset for this millennium. Will replace NCC website and integrated with mvsg.org site. The website will provide options to electronically register for events and learn information on NCC with beautiful photos. NCC must have an outstanding website as well as reach out to the digital platforms and expand those including Facebook, Instagram, You Tube etc.

Operational Vice-President's reports:

Administration - Julie Buffenbarger

1. Convention 2025 – 50's theme. Upcoming information in the new year. Thank you to all who make this a success.
2. Zoom and Tell. Some very interesting pieces have been shown on Zoom and Tell. Thank you to David, Les, Jack and Mike for all their assistance! Reaches an outside audience that we cannot always reach.
3. Assets – NCC owns four buildings: Museum, storage building, yellow building, and brick building. Goal to evaluate the buildings and make sure maintenance is getting done as needed.

Development - Mike Strebler

Importance of funding NCC. Primary source is gifts. Looking at how we fundraise and how we thank individuals who give. Working on a case statement. Annual fund is our life blood. Thank you to all who give.

Education - Les Hansen

Zoom and Tell – Julie has done a great job as the moderator. David Ray writes the articles for the Crystal Ball. Plans to expand this in other directions.

New Website will be used to upload all programs. Website will really expand what NCC can do for education.

The MVSG study group meets on the second Sunday of the month via Zoom. All are welcome to attend.

Fall meeting: David Ray presentation at the Fall meeting will be recorded. Thank you to Lynn Welker for bring and brag.

Member Services – Freeman Moore

NCC had 643 members in June, with a slight increase to 654 today. However, 50 have not renewed so far this year.

Thank you Elaine, for leading the Membership committee which concentrates on retention and recruiting. Elaine to chair the nominating committee for 2025 board elections

Museum – Cindy Arent

Museum building is being regularly maintained. Continue to network with companies including Cambridge Chamber groups. 152 ornaments made. Working on setting up Dickens Victorian village for this year. Cambridge glass is included in the display. There will be Primrose, Azurite, and Helio pieces. Participated in the Chocolate Walk, coordinating with the Mosser Glass Company at the museum.

Museum closes on Oct 31 for the season. Holiday hours will be Friday and Saturday noon - 4 starting Nov 1. New dining room is Crown Tuscan with silver seahorses. Monthly volunteers to polish the silver.

Old Business – None

New Business - None.

Thank you to Lynn, David, and Les for a great job tonight!

Adjournment: Jack Thompson made a motion. Marti DeGraaf seconded the motion. Meeting adjourned at 7:07 pm . ■

The 2024 Annual Fund and Listing of Benefactors

by Freeman Moore, Membership

NCC, like most other non-profit organizations, relies on the generosity of its membership for support. Each of us makes choices when we prioritize our charitable giving, whether it is your church, alma mater, or other organizations you feel passionate about. NCC is very fortunate to have been included in charitable giving plans during the past year. NCC is an IRS recognized 501(c)(3) charitable organization and your donations may be tax deductible.

NCC exists through member giving. We use an Annual Fund system to raise funds and keep track of the gifts we receive. All unrestricted gifts to NCC are included in the Annual Fund using calendar year cash counting. If there is more than one gift in a year, the gifts are aggregated when recognizing the member.

NCC sends out Annual Fund materials to everyone once a year, i.e. everyone has the same renewal date. The mailing takes place in early April and includes the balloting process for board of director elections. In 2024, we also did follow-up mailings in July, October and December. There are new Friends each year, and some that we don't hear from and they become "inactive", but the majority of the supporters of the Annual Fund are there year-in and year-out. We have a challenge to increase our membership numbers with new Friends. We need your help to continue to promote the benefits of NCC and to grow our membership.

The Annual Fund enables us to operate the museum, publish the Crystal Ball, and carry out our mission

activities of education and preservation. Most other activities are self-supporting such as convention, auction, and quarterly meetings. We also want to grow the Endowment Fund to sustain the organization into the future. The Endowment Fund is also a nice way to remember former Friends by making tribute gifts in their honor. NCC also receives gifts for specific purposes that can only be used for the purpose indicated. These restricted gifts are recognized separately and not included in the Annual Fund.

The Annual Fund recognizes member philanthropy using gift recognition levels. The number of households participating at the Patron level (\$35) is 184. The Benefactor levels (225) are amazingly consistent with almost all of last year's benefactor contributors renewing this year. Every year's Annual Fund has been a great tribute to the Friends of Cambridge in their support of Cambridge Glass and its history. A tabulation of all results for the year is included below. NCC thanks you for your contribution.

NCC is a collective of glass friends who enjoy and appreciate the artistry of the variety of glass products produced by the Cambridge Glass Company. We are the only group of individuals dedicated to Cambridge Glass. As such, we are proud to recognize all *Friends of Cambridge* who contributed at the Benefactor level as of December 31, 2024.

	Households	Amount
President's Circle \$1,000	19	\$19,000
Japonica \$500	18	9,5000
Mardi Gras \$200	53	10,785
Century \$100	135	12,985
Benefactors	89% 225	52,270
Patrons	11% 184	7,240
	409	58,885

The 2024 Annual Fund Listing of Benefactors

Doris Durham	Century	Alabama	Judith Clay	Century	Georgia
Trace Parish & Richard Reed	Mardi Gras	Alabama	Michael & Sandra Van Gorder	Century	Georgia
Mike & Julie Humphreys	Century	Arizona	Tim & Nancy Crose	Century	Illinois
Janice Kastner	Century	Arizona	Toby Mack & Marti DeGraaf	Mardi Gras	Illinois
Tom McClean	Century	Arizona	Wayne Gerlock	Century	Illinois
			Grant & Dolores Giesler	President's Circle	Illinois
Clyde Coleman	Century	Arkansas	Frank & Sue Gready	Century	Illinois
JoAnn Coleman & Brian Reddick	Century	Arkansas	Nancy & Herb Kaiser	Century	Illinois
			Jeff & Janice Larson	Century	Illinois
Gail & David Abbate	Mardi Gras	California	Shirley Launer	Century	Illinois
Chuck Lieb & Frank DeLouise	Century	California	Roy Peterson & Dawn Carlson	Century	Illinois
Ann Mang	Japonica	California	Dana Stephens	Century	Illinois
John Maves	Century	California			
Janice & Jim Miller	Mardi Gras	California	Marjorie & Nathan Farlow	President's Circle	Indiana
Dale & Barbara Moody	Century	California	Sherry & Wayne Hobson	Mardi Gras	Indiana
John & Philip Parr	Century	California	Elizabeth Sarchet	Century	Indiana
Scott & Lynne Ellen Sanders	Century	California	Janet Wasson	Century	Indiana
Wendy Steelhammer	Japonica	California			
Judy Veteran	Century	California			
			Mrs. Keith Ham	Century	Iowa
Allan Sears	Century	Canada	Tom Keith	Century	Iowa
			Milton & Rosemarie Piontkowski	Mardi Gras	Iowa
Millie & Roger Loucks	President's Circle	Colorado	Craig & Gloria Todd	Century	Iowa
John & Kay Shunk	Century	Colorado			
Bill & Karen Stranathan	Century	Colorado	Marcy Allenbaugh	Japonica	Kansas
			Ann & Dennis Hall	Century	Kansas
Kathy & Shelby Nussbaum	Japonica	Connecticut	Chris & Barb Settele	Mardi Gras	Kansas
Pam Wasylik	Century	Connecticut			
			Gloria Broadbent	Century	Louisiana
Jim Braue	Mardi Gras	Florida	Ralph & Linda Warne	Century	Louisiana
Lynn Cartee & April Latta	President's Circle	Florida			
			Janet Smith	Century	Maryland
Paul DeVenzio	Century	Florida			
Lynn Hagen	Mardi Gras	Florida	Hank & Janet Moran	Century	Massachusetts
David & Kathy Lake	Mardi Gras	Florida			
Jon Pierson	Mardi Gras	Florida			
Lynda & William Randolph	Century	Florida	Joanne & Stan Aldrich	Century	Michigan
Linda & Bryan Roberts	Century	Florida	Bill & Cynthia Alexander	Mardi Gras	Michigan
Luene Torner	President's Circle	Florida	Brent & Hedi Berry	Mardi Gras	Michigan
			Janet & Louie Borresen-Hector	Century	Michigan

The 2024 Annual Fund Listing of Benefactors

Artie Charlton	Century	Michigan	Mary & Jeff Czech	Century	New York
Alice & Calvin Miller	Century	Michigan	Janice & Bruce Harvey	Century	New York
Deborah Mohatarem	Mardi Gras	Michigan	Cynthia & Ray Huntley	Century	New York
Don Russell	Mardi Gras	Michigan	Gloria & Michael Morris	President's Circle	New York
David Slade	Mardi Gras	Michigan	Barbara Ritchin	Japonica	New York
Jeff Eggers	Century	Minnesota	Melissa, Karen & Max Treier	Japonica	New York
Les Hansen	Mardi Gras	Minnesota	Gerald Vaccarella	Century	New York
Doug Ingraham & Randy Johnson	President's Circle	Minnesota	Robert Ward & Michael Morgado	Century	New York
Alice Myrin	Century	Minnesota	Jennifer, David, Sarah & Leath Orme-Zavaleta	Century	North Carolina
Elaine Storck	Century	Minnesota	Beth & David Porritt	Mardi Gras	North Carolina
Brad Allen & Gene Cooper	Japonica	Missouri	Beverly & Will Acord	Century	Ohio
Nancy Finley	President's Circle	Missouri	D. Scott & Kathryn L. Adams	Mardi Gras	Ohio
Dr. Carter Glass	Japonica	Missouri	Sue Allman	Century	Ohio
Marilyn Keck	President's Circle	Missouri	Cindy & Mike Arent (Lifetime)	Japonica	Ohio
Ralph Litten	Century	Missouri	Robert & Ann Baird	Century	Ohio
John & Peggy Scott	Century	Missouri	Kathleen Bennett	Century	Ohio
Ruth A. Smith	Century	Missouri	Rich Bennett & Bobbie Henderson	Century	Ohio
Janet & Jack Steury	Mardi Gras	Missouri	Carl & Shirley Beynon (Lifetime)	Century	Ohio
Lyndon & Susie Tummons	Mardi Gras	Missouri	Vernon, Brenda & Troy Beynon	Century	Ohio
Irene Janson	Century	Montana	John & Candace Bowen	Mardi Gras	Ohio
Richard & Helen Rietz	Japonica	Montana	James Brown	Century	Ohio
Marcie Bergquist	Century	Nebraska	Scott & Joan Brown	Century	Ohio
Linda Christensen	Century	Nebraska	Phyllis Bryan	Mardi Gras	Ohio
Joann & Bill Hagerty	Century	Nebraska	Julie Buffenbarger	Century	Ohio
Bruce Stanton	Century	Nebraska	Sandra & Jim Buffenbarger	Mardi Gras	Ohio
Linda & David Adams	Mardi Gras	Nevada	William & Janet Carlson	Mardi Gras	Ohio
RaNae & Dennis Travers	Century	Nevada	Aaron Cochran & Jack Long	Century	Ohio
Ken & Jane Filippini	President's Circle	New Jersey	Cathy & Ed Conaway	Century	Ohio
Sharon & Ronald Hermone	Mardi Gras	New Jersey	Julie & Tom Davey	Century	Ohio
Walter & June Lee	Century	New Jersey	Lawrence & Susan Everett	President's Circle	Ohio
Wendy Loss	Century	New Jersey	Charles Eyen & Sherry Crawford-Eyen	Century	Ohio
Allan & Sally Cohen	Mardi Gras	New York	Carole & David Francis	Century	Ohio
Michael, Barbara & Mary Colella	Century	New York	Lynne Franks	Century	Ohio
			Kevin Galloway	Century	Ohio

The 2024 Annual Fund Listing of Benefactors

Regina, Mark & Geoff Gerko	Japonica	Ohio	Jennie Wilson	Japonica	Ohio
Grant & Pat Hafley	Japonica	Ohio	John Wolfe	Century	Ohio
Dean Hivley & Darla Carpenter	Century	Ohio	Frank & Vicki Wollenhaupt (Lifetime)	Mardi Gras	Ohio
Darrell & Linda Howell	Century	Ohio	Barbara Wyrick	Japonica	Ohio
Patty & Dan Igoe	Century	Ohio	Sara Stewart	Mardi Gras	Oklahoma
Bernice & Jill Jefferis	Mardi Gras	Ohio	Mark Thompson	Mardi Gras	Oklahoma
Jerry & Ann Jones	Century	Ohio	Marlene & James Krout	Century	Oregon
Louise & Dennis Jones	Century	Ohio	Robert & Karen Arnold	Mardi Gras	Pennsylvania
Karla Kiiikka	Century	Ohio	Brad & Denise Bernstein	Century	Pennsylvania
Jeff & Debbie Leonard	Mardi Gras	Ohio	Elio Bracco & David Keith	Century	Pennsylvania
Connie Lodge	Mardi Gras	Ohio	Diane & Dean Camp	Century	Pennsylvania
Mandy & Michael McGlumphy	Century	Ohio	Karen Friedly	Century	Pennsylvania
Daniel Miecznikowski	Century	Ohio	Melinda Orme	Century	Pennsylvania
Sharon & Joe Miller	Mardi Gras	Ohio	John Walter, Jr.	Century	Pennsylvania
Dale & Kelly Milligan	Century	Ohio	Richard L Walton Jr.	Century	Pennsylvania
Nancy Misel	Japonica	Ohio	Helen Klemko	President's Circle	South Carolina
Jane & Paul Morton	Mardi Gras	Ohio	Arthur Bennett Orme, Jr.	Century	South Carolina
Michael & Nell Murrell	Century	Ohio	Glen & Carolyn Robinson	Century	South Carolina
Penelope Paoliello	Mardi Gras	Ohio	Stuart Sandler & Monty Michelsen	Mardi Gras	South Carolina
Joey & Vera Pirl	Century	Ohio	Douglas & Linda Warren	Japonica	South Carolina
Charles Tandy & Bret Price	Century	Ohio	Helen Morrow & Michael Bronstein	Mardi Gras	Tennessee
Emily Ranchel	Century	Ohio	Suzanne Wagar	Mardi Gras	Tennessee
David Ray	President's Circle	Ohio	Sue & Bob Cameron	Century	Texas
Ken & Judy Rhoads	Mardi Gras	Ohio	Louise Carson	Century	Texas
Linda Rhodes	Mardi Gras	Ohio	Phillip & Rosalba Cook	Century	Texas
Dorothy & Squeek Rieker	Century	Ohio	Mary & Earl Forbes	Mardi Gras	Texas
Sandy Rohrbough	Century	Ohio	Alicia Garrett	Century	Texas
Jeff, Jill, Randall & Patrick Ross	Mardi Gras	Ohio	David & Lisa Helm	Mardi Gras	Texas
Carol Simons	Mardi Gras	Ohio	Kathleen Klaviter	Century	Texas
Sally Slattery	Mardi Gras	Ohio	Max Miller	Century	Texas
Christine & Timothy Smith	Century	Ohio	Freeman & Jeannie Moore	President's Circle	Texas
Beverly & George Stamper	Century	Ohio	Gwenell & Scott Pierce	Mardi Gras	Texas
Lyle & Linda Stemen	President's Circle	Ohio			
Mike & Lisa Strebler	President's Circle	Ohio			
Lindy Thaxton	Century	Ohio			
Elaine & Jack Thompson	President's Circle	Ohio			
Allen & Kay Tuttle	Century	Ohio			
Lynn Welker (Lifetime)	Century	Ohio			

The 2024 Annual Fund Listing of Benefactors

Amy & Kay Waldorf	Century	Texas
Susan Warner	Century	Texas
Cricket Bauer	Japonica	Virginia
Roberta Bennett	Mardi Gras	Virginia
Shelley Cole & Alex Citron	Century	Virginia
Tarzan Deel Jr.	President's Circle	Virginia
Robert & Barbara Henkel	Japonica	Virginia
Jim Jones	Japonica	Virginia
John & Patricia Lanning	Mardi Gras	Virginia
Greg Vass	President's Circle	Virginia
Charles McKinney	Century	Washington
Robert Marcus	Century	Washington DC
Jim & Sherri Mears	Mardi Gras	West Virginia
Sue Mitchell	Century	West Virginia
Gary Brammer	Century	Wisconsin
Michael Lee	Century	Wisconsin
Chyan Wu	Century	Wisconsin
Marcia & Roger Maertens	Century	Wyoming

Thank you 

Please check over the Benefactor List carefully. If we have made any error – name, spelling, gift level, something else – please let us know at this email: Membership@cambridgeglass.org. We regret any errors that might have been made and look to make it right for you.



2025 Hotel Information

Room rates have been negotiated with Hampton Inn, Fairfield Inn, Holiday Inn Express, and Best Western. Please call the hotel directly using the phone numbers given.

Hotels fill quickly, so it's crucial to reserve your room before it's too late.

Hotel	Room Size	NCC Rates	
		March 2025	June 2025
Best Western 740-435-0035	Two Queens	85	85
	King	89	89
Fairfield Inn 740-435-8700	Std Rate	129	119
	Queen or King		
Hampton Inn 740-439-0600	Two Queens	85	85
	King	89	89
Holiday Inn Express 740-421-4988	Std Rate	129	129
	Queen or King		

The Nifty Fifties

Julie Buffenbarger, Joey Pirl & Christine Smith / Convention Co-Chairs

The 1950s were not just a decade but a significant era of prosperity. It was also called the boom era, a term historians use to describe the multitude of advancements in the 1950s: the booming economy, the booming suburbs, and most of all, the so-called “baby boom.” The 1950s also saw the growth in the popularity of television and the introduction of the big boom electric guitar, which launched the rock and roll era.

While the boom of the 1950s kicked off “the Golden Age of American Capitalism,” it also began an era of conflict. The civil rights movement, the crusade against communism at home and abroad, and the Korean War exposed underlying divisions in American society.

The 1950s were also a time of struggle for the Cambridge Glass Company. While the Cambridge Square pattern won top honors across the United States for its modern design in 1950, the competition for foreign and machine-made glass began taking its toll. Unable to compete with mass-produced glassware and with the decreasing demand for fine handmade glassware, Cambridge Glass Company closed during the summer of 1954, and in the spring of the following year (under new ownership and management), it reopened. However, financial difficulties persisted, and after several ownership changes, the factory closed for good in 1958. In 1960, Ohio glass manufacturer Imperial acquired the company’s name, molds, and other assets.

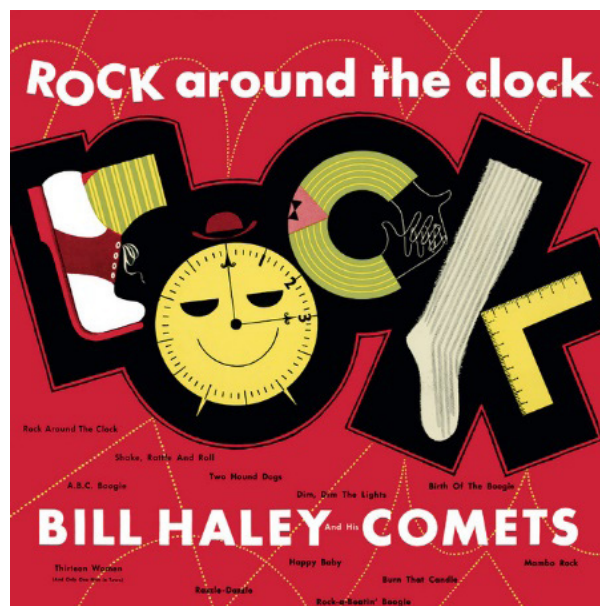
However, the company’s resilience was evident. During the 1950s Cambridge produced several new lines (Cambridge Arms, 1656 line, #1528 Vase [bowling pin], #1529 Decanter, Jenny Lind, Modern, and Square); colors (Blue Cloud, Late Pink, Late Pistachio, Late Mulberry, Mardi Gras, Milk, Smoke, Strawberry, Sunset, and White Rain), decorates (Platinum Band, Silver Leaves, Triumph, Victory, Wedding Band, and Woodlily); rock crystal etchings

(Corsage, Dehli, Joan of Arc, Rondo, and Tropical); and stemware (Allegro, Caprice 301, Circle, Fortune, Melody, Queen Mary Stem, Simplicity, Sweetheart, and Today). While the listing is not exhaustive, it provides a glimpse of the Cambridge Glass Company’s continued innovation under less-than-optimum conditions. Many of these items are rare and difficult to find, making them highly sought after and at the top of every collector’s list.

If you are searching for glassware to complete your collection, there is no better place to look than the National Cambridge Collectors’ Convention and Glass Show.

Join us in Cambridge, Ohio, to “Rock Around the Clock” at this year’s NCC convention. The convention begins on Thursday, June 26, 2025, and concludes on Saturday, June 28, 2025. Come dressed in your favorite 50s attire for our “Fabulous Fifties” dinner on Friday evening.

More details on the NCC convention and 50s fashion will be posted on the website and in forthcoming Crystal Ball issues. ■



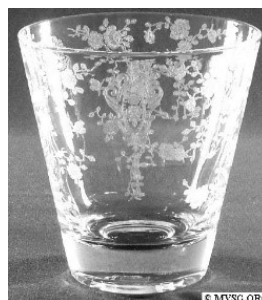
Zoom & Tell January: Favorite Purchases from 2024

by David Ray

Back by popular demand, the January Zoom & Tell featured collectors sharing up to five of their favorite glass purchases from 2024. It was obvious by the items shared that NCC members are actively shopping for glass and most were extremely successful last year. In total, guests shared more than 40 amazing pieces of Cambridge glass. In addition to Cambridge glass, a few pieces of Libby glass were shared. I was able to find photos of many items, but several are not pictured in the Cambridge glass photo albums.

The March Zoom & Tell program, led by Jack Thompson, we will focus on two-light Cambridge candlesticks. The program is scheduled for Tuesday, March 11 at 8:00 PM ET. Search your display cases for items to share at the March program. Everyone is looking forward to seeing and learning about the variety of two-light candlesticks produced by the Cambridge Glass Company. In addition, candlesticks from other glass companies can be shared. If you have missed any of the Zoom & Tell program, you can view them on our YouTube™ channel <https://www.youtube.com/@cambridgeglasscollectors>

Until next time, happy collecting!





Cambridge Curiosities

By Jack Thompson Chapter 12



Majestic. What exactly is it? Calling the #732 Etching Majestic is a very common mistake made by both Cambridge glass collectors and sellers.

Etching #732 is a beautiful design consisting of two major elements. It was introduced in the Fall of 1928 and makes its first appearance in the '27-29 catalog. It was used to decorate primarily the #3120 & #3130 stemware lines and Round Line blanks. Although found on crystal, it is more often seen on the early transparent colors of Amber, Light Emerald and Peach-Blo with some examples also on Willow Blue. It makes its final appearance in the 1930 catalog.

In the 1930 catalog, a page titled **3120 Stemware Crystal** “**Majestic**” appears. In addition to the #3120 Stemware Line, the #628 Candlesticks and #676 - 11 1/2” Bowl and #556 – 8” Plate are also shown. However, Cambridge gives no description of what Majestic is, starting collector confusion. Cambridge advertised this new decorative effect in the December 1930 issue of *China, Glass & Lamps* showing a #556 – 8” Salad Plate. It stated,



#104 6" Candy Box & Cover, Majestic

“The Majestic pattern combines rock crystal with a delightful etching and is to be had only in crystal.” During the 1920s, Cambridge dabbled a bit with the combination of an etching and gray cutting on the same blank, but this appears to be the first time they added a polished engraving to an etched piece.

On the stemware, notice that ovals are cut on the top of



#1006 Willow Blue 5 1/2" Footed Vase or Aquaria, Aero Optic, Etched 732, Element 1



#1006 Willow Blue 5 1/2" Footed Vase or Aquaria, Aero Optic, Etched 732, Element 2



#3120 10 oz. Ftd. Tumbler, Majestic



#3120 10 oz. Ftd. Tumber, Majestic - Top Rim



#3120 10 oz. Ftd. Tumbler, Majestic - Foot

the rim and on the foot. Additionally, the stem has also been cut. On non-stem pieces, the engraving will take on a different design of alternating ovals and two vertical notches on the rim. See the closeup of the base of the #638 Candlestick. Cambridge also beautifully engraved the top rim of the #638 candle cups. Other pieces may have different added effects.

When examining the 1930 Price List, the reader is directed to another page in the 1930 catalog for examples of additional blanks available Majestic. These are all shown RCE 538, but many of the edges are noticeably like the alternating ovals/notches. It's interesting to note the differences in the prices of items that are just Etched #732 and those same pieces Majestic. For example, the #3120 – 9 oz. Goblet is \$13.75 per dozen if it is just etched, but \$26.25 if Majestic. For non-stemware pieces the price really escalates. The #168 – 10" Hld. Sandwich Tray is \$27 per dozen etched, but \$75 per dozen Majestic. That's \$1436 per dozen or \$120 each in 2025! This is during the depths of the depression, so it's no wonder so little is seen today.



#638 6" 3-Lite Candelabrum, Majestic



#638 Candlestick Base



#638 Candle Cup

Over the years, Cambridge Glass experts have tried to

educate collectors. The first such effort was made by Phyllis Smith, who authored a very nice article in the February 1977 Crystal Ball presenting a very accurate description. In the 1997 Etchings by Cambridge book produced by Miami Valley Study Group, they correctly state that the #732 is “Also sold as Majestic with cuttings on the edges...” with Majestic printed in bold. I think people probably just automatically associated that term with the etching, without reading the entire text. I think I did at first. In the front of Mark Nye’s 2003 Rock Crystal Engravings book, referencing etched items that have also been cut, he has a nice description of Majestic. And finally, the 2006 NCC publication, Cambridge Glass Company Etchings, also has a correct description of Majestic.

Now my column is next in line.

Jaale



#813 -Sugar Sifter, Light Emerald, Etched 732, Silver Plated Top

CRYSTAL MAJESTIC

Majestic Design show on page 56. Shape of other item shown on page designated—left hand margin.

Page in Catalog		Per Doz.	Doz. Bbl.	Doz. Ctn.
60	104	Candy Box and Cover -----	75.00	3 --
60	135	Cheese and Cracker -----	75.00	5 --
60	168	Handled Sandwich Tray ----	75.00	2 --
60	173	Handled Sandwich Tray, Oval	75.00	1 --
60	441	Low Ftd. Bowl -----	75.00	1 1/2 --
60	533	3-pc Mayonnaise Set -----	75.00	3 1/2 --
56	628	Candlestick (Doz pair) ----	75.00	10 --
60	674	Bowl, flared -----	75.00	2 1/2 --
56	676	Bowl, R. E. -----	75.00	2 --
	993	Bowl, flared, 3-toed -----	75.00	2 --
	674/628	3-pc Centerpiece -----	150.00	1 --
	676/628	3-pc Centerpiece -----	150.00	1 --
	993/628	3-pc Centerpiece -----	150.00	1 --

**CRYSTAL MAJESTIC
3120 LINE STEMWARE**

Page in Catalog		Per Doz.	Doz. Bbl.	Doz. Ctn.
56	3120	9 oz. Goblet -----	26.25	6 4 --
56	3120	6 oz. Tall Sherbet -----	26.25	6 4 --
56	3120	6 oz. Low Sherbet -----	26.25	6 1/2 4 --
56	3120	3 oz. Cocktail -----	26.25	10 -- --
56	3120	4 1/2 oz. Oyster Cocktail..	26.25	18 4 --
56	3120	4 1/2 oz. Claret -----	26.25	9 -- --
56	3120	1 oz. Cordial -----	26.25	25 -- --
56	3120	6 oz. Fruit Salad -----	26.25	11 4 --
56	3120	12 oz. Footed Tumbler ..	26.75	7 4 --
56	3120	10 oz. Footed Tumbler ..	26.25	9 4 --
56	3120	8 oz. Footed Tumbler ..	26.25	10 4 --
56	3120	5 oz Footed Tumbler ---	26.25	20 -- --
56	3120	2 1/2 oz. Footed Tumbler..	26.25	30 4 --
56	3120	Fingerbowl -----	26.25	15 -- --
56	3120	Fingerbowl Plate -----	26.25	30 -- --
56	556	8 in. Plate -----	37.50	14 4 --

1930 Majestic Price List

Cuttings on Etched Blanks

There are at least two instances where Cambridge enhanced an etched design by sending the already etched blanks to the cutting shop for additional work. The simplest of the two is Majestic which consists of Etch 732 and cut ovals or ovals and lines (mitre cuts) around the rim of each piece. Both Etch 732 and Majestic are featured in the 1930 catalog on 3120 stemware while there is a more extensive listing for Etch 732. Undoubtedly, any blank etched 732 was also available with the additional cutting as Majestic.

Majestic

Mark Nye RCE Book

No: 732
Intro: Circa 1927
Disc: Before 1939
Catalog: 1927-1929, 1930-1934
Decorates: Gold encrusted, number unknown
Comments: Etch 732 was placed on three lines of stemware, 3065, 3120 & 3130 and both Round and Decagon line blanks. When combined with cuts on the edge or rim, Etch 732 was known as Majestic.

NCC Etching Book

Welcome to the eBay Report, featuring Cambridge glass items that sold on eBay over the past month. Selling prices are rounded to the nearest dollar. If no color is mentioned, assume that the piece or part of it being discussed is crystal. If I refer to an auction as "incognito," that means that the seller did not know he or she was offering Cambridge glass, and didn't use the word "Cambridge" in the description. I also mention if a listing was a Buy It Now offering, as opposed to an auction style listing. I think it's important to distinguish between the two, as the price for an auctioned item reflects competitive bidding (or no competition, if it sells for the opening bid.) Here we go:

Rose Point:

A rare #955 Cream pitcher, 2 5/8" tall, 2 7/8" wide sold for \$68.99 with 6 bids.



Three #498 tumblers, 12 ounces, 5 1/4" tall, sold for \$79.99.

A rare 2 ounce sherry, 5 1/4" tall, #7966, sold for \$112.99.

A set of four pressed 12 ounce footed tumblers with etched bowls sold for \$1000.00.



Statuesque Line 3011:

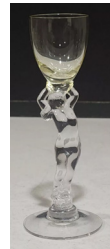
A set of 6 Cocktails, Crystal bowl with Ebony stem, 6 1/2" tall, 3 ounce, sold for \$195.00 with one bid. These were listed as cordials.



An exquisite Royal Blue Cigarette Box and cover, 8 1/2" tall, sold for \$1,125.00 with 3 bids.



A beautiful Royal Blue Ash Tray, 7" tall, sold for \$299.00.



A #13 Brandy, 1 ounce, crystal stem with a Gold Krystal bowl, sold for \$147.64.

Elegant Etches:

A pair of hard to find #646 Decagon single keyhole candlesticks; Heatherbloom etched Portia sold for \$269.99 with 3 bids.



Interestingly, a second pair of #646 Decagon single keyhole candlesticks; Heatherbloom etched Portia sold for \$290.00.

A #3400/38 ball pitcher and six #3400/38 tumblers in Peach-Blo and etched #973 Lorna sold for \$399.00.



A rare #42 Amethyst 8" Seashell Line 8" Flower Center vase, in immaculate condition, sold for \$220.00.



A pair of 3 light candle holders #1307 etched #755 Rose Marie sold for \$110.00.

Other Great Glass:

A #402 Moonlight vase, 12 1/4" tall, etched #523 Chrysanthemum sold for \$135.00.



A Bar Bottle Tantalus Set with #1381 28 oz bottles in Carmen (labeled Rye), Crystal (labeled Bourbon), and Crystal (labeled Scotch), with some wear to the silver noted, sold for \$325.00. (Definition: A Tantalus Set, often referred to as a Tantalus Bar Bottle Set, is a type of liquor set that features multiple glass bottles or decanters for storing various spirits.)



Great Cambridge Colors:

A gorgeous Mt. Vernon footed covered urn, #9, 8" tall in Carmen sold for \$114.99.



A set of 7 #496 Little Joe shot glasses each with the original label, 3 1/2" tall and 1 1/4" across, 1 1/2 ounce capacity, in Gold Krystol, Mocha, LaRosa, Moonlight, Tahoe Blue, Amethyst, and Forest Green sold for \$65.00. They were noted in good, vintage condition with no chips.

A rare handled Frog Vase #1352 in Green, 8 3/4" tall, without detail, sold for \$550.00.



That's it for now. I enjoy browsing eBay, but I might miss something interesting. If so, let me know. Until next time, happy Cambridge hunting! ■



Membership Corner

Member Spotlight: *Dave and Kathy Lake*

Greetings from Fort Myers, Florida. Dave was born in Cambridge, Ohio and was raised in Center, Ohio. He graduated from Old Washington High School in 1968. Following graduation, Dave moved with his parents, sister, and brother to Fort Myers, Florida where he has resided since. Kathy was born in Zanesville, Ohio and was raised in Quaker City, Ohio. Kathy also graduated from Old Washington High School in 1968. Kathy and Dave were married in 1972 and have since resided in Fort Myers.

We started collecting pieces of depression glass. Then we fell in love with Crown Tuscan made by the Cambridge Glass Company. We then started collecting Crown Tuscan by attending glass and antique shows. In 1979, we were attending a glass show in Clearwater, Florida, where we met Bill and Phyllis Smith, who were at the show promoting the National Cambridge Collectors Club. We decided to join the club. Since then, our collection has grown.



We have many pieces of Decorated Crown Tuscan. A large collection of Swans with over 125 pieces. We also have a large collection of Individual Creamers and Sugars, and many other Cambridge items in our collection. We love attending the Cambridge Glass shows when our schedule permits. Kathy still has family in Ohio and Pennsylvania. So when we are in Ohio visiting family, we always make time to stop by and visit our Museum.

If you are ever in the Fort Myers, Florida area please reach out to us at davidlake1288@gmail.com and arrange to stop by and visit.



WANTED *Glass Dash Participants*

We are on the lookout for several interested glass dealers for the 2025 Glass Dash which will be held Saturday June 28, at the St. Benedict's Gym, the same location as the past several years. The dash is where everyone gets the same chance to add that rare item to the collection.

We are looking for anyone that is wanting to reduce their collection or just has too much. This is a great venue to reduce your collection and add that rare item. If interested in joining the fun, please contact Frank Wollenhaupt by email at

fewvic303@sbcglobal.net
or just give him a call at 937-475-2889.

We've Moved.



The 20-30-40 Glass Society of Illinois
52nd Annual

Glass Show & Sale

Saturday, March 8th, 2025 - 10am to 5pm
Sunday, March 9th, 2025 - 11am to 4pm
Admission: \$11.00 per Person / \$10.00 with this card
Special pre-sale Saturday only 9am to 10am \$15.00 per person

Featuring: Depression,
Elegant, Carnival, Pattern, Art,
& Mid-Century Modern Glass,
Pottery & Utensils, &
Mary Lou's Crystal Repair



Save the Date.

New Location:
Holiday Inn Chicago SW-Countryside Conference Center
6201 Joliet Rd. Countryside IL. 60525
For information, call 708-655-1702
or visit us on Facebook at: 20-30-40 Glass Society of Illinois Annual Show and Sale.

reciprocal ad

New Members

Dave Fenley	TX
Melissa Fenley	TX

*Help spread the benefits of being a
"Friend of Cambridge"*

Cambridge Glass Private Collection for Sale

A variety of items, including Rose Point 3121 stemware and many accessory pieces from the 3400, 3500 & 3900 lines. Nice Near Cut lamps as well as candlesticks, swans, and much more.

Items are located in Charleston SC.

Contact Kim Carpenter by email to request a listing. Prices negotiable
bobandkim840@gmail.com



In Memoriam

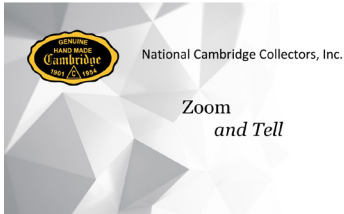
NCC is saddened to learn of the passing of member #3167 Carl Beynon of Cambridge, Ohio. Carl was given Lifetime member status in 2007 in recognition for all his contributions to NCC. We send our thoughts and prayers to the family.

NCC Events

**Spring Membership Meeting
Friday, March 14, 2025**

**2025 NCC Benefit Auction
March 15, 2025**

**2025 NCC Convention
June 26-28, 2025**



Contact membership@cambridgeglass.org if you don't get the monthly email with the Zoom information.

March 11	2-Light Candlesticks
April 8	Puff Boxes and Vanity Boxes / Compacts
May 13	Everglade
June 10	3-Light Candlesticks

Member Benefit

Each NCC household is allowed one free 20-word classified ad in the Crystal Ball per calendar year as part of their membership. This can be a "For Sale" or "Wanted" type of classified ad. Submit your ad by email to editor@cambridgeglass.org

CLASSIFIEDS

Nothing this month. What are you looking for?

March 8-9, 2025

20-30-40 Glass Society of Illinois

52nd Annual Glass Show & Sale

Holiday Inn Chicago SW-Countryside Conference Center

6201 Joliet Rd.

Countryside, IL 60525

<http://20-30-40glassociety.org/>

April 26-27, 2025

Western Reserve American Glass Club

2025 Retro American Glass Show and Sale

Parma Lutheran Church

5280 Broadview Road

Parma, OH 44134

wragclub@gmail.com

April 26-27, 2025

Great Lakes Depression Glass Show & Sale

Madison Place

876 Horace Brown Dr

Madison Heights, Mi 48071

<http://www.deprAessionglassclub.com>

gldgtroy@gmail.com

May 9-10, 2025

Eastern National Antique Spring Show and Sale

Carlisle Expo Center

100 K St.

Carlisle, PA

<https://easternnationalantiques.com/>

May 10, 2025

Hudson Valley Depression Glass Club

2025 Spring Show and Sale

Veterans Memorial Building

413 Main St.

Beacon, NY 12508

<https://www.facebook.com/hvdepressionglassclub/>

June 7-8, 2025

Tiffin Glass Collectors Club

37th Artistry in American Glass Show and Sale

Tiffin Middle School

103 Shepherd Dr.

Tiffin, OH 44883

<https://www.tiffinglass.org/>

June 13-15, 2025

Fostoria Glass Society of American Glass Show & Sale

Moundsville Center Building

901 Eighth St.

Moundsville, WV 20641

<https://www.fostoriaglass.org/>

Glass Shows

DEALER DIRECTORY

Advertising Rates

Dealer Directory - \$24 for 10 issues (one year)

Other sizes are per issue:

1/8 page \$15 1/4 page \$20

1/2 page \$30 Full page \$50

Deadline is 10th of preceding month. Ads must be paid in advance. Show listings free. Electronic submissions should be emailed to:

editor@cambridgeglass.org

Veronica Montelongo
Hartville **ANTIQUE MALL**
www.hartvilleantiquemall.com

Cambridge-Heisey-Fostoria-Tiffin-Duncan Miller-& More

Hartville Antique Mall **330.587.2001**
238 Kent Ave NE hartvilleantiquemall@gmail.com
Hartville, OH 44632

Max Miller
Elegant American Glassware
www.maxmillerantiques.com

The Market Place
10910 Katy Freeway. 713-410-4780
Houston TX 77043 mmxglass@aol.com

ISAACS ANTIQUES
(740) 826-4015

↔ *located in* ↔

Black Cat Vintage LLC.
637 Wheeling Ave.
Cambridge, OH 43725
(740) 995-8370

Glen & Carolyn Robinson
White Rose Antiques
Specializing in Depression Era Glassware

2454 McFarland Road
York, SC 29745

803-684-5685
gandcrobinson@aol.com
whiteroseglassware.com

MARGARET LANE ANTIQUES

2 E. Main St. New Concord, OH 43762
Lynn Welker (740) 705-1099

Cambridge Glass Matching Service
Hours: Mon-Fri 10-12 AM, 1-5 PM
or by appointment

CRYSTALLINE COLORS
Cambridge • Fostoria • Elegant Glass
Booth and Showcases in the
Medina Antique Mall
Medina, OH (I-71, exit 218)

Lynne R. Franks 216-661-7382

Connecting Buyers & Sellers!

Tell us what you are looking for and we help find it.

CAMBRIDGE GLASS.US

P. Snyder 740-601-6018

E-Mail and Find Your Glass!

psnyder@cambridgeglass.us
www.cambridgeglass.us

E-Blast

When you are searching for Cambridge glass, email your request and it is emailed to all members and dealers.
P. Snyder, 1500 Edgewood Dr., Circleville, Ohio 43113

Marcie Hagerty Bergquist
The Crystal Lady
Specializing in
Elegant Glass & Collectibles
Omaha, NE 68137
402-699-0422
mebergq@me.com

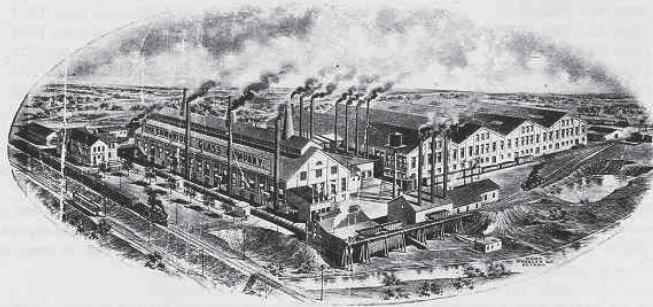
*Be sure to tell
dealers that you
saw their ad here.*



National Cambridge Collectors, Inc.
PO Box 416
Cambridge OH 43725
email: editor@cambridgeglass.org
website: www.cambridgeglass.org



The Home of Cambridge Glass



THE CAMBRIDGE GLASS COMPANY

Capital \$1,500,000.00

Incorporated 1901

CAMBRIDGE, OHIO, U. S. A.

The National Museum of Cambridge Glass National Cambridge Collectors, Inc.

***Open April thru October
only***

