



Cambridge Crystal Ball

Published by the National Cambridge Collectors, Inc. as a resource which informs, invites and inspires people to encourage the continued preservation of the glass produced by the Cambridge Glass Company of Cambridge, Ohio for future generations.

Issue No. 584

ISSN 2474-5987

January 2025

Copyright © 2025 National Cambridge Collectors Inc., All Rights Reserved

Reprint: China, Glass and Lamps: January 12, 1925

Living up to its reputation of introducing each January most interesting developments in table and decorative glassware, the Cambridge Glass Co., of Cambridge, Ohio, has on display in Room 728 at the Fort Pitt hotel unusual lines in block optic and a new color glass called "Rubina." The block optic in the "Rubina" and new transparent colors, plain and decorated, are among the outstanding offerings in glassware.

In "Rubina" glass, which can be had both plain and in block optic, new shapes in comports, bowls, vases, candlesticks and other pieces have been developed. Especially attractive is the refreshment set in block optic "Rubina." The new glass is not one color but a natural three or more tone glass in which the predominating shares are red, green and blue, each tone diverging into the other. Another new glass is the "Onyx" which is a light tan shade with or without decorations.

In gold encrustation treatment, the Cambridge decorating shops produced several new assortments in wide encrustations which are worthy of attention from buyers. One encrustation is solid and is broken at intervals with a solid rosette. These encrustations are offered on assortments of solid and transparent colors, the latter including amber, mulberry and cobalt blue.

Block optic design is used in transparent colors very effectively. Outstanding is a transparent amber in block optic which has a frosted etching, a very inviting container and server for summer refreshments. Refreshment sets in green tone also are attractive.

In specialties there is an assortment of oval shapes, oval

cheese and cracker, oval sandwich tray, oval sugar and cream and oval candy box. Other things are boudoir sets and two piece party sets, both oval and round in solid and transparent colors, and gold encrustations; an owl lamp; new glass lamp bases in assorted colors and shapes; transparent glass aquariums with ebony feet; console sets in wide variety and wine sets in transparent colors. A striking novelty is a wine set which consists of a black tray bearing a keg-shaped container with nickel plated spigot on a rustic stand and which is completed by six rustic glasses.

In stemware and tumblers there is a wide choice in transparent colors, plate etching and gold encrustations and other treatments. There is also a wide assortment of cologne bottles in varying colors and sizes and a very complete display of decorated and plain salad plates which have been a very popular number with this factory.

CGL 1925-01-12, p 15

What's Inside

Reprint: China, Glass and Lamps Jan 1925	1
President's Message	3
Happy New Year!	4
2025 Benefit Auction	7
2025 NCC Benefit Auction Listing.....	8
eBay Report	17
Membership Corner	19
Recent Finds.....	20
NCC Events	21
New Members.....	21
"Friends Of Cambridge" Membership	22

National Cambridge Collectors, Inc.

PO Box 416 Cambridge, OH 43725-0416

Board of Directors

	2025	
Ken Filippini	Freeman Moore	Christine Smith
	2026	
Julie Buffenbarger	Doug Ingraham	Frank Wollenhaupt
	2027	
Marti DeGraaf	Lindy Thaxton	Lynn Welker
	2028	
Cindy Arent	Les Hansen	Mike Strebler

Officers

President	Doug Ingraham
Vice-President	Julie Buffenbarger
Secretary	Christine Smith
Treasurer	Mike Strebler
Sergeant-at-Arms	Les Hansen

Committees

Endowment	Membership
Finance	Technical Decision
Property	Digital Strategy
Strategic Planning	Digital Preservation
Governance	Development

Member Services

Vice President

Member Relations
Convention
Member Social Media
Glass Dash
Glass Show
Study Groups
Webmaster

Freeman Moore
Freeman Moore, Membership Database
Julie Buffenbarger & Christine Smith
David Ray
Larry Everett & Frank Wollenhaupt
David Ray, Mike Strebler, Jack Thompson
(open)
David Adams

Development

Vice President

Campaigns

Events

Projects
Publicity

Mike Strebler
Ken & Jane Filippini, Annual Fund Directors
Larry Everett, Director of the Heritage Society
Lindy Thaxton,
Lynn Welker, Auction Managers
Susan Everett & Frank Wollenhaupt, Jewelry
Convention: Jonathan Fuhrman

Education

Vice President

Crystal Ball

Les Hansen
Freeman Moore, Editor

Museum

Vice President

Public Operations
Facilities & Grounds

Inventory Management
Collections
Museum Gift Shop

Archivist
Museum Social Media
Community Relations

Cindy Arent
Lindy Thaxton, Director of Public Operations
Cindy Arent,
Joe Miller,
Lindy Thaxton
Lindy Thaxton, Director of Inventory Management
Lynn Welker, Director of Collections
Cindy Arent, Gift Shop Manager
Lynn Welker, Gift Shop Manager
Lindy Thaxton
Cindy Arent, Director
Cindy Arent

Administration

Vice President

Accounting & Finance

Julie Buffenbarger
Lisa Neilson, Office Manager

MEMBERSHIP QUESTIONS?

Please send address changes to:
Membership - NCC
PO Box 416
Cambridge, OH 43725-0416
or by e-mail to:
membership@cambridgeglass.org



CONTACT US

NCC Business Manager
Phone: 740 432-4245

businessmanager@cambridgeglass.org



Doug Ingraham, President

e-mail: president@cambridgeglass.org

Christine Smith, Secretary

e-mail: secretary@cambridgeglass.org

Heritage Society

Ensuring the preservation mission of the NCC through planned giving and estate bequests.

Members of The Heritage Society are those who have included the NCC in their wills or estate plans, thus providing the organization with a secure future.

The mission of The Heritage Society is to foster smart estate planning and to assure that NCC is not forgotten as an important beneficiary. Any pledge is meaningful and appreciated.

All Cambridge collectors - both current and future - will benefit from, and be grateful for your support.

Let us know how we can help with your future plans.

Museum:

National Museum of Cambridge Glass



Like us on Facebook

Member: Cambridge Glass/National Cambridge Collectors

NCC Website: www.CambridgeGlass.org

NCC Museum Website: www.cambridgeglassmuseum.org

Cambridge Glass Library Website: www.cambridgeglassdatabase.org



PRESIDENT'S MESSAGE

Study Groups Revisited

Happy New Year! 2025 is shaping up to be a tremendous year for NCC.

One of the first topics we can celebrate is the re-emergence of the study group. NCC has recognized twenty study groups since the first one in 1974. For years, as the demographics of the organization changed, and people physically relocated, our study groups withered. But, like a phoenix they are rising again, just different.

Let's start with some basics. What is a study group meeting? I would argue it has a couple of key elements:

- A group of people who are passionate about glass
- An educational topic
- A chance to show off glass
- Most importantly, an opportunity to talk/laugh/console/tease your fellow glass-inspired friends. A chance to build community.

During the Pandemic, NCC started Zoom and Tell meetings to keep members connected as we huddled up in our homes. From the beginning, maybe by chance, maybe not, the Zoom and Tell meetings have all the elements of a study group. Each month Cambridge Glass lovers get together, have a short educational program, show off glass, talk, laugh, and support each other. Does this group have to be called a study group? Nope. If friends get together, have fun, and share their love of Cambridge Glass, who cares? The study group reemerges, just different.

The Miami Valley Study Group also started doing their study group meetings online with Zoom. They started advertising this meeting beyond their traditional members. Gradually, month by month, more people join them on a Sunday afternoon to educate themselves on Cambridge Glass and share their stories and lives with one another. Recently about 12 of them got together for a Holiday dinner! An annual tradition, but with an invited guest list from around the county. Going forward this will be the Sunday Study Group in recognition of the metamorphosis that is occurring. The study group reemerges, just different.

The North Texas Study Group remains active, but also with fewer members and meetings. The loss of the two Dallas area glass shows and the Pandemic made it hard to have meetings, but if you attend the February or August Houston glass shows, you'll find members of the North Texas Study Group in attendance.

In the future, I can see additional online groups forming, maybe around particular collecting areas, maybe one on historical preservation, or others. We are only limited by our creativity. But, organically, I can see more groups sprouting up. In the June 2022 Crystal Ball, Barbara Ritchin put out a call to solicit interest in a New York study group, either in person or virtual.

All of this underscores the biggest theme for the organization going forward. That is, we must reimagine how we do things. Keep what works well but think about how we change for the future. We need to use technology more to automate and improve. We need to focus on fellowship as well as preservation, education and promotion. I am hoping that 2025 will be a foundational year for us in a digital transformation. Our 2025 digital goals are: launch our new website, launch the Cambridge Glass Virtual Museum (more on that in later issues), launch our first interactive Facebook Page, launch our Instagram account, start social media advertising and outreach. Let's reach every Cambridge Glass enthusiast out there and have them be an active part of our community.

You can join the Zoom and Tell meeting (second Tuesday of every month) or the Sunday Study Group meeting (third Sunday of the month) or both! Just send a message to membership@cambridgeglass.org and we will send you the Zoom details for joining the meetings. Come join us, you might make another friend or two or three or...30.

*Cheers,
Doug*

president@CambridgeGlass.org

Happy New Year!

By Cindy Arent

It's hard to believe it has been nineteen years since we decided to be open limited hours during the holidays to coincide with Dickens Victorian Village in downtown Cambridge. The first year we had to dress in our Victorian costumes and walk downtown handing out museum brochures to attract visitors. Each year we have had more visitors. The 2024 Museum holiday season was very successful. We met so many new friends and reconnected with visitors that return each year. For many people, it has become an annual tradition. The theme for the museum holiday season was "*Christmas at the Glass House*".

New this year was a *Tribute Tree* to honor and remember employees of The Cambridge Glass Company during the holidays. This year we had 75 photo ornaments on the tree and are hoping for more next year. We talked to several visitors who had family members who worked at The Cambridge Glass Company. They all said they would look for a photo and send it to us. A wonderful way to remember the wonderful Cambridge Glass artisans during the holidays!

November 14th was the Dickens Victorian Village Chocolate Walk in downtown, Cambridge. 350 ticket holders visited the Museum that evening to receive their chocolate. This year, Mosser Glass, represented by Mindy Mosser Hartley, joined us at the Museum. Our South 9th Street neighborhood was well represented. In addition to the Museum and Mosser Glass, the Cambridge Fire Department, Century 21 Real Estate and Nothing But Chocolate also handed out chocolate. We lined the street with solar torches to guide participants our way. A wonderful evening!

One of our favorite groups that visited during the holidays, was a group of 25 international students from the University of Charleston, West Virginia. They were so interested, engaged and asked very good questions. They were from: Sweden, India, Belgium, Pakistan, Netherlands, Honduras, United Kingdom, Iceland, New Zealand, Russia, Columbia, Australia and Malaysia.

The Cambridge Ornament sales have been going very well. They have been purchased at the Museum and many have been shipped all over the country. Lindy Thaxton and I fund this project, so the sales are all profit. As I write this in early December, we are approaching \$4,000 in sales for 2024 and have received many positive comments from visitors. Thank you for your donations of slightly damaged Cambridge stemware!

The Annual Holiday Open House was held November 29th and 30th with free admission both days. There were cars in the parking lot waiting for us to open! Many thanks to our volunteers, docents and members who go above and beyond to enable the success of our Museum.

Best wishes for a Happy & Healthy 2025! ■



Christmas at the Glass House was the theme at the Museum during the holiday hours.



Gathered around our glassworker are (L-R) Mindy Mosser Hartley, Sharon Bachna and Sandi Rohrbough. Visitors loved to take selfies with him!

The *Tribute Tree* to honor employees of The Cambridge Glass Company during the holidays was new this season. We hope it is even more successful next year. If you have a family member who worked at the plant, please send their photo to be included.



This group of international students from the University of Charleston WV really enjoyed the Museum!



"Cambridge Arms – 101 Ways to Give Your Table a New Look" These university students wanted to try to figure it out!



These volunteers passed out chocolate and greeted 350 visitors during the Dickens Victorian Village Chocolate Walk: Lindy Thaxton, Sharon Bachna, Sandi Rohrbough and Cindy Arent.



This crew was ready to greet a motorcoach of 52 people from News Jersey. They are Jeff Ross, Anna Marie Pavlov, Diana McMahon, Cindy Arent, Lindy Thaxton, Sharon Miller and Sandi Rohrbough. We had many compliments from the group about how well organized the tour was and how much they had learned about Cambridge Glass. When we got on their bus to bid them farewell and thank them for coming, some said that we were their best stop in three days!

A Holiday Open House tradition! For many years, NCC members Nathan and Jill Koman and family have attended the Open House. And, each year they dress as glassworkers and take a family photo in the auditorium. Their children have grown taller every year!



National Cambridge Collectors, Inc.

2025 Benefit Auction

Saturday, March 15, 2025

Pritchard Laughlin Civic Center

7033 John Glenn Hwy • Cambridge, Ohio

INFORMATION

Preview at 8:30 a.m. Auction starts at 9:30 a.m.

Craig Connelly, Auctioneer Admission: \$2.00

All glass in the auction is guaranteed to be Cambridge. The Auction Managers have checked all glass carefully for verification and damage. Any piece purchased should be examined immediately by the purchaser, and returned within five items if not as represented. All damages are indicated in this catalog; last minute changes or addenda will be announced by the Auction Managers immediately prior to the auction. If no color is indicated herein, the item is crystal. There are no reserves and no buyer's premiums are charged. Photographs of auction attendees and activities may be taken for NCC promotional purposes.

TERMS: Payment is expected in cash the day of the sale; checks will be accepted with proper identification.

CATALOG: Lots will be sold in the order printed herein. A number in parenthesis () at the end of a listing indicates the number of that item available for sale. The auctioneer will announce whether such multiples are being sold individually or as a lot. If multiple items are being sold individually, a winning bidder may take any number available. If the catalog indicates "set," "pair" or a similar term, the lot is sold as such.

ABSENTEE BIDS: Anyone wishing to bid absentee, may do so by mailing their bids to the Auction Committee at the address below. All bids must be received by the end of Thursday prior to the auction to be eligible, so please allow enough time for the postal service to do its thing. **They must contain all the following information:**

- List showing the lots desired and the maximum bid for each lot.
- Valid Credit Card, VISA & MasterCard accepted. The following is required for a proper credit card transaction:
 1. Exact name as it appears on the card
 2. Expiration date
 3. 3-Digit Security Code on the back
 4. Exact address credit card statement is billed to
 5. Phone number
- Address where winning lot(s) are to be shipped to.

Bids will be executed secretly and a winning bidder will pay only the final auction price. If there are multiple absentee bids for the same lot, bidding will commence on the floor at the second highest bid, effectively shutting out all by the highest absentee bidder.

Shipping: Items can be shipped to street addresses only. WE CANNOT SHIP TO P.O. BOXES. If you are the successful bidder, your credit card will be charged as follows: **Final auction price + 5% transaction fee + cost of shipping.**

MAILING ADDRESS: All absentee bids must be mailed to:

NCC Auction Managers

P.O. Box 416

Cambridge, OH 43725

**BIDS MUST BE RECEIVED BY
THURSDAY, MARCH 13, 2025 TO BE ELIGIBLE**

QUARTERLY MEETING: The Quarterly Meeting of the NCC will be held on Friday, March 14 at 7:30 p.m. A preview of the auction glass will be presented. Show & Tell glass is also welcome at the meeting. All are welcome!

For additional copies of the catalog listing as well as detailed information on the entire auction, please visit the website at <https://www.cambridgeglass.org> under **Annual Auction.**

Additional copies of this catalog are included with admission to the auction.

2025 NCC Benefit Auction Listing

Lot	Cost	Description
1	_____	119 Amethyst Basket, 7" W x 12" tall, Signed
2	_____	119 Light Emerald Basket, 7" W x 12" tall, Light Emerald handle, Signed
3	_____	118 Amber Basket, 8" W x 13" tall
4	_____	118 Crystal Basket, 8" W x 13" tall, Unknown Engraving
5	_____	119 Royal Blue Basket, 7" W x 12" tall
6	_____	119 Ebony Basket, 7" W x 12" tall, marked
7	_____	156/69 Crystal Martha Oyster Plate/Saucer Cup (4 sets)(Chip on 1 Cup) (LOT)
8	_____	1491 Crystal 5 1/2" Twin Salad Dressing Bowl, RCE Achilles 698
9	_____	3500/47 Crystal 2 Handled Candy Dish or Comport, Etch Elaine
10	_____	3400/638 Willow Blue 6" 3-Lite Candleholder, Etch Cleo
11	_____	M495 Crystal Martha, 5 1/2" 2-Lite Candlesticks, Etch Chantilly, Pair
12	_____	3123 Light Emerald 6 oz. Fruit Salad, (1) Aero Optic, Etch Rosalie, (2), UNUSUAL (LOT)
13	_____	3085 Amber 2 1/2 oz. Wine, Gold Encrusted, Etch Imperial Hunt
14	_____	3075 Peach-blo 3 oz. Ftd Tumbler, Gold Encrusted, Etch Imperial Hunt
15	_____	3400/175 Crystal Cocktail Shaker, No. 19 Top, Etch Diane
16	_____	1238 Amethyst 12" Footed Vase, Keyhole
17	_____	3130 Amber 2 1/2" Footed Tumbler, Etch Gloria , 1 Label, (3) (LOT)
18	_____	3400/40 Crystal 6" Sugar Shaker, Etch Gloria, Crystal Lid
19	_____	3130 Gold Krystol 12 oz. Footed Tumblers, Etch Gloria (6) (LOT)
20	_____	30 Willow Blue 16" Everglades Plate
21	_____	30 Crystal 16" Everglades Plate
22	_____	3400/67 Crystal 12" 5 Part Celery and Relish, Etch Apple Blossom
23	_____	168 Crystal 10" Center Handled Server, Etch Wedgwood
24	_____	811 Peach-blo Decagon 9 1/2" Dinner Plates, (Light Scratches), Signed (8) (LOT)
25	_____	597 Peach-blo Decagon 8" Plates Signed, (7) (LOT)
26	_____	1087 Peach-blo Decagon 9 1/2" Vegetable Bowl
27	_____	1402/34 Crystal Tally-Ho 11 1/2" Cheese Plate with Seat, Etch Elaine
28	_____	904 Peach-blo Roundwear 16" Platter
29	_____	904 Amber Roundwear 16" Platter
30	_____	661 Crystal 11" x 6.75" Dresser Tray, Etch Gloria, Signed, UNUSUAL
31	_____	1093 Ebony 2 Compartment Relish, White Gold Encrusted, Etch Gloria
32	_____	1239 Peach-blo 14" Vase, Keyhole, Etch Gloria
33	_____	1239 Crystal 14" Vase, Keyhole, Etch Gloria
34	_____	3400/56 Willow Blue 5 1/2" Cereal or Fruit Saucers, Etch Gloria, Signed (4) (LOT)
35	_____	3400/66 Peach-blo 9 1/2" Club Luncheon Plate , Etch Gloria
36	_____	3400/9 Light Emerald 7 1/2" Covered Candy Tab Handled., Gold Encrusted. Etch Gloria, Signed
37	_____	1205 Gold Krystol 64 oz Jug, Etch Gloria
38	_____	4071 Peach-blo Wetherford 12" Celery
39	_____	3400/45 Crown Tuscan 11" 4 Footed Bowl, Crimped
40	_____	626 Crown Tuscan 3 1/2" Candlesticks, Pair
41	_____	104 Royal Blue Mount Vernon 12" 5-compartment Celery and Relish
42	_____	1307 Amber 6 1/4" 3-Lite Candlestick, Tall Stem Version, (1)

- 43 _____ 1 Light Emerald, Ebony Keg Set, Includes #1 Keg with Spigot and Ebony Stopper, #1 Ebony Stand, #201 Barrel shape tumblers (6) and #213 10" tray (LOT)
- 44 _____ 3400/87 Forest Green 11" 2-handled Celery, Signed
- 45 _____ 3400/68 Gold Krystol Cream and Sugar, Etch Apple Blossom, Signed, Pair
- 46 _____ 3011/63 Crown Tuscan Statuesque, 9" Candlesticks, Pair
- 47 _____ 110 Crystal Mount Vernon 5" 2-Lite Candlestick, (1)
- 48 _____ 388 & 390 Crown Tuscan 4" Ash Tray and 6" Ash Tray (LOT)
- 49 _____ 4000/41 Emerald Cascade - Cream and Sugar, Pair
- 50 _____ SS1 Crown Tuscan 5" Bread and Butter Plate, Charleton Roses and Bows Decoration (Slight Trim Wear)
- 51 _____ 1041 Ebony 4 1/2" Swan, Type 1, Signed
- 52 _____ 1042 Ebony 6 1/2" Swan, Type 1, Signed
- 53 _____ 1043 Ebony 8 1/2" Swan, Type 1, Signed (Small Fin Chip)
- 54 _____ 1044 Ebony 10" Swan, Type 1, Signed
- 55 _____ 1045 Ebony 13 " Swan, Type 1, Signed (Fin Chip)
- 56 _____ 1402/139 Forest Green 1402/139 10" Top Hat Vase
- 57 _____ 920 Amber 7 1/4" Butter & Cover with Drainer
- 58 _____ 1040 Milkglass 3" Swan - Type 3
- 59 _____ 1040 Amber 3" Swan - Type 2, Signed
- 60 _____ 1040 Royal Blue 3" Swan - Type 2, Signed
- 61 _____ 1040 Carmen 3" Swan - Type 3
- 62 _____ 1040 Carmen 3" Swan - Type 2, Signed
- 63 _____ 701 Peach-blo Wreath Place Card
- 64 _____ 701 Crystal Wreath Place Card
- 65 _____ 1431 Royal Blue Bulb Vase
- 66 _____ 1431 Amber Bulb Vase
- 67 _____ 1128 Crystal Scotty Dog Bookend (hollow mold), Pair
- 68 _____ 165 Moonlight Caprice Covered Candy (mold version 2), Alpine
- 69 _____ 232 Moonlight Caprice 5" Ivy or Rose Bowl
- 70 _____ 3500/41 Crystal 10" Covered Urn, Gold Encrusted, Etch Elaine
- 71 _____ W120(1123) Milkglass Dresden Lady
- 72 _____ 1123 Crystal Dresden Lady
- 73 _____ 512 Peach-blo 9 1/2" Rose Lady Flower Figure Frog, Tall Base, (Chip under base)
- 74 _____ 512 Peach-blo 8 1/2" Rose Lady Flower Figure Frog
- 75 _____ 513 Crystal 13" Draped Lady Flower Figure Frog, (Chip under base)
- 76 _____ 518 Peach-blo 8 1/2" Draped Lady Flower Figure Frog
- 77 _____ 1114 Crystal 6" Bashful Charlotte Flower Figure Frog
- 78 _____ 1123 Crystal Dresden Lady, Partial Satin Finish
- 79 _____ 1380 Crystal 26 oz. Scotch Decanter in Chrome Holder, Pump Top, Cambridge Label (Lock Broken)
- 80 _____ 1541 Crystal 28 oz Scotch and Rye Decanters in Chrome and Wooden Frame (Sat on Mr. Orme's Desk at the Plant)
- 81 _____ 3797/85 Crystal Cambridge Square, 32 oz. Decanter, Slight Cloudiness
- 82 _____ 52 Amber Mt. Vernon, 40 oz. Decanter and (2) 22 Mt. Vernon 3 oz. Footed Tumblers (Set)
- 83 _____ 1070 Amber 36 oz. Pinch Decanter
- 84 _____ 110 Milkglass Mt Vernon, 2-Lite Candlestick (1)

- 85 _____ 3011/3 Carmen Statuesque, Saucer Champagne (2) (CHOICE)
- 86 _____ SS46 Crown Tuscan Seashell 7 1/2" Snail Flower Holder
- 87 _____ SS14 Crown Tuscan Seashell 8 1/2" Comport, Charleton Gardenia
- 88 _____ 3400/38 Royal Blue 80 oz. Ball Jug
- 89 _____ 111 Milkglass Seashell 5" Bonbon
- 90 _____ W81 Milkglass Mt. Vernon 2 Handled Salt, W74 5 oz. Juice and W102 2 1/2" Seashell Ashtray (LOT)
- 91 _____ Original Metal Worker's Tool, Stamped "Doc Mosser"
- 92 _____ 1554 Crystal 12" 2-Lite Cornacopia Center Piece
- 93 _____ SS30 Crown Tuscan 9" Seashell 3 Part Relish, Charleton Roses, (Gold Trim Wear)
- 94 _____ 319/B/2 Amethyst/ Crystal Handle Georgian Basket
- 95 _____ 319/B/2 Smoke Georgian Basket & Handle (2) (CHOICE)
- 96 _____ 319/B/2 Late Emerald Georgian Basket & Handle
- 97 _____ 319C Mandarin Gold Georgian Candy Jar with Lid
- 98 _____ 180 Carrara Top Hat, (3 Brim Variances) (CHOICE)
- 99 _____ 80 Primrose 6" Paste Mold Vase
- 100 _____ 36 Jade 7" Bowl
- 101 _____ 14 Primrose 10" Bowl on Ebony Base, D619 Gold Band Decoration
- 102 _____ 384/499 Emerald 11" Oval Bowl and Calla Lily Candlesticks Pair, (slight scratches on bowl) (Set)
- 103 _____ 432/65 Ivory 9" Ram's Head Bowl, 9 1/2" Doric Candlesticks (Set)
- 104 _____ 645 Crystal 3-Lite Epergne with 2 vases
- 105 _____ 671 Crystal Cambridge Arms Epergne/ bobèche/3 in prisms/ 2 vases
- 106 _____ 993 Crystal 12" 4 Footed Bowl, Etch Lily of Valley
- 107 _____ 1917/150 (2489?) Crystal Satin Decalware Fingerbowl
- 108 _____ 231 Crystal Satin Decalware 3 pc , Oblong Mayo with Underplate/ladle(transfer design) (pinhead nick inside rim)
- 109 _____ 1917/88 Crystal Satin Decalware 1# Candy Jar (Optic)
- 110 _____ 437 Crystal Satin Decalware 9 1/2" Candlesticks, Pair
- 111 _____ 8701 Peach-blo 8 oz. Flat Tumbler, Optic, Etch Imperial Hunt , (3) (CHOICE)
- 112 _____ 881 Light Emerald 8 oz. Flat Tumbler, Etch Golf Scene (2) (CHOICE)
- 113 _____ 2800/71 Primrose 7 1/2"Candlesticks, Pair
- 114 _____ 1917/96 Jade 1/2 # Candy with Lid
- 115 _____ SS16 Windsor Seashell Compote, Dark Color, Signed
- 116 _____ 1236 Crown Tuscan 7 1/2" Ivy Ball, Keyhole
- 117 _____ 1236 Ebony 7 1/2" Ivy Ball, Keyhole (Tiny flake on top)
- 118 _____ 1236 Royal Blue 7 1/2" Ivy Ball, Keyhole
- 119 _____ 1236 Amethyst 7 1/2" Ivy Ball, Keyhole
- 120 _____ 1066 Crystal 7 1/2" Ivy Ball, Keyhole
- 121 _____ 1236 Carmen 7 1/2" Ivy Ball , Keyhole
- 122 _____ 1398 Crystal 13" Shallow Bowl, Etch Rose Point, Gold Trim (Nick at base & scratched)
- 123 _____ 3121 Crystal 2 1/2 oz. Wines, Etch Rose Point (6) (LOT)
- 124 _____ 3121 Crystal 6 oz. Low Sherbets, Etch Rose Point (6) (LOT)
- 125 _____ 3121 Crystal 1 oz. Cordial, Etch Rose Point
- 126 _____ 3121/1 Crystal 5 3/8" Tall Comport, Etch Rose Point
- 127 _____ 3900/41 Crystal Sugar & Creamer, Etch Rose Point, Pair
- 128 _____ 3500/15 Crystal Individual Sugar & Creamer, Etch Rose Point, Pair

129	_____	1532 Crystal Mayo, Liner and Ladle, Etch Rose Point
130	_____	3400/1186 Crystal 12 1/2" Sandwich Plate, Etch Rose Point
131	_____	3900/100 Crystal 6 oz. Oil, Etch Rose Point
132	_____	3400/11 Crystal Mayo & Liner, Etch Rose Point
133	_____	3400/62 Crystal 8 1/2" Salad or Luncheon Plates, Etch Rose Point, (8) (LOT)
134	_____	3400/176 Crystal 7 1/2" Salad Plates, Etch Rose Point, (8) (LOT)
135	_____	3400/60 Crystal 6" Bread and Butter Plates, Etch Rose Point, (6) (LOT)
136	_____	3400/141 Amethyst 80 oz Doulton Jug & (4) 1066 Flat Tumblers (Set)
137	_____	3500/15 Royal Blue Gadroon Individual Creamer and Sugar, Pair
138	_____	1309 Crown Tuscan 5" Globe Vase, Gold Encrusted, Etch Portia
139	_____	68 Carrara 10" Candlesticks, Pair
140	_____	3500/126 Crystal Gadroon, 4" Ash Tray, Etch 763 Minerva
141	_____	Crystal Old Home Week Paperweight 1921
142	_____	1371 Amber Bridge Hound
143	_____	1371 Ebony Bridge Hound (Ear Chip)
144	_____	3400/70 Multi 3 1/2" Cranberry, (1)E744 Apple Blossom Gold Krystal, (1) RCE 611 Crystal (Signed), (1) Willow Blue (Signed), (1) Light Emerald (CHOICE)
145	_____	3400/71 Multi 3" 4-toed Individual Nut , (1) Royal Blue(Signed), (1) Heatherbloom(Signed), (1) Peach-blo, (1) Forest Green (CHOICE)
146	_____	38 Mocha Caprice Cream and Sugar, Pair
147	_____	1238 Crown Tuscan 12" Footed Vase, Enamel Floral Design, Cold Paint
148	_____	Rubina 6 1/2" Tall and 7" Across, Comport, Honeycomb Optic, Great Color
149	_____	1612/1614 Crystal 16" Hurricane Lamp, E772 Chantilly Pair, (1 chip shade, 2 kinds of prisms)
150	_____	3500/79 Amethyst 3" Favor Basket , 5 1/2" tall
151	_____	3500/79 Crystal 3" Favor Basket , 5 1/2" tall
152	_____	124 Helio 3 1/2" Favor Basket, twisted handle
153	_____	121 Helio 3 1/2" Favor Basket, plain handle (Factory roughness inside)
154	_____	124 Ivory 3 1/2" Basket, 5" tall, twisted handle
155	_____	3011/7 Crystal Statuesque, 4 1/2 oz. Claret (no optic)
156	_____	3011/7 Carmen Statuesque, 4 1/2 oz. Claret
157	_____	3011/7 Royal Blue Statuesque, 4 1/2 oz. Claret
158	_____	3011/7 Amethyst Statuesque, 4 1/2 oz. Claret
159	_____	3011/7 Forest Green Statuesque, 4 1/2 oz. Claret
160	_____	3011 Crown Tuscan Statuesque, Ash Tray, Darker Crown Tuscan
161	_____	7801 Crystal 3 1/2 oz. Cocktail, Etch Imperial Hunt
162	_____	2631 Crystal Nearcut Marjorie Cream, marked "Near Cut"
163	_____	19 Crystal 4-Lock 4" Bobeche with (8) 3" prisms
164	_____	92 Helio 12" Stick Vase, Etch Egypt, Gold Band Décor
165	_____	90 Azurite 8" Stick Vase
166	_____	91 Ivory 10" Stick Vase
167	_____	1066 Amber 3 oz. Wine, Crystal stem and foot
168	_____	300 Moonlight Caprice 2 1/2 oz. Wine
169	_____	3120 Willow Blue 8 oz. Footed Tumbler, etch Gloria
170	_____	SS14 Crown Tuscan Seashell 9 1/2" Comport, Charleton Roses and Lake Scene
171	_____	500/25 Rubina Honeycomb 10" Bowl, (No Blue), Signed
172	_____	SS70 Crystal 5 1/2" Turtle Flower Frog

173	_____	358 Aurora Tall Samovar, Etch Martha
174	_____	2837 Crystal Nearcut Peacock Jug & (1) 8 oz. Table Tumbler
175	_____	2836 Crystal Nearcut Fish 1/2 Gal Tankard Pitcher
176	_____	SS45 Royal Blue Seashell (Snail) 52 oz. Jug, VERY RARE
177	_____	1315 Crystal 5" Rabbit Box and Cover
178	_____	3797/35 Crystal Cambridge Square 8" Rosebowl, Unusual Silver Overlay Floral Décor
179	_____	Crystal Cambridge Doorknobs, Original Fittings
180	_____	496 Tahoe Blue 12 oz. "Tall Joe" Tumbler
181	_____	274B Moonlight Bubble Base 10" Vase RARE
182	_____	Original 1958 Catalog in Box with Price Guide
183	_____	Original Turncards, Checks, and Invoices from Cambridge (8 Items) (LOT)
184	_____	Original Nearcut Catalog (Some Pages are Missing)
185	_____	112 Crystal 5" Open Lattice Plate (Early)
186	_____	Azurite 10" Open Lattice Cake Plate, RARE
187	_____	1528 Crystal 10" Vase, Shammed, Crackle with label UNUSUAL
188	_____	3400/69 Crystal After Dinner Cup & Saucer Etch Gloria, Signed (1)
189	_____	3500 Carmen Gadroon 1 oz. Cordial
190	_____	3075 Peach-blo 1 oz. Cordial
191	_____	3750 Crystal 1 oz. Cordial, Cut Euclid
192	_____	1402/100 Royal Blue Tally-Ho 1 oz. Cordial, Gold D1007-8, (Some Trim Wear)
193	_____	3011/13 Royal Blue Statuesque, 1 oz. Brandy
194	_____	7966 Royal Blue 1 oz. Tall Cordial
195	_____	1327 Carmen 1 oz. Cordial
196	_____	3575 Amethyst Stradivarius, 1 oz. Cordial
197	_____	3575 Pistachio Stradivarius, 1 oz. Cordial
198	_____	1066 Forest Green 1 oz. Cordial
199	_____	3779 Crystal 1 oz. Cordial, Etch Daffodil
200	_____	1402/13 Royal Blue Tally-Ho 1oz. Cordial
201	_____	1402/13 Carmen Tally-Ho 1 oz. Cordial
202	_____	3600 Crystal 1 oz. Cordial, Etch Chantilly
203	_____	8701 Peach-blo 8 oz. Flat Tumbler, Etch Golf Scene
204	_____	3035 Amethyst 1 oz. Cordial
205	_____	3126 Amber 1 oz. Cordial, optic HARD TO FIND
206	_____	3779 Crystal 1oz. Cordial, Etch Roselyn
207	_____	300 Moonlight Caprice 1 oz. Cordial
208	_____	3750 Crystal 1 oz. Cordial, RCE Ivy 1059
209	_____	300 La Rosa Caprice 1oz. Cordial
210	_____	7966 Crystal 1 oz. Cordial, RCE Lexington 758
211	_____	3114 Crystal 1 oz. Cordial, RCE 896 Candlelight V2, HARD TO FIND
212	_____	1402/100 Crystal 1 oz. Cordial, Etch Elaine
213	_____	3120 Crystal 1 oz. Cordial, RCE Achilles 698
214	_____	300 Mocha Caprice 1oz. Cordial
215	_____	3130 Amber 1 oz. Cordial, Etch Apple Blossom
216	_____	3103 Carmen 3/4 oz. Brandy
217	_____	3795 Crystal Sweetheart Sherbet (2) (LOT)
218	_____	243 Crystal Caprice Vase, Alpine

219	_____	3060 Blue Cloud 6 oz. Low Sherbet
220	_____	3130/2 White Rain 12 oz. Ftd. Tumbler
221	_____	1043 Crystal 8 1/2" Swan (Type 1), Signed
222	_____	Crystal Nearcut 4 Lines 8" Scalloped Bowl
223	_____	Crystal Standing Elephant 3 oz Candy (No Closure) RARE
224	_____	2844 Crystal Small Engine #999 1 1/2 oz Candy/Closure
225	_____	3900/136 Crystal 5 1/2" Comport, Etch Rose Point
226	_____	680 Amber Dresser Compact, Etch Early Wildflower, "Pat. Applied For", (Minor chip under lid)
227	_____	2780 Crystal Nearcut 7" Strawberry Candlesticks, Pair
228	_____	1242 Crystal 10" Vase, Rock Crystal Unknown Cutting
229	_____	3130 Crystal 7 oz. Tall Sherbet, Etch Rose Point, HARD TO FIND
230	_____	3400/152 Moonstone 76 oz. Jug, 1-handle, Frosted Interior
231	_____	138 Amber Round Sugar and Creamer, Signed, Pair
232	_____	979 Willow Blue Decagon Sugar & Creamer, Signed, Pair
233	_____	628 Amber Round 3 1/2" 1-Lite Candlesticks, Etch 727 Gold Encrusted , Pair
234	_____	64 Bluebell Cheese Comport, White Gold Rims
235	_____	1 Multi 5 Muddlers Carmen, Amber, Royal Blue, Forest Green, Crystal (CHOICE)
236	_____	3011 Carmen Statuesque, 4 1/2" Ash Tray 6 1/2" Over All Height
237	_____	627 Ebony 4" Candlesticks Pair
238	_____	165 Moonlight 6" Caprice Covered Candy
239	_____	498 Crystal 8 oz. Tumblers, Etch Rose Point (4) (LOT)
240	_____	498 Crystal 5 oz., Tumblers, Etch Rose Point (6) (Chip inside 1) (LOT)
241	_____	3400/115 Crystal 13 oz., Tumblers, Etch Rose Point (4) (LOT)
242	_____	3105 Amber Pressed Rose Point 12 oz. Iced Teas (2) (LOT)
243	_____	572 Crystal Pristine 6" Vase, Etch Rose Point, HARD TO FIND
244	_____	3121 Crystal 5 oz.,Cafe Parfait, Etch Rose Point(4) (LOT)
245	_____	3500/152 Crystal 11" 4 Part Celery/Relish, Etch Rose Point
246	_____	3400/48 Crystal 13" 4-Toed Crimped Bowl, Etch Rose Point
247	_____	3900/35 Crystal 13 1/2" Cake Plate, Etch Rose Point
248	_____	P248 Crystal 11" Celery, Etch Rose Point
249	_____	3105 Royal Blue Pressed Rose Point, 6 oz., Sherbet, (4) (LOT)
250	_____	3105 Amethyst Pressed Rose Point, 5 oz, Footed Tumbler
251	_____	3105 Royal Blue Pressed Rose Point Wine
252	_____	3400/647 Crystal 6", 2- Lite Candlesticks, Etch Rose Point, Pair
253	_____	3900/68 Crystal 5" 1-Lite Candlesticks, Etch Rose Point, Pair
254	_____	2760 Crystal Nearcut Daisy Handled Spooner, Signed
255	_____	2635 Crystal Nearcut Fernland 11" Plate, Signed
256	_____	2700 Crystal Nearcut Chesterfield Square Bowl 9" (Across Corners)
257	_____	602 Crystal Ruffled Coasters, Etch Chantilly (6) (LOT)
258	_____	3625 Crystal 7 oz. Tall Sherbets, Etch Chantilly (6) (LOT)
259	_____	3625 Crystal 3 oz. Cocktails, Etch Chantilly (4) (LOT)
260	_____	1338 Crystal Caprice 6" Triple Candlesticks, Alpine
261	_____	445 Moonlight Ladles for Caprice (2) (LOT)
262	_____	66 Moonlight Caprice 13" Bowl, Crimped, 4-Toed
263	_____	38 Moonlight Cream & Sugar, Pair

264	_____	200 Moonlight Caprice Tall Sherbets (4) (Lot)
265	_____	23 Moonlight Caprice 7 1/2" Salad Plates (5) (LOT)
266	_____	21 Moonlight Caprice, 6 1/2" Bread & Butter Plates (9) (LOT)
267	_____	842 Crystal Decagon 13" Bowl, RCE 639, Signed
268	_____	555 Crystal 8" Plates, RCE Candlelight 897 (2) (LOT)
269	_____	647 Moonlight 6", 2-Lite Candleabra (1)
270	_____	80 Moonlight Caprice 13", Salad Bowl, Cupped
271	_____	3650 Crystal Dinner Bell, Etch Wildflower, Label
272	_____	3130 Crystal Dinner Bell, Etch Portia
273	_____	3700 Crystal Dinner Bell, Etch Blossom Time
274	_____	3575 Crystal Stradivari Dinner Bell, Etch Diane
275	_____	W 112 Milkglass Seashell, Sugar and Creamer, Pair
276	_____	2699/338 Crystal Buzz Saw - 13" Punch Bowl, C Shape (Belled) and Foot, 13"Dia, 13" Ht, and 2699/125 Buzz Saw 5 oz. Cups, (12), All Signed, (Set)
277	_____	Amber, Royal Blue, Crystal Worker's Chain Portiere
278	_____	Carmen 10" Square Lattice Plate, RARE
279	_____	3400/152 Crystal 80 oz. Doulton Jug, Etch Rose Point
280	_____	119 Crystal 7" Basket, 10" Tall, Etch Rose Point
281	_____	P70 Crystal 20 oz. Ice Jug, Etch Rose Point
282	_____	P101 Crystal 32 oz. Cocktail Shaker, Etch Rose Point
283	_____	1402/131 Crystal Tally-Ho 8 1/2" 3 Compartment Bowl, Etch Rose Point
284	_____	3500/31 Crystal 6" Ram's Head Candlesticks, Etch Rose Point Pair
285	_____	3121 Crystal 7 1/2" Candelabrum with Bobeche & Prisms, Etch Rose Point, Pair
286	_____	3900/166 Crystal 14" Torte Plate, Rolled Edge, Gold Encrusted, Etch Rose Point
287	_____	3400/14 Crystal 7" Tall Comport, Gold Encrusted, Etch Rose Point
288	_____	498 Crystal 10 oz. Tumblers, Etch Rose Point (4) (LOT)
289	_____	1402/52 Amber Tally-Ho Ice Bucket with Handle
290	_____	1121 Peach-blo Round Ice Pail, Etch Tulip, Signed
291	_____	851 Amber Decagon Ice Pail, Etch Apple Blossom, Signed
292	_____	851 Peach-blo Decagon Ice Pail, Etch Apple Blossom, Signed
293	_____	3104 Gold Krystol Tall Hock (2) (CHOICE)
294	_____	72 Primrose 7" Star bottom Candlesticks, Pair
295	_____	639 Pomona Green 4 1/2" Candlestick, 447 6 3/4" Comport (LOT)
296	_____	115 Azurite 4" Ash Tray
297	_____	Azurite Cigarette Snuffer for 113 Ash Tray, (Flaw outside edge)
298	_____	511 Crystal Tombstone Bookends, Version 2, Pair
299	_____	155 Ebony 8" Cut Star Bottom Salad Plate, marked in 3 3/4" seat
300	_____	100 Helio 5" Covered BonBon
301	_____	34 Azurite 10" Bowl, Gold Encrusted D120 Rose Variant #2, on #7 Ebony base/foot
302	_____	937 Peach-blo 68 oz. Jug, Aero Optic
303	_____	1448 Crystal 10" Vase, Aero Optic, Label
304	_____	1330 Amethyst 5" Sweet Potato Vase
305	_____	3011/13 Gold Krystol Statuesque, 1 oz. Brandy, Optic
306	_____	3011/12 Crystal Statuesque 3 oz. Wine
307	_____	3011/12 Forest Green Statuesque 3 oz. Wine
308	_____	3011/29 Amber Statuesque, Mint Dish

309	_____	3011/25 Carmen Statuesque, 4 1/2" Ivy Ball, Flat Bottom Ball
310	_____	3011/25 Amethyst Statuesque, 4 1/2" Ivy Ball
311	_____	3011/25 Amber Statuesque, 4 1/2" Ivy Ball, Optic
312	_____	3011/25 Crystal Statuesque, 4 1/2" Ivy Ball, Optic
313	_____	66 Crystal Caprice, 13" 4 Footed Crimped Bowl
314	_____	124 Crystal Caprice 8" 3 Part Relish, #40 Caprice Ind. Sugar & Creamer, #96 Caprice Salt & Pepper, and #37 Caprice 6" Oval Tray (LOT)
315	_____	1 Crystal Caprice, 10 oz. Goblets (6) (LOT)
316	_____	301 Crystal Caprice, Low Sherbets (10) (LOT)
317	_____	165 Crystal Caprice, 6" 3-Toed Covered Candy
318	_____	1577 Crystal Caprice, 5-Lite Candlesticks, Pair
319	_____	300 Crystal 6" 3- Footed Candy with Cover, Carmen Rose Finial, (one petal slightly deformed)
320	_____	225 Crystal 9" Ball Stemmed Candlesticks, Unidentified Gold Encrusted Decoration, Pair, (Very Minor Gold Wear)
321	_____	31 Amber Everglade 16" Plate (Tulip Motif)
322	_____	244 Amber 10 1/2" Service Plate, Etch 703 Florentine, (Minor Surface Wear)
323	_____	244 Amber 10 1/2" Service Plate, Gold Encrusted 708, (Very Minor Gold Wear)
324	_____	244 Ivory 10 1/2" Service Plate
325	_____	107 Moonlight Caprice, 5 pc Condiment Set
326	_____	171 Moonlight Caprice 6" Diamond, Alpine
327	_____	1554 Crystal Small Cornucopia Candlestick
328	_____	647 Crystal Decagon Two-Lite Candlesticks, Etch Valencia, Pair
329	_____	615 Crystal 1 1/2 oz, Balsam Bottle with Stopper
330	_____	1042 Pink 6 1/2" Swan (Type 1), Signed
331	_____	119 Crystal 7" Handled Basket, Etch Wildflower
332	_____	588 Crystal Pristine 11" Vase, Etch Firenze
333	_____	3500/38 Crystal 13" Cake Salver, Etch Valencia
334	_____	39 Pomona Green 11 1/2" Bowl, Flat Rimmed, (Some Impurities in Glass)
335	_____	Pristine 520 Crystal 6", 2-Lite Candlelabrum with #25 Bobeche and #4 Prisms, Pair
336	_____	2 Crystal Arcadia sherbets (6) (LOT)
337	_____	9 Crystal Arcadia Goblets (4) (LOT)
338	_____	466 Crystal 6 1/2" Baked Apple Dish, Etch Willow
339	_____	W90 Milkglass Caprice, 3 oz. Oil
340	_____	P440 Moonlight Pristine 10" Star Bowl
341	_____	3500/41 Crown Tuscan 10" Urn and Cover, Gold Encrusted Chintz D/995, Acid Signature
342	_____	3011 Carmen Stauesque, 7" Cupped Comport
343	_____	1043 Crown Tuscan 8 1/2" Swan, Type I, Signed
344	_____	5456X Milkglass Sugar and Creamer, Brass Farber Holders/Tray (Set)
345	_____	3500/57 Crown Tuscan 3 Part Covered Candy, Charleton Gardenia
346	_____	581 Mulberry 4" Puff Box and Cover
347	_____	41 Crystal Nearcut Buzzsaw 7" Basket
348	_____	518 Moonlight 8 1/2" Draped Lady Flower Figure Frog
349	_____	518 Peach-blo Satin 8 1/2" Draped Lady Flower Figure Frog
350	_____	Turquoise 8" Trefoil Plate
351	_____	Turquoise 5" Gem Plate
352	_____	94 Ivory 7" Sweet Pea Vase

353	_____	1355 Moonlight Caprice Candlestick 2- Lite
354	_____	(Removed)
355	_____	12/366 Jade 10” Bowl and 8 1/2” Pair of Twist Candlesticks
356	_____	3400/96 Carmen 3 Piece Vinegar and Oil Set
357	_____	3400/96 Amethyst 3 Piece Vinegar and Oil Set
358	_____	3400/96 Royal Blue 3 Piece Vinegar and Oil Set, Labels
359	_____	3400/96 Crystal 3 Piece Vinegar and Oil Set, Etch Elaine
360	_____	3450 Crystal Nautilus 3 Piece 2 1/2 oz. Vinegar and Oil Set
361	_____	9 Crystal Frog, 1 3/4 “ high, Satin Finish
362	_____	3400/96 Gold Krystol 2 oz. Oil, Etch Apple Blossom
363	_____	396 Gold Krystol Shaker Set, 2 PC, Gold Plated Tops
364	_____	3400/177 Royal Blue Shaker Set, 3 PC
365	_____	3450 Carmen Nautilus Shaker Set, 3 PC
366	_____	3450 Royal Blue Nautilus Shaker Set, 3 PC
367	_____	710 Amber Letter Holder and Inkwell with Stopper (2) (LOT)
368	_____	1233 Crystal 9 1/2” Vase, Keyhole, Etch Diane
369	_____	1237 Crystal 10” Vase, Keyhole, D/1047 Gold Enrusted Wildflower
370	_____	3600/478/488 Crystal Martha, 15” 10-quart Punch Bowl, with 3600/488 - 5 oz. Punch Cups, set of 12, and ladle (Set)
371	_____	2699/424 Crystal Nearcut Buzzsaw 14” Vase, Original Metal Fittings
372	_____	2626 Crystal Nearcut Radium 11” Footed bowl, E shape
373	_____	2760 Crystal Nearcut Daisy Portable Electric Lampshade, Satin Highlights
374	_____	278 Crystal 11” Footed Vase, Non Cambridge Floral Cutting
375	_____	1242 Amber 10” Vase, (Slight Scratches)
376	_____	497 Crystal Martha, 7” Candlesticks, Version 2, Etch Wildflower, Pair
377	_____	1042 Peach-blo 6 1/2” Swan, Type I, Signed
378	_____	842 Peach-blo Decagon 12” Bowl, Etch Cleo, Signed
379	_____	28 La Rosa Caprice, 14” Footed Plate
380	_____	3500/57 Crystal 8” 3-Part Candy Dish & Cover, Etch Wildflower
381	_____	1066 Crystal 11 oz. Goblet, Etch Portia, (4) (LOT) UNUSUAL
382	_____	1066 Crystal 7 oz. Low Sherbet, Etch Portia, (4) (LOT)
383	_____	1402/94 Crystal Tally-Ho, 12” Celery, Etch Elaine
384	_____	Pristine 306 Crystal 6” Candy Box and Cover, Etch Magnolia
385	_____	3797/67 Ebon 4½” Cupped Candlesticks, Pair
386	_____	935 Crystal 64 oz, Jug, Silver Roses Decoration
387	_____	70 Crystal Caprice, 7” Candlesticks w/prisms, Pair
388	_____	72 Crystal Caprice, 6”, Two-Lite Candlesticks, Version 1
389	_____	1338 Crystal Caprice, 6”, Three-Lite Candlestick (1)
390	_____	647 Crystal 6” Two-Lite Candlestick (1)
391	_____	1307 Crystal 3- Lite Candlesticks (1 w/Bobeche Lock) (2 Plain) (3 Total) (LOT)
392	_____	2647 Crystal Dorothy Nearcut Water Bottle
393	_____	77 Crystal Stratford Tall Compote 2 Handled, Version 1
394	_____	1138 Crystal 8 1/2” Seagull Flower Figure Holder
395	_____	W105 Milkglass Seashell 9” 3 Footed Bowl
396	_____	Farber 5567 Forest Green Twin Blown Nappies in Farber Frame

Welcome to the eBay Report, featuring Cambridge glass items that sold on eBay over the past month. Selling prices are rounded to the nearest dollar. If no color is mentioned, assume that the piece or part of it being discussed is crystal. If I refer to an auction as "incognito," that means that the seller did not know he or she was offering Cambridge glass, and didn't use the word "Cambridge" in the description. I also mention if a listing was a Buy It Now offering, as opposed to an auction style listing. I think it's important to distinguish between the two, as the price for an auctioned item reflects competitive bidding (or no competition, if it sells for the opening bid.) Here we go:

Caprice

Three Moonlight Blue old fashioned cocktail glasses 7 ounces; 3 1/2" tall, and 3" in diameter sold for \$125.00.



One was noted with a small divot in the rim.

A beautiful pair of 3 light candlesticks in LaRosa; #1338, Version 1 with crosshatching on the balls sold for \$249.95 with one bid. An equally beautiful pair of 3 light candlesticks in LaRosa Alpine, #1338, Version 2 with smooth balls sold for \$249.95.



Four #300 footed tumblers; 6" tall; 10 ounces in La Rosa was listed for \$199.99 and sold for \$169.99.



A #36 large 11 3/4' 4 footed cake plate in Pistachio sold for \$37.00 with 5 bids.



Rose Point



A Pristine #306 candy box and cover, in excellent condition, sold for \$114.99.

A set of 8 cups and saucer, 3900/17 sold for \$195.00. Cambridge Rose Point Cups & Saucers, Set of Eight, 3900 Style

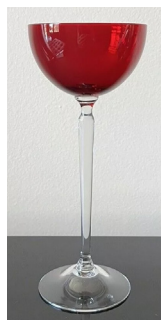


A Set of 5 Finger Bowls, 3126, 2" tall and 5" wide, sold for \$74.99. One was listed with a burst rim bubble.



Elegant Etches

This was listed as a pair of #739 etched yellow goblets; but in fact, one was a #3130 etched #739 Gold Krystol 9 ounce goblet, and the other a #3130 etched Gloria Gold Krystol 9 ounce goblet. They are 8 ½” tall. The pair sold for \$75.00.



A cocktail in the #3104 stem, Carmen with a crystal stem, 7 ½” tall, sold for \$99.00 each. Three were available.

Three 6” tall cocktails in Tally Ho; Royal blue bowl and crystal stem; #1402 with the rare Yukon etch sold for \$261.76 with 7 bids. From the same seller; two 7 ¾” tall goblets in Tally Ho; Royal blue bowl and crystal stem; #1402 with the rare Yukon etch sold for \$179.26 with 6 bids.



A gorgeous #299 5” Chantilly etched 3 toed covered candy box with a Carmen rose knob, sold for \$187.49.

Three 1 ounce #3075 cordials, 3 ¾” tall; etched Imperial Hunt Scene #718 in Amber, sold for \$150.00.

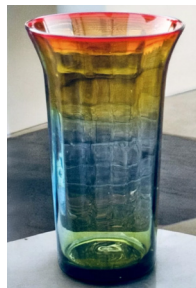


Other Great Glass

A stunning 3400/41 80 ounce Doulton pitcher; engraved King Edward sold for \$187.50 with 4 bids.

Great Cambridge Colors

An exquisitely colored and well photographed Rubina blown tumbler; 5 ½” tall, in Block Optic sold for \$107.08. It was listed in excellent condition.



A matched pair of Helio footed vases #85; 10” tall; etched Classic and gold encrusted; sold with one bid for \$189.99.



A pair of Rubina #438 candlesticks; 8 ¼” tall, noted in fantastic condition; sold for \$180.00.



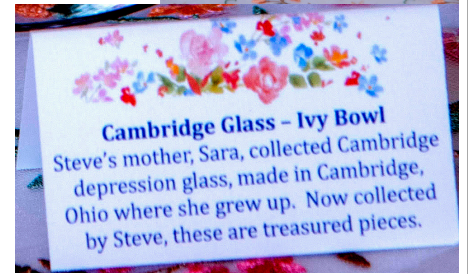
A rare Heatherbloom #41 covered urn in Martha Washington; 9 ½” tall; sold for \$139.99.

That’s it for now. I enjoy browsing eBay, but I might miss something interesting. If so, let me know. Until next time, happy Cambridge hunting! ■

Membership Corner

The Membership committee is looking for members to share their story of collecting Cambridge glass. What do you collect? How did you begin collecting? What are some of your favorite pieces? Our members love to read stories about your collecting experiences. And they especially love to see pictures of you and your glass!

NCC member Stephen Leinoff and Alisa Bonnette wed on July 28, 2024 in Claremont NH. Sara, my mother, grew up in Cambridge and passed along her love of Cambridge glass.



Here's some of the NCC members seen at the November glass show held in Dearborn Michigan.

Recent Finds



#628 3½" Candlestick, Light Emerald, with Gold Encrusted Non-Catalogued #1014 etch

Cambridge Glass Private Collection for Sale

A variety of items, including Rose Point 3121 stemware and many accessory pieces from the 3400, 3500 & 3900 lines. Nice Near Cut lamps as well as candlesticks, swans, and much more.

Items are located in Charleston SC.

Contact Kim Carpenter by email to request a listing. Prices negotiable
 bobandkim840@gmail.com

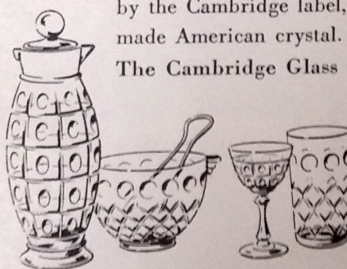


Aflame with beauty

... crystal brilliance for your finest settings

Cambridge hand-engraved rock crystal . . . supreme achievement in brilliant table glass! The magnificent designs, like this tasteful Lynbrook pattern, reflect every gleam of light with rare and fiery beauty—bringing gem-like brilliance to your prettiest table. More and more do discerning women choose by the Cambridge label, symbol of the finest hand-made American crystal.

The Cambridge Glass Company, Cambridge, O.



For your next party . . . Be it beverage sets, formal buffet pieces or candelabra, there's a sparkling array of Cambridge engraved rock crystal to lend dash or dignity to all occasions.



Cambridge
hand-engraved rock crystal

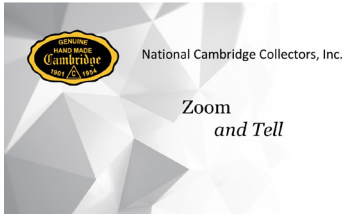
House and Garden, October 1950

NCC Events

**Spring Membership Meeting
Friday, March 14, 2025**

**2025 NCC Benefit Auction
March 15, 2025**

**2025 NCC Convention
June 26-28, 2025**



Contact membership@cambridgeglass.org if you don't get the monthly email with the Zoom information.

January 14	Favorite Purchases from 2024
February 11	Farber Brothers
March 11	2-Light Candlesticks
April 8	Puff Boxes and Vanity Boxes / Compacts

New Members

Timothy Cheval NY

*Help spread the benefits of being a
"Friend of Cambridge"*

CLASSIFIEDS

Nothing this month. What are you looking for?

Glass Shows

January 18-19, 2025

Cartersville Glass Show
Cartersville Civic Center
425 W. Main St.
Cartersville, GA
doubleupromotions@gmail.com

January 25-26, 2025

Jacksonville Antique Glass & Depression Glass Show & Sale
Fraternal Order of Police Building
5530 Beach Boulevard
Jacksonville, FL
<http://www.depressionglassclubjax.com/>

January 31 - February 2, 2025

South Florida Depression Glass Club
Vintage American Glass and Pottery Show & Sale
Tamarac Community Center
8601 West Commercial Blvd
Tamarac, FL
<https://sfdgc.com/>

February 8-9, 2025

Clearwater Elegant & Depression Glass Show & Sale
Morningside Recreation Complex
2400 Harn Blvd
Clearwater, FL
gingerbreadantiques77@gmail.com

February 15-16, 2025

The Houston Glass Show & Sale & Best Little Antique Show
Fort Bend County Fairgrounds
Hwy 36 and Hwy 59
Rosenberg, TX
<https://maxmillerantiques.com/>

February 22, 2025

47th Annual Green River Glass Show & Sale
Kent Commons
525 4th Ave. N.
Kent, WA 98032
<https://www.facebook.com/profile.php?id=458441317686889>
marciajenkins54@gmail.com

March 8-9, 2025

20-30-40 Glass Society of Illinois presents
52nd Annual Glass Show & Sale
Holiday Inn Chicago SW-Countryside Conference Center
6201 Joliet Rd.
Countryside, IL 60525
<http://20-30-40glassociety.org/>

Recruit
and
Retain

Give this page to a friend



The National Cambridge Collectors
P.O. Box 416 ~ Cambridge, Ohio 43725

“FRIENDS OF CAMBRIDGE” MEMBERSHIP

The National Cambridge Collectors, Inc. (NCC) is a non-profit organization dedicated to the education and preservation of the great work of the Cambridge Glass Company. Founded in 1973, we depend on the financial support of our members, who we call **Friends of Cambridge**, for the majority of our operating budget. Won't you consider becoming a Friend of Cambridge?

Friend #1 _____

Friend #2 _____

Friend #3 _____

Continue on reverse if needed - indicate any children

Address _____

City/State/Zip _____

Email Address (required) _____

Phone Number _____

Crystal Ball newsletter delivery: ___ email (color) ___ paper (black & white) ___ both

Glass collecting interest: _____

Include my information in the Membership Directory: ___ Yes ___ No

(The Membership Directory is only available to other NCC members)

New Member? (Y/N) ___ or Renewal? ___ If renewal, Member #s _____

Levels of Membership

___ Century Level	\$ 100	___ Patron	\$ 35
___ Japonica Level	\$ 500	___ Mardi Gras Level	\$ 200
		___ President's Circle	\$ 1,000

All members receive the Crystal Ball, free Museum admission and 10% off any book/DVD purchases, President's Circle includes Convention registration for two members in the household and one free copy of any new NCC publication.

All memberships are renewed annually via The Annual Fund mailing in late March/early April. All Annual Fund gift recognition levels are per household and include membership for everyone within the household 18 and older. Each household will receive a subscription to the Crystal Ball newsletter, unlimited admissions to the museum, and rights to vote in elections for the Board of Directors and discounts on NCC books. NCC is a 501(c)(3) organization and Annual Fund gifts are allowed as a tax deduction under Section 170 of the Internal Revenue Code. Contact your tax advisor for your individual situation.

Return this form with check or money order payable to NCC, Inc. at the above address.
And always visit us at www.cambridgeglass.org to see what's new!

National Cambridge Collectors, Inc.
PO Box 416
Cambridge OH 43725
email: editor@cambridgeglass.org
website: www.cambridgeglass.org



***The National Museum
of Cambridge Glass***
National Cambridge Collectors, Inc.

***Open April thru October
only***

