



# Cambridge Crystal Ball

Published by the National Cambridge Collectors, Inc. as a resource which informs, invites and inspires people to encourage the continued preservation of the glass produced by the Cambridge Glass Company of Cambridge, Ohio for future generations.

Issue No. 564

ISSN 2474-5987

January 2023

## NEARCUT #2651 - Feather by Ruth Forsythe

*Reprinted from Crystal Ball: May 1973*

There is no other pattern quite like the FEATHER, so it is not a confusing pattern. On a piece, you will find a row of feathers standing erect around the lower half of the body. Above the feathers, is a horizontal band of large hexagonal buttons with pinwheels inside. Each of the buttons is inside a larger diamond, the points of which extend above and below the band. Most pieces have a rosette or rayed bottom and some have both. Bowls, cracker jars, etc., have scalloped tops. Drinking vessels such as wines, tumblers, etc. have plain edges at the top. On handled pieces, the handle is zippered down the back.

FEATHER pattern was made in four-piece sets (sugar, creamer, spooner, and butter), various sizes of vases, handled baskets, tumblers, various sizes in pitchers, pickle and celery vases, carafes, toothpicks, whiskey jugs, decanters, wines, goblets, candy dishes, footed sherbets, custard cups, punch bowls, many sizes of nappies and bowls, plates, two sizes of salvers, many sizes of footed compotes and probably other pieces at various times.

The wholesale price for tumblers was 80¢ per dozen.



Cream



Sugar



Spooner



Covered Butter

### *What's Inside*

NEARCUT #2651 - Feather .....	1
President's Message .....	3
It's a Wrap – Museum 2022 .....	4
NCC Mould Storage Building Update .....	7
2023 Benefit Auction Information .....	8
2023 Benefit Auction Listing .....	9
Zoom & Tell: Aurora, Night Blue, Bluebell & Ritz Blue .....	17
eBay Report .....	18
Membership Corner .....	20
In Memoriam .....	20
New Members .....	20
Volunteer Opportunity .....	20
NCC Events .....	22

# National Cambridge Collectors, Inc.

PO Box 416 Cambridge, OH 43725-0416

## Board of Directors

	2023	
Nancy Misel	Lindy Thaxton	Lynn Welker
	2024	
Cindy Arent	Larry Everett	Mike Strebler
	2025	
Ken Filippini	Freeman Moore	Christine Smith
	2026	
Julie Buffenbarger	David Rankin	Frank Wollenhaupt

## Officers

President	Freeman Moore
Vice-President	Ken Filippini
Secretary	Christine Smith
Treasurer	Mike Strebler
Sergeant-at-Arms	Larry Everett

## Committees

Endowment	Membership
Finance	Technical Decision
Property	Digital Strategy
Strategic Planning	Digital Preservation

## Vice President

Member Relations  
Convention  
Member Social Media  
Glass Dash  
Glass Show  
Study Groups  
Webmaster

## Member Services

Freeman Moore  
Freeman Moore, Membership Database  
Julie Buffenbarger & Christine Smith  
David Ray  
Larry Everett & Frank Wollenhaupt  
David Ray, Mike Strebler, Jack Thompson  
Jeannie Moore, Study Group Coordinator  
David Adams

## Development

Julie Buffenbarger  
Ken & Jane Filippini, Annual Fund Directors  
Larry Everett, Director of the Heritage Society  
Lindy Thaxton,  
Lynn Welker, Auction Managers  
Susan Everett & Frank Wollenhaupt, Jewelry  
Convention: Jonathan Fuhrman

## Education

Jack Thompson  
Freeman Moore, Editor  
Dave Rankin  
(open)  
Larry Everett, Director of Publications  
Dave Rankin, Director of Media Productions  
Dave Rankin, Director

## Museum

Cindy Arent  
Lindy Thaxton, Director of Public Operations  
Cindy Arent,  
Joe Miller,  
Lindy Thaxton  
Lindy Thaxton, Director of Inventory Management  
Lynn Welker, Director of Collections  
Cindy Arent, Gift Shop Manager  
Lynn Welker, Gift Shop Manager  
Mark Nye, Director of Archives  
Cindy Arent, Director  
Cindy Arent

## Administration

Larry Everett  
Lisa Neilson, Office Manager

## Vice President

Accounting & Finance

## MEMBERSHIP QUESTIONS?

Please send address changes to:  
Membership - NCC  
PO Box 416  
Cambridge, OH 43725-0416  
or by e-mail to:  
[membership@cambridgeglass.org](mailto:membership@cambridgeglass.org)



## CONTACT US

NCC Business Manager  
Phone: 740 432-4245

[businessmanager@cambridgeglass.org](mailto:businessmanager@cambridgeglass.org)



Freeman Moore, President

e-mail: [president@cambridgeglass.org](mailto:president@cambridgeglass.org)

Christine Smith, Secretary

e-mail: [secretary@cambridgeglass.org](mailto:secretary@cambridgeglass.org)

## Heritage Society

*Ensuring the preservation mission of the NCC through planned giving and estate bequests.*

Members of The Heritage Society are those who have included the NCC in their wills or estate plans, thus providing the organization with a secure future.

The mission of The Heritage Society is to foster smart estate planning and to assure that NCC is not forgotten as an important beneficiary. Any pledge is meaningful and appreciated.

All Cambridge collectors - both current and future - will benefit from, and be grateful for your support.

Let us know how we can help with your future plans.

## Museum:

National Museum of Cambridge Glass



Like us on Facebook

Member: Cambridge Glass/National Cambridge Collectors

NCC Website: [www.CambridgeGlass.org](http://www.CambridgeGlass.org)

NCC Museum Website: [www.cambridgeglassmuseum.org](http://www.cambridgeglassmuseum.org)

Miami Valley Study Group Website: [www.mvsg.org](http://www.mvsg.org)



# PRESIDENT'S MESSAGE

## *Welcome to 2023!*

I'm happy to report that the year 2022 was much better for NCC than the year 2021. Of course, better for NCC means we were able to do things that benefit you, our *Friends of Cambridge*.

**March:** After missing 2 years, we finally had a March auction in the month of March. Our auction committee worked hard to have a successful event, which was challenging since we just had an auction the previous October.

**April:** We sent out our initial mailing for the Annual Fund along with ballots for the Board of Directors. The Annual Fund is your opportunity to renew your support for NCC, and your response was comparable to year 2021, which exceeded our expectations. Thank you.

**June:** Ah, the excitement of events held during the last weekend in June. Thanks for our many volunteers who helped put on the convention with programs and meals, glass show, glass dash, as well as those who helped out at the museum. I know that only a minority of our members are able to attend the convention and related activities. Let me know how we can meet your expectations and help you feel connected with the organization.

**October:** If you wanted to learn about the Everglade, Leaf, and Arcadia lines, the program at the fall meeting presented an impressive collection of items.

**Monthly:** We continued having our monthly Zoom and Tell sessions, which start with an educational component, followed by members showing glass from their collections related to that month's theme. Thanks to everyone who presents as well as those who watch.

**Board activities:** The Board of Directors meet on a regular basis to provide oversight to the organization. The five operational vice-presidents (Administration, Development, Education, Member Services and

Museum) report every time about what is being worked on in their areas. Our most active committee is the Finance Committee which meets monthly; while other committees meet and report as needed. A summary of our year 2022 finances should be in the February Crystal Ball after the report is approved by the Board.

The Board reviewed the results of the membership survey and is working some actions. We are reviewing our constitution and by-laws to address some concerns. The new Membership Committee will be working on how to have an optional membership directory available. A committee has started reviewing our websites to determine requirements for an integrated online presence. Thanks to the perseverance of one board member, you might see a historical marker in front of the museum parking lot this year.

### *What's coming?*

I'm excited to see the March Benefit Auction listing in this issue. As before, you can submit absentee bids if you are not able to attend in-person. Otherwise, I hope to see you March 17-18.

What's on your Cambridge "wish list" for this year and beyond, and how can we help?

Stay energized and share the word!

Sincerely,

Freeman Moore  
[president@cambridgeglass.org](mailto:president@cambridgeglass.org)





# It's a Wrap – Museum 2022

By Cindy Arent

This year at the Museum, many new friends were made, good publicity was received and memories were made! There are many working parts that need to be aligned to pull off a successful season, most of which people don't even realize are going on behind the scene.

Organization is the key to presenting the Museum in the best possible way. We receive many compliments on the way we handle daily visitors and both large and small groups. A few of the areas addressed each day by volunteers are:

Safety and Security of the Museum Building and Grounds: Sidewalks are cleaned, restrooms sanitized, counters and door knobs are disinfected. Visitors often comment about the cleanliness of the building and glass displays, they feel safe visiting.

Volunteer and Docent Staffing: Whether it is regular working day or we're hosting a large group, one paid docent is scheduled and additional volunteers are at the museum. We never know when twenty people might arrive close to the same time.

Group Tour Operations: This is a time-consuming task. The bus groups sometimes schedule a year in advance. It is important to keep the list current and available for additional scheduling. At least seven volunteers need to be scheduled for each group and arrive at the Museum thirty minutes early. On many occasions, we have had groups running an hour late or arriving early. We need to be ready. As we are busy greeting the last of the 2022 groups, I am receiving calls for next year. We already have eight coaches booked for 2023.

Glass Display Maintenance: Throughout the season, we are constantly removing fingerprints from the showcase doors. We also do the "illusion" on a few pieces of silver overlay and carefully dust shelves. The next time you visit the Museum, just ask for the clipboard to do bug patrol.

Social Media and Marketing: Facebook posts are made frequently about what is happening at the Museum

and photos from the Gift Shop are added. This is the best way to get news out quickly. I receive messages and calls from NCC members around the country asking about certain pieces in the Gift Shop and it's so nice to chat with them. Thank you!

Community Communication: We need to stay informed about what other community organizations are planning. We attend meetings throughout the year with Cambridge Main Street, Cambridge Area Chamber of Commerce, Dickens Victorian Village and the Cambridge/Guernsey County Visitors & Convention Bureau. We learn from attending these meetings, helping to provide a better Museum experience.

Gift Shop Stocking: this includes cleaning, rotating glassware, packing material, gift boxes and shopping bags.

Preparation: We have learned to be ready for anything that might happen during daily operations and look forward to the 2023 season!

Thank you all for your support and best wishes for a Happy New Year! ■



Jeff Ross climbs the ladder to the roof several times each year to be sure there is no standing water and to remove the debris around the drains. On this day Jeff was happy to find only one leaf on the roof! Of course, he had just cleared it the week before.





AAA Akron visits the Museum each year during the Holiday Season and they are such fun to host.

(L-R) Sharon Miller, Sandi Rohrbaugh, Sharon Bachna, Marilyn McKelvey, Lindy Thaxton, Anna Marie Pavlov, Cindy Arent, Eric Wertz/AAA Akron, and Laura King.



Victoria Kaniowski and her children are the fifth and sixth generation of the McManus family. Hugh McManus made the first piece of Cambridge Glass in May, 1902. Thank you for purchasing your annual Cambridge Glass ornament!



Museum volunteer Sandi Rohrbaugh (top of photo) helps customers with a Cambridge Square purchase in the ladies restroom. Louise Jones (right) and her family visit the Museum every year during the holidays.





Another Museum tradition! Each year NCC members Nathan and Jill Koman and family visit during the Holiday Open House and take a family photo dressed as glassworkers. We can't believe how much the children have grown over the years!



A few years ago, Tom (center of photo) began stopping at the Museum to see if we needed any nice white gift boxes, FREE. He has become our friend and has given us 100's of boxes. This year he brought us each a little gift. Thank you, Tom! (L-R) Laura King, Sandi Rohrbough, Lisa Neilson, Tom, Cindy Arent and Anna Marie Pavlov.



On December 1<sup>st</sup> we hosted three large bus groups throughout the day. Since there wasn't time for lunch, we had snacks on the etching plates to keep us going. Clockwise from bottom: Diana McMahon, Lindy Thaxton, Marilyn McKelvey, Sharon Miller, Joey Pirl and Sharon Bachna.





Holiday Tour  
Volunteers:  
Jeff Ross,  
Sharon Miller and  
Joey Pirl.



Our volunteers are  
always ready to greet  
each guest with a  
smile. (L-R) Sharon  
Bachna, Sandi  
Rohrbough and  
Marilyn McKelvey.



Many thanks to Jack and Elaine Thompson  
for finding and donating the 3750 "White  
Christmas" champagnes, engraved Bexley,  
for the Museum Gift Shop this year. They  
sold out within two hours!

## NCC Mould Storage Building Update

By Cindy Arent

We would like to sincerely thank Lindy Thaxton and Jeff Ross and family for all the organizational and clean-up work done at the Storage Building this fall. A few very old file cabinets were recycled and well as metal desks. Original wooden factory work tables were moved off the floor so the moisture would not cause damage to each piece. Most of the old metal folding tables have found their way to area schools and metal folding chairs were donated to the non-profit Community Development Corporation for use at the Great Guernsey Trail functions. As you can see from the photos, the building is in much better shape. More work will continue this winter and spring.

**THANK YOU!**





# National Cambridge Collectors, Inc.

## 2023 Benefit Auction

Saturday, March 18, 2023

Pritchard Laughlin Civic Center

7033 John Glenn Hwy • Cambridge, Ohio

### INFORMATION

Preview at 8:30 a.m. Auction starts at 9:30 a.m.

Craig Connelly, Auctioneer Admission: \$2.00

All glass in the auction is guaranteed to be Cambridge. The Auction Managers have checked all glass carefully for verification and damage. Any piece purchased should be examined immediately by the purchaser, and returned within five items if not as represented. All damages are indicated in this catalog; last minute changes or addenda will be announced by the Auction Managers immediately prior to the auction. If no color is indicated herein, the item is crystal. There are no reserves and no buyer's premiums are charged. Photographs of auction attendees and activities may be taken for NCC promotional purposes.

**TERMS:** Payment is expected in cash the day of the sale; checks will be accepted with proper identification.

**CATALOG:** Lots will be sold in the order printed herein. A number in parenthesis ( ) at the end of a listing indicates the number of that item available for sale. The auctioneer will announce whether such multiples are being sold individually or as a lot. If multiple items are being sold individually, a winning bidder may take any number available. If the catalog indicates "set," "pair" or a similar term, the lot is sold as such.

**ABSENTEE BIDS:** Anyone wishing to bid absentee, may do so by mailing their bids to the Auction Committee at the address below. All bids must be received by the end of Thursday prior to the auction to be eligible, so please allow enough time for the postal service to do its thing. **They must contain all the following information:**

- List showing the lots desired and the maximum bid for each lot.
- Valid Credit Card, VISA & MasterCard accepted. The following is required for a proper credit card transaction:
  1. Exact name as it appears on the card
  2. Expiration date
  3. 3-Digit Security Code on the back
  4. Exact address credit card statement is billed to
  5. Phone number
- Address where winning lot(s) are to be shipped to.

Bids will be executed secretly and a winning bidder will pay only the final auction price. If there are multiple absentee bids for the same lot, bidding will commence on the floor at the second highest bid, effectively shutting out all by the highest absentee bidder.

**Shipping:** Items can be shipped to street addresses only. WE CANNOT SHIP TO P.O. BOXES. If you are the successful bidder, your credit card will be charged as follows: **Final auction price + 5% transaction fee + cost of shipping.**

**MAILING ADDRESS:** All absentee bids must be mailed to:

**NCC Auction Managers**

**P.O. Box 416**

**Cambridge, OH 43725**

**BIDS MUST BE RECEIVED BY  
THURSDAY, MARCH 16, 2023 TO BE ELIGIBLE**

**QUARTERLY MEETING:** The Quarterly Meeting of the NCC will be held on Friday, March 17 at 7:30 p.m. A preview of the auction glass will be presented. Show & Tell glass is also welcome at the meeting. All are welcome!

For additional copies of the catalog listing as well as detailed information on the entire auction, please visit the website at <http://www.cambridgeglass.org> under **Annual Auction**.

**Additional copies of this catalog are included with admission to the auction.**

## 2023 NCC Benefit Auction Listing

1	_____	54 and 55 Forest Green Martha Washington 8 oz steins (2), 10 oz.Stein (1)
2	_____	46 Crystal 10 “ Mt. Vernon Vase
3	_____	1528 Smoke 10” Vase
4	_____	W115 Milk 18” Everglade Tulip Plate
5	_____	3122 Crystal 5 oz. Footed Tumblers, Etch Diane (6)
6	_____	1715 Mult Colors 4 piece Stackaway Ashtrays on Chrome Holder (Amber/Royal/Amethyst/Forest)
7	_____	245 Moonlight Blue Caprice 6” Vase, Smooth Top
8	_____	3500/15 Royal Blue Gadroon Individual Creamer & Sugar (Pair)
9	_____	3300 Light Emerald Moderne Individual Creamer & Sugar (Pair) (Signed)
10	_____	2647 Crystal NEARCUT Dorothy Punch Bowl, Base and 6 Cups (bowl is embossed “Ripin’s Special, Ripin and Company, New York”, inside bowl)
11	_____	39000/129 Crystal 2-pc Mayo Set, Etch Wildflower
12	_____	3400/52 Crystal 5” Butter & Cover, Etch Wildflower
13	_____	1349 1307 Crystal 12” Crimped Footed Bowl Etch Rose Chintz, and 2 -Lite Candlesticks Etch Rose Chintz (Pair)
14	_____	518 Peach-blo 8 ½” Draped Lady Flower Figure
15	_____	274 Crystal 10” Bud Vases, Etch Wildflower (1 Plain, 1 Gold Rim) <b>CHOICE</b>
16	_____	3500/69 Crystal 6 ½” 3-Part Relish, Etch Wildflower Gold Encrusted (original sticker)
17	_____	3900/130 Crystal 7” 2-Handled Footed Bonbon, Etch Wildflower Gold Encrusted (2) <b>CHOICE</b>
18	_____	3500/57 Crystal 8” 3-compartment Candy Box and Cover, Etch Wildflower
19	_____	1357 Crystal Caprice 3-lite 6 1/2” Candlesticks (Pair)
20	_____	1402/61 Carmen Tally-Ho Low Ftd. Mint Compote
21	_____	319 Carmen Georgian 9 oz.Tumblers (6)
22	_____	3450 Carmen Nautilus 28 oz. Decanter,No Stopper
23	_____	41 Moonlight Blue Caprice Large Sugar and Creamer (Pair)
24	_____	22 Moonlight Blue Caprice 8 ½” Plates (8)
25	_____	21 Moonlight Blue Caprice 6 ½” Plates (8)
26	_____	300 Moonlight Blue Caprice 5 oz. Ftd. Tumblers (8)
27	_____	300 Moonlight Blue Caprice 4 ½ oz.Oyster Cocktails (6)
28	_____	112 Moonlight Blue Caprice 3 Piece Salad Dressing Set
29	_____	7 Ebony Tuxedo 12 oz. Ftd. Tumblers, Ebony Foot (8)
30	_____	3400/52 Amber 5 ½” Butter & Cover, Square Knob, Signed
31	_____	979 Peach-blo Decagon Cream & Sugar, Signed
32	_____	W124 Milk Caprice 4 ½” Vase
33	_____	1630 Willow Blue 12 oz. Tumblers, Etch #710 (2)
34	_____	1337 Amethyst Cigarette Holder, Ashtray Foot
35	_____	1321/7966 Amber 5-Pc. Sherry Set {#1321 - 28 oz. Ftd. Decanter & #7966 - 2 oz. Sherries (4)}
36	_____	7 Amber Everglade 11” 3 Toed Bowl
37	_____	1917/88 Crystal Half Pound Candy Jar & Cover, Unidentified Gray Cutting
38	_____	3011 Forest Green Statuesque 7” Comport, Flared
39	_____	3121/1 Amber 5 ¾” Tall Comport
40	_____	701 Crystal or Peachblo Laurel Wreath Place Cards, Crystal or Peachblo <b>CHOICE</b>
41	_____	SS66 Crown Tuscan 4” Sea Shell Ftd. Candlestick (Pair) (color mismatch)
42	_____	94 Ivory 7” X 8 ¾” Sweet Pea Vase
43	_____	1713 Mandarin Gold 4 pc. Smoking Set
44	_____	877 Willow Blue Decagon 9 ½” Footed Comport, Decalware
45	_____	2647 Crystal Nearcut Lotus7 oz. Cruet w/ Stopper
46	_____	3795 Crystal Sherbet (heart stem) (Version 1)
47	_____	500 Light Emerald 6” Covered Candy Honeycomb, Silver Overlay Floral
48	_____	1448 Forest Green 10” Vase, Aero-Optic
49	_____	1130 Crown Tuscan 11” Ftd. Vase, Etch Portia, Gold Encrusted

50	_____	937/1630 Peach-blo Beverage Set: #937 - 68 oz. Oval Jug & #1630 - 12 oz. Tumblers (6), Etch Chrysanthemum
51	_____	W105 Milk Sea Shell 9" 3 Toed Bowl
52	_____	1066 Bluebell 2 ½ oz. Light Blown Tumblers (6)
53	_____	SS46 Crown Tuscan Sea Shell 7 ½" Flower Holder
54	_____	627 Ebony 4" Candlesticks (Pair)
55	_____	84 Light Emerald 12" Vase, Etch Betty
56	_____	83 Crystal 8" Vase, Etch Betty, (Pair) (1 Slightly cloudy)
57	_____	3011/2 Carmen Statuesque 9" 11 oz. Table Goblet
58	_____	3500/26 Crystal 12" Ram's Head Fruit Basket, Etch Valencia
59	_____	3126 Amber 9 oz. Goblets (2)
60	_____	Modern Moonlight Blue Candy Jar & Cover
61	_____	Modern Smoke Candy Jar & Cover
62	_____	3400/96 Crystal 3-Piece Oil & Vinegar Set (2) 2 oz. 1-handle, Ground Stoppers, 3400 Tray, Center-handle, Etch Diane
63	_____	438 Rubina 7 ½" Candlesticks (Pair)
64	_____	864 Madeira 6" 3-Toed Candy Box & Cover, Etch #727
65	_____	#1 Golden Rod or Golden Showers Centennial Ftd Sugar
66	_____	#3060 Blue Cloud Sherbet, original label, tiny flaw in edge
67	_____	1402/62 Crystal Tally-Ho 4" Tall Comport, D1007 Black and Orange Enamel
68	_____	169 Golden Rod or Golden Showers Liner Plate
69	_____	127 Crystal Chelsea 8" Basket, 12 ½" Tall
70	_____	118 Ivory 8" Basket, 13" Tall (Trim Wear)
71	_____	445 Ivory Ladle
72	_____	693/1021 Ebony Canape Set, Crystal with Ebony Foot 3 oz glass
73	_____	693/3000 Crystal Canape Set, 3 oz Glass, Platinum and Red Bands
74	_____	81 Ivory 13 ¼" Vase, Gold Trim
75	_____	30 Willow Blue Everglades 16" Swans Plate
76	_____	31 Crystal Everglades 16" Tulip Plate
77	_____	30 Crystal Everglades 16" Swans Plate
78	_____	439 Crystal Martha 11" Cheese and Crackers Set, Gold Trim
79	_____	445 Crystal Martha 12 ½" 4 Ftd Bowl, Etch Chantilly
80	_____	3900/100 Crystal 6 oz. Oil Cruet, Etch Chantilly
81	_____	1603 Crystal 11" Hurricanes, No Bobeches, Etch Chantilly
82	_____	246 Crystal Martha 11" Celery, Etch Chantilly
83	_____	1338 Crystal 6" 3-Lite Candlesticks, Etch Chantilly (Pair)
84	_____	Moonlight Blue Caprice Cheese Stand, <b>HARD TO FIND</b>
85	_____	5 Moonlight Blue Caprice 4 ½ oz Clarets (3)
86	_____	7 Moonlight Blue Caprice 4 ½ oz Oyster Cocktails (3)
87	_____	300 Moonlight Blue Caprice 3 oz. Cocktails (4)
88	_____	511 Crystal Tombstone Bookends Version 2 (Pair)
89	_____	Crystal Blown comport, Etch Chantilly, in Sterling Frame
90	_____	870 Crystal Decagon 11" Ctr Handled Sandwich Tray, Etch Lorna
91	_____	55 Ebony 6" Basket, Square , Charleton Roses and Gold Décoration
92	_____	1066 Charcoal 3 oz. Cocktails with Gold Stem (2) <b>CHOICE</b>
93	_____	1636 Crystal 4 ½" Peg Bluejay
94	_____	3500/97 Crystal Rose Point 14" 4 Compt. Celery and Relish
95	_____	3011/14 Carmen Statuesque 1 oz. Cordial
96	_____	509 Amber 2 Kid Flower Figure
97	_____	1335 Royal Blue 12" Vase
98	_____	1330 Carmen 5 in. Sweet Potato Vase
99	_____	103 Carmen Mt. Vernon 8" 3 Compartment Relish, Signed
100	_____	1044 Amber 10" Cambridge Swan, Style 1 Signed



101	_____	1044 Peach-blo 10" Cambridge Swan, Style 1 Signed
102	_____	1045 Crystal 13" Cambridge Swan, Style 3
103	_____	6004 Mandarin Gold 6" Footed Vase
104	_____	253 Pristine Crystal Individual Cream and 2 Handled Sugar, Etch Rose Point
105	_____	40 Crystal Caprice Individual Cream & Sugar
106	_____	33 Crystal Caprice 14" 4-Footed Cabaret Plate (Scratched)
107	_____	130 Crystal Mount Vernon 4" Candlesticks (Pair)
108	_____	2699/1 Crystal Nearcut Buzz Saw 2 Handled Sugar and Cover, Signed
109	_____	3500 Carmen 7" Cigarette Holder with Ashtray Foot
110	_____	1263 Amber Oil/vinegar Bottle, Etch Rosalie
111	_____	500/122 Amber 56 oz. Pitcher & Cover, Matching 12 oz. tumblers (5), Basketweave
112	_____	3500/41 Crown Tuscan 10 " Urn Etch Portia, Gold Encrusted , Acid Signature
113	_____	1070 Amethyst 36 oz. Pinch Decanter with Original Stopper
114	_____	3011 Amethyst Statuesque 10" Ivy Ball, Amethyst Bowl with Crystal ST/FT
115	_____	1238 Crystal 12" Ftd Vase - Keyhole with Gold Rims, Etch Elaine, Camb Label
116	_____	Amber Perfume with Dauber, Original Barrel Stopper
117	_____	2800/235 Primrose Community Covered Powder Jar
118	_____	1005 Crystal 6 ½" Vase, Etch 732, Ebony Foot
119	_____	102 Helio 6" Covered Candy Dish or Bath Box
120	_____	1242 Peach-blo 11"Vase, Etch Gloria
121	_____	518 Moonlight Blue 8 ½" Draped Lady Flower Figure
122	_____	1115 Peach-blo(Dark) 11" Bashful Charlotte Flower Figure, Original Label
123	_____	513 Amber 13" Draped Lady Flower Figure
124	_____	W109 Milk 8" Dolphin Square Base Candlesticks (Pair)
125	_____	405 Willow Blue 9 ¾" Flat Rim, Footed, Bowl, Aero Optic, Etch Majestic
126	_____	12 Pomona Cheese/Cracker Set
127	_____	Windsor Blue Sea shell 4" Candleholder (Pair)
128	_____	109 Azurite 7" Footed Covered Bowl
129	_____	8701 Crystal Decalware 8701 Tumblers (3) on 623 Satin Finish Tray
130	_____	239 Aurora 11 ½" Flat Rim Bowl, 16 Panel Optic, Etch 704 (scratched)
131	_____	274 Peach-blo 10" Vase, Etch 724 Betty, D100 Border Gold Trim
132	_____	2354 Light Emerald 10" Vase, Etch Early Wildflower
133	_____	3130 Crystal Bell, Etch Portia
134	_____	6004 Amethyst 6" Footed Vase
135	_____	Crystal Cambridge Oval Display Sign
136	_____	92 Moonlight Blue Caprice Individual Salt and Pepper (Pair)
137	_____	870 Amethyst Decagon 11" Center-Handled Sandwich Tray
138	_____	597 Amethyst Decagon 8 1/8" Plates(4), signed (4)
139	_____	979 Amethyst Decagon Cream and Sugar (Pair), signed
140	_____	1044 Ebony 10" Swan (Style 1), Signed
141	_____	W96 Milk 6½" Swan, Style 3
142	_____	1 Mulberry Keg Set (chip on stopper, 1 Tumbler cracked)
143	_____	3400/647 La Rosa 2-Light Keyhole Candle Sticks (pair)
144	_____	1066 Royal Blue Oval Cigarette Holded w. Ash Tray Foot
145	_____	1066 Amber Oval Cigarette Holded w. Ash Tray Foot
146	_____	3130 Carmen 5 oz. Ftd. Tumblers, Etch Rosalie (2)
147	_____	198 Ivory 1 ½ oz. Cologne (dauber broken)
148	_____	103 Peach-blo Stratford Oval 2 Handled Salt, Signed
149	_____	Azurite Spittoon Style Vase (some dirt in glass)
150	_____	2647 Crystal Nearcut Lotus Half Gallon Jug
151	_____	3500 Carmen 7 oz. Low Sherbets (6)
152	_____	1115 Light Emerald 10 ½" Bashful Charlotte Flower Figure
153	_____	518 Crystal 8 ½" Draped Lady Flower Figure

154	_____	W87 Milk 10" Urn and Cover, 2nd style
155	_____	249 Moonlight Blue Caprice 3 1/2" Vase, Blown
156	_____	300 Crystal Caprice 12 oz. Ice Teas (1 nick) (8) Lot
157	_____	3400/38 Carmen 80 oz. Ball Jug (scratches)
158	_____	52 Carmen Mt. Vernon 40 oz. Decanter and (6) #22 - 3 oz. Ftd Tumblers (set)
159	_____	3400/38 Crystal Ball Jug, 80 oz., Etch Apple Blossom
160	_____	3400/3121 Crystal Goblets, Etch Apple Blossom - Set of 6
161	_____	SS11 Crown Tuscan Nude Sea Shell 7" Comport
162	_____	1242 Crystal 12" Vase, RCE Maryland 985
163	_____	1458 Crystal 7 1/2" 3-Lite Candelabrum with 3 #19 Bobeches & 24 #1 - 2 1/2" Prisms
164	_____	3400/92 Amethyst 2 1/2 oz. Tumblers (6)
165	_____	870 Amber Decagon 11" Keyhole Sandwich Tray, Etch Lorna, Gold Trim
166	_____	500/14 Light Emerald 10" Bowl, Honeycomb Optic, Signed
167	_____	SS44 Crown Tuscan Sea Shell 6" Flower Center
168	_____	1337 Amber Cigarette Holders, (1) Ashtray Foot, and (1) Non-Ashtray Foot <b>CHOICE</b>
169	_____	3400/116 Forest Green, Crystal Handle 14 oz. Mugs (3)
170	_____	1066 Amber 11 oz. Goblets (2)
171	_____	3011 Carmen Statuesque 7" Cupped Comport, Crystal Stem & Foot
172	_____	1457 Crystal Epergne with (2) #19 bobèche, (16) #1 prisms, (1) # 1438 arm & (2) #2355 vases
173	_____	3060 Crystal 3 oz. Footed Tumbler, Blue Enamel Encrusted Willow, Gold Rims on Foot and Lip
174	_____	497 Crystal Cup, Blue Enamel Encrusted Willow, gold rim on cup (1)
175	_____	3400/38 Peach-blo 12 oz. Tumbler, Etch Gloria
176	_____	3121 Crystal 2 1/2 oz. Wine, Gold Encrusted Rose Point
177	_____	3122 Peach-blo 3 oz. Cocktail, Etch Gloria, Crystal Stem & Foot
178	_____	1917/256 Ivory Plainware Mayonnaise, Willow Etch on Rim & Bowl
179	_____	2631 Crystal Nearcut Marjorie Napkin Ring
180	_____	3500/94 Crystal 6" 2-Holder Ram's Head Candelabrum, Version 1, (Pair), small chip on candlecup
181	_____	107/1630 Crystal Beverage Set: #107 - 76 oz. Jug & #1630 - 12 oz. Tumblers (6), Etch Chrysanthemum
182	_____	1496 Crystal Cheese Comport, Etch Rose Point
183	_____	unknown Amber Covered Candy, Honeycomb Optic
184	_____	W71 Milk Mt. Vernon 40 oz. Decanter
185	_____	3400/32 Royal Blue 2 1/2 oz. Tumblers (6)
186	_____	628 Amber 3 1/2" Candlesticks, Etch Betty, Gold Trim, (Pair)
187	_____	3500/114 Royal Blue/Crystal 7-Piece Cordial Set {#3500/114 - Cordial Tray, #1341 - 1 oz. Royal Blue Cordial Tumblers (6)}
188	_____	3400/103 Crown Tuscan 6 1/2" Globe Vase, Etch Rosepoint, Gold Encrusted
189	_____	3104 Gold Krystal 5oz. Tall Hock, Crystal Stem/Foot (1)
190	_____	86 Madeira 8" Footed Vase, Etch Betty/Rosalie <b>UNUSUAL</b>
191	_____	3011/9 Amythest Bowl Statuesque 3 oz Cocktail, Crown Tuscan Stem/Foot
192	_____	3011/7 Crystal Statuesque 4 1/2 oz. Claret, Optic Bowl, Satin Finish Stem (1)
193	_____	3011/3 Forest Green Statuesque 7 oz Champagne, Satin Finish Stem
194	_____	#2 Amber 4 pieces Nite Set 1 each Tray, Tumbler, Pitcher w/lid, Gray Cut Floral
195	_____	1273 Ivory 9 1/2" Candlesticks Base Decorated Gold /BlackEnamel Edges Gold Decoration, Factory Label on Bottom (pair)
196	_____	101 Crystal Satin Decalware 6 oz. Syrup & Underplate
197	_____	109 Crystal Stratford 9 1/2" Dolphin Candlesticks (Pair)
198	_____	17 Forest Green Everglade 13" 3 Footed Bowl
199	_____	1402/80 Crystal 6 1/2" Tally-Ho Candlestick (Version 1), Etch Valencia, Gold Edge
200	_____	613 Light Emerald Decagon 1 1/2" Salt
201	_____	611 Madeira, Light Emerald Decagon 2 1/2" nutcup (2), <b>CHOICE</b>
202	_____	705 Golden Rod or Golden Showers Dappen Cup
203	_____	Crystal Set Doorknobs with Original Brass Fittings, unusual small size

204	_____	Crystal Set Doorknobs with Original Brass Fittings, large size
205	_____	3105 Crystal Pressed Rose Point Sherbet
206	_____	3104 Royal Blue 4 oz. Hoch Glass
207	_____	8 Ebony 6½” Fitter, 9” Across Base or Foot for Bowl, Gold Trim
208	_____	885 Crystal Male Urinal, Handled
209	_____	200/34 Turquoise 9 ½” Crucifix Candlestick, <b>RARE</b>
210	_____	Crystal Nearcut 6 pc. Child’s Tableset, Signed
211	_____	3035 Gold Krystol 1 oz Cordial, Optic, Colored Bowl, Stem, & Foot
212	_____	3035 Amethyst, Crystal 1 oz Cordial
213	_____	3126 Amber 1 oz. Cordial w. Crystal Stem and Foot
214	_____	3130 Crystal 1 oz. Cordial Etch Gloria
215	_____	3116 Crystal 1 oz. Cordial RCE Lucia
216	_____	3120 Gold Krystol 1 oz. Cordial w/ Crystal Stem and Foot
217	_____	1066 Royal Blue 1 oz. Cordial w/ Crystal Stem and Foot
218	_____	3779 Crystal 1 oz. Cordial Etch Chantilly
219	_____	3500 Crystal 1 oz. Cordial, Etch Rose Point, Gold Trim
220	_____	3121 Gold Krystol 1 oz. Cordial, Crystal Stem and Foot
221	_____	300 Royal Blue 1 oz. Pousse Café
222	_____	3011/13 Odd Green Statuesque 1 oz. Brandy, Crystal Stem and Foot
223	_____	Crystal Lot of Crystal 1-oz. Cordials: One each of 1936 Pristine, 3116, 3625, 3675, 3400/1341 Mushroom (LOT)
224	_____	3103 Carmen Pousse Café
225	_____	3130 Crystal 1 oz. Cordial, Etch Apple Blossom
226	_____	3075 Amber 1 oz. Cordial
227	_____	3776 Crystal 1 oz. Cordial, Cut Maryland
228	_____	3130 Light Emerald 1 oz. Cordial, All Lt. Emerald
229	_____	3778 Crystal 1 oz. Cordial, Cut Larchmont
230	_____	7966 Crystal 1 oz. Cordial, Cut Leaf
231	_____	Milk Farberware 1 oz. Cordial
232	_____	1327 Forest Green, Moonlight, Gold Krystol, Amethyst 1 oz. Cordials (4) <b>CHOICE</b>
233	_____	3035 Crystal 1 oz. Cordial, Etch Portia
234	_____	1327 Crystal 1 oz. Cordial, Etch Chantilly
235	_____	3105 Royal Blue Pressed Rose Point 5 oz. Footed Tumbler
236	_____	3105 Carmen Pressed Rose Point Cocktail
237	_____	3105 Amber Pressed Rose Point Claret Wine
238	_____	1402/100 Carmen Tally-Ho 1 oz. Cordial
239	_____	3400/10 Crystal 11” Center Handle Server, Etch Apple Blossom
240	_____	3400/28 Crystal 7” Comport, Etch Apple Blossom
241	_____	3400/141 Carmen 80 oz. Jug
242	_____	3400/115 Carmen 13 oz. Tumbler (6)( 1 Nick, slight stain) (LOT)
243	_____	P253 Crystal Individual Cream & Sugar, Etch Rose Point
244	_____	10 Willow Blue 4” Everglade Candlesticks (pair)
245	_____	53 La Rosa 10 ½” Caprice Crimped Bowl
246	_____	7 Willow Blue 11” Everglade Ftd. Bowl
247	_____	3400/10 Gold Krystol 11” Handled Sandwich Tray, Etch Apple Blossom, Gold Encrusted
248	_____	3400/4 Peach-blo 12” 4-Ftd. Bowl, Etch Portia (roughness on foot)
249	_____	1236 Ebony 7 ¾” Keyhole Ivy Ball
250	_____	3011/1 Crystal Statuesque 11 oz. Banquet Goblet
251	_____	62 Azurite 7 ¼” Tall Comport, Enamel & Gold (non Cambridge décor.)
252	_____	W112 Milk Sea Shell Cream & Sugar
253	_____	3500/57 Amber 3-part Candy, Etch Wildflower, Gold Encrusted, <b>UNUSUAL</b>
254	_____	647 Amber 2-Lite Keyhole Candlestick, Etch Wildflower, Gold Encrusted
255	_____	3400/160 Crystal 12 “ 4 Toed Oblong Bowl, Etch Wildflower, Gold Encrusted (beautiful gold)



256	_____	674 Crystal Satin 12" Roundware Bowl, Decal Ware
257	_____	135 Crystal Satin 10" Cheese/Cracker, Decal Ware
258	_____	138 Crystal Satin Round Cream & Sugar, Decal Ware
259	_____	910 Peach-blo 8 ½" Oval Covered Bowl, Etch Cleo
260	_____	512 Peach-blo Satin Rose Lady Flower Figure
261	_____	512 Peach-blo Rose Lady Flower Figure
262	_____	509 Peach-blo 2 Kid Flower Figure
263	_____	3011/9 Carmen Statuesque 3 oz. Cocktails (2)
264	_____	3011 Carmen Statuesque Ashtray
265	_____	9 Carmen Mt. Vernon Candy Urn and Cover
266	_____	663 Crystal Epergne Includes: 1307 - 5" short stem 3-lite Candlestick, 1438 2-vase Arm and 2 2355 - 8" Vases (Crystal)
267	_____	156 Crystal Oyster Plate
268	_____	680 Peach-blo Dresser Compact and Cover, Etch Early Wildflower
269	_____	1402/139 Royal Blue 10" Tally-Ho Hat
270	_____	1542 Crystal Lifesaver 20 oz. decanter, stopper bottom AS IS
271	_____	Crystal 22 oz. Dog Bottle, Painted features
272	_____	Cambridge Glass Company Cafeteria Coin/Token
273	_____	#10 Cambridge Nearcut Catalog, (1st few pages missing)
274	_____	#57 Amber Everglades 15 " 3 toed Sandwich Plate
275	_____	#577 Moonlight Blue 8" Horn of Plenty
276	_____	#70 Moonlight Blue Caprice 7" Candlesticks with Prisms (prisms not correct) , (Pair)
277	_____	2800/235 Azurite Community 3 ¾" Pin Tray, Signed
278	_____	1261 Crystal Oil and Vinegar, Etch #731 Roselie
279	_____	1261 Crystal French Dressing Bottle, Etch Chantilly, Sterling Foot and Stopper Decoration, Marked Sterling weighted 451
280	_____	3400/98 Royal Blue Ball Jug Creamer and Sugar (Pair)
281	_____	Turquoise "Queen" Salt. Pepper, Tray Set
282	_____	200/15 Ebony Candlesticks, Gold Decorated Seaweed and Irridized (Pair)
283	_____	8 Willow Blue Everglade 12" 3-footed Bowl
284	_____	607 Ebony Cigarette Box/Cover with Dog Figure in Intaglio
285	_____	274 Peach-blo 10" Vase, Etch Chrysanthemum
286	_____	132 Azurite Large (3"x6") Cigarette Box/Ash Tray Lid
287	_____	14 Pomona Refectory Bowl, 4-Toed
288	_____	8 Amber Everglade 12" 3 Footed Bowl
289	_____	1155 Crystal Everglade 3-Ftd. Candlesticks, (Pair)
290	_____	3400/92 1070 Amber 7-Piece Decanter Set {#3400/92 Cordial Decanter & #1070 Pinch Tumblers (6)}
291	_____	14/366 Jade Console Set: #14 - 10" Bowl & #366 - 8" Twist Candlesticks (Pair)
292	_____	47 Ivory 6" Mayonaise
293	_____	SS9 Crown Tuscan Sea Shell 13" Salad Bowl
294	_____	1237 Amethyst 9" Ftd. Vase
295	_____	O656 Crystal Sheffield 8" Vase, Sterling Base, Etch Chantilly, (Pair)
296	_____	1612/1614 Crystal 16" Hurricane Lamp, Etch Rose Point
297	_____	3011/25 Carmen Statuesque 9½" Ivyball, Satin Stem
298	_____	SS11 Mandarin Gold Seashell Nude 7" Comport
299	_____	3011/12 Royal Blue Statuesque 3 oz. Wine
300	_____	3400 Ebony 1174 B&B Plates (4) and 1176 Salad Plate (1) (Lot)
301	_____	487 Crystal Oval Cheese and Crackers Underplate (only), Etch Blue Willow with Blue Enamel (gold trim wear)
302	_____	40/239 Mulberry 9 ¼" Panel Bowl (signed) and 7 ½" Twist Candlesticks (Pair) (Set), Fire Polished, Chip Under 1 Cup
303	_____	3900/126 Crystal 12" 3-Compt. 2-Hld. Celery & Relish, RCE Maryland 985
304	_____	3400/4 647 Crystal 2-Lite Candlesticks & Bowl, D1036, Frosted Apple Blossom Silk Screen (Set) Trim Wear

305	_____	1307 Crystal 5" 3-Lite Short Stem Candlesticks (4)
306	_____	993 Amber 12 ½" Bowl, slight scratches
307	_____	1917/361 Azurite 10" Hld. Sandwich Tray, Version 1, D610 Gold Band Overlay (minor gold wear)
308	_____	1917/361 Light Emerald 10" Sandwich Center Handle Tray, Decalware Decoration, <b>UNUSUAL</b>
309	_____	Topaz Top Hat Ashtray
310	_____	307 Mandarin Gold 3" Crimped Vase
311	_____	W120 Milk Dresden Lady Figure
312	_____	1217 Crystal 4 oz. Bitter Bottle with Chrome Tube, 3400 rays, Engraved Lucia
313	_____	P.422 Crystal 4" Footed Ivy Ball
314	_____	3900/114 Crystal 32 oz. Martini Jug, Silver Foot, Etch Chantilly, with Glass Stirrer
315	_____	3500/78 Crystal 6" Rams Head Candy Box and Cover, Etch Rose Point
316	_____	3500/121 Crystal 4 ½" Candy Box and Cover, Etch Elaine
317	_____	1956/2/3/4 Crystal 5-piece Floral Centerpiece with Foil Labels
318	_____	3011/7 Heatherbloom Statuesque 4 oz. Claret
319	_____	3011/9 Carmen Statuesque 3 oz. Cocktail, Satin Stem and Foot
320	_____	3011 Royal Blue Statuesque Ashtray
321	_____	3011 Gold Krystol Statuesque 3 oz. Cocktail, Satin Stem and Foot
322	_____	646 Heatherbloom Decagon 5" Candlesticks, Etch Gloria (Pair)
323	_____	3400-92 Amber 32 oz. Decanter, Silver Overlay Tavern Scene and Round Glass Stopper - Amber 2 ½ oz. Tumblers, Silver Overlay "Just a Swallow" (4) (Set)
324	_____	1612/1614 Crystal 16" Hurricane Lamps, RC Eng. Manor (1003), (Pair)
325	_____	#14 Windsor Blue Sea Shell 9" Comport, Signed
326	_____	109 Light Emerald Dolphin Stratford Candlesticks, Acid Sponged, Gold Cups (Pair)
327	_____	3500/42 Crown Tuscan Urn Made into Lamp - 13" High Gold Trim, Scrubbed off Cambridge Glass
328	_____	3400/1200 Gold Krystol 12" Oval 4-Toed Bowl, with 3400/638 Keyhole 3-Lite candlesticks with Decagon Foot (2), Etch Apple Blossom
329	_____	1269 Crystal Martha Washington 9 ½" Candlesticks with Locking Bobeches - Lustre Cut Prisms (No. 2) (Pair)
330	_____	SS32 Windsor Blue Sea shell Ash Tray/Cigarette Snuffer (or small candle) (3)
331	_____	554 Ivory 6 ½" Round Plate, Etch Willow, Blue Enamel Encrusted, Gold Trim (3)
332	_____	963 Light Emerald 4 Part Square Relish, Etch Cleo
333	_____	151 Crystal Satin Decalware 11" Dinner Plate (1) Satin Finish
334	_____	17 Pomona 10 ½" Round Plate
335	_____	14 Bluebell 10" Cupped in Bowl, Etch 704
336	_____	463 Amber 12" Hld Dolphin Bowl
337	_____	2760 Crystal Nearcut Daisy 9" Candlestick, Cut Stem
338	_____	2368 Azurite 10" Vase
339	_____	437 Amber 9 ½" Candlesticks Gold Encrusted, Etch #524 Betty Decoration
340	_____	275 Azurite 12" Vase, Ruffled Top
341	_____	1297 Crown Tuscan 11" Footed Vase, Etch Portia Gold Encrusted (Black Crown Tuscan Stamp)
342	_____	3011/9 Royal Blue Statuesque 3 oz. Cocktail
343	_____	3011/3 Carmen Statuesque Champagne
344	_____	3011 Royal Blue Statuesque 7" Cupped Comport
345	_____	3797 Crystal Cambridge Square Cigarette Holder, Gold Encrusted Cigarette
346	_____	3400/119 Amethyst 12 oz. Ball Decanter, (2) Amethyst 3400/92 2 oz. Tumblers (Labels on all) (SET)
347	_____	394 Crystal 10" 5-compartment Celery/Relish, Etch Rose Point
348	_____	1528 Crystal 10" Vase, Etch Rose Point
349	_____	671/Pristine Crystal Ice Tub (no tongs), Etch Rose Point
350	_____	3126 Royal Blue Bowl 10 oz. Goblet
351	_____	W111 Milk 5" Bon Bon
352	_____	3400/3 Amber 11" Low Footed Bowl, Etch Apple Blossom
353	_____	76 Azurite 10" Vase, 529 Egypt w. Green Enamel
354	_____	119 Forest Green 7" Handled Basket (handle is crystal)
355	_____	3011 Pistachio Statuesque (short) 7" Cupped Comport (crizzled)

356	_____	315 Light Emerald 28 oz. Decanter w. Stopper, Silver Overlay
357	_____	1123 Crystal Dresden Lady Figure
358	_____	80 Azurite 10" Vase D610 Gold Band Overlay
359	_____	1309 Crown Tuscan 6"Globe Vase, Etch Portia Gold Encrusted (Black Crown Tuscan Stamp)
360	_____	225 Ivory Ball Stem 9 3/8" Candlesticks (Pair)
361	_____	2837 Crystal Nearcut Peacock Jug Satin Finished Highlights
362	_____	SS50 Crown Tuscan 8" Dolphin Square Base Candlesticks (Pair)
363	_____	1569 Crystal 5 Lite Candleabrum, #1357 with 1573 Arm, #19 Bobeche and(8) #7 Prisims
364	_____	2351 Crystal Nearcut 10 1/2" Punch Bowl & Base
365	_____	2696 Crystal Nearcut Wheat Sheaf Cracker Jar & Cover, 2 Handled
366	_____	2660/215 Crystal Nearcut Wheat Sheaf Quart Jug
367	_____	2626 Crystal Nearcut Radium 8" Bowl, Rosebowl shape <b>UNUSUAL</b>
368	_____	2670 Crystal Nearcut 9 1/2" Deep Bowl, Signed
369	_____	2589 Crystal Pineapple 3 Sided Novelty (from tumbler) <b>UNUSUAL</b>
370	_____	215 Crystal Wheat Sheaf Milk Pitcher
371	_____	2760 Crystal Nearcut Archfoot Variant Creamer, with Unusual Flowers
372	_____	Ebony/Carmen 4 piece Game Set (Heart/Spade/Diamond/Club Foot)
373	_____	2750 Mulberry Colonial, Fan Vase/ Lily Form
374	_____	119 Royal Blue 10" Basket, with Royal Handle
375	_____	107 Mulberry SweetMeat, Silver Lily-of-the-valley Decoration
376	_____	552 Crown Tuscan 7 " Plate with Charleton Gardenia, Trim Wear
377	_____	235 Topaz 9 1/2" Bowl
378	_____	1704 Pistachio 5" Tophat
379	_____	3 Carmen, Tahoe and Mulberry (3) Tuxedo 2 1/2 oz Cocktails, clear with colored foot
380	_____	278 Crystal 11" vase, Decorated Gold Woodlily, Rim Repair Under Gold
381	_____	W106 Milk 6" Comport with Gold decoration and Charleton Roses, Trim Wear
382	_____	3400/90 Crystal 6 " 2-Part Relish, Etch Wildflower Gold Encrusted
383	_____	3900/34 Crystal 11" 2-Handled Bowl, Etch Wildflower
384	_____	3400/34 Crystal 10" 2-Handled Bowl,and 3400/647 2-Lite Candlesticks (Pair), Etch Wildflower
385	_____	3400/1185 Crystal 10" 2-Handled Bowl, Etch Wildflower
386	_____	3400/1182 Crystal 13 1/2" Cake Plate, Etch Wildflower
387	_____	5778 Royal Blue Farber Preserve Dish w/ #3500/129 Insert, Spoon
388	_____	3500/114 Crystal 7-Piece Cordial Set {#3500/114 - Cordial Tray, #1341 - 1 oz. Cordial Tumblers (6)}
389	_____	3500/67 Crystal 12" 6-Piece Relish Set, Etch Elaine
390	_____	3500/59 Crystal 2-Piece Mayonaise Set, Etch Elaine
391	_____	1043 Mandarin Gold 8 1/2" Swan, Type 3
392	_____	3400/119/1341 Forest Green 9-Piece Cordial Set {#3400/119 Cordial Decanter & #1341 Cordials (8)}
393	_____	Cambridge Arms Crystal #628 Candlestick, #1563 - 4-Candle Arm, #1536 - Nappy (3), #1562 - 3-Vase Arm, #2355 - 8" Vase (3), 1633 - Peg Vase
394	_____	47 Primrose 6" Mayonaise
395	_____	847 Amber Decagon Ice Pail, Metal Handle, Signed
396	_____	1617 Crystal 4" Martha Candlesticks for Hurricane (from #3600/494) (4)
397	_____	647 Crystal 6" 2-Lite Keyhole Candlesticks, Etch Roselyn, (Pair)
398	_____	992 Light Emerald 12 3/4" 4-Ftd. Bowl, Rolled Edge, Etched #739, Scratched
399	_____	680 Crystal Compact & Cover
400	_____	3126 Amethyst 10 oz. Goblets (4)
401	_____	130 Crystal Arcadia 7" 2-Hld. Bonbon
402	_____	318 Crystal Jenny Lind Fan/Basket Shaped Vase
403	_____	3121 Crystal 10 oz. Footed Tumblers, Etch Rose Point (6)
404	_____	3121 Crystal 5 oz. Footed Tumbler, Etch Rose Point (5)
405	_____	7390 Crystal 5 oz. Café Parfaits, Etch Adams (6)

# Zoom & Tell: Aurora, Night Blue, Bluebell & Ritz Blue

by David Ray

The October Zoom & Tell program focused on the transparent shades of blue glassware produced during the 1920's. Over a 5-year period, four similar shades of blue glassware were produced by Cambridge: Aurora (1924), Night Blue (1925), Bluebell (1926) and Ritz Blue (1929). Most collectors can distinguish Bluebell, but the other three colors, Aurora, Night Blue and Ritz Blue, can be confusing for collectors to identify.

Larry Everett, David Rankin and Frank Wollenhaupt led the program and offered suggestions for helping collectors distinguish between the different shades of blue. One of the most helpful tips compared the glow under a black light. Aurora has a significant glow (magnesium), Night Blue has minimal glow and Ritz Blue does not glow. If you own a black light, then using the glow test could be a helpful tool in distinguishing between the three different colors. We know Cambridge modified its glass formulas depending on the raw materials available at the time, so using a black light may not be full proof for determining a specific color, but it does give collectors a starting point. The thickness of the glass often impacts the intensity of its color. During the show and tell portion of the program, a guest shared two #1 Keg sets. One of the sets strongly glowed under

a black light and the other did not. Either the keg set was produced in two different colors or the formula was changed due to the raw materials available at the time. There was no obvious color difference in the two sets. The following photographs are our best guess of the names of the blue colored glass of the 1920's.

Over time, it is obvious Cambridge was looking to create a richer and more vibrant shade of blue glass. Bluebell was very popular and was produced for a few years in the 1920's and then returned in the 1940's under the name Tahoe Blue. The richness of Ritz Blue was only surpassed by Royal Blue in 1931.

If you missed this very informative Zoom & Tell program, contact Freeman Moore at [membership@cambridgeglass.org](mailto:membership@cambridgeglass.org) for a link to the video. The Zoom team hopes you can join us as we continue the monthly Zoom & Tell programs in 2023. The first set of topics are:

- January: Figural Flower Frogs
- February: Charleton Decorated Glass
- March: Statuesque (Nude) stems

Happy collecting! ■

## Aurora



## Night Blue



## Bluebell



## Ritz Blue





Welcome to the eBay Report, featuring Cambridge glass items that sold on eBay circa mid- October through mid-December 2022. Selling prices are rounded to the nearest dollar. If no color is mentioned, assume that the piece or part of it being discussed is crystal. If I refer to an auction as “incognito,” that means that the seller did not know he or she was offering Cambridge glass, and didn’t use the word “Cambridge” in the description. I also mention if a listing was a Buy It Now offering, as opposed to an auction style listing. I think it’s important to distinguish between the two, as the price for an auctioned item reflects competitive bidding (or no competition, if it sells for the opening bid.) This month I have two new first-time categories! Here we go:

### Statuesque (Nude Stem) and Related Items

A comport with cupped bowl in Smoke sold for \$96.



A cocktail with Forest Green bowl and satinized stem sold for \$99 Buy It Now.

A seller offered 3 rare v-shaped cocktails with Amethyst bowl for \$395 each. As of this writing, 2 of the 3 have sold at that price.



A comport with shell top in solid Forest Green sold for \$500 Buy It Now. The seller did not give any measurements, but it appears to be the tall version of this piece.

A seller offered a set of 6 table goblets with Forest Green bowl at \$950.



### Rubina



A low comport that was 4-3/4 inches high and 7-1/4 inches in diameter with a flat rim and the usual honeycomb optic sold for \$50. It had very nice coloration, with all 4 colors present.

A low comport that was 4 inches high and 6-1/2 inches in diameter with honeycomb optic, sold for \$54. It had nice coloration, but not much in the blue range. This one was similar to the one above, but shallower.

A sweet pea vase 4 inches high and 6-1/2 inches across the top, with really nice coloration -- all 4 shades! -- sold for \$108. It had a lot of bubbles in the glass, or it



might have brought more.

A slender 8-3/4 inch footed covered candy with honeycomb optic showing an exemplary range of color, including a good swath of the often-missing blue shade, sold for \$110 Buy It Now. The same piece with little to no blue shading sold for \$130 back in late September.



An 8-1/2 inch tall covered candy with a cupped-in top rim and honeycomb optic, with a nice enough color range, sold for \$161. This was the wider one that is shaped more like a comport.



### Marjorie etching

A set of 3 #7606 5-1/2 ounce parfaits brought \$45.



A #1263 French dressing bottle also etched “Oil” and “Vinegar” sold for \$81, which I thought was a steal. Is it just me, or does this piece turn up more often in colors than it does Crystal?

A set of 4 3 ounce whiskeys sold for the \$100 opening bid.



A set of 7 “long stem” 5 inch cocktails sold for the \$125 opening bid.



A #315 28 ounce decanter with cut and polished panels on the neck, but missing its stopper, sold for \$167 Buy It Now.

Several small-capacity Marjorie stems were listed, but... y’know... “This listing was ended by the seller because the item is no longer available.” They were described as a brandy, a pousse café, and a cordial, but I’m not sure they were correctly identified.

### Gold, Silver and Enamel Decorations

One seller offered two Canape Sets identified as Cambridge #693/3000. The first one had an etched Rooster decoration



that was gold encrusted. It sold for \$60. The second one had a hunt scene encrusted with red enamel and gold trim (not “the” Hunt



etching that adorns a large line of tableware.) It sold for \$75. I am not convinced that either set was Cambridge. Readers?



A pair of #200/1 10 inch candlesticks in Helio with a gold encrusted border etching on the square foot was offered for \$75 but sold for an undisclosed Best Offer.

A #3400/92 tilted ball decanter and 6 matching whiskey tumblers with a white and red enamel ring decoration sold for \$130.



A #1321 decanter and 2 #7966 2 ounce sherries in Carmen (crystal stopper and feet) with a Rockwell silver overlay in a grapes and leaves pattern was offered for \$150, and sold for an undisclosed Best Offer. Some silver loss was noted.



A #851 ice pail with tongs and enamel decoration #987 Scotty sold for the \$175 opening bid, as did the #1322 26 ounce decanter with the same decoration, offered by the same seller.

#### Etched Tableware & Stemware



A #18 12 inch optic footed vase in Amber etched #724 and with a gold encrusted band etching at the top sold for the opening bid of \$19 in an incognito listing.

A #3400/71 3 inch 4 toed individual nut cup in Heatherbloom sold for the opening bid of \$25.

A #1535 3-light candlestick etched Chantilly on the base and on the matching 2-notch locking bobèche sold for the \$40 opening bid.

A #584 Pristine 9-1/2 inch vase etched Firenze sold for \$45.



A set of 5 #3111 wines etched Candlelight sold for a mere \$50.

A set of 8 #3135 water goblets in PeachBlo etched Gloria sold for \$84 in an incognito auction.

A #119 basket with Elaine etching sold for the \$299 opening bid.



A #3500/57 Gadroon 3 part covered candy etched Candlelight brought \$120 Buy It Now.



#### Miscellaneous

An Ebony Tally Ho Ebony ice bucket with bail set in a Farber Brothers chrome base sold for \$113.



A pair of #225 9 inch candlesticks in Helio sold for \$125 Buy It now.

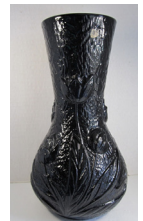


A #1312 footed cigarette box with Heatherbloom box portion and a crystal lid (probably a replacement for a lost or broken Heatherbloom lid) wafted around eBay for a long time, finally selling for \$170 Buy It Now.



The pegged plate portion of a #31 Caprice 2-piece cake server in Moonlight Blue sold for \$187.

A #1253 Everglades 12 inch vase in Ebony (the one with the Tulips in heavy relief) with a partial Cambridge original label sold for \$265. I was surprised to see this vase with a rather straight-sided top, rather than a flared rim.



An 8-1/2 inch Draped Lady flower arranger in Crown Tuscan sold for \$502. Though in good condition, the color was somewhat “burned” in appearance, compared to most Crown Tuscan items.



Finally, the “wide” style samovar in Light Emerald, with 4 blown punch cups in silverplated holders, sold for an astounding \$2,550 Buy It Now. It appeared to have been resilvered, because honestly, I’ve never seen one that looked SO good. However, the price stuns me, considering that it had NO ETCHED DECORATION. I also have my suspicions that the glass might have been blown at Paden City, rather than at Cambridge, because there is just something about the green color that says, “not quite Light Emerald” to me.



That’s it for now. If you see any interesting Cambridge glass on eBay that you think I should be watching or reporting on, or if you have any other input, feel free to contact me at [LAGlass@pacbell.net](mailto:LAGlass@pacbell.net). I am well aware that I don’t catch every interesting listing, and now that eBay no longer has a category devoted to Cambridge glass, I will especially need your help.

Until next time, happy Cambridge hunting!

## Membership Corner

The NCC Board of Directors relies on the five operational vice-presidents to oversee most of the work of NCC. A primary function of this committee is to support membership retention and new member recruitment.

We'll update you about new programs that we will be implementing in the future.

If you are interested in serving on this committee, please contact Elaine Thompson at [elainethompson@roadrunner.com](mailto:elainethompson@roadrunner.com)



Thought you might enjoy a picture of the Michigan State Regent, Daughters of the American Revolution, to whom my DAR Chapter gifted this Everglade #31 16" Tulip Platter at our recent luncheon. Kelly is a Dutch descendant. She loved it. I let her know it was an antique and was made by The Cambridge Glass Company.

Deb Mohatarem

## In Memoriam

NCC is saddened to learn of the passing of several members. We send our thoughts and prayers to the families.

Norma Kolb of Ohio, member #780 from 1977. She was preceded in death by her husband Willard Kolb, who served as President of NCC from 1980 to 1988, and was awarded Lifetime status in 2002.

Lynne E. Wormland of Michigan, member #2973 from 1982, passed away on October 31st, 2022. Her husband Donald preceded her in death in July.

Jim Hetherwick of Michigan, member #5605 from 1994, passed away in May, and is survived by his wife Kathy.

## New Members

Cynthia Cronkhite

WA

## Volunteer Opportunity

We currently have a volunteer opportunity to help us with communications.

We could use help in several areas. Perhaps an easy task that can be done remotely is the sending of the monthly emails about the Zoom and Tell meetings. We could also use help with writing and distributing informational releases to other publications. As we improve our websites, we need someone to be looking for information that should be posted on our websites. Perhaps this could be a position for someone wanting to try a new experience. We'll help you as much as possible, and make it easy for you to do remotely.

If interested, please contact Freeman Moore for more information.

[president@cambridgeglass.org](mailto:president@cambridgeglass.org)



Recruit  
and  
Retain

Give this page to a friend



The National Cambridge Collectors  
P.O. Box 416 ~ Cambridge, Ohio 43725

“FRIENDS OF CAMBRIDGE” MEMBERSHIP

The National Cambridge Collectors, Inc. (NCC) is a non-profit organization dedicated to the education and preservation of the great work of the Cambridge Glass Company. Founded in 1973, we depend on the financial support of our members, who we call **Friends of Cambridge**, for the majority of our operating budget. Won't you consider becoming a Friend of Cambridge? You can also complete this online at: <http://cambridgeglass.org/online/>

Friend #1 \_\_\_\_\_

Friend #2 \_\_\_\_\_

Friend #3 \_\_\_\_\_

(continue on reverse if needed - indicate any children and their year of birth, only those 18 and older residing in your household may vote)

Address \_\_\_\_\_

City/State/Zip \_\_\_\_\_

Email Address (required) \_\_\_\_\_

Phone Number \_\_\_\_\_

Crystal Ball newsletter delivery: \_\_\_ email (color) \_\_\_ paper (black & white)

Glass collecting interest: \_\_\_\_\_

New Member? (Y/N) \_\_\_ or Renewal? \_\_\_ If renewal, Member #s \_\_\_

*Levels of Membership*

Patron \$ 35

Century Level	\$ 100	Mardi Gras Level	\$ 200
Japonica Level	\$ 500	President's Circle	\$ 1,000

*All members receive the Crystal Ball, free Museum admission and 10% off any book/DVD purchases, President's Circle includes Convention registration for two members in the household and one free copy of any new NCC publication.*

All memberships are renewed annually via The Annual Fund mailing in late March/early April. All Annual Fund gift recognition levels are per household and include membership for everyone within the household 18 and older. Each household will receive a subscription to the Crystal Ball newsletter, unlimited admissions to the museum, and rights to vote in elections for the Board of Directors and discounts on NCC books. NCC is a 501(c)(3) organization and Annual Fund gifts are allowed as a tax deduction under Section 170 of the Internal Revenue Code. Contact your tax advisor for your individual situation.

Return this form with check or money order payable to NCC, Inc. at the above address.  
And always visit us at [www.cambridgeglass.org](http://www.cambridgeglass.org) to see what's new!



## NCC Events

\*\*\*\*\*

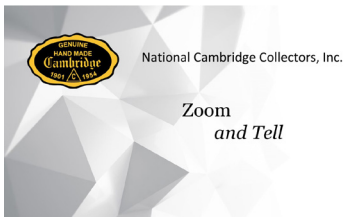
**March Meeting and Auction  
Friday March 17 and 18, 2023**

\*\*\*\*\*

**2023 NCC Convention  
June 22-24, 2023**

\*\*\*\*\*

**Fall Membership Meeting  
Friday October 21, 2023**



Contact [membership@cambridgeglass.org](mailto:membership@cambridgeglass.org) if you don't get the monthly email with the Zoom information.

January 17	Figural Flower Frogs
February 21	Charleton Decorations
March 14	Nude Stems
April 18	Silver Overlays
May 16	Smoking Items

## Member Benefit

Each NCC household is allowed one free 20-word classified ad in the Crystal Ball per calendar year as part of their membership. This can be a "For Sale" or "Wanted" type of classified ad. Submit your ad by email to [editor@cambridgeglass.org](mailto:editor@cambridgeglass.org)

## CLASSIFIEDS

**WANTED:** One Caprice 300 9 oz. Mocha goblet to replace one that I broke. 🙄  
[kklaviter@icloud.com](mailto:kklaviter@icloud.com)

### January 21-22, 2023

International Depression Glass Club  
Glass, China & Pottery Sale  
Scottish Rite Masonic Center  
6151 H Street  
Sacramento, CA 95819  
<http://www.idgc.org/glassshow.php>



### January 28-29, 2023

Collectors of Depression Glass-Jacksonville, Florida  
48th Annual Show & Sale  
Fraternal Order of Police Building  
5530 Beach Blvd  
Jacksonville, FL  
<http://www.depressionglassclubjax.com>

### February 4-5, 2023

South Florida Depression Glass Club's 49th  
Vintage American Glass and Pottery Show & Sale  
Tamarac Community Center  
8601 West Commercial Blvd  
Tamarac, FL 33321  
<http://www.sfdgc.com/>

### February 11-12, 2023

Clearwater Elegant & Depression Glass Show & Sale  
Morningside Recreation Complex  
2400 Harn Blvd.  
Clearwater, FL 33764  
[gingerbreadantiques77@gmail.com](mailto:gingerbreadantiques77@gmail.com)

### February 18-19, 2023

The Houston Glass Show & Sale  
plus The Best Little Antique Show in Texas  
Fort Bend County Fairgrounds  
Hwy 36 and Hwy 59  
Rosenberg, TX  
<http://www.maxmillerantiques.com>

### February 25, 2023

Green River Depression Era Glass Club  
45th Annual Green River Glass Show & Sale  
Kent Commons  
525 4th Avenue N  
Kent, WA  
[kayswede@msn.com](mailto:kayswede@msn.com)

### March 11-12, 2023

The 20-30-40 Glass Society of Illinois  
50th Annual Glass Show & Sale  
The Concord Plaza Midwest Conference Center  
401 West Lake St.  
Northlake, IL 60164  
<http://20-30-40glassociety.org/>

# DEALER DIRECTORY

Dealer Directory - \$24 for 12-months, size limited by box (see below). Includes listing on NCC website. Electronic submissions should be emailed to: [editor@cambridgeglass.org](mailto:editor@cambridgeglass.org)

## Advertising Rates:

1/8 page \$15      1/4 page \$20  
 1/2 page \$30      Full page \$50

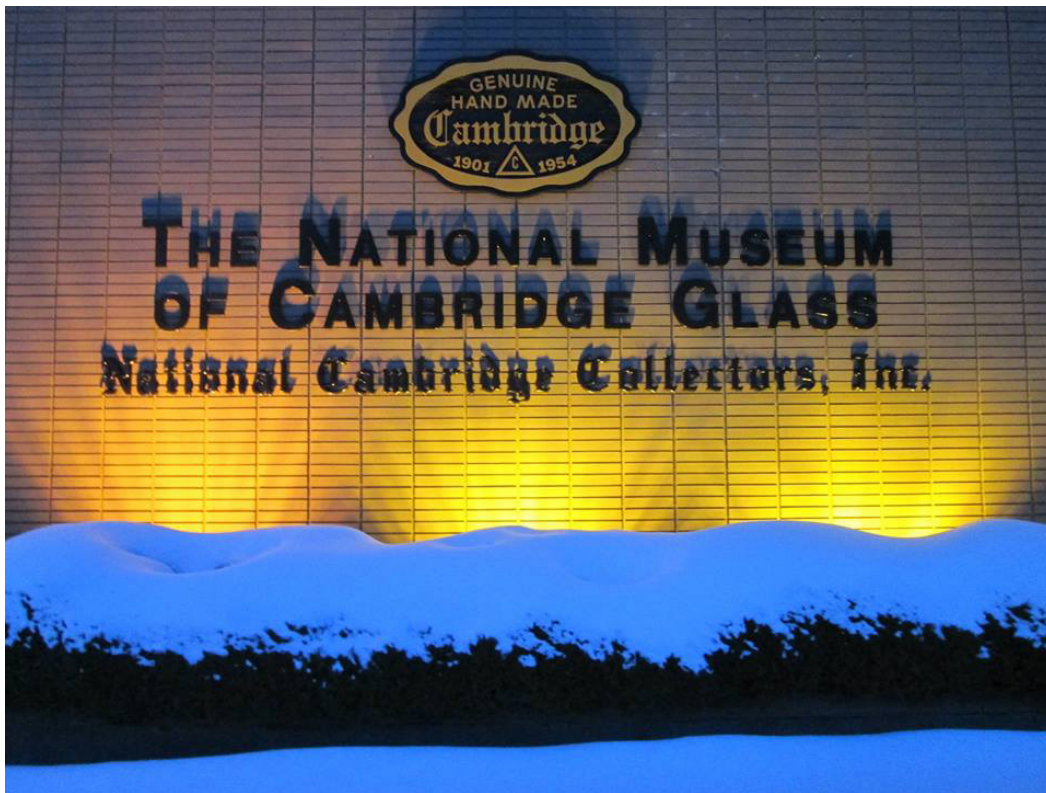
Mailed submissions and all payments should go to PO Box 416, Cambridge, OH 43725. Deadline is 10th of preceding month. Ads must be paid in advance. Show listings are FREE; send info to PO Box or e-mail address 60 days before event.

<p style="text-align: center;"><b>Max Miller</b>  <b>Elegant American Glassware</b>  <a href="http://www.maxmillerantiques.com">www.maxmillerantiques.com</a></p> <p>The Market Place              10910 Katy Freeway.      713-410-4780              Houston TX 77043      <a href="mailto:mmxglass@aol.com">mmxglass@aol.com</a></p>	<p style="text-align: center;"><b>ISAACS ANTIQUES</b>              (740) 826-4015</p> <p style="text-align: center;"><i>↔ located in ↔</i>  <b>Black Cat Vintage LLC.</b>  <b>637 Wheeling Ave.</b>  <b>Cambridge, OH 43725</b>  <b>(740) 995-8370</b></p>
<p style="text-align: center;"><b>Glen &amp; Carolyn Robinson</b>  <b>White Rose Antiques</b>  <b>Specializing in Depression Era Glassware</b></p> <p style="text-align: center;"><b>2454 McFarland Road</b>  <b>York, SC 29745</b></p> <p>803-684-5685  <a href="mailto:gandcrobinson@aol.com">gandcrobinson@aol.com</a>  <a href="http://whiteroseglassware.com">whiteroseglassware.com</a></p>	<p style="text-align: center;"><b>MARGARET LANE ANTIQUES</b></p> <p><b>2 E. Main St. New Concord, OH 43762</b>              Lynn Welker      (740) 705-1099</p> <p>Cambridge Glass Matching Service              Hours: Mon-Fri 10-12 AM, 1-5 PM              or by appointment</p>
<p style="text-align: center;"><b>CRYSTALLINE COLORS</b>  <i>Cambridge • Fostoria • Elegant Glass</i>              Booth and Showcases in the  <b>Medina Antique Mall</b>              Medina, OH (I-71, exit 218)</p> <p style="text-align: center;">Lynne R. Franks    216-661-7382</p>	<div style="background-color: #4b0082; color: white; padding: 5px; text-align: center; font-weight: bold;">                 Connecting Buyers &amp; Sellers!             </div> <div style="text-align: center;">  <p style="font-size: small;">Tell us what you are looking for and we help find it.</p> <div style="background-color: #4b0082; color: white; padding: 2px; text-align: center; font-weight: bold;"> <b>CAMBRIDGE GLASS.US</b> </div> <p style="font-size: small;">P. Snyder 740-601-6018</p> <div style="background-color: #4b0082; color: white; padding: 2px; text-align: center; font-weight: bold;"> <b>E-Mail and Find Your Glass!</b> </div> <p style="font-size: small;"> <a href="mailto:psnyder@cambridgeglass.us">psnyder@cambridgeglass.us</a>  <a href="http://www.cambridgeglass.us">www.cambridgeglass.us</a> </p> </div> <div style="font-size: x-small;"> <p><b>E-Blast</b></p> <p>When you are searching for Cambridge glass, email your request and it is emailed to all members and dealers.                  P. Snyder, 1500 Edgewood Dr., Circleville, Ohio 43113</p> </div>
<p style="text-align: center;"><b>CRYSTAL LADY</b></p> <p>1817 Vinton St.      Omaha, NE 68108  <b>Bill and Joann Hagerty</b>  <b>Marcie Hagerty Bergquist</b>              402-699-0422</p> <p>Specializing in Elegant Glass &amp; Collectibles  <a href="http://www.crystalladyantiques.com">www.crystalladyantiques.com</a></p>	<p style="font-style: italic; font-size: large;">Be sure to tell              dealers that you              saw their ad here.</p>





National Cambridge Collectors, Inc.  
PO Box 416  
Cambridge OH 43725  
email: [editor@cambridgeglass.org](mailto:editor@cambridgeglass.org)  
website: [www.cambridgeglass.org](http://www.cambridgeglass.org)



***The National Museum  
of Cambridge Glass***  
National Cambridge Collectors, Inc.

***Open April thru October  
only***

