



Cambridge Crystal Ball

Published by the National Cambridge Collectors, Inc. as a resource which informs, invites and inspires people to encourage the continued preservation of the glass produced by the Cambridge Glass Company of Cambridge, Ohio for future generations.

Issue No. 551

ISSN 2474-5987

September 2021

Reminder: NCC 2021 and 2022 Auction Schedule

It's Coming!

The 2020 Auction, which was delayed from March 2020, *Yes*, is happening next month, October 9, 2021 at the Pritchard Laughlin Civic Center in Cambridge, Ohio. There will be a membership meeting Friday evening October 8, followed by a preview of the auction.

The auction listing was printed in both the January 2020 and January 2021 issues of the Crystal Ball. You can view photos of the items at <https://auctions.mvsg.org>

Saturday morning preview will begin 8:30 with a start time for the auction of 9:30. We will once again have Theo's offering lunch. They will be taking orders between 8:30 and 9:30.

As we plan for our March 2022 auction, the due date for your Consignor lists will be September 24, 2021 to give us time to choose the items and get your list back to you. Some folks will likely bring their glass the weekend of the auction. We will have a set time on the day before the auction (October 8, 2021).

The Auction Committee will make final selections and notify consignors by Friday October 1, 2021 (or sooner).

September 2021

Sunday	Monday	Tuesday	Wednesday	Thursday	Friday	Saturday
			1	2	3	4
5	6	7	8	9	10	11
12	13	14	15	16	17	18
19	20	21	22	23	24	25
26	27	28	29	30		

October 2021

Sunday	Monday	Tuesday	Wednesday	Thursday	Friday	Saturday
					1	2
3	4	5	6	7	8	9
10	11	12	13	14	15	16
17	18	19	20	21	22	23
24	25	26	27	28	29	30
31						

March 2022

Sunday	Monday	Tuesday	Wednesday	Thursday	Friday	Saturday
		1	2	3	4	5
6	7	8	9	10	11	12
13	14	15	16	17	18	19
20	21	22	23	24	25	26
27	28	29	30	31		

What's Inside

Reminder: NCC 2021 and 2022 Auction	1
President's Message	3
August Adventures at the Museum!	4
Thoughts on the 2021 NCC Virtual Convention.	8
Zoom & Tell: Crown Tuscan	9
The Swan Color Chart	10
eBay Report	14
New Members.	16

National Cambridge Collectors, Inc.

PO Box 416 Cambridge, OH 43725-0416

Board of Directors

	2022	
Julie Buffenbarger	David Rankin	Frank Wollenhaupt
	2023	
Nancy Misel	Lindy Thaxton	Lynn Welker
	2024	
Cindy Arent	Larry Everett	Mike Strebler
	2025	
Ken Filippini	Freeman Moore	Christine Smith

Officers

President	Freeman Moore
Vice-President	Ken Filippini
Secretary	Nancy Misel
Treasurer	Mike Strebler
Sergeant-at-Arms	Larry Everett

Committees

Endowment	Doug Ingraham
Finance	Mike Strebler
Property	Larry Everett
Strategic Planning	Mike Strebler

Member Services

Vice President

Member Relations
Convention
Member Social Media
Glass Dash
Glass Show
Study Groups
Webmaster

Freeman Moore
Freeman Moore, Membership Database
Larry & Susan Everett
David Ray
Larry Everett & Frank Wollenhaupt
David Ray, Mike Strebler, Jack Thompson
Jeannie Moore, Study Group Coordinator
David Adams

Development

Vice President

Campaigns

Events

Projects
Publicity

Julie Buffenbarger
Ken & Jane Filippini, Annual Fund Directors
Larry Everett, Director of the Heritage Society
Bev & Will Acord,
Lynn Welker, Auction Managers
Susan Everett & Frank Wollenhaupt, Jewelry
Convention: Jonathan Fuhrman

Education

Vice President

Crystal Ball
Digital Archivist
Publications
Media Productions
Research

Larry Everett (Acting)
Freeman Moore, Editor
Dave Rankin
Larry Everett, Director of Publications
Dave Rankin, Director of Media Productions
Dave Rankin, Director

Museum

Vice President

Public Operations
Facilities & Grounds

Inventory Management
Collections
Museum Gift Shop

Archivist
Museum Social Media
Community Relations

Cindy Arent
Lindy Thaxton, Director of Public Operations
Cindy Arent,
Joe Miller,
Lindy Thaxton
Lindy Thaxton, Director of Inventory Management
Lynn Welker, Director of Collections
Cindy Arent, Gift Shop Manager
Lynn Welker, Gift Shop Manager
Mark Nye, Director of Archives
Cindy Arent, Director
Cindy Arent

Administration

Vice President

Accounting & Finance

Larry Everett
Lisa Neilson, Office Manager

MEMBERSHIP QUESTIONS?

Please send address changes to:
Membership - NCC
PO Box 416
Cambridge, OH 43725-0416
or by e-mail to:
membership@cambridgeglass.org



CONTACT US

NCC Business Manager
Phone: 740 432-4245

businessmanager@cambridgeglass.org



Freeman Moore, President

e-mail: president@cambridgeglass.org

Nancy Misel, Secretary

e-mail: secretary@cambridgeglass.org

Heritage Society

Ensuring the preservation mission of the NCC through planned giving and estate bequests.

Members of The Heritage Society are those who have included the NCC in their wills or estate plans, thus providing the organization with a secure future.

The mission of The Heritage Society is to foster smart estate planning and to assure that NCC is not forgotten as an important beneficiary. Any pledge is meaningful and appreciated.

All Cambridge collectors - both current and future - will benefit from, and be grateful for your support.

Let us know how we can help with your future plans.

Museum:

National Museum of Cambridge Glass



Like us on Facebook

Member: Cambridge Glass/National Cambridge Collectors

NCC Website: www.CambridgeGlass.org

NCC Museum Website: www.cambridgeglassmuseum.org

Miami Valley Study Group Website: www.mvsg.org



PRESIDENT'S MESSAGE

Glass Shows and Interaction

Cindy Arent reported last month that a group of NCC members met at the Fostoria Convention in June. I'll report that Jeannie and I just returned from the Houston Glass Club Show in Rosenberg TX. It was great attending a glass show and talking with the dealers. It was also enjoyable visiting with NCC members from Texas, Arizona and Louisiana. The local county mandated wearing face masks but that didn't interfere with looking at a lot of great glass. I understand attendance was close to their previous show. It seems that everyone was excited to get their "glass fix" after missing it for nearly two years.



I'm making plans to attend our delayed and rescheduled auction set for October 9th. I hope you'll feel comfortable in attending. If not, make sure to get your absentee bid submitted in time. And it's also time to start getting the consignment lists submitted for consideration for the March 19, 2022 auction. All of the detail was in Bev Acord's article in the August issue of the Crystal Ball.

I'm going to repeat myself slightly from last month. Getting volunteers to help out with activities is a challenge. There are numerous cases where the same person has been doing the task for many years, and could use relief. One example is our NCC Webmaster. David Adams has been maintaining the website for a number of years and needs someone younger to take on the task. See the "help wanted" ad later in this issue.

We also need to find volunteers who want to provide direction for this organization by serving on the Board

of Directors. We are an international organization with Friends of Cambridge in Canada and Japan. We need a diversity of inputs. The board meets by Zoom conference call. Think about it. Don't let distance be a barrier. We need to be thinking about the future of this organization; how will it be different five years from now? What should be our #1 priority?

There seems to be an increasing number of glass shows scheduled for the fall months. Consider being an ambassador for NCC to help others learn about us. Let me know if you need any membership materials for distribution.

The monthly Zoom & Tell session are continuing on the third Thursday of the month. David Ray has provided a good summary for the July session. I have enjoyed seeing some members who live far away (such as San Antonio, San Diego, Los Angeles, etc.) participating on Zoom. If you don't get the email reminder, you can find the details on the home page of the NCC website.

What's coming?

Be safe. Be careful. Take the correct precautions.

We want to involve you as much as possible.

What's on your Cambridge "wish list" for this year and beyond, and how can we help?

Sincerely,

Freeman Moore
president@cambridgeglass.org

August Adventures at the Museum!

By Cindy Arent

One thing about volunteering at the Museum is that we never know what will happen next and to always be prepared. Several members stopped by in August to see the museum, bring donations and help with projects. It was so nice to see them!

On August 8th, Kevin Draiss and his family arrived at the museum with history to share! Kevin's great grandfather was Walter F. Guegold. Mr. Guegold was the artist responsible for creating many of the Cambridge etching plates. He spent many tedious hours drawing the design for each piece in the line he was completing for The Cambridge Glass Company. When the Draiss family arrived, the children said they had something for us. They donated the proceeds from selling soda at their yard sale. It was a \$100 donation to help with the framing and preservation of the twelve etching drawings donated by their father, Kevin Draiss. How nice! I have contacted the Ohio History Connection for advice on preserving the drawings.



Kevin Draiss and his family enjoyed sharing a few of the etching drawings done by his great grandfather, Walter F. Guegold. Shown in the photo (front) Emilia and Danica Draiss. In back are Rylan, Kevin and Erika Draiss. The girls made a \$100 donation, their earnings from selling soda at their yard sale. Thank you!

Speaking of etching, Mary Ann Milton, who worked in the etching/painting department at The Cambridge Glass Company, visited the museum with her family. The visit was arranged by NCC member Diana McMahon. Mary Ann wanted to see the new documentary and she and her family loved it. She also enjoyed touring the museum to see the beautiful glassware that brought back many fond memories.



Mary Ann Milton (seated) worked in the Etching Department at The Cambridge Glass Company. Standing to Mary Ann's left is member Diana McMahon. The other ladies are Mary Ann's family. Thank you for visiting.

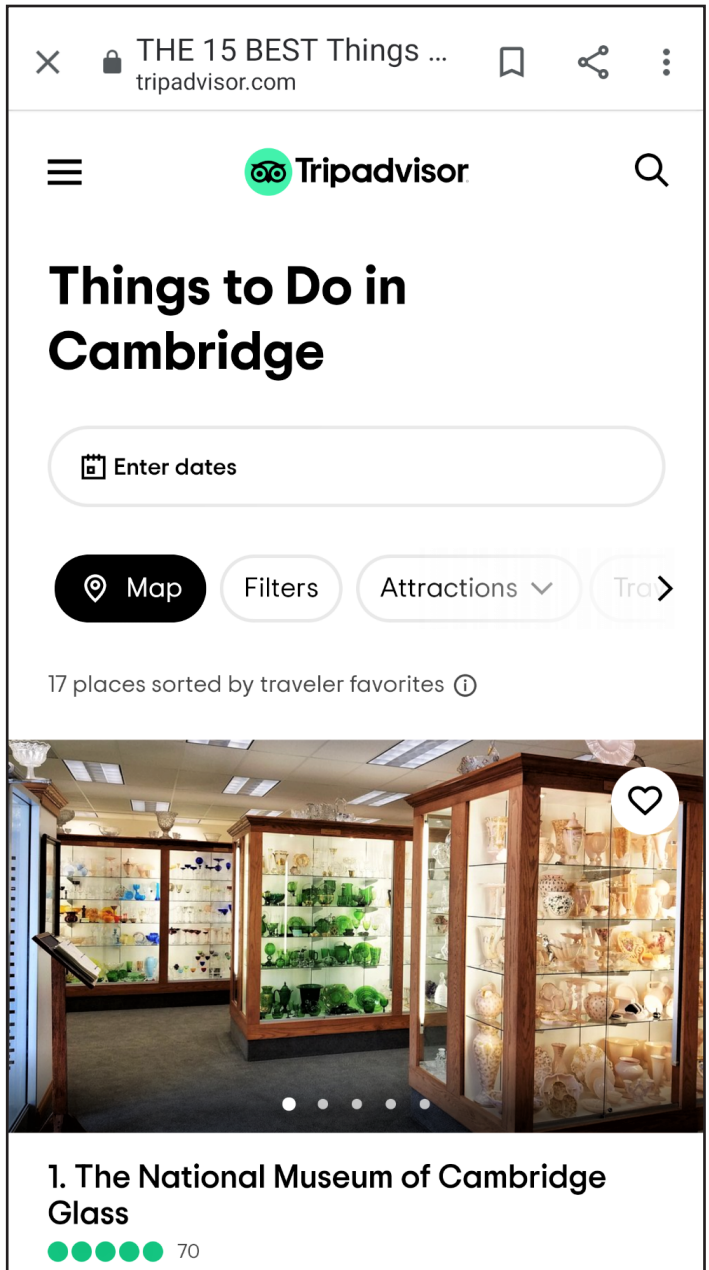
The museum building and grounds require constant cleaning and maintenance. For example, we recently thought there was a roof leak and called Surgent Construction. The good news is there was not a problem with the roof, only clogged drains from storm debris.

At this point, I have no news to share about the two grants recently submitted. I should hear something by the end of August about the SHARP Grant submitted to Ohio Humanities for Museum operating expenses. It will be late fall before we hear about the grant submitted to the Cambridge

Kiwanis Foundation. The grant received through the Cambridge/Guernsey County Visitors & Convention Bureau is currently being used to purchase Museum rack cards for both the regular and holiday seasons and website updates.

We make every effort to ask travelers how they discovered the Museum. This season, many have said they searched “things to do near me” on their device as they were driving down the highway. The National Museum of Cambridge Glass popped up at the top, or very close to it depending on the search. This is the reason it is VERY important to monitor reviews on several sites and respond accordingly. If you have been to the museum, please post a review on Google, TripAdvisor, Yelp or any site available to you. This is the future of marketing and advertising our beautiful Museum, NCC and Cambridge Glass.

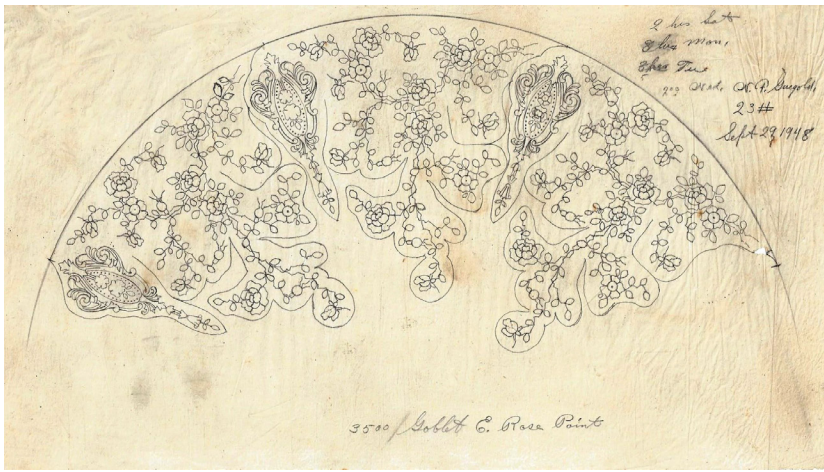
We hope to see you at the museum soon or if you aren't able to visit, watch the Facebook page or website for any breaking news! ■



This screenshot was shown to us at the museum by one of our visitors when we asked them how they found us. It seems to be the way many people are traveling this year



NCC members Bret Price and Charles Tandy helped move some items to the NCC Storage Building. Thank you!



This Rose Point drawing was for the 3500/ Goblet. It is signed by Walter F. Guegold. He also recorded the time it took to create many of his drawings. This drawing took 20 hours and was finished on September 29, 1948.



Members Scott and Kathy Adams visited the museum. They arrived with several nice donations. Thank you!



David Ray went up the ladder to change a few ceiling tiles. Thank you!



The No.807 – 6” Flat Rim Baked Apple (Decagon/ Peach Blo) is a wonderful way to entertain. Thank you to member Sally Slattery for preparing the baked apple.

In Memoriam

NCC is saddened to learn of the recent passing of Ray Mahoney member #6056. Ray was an avid collector, dealer at NCC shows and show promoter. We send our thoughts and prayers to the family.



Wanted!

#3750 Tall Sherbets: Engraved Bexley

Each year during the holiday season we sell "White Christmas" gift boxes. We are in need of several #3750 tall sherbets, engraved Bexley. If you have any you would like to sell or donate, please call the Museum at 740-432-4245. Thank you for your help.



Webmaster

**HELP
WANTED**

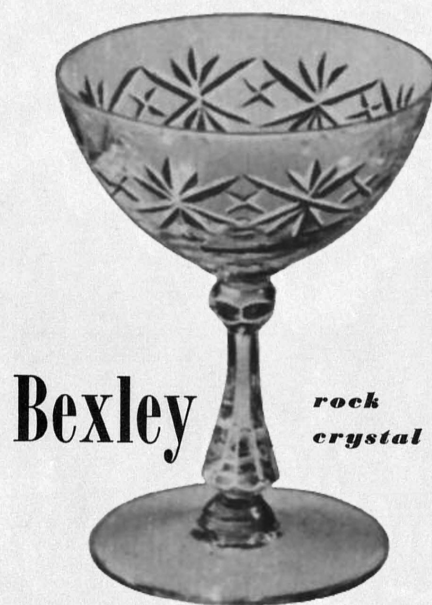
NCC recognizes the importance of having a digital presence, and our website, along with Facebook, are key methods of keeping our members up-to-date about events.

David Adams has maintained the NCC website www.cambridgeglass.org for a number of years and is looking to pass the task to another volunteer.

If you are proficient with web page development, HTML, etc. (or if you're a parent, maybe your child is doing this as part of their coursework), let us know.

Send any questions to:
webmaster@cambridgeglass.org

And yes, send "Thanks" to David at that email!



Bexley

*rock
crystal*

by

Cambridge



Our Thoughts on the 2021 NCC Virtual Convention

by Tim and Nancy Crose

Even though the 2021 NCC Convention was to be held virtually, we decided to make the trek to Cambridge and so glad we did, it was a wonderful adventure.

As most of NCC attenders do, the first stop is the National Museum of Cambridge Glass. The installation of the new lighting in the display cases really brought out the beauty of the array of elegantly designed glass. Another plus was being greeted by the glowing faces and smiles each time we stopped at the National Cambridge Museum by Cindy Arent, Anna Pavlo, Lindy Thaxton and Julie Davie. We also had the opportunity to patronize *Black Cat Vintage* which is a new business in the space previously occupied by *Penny Court*.

The 2021 NCC Virtual Convention had three events:

1. *Zoom & Tell* showcasing Cambridge colors of Moonlight and Willow Blue;
2. *NCC Annual Meeting* and
3. *Toast to Cambridge*.

It was a blessing to be able to personally be with Freeman and Jeannie Moore, Jack and Elaine Thompson, David Ray, Lynn Welker, Stu Sandler, Richie Bennett, Bobbie Henderson, Tim and Chris Smith, Lindy Thaxton and Mike and Cindy Arent at some of the various events.

During our Cambridge adventure we attended two impromptu gatherings:

(1) Richie Bennett and Bobbie Henderson invited us to see their new addition to their abode • *the showcase room* • which elegantly displayed Cambridge glass from Richie's years of having the opportunity to obtain an array of beautiful and unique pieces of Cambridge elegant glass. Richie and Bobbie had two formal dining room tables – one table displayed an extensive table setting of Caprice Moonlight Blue and the other table displayed an extensive table setting of etched Gloria in Heatherbloom. Both were absolutely gorgeous, Thank you Richie and Bobbie for opening up your *showcase room*. ***Simply outstanding!***

(2) A few of us gathered at the National Cambridge Museum after 4:00 PM and Lynn Welker walked us through the years of glass and gave a history of various pieces displayed in the display cases, Thank you Lynn for your tour of history. ***Amazing*** (If only we were sponges

and could retain the history - unfortunately we are like the Scare Crow in the Wizard of Oz, if only we had a brain).

As we all know, there is a possibility when we are interested in piece of Cambridge Elegant Glass on eBay, we may be bidding along with a fellow Cambridge Elegant Glass Collectors, and that is what occurred when Richie and Tim were bidding on a twelve-inch Everglade Springtime grass flash. Richie was highest bidder, but Richie was gracious and afforded Tim the opportunity to hold and admire the twelve-inch Everglade Springtime grass flash.

The finale for the 2021 NCC Virtual Convention "*Toast to Cambridge*" was attended personally by several of the aforementioned individuals at the Hampton Inn along with those who attended through zoom. Each participant showed their favorite stem (or at least one of their favorite stems or cup or mug or whatever). It was fun seeing all the various stems, and asking about what type of beverage was in each! A wonderful way to complete the 2021 NCC Virtual Convention.

We look forward to seeing everyone in October for the auction. ■

3134 goblet, engraved Broadmoor
3121 10 oz. goblet, Rose Point
3035 10 oz. goblet heather bloom, Gloria
Caprice 200 goblet, Moonlight
Caprice 300 9 oz. goblet, La Rosa
1630 12 oz. ice tea goblet, E740
3075 goblet, GE Imperial Hunt
3600 12 oz. goblet, engraved 988, Petite
3115 9 oz. goblet, with Ebony stem and foot and a wide optic
3011 banquet goblet, Heatherbloom, Apple Blossom
16 oz. sham cut flutes, optic, Apple Blossom
3011 table goblet, Smoke Crackle
3011 table goblet, Pink Crackle
3799 2 oz wine, GE Elaine
300 4 ½ oz. claret Pistachio
3104 9 oz. goblet Royal Blue
3790 goblet, engraved Sunburst
1402/100 goblet, engraved Mansard
3500 10 oz. goblets, Royal Blue, D/1037
16 oz. glasses made in 1958 from the 1321 decanter, Carmen with a crystal foot
3121 10 oz. footed tumbler engraved Achilles
595 12 oz. beer mug, Amethyst

Zoom & Tell: Crown Tuscan

by David Ray

One of the most widely collected colors of Cambridge glass is Crown Tuscan. Henry Helmers created the formula for Crown Tuscan during his tenure at the Cambridge Glass Company and introduced it to the public in 1932. Les Hansen provided insight to the early challenges Cambridge had with producing Crown Tuscan. Much like Peachblo and Dianthus Pink, Cambridge initially had difficulty maintaining a consistent color for Crown Tuscan. As part of the manufacturing process, arsenic was added to the formula to eliminate air bubbles from the glass. Adding arsenic to the batch resulted in Crown Tuscan having a brown color as opposed to a soft pink color. At some point, the chemical formula was modified to allow for a more consistent color to be produced until the close of the company. Items from the Sea Shell line produced in Crown Tuscan were listed as "Coral" from 1932-1934. The name change was likely a marketing strategy used to promote the large number of Sea Shell items produced in Crown Tuscan.

Given the large number of items collectors can find in Crown Tuscan, it was clearly very popular with the public during its more than 20 years of production. With a soft pink opaque color, Crown Tuscan provided a wonderful background for various decorating styles. During the first few years of production, Cambridge highlighted items with red, black and green enamel trim. These pieces are difficult to find due to the limited years of production, thus leading to a higher cost to collectors. Of the three enamel decorations, black is the most common decoration to find. Guests of the July Zoom & Tell provided several wonderful examples possessing the enamel trim decoration. In addition, Cambridge



applied gold trim and various gold encrusted etching decorations to Crown Tuscan. To my knowledge, the etchings applied to Crown Tuscan include Rose Point, Portia, Diane, Candlelight and Chintz. A very limited number items have been discovered with the Gloria and Minerva etchings.



The Charlton Decorating Company and the Rockwell Silver Company purchased select pieces of Crown Tuscan to decorate and market for themselves. The Charlton Decorating Company applied multiple hand-painted floral designs on a wide variety of pieces. The Rockwell Silver Company applied the "Silver Seahorse" decoration to items mainly from the Sea Shell line. Items possessing the Rockwell silver decoration are much more difficult to find and are highly prized by Cambridge glass collectors.



The September Zoom & Tell will be led by Larry Everett on the topic of Cambridge colors. The September Zoom & Tell is scheduled for Thursday, September 16 at 8:00 pm. If you missed the August Zoom & Tell, email Freeman Moore at membership@cambridgeglass.org.



The Swan Color Chart

By Jack Thompson

The next chart to get an update is the Swan Color Chart. Previous charts were done years ago by swan experts Les Hansen and Bill Alexander. Thanks to Les, Bill and Mike Strebler for all their thorough research and help in putting this together. There were some things, but not many, that have been changed, added, etc. since the previous charts were done, so please pay close attention.

Swans are measured from the tip of the tail to the front of the breast, not the beak.

The #1221 – Punch Bowl is the exception. It was listed as a 16” Punch Bowl when introduced, but it measures 13” from tail to breast. No one knows why. This was a surprise to me after all these years. I was schooled by the swan experts. The differences between the #1221 – Punch Bowl and the #1045 – 13” Swan are fairly easy to discern once you know what to look for. The punch bowl is more rounded, when looking from the top down. It is much thicker and heavier. If looking at a side view, the feather patterns are different.



#1221- Punch Bowl & #1045 - 13” Swan

Dianthus Pink was added to the Peach-blo line, and LaRosa was removed. Of course Peach-blo and Dianthus Pink are the exact same formula. Cambridge changed the name to Dianthus Pink in the early 1930s. The 6 ½” Type 3 was the only item affected by this. It was originally thought that there was no overlap between Dianthus Pink and LaRosa. This necessitated the need to include this blank on the LaRosa line, as it was produced

after LaRosa was introduced. We now know that those colors were produced simultaneously.

The Moonlight 8 ½” Type 3 is now known to exist and has a check mark. The color Amber can vary widely, including from dark to light. It is entirely possible that swans were produced in Madeira and/or Mocha, and I believe some examples certainly look like they could be. However, there currently is no known documentation that Cambridge did so, and so they were not included.

Notes were added regarding the #1048 and #1492 Candy Box & Covers, from my review of the Move & Cost Books as well as circular letters. These utilize the #1043 – 8 ½” Type 1 and Type 2 swans, respectively. There is also a line in the Move & Cost Book for a #1047 – Candy Box & Cover utilizing the #1042 – 6 ½” swan, but the entries are blank. We are assuming for the moment that the cover was never produced.

For information on identifying the differences between the three types of swans, see Les Hansen’s excellent Crystal Ball article in the June, 1999 issue <https://mvsg.org/files/cb/1999-06.pdf>.

Reissues of Cambridge swans by other companies were numerous, and it would fill an entire article talking about them. Please see Les Hansen’s Crystal Ball article in the February, 2000 issue <https://mvsg.org/files/cb/2000-02.pdf> for the complete story. As an update, in 2006 NCC did purchase the molds from Summit Glass for the 6 ½”, 8 ½” and 10” swans.

Finally, as with the previous #3011 color chart, decorations are a large enough topic for another day or another author, so are not included here. This chart includes everything that is known to exist today. Please let me know if there is something we are missing. You can find this and other previously completed charts on <https://mvsg.org> under the Charts and Listings section. ■

Cambridge Swans

X = Known to Exist

Catalog Number	Type 1					Type 2					Type 3									
	1040	1041	1042	1043	1044	1045	1040	1041	1042	1043	1044	1045	1221	1040	1041	1042	1043	1044	1045	1221
Size - Breast to Tail	3"	4 1/2"	6 1/2"	8 1/2"	10"	13"	3"	4 1/2"	6 1/2"	8 1/2"	10"	13"	16"	3"	4 1/2"	6 1/2"	8 1/2"	10"	13"	16"
Crystal	X	X	X	X	X	X	X	X	X	X	X	X	X	X	X	X	X	X	X	X
Emerald (Light)	X	X	X	X	X	X	X							X						
Peach-blo/Dianthus Pink	X	X	X	X	X	X	X									X				
Ebony	X	X	X	X	X	X	X													
Amber					X		X													
Gold Krystol					X		X													
Forest Green					X		X													
Crown Tuscan					X		X							X						
Carmen							X							X						
Royal Blue																				
Moonlight										X							X			
Mandarin Gold														X		X				
Emerald (Late Dark)														X		X				
Milk														X	X	X	X			X
Smoke														X						

Notes:

- 1) A separate candle holder insert, #1050, was made for the 4 1/2" Type 1 swan in crystal, Light Emerald, Peach-blo, and Ebony.
- 2) The 4 1/2" Type 3 swans in crystal and Milk were also made with a candle holder as part of the swan, also the #1050.
- 3) A separate cover was made for the Light Emerald 8 1/2" Type 1 swan to become the #1048 - Candy Box & Cover. It had feather detail, but no knob. Around 1937 or just prior to, the mold was reworked. Feather detail was removed and a place for a rose knob added. Using the Type 2 - 8 1/2" swan, this became the #1492 - Candy Box & Cover. It was produced in crystal and Moonlight.
- 4) Separate #1052 flower pot inserts, were made for the #1044 - 10" Type 1 swans in crystal, Light Emerald, Peach-blo and Ebony.
- 5) Amber swans vary greatly in intensity of color. No documentation exists of swans produced in either Madeira or Mocha.
- 6) Although listed as 16" by Cambridge, the punch bowl actually measures approximately 13".

Examples of Sizes and Colors



#1040 - 3" Swan, Type 2, Crystal Frosted, Coral Enamel Beak, Black Enamel Feet



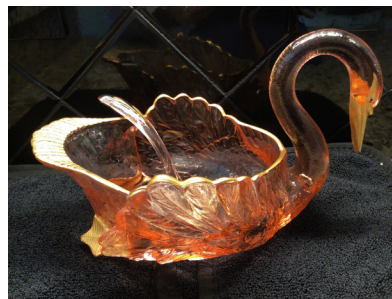
#1040 - 3" Swan, Type 3, Mandarin Gold



#1040 - 3" Swan, Type 2, Royal Blue



#1041 - 4 ½" Swan, Type I, & #1050 Candle Holder Insert, Light Emerald



#1042 - 6 ½" Swan & Mayonnaise Ladle, Peach-blo, Gold Trim



#1042 - 6 ½" Swan, Type 3, Carmen



#1042 - 6 ½" Swan, Type 3, Milk, Charleton Spattered Roses Decor



#1042 - 6 ½" Swan, Type 3, Emerald



#1043 - 8 ½" Swan, Type 1, Forest Green



#1043 - 8 ½" Swan, Type 3, Crown Tuscan, Charleton Blue Mist Decor



#1043 - 8 ½" Swan, Type 1, Gold Krystol



#1044 - 10" Swan, Type 1, Amber



#1044 - 10" Type 1 Swan, #1052 Insert, Peach-blo



#1045 - 13" Swan, Type 1, Ebony



#1052 - 10" Flower Pot, Type 1; Includes #1044 Swan & #1052 Insert, Peach-blo



#1221 Punch Bowl Set



#1492 - 8 1/2" Type 2 Swan & Cover, Crystal



#1492 - 8 1/2" Type 2 Swan & Cover, Moonlight

Welcome to the eBay Report, featuring Cambridge glass items that sold on eBay circa mid-July to mid-August 2021. Selling prices are rounded to the nearest dollar. If no color is mentioned, assume that the piece or part of it being discussed is crystal. If I refer to an auction as "incognito," that means that the seller did not know he or she was offering Cambridge glass, and didn't list the item in one of the Cambridge glass categories. I am also trying to make sure I mention if a listing was a Buy It Now offering, as opposed to an auction style listing. I think it's important to distinguish between the two, as the price for an auctioned item reflects competitive bidding (or no competition, if it sells for the opening bid.) Here we go:

Rose Point

A #3500/37 7 inch wide (8-3/4 inch tall) 2-handled comport sold for a too-low \$85 on a Buy It Now. What might this lil' gem have brought if it were offered auction style? I seldom see these.



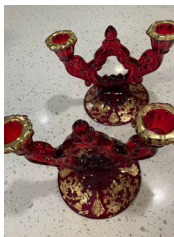
A #299 5 inch 3-toed candy with applied rose finial in Carmen sold for \$211. In my last report, I noted that the same item brought \$261.



A rare #1339 triple candlestick sold for \$150 Buy It Now.

A set of six #3400/38 12 ounce tumblers sold for \$360 Buy It Now.

A 12 inch flip vase sold for \$450 Buy It Now. The same vase, offered by the same seller, sold for \$500 back in May. The 8 inch size is listed as a #797; what number would this one be?



A pair of #3400/647 double candleholders in Carmen with gold encrusted Rose Point sold for \$535. There was some wear to the gold on the edges of the candle sockets.

Statuesque (Nude Stem) and Related Items

A Banquet goblet with Royal Blue bowl and gold line trim at the rim (double line) and around the foot (single line) sold for the opening bid of \$175.

A shell mint dish with Amber top sold for \$280. Surprisingly, the same item in solid Crystal brought only slightly less back

in June, at \$245.

A tall covered cigarette box with Forest Green top sold for \$325. Some flaws, a scratch, and minor roughness were noted.



Gold, Silver and Enamel Decorations

A pair of #226 9 inch candlesticks in Helio with a gold encrusted band etch on the disc foot sold for \$93, reduced from \$115.



A pair of #437 9-1/2 inch candlesticks in dark Amber etched with "early" Wildflower sold for the \$80 opening bid.



A #3400/38 80 ounce ball jug with an acorn and leaf decoration I have never seen before blew away for \$125 Buy It Now.

A pair of #3400/1268 double candleholders etched and gold encrusted Candlelight (including 4 bobeches with 2 notches and 16 prisms) sold for \$270 Buy It Now.



A #3500/42 12 inch covered urn with gold encrusted Rose Point etching sold for \$660 Buy It Now. This one had an undecorated lid with a paneled effect. A #3500/42 13 inch covered urn in Crown Tuscan with gold encrusted Diane etching sold for \$395 Buy It Now. The same item, etched Portia, with some gold loss on the foot, mustered only \$255. The seller stated that this one was 12-1/2 inches high. What's with the one-inch size range discrepancy here? They're listed in the catalogs as 12 inches high. The Diane and Portia urns had the fancier ribbed lid with more ornate finial.



A #3400/100 76 ounce ice lip jug in Royal Blue with crystal handle and DePasse Pearsall swan silver deposit decoration sold for \$875 Buy It Now.

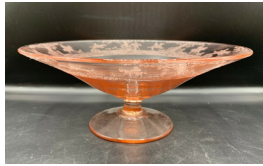


Miscellaneous



A Jenny Lind candy base in Rubina sold for \$76. I always thought of this as a late pattern, so I was surprised to see it in Rubina. Maybe I need to study harder.

A #441 11 inch low footed comport in PeachBlo with Hunt scene etching sold for \$125 Buy It Now.



A NearCut Fernland child's table set consisting of a covered sugar, cream, spoon holder and covered butter in green played nice for \$143.

A pair of #2682 7-1/2 inch candlesticks in Helio lit the way for \$145.



A #2651 Feather 2-handled covered cracker jar in dark green carnival glass with very nice iridescence sold for the opening bid of \$145. However, a diligent searcher found the identical item in an incognito listing, which ended up selling seven days after that one, for a mere \$32.

A Light Emerald #823 centerpiece sold for the opening bid of \$149. Last month I reported on one in PeachBlo with an 8-1/2 inch Draped Lady figural flower holder that sold for \$235 Buy It Now.



A Cambridge Glass prism advertising sign, still on the bust-off, in a vaseline-like color was offered at \$175 but sold for an undisclosed Best Offer. Is it just me, or does this seem like a reproduction one? The real [finished] ones are ground on the ends and the bottom, and have some beveling. Obviously this one is unfinished, but it made me suspicious. I admit, it was cool to see one with the bust-off attached, as this is a great lesson about how things like mayonnaise ladles, salad forks and spoons, and similar items are cast in the mold and finished.

A #3500/21 12 inch footed and handled oval bowl with Adonis cutting sold for \$191 Buy It Now, marked down from \$225.

A #2977 reamer in PeachBlo was offered for \$195 and sold for an undisclosed Best Offer.



An Emerald (dark) green carnival glass 7 inch Strawberry candlestick sold for \$221, reduced from the original asking price of \$295.



A #40 Seashell flower or fruit arranger (commonly referred to as the Flying Nude bowl) in satinized Crystal sold for \$380 in a Buy It Now listing.

A #1 Keg Set in Light Emerald Green, complete with 6 barrel tumblers and tray, stand and stopper in Ebony, sold for \$725 Buy It Now. This was one of the highest prices I've seen for a keg set lately. Interestingly, the seller had a second keg set in Topaz (i.e., vaseline.)



However, instead of the wooden barrel effect on the main portion and little whiskeys, it had an all-over puzzle or crackle effect. The tray on the latter set did not have the tab handles, but otherwise it was very similar in size and shape. Did I overlook this in my Cambridge glass reference books, or is this a stunning lookalike?

Finally, a Monkeys lamp in very good condition was offered for \$1,350, and sold for an undisclosed Best Offer.



Correction

After reading the August issue of the Crystal Ball, and the report on the Zoom & Tell featuring Willow Blue and Moonlight Blue, I learned that the Everglade line was made in both colors. I did not realize that! Now I need to go back and look at the 4 pieces of Everglade I reported on, and see if I can tell which color (or colors) they are.

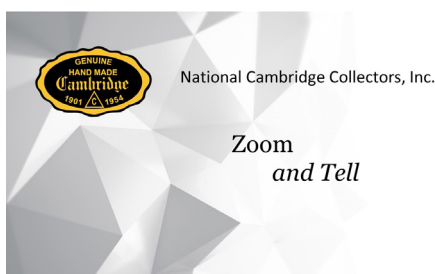
That's it for now. If you see any interesting Cambridge glass on eBay that you think I should be watching or reporting on, or if you have any other input, feel free to contact me at LAGlass@pacbell.net. I am well aware that I don't catch every interesting listing, especially those in a category other than Cambridge. Until next time, happy Cambridge hunting!

NCC Events

**Benefit Auction - rescheduled
Saturday October 9, 2021**

**2022 NCC Auction
Saturday March 19, 2022**

**2022 NCC Convention
June 23-25, 2022**



Contact membership@cambridgeglass.org if you don't get the monthly email with the Zoom information.

September	Program on Colors
October	Black: Ebony and Ebon
November	Frosted/Satin/Alpine
December	Amethyst

Member Benefit

Each NCC household is allowed one free 20-word classified ad in the Crystal Ball per calendar year as part of their membership. This can be a "For Sale" or "Wanted" type of classified ad. Submit your ad by email to editor@cambridgeglass.org

CLASSIFIEDS

Nothing this month.

October 2-3, 2021

Front Range Glass Show
The Ranch Event Complex: McKee Exhibit Hall
Loveland, CO
frontrangeglassshow@gmail.com

October 6-9, 2021

22nd Annual Vaseline Glass Collectors Convention
details at <https://www.vaselineglass.org>
Pittsburgh, PA

October 16-17, 2021

Milwaukee 43rd Annual Vintage Glass Show & Sale
Knights of Columbus Hall
732 Badger Avenue
South Milwaukee, WI 53172
degswisconsin@gmail.com

October 22-23, 2021

Valley Glasshoppers Fall 2021 Glass Show & Sale
1309 Opequon Ave
Winchester, VA 22601
valleyglasshoppers@yahoo.com

October 30-31, 2021

Peach State Depression Glass Club
44th Vintage and Collectible Glass Show
Cobb County Civic Center
Marietta, GA 30060
<http://www.psdgc.com/show.htm>

November 6-7, 2021

Michigan Depression Glass Society
48th Annual Depression Glass Show & Sale
Ford Community & Performing Arts Center
15801 Michigan Ave
Dearborn, MI 48126
<http://www.Facebook.com/MIDepressionGlass>

Glass Shows

NCC welcomes the following new members

Barbara Henkel VA
Robert Henkel VA

Recruit
and
Retain

Give this page to a friend



The National Cambridge Collectors
P.O. Box 416 ~ Cambridge, Ohio 43725

“FRIENDS OF CAMBRIDGE” MEMBERSHIP

The National Cambridge Collectors, Inc. (NCC) is a non-profit organization dedicated to the education and preservation of the great work of the Cambridge Glass Company. Founded in 1973, we depend on the financial support of our members, who we call **Friends of Cambridge**, for the majority of our operating budget. Won't you consider becoming a Friend of Cambridge? You can also complete this online at: <http://cambridgeglass.org/online/>

Friend #1 _____

Friend #2 _____

Friend #3 _____

(continue on reverse if needed - indicate any children and their year of birth, only those 18 and older residing in your household may vote)

Address _____

City/State/Zip _____

Email Address (required) _____

Phone Number _____

Crystal Ball newsletter delivery: ___ email (color) ___ paper (black & white)

Glass collecting interest: _____

New Member? (Y/N) ___ or Renewal? ___ If renewal, Member #s _____

Levels of Membership

Patron \$ 35

Century Level	\$ 100	Mardi Gras Level	\$ 200
Japonica Level	\$ 500	President's Circle	\$ 1,000

All members receive the Crystal Ball, free Museum admission and 10% off any book/DVD purchases, President's Circle includes Convention registration for two members in the household and one free copy of any new NCC publication.

All memberships are renewed annually via The Annual Fund mailing in late March/early April. All Annual Fund gift recognition levels are per household and include membership for everyone within the household 18 and older. Each household will receive a subscription to the Crystal Ball newsletter, unlimited admissions to the museum, and rights to vote in elections for the Board of Directors and discounts on NCC books. NCC is a 501(c)(3) organization and Annual Fund gifts are allowed as a tax deduction under Section 170 of the Internal Revenue Code. Contact your tax advisor for your individual situation.

Return this form with check or money order payable to NCC, Inc. at the above address.
And always visit us at www.cambridgeglass.org to see what's new!

For Sale - NCC Publications

Published by NCC • Members receive a 10% discount

TITLE		REGULAR PRICE	MEMBER PRICE
1903 Cambridge Glass Catalog reprint	106 page reprint, paperback.	\$5.56	\$5.00
1910 NearCut Catalog Reprint	108 pages, paperback, no price guide	\$14.95	\$13.45
1927-29 Catalog Reprint	66 pages, paperback, no price guide, includes identification guide	\$9.95	\$8.95
1930-34 Catalog Reprint	250 pages, paperback with 2000 price guide	\$14.95	\$13.45
1930-34 Catalog Index	Index for above	\$2.00	\$1.80
1940s Cambridge Glass Catalog reprint	613 page reprint, 3 hole punched	\$19.95	\$17.95
1949-53 Catalog Reprint	300 pages, paperback, no price guide	\$19.95	\$17.95
Cambridge Rose Point – A Collector’s Guide 2018	color, spiral bound	\$29.95	\$27.00
Cambridge Rose Point – 2nd Edition 2007	146 pages, paperback, no price guide	\$19.95	\$17.95
Caprice	200 pages, paperback, no price guide	\$19.95	\$17.95
Decorates	136 pages, paperback, no price guide	\$14.95	\$13.45
Etchings 2nd Edition 2006	102 pages, paperback, no price guide	\$17.95	\$16.15
Etchings: Blossomtime	26 pages, paperback, no price guide	\$7.95	\$7.15
Etchings: Candlelight	30 pages, paperback, no price guide	\$7.95	\$7.15
Etchings: Chantilly	44 pages, paperback, no price guide	\$7.95	\$7.15
Etchings: Diane	53 pages, paperback, no price guide	\$7.95	\$7.15
Etchings: Elaine	64 pages, paperback, no price guide	\$7.95	\$7.15
Etchings: Portia	57 pages, paperback, no price guide	\$7.95	\$7.15
Etchings: Wildflower	42 pages, paperback, no price guide	\$7.95	\$7.15
Rock Crystal Engravings	119 pages, paperback, no price guide	\$17.95	\$16.15
Rock Crystal Engravings (Listings)	Companion to above; lists all pieces in all patterns	\$9.95	\$8.95
Other:			
Cambridge Ohio Glass in Color	by Mary, Lyle and Lynn Welker 30 pages, color	\$6.61	\$5.95
Reflections	by Degenhart Paperweight & Glass Museum 45 pp	\$5.56	\$5.00

How to Order by Mail or from the NCC Website

Send orders to:
NCC • PO Box 416 • Cambridge, OH 43725

OHIO RESIDENTS PLEASE ADD 7.25% SALES TAX

SHIPPING:
\$8.00 FOR THE FIRST PUBLICATION
\$2.00 FOR EACH ADDITIONAL ITEM

Please include your name, complete mailing address and your phone number or e-mail address.

Payments by check or Money Order only, payable to NCC

Books may also be purchased on the NCC website,
www.cambridgeglass.org.

available on
amazonkindle

The following books can be purchased on Amazon and downloaded to your Kindle device



Cambridge Glass Colors



Cambridge Rose Point

DEALER DIRECTORY

Dealer Directory - \$24 for 12-months, size limited by box (see below). Includes listing on NCC website. Electronic submissions should be emailed to: editor@cambridgeglass.org

Advertising Rates:

1/8 page \$15 1/4 page \$20
 1/2 page \$30 Full page \$50

Mailed submissions and all payments should go to PO Box 416, Cambridge, OH 43725. Deadline is 10th of preceding month. Ads must be paid in advance. Show listings are FREE; send info to PO Box or e-mail address 60 days before event.

<p style="text-align: center;">Max Miller Elegant American Glassware www.maxmillerantiques.com</p> <p>The Market Place 10910 Katy Freeway. 713-410-4780 Houston TX 77043 mmxglass@aol.com</p>	<p style="text-align: center;">ISAACS ANTIQUES (740) 826-0696</p> <p style="text-align: center;">↔ located in ↔ DealBusters Marketplace 61 S. 2nd Street Byesville, OH (740) 605-1010</p>
<p style="text-align: center;">Glen & Carolyn Robinson White Rose Antiques Specializing in Depression Era Glassware</p> <p style="text-align: center;">2454 McFarland Road York, SC 29745</p> <p>803-684-5685 gandcrobinson@aol.com whiteroseglassware.com</p>	<p style="text-align: center;">MARGARET LANE ANTIQUES</p> <p style="text-align: center;">2 E. Main St. New Concord, OH 43762 Lynn Welker (740) 705-1099</p> <p style="text-align: center;">Cambridge Glass Matching Service Hours: Mon-Fri 10-12 AM, 1-5 PM or by appointment</p>
<p style="text-align: center;">CRYSTALLINE COLORS <i>Cambridge • Fostoria • Elegant Glass</i></p> <p style="text-align: center;">Medina Antique Mall Medina, OH (I-71, exit 218)</p> <p style="text-align: center;">Lynne R. Franks 216-661-7382</p>	<div style="border: 1px solid black; padding: 5px;"> <p style="text-align: center; background-color: #4b0082; color: white; margin: 0;">Connecting Buyers & Sellers!</p> <p style="text-align: center; margin: 0;">Tell us what you are looking for and we help find it.</p> <p style="text-align: center; background-color: #4b0082; color: white; margin: 0;">CAMBRIDGE GLASS.US</p> <p style="text-align: center; margin: 0;">P. Snyder 740-601-6018</p> <p style="text-align: center; background-color: #4b0082; color: white; margin: 0;">E-Mail and Find Your Glass!</p> <p style="text-align: center; margin: 0;">psnyder@cambridgeglass.us</p> <p style="text-align: center; margin: 0;">www.cambridgeglass.us</p> <p style="font-size: small; margin: 0;">When you are searching for Cambridge glass, email your request and it is emailed to all members and dealers. P. Snyder, 1500 Edgewood Dr., Circleville, Ohio 43113</p> </div>
<p style="text-align: center;">CRYSTAL LADY</p> <p style="text-align: center;">1817 Vinton St. Omaha, NE 68108 Bill, Joann and Marcie Hagerty 402-699-0422</p> <p style="text-align: center;">Specializing in Elegant Glass & Collectibles www.crystalladyantiques.com</p>	<div style="border: 2px solid red; padding: 10px; text-align: center;"> <p style="font-size: large; margin: 0;">Our House Antiques</p> <p style="font-size: small; margin: 0;">Linda and David Adams Las Vegas, Nevada 702-302-8282</p> <p style="font-size: x-small; margin: 0;"><i>Shows and Mail Order only</i></p> <p style="font-size: x-small; margin: 0;">email: David@OurHouseAntiques.com</p> <p style="font-size: x-small; margin: 0;">www.OurHouseAntiques.com</p> </div>

National Cambridge Collectors, Inc.
PO Box 416
Cambridge OH 43725
email: editor@cambridgeglass.org
website: www.cambridgeglass.org



Friends of Cambridge – Annual Fund

NCC exists through member giving using an Annual Fund system to raise operating funds and to ensure the preservation of Cambridge glass for future enthusiasts. The Annual Fund uses a common member "renewal" date and NCC sends out Annual Fund materials to everyone once a year. There are no monthly reminders or monthly renewal dates. The Annual Fund is NCC's primary means of support and all Annual Fund gift recognition levels are per household and include membership for all adults within the household. Additionally, each household will receive a subscription to the Crystal Ball newsletter, unlimited admissions to the museum, and rights to vote in elections for the Board of Directors. Multiple households at the same address are welcomed. NCC is a 501(c)(3) organization and Annual Fund gifts are allowed as a tax deduction under Section 170 of the Internal Revenue Code.

Levels of Membership

Thank you

Patron	\$35
Benefactor - Century	\$100
Benefactor - Mardi Gras	\$200
Benefactor - Japonica	\$500
President's Circle	\$1,000

Thank you

President's Circle includes Convention registration for two members in the household and one copy of any new NCC publications.

The National Museum of Cambridge Glass

Located at 136 S. 9th Street
in downtown Cambridge
Wed-Sat 9-4
Sunday 12-4

