



Cambridge Crystal Ball

Published by the National Cambridge Collectors, Inc. as a resource which informs, invites and inspires people to encourage the continued preservation of the glass produced by the Cambridge Glass Company of Cambridge, Ohio for future generations.

Issue No. 522

ISSN 2474-5987

October 2018

For A Good Time, Go To The Show

by Mike Strebler

One of the great joys in my life has been Cambridge Glass as art. The colors and shapes are astounding. I have never seen a Cambridge Glass collection I didn't enjoy. For that matter, I don't think I've ever seen a collection of any art I didn't appreciate. I enjoy every collection and the people I meet along the way.

So whenever I can get together with collectors of similar interests it is a good day. This month presents a great opportunity to get together with others who share your passion for collecting. The news of the NEOSHOW at the Cuyahoga County Fairgrounds has been on the wire for a while. Well, I intend to go, what a great opportunity to enjoy myself.

A great glass, china, and pottery show is good any weekend. What makes this one even better is the number of collectors that are coming to town for the show. There is never a shortage of glass things to talk about. An event like this also gives me the opportunity to meet new people with a common bond. The NEOSHOW is especially good for meeting people as it is a show about all types of glass, china, and pottery.

Each night there will be a get together at a local restaurant where everyone is welcome. The events are non-reservation with food and drink on your own in private rooms. The first opportunity is the night before the show on Friday evening. Starting at 5:00 on Friday, October 26th, a gathering of collectors will happen at the Brew Garden (restaurant and pub), across the street from the fairgrounds main entrance at 18590 Bagley Road.

The show starts at 10:00 on Saturday, October 27th and ends at 5:00. But that's not the end of the day. Starting at 5:00 after the show, a second gathering of collectors will happen at the Team Z Restaurant & Bar located at 6611 Eastland Road located around the corner just north of the fairgrounds.

The final collector's social will be the show on Sunday. By the end of the day, the NEOSHOW will have entertained and embraced the collector in all of us. Together with the other activities during the weekend taking place at the Vintage Market, Coral Show, and Flea Market, I hope you had fun. You can visit the NCC www.cambridgeglass.org and NEO www.northeastohioshow.com websites for hotel information and additional details about the show. Look for updates as the show approaches. ■

What's Inside

For A Good Time, Go To The Show	1
President's Message	3
Celebrate the Fall Colors of Cambridge Glass . . .	4
Fall Membership Meeting and Program	7
History Repeats Itself!	8
Texas Collectors	9
eBay Report	10
New Members	14

National Cambridge Collectors, Inc.

PO Box 416 Cambridge, OH 43725-0416

Board of Directors

2019

Rick Jones Lindy Thaxton Lynn Welker

2020

Cindy Arent Larry Everett Sharon Miller

2021

Sandra Bridwell-Walker Ken Filippini Freeman Moore

2022

Julie Buffenbarger David Rankin Frank Wollenhaupt

Officers

President	Freeman Moore
Vice-President	Ken Filippini
Secretary	Lindy Thaxton
Treasurer	Sandra Bridwell-Walker
Sergeant-at-Arms	Larry Everett

Director of Strategic Planning	Ken Filippini
Director of Human Resources	David Ray
Chair, Endowment Committee	David Rankin

Member Services

Vice President

Member Relations
Convention
Event Social Media
Glass Dash
Glass Show
Study Groups
Webmaster

Freeman Moore (acting)
Freeman Moore, Membership Database
(open)
Alex Citron
Larry Everett & Frank Wollenhaupt
Sandra Bridwell-Walker
Jeannie Moore, Study Group Coordinator
David Adams

Development

Vice President

Campaigns

Events

Projects
Publicity

Julie Buffenbarger
Ken & Jane Filippini, Annual Fund Directors
Larry Everett, Director of the Heritage Society
Bev & Will Acord,
Lynn Welker, Auction Managers
Carl Beynon, Jeweler & Scotties Project Manager
Jonathan Fuhrman

Education

Vice President

Crystal Ball
Publications
Media Productions
Research
Programming

Larry Everett
Freeman Moore, Executive Editor
Mark Nye, Director of Publications
Dave Rankin, Director of Media Productions
Mark Nye, Archivist
Greg Vass, Director of Programming

Museum

Vice President

Public Operations
Facilities & Grounds

Inventory Management
Collections
Museum Gift Shop

Archivist
Museum Social Media
Community Relations

Cindy Arent
Lindy Thaxton, Director of Public Operations
Cindy Arent,
Joe Miller,
Lindy Thaxton
Lindy Thaxton, Director of Inventory Management
Lynn Welker, Director of Collections
Cindy Arent, Gift Shop Manager
Lynn Welker, Gift Shop Manager
Mark Nye, Director of Archives
Cindy Arent, Director
Cindy Arent

Administration

Vice President

Accounting & Finance
Information Technology

Sandra Bridwell-Walker
Lisa Neilson, Office Manager
(vacant)

MEMBERSHIP QUESTIONS?

Please send address changes to:
Membership - NCC
PO Box 416
Cambridge, OH 43725-0416
or by e-mail to:
membership@cambridgeglass.org



CONTACT US

Phone: 740 432-4245
nccglass@yahoo.com



Freeman Moore, President
e-mail: president@cambridgeglass.org
Lindy Thaxton, Secretary
e-mail: secretary@cambridgeglass.org

Heritage Society

Ensuring the preservation mission of the NCC through planned giving and estate bequests.

Members of The Heritage Society are those who have included the NCC in their wills or estate plans, thus providing the organization with a secure future.

The mission of The Heritage Society is to foster smart estate planning and to assure that NCC is not forgotten as an important beneficiary. Any pledge is meaningful and appreciated.

All Cambridge collectors - both current and future - will benefit from, and be grateful for your support.

Let us know how we can help with your future plans.

NCC Website: www.CambridgeGlass.org

Miami Valley Study Group Website: www.mvsg.org



PRESIDENT'S MESSAGE

Spread The Word

It is a football weekend as I write this message. An Ohio team is playing here in Dallas Texas (okay, it's really Arlington, not Dallas), and a Dallas team is playing in Michigan. For both of these schools (and others), the publicity gained from playing the away games is invaluable. The same holds true for NCC. We have to participate in "away games" to further our mission of education and preservation. One challenge is reaching out to a new generation of people who would appreciate the quality of the products produced by the Cambridge Glass Company, but don't fit the mold of "glass collector" and probably doesn't know about NCC.

When you attend a show or meeting, invite a friend or neighbor so they can experience the event. Submit some pictures from the show and describe your experience. We have to plant seeds of interest, and let them grow.

How can we promote the benefits of our organization? The cover story on the August *Crystal Ball* was about David Ray's presentation to a Michigan Depression Glass Society monthly meeting. Did you notice how many people were in attendance? A lot! Okay, to be fair, it is a Michigan based group so its members would be local. National Cambridge Collector's Inc. is truly an international organization with members in Canada and Japan. We have members in most of the 50 states (including commonwealths and the District of Columbia). A hearty "Thank you" to David for making the time and effort to share the word about Cambridge.

Allow me to repeat Jonathan's Fuhrman's words:

"With NCC membership spanning the country, there are a lot of opportunities for us to spread the word about Cambridge, whether it is giving an overview of the company like David did, or presenting a more narrow program about a pattern you collect. While David did an excellent job, he is only one person. I highly encourage others to look for opportunities in their community to get

the word out about Cambridge. Keep in mind that it doesn't have to be to a glass collecting club. Many places like libraries or other community centers are glad to host guest speakers. Not only do these presentations help support NCC, they help to ensure the long-term interest in the glassware we collect. "

Only a small fraction of our membership will be able to attend the Fall Meeting and Educational Program in Cambridge Ohio this month. With members spread across the country, we use the website, Facebook, email, and the *Crystal Ball* to keep everyone informed. Let us know if there are specific topics you're looking for.

What's coming?

Our fall meeting will be Saturday evening October 20 at Theo's restaurant in Cambridge Ohio. Everyone has a "story" to share. All it takes is a few sentences, and maybe a photo. Stay tuned to learn about the stories told at the fall meeting.

Then just a week later, the Northeast Ohio Show will be held October 27-28, just south of Cleveland. There will be a lot of activities going on during the day, as well as social get-togethers in the evening.

I'm sure our auction committee has been busy receiving the consignment lists and making decisions. Expect to see the auction list in the January issue.

How can we spread the word? Let me know your thoughts and ideas.

Sincerely,

Freeman Moore
president@cambridgeglass.org

Celebrate the Fall Colors of Cambridge Glass

By Cindy Arent

Fall has arrived! During this time of year, it seems that the colors of Cambridge Glass sparkle even more at the museum. Amber, Forest Green, Carmen, Gold Krystol, Mandarin Gold, Dark Emerald and Rubina take on a life of their own. Just pause for a moment and visualize these spectacular colors.

Since the last issue of the Crystal Ball, we have met many visitors from all over the country. Pat Williamsen, Executive Director of Ohio Humanities, stopped at the museum while on her way to the Clark Gable Foundation Museum. It was Pat's first museum visit and we look forward to working with Ohio Humanities on a possible grant in the near future.

The Toledo Museum of Art is working on a new exhibit that will open in January. I was contacted for assistance. A copy of the newly restored Cambridge Glass Company film, *The Crystal Lady*, has been sent for their review. More information will follow as it becomes available.

The Cambridge Area Chamber of Commerce Adult Leadership group arrived at the museum on Saturday, September 8th for our Time Travelers adventure. None of the young adults had ever been to the museum, but did they ever have fun learning about the glassware and history of The Cambridge Glass Company. We are still receiving positive comments from members of the group and also requests for photos taken during the tour. We appreciate the efforts of the Chamber of Commerce, stimulating interest, involving our future leaders in area history and taking them out in the community to visit local attractions.

Plans for the Museum's Holiday Season are well underway. Do you remember when the Sears, Roebuck and Company catalog arrived at your house and you couldn't wait to make your Christmas Wish List? We have discovered that a few Cambridge pieces were sold through the Sears Catalog in the early 1900s. Visit the Museum to see which items you could purchase for family and friends if you had \$10 to spend. You will be amazed.



Patricia Williamsen, Executive Director of Ohio Humanities, enjoyed her first museum visit. We look forward to Pat's next visit.



Cambridge Area Chamber of Commerce Leadership members (Left – Right); Trent Mosser, Michael Evancho, Ashley Karlen and Sarah Burke demonstrate the handmade glassmaking process.

Trent already understood the process since his parents are Tim and Debbie Mosser of Mosser Glass.

By the time you arrive in Cambridge for the October Quarterly Meeting, the Museum Dining Room will be transformed from this year's Ebony to Forest Green. The change begins with the perfect tablecloth, which is quite a challenge since the Dining Room display table is not standard size. NCC member Sally Conaway Slattery is already busy cutting fabric and matching the pattern. Nothing is easy if it is to be done correctly.



Museum volunteer Diana McMahon (second from left) led an enthusiastic Chamber Leadership group on a tour of the glass display area.



The Museum Dining Room decked out in Ebony

The elves are also busy making Cambridge ornaments from the damaged Cambridge Glass donated by members. The goal is 100 – 120 ornaments and they will be available during the October Quarterly Meeting, through the Museum Facebook page or by calling the museum directly.

The holiday season will be here before we know it and the Museum will be ready! Hours for November and December are: Friday and Saturday from Noon – 4:00 pm; November 2 through December 15. The Annual Holiday Open House will be November 23 and 24 from Noon to 4:00 p.m. each day. We will be open additional hours for bus groups.

Hope to see you soon! ■



Holiday Open House
November 23 & 24
12-4 • Free Admission

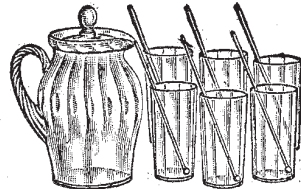
Gift Shop includes authentic Cambridge Glass, Jewelry and Ornaments made from Cambridge Glass, gift boxes with Cambridge Glass and other gifts for the holidays. Museum guides dressed in Victorian attire!

EXTENDED HOLIDAY HOURS:
Open Fridays and Saturdays
November 2 through December 15; Noon – 4:00 p.m.
General Admission \$5, AAA/Seniors \$4 and children under 12 free

National Museum of Cambridge Glass
136 S. 9th Street, Downtown Cambridge, Ohio
740-432-4245 | www.cambridgeglass.org

This ad is made possible through the support of a grant from the Cambridge/Guernsey County VCB. www.visitguernseycounty.com • 800-933-5480 • 627 Wheeling Ave., Cambridge, OH 43725

Colored Glassware Is Correct



14-Piece Iced Tea or Lemonade Set
Rose pink or green colored thin glass; 4-pint pitcher and cover, six 12-ounce iced tea or lemonade tumblers, six glass spoon sippers. Weight, packed, 16 pounds.
35K5000—Rose Pink Set.....\$2.75
35K5001—Emerald Green Set.....2.75



7-Piece Berry Set
Rose pink or emerald green colored glass with pressed paneled and border design. One 9 1/4-inch berry bowl and six 4 1/2-inch saucers to match. Weight, packed, 10 lbs.
35K5028—Rose Pink. Per set.....\$1.89
35K5029—Emerald Green. Set.....1.89



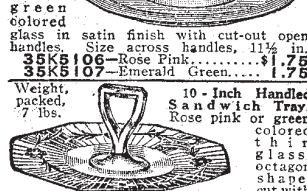
9-In. Rose Pink or Green Glass Candlestick
Wt., pkd., 6 lbs.
35K5006—Rose Pink. Pair.....\$1.50
35K5007—Emerald Green. Pair.....1.50



Bedroom Set, Water Pitcher with Tumbler and Tray. Rose pink or green colored glass in cracked design; 1-pint covered pitcher, 1/2-pint tumbler and 11-inch tray.
35K5008—Rose Pink. Per set.....\$2.10
35K5009—Emerald Green. Set.....2.10



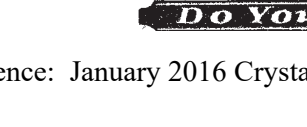
Candy Box. Pressed rose pink or emerald green colored glass with two pressed borders and pressed design in bottom. Three compartments. Fitted with a handled cover. Ht., 5 in.; diameter, 7 in. Weight, packed, 6 pounds.
35K5019—Rose Pink.....\$1.25
35K5020—Emerald Green.....1.25



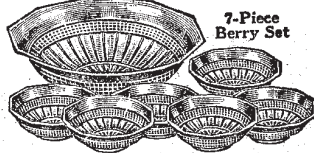
Cheese and Cracker Set
Rose pink or emerald green colored glass in satin finish with cut-out open handles. Size across handles, 1 1/4 in.
35K5106—Rose Pink.....\$1.75
35K5107—Emerald Green.....1.75



10-Inch Handled Sandwich Tray. Rose pink or green colored thin glass, octagon shape, cut with floral sprays. Cut lattice background.
35K5011—Rose Pink.....\$1.35
35K5012—Emerald Green.....1.35



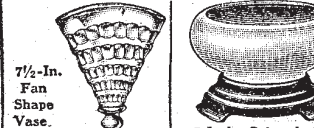
8-Inch Colored Glass Cut Salad or Dessert Plates. Thin pressed glass, either rose pink or emerald green color. Cut with a border of leaves and stems in silver gray finish. Weight, packed, 6 pounds.
35K5026—Rose Pink Salad Plates, Set of 6.....\$2.95
35K5026—Emerald Green Salad Plates, Set of 6.....2.95



7-Piece Berry Set
Rose pink or emerald green colored glass with pressed paneled and border design. One 9 1/4-inch berry bowl and six 4 1/2-inch saucers to match. Weight, packed, 10 lbs.
35K5028—Rose Pink. Per set.....\$1.89
35K5029—Emerald Green. Set.....1.89



3-Piece Console Set. Rose pink or emerald green colored glass. One 11-inch rolled edge bowl with pressed design, that reflects the light, and two 4-inch candlesticks with wide bases. Wt., packed, 7 pounds.
35K5034—Rose Pink. Per Set.....\$2.25
35K5035—Emerald Green. Set.....2.25
35K5037—10-inch pink or blue candles packed, 1 pound......25c



Covered Vanity Set or Compact. Clear rose pink or green colored glass, cut and cut on top with a floral design. Compartment for puff, rouge, and lipstick. Weight, packed, 5 pounds.
35K5098—Rose Colored Set.....\$1.48
35K5099—Emerald Green Colored Set.....1.48



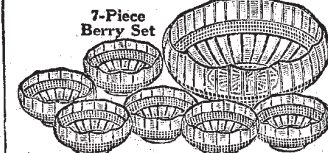
7-Inch Colored Glass Fruit or Flower Bowl. Jade green, pink luster or blue colored glass, and mounted on an ebony glass detachable base. Height, 3 1/2 in. Wt., packed, 6 lbs.
35K5054—Jade Green Bowl.....\$1.25
35K5055—Pink Luster.....1.25
35K5056—Emerald Green.....89c
35K5057—Color Bowl.....1.25



10-Inch Fruit or Flower Bowl. With removable flower holder. Rose pink or jade green colored glass, mounted on an ebony glass detachable base. Perforated around the edge of bowl border. Height, 4 inches. Weight, packed, 8 pounds.
35K5011—Rose Pink Flower Bowl.....\$2.30
35K5012—Emerald Green Flower Bowl.....2.30



13-Piece Berry Set
Rose pink or emerald green colored glass in an optic (fluted) colonial shape. One 9 1/4-inch berry bowl, six 4 1/2-inch saucers and six 6 1/4-inch saucers for the sauce dishes. Weight, packed, 12 pounds.
35K5069—Rose Pink. Per set.....\$2.75
35K5070—Emerald Green. Per set.....2.75



7-Piece Berry Set
Rose pink or emerald green colored glass. Decorated with cut lines forming panels, and a pressed design forming a border. Pressed star in bottom. One 9 1/4-inch berry or salad bowl and six 4-inch saucers to match. Weight, packed, 10 pounds.
35K5031—Rose Pink Set.....\$2.75
35K5032—Emerald Green Set.....2.75



3-Piece Console Set. Rose pink or emerald green colored glass. One large 12 1/2-in. bowl with rock crystal design in silver gray finish and two 3 1/2-in. candlesticks with wide bases. Weight, packed, 9 pounds.
35K5041—Rose Pink.....\$2.75
35K5042—Emerald Green.....2.75
35K5046—Rose Pink.....\$1.89
35K5047—Emerald Green.....1.89



10-Inch Square Vase, pressed rose pink or emerald green colored glass. Sides cut with flowers in silver gray finish. Pressed and cut border design around top. Weight, packed, 7 lbs.
35K5057 \$1.48



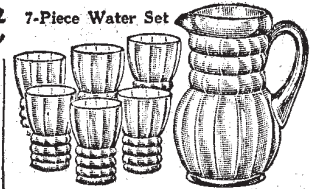
10-Inch Colored Glass Fruit or Flower Bowl. With removable flower holder. Rose pink, jade green or tangerine colored glass, mounted on an ebony glass detachable base.
35K5092—Rose Pink Fruit Bowl.....\$1.65
35K5093—Jade Green Fruit Bowl.....1.65
35K5094—Tangerine Fruit Bowl.....1.65



Footed Jar. Rose pink or emerald green colored glass with a poinsettia flower in a silver gray finish. Ht., 5 1/2 in. Wt., pkd., 3 pounds.
35K5013—Rose Pink Jar.....78c
35K5014—Emerald Green Jar.....78c



7-Piece Celery Set. Rose pink or emerald green colored glass. Set consists of one 4-pint fancy shape pitcher, 9 inches high, and six 1/2-pint tumblers to match. Weight, packed, 10 pounds.
35K5080—Rose Pink.....\$2.25
35K5081—Emerald Green.....2.25



7-Piece Water Set
Thin blown rose pink or emerald green colored glass in a fancy shape optic (fluted) design. Set consists of one 4-pint fancy shape pitcher, 9 inches high, and six 1/2-pint tumblers to match. Weight, packed, 10 pounds.
35K5080—Rose Pink.....\$2.25
35K5081—Emerald Green.....2.25



5-Piece Bridge Set. Crystal glass in rose pink or emerald green color. Four-compartment handled tray and four 10-ounce optic (fluted) tumblers. Wt., packed, 8 lbs.
35K5083—Pink Rose Set.....\$1.98
35K5084—Emerald Green Set.....1.98



4-Piece Vanity Set. Rose pink or green colored glass in satin finish. One 11-inch compartment tray, one 4-in. powder box and two 5-in. perfume bottles with ground stopper droppers. Wt., packed, 10 lbs.
35K5086—Satin Finish Rose Pink Set.....\$2.50
35K5087—Satin Finish Green Set.....2.50



Large 10-Inch Footed Orange or Fruit Bowl. Rose pink or emerald green colored glass in a brilliant pressed glass design. Around the bowl there are six panels, each showing two cut flowers in silver gray finish. Height, 6 1/2 in. Weight, packed, 10 lbs.
35K6105.....\$1.75



Mayonnaise Dish and Plate With Spoon. Thin pressed glass with rose pink or green color. Rolled edge dish cut with floral spray. Plate has border of cut leaves and stems. One 6 1/2-in. dish, 8-in. plate and ladle. Weight, packed, 4 pounds.
35K6064—Rose Pink.....\$1.45
35K6065—Emerald Green.....1.45



Whipped Cream or Mayonnaise Set. Thin blown rose pink or emerald green colored glass in optic (fluted) design. One 4 1/2-inch dish, 6 1/2-inch plate and glass spoon. Wt., packed, 4 lbs.
35K5102—Rose Pink Set.....88c
35K5103—Emerald Green Set.....88c



Colonial Sugar and Cream Set. Rose pink or emerald green colored glass in satin finish. Height, 2 1/2 in.; width across handles of sugar bowl, 7 1/4 inch.
35K5067—Rose Pink. Per set.....98c
35K5068—Emerald Green. Per set.....98c

Stemware



Rose Pink Cut Stemware. Thin blown rose pink colored glass in a popular optic (fluted) shape and cut with a rambler rose design.
35K5072—Water Goblets. Height, 6 1/2 inches. Weight, packed, 6 pounds. Per set of six.....\$3.00
35K5073—Tall Footed Sherbets. Height, 5 1/2 in. Wt., packed, 5 lbs. Per set of six.....\$2.95
35K5074—Standard Table Tumblers. Height, 4 in. Wt., packed, 4 lbs. Per set of six.....\$2.50
35K5075—Lemonade or Iced Tea Tumblers. Height, 5 1/2 inches. Weight, packed 5 pounds. Per set of six.....\$2.60

Plated Etched Rose Pink Stemware
Thin blown rose pink colored glass, highly polished in an exceptionally delicate optic (fluted) shape. The goblets and tall sherbets have one-piece drawn stems. The table and iced tea tumblers are the new cone shape. The decoration is of fine plate etching, as the illustration shows. Weight, packed, 6 lbs. Per set of six.....\$3.85
35K5077—Tall Footed Sherbets. Ht., 4 in. Wt., packed, 5 lbs. Per set of six.....\$3.80
35K5078—Table Tumblers. Height, 4 1/2 in. Wt., packed, 4 lbs. Per set of six.....\$3.75
35K5079—Lemonade or Iced Tea Tumblers. Height, 5 1/2 inches. Wt., packed, 5 lbs. Per set of six.....\$3.90

Fall Membership Meeting and Educational Program

By Larry Everett

What's your story? Time is running short for you to choose a piece from your collection, bring it to the Fall meeting and tell your fellow Cambridge glass lovers why this piece is special to you. No pressure, you are among friends and we really are interested in the many stories that we will hear.

If you have not yet registered for the meeting you need to act quickly as we need to finalize the number attending by Friday October 5th. Use the registration form below or use the one available on-line at www.cambridgeglass.org

So, plan on spending a very enjoyable meeting among friends at Theos Restaurant on Saturday October 20. The festivities kickoff at 5:00 with Cocktails.

What's your story?



Cocktails beginning at 5:00
Dinner will be served at 5:45
Business Meeting at 6:30
Show and Tell and Program to follow



Registration Form

Meal tickets are \$20.00 per person, and must be ordered in advance. Send in your check with this form (make a copy if you don't want to cut your Crystal Ball) or use the form on the NCC website.

NAME: _____

ADDRESS: _____

CITY: _____

STATE, ZIP _____

E-MAIL _____

Number of tickets for meal _____ x \$20.00 = _____

Number attending the meeting only (no meal) _____

2018 OCTOBER						
Sunday	Monday	Tuesday	Wednesday	Thursday	Friday	Saturday
					1	2
3	4	5	6	7	8	9
10	11	12	13	14	15	16
17	18	19	20	21	22	23
24	25	26	27	28	29	30
31						

Make check payable to: NCC
Mail to: NCC, PO Box 416, Cambridge, OH, 43725
Registration Deadline: Friday October 5, 2018

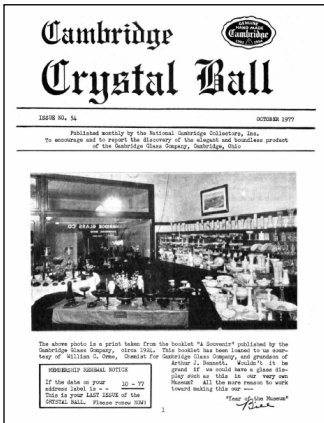
History Repeats Itself!

Cuyahoga County Fair
Middleburg Hts., Ohio

Jack Thompson
August 13, 2018

Sandra L. Bridwell-Walker and I needed to go back to our venue for the upcoming NEO Show at the Cuyahoga County Fairgrounds to do some additional measurements, and check out some other logistics. The Cuyahoga County Fair had just concluded. Our venue is the Arts & Craft Building, so naturally that's where all that happens during the fair. The majority of those entries were still displayed, as people were just starting to pick them up along with their ribbons. As we were walking down one aisle, I noticed something familiar. Cambridge glass had won ribbons for different categories. I'm not sure what things meant including the categories, and there was no one around to ask. But it's obviously still considered one of the finest made glass in the land!

August 2018



October 1977

we get letters

We're parents again, this time it's triplets. One is called 1st Prize, one is called 2nd Prize and last is 3rd Prize. We're parents of three ribbons won at the Cuyahoga County Fair.

Steve placed nine pieces in the fair and won 1st place in the Cambridge category with his Flying Lady Nude bowl with enameled gardenias. He also took 2nd place with an amber Melon decanter including six 3 oz. matching tumblers. He took 3rd place in the fair's Ruby category by entering a carmen 6 oz. Tally-Ho punch cup. Needless to say, he's been beaming ever since.

There was other Cambridge also entered in the fair and a three toed crown tuscan nut dish walked away with 3rd place in the nut dish category. Another piece was a miniature royal blue gadroon basket which was precious, but which did not take a prize.

We were impressed with the display and I don't mind telling you, I have an "ear-to-ear-grinning" proud husband.

Sue and Steve Horner, Ohio

Congratulations Sue & Steve!! We're proud for you also.

2nd Premium

#647 – 2-Lite Keyhole Candlesticks, Etched Bordero, Gold Band Overlay

1st Premium

#3500 – 6" Comport, Etched Rose Point, Gold Stippled

2nd Premium

#300 – Light Emerald 6" 3-Toed Candy Box & Cover, Gray Cutting

1st Premium

Moonlight Caprice Console Set
#65 – 11" 2-Hld. 4-Ftd. Oval Bowl & #70 – 7" Candlesticks

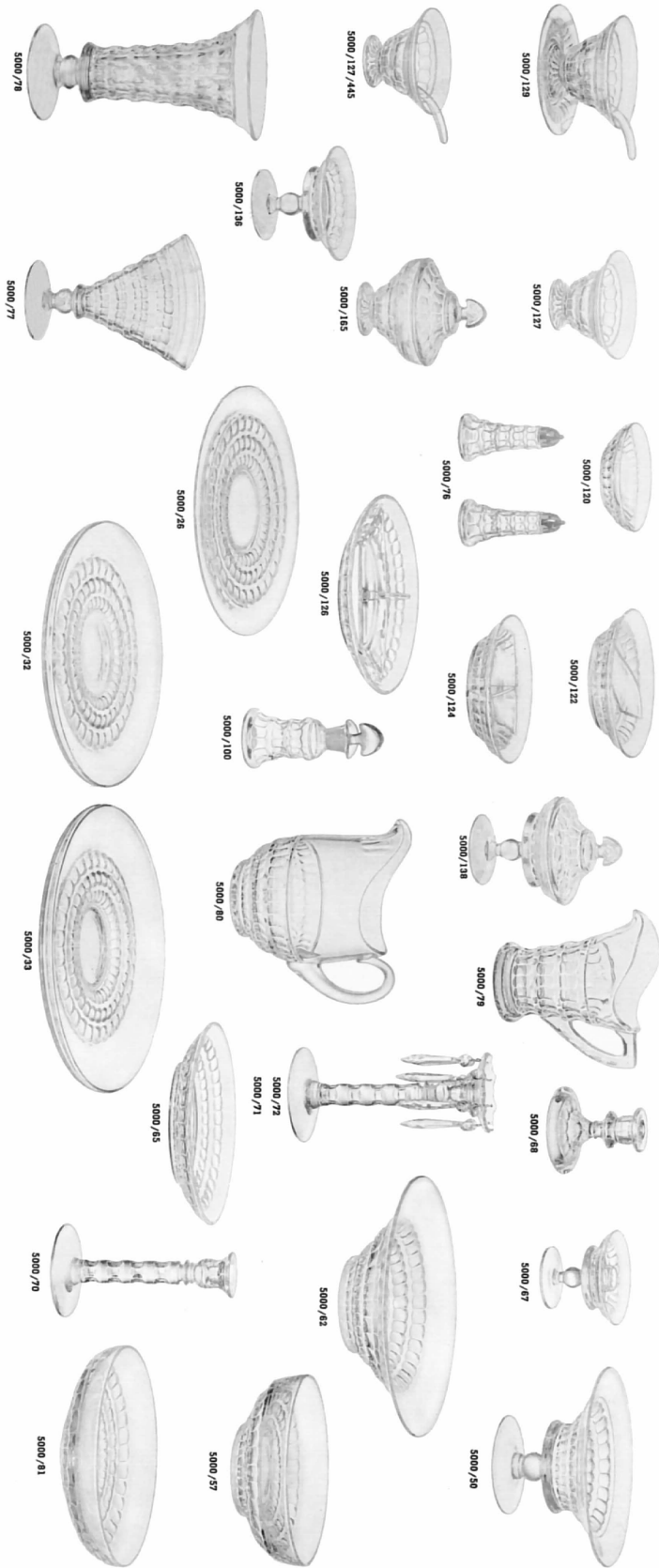
2nd Premium

#518 – Light Emerald Small Draped Lady



Heirloom

Continued from
September 2018



Texas Collectors

Glass collectors in and near to Texas are fortunate to have two major glass shows in August. One show is in Rosenberg, southwest of Houston, and the other is in Grapevine, just north of Dallas. Both shows allow time for NCC members to gather and share discussions. Most recently, members and dealers met Saturday evening at a local Tex-Mex restaurant in Grapevine to relax and enjoy conversation after a full day at the show.



Just some of the items that were seen at the recent Grapevine Metroplex show.

3400/141 80 oz
Jug with Rose
Point label



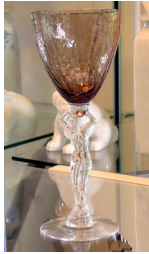
Welcome to the eBay Report. This column features Cambridge glass items that sold on eBay circa mid-August to mid-September. Selling prices have been rounded to the nearest dollar. If no color is mentioned, assume that the piece or part of it being discussed is crystal. Here we go:

Statuesque (Nude Stem) Line

A seller offered, and sold, two 7-3/4 inch wines with Royal Blue bowls at \$65 each.

An ivy ball with Royal Blue top sold for \$400.

A 9 inch table goblet with Smoke bowl and crackle finish wafted away for \$795.



Rose Point

Last month I reported a pair of #497 Martha candelabrum that sold for \$123. Shortly thereafter, another pair was listed, and sold for \$89. Sometimes patience pays off.



A #485 crescent salad plate sold for \$158, after seller discounted the \$170 asking price by 7%. Seller had 3, and I don't know how many sold at the original price versus the sale price.

One seller doffed his #1704 5 inch hat vase for \$240. A tip of that hat to the new owner.

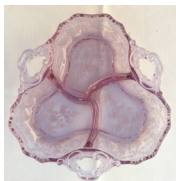


A set consisting of a #1320 cordial decanter and six #7966 cordials sipped away for \$550.

A pair of #1613 candleholders with Mount Vernon style base, and with the flared #1614 hurricane shades, standing 16 inches high, sold for \$1,100.



Etched Tableware and Stemware



A 3400/91 3-part relish in Heatherbloom etched Portia sold for a very reasonable \$51.

Speaking of Heatherbloom, a #3400/4 12 inch 4-toed flared bowl etched Apple Blossom bloomed at \$90.

A #105 62 ounce pitcher etched Marjorie sold for \$150. This beauty stood 11 inches tall, and had a slanted opening and a beautiful lip.



Gold, Silver, and Platinum Decorations

I keep wanting to have a category in this report titled, "Not Cambridge," but my editor tries hard to keep me focused on our favorite glass company. A black vase with a collared neck and a paneled design and a silver deposit decoration was listed as Cambridge and sold for \$100, however it was made by Paden City.



A #3500/42 13 inch covered urn in Crown Tuscan with gold encrusted Portia etching sold quickly for a Buy It Now of \$125. Some minor gold loss was noted.



An... umm... *interesting* pair of #1321 28 ounce decanters with a... *unique* Charleton gold and enamel decoration sold for \$361. It's hard to describe the... err... "abstract" design on these, so I will let the photograph tell the story.

A lovely #1228 Pillow vase in Ebony with platinum encrusted Gloria etching sold for \$855.



Miscellaneous

A Two Kids flower holder in Peach Blo sold for a mere \$50. Another seller offered a Two Kids in Crystal at an opening bid of... ahem... \$10,500. Well guess what? It didn't sell. Shocker!



A hard to find Melon Boy flower holder in Emerald Green sold for only \$175, no doubt owing to the chips on the top edge of the frog portion.

A #119 basket in Azurite with an enamel design of pink roses and green leaves over a black background brought \$135. The decoration was small in scale, and placed in the area around where the handle was applied on each side.



A 3400/141 80 ounce Doulton jug with a Royal Blue handle sold for \$79.

A hard to find 3500/77 footed covered candy was doubly interesting, because it was Peach Blo, a color you don't see a lot in Gadroon. It sold for \$65 to a discerning buyer.



Speaking of Gadroon in color, a #3500/41 10 inch covered urn in seldom-seen Forest Green sold for a reasonable \$95.

A #109 dolphin candleholder with Mt. Vernon base in Ivory with a caramel flashing over it sold for \$100. The seller claimed that this was the rare "Nutmeg" color.



A #109 candleholder in Amethyst brought only \$60. Two months in a row, I report on an Amethyst piece with a fish motif, with the same comment: I can't say as I've seen one of these in that color before.



A #25 10-1/2 inch console bowl in Rubina sold for \$105. It was shaped more like the #677 13 inch bowl with flat rim, also shown on page 4 of the 1927-1929 catalog reprints.

You HAVE bought that catalog from NCC by now, right? If you haven't, please turn in your NCC membership card immediately. (I only nag you to add it to your Cambridge reference library because it depicts many different Cambridge glass shapes that don't appear in the other books.)

A #3400/114 ball pitcher in Ebony with six #3400/112 4-1/4 inch 8 ounce tumblers, set in Farber Brothers chrome holders, on a large round handled chrome tray, sold for \$201.



A Moonlight Blue Caprice #178 Doulton jug sold for \$499, as did a pair of #1357 candelabra epergnes with four Moonlight Blue (not crystal) peg vases.



I don't get to report on the sale of Mardi Gras pieces very often, so I am pleased to report that a Mardi Gras #1A 12 inch vase sold for \$670.

A large Buddha in Emerald Green with screw-on base sold for an impressive \$730. There were chips on the base portion.



The dramatic #1336 18 inch vase etched Diane sold for the opening bid of \$900. Sellers tend to call large vases "wedding" or "funeral" vases. They're like a wedding, because paying for it is a big commitment. They're like a funeral, because when your spouse finds out what you paid for it, you're gonna get killed.



Addenda and Errata

I sincerely appreciate the comments and corrections that members send me... if only because it demonstrates that someone is actually **READING** my column! Seriously, though: I strive for accuracy, but because I am not a Cambridge glass specialist, I do make mistakes. Freeman keeps me in line most of the time, but others definitely help! The following corrections were submitted to me regarding the September eBay report:

-- One reader pointed out that my comparison of the two Rubina comports (at \$151 and \$75) was an apples and oranges type comparison, as the one that sold for less had a poor color range. He noted that the same comport, with good color, sold for \$160 back in January.

-- Regarding the #67 Sea Shell candleholder (the one with the sort of u-shaped fish holding a candle socket on head and tail), I will reprint the reader's comments verbatim, though somewhat condensed: "The Sea Shell price catalog shows they were available in Amber, Royal Blue, Forest Green and Amethyst, as well as crystal and Pearl Mist (or the preferred Moonstone). I have seen them in all but Forest Green. ... Other than Crown Tuscan ones, which show up regularly on eBay, this Amethyst pair is the first ones I've seen on eBay."

-- Another reader wrote to say that the Willow Blue and Light Emerald after dinner cup/saucer sets with Apple Blossom etching are actually the #3400/83, since the saucers are square. However, I got credit for correctly identifying the Portia set as #3400/69.

-- The Firenze vase was a Pristine #1610 6" Rose Bowl. The measurements on these are diameter rather than height.

-- Turns out that the Ebony footed cologne, supposedly etched Dresden, is not Cambridge at all! Mea culpa. Can anyone tell us whodunit?

That's all for now. If you see any interesting Cambridge glass on eBay that you think I should be watching or reporting on, or if you have any other input, feel free to contact me at LAGlass@pacbell.net. Until next month, happy Cambridge hunting!

For Sale - NCC Books and DVD

Published by NCC • Members receive a 10% discount

TITLE		REGULAR PRICE	MEMBER PRICE
1910 NearCut Catalog Reprint	108 pages, paperback, no price guide	\$14.95	\$13.45
1927-29 Catalog Reprint	66 pages, paperback, no price guide, includes identification guide	\$9.95	\$8.95
1930-34 Catalog Reprint	250 pages, paperback with 2000 price guide	\$14.95	\$13.45
1930-34 Catalog Index	Index for above	\$2.00	\$1.80
1949-53 Catalog Reprint	300 pages, paperback, no price guide	\$19.95	\$17.95
Cambridge Colors II (New)	Hardcover with price guide	\$19.95	\$17.95
Cambridge Rose Point – A Collector’s Guide		\$29.99	\$27.00
Caprice	200 pages, paperback, no price guide	\$19.95	\$17.95
Decorates	136 pages, paperback, no price guide	\$14.95	\$13.45
Etchings (2nd Edition)	102 pages, paperback, no price guide	\$17.95	\$16.15
Etchings, Non-Catalogued	70 pages, paperback, no price guide	\$12.95	\$11.65
Etchings: Blossomtime	26 pages, paperback, no price guide	\$7.95	\$7.15
Etchings: Candlelight	30 pages, paperback, no price guide	\$7.95	\$7.15
Etchings: Chantilly	44 pages, paperback, no price guide	\$7.95	\$7.15
Etchings: Diane	53 pages, paperback, no price guide	\$7.95	\$7.15
Etchings: Elaine	64 pages, paperback, no price guide	\$9.95	\$8.95
Etchings: Portia	57 pages, paperback, no price guide	\$7.95	\$7.15
Etchings: Wildflower	42 pages, paperback, no price guide	\$7.95	\$7.15
Rock Crystal Engravings	119 pages, paperback, no price guide	\$17.95	\$16.15
Rock Crystal Engravings (Listings)	Companion to above; lists all pieces in all patterns	\$9.95	\$8.95
Rock Crystal 1940 Illustrated Catalog & Price List		\$14.95	\$13.45
Rose Point - Second Edition	146 pages, paperback, no price guide	\$19.95	\$17.95
Pharmaceutical Catalog No.8 1915-1920 Reprint	68 pages, paperback, no price guide	\$9.95	\$8.95
Cambridge Arms compendium		\$7.95	\$7.95
1916 General Catalogue		\$13.95	\$13.95
Rose Point Program - DVD (Postage \$3.00)		\$19.95	\$17.95
Caprice Program - DVD (Postage \$3.00)		\$19.95	\$17.95

How to Order by Mail or from the NCC Website

Send orders to:
NCC • PO Box 416 • Cambridge, OH 43725

OHIO RESIDENTS PLEASE ADD 7.25% SALES TAX

SHIPPING:
\$5.00 FOR THE FIRST PUBLICATION
\$1.00 FOR EACH ADDITIONAL ITEM

Please include your name, complete mailing address and your phone number or e-mail address.

Payments by check or Money Order only, payable to NCC

Books may also be purchased on the NCC website,
www.cambridgeglass.org.

Major Credit Cards are only accepted for web purchases.



CLASSIFIEDS

Member Benefit

Each NCC household is allowed one free 20-word classified ad in the Crystal Ball per calendar year as part of their membership. This can be a "For Sale" or "Wanted" type of classified ad. Submit your ad by email to editor@cambridgeglass.org

WANTED: Amber Mount Vernon dinner plates #40.
contact Jeannie_Moore@verizon.net



*Let's Retain and
Recruit new members*

Call for "Bloopers"

You're out shopping and see something that is obviously Cambridge glass. You look closer, and huh??? The tag doesn't match what you know. The dealer has given a wrong description of the item, and you're chuckling. We're not talking a simple mistake of a wrong line number. No, the item has a completely incorrect description. That's an example of a "blooper".

Here's an example:

**Jeanette Pink Milk
3 part relish**



Your challenge: Can we find enough examples to fill a page or two? Let's focus on what you see at shops etc, and not online listings.

Send your pictures to editor@cambridgeglass.org and they'll be consolidated for a further article.

Northeast Ohio Show A full-line glass, china and pottery event

Saturday, October 27, 2018 10am – 5pm
Sunday, October 28, 2018 10am – 4pm

Arts & Crafts Building
Cuyahoga County Fairgrounds
19201 E Bagley Road, Gate 1
Middleburg Heights OH 44130

Featuring 24 of the best glass, pottery and china dealers and highlighting the best glass, china and pottery produced in America

Admission \$6 – good both days
\$1 off with card Under 18 free

www.northeastohioshow.com
neogpcs@gmail.com
817-559-0328



NCC Events

**2018 Fall Meeting
Saturday October 20, 2018**

**2019 NCC Auction
Saturday March 23, 2019**

**2019 NCC Convention
June 26-29, 2019**

Recent Finds



Everglade #1250 6" vase

NCC welcomes the
following new members

Jeremy Zetak

TX

October 5-6, 2018

Heart of America Glass Collectors Vintage Glass Show & Sale
Roger T. Sermon Community Center
Independence, MO
<http://www.hoagc.org>

Glass Shows

October 19-20, 2018

Valley Glasshoppers Glass Fall Show & Sale
1309 Opequon Ave
Winchester, VA 22601
<http://www.valleyglasshoppers.org>

October 20-21, 2018

Depression Era Glass Society of Wisconsin
41st Annual Vintage Glass Show & Sale
1800 South 92nd Street
West Allis, WI 53214
mmbhouck@yahoo.com

October 27-28, 2018

Northeast Ohio Show
A full-line Glass, China and Pottery event
Cuyahoga County Fairgrounds
Middleburg, OH 44130
<http://northeastohioshow.com/>

November 3-4, 2018

Michigan Depression Glass Society
Vintage American-Made Glass Show & Sale
Ford Community and Performing Arts Center
Dearborn, MI 48126
<http://www.Facebook.com/MIDepressionGlass>

November 16-17, 2018

Eastern National Antique Show & Sale
Carlisle Expo Center
Carlisle, PA
<http://easternnationalantiques.com/>

November 10-11, 2018

Tiffin Glass Collectors Artistry in American Glass Annual
Holiday Show and Sale, at Calvert Elementary School
Tiffin, OH 44883
<http://www.tiffinglass.org>

January 26-27, 2019

Jacksonville Antique and Depression Glass Show and Sale
5530 Beach Blvd
Jacksonville, FL
<http://www.depressionglassclubjax.com/>

February 2-3, 2019

South Florida Depression Glass Club
45th Annual Show and Sale
Emma Lou Olson Civic Center
Pompano Beach, FL 33060
<http://www.facebook.com/sfdgc>

DEALER DIRECTORY

Dealer Directory - \$24 for 12-months, size limited by box (see below). Includes listing on NCC website.


Advertising Rates:

1/8 page \$15 1/4 page \$20
1/2 page \$30 Full page \$50

Electronic submissions should be emailed to:

editor@cambridgeglass.org

Use Word. Mailed submissions and all payments should go to PO Box 416, Cambridge, OH 43725. Deadline is 10th of preceding month. Ads must be paid in advance. Show listings are FREE; send info to PO Box or e-mail address 60 days before event.



Connecting Buyers & Sellers!
Tell us what you are looking for and we help find it.
CAMBRIDGE GLASS.US
P. Snyder 740-601-6018
E-Mail and Find Your Glass!
psnyder@cambridgeglass.us
www.cambridgeglass.us

E-Blast
When you are searching for Cambridge glass, email your request and it is emailed to all members and dealers.
P. Snyder, 1500 Edgewood Dr., Circleville, Ohio 43113

Your ad could be here.

Cheshire Cat Antiques
Specializing in elegant depression to mid-century era glass and vintage kitchen glass.

Pull up a Mouse! Shop 24 hrs a day at cheshirecatantiques.com



Francee Boches > 305-884-0335
fboches@cheshirecatantiques.com

Cherished Collectibles
Shopping 24 hours in our online store Glassware, Figurines, Collectors' Plates

www.cherishedcollectibles.com
Elegant and Depression Era Glass

Heirloom Glass Antiques & Gifts
Large Selection Of Cambridge
13411 Columbia Hwy.
Lynnville, TN 38472
www.heirloomglass.net 931-446-5492
juanita@heirloomglass.net

Edward Sawicki
Memories Antiques
"Glass is our Passion"
Candlesticks and stemware our Specialty."

PO Box 153 646-522-1506
Dunnellen, NJ 08812 ejawicki@optonline.net

CRYSTAL LADY
1817 Vinton St. Omaha, NE 68108
Bill, Joann and Marcie Hagerty
402-699-0422

Specializing in Elegant Glass & Collectibles
www.crystalladyantiques.com

Glen & Carolyn Robinson
White Rose Antiques
Specializing in Depression Era Glassware

2454 McFarland Road
York, SC 29745

803-684-5685
gandcrobinson@aol.com
whiteroseglassware.com

CRYSTALLINE COLORS
Cambridge • Fostoria • Elegant Glass
Penny Court Mall, Cambridge - 2 booths
Medina Antique Mall
Medina, OH (I-71, exit 218)

Lynne R. Franks 216-661-7382

GLASS FROM THE PAST
Maureen Gillis



www.glassfromthepast1.com
email: maureen@glassfromthepast1.com

ID'ing Glassware
Identification Service
Antique & Collectible

Clear photos and any pertinent details
email: IDingGlass@yahoo.com
www.IDingGlass.com

\$ 10.00 per each Glass Identification
Accepting payments thru Paypal.com

TWEAK COLLECTIBLES
Specializing in Elegant Glass
BUY & SELL
WANTED: CAMBRIDGE TURKEYS
417-742-3653
btummons@aol.com

Virtualattic At The Glass Chalet
Specializing in
Elegant Depression Era Glass

Sandra L. Bridwell-Walker

PO Box 726
Newcomerstown OH 43832-0726
817-559-0328
virtualattic7@gmail.com theglasschalet@gmail.com

Max Miller
Elegant American Glassware
www.maxmillerantiques.com

The Market Place
10910 Katy Freeway. 713-410-4780
Houston TX 77043 mmxglass@aol.com

Ohio Valley Antique Mall
7285 Dixie Highway (Route 4)
Fairfield, OH 45014
Cincinnati's Largest Multi-Dealer Antique Mall
Hours: DAILY 9:00 a.m. - 9:00 p.m.

513-874-7855
www.ohiovalleyantiquemall.com
cfaxon@ohiovalleyantiques.com

Be sure to tell dealers that you saw their ad here.

ISAACS ANTIQUES
(740) 826-4015

located in
Penny Court Mall
637 Wheeling Ave
Cambridge, OH

BAKER FAMILY MUSEUM
805 CUMBERLAND ST.
CALDWELL, OHIO 43724
740-732-6410

bakermuseumnellbaker@msn.com
Wed & Thurs 9-4; Fri - Sat 9-5

MARGARET LANE ANTIQUES
2 E. Main St. New Concord, OH 43762
Lynn Welker (740) 826-7414

Cambridge Glass Matching Service
Hours: Mon-Fri 10-12 AM, 1-5 PM
or by appointment

Our House Antiques
Linda and David Adams
Las Vegas, NV
1-800-357-7169




www.OurHouseAntiques.com
email: David@OurHouseAntiques.com

National Cambridge Collectors, Inc.
PO Box 416
Cambridge OH 43725
email: editor@cambridgeglass.org
website: www.cambridgeglass.org



Friends of Cambridge – Annual Fund

NCC exists through member giving using an Annual Fund system to raise operating funds and to ensure the preservation of Cambridge glass for future enthusiasts. The Annual Fund uses a common member "renewal" date and NCC sends out Annual Fund materials to everyone once a year. There are no monthly reminders or monthly renewal dates. The Annual Fund is NCC's primary means of support and all Annual Fund gift recognition levels are per household and include membership for all adults within the household. Additionally, each household will receive a subscription to the Crystal Ball newsletter, unlimited admissions to the museum, and rights to vote in elections for the Board of Directors. Multiple households at the same address are welcomed. NCC is a 501(c)(3) organization and Annual Fund gifts are allowed as a tax deduction under Section 170 of the Internal Revenue Code.

Thank you!

Levels of Membership

Patron	\$35
Benefactor - Century	\$100
Benefactor - Mardi Gras	\$200
Benefactor - Japonica	\$500
President's Circle	\$1,000

President's Circle includes Convention registration for two members in the household and one copy of any new NCC publications.

The National Museum of Cambridge Glass

**Holiday Hours
Friday and Saturday
Noon to 4:00 pm
November 2 - December 15**

