



# Cambridge Crystal Ball

Published by the National Cambridge Collectors, Inc. as a resource which informs, invites and inspires people to encourage the continued preservation of the glass produced by the Cambridge Glass Company of Cambridge, Ohio for future generations.

Issue No. 505

ISSN 2474-5987

February 2017

## IT'S AUCTION TIME - Place Your Bids!

by Bev & Will Acord

The time is almost here! Have you made your travel plans and booked the hotel? Have you been out to the website <http://www.cambridgeglass.org> to see the highlights of the 2017 NCC Benefit auction or take a peek of the individual photos provided by David Rankin and the Miami Valley Study Group? As always, they did a fantastic job providing the photographs along with the description of each item.

A big "thanks" to this year's auction consignors. They made our job easier by providing information in a structured spreadsheet format which facilitated our organizing the information, and responding by email.

Lot numbers were assigned when items were photographed. Items were then packed in sequential order. The items will be arranged on the tables in numerical order to coincide with the auction list. This worked well last year, and we'll continue the approach this year. In past auctions, the items were grouped by colors and etchings. It was a sign to behold. Cambridge glass though, no matter how it is displayed is a stunning sight. Having items displayed in sequential order should allow you to locate that special piece you plan to bid on and estimate the time that piece may come up for bid.

Of course, you should bid early and bid high enough to ensure you get that special piece. **Make sure your mail in bids arrive by March 2, 2017.**

We have a few corrections to the listing printed in the January *Crystal Ball*:

Lot 165: Should be #7801, not 3109

Lot 166: Should be #454, not 485

Lot 183: Should be #3900/17, not 3600/17

The pictures on the web are correct.

See you there!



### Special Museum Hours

Friday, March 3 11:00am – 4:00 pm

Saturday, March 3 from Noon – 4:00 pm.

We hope to see you during the auction weekend!

### What's Inside

It's Auction Time - Place Your Bids . . . . .	1
President's Message . . . . .	3
Fall Membership Meeting Minutes. . . . .	5
Museum Recognized at the Ohio Statehouse . .	6
Work Begins for the 2017 Season. . . . .	6
Sweet Potato Vases . . . . .	8
Convention 2017: That was Fun, Do It Again? . .	9
NCC Benefit Auction Photo Preview . . . . .	10
Special Cambridge Friends Table Setting. . . .	14
1402/105 Comport Identified . . . . .	15
eBay Report . . . . .	16
Only Questions - No Answers. . . . .	18

# National Cambridge Collectors, Inc.

PO Box 416 Cambridge, OH 43725-0416

## Board of Directors

	2017	
Ken Filippini	Millie Loucks	Freeman Moore
	2018	
Julie Buffenbarger	Doug Ingraham	David Ray
	2019	
Rick Jones	Lindy Thaxton	Lynn Welker
	2020	
Cindy Arent	Larry Everett	Sharon Miller

## Officers

President	David Ray
Vice-President	Doug Ingraham
Secretary	Sharon Miller
Treasurer	Millie Loucks
Sergeant-at-Arms	Larry Everett

Director of Strategic Planning	Ken Filippini
Director of Human Resources	David Ray
Chair, Endowment Committee	Doug Ingraham

## Member Services

### Vice President

Member Relations  
Convention  
Digital Media  
Glass Dash  
Glass Show  
Study Groups  
Webmaster

Rick Jones  
Freeman Moore - Membership Database  
Rick Jones - Convention Director  
Alex Citron - Manager of Facebook Operations  
Larry Everett & Frank Wollenhaupt  
Sandra Bridwell-Walker  
Jeannie Moore - Study Group Coordinator  
David Adams

## Development

### Vice President

Campaigns  
  
Events  
  
Projects  
Publicity

Julie Buffenbarger  
Ken & Jane Filippini - Annual Fund Directors  
Larry Everett - Director of the Heritage Society  
Will & Bev Acord - Auction Managers  
Lynn Welker - Auction Manager  
Carl Beynon - Jeweler & Scotties Project Manager  
Jonathan Fuhrman

## Education

### Vice President

Crystal Ball  
Publications  
Media Productions  
Research  
Programming

Larry Everett  
Freeman Moore - Executive Editor  
Mark Nye - Director of Publications  
Dave Rankin - Director of Media Productions  
Mark Nye - Archivist  
Greg Vass - Director of Programming

## Museum

### Vice President

Public Operations  
  
Facilities & Grounds  
Collections  
Merchandise Sales  
  
NCC History  
Community Relations

Cindy Arent  
Sandra Bridwell-Walker - Docent  
Julie Davey - Docent  
Sandy Rohrbough - Docent  
Betty Sivard - Docent  
Gary Wiseman - Docent  
Carl Beynon - Director of Facilities  
Lynn Welker - Director of Collections  
Lynn Welker - Gift Shop Manager  
Cindy Arent - Gift Shop Manager  
Mark Nye - Archivist  
Cindy Arent

## Administration

### Vice President

Accounting & Finance  
Information Technology

Ken Filippini  
Lisa Neilson - Office Manager  
(vacant)

## ADDRESS CHANGES

Please send address changes to:  
Membership - NCC  
PO Box 416  
Cambridge, OH 43725-0416  
or by e-mail to:  
[membership@cambridgeglass.org](mailto:membership@cambridgeglass.org)



## CONTACT US

136 South 9th Street  
Phone: 740 432-4245  
[nccglass@yahoo.com](mailto:nccglass@yahoo.com)



David Ray, President  
e-mail: [westervillesh@hotmail.com](mailto:westervillesh@hotmail.com)  
Sharon Miller, Secretary  
e-mail: [secretary@cambridgeglass.org](mailto:secretary@cambridgeglass.org)

## Heritage Society

*Ensuring the preservation mission of the NCC through planned giving and estate bequests.*

Members of The Heritage Society are those who have included the NCC in their wills or estate plans, thus providing the organization with a secure future.

The mission of The Heritage Society is to foster smart estate planning and to assure that NCC is not forgotten as an important beneficiary. Any pledge is meaningful and appreciated.

All Cambridge collectors - both current and future - will benefit from, and be grateful for your support.

Let us know how we can help with your future plans.

NCC Website: [www.CambridgeGlass.org](http://www.CambridgeGlass.org)

Miami Valley Study Group Website: [www.mvsg.org](http://www.mvsg.org)



## PRESIDENT'S MESSAGE

### *The Joy of Collecting*

Although I have collected Cambridge glass for nearly 30 years, I still enjoy shopping flea markets and antique shops throughout the country searching for unique pieces of glass for my collection. Every collector dreams of finding rare and expensive pieces, but I mostly enjoy finding pieces that generate interesting conversations and cause collectors to question their current knowledge of Cambridge glass. Recently, I was fortunate to find one of these pieces. A few weeks prior to Christmas I embarked on a routine glass shopping trip through north eastern Ohio. During the shopping trip, I encountered a small set of Heisey Sahara. To my surprise, the set included a single piece of Cambridge glass, a yellow 1066 water goblet. After close inspection, I realized this was not a typical yellow 1066 goblet. First, the goblet possessed a yellow stem and foot. Second, the goblet was decorated with the Rosalie etching. Having some knowledge of the production years of Cambridge colors and etchings, I struggled to understand how this piece could exist. Cambridge did produce 1066 goblets in solid yellow, but that did not occur until the introduction of

Mandarin Gold. The Rosalie etching was introduced in the 1920's and is typically found on Decagon blanks. The combination of a solid yellow stem and the Rosalie etching did not seem possible. Immediately, questions began flooding my mind. Could the goblet be Gold Krystal? Could Cambridge have produced solid-color 1066 stems prior to the 1950's? Is this piece a salesman's sample or a special order? I needed to do some research!

The 1066 line was introduced in 1931 and the production colors included Gold Krystal. The Rosalie etching was introduced in 1927 and was discontinued in the mid-1930's. Therefore, it is very possible that 1066 stems could have been decorated with the Rosalie etching. Although it is possible, this is the first example I have seen. What about the yellow stem and foot? Records indicate that all 1066 stems produced in the 1930's possessed a crystal stem and foot. During the 1950's, Cambridge produced 1066 stems in two solid colors: Mandarin Gold and Moonlight. Could this stem be Mandarin Gold? After comparing the stem to items known to be Mandarin Gold and Gold Krystal, I strongly feel the stem in Gold Krystal. Although we may never know for certain, I assume this stem is a salesman's sample or a special order. The discovery of this goblet further strengthens the argument that, "Anything is possible with the Cambridge Glass Company." Good luck on your glass shopping adventures. You never know what you may find.



Over the years, many pieces of Cambridge glass have been found that caused collectors to say, 'I would have never expected to see that' or 'That item is not pictured in any of the Cambridge catalogs.' Finding unique pieces of Cambridge glass helps NCC build a more complete history of the glassware produced by the Cambridge Glass Company. By sharing our discoveries and exchanging ideas, collectors can broaden their own knowledge as well as increase the knowledge of others. If you have the good fortune of finding a unique piece of Cambridge glass, snap a photo and email it to our Crystal Ball editor ([editor@cambridgeglass.org](mailto:editor@cambridgeglass.org)) so fellow Cambridge glass collectors can learn from your success.

The annual March Benefit Auction is quickly approaching. The Auction Committee provided a complete catalog

listing in the January issue of the Crystal Ball. To obtain a more complete description, you can view individual photographs of each auction item through the NCC website. Several rare and beautiful pieces of Cambridge glass will be available for purchase at this year's auction. Some of my favorites items include the Heatherbloom tall keyhole comport etched Lorna, the Carmen Flying Lady bowl, the Royal Blue nude cigarette holder, the crystal nude cigarette box etched Diane, the Amber rooster muddler, the green enameled decanter, the set of crystal 2 oz. handled mugs etched Portia, the crystal Pristine Table Architecture candlesticks, and the Amber eagle flower frog. If you are not able to attend this year's auction, you can submit absentee bids for one or many items. Directions for submitting an absentee bid can be found on pg. 8 of the January issue of the Crystal Ball. Absentee bids must be received by Thursday, March 2. Good luck to all auction bidders.

The Comfort Inn in Cambridge is offering NCC members room rates starting at \$79 per night. When making your reservation, let the desk clerk know you are part of the National Cambridge Collectors to secure the discounted rate.

*David*

David Ray  
[westervillesh@hotmail.com](mailto:westervillesh@hotmail.com)

## Auction Weekend Add-on

The same weekend as the NCC Auction is the Three Rivers Depression Glass Show. Many NCC members head over to the Pittsburgh area after the Auction to shop the glass show on Sunday. If this holds interest for you, we suggest staying at the Quality Inn in New Kensington, which is also the location of the Show. Be sure to mention you are with the Three Rivers Depression Glass Show and you will get a group rate of \$70/night, about \$20 off their best AAA rate.

Many NCC members will be meeting for dinner that Saturday night. If interested, reach out to Rick Jones at [Caprice0@aol.com](mailto:Caprice0@aol.com). For Auction attendees who fly in, we suggest using the Pittsburgh airport instead of Columbus if the glass show holds interest for you.

## Lunch Option for Auction Attendees

**Back by popular demand** are Theo's scrumptious boxed lunches, delivered right to PLCC in time for the lunch break. So if you don't want to hassle running out to get something and/or want a nice healthy alternative to fast food, we've got it for you. Tax and gratuity are all included in the purchase price.

**Ordering:** A Theo's representative will be in the PLCC lobby from 8:30 AM to 9:30 AM on Saturday, day of the auction, to take everyone's orders. You must have cash or check and pay at time of order. They will not be able to take credit cards. Fill out an order form when you arrive Saturday morning.

### Prepared Boxed Meals:

#### **Sandwiches: \$10.00**

*All sandwich boxed meals include choice of broccoli raisin salad or pasta salad, chips, cookie and one bottled water or can of soda.. Mustard, Mayo & Horseradish sauce will be available. Served on the side.*

#### **Roast Beef & Cheddar:**

on Cracked Black Pepper Bread with lettuce, tomato

#### **Chicken Salad Croissant:**

with lettuce and tomato

#### **Ham & Swiss on Wheat:**

with lettuce, tomato

#### **Turkey, Bacon, & Mozzarella:**

Whole Wheat with lettuce, tomato

#### **Salads: \$10.00**

*All salad boxed meals come with dinner roll or homemade French bread, cookie and one bottled water or can of soda.*

#### **Chicken Caesar Salad:**

mixed greens w/Caesar dressing, parmesan cheese, kalamata olives, pepperoncinis, and grilled breast of marinated chicken.

#### **Greek Salad – our signature salad:**

mixed greens w/grilled chicken, onions, tomatoes, cucumbers, marinated mushrooms, feta, kalamata, olives, pepperoncinis, croutons and our Greek inaignrette.

#### **Smoked Turkey & Mixed Nut Salad:**

mixed greens with smoked turkey, mixed nuts, raisins, shredded mozzarella, tomatoes, cucumbers, onions with choice of dressing.

#### **Additions:**

Cup of Soup: \$3.00  
 Side Salad w/choice of dressing: \$3.00

[www.theosrestaurant.us](http://www.theosrestaurant.us)

# NATIONAL CAMBRIDGE COLLECTORS, INC.

## Fall Membership Meeting – October 15, 2016

President David Ray called the Fall Membership meeting of the National Cambridge Collectors, Inc. to order at Theo's Restaurant in Cambridge Ohio.

David asked if there were any additions or corrections to the minutes from the June 2016 membership meeting. A motion was made by Larry Everett and seconded by Frank Wollenhaupt to approve the minutes as published in the September issue of the *Crystal Ball*. The motion passed.

### **Reports:**

In the absence of the Treasurer, David gave the report for Millie Loucks. The property loan was re-negotiated thanks to a generous offer by a member that will save the organization many dollars. The loan on the property was paid down using \$60,000 from a gift bequeathed by Patty Rutledge who passed away in June 2016. In addition, \$100,000 from the PNC CD plus an additional \$25,000 from the operating fund was transferred to the Endowment Fund and will be invested gradually over the next few months.

David reported that Julie Buffenbarger has been appointed to the position of Vice President of Development. Other vice president reports were given. Larry Everett reported that the new Rose Point book is selling well. Also, the yellow house has been great for the storage of auction glass and the museum gift shop inventory.

Freeman Moore reported for Member Services. There are currently 820 members from 537 households. Membership renewals are down slightly from last year. To date, the Annual Fund has generated \$42,424. Freeman reported that over 100 people receive the *Crystal Ball* by email. Freeman reminded members they can get the *Crystal Ball* by email in addition to receiving the print version, thus benefiting from the enhancement of color photographs. Freeman also asked members to send in pictures of recent finds, articles, etc.

Cindy Arent reported that the dining room this coming year will be done in Rose Point and will feature the new Rose Point punch bowl donation. Cindy also reported that the roof work on the museum will be done soon.

**Old Business:** none

**New Business:** none

David opened the floor for comments. Bev and Will Accord reported that the auction glass has been received and cataloged.

A motion was made by Bev Accord and seconded by Jeannie Moore to adjourn the Fall Membership meeting. Motion was passed

Respectfully submitted,  
Sharon Miller

## Museum Recognized at the Ohio Statehouse

By Cindy Arent

The National Museum of Cambridge Glass was recognized at the 6<sup>th</sup> Annual Appalachia Heritage Success Stories luncheon held at the Ohio Statehouse on December 14. Nominated by Donna Hill, Director of Cambridge Main Street, the National Museum of Cambridge Glass was one of 11 attractions and businesses chosen for the event by Heritage Ohio.

David Ray and Cindy Arent attended the event accompanied by Donna Hill, Jonett Haberfield and Debbie Robinson, Director of the Cambridge/Guernsey County VCB. Representative Brian Hill introduced Cindy Arent and stated, "Today the National Museum of Cambridge Glass once again stands as an incredible symbol of Cambridge history. It houses a superb collection of Cambridge glassware produced by The Cambridge Glass Company from 1902 to 1958. The original museum was destroyed by the massive flood of 1998 but thanks to the hard work of many, most of the glass was rescued, but the original museum had to be closed and eventually sold. Subsequently, club members got together and raised the necessary funds to acquire the current building in Cambridge." A plaque was awarded by Heritage Ohio and is now on display at the museum.



Shown at the Heritage Ohio Success Stories luncheon are (L – R): Senator Troy Balderson; Donna Hill, Cambridge Main Street executive director; Cindy Arent, National Museum of Cambridge Glass; Representative Brian Hill; and Debbie Robinson, Visitors and Convention Bureau executive director.

## Work Begins for the 2017 Season

By Cindy Arent

A volunteer appreciation dinner was held on December 19, the day after the museum officially closed for the season. These volunteers meet visitors and motorcoach groups throughout the year, and always with enthusiasm and a smile. Many thanks to everyone for helping the museum be the best it can be!

New for the 2017 season will be the group tour option Time Travelers. This program was developed last summer and plans for offering new museum experiences were created. On January 19, a group of tour operators from the American Bus Association convention in Cleveland will be visiting the museum as part of their three day FAM tour of attractions in Tuscarawas, Guernsey and Muskingum Counties. Every effort is being made to set up the new Time Travelers kitchen display in The Edna McManus Shepard Education Center. We want to give the VIP's a good idea of what they can expect if they bring a bus to the museum for each of our feature tours. Volunteers will be dressed to represent each of our group tour packages and guests will receive a folder containing three museum profile sheets, rack cards, contact information and "something fun" directly related to Time Travelers.

NCC will again be applying for the Grant Assistance Program through the Cambridge/Guernsey County Visitors & Convention Bureau. If received, the grant will provide advertising opportunities for the Museum, Glass Show and Auction. The grant must be submitted by February 15 and recipients will be informed March 30.

Museum maintenance projects are on the list for this winter. During the past two years, different sections of the museum have been painted. In early January, the front display area and Sample Room were painted, so the museum interior is now finished.



Museum volunteers gathered in December at the close of the holiday season to celebrate another successful year. Left – Right:  
 Row 1 (seated) Susan Everett, Cindy Arent, Mr. Bennett, Rich Bennett and Carl Beynon.  
 Row 2: Betty Sivard, Julie Davey, Sharon Miller, Shirley Beynon, Sally Slattery, Lindy Thaxton, Sandi Rohrbough and Reggie Gerko.  
 Row 3: Bev Kerr, Jeff Ross, Joe Miller, Sharon Bachna, Betty Davis, Tom Davey, Diana McMahon and Larry Everett.



The new display in the museum's Edna McManus Shepard Education Center coincides with our new program, *Time Travelers*. The display features a glassworker and his wife in their family kitchen.

Shown on the wall is a Cambridge Sweet Potato Vase in the original holder.

# SWEET POTATO VASES



**PRICE LIST**  
(Glass Vase Only)

	Amber	Amethyst	Royal Blue	Forest Green	Carmen
	Per Doz.	Per Doz.	Per Doz.	Per Doz.	Per Doz.
Gross Lots	4.40	8.40			
6 doz. lots	4.90	9.40			
1 doz. lots	5.40	10.40			

No package charge.  
F. O. B. Cambridge, Ohio

**BEAUTIFUL RICH GREEN FOLIAGE**  
in the Home may be had by the ordinary  
**SWEET POTATO**  
... PRACTICAL ...  
... INEXPENSIVE ...

**INSTRUCTIONS FOR GROWING SWEET POTATO VINE**

Cut Sweet Potato at one end to fit top rim of Vase. Fill vase with water, covering half of the potato and keep at this height. Put near window so potato will get plenty of sunlight or daylight, in two or three weeks you will grow a Sweet Potato Vine like the illustration, that will last for months.

These beautiful vines are more desirable than ivy, as the foliage is equally attractive and grows in much less time and is much less expensive.

GENUINE HAND MADE  
**Cambridge**  
TRADE MARK  
MADE IN U.S.A.

— FURNISHED IN —

Forest Green . . . Ruby  
Amethyst . . . Royal Blue



A Display Card in Colors, a duplicate of this circular, but without prices, is furnished for counter display, and a duplicate of this circular without prices, which gives instructions for growing, is placed in each vase when shipped.

**BEAUTIFUL RICH GREEN FOLIAGE**  
in the Home may be had by the ordinary  
**SWEET POTATO**

...PRACTICAL...  
...INEXPENSIVE...

### INSTRUCTIONS FOR GROWING SWEET POTATO VINE

Cut Sweet Potato at one end to fit the top rim of the Vase. Fill the vase with water, covering half of the potato and keep at this height. Put near window so potato will get plenty of sunlight or daylight, in two or three weeks you will grow a Sweet Potato Vine like the illustration, which will last for months.

These beautiful vines are more desirable than ivy, as the foliage is equally attractive and grows in much less time and is much less expensive.

This Cambridge Glass Company circular was provided to stores that sold their Sweet Potato Vases. It even gives directions on how to grow your own Sweet Potato Vine in a Cambridge vase. This item was produced in Amethyst, Amber, Royal Blue, Forest Green and Carmen. We will have the directions available for visitors, all they will need is a Cambridge Sweet Potato Vase and a sweet potato!



#1330 Sweet Potato Vase



# That was Fun, Do It Again?

By Rick Jones

We have had the most amazing feedback on the 2016 Convention – *HOLLYWOOD!* Spirits ran high and members enjoyed the blend of social activities, educational programs and a jam-packed Glass Show (and Dash) filled with high quality national dealers. Each element added to the whole and we appreciate the enthusiasm and talent of the score of folks who helped make the weekend successful.

What do you say? Want to do it again? I know I do!

As announced at our Wrap Party on Saturday night last year, our 2017 theme is *ANIMAL HOUSE*. While certainly not as bawdy as the namesake movie, our Convention will look at animals of all types – glassware ones and real ones. Not only will we salute the animals in Cambridge Glass, we will look at how popular animals were across the whole elegant glass spectrum.

Just think about some of the animals in Cambridge: bunny (boxes), dolphins, swans, geese, cat and dog bottles, Scottie dogs, pouter pigeons, eagles, herons, butterflies, lions, Three Canny Scots, peacocks, bulldogs (Yale), tigers (Princeton), badgers (Wisconsin), bears (California), horses and even, gazelles. I bet you can name a bunch more.

We are still putting finishing touches on this year's program and we look forward to telling you more about it in the coming months' *Crystal Ball* and on our NCC website. A couple of teaser highlights:

- A dolphin candlestick program by noted NCC member Zak McCamey
- Custom tour of The Wilds, a fabulous creation of the Columbus Zoo (and their famous Director Emeritus Jack Hanna) likely led by one of NCC's own. The Wilds is in Cumberland OH, just 21 miles from our National Museum of Cambridge Glass.

Now would be a great time to reserve time on your calendar to be in Cambridge from Wednesday June 21 until Saturday the 24<sup>th</sup> (likely heading home on Sunday). We are targeting Wednesday about 1-1:30 pm for

The Wilds tour). Also, it's never too early to book your favorite hotel to guarantee a room. As David mentions in his column this month, the Comfort Inn is again offering their \$79 a night rate. Sandy Bridwell-Walker is talking to more hotels and as we have new deals, they will be posted on the website and subsequent *Crystal Balls*.

JUNE 2017						
SUNDAY	MONDAY	TUESDAY	WEDNESDAY	THURSDAY	FRIDAY	SATURDAY
				1	2	3
4	5	6	7	8	9	10
11	12	13	14	15	16	17
18	19	20	21	22	23	24
25	26	27	28	29	30	

Sandy is also our Glass Show Director and is deep into 2017 planning. From what I'm seeing, it looks to be an even more spectacular show this year!

So mark your calendars and stay tune for more details on our exiting 2017 Convention – *ANIMAL HOUSE*.



*A Preview of some of the spectacular glass offered in this year's NCC Benefit Auction - March 4, 2017  
Go to the NCC website [www.cambridgeglass.org](http://www.cambridgeglass.org) for a link to individual photos*

Refer to the Auction List published in the January issue.

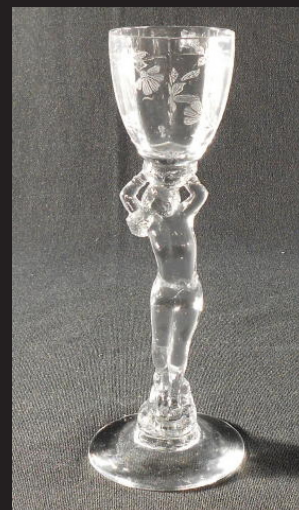


Candlesticks



Vases

Rose Point



*Auction Preview ..... continued*



Forest Green



Figurals



Gold Decorated



*Auction Preview ..... continued*



Statuesque



Jugs



*Auction Preview ..... continued*



# Special Cambridge Friends Call For Spectacular Table Settings!

By: Jonathan Fuhrman

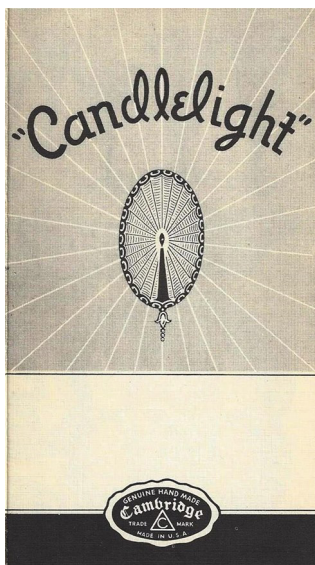
They say that if you haven't worn an article of clothing in a year, you should probably remove that item from your closet. I feel the same way about my glassware! Well, not to the extent of getting rid of it, but I try to use it as often as possible.

I've been collecting the Candlelight etching for about 15 years now. I primarily focus on the regular etching, but I do have a small collection of gold encrusted pieces. While I used to consider this pattern variation to be gaudy, it has grown on me over the years. A recent acquisition of some gold encrusted #3111 stemware meant I now had enough to do a small table setting.

But you don't use gold encrusted Candlelight with just anyone! The guest must meet two criteria. 1) Appreciate the glassware. 2) Be trusted to not break it! Thankfully, I knew just the person to invite – fellow NCC member Jennifer Ganem.

We met up for a post-holiday celebration on December 30. I created a table setting to serve dessert that consisted of a low sherbet on top of a 3400 cobalt lunch plate, accompanied by an iced tea and claret stem. The centerpiece of the table included a 3400/1240 oval bowl, pair of 3400/647 keyhole candlesticks, along with a pair of #628 single candlesticks. Since I didn't want to risk any wax damaging the gold on the candlesticks, I used some battery operated taper candles purchased from the local craft store.

Of course we had a fabulous time! It would be impossible not to with such great company and beautiful glassware. I highly encourage everyone to *use* their glassware – that is what it was made for! Not only should we be able to appreciate it as collectors, but it is also imperative that we expose our friends and family to the craftsmanship of the Cambridge Glass Company so the interest in our beloved collections continues for generations to come.



# #1402/105 Comport Identified

by Jack Thompson

The knowledge of Cambridge glass continues to expand. Little bits of information continue to be added to our existing data base, as facts are sorted out and “smoking guns” are discovered. Large caches of information are probably no longer waiting to be discovered, such as a “lost” catalog, but you never know. For the most part, we must content ourselves with the little discoveries.

Another one seems to have surfaced recently. For years we had this small Tally Ho comport, etched Elaine, in our collection, but we had never been able to identify it. It did not match any known picture or description from any catalog or price list. Although sometimes a piece can be similar to another, except for a rim might be flared vs. cupped, etc., this did not fit that situation at all. Then one day we acquired the #1402/101 – 9” Low Footed Comport with a seat, etched Elaine. We had

the one without a seat for some time, but the one with a seat goes with the large Tally Ho plate for the buffet supper set.

Whenever I acquire a new piece, I always like to check out mvsg.org for the correct description and for any other bits of information which might be pertinent as well as interesting. It is such a wonderful resource for Cambridge glass collectors. When I looked up #1402/101, I noticed something. It is used in the #1402/104 – 14” Cheese & Cracker, and at the bottom of that description it said, “Also #1402/105 - 4 ½” Comport”. Voila! Our previously unidentified comport was the exact same shape, and it measured 4 ½”. This is the only reference to this number and piece known. Thanks to Dave Rankin of Miami Valley Study Group for his help and confirmation.



2017 45<sup>th</sup> Year

## Glass Sale & Show

Sponsored by The 20-30-40 Glass Society of Illinois  
Visit our website at: [20-30-40glassociety.org](http://20-30-40glassociety.org)

Specializing in: *Depression, Elegant, Carnival, Pattern, Quality Art & Victorian Glass, & Pottery*

**Saturday, March 11<sup>th</sup>, 2017 -10am to 5pm**  
**Sunday, March 12<sup>th</sup>, 2017 -11am to 4pm**

**Door Prizes ♦ Crystal Repair ♦ Glass Identification ♦ Reference Library**

Admission: \$8.00 per Person / \$7.00 with this card

Location: **THE CONCORD PLAZA MIDWEST CONFERENCE CENTER**  
401 West Lake Street, Northlake, IL 60164

Free parking and shuttle bus to front door  
For information, call 630-851-4504

NCC welcomes the following new members

John Dressler	NY
Linda Dressler	NY
Frances Meyer	OH

Reciprocal ad

Welcome to the eBay Report. This column features Cambridge glass items that sold on eBay circa December 2016 through early January, 2017... plus some items that sold a little earlier than that. I recently ran a search of sold items, sorted by price – highest to lowest – and that showed me that I had missed seeing many Cambridge glass gems in the latter part of 2016. Selling prices have been rounded to the nearest dollar. Here we go:

### Statuesque (Nude Stem) Line



An ashtray with Gold Krystol bowl sold for \$176. Interestingly, the same seller offered the same piece with an Amber top and one with a Royal Blue top, each of which sold for \$175 -- virtually the same price as the Gold Krystol one.

If you needed a matching covered cigarette box for your Gold Krystol ashtray, it could have been yours for the opening bid of \$275. Again, as with the ashtrays, the same seller offered the same piece with an Amber top and one with a Royal Blue top, and all of them sold for the same price as the Gold Krystol one.



A table goblet in late (1950s) Pink with a crackle finish brought an impressive \$775. A covered cigarette box in Crown Tuscan with etched and gold encrusted Portia etch sold for \$637.

### Animals and Figural items



A large Buddha figurine in Crystal mounted on a metal base sold for \$162.

A Melon Boy flower frog in Emerald Green brought \$342.



A Two-Bun Geisha figure on the low screw-on base in Emerald Green sold for \$850. Interestingly, it shows in my eBay search as sold, but then it says it was relisted, where it sits for an opening bid of \$750 or Best Offer. Hmm. Did seller have TWO of 'em, or did the sale fall through?



A "Flying Lady" flower center bowl in Amethyst sold for \$1,000 on a Buy It Now.



### Etched Tableware and Stemware

A seller offered 5 #3077 footed ice tea tumblers in Emerald Green with Hunt etch at a Buy It Now price of \$40 each. One of them sold at that price, then the rest of them suddenly became unavailable. Mmm-hmm.

A set consisting of an Amber #1084 Decagon 13" two-handled service tray, a Decagon ice bucket, and six tall flat optic tumblers with Golf scene etching was offered for an opening bid of \$495, but failed to sell. The (non-etched) tray had a large chip on the edge, but as the seller pointed out, that's replaceable. The item was relisted, and then – oh my goodness! Suddenly the auction was ended by the seller due to an error in the listing. Mmm-hmm.



A #111 3-1/2 pint jug etched Marjorie sold for the opening bid of \$80, perhaps due to some light scratching.



Speaking of pitchers, a #3400/38 80 ounce ball shape jug in Gold Krystol etched Gloria brought \$191 after much bidding.



A #980 5” covered cheese dish with Rose Point etched on the lid sold for the opening bid of \$330. Ten days later, the identical item was offered by another seller. It went for \$335 in an auction format. I guess we know what the market price of this piece is now.



A rare Rose Point #1670 syrup with metal Dripout top was offered at \$600 Buy It Now or Best Offer. It sold for an undisclosed amount that was less than the BIN price.



A really neat #898 meat platter with a mustard jar resting in the indent at the top of the plate, in Emerald Green, etched #732 Majestic, sold for \$165.

Enamel, Gold and Silver Decorations



A 12” #3500/42 Gadroon covered urn in Crown Tuscan, electrified to make it into a lamp, and gold decorated with “Cambridge Glass” and other gold highlighting on the edges, sold for only \$203. Seller noted an imperfection on the foot, possibly factory. What a deal for a neat Cambridge advertising piece.



A pair of #3400/646 (keyhole with Decagon base) single candleholders in Royal Blue with a gold and satinized floral decoration reminiscent of Apple Blossom sold for \$250.

A #1105 cocktail shaker with metal lid in Ebony with a Rockwell sterling silver decoration of a sailboat sailed away for \$595 on a Buy It Now.



Miscellaneous

A #1402/50 Tally-Ho 74 ounce tankard jug in Forest Green with applied crystal handle, matched with a set of 6 plain tall tumblers, sold for \$85 on a Buy It Now. I wonder why the tumblers weren’t Tally Ho, too?



A #102 6” covered bonbon in Helio opaque sold for \$67. I wouldn’t call this shape rare, but it’s not one I see often.

A #1242 11” vase in Peach Blo etched Minerva brought \$230, despite a shipping quote of \$45. Okay, I know I’m not the only one who gets the Minerva and Valencia etchings confused. Why did Cambridge make two etched patterns which are SO similar? I have to look them up every time to tell them apart. But now that I have my book open, I notice that the “trellis, flowers, and bow” design on Valencia is more of a triangle – or “V” – shape. So just remember this: if the motif is V-shaped, the piece is Valencia; if it’s wider and more oblong shaped, it’s Minerva.

This month’s bid champion was the Royal Blue cocktail shaker with applied crystal handle, set in a Farber Brothers Krome-Kraft holder, which sold in late November for \$1,076.



WHY?? Another seller listed his or hers about two weeks later, same color, for \$800 Buy It Now, and it sold. (One of the underbidders on the first one probably wasted no time pulling the trigger at the lower price.) What am I missing here? Are these THAT hard to find? An Amethyst one brought a “mere” \$275.

That’s all for now. If you see any interesting Cambridge glass on eBay that you think I should be watching or reporting on, or if you have any other input, feel free to contact me at [LAGlass@pacbell.net](mailto:LAGlass@pacbell.net). Until next month, happy Cambridge hunting!





Arkansas Glasshoppers, Inc.  
PRESENTS THE THIRTY-FIRST ANNUAL  
Depression Era & Vintage Glass  
**SHOW and SALE!**  
Pottery & kitchen items of the era.

Hall of Industry -State Fairgrounds

Roosevelt & Howard Streets, Little Rock, AR

Admission includes FREE PARKING!

Saturday, February 25, 2017 9am - 5pm

Sunday, February 26, 2017 11am - 4pm

ADMISSION \$5 - GOOD BOTH DAYS

GLASS IDENTIFICATION – DOOR PRIZES – DISPLAYS

SPECIAL DISPLAY BY JAMES HAYES

SHOW INFORMATION: (501) 868-4969

Find us on facebook

<https://www.facebook.com/pages/Arkansas-Glasshoppers-Inc/115016871880571>

[bgmarglass@sbcglobal.net](mailto:bgmarglass@sbcglobal.net)

[arglasshoppers@aol.com](mailto:arglasshoppers@aol.com)

website: [ARGlasshopper.org](http://ARGlasshopper.org)

## NCC Events

\*\*\*\*\*

**2017 NCC Auction  
Saturday March 4, 2017**

\*\*\*\*\*

**2017 NCC Convention  
June 22-24, 2017**

\*\*\*\*\*

**2017 Fall Meeting  
October 21, 2017**

## *New Member Benefit*

Each NCC household is allowed one free 20-word classified ad in the Crystal Ball per calendar year as part of their membership. This can be a "For Sale" or "Wanted" type of classified ad. Submit your ad by email to [editor@cambridgeglass.org](mailto:editor@cambridgeglass.org)

## CLASSIFIEDS

Waiting for yours!

## *Recent Finds*



#300 7 in. 3-Toed Candy Box & Cover,  
De-Luxe Crystal Celestial 600/25

## Glass Shows

### February 4-5, 2017

American Glass, Pottery, Dinnerware Show  
Emma Lou Olson Civic Center  
Pompano Beach, FL 33060  
<http://www.sfdgc.com>

### February 4-5, 2017

International Depression Glass Club  
China, Glass & Pottery Show & Sale  
McClellan Conference Center  
Sacramento, CA  
<http://www.idgc.org/showcard.php>

### February 17-19, 2017

The Houston Glass Show & The Best Little Antique Show in Texas  
Fort Bend County Fairgrounds  
Rosenberg, TX 77471  
<http://www.maxmillerantiques.com>

### February 25, 2017

Green River Depression Era Glass Club  
40<sup>th</sup> Annual Green River Glass Show & Sale  
Kent, WA  
email: [kayswede@msn.com](mailto:kayswede@msn.com)

### February 25-26, 2017

Arkansas Glasshoppers 31<sup>st</sup> Depression Era Glass Show & Sale  
Hall of Industry - State Fairgrounds  
Little Rock, AR  
<http://www.arglasshoppers.org/>

### March 4-5, 2017

Garden State Depression Glass Show & Sale  
Lakeview School  
Edison, NJ 08817  
email: [jojink169@aol.com](mailto:jojink169@aol.com)

### March 11-12, 2017

20-30-40 Glass Society of Illinois 45<sup>th</sup> Glass Show & Sale  
The Concord Plaza, Midwest Conference Center  
Northlake, Illinois 60164  
<http://20-30-40glassociety.org>

### March 11-12, 2017

Metroplex Looking Glass 81<sup>st</sup> Show & Sale  
Grapevine Convention Center  
Grapevine, TX  
<http://meyershows.com>

### March 17-18, 2017

Heart of America Glass Collectors  
Depression Era Glass and Pottery Show and Sale  
Roger T. Sermon Community Center  
Independence, MO  
<http://www.hoagc.org/Glass%20Show%20page.htm>

Give this page to a friend



The National Cambridge Collectors  
P.O. Box 416 ~ Cambridge, Ohio 43725

“FRIENDS OF CAMBRIDGE” MEMBERSHIP

The National Cambridge Collectors, Inc. (NCC) is a non-profit organization dedicated to the education and preservation of the great work of the Cambridge Glass Company. Founded in 1974, we depend on the financial support of our members, who we call **Friends of Cambridge**, for the majority of our operating budget. Won't you consider becoming a Friend of Cambridge?

Friend #1 \_\_\_\_\_

Friend #2 \_\_\_\_\_

Friend #3 \_\_\_\_\_

(continue on reverse if needed - indicate any children and their year of birth, only those 18 and older residing in your household may vote)

Address \_\_\_\_\_

City/State/Zip \_\_\_\_\_

Email Address (required) \_\_\_\_\_

Phone Number \_\_\_\_\_

Crystal Ball newsletter delivery: \_\_\_ email (color) \_\_\_ paper (black & white)

Glass collecting interest: \_\_\_\_\_

New Member? (Y/N) \_\_\_ or Renewal? \_\_\_ If renewal, Member #s \_\_\_

*Levels of Membership*

Patron \$ 35

Century Level	\$ 100	Mardi Gras Level	\$ 200
Japonica Level	\$ 500	President's Circle	\$ 1,000

*All members receive the Crystal Ball, free Museum admission and 10% off any book/DVD purchases, President's Circle includes Convention registration for two members in the household and one free copy of any new NCC publication.*

All memberships are renewed annually via The Annual Fund mailing in late March/early April. All Annual Fund gift recognition levels are per household and include membership for everyone within the household 18 and older. Each household will receive a subscription to the Crystal Ball newsletter, unlimited admissions to the museum, and rights to vote in elections for the Board of Directors and discounts on NCC books. NCC is a 501(C)(3) organization and Annual Fund gifts are allowed as a tax deduction under Section 170 of the Internal Revenue Code. Contact your tax advisor for your individual situation.

Return this form with check or money order payable to NCC, Inc. at the above address.  
And always visit us at [www.cambridgeglass.org](http://www.cambridgeglass.org) to see what's new!

# For Sale - NCC Books and DVD

Published by NCC • Members receive a 10% discount

TITLE		REGULAR PRICE	MEMBER PRICE
1910 NearCut Catalog Reprint	108 pages, paperback, no price guide	\$14.95	\$13.45
1927-29 Catalog Reprint	66 pages, paperback, no price guide, includes identification guide	\$9.95	\$8.95
1930-34 Catalog Reprint	250 pages, paperback with 2000 price guide	\$14.95	\$13.45
1930-34 Catalog Index	Index for above	\$2.00	\$1.80
1949-53 Catalog Reprint	300 pages, paperback, no price guide	\$19.95	\$17.95
Cambridge Colors II (New)	Hardcover with price guide	\$19.95	\$17.95
<b>Cambridge Rose Point – A Collector's Guide *** NEW ***</b>		<b>\$29.99</b>	<b>\$27.00</b>
Caprice	200 pages, paperback, no price guide	\$19.95	\$17.95
Decorates	136 pages, paperback, no price guide	\$14.95	\$13.45
Etchings (2nd Edition)	102 pages, paperback, no price guide	\$17.95	\$16.15
Etchings, Non-Catalogued	70 pages, paperback, no price guide	\$12.95	\$11.65
Etchings: Blossomtime	26 pages, paperback, no price guide	\$7.95	\$7.15
Etchings: Candlelight	30 pages, paperback, no price guide	\$7.95	\$7.15
Etchings: Chantilly	44 pages, paperback, no price guide	\$7.95	\$7.15
Etchings: Diane	53 pages, paperback, no price guide	\$7.95	\$7.15
Etchings: Elaine	64 pages, paperback, no price guide	\$9.95	\$8.95
Etchings: Portia	57 pages, paperback, no price guide	\$7.95	\$7.15
Etchings: Wildflower	42 pages, paperback, no price guide	\$7.95	\$7.15
Rock Crystal Engravings	119 pages, paperback, no price guide	\$17.95	\$16.15
Rock Crystal Engravings (Listings)	Companion to above; lists all pieces in all patterns	\$9.95	\$8.95
Rock Crystal 1940 Illustrated Catalog & Price List		\$14.95	\$13.45
Rose Point - Second Edition	146 pages, paperback, no price guide	\$19.95	\$17.95
Pharmaceutical Catalog No.8 1915-1920 Reprint	68 pages, paperback, no price guide	\$9.95	\$8.95
Cambridge Arms compendium		\$7.95	\$7.95
1916 General Catalogue		\$13.95	\$13.95
Rose Point Program - DVD (Postage \$3.00)		\$19.95	\$17.95
Caprice Program - DVD (Postage \$3.00)		\$19.95	\$17.95

## How to Order by Mail or from the NCC Website

Send orders to:  
NCC • PO Box 416 • Cambridge, OH 43725

OHIO RESIDENTS PLEASE ADD 7.25% SALES TAX

SHIPPING:  
\$5.00 FOR THE FIRST PUBLICATION  
\$1.00 FOR EACH ADDITIONAL ITEM

Please include your name, complete mailing address and your phone number or e-mail address.

Payments by check or Money Order only, payable to NCC

Books may also be purchased on the NCC website,  
[www.cambridgeglass.org](http://www.cambridgeglass.org).

Major Credit Cards are only accepted for web purchases.



# DEALER DIRECTORY

**Dealer Directory - \$24 for 12-months, size limited by box (see below). Includes listing on NCC website.**


## Advertising Rates:

1/8 page \$15      1/4 page \$20  
1/2 page \$30      Full page \$50

Electronic submissions should be emailed to:

[editor@cambridgeglass.org](mailto:editor@cambridgeglass.org)

Use Word. Mailed submissions and all payments should go to PO Box 416, Cambridge, OH 43725. Deadline is 10th of preceding month. Ads must be paid in advance. Show listings are FREE; send info to PO Box or e-mail address 60 days before event.



**Connecting Buyers & Sellers!**  
Tell us what you are looking for and we help find it.  
**CAMBRIDGE GLASS.US**  
P. Snyder 740-601-6018  
E-Mail and Find Your Glass!  
[psnyder@cambridgeglass.us](mailto:psnyder@cambridgeglass.us)  
[www.cambridgeglass.us](http://www.cambridgeglass.us)

**E-Blast**  
When you are searching for Cambridge glass, email your request and it is emailed to all members and dealers.  
P. Snyder, 1500 Edgewood Dr., Circleville, Ohio 43113

**PATTON HOUSE ANTIQUES**  
Specializing in Glass  
Heisey • Cambridge • Fostoria • Duncan  
**Factory Antique Mall**  
Verona, VA off I-81. Exit 227  
The Daniels, Box 547 Louisa, VA 23093  
(540) 967-1181

**Cheshire Cat Antiques**  
Specializing in elegant depression to mid-century era glass and vintage kitchen glass.  
Francee Boches > 305-884-0335  
[fboches@cheshirecatantiques.com](mailto:fboches@cheshirecatantiques.com)

Pull up a Mouse!  
Shop 24 hrs a day at  
[cheshirecatantiques.com](http://cheshirecatantiques.com)



**Cherished Collectibles**  
Shopping 24 hours in our online store  
Glassware, Figurines, Collectors' Plates  
[www.cherishedcollectibles.com](http://www.cherishedcollectibles.com)  
Elegant and Depression Era Glass

**Heirloom Glass Antiques & Gifts**  
*Large Selection Of Cambridge*  
13411 Columbia Hwy.  
Lynnville, TN 38472  
[www.heirloomglass.net](http://www.heirloomglass.net) 931-446-5492  
[juanita@heirloomglass.net](mailto:juanita@heirloomglass.net)

Edward Sawicki  
**Memories Antiques**  
"Glass is our Passion"  
Candlesticks and stemware our Specialty.  
PO Box 153 646-522-1506  
Dunnellen, NJ 08812 [ejawicki@optonline.net](mailto:ejawicki@optonline.net)


**CRYSTAL LADY**  
1817 Vinton St. Omaha, NE 68108  
**Bill, Joann and Marcie Hagerty**  
402-699-0422  
Specializing in Elegant Glass & Collectibles  
[www.crystalladyantiques.com](http://www.crystalladyantiques.com)

**Glen & Carolyn Robinson**  
**White Rose Antiques**  
Specializing in Depression Era Glassware  
2454 McFarland Road  
York, SC 29745  
803-684-5685  
[gandcrobinson@aol.com](mailto:gandcrobinson@aol.com)  
[whiteroseglassware.com](http://whiteroseglassware.com)

**CRYSTALLINE COLORS**  
Cambridge • Fostoria • Elegant Glass  
Penny Court Mall, Cambridge - 2 booths  
Medina Antique Mall  
Medina, OH (I-71, exit 218)  
Lynne R. Franks 216-661-7382

**GLASS FROM THE PAST**  
Maureen Gillis  
  
[www.glassfromthepast1.com](http://www.glassfromthepast1.com)  
email: [maureen@glassfromthepast1.com](mailto:maureen@glassfromthepast1.com)

**Cambridge Nudes - Dave Small**  
[HTTP://CambridgeNudes.com](http://HTTP://CambridgeNudes.com)  
3011 Cambridge Statuesque  
**Buy, Sell, Trade**  
[davesmall@mac.com](mailto:davesmall@mac.com)  
281-376-3686

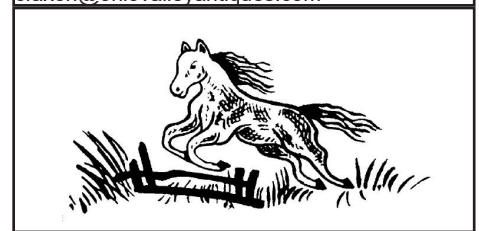


**TWEAK COLLECTIBLES**  
Specializing in Elegant Glass  
BUY & SELL  
WANTED: CAMBRIDGE TURKEYS  
417-742-3653  
[btummons@aol.com](mailto:btummons@aol.com)

**Virtualattic at The Glass Chalet**  
Specializing in  
Elegant Depression Era Glass  
**Sandra L. Bridwell-Walker**  
PO Box 726  
Newcomerstown OH 43832-0726  
740-492-5022 (H) 817-559-0328 (C)  
[virtualattic@sbcglobal.net](mailto:virtualattic@sbcglobal.net) [theglasschalet@sbcglobal.net](mailto:theglasschalet@sbcglobal.net)

**Max Miller**  
**Elegant American Glassware**  
[www.maxmillerantiques.com](http://www.maxmillerantiques.com)  
The Market Place  
10910 Katy Freeway. 713-410-4780  
Houston TX 77043 [mmxglass@aol.com](mailto:mmxglass@aol.com)

**Ohio Valley Antique Mall**  
7285 Dixie Highway (Route 4)  
Fairfield, OH 45014  
Cincinnati's Largest Multi-Dealer Antique Mall  
Hours: DAILY 9:00 a.m. - 9:00 p.m.  
513-874-7855  
[www.ohiovalleyantiquemall.com](http://www.ohiovalleyantiquemall.com)  
[cfaxon@ohiovalleyantiques.com](mailto:cfaxon@ohiovalleyantiques.com)



**ISAACS ANTIQUES**  
(740) 826-4015  
☞ Located in ☜  
**Penny Court Mall** **Relics Mall**  
637 Wheeling Ave 616 Main St  
Cambridge, OH Zanesville, OH

**BAKER FAMILY MUSEUM**  
805 CUMBERLAND ST.  
CALDWELL, OHIO 43724  
740-732-6410  
[bakermuseumnellbaker@msn.com](mailto:bakermuseumnellbaker@msn.com)  
Wed & Thurs 9-4; Fri - Sat 9-5

**MARGARET LANE ANTIQUES**  
2 E. Main St. New Concord, OH 43762  
Lynn Welker (740) 826-7414  
Cambridge Glass Matching Service  
Hours: Mon-Fri 10-12 AM, 1-5 PM  
or by appointment

**Our House Antiques**  
Linda and David Adams  
Las Vegas, NV  
1-800-357-7169  
[www.OurHouseAntiques.com](http://www.OurHouseAntiques.com)  
email: [David@OurHouseAntiques.com](mailto:David@OurHouseAntiques.com)




National Cambridge Collectors, Inc.  
PO Box 416  
Cambridge OH 43725  
email: [editor@cambridgeglass.org](mailto:editor@cambridgeglass.org)  
website: [www.cambridgeglass.org](http://www.cambridgeglass.org)



*This photo is the Cambridge Glass Company Cutting/Engraving Department, circa 1920 - 1930. We think the man on the far left in the white apron might be Herschel Hancock. Any help identifying these men would be appreciated. This photo is on display at the National Museum of Cambridge Glass.*

**The National Museum  
of  
Cambridge Glass**

**Open April thru October  
only**

