



# Cambridge Crystal Ball

Published by the National Cambridge Collectors, Inc. as a resource which informs, invites and inspires people to encourage the continued preservation of the glass produced by the Cambridge Glass Company of Cambridge, Ohio for future generations.

Issue No. 456

March 2012

## What's up at the Museum! By Cindy Arent

Most people think of winter as a peaceful, quiet time of the year. However, in and around the museum it is quite the opposite. As our last motor coach pulled away on New Year's Eve, the annual cleaning and transformation of displays began. All of the holiday decorations were put away and left over seasonal merchandise was packed in preparation for next season.

On the first Saturday in January, the museum was a clue site for the Sherlock Holmes Murder Mystery weekend. That same day, Ralph and Linda Warne arrived to pick up their wonderful ice bucket collection from one of the feature rooms. It is always sad to see the feature rooms torn down and Ralph and Linda's collection was enjoyed by close to 4,000 museum visitors this year! The following Saturday was one of the "mega" cleaning days and many cases were cleaned. Volunteers were scurrying around with Windex in hand as showcase doors were lifted out and the glass began to sparkle again!

Each year, we are invited by the Cambridge/Guernsey County Visitors & Convention Bureau to promote in their booth at the AAA Great Vacations Expo in Columbus, Ohio. On January 21<sup>st</sup>, Sharon Miller, Lindy Thaxton and Cindy Arent headed out in the ice storm for the Expo. We were very busy during the day chatting with visitors and passing out information dressed as glassworkers. NCC members, Bob and Ann Baird stopped by our booth to say hello and we enjoyed talking with them.

The following Tuesday, Sharon and Lindy were interviewed at the museum for the New Ohio Guide which is a cultural tourism initiative by the Ohio Humanities Council made possible by the Ohio Department of Transportation. Their interview will be included in a 22 part radio series that will be aired on Ohio Public Radio stations from May through October, 2012. These tours will be free downloadable MP3s so travelers can jump in their cars at the spur of the moment and travel the route.

January 28<sup>th</sup> was another day to remember as volunteers began arriving at the museum for another big day of cleaning. Cleaning at

the museum were: Squeek and Dorothy Rieker, Frank and Vicki Wollenhaupt, Rich Bennett, Lindy Thaxton, Sharon Miller, Carl Beynon and Cindy Arent. Dave Rankin was also at the museum working on the Rose Point DVD distribution.

During the first few days of February, NCC was contacted through the website by Phoenix Home and Garden magazine. They were interested in doing an article about flower frogs and requested images. Dave Rankin sent several photos to the magazine. We also received word that the Ohio Department of Transportation needed more of the museum rack cards for the Travel Information Centers located along major highways in Ohio. NCC member Sharon Bachna volunteered to drive the box to the ODOT garage in Columbus for distribution.

Alex Citron and Shelley Cole arrived on February 3<sup>rd</sup> to collect their keyhole collection from the museum Sample Room. Their outstanding keyhole collection was used to help museum visitors visualize one way they could identify Cambridge Glass in the marketplace. The following day Carl Beynon, Squeek and Dorothy

*Continued on page 8*



Sharon Miller and Lindy Thaxton, dressed as glassworkers, read the winning name of the hourly drawing at the AAA Great Vacations Expo in January. Expo visitors were very interested in vacationing in Cambridge/Guernsey County and coming to the museum!

# National Cambridge Collectors, Inc.

PO Box 416 Cambridge, OH 43725-0416

## Board of Directors

|               |               |                   |
|---------------|---------------|-------------------|
| Cindy Arent   | Ken Filippini | Nancy Finley      |
| Les Hansen    | Rick Jones    | Helen Klemko      |
| Freeman Moore | Mark Nye      | David Ray         |
| Mike Strebler | Lynn Welker   | Frank Wollenhaupt |

## Officers

|                  |               |
|------------------|---------------|
| President        | David Ray     |
| Vice-President   | Ken Filippini |
| Secretary        | Freeman Moore |
| Treasurer        | Mike Strebler |
| Sergeant-at-Arms | Mark Nye      |

|                                |                                  |
|--------------------------------|----------------------------------|
| Director of Strategic Planning | Rick Jones                       |
| Director of Human Resources    | David Ray                        |
| Chair, Standards Committee     | Sharon Miller                    |
|                                | Larry Everett - Committee Member |
|                                | Susan Everett - Committee Member |
|                                | David Ray - Committee Member     |
|                                | Mike Strebler - Committee Member |

## Member Services

|                         |  |
|-------------------------|--|
| <b>Vice President</b>   | Frank Wollenhaupt  |
| Member Relations        | (vacant) Director of Member Relations                    |
|                         | Tarzan Deel - Membership Data-base Administrator         |
| Crystal Ball Convention | Helen Klemko - Executive Editor                          |
|                         | Julie Buffenbarger & Nancy Finley - Convention Directors |
| Digital Media           | Alex Citron - Manager of Facebook Operations             |
| Member Meetings         | (vacant)   |
| Study Groups            | Jeannie Moore - Study Group Coordinator                  |

## Development

|                       |  |
|-----------------------|--|
| <b>Vice President</b> | Larry Everett  |
| Campaigns             | Ken & Jane Filippini - Annual Fund Directors                         |
|                       | Larry Everett - Director of the Heritage Society                     |
| Events                | Jack & Elaine Thompson - Auction Managers                            |
|                       | <a href="mailto:jack1746@roadrunner.com">jack1746@roadrunner.com</a> |
|                       | Lynn Welker - Auction Manager  |
|                       | Joy McFadden - Show Manager  |
|                       | Mary Beth Hackett - Show Manager                                     |
|                       | Larry & Susan Everett - Glass Dash Managers                          |
| Projects              | Carl Beynon - Jeweler & Scotties Project Manager                     |
| Publicity             | Frank Wollenhaupt  |

## Education

|                       |                                     |
|-----------------------|-------------------------------------|
| <b>Vice President</b> | Les Hansen                          |
| Publications          | Mark Nye - Director of Publications |
| Research              | Mark Nye - Archivist                |
| Programming           | Greg Vass - Director of Programming |
| NCC History           | Mark Nye - Archivist                |

## Museum

|                       |                                       |
|-----------------------|---------------------------------------|
| <b>Vice President</b> | Cindy Arent                           |
| Public Operations     | Sandy Rohrbough - Docent              |
|                       | Betty Sivard - Docent                 |
|                       | Sally Slattery - Docent               |
| Facilities & Grounds  | Carl Beynon - Director of Facilities  |
| Collections           | Lynn Welker - Director of Collections |
| Merchandise Sales     | Lynn Welker - Gift Shop Manager       |
|                       | Cindy Arent - Gift Shop Manager       |
| Community Relations   | Cindy Arent                           |

## Administration

|                        |                               |
|------------------------|-------------------------------|
| <b>Vice President</b>  | Mike Strebler                 |
| Accounting & Finance   | Lisa Neilson - Office Manager |
| Risk Management        | (vacant)                      |
| Payroll                | (vacant)                      |
| Information Technology | David Adams - Webmaster       |
| Legal                  | (vacant)                      |

## ADDRESS CHANGES

Please send address changes to:  
 Membership - NCC  
 PO Box 416  
 Cambridge, OH 43725  
 or by e-mail to:  
[tarzandeel@verizon.net](mailto:tarzandeel@verizon.net)

## WEBSITES

- **NCC WEBSITE**  
[www.CambridgeGlass.org](http://www.CambridgeGlass.org)
- **MIAMI VALLEY STUDY GROUP WEBSITE**  
[www.mvsg.org](http://www.mvsg.org)

## CONTACTS

NCC Museum (phone)..... (740) 432-4245  
[nccglass@yahoo.com](mailto:nccglass@yahoo.com)  
 David Ray, President.....  
 e-mail: [westervillesh@hotmail.com](mailto:westervillesh@hotmail.com)  
 Freeman Moore, Secretary.....  
 e-mail: [freemanmoore@verizon.net](mailto:freemanmoore@verizon.net)  
 Helen Klemko, Crystal Ball Editor.....  
 e-mail: [ncccrystalball@charter.net](mailto:ncccrystalball@charter.net)

## The National Museum of Cambridge Glass



**Closed for the season  
 - see you in April**



# PRESIDENT'S MESSAGE

## 2012 Annual Fund

March is an exciting month for NCC. The first weekend of the month is highlighted by our annual Benefit Auction. The auction committee has been working for the past seven months to organize a high-quality auction consisting of 400 pieces of Cambridge glass. The glass consignments this year are high quality. I want to thank the glass consigners, auction attendees, absentee bidders, and the auction committee for their support for NCC. The Benefit Auction is an important fundraising event whose revenue helps NCC realize its vision. People attending last year's auction witnessed five hours of excitement and enthusiastic bidding. Please join us this year and experience the excitement.

For the past seven years, March has marked the beginning of NCC's most important fundraising event of the year. The Annual Fund mailing will take place the second week of March. In addition to the Annual Fund materials, the mailing includes an election ballot for your 2012 Board of Directors. Please read about and carefully consider each of the candidates running for the Board of Directors prior to voting. Since its inception, the Annual Fund has been extremely successful. Over the past seven years, the success of the Annual Fund has allowed the Board of Directors to pay off the museum mortgage, purchase the Cambridge glass molds from the Summit Art Glass Company, and increase the Endowment Fund from \$60,000 to \$200,000. Although this is an amazing accomplishment for an organization consisting of only 600 households, but we still have work to do. At the current growth rate of the Endowment Fund, 12 years will be required for us to reach \$500,000. If investment returns remain at their current rate, we will need \$800,000 in our Endowment Fund to maintain our current level of operations at the museum.

Since becoming a member in 1989, I have witnessed many positive changes within NCC. Our greatest accomplishment was building a first-class museum after the 1998 flood. In 2011, the museum hosted more than 4,000 visitors and has become an important destination for tourists to the Cambridge area as well as regional bus tour companies. These changes are a direct result of our dedicated staff, enthusiastic volunteers, and the financial support of our membership. I am truly grateful to all the volunteers who have selflessly dedicated countless hours to make NCC the best glass collectors club in the country.

Although I have been fortunate to witness and be part of many of the exciting accomplishments NCC has achieved, opportunities to interact with fellow Cambridge glass collectors continues to bring me the most joy. Over the past 23 years, I have travelled throughout the eastern half of the country attending glass shows and visiting the homes of several NCC members. Listening to collectors detail the events of how their collection began and the many joys they have experienced collecting Cambridge glass never gets old. Each of these experiences has fueled my passion for collecting Cambridge glass and increased my desire to serve NCC as a member of the Board of Directors.

When you receive your 2012 Annual Fund mailing, please keep in mind the friendships you have made and the experiences you have enjoyed as a result of collecting Cambridge glass. Most of my closest friends are Cambridge glass collectors. I am very thankful for these relationships. To continue serving the needs of the Cambridge glass community, to educate visitors about the rich history of the Cambridge Glass Company, and to maintain a world-class museum, we request your generous contribution to the 2012 Annual Fund. Let's make 2012 a record-setting year!

If you are planning to attend the 2012 Annual Convention, registration information and forms will be printed in the April and May issues of the Crystal Ball. Convention co-chairs Julie Buffenbarger and Nancy Finley are always looking for ways to make Convention the best experience possible for everyone. This year, Convention will officially start on Thursday instead of Wednesday. Please watch for future articles detailing the schedule of events for the 2012 Convention.

*David*

David Ray  
westervillesh@hotmail.com

Cover letter and contract for dealers who wish to participate in the  
2012 NCC Glass Show & Sale.

1/18/12

Dear

Quality dealers are being accepted for the 2012 National Cambridge Collectors Glass Show & Sale to be held June 22-23rd 2012 at the Pritchard Laughlin Civic Center in Cambridge Ohio. Please read your contract carefully, as there are changes. If you desire space for this year's show please sign and return both copies of your contract by March 22, 2012.

Again this year we are offering a "Refer a Friend" program. If you recruit a new quality dealer for this year's show (they must set up in this year's show) you will receive a \$50 reduction in your booth rental.

In consideration of those attending the glass show, once unloading is finished all individuals who are not contracted glass show dealers must remain in the booth or leave the showroom during set-up. If someone is needed to assist you they should be actively setting up in the booth and are not permitted to shop the showroom floor.

There will be an area away from the show floor for dealers to relax during set-up and the show. Light snacks will be provided by the convention chairs.

Should you have any other questions please don't hesitate to call us.

Please mail contracts and deposit to:

NCC Inc.

Show Contract

P.O. Box 416

Cambridge, OH 43725

Hope to see you in June,

**Mary Beth & Joy**

Joy McFadden

Mary Beth Hackett

Phone (614-973-9145)

e-mail- mbhjrm@aol.com

**THIRTY-SIXTH ANNUAL  
NATIONAL CAMBRIDGE COLLECTORS  
GLASS SHOW AND SALE**

**To be Held: Friday, June 22, 2012  
Saturday, June 23, 2012**

**1:00PM - 5:00 PM  
11:00 AM - 4:00 PM**

I/We hereby make application for space, for exhibition purposes, at the National Cambridge Collectors Glass Show, to be held at the Pritchard Laughlin Civic Center, off I-70 on Route 40 (Exit 176) ½ mile East, on June 22 and 23, 2012. I/We hereby agree to pay the sum of One Hundred, Seventy-five dollars (\$175.00) for a standard 4 table booth space, with a cost of \$43.75 for each extra table, as follows: \$75.00 with this application, with balance to be paid June 23, 2012.

Make checks payable to: NATIONAL CAMBRIDGE COLLECTORS, INC.

I/We hereby agree to the following conditions:

1. The Lessor shall not be responsible for any injury or loss that may arise or come to the lessee, or his employees, or his goods, from any cause, while said premises are occupied under this agreement.
2. If said premises are destroyed by fire, or any cause makes it impossible to hold the Thirty-Sixth Annual National Cambridge Collectors Glass Show and Sale, this lease shall be terminated and the Lessee shall waive any claim, except the return of the deposit.
3. The management will provide tables and chairs. Each standard booth will consist of four (4) eight-foot tables. You may bring your own small table for wrapping and selling.
4. Helpers may be used to move items into the show building and also used to help set up the dealers show space. Helpers will be confined to the dealer booth after a dealer's items have been moved inside. Helpers will not be allowed to roam the floor. Helpers are the dealer's responsibility. Helpers that are found to be in violation of this policy will be asked to leave and not allowed to return during setup.
3. **Unloading and Set up will be permitted Thursday, June 21st between the hours of 8:00-4:00 PM.**
6. **Dealers will be permitted in the showroom at 9:00 AM Friday prior to the Grand Opening at 1:00 PM. No backdrops may be used unless the booth position is against the wall.**
7. NO exhibit may be removed until the show closes at 4:00 PM Saturday, June 23rd.
8. Assistance with loading and unloading will be available if needed. Please indicate this need in advance. TIPPING is a must if you use this service.
9. Exhibits should be limited to items that are definitely old or collectible, and suitable to the character of an Elegant Depression Glass Show. All merchandise should be clean, and clearly priced. Booths will be screened.
10. Please be sure your table covers go to the floor, unless you are displaying merchandise under the table. Boxes and packing materials must be out of sight.
11. Local fire regulations must be observed.
12. The management will not provide insurance. All insurance will be the responsibility of the exhibitor. I/We hereby relieve the management, the National Cambridge Collectors, and the Pritchard Laughlin Civic Center of all responsibility.
13. No one will be permitted in the showroom after the closing time.
14. Deposit on exhibit space is NOT TRANSFERABLE or returnable if said lease is canceled after May 15, 2012. It is further agreed that should I/We fail to appear for said show, that I/We shall be liable for the balance of the rental fee for the booth. If the Lessee notifies the management before June 6, 2012, that due to illness or other "just cause", they will be unable to attend, then only the deposit is forfeited.

**All dealers must be listed on the contract.** Please SIGN and return BOTH copies of the contract to the **NCC Inc. address listed on the cover letter.**

Signed: \_\_\_\_\_ Date: \_\_\_\_\_  
 Signed: \_\_\_\_\_ Date: \_\_\_\_\_  
 Signed: \_\_\_\_\_ Date: \_\_\_\_\_  
 Business Name \_\_\_\_\_  
 Address: \_\_\_\_\_ Phone: \_\_\_\_\_  
 City: \_\_\_\_\_ State: \_\_\_\_\_ Zip: \_\_\_\_\_ Vendors License # (required) \_\_\_\_\_

Please signify if you need advertising, cards or posters.



by Larry Everett

This report is provided to keep members up with what's happening on the world's largest Internet Auction site. It is not meant as an educational tool, nor as a pricing guide, and we cannot guarantee the accuracy of listings herein.

Greetings from eBay land! Please forward interesting news to me at: [heartlamps@sbcglobal.net](mailto:heartlamps@sbcglobal.net).

Rose Point:

A cute 3400/71 - 3" 4-toed individual nut dish sold for \$56.65. Just the right size for your Easter jelly beans. One of the hardest to find ice pails (Pristine 672 with Chrome handle) sold for \$99.99. A beautiful Crown Tuscan 3500/39 - 12" 2 handled, footed sandwich plate with Gold Encrusted etching sold for only \$53.99. The rare and elusive #1372 - 28 oz. decanter with polished-in cut stopper finally ended after quite a tussle for \$1,494.



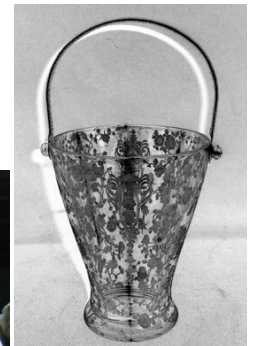
#1305 - Crystal 10-1/2" Globe Vase, Keyhole Stem, Etched Apple Blossom



Royal Blue No. 646 - 5" Candlestick, Gold Encrusted Magnolia

Statuesque:

A wonderful 3011 - Cigarette Box and Cover, Tall Stem (Carmen & Crystal) flew to a new home for \$325. A magnificent pair of 3011 - 7" Comport, Cupped (Smoke & Crystal) ended at \$371.54 for the pair.



Pristine 672 Ice Bucket with Chrome handle etched Rose Point

Other Etchings:

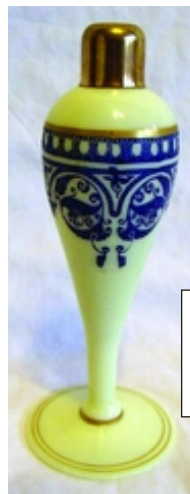
This next item is breathtaking in its simplicity and beauty! A rare Frosted Pink No. 797 - 8" Tumbler Shaped Vase, Spiral Optic with stunning GE Imperial Hunt Scene around the top ended at \$386.99. A nice #419 Relish with a #533 Mayo in the center, Etched Chantilly sold for \$41. A #1305 - Crystal 10-1/2" Globe Vase, Keyhole Stem, Etched Apple Blossom on the bowl and foot sold for a mere \$135.99. Another gorgeous find was an Ivory 6" perfume with Blue enamel #704 etching (atomizer was missing). This lovely Valentine's Day gift was purchased for \$516.01.



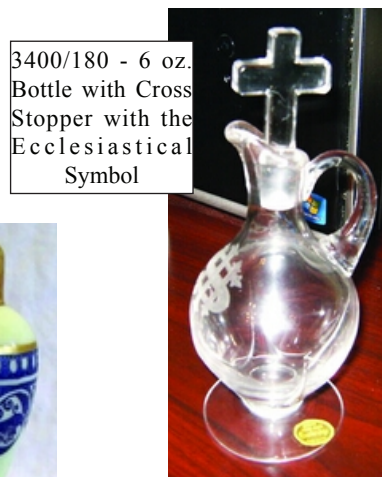
Crystal #3500 cream soups and under plates

Miscellaneous:

A Crown Tuscan 1066 - Oval Cigarette Holder with Ash Tray Foot sold for \$184.50. Who doesn't want an 18 piece set of Cambridge Arms? You could have bought this amazing assortment for only \$291.69. One of the hardest bottles to find is the 3400/180 - 6 oz. Bottle with Cross Stopper with the Ecclesiastical Symbol etching. If you put \$100 in the offering plate you were the winner! A show stopping Royal Blue No. 646 - 5" Candlestick, Gold Encrusted Magnolia (one only) sold for \$46.00. A nice pair of Rubina No. 438 - 8 1/2" Candlesticks sold for \$280.36. If you needed a nice set of Crystal #3500 cream soups and under plates, you could have purchased a lot of six for only \$110.



Ivory 6" perfume with Blue enamel #704 etching



3400/180 - 6 oz. Bottle with Cross Stopper with the Ecclesiastical Symbol



Crown Tuscan 1066 - Oval Cigarette Holder with Ash Tray Foot



797 - 8" Tumbler Shaped Vase, Spiral Optic with stunning GE Imperial Hunt Scene

Happy hunting!

# ***“A Hunting We Will Go”***

## **Tentative Hunt Followers’ schedule**

### **THURSDAY, JUNE 21, 2012**

|                |   |                                    |
|----------------|---|------------------------------------|
| <b>2:00 PM</b> | Registration Opens                                      | Pritchard Laughlin Galleria        |
| <b>5:00 PM</b> | “Fox and the Hound” Cocktail Hour and Ratcatcher Picnic | Pritchard Laughlin Grounds         |
| <b>7:30 PM</b> | Program - “Imperial Hunt Scene”<br><i>Speaker TBD</i>   | Pritchard Laughlin Conference Room |

### **FRIDAY, JUNE 22, 2012**

|                 |   |                                    |
|-----------------|---|------------------------------------|
| <b>8:00 AM</b>  | Registration Opens<br>Numbers will be distributed for Glass Show Entry  | Pritchard Laughlin Galleria        |
| <b>10:00 AM</b> | First Time Conventioneers & Mentors and Friends Programs<br>“Coffee with Cambridge”<br>Visit the Display Rooms at the Museum and interact with collectors who have assembled displays for 2012. | National Museum of Cambridge Glass |
| <b>11:00 AM</b> | Program - Cambridge 101: Learn the Basics to Cambridge Glass Identification<br><i>Presented by Jim Finley and Jack Thompson</i>   |                                    |
| <b>10:00 AM</b> | Drop off “Tally Ho /Hunt Scene” Table Displays  | Pritchard Laughlin Galleria        |
| <b>12:15 PM</b> | 50/50 “Tally ~ Ho” Raffle Begins  | Pritchard Laughlin Galleria        |
| <b>12:55 PM</b> | “Tally ~ Ho” Winner Announced   |                                    |
| <b>1:00 PM</b>  | Opening of the Show and Sale  | Pritchard Laughlin Exhibit Hall    |
| <b>5:00 PM</b>  | Closing of Show and Sale  |                                    |
| <b>5:30 PM</b>  | “Tally ~ Ho” Cocktail Reception   | Pritchard Laughlin Galleria        |
| <b>6:00 PM</b>  | Hunt Master’s Feast<br>Recognition of Volunteers & Awards Presentations   | Pritchard Laughlin Galleria        |
| <b>8:00 PM</b>  | “Hunting Trophies” & Glass Identification   | Pritchard Laughlin Civic Center    |

### **SATURDAY, JUNE 23, 2012**

|                 |  |                                    |
|-----------------|--|------------------------------------|
| <b>7:00 AM</b>  | Glass Dash, Early Bird Admission                               | St. Benedict’s Gymnasium           |
| <b>8:30 AM</b>  | Glass Dash, General Admission                                  | St. Benedict’s Gymnasium           |
| <b>11:00 AM</b> | Close of Glass Dash/Opening of Show and Sale                   | Pritchard Laughlin Exhibit Hall    |
| <b>12:00 PM</b> | Program – “Tally ~ Ho”<br><i>Lunch and Learn with Mark Nye</i> | Pritchard Laughlin Conference Room |
| <b>4:00 PM</b>  | Closing of Show and Sale                                       |                                    |
| <b>6:30 PM</b>  | “Whippers-in” Cocktail Reception                               | Pritchard Laughlin Galleria        |
| <b>7:30 PM</b>  | Huntsman Supper  | Pritchard Laughlin Galleria        |
| <b>8:00 PM</b>  | Hunt Master’s Meeting and Hunt Followers Assembly              | Pritchard Laughlin Galleria        |

### **SUNDAY, JUNE 24**

|                |                                |                                    |
|----------------|--------------------------------|------------------------------------|
| <b>1:00 PM</b> | Cambridge Glass Worker Reunion | National Museum of Cambridge Glass |
|----------------|--------------------------------|------------------------------------|

# A Hunting We Will Go!

Fox hunting atop of a steed may come to a close in mid-Spring in the United States, but for the National Cambridge Collectors...the hunt is just about to begin. The "Open Meet" begins June 21st through June 24<sup>th</sup> 2012 in Cambridge, Ohio at the National Cambridge Collectors Convention.

Some scheduling changes have been made to the 2012 convention in comparison to recent years' past. Most notably, the picnic will be moved to Thursday evening so that more hunt followers (aka convention attendees) may enjoy fellowship with other hunt followers. The location of the picnic is conveniently outside Pritchard Laughlin Convention Center allowing for dealer participation in the festivities and easy transition to evening educational programming. The "Fox and the Hound" Cocktail hour will begin at 5:00 pm with the "Ratcatcher" Picnic to follow at 6:00 pm on Thursday, June 21<sup>st</sup>.

A variety of educational programming will be available throughout the duration of the convention to the delight of the Amateur to the Hunt Master. Most notably, two talks will be given on the Imperial Hunt Scene etching and the Tally Ho line. Thursday evening's educational program will focus on the "Imperial Hunt Scene" and Saturday's Lunch and Learn will provide education on the "Tally Ho" line.

In closing, please make your hotel reservations early this year. The gas well industry is having a "boom" in southern Ohio and rooms are limited and fill quickly. Local hotel proprietors recommend booking at least six weeks in advance to insure that you have accommodations for the convention.

We look forward to providing more in-depth coverage of the 2012 National Cambridge Collector's Convention in subsequent issues of the Crystal Ball. Until then...Tally Ho!

## What's up at the Museum! (continued)

Rieker, Rich Bennett, Lindy Thaxton, Elaine Thompson, Sally Slattery, Cindy Arent and Betty Sivard volunteered their time. More cases were cleaned, light bulbs replaced, and the Museum Sample Room received its annual inspection. By the end of the day only six cases were left to be done in the front display area of the museum. There is still much to do, but we are making good progress.

Two of the three feature showrooms are now empty and ready for the new 2012 displays. The next issue of the Crystal Ball will have photos and descriptions of the new exhibits. The 2012 dining room features light emerald and is in the first stage of design.

We look forward to seeing you at the museum during the 2012 season!



Volunteers at the January 14th museum cleaning day were: kneeling (l-r) Dawson Wollenhaupt and Cindy Arent; Row 1 – Rich Bennett, Vicki Wollenhaupt, Kay Marchant, Lindy Thaxton and Sharon Miller; Row 2 - Jack Thompson, Frank Wollenhaupt, Elaine Thompson, Larry Everett, Susan Everett and Joe Miller



Museum 2012 Display Preview – Carl Beynon and Cindy Arent had a good time working on the crown roast for the new dining room display. This year the room will feature Light Emerald and will be finished by the March auction.



**IT'S TIME TO MAKE YOUR RESERVATIONS  
FOR THE 2012 NCC CONVENTION  
JUNE 21<sup>st</sup> - June 24<sup>th</sup>, 2012**

**THE FOLLOWING IS A LISTING OF MOTELS AND RATES –  
ASK FOR THE CAMBRIDGE GLASS CONVENTION RATE**

|   |   |   |  |
|---|---|---|--|
| <b>Baymont Inn &amp; Suites</b><br>61595 Southgate Parkway<br>Cambridge, Ohio | www.baymontinns.com<br>740-439-1505 or 877-229-6668<br>Call for rates   | <b>Southgate Hotel</b><br>2248 Southgate Parkway<br>Cambridge, Ohio   | www.southgatehotel.net<br>740-432-7313 or 800-272-6232<br>\$65.00 + tax Standard Double<br>or King |
| <b>EconoLodge</b><br>1945 Southgate Parkway<br>Cambridge, Ohio                | www.choicehotels.com<br>740-439-3581<br>\$59.99 +tax Double<br>\$69.99 +tax Two Queens<br>or King                             | <b>Super 8</b><br>8779 Georgetown Road<br>Cambridge, Ohio   | www.super8.com<br>740-435-8080 or 800-800-8000<br>\$60.00 +tax – Standard Double                   |
| <b>Budget Inn</b><br>6405 Glenn Highway<br>Cambridge, Ohio                    | 740-432-2304<br>\$45.00 +tax Double   | <b>Salt Fork State Park &amp; Conference Center</b><br>US 22 East,<br>Cambridge, Ohio   | www.saltforkresort.com<br>740-439-2751 or 800-282-7275<br>Call for rates                           |
| <b>Comfort Inn</b><br>2327 Southgate Parkway<br>Cambridge, Ohio               | www.choicehotels.com<br>740-435-3200 or 800-228-5150<br>\$79.99 + tax – Standard Double<br>or King<br>\$109.99 + tax – Suites | <b>Colonel Taylor Inn</b><br>633 Upland Road<br>Cambridge, Ohio   | www.coltaylorinnbb<br>740-432-7802<br>Call for rates   |
| <b>Cambridge Days Inn</b><br>2328 Southgate Parkway<br>Cambridge, Ohio        | www.daysinn.com<br>740-432-5691 or 800-432-5691<br>\$99.00 – Standard Double<br>10% Discount when you<br>mention NCC          | <b>Charming Little B&amp;B</b><br>1511 Clairmont Avenue<br>Cambridge, Ohio  | www.charminglittlebandb.com<br>740-630-6002<br>Call for rates                                      |
| <b>Deer Creek Express</b><br>2321 Southgate Parkway<br>Cambridge, Ohio        | www.deercreekmotel.net<br>740-432-6391 or 800-637-2917<br>\$65.00 + tax – Standard Double                                     | <b>Friendship House Bed &amp; Breakfast</b><br>62 West Main Street<br>New Concord   | 740-826-7397<br>Call for rates   |
| <b>Hampton Inn</b><br>8775 Georgetown Road<br>Cambridge, Ohio                 | www.hamptoninn.com<br>740-439-0600 or 800-HAMPTON<br>\$108.00 +tax – Standard Double  | <b>For Camping and Cabin arrangements,<br/>please visit the Guernsey County website at<br/><a href="http://www.visitguernseycounty.com">www.visitguernseycounty.com</a> or call<br/>800-933-5480.</b> |  |

*The 77<sup>th</sup> Show Sponsored by Del-Mar-Hi Depression Glass Club*  
**2012 Show and Sale**  
Early American, Patterns, Elegant, Art Deco, & Depression-Era  
Glassware, China, Kitchenware, Pottery, Books & Linens  
**Special Display: "Barware – Cocktail Hour"**  
Saturday, April 28, 2012 10am-5pm  
Sunday, April 29, 2012 10am-5pm  
**Duval High School**  
Greenbelt Road at Good Luck Road, Lanham, MD  
Capital Beltway I-95 (Outer Loop) Exit 22A Route 193E Greenbelt/NASA  
Capital Beltway I-95 (Inner Loop) Exit 21 Kashiwanoha Ave. - Right Lane,  
To Route 195 East - Greenbelt/NASA (about 21 miles to Duval H.S.)  
**\*\*\*Glass Identification - Door Prizes - Snacks\*\*\***  
Phone: 410-645-2061 / 410-261-6192, Email: [ghc@depression.net](mailto:ghc@depression.net) Admission: \$4.00

**SCHEDULE OF EVENTS FOR  
AUCTION WEEKEND  
MARCH 2 - 3, 2012**

**Friday, March 2, 2012, Pritchard-Laughlin Center**

6:30 – Open to view 2012 Auction glass  
7:30 – 8:00 – March Quarterly Meeting  
8:00 – 9:00 – 2012 Auction Preview by Lynn Welker,  
plus Show ‘n Tell

**Saturday, March 3, 2012, Pritchard-Laughlin  
Center**

9:00 - Open to view 2012 Auction glass  
10:00 – 2012 NCC Benefit Auction

# The 2011 Annual Fund and Listing of Benefactors by Mike Strebler

The 2011 Annual Fund earned the accolade of the most successful ever - a record breaking \$51,665. NCC, like most other non-profit organizations, relies on the generosity of its membership. Each of us makes choices when we prioritize our charitable giving whether it be church, alma mater, or other organization we feel passionate about. NCC is very fortunate to have been included in so many charitable giving plans during the past year.

Since NCC exists through member giving, we use an Annual Fund system to raise funds and keep track of the gifts we receive. All unrestricted gifts to NCC are included in the Annual Fund using "calendar year cash counting." If there is more than one gift in a year, the gifts are aggregated when recognizing the member's level. NCC also receives gifts for specific purposes that can only be used for the purpose indicated. These restricted gifts are recognized separately and not included in the Annual Fund.

The annual fund uses a common "renewal" date. NCC sends out Annual Fund materials to everyone once a year. There are no monthly reminders or renewal dates. The mailing usually takes place in early March each year and includes the balloting process for board elections. This year we did one "remember us" letter in the fall which kept us in touch with some busy Friends who had not yet responded for the Annual Fund.

The Annual Fund enables us to operate the museum, publish the Crystal Ball, and carry out our mission activities of education and preservation. Most other activities are self-supporting such as convention, auction, and quarterly meetings. As noted in the opening, the 2011 Annual Fund (through December 31) has had wonderful results.

If you are reading this article, there is a high probability you are a Friend of Cambridge who generously supported NCC through the 2011 Annual Fund. And there is also a high probability you supported NCC in most every year since you found the rest of the Friends, and threw in with this great group of people. There are new Friends each year, and we don't hear from some, but the majority of the supporters of the Annual Fund are there year-in and year-out. Our renewal rate from 2010 to 2011 was 93%. This is a fabulous participation rate for an arts organization like ours. The Friends of Cambridge are a loyal group.

The Annual Fund is managed on a household basis. This is because most households have more than one member but make their philanthropic decisions together. Additionally, each household receives a single Crystal Ball. There are 548 households who are participants this year. Here's a recap of participation by support level:

|                          | 2011       |                  |
|--------------------------|------------|------------------|
|                          | #          | Amount           |
| President's Circle       | 10         | \$ 10,775        |
| Japonica                 | 11         | 5,300            |
| Mardi Gras               | 46         | 9,235            |
| Century                  | 131        | 13,120           |
| Benefactors              | 198        | 38,430           |
| Patrons                  | 350        | 12,640           |
| <b>Active households</b> | <b>548</b> | <b>51,070</b>    |
| Special tributes         | 7          | 595              |
|                          | <b>555</b> | <b>\$ 51,665</b> |

The Annual Fund recognizes member philanthropy using gift recognition levels. The majority of households (350) participated at the Patron level, giving \$100 or more. The Benefactor levels (197) are amazingly consistent with almost all of last year's benefactor contributors renewing this year. Every year's Annual Fund has been a great tribute to the Friends of Cambridge in their support of Cambridge Glass and its history.

The 2011 Annual Fund, along with the success of our other key activities, has enabled us to continue our strategic plan of infusing operating funds into the endowment. In December, we transferred \$25,000 to bring our endowment fund to \$175,741. While the endowment is still in its infancy, it is a wonderful accomplishment.

The 2011 Annual Fund was the sixth year since its inception. The total raised during those six Annual Fund drives is \$257,372 ... a stunning accomplishment. We own our museum, support facility, and contents free and clear. Our newsletter, the Crystal Ball, is being published at a high quality level. And finally, we have started down the road to accomplishing our long-term goals by tripling the endowment since the inception of the Annual Fund. We have done well. In my opinion, the most important thing we have accomplished is bringing together nice people who enjoy Cambridge Glass. At some point in my life, my Cambridge Friends became most of my primary friendships.

NCC is a collective of glass friends who enjoy and appreciate the artistry of glass produced by the Cambridge Glass Company. We, collectively, are the only group of individuals dedicated to Cambridge Glass. As such, we are proud to recognize all Friends of Cambridge who contributed at the Patron level during 2011 and those Friends included in the listing of Benefactors which follows. The listing is as of December 31, 2011 and reflects the names included in the membership database. Please email or write to the main NCC address for any errors or omissions.

If you didn't participate in the 2011 Annual Fund yet, don't miss being part of 2012. The Annual Fund is also a nice way to remember former Friends by making tribute gifts in their honor. All gifts to NCC qualify for deduction from income taxes. Congratulations to all of us for the success of the 2011 Annual Fund.

# The 2011 Annual Fund and Listing of Benefactors by Mike Strebler

|                                   |               |                    |                                    |                |                    |
|-----------------------------------|---------------|--------------------|------------------------------------|----------------|--------------------|
| Doris Durham                      | Alabama       | Century            | Mark Nye                           | Michigan       | Mardi Gras         |
| Richard Reed and Trace Parish     | Alabama       | Mardi Gras         | Don Russell                        | Michigan       | Mardi Gras         |
| Robert and Janice Kastner         | Arizona       | Mardi Gras         | Ellen Teller                       | Michigan       | Century            |
| Elizabeth Sarchet                 | Arizona       | Century            | Les Hansen                         | Minnesota      | President's Circle |
| Clyde Coleman                     | Arkansas      | Japonica           | Elizabeth Moe                      | Minnesota      | Century            |
| Joann Coleman and Brian Reddick   | Arkansas      | Mardi Gras         | Mary and James Saboe               | Minnesota      | Century            |
| Norma Oliver                      | Arkansas      | Century            | Elaine Storck                      | Minnesota      | Century            |
| Dan and Leta Heincy               | California    | Mardi Gras         | Brad Allen and Gene Cooper         | Missouri       | Century            |
| Doug Ingraham and Randall Johnson | California    | President's Circle | Jim and Nancy Finley               | Missouri       | President's Circle |
| Lois James                        | California    | Century            | Ralph and Kathy Litten             | Missouri       | Mardi Gras         |
| Ann Mang                          | California    | Century            | John and Peggy Scott               | Missouri       | Century            |
| John Maves                        | California    | Century            | Ruth Smith                         | Missouri       | Century            |
| Janice and James Miller           | California    | Century            | Lyndon and Susie Tummons           | Missouri       | Century            |
| Dale and Barbara Moody            | California    | Century            | Irene E. Janson                    | Montana        | Century            |
| Bonnie and Bob Quaintance         | California    | Century            | Richard and Helen Rietz            | Montana        | Century            |
| R. Scott and Lynne Ellen Sanders  | California    | Century            | Nyla and Bruce Stanton             | Nebraska       | Century            |
| Wendy Steelhammer                 | California    | Century            | David and Linda Adams              | Nevada         | Mardi Gras         |
| Betty and Herbert Wanser          | California    | Century            | Penny and Elliot Drucker           | Nevada         | Century            |
| Tom Cotter and Tina Broderson     | Colorado      | Century            | Ranae and Dennis Travers           | Nevada         | Century            |
| Louise and Richard Baker          | Connecticut   | Century            | Ken and Jane Filippini             | New Jersey     | President's Circle |
| Emil and Marge Kleemann           | Connecticut   | Century            | Sharon and Ronald Hermone          | New Jersey     | Mardi Gras         |
| Shelby and Kathy Nussbaum         | Connecticut   | Mardi Gras         | Rick and Cindy Jones               | New Jersey     | Mardi Gras         |
| James Braue                       | Florida       | Century            | Walter and June Lee                | New Jersey     | Century            |
| Linda Gilbert                     | Florida       | Century            | David and Wendy Loss               | New Jersey     | Mardi Gras         |
| Dr. Carter Glass                  | Florida       | Mardi Gras         | Roger and Mildred Loucks           | New Jersey     | Mardi Gras         |
| William and Betty Glass           | Florida       | Mardi Gras         | Elegant Glass Collectors           | NJ/NY/PA       | Century            |
| Fleur De Lys Healy                | Florida       | Century            | Michael, Barbara, and Mary Colella | New York       | Century            |
| David and Kathy Lake              | Florida       | Mardi Gras         | Donna Kleintjes                    | New York       | Mardi Gras         |
| Ruth Lee                          | Florida       | Century            | Gloria and Michael Morris          | New York       | Century            |
| E. C. McCullars                   | Florida       | Japonica           | Peter Raleigh                      | New York       | Century            |
| Lynda and William Randolph        | Florida       | Century            | Barbara Ritchin                    | New York       | Century            |
| Luene B. Torner                   | Florida       | Century            | James Jr. and Rita Van Skiver      | New York       | Century            |
| Madison Walker                    | Florida       | Mardi Gras         | Melissa, Karen and Max Treier      | New York       | Mardi Gras         |
| John and Evelyn Estey             | Georgia       | Century            | Bob and Marcia Ellis               | North Carolina | Mardi Gras         |
| Don and Lauri Carpenter           | Illinois      | Century            | Beth Porritt and David Poore       | North Carolina | Century            |
| James and Rose Curnutt            | Illinois      | Century            | Wayland and Judy Ramage            | North Carolina | Century            |
| Earl and Mary Forbes              | Illinois      | Mardi Gras         | Bev and Will Acord                 | Ohio           | Century            |
| Wayne Gerlock                     | Illinois      | Century            | Joe Andrejcek                      | Ohio           | Century            |
| Halla and Ronald Kotlarz          | Illinois      | Century            | Mike and Cindy Arent               | Ohio           | Japonica           |
| Jeffrey and Janice Larson         | Illinois      | Mardi Gras         | Nelda and Carl Baker               | Ohio           | Century            |
| Shirley and Ernie Launer          | Illinois      | Century            | Rich and Sally Bennett             | Ohio           | Mardi Gras         |
| Toby Mack and Marti DeGraaf       | Illinois      | Century            | Carl and Shirley Beynon            | Ohio           | Mardi Gras         |
| Bob and Diane Coward              | Indiana       | Century            | Boneva and Ed Blankenship          | Ohio           | Century            |
| Marjorie Farlow                   | Indiana       | Century            | Dale and Joan Bond                 | Ohio           | Century            |
| Mrs. Keith Ham                    | Iowa          | Century            | Margaret Bowman                    | Ohio           | Century            |
| Martha and Lynn Swearingen        | Iowa          | Century            | Joan and Scott Brown               | Ohio           | Century            |
| Janet and Stephen Bemiss          | Maryland      | Century            | Sue Ellen and James Brown          | Ohio           | Century            |
| Lisa and David Helm               | Maryland      | Mardi Gras         | Wilmer and Phyllis Bryan           | Ohio           | Mardi Gras         |
| Bonnie and Dwayne Lippy           | Maryland      | Mardi Gras         | Julie Buffenbarger                 | Ohio           | Japonica           |
| Nancy White                       | Maryland      | Century            | Sandra and Jim Buffenbarger        | Ohio           | Mardi Gras         |
| Annemarie and Edward DuBois       | Massachusetts | Century            | William and Janet Carlson          | Ohio           | Century            |
| Bill and Cynthia Alexander        | Michigan      | Century            | Sarah Carpenter                    | Ohio           | Century            |
| Rodney Allen and Paula MacKenzie  | Michigan      | Mardi Gras         | David, Aloma, and Brigitte Chorey  | Ohio           | Century            |
| Brent and Hedi Berry              | Michigan      | Mardi Gras         | Danny Cornelius and Donald Jones   | Ohio           | Century            |
| Jonathan and Ellen Fuhrman        | Michigan      | Century            | Kevin Coughlin                     | Ohio           | Century            |
| Robert and Karen Gallagher        | Michigan      | Mardi Gras         | Vester and Mary Jo Dupree          | Ohio           | President's Circle |
| Daniel Kuczewski                  | Michigan      | Century            | Larry and Susan Everett            | Ohio           | Japonica           |
| Gerald and Cheryl Kuczewski       | Michigan      | Century            | Carmella Frantz                    | Ohio           | Century            |
|                                   |               |                    | Diane and Ernest Gary              | Ohio           | Mardi Gras         |
|                                   |               |                    | James and Patricia Gates           | Ohio           | Mardi Gras         |
|                                   |               |                    | Nancy Guegold                      | Ohio           | Century            |
|                                   |               |                    | Carol and Jim Hayhurst             | Ohio           | Century            |

# The 2011 Annual Fund and Listing of Benefactors

|                                    |                |                    |
|------------------------------------|----------------|--------------------|
| Mary and Stanley Holmquist         | Ohio           | Century            |
| Ron and Norma Hufford              | Ohio           | Century            |
| Larry Hughes                       | Ohio           | Century            |
| Dorothy Kell                       | Ohio           | Century            |
| Karla Kiikka                       | Ohio           | Century            |
| Oscar and Laura Kniceley           | Ohio           | Century            |
| John and Patricia Lanning          | Ohio           | Century            |
| Jim and Janice Laver               | Ohio           | Century            |
| Bill and Patricia Loader           | Ohio           | Century            |
| Connie M. Lodge                    | Ohio           | Century            |
| Bill and Joanne Lyle               | Ohio           | Century            |
| Joy McFadden and Mary Beth Hackett | Ohio           | Mardi Gras         |
| Daniel Miecznikowski               | Ohio           | Century            |
| Jane and Tom Miller                | Ohio           | Century            |
| Sharon and Joe Miller              | Ohio           | Japonica           |
| Nancy Misel                        | Ohio           | Mardi Gras         |
| Janet Lee Mitchell                 | Ohio           | Mardi Gras         |
| Jane and Paul Morton               | Ohio           | Mardi Gras         |
| Hilda and Ronald Pfouts            | Ohio           | Century            |
| David Ray                          | Ohio           | President's Circle |
| Ken and Judy Rhoads                | Ohio           | Mardi Gras         |
| Squeek and Dorothy Rieker          | Ohio           | Mardi Gras         |
| Linda and Bryan Roberts            | Ohio           | Century            |
| Jeff and Jill Ross                 | Ohio           | Century            |
| Patricia Rutledge                  | Ohio           | Mardi Gras         |
| Miriam and August Simmons          | Ohio           | Century            |
| Sally Slattery                     | Ohio           | Century            |
| Lyle and Linda Stemen              | Ohio           | Japonica           |
| Mike and Lisa Strebler             | Ohio           | President's Circle |
| Lindy Thaxton                      | Ohio           | President's Circle |
| Jack and Elaine Thompson           | Ohio           | Century            |
| Rosalyn and David Velazco          | Ohio           | Century            |
| Julia Wall                         | Ohio           | Century            |
| Ralph and Linda Warne              | Ohio           | Century            |
| Lorraine and Mark Weinman          | Ohio           | Century            |
| Lynn Welker                        | Ohio           | Century            |
| Carl and Helen Westerh             | Ohio           | Century            |
| Thomas and Carolyn White           | Ohio           | Century            |
| Frank and Vicki Wollenhaupt        | Ohio           | Mardi Gras         |
| Barbara Wyrick                     | Ohio           | Century            |
|                                    |                |                    |
| Vivian and Mark Dorsett            | Oklahoma       | Century            |
| Mark Thompson                      | Oklahoma       | Century            |
|                                    |                |                    |
| Joyce and W.T. Dawson              | Oregon         | Century            |
| Beverly and Ed Groshens            | Oregon         | Century            |
|                                    |                |                    |
| Bob and Karen Arnold               | Pennsylvania   | Mardi Gras         |
| Brad and Denise Bernstein          | Pennsylvania   | Century            |
| Ruth and Pearley Cunningham        | Pennsylvania   | Century            |
| Karen Friedly                      | Pennsylvania   | Century            |
| Patricia and Robert Harrison       | Pennsylvania   | Century            |
| Richard and Leslie Taylor          | Pennsylvania   | Century            |
| Loretta Weeks                      | Pennsylvania   | Century            |
|                                    |                |                    |
| Helen and Steve Klemko             | South Carolina | President's Circle |
|                                    |                |                    |
| Edwin and Rosa Nixon               | Tennessee      | Century            |
| Suzanne Wagar                      | Tennessee      | Mardi Gras         |
|                                    |                |                    |
| Sandra and William Bridwell-Walker | Texas          | Century            |
| Sue and Bob Cameron                | Texas          | Century            |
| Louise Carson                      | Texas          | Century            |
| Phillip and Rosalba Cook           | Texas          | Century            |
| Robert and Margaret Downing        | Texas          | President's Circle |
| Ronald Engler                      | Texas          | Century            |
| John and Lisa Lacy                 | Texas          | Mardi Gras         |
| Max Miller                         | Texas          | Century            |
| Freeman and Jeannie Moore          | Texas          | Japonica           |
| Mary Pfanenstiel                   | Texas          | Century            |
| Daniel and Diane Shimer            | Texas          | Mardi Gras         |

|                              |               |            |
|------------------------------|---------------|------------|
| Arthur and Vicki Simon       | Texas         | Mardi Gras |
| Amy and Kay Waldorf          | Texas         | Century    |
|                              |               |            |
| Shelley Cole and Alex Citron | Virginia      | Century    |
| Tarzan Deel                  | Virginia      | Japonica   |
| Jim Jones                    | Virginia      | Japonica   |
| Edward and Susan Shaw        | Virginia      | Century    |
| Ann Wharton                  | Virginia      | Century    |
|                              |               |            |
| Patricia Christiansen        | Washington    | Century    |
| Robin and Timothy Cook       | Washington    | Century    |
| Swede and Kay Larsson        | Washington    | Century    |
| Charles and Mary E. McKinney | Washington    | Century    |
|                              |               |            |
| Greg Vass                    | Washington DC | Japonica   |
|                              |               |            |
| Michael Lee                  | Wisconsin     | Century    |

NCC welcomes the  
following new member


Shelly Yergensen Utah

• HEISEY • FIESTA • LENOX • ROSEVILLE • FENTON •  
CARNIVAL • DEPRESSION • FOSTORIA • WESTMORELAND •

**Spring Show and Sale**  
Featuring  
Depression Era Glass and American Made  
Glassware, China & Pottery

**Saturday, April 14, 2012**  
**10:00 a.m. to 4:00 p.m.**

**NORCO FIRE COMPANY**  
144 W. Schuylkill Road (Rte PA 724) Pottstown, PA



**LIBERTY BELL  
GLASS CLUB**

*Glass Identification 1 PM to 4 PM for Customers*  
*For information, contact: 610.666.7033*  
*or: LBGlassClub@verizon.net*

**Admission \$3.50**  
*(50¢ off with this card)*

• DUNCAN-MILLER • PYREX • FIRE KING • PATTERN GLASS • CAMBRIDGE •

**Auction Manager's Note:** The PLC snack bar will also be open this year from 9:00 AM on. There is another event that will be going on at PLC simultaneously with the auction.



**Back by popular demand** are Theo's scrumptious boxed lunches, delivered right to PLC in time for the lunch break. So if you don't want to hassle running out to get something and/or want a nice healthy alternative to fast food, we've got it for you. Tax and gratuity are all included in the purchase price.

**Ordering:** A Theo's representative will be in the PLC lobby from 9:00 AM to 10:00 AM on Saturday, day of the auction, to take everyone's orders. You must have cash or check and pay at time of order. They will not be able to take credit cards. Just fill out the handy order form and give it to the Theo's representative with your payment. It's that easy!

## **Prepared Boxed Meals:**

### **Sandwiches: \$9.00**

*All sandwich boxed meals include choice of broccoli raisin salad or fresh fruit, chips, cookie and one bottled water or can of soda.*

**Roast Beef & Cheddar** - on Cracked Black Pepper Bread with lettuce, tomato, and horseradish sauce

**Chicken Salad Croissant** - with lettuce and tomato

**Ham & Swiss on Rye** - with lettuce, tomato, and mustard

**Turkey, Bacon, & Mozzarella** - on Whole Wheat with lettuce, tomato, and mayonnaise

### **Salads: \$9.00**

*All salad boxed meals come with dinner roll or homemade French bread, cookie and one bottled water or can of soda.*

**Chicken Caesar Salad** – mixed greens w/ caesar dressing, parmesan cheese, kalamata olives, pepperoncinis, and grilled breast of marinated chicken.

**Greek Salad** – *our signature salad* – iceberg and romaine lettuce, with onions, tomatoes, cucumbers, marinated mushrooms, feta, kalamata olives, pepperoncinis, croutons and our Greek vinaigrette.

**Smoked Turkey & Mixed Nut Salad** - mixed greens with smoked turkey, mixed nuts, raisins, shredded mozzarella, tomatoes, cucumbers, onions w/choice of dressing.

### **Additions:**

**Cup of Soup: \$2.00**

**Side Salad w/choice of dressing: \$2.25**

**Additional Beverage: \$1.00**

**[www.theosrestaurant.us](http://www.theosrestaurant.us)**

# BOXED MEAL ORDER FORM

Name: \_\_\_\_\_

Cell Phone: \_\_\_\_\_

Cash or check only to accompany this order form. Orders accepted between  
9:00 AM & 10:00 AM day of the auction at PLC by Theo's representative.

## Sandwiches \$9.00 (delivery and gratuity included)

*All sandwich boxed meals include: choice of broccoli raisin salad or fresh fruit, chips, cookie, and one bottled water or can of soda.*

|                           | Quantity                                  |                 | Select One of the Following:              |
|---------------------------|---|-----------------|---|
| Roast Beef & Cheddar      | <input style="width: 100%;" type="text"/> | Fresh Fruit     | <input style="width: 100%;" type="text"/> |
| Chicken Salad Croissant   | <input style="width: 100%;" type="text"/> | Broccoli Raisin | <input style="width: 100%;" type="text"/> |
| Ham & Swiss on Rye        | <input style="width: 100%;" type="text"/> |                 |   |
| Turkey, Bacon, Mozzarella | <input style="width: 100%;" type="text"/> |                 |   |

## Salads \$9.00 (delivery and gratuity included)

*All salad boxed meals come with dinner roll or homemade French Bread, cookie, and one bottled water or can of soda*

|                                 | Quantity                                  |
|---------------------------------|---|
| Chicken Caesar                  | <input style="width: 100%;" type="text"/> |
| Greek Salad                     | <input style="width: 100%;" type="text"/> |
| Smoked Turkey & Mixed Nut Salad | <input style="width: 100%;" type="text"/> |

|                   |                                | Quantity                                  |
|-------------------|--------------------------------|---|
| <b>Additions:</b> | Soup<br>\$2.00                 | <input style="width: 100%;" type="text"/> |
|                   | Vegetable<br>Cream of Broccoli | <input style="width: 100%;" type="text"/> |

Please select type of salad dressing and insert a numerical number for quantity of each side salad with this chosen dressing.

|   |                |   |                  |   |
|---|----------------|---|------------------|---|
| <b>Side Salad with Dressing</b><br>\$2.25 | Ranch          | <input style="width: 100%;" type="text"/> | Italian          | <input style="width: 100%;" type="text"/> |
|   | Fat-Free Ranch | <input style="width: 100%;" type="text"/> | Fat-Free Italian | <input style="width: 100%;" type="text"/> |
|   | French         | <input style="width: 100%;" type="text"/> |                  |   |

**Beverages:** Please select type of beverage and insert a numerical number for quantity of each beverage selected. An additional charge of \$1.00 will be assessed for each additional beverage ordered beyond that included in the boxed meal.

|            |   |               |   |
|------------|---|---------------|---|
| Pepsi      | <input style="width: 100%;" type="text"/> | Bottled Water | <input style="width: 100%;" type="text"/> |
| Diet Pepsi | <input style="width: 100%;" type="text"/> | Sierra Mist   | <input style="width: 100%;" type="text"/> |

# ONLY QUESTIONS - NO ANSWERS

By Frank Wollenhaupt ([fewvic303@sbcglobal.net](mailto:fewvic303@sbcglobal.net))

My wife and I just finished two exciting Saturdays in Cambridge, cleaning the museum glass for the 2012 tourist season. The glass and shelves weren't too dirty, just a little bit dusty.

You might wonder why I would say "exciting" when I was talking about cleaning. The exciting part was the ability to touch and look at some of the best glass Cambridge had to offer. It is one thing to see the photos in a book but it is another thing to be able to hold the glass and look it over completely. I look at the cleaning as a learning experience.

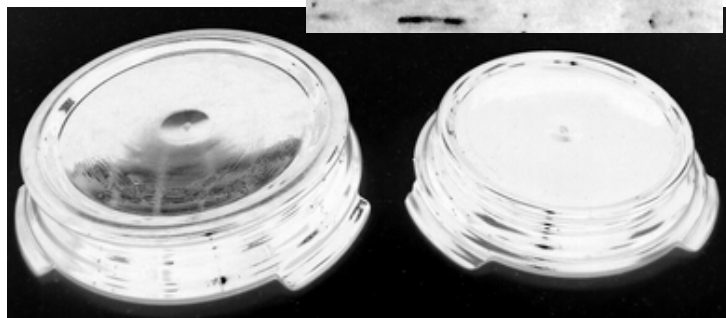
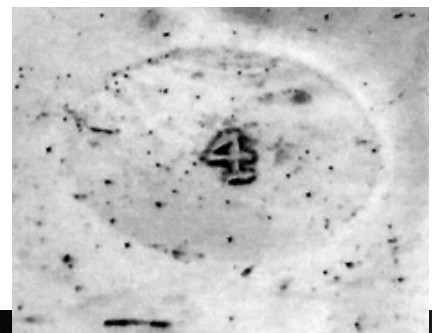
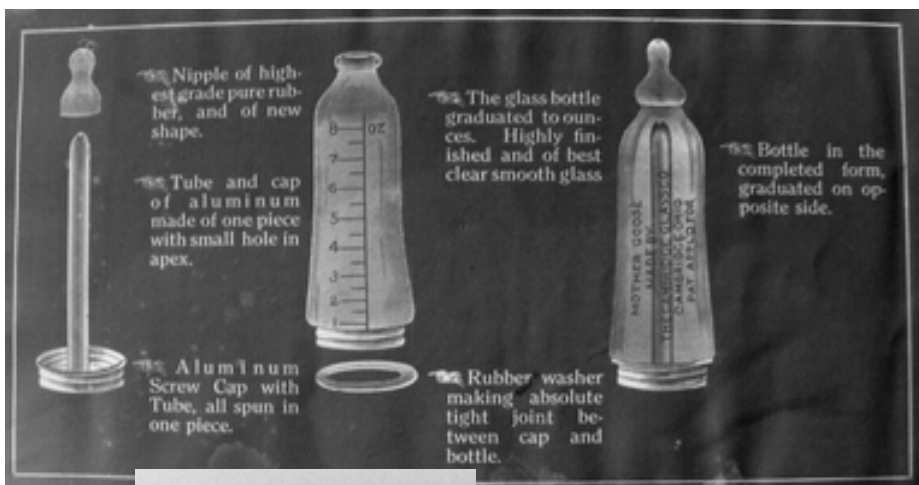
This year we started in the Near Cut section and worked our way around from there. One of many things we noticed, is we need to add some different Near Cut items. If you have something unusual in Near Cut, you might drop Cindy a note and let her know what you have.

Did you know that Cambridge made a baby bottle called "The Mother Goose Nursing Bottle"? I took photos of the brochure to show all the parts and what Cambridge had to say about the bottle. They say it is protected by patents. Might be fun to try and run down these patents and see who patented it.

I also noticed that some of the black bases used for bowls had numbers on them. I think I saw a number 3 and 4. The inside ring on the 3 base measured about 3 ½ inches and the 4 measured about 4 ½ inches. One of the bases also had a Cambridge Glass factory sticker on the underside so I do believe they are really Cambridge. I doubt that all the black bases were made by Cambridge but at least the ones with a number on them can be verified as Cambridge.

So next February or March, if you find yourself in the Cambridge area on vacation, stocking your booth or shopping, give Cindy a call and see about helping to clean the glass in your museum. Who knows, you might learn something new about Cambridge.

This past month I was running around at a flea market and found a Federal Glassware Catalog No. 60. It was only a few dollars so I purchased it. Not knowing what interesting thing I would discover inside. For those of you that don't know Federal, its main office and factory is in Columbus,



## ONLY QUESTIONS - NO ANSWERS - (continued)

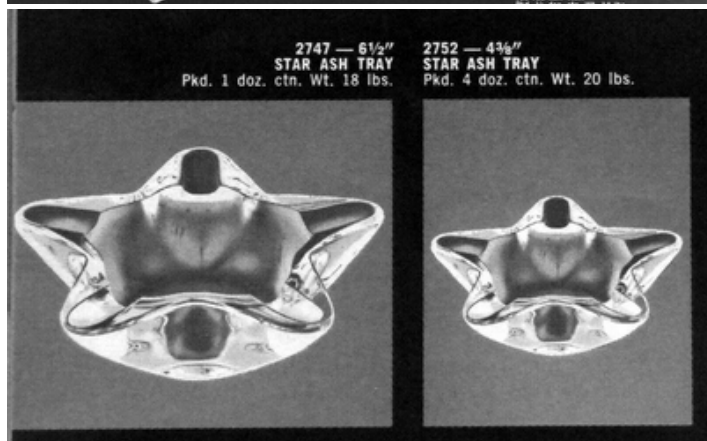
Ohio. Most if not all their glass is machine made. Not the fine quality we expect from Cambridge but a well made glass for everyday use. On page 22, I discover the (A-41) Starbrite 5 pc ash tray set. "In Federal's un-matched, flame polished heavy crystal. Each set consists of one jumbo-sized 6 1/2" Star Ash Tray and four matching 4 3/9" Star ash trays: packed in attractive display carton. 6 sets packed in R/S carton. Weight 23 lbs." The Federal 6 1/2" ashtray is an exact match to the 6 1/2" Cambridge P.731 (Pristine) ashtray. The smaller Federal ashtrays look a bit different but it's hard to say.

Now the question is, who copied who? Or is this the same mold that they purchased from Cambridge?

The catalog isn't dated and the only clue I have is that they aren't using postal zip codes which went into effect July 1963 and they don't list phone area codes, just the phone exchange names.

If anyone has additional information about Federal glass, please email it to me.

Keep the cards and letters coming.....till next month, Collect Cambridge.



## Study Group Reports

### Study Group #16

#### The Elegant Glass Collectors

The Elegant Study Group met for their annual Christmas Party at Loretta Weeks' home in Pennsylvania on December 19<sup>th</sup>, 2011. In attendance were Loretta Weeks, Bill and Yvonne Dufft, Gail and Paul Duchamp, Ken and Jane Filippini, Rick and Cindy Jones along with Cindy's Mom (always a treat) Irene Jagodnik, Alex Wolk, Janice Wolk, Walter Lee and Myrle Scott.

Loretta's home was beautifully decorated for the holidays which put us all in the Christmas spirit. We started the party with delicious appetizers and catch up chatter, discussing the delicious food and glass of course!

We had our Christmas grab bag and exchange gifts. It is a fun time and some beautiful items were given. Among the items were a gorgeous amber springtime vase, a moonlight blue piece of caprice and many other pieces of glass and different items. This is the time for giving and we always enjoy our exchange.

On to our business portion with the thoughts of fundraisers. We then picked out the next meeting date and went on to have a lovely meal Loretta had planned for us.

It was a beautiful day with great show and tell. Rick and Cindy started us off with several etched signs, a gorgeous enamel "Last Call" Ball Decanter. Their cobalt silver overlay Decanter, reading "Yow-Zir" "We Got Moosic" was stunning and their amusing Tally Ho goblets 18 oz. enameled with "Lips that touch liquor shall never touch mine" and other different saying were very nice!

Bill and Von enjoyed showing us a pink crackle plate, 3104 stem in mandarin gold, 1242 Candlelight etch vase, an 8" vase with Chintz 3 etch and an Everglades Daffodil Springtime crystal vase. All their items were spectacular. Loretta, our host, brought out an exquisite crown Tuscan ball pitcher 64 oz. with black enamel decoration, just breathtaking. Alex brought along his new find of a 3400 line bowl, double pinched with an unknown cutting which brought us all to wondering this next question.

Dear Mr. Answer Man:

The Cambridge pieces I have that have cuttings seem heavier than other Cambridge pieces. Did they use more "glass" when a piece was going to be cut and do they have lighter "lead content"?

We will all wait for the answer and discover yet another valuable piece of information in the glass world.

Loretta always has special gifts for the men as well as the women and goes all out planning everything. She has always made us feel welcomed into her home and at Christmas it has a special uplifting feeling with the holiday season upon us.

Thank you Loretta. We all appreciate it and love coming to your home for the Christmas parties.

Respectfully yours, Gail Duchamp, Secretary



# NCC Books for Sale

Published by NCC • Members receive a 10% discount

| TITLE   |  | REGULAR PRICE | MEMBER PRICE   |
|---|--|---------------|----------------|
| <b>1910 NearCut Catalog Reprint</b>                           | 108 pages, paperback, no price guide                               | \$14.95       | <b>\$13.45</b> |
| <b>1927-29 Catalog Reprint</b>                                | 66 pages, paperback, no price guide, includes identification guide | \$9.95        | <b>\$8.95</b>  |
| <b>1930-34 Catalog Reprint</b>                                | 250 pages, paperback with 2000 price guide                         | \$14.95       | <b>\$13.45</b> |
| <b>1930-34 Catalog Index</b>                                  | Index for above  | \$2.00        | <b>\$1.80</b>  |
| <b>1949-53 Catalog Reprint</b>                                | 300 pages, paperback, no price guide                               | \$19.95       | <b>\$17.95</b> |
| <b>Cambridge Colors II (New)</b>                              | Hardcover with price guide   | \$19.99       | <b>\$17.99</b> |
| <b>Caprice</b>  | 200 pages, paperback, no price guide                               | \$19.95       | <b>\$17.95</b> |
| <b>Decorates</b>  | 136 pages, paperback, no price guide                               | \$14.95       | <b>\$13.45</b> |
| <b>Etchings (2nd Edition)</b>                                 | 102 pages, paperback, no price guide                               | \$17.95       | <b>\$16.15</b> |
| <b>Etchings, Non-Catalogued</b>                               | 70 pages, paperback, no price guide                                | \$12.95       | <b>\$11.65</b> |
| <b>Etchings: Blossomtime</b>                                  | 26 pages, paperback, no price guide                                | \$7.95        | <b>\$7.15</b>  |
| <b>Etchings: Candlelight</b>                                  | 30 pages, paperback, no price guide                                | \$7.95        | <b>\$7.15</b>  |
| <b>Etchings: Chantilly</b>                                    | 44 pages, paperback, no price guide                                | \$7.95        | <b>\$7.15</b>  |
| <b>Etchings: Diane</b>  | 53 pages, paperback, no price guide                                | \$7.95        | <b>\$7.15</b>  |
| <b>Etchings: Elaine</b>                                       | 64 pages, paperback, no price guide                                | \$9.95        | <b>\$8.95</b>  |
| <b>Etchings: Portia</b>                                       | 57 pages, paperback, no price guide                                | \$7.95        | <b>\$7.15</b>  |
| <b>Etchings: Wildflower</b>                                   | 42 pages, paperback, no price guide                                | \$7.95        | <b>\$7.15</b>  |
| <b>Rock Crystal Engravings</b>                                | 119 pages, paperback, no price guide                               | \$17.95       | <b>\$16.15</b> |
| <b>Rock Crystal Engravings (Listings)</b>                     | Companion to above; lists all pieces in all patterns               | \$9.95        | <b>\$8.95</b>  |
| <b>Rock Crystal 1940 Illustrated Catalog &amp; Price List</b> |  | \$14.95       | <b>\$13.45</b> |
| <b>Rose Point - Second Edition</b>                            | 146 pages, paperback, no price guide                               | \$19.95       | <b>\$17.95</b> |
| <b>Pharmaceutical Catalog No.8 1915-1920 Reprint</b>          | 68 pages, paperback, no price guide                                | \$9.95        | <b>\$8.95</b>  |

## How to Order by Mail or from the NCC Website

Send orders to:

NCC • PO Box 416 • Cambridge, OH 43725

OHIO RESIDENTS PLEASE ADD 7% SALES TAX

Please include your name, complete mailing address and your phone number or e-mail address.

Payments by check or Money Order only, payable to NCC.

Books may also be purchased on the NCC website, [www.cambridgeglass.org](http://www.cambridgeglass.org). Major Credit Cards are only accepted for web purchases.

## SHIPPING/HANDLING:

All items (including books) except Scottys:

|                              |                |
|------------------------------|----------------|
| <b>Total order up to \$6</b> | <b>\$3.50</b>  |
| <b>\$6.01 to \$25.00</b>     | <b>\$6.50</b>  |
| <b>\$25.01 to \$50.00</b>    | <b>\$7.50</b>  |
| <b>\$50.01 to \$75.00</b>    | <b>\$8.50</b>  |
| <b>Over \$75.00</b>          | <b>\$11.50</b> |



# NCC Events

## 2012 Convention

### June 21-24, 2012

*If you know about any upcoming glass shows or other glass events, please pass the word on to us at least six to eight weeks before the show dates. These listings are free of charge.*

## DEALER DIRECTORY

**Joanne & Janine Bender**  
Specializing in Depression Era Glassware  
We Buy & Sell

PO Box 1007  
Pebble Beach, CA 93953

831-647-9957      [jjdbender@aol.com](mailto:jjdbender@aol.com)  
831-647-9949      [www.benderglass.com](http://www.benderglass.com)

**J & L Treasures**  
Specializing in Depression Glass  
Heisey, Cambridge, Fostoria, Morgantown,  
Tiffin, etc.

Linda Kilburn  
PO Box 1257  
Burlington, CT 06013

860-673-4088 (Answering machine - leave message)

**Ohio Valley Antique Mall**  
7285 Dixie Highway (Route 4)  
Fairfield, OH 45014  
Cincinnati's Largest Multi-Dealer Antique Mall  
Hours: DAILY 9:00 a.m. - 9:00 p.m.

513-874-7855  
[www.ohiovalleyantiquemall.com](http://www.ohiovalleyantiquemall.com)  
[cfaxon@ohiovalleyantiques.com](mailto:cfaxon@ohiovalleyantiques.com)

## Glass Shows

**March 10-11, 2012**

Metroplex Glass Show & Sale  
Grapevine, TX  
Call: 972-672-6213  
More Info: [meyerantiques@juno.com](mailto:meyerantiques@juno.com)  
[www.meyershows.com](http://www.meyershows.com)

**March 10-11, 2012**

20-30-40's Society DG Show & Sale  
Northlake, Ill  
Call: 630-851-4504  
More Info: [20-30-40society.org](http://20-30-40society.org)

**March 16-17, 2012**

Heart of America DG & Pottery Show  
Independence, MO  
Call: 816-308-7495  
Email: [hoagc@juno.com](mailto:hoagc@juno.com)  
More Info: [www.hoagc.org](http://www.hoagc.org)

**March 31-April 1, 2012**

Lincoln Land DG & Pottery Show and Sale  
Springfield, Illinois  
Call: 217-546-4790  
Email: [margaret\\_davis37@sbcglobal.net](mailto:margaret_davis37@sbcglobal.net)  
More Info: [www.LincolnLandGlassClub.com](http://www.LincolnLandGlassClub.com)

**April 14, 2012**

Liberty Bell Glass Club Spring Show & Sale  
Pottstown, Pennsylvania  
Email: [LBGlassClub@verizon.net](mailto:LBGlassClub@verizon.net)  
Call: 610-666-7033

**April 14, 2012**

Nutmeg Depression Glass Club All Glass Show & Sale  
Southington, Connecticut  
Email: [lisabert@cox.net](mailto:lisabert@cox.net)  
Call: 860-643-5353

**April 21-22, 2012**

Great Lakes Depression Glass & Pottery Show & Sale  
Madison Heights, Michigan  
More Info: [www.depressionglassclub.com](http://www.depressionglassclub.com)

**April 28 - 29, 2012**

Del-Mar-Va Depression Glass Club  
Glass, China & Pottery Show & Sale  
Lanham, Maryland  
Call: 301-565-2361

**April 28 - 29, 2012**

Rocky Mountain Depression Glass Society  
Array of Color 36th Annual Show & Sale  
Castle Rock, Colorado  
More Info: [www.rmdgs.com/](http://www.rmdgs.com/)  
Call: 303-722-5446

# DEALER DIRECTORY

**Dealer Directory - \$24 for 12-months, size limited by box (see below). Includes listing on NCC website.**

## Advertising Rates:

1/8 page \$15    1/4 page \$20  
1/2 page \$30    Full page \$50  
(plus \$5 per photograph)

Electronic submissions should be emailed to:

[ncccrystalball@charter.net](mailto:ncccrystalball@charter.net)

Use Word. Mailed submissions and all payments should go to PO Box 416, Cambridge, OH 43725. Deadline is 10th of preceding month. Ads must be paid in advance. Show listings are FREE; send info to PO Box or e-mail address 60 days before event.

### ALADDIN LAMP BOOKS

Aladdin Electric Lamps  
SB, 229 pp., \$24.95 to C.Collectors PP.  
J.W. "Bill" Courter  
brtknight@aol.com  
550 Pioneer Ln. Phone 270-488-2116  
Calvert City, KY 42029

### Max Miller

Elegant Glassware • Books • Fiesta  
...and more  
THE MARKET PLACE  
(713) 467-0450 - BUS 10910 OLD KATY RD.  
(713) 461-1708 - RES HOUSTON TX 77043  
MMXGLASS@aol.com

### Cheshire Cat Antiques

Specializing in elegant depression to mid-century era glass and vintage kitchen glass.

Francee Boches > 305-884-0335  
fboches@cheshirecatantiques.com

Pull up a Mouse!  
Shop 24 hrs a day at  
[cheshirecatantiques.com](http://cheshirecatantiques.com)



### BAKER FAMILY MUSEUM

805 CUMBERLAND ST.  
CALDWELL, OHIO 43724  
740-732-6410

[bakermuseumnellbaker@msn.com](mailto:bakermuseumnellbaker@msn.com)

Wed & Thurs 9-4; Fri - Sat 9-5

## Classified Ads - Reach over 1,000 avid collectors of Cambridge Glass

### CRYSTAL LADY

1817 Vinton St. Omaha, NE 68108  
Bill, Joann and Marcie Hagerty  
Shop 402-341-0643 Home 402-391-6730

Specializing in Elegant Glass & Collectibles  
[www.crystalladyantiques.com](http://www.crystalladyantiques.com)

Glen & Carolyn Robinson  
White Rose Antiques  
Specializing in Depression Era Glassware

2454 McFarland Road  
York, SC 29745

803-684-5685  
[gandcrobinson@aol.com](mailto:gandcrobinson@aol.com)  
[whiteroseglassware.com](http://whiteroseglassware.com)

### CRYSTALLINE COLORS

Cambridge • Fostoria • Elegant Glass  
Penny Court Mall, Cambridge - 2 booths  
Riverfront Antique Mall  
New Philadelphia, OH (I-77, exit 81)  
Booth #'s 626 and 616

Lynne R. Franks 216-661-7382

### GLASS FROM THE PAST

Maureen Gillis



[www.glassfromthepast1.com](http://www.glassfromthepast1.com)  
email: [glassfromthepast1@comcast.net](mailto:glassfromthepast1@comcast.net)

### Cherished Collectibles

Shopping 24 hours in our online store  
Glassware, Figurines, Collectors' Plates

[www.cherishedcollectibles.com](http://www.cherishedcollectibles.com)  
Elegant and Depression Era Glass

### TWEAK COLLECTIBLES

Specializing in Elegant Glass  
BUY & SELL  
WANTED: CAMBRIDGE TURKEYS  
417-742-3653  
[btummons@aol.com](mailto:btummons@aol.com)

### VIRTUALATTIC AT THE GLASS CHALET

SPECIALIZING IN ELEGANT DEPRESSION ERA GLASS  
Sandra L. Bridwell-Walker PO Box 3448  
William P. Walker Cleburne TX 76033-3448  
Phone: 817-202-0940 [www.virtualattic.com](http://www.virtualattic.com)  
Sandy's Cell: 817-559-0328 [virtualattic@sbcglobal.net](mailto:virtualattic@sbcglobal.net)  
theglasschalet@sbcglobal.net  
Bill's Cell: 817-357-7084

### Daugherty's Antiques Jerry and Shirley Antiques & Collectibles-Mostly Glass

[www.daughertys-antiques.com](http://www.daughertys-antiques.com)  
email: [sdaugh2515@daughertys-antiques.com](mailto:sdaugh2515@daughertys-antiques.com)

Shows & Mail Orders 2515 Cheshire North  
402-423-7426 (evenings) Lincoln, NE 68512

### THE GLASS HOUSE ANTIQUE MALL Furniture, Pottery, Glass Antiques and Collectibles I-70 Exit 146, East on SR 40

8825 E. Pike  
Norwich OH 43767 TEL 740-872-3799

### Milbra's Crystal Buy & Sell

Replacement and Matching  
Milbra Long (817) 645-6066  
Emily Seate (817) 294-9837  
PO Box 784  
Cleburne TX 76033

Specializing in  
Cambridge  
Fostoria, Heisey  
and others

E-mail: [longseat@sbcglobal.net](mailto:longseat@sbcglobal.net)  
[www.fostoriacrystal.com](http://www.fostoriacrystal.com)

### ISAACS ANTIQUES

(740) 826-4015

See our booths in Penny Court Mall in  
Cambridge and at White Pillars Antique Mall  
(Route 40, one mile west of  
I-70 Norwich, OH • Exit #164)

### The American Bell Association International, Inc.

7210 Bellbrook Drive  
San Antonio, TX 78227-1002  
[www.americanbell.org](http://www.americanbell.org)



### MARGARET LANE ANTIQUES

2 E. Main St. New Concord, OH 43762  
Lynn Welker (740) 826-7414

Cambridge Glass Matching Service  
Hours: Mon-Fri 10-12 AM, 1-5 PM  
or by appointment

### Our House Antiques



Linda and David Adams  
Las Vegas, NV  
1-800-357-7169

[www.OurHouseAntiques.com](http://www.OurHouseAntiques.com)  
email: [David@OurHouseAntiques.com](mailto:David@OurHouseAntiques.com)

National Cambridge Collectors, Inc.  
PO Box 416  
Cambridge OH 43725

website: [www.cambridgeglass.org](http://www.cambridgeglass.org)  
e-mail: [ncccrystalball@charter.net](mailto:ncccrystalball@charter.net)

## Friends of Cambridge – Annual Fund

NCC exists through member giving using an Annual Fund system to raise operating funds and to ensure the preservation of Cambridge glass for future enthusiasts. The Annual Fund uses a common member "renewal" date and NCC sends out Annual Fund materials to everyone once a year during March/April. There are no monthly reminders or monthly renewal dates. The Annual Fund is NCC's primary means of support and all Annual Fund gift recognition levels are per household and include membership for all adults within the household. Additionally, each household will receive a subscription to the Crystal Ball newsletter, unlimited admissions to the museum, and rights to vote in elections for the Board of Directors. Multiple households at the same address are welcomed. NCC is a 501C(3) organization and Annual Fund gifts are allowed as a tax deduction under Section 170 of the Internal Revenue Code.

### Levels of Membership

|                         |         |
|-------------------------|---------|
| Patron                  | \$35    |
| Benefactor - Century    | \$100   |
| Benefactor - Mardi Gras | \$200   |
| Benefactor - Japonica   | \$500   |
| President's Circle      | \$1,000 |

President's Circle includes Convention registration for two members in the household and one copy of any new NCC publications.

### *The National Museum of Cambridge Glass*

Located at 136 S. 9th Street  
in downtown Cambridge,  
Ohio

**Closed for the  
season  
see you in April**

