

Cambridge Crystal Ball

Published monthly by National Cambridge Collectors, Inc.
to encourage and report the discovery of the elegant and boundless product of the
Cambridge Glass Company of Cambridge, Ohio

Issue No. 376

August 2004

See Crystal Ball photos on-line, in full color at www.crystalballphotos.org (password on page 5)



Important Correction

The August Quarterly Meeting will be held on Saturday, August 21st. An incorrect date was published in last month's Crystal Ball.

See page 8 for more details.

Once again, a successful NCC Convention! This year, about 190 members registered, and enjoyed a great weekend of friendship, education, good food and beautiful glass. Pictured above are (l to r) Sheila Chambers, Bill Chambers, Isabel Giroux, Albert Giroux, Mary Carroll and Jack Carroll

*Inside... New Board Members,
2004 Convention Report & Photos*

National Cambridge Collectors, Inc.

PO Box 416
Cambridge, OH 43725-0416

Please notify us immediately of any address change.

Contacts:

President Ken Filippini	(201) 670-0990
Secretary Larry Everett	(937) 675-6491
Crystal Ball Editor Alex Citron	(434) 296-2531
NCC Museum (phone)	(740) 432-4245
(fax)	(740) 439-9223

Membership

Membership is available for individuals at \$20.00 per year, and an additional \$3.00 for associate members (12 years of age and older, residing in the same household). All members have voting rights, but only one issue of The Crystal Ball will be mailed to each member household.

Multi-year memberships are available:
2 years for \$38.00; 3 years for \$56.00.

2003-2004

OFFICERS AND COMMITTEE CHAIRS

President	Ken Filippini
Vice-President	Sharon Miller
Secretary	Larry Everett
Treasurer	Dennis Snyder
Sergeant-at-Arms	Rick Jones

Acquisitions	Lynn Welker
Archives	Mark A. Nye
Budget & Finance	Mike Strebler
By-Laws	Alex Citron
Crystal Ball	Alex Citron
Endowment	Rick Jones
Facilities	Carl Beynon
	Joe Miller
Grants & Fundraising	Sharon Miller
Long-Range Planning	Doug Ingraham
Member Services	George Stamper
Membership	Linda Adkins
Membership Development	Freeman Moore
Museum	Cindy Arent
Nominating	Rick Jones
Program	David Ray
Projects	Bill Hagerty
Publications	Mark A. Nye
Publicity	Lorraine Weinman
Study Group Advisor	Judy Rhoads
Technology/Webmaster	Linda Roberts
Auction	Dorothy Rieker
	Squeek Rieker
	Lynn Welker
Convention	Shelley Cole
Glass Show & Sale	Mary Beth Hackett
	Joy McFadden
Glass Dash	Larry Everett
	Susan Everett

Board of Directors:

Cindy Arent; Shelley Cole; Larry Everett;
Ken Filippini; Rick Jones; Sharon Miller; Mark Nye;
Dennis Snyder; Mike Strebler; Lorraine Weinman;
Lynn Welker; Frank Wollenhaupt

Cambridge Crystal Ball

The official publication of National Cambridge Collectors, Inc., a non-profit corporation with tax-exempt status. Published monthly for the benefit of its members. All rights reserved; reproduction in whole or part without written permission of National Cambridge Collectors, Inc., and the author is prohibited.

Executive Editor

Alex P. Citron

Research Editor

Les Hansen

Advertising Manager

Jeannie Moore

Circulation

Sharon & Joe Miller

Advertising Rates

Display Advertising (camera-ready):

Full Page	\$50.00
3/4 Page	\$40.00
1/2 Page	\$30.00
1/4 Page	\$20.00
1/8 Page	\$15.00

(Add \$5.00 for each photograph)

Classified Advertising:

10 cents per word; \$2.00 minimum
(Abbreviations and initials count as words)

Dealer Directory:

\$24.00 for twelve-month contract
Text limited by standard box size (see page 19)
Includes FREE listing on NCC website

- Payment in full must be received before advertising will be run.
- Cambridge Crystal Ball and National Cambridge Collectors, Inc., assumes no responsibility for items advertised and will not be responsible for errors in price, description or other information.
- Advertising copy may be submitted to us by e-mail or regular mail as follows:

Ad copy may be sent by e-mail to NCCcrystalball@aol.com, and must be sent by the 10th of the month preceding publication. Ad will not be run until your check has been received at our PO Box.

Ad copy may be sent by regular mail, along with your check, to our PO Box. Copy sent this way must arrive at our PO Box by the 1st of the month preceding publication.

Submissions to

The Crystal Ball

By mail: P.O. Box 416 Cambridge, OH 43725

E-mail: NCCcrystalball@aol.com

(This E-mail address is for newsletter business, inquiries and submissions only)

Deadlines:

Ad copy by e-mail: 10th of preceding month
Ad copy by regular mail: 1st of preceding month
Articles, study group reports, etc.: 10th of preceding month

MEMBERS ONLY

Visit the "Members Only" section of the NCC's website at cambridgeglass.org/NCCmembers

Features available only to NCC Members include:

Reprints of Research Articles

Minutes of Board Meetings

User name: NCC

Password: TriangleC



President's Message:

Fantastic Memories

Each year we wait with anticipation for Convention, it comes, it goes, and afterwards we are left with those FANTASTIC MEMORIES. For those of you who attended this year, you know what I mean, for those who were unable to join us, let me try to convey some of this year's experience.

Thanks to convention Chair, Shelley Cole, the festivities got underway on Wednesday evening with the reestablishment of the poolside picnic. Over 100 NCC members met at the Days Inn for lively conversation, fried chicken and a drink or two. Absolutely a great way to renew old friendships, and establish new ones.

One of Thursday's high points was a field trip to the National Imperial Glass Museum. First time attendee, Joanne Berringer, said "it was wonderful". Another high point was an incredibly educational, professionally delivered program on Cambridge Candelabra by David Ray. The highly attended program will certainly be one of those FANTASTIC MEMORIES - thanks David.

On Friday the activity level intensified. It began with an early morning lineup at the Pritchard Laughlin Civic Center, for glass show entrance numbers. A lively Joint Study Group meeting was chaired by Judy Rhoads. At 2:00

the Glass Show opened; thanks to Show Chairs Mary Beth Hackett and Joy McFadden the show was a huge success. Numerous high-quality dealers displayed a dazzling array of Cambridge glass, which was a satisfying feast for all that attended. FANTASTIC MEMORY, no doubt. Many thanks to Bill Dufft and his crew for running a very successful Silent Auction, and thanks to all the donors. The show was followed by the President's Reception, Banquet and Annual Meeting. At the Annual Meeting, Les Hanson gave a heartfelt thank you to Rick Jones for his many years of service as NCC's President. A rousing standing ovation followed. As I am sure you are all aware, Rick felt that after 8 years it was time to turn over the reins. I am sure you will all agree that a mere thank you is hardly enough. Rick has led NCC through both good and bad times, has been generous, diligent, a visionary, a true leader in every sense of the word. Even though it is not enough: from all our hearts - Thank you Mr. Jones!

Saturday began with the Glass Dash, a unique, frenetic glass buying opportunity. Thanks to Larry & Susan Everett and their crew, the Dash is one of those FANTASTIC MEMORIES you just have to experience. The same can be said of Glass ID and Show & Tell, hosted by Lynn Welker. No matter how many times you see Lynn do this you just cannot help but be impressed and entertained. Cambridge Glass and All That Jazz, a program put on by the Miami Valley Study Group was

fabulous as all their programs are, and it was good to see David Rankin there with the group. After the show closed, and the dinner was eaten, it was time for Convention Speaker, Howard Seufer. All those who attended know, as I do, he was great. What a FANTASTIC MEMORY. Really Howard, thank you, for all the fun and by the way, we all really learned a lot.

The National Museum of Cambridge Glass, thanks to Cindy Arent and her committee, afforded numerous FANTASTIC MEMORIES. The newly completed Edna McManus Shepard room, which is an educational gem was one. Three others were the black and gold decorated items in the dining room, the Arms display in the sample room, and the Decal Wear plus smoker items in the rotating display room, that's right, FANTASTIC MEMORIES.

As you can see there were a lot of FANTASTIC MEMORIES, but the ones that really matter, are the friendships, the camaraderie, the whole experience shared with others. This is what makes the NCC Convention the memorable event it is. Now I know it is a long way off but believe it or not I have already made my plans to be there next year. If at all possible, please join us so you can create your own FANTASTIC MEMORIES.

Ken Filippini

NEW BOARD MEMBERS FOR 2004

Shelley Cole, Mark Nye Join the Board Cindy Arent Re-elected

Just prior to the Annual Meeting, Vice-President Tarzan Deel, Jr. announced the results of the 2004 election of the Board of Directors. This year, almost 300 votes were cast; just a bit short of 2003's all-time record turnout.

There were seven candidates on the ballot, vying for three seats: Cindy Arent, Shelley Cole, Bill Dufft, Bob Gallagher, Freeman Moore, Mark Nye and Frank Wollenhaupt. Cindy Arent was the lone incumbent, George Stamper and Tarzan Deel having chosen not to seek re-election.

Cindy Arent, Shelley Cole and Mark Nye were elected to the Board. Because of a recent amendment to the By-Laws, a First Alternate was also named: Frank Wollenhaupt.

President Rick Jones thanked all the candidates, pointing out that this year's slate was an especially diverse and well-qualified group.

The newly elected Board met the following morning to select officers for 2004-2005. The president will be Ken Filippini of New Jersey. Ken has previously served as Secretary, and has held several key committee assignments, including Study Group Advisor.

Sharon Miller will be Vice-President. Dennis Snyder and Larry Everett will continue as Treasurer and Secretary, respectively. Past President Rick Jones was appointed Sergeant-At-Arms.



Shelley Cole, Mark Nye and Cindy Arent

Charlie Upton Resigns; Frank Wollenhaupt Added to the Board

Charles Upton, a founder and former President of the NCC, has submitted his resignation from the Board of Directors. Pursuant to last year's amendment to the By-laws, Charlie was automatically replaced by First Alternate, Frank Wollenhaupt, who will serve the remainder of Charlie's term.

Charles Upton was one of the founding members of the NCC, and has held many elected and appointed positions during its history. The length and breadth of his service to the NCC has been unmatched. In 2001, the Board of Directors awarded a Lifetime Membership to Charlie, in well-deserved recognition of his

years of leadership and service.

As Charlie's replacement on the Board of Directors, Frank Wollenhaupt will have large shoes to fill, but he is exceptionally well qualified to serve. Frank is one of only five NCC members to have attended every NCC Convention. Like Charlie Upton, Frank has given untold hours of service to the NCC for decades. He is an active member of the Miami Valley Study Group.

On behalf of the entire NCC, The Crystal Ball thanks Charlie Upton for his many, many years of service, and welcomes Frank Wollenhaupt to the Board of Directors.

The Crystal Ball

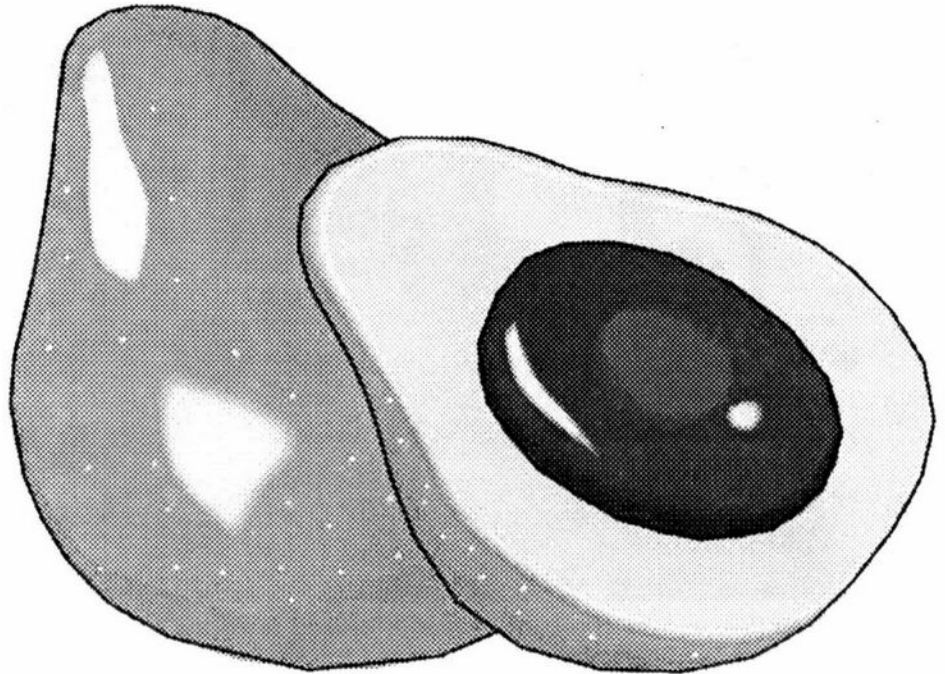
on behalf of the membership of the NCC, offers heartfelt gratitude to outgoing Board members Tarzan Deel and George Stamper for their exceptional service to the organization.

“The Avocado Code”

Collectors Call it Avocado, but What Was Its True Name?

by Les Hansen

Avocado seems like an ideal name for the color of opaque glass made by the Cambridge Glass Company that collectors seem to either love or hate. After all, it is almost a perfect match for the flesh of the Avocado fruit as well as the full-bodied green color, named Avocado, of kitchen appliances that was popular with homemakers in the early 1960s. However, the *Colors in Cambridge Glass* book points out, “The name ‘Avocado’ has been affixed to this color by collectors of Cambridge glass.” Furthermore, “No reference to the name [Avocado] has been found in any trade publication or company literature.”



Henry T. Hellmers’ *Batch Book of Glass Formulae* has allowed us to document the ingredients in many colors of Cambridge glass. The book also provides us some opportunity to check the names assigned to colors of glass. Hellmers’ batch book contains formulas for all of the Cambridge colors from the 1920s and 1930s, up to Hellmers’ departure from Cambridge in 1932. Hellmers was employed by the Cambridge Glass Company in 1930; however, clearly, he added the formulas for the earlier Cambridge colors to his batch book.

All of the Cambridge colors from 1920 to 1932 are labeled by name in Hellmers’ batch book with just a few exceptions. The exceptions for the transparent colors will be the topic of a future article. However, the formulas for the opaque colors of Azurite, Ebony, Helio, Jade, Ivory, and Crown Tuscan in Hellmers’ batch book are all labeled by the color

assigned by the Cambridge company and also used by collectors today. The exceptions are Primrose, Carrara, and “Avocado”. The formula for a white opaque, dated 1923 and attributed to Cambridge in Hellmers’ batch book, almost certainly is the formula for Carrara. Likewise, a formula for a yellow opal attributed to A. J. Bennett of Cambridge, almost certainly is the formula for Primrose.

That leaves “Avocado” as the only Cambridge opaque color lacking identification in Hellmers’ batch book. It is unlikely that the formula for Avocado would have been excluded from Hellmers’ batch book, because the color was likely introduced shortly before Hellmers arrival in Cambridge. How many Cambridge formulas appear for opaque green colors in Hellmers’ batch book? Only five – and three are alternative formulas for Jade with just slight differences. The other two formulas for green opaque

colors have names assigned to them – Pomona Green, dated 1928, and Pea Green, dated November 24, 1932.

The 1928 date for Pomona Green is an extremely good fit for “Avocado”, because the *Colors* book indicates, “The shapes found lead us to believe that it had limited production in the 1927-28 time period.” Hellmers claimed credit for developing a green opaque named Pea Green for Cambridge; however, the dates of his employment with Cambridge and the date of the formula seem too late for “Avocado”.

So, what can we conclude? Pomona Green was very likely the name used by the Cambridge Glass Company for the color that collectors today call “Avocado”. Harold and Judy Bennett, in their book published in 1970 – *The Cambridge Glass Book*, identified a 13” vase (blank #2374)

See the Crystal Ball photos in color, on-line at:
www.crystalballphotos.org
password: dogdays

continued on page 11

The Museum:

McCartney Family Visits Museum



W.C. (Bill) McCartney was chosen by Arthur J. Bennett to be the first Secretary/Sales Manager of The Cambridge Glass Company. Mr. McCartney remained in that position for over 50 years. One of his daughters, Bonnie Brady, and her three children toured the National Museum of Cambridge Glass on the Sunday after convention. The Brady family also lent the photo of Mr. McCartney beneath which they are standing in the photo above. Left to right: Kip Brady (grandson), Jill Brady (granddaughter), Kim Brady (granddaughter) and Bonnie Brady (daughter).

Sprucing Up the Education Center



Bill and Yvonne Dufft hang new window treatments, custom made for the museum's Education Center by Yvonne. The fabric, in Cambridge black and gold, was donated by Jane & Ken Filippini.

National Museum of Cambridge Glass

Wednesday - Saturday

9:00 to 4:00

Sunday Noon - 4:00

Cambridge Workers Reunion

In what has become a beloved tradition, the Cambridge Cordials Study Group sponsored the annual reunion of former Cambridge factory workers. The reunion was held at the museum on the Sunday afternoon following convention, and was attended by over a dozen former workers.

We had a little computer trouble here before deadline, and we didn't get their photos in time, so look for more on the Workers' Reunion in next month's Crystal Ball.

Along with friendship and fond memories, all in attendance got to indulge in Jill Ross' famous cookies.

HELP WANTED

With major museum projects in good order, the Board is again turning toward our future and thinking about the most sensible plan for the Endowment Fund. We have one generous member with university development experience already pitching in. We would like to know if there are other members with related experience who would be willing to help; notably in the areas of legal affairs and estate planning.

We are not sure what the ultimate roles would be, but wanted to survey our membership's expertises and find out what resources might be at our disposal.

If you think you can help, please call President Ken Filippini at (201) 670-0990. Thank you!

Jeff Ross Receives Phyllis Smith Award

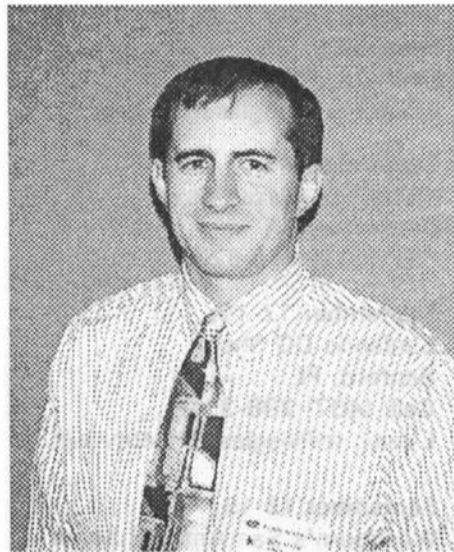
Long-time Membership Chair Named Second Recipient of Service Honor

by Sharon Miller

Jeff Ross was the recipient of the second Phyllis D. Smith Award, given annually by the NCC Board of Directors. Jeff joined the NCC in October 1990 and still has his original welcome letter signed by Phyllis. Jeff was Membership Chairman for the past ten years and has just completed the process of handing over the job to a new chair. Jeff has now taken on a new job of inputting data for museum inventory control purposes.

Jeff and his wife, Jill are both active members of the Cambridge Cordials Study Group. They like to collect barware and Ebony pieces to go with their Lenox china. They are now beginning to collect King Edward stemware. Jeff was a long time collector of Blue Caprice and still has some favorite pieces in his collection.

Jeff received his Bachelor's degree from The Ohio State University, Max C. Fisher College of Business in 1987. He has worked at Southeastern Equipment Company of Cambridge, Ohio in various financial/



Jeff Ross

accounting positions and is now the credit manager for the network of Southeastern Equipment dealerships in Ohio, Indiana and Kentucky. Jeff and Jill have two sons, Randall, 4 and Patrick almost 2. Jill has recently completed her teaching degree and is hoping to find a full time teaching position this coming fall. Jeff is honored to have received this special award in memory of Phyllis's years of service to NCC.

The Rainbow's Hue and Goblets for You

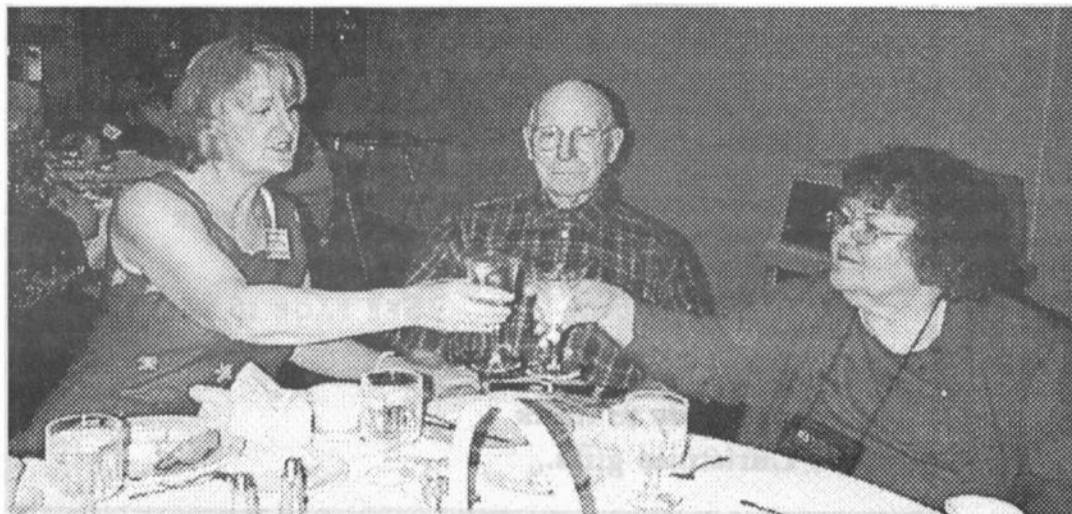
by Georgia G. Otten

There we all were.....Somewhere Over the Rainbow.....the pot of gold, that item of legend, would have to be those treasures purchased during our recent NCC convention show and sale!

Friday night was a time to enjoy the banquet and discuss the day, and that of course would include mention of one's latest finds! Excitement was at every table. Something else could be found at those tables, special goblets brought in for the evening's beverage of choice!

Some members may not know of the custom started many years ago. Several collectors attending the banquet brought in their personal choice of an elegant Cambridge stem from which to enjoy their favorite beverage! It has become an annual practice. I did hear that some people bought a goblet Friday at the show. Some because they did not know about the custom before arriving or they forgot to bring their goblet from home (rumored to be a 3011 Banquet goblet and a Tally Ho goblet in Carmen) or simply because they wanted a new treasure! There were many stems from which to choose at the show.

continued on page 15



At left: Georgia Otten and Judy Rhoads toast with their special Cambridge Goblets at the banquet, with Mac Otten looking on and wishing the glasses were Heisey.

Events:

If you know about any upcoming glass shows or other glass events, please pass the word on to us at least six to eight weeks before the show dates. These listings are free of charge.

Mark Your Calendar



> **Quarterly Meeting**
Saturday, August 21
Noon Luncheon at Theo's
632 Wheeling Avenue

> **Quarterly Meeting**
Saturday, November 6
Dinner &
Educational Program

The NCC Tape Measure



ONLY
\$5

"Don't measure a vase without it"

See page 16 to order

8

Upcoming Glass Shows, Etc.

August 7-8:

The Great Northeast Show
White Plains, NY
Call: (330) 270-3348
www.glassshow.com

August 21-22:

Houston Glass Club Show
Rosenberg, TX
Call: (281) 342-4876
www.houstonglassclub.org

September 4-5:

Metroplex Glass Show
Grapevine, TX
Call: (817) 875-6292

September 17-19:

Sanlando DG Show
Sanford, FL
Call: (407) 298-3355
E-mail: milliesglass@webtv.net

September 18-19:

Washburn's San Antonio Show
Live Oak, TX
Call: (210) 599-0635
E-mail: WashburnK@aol.com

September 18-19:

Rochester DG Club Show
Rochester, NY

October 1-2:

Heart of America DG Show
Independence, MO
Call: (913) 681-8751
E-mail: hoagc@juno.com

October 16-17:

Age of Elegance Show
Waxahachie, TX
Call: (817) 545-5856
E-mail: rrider@gte.net

October 23-24:

NE Florida DG Club Show
Jacksonville, FL
Call: (904) 268-5550
E-mail: kwpewp@aol.com

November 5-6:

North Jersey DG Show
Allendale, NJ
Call: (973) 423-1324
E-mail: cdrizzo@aol.com

November 6-7:

Michigan DG Society Show
Dearborn, MI
www.mdgs.freepagez.com

November 6-7:

Hudson Valley DG Show
Millbrook, NY
Call: (845) 473-3898



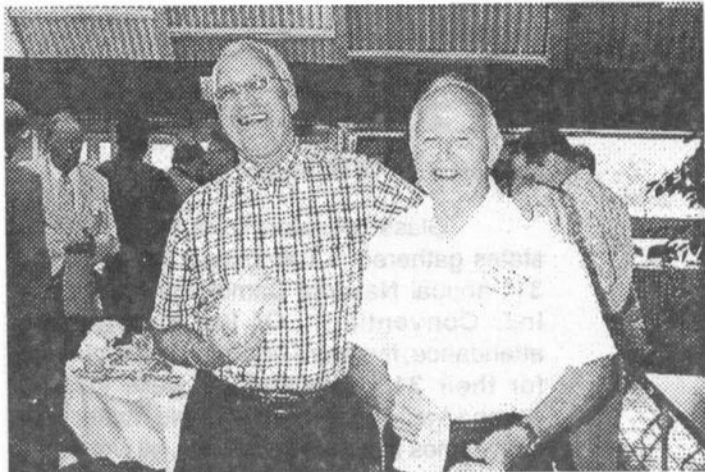
COBALT BLUE SCOTTY DOGS

\$100/PAIR

SEE PAGE 16 TO ORDER

It's not too early to think
about Christmas gifts...

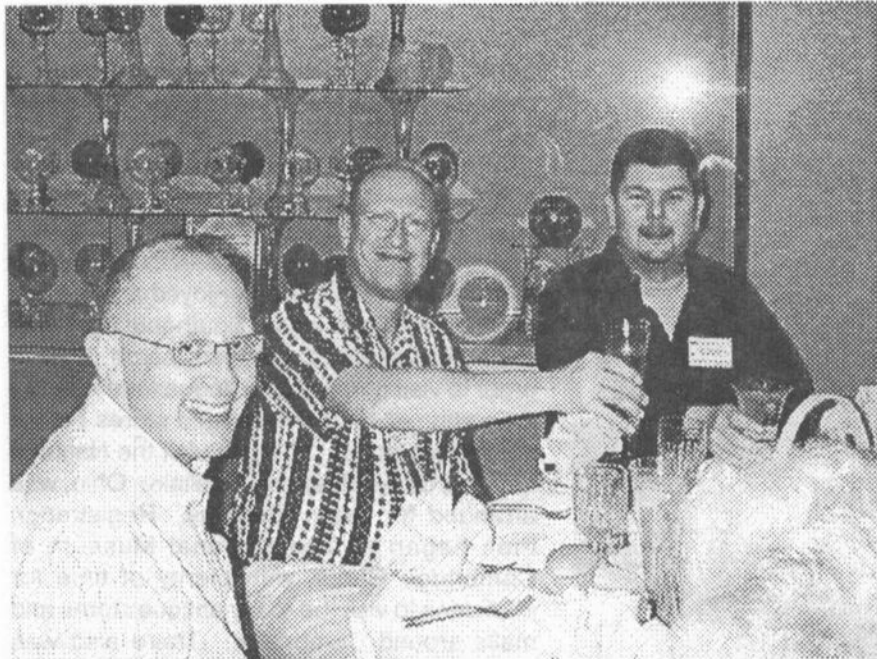
People & Places: Convention 2004



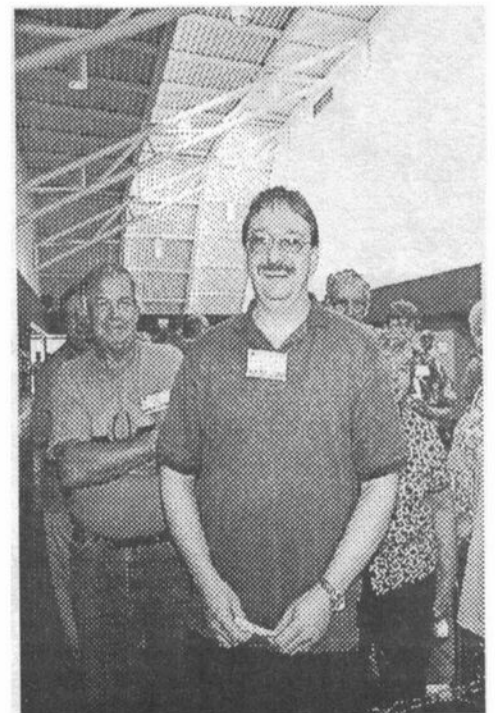
Joe Andreczek and Carl Beynon sell "fifty-fifty" raffle tickets on behalf of the Cambridge Cordials. Willard Kolb won the raffle, and generously donated his 50% back to the NCC.



Convention Chair (and new NCC Board Member) Shelley Cole visits with her former Convention Co-chair Georgia Otten.



Les Hansen, Don Smith and Doug Ingraham enjoying the Annual Banquet (held on Friday night this year).



First in line for the Glass Show this year was Brent Berry; a first-time Convention attendee from Michigan. Get any treasures, Brent?

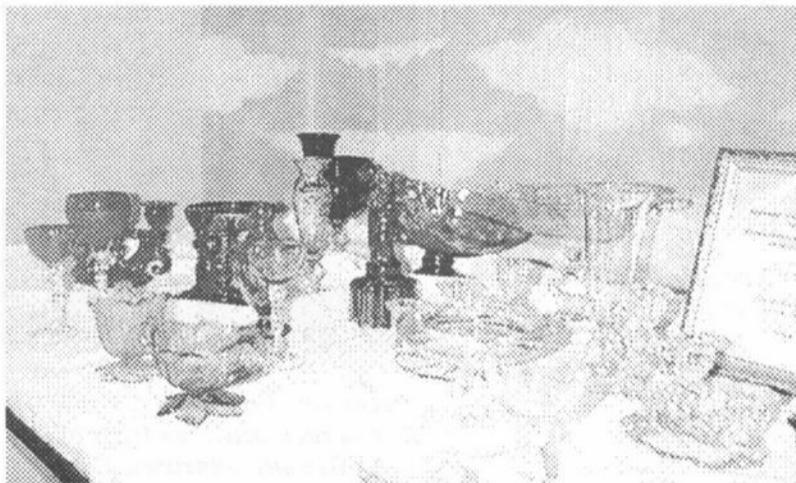
People & Places: Convention 2004



A window display of Cambridge Cuttings, provided by Linda Adkins and Tarzan Deel.



A few of the fabulous Ivy Balls on display by Ken & Judy Rhoads



Part of the "Rainbow of Color" displayed by Shelley Cole & Alex Citron

Many Collectors Return to Cambridge for 2004 Convention

by Lorraine Weinman

Glass collectors from more than 20 states gathered in Cambridge, Ohio, for the 31st annual National Cambridge Collectors, Inc. Convention. Of the hundreds in attendance, five were returning to Cambridge for their 31st time and 18 were visiting Cambridge for their first time. No matter how many times they had been here, all were able to participate in numerous planned activities and appreciate an outstanding convention and show and sale.

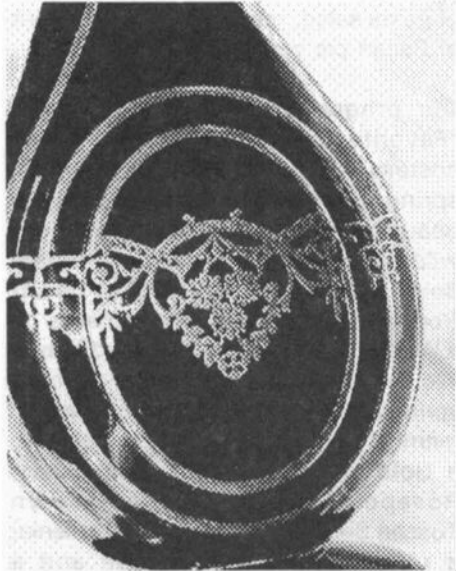
This was the 29th annual show and sale. This year's quality dealers were joined by seven new dealers who added to the abundance of elegant glass from the Cambridge Glass Co. and many other well-known glass manufacturers. Show directors, Mary Beth Hackett and Joy McFadden had another great show. The dealers were pleased with the show, but not nearly as much as the many collectors who left the show with prized treasures they had found and purchased.

A number of enthusiastic members met on Wednesday and enjoyed a pool-side picnic at the Days Inn on Southgate Parkway. Each year anxious members come early in order to visit and become acquainted with the area and get to all the antique stores before the crowds arrive. A trip to visit the National Imperial Glass Museum in Bellaire, Ohio, was arranged for early Thursday. Registration then began at The National Museum of Cambridge Glass, with plenty of time for attendees to visit the many antique stores and malls around Cambridge. There also was time to watch a new video about the Cambridge factory, which was available to view at the Museum. Later in the day there was a program at Theo's Restaurant about the vast variety of Cambridge candelabras which was presented by David Ray. A dinner followed this great presentation.

eBay Report:

Nudes:

- A #3011 Cocktail in Tahoe Blue with frosted stem and crystal foot sold on June 16 for \$293.
- A #3011 Bud Vase in Amber sold on June 22 for \$314.
- A #3011 Ivy Ball in Crystal, with frosted stem and crystal foot sold on June 23 for \$203.
- A #3011 Brandy in Royal Blue with Frosted Stem and Crystal Foot, sold for \$418.
- A #3011 Brandy in Pistachio (hard-to-find) did not sell. The reserve was not met by the high bid of \$126.
- A #3011 Short Cigarette box, in Crown Tuscan, GE Diane, sold on July 11 for \$1,425.



Flower Frogs:

- An 11" Bashful Charlotte in frosted Light Emerald sold on July 15 for \$375.

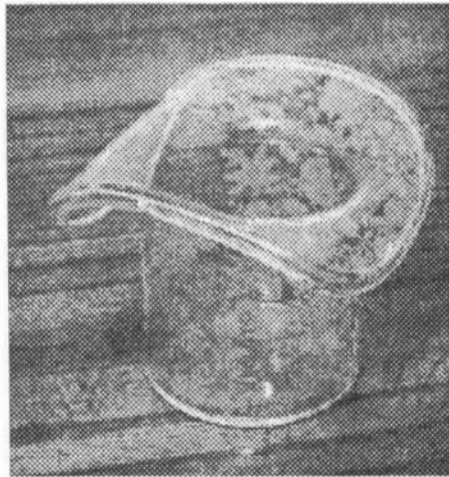
Caprice:

- A pair of Moonlight 2-light Candlesticks plus a footed bowl sold on July 20 for \$201.



Etches:

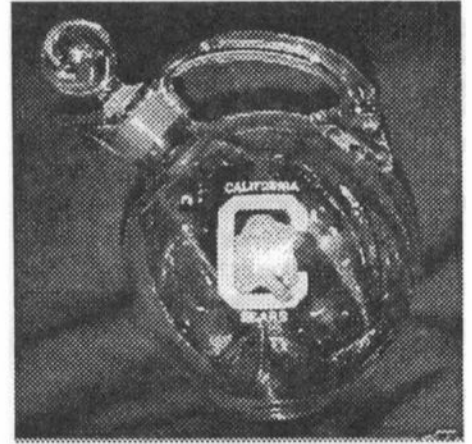
- A 4.5" Hat, etched Wildflower, sold on June 16 for \$355.



- An 80 oz Ball Jug in Ebony, silver-encrusted Lorna, sold on July 18 for \$573.
- A 12" Covered Urn, etched Rosepoint sold on 7/12 for \$1,005.
- A gorgeous Ebony Nautilus Vase with silver overlay (at left) sold on July 8 for \$481.

Miscellaneous:

- A #3400 Decanter (don't know if this is 8 oz or 32 oz) with an enameled California Bears Logo, sold on June 24 for \$1,000.



- The extremely rare Mannequin Head in Amber did not sell. The reserve was not met with a high bid of \$2,550.
- Also not meeting its reserve was a Swayback Scotty Canape Set; the high bid was \$292.

Avocado

continued from page 5

in the "Avocado" color as Pomona Green. Harold and Judy probably interviewed factory workers to assign Pomona Green to this color and, more than likely, they got the factory name correct for this color.

The formula for Pomona Green in Hellmers' batch book is extremely similar to the formulas for Azurite, Helio, Jade, and Ivory, except for colorants. The formula seems correct for the color, the date is appropriate for the color, and supporting sources suggest that the factory name for "Avocado" was Pomona Green.

What about Pea Green? Webster's dictionary states that pea green is a "yellowish green". Hellmers contended that Pea Green (dated 1932) was a production color while

he was employed by Cambridge. Therefore, the "experimental" light opaque green items produce by Cambridge, especially in the 3400 line – see plate 50 in the *Colors* book, might have had the color name of Pea Green. [The color of these experimental items is unappealing to most people, and the color name of Pea Green is also less than appealing; therefore, it is little wonder why glass in this color was not produced in any quantity.]

The probable use of Pomona Green by Cambridge for the color "Avocado" brings forth the issue of the "Pomona" treatment reportedly applied to crystal blanks by the Cambridge Glass Company in the late 1910s – the topic of another future article.

Study Groups:

The NCC has several study groups; these are the groups currently active and holding regular meetings. Listed below is contact information for these study groups.

If there is no study group in your area and you are interested in starting or joining a new study group, please contact NCC Study Group Advisor Judy Rhoads at kjrhoads@aol.com.

- #13 - Miami Valley Study Club**
Miami Valley area, Ohio
Larry Everett
db0098@dragonbbs.com
(937) 675-6491

- #14 - The Cambridge Cordials**
Cambridge, Ohio
Lorraine Weinman
blweinman@hotmail.com
(330) 966-9376

- #15 - North Texas Cambridge Study Group**
Dallas area, Texas
Scott Pierce
scottpierce1@msn.com
(817) 427-9510

- #16 - Elegant Glass Collectors**
PA & NJ
Bill Dufft
billnvon@aol.com

- #17 - The Columbus Wildflowers**
Columbus, Ohio
Barbara Wyrick
bwyr@ee.net
(614) 291-0361

- #18 - The Cambridge Triangles**
VA, MD, DC
Alex Citron
NCCcrystalball@aol.com
(434) 296-2531

- #19 - NE Ohio Cambridge Collectors**
Akron-Canton area, OH
no contact right now

- #20 - South Florida Study Group**
Miami, FL
Linda Gilbert
rosepointbabe@aol.com

Study Group #16 Elegant Glass Collectors

President Jane Filippini called to order the Elegant Glass Study Group meeting at 3:30P.M. on May 8th at the home of Ken & Jane Filippini. The first order of business was the Treasurer's Report. Bill Dufft reported that due to successful sales of the Cats Meow project, the treasury now stands at \$875.71. Under old business, discussion was held on the future of the Cats Meow project, and disposition of funds in the Study Group treasury. Paul DuChamp made a motion that the remainder of the Cats Meow inventory and future production rights be donated to the NCC Museum. Charlie Rizzo seconded the motion and the motion carried.

Ken Filippini made a motion that \$100 be donated to the Century Club in the Study Group's name. Walter Lee seconded the motion. The motion carried.

At this time the Study Group annual dues of \$5.00 per person were collected.

New Business: It was decided that the remainder of the funds in the treasury could be used to launch a new project. The Silent Auction at this year's Convention is being chaired by Bill Dufft and the Study Group will use it's manpower to assist Bill. Plans were made to have a dinner in Cambridge during the Convention as many members of the Study Group plan to be at this years event.

Two new members to join the group were Bob & Karen Arnold, who will be doing the Cambridge Glass Show this year. Special guests were Carl & Helen Sparacio. Carl was one of the founding members of the Heisey Glass Club and served 8 years on the Heisey Board.

Some of the items at Show & Tell were: Beverage Urn etch #695 in Topaz, 103 10oz. Pilsner glass in cobalt, 276 vase 10" chrysanthemum in Willow Blue, 276 vase 10" "Betty" in pink, Windsor Blue Flying Lady bowl.

The program consisted of a tour of Ken & Jane Filippini's collection. It was fun looking, handling, and discussing a large variety of Cambridge items. Jane was an excellent hostess, serving an array of appetizers and desserts.

Respectfully submitted,
Ken Filippini

Study Group #17 The Columbus Wildflowers

On Thursday, May 6, 2004, the Wildflowers met at the home of Linda Speakman at 7:00 pm. Refreshments of pasta salad, relish tray, and Coconut or Pecan pie were served.

Our program this time was called "Favorite Spring Etchings" and our hostess, Linda, had put her favorite spring etching to use. She had a beautiful table arrangement of cut wildflowers in a "Wildflower" footed Bowl with a Crystal Two Kid flower frog, and she served refreshments on a Wildflower Platter and divided Mayo. We then discussed the other favorite spring etchings and decorations which members had brought. They included: a Gold Encrusted Wildflower Vase; Rosepoint Water Goblet; Crown Tuscan Swan with Charleton Gardenia; a tall Talisman Rose Vase and a Talisman Rose #7966 stem with just the rose etching and no gold; a Marjorie (Fushia) Comport; a Gold Encrusted Wildflower flared edge Gadroon Bowl; a #7966 Gold Encrusted Wheat stem (which sparked a discussion of the differences in actual stems relating to the time era in which they were produced. The Wheat etch was only produced in 1949 and was on the very deco shaped 7966 stem); a Lily of the Valley Cordial; a Radiant Rose Brandy; a Blossomtime Wine; an Apple Blossom Water Goblet; a Nearcut Daisy Basket; and a Crown Tuscan three part Covered Candy with Charleton Blue Mist decoration.

We were surprised at the number of items which could be included in the category of "Spring Etchings."

Study Groups:

Since there was no new business, we had Show and Tell which included: a Crystal decagon Comport with unusual floral cutting; a Tuxedo Goblet and 2.5 ounce Wine, both with Carmen feet; a Crystal Gadroon Sugar Basket with hammered aluminum handle; a Mount Vernon individual salt; a Keyhole center handled Tray etched Candlelight; a Carmen Keyhole Candlestick; a round Carmen Martha Washington three part Covered Candy; a Forest Green #1284 vase with crystal foot and floral cutting; and a Light Emerald stem with unusual silver overlay Camel, Palm tree and Pyramid design.

The Wildflowers do not meet over the summer. Those of us who can, will try to meet up at convention, and then we will resume our monthly meetings in September with our annual picnic at the home of Bill and Joann Lyle.

Our meeting adjourned at 10:00 PM.

New members in the Columbus, Ohio area are always welcome and can contact either Linda Roberts at lrobert2@columbus.rr.com or Barbara Wyrick at bwyr@ee.net

—respectfully submitted by Barbara Wyrick, Secretary

Study Group #15 North Texas Study Group

Gerri Cook provided the house and snacks for the meeting of April 15, 2004. We welcomed our guest – a member from the North Texas Fostoria Society. We started with some business items. Scott Pierce had a copy of the current study group membership, and verified the correctness of contact information. Freeman reported he will be running for the NCC Board so everyone should return their ballots which will appear in the May Crystal Ball. It's too late now to prepare a display or presentation for the NCC convention, but the idea has been planted for our discussion this fall.

Our topic for this meeting was "Trick and Treat". A "Treat" would be something that you got a great bargain on while a "Trick" would be something that didn't quite turn out as expected. It seemed that everyone had an example of each. Some of the items included an everglades bowl that was a bargain, and an "almost" everglade bowl. Our guest had a handled Fostoria punch cup, which was her treat.

Most of the Show-and-Tell items also qualified as "Treats". They included a Mandarin Gold cascade covered candy dish, #119 amber tall handled basket, 3750 water stem with ivy cutting, 1263 amber French Dressing bottle etched "Oil - Vinegar, and a Heisey Goose 3 oz wine 5058 stem.

Submitted by Freeman Moore

Study Groups Meet at Convention

Judy Rhoads led the annual Joint Study Group Meeting at the 2004 Convention. Members attended from five of the eight study groups: Miami Valley, Cordials, Elegant Glass Collectors, North Texas and Triangles.

The meeting focused on the development of a kit to be made available to anyone who wants to start a Study Group.

The Miami Valley Study Group has some resources for potential new Study Groups on their website (www.mvsg.org). Also, several of their programs are available on DVD.

The NE Ohio Study Group needs help with organization. They are currently inactive. To get involved, e-mail Judy Rhoads at KJRHOADS@aol.com.

WASHBURN'S SAN ANTONIO SHOW AMERICAN CHINA, GLASS AND POTTERY

SEP 18, 2004 9:00 - 5:00

SEP 19, 2004 10:00 - 4:00

Admission: Sat \$6 (good both days) Sun \$5
(*\$1.00 off with this ad*)

**Live Oak Civic Center • 8101 Pat Booker Road
Live Oak (San Antonio), TX 78233**

GUEST AUTHORS: Gene & Cathy Florence

"Collector's Encyclopedia of Depression Glass," "Elegant Glassware of the Depression Era," and "Very Rare Glassware" series...plus many other titles

SPECIAL GUEST: Freeman Moore, Rosepoint Collector

For information:

Kent Washburn 5492 Walzem Road #292 San Antonio, TX 78218
(210) 599-0635 • WashburnK@aol.com

NEXT SHOW: FEB 12 & 13, 2005

The 2004 Convention

from page 10

On Friday, registration opened again at the Civic Center shortly before the First-Timers Orientation Session. Judy Rhoads led the session which introduces first-timers to Convention procedure and to mentors to help acquaint new people. This event was followed by a joint study group meeting. Numerous Cambridge glass study groups from across the country met to share their ideas and suggestions and to help people interested in starting study groups in their part of the country.

The Glass Show and Sale opened its doors at 2:00 p.m. to a rushing crowd waiting for the opportunity to be first to find special, unique and wonderful pieces of glass that the dealers had brought. Many purchases were made within minutes of the doors being opened. But there were still great buys to be found by those arriving later. New to this year's show and sale was a special area for "Silent Auction Bidding." Thirty-four special pieces of glass had been donated by members for this auction. The auction committee was: Bill Dufft, Shelley Cole, Ken Filippini, Cindy Jones, and Doug Ingraham.

Friday evening there was a social gathering for attendees giving them time to visit and share stories and meet new collectors. Frank and Vicki Wollenhaupt, Joy McFadden, and Marcia and Bob Ellis were recognized for their attendance at all 31 NCC conventions. Fleur de Lys Healy, of Florida, challenged the members to donate in a matching funds event in order to generate money to pay for the new roof at the Museum. This was a very successful effort. Thank you! The annual NCC, Inc. meeting followed. Board election results were announced. Cindy Arent was reelected; and Mark Nye and Shelley Cole were newly elected.

Jeff Ross, of Cambridge, received the Phyllis Smith Outstanding Achievement Award for the many hours of hard work and services that he has given to the club.

Cindy Arent presented president Rick Jones with a special personalized paperweight from the Board of Directors in appreciation of his nine years of service to the Board as president. Rick is stepping down from that position.

Early Saturday morning, dedicated collectors found their way to the glass flea market, the Glass Dash, at Beech Grove Family Development Center. Many fine glass purchases were made before breakfast from the dealers set up there. Show chairs Larry and Susan Everett had a very successful show.

Saturday afternoon, Lynn Welker, a local author and glass authority, conducted the popular "Glass Identification and Bring & Brag" session. Observers were in awe of the rare, unique, and outstanding pieces that collectors brought to impress and share with fellow interested collectors. Later, a special program was presented by the Miami Valley Study Group from Dayton. This was a wonderful program titled "Cambridge Glass & All That Jazz" and described the glass through the years. This program was recorded and is being sold with the proceeds going to the NCC Endowment Fund. This is a program well worth seeing.

Following the banquet Saturday evening, Howard Seufer, of West Virginia, was the convention speaker. With his 29 years' experience at the Fenton Art Glass Company as an engineer and quality control manager, he was able to entertain and educate his listeners. His presentation was lively and required active involvement of the audience. It was a fun time for all. Mr. Seufer also praised our local National Museum of Cambridge Glass as being very alive.



Convention Speaker Howard Seufer

If you have not visited the Museum recently, you should go in soon. There have been a lot of new additions and changes and there are many must-see features that will be changing at the end of the season.

Again this year the Show and Sale and the Glass Dash were very successful. The annual Cambridge Glass Company workers' reunion Sunday afternoon saw 23 former workers in attendance. This chance to visit and reminisce was added to by the opportunity for the former workers to visit the museum and see many of the pieces of glass that they once helped make.

Thanks to Shelley Cole for her hard work and contributions as convention chair, and to the many who did displays, made presentations, volunteered many hours, and thanks to everyone for helping to make this a memorable convention. The time and effort put into supporting NCC and making it a special organization in which we all can be proud is really paying off! One needs only look at our Museum, convention and many fine programs and committed members to see those rewards.

Make plans starting now to be at Convention next year! It is definitely worth the time! You will benefit from the experience.

Goblets

from page 7

Color was present in the goblet choices, as were cuttings and etchings. There were even orchids seen floating in several of the glasses! There were some toasts made and glasses clinked.....carefully of course! The best toast for the evening was that made to the First-Timers! And we toast you again for good measure and hope you will come back next year! And bring your goblet!

Here we go now, flying quickly over the rainbow, you know, along with those bluebirds!

Here are the results of the goblet check:

- 3085 Peach-blo Footed Tumbler, etched Hunt Scene
- 3110 Goblet w/ crystal bowl, peach-blo stem
- 3111 Goblet, etched Candlelight
- 3112 Goblet, royal blue bowl
- 3116 (2) Goblets, cut Candlelight
- 3121 Goblet, etched Portia
- 3122 (2) Goblets, etched Diane
- 3132 Goblet, unidentified cutting
- 3500 Goblet, unidentified cutting
- 3600 Goblet, etched Chantilly
- 3625 Iced Tea, etched Chantilly
- 3750 Goblet, Harvest cutting
- 3750 Goblet, Euclid cutting
- 3775 Goblet, Roxbury cutting
- 5000 (2) Heirloom Goblets, mandarin gold
- 7606 Goblet, etched Marjorie
- 7817 (2) Pilsners, royal blue foot
- 7966 (3) Goblets, Rondo cutting
- 7966 Goblet, all amethyst
- 7966 Goblet, decorated with Talisman Rose
- 7976 (2) Low Goblets
- 1401/100 Tally-Ho Goblet, etched Elaine
- 1401/100 Tally-Ho Goblet, frosted Royal Blue with cutting
- 1402/100 (4) Tally-Ho Goblets, royal blue bowl, D1007/8
- (2) Pressed Rosepoint Goblets, one carmen, one royal blue
- 3125 (2) Goblets, etched Deauville
- (2) Arcadia Goblets
- Huntington Tumbler Company goblet, crystal foot, green bowl

Cambridge Glass Displayed in Libraries



Beverley Hanson, an NCC member from Oceanside, California, stands before her display of Caprice in the Oceanside Library, presented as part of the celebration of the library's centennial.

Outreach Thru Library Projects

by Myrle Scott

You might ask, what is a library project? This project is a way to spread information about Cambridge glass, to educate people about the glass making history of our country through Cambridge glass and generally to show the beauty of the glass you collect.

You go about doing this by having displays in your area libraries along with literature and contact persons. Exhibits can be done to tie in with local glass shows or antique auctions. Glass displays may spark an interest in those who may have a collection or even a few pieces and would like to learn more about their items. It is also a good way to recruit

new members to the NCC and your local study groups.

My depression glass club has been doing these exhibits for the past three years and we have found that the libraries love to have our exhibits. And we have increased our membership as well.

If you would like to learn more about this project, contact me. I have packets made up to help you get started on your own library project ... like Beverly Hanson above.

Call Myrle Scott at 973-292-3028 or e-mail mksteech@aol.com.

The Marketplace:

VIDEOS

"The Crystal Lady" \$15.00

A video copy of an original Cambridge Glass Co. promotional film showing the making of a goblet in the Cambridge factory. 25 minutes, B&W.

NEW: Grand Opening Video \$15.00

A high-quality video record of the Grand Opening of The National Museum of Cambridge Glass. 25 minutes, Color.

SALT & PEPPER TOPS

Salt & Pepper Tops \$6.00 per pair
Polycarbon plastic, will fit most Cambridge shakers such as Rosepoint footed and flat-bottom shakers. Also fit Heisey Rose, Saturn, Plantation, Crystolite and some Orchid. Will fit some Anchor Hocking and Candlewick.

Order 10 or more pairs, pay only \$5 per pair

Books by Gene Florence

Very Rare Glassware (3rd Series)	\$24.95
Very Rare Glassware (5th Series)	\$24.95
Very Rare Glassware (6th Series)	\$24.95
Elegant Glassware (8th edition)	\$19.95
Glassware of the 40s-50s-60s (4th edition)	\$19.95
Glassware of the 40s-50s-60s (5th edition)	\$19.95
Stemware (Cordials) 1920s-1960s	\$24.95

CONVENTION FAVORS

1995 Cranberry Ice Cascade Goblet	\$5.00
1998 Yellow Irridized Cascade Goblet	\$5.00
2000 Carnival Mt. Vernon Juice	\$5.00
2001 Carnival Mt. Vernon Juice	\$5.00
2003 Bluebell Square Sugar/Cigarette	\$5.00

SCOTTY DOGS

**Red or
Cobalt Blue
\$100/pair**

**NCC Tote Bags
\$10.00**

Ordering Information

NCC Members get a 10% discount on all books so listed on page 17. There are no discounts on any other items.

SHIPPING & HANDLING RATES:

First item	\$3.00
Each additional item	\$1.00

SPECIAL SHIPPING:

- Scottie Dogs: \$10/pair for shipping
- Salt/Pepper Tops: \$3 shipping for any size order
- Jadite Tumblers: \$3 each, \$10 for a set of six
- Logo Pins: shipping included in price

OHIO RESIDENTS:
PLEASE ADD 7.5% SALES TAX

Payments by check or money order only.

Send orders to:

NATIONAL CAMBRIDGE COLLECTORS, INC.
PO BOX 416
CAMBRIDGE, OH 43725

*Be sure to include your complete shipping address and phone number.
Thanks!*

NCC LOGO PINS

Show your pride in being a Cambridge collector and a member of NCC.

Only \$5.00
includes
shipping



Crystal Ball

Table of Contents for The Crystal Ball

Issues #69 - #320
(Jan 1979 - Dec 1999)

Only \$2.00

Back Issues of The Crystal Ball

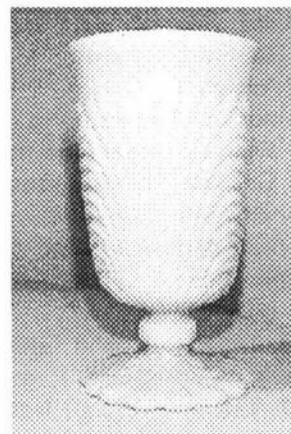
Sold by the year:

1999 • 2000 • 2001

2002 • 2003

\$5.00 per year

Jadite Tumblers



\$20 each; set of 6 for \$100

plus shipping charges of
\$3 each or \$10 for the set of 6

Made for the NCC by Mosser Glass
Marked on the bottom: NCC 2002

The Marketplace:

Books for Sale

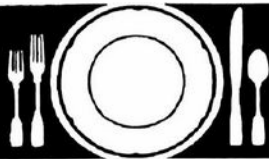
FOR ORDERING INFORMATION, SEE FACING PAGE

NCC Members receive a 10% discount on the following books:

1910 Near Cut	108-page reprint of the 1910 Catalog Paperback with price guide	\$14.95
1930-34 Catalog	250-page reprint of 1930 thru 1934 Catalogs Paperback with price guide	\$14.95
1930-34 Index	for above	\$2.00
1949-53 Catalog	300-page reprint of 1949 thru 1953 Catalogs Paperback with price guide	\$14.95
1956-58 Catalog	160-page reprint of 1956 thru 1958 Catalogs Paperback (no price guide)	\$12.95
Caprice	200 pages; lists colors, decorations, reproductions, etc. Paperback with value guide	\$19.95
Caprice Value Guide	2003 Values (when purchased separately)	\$5.00
Colors in Cambridge Glass	128 pages including 60 color plates; fully indexed Hard-cover with price guide	\$19.95
Decorates	136-page Paperback (no price guide)	\$14.95
Etchings, Non-Catalogued	70-page Paperback (no price guide)	\$12.95
Etching: Blossom Time	26-page Paperback (no price guide)	\$7.95
Etching: Candlelight	30-page Paperback (no price guide)	\$7.95
Etching: Chantilly	44-page Paperback (no price guide)	\$7.95
Etching: Diane	53-page Paperback (no price guide)	\$7.95
Etching: Elaine	64-page Paperback (no price guide)	\$9.95
Etching: Portia	57-page Paperback (no price guide)	\$7.95
Etching: Wildflower	42-page Paperback (no price guide)	\$7.95
NEW! Rock Crystal Engravings	Paperback (no price guide)	\$17.95
NEW! Rock Crystal Engravings: The Listings		\$9.95
Rosepoint	by Mark Nye; a comprehensive guide to Rosepoint Showing all blanks plus history of the line. 94 pages; Paperback with value guide	\$14.95
Rosepoint Value Guide	Values as of 2000 (when purchased separately)	\$5.00

The following books do not offer any discounts:

NEW! The Glass Candlestick Book	by Tom Felt and Elaine & Rich Stoer Volume I: Candlesticks from Akro Agate thru Fenton Hardback, 254 pages, full color.	\$24.95
Charleton Decorations	by Michael & Lori Palmer; a comprehensive guide to Charleton; full-color. Hard-cover (no price guide)	\$29.95
1903 Catalog	106-page reprint by Harold & Judy Bennett Paperback (no price guide)	\$5.00
1927-29 Catalog	66-page reprint by Bill & Phyllis Smith Paperback with price guide	\$9.95
1940 Catalog	250-page reprint of the largest Cambridge Catalog (loose 3-hole punched pages) No price guide	\$25.00
1940 Catalog Binder	for above; with Cambridge logo on front	\$5.00
Reflections	by the Degenhart Paperweight & Glass Museum A history of Guernsey County glass production; 45-page Paperback	\$5.00
Stemware	by Mark Nye; shows all Cambridge stemware lines 167 page Paperback (no price guide)	\$19.95
Universal Dinnerware	by Timothy J. Smith. Includes Cambridge Art Pottery, Guernsey earthenware, Oxford Pottery and more. 176 pages, color, Paperback	\$29.95
Welker - Volume I	by Lynn & Mary Welker; reprints from several Cambridge Catalogs. 120 pages, Paperback (no price guide)	\$10.00
Welker - Volume II	by Lynn & Mary Welker; 15 color plates showing choice Pieces from their vast collection	\$5.95



Stems Without Thorns

As the world's largest supplier of old & new china, crystal, silver and collectibles, Replacements, Ltd. has more than 700 different patterns of Cambridge crystal.

And however much we enjoy selling pieces that were once thought irreplaceable, we love buying them as well. Thanks to people like you, our crystal inventory currently numbers in the hundreds of thousands, and the numbers keep growing every year.

So, if you've been unsuccessfully searching for that elusive piece of Cambridge — or any other type of fine crystal — call us for a free list of pieces available in your pattern. And, if you're looking to sell pieces you currently have, we can help you there, too.

REPLACEMENTS, LTD.

China, Crystal & Silver • Old & New

1-800-REPLACE
(1-800-737-5223)

1089 Knox Road,
PO Box 26029, Dept. CB,
Greensboro, NC 27420
www.replacements.com

The Century Club • 2004

Recently, through the support of The Century Club - along with a generous matching grant from member Fleur deLis Healey of Florida - we were able to completely pay for the new roof for our museum. This was a significant victory!

Other essential projects remain, including a much-needed upgrade to our computer systems. In addition, we are all committed to the growth of the NCC's endowment.

The Century Club continues to need your support. Next month's issue will include a handy Century Club donation form, but if you just can't wait, mail your check for \$100 today. Thanks!

For Sale:

Caprice, Moonlight Blue:

- 184 style Tumblers (8 available) \$60 each
- 11" handled footed console bowl \$130
- Doulton Style Pitcher \$5,000

Candlewick Mallard Duck Punchbowl Set \$500
call Patty Elwood (419) 759-3841

(2) #3121 10 oz Tumblers, Rosepoint etch \$35 each. #3400/65 5-part Relish (no etch) \$25.
(a little extra for FedEx)
(937) 390-3617

Wanted:

WANTED.. to complete a collection of the #1541 square decanters with the Sombrero stopper; need the etched *BRANDY*.
Emil Kleemann (203) 484-4108 or ejkleemann@cs.com

FIND GLASS HERE... a "Wants" ad like this costs less than \$3, and reaches over 1,000 Cambridge collectors. You may locate that one elusive piece, or fill out a set!

DEALER DIRECTORY

THE GLASS URN

456 West Main Street, suite G
Mesa, AZ 85201 480-833-2702
480-838-5936

Mail Order Shows Open Shop

CAMBRIDGE, FOSTORIA, HEISEY, etc.

THE DEGENHART PAPERWEIGHT AND GLASS MUSEUM, INC.

P.O. Box 186
Cambridge, OH 43725-0186

Intersection of US 22 & I-77
Phone 740-432-2626

GREEN ACRES FARM

2678 Hazelton Etna Rd.
Pataskala, OH 43062
(State Route 310 North)

Sat & Sun 1-7 pm 740-927-1882
Antiques, Crystal Glass & Collectibles

Glass Menagerie Antiques

Your Website for quality Glass from the 20's, 30's, 40's & 50's.
www.glasstreasurechest.com

GLASS FROM THE PAST

Maureen Gillis



www.cyberattic.com/~glassfrompast/
email: tomopartners@snet.net
tel: 860-526-3413

ALADDIN LAMP BOOKS

Free History of Aladdin Lamps
Figurine Lamps Wanted
Bill & Treva Courter

3935 Kelley Rd. Kevil, KY 42053
Phone 270-488-2116 FAX 270-488-2055

Fostoria Glass Society of America

Traveling Ambassadors
Ralph & Joyce Rider

For info: 817-545-5856
E-mail: r.rider@sbcglobal.net

Max Miller

Fostoria • Cambridge • Carnival
Depression Glass • Books • Fiesta
and more

THE MARKET PLACE
(713) 467-9450 - BUS 10910 OLD KATY RD.
(713) 461-1708 - RES HOUSTON TX 77043

DEALER DIRECTORY

When writing to these dealers, please enclose SASE

DAUGHERTY'S ANTIQUES
Jerry and Shirley
Antiques and Collectibles • Mostly Glass

www.daugherty-antiques.com
e-mail: sdaugh2515@daugherty-antiques.com

Shows & Mail Orders 2515 Cheshire North
(402) 423-7426 evenings Lincoln NE 68512

Milbra's Crystal Buy & Sell
Replacement and Matching Specializing in
Cambridge,
Milbra Long (817) 645-6066 Fostoria, Heisy
Emily Seate (817) 294-9837 and others.
PO Box 784
Cleburne TX 76033
E-mail: longseat@sbcglobal.net
www.fostoriacrystal.com

BARNESVILLE ANTIQUE MALL
open 7 days, 8 - 5
Roger, Nancy and Brian Mayhugh
Owners
202 N. Chestnut St. 740-425-2435
Barnesville, Ohio 43713 3 floors
EXIT 202 OFF I-70 • always buying & selling antiques

THE TEAM
ESTATE SALES
Liquidations • Appraisals
Consignments • Senior Services
Estate sales with some style and a bit of flair
ED TUTEN 7007 McVay Place
901-758-2659 Memphis, TN 38119
www.teamestatesale.com

THE GLASS CUPBOARD
P.O. Box 652
West End, North Carolina 27376

Marcia Ellis Cambridge Show
910-673-2884 and Mail Order

FINDER'S ANTIQUE HOUSE
3769 Highway 29 North
Danville, VA 24540

(434) 836-6782

Cambridge • Heisey • Duncan • Fostoria
Open Wed - Sat 11 00 to 5 00 (seasonal hours apply)
Monday thru Saturday 10 - 5:30 Sunday 12 - 5:30

Bogart's Antiques
BUY - SELL - APPRAISE - REFINISH
CANE & REED CHAIRS - CLOCK REPAIR

Jack & Sharon Bogart State Route 40
740-872-3704 shop 7527 East Pike
740-820-7439 home Norwich, OH 43707

BAKER FAMILY MUSEUM
805 CUMBERLAND ST.
CALDWELL, OHIO 43724

740- 732-6410
Mon & Thurs 9-4; Fri - Sat 9-5
Call for Sunday Hours

CRYSTALLINE COLORS
Buy, Sell and Appreciate
Cambridge and other Elegant Glass


I Love Cambridge

Lynne R. Franks 216-661-7382
Ohio Antique Malls

CRYSTAL LADY
Thurs - Sat 11-5
1817 Vinton St. Omaha, NE 68108
Bill, Joann and Marcie Hagerty
Shop 402-341-0643 Home 402-391-6730

Specializing in Elegant Glass & Collectibles
www.crystalladyantiques.com

Storck's Antiques
Rick & Joyce
Antiques & Collectibles • Glass & Pottery
Specializing in Fenton, Imperial & Cambridge
Shows & Mail Orders • Storck1@aol.com
Greenfield, MN 55373 • (763) 477-6415


Mother Drucker's
Penny Drucker
Specializing in Elegant Glassware
Shows and Mail Order
P.O. Box 50261 Phone: 949-551-5529
Irvine, CA 92619 888-MDRUCKER
Website: http://motherdruckers.com

Deborah Maggard, Antiques

Specializing in Cambridge Glass,
American Hand-Made Glass & Victorian Art Glass

Please stop and see our extensive collection of
Cambridge Glass at Riverfront Antique Mall in
New Philadelphia, Ohio (I-77, exit 81)
Booths 805 and 812
You won't be disappointed

We buy one piece or entire collections.
Please contact me at 440-247-5632
and leave a message, or e-mail at
debmaggard@adelphia.net

P.O. Box 211
Chagrin Falls, OH 44022

JUDY'S ANTIQUES
Judy Bennett
422 S. Ninth Street (corner of Jefferson)
Cambridge, Ohio 43725

Business (740) 432-5855
Residence (740) 432-3045
CAMBRIDGE GLASS MY SPECIALTY


BRIDGES THRU TIME
Elegant Glassware & Antique Collectibles
Located at Alvin Antique Center
2500 South Loop 35 • Alvin, TX 77511

For Web Storefront and Auctions
Website: www.epier.com/storc/BridgesThruTime
E-mail: cambridge@houston.rr.com

THE JONES GROUP
Cindy Jones
Buy and Sell Cambridge Glass

650 Riverside Drive
Sleepy Hollow, NY 10591

914-631-1656 or E-mail Caprice0@aol.com


Mary Jane's Antiques
Early American Pattern Glass
Depression Era Items

2653 Burgener Drive 217-422-5453
Decatur, IL 62521 mjhumes@aol.com

THE GLASS HOUSE ANTIQUE MALL
Furniture, Pottery, Glass
Antiques and Collectibles
I-70 Exit 146, East on SR 40

8825 E. Pike
Norwich OH 43767 TEL 740-872-3799

GATEWAY ANTIQUE MALL, INC.
JUST NW OF MINNEAPOLIS-ST. PAUL, MN
Next to Super 8 in Rogers, MN
(I-94/I01 intersection)

85 Dealers • 7 days; 10 - 6 • 612-428-8286
ELAINE STORCK, OWNER/DIRECTOR

ISAACS ANTIQUES
(740) 826-4015

See our booths in Penny Court Mall in
Cambridge and at White Pillars Antique Mall
(Route 40, one mile west of
I-70 Norwich, OH • Exit #164)

PENNY COURT MALL
637 Wheeling Avenue
Cambridge, Ohio
100 Booths 15,000 sq ft

HOURS: Daily 10-6 Sunday Noon-5
Closed Easter, Thanksgiving, Christmas

Call for other holiday hours 740-432-4369

MARGARET LANE ANTIQUES
2 E. Main St. New Concord, OH 43762
Lynn Welker (740) 826-7414

Cambridge Glass Matching Service
Hours: Mon-Fri 10-12 AM, 1-5 PM
or by appointment


Our House Antiques
Linda & David Adams
Las Vegas NV

702-838-1341 or
800-357-7169
Web: www.OurHouseAntiques.com
E-mail: David@OurHouseAntiques.com

Convention Highlights



Isabel Giroux examines glass batch samples at educational program

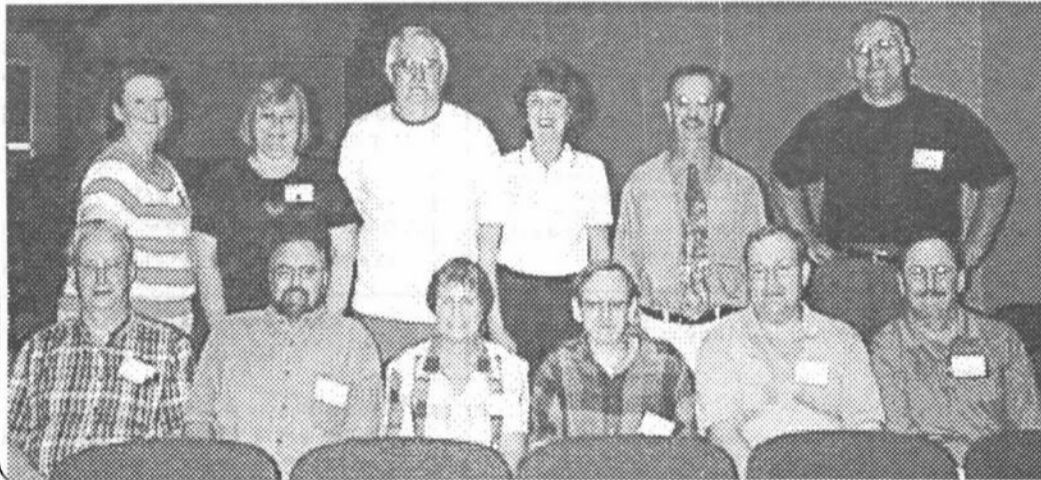


The tables fill & the crowd gathers for Glass ID and Bring & Brag Sessions



Convention Speaker Howard Seuffer explains it all to Dennis Snyder.

The NCC Board of Directors for 2004-2005



Back row: Shelley Cole, Lorraine Weinman, Mark Nye, Cindy Arent, Lynn Welker, Mike Strebler

Front row: Charles Upton, Treasurer Dennis Snyder, Vice-President Sharon Miller, President Ken Filippini, Secretary Larry Everett, Rick Jones*

** - Charles Upton has resigned since the photo was taken. He has been repaced by Frank Wollenhaupt*

NATIONAL CAMBRIDGE COLLECTORS, INC.
P.O. BOX 416
CAMBRIDGE OH 43725-0416

Website: www.cambridgeglass.org
E-mail: NCCcrystalball@aol.com

FIRST CLASS MAIL
US POSTAGE
PAID
PERMIT No. 3
CUMBERLAND OH 43732

FIRST CLASS MAIL

*Membership Renewal Notice:
If the date above your name
is 08-04, this is your last issue,
and your NCC Membership has expired.
Please renew today.*