

# Cambridge Crystal Ball



Published monthly by National Cambridge Collectors, Inc.  
to encourage and report the discovery of the elegant and boundless product of the  
Cambridge Glass Company of Cambridge, Ohio

Issue No. 358

February, 2003

## The Cambridge Colors: Crown Tuscan

by Les Hansen

The publication of *Henry T. Hellmers' Batch Book of Glass Formulae* provided me the motivation to learn more about the production of glassware in general and Cambridge glass in particular. Bill Courter, the Bright Knight of the Aladdin Knights club, published the batch book in limited number. Courter presented a copy to NCC at last year's NCC convention and some NCC members, including myself, also obtained a copy.

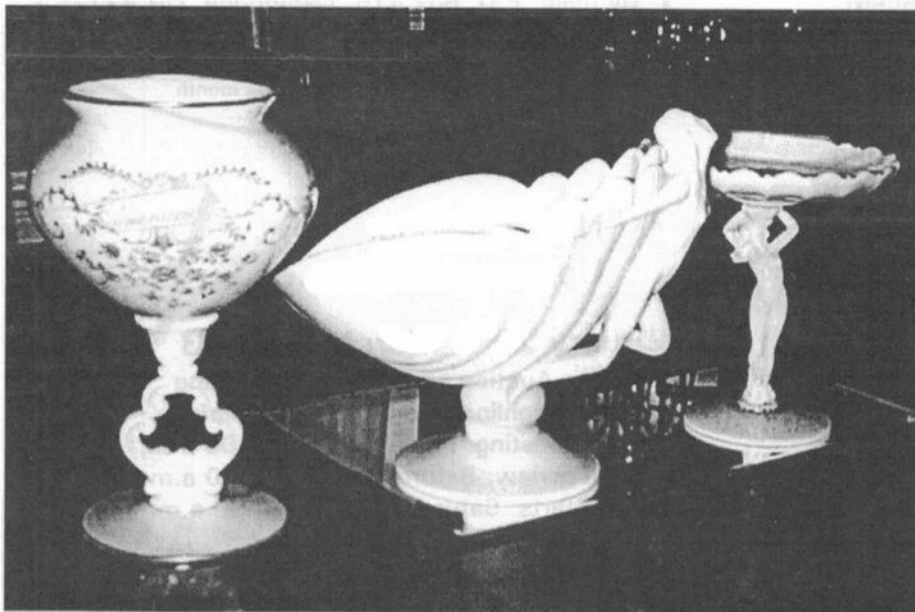
I subsequently met with John Boyd of Boyd's Crystal Art Glass, Inc., in

Cambridge, OH, who is the fourth generation of the Boyd family to be involved in the manufacturing of glass. John talked me through some of the fundamentals of glass production, and he highly recommended the textbook, *Modern Glass Practice*, authored by Samuel Scholes and originally published in 1935. The book was revised five times with Scholes as the sole author. However, a final revised edition was co-authored by Charles Greene and published in 1975. This edition is still available from the

Ceramic Book and Literature Service (website: [www.cbls.com](http://www.cbls.com)). This 493-page book provides a wealth of information on the challenges of producing glassware.

One of the key characteristics of Cambridge glass is that it is "pot" glass rather than "tank" glass. Cambridge glass was made in clay pots that were arranged circularly within furnaces, and most of the Cambridge formulas in the Hellmers batch book are for raw materials that total 750 lbs to 2200 lbs in weight. On the other hand, the making of glass in tanks offers economy of construction of furnaces and economy of glass production, typically in batches weighing several tons. Pot glass is regarded as superior to tank glass, and glass formulas differ depending on whether glass is produced in pots or tanks.

continued on page 11



Three examples of Cambridge's beautiful Crown Tuscan

### In this issue:

**Auction Preview**

NCC By-laws

The Harrisburg Show

Convention News

## National Cambridge Collectors, Inc.

PO Box 416

Cambridge, OH 43725-0416

*Please notify us immediately of any address change.*

### Contacts:

President Rick Jones	(914) 631-1656
Secretary Ken Filippini	(201) 670-0990
Crystal Ball Editor Alex Citron	(434) 296-2531
NCC Museum (phone)	(740) 432-4245
(fax)	(740) 439-9223

### Membership

Membership is available for individuals at \$20.00 per year, and an additional \$3.00 for associate members (12 years of age and older, residing in the same household). Of the \$20.00 dues, \$14.00 is considered the cost of a one-year subscription to The Cambridge Crystal Ball. All members have voting rights, but only one issue of The Crystal Ball will be mailed to each member household.

Multi-year memberships are available:  
2 years for \$38.00; 3 years for \$56.00.

### 2002-2003

#### OFFICERS AND COMMITTEE CHAIRS

President	Richard D. Jones
Vice-President	Tarzan Deel, Jr.
Secretary	Ken Filippini
Treasurer	Dennis Snyder
Sergeant-at-Arms	Charles Upton
Corresponding Secretary	Mark A. Nye
.....	
Acquisitions	Lynn Welker
Archives	Mark A. Nye
Budget & Finance	Mike Strebler
By-Laws	Alex Citron
Endowment	George Stamper
Facilities	Carl Beynon
	Joe Miller
Grants & Fundraising	Sharon Miller
Long-Range Planning	Mike Strebler
Member Services	George Stamper
Membership	VACANT
Mentoring Program	Judy Rhodes
	Ken Rhodes
Museum	Cindy Arent
Nominating	Tarzan Deel, Jr.
Program	David Ray
Projects	Bill Hagerty
Publications	Mark A. Nye
Publicity	Lorraine Weinman
Study Group Advisor	Ken Filippini
Technology	Linda Roberts
Webmaster	Linda Roberts
2003 Convention	Shelley Cole Citron
	Georgia Otten
2003 Auction	Dorothy Rieker
	Squeek Rieker
	Lynn Welker
2003 Glass Show & Sale	Mary Beth Hackett
	Joy McFadden
2003 Glass Dash	Larry Everett
	Susan Everett

## Cambridge Crystal Ball

The official publication of National Cambridge Collectors, Inc., a non-profit corporation with tax exempt status. Published monthly for the benefit of its members. All rights reserved; reproduction in whole or part without written permission of National Cambridge Collectors, Inc., and the author is prohibited.

### Executive Editor

Alex P. Citron

### Research Editor

Les Hansen

### Circulation

Sharon & Joe Miller

### Advertising Rates

#### Display Advertising (camera-ready):

Full Page	\$50.00
3/4 Page	\$40.00
1/2 Page	\$30.00
1/4 Page	\$20.00
1/8 Page	\$15.00

(Add \$5.00 for each photograph)

#### Classified Advertising:

10 cents per word; \$2.00 minimum  
(Abbreviations and initials count as words)

#### Dealer Directory:

\$24.00 for twelve-month contract  
Text limited by standard box size (see page 19)  
Includes FREE listing on NCC website

- Payment in full must be received before advertising will be run.
- Cambridge Crystal Ball and National Cambridge Collectors, Inc., assumes no responsibility for items advertised and will not be responsible for errors in price, description or other information.
- Advertising copy is due no later than the 10th of preceding month for publication.

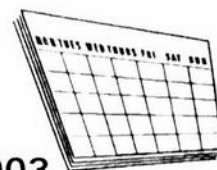
Submissions to

### The Crystal Ball

By mail: P.O. Box 416 Cambridge, OH 43725  
E-mail: NCCcrystalball@aol.com

Deadline: 10th of preceding month

### NCC Calendar Upcoming Events...



### February 28 & March 1, 2003

**Cambridge Auction and Quarterly Meeting**  
**Pritchard Laughlin Civic Center - Cambridge**  
Quarterly Meeting: Friday, 2/28 at 7:00 p.m.  
Auction Preview: Saturday, 3/1 at 9:00 a.m.  
Auction Starts: Saturday, 3/1 at 10:00 a.m.

### June 26-28, 2003

**NCC Annual Convention, Glass Show & Sale**  
**Pritchard Laughlin Civic Center - Cambridge**

### Board of Directors:

Cindy Arent; Tarzan Deel, Jr.; Larry Everett; Ken Filippini;  
Rick Jones; Sharon Miller; Dennis Snyder; George Stamper;  
Mike Strebler; Charles Upton; Lorraine Weinman; Lynn Welker



## President's Message

### Catching Up on Stuff

**"I MARRIED A MORMON"**  
or "How I Became a Cambridge Collector"  
by Connie Driggs

There are several things that I've been meaning to write, but they keep getting passed over, unfortunately, as I build a topic or theme for this monthly message. Hopefully, this month I can play some catch up.

Last June, I wrote a column called "When Did You Know?" which dealt with recognizing you "had this collecting bug" really bad. By mid-June, I got a very nice letter from NCC member Connie Driggs of Sandy, Utah (see, we truly are a national club!). I hope Connie hasn't quit the club because I took so long to acknowledge her very nice contribution, but here goes ... first her letter, then her story ...

June 15, 2002

Dear Rick:

Imagine my surprise to read your "Message" in the June 2002 issue of the Crystal Ball when I had just been thinking about submitting my own "When Did You Know?" insight. The reason the subject even arose in my mind was because I had been thinking, "This publication needs a little more in the way of 'human interest' articles." Needless to say, I think it's a great idea to solicit collectors to submit their own "When Did You Know" columns. If you agree, please consider the following for a future publication.

Sincerely,  
Connie Driggs  
Sandy UT

As I wrote above, Sandy, sorry for the delay in saying "yes," but here is your story. Please remember, Alex Citron has the final say of what gets published based on how much content he has, so I can't guarantee every "When Did You Know" story will be published, but yours is a very nice start. Human interest stories complement our education and preservation mission as fellowship is an important component of an organization like ours.

My Mormon mother-in-law, Lenore Olsen Driggs, passed away unexpectedly in 1996. Her only daughter, my sister-in-law Diane, took charge of inventorying her personal effects which included the kitchen items.

Tucked in the very furthest reaches of a high kitchen cupboard, Diane discovered four opaque pink shell-themed novelties. Two of the items featured "statuesque" nudes and you can imagine this conservative daughter's disdain for the brazen hussies collecting dust in her mother's cupboard.

The other two sisters-in-law also rejected the nudity represented in Lenore's 1943 wedding gifts. I, however, being the black sheep of this family, when offered not only the two captivating Crown Tuscan Krystolshell 5" comports, but also their Crown Tuscan Krystolshell cupboard mates — a 10" 3 footed bowl and a 6" comport, accepted in a heartbeat. I brought my treasures home and enjoyed them for several years simply for their beauty and quality, not having a clue of the value of my inheritance.

Three years later, my own mother and sisters came from California for a visit. I'm also the black sheep of my family because I do not share my female kin's interests — crafts, quilting, yard sales, antiques, etc. However, in the spirit of being a good hostess, when they expressed an interest in visiting the local antique stores, I obliged by taking them to our local antiques mall.

Browsing through the store, I discovered a 7" Crown Tuscan Krystolshell comport for sale for \$150. Imagine my excitement knowing that I had two smaller versions of the same item occupying a place of honor in my home. The tag on the comport indicated that it was "Cambridge" and I couldn't wait to get home to start researching my find.

I returned to the antique store within the week to purchase the beautiful comport, together with two other items of Crown Tuscan which were on display. I have since collected in excess of 30 pieces of Cambridge. Of course, I'll

always be the black sheep of both families now, not only am I the black sheep, my relatives also think I'm a little crazy because of my passion for Cambridge glass. I think, however, that my Mormon mother-in-law would be proud of her influence on me after all.

Thanks Sandy ... you are absolutely one of us now ... a lunatic in love with Cambridge Glass. That's a good thing and yes, I'm sure your mother-in-law is smiling down on you. Thanks for sharing your story.

I also recently had an email forwarded to me by a member who had ideas on something else I wrote a couple months back about those annoying reproduction sales on the Cambridge section of eBay. Will try to pass that along in the next month (or so) if I can. Am sure that many of you feel the same way about these listings.

As February is now upon us, it might be time to start thinking about Convention planning. If you've never been, or it's been awhile since you've been, please give it some thought ... spend time with other member's of your glass family.

In just a few weeks will be our annual benefit auction. I INVITE YOU TO BE PRESENT, either in person or by mail bid. It's always nice to have you there, but we know not everyone can come. Please don't forget your mail bids!

And finally, thanks for all your feedback on how we as a club can get better and better. It is amazing how far we have come thanks to the generosity and passion of so many Cambridge collectors. And, when did you know???

#### In Next Month's Crystal Ball

Cambridge Colors: Carmen

...

1906 Catalog Reprints

...

The Replacements Ltd. Museum

...

2003 Convention Update

# Nominations and Voting A Responsibility of Membership

by Tarzan Deel, Jr.

It is once again time for the Nominations Committee to search the membership and locate those willing to run for a seat on the Board of Directors. The Nominating Committee consists of Tarzan Deel (chairman), Marybelle Teters, Helen Jones and Jane Filippini.

The Nominating Committee tries to put together a slate that offers the membership options for the direction of NCC and how we meet our objectives as an organization. Each year, the membership must elect 3 people to fill seats on the board. This year the terms of Lynn Welker, Sharon Miller and Larry Everett are expiring. Larry has been appointed by the board to fill the term of Bud Walker that expires this year. We do not know if all three incumbents will be seeking reelection to the board at this time, however all three have been asked to submit themselves for reelection.

Between November 2002 and the March Quarterly Meeting, the Nominating Committee will be searching for any other members who will place their names before the membership for consideration for a seat on the NCC Board of Directors.

Anyone interested in giving this essential service to the NCC can contact the committee by mail via the PO Box or at my e-mail address [zanman123@aol.com](mailto:zanman123@aol.com). If you are interested in running for the board or know of someone who would be interested please let me know. Please be sure to include your telephone number so I can talk to you about your correspondence.

In addition, any member in attendance at the March Quarterly Meeting may nominate a candidate from the floor. The one requirement is that the nominee must agree to the nomination; drafting of candidates is not allowed!

This brings us to the second part of the process: voting. Since I have overseen the Nominating and Election process, we have averaged only about 180 submitted ballots out of 1300 members. Last year we had the most ballots cast in the history of the NCC, yet we still fell far short of even a 25% response. Much like citizenship, membership in an organization carries some responsibilities, one of which is to elect fellow members to the Board of Directors.

The Board is to make decisions and enact policies that are in the best interest of the membership and that insure the ongoing survival of NCC as a preservation organization in accordance with its constitution and bylaws. The participation and representation of the membership determines how we succeed as an organization.

Your ballot will have a list of candidates, from which you may choose three and only three. If more than three names are indicated, the ballot is invalid. If the ballot is copied or duplicated, the ballot is invalid. We will be very diligent in making sure the ballots are marked to indicate that each ballot is genuine, and has not been tampered with. All ballots must be in a sealed envelope, so if you choose to send your ballot with your convention registration, please seal the ballot in a separate envelope and then put it in the registration envelope. **Only sealed ballots will be accepted.**

The NCC is your organization. If you choose not to vote and are not happy with the direction of the organization, how can you complain about the decisions reached? So, please make sure you express your opinion by voting. Be a part of the process and participate. Volunteer to help in areas you are familiar with; if you have special talents let us know what they are and what you are interested in doing. But above all – **VOTE!**

## In Memoriam Wilmer C. Fenton

Wilmer C. "Bill" Fenton, Chairman of the Board of Fenton Art Glass, passed away on December 11, 2002. He was 79 years old.

After military service during World War II, Mr. Fenton returned to West Virginia to join his family business, Fenton Art Glass. In recent years, he appeared frequently on QVC Television, discussing and selling Fenton Glass.

Bill Fenton was a leader in the production of American glass over the last fifty years, keeping his company afloat while virtually all others succumbed.

The Crystal Ball extends our condolences to Bill's family.

### *Help Wanted*

The Crystal Ball is looking for a little help in a very important position. We need an Advertising Manager. This position entails keeping records of the paid ads in the newsletter and sending renewal reminders to advertisers, particularly those in our Dealer Directory. We estimate a time commitment of fewer than four hours per month.

If you think you might be able to help us, please send me an e-mail at:  
[NCCcrystalball@aol.com](mailto:NCCcrystalball@aol.com).

Thanks,

Alex

### **Attention: Colorado Members**

What do Denver, Colorado and Cambridge Glass have in common? Not much at the moment, but we'd like to start an NCC Study Group to see what connections we can make. If you have an interest, call NCC member Sandy Mazarakis at 303-423-8923.

# NCC Constitution

## ARTICLE I – NAME

The name of this organization shall be the National Cambridge Collectors, Inc., operating as a non-profit organization under charter granted by the state of Ohio.

## ARTICLE II – OBJECTIVES

Section 1: The members of this organization shall meet together regularly, for the purpose of acquiring a broader knowledge of glassware manufactured by The Cambridge Glass Company in Cambridge, Ohio (1901-1954) and through instruction, discussion and study, actively promote the preservation and collection of Cambridge Glass.

Section 2: The primary objective of this organization is to establish and maintain a permanent museum in Cambridge, Ohio (Guernsey County) for the display and study of Cambridge Glass. The organization will operate on a non-profit basis and all monies realized will be applied to this end.

## ARTICLE III – MEMBERSHIP

Section 1: There shall be two kinds of membership, namely voting and honorary.

Section 2: Voting Membership. Any person, age 12 or over, upon payment of the prescribed yearly dues, is eligible to become a voting member of this organization. Other qualifications shall be as stated in the by-laws.

**Section 3: Lifetime Membership.** *To recognize outstanding service to the organization, a person may be elected a lifetime member. They will have all the rights of voting members, but will not be required to pay dues as long as they remain a member of the organization. The election of a Lifetime Member shall require the unanimous vote of the Board of Directors, by secret ballot. Neither a lifetime member, nor the spouse of a lifetime member shall be required to pay yearly dues.*

Section 4: Honorary Membership. Any person who has distinguished himself in an unusual and praiseworthy manner in promoting the objectives of this organization may be elected to honorary membership. Honorary members shall have the privilege of attending all meetings of the organization, but shall not be required to pay dues, or be permitted to vote or hold elective office and they shall have no interest in any funds or property of

the organization. *The Board of Directors may designate the time frame for which an honorary member is elected.*

Section 5: No territorial limits shall be established for the organization and membership is open to all interested persons.

## ARTICLE IV – MEETING AND FISCAL YEAR

Section 1: Regular meetings shall be held as provided in the by-laws.

Section 2: The annual meeting shall be held as provided in the by-laws.

Section 3: The fiscal year shall begin the first day of January each year.

## ARTICLE V – OFFICERS

The officers of this organization shall be a President, one Vice President, a Secretary and a Treasurer elected from the Board of Directors by the Board of Directors. All officers shall hold office for one year or until their successors are elected and qualified.

## ARTICLE VI – BOARD OF DIRECTORS

Section 1: The Board of Directors shall consist of twelve Directors elected by the voting members of the organization. Terms of office are to be as provided in the by-laws.

Section 2: To be eligible to serve on the Board of Directors, a person shall be at least 21 years of age.

Section 3: The Board of Directors shall be the governing body of the organization and shall have power to make such regulation and take such action, not inconsistent with the Constitution and By-laws as, in its judgement, may be necessary for the welfare of the organization. The decisions of the Board in all organization matters shall be final, subject only to appeal to the voting membership of the organization.

## ARTICLE VII – SURRENDER OF CHARTER

If this organization deems it desirable, by unanimous vote of the active voting membership, to terminate operation of this organization, all assets, records and monies shall be turned over to the Guernsey County (Ohio) Historical Society, with the stipulation that such be used only for the study and preservation of Cambridge Glass. In the event the Guernsey County (Ohio) Historical Society cannot, or will not comply with above stipulation, it shall be turned over to the Corning Museum of Glass; Corning, New York, to be used at its discretion.

## ARTICLE VIII – AMENDMENT OF CONSTITUTION

This Constitution may be amended by a majority vote of the active members in good standing, present at the annual meeting of the organization, upon proposal by a voting member in good standing sixty days prior to the annual meeting, provided written notice of such proposed amendment shall have been given to the members at least ten days prior to the annual meeting.

## ARTICLE IX – ADOPTION OF THE CONSTITUTION AND BY-LAWS

This Constitution shall take effect and be in force upon its adoption.

# NCC By-Laws

## ARTICLE I – MEETINGS

Section 1: Regular Meetings. The regular meetings of the organization shall be held during the months of March, June, August and November, at such time and place as the Board of Directors shall designate.

Section 2: Annual Meetings. The annual meeting shall be held in June for the installation of elected Directors, the presentation of annual reports and transaction of other business. The term of Directors shall officially begin at the close of business of the annual meeting. Charter Directors shall hold office until their respective terms end, per Article VII, Section 4 of the by-laws.

Section 3: Special Meetings. Special meetings of the organization may be called by the President or by a majority of the Board of Directors upon written notice to the Secretary at least five days in advance of said meeting.

Section 4: Quorum. The majority of the active members in good standing present shall constitute a quorum at any meeting of the organization.

Section 5: Rules of Order. Parliamentary procedure in all meetings of the organization, Board of Directors, and Committees shall be in accordance with the latest revised Roberts' Rules of Order, if not inconsistent with the By-laws.

## ARTICLE II – DUTIES OF OFFICERS

Section 1: President. The president shall appoint all committees, preside at all meetings of the organization and the Board of Directors, and perform such other duties as ordinarily pertain to such office. The

President shall be ex-officio member of all committees except the nominating committee. He shall, immediately upon taking office, appoint a Sergeant-at-arms.

In the event a vacancy exists in the office of President, the Vice President shall assume the office and title of President during the unexpired term of the President.

The President shall furnish bond in the amount determined by the Board of Directors, the cost of which bond shall be paid by the organization.

**Section 2: Vice President.** The Vice President shall have the duty of familiarizing himself with all organization affairs. He shall work under and in cooperation with the President and shall preside at meetings in the absence of the President.

**Section 3: Secretary.** It shall be the duty of the Secretary to keep the official record of all members, voting and honorary, provide verification of voting members as required, record the attendance at meetings of the organization, record and preserve the minutes of such meetings, make the required reports and perform such other duties as customarily pertain to such office.

**Section 4: Treasurer.** It shall be the duty of the Treasurer to have custody of all funds, accounting for same to the organization at its annual meeting and at any other time upon demand by the Board of Directors and to perform such other duties as pertain to this office.

He shall collect all dues and funds of the organization and deposit them in a bank or depository named by the Board of Directors. Upon his retirement from office, he shall turn over to his successor or to the President, all funds, books and accounts, or any other organization property in his possession.

The Treasurer shall furnish bond in an amount determined by the Board of Directors, the cost of which bond shall be paid by the organization.

**Section 5: Salary of Officers.** All officers shall serve without compensation.

### **ARTICLE III – BOARD OF DIRECTORS**

**Section 1: Meetings.** The President shall be Chairman of the Board. He shall call regular meetings of the Board at least quarterly. He shall call a special meeting within five days after receiving a written request from three or more Board Members.

**Section 2: Functions.** The Board shall be responsible for the appropriation of all funds of the organization and shall, through the President or other duly authorized member of the Board, approve all vouchers before payment by the Treasurer. It shall designate the bank or depository in Guernsey County Ohio for funds of the organization, approve all investments of funds of the organization and determine the amount of the bond which shall be given by the President and Treasurer. It shall receive and approve budget and the annual audit of the financial transactions of the organization.

It shall pass on all projects recommended by the project committee, which must be approved by a two-thirds vote of the entire Board.

It shall pass upon all grievances, defaults and complaints by or against a member, and may take such action as it deems appropriate on behalf of or against such member. It may, for good cause, declare an office vacant, upon two-thirds vote of the entire Board.

It may fill vacancies that occur during the year. The President shall appoint, and the Board confirm by a two-thirds vote of those in attendance, a member to fill any vacancy occurring. Said appointee shall serve for the balance of the term being vacated.

**Section 3: Quorum.** A majority of the Members of the Board shall constitute a quorum.

**Section 4: Resignation of Board Members.** All resignations from the Board, except for those covered under Article X, shall be made in writing to the President.

### **ARTICLE VI – APPOINTED OFFICERS**

The President immediately upon taking office, shall appoint a Sergeant-at-arms. It shall be the duty of the Sergeant-at-arms to preserve order at all times and perform such other duties as ordinarily pertain to this office.

### **ARTICLE V – COMMITTEES**

**Section 1:** The President shall appoint the following standing committees:

- (1) Membership
- (2) Project
- (3) Program & Entertainment
- (4) Budget & Finance
- (5) Publicity
- (6) Convention
- (7) Study Group Advisory
- (8) By-Laws

**Section 2: Special Committees.** In addition to standing committees, there shall be appointed by the President such special committees as the President and/or the Board of Directors may deem necessary.

### **ARTICLE VI – DUTIES OF COMMITTEES**

**Section 1: Membership.** This committee shall promote activities designed to increase membership and shall perform such additional duties as specified by the Secretary in maintaining the records of membership.

**Section 2: Projects.** This committee shall devise and consider suitable and appropriate projects and shall devise ways and means whereby definite interpretation of the aims and objectives of the organization shall be given expression. It shall take cognizance of all matters of civic or similar nature and recommendations of the Project Committee shall constitute the basis for consideration of all projects of the organization.

Adoption of a project shall require a two-thirds vote of the entire Board of Directors.

**Section 3: Program & Entertainment.** This committee shall arrange and have charge of all programs for the regular meetings of the organization. They shall also have charge of all social functions of the organization, as may be directed by the Board of Directors.

**Section 4: Budget and Finance.** This committee shall prepare a budget of the estimated income and expenses of the association for the year. In the month of May, each year, the Budget and Finance Committee shall cause a **review compilation** of the books to be made by a licensed, Certified Public Accountant, and such statement shall be read to the organization at its annual meeting.

**Section 5: Publicity.** The Publicity Committee shall be responsible for supplying notices concerning the organization meetings to the news media, and further, shall disseminate all interesting information furnished them by officers of the organization and chairmen of various committees. They shall also furnish the editor of the organization newsletter with news items for publication therein, promptly while it still has "news value."

**Section 6: Convention.** The Convention Committee shall have responsibility for all activities conducted during the annual convention.

Continued on page 15

## The Museum's Closed but There's Still Glass in Cambridge

reported by John Corl

Even though the National Museum of Cambridge Glass is closed for the winter season, you can still see a display of beautiful Cambridge glass at the Penny Court Antique Mall, on Wheeling Avenue in downtown Cambridge.

The NCC's display cases were recently filled with a stunning new arrangement of Cambridge colors: Carmen, Light Emerald, Rubina, Emerald and Forest Green. In addition, the displays of Near-Cut and Royal Blue are still there for your admiration.

Members and other visitors to Penny Court can also purchase NCC books and an array of promotional glass souvenirs, all of which benefit the NCC and our museum.

The NCC mini-museum and shop at Penny Court was established shortly after the flood of 1998 as a temporary home for the NCC collection. It has continued to introduce our beautiful glassware to thousands of visitors in the years since. Be sure to stop by the next time you're in Cambridge.

### Seen on ebay...

There's more than just stuff for sale on ebay; there's some great entertainment (mostly unintentional). Here are a few recent listings that are among our favorites:

*"Cambridge Crystal Candle Operas"*

*"Hard-to-find Decagon eight-sided platter"*

*"...extremely rare. I have only twelve of these for sale."*

*"The book refers to this as a frog, but it looks more like a lady to me."*

*"A pair of wine stems, only one is etched."*

You can't make this stuff up!

## Some Enchanted Evening Convention 2003 Update #2

by Shelley Cole Citron & Georgia Otten

It's February, a month for hearts, cupid and love. And we're inspired as our plans continue to come together for "Some Enchanted Evening," the National Cambridge Collectors 30<sup>th</sup> Annual Convention in Cambridge, Ohio, June 26 through the 28<sup>th</sup>.

Last year's convention attracted a record number of first time attendees as well as more than 200 returning conventioners. We want to see the same kind of numbers this year. As has been said so many times, if you have not yet experienced the National Museum of Cambridge Glass, you must see it to believe it and convention has got to be the best time to see it! We believe you will find it most enchanting!

Here's a little peek at some of what we have planned. In addition to our famous show and sale, we have scheduled educational programs: Jim and Nancy Finley will present a program on the Cambridge Swans and Bill Dufft will educate us on the many pieces made by the Farber Brothers Company which use beautiful Cambridge Glass as a centerpiece. We'll have the beloved Glass ID and the even more beloved Bring & Brag. Anyone interested in Study Groups (either existing or starting up) will have a chance to share ideas at a Joint Study Group meeting led by Study Group Advisor, Ken Filippini.

If you are attending your first convention, be sure to take the time to attend the Orientation Meeting. This is where you can get pointers on getting the most out of your weekend in Cambridge. And be sure to read Judy Rhoads' article on the Mentor Program on page 14 of this issue!

So think of hearts and cupid and love and make plans for June to take part in "Some Enchanted Evening" at our 30<sup>th</sup> annual convention! Don't forget to check the hotel listings and make your reservations NOW!!

### 2003 NCC Convention

#### Motel Information

All of these motels are located in Cambridge at Exit 178, Ohio route 209 off Interstate 70. Remember to mention that you are attending the National Cambridge Collectors Convention. There are limited rooms available at these rates. When they are booked, rates may be higher.

#### AMERIHOST CAMBRIDGE

Route 209 South  
800 434-5800 or  
740 439-1505  
\$60 single or double,  
includes continental bkfst  
(indoor pool)

#### BEST WESTERN CAMBRIDGE

1945 Southgate Parkway  
740 439-3581  
\$55 single or double,  
includes continental bkfst

#### HOLIDAY INN CAMBRIDGE

2248 Southgate Parkway  
740 432-7313  
\$69/night, 2 or more nights  
\$75/night, 1 night stay

#### COMFORT INN CAMBRIDGE

Southgate Parkway  
740 435-3200  
\$60 single or double  
includes continental bkfst  
Evening snacks in the lobby  
(Indoor Pool)

#### DAYS INN CAMBRIDGE

2328 Southgate Parkway  
740 432-5691  
\$59 single or double  
includes continental bkfst  
> Must book by 4/1/03 for  
this rate

#### BUDGET INN - DEER CREEK

2325 Southgate Parkway  
740 432-6391  
\$45.95 single or double  
weekly rates available  
(indoor pool)

# Cambridge Display Shines in Harrisburg

by Ken Filippini

On a beautiful fall weekend, the Elegant Glass Sturdy Group once again set up a glass display and NCC book sales table at the State Farm Show Complex in Harrisburg PA. The show, which was held on November 22-24, featured 300 booths of quality antiques along with six special glass displays. At this years semi-annual show the Elegant Glass Study Group choose to display a vast array of Cambridge vases. The case, as always, was tastefully colorful; a treat to behold. For that we have Bill and Yvonne Dufft to thank.



*Some of the Cambridge vases on display at Harrisburg*

- 402 – Amber Tulip etch
- 1242 – Etched Rosepoint,
- 1023 – Pink, etched Rosalie
- 1305 – Keyhole CT, GE Diane

This is just a sample of the Cambridge vases on display in Harrisburg; there were many other beautiful examples too numerous to mention. As you can see, it was a breathtaking display of diversity in color, shape and decoration for which the Cambridge Glass Co. was renowned.

The Sales table was covered with books, Scotties, Jadite tumblers, logo pins, and was visited by many enthusiastic Cambridge lovers. Study Group members Charlie and Loretta Weeks, Bill and Yvonne Dufft, Ken and Jane Filippini, Merle Scott and Joanne Berringer took turns manning the booth. Special thanks to Shelley and Alex Citron and Tarzan Deel who graciously joined with the Study Group members to man the booth. Their help was instrumental in making the exhibit the success it was. The Study Group once again wishes to thank Walter Ludwig, a fellow exhibitor for the Heisey Club, for his generous loan of 16 assorted favor vases, including a rare pistachio one.

Vases on display in the case included:

- 1297 – CT with black enamel bands
- 274 – Black with GE Rosepoint
- 339 – Royal Blue Caprice in Farber holder
- 3400/102 – CT with red enamel
- 3797/191 – Ebon with gold birds
- 1228 – CT with GE Portia
- 3011/25 – Carmen Nude Ivy Ball
- 46 – Sea Shell in Crown Tuscan Charleton decoration
- 1305 – Keyhole stem Carmen
- 1237 – Etched Chantilly with Sheffield Sterling base
- 10 ¼" Block optic Rubina
- 278 – with GE Diane
- 17 ½" Mardi Gras
- 83 – Pink Betty gold band
- 279 – Emerald with bird etch

As with all the displays that are currently being done across the country by generous Cambridge members, the NCC was made visible. This strengthens the Club and introduces Cambridge Glass and NCC to people in a dramatic and friendly way. In turn, that surely leads to greater interest and increased membership. These exhibits not only raise needed funds, but also bring information and a sense of community to Cambridge Glass collectors who are thirsty for the comradeship that NCC makes available to them. Exhibits like these are a vehicle, which will help keep NCC on track to a future filled

continued on page 20

## Members of the Elegant Glass Study Group at Harrisburg (L to R):

- Jane Filippini
- Ken Filippini
- Yvonne Dufft
- Bill Dufft
- Loretta Weeks
- Charlie Weeks





# 2003 Auction Preview

## "Sure to be one of the best ever"

by Dorothy & Squeek Reiker

We cannot believe that it is auction time again. We find it even harder to believe this is our fifth year on the auction committee. The highlight for us comes in November when we unwrap all this beautiful Cambridge glass. It's like one big birthday party, except we cannot keep the presents! The success of this yearly all-Cambridge auction is most important as it benefits the Museum Fund. After reviewing the catalog last month, hopefully you found something of interest for your collection.

Being at the museum and looking at all the wonderful and unusual items that Cambridge made is always a treat. This benefit auction is one of the few times each year we get to see such unusual pieces of Cambridge glass and are actually allowed (and encouraged) to purchase them. Some of the unusual items this year are:

- 14. Smoke gyro-optic ranch tumblers
- 20. Moonlight Blue Simplicity goblet, engraved Danube
- 40. #3106 sherry, etch Lily-of-the-Valley
- 44. Footed refrigerator jar and cover
- 48. #1401 Heatherbloom Jefferson goblet
- 53. White Rain low sherbet
- 87. #3122 Heatherbloom goblet, etch Diane
- 113. Farber Chrome sherbets with Carmen inserts( in original box)



A sampling of the fabulous Cambridge stems in this year's auction. And look at that "life-saver" decanter with the unusual decoration by Charleton!!!

- 126. #1066 Carmen sherry, cut leaves on foot
- 170. Carmen aero-optic globe vase with Amberina effect
- 191. #881 Willow Blue tumbler, etch Hunt Scene
- 244. Amber rooster muddler
- 261. Peach-Blo crackle flip vase
- 280. Carmen Martha Washington goblet, etch #401 Vintage
- 287. Amber after-dinner cup and saucer, etch Portia
- 368. Windsor Blue seashell 3-footed bowl

Some of our favorite decorated items are:  
 148 - 151 Etch #715 Willow Scene, blue enamel encrusted plates, cups and saucers

- 166 & 291. Carmen, gold encrusted, Portia etch tumblers and 2-handled sandwich plate
- 174. Amber flip bowl and candlesticks, gold silk screen Apple Blossom
- 219. Crown Tuscan shell flower holder, Charleton roses and gold
- 228. Amber cake salver, gold encrusted with flowers and butterflies
- 300. Crown Tuscan seashell covered candy box, Sterling sea horse decoration
- 317. #532 Ebony comport, D/619 gold encrusted trim
- 352. Helio tall comport, white gold encrusted #519 etch.

There are three colors you still might need for your collection:

- 42. Turquoise gem plate
  - 45. Goldenrod Martha Washington bowl, etch #715 willow border
  - 63. Odd Emerald Green 4-1/2" vase
- We have a feeling that Goldenrod is missing from several collections (including ours).

- Crystal etched pieces are highlighted by:
- 31. Covered marmalade, etch #3 Rearing Horse (how often do you see this etch?)
  - 171. #2368 blown vase, etch Betty



An array of "Near-Cut" in the auction

continued on page 10

## Auction Highlights (from page 9)

- 212. #3500/8 fruit basket, etch Minerva
- 260. #647 2-lite keyhole candlesticks, etch Candlelight
- 272. #7606 crème de menthes, etch Marjorie
- 330. #3900/114 martini jug, etch Chantilly
- 358. #3106 pousse café, etch Elaine
- 366. Pristine cocktail shaker, etch Diane
- 393. #1528 vase, etch Rosepoint

If you need a punch bowl for those special occasions, two are available. A crystal Cascade set (complete with Cambridge labels), and a crystal Tally-Ho set with amethyst-handled cups.

This auction has a large assortment of cordials including a two-tone Apple Blossom etch, two nice groupings of NearCut and Caprice, and nudes in many sizes, styles, and colors that includes a Carmen cigarette box (this is the first since our involvement). You cannot afford to miss this auction!

Now that you know our "highlights", we are curious to know yours. We will all find out at the auction. Make your plans now to attend this all-important benefit auction. If you cannot attend, please mail in your absentee bids (instructions are found on front of the auction catalog in your January Crystal Ball).

This is an excellent opportunity to add a few good pieces of Cambridge glass to your collection, and to support the new museum at the same time. We look forward to seeing you in Cambridge at the benefit auction on Saturday, March 1.



*Opagues in the Auction*

## NOW AVAILABLE

Table of Contents for  
**The Crystal Ball**  
Issues #69 - #320  
(Jan 1979 - Dec 1999)

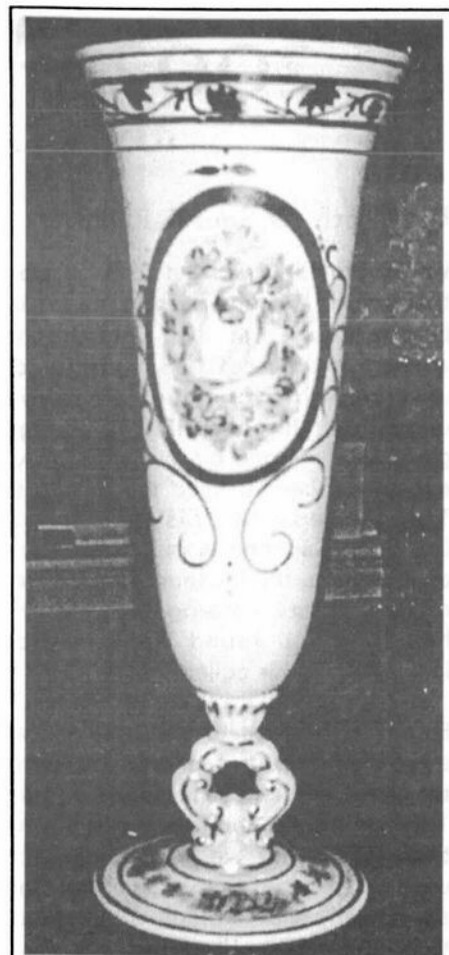
**Only \$2.00**

See page 18  
for ordering information

Back Issues of  
**The Crystal Ball**  
are available

Sold by the year:  
1999 • 2000 • 2001 • 2002

**\$5.00 per year**  
see page 18 to order



*Many Crown Tuscan pieces were decorated by Charleton*

## A Beautiful Holiday Table in Crystal Caprice submitted by Linda Christensen of Bellevue, Nebraska



# Crown Tuscan

from page 1

Hellmers began employment with Cambridge in 1930 and immediately developed the formula for Crown Tuscan. His batch book has six pink opal (opaque) formulas with Cambridge listed as the manufacturer. The first entry is dated April 1, 1930 and is listed with the ivory-colored opals. It is labeled with the name Crown Tuscan and with the notation that it is for both pressed and blown glassware. The five other Cambridge entries are in the pink opal section of the Hellmers batch book with the following dates and notations:

9/3/32	Too White, Did Not Strike
9/6/32	Good Pink for both Press & Blown (used but little)
9/8/32	Crown Tuscan, Color Brownish caused by Arsenic
9/14/32	Crown Tuscan (Arsenic Removed for spec. Press job)
9/22/32	Crown Tuscan, Dense Pink (Shell Pink) for Blown Ware

The formula dated 9/8/32 is identical to the formula dated 4/1/30. It is also identical to the formula provided by Hellmers to Courter on August 23, 1973, when Courter quizzed Hellmers regarding the differences in the formulas for Aladdin's Allacite color (tank glass) and Cambridge's Crown Tuscan (pot glass). Hellmers developed both of these colors, but the formulas differ. Past articles in the Crystal Ball as well as information in the *Colors in Cambridge* indicate that Crown Tuscan was introduced to the public in September 1932, although Hellmers developed this color more than two years earlier in April 1930. Twelve raw materials were used for the original formula (4-1-30 and 9-8-32) for Crown Tuscan:

Sand	1000 lb
Feldspar	250 lb
Soda ash	225 lb
Fluorspar	200 lb
Cryolite	100 lb

Potash	100 lb
Barium Carbonate	60 lb
Zinc Oxide	50 lb
Nitrate	30 lb
Arsenic	5 lb
Selenium	4 ¼ lb

Selenium is a colorant that imparts the pink color to Crown Tuscan. Some additional information on raw materials: Fluorspar (calcium fluoride) is the raw material that causes (in conjunction with feldspar) glass to be opaque. Cryolite is also used in the production of opaque glass, but it is an expensive ingredient that is mined in Greenland.

One of the key features of Crown Tuscan glass is the range of colors. The *Colors* book states this perfectly: "It is found in a wide range of shades from a dark tan through shades of pink to almost white. Some pieces show streaks that approach brown in a slag effect." However, collectors have noted that a high percentage of the items that have the darker shades are from molds that were used only during the early years of production of Crown Tuscan. In particular, pieces with the Crown Tuscan stamp signature have a higher likelihood of having dark coloration, and these items date to the very early years of production, probably prior to 1935.

Arsenic is used as a raw material to help remove bubbles ("seeds") from glass and to control the coloring effect of iron in glass. Iron is an impurity in raw materials that imparts a blue-green color to glass. Arsenic tends to shift the coloring effect of iron from blue to yellow. It is interesting that Hellmers' notation ("color brownish caused by arsenic") on the original formula for Crown Tuscan could explain the darker color and sometimes slag effect found in some, especially early production, Crown Tuscan items.

Another batch book has surfaced that contains Cambridge formulas, and it has numerous formulas for Crown Tuscan throughout the 1940s. By 1942, the amount of arsenic in the Crown Tuscan formula had been halved and by the mid-1940s arsenic

had been almost completely or completely removed from the formula. Also, these formulas from the 1940s have less cryolite (expensive and perhaps hard to get from Greenland during wartime), less borax, and more feldspar on a percentage basis than the original formula. It is becoming very clear that typically more than a single formula was used to produce Cambridge colors over time.

I hate to revive the old debate about the colors of Coral versus Crown Tuscan; however, the notes and alternative formulas for Crown Tuscan (the ones dated 9/14/32 and 9/22/32 have no arsenic) in the Hellmers batch book suggest that care might have been taken to make sure that arsenic wasn't used (to counteract the coloring properties of iron) in the Crown Tuscan formula when making Seashell items. This could help explain why very few Seashell items have a brownish color, but instead tend to have more of a bluish tint compared to some other Crown Tuscan items. The tan, brown, and slag coloration of some Crown Tuscan items is likely the result of arsenic in the formula as well as the presence or absence of iron as an impurity in the raw materials used to make glass of this color.

Next, we will review the formulas for the color called Carmen.

---

## WANTS

Published as a service to the membership; these listings are free on a trial basis. Up to 10 per month will be printed (first come, first served). Each listing will be printed only once; it must be resubmitted each month. Send listings to address inside front cover or e-mail to:

NCCcrystalball@aol.com.

---

### Wanted: Mt. Vernon Pattern in Royal Blue.

Rich & Linda Desmond  
(732) 251-0399  
fax (732) 251-3407  
E-mail Rich1NJ@att.net

---

### Wanted: 3400 Candy Box Cover, etched Candlelight

e-mail: lynnmartha@lisco.com

# Study Groups

NCC has several study groups; these are the groups currently active and holding regular meetings. Listed below is contact information for these study groups.

If there is no study group in your area and you are interested in starting or joining a new study group, please contact the Crystal Ball or call NCC Study Group Advisor Ken Filippini at (201) 670-0990.

**#13 - Miami Valley Study Club**  
Miami Valley area, Ohio  
Larry Everett  
db0098@dragonbbs.com  
(937) 675-6491

**#14 - The Cambridge Cordials**  
Cambridge, Ohio  
Lorraine Weinman  
blweinman@hotmail.com  
(330) 966-9376

**#15 - North Texas Cambridge Study Group**  
Dallas area, Texas  
Scott Pierce  
scottpierce1@msn.com  
(817) 427-9510

**#16 - Elegant Glass Collectors**  
PA & NJ  
Bill Dufft  
billnvon@aol.com

**#17 - The Columbus Wildflowers**  
Columbus, Ohio  
Barbara Wyrick  
bwyr@ee.net  
(614) 291-0361

**#18 - The Cambridge Triangles**  
VA, MD, DC  
Alex Citron  
apcpenguin@aol.com  
(434) 296-2531

*New Study Groups are currently being organized in the Canton area of Ohio, in southern Michigan, in Colorado and in south Florida. For more information, call Ken Filippini at (201) 670-0990.*

## Study Group #13 Miami Valley Study Club

**November 11, 2002:**

The Miami Valley (Ohio) Study Group held their monthly meeting on Tuesday, November 11, 2002 at the Huber Heights Public Library at 7:00 PM. The meeting was chaired by President Larry Everett, and sixteen members were present.

Led by program chairperson, Ron Hufford, the following schedule for programs for the coming year was developed:

December - Christmas Party

January - Milk Glass - led by Georgia Otten

February - Strange/Wierd/Unusual Items (Bring a piece of Cambridge that you consider strange, wierd, or unusual. Give information about your piece.)

March - Book Look: 27-29 Catalog (Bring your catalog, having looked through the catalog beforehand to find something unusual, that you never knew before, that you find puzzling, that you have never seen before. Be prepared to share with the group.)

April - Lookalikes (Bring examples of easily confused patterns or items that are often mistaken for Cambridge. Be prepared to tell how you can distinguish them from Cambridge.)

May - Floral Etches - (Bring examples of your favorite floral etch and some research information on your pattern.)

There were fourteen members of the Miami Valley Study Group present at the November Quarterly Meeting, and a report was given about the meeting and the informative program. Georgia Otten reported on plans for convention.

Show and Tell:

#1321 Amethyst Decanter;  
#6004 10" Crown Tuscan Vase with Gold Encrusted Candlelight;  
#3011 Nude Stem Compote;

Special Article footed Compote, Ivory with Enamel Daisy decoration;  
#21 Everglade Milkglass Vase;  
11 1/2" Chelsea Ware Vase;  
#1270 6 1/2" Gold Krystal Candlestick;  
#124 3 1/2" Ivory Basket;  
#3400/101 76 oz. Jug with Cutting;  
#353 Martha 8 1/2" Pickle, etched Chantilly.

Program: Dave Rankin and Lynn Simonelli from the Boonshoft Museum of Discovery led a planning session for the display that our Study Group is doing in cooperation with the Museum. The title is "Earth, Sand, and Fire: Ohio Glass and Pottery 1000 BC to 2003 AD". The exhibit opens January 25, and lasts for six months.

Our next event will be our Christmas party on December 14 at Bev and Will Acord's. Each family will bring a wrapped gift for the gift exchange. The gift must be a piece of Cambridge glass that was purchased for \$15.00 or less, but is worth more than \$15.00.

Respectfully submitted,

Judy Rhoads  
Secretary, Pro Tem

**December 14, 2002:**

Will and Bev Acord were hosts for the annual Christmas Party of the Miami Valley Study Club on December 14. The party was attended by Bev and Will Acord, Diane and Ernie Gary, Ron and Norma Hufford, Nancy Misel, Mac and Georgia Otten, David Rankin, David Ray, Ken and Judy Rhoads, Ralph and Linda Warne, Helen and John Wilt, and Frank and Vicki Wollenhaupt. This was a chance to visit the Acord's beautiful new home and to see their wonderful collections of Cambridge swans and Rose Point.

There was a brief meeting for Georgia Otten to update the club on progress toward the 2003 convention, but this was primarily a celebration. There were wonderful refreshments, as each member brings a specialty dish to share.

Planned entertainment for the evening was a take-off on the children's game of "My name is Alice", only the blanks were filled in with Cambridge terms. The real entertainment of the evening is the spirited gift exchange. Each member family brings a wrapped gift of a Cambridge item purchased for less than \$15 that has a value of more than \$15. It is truly amazing to see the items in the exchange that meet this criteria. For some members, it is a yearly project to find an item to put in the gift exchange. The items included this year were a Lexington plate in Madera, a two part relish with Wildflower etch, a crystal Mt. Vernon ice bucket, #1206 pitcher in dark green, a Caprice nut dish and a Caprice 3-part relish in alpine, #3790 crystal comport with Minton wreath cutting, a calla lily candlestick in verde green, a nut dish with Chantilly etch, #136 crystal Caprice comport, and a near cut cruet in Marjorie.

Everyone had a most enjoyable time.

### **Study Group #15 North Texas Study Group October 27, 2002:**

Halloween was definitely in the air as everyone converged on Bert and Donna Kennedy's house for our October meeting. We filled their table with black, yellow, and amber pieces.

We had pictures from our Key-Hole display at the "Fostoria Age of Elegance" show on October 12-13. Thanks to everyone who helped make this a success. It was reported that attendance was up at the show in addition to the number of dealers. Pictures of the display as well as a write-up have been submitted to the Crystal Ball.

This meeting had a Halloween color theme — "the colors black, amber and yellow". Each person was responsible for describing the pieces of glass that they brought. It was quite an assortment with only one duplicate — an ebon square ashtray with label.

We decided upon a significant change to our Christmas meeting. Instead

of having it on Sunday afternoon, we will meet Saturday evening at the Pierce's for food and exchange. The exchange has a \$20 limit. We're planning ahead to January with the meeting at Bryant's on "stoppers." Show and Tell included: 410 light emerald fan gyro-optic vase etched Cleo, 2357 vase etched chrysanthemum, 9403 pink 12 oz tumbler E2019, 3078 12 oz. footed tumbler red with crystal foot and a 3078 goblet crystal with a red foot, and a 3050 pink goblet with original label.

Donna served vampire-liquid (okay, spicy tomato soup) out of a Fostoria Tom & Jerry set as we nibbled our various snacks.

### **December 7, 2002:**

Members of the North Texas Cambridge Study Group converged on the "Caprice Fortress" in Keller Texas aka the home of Scott and Gwenell Pierce for our Christmas meeting and exchange. Their house had recently gained two new cabinets, which were used to display some of the Caprice collection.

Thanks to the host for providing the main course. Everyone helped make the meal a success by bringing a dish (of food!) to share. The meal and conversation made for a grand evening. We took a suggestion from the NCC convention and asked everyone to bring their glass for the dinner. We had: moonlight blue caprice, moonlight blue alpine caprice, rondo, 1402/100 Carmen tally ho goblet, 1066 forest green goblet, 3500 carmen goblet, 3126 goblet with platinum rim, and 3600 goblet with Blossomtime. Somehow, two Morgantown stems managed to get onto the dinner table.

After dinner, we moved to the living room for the really fun stuff. Everyone brought a piece of Cambridge glass that they had found for under \$20 for the blind gift exchange. People could select an unopened package or "steal" a package from someone else. However, a particular package could

only be stolen twice. Some of the delights that came from under the tree included: 12 oz. royal blue 1402/100 footed tumbler, gold krystal 3900 cup and saucer sets, Rosepoint single light candlestick, 1263 oil & vinegar, 960 aero optic moonlight blue sugar, heatherbloom Georgian tumbler, and an amethyst cordial. Santa had been busy!

There were only a couple of items for Show and Tell: 1448 10" crystal vase, 1066 late mulberry goblet with matching 5" star, and a 179 crystal Caprice 32 oz pitcher.

It was a great evening and thanks to everyone for attending.

Submitted by Freeman Moore

### **Study Group #17 The Columbus Wildflowers**

On Thursday, December 5th, 2002, the Wildflowers met at the home of Rose MacConkey at 7:00 pm for an evening of fun, food, gifts and games at our 3<sup>rd</sup> Annual Christmas Party / Gift Exchange. Amidst Christmas decorations and a table centerpiece of a #3400 Carmen compote with silver overlay flanked by Forest Green Caprice 3-lite Candlesticks with red candles, we enjoyed a delicious potluck meal of baked ham with all kinds of wonderful side dishes and desserts.

There was no formal meeting, but we got right into playing some Christmas games. The first was a "Cambridge Etchings" contest where everyone had 2 minutes to identify as many of 15 etchings as they could. David Ray was the winner with 14 correct, and received a peppermint scented oil lamp as a prize.

Our second contest was "Fractured Christmas Carols" where we had to decipher things like "Far off in a Feedbox" to be the carol "Away in a Manger." Ralph Warne won a silver

## Study Group Reports (cont'd)

reindeer candleholder for figuring out the most carols.

Then, if we had a time machine to go back so the Cambridge Glass Factory could design the one piece we wanted to bring back with us – what would that piece be? Ken Nichol won a decorative Christmas pillow for his dream piece of a 5 ½ foot lifesize Bashful Charlotte on an Ebony base with silver overlay detailing.

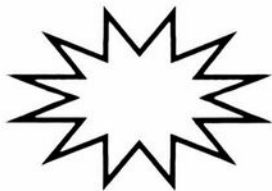
Rose also passed out some cute Christmas readings, including what kids really hear when they hear Christmas carols.

The fun continued with our “Robber Gift Exchange” of things we had found for \$20 or less that were worth more than \$20. We each picked a number and then could take a gift from the table or “steal” someone elses. After a rather rowdy time, we all opened our gifts. They included: a pair of Everglade line crystal candlesticks; an Ivory footed comport; a Blossomtime Wine with #3600 stem; a Forest Green 4 part relish on Farber base; a signed Decagon oval platter in Willow Blue; and an Ivory center handled sandwich server.

Everyone had a great time, and our meeting adjourned at 10:30 PM.

Our next meeting will be January 9<sup>th</sup> at the home of Linda Roberts. New members in the Columbus, Ohio area are always welcome and can contact either Linda Roberts at [lrobert2@columbus.rr.com](mailto:lrobert2@columbus.rr.com) or Barbara Wyrick at [bwyr@ee.net](mailto:bwyr@ee.net)

—respectfully submitted by Barbara Wyrick, Secretary



## THE MENTORING PROGRAM

by Judy Rhoads

Again this year, we will be using our very successful Mentoring program during Convention. Last year we had 25 volunteer Mentors and around 30 First Timers at Convention. The program was begun as part of an effort to reach out to new folks and make Convention a friendlier and more welcoming place for First Timers.

During an enthusiastic Orientation Meeting at the beginning of Convention, First Timers and Mentors met and shared their collecting passions. During Convention, Mentors and First Timers were seen together chatting, admiring new purchases, consulting, and often laughing raucously. Connections were made, friendships were begun. All agreed that it was a very positive experience.

You are invited to become a Mentor if you are an “experienced timer” (I refuse to call us “old timers”), if you are willing to attend the Orientation Session and most or all Convention activities, and if you are willing to make yourself available to First Timers and make them feel comfortable and welcomed to their first convention. Mentors, First Timers, and Board Members will have designations on their badges for easy identification.

There will be an opportunity to volunteer during the Quarterly Meeting/Benefit Auction.

In addition, you may volunteer by writing to me at the NCC address or by e-mail at: [kjrhoads@aol.com](mailto:kjrhoads@aol.com). Hope to hear from you!

---

---

## Remember When...

(this just might be a new monthly feature)

### Ten Years Ago:

The cover story in The Crystal Ball was about the 1993 Auction. Lynn Welker wrote about the rare and unusual entries in that year’s auction. Included were an Owl Lamp, a Ram’s Head Punch Bowl, a Blue Cloud Ice Tea, a Cinnamon Everglade Vase and an experimental opaque ivory creamer.

Inside: the minutes of the November, 1992 Quarterly Meeting. The President was Joy McFadden; there were 41 NCC members at the meeting, including 10 board members. Our membership stood at 1,444. We had \$69,000 in the bank.

Mark Nye reported that work was continuing on the Caprice book.

There were reports from four study groups: Chicago’s “Nudes,” “Miami Valley,” Cambridge Cordials,” and “Elegant Glass Collectors.”

### Twenty Years Ago:

The cover story was by President Willard Kolb, entitled, “Thoughts.” Willard wrote about the great old glass company ads he enjoyed seeing in old magazines. There was a proposed change to the By-laws printed, which would have limited the re-election of Directors. Apparently it was not adopted.

Inside were reports from four study groups, all of which are no longer with us: Michigan Caprices, Fingerlakes, Florida Everglades and Cambridge Buffs.

There was a fascinating reprint of an old ad for a Cambridge baby bottle, called the “Mother Goose Bottle.” How many of us knew Cambridge ever made such a thing?

Oh... NCC membership was only \$13 a year.

# NCC By-Laws

from page 6

Section 7: Study Group Advisory. This committee shall maintain official record of the activities of approved study groups. They shall furnish assistance and guidance to the study groups, including, but not limited to, suggested topics for meetings, group projects and research activities. They shall further make newsworthy information and current listings of contact representatives available to the Publicity Committee.

Section 8: By-Laws. The By-Laws Committee shall review and make recommendations to the Board of Directors regarding needed or proposed amendments to the Constitution and/or by-laws. This committee's activities will best reflect the changing needs of the organization.

## ARTICLE VII – ELECTION OF DIRECTORS

### Section 1:

(a) The Directors of the organization shall be elected by mail, prior to the annual meeting each year.

(b) At the regular meeting six months prior to the annual meeting, the President shall appoint a Nominating Committee of at least three members. The Chairman shall be the immediate past President, if then an active member of the organization. Should the immediate past President be unable to chair this committee, the Board of Directors shall appoint a Chairperson, selected from the members of the committee.

(c) At the regular meeting three months prior to the annual meeting, the Nominating Committee shall present a report, giving the number of Directors to be elected and presenting one or more nominations for each vacancy, at which time additional nominations will be entertained from the floor.

(d) The consent of all nominees must be obtained prior to his/her nomination.

### Section 2:

(a) At least 30 days prior to the annual meeting, a ballot containing all nominees for Board vacancies will be mailed to the entire voting membership. This ballot must be returned to the National Cambridge Collectors, Inc. no later than seven days prior to the annual meeting.

(b) The results of this ballot shall be announced at a membership function prior to the annual meeting.

(c) The nominees receiving the largest number of votes so cast shall be declared elected for the term of office beginning at the close of business of the annual meeting.

Section 3: Election of Officers. Officers shall be elected as provided in Article V of the Constitution.

(a) This shall occur at a special meeting of the newly established Board of Directors, at a time which shall not exceed thirty days after the annual meeting.

(b) All nominees for office must have previously agreed to accept their nominations.

(c) Officers shall assume duty immediately upon their election.

Section 4: The Board of Directors shall consist of 12 members elected from the roll of active voting members. The term of office shall be for 4 years. To provide for continuity of operations, the original Board of Directors shall serve for the following terms:

3 persons for 1 year: March 1973 – May 1974

3 persons for 2 years: March 1973 – May 1975

3 persons for 3 years: March 1973 – July 1976

3 persons for 4 years: March 1973 – July 1977

## ARTICLE VIII – MEMBERSHIP DUES

Section 1: Annual membership dues shall be as determined by the Board of Directors.

Section 2: Family Member. Each additional household member is eligible to become a voting member upon payment of prescribed dues per year.

Section 3: All dues shall be payable when billed by the Treasurer. No member shall be deemed in good standing who is in arrears more than thirty days in the payment of his dues.

## ARTICLE IX – RESOLUTIONS & SUBSCRIPTIONS

Section 1: No resolution or motion to commit this organization on any matter shall be considered by the organization until it has been considered by the Board of Directors. Such resolution or motions, if offered at an organization meeting, shall be referred, without discussion, to the Board, which after having given consideration to the matter, shall submit its recommendation to the organization. Having received the recommendations of the Board, the organization may then proceed to take such action as may deem proper to the majority.

Section 2: No assessments shall be permitted to be placed upon the membership of the organization, neithershall any person or organization be permitted to appeal for funds for any purpose whatsoever before a regular meeting of the organization.

## ARTICLE X – TERMINATION OF MEMBERSHIP

Section 1: Resignation of any member when delivered in writing to the President or Secretary shall become effective immediately upon its acceptance by the Board, providing all indebtedness of such member to the club has been paid.

Section 2: Any member owing dues or otherwise indebted to the organization for a period of thirty days from the date when same becomes due and payable may be suspended and deprived of all privileges of the organization. If he applies for reinstatement within sixty days from the date of such suspension and pays all amounts owing to said date, the Board of Directors may, at its discretion, reinstate the member to good standing; otherwise he shall stand dropped from the roll of members.

Section 3: Any member who, by personal or business conduct, violates the principles or ethics of the organization may be expelled from membership by the Board of Directors by a two-thirds vote of the entire Board of Directors, at a meeting called for that purpose, provided that said member shall have been given ten days notice in writing of such pending action together with a copy of the complaint against him, and shall be given an opportunity for a full and fair hearing.

## ARTICLE XI – AMENDMENT OF BY-LAWS

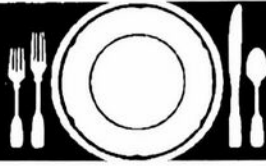
Section 1: These by-laws may be amended by a majority vote of the active members in good standing present and voting at any regular meeting of the organization, after recommendation by the Board of Directors, or by any twelve active members, provided written notice of such proposed amendments shall have been given to all active voting members at least ten days prior to the meeting.

Section 2: No amendments or additions to these by-laws shall be made which are not in conformity with the organization's Constitution.

## ARTICLE XII – APPROVED STUDY GROUPS

Section 1: Application for approved status. Any three or more members in good standing may makewritten application to this organization for recognition as an approved study group. Such application shall be reviewed by the Study Group

continued on page 16



## Stems Without Thorns

As the world's largest supplier of old & new china, crystal, silver and collectibles, Replacements, Ltd. has more than 700 different patterns of Cambridge crystal.

And however much we enjoy selling pieces that were once thought irreplaceable, we love buying them as well. Thanks to people like you, our crystal inventory currently numbers in the hundreds of thousands, and the numbers keep growing every year.

So, if you've been unsuccessfully searching for that elusive piece of Cambridge — or any other type of fine crystal — call us for a free list of pieces available in your pattern. And, if you're looking to sell pieces you currently have, we can help you there, too.

**REPLACEMENTS, LTD.**  
China, Crystal & Silver • Old & New

**1-800-REPLACE**  
**(1-800-737-5223)**

1089 Knox Road,  
PO Box 26029, Dept. CB,  
Greensboro, NC 27420  
[www.replacements.com](http://www.replacements.com)

## WE CLEAN CLOUDY GLASS! SATISFACTION GUARANTEED

Yes, *it is true* that we can really restore the interior of your cruet, vase, decanter and other internally etched items back to near original condition.

*We do not oil, wax or cover up the sickness in any way!*  
We actually remove it.

*No items are too sick to clean!* If we cannot clean an item to meet your satisfaction, the cleaning is FREE!

*Send no money up front.* When we return your item a bill will be enclosed for the cleaning and postage. If you are not fully satisfied, only the return postage is requested.

Most items clean in 7-8 weeks. All glass is handled and cleaned at your risk. Some very cloudy items may take several additional weeks.

Cocktail Shaker	\$35 - \$40	Salt Shaker (1)	\$25
Cologne Bottle	\$30	Salt Shaker (pr)	\$45
Cruet	\$30	Vase (under 10")	\$30 - \$35
Decanter	\$35 - \$45	Vinegar & Oil	\$30
Lavender Jar	\$25 - \$35	Water Bottle	\$35 - \$40

**Ship to:** **Kim Carlisle & Associates**  
**28220 Lamong Road, Dept. C**  
**Sheridan, IN 46069**  
**(317) 758-5767**

[kcarlisl@indy.net](mailto:kcarlisl@indy.net)

## NCC By-Laws

from page 15

Advisory Committee and a report shall be made to this organization recommending disposition of the application. The application shall include an initial membership list, designated contact representative of the study group and such other information deemed necessary for the official record.

Section 2: The name of an approved study group shall be, "Cambridge Collectors Study Group Number \_\_\_." Study groups shall also be encouraged to adopt an additional common name of their choice.

Section 3: All members of an approved study group must be members in good standing of this organization and shall have a sincere interest in the study and collecting of Cambridge Glass. ~~Study groups shall be limited to a maximum of twenty members.~~ No additional membership requirements shall be made.

Section 4: Approved study groups are encouraged to hold a minimum of eight study group meetings each year for the purpose of studying Cambridge Glass or closely related subjects.

Section 5: The study group shall submit ~~a written monthly report~~ **reports from time to time** to the Study Group Advisory Committee for the purpose of maintaining the official record of the activities of the study groups. The report shall include any changes in the membership or designated contact representative of the study group, a summary of activities and subjects discussed and other matters specified by the Study Group Advisory Committee.

Section 6: A study group shall have no authority to commit this organization on any matter.

Section 7: Termination of the approved status of a study group shall become effective upon acceptance by the organization of a recommendation of discontinuance made by the Study Group Advisory Committee. Such a recommendation shall be made:

(a) if requested in writing by the members of the study group.

(b) for non-compliance with the rules and regulations of this organization.

(c) due to inactivity for a period exceeding six months.

(d) due to conduct which violates the principles or ethics of this organization, provided that the contact representative shall have been given ten days notice in writing of such pending action, together with a full statement of the reason for the recommendation, and shall have been given an opportunity for a full and fair hearing.

Revised December, 2002

### NOTES

**Sections stricken by amendment are printed with a line running through the deleted text.**

**Sections added by amendment are shown in bold italic print.**



# Cambridge Glass Books by National Cambridge Collectors, Inc.

FOR ORDERING INFORMATION, SEE FOLLOWING PAGE

NCC Members receive a 10% discount on these books

**1910 Near Cut** 14.95

108-page reprint of 1910 catalog  
Paperback with Price Guide

**1930-34 Catalog Reprint** 14.95

250 pages; Paperback with Price Guide

**1930-34 Index (for above)** 2.00

**1949-53 Catalog Reprint** 14.95

300 pages; Paperback with Price Guide

**1956-58 Catalog Reprint** 12.95

160 pages; Paperback (no Price Guide)

**Caprice** 19.95

200 pages; lists colors, decorations, repros, etc.  
Paperback with Price Guide

**Colors in Cambridge Glass** 19.95

128 pages; 60 color plates; fully indexed  
Hard-Cover with Price Guide

**Decorates** 14.95

136 pages; Paperback (no Price Guide)

**Etchings, Volume 1** 14.95

by Miami Valley Study Group  
84 pages; Paperback (no Price Guide)

**Etchings, Non-Catalogued** 12.95

70 pages; Paperback (no Price Guide)

**Etchings: Blossom Time** 7.95

26 pages; Paperback

**Etchings: Candlelight** 7.95

30 pages; Paperback

**Etchings: Chantilly** 7.95

44 pages; Paperback

**Etchings: Diane** 7.95

53 pages; Paperback

**Etchings: Elaine** 9.95

64 pages; Paperback

**Etchings: Portia** 7.95

57 pages; Paperback

**Etchings: Wildflower** 7.95

42 pages; Paperback

**Rock Crystal Engravings** 14.95

94 pages; Paperback (no Price Guide)

**Rosepoint(2000)** 14.95

by Mark Nye; comprehensive guide to Rosepoint  
showing blanks plus history of the line.  
94 pages; Paperback with Price Guide

**Rosepoint Price Guide (2000)** 5.00

(Included with Rosepoint book listed above. This price  
is for the Price Guide if purchased separately)

The following books do not offer discounts

**Charleton Decorations by Michael & Lori Palmer** 29.95

Comprehensive, full-color guide to Charleton  
Hard-Cover (no Price Guide)

**1903 Catalog Reprint** 5.00

by Harold & Judy Bennett  
106 pages; Paperback (no Price Guide)

**1927-29 Catalog Reprint** 9.95

by Bill & Phyllis Smith  
66 pages; Paperback with Price Guide

**1940 Catalog Reprint** 25.00

250 pages; loose pages are 3-hole punched to be  
placed in your binder. No Price Guide

**1940 Catalog Binder** 5.00

with Cambridge logo printed on front

**Stemware** 19.95

by Mark Nye; shows all Cambridge stemware lines  
known at time of publication  
167 pages; Paperback (no Price Guide)

**Welker - Volume I** 10.00

by Lynn & Mary Welker; reprints from a number of  
Cambridge Catalogs  
120 pages; Paperback (no Price Guide)

**Welker - Volume II [color]** 5.95

by Lynn & Mary welker; 15 color plates showing  
choice pieces from their vast collection  
Spiral-bound (no Price Guide)

**Reflections** 5.00

by The Degenhart Paperweight & Glass Museum  
A history of Guernsey County glass production.  
45 pages; Paperback

# Books and Merchandise Available from NCC

## VIDEOS

### "The Crystal Lady" \$15.00

A video copy of an original Cambridge Glass Co. promotional film showing the making of a goblet in the Cambridge factory. 25 minutes, B&W.

### NEW: Grand Opening Video \$15.00

A high-quality video record of the Grand Opening of The National Museum of Cambridge Glass. 25 minutes, Color.

## SALT & PEPPER TOPS

**Salt & Pepper Tops \$6.00 per pair**  
Polycarbon plastic, will fit most Cambridge shakers such as Rosepoint footed and flat-bottom shakers. Also fit Heisey Rose, Saturn, Plantation, Crystolite and some Orchid. Will fit some Anchor Hocking and Candlewick.

*Order 10 or more pairs, pay only \$5 per pair*

## Books by Gene Florence

Very Rare Glassware (3rd Series)	\$24.95
Very Rare Glassware (5th Series)	\$24.95
Very Rare Glassware (6th Series)	\$24.95
Elegant Glassware (8th edition)	\$19.95
Glassware of the 40s-50s-60s (4th edition)	\$19.95
Glassware of the 40s-50s-60s (5th edition)	\$19.95
Sterware (Cordials) 1920s-1960s	\$24.95

## CONVENTION FAVORS

1995 Cranberry Ice Cascade Goblet	\$5.00
1998 Yellow Iridized Cascade Goblet	\$5.00
2000 Carnival Mt. Vernon Juice	\$5.00
2001 Carnival Mt. Vernon Juice	\$5.00
Cambridge Prism Sign, Mint Julep	\$15.00

## CONVENTION BOOKLETS

### Convention Booklets \$5.00/year

- All NCC Conventions 1994 - 2001 •
- Set of all 8 years \$25.00 (you save \$15)

## NEW NCC LOGO PINS

Show your pride in being a Cambridge collector and a member of NCC.

Only \$5.00 includes shipping



## NCC Tote Bags \$10.00

## SCOTTY DOGS

Red Scotty Dog Bookends are still available! \$100.00/pair  
2000 fund raiser for NCC Museum; made in original Cambridge molds by Mosser. Marked NCC 2000.

## Ordering Information

NCC Members get a 10% discount on all the books within the dotted lines on page 17. There are no discounts on any other items.

### SHIPPING & HANDLING RATES:

First item	\$3.00
Each additional item	\$1.00

### SPECIAL SHIPPING:

- Scottie Dogs: \$10/pair for shipping
- Salt/Pepper Tops: \$3 shipping for any size order
- Jadite Tumblers: \$3 each, \$10 for a set of six
- Logo Pins: shipping included in price

### OHIO RESIDENTS:

PLEASE ADD 6.5% SALES TAX

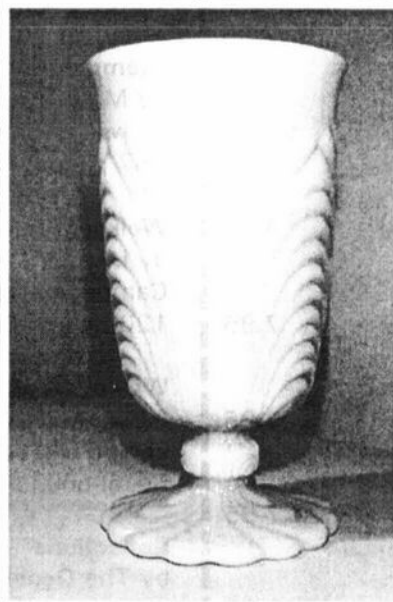
Payments by check or money order only.

Send orders to:

NATIONAL CAMBRIDGE COLLECTORS, INC.  
PO BOX 416  
CAMBRIDGE, OH 43725

*Be sure to include your complete shipping address and phone number. Thanks!*

## Caprice Jadite Tumblers NCC's 2002 Project



A Happenin' Color!  
Cool, Retro Styling!

"Martha would want you to have these!"

\$20 each  
Set of 6 for \$100  
plus shipping charges of  
\$3 each or \$10 for the set of 6

Made for the NCC by Mosser Glass  
Marked on the bottom:  
NCC 2002

# DEALER DIRECTORY

When writing to these dealers, please enclose SASE

**DAUGHERTY'S ANTIQUES**  
Jerry and Shirley

Antiques and Collectibles • Mostly Glass  
[www.daughertys-antiques.com](http://www.daughertys-antiques.com)

Shows & Mail Orders 2515 Cheshire North  
(402) 423-7426 evenings Lincoln NE 68512

**Milbra's Crystal** Buy & Sell  
Replacement and Matching *Specializing in Cambridge, Fostoria, Heisey and others.*

Milbra Long (817) 645 6066  
Emily Seate (817) 294-9837  
PO Box 784  
Cleburne TX 76033

E-mail: [longseat@flash.net](mailto:longseat@flash.net)

**THE GLASS URN**  
456 West Main Street, suite G  
Mesa, AZ 85201 480-833-2702  
480-838-5936

Mail Order Shows Open Shop

CAMBRIDGE, FOSTORIA, HEISEY, etc.

**THE DEGENHART PAPERWEIGHT AND GLASS MUSEUM, INC.**

P.O. Box 186  
Cambridge, OH 43725 0186

Intersection of US 22 & I-77  
Phone 740-432-2626

**THE GLASS CUPBOARD**  
P.O. Box 652  
West End, North Carolina 27376

Marcia Ellis Cambridge Show  
910-673-2884 and Mail Order

**FINDER'S ANTIQUE HOUSE**  
3769 Highway 29 North  
Danville, VA 24540

(434) 836-6782

Cambridge • Heisey • Duncan • Fostoria  
Open Wed - Sat 11:00 to 5:00 (seasonal hours apply)

Monday thru Saturday 10 - 5:30 Sunday 12 - 5:50

**Bogart's Antiques**  
BUY - SELL - APPRAISE - REFINISH  
CANE & REED CHAIRS - CLOCK REPAIR

Jack & Sharon Bogart State Route 40  
740-872-1514 shop 7527 East Pike  
740-826-7439 home Norwich, OH 43767

**YOU CAN ADVERTISE YOUR ANTIQUE SHOP HERE!**

**CRYSTALLINE COLORS**  
Buy, Sell and Appreciate  
Cambridge and other Elegant Glass

**I Love Cambridge**

Lynne R. Franks 216-661-7382  
Ohio & western PA Antique Malls

**CRYSTAL LADY**  
Thurs. - Sat. 11-5  
1817 Vinton St. Omaha, NE 68108  
**Bill, Joann and Marcie Hagerty**  
Shop 402 341-0643 Home 402-391-6730

Specializing in Elegant Glass & Collectibles  
[www.crystalladyantiques.com](http://www.crystalladyantiques.com)

**Storck's Antiques**  
**Rick & Joyce**  
Antiques & Collectibles • Glass & Pottery  
Specializing in Fenton, Imperial & Cambridge  
Shows & Mail Orders • [Storck1@aol.com](mailto:Storck1@aol.com)  
Greenfield, MN 55373 • (763) 477-6415

*Mother Drucker's*  
*Penny Drucker*  
Specializing in Elegant Glassware  
Shows and Mail Order

 P.O. Box 50261 Phone: 949-551-5529  
Irvine, CA 92619 888-MDRUCKER  
Website: <http://motherdruckers.com>

**Deborah Maggard, Antiques**  
Specializing in Cambridge Glass,  
American Hand Made Glass & Victorian Art Glass

Please stop and see our extensive collection of  
Cambridge Glass at Riverfront Antique Mall in  
New Philadelphia, Ohio (I-77, exit 81)  
Booths 805 and 812  
You won't be disappointed.

We buy one piece or entire collections.  
Please contact me at 440-247-5632  
and leave a message, or e-mail at  
[debmaggard@worldnet.att.net](mailto:debmaggard@worldnet.att.net)

P.O. Box 211  
Chagrin Falls, OH 44022

**JUDY'S ANTIQUES**  
Judy Bennett  
422 S. Ninth Street (corner of Jefferson)  
Cambridge, Ohio 43725

Business (740) 432-5855  
Residence (740) 432-3045

**CAMBRIDGE GLASS MY SPECIALTY**


**GREEN ACRES FARM**  
2678 Hazelton Etna Rd.  
Pataskala, OH 43062  
(State Route 310 North)

Sat & Sun 1-7 pm 740-927-1882  
Antiques, Crystal Glass & Collectibles

**THE JONES GROUP**  
**Cindy Jones**  
*Buy and Sell Cambridge Glass*

650 Riverside Drive  
Sleepy Hollow, NY 10591

914-631-1656 or E-mail [Caprice0@aol.com](mailto:Caprice0@aol.com)

 **Mary Jane's Antiques**  
Early American Pattern Glass  
Depression Era Items

2653 Burgener Drive 217-422-5453  
Decatur, IL 62521 [mjhumes@aol.com](mailto:mjhumes@aol.com)

**ALADDIN LAMP BOOKS**  
Free List  
Figurine Lamps Wanted  
Bill & Treva Courter

3935 Kelley Rd. Kevil, KY 42053  
Phone 270-488-2116 FAX 2700-488-2055

**GATEWAY ANTIQUE MALL, INC.**  
JUST NW OF MINNEAPOLIS-ST. PAUL, MN  
*Next to Super 8 in Rogers, MN  
(I-94/101 intersection)*

85 Dealers • 7 days; 10 - 6 • 612-428-8286  
ELAINE STORCK, OWNER/DIRECTOR

**ISAACS ANTIQUES**  
(740) 826-4015

See our booths in Penny Court Mall in  
Cambridge and at White Pillars Antique Mall  
(Route 40, one mile west of  
I-70 Norwich, OH • Exit #164)

**PENNY COURT MALL**  
637 Wheeling Avenue  
Cambridge, Ohio

100 Booths 15,000 sq ft

HOURS: Daily 10-6 Sunday Noon-5  
Closed: Easter, Thanksgiving, Christmas

Call for other holiday hours 740-432-4369

**MARGARET LANE ANTIQUES**  
2 E. Main St. New Concord, OH 43762  
Lynn Welker (740) 826-7414

Cambridge Glass Matching Service  
Hours: Mon-Fri 10-12 AM, 1-5 PM  
or by appointment

**DEXTER CITY ANTIQUE MALL**  
P.O. Box 70 Dexter City, Ohio 45727  
(740) 783-5921

Located on Ohio Route 821  
between exits 16 & 25 of I-77  
Just 30 minutes south of Cambridge, OH

## Harrisburg Show

from page 9

with limitless possibilities. Members in parts of the country that are physically distant from Cambridge, Ohio often ask how can they help NCC. Putting together a Cambridge exhibit at a local Antique or Glass Show, is just such an opportunity. These displays work not only to strengthen NCC but are rewarding to those who do them. As with the Elegant Glass Study Group, you will feel the pride of knowing that you are doing your part to help the organization stay healthy, and in some small way repay NCC for all the benefits it has brought into each and every one of our lives.

If you think that there is a show at which you would like to set up an exhibit, contact the local promoter, feel him out, convince him of the benefit to both his show and NCC.

Please feel free to contact me; I will gladly give advice on the nuts and bolts. Lastly, let me say that you will be surprised at how much fun you will have doing one of these displays and how many new friends you will develop. A winning proposition all around.

## Upcoming Glass Shows

### February 8 & 9:

Washburn's San Antonio Show  
Live Oak Civic Center  
Live Oak, TX  
Call (210) 599-0635  
E-mail: washburnk@aol.com

### February 22:

Green River D.G. Show & Sale  
Kent, WA  
Call (253) 852-5250  
E-mail kayswede@msn.com

### February 22 & 23:

Arkansas Glasshoppers  
17th Annual Glass Show & Sale  
Little Rock, Arkansas  
Call (501) 375-0435  
E-mail esthermitchell@msn.com

### March 8 & 9:

Chicagoland D.E. Glass Show & Sale  
Concord Place Midwest Conf. Ctr.  
Northlake, IL  
E-mail: schmidt.tim@attbi.com

### March 22 & 23:

Long Island Depression Glass Society  
Show & Sale  
Freeport, NY  
Call (516) 798-0492

### March 28 & 29:

North Jersey Depression Glass Club  
Glass and Pottery Show & Sale  
320 Franklin Tpke.  
Allendale, NJ  
Call (973) 423-1324  
E-mail: cdrizzo@aol.com

### April 5 & 6:

Lincoln Land DG/Pottery Show & Sale  
Illinois State Fairgrounds  
Springfield, Illinois  
Call (217)546-4790.  
E-mail: lots1@earthlink.net

*If you know about any upcoming glass shows or other glass events, please pass the word on to us at least six to eight weeks before the show dates.*

*These listings are free of charge.*

## MEMBERS ONLY

Visit the "Members Only" section of the NCC's website at

[cambridgeglass.org/NCCmembers](http://cambridgeglass.org/NCCmembers)

Features available only to NCC Members include:

Reprints of Research Articles  
Minutes of Board Meetings

**User name: NCC**  
**Password: TriangleC**

*Membership Renewal Notice:  
If the date above your name is 02-03, this is your last issue, and your NCC Membership has expired.  
Please renew today.*

**NATIONAL CAMBRIDGE COLLECTORS, INC.**  
**P.O. BOX 416**  
**CAMBRIDGE OH 43725-0416**

<http://www.cambridgeglass.org>  
E-mail: NCCcrystalball@aol.com

**FIRST CLASS MAIL**  
**US POSTAGE**  
**PAID**  
**PERMIT No. 3**  
**CUMBERLAND OH 43732**

**FIRST CLASS MAIL**