



# Cambridge Crystal Ball

Published monthly by National Cambridge Collectors, Inc.  
to encourage and report the discovery of the elegant and boundless product of the  
Cambridge Glass Company of Cambridge, Ohio

Issue No. 345

January 2002



**Auction Time is Almost  
Upon Us ...  
The Auction List is Ready**

***Inside This Issue:***

Setting Our Mind to It  
Nominations and Voting  
Convention 2002  
**BENEFIT AUCTION LIST**

**Cambridge Crystal Ball**

Official publication of National Cambridge Collectors Inc., a non-profit corporation with tax exempt status. Published once a month for the benefit of its members. All rights reserved; reproduction in whole or in part without written permission of NCC and the author is prohibited. Membership is available for individual members at \$20.00 per year and an additional \$3.00 for associate members (12 years of age and older, residing in the same household). Of the master member dues, \$14.00 is credited to a one-year subscription to the *Crystal Ball*. All members have voting rights, but only one *Crystal Ball* per household. Multi-year memberships are available: 2 years for \$38.00, 3 years for \$56.00.

**2001-2002 OFFICERS AND COMMITTEE CHAIRPERSONS**

President .....	Richard D. Jones
Vice President .....	Tarzan Deel
Secretary .....	Ken Filippini
Treasurer .....	Charles Upton
Sergeant-at-Arms .....	Michael Neilson
Acquisitions .....	Lynn Welker
Budget & Finance .....	Dennis Snyder
By-Laws .....	Bud Walker
Corresponding Secretary .....	Charles Upton
Endowment .....	George Stamper
Facilities .....	Carl Beynon, Joe Miller
Grants and Fundraising .....	Sharon Miller
Long-Range Planning .....	Mike Strebler
Member Services .....	George Stamper
Membership .....	Jeff Ross
Museum .....	Cindy Arent
Nominating .....	Tarzan Deel
Non-Glass Items .....	Carl Beynon, Bill Hagerty
Program .....	David Ray
Projects .....	Bill Hagerty
Publications .....	Mark A. Nye
Publicity .....	Cynthia A. Arent
Study Group Advisor .....	Ken Filippini
Technology .....	Linda Roberts
WebMaster .....	Linda Roberts
2002 Convention .....	Mark A. Nye
2002 Auction .....	Squeek and Dorothy Rieker, Lynn Welker
2002 Glass Show .....	Mary Beth Hackett, Joy McFadden
2002 Glass Dash .....	Larry and Susan Everett
<i>Crystal Ball</i> Editor .....	Lorraine Weinman
<i>Crystal Ball</i> Circulation Directors .....	Sharon and Joe Miller

Internet website: [www.cambridgeglass.org](http://www.cambridgeglass.org)

WATCH FOR THE OPENING OF THE NEW NATIONAL CAMBRIDGE COLLECTORS MUSEUM ON SOUTH NINTH STREET IN CAMBRIDGE, OHIO.

THE TEMPORARY NCC MUSEUM IS LOCATED ON WHEELING AVENUE IN PENNY COURT MALL IN DOWNTOWN CAMBRIDGE, OHIO.

**NEW ADVERTISING RATES**  
(effective November 1, 2001)

**Display Rates** (camera ready ads preferred)

Unit	Rate
Full Page	\$50.00
3/4 Page	\$40.00
1/2 Page	\$30.00
1/4 Page	\$20.00
1/8 Page	\$15.00

(\$5.00 additional if a photograph is included in display ad)

**Classified Rates**

10 cents a word \$2.00 minimum

Abbreviations and initials count as words. Type sizes cannot be mixed in classified ads. **Payment in full must accompany all ad copy.** Contact Editor for copy assistance.

**Dealer Directory**

Six Line Maximum \$24.00 for 12 month contract  
Also included - Listing on our Internet site at:  
[www.cambridgeglass.org](http://www.cambridgeglass.org)

Cambridge *Crystal Ball* assumes no responsibility for items advertised and will not be responsible for errors in price, description, or other information.

**Advertising copy, letters, articles, must be received by the 5th of preceding month to be considered for publication in the next issue.**

Opinions or information stated in any signed article or letter printed in the *Crystal Ball* are those of the author and may not agree with National Cambridge Collectors, Inc. The Editor reserves the right to refuse and to edit any material submitted for publication to conform to the editorial style of the *Crystal Ball*. Members are encouraged to write to NCC and the *Crystal Ball* sharing their knowledge and questions.

Please address all correspondence (include SASE) to:  
(or E-Mail [NCC\\_CrystalBall@yahoo.com](mailto:NCC_CrystalBall@yahoo.com))

**National Cambridge Collectors, Inc.**  
P.O. Box 416  
Cambridge, OH 43725-0416

President Rick Jones	914-631-1656
Vice President Tarzan Deel	540-869-3949
Secretary Ken Filippini	201-670-0990
Membership	email: <a href="mailto:jaross@cambridgeoh.com">jaross@cambridgeoh.com</a>
NCC Museum: Phone	740-432-4245
Fax	740-439-9223

Please notify us immediately of any address change.

**Tentative  
2001-2002  
Calendar Planning**

**March 1, 2002**  
March Quarterly Meeting  
Pritchard Laughlin Civic Center  
Cambridge, Ohio

**March 2, 2002**  
All Cambridge Glass Auction  
Pritchard Laughlin Civic Center  
Cambridge, Ohio

**June 26-30, 2002**  
2002 National Cambridge Collectors Convention  
Pritchard Laughlin Civic Center  
Cambridge, Ohio

**June 28, 2002 (tentative)**  
NCC Annual Meeting  
Pritchard Laughlin Civic Center  
Cambridge, Ohio

**June 28-29, 2002**  
NCC Glass Show and Sale  
Pritchard Laughlin Civic Center  
Cambridge, Ohio

**June 29, 2002**  
"Glass Dash" ("flea" market)  
Beech Grove Family Development Center  
Cambridge, Ohio

**June 29, 2002**  
Former Workers Reunion  
The National Museum of Cambridge Glass  
Cambridge, Ohio

**August 24, 2002 (tentative)**  
August Quarterly Meeting  
To Be Announced

**Obituary Policy:** (Effective November 1, 2001) Obituary notices of ¼ page or less will be printed free. Larger notices will be billed at the standard display ad rate.

## President's Message



# *Setting Our Mind to It*

It's classic each January to set goals for the coming new year. For an organization like ours, setting goals and sticking to them has been instrumental to our success in a number of areas. But, it's more than goal setting that makes things happen, it's good organization with motivated talent.

We are blessed in this club to have many talented people who have generously committed time, money, and energy to help build a stronger education and preservation organization. The progress that has been made is measurable and has come about by setting our minds to a mission and sticking with it.

From reorganizing our whole financial and reporting structure, to overcoming the effects of a devastating flood in 1998, to securing and furnishing a new museum, to positioning ourselves even better as a national organization united with cordial purpose, to building outreach programs at regional glass shows, to building a meaningful education presence on the Internet and many more areas – we have a lot to be grateful for.

As we move into 2002, we look forward to the grand opening of our new museum facility as the centerpiece of a somewhat restructured annual convention. I hope that as you chart out your year to come, that you'll give serious thought to coming to Cambridge June 26 – 29 to be part of the celebration.

In 1998, we had our largest convention registration ever, as the club celebrated its 25<sup>th</sup> anniversary. Sadly, our spirits were dampened by torrential rains that produced immense flooding, and made a casualty of our Museum plus brought the Convention to a premature and abrupt closing.

What a wonderful recovery we have made, as we regrouped as an organization and received the most wonderful level of support from members, friends, depression glass organizations, and even our local community. What finer way to bring closure to this chapter than by shattering attendance records for the 2002 NCC Convention.

As a national club I often hear from members how difficult it is to come to Cambridge which by necessity and practicality serves as the focal point for our organization. That remains the top challenge for our club ... how to build relevancy and unity of spirit for those persons who cannot visit Cambridge with any frequency to participate

in the fellowship at our annual events like the Auction, Convention, and Quarterly Education meetings.

Over time, I see us videotaping more of these events and making them available on the web so that more out-of-town members can learn from them and feel more a part of the wonderful spirit of NCC. In the meantime, if ever you thought about a trip to NCC's Convention, please think about making it this year.

In addition to the Museum celebration, we will also be marking the 100<sup>th</sup> Anniversary of the Cambridge Glass Company's founding and initial production of fine glassware. We hope to bring together leaders of other glass clubs, community representatives, and government officials to celebrate this important part of the state and nation's cultural heritage.

I take great pride at the chance to be an active member of an important preservation organization. As the head of our Strategic Planning Committee Mike Strebler says – we don't want to envision a time when Cambridge Glass is sold by the pound. We want to build an organization that insures the long-term appreciation of these works of art.

To accomplish this enduring legacy, we need a strong and enduring membership. Each and every one of us is critical to accomplishing this goal. Just as we set our mind to all the other initiatives I mentioned at the beginning of this message, we need to do likewise for membership.

Beyond the finishing of the Museum and planning for our Grand Opening, I see a new membership program as being our most important goal for 2002 and beyond. Like all other critical initiatives, we will have to organize ourselves smartly to seek significant growth in membership levels and support. It is fundamental to the long-term viability of NCC.

If each member could set a goal to find one new member in the coming year or so, we could grow our membership from its present level at 1300 to well over 2000. A lofty goal? Perhaps, but good things happen when we set our mind to it and I hope this article will get you thinking about it and that you'll be there to help as we organize ourselves for this initiative like we have to the others in recent years. We can accomplish a lot when we set our mind to it.

*Well*

# Nominations and Voting A Responsibility of Membership

by Tarzan Deel

As vice president, I chair the Nominating Committee of NCC. Once again it is time for the committee to search out the membership and obtain those willing to run for a seat on the NCC Board of Directors. We try to put a slate together that offers the membership options for the direction of NCC and how we meet our objectives as an organization. Each year, the membership must elect three people to fill seats on the board. This year the terms of Charles Upton, Mike Neilson, and Lorraine Weinman are expiring. We don't believe they all will be seeking reelection so there should be open seats to fill.

Between November 2001 and the March Quarterly Meeting, the Nominating Committee will be searching for those members who will consent to place their names before the membership for consideration for a seat on the NCC Board of Directors. The committee this year consists of Freeman Moore, Ed and Diane Chamberlain, and me (Tarzan Deel). If you are interested in running for the Board or know of someone who would be interested, please let any of us know. This can be done through the NCC P.O. box or by contacting any of us directly or by sending me an email at [zanman123@aol.com](mailto:zanman123@aol.com); be sure to include your telephone number.

Anyone in attendance at the March Quarterly Meeting can nominate a candidate from the floor. The one prerequisite is that the person nominated must agree to the nomination, drafting is not allowed!

This brings us to the second part of this article...voting. Since I have overseen the Nominating and Election process, we have only averaged about 180 submitted ballots out of 1300 members. As you can see, this is not a particularly good ratio. Like citizenship, membership has responsibilities, one of which is to elect fellow members to the Board of Directors. The Board is to implement decisions that are seen in the best interest of the membership and insure the ongoing survival of NCC as a preservation organization in accordance with its constitution and bylaws. This responsibility of the membership determines how we succeed as an organization and how we present ourselves to the rest of the community.

I believe voting is not just a right of membership; it is a responsibility. Your ballot has a list of names of which you may choose three and only three. If more than three names are indicated, the ballot is invalid. If the ballot is copied or duplicated, then the ballot is invalid. We will be

very diligent to make sure the ballots are marked to indicate that the ballot is genuine, and have not been tampered with. Ballots must be in a sealed envelope. If you choose to send it with your convention registration, put the ballot in a separate envelope and then put it in the mailing envelope. **Only sealed ballots will be accepted.**

This is your organization. If you choose not to vote and are not happy with the direction of the organization, I often wonder how you can complain about the decisions reached. So, please make sure you express your opinion by voting. If you want to be represented, you must use your voice, which is your vote. There have been a lot of positive changes and momentum in NCC in the last few years. Be a part of this progress and participate. Volunteer to help in areas you are familiar in; if you have special talents let us know what they are and what you are interested in doing. But above all – **VOTE!**

## IN MEMORIAM

### Ward Teters

Your club member and our dear friend Ward Teters recently passed away. Ward has been a member of NCC and the Cambridge Cordials Study Group for a number of years. He has helped NCC in many ways.

Ward is survived by his wife Marybelle Teters. We extend our deepest condolences to Marybelle and Ward's family and friends in their loss.

Ward will be deeply missed. May it help to know that we share in your loss.

# CONVENTION 2002

## Celebration

### One Hundred Years of Cambridge Glass

by Mark Nye

The celebration continues in 2002. It was 100 years ago this coming May that the Cambridge Glass Company produced its first piece of glass and this year's NCC Convention will honor this milestone. The second reason for our continued celebration will take place in June during Convention: the Grand Opening of the new NCC Museum of Cambridge Glass.

Start making your plans now to attend the 2002 NCC, Inc. Convention. As announced at the November 2001 Quarterly Meeting, the Annual Convention and All-Glass Show will officially conclude on Saturday, instead of Sunday, beginning with the 2002 Convention. Thus the dates for the 2002 Convention are Wednesday, June 26, through Saturday, June 29, with the All-Glass Show running two days only, Friday and Saturday, June 28 and June 29.

Planned for the 2002 Convention are the following activities:

- Fenton Tour
- Dutch Treat Dinner
- Grand Opening - New NCC Museum of Cambridge Glass
- Thursday Night Picnic
- Continental Breakfast - Friday Morning
- All-Glass Show
- Seminars
- Glass Dash
- Bring & Brag
- Glass Identification
- Friday Night Supper
- Annual Meeting
- Annual Banquet
- Cambridge Glass Co. Employee Reunion

Actual convention event scheduling remains tentative and subject to change. Preliminary plans are to have the Museum Grand Opening on Thursday night, preceded by the Picnic. The annual meeting is scheduled to follow the Friday night supper and will be in lieu of the mini-auction which is being eliminated. The Glass Dash, Bring & Brag, and Glass Identification will all be held Saturday as will the annual banquet. Seminars are planned for both Friday and Saturday. At this time, there are no events being planned for Sunday, other than perhaps the Workers Reunion. The Fenton tour and Dutch Treat Dinner, held as pre-convention activities, will take place on Wednesday. More specific information regarding each event will be in the February

issue.

As of this writing, Phyllis Smith is planning on holding another auction featuring glass from the Smith collection on Thursday, June 27. Watch for news about the auction from Phyllis as this is not an NCC sponsored event.

Those of us who have been attending NCC conventions for many years tend to forget what we consider routine is new and unknown to the members planning to attend their first NCC convention. One of the points in question is how the preregistration and registration process takes place.

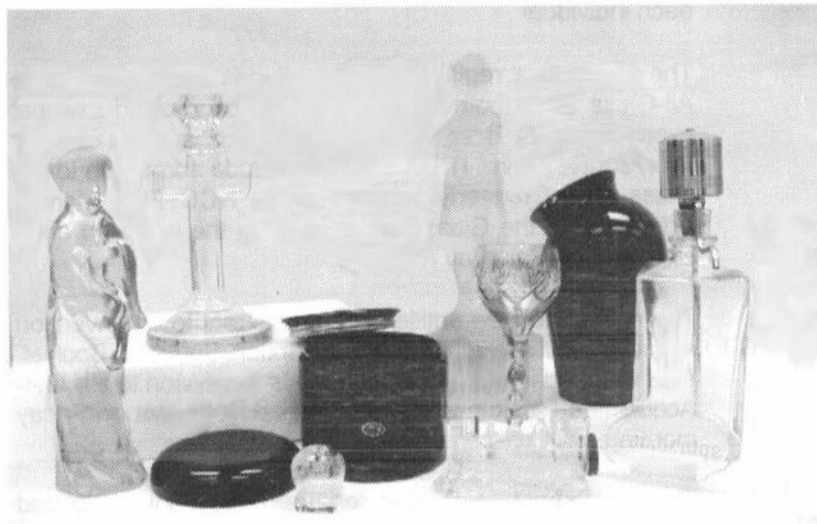
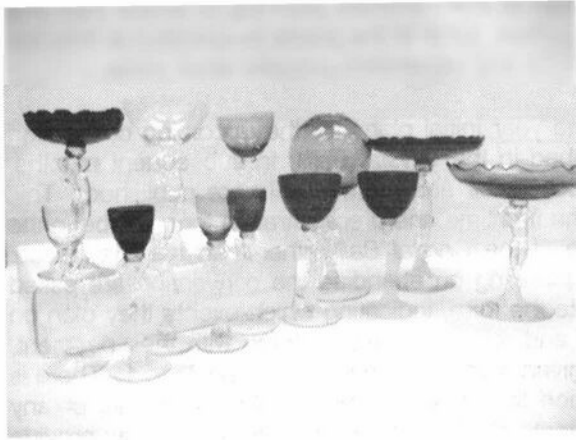
Early in the year initial plans for the upcoming convention are published in the *Crystal Ball*. In subsequent months, tentative schedules and more details are published. This year, for the first time, the preregistration form will be in the April issue of the *Crystal Ball* rather than the May issue. Members planning on attending the convention are asked to complete the form, indicating which events they plan on attending, and return it to NCC, along with their payment, prior to a given date which this year will be June 1. There is no obligation to attend any set number of events or any specific event. Preregistration is done so we may provide our caterer with accurate counts of members and guests attending each meal. The information is also used to prepare name tags, attendee lists, and the packets given to each individual.

The convention registration fee includes admission to the All-Glass Show (both days) and admission to all educational events, Bring & Brag, Glass Identification, and the Former Workers Reunion. IT DOES NOT include admission to the Glass Dash, formerly known as the NCC Flea Market. Admission to the Glass Dash is paid at the time you enter the event on Saturday morning.

The registration fee entitles each registrant to a convention souvenir and a copy of the Convention Souvenir Booklet. Also included in the registration fee is admission to the Get-Acquainted Picnic and the Continental Breakfast on Friday morning.

There are separate charges for the Friday night dinner and the Annual Banquet on Saturday night. There is no charge

(Continued on page 16)



## 2002 NATIONAL CAMBRIDGE COLLECTORS, INC. BENEFIT AUCTION INFORMATION

**AUCTIONEER:** Craig Connelly

**ADMISSION:** \$2.00

**LOCATION:** Pritchard Laughlin Civic Center  
Glenn Highway (U.S. 40 West at I-70)  
Cambridge, Ohio

**DATE:** March 2, 2002

**PREVIEW:** 9:00 a.m.

**AUCTION:** 10:00 a.m.

All glass guaranteed to be Cambridge. The auction committee has checked all glass to be auctioned. All pieces should be examined immediately and returned before five items are sold if the article is not as represented. Any damage is indicated in this catalog. If no color is indicated, the item is Crystal.

**TERMS:** Cash or check with proper identification day of sale. All sales are subject to 6 1/2% Ohio sales tax. Dealers may sign an exemption form if the items purchased are for resale. In which case, no tax will be charged.

**CATALOG INSTRUCTIONS:** The number in parenthesis ( ) at the end of each listing indicates the amount of items to be sold. Bidding will be by the piece if a number occurs at the end or as a lot if pair, set or lot is indicated. You may buy any number of an item if a number appears at the end of an item description. Colors refers to *Colors in Cambridge* by NCC for reference. An asterisk (\*) and bold print indicate a donated item with all proceeds to go to the Museum.

**MAIL BIDS:** All bids must be accompanied by a check for **each** lot. Bids will be executed secretly, and the bidder will pay only the final auction price. Please include a stamped, self-addressed envelope with bids. You will be notified if you are not the successful bidder, and your check(s) will be returned and the final selling price will be noted. Ohio residents, please include 6 1/2% Ohio sales tax or your vendor's number. If you wish to have the pieces shipped to you, please include a **separate** check for adequate postage. You may send one (1) blank check (for shipping only) if you are bidding on many lots. All pieces will be shipped via UPS the week immediately following the auction. Please include your UPS delivery address (not a P.O. box). All items will be carefully checked again before they are shipped. Refund checks for bid overages will be returned immediately. If you wish any additional information, phone 740-453-6403 or 614-777-8064.

**Bids must be received by March 1, 2002, to be eligible.** Mail bids to: Lynn Welker, 2 East Main, New Concord, Ohio 43762. **Make checks payable to: National Cambridge Collectors, Inc.**

**MOTEL RESERVATIONS:** Phone the Cambridge/Guernsey County Visitors & Convention Bureau at 1-800-933-5480 for a listing of motels. Food will be available on the premises the day of the auction.

**QUARTERLY MEETING:** Friday, March 1, 2002, at 7:30 p.m. An informative meeting and preview of the auction glass will be presented. Bring a friend and your Show & Tell glass to the meeting.

Additional auction catalogs are \$1.00 postpaid or included with your admission.

1	*	<b>#119 Ebony 7" Handled Basket, signed</b>
2		#134 Crystal "#731 Rosalie Etch" Cream & Sugar
3		#581 Amber Puff Box and Cover
4		#1536 Crystal 5" Peg Nappies for Cambridge Arms (4)
5		#4 Azurite 8" Bowl w/ Irridized Band & Gold "Seaweed" Decoration (wear to gold)
6		Crystal Martha 2-Lite Candlesticks on Sterling Silver Bases (pair)
7		#865 Lt. Emerald "Cleo Etch" Decagon Saucers, signed (3)
8		#145 Amethyst 7 oz. Marmalade w/ Metal Cover
9		#107 Lt. Emerald "Waterlily Etch" 76 oz. Jug and Cover
10		#1309 Crown Tuscan 5" Globe Vase
11		#3400/60 Crystal "Diane Etch" 6" Bread & Butter Plates (7)
12		#2 Moonlight Blue 4" Star Candleholders (pair)
13		#47 Carmen "Martha Washington" 7 oz. Fruit Salads (6)
14		#1402/52 Crystal "Catawba Etch" Tally-Ho Ice Bucket
15		#3776 Crystal "RCE Maryland" Tall Sherbet
16		Dark Amber "Jenny Lind" Footed Rose Bowl, Hard To Find
17	*	<b>#3575 Crystal Stradivari/Regency 7 oz. Low Sherbet</b>
18		#3000 Lt. Emerald "Needle Etch D1" 3 oz. Footed Tumbler dec. w/ Gold
19		#301 Helio Blown Bitters Bottle Vase (rim chip)
20		Mt. Vernon Original Paper Easel Display Sign
21		#3105 Crystal Pressed Rosepoint 4-1/2 oz. Wine
22		#3105 Forest Green Pressed Rosepoint 4-1/2 oz. Wine
23		#3105 Carmen Pressed Rosepoint 4-1/2 oz. Wine
24		#1402/77 Amber Tally-Ho 13" Footed Punch Bowl
25		Royal Blue Individual Salt in Sterling Holder w/ Sterling Spoon and Sterling Shaker
26		Small Ivory Basket w/ Scalloped Top and Rope Handle
27	*	<b>#3110 Peach-Blo Saucer Champagne w/ Crystal Twist Stem &amp; Foot</b>
28		#319 Moonlight Blue 9 oz. Georgian Tumblers (2)
29		#3011 Crystal Nude Flared Comport
30		#3011/13 Forest Green 1 oz. Nude Brandy
31		#3011 Amethyst Nude Cupped Comport
32		#3011/13 Gold Krystol 1 oz. Nude Brandies w/ Optic Bowls (2)
33		#3011/9 Smoke 3 oz. Nude Cocktail
34		#1138 Crystal Seagull 8-1/2" Figure Flower Holder
35		SS#21 Crown Tuscan Seashell 6" Footed Candy Box & Cover w/ Gold Decoration
36		#856 Peach-Blo "#733 Etch" Decagon 11" Flip Bowl, signed
37		#3106 Crystal "Silk Screen Appleblossom" 10 oz. Goblet
38		Rubina Honeycomb 6" Candy Bottom, Excellent Color
39		#1380 Crystal 26 oz. Square Decanter Etched "Gin" w/ Ball Stopper
40		#870 Ebony Decagon 11" Center-Handled Sandwich Tray
41		#1602 Crystal Crucifix 9" Candlestick, Satin Finish Highlights, Rare
42		#3085 Pink "Hunt Scene Etch" Finger Bowl, no underplate
43		Opaque Yardley Jar w/ Original Glass Matching Lid
44		#1715 Crystal Ashtray/Candlesticks (pair)
45		#310 Mandarin Gold 3-1/2" Vase
46		#1406 Carmen 6 oz. Old-Fashion Cocktails (6), signed (base chips on 2)
47		#1 Crystal 4-1/2" Twist Muddlers (6)
48		#3121/1 Amber 5-3/8" Blown Comport w/ Crystal Stem & Foot
49		#993 Crystal "Hanging Garden Basket, #779 Etch" 12-1/2" 4-Footed Bowl, Unusual Etching
50		#3500/69 Emerald Green 6-1/2" 3-Part Relish on Farber Chrome Base
51		#1936 Crystal Pristine Low Sherbets, D/1050 Gold Encrusted Laurel, Cambridge labels (4)
52		#1399 Crystal "Wildflower Etch" 11" Salad Bowl (has some scratches)
53		#647 Crystal "Wildflower Etch" 6" 2-Lite Candlesticks (pair), (foot repair on 1)
54		#23 Amber Plainware Covered Syrup & Underplate
55		#274 Lt. Emerald 10" Aero-Optic Bud Vase, Unusual
56	*	<b>SS#31 Dark Emerald Seashell 8" 4-Footed Oval Dish</b>
57	*	<b>SS#31 Mandarin Gold Seashell 8" 4-Footed Oval Dish</b>



58	_____	#327 Crystal Martha "Blossomtime Etch" 7" 2-Handled Plate w/ Gold Stippled Edge
59	_____	Small Amber Frog
60	_____	#27 Crystal "Everglade" Cream & Sugar
61	_____	Special Article #96 Jade 10" Half-Pound Candy Jar w/ Cover (chip inside lid)
62	_____	#163 Crystal 8-1/2" Asparagus Plate
63	_____	Cambridge Crystal Doorknobs w/ Original Nickle-Plated Brass Doorplates (pair)
64	_____	#119 Pink "#518 Tulip Etch" 83 oz. Jug w/ Ice Lip, signed & (4) Matching #1630 12 oz. Tumblers
65	_____	#3700 Crystal "RCE King Edward" 6 oz. Tall Sherbets (3)
66	_____	#4 Avocado Plainware Footed Cream & Sugar
67	_____	#1124 Crystal Pouter Pigeon Bookend
68	_____	#1401 Late Dark Emerald "Jefferson" 3-1/2 oz. Cocktails (8)
69	_____	#1025 Ebony "#729 Etch" 6" 2-Piece Cigar Humidor w/Satin Finish Inside (top lid missing, inner lid chip)
70	_____	#130 Crystal NearCut 4 oz. Toy Candy Mug
71	_____	#140 Crystal NearCut 4 oz. Toy Candy Mug
72	_____	Crystal NearCut "Chelsea" 6" Violet Vase w/ Engraving (slight color tint)
73	_____	#2653 Crystal NearCut "Ribbon" 2-Handled Cracker Jar w/ Cover, signed (bruises on lid)
74	_____	#2651 Crystal NearCut "Inverted Feather" 1-Pint Milk Pitcher, signed
75	_____	#2699 Crystal NearCut "Buzz Saw" 2 oz. Handled Cologne w/ Stopper, signed (chip on stopper)
76	_____	#2631 Crystal NearCut "Marjorie" Punch Bowl & (12) Matching Punch Cups, all cups signed
77	_____	#189 Blue II Perfume w/ Original Stopper, Complete Dauber
78	_____	#1040 Lt. Emerald 3" Swan, Style I, signed
79	_____	#1040 Crown Tuscan 3" Swan, Style III
80	_____	#1043 Lt. Emerald 8-1/2" Swan, Style I, signed (large chip on 1 wing)
81	_____	#3400/132 Royal Blue 9" Vase w/ Side Opening, Unusual
82	_____	#306 Carmen Pristine 6" Candy Box & Cover
83	*	<b>#2899 Crystal 3-1/2" Flower Frog, Patent Dated (normal underbase roughness)</b>
84	_____	#2 Crystal 5-1/2" Rooster Muddlers (4)
85	_____	#168 Ivory 10" Center-Handled Sandwich Tray
86	_____	Windsor Blue Seashell 6" Footed Candy Box & Cover, signed (chip on finial, colors don't match)
87	_____	#3011/13 Amethyst 1 oz. Nude Brandy
88	_____	#3011 Forest Green Nude Ivy Ball
89	_____	#3011 Carmen Nude Cupped Comport
90	_____	#3011/13 Royal Blue 1 oz. Nude Brandy
91	_____	#3011 Smoke Nude Cupped Comport w/ Short Stem
92	_____	#300 Crystal Caprice 7 oz. Tall Sherbets (6)
93	_____	#74 Crystal Caprice 3-Lite Candlestick
94	*	<b>#147 Crystal Caprice 4" 2-Handled Square Bonbon</b>
95	_____	#22 Crystal Caprice 8-1/2" Luncheon Plates (4)
96	_____	#28 Crystal Caprice 14" 4-Footed Torte Plate
97	_____	#93 Crystal Caprice Nut Dishes (2)
98	_____	#16 Crystal Caprice Pressed Finger Bowls (2)
99	_____	#310 Crystal Caprice 12 oz. Ice Tea Tumblers, Cambridge labels (4)
100	_____	#131 Crystal Caprice 8" Low-Footed Plate, Satin Silver 25th Anniversary
101	_____	#300 Crystal Caprice 1 oz. Cordials (6)
102	_____	#66 Crystal Caprice 13" 4-Footed Crimped Bowl
103	_____	#207 Moonlight Blue Caprice 3-1/2" x 2-1/4" Covered Cigarette Box
104	_____	#300 Moonlight Blue Caprice 3 oz. Cocktails (6)
105	_____	#204 Moonlight Blue Caprice 3" x 3" Triangle Cigarette Holder (rough mold seam)
106	_____	#65 Moonlight Blue Caprice Alpine 11" 4-Footed Handled Oval Bowl (off color)
107	_____	#53 Moonlight Blue Caprice 10-1/2" 4-Footed Crimped Bowl
108	_____	#144 Moonlight Blue Caprice 4" 2-Handled Jelly w/ Beaded Bottom
109	_____	#40 Moonlight Blue Caprice Individual Cream & Sugar
110	_____	#32 Moonlight Blue Caprice 11" 4-Footed Cabaret Plate
111	_____	#105 Moonlight Blue Caprice 6" Mayonnaise Bowl
112	_____	#300 Moonlight Blue Caprice 4-1/2 oz. Clarets (4)
113	_____	#120 Moonlight Blue Caprice 6-3/4" 2-Part Relish
114	_____	#67 Moonlight Blue Caprice 2-1/2" 1-Lite Candlesticks (pair)

115	_____	#26 Moonlight Blue Caprice 11-1/2" 3-Footed Cake Plate (scratched in center)
116	_____	#3400/1176 Forest Green "Apple Blossom Etch" 8" Square Salad Plates, signed (4)
117	_____	#1400 Heatherbloom "Early Martha Washington" 3-1/2 oz. Cocktail, Unusual
118	_____	#1128 Crystal Scotty Dog Bookends (pair), (chip on step to both)
119	_____	#88 Amber 1 lb. Footed Candy & Cover, Wide Optic, Wide Gold Etched Decor (slight trim wear)
120	_____	#63 Tahoe Blue "Mt. Vernon" 3-1/2" Ashtray, Unusual
121	_____	#3500 Crystal "RCE Croesus" 1 oz. Cordial (chip on rim)
122	_____	#3797 Crystal "Cambridge Square" 1 oz. Cordial, Cambridge label & "Patent Pending" label
123	_____	#3103 Carmen 1 oz. Cordial
124	_____	#7966 Crystal 1 oz. Cordial w/ Forest Green Foot
125	_____	#7966 Crystal "Rondo" 1 oz. Low Cordials (2)
126	_____	#7966 Crystal 1 oz. Cordial w/ Royal Blue Foot & Unknown Cut
127	_____	#3109 or #7858 "Grape Etching" Pousse-Cafe w/ Etched Plate (possible repair to foot)
128	_____	#3130 Moonlight Blue 1 oz. Cordial
129	_____	#3077 Mulberry 1 oz. Cordial
130	_____	#3500 Amber 1 oz. Cordial
131	_____	<b>#3500/74 Crystal "Rosepoint Etch" Ram's Head 4" Candlesticks (pair)</b>
132	_____	#3400/92 Royal Blue 32 oz. Ball Decanter w/ Mismatched Cambridge #3400 Stopper
133	_____	#1300 Crown Tuscan "Diane Etch" 8" Footed Vase, Crown Tuscan signature
134	_____	#1675 Crystal 8" 3-Part Relish Dish w/ Eagle Handle
135	_____	#1402/100 Tally-Ho Claret, Lavender & Blue Flashed, Cut, Rare
136	_____	#3400/100 Crystal 76 oz. Jug w/ Large Silver Flowers Overlay
137	_____	#3130 Crystal "Apple Blossom Etch" 7 oz. Low Sherbets (6), (nick on 1 rim)
138	_____	#1620 Crown Tuscan "Rosepoint Etch" 11-1/2" Vase, Mint Gold Encrusted
139	_____	#1070 Amber 36 oz. Pinch Decanter & (6) Matching 2 oz. Whiskies (wrong stopper & stopper has flaw)
140	_____	#3075 Peach-Blo "Hunt Scene Etch" 12 oz. Narrow-Optic Tumbler, Gold Encrusted (line at base)
141	_____	#3075 Lt. Emerald "Hunt Scene Etch" 12 oz. Footed Tumbler, Gold Encrusted (small chip under base)
142	_____	#3500/64 Crown Tuscan "Diane & Chintz #1 Etches" 10" 4-Toed 3-Part Celery & Relish, Gold Encrusted, signed & Crown Tuscan signature (gold badly worn around rim)
143	_____	#1402/3 Forest Green Tally-Ho 18 oz. Goblets (4)
144	_____	#513 Frosted 13" Draped Lady Figure Flower Holder on Early Scalloped Base (large crack in base)
145	_____	#1401 Smoke "Jefferson" 6 oz. Tall Sherbet, Rare
146	_____	Primrose 10" Across High-Stem Comport, Gold Encrusted Greek Key Border
147	_____	#3797/165 Ebon "Cambridge Square" 6-1/2" Candy Box & Cover
148	_____	#1066 "Solid Emerald Green" 7" Ivy Ball, Hard To Find
149	_____	Farber Tall Comport w/ Amber Insert
150	_____	#2844 Crystal Small Engine 1-1/2 oz. #999 Candy Container (original closure w/ large chip inside closure)
151	_____	#3105 Crystal Pressed Rosepoint Footed Juices (4)
152	_____	#3105 Amber Pressed Rosepoint 4-1/2 oz. Wine
153	_____	#3105 Amethyst Pressed Rosepoint 4-1/2 oz. Wine
154	_____	#3105 Royal Blue Pressed Rosepoint 4-1/2 oz. Wine
155	_____	"Cambridge Glass" Peach-Blo Advertising Prism, done in Mint Gold
156	_____	#109 Amber Dolphin 9-1/2" Candlesticks (pair)
157	_____	#1321 Crystal 28 oz. Decanter dec. w/ Large Leaf Cutting (stopper for #1320 cordial decanter, stained)
158	_____	#882 Ebony 4" 3-Piece Tobacco Humidor, Cambridge label (2 chips inside base)
159	_____	#1236 Forest Green 8" Ivy Ball, Crystal Keyhole Stem & Foot (chipped & stained at opening)
160	_____	#277 Ebony "Blossomtime Etch" 9" Footed Vase, Mint Gold Encrusted
161	_____	#3130 Crystal "Apple Blossom Etch" 3 oz. Cocktails (6)
162	_____	Partially Sharpened Wooden Pencil printed w/ "The Cambridge Glass Co., Cambridge Ohio"
163	_____	#3450 Crystal Nautilus 12 oz. Cordial Decanter
164	_____	#1284 Peach-Blo 10" Vase w/ Crystal Foot
165	_____	#1371 Mocha Bridge Hound (chip on 1 ear & on base)
166	_____	#1506/1 Crystal Weave 4" Novelty Basket w/ Gold Trim, signed
167	_____	#7966 Crystal "RCE Wedding Rings" 5 oz. Footed Juice
168	_____	#3790 Crystal "RCE Starlite" 12 oz. Ice Tea, Cambridge label

169	_____	Lt. Emerald Decagon 20-Piece Luncheon Set; #979 Cream & Sugar, #865 Cups & Saucers, and #815 7-1/2" Salad Plates, all signed
170	_____	#14 Ivory 10" Shallow Bowl
171	_____	#1953 Crystal "RCE Old English" 5 oz. Footed Tumbler
172	_____	#1630 Rubina Blown 12 oz. Tumblers w/ Ribbed Optic (2), (typical bubbles)
<b>173</b>	<b>*</b>	<b>Mulberry 9" 14-Panel Bowl, signed (undercolored)</b>
174	_____	#3400/38 Amber 80 oz. Ball Jug & (6) Matching #3400/38 12 oz. Tumblers
175	_____	#3060 Lt. Emerald "#520 Etch" 12 oz. Footed Ice Tea
176	_____	4-Piece Game Set, 10 oz. Footed Tumblers; Heart/Diamond w/ Carmen Foot, Club/Spade w/ Ebony Foot
177	_____	#1119 Crystal Eagle Bookends (pair)
178	_____	#3700 Crystal "RCE King Edward" 5 oz. Footed Juices (3)
179	_____	#3 Moonlight Blue 5" Star Candleholders (pair)
180	_____	#1957 Crystal Sonata "RCE Spring" 14 oz. Footed Ice Tea
181	_____	#979 Willow Blue Decagon Cream & Sugar, signed
182	_____	SS#14 Crown Tuscan Seashell 9" Footed Flared Comport
183	_____	#1957 Crystal Sonata "Maple Leaf Etch" Cocktail, Cambridge label
184	_____	#3110 Crystal Saucer Champagne w/ Peach-Blo Twist Stem & Foot
185	_____	Willow Blue "Cleo Etch" Decagon 5-1/2" Plate, signed
<b>186</b>	<b>*</b>	<b>SS#1 Crown Tuscan Seashell 5" Bread &amp; Butter Plate dec. w/ Charleton Roses (gold &amp; decor are worn)</b>
<b>187</b>	<b>*</b>	<b>SS#31 Crown Tuscan Seashell 8" 4-Footed Oval Dish</b>
188	_____	Mulberry Wide-Optic Footed Lemonade Pitcher w/ Sponge Acid Gold Trim
189	_____	#14 Jade 10" Shallow Bowl
190	_____	#274 Crown Tuscan 10" Footed Bud Vase w/ Charleton Enamel & Gold
191	_____	#3200 Crystal "Cut Wild Rose" 5 oz. Punch Cup
192	_____	#1402/133 Crystal 4-Piece Twin Salad Dressing Set w/ Unknown Cutting (chip on 1 ladle)
193	_____	#3300 Pink Moderne 5 oz. Tall Sherbets, signed (4), (nick on points of 2)
194	_____	Crystal "Chantilly Etch" 10" Cornucopia Vases w/ Ruffled Tops on Sterling Silver Bases (pair)
195	_____	#3400 Amber Cream & Sugar in Farber Chrome Holders on Farber Chrome Tray
196	_____	#1222 Gold Krystol 8" Turkey and Cover, Rare
197	_____	#26 Crystal "Mt. Vernon" 3-1/2 oz. Cocktails (5)
198	_____	#3060 Crystal 5 oz. Low Sherbet w/ D619 Gold Etched Border (wear to gold on foot)
199	_____	#1401 Late Dark Emerald "Jefferson" 10 oz. Goblets (4)
200	_____	#1936 Crystal "Firenze Etch" Pristine 12 oz. Footed Ice Tea
201	_____	#3700 Crystal "RCE Laurel Wreath" 9 oz. Goblet, Cambridge label
202	_____	#3600 Crystal "Chantilly Etch" 7 oz. Tall Sherbets (6)
203	_____	#925 Ebony After-Dinner Cup & Saucer, Gold Handle, signed
204	_____	#1206 Twisted Optic 12 oz. Tumblers (1-Amethyst, 1-Moonlight Blue)
205	_____	Rubina 9" Tall Half-Pound Candy Box & Cover, signed in lid
206	_____	#3500/57 Crown Tuscan "Portia Etch" 8" Candy Cover, Gold Encrusted and Crown Tuscan Charleton 3-Part Candy Bottom, Charleton label (gold wear to both pieces)
207	_____	#1180 Carmen 5-1/2" 2-Handled Bonbon, signed, Cambridge label
208	_____	SS#31 Crystal Seashell 8" 2-Compartment Oval Relish
209	_____	#4000 Carmen Cascade #1 Goblet, Extremely Rare
210	_____	P.101 Crystal 32 oz. Cocktail Shaker w/ Grey & Polished Cuttings (crack in stopper)
211	_____	#3400/116 Crystal 13 oz. Stein w/ Amber Handle, Unusual
212	_____	#157 Crystal Martha Deviled Egg Plate w/ #69 Oyster Sauce Cup
213	_____	Helio 10" Stick Vase w/ Gold Encrusted Band (gold trim wear)
214	_____	#477 Crystal "Diane Etch" 9-1/2" Corn Dish or Pickle Tray
215	_____	#3500/69 Amethyst 6-1/2" 3-Part Relish on Farber Chrome Base, Cambridge label
216	_____	#3400/1180 Willow Blue "Apple Blossom Etch" 5-1/4" 2-Handled Bonbon, signed
217	_____	#38 Crystal "Wedgewood Etch" Tall Comport w/ #37 Etched Wedgewood Lid
218	_____	#1402/78 Crystal "Vichy Etch" Tally-Ho 6 oz. Punch Mug
219	_____	#676 Avocado "#527 Rose Etch" 11-1/2" Flip Bowl, Gold Encrusted
220	_____	#3011/13 Emerald Green 1 oz. Nude Brandy
221	_____	#3011/13 Mocha 1 oz. Nude Brandy

222	_____	#3011/9 Carmen 3 oz. Nude Cocktail
223	_____	#3011 Royal Blue Nude Flared Comport
224	_____	#3011/3 Pink Nude Saucer Champagne, Rare
225	_____	#1341 Amber 1 oz. Cordials (2)
226	_____	#1066 Carmen 1 oz. Cordial
227	_____	#3797 Crystal "Cambridge Square" 1 oz. Cordials (4)
228	_____	#3105 Crystal Pressed Rosepoint 1 oz. Cordial
229	_____	#3795 Crystal "Allegro" 1 oz. Cordial, Cambridge label
230	_____	#1900 Amethyst 1 oz. Cordial Tumbler
231	_____	#3798 Crystal "Cambridge Square" 1 oz. Cordial, Cambridge label
232	_____	#7966 Crystal "RCE Wedding Rings" 1 oz. Low Cordial
233	_____	#3500 Carmen 1 oz. Cordial
234	_____	#3400/1186 Gold Krystol "Portia Etch" 12-1/2" 2-Handled Cake Plate, Gold Encrusted, signed
235	_____	#647 Amber "#757 Etch" Decagon 6" 2-Lite Candlesticks (pair) & Matching #1349 12" Bowl, signed
236	_____	#1 Amberina 4-1/2" Twist Muddler
237	_____	#1 Mulberry 4-1/2" Twist Muddler, Unusual
238	_____	#6004 Crown Tuscan "Rosepoint Etch" 5" Footed Vase, Gold Encrusted
239	_____	#1211 Crystal "Everglade" 6" 2-Lite Candelabrum (pair)
240	_____	#1321 Amber 28 oz. Decanter & (6) #7966 Amber 2 oz. Sherries
241	_____	#3400/54 Experimental Powder Blue Opaque Cup & Saucer, signed, Very Rare
242	_____	#3790 Crystal "RCE Lynbrook" Wines (3)
243	_____	#497 Crystal Martha 7-1/2" Candlesticks w/ Prism (pair)
244	_____	W82 Milkglass "Mt. Vernon" 7 oz. Marmalade & Cover
245	_____	#3085 Amber "Hunt Scene Etch" 9 oz. Narrow-Optic Goblet, Mint Gold Encrusted
246	_____	#3085 Amber "Hunt Scene Etch" 4-1/2 oz. Narrow-Optic Claret, Mint Gold Encrusted, Unusual
247	_____	#3085 Amber "Hunt Scene Etch" 6-1/2 oz. Narrow-Optic Fruit Salad, Mint Gold Encrusted, Unusual
248	_____	#556 Peach-Blo 8" Round Salad Plates, signed (4)
249	_____	#45 Ebony 9-1/2" Comport w/ Beautiful Gold Etched Border & Trim
250	_____	#3035 Forest Green 6 oz. Low Sherbets w/ Crystal Stem & Foot, Cambridge labels (6)
251	_____	#2500 Crystal "Chesterfield" 8" Nappy, Square (ref. 1903 catalog, pg. 3)
252	_____	#387 Lt. Emerald 2-1/2" Ashtray in Brass-Plated Metal "Terrier Dog" Holder, ashtray signed
253	_____	#937 Willow Blue 68 oz. Pitcher w/ Cambridge Floral Cutting
254	_____	#881 Willow Blue 4-1/2" 8 oz. Tumblers w/ Cambridge Floral Cutting (6)
255	_____	#3500/41 Crystal "Elaine Etch" 10" Covered Urn
256	_____	#1066 Amber 5" Oval Cigarette Holder w/ Crystal Ashtray Foot
257	_____	Blue I - 3" Basket, 5-1/2" Tall w/ Rope Handle, Unusual
258	_____	#3400/62 Crystal "Diane Etch" 8-1/2" Plates (5)
259	_____	#1380 Crystal 26 oz. Square Decanter Etched "Scotch" w/ Chrome Pump Top
260	_____	#1402/14 Carmen Tally-Ho Finger Bowls (2)
261	_____	#668 Ivory "Willow Blue Etch" 6-1/2" Plate
262	_____	#306 Crystal 6-1/2" Candy Box & Cover w/ Carmen Rose Knob
263	_____	#1402/77 Crystal Tally-Ho 13" Ftd Punch Bowl & (11) #1402/140 Crystal Tally-Ho Cups with Carmen Handles
264	_____	#749 Willow Blue 6-1/4" Bonbon w/ Decalware Flowers, signed
265	_____	#21 Crown Tuscan "Everglade" 7-1/2" Vase
266	_____	#1040 Gold Krystol 3" Swan, Style II, signed
267	_____	#1040 Ebony 3" Swan, Style II, signed
268	_____	#1040 Peach-Blo 3" Swan, Style I, signed
269	_____	#1045 Crystal 13" Swan Flower Center, signed (rough mold seam on 1 wing)
270	_____	#2658 Crystal NearCut 4 oz. Souvenir Mug dec. w/ Gold Band & White Enamel Dots, signed
271	_____	#2647 Crystal NearCut Creamer & Sugar, signed (pair), (bad manufacturing line in sugar)
272	_____	#2892 Crystal NearCut "Semi-Colonial" Tall Half-Gallon Jug
273	_____	Crystal NearCut "Chelsea" 6" Violet Vase w/ Engraving
274	_____	#2651 Crystal NearCut "Inverted Feather" High-Stem Comport, signed
275	_____	Crystal NearCut "4-Lines" 7" Basket
276	_____	#2651 Crystal NearCut "Inverted Feather" Squat Cracker Jar w/ Cover, signed (minor bruises inside lid)
277	_____	#2588 Crystal NearCut 12" Fruit Bowl, signed

278	_____	#3011/13 Pink 1 oz. Nude Brandy
279	_____	#3011/9 Amethyst 3 oz. Nude Cocktail w/ Frosted Stem & Foot
280	_____	#3011/14 Crystal 1 oz. Nude Cordial w/ Optic Bowl
281	_____	#3011 Carmen Nude Flared Comport
282	_____	#3011/24 Amethyst Nude Mint Dish, Hard To Find
283	_____	#2 Moonlight Blue 4" Star Candleholders, Cambridge label on 1 (pair)
284	_____	#13 Crystal "Stratford" (Early American Mt. Vernon) 1-1/2 Pint Jug, signed
285	_____	#3500/97 Crystal 14" 2-Handled 4-Part Celery & Relish w/ Cambridge Cutting (large chip near 1 handle)
286	_____	Jade Short Stem Atomizer w/ Original Fittings, Rare
287	_____	#3400/28 Amber 7" Comport w/ Crystal Keyhole Stem & Foot
288	_____	#5000 Crystal "Heirloom or Martha Washington" 5 oz. Juices, Cambridge labels (2)
289	_____	#3797/67 Crystal "Cambridge Square" Cupped Candlesticks (pair), (small crack on 1 holder)
290	_____	#1236 Amber 8" Ivy Ball, Crystal Keyhole Stem & Foot (large chip & stained at opening)
291	_____	#3750 Crystal "RCE Minton Wreath" 3 oz. Wines (2)
292	_____	#394 Avocado Round Ice Tub and Tongs
293	_____	#141 Amber "Wetherford" 6-1/2" Covered Candy w/ Composition Engraving #39
294	_____	#163 Amber "Wetherford" 11" Bowl w/ Composition Engraving #39
295	_____	Ivory 6" Candlesticks (pair)
296	_____	#522 Lt. Emerald 10" 2-Bun Geisha Figurine
297	_____	#1299 Crown Tuscan 11" Footed Vase
298	_____	Amber Block Optic Covered Pitcher & (4) Matching 10 oz. Tumblers
299	_____	#6 Azurite 6-1/4" Bowl
300	_____	#340 Mulberry 3-Part Handled Relish
301	_____	#244 Satin 10-1/2" Dinner Plate w/ Decalware Floral Decoration, signed
302	_____	#1402/52 Crystal Tally-Ho Ice Bucket, Beautiful Heavy Rock Crystal Cut
303	_____	#3085 Peach-Blo "Hunt Scene Etch" 2-1/2 oz. Wine w/ Lt. Emerald Foot, Unusual Size
304	_____	#862 Ebony 8-1/2" Center-Handled 4-Compartment Relish, Fine Sterling Overlay Lace Design
305	_____	#2 Forest Green 5-1/2" Rooster Muddler, Rare
306	_____	#20 Amber Plainware Footed Sugar & Creamer (pair)
307	_____	#3400/1 Lt. Emerald "Brettone Etch" 13" Bowl, Unusual
308	_____	Farber 8-1/2" Tall 2-Lite Candelabrum, Amethyst #3500 Candlecup Inserts
309	_____	SS#33 Moonlight Blue Seashell 4" 3-Toed Ashtray
310	_____	#58 Amber "Martha Washington" 6-1/2" Ice Tub and Tongs, Unusual
311	_____	Crystal & Satin Finish "Cambridge" Oval Advertising Sign
312	_____	#3500/79 Crystal 3" Across & 6" Tall Footed Favor Basket
313	_____	#1369 Amber 36 oz. Melon Fluted Decanter
314	_____	#674 Lt. Emerald "Hunt Scene Etch" 13" Round Flared Bowl
315	_____	#23 Mulberry Plainware 5 oz. Covered Syrup (large chip under lid), Rare
316	_____	SS#16 Crown Tuscan Seashell 7" Footed Flared Comport, signed
317	_____	#1402/91 Amber Tally-Ho 8" 2-Handled 3-Part Relish
318	_____	#1523 Open Salt, Cambridge label
319	_____	#3700 Crystal "RCE Manor" 3 oz. Cocktail
320	_____	#3144 Crystal "Virginian" 10 oz. Goblet, Cambridge label
321	_____	#3000 Amber "Waterlily Etch" 5 oz. Footed Tumbler
322	_____	#3085 Pink 9 oz. Narrow-Optic Goblet w/ Lt. Emerald Foot
323	_____	SS#35 Crown Tuscan Seashell 4-1/2" x 3-1/2" Cigarette Box & Cover
324	_____	#498 Crystal "Chantilly Etch" 5 oz. Tumbler
325	_____	Rubina Honeycomb 9" Comport w/ Flat Rim
326	_____	#1630 Pink "#518 Tulip Etch" 12 oz. Tumbler
327	_____	#51 Carmen "Martha Washington" 10 oz. Goblet
328	_____	#3126 Crystal "RCE #651" 9 oz. Goblet
329	_____	#3115 Crystal 5 oz. Tumbler w/ Unknown Cutting
330	_____	#3400/52 Amber 5-1/2" Butter & Cover, signed (extremely minor nicks around outside bottom)
331	_____	#2 Crystal "Martha Washington" 4" Candlesticks (pair) & #4 8-1/2" Bowl with Matching Sterling Decoration
332	_____	#3400/38 Ebony 80 oz. Ball Jug & (4) Matching #3400/38 12 oz. Tumblers

333	_____	#15 Azurite 8-1/4" Shallow Bowl
334	_____	#3797 Crystal "Cambridge Square" Sherbets (9)
335	_____	#56 Amber "Everglade" 13" 3-Toed Sandwich Plate
336	_____	#3060 Crystal "#514 Etch" Low Sherbets, Gold Encrusted (2), (gold trim wear worn)
337	_____	#72 Crystal 6" 2-Lite Candlesticks (pair)
338	_____	#555 Crystal "RCE Maryland" 7-1/2" Salad Plates (6)
339	_____	#33 Windsor Blue 7-1/2" Shell Flower Holder
340	_____	#3500/115 Amber 9-1/2" 2-Handled Footed Bowl, Cupped
341	_____	#3400/175 Crystal Cocktail Shaker w/ #10 Chrome Top, Cambridge label
342	_____	#1300 Crown Tuscan "Rosepoint Etch" 8" Footed Vase, Gold Encrusted
343	_____	Mulberry Honeycomb 8" Covered Comport (gold trim worn)
344	_____	#410 Lt. Emerald "Cleo Etch" Gyro-Optic Fan Vase (some mold roughness)
345	_____	#1070 Royal Blue 36 oz. Pinch Decanter
346	_____	94-1/2 Amber 5.5" x 7.5" Sweet Pea Vase w/ Optic
347	_____	SS#30 Crown Tuscan Seashell 9" 3-Toed 3-Part Relish w/ Charleton Enamel Roses & Gold
348	_____	#13 Helio 11-1/2" Shallow Bowl
349	_____	#105 Dianthus Pink "Stratford" 9" 4-Part Handled Relish w/ Flat Top
350	_____	#47 Primrose Footed Mayonnaise Comport
351	_____	#170 Crystal "Wedgewood Etch" 9 oz. Syrup Pitcher w/ Metal Cover
352	_____	#95 Crystal Caprice 4-Footed Almonds (2)
353	_____	#117 Crystal Caprice 3 oz. Oil
354	_____	#124 Crystal Caprice 8-1/2" 3-Part Celery & Relish
355	_____	#300 Crystal Caprice 4-1/2 oz. Clarets (4)
356	_____	#638 Crystal Caprice 3-Lite Keyhole Candlesticks (pair)
357	_____	#204 Crystal Caprice 3" x 3" Triangular Cigarette Holder
358	_____	#19 Crystal Caprice 5" Crimped Fruit Bowls (2)
359	_____	#54 Crystal Caprice 10-1/2" 4-Footed Belled Bowl
360	_____	#81 Moonlight Blue Caprice 11-1/2" 3-Footed Shallow Bowl
361	_____	#184 Moonlight Blue Caprice 12 oz. Ball Top Tumblers (4)
362	_____	#148 Moonlight Blue Caprice 4-1/2" 2-Handled Oval Bonbon w/ Flat Bottom
363	_____	#33 Moonlight Blue Caprice 14" 4-Footed Cabaret Plate
364	_____	#16 Moonlight Blue Caprice Pressed Finger Bowl & Liner
365	_____	#300 Moonlight Blue Caprice 5 oz. Parfaits (2)
366	_____	#122 Moonlight Blue Caprice 8" 3-Part Relish
367	_____	#647 Moonlight Blue Caprice 2-Lite Keyhole Candlesticks (pair)
368	_____	#216 Moonlight Blue Caprice 5" Ashtray
369	_____	#151 Moonlight Blue Caprice 5" 2-Handled Jelly w/ Beaded Bottom
370	_____	#300 Moonlight Blue Caprice 10 oz. Footed Tumblers (4)
371	_____	#66 Moonlight Blue Caprice 13" 4-Footed Crimped Bowl
372	_____	#129 Moonlight Blue Caprice 6-1/2" 2-Piece Mayonnaise w/ Underplate
373	_____	#3500 Crystal "Rosepoint Etch" 12 oz. Footed Ice Teas (4), (2 have rim chips)
374	_____	#3400/77 Crystal "Rosepoint Etch" Footed Salt & Pepper Shakers (pair), (plastic lids are damaged)
375	_____	#3900/167 Crystal "Rosepoint Etch" 14" Torte Plate (heavily scratched)
376	_____	#1470 Crystal "Rosepoint Etch" Individual Salt (chip on fitter that screws into base)
377	_____	#3121 Crystal "Rosepoint Etch" 2-1/2 oz. Footed Tumbler
378	_____	#3000 Crystal "Rosepoint Etch" 3-1/2 oz. Footed Cocktail
379	_____	#7801 Crystal "Rosepoint Etch" 5 oz. Footed Tumbler
380	_____	#3900/33 Crystal "Rosepoint Etch" 13" 3-Footed Torte Plate (scratched)
381	_____	#3900/19 Crystal "Rosepoint Etch" 2-Piece Footed Mayonnaise Set w/ #3400/11 Underliner
382	_____	#3400/38 Crystal "Rosepoint Etch" 12 oz. Tumbler
383	_____	#3500/57 Crystal "Rosepoint Etch" 8" 3-Part Candy Box & Cover
384	_____	#477 Crystal "Rosepoint Etch" 9-1/2" Corn Dish or Pickle Tray
385	_____	#3900/131 Crystal "Rosepoint Etch" 8" 2-Handled Footed Bonbon Plate
386	_____	#3500 Crystal "Rosepoint Etch" 5 oz. Footed Tumblers (4)
387	_____	#3400/1093 Crystal "Rosepoint Etch" 6" Center-Handled 2-Part Relish
388	_____	#3900/165 Crystal "Rosepoint Etch" Candy Box & Cover

# NATIONAL STUDY GROUP REPORTS



## Study Group #13 The Miami Valley (Ohio) Study Club

December, 2001 Meeting

"A good time was had by all" hardly describes the Miami Valley Study Group December get together! Our December meeting is the annual holiday party and was attended by: Diane and Ernie Gary, Ken and Judy Rhoads, Frank and Vicki Wollenhaupt, David and Sue Rankin, Mac and Georgia Otten, David Ray, Nancy Misel, Ralph and Linda Warne, Alan and Gailyn Sadurski, John and Helen Wilt, Fred Schaefer, George and Bev Stamper, Ron and Norma Hufford, Larry and Susan Everett.

President Larry Everett conducted a short and very casual meeting as we needed to change our January meeting date. There were updates on conversations with Phyllis Smith who is temporarily in nursing care. We were all glad to hear that she continues to improve.

The holiday celebration (a Chantilly celebration) was hosted this year at the home of Ernie and Diane Gary. Upon entering, members were treated to glorious decorations of silver and gold, red and green, exquisite table settings and a wonderful large decorated tree. Besides the decorations we enjoyed seeing Diane's Chantilly collection and Ernie's golf related items which include a wonderful Cambridge glass with a gold decorate golfer!

Entertainment for the evening was a fill-in-the-blank activity based on Christmas carols and Cambridge colors! All participants received a candy cane just for joining in the silliness!

The real entertainment was the spirited gift exchange. Members brought a wrapped gift of Cambridge glass for which they paid less than \$15 and should have a value more than that amount. It is not only amazing to see what our members can find and are willing to give away but also to see the variety of wrappings used for the gifts! There was a rather large (read that as HUGE) round box that captured everyone's curiosity and it changed hands many times during the exchange. When time was up, that particular box revealed a wonderful P.430, 12" Magnolia etched bowl! Very unusual. Other marvelous items in the exchange were: Arcadia three part relish, Emerald #3550/61 Gadroon three part candy dish with crystal handle; two #3130 tall sherbet/champagnes cut with Wedding Rose; Crown Tuscan three inch swan; Amber Decagon center handle plate with Cleo etch; Caprice 2-part relish or candy dish;

Heirloom 7 1/2" 3-part covered candy dish (filled); Near Cut Fernland cruet; Caprice 14" footed plate; 4 #3400/15 Willow Blue 4" comports; Martha two-light candleholder etched Blossom Time.

Also during the evening contributions were made to our second annual 'Cambridge Greetings' fund. Since we see each other at the party and can share good wishes of the season, the fund represents the cost of greeting cards and postage we might send to each other. The money collected will be donated to the endowment fund.

A good time was had by all, and to all a good night!

—respectfully submitted by Miami Valley Study Group

## Study Group #14 The Cambridge Cordials

A Rubina swan punch bowl with Japonica flowers on the wings and a Carmen pillow vase with gold encrusted Gloria were just a couple of the "imaginary gifts" at the Cordials Christmas party on December 13. The annual Christmas gathering was hosted by Lynn and Mary Welker at Mary's home. Larry and Janice Hughes were guests at the meeting with the following members present: Mike and Cindy Arent, Carl and Shirley Beynon, Kathy Chester, Joe and Sharon Miller, Mike and Lisa Neilson, Jeff and Jill Ross, Marybelle Teeters, Lynn Welker, and Mary Welker

After a wonderful meal of many holiday treats a brief business meeting took place and dues were paid. The grand opening of the museum and the workers reunion at the June convention were discussed. The Cordials voted to purchase the artificial food for the display at the museum.

A Christmas game was then played. Prizes were awarded to those who could find the most descriptive words, from the word "Christmas," that could be found in the Cambridge catalogues to describe glass. Mike Neilson won the round. Cindy Arent found the most names for colors, and Janice Hughes found the most words that started with "C."

The highlight of the evening was the imaginary gift exchange. In lieu of exchanging Cambridge glass gifts, which is customary, each member was asked to

*(Continued on page 17)*

**(CONVENTION 2002 —Continued from page 5)**

to attend the annual meeting and you may choose not to attend the Friday supper, eat elsewhere, and come just for the annual meeting.

When conventioners arrive in Cambridge, one of the first stops to be made is to go to the Convention Registration Desk, located in the Pritchard Laughlin Civic Center, and pick up registration packets and souvenirs. The packets contain name tags which serve as your admission ticket to the All-Glass Show, Picnic and Continental Breakfast; the final Convention Schedule, list of convention attendees, and other information. For first-timers, the Convention Desk can also provide information regarding Cambridge and directions to various points in the area. Picking up your packets is the final step in the convention registration process.

As this is being written in early December 2001, I do not have motel rates for June 2002. All of the motels are grouped together, several miles from the Civic Center and thus none offers any advantage of nearness to the convention site. They are located at Exit 178, the intersection of Ohio State Route 209 and Interstate 70. Directions to the Civic Center from the motels will be published in the June issue. Motel telephone numbers follow:

Best Western Cambridge	740-439-3581
Budget Host-Deer Creek	740-432-6391
Travelodge of Cambridge	740-432-7375
Holiday Inn Cambridge	740-432-7313
Days Inn Cambridge	740-432-5691
Amerihost Cambridge	740-439-1505
Comfort Inn Cambridge	740-435-3200

It has always been recommended that NCC members and guests planning on attending the annual convention make motel reservations as soon as plans are finalized. Be sure to identify yourself as attending the NCC Convention when making reservations.

See you in June.

**Membership Benefit**

Another great benefit to your membership is access to a private "members only" website.

Copies of research articles from the back issues of the *Crystal Ball* are now available there. The old back issues were lost in the flood of 1998, but now the research materials contained in them are coming back to be shared with the entire membership.

To access the site, follow this URL:  
<http://www.cambridgeglass.org/NCCMembers>

You will be prompted for an ID and password. These are case sensitive. They will also change periodically, so keep reading your current issues of the *Crystal Ball*. Please do not share the passwords with non-members! The private site is intended to benefit you, and that benefit will be diluted if the ID and password is shared indiscriminately.

ID: NCC                      Pswd: TriangleC

**UPCOMING EVENTS**

- Feb. 2 & 3      South Florida Depression Glass Club 28th Annual Show & Sale  
 Ft. Lauderdale, FL  
 Information: 954-985-1120  
[trainmon@bellsouth.net](mailto:trainmon@bellsouth.net)
  
- Feb. 9 & 10      23rd Annual Show & Sale  
 The Sparkling Clearwater Depression Glass Club  
 Clearwater, FL  
 Information: 727-442-4431  
[scdg.facets.net](http://scdg.facets.net)
  
- Feb. 9 & 10      Washburns San Antonio Show  
 Live Oak Civic Center  
 Live Oak, TX
  
- Feb. 10            14th Annual Classic Glass Show & Sale  
 Classic Glass Collectors of Northeast Ohio  
 Eastlake, Ohio  
 Information: 216-289-8270

Know of any interesting events or shows coming up?  
 Please let us know, and as space allows, we will print information about these events.

**South Florida  
 Depression Glass Club  
 28th Annual Show & Sale**

**February 2 & 3, 2002**

*New Location!*

**War Memorial Auditorium  
 800 N.E. 8th Street  
 Ft. Lauderdale, FL**

**Early Buyers Preview Sat. 9 -10 AM  
 Saturday 10 AM -6 PM  
 Sunday 10 AM -4 PM**

*Regular Admission: \$5.00  
 Preview Admission: \$10.00  
 (50¢ off with this card)*

**Directions:**  
 Rt. 95 N to Sunrise Blvd. East,  
 turn South on US 1 for 2 blocks

**Information:**  
 954-985-1120  
[trainmon@bellsouth.net](mailto:trainmon@bellsouth.net)



**Snack Bar · Door Prizes**





## POSSIBLE DONATIONS

The museum has become a reality thanks to the generosity of our many members who have donated time, talent, and monetary donations. In preparation for our grand opening, we are still seeking naming gifts for the following items:

- Outdoor museum signage (see photo above) - \$3,000 [plaque to be mounted in vestibule]
- Mural of original factory interior for the auditorium/history of glassmaking area - \$1,000 [naming plaque]
- One hallway showcase - \$1,000 [naming plaque]

If you wish to sponsor any of these items, please contact Sharon Miller at 740-685-6513 (mbhs\_sm@omeresanet) or Cindy Arent at 740-439-4582 (tuscan@clover.net). We are anticipating an exciting 100th year of Cambridge Glass!

*(STUDY GROUPS—Continued from page 15)*

imagine a gift to give. Some of the imaginary gifts included a Crown Tuscan 1225 vase with red enamel trim and a Santa face in the center, an Ohio State nude, a Wildflower cream and sugar on nude stems, and a bath tub size Crown Tuscan swan with blue mist decoration. Lots of laughs were heard as each "gift" was opened.

In addition, a monetary donation was given by all Cordials members to purchase glass for the museum. With the monetary donations the Cordials group was able to purchase the following items for the museum: a 3700 Optic cordial, a Light Emerald flip bowl with a Cambridge cutting and mirrored on the back, a Starburst Stradivarius wine, an Elite wine, and a Crown Tuscan pillow vase with gold silk screen decoration D1007/8.

—respectfully submitted by Lisa Neilson

**TO THE RIGHT:** Kathy Chester "holds" her imaginary Christmas gift exchange item. Do you suppose there are matching punch cups?



# ~ GLASS ~ MARKETPLACE

**WANTED:** Crystal, 3500, Gadroon with gold stippling (gold icicle trim) on rim. Clarets, champagnes, and/or wines. No etching. **L. Groban (301) 530-6705.**

**WANTED:** Six #3121 3-½ oz. wines with "Elaine" etching. **Melissa Jaworski, 6140 S. Pine Cove Ct., Brighton, MI 48116. 660-258-2485.**

**Time to Advertise Here!**

**Check our reasonable rates  
on page 2**

## **WE CLEAN CLOUDY GLASS!** **SATISFACTION GUARANTEED**

*Yes, it is true that we really can restore the interior of your cruet, vase, decanter and other internally etched items back to near original condition.*

*We do not oil, wax or cover up the sickness in any way! We actually remove it.*

*No items are too sick to clean! If we cannot clean an item to meet your satisfaction, the cleaning is FREE!*

*Send no money up front. When we return your item a bill will be enclosed for the postage and cleaning. If you are not satisfied, only the return postage is requested.*

*Most items clean in 7-8 weeks. All glass is handled and cleaned at your risk. Some very cloudy items may take several additional weeks.*

Cocktail Shaker	\$35-\$40.00	Salt Shaker (1)	\$25.00
Cologne	\$30.00	Salt Shaker (2)	\$45.00
Cruet	\$30.00	Vases (under 10")	\$30-\$35.00
Decanter	\$35-\$45.00	Vinegar & Oil	\$30.00
Lavendar Jar	\$25-\$35.00	Water Bottle	\$35-\$40.00

Ship to: **Kim Carlisle & Associates**  
28220 Lamong Road, Dept. C  
Sheridan, IN 46069  
(317) 758-5767

kcarlisl@indy.net

2001

## **National Cambridge Collectors, Inc.**



**Presents**



*Blossom Time  
Candlelight  
Chantilly  
Diane  
Elaine  
Portia  
Wildflower*

This series covers seven of the major Cambridge etchings. These booklets are similar in style to the Rose Point book. Each contains an article about the etching, listings of all the known pieces, and illustrations of most items. Economically priced at \$7.95 each (Elaine \$9.95), collectors of these etchings cannot afford to be without a copy. Order your copies now. Value guides not available.

(See page 13)



## **Stems Without Thorns**

As the world's largest supplier of old & new china, crystal, silver and collectibles, Replacements, Ltd. has more than 700 different patterns of Cambridge crystal.

And however much we enjoy selling pieces that were once thought irreplaceable, we love buying them as well. Thanks to people like you, our crystal inventory currently numbers in the hundreds of thousands, and the numbers keep growing every year.

So, if you've been unsuccessfully searching for that elusive piece of Cambridge — or any other type of fine crystal — call us for a free list of pieces available in your pattern. And, if you're looking to sell pieces you currently have, we can help you there, too.

**REPLACEMENTS, LTD.**  
*China, Crystal & Silver • Old & New*

**1-800-REPLACE**  
**(1-800-737-5223)**

1089 Knox Road,  
PO Box 26029, Dept. CB,  
Greensboro, NC 27420  
[www.replacements.com](http://www.replacements.com)

## DEALERS



## DIRECTORY

NOTE: When writing to the dealers listed here, please enclose a SASE!

<p><b>DAUGHERTY'S ANTIQUES</b> Jerry and Shirley</p> <p>Antiques and Collectibles * Mostly Glass</p> <p>Shows &amp; Mail Orders 2515 Cheshire No. 402-423-7426 Evenings Lincoln NE</p>	<p><b>CRYSTALLINE COLORS</b> Buy, Sell and Appreciate Cambridge and Other Elegant Glass <i>I Love Cambridge</i></p> <p>Lynne R. Franks 216-661-7382 Ohio &amp; Western PA Antique Malls</p>	<p><b>THE JONES GROUP</b> Cindy Jones Buy and Sell Cambridge Glass 650 Riverside Drive Sleepy Hollow, NY 10591 914-631-1656 or E-Mail Caprice0@aol.com</p>
<p><b>Milbra's Crystal</b> Replacement and Matching</p> <p>Milbra Long (817) 645-6066 Emily Seate (817) 294-9837 PO Box 784, Cleburne, TX 76033 E-mail: longseat@flash.net</p> <p><b>Buy &amp; Sell</b> Specializing in Cambridge Fostoria Heisey and others</p>	<p><b>Deborah Maggard, Antiques</b></p> <p>Specializing in Cambridge Glass, American Hand Made Glass &amp; Victorian Art Glass</p> <p>Please stop and see our extensive collection of Cambridge Glass at Riverfront Antique Mall in New Philadelphia, Ohio (Exit 81 off I-77) Booths 805 and 812 You won't be disappointed!</p> <p>We buy one piece or entire collections, please contact me at 440-247-5632 &amp; leave a message or email at debmaggard@worldnet.att.net</p> <p>PO Box 211 Chagrin Falls, Ohio 44022</p>	<p><b>Mary Jane's Antiques</b> Mary Jane Humes 2653 Burgener Dr. Decatur, IL 62521 Glass: Cambridge, Fostoria, New Martinsville, Duncan Miller, Imperial and Early Pressed mjhumes@aol.com 217-422-5453</p>
<p><b>THE GLASS URN</b> 456 West Main Street, Suite G Mesa, AZ 85201 480-833-2702 480-838-5936</p> <p>Mail Order Shows Open Shop CAMBRIDGE, FOSTORIA, HEISEY, ETC.</p>	<p><i>Mother Drucker's</i> Penny Drucker Specializing in Elegant Glassware Shows and Mail Order</p> <p>P.O. Box 50261 Phone: 949-551-5529 Irvine, CA 92619 888-MDRUCKER Website: <a href="http://motherdruckers.com">http://motherdruckers.com</a></p>	<p><b>GATEWAY ANTIQUE MALL, INC.</b> JUST NW OF MINNEAPOLIS-ST. PAUL, MN Next to Super 8 in Rogers, MN (I-94/101 Intersection) 85 Dealers 7 Days, 10-6 612-428-6286 ELAINE STORCK, OWNER/DIRECTOR</p>
<p><b>THE DEGENHART PAPERWEIGHT AND GLASS MUSEUM, INC.</b></p> <p>P O Box 186 Cambridge, Ohio 43725-0186 Intersection of US 22 &amp; I 77 Phone 740-432-2626</p>	<p><b>JUDY'S ANTIQUES</b> Judy Bennett 422 S. Ninth Street (Corner of Jefferson) Cambridge, Ohio 43725 Bus. 740-432-5855 Res. 740-432-3045 CAMBRIDGE GLASS MY SPECIALTY</p>	<p><b>JAMESTOWN ANTIQUES</b> 16 E. Washington St., Jamestown, OH 45335 Rosepoint and Cambridge our Specialty</p> <p>Buy (937) 675-6491 Sell Susan and Larry Everett</p>
<p><b>THE GLASS CUPBOARD</b> P.O. Box 652 West End, North Carolina 27376</p> <p>Marcia Ellis Cambridge Show 910-673-2884 and Mail Order</p>	<p><b>GREEN ACRES FARM</b> 2678 Hazelton Etna Rd., Pataskalia, OH 43062 (State Route 310 North) Sat &amp; Sun 1-7 PM 740-927-1882 Antiques, Crystal Glass and Collectibles</p>	<p><b>Horse'n Around Antiques</b> Kelvin and Heather Moore Exit 69 on Interstate 64 Woodlawn, IL 62898 e-mail: hmoore@midwest.net TEL: 618-735-9114 Specializing in Cambridge and other Elegant Glass</p>
<p><b>FINDER'S ANTIQUE HOUSE</b> 3769 Highway 29 North Danville, VA 24540 (804) 836 6782 Cambridge-Heisey-Duncan-Fostoria</p>	<p><b>D &amp; D ANTIQUES</b> Columbus, Ohio</p> <p>Dick Sifko SHOWS ONLY</p>	<p><b>CRYSTAL LADY</b> 1817 Vinton St., Omaha, NE 68108 Bill, Joann, and Marcie Hagerty Bus. 402-341-0643 Res. 402-391-6730 Specializing in Elegant Glass &amp; Collectibles</p>
<p><b>YOU CAN ADVERTISE YOUR ANTIQUE SHOP HERE!</b></p>	<p><b>YOU CAN ADVERTISE YOUR ANTIQUE SHOP HERE!</b></p>	<p><b>PENNY COURT MALL</b> 637 Wheeling Avenue Cambridge, Ohio 100 Booths 15,000 sq ft HOURS: Daily 10-6 Sunday Noon-5 Closed: Easter, Thanksgiving, Christmas Call for Other Holiday Hours 740-432-4369</p>
<p>Mon thru Sat 10-5:30 Sunday 12-5:30</p> <p><b>Bogart's Antiques</b> BUY—SELL—APPRAISE—REFINISH CANE &amp; REED CHAIRS — CLOCK REPAIR</p> <p>Jack &amp; Sharon Bogart St. Rte. 40 740-872-3514 Shop /52 / East Pike 740-826-7439 Home Norwich, Ohio 43767</p>	<p><b>ALADDIN LAMP BOOKS</b> Free List Figurine Lamps Wanted Bill &amp; Treva Courter</p> <p>3935 Kelley Rd. Kevill, KY 42053 Phone 270-488-2116 FAX 270-488-2055</p>	<p><b>MARGARET LANE ANTIQUES</b> 2 E. Main St., New Concord, OH 43762 Lynn Welker 740-826-7414</p> <p>Cambridge Glass Matching Service Hours Mon-Fri 10-12 AM, 1-5 PM or by Appointment</p>
<p><b>ISAACS ANTIQUES</b> (740) 826-4015</p> <p>See our booths in Penny Court Mall in Cambridge and White Pillars Antique Mall at Rt. 40, one mile west of I-70 Norwich Exit #164</p>	<p><b>DEXTER CITY ANTIQUE MALL</b> P. O. Box 70, Dexter City, Ohio 45727 (740) 783-5921</p> <p>Located on Ohio St. Rt. 821 Between Exits 16 &amp; 25 off I-77 Just 30 min. South of Cambridge, Ohio</p>	

Happy New Year



---

National Cambridge Collectors Inc  
PO Box 416  
Cambridge OH 43725-0416

<http://www.cambridgeglass.org>  
e-mail: [NCC\\_CrystalBall@yahoo.com](mailto:NCC_CrystalBall@yahoo.com)

---

FIRST CLASS MAIL  
U.S. POSTAGE  
PAID  
PERMIT NO. 3  
CUMBERLAND, OH 43732

---

**FIRST CLASS MAIL**

---

*Membership Renewal Notice*

**If the date on your address label is 1-2002,  
this is your LAST ISSUE of the Crystal Ball.**  
Please take a moment and renew now. Thank you!

---