

Cambridge Crystal Ball



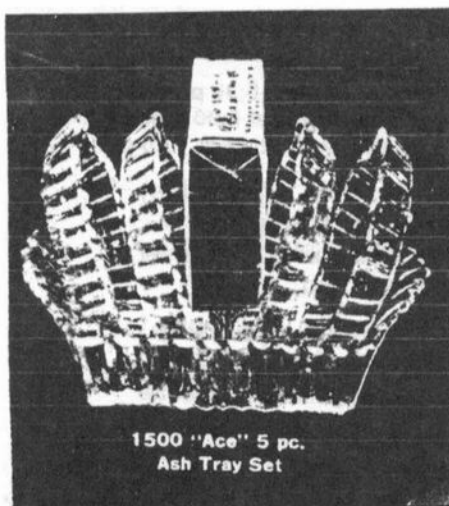
Published monthly by National Cambridge Collectors, Inc.
to encourage and report the discovery of the elegant and boundless product of the
Cambridge Glass Company of Cambridge, Ohio

Issue No. 341

September 2001

Smokers' Items

by Mark Nye



1500 "Ace" 5 pc.
Ash Tray Set

In this article, the third in a series dealing with Circular Letters, the subject is Smokers' Items.

Dated July 22, 1938, the first letter deals with the Pristine 728 five-piece Ash Tray Set.

"To All Agents:

Please refer to Circular Letter #161-1938 concerning the Pristine 728/721 5 pc. Ash Tray or Cigarette Set and take note that our future price will be \$30.00 a dozen list Packed.

This allows the Set to be sold to the large users at \$12.00 a dozen net, which is at the extreme discount.

Concentrate on this item and see if you can't get the customers to use this as a special for the fall and advertise it at a retail price of \$1.95

You will recall this is the one on which we sent you the Peacock Ad. and they have been using so many.

You have the set now in both Crystal and the Varitone as per C/L #14 dated 7/1/38."

Neither of the circular letters referenced in this one have survived. A copy of C/L #5 from July 1, 1938, dealing with the Stackaway set being available in Varitone colors has come down to us and it follows. Probably the "Peacock Ad."

(Continued on page 16)

Inside This Issue:

A Truly National Pastime
New Museum Update
Is It NCC's Best Kept Secret?
November Quarterly Meeting Registration
Cambridge Glass Talk with Wib Orme

President's Message



A Truly National Pastime

Salem Oregon played host to this year's National Depression Glass Association's convention and I was very pleased to attend it this year. It often seems that Club activities are Cambridge-centric (deservedly so since our Museum is there and it is the home of the Glass Company), so it is nice to get out to other parts of the country and meet fellow collectors.

It was a real thrill to see how enthusiastic and positive NCC members are on the West Coast. Cindy and I were greeted very warmly and had an exceptionally good time getting to know new people and renew friendships with collectors who we met at the last NDGA show we went to three years ago in San Antonio.

For those who don't know, the NDGA rotates their show location each year trying to spread their education mission. This year's show and exhibits attracted over 1600 people to Salem. It is the state capital of Oregon and just an hour south of Portland, the major city in the state. Next year's convention will be in Kansas City.

The NDGA program includes an annual meeting on Friday night, ably led by president Kent Washburn and his board of directors. Their board is comprised of regional board members to give a truly national reflection of the organization and most of them made the convention. After the meeting, there is a members-only preview of the glass show which features, I believe, about 36 national dealers.

Oregon was a long way away for many dealers but there were several topnotch sellers who made the trip – including the Solitos from CT, the Stultzes from Virginia, Penny Drucker from Florida, and Lydia and John McNeil from Florida. NCC members Rose and Jim Curnutt and Sandy and Dennis Boone, all from Illinois, also were there with their outstanding booths.

It was very special to see some of the West Coast sellers who we don't get to see very often, if at all, back East. They included club members Penny and Elliott Drucker of California, David and Linda Adams of Las Vegas, and Leegh and Michael Wyse of Washington. (Sorry if I left anyone out!)

The local DG club, Portland's Rain of Glass, worked with NDGA to stage the show. They were awesome ... from the show chair to each committee member. You know the phrase "sweat the details"? Did they ever; this was one of the most buttoned-up shows we'd ever seen. Nicely done!

The highlight of the show was the chance to visit and get to know more of our NCC membership. Every one we talked to was so nice, so enthusiastic, and so positive. It is great to see that West Coast members closely follow club activities, are enthusiastic about our direction and our museum, and cordially and constructively offer ideas. Many of them are already planning to come to Cambridge for our convention and grand opening celebration next June.

I know I'll miss some names but we were pleased to visit with West Coast members Tim and Robin Cook, Swede and Kay Larsson, Melanie and Dennis Hildreth, Ed and Bev Groshens, and Carol White. Jackie Broadstreet of Texas was pleased to buy a pair of Ruby Scottie Dogs. She had planned on ordering them through the *Crystal Ball* and was thrilled to be able to get them on site in Salem.

Jeannie and Freeman Moore from Texas continued their 2001 road show of glass shows by coming to NDGA (they'll be in White Plains this weekend helping at the NCC booth at the Great Northeast Show). RaNae and Dennis Travers were surprised attendees. They ventured from Reno, Nevada, to come to the Portland Expo Extravaganza and were pleasantly surprised to hear that NDGA was in town. They walked away with some real jewels for their Cambridge collection.

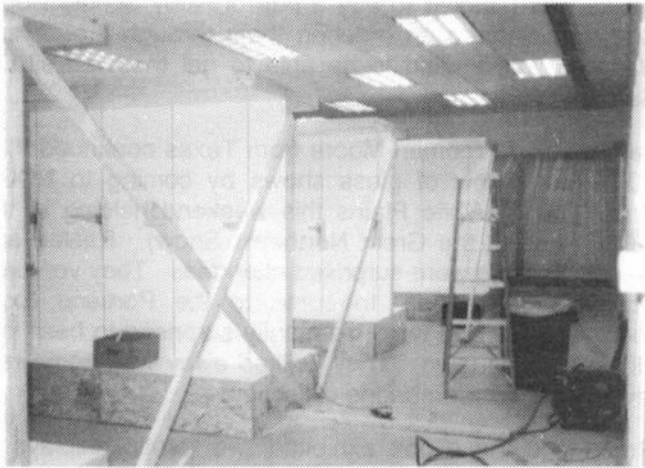
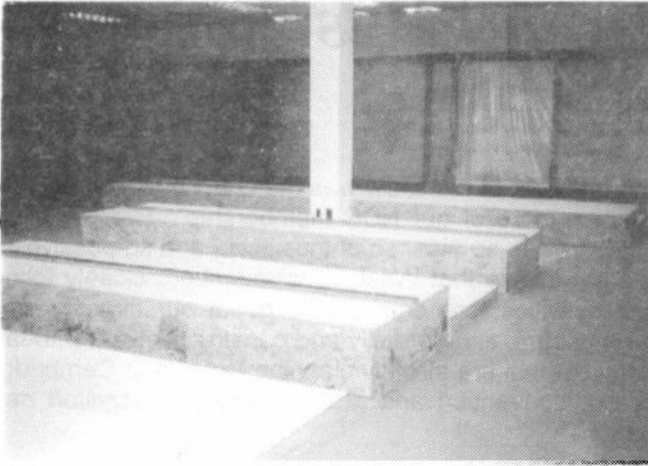
Robin and Tim Cook exhibited two terrific displays of Cambridge Glass. The NDGA had over 30 displays set up ranging from depression to elegant to china and kitchenware. Very educational!

We had a great dinner with Kay and Swede where they proposed an NCC cruise in the Caribbean some time next winter with part of the proceeds going to benefit the Museum. We coined the phrase – a floating study group! Stay tuned as plans are formulated for this.

Speaking of plans, set your dates now to join us in November for our Quarterly Meeting. David Ray and Lynn Welker are organizing a great program on Enamels that you won't want to miss. This is very timely as Mark Nye is working on a new book on Cambridge decorations. What a great time to be an NCC member! And, our thanks to NDGA, and all our NCC friends for showing such wonderful hospitality to Cindy and me.

Bill

Work Continues to Complete Museum



Carl Beynon (on the left) and Charles Upton (on the right) cleaning years of built-up dirt off the floor in the research room.

New Museum Update

by Cindy Arent

The new Museum has been a hub of activity this past month. For those of you that were able to see the progress at Convention, there has been quite a change!

On July 17 our showcase contractor, Dave Edwards, began construction on the center display area. Incidentally, Dave and his wife Mary have become new members of NCC, Inc. Welcome Dave and Mary! Facilities chairman, Carl Beynon, has been at the Museum every day during the construction period from 7 a.m. to 5:30 p.m. We can't thank Carl enough for volunteering so much of his time and effort.

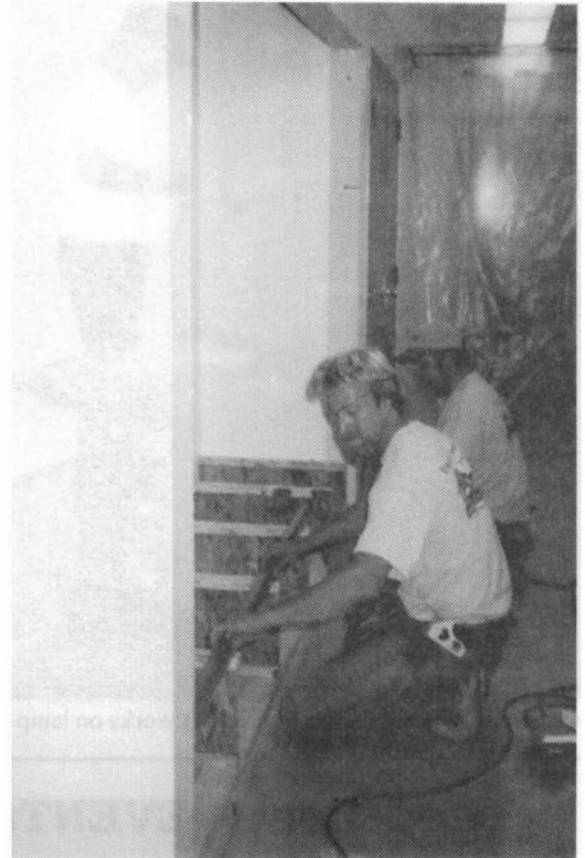
Now that the basic showcase construction is well underway, our attention has turned to finding enough plate glass to be cut for the showcase shelves. We have already used most of the shelving from the previous museum for the wall cases. However, several years ago Bill Smith was able to obtain glass doors and shelving from an antique shop that was closing. I remember the day that local members met Bill, and his son Ed, at the NCC storage building to help unload some of the glass that he was donating to the club. It was secured in the wall of the building for safekeeping and future use. The glass has now been taken out of storage and transported to the shop for cutting. Phyllis Smith has offered to donate the portion of shelving that Bill had taken home that day. At this writing, August 4, the Miami Valley Study Group is in the process of developing a plan to "truck" the glass to Cambridge. We will now have more than enough to complete the shelving in the remaining showcases thanks to Bill's foresight several years ago.

On July 18, a few members of the Design and Display Committee went to the Heisey Museum and met with Cheri Goldner, who is the curator at their museum. Cheri was very helpful and discussed their current inventory system and different methods of accession numbering. She then led us on a tour of their wonderful museum and we gathered many useful ideas. Thank you to Cheri and the staff at the Heisey Museum for their hospitality, and taking the time to meet with us.

Carl Beynon and Charlie Upton have built a book storage and shipping room at the new museum. Charlie was able to move the NCC books for sale, and other club materials that had been stored in his home, to the new location. He is already packing book orders from the new room.

August first was another busy day at the Museum. Along with the contractor's crew and electricians, we had a nice group led by Marge Urbonas, who is a member of NCC and also the 20-30-40 Society, Inc. of Chicago that sponsored the first showcase for the new museum. They were able to view the work in progress throughout the Museum. It was great to meet them and we hope they enjoyed their visit.

Later that day, NCC member Roy Isaacs stopped in to rewire the #2760 Daisy Arched Foot Nearcut lamp and the



Dave Edwards and Joe Endly, of Edwards Construction, work on the built-in case in the hallway.



One of the first "Museum tour" groups — (left to right) Marge Urbonas (20-30-40 Society member), Miriam Krause, Lucille Blair, Lucy Blair, and Eloise Judy.

(Continued on page 6)



Charles Upton watches as Roy Isaacs works on lamp.

(MUSEUM UPDATE—Continued from page 5)

original Caprice display rack. Both items had been submerged in the 1998 museum flood.

This is just a short account of the recent activity and there is still a tremendous amount of work left to do. The new Museum will open in April 2002, with the Grand Opening celebration during Convention 2002. We will also be observing the 100th anniversary of the production of the first piece of glassware (the Big X Pitcher) that was made by The Cambridge Glass Company and became a reality in May 1902. We are very hopeful to be able to locate this piece to be loaned for display at the new Museum during the festivities next year. Convention 2002 will certainly be exciting, so please start planning to attend. You won't want to miss the grand celebration!

September 14-16
Sanlando Depression Era Glass Show & Sale
Sanford Civic Center
401 E Seminole Blvd, Sanford, Florida
Preview Friday 6-9 \$5
Sat. 9-5 & Sun. 10-4 \$3
(a Cambridge Club table will be present)

UPCOMING EVENTS

Sept. 14-16 Sanlando Depression Era Glass Show & Sale
Sanford Civic Center
Sanford, FL

Sept. 22-23 Washburn's San Antonio Show
American Glass, China and Pottery
Live Oak Civic Center
Live Oak (San Antonio), TX
210-599-0635

Sept. 22 Antique American Paperweights Seminar
The Jones Museum of Glass & Ceramics
Sebago, ME

'til Nov. 18 Special Exhibitions on paperweights,
sanded Majolica and porcelain birds
207-787-3370

Oct. 13-14 Atlanta Elegant Glass Show & Sale
Jim R. Miller Park
Marietta, GA
www.dixielandheisey.org

Oct. 13-14 Northeast Marble Meet
Radisson Hotel
Marlborough, MA
617-247-4754

Oct. 27-28 Fall Depression Glass Show & Sale
Freeport Recreational Center
Freeport, LI, NY
516-798-0492

Know of any interesting events or shows coming up?
Please let us know, and as space allows, we will print information about these events.

Atlanta Elegant Glass Show & Sale

featuring

Elegant Glass from such famous makers as Cambridge,
Duncan Miller, Fostoria, Heisey, Imperial, Seneca, & Tiffin

Saturday, October 13, 2001 10:00 AM - 5:00 PM
 Sunday, October 14, 2001 11:00 AM - 3:00 PM

Jim R. Miller Park
 2245 Callaway Road - Marietta, GA 30060
 Exit I-75 at Windy Hill Road. West 6.0 miles to Austell Road. Left
 on Austell Road 4.5 miles to Callaway Road. Right on Callaway
 Road 3.4 miles. Park will be on your right.

Admission \$4.00 (\$3.00 with this Flyer)

22 Dealers from across the country bringing you the finest
 antiques for your table and your home.
 Glass repair will be available.

Special Guests will be Representatives from
 Cambridge and Heisey Collectors.

Sponsored by the Dixieland Heisey Study Club
 Profits benefit the National Heisey Glass Museum, Newark, Ohio

For further information visit our website:
www.dixielandheisey.org

Is It NCC's Best Kept Secret?

by George Stamper

I certainly hope that the NCC Endowment Fund is not a secret. But just in case, I thought that some information about our Endowment Fund was in order.

Our Endowment Fund was established June 30, 1997, with a \$50 donation from Clarke and Carol West. Clarke also placed a donation of \$100 into the fund in memory of Helen Kennon on November 7, 1997.

Bud and Anna Walker donated \$1,000 on November 13, 1997, so that we could get invested into a mutual fund. The Walkers gave another \$75 in December of 1997.

In June of 1997, the book *Etchings By Cambridge, Volume I* was introduced at our convention. All of the proceeds from this publication are donated to the Endowment Fund by the authors, The Miami Valley Study Group, and the publisher Brookville Publishing.

Starting in 1998, Phyllis Smith has held four auctions at convention time in Cambridge. From each of these auctions, she has donated approximately 10% of the sale to the Endowment Fund. "WOW" She believes in the perpetuation of the NCC that she and her late husband Bill have served for so many years.

These accounts of donations are not all that is going on. I have been notified that Bob and Marcia Ellis have included the NCC in their estate planning. I hope to share more about these valued members in the future. If you have included the NCC in your estate planning, please let us know.

Why do we need an Endowment Fund? An Endowment Fund is set up to supply a permanent income. The principal of the fund cannot be used, only the interest that it generates can be used. At present, all of the interest from our Endowment Fund is being added to that account.

At the annual meeting in June 2001, I spoke to the NCC membership. I asked the question, "Where will the NCC be in the year 2101?" I realize that this is a question that is impossible to even speculate on, but if we take care of our more immediate future, who knows how long the heritage of the NCC and the people who produced the Cambridge glass that we collect will last. If you feel that our future is worth preserving, then you should consider

the Endowment Fund.

In June of 1998, the flood struck us and our priorities directed us toward a new home for our Museum. If you have seen the progress we have made on the Museum, I am sure you are just as pleased as I. The Endowment Fund is a way to ensure the future of our Museum.

Any type of contribution can be made to an Endowment Fund, and we can provide you with a statement confirming that you have contributed to a charitable organization.

If you need assistance or have questions about the Endowment Fund, please contact me or one of the members of the Endowment Fund Committee: Bud Walker, Bob and Marcia Ellis, Emil Kleeman, and Dennis Snyder.

Bring & Brag—June 2001



Pictured above is a Mandolin Lady flower frog which is completely silver plated. It is believed to be PeachBlo glass.

"Happiness walks on busy feet."

--Kitte Turmell



Bring & Brag June 2001

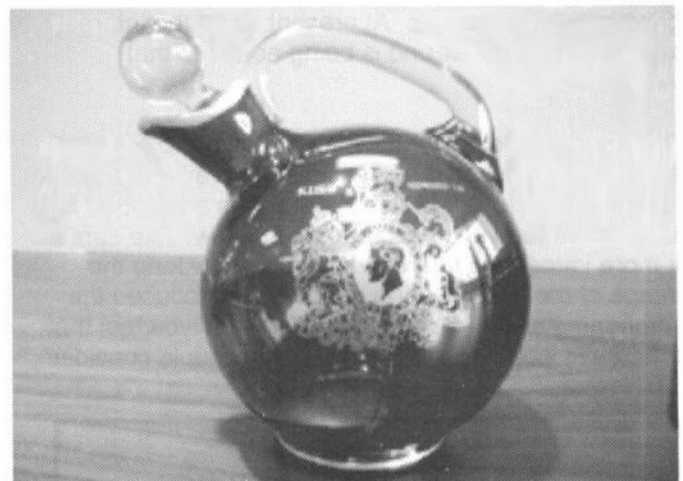
Cambridge Turkey with Charleton decoration. The turkey has a lavender head and raspberry decoration. The Cambridge Turkey can be identified since it is about 9" front to back. If you ball your hand up, you should be able to get your whole fist down in it, which you cannot do in the L. E. Smith turkey. There also is no checkerboard design on the bottom; it is a rocky, pebbly texture. Under the tail feathers there are philodendron leaves behind the wings.



Above piece is pearlized with black enamel. There are different colors of Japanese mums on it. This is a Cambridge decoration.



Above is an Ebony humidor with Rockwell "Parrot" decoration.



Above is a Royal Blue ball jug whiskey decanter with King Edward VIII in gold silk screen and His Majesty's seal on the back.

**FALL
DEPRESSION GLASS
SHOW & SALE**

FREEPORT RECREATIONAL CENTER

130 East Merrick Road, Freeport, LI, NY
SATURDAY, OCTOBER 27, 2001 • 12:00 TO 6:00 PM
SUNDAY, OCTOBER 28, 2001 • 10:00 TO 4:00 PM

Door Prizes
References Books
Unlimited Parking

Grand Prize
 Luncheon Set
 YELLOW PRINCESS

Free Depression Glass
ID & Appraisal
Sunday Only
(Limit 6 Pieces)

DONATION \$5.00 WITH THIS FLYER • 2 FOR \$4.50 EACH

Sponsored By
 The Long Island Depression Glass Society, Ltd.
 For Information Call (516) 798-0492

The Bring & Brag Session and Glass Identification Session are very popular at Convention. Pictured below is a Mardi Gras production shape vase. This is very hard to find. Often such items are seen in these sessions.



THE NON-CATALOGED ETCHINGS

This long-awaited book presents the etchings, found on Cambridge etching plates, that were not illustrated or listed in any of the known Cambridge catalogs, price lists, or advertised in trade journals. Thus, they are being referred to as the "non-cataloged etchings." This does not imply the etchings shown in this book were never put into commercial production. An unknown number probably were, perhaps for a short time and not long enough to appear in a catalog. Many were sample etchings, only put on a few pieces of a single item and never sold commercially. Some of the etchings in this book are familiar as pieces appear from time to time, indicating they were probably commercially produced. Another group of the etchings are familiar since at least one or two examples have been found and displayed in the original NCC Museum or in the Bennett Museum. Many are being seen for the first time and altogether over 230 etchings are illustrated.

See page 13 to order this book. \$12.95 plus S & H.

Bring & Brag—June 2001



This Cambridge Ebony urn vase with Mary Gregory enamel was found at the Bring & Brag session at the 2001 Convention. Lynn Welker stated that it was "made in the early '40s, so it can't really be original Mary Gregory, but whoever did it really knew what they were doing. The handles have been polished off.



We have sold 250 pairs of the Ruby Red Scottie Dogs.

Now if you have not made a purchase of a pair of these Ruby Red Scotties, which I consider a limited edition as only 388 pairs were made, then this is your chance to make a donation to the new Museum and get a pair of beautiful Ruby Red Scottie Dogs at the same time for \$100 plus \$10 shipping.

What a great value!

Thank You for helping with such a worthwhile project!

Bill Hagerty

WON'T YOU HELP?

The Ohio flood of 1998 destroyed the National Cambridge Collectors' Museum. Due to our great loss we are offering the public an opportunity to help by purchasing a special edition of Scottie Dog bookends. These Scotties were made from the original Cambridge Glass mold in a "Ruby" (Red) color, and are clearly marked with the N.C.C. name, date of 2000 and Mosser logo. This color was limited to production during the year 2000 and no more will be made. The cost is \$100 per pair. Shipping charge is \$10 per pair. If you are an Ohio resident, you will be subject to 6 1/2% sales tax (\$6.50 per set).

THANKS!!!!

Order blank

Name: (please print) _____

Address: _____ Phone () - _____
(UPS requires a street address) (Required if you give a P.O. Box)

City: _____ State: _____ Zip Code _____

Check # _____

no. of pair (Ruby)	_____ X \$100.00 = \$ _____	Amount \$ _____
shipping - \$10.00 per pair	_____ X \$10.00 = \$ _____	
sales tax (if Ohio Resident)	\$ _____ (\$6.50 per pair)	
total of order	= \$ _____	Date _____

Make checks payable to: N.C.C., Inc.

Mail to: **National Cambridge Collectors, Inc.**
P. O. Box 416
Cambridge, OH 43725-0416

S. Those of you who are dealers and are buying the above Scotties for resale, and will not be paying the State of Ohio tax, will have to sign a tax exempt form for such and all lines must be filled out completely to be exempt from paying the State of Ohio Sales Tax.

I, the undersigned hereby claims exemption to purchase of tangible personal property from the National Cambridge Collectors, Inc. on and after February 5, 1999 and certifies that this claim is based upon the purchaser's proposed use of the items purchased, the activity of the purchaser, or both as shown hereon: (Exemption Number from Rule #93.

(Purchaser's Name)

(Purchaser's Address)

(Purchaser's Activity)

(By - Signature and Title)

(Date Signed)

(Vendor's License Number)

November Quarterly Meeting

**National Cambridge Collectors, Inc.
NOVEMBER QUARTERLY MEETING**

**Saturday, November 3, 2001
Holiday Inn, Cambridge, Ohio**

**CASH BAR-SOCIAL HOUR at 5:30 p.m.
DINNER BUFFET at 6:00 p.m.
QUARTERLY MEETING at 7:30 p.m.**

**PROGRAM: ENAMEL DECORATIONS
PRESENTED BY LYNN WELKER
Also Show & Tell Table**

Holiday Inn, Route 209, just north of I-70.
Buffet dinner: Sliced sirloin of beef, baked chicken, baked lasagna with meat sauce,
green beans, baked potato, non-alcoholic drinks, and dessert.
\$16.00 per member

**PLEASE MAKE YOUR RESERVATIONS EARLY!
(RESERVATIONS MUST BE RECEIVED BY OCTOBER 29)**

**Send Check to: National Cambridge Collectors, Inc.
P.O. Box 416
Cambridge, Ohio 43725**

NOVEMBER QUARTERLY MEETING REGISTRATION FORM

**Saturday, November 4, 2000
Cambridge Holiday Inn**

Name(s) _____

Number Attending _____

Amount Enclosed _____
(\$16.00 per member)

Mail to:

**National Cambridge Collectors, Inc.
P.O. Box 416
Cambridge, OH 43725-0416**



Cambridge Glass Books Order Form

Mail to: National Cambridge Collectors
 P.O. Box 416
 Cambridge, OH 43725-0416

Your Name _____

Address _____

City, State Zip _____

Phone Number _____

Title	Qty	Price	Item Total

Postage: First Book \$3.00, each add'l book \$1.00 _____

Tax: Ohio residents ONLY, 6.5% _____

GRAND TOTAL _____

REGISTRATION FORM
 ON OTHER SIDE
 FOR THE
 NOVEMBER QUARTERLY MEETING
 AND
 EDUCATIONAL PROGRAM

CAMBRIDGE GLASS BOOKS FOR SALE

By National Cambridge Collectors, Inc.

Colors in Cambridge Glass

128 pages, 60 color plates, full index. Hard-board w/value guide..... 19.95

1910 Near Cut

108-page reprint of original 1910 catalog. PB w/value guide..... 14.95

1930-1934 Cambridge Glass Co. Catalog Reprint

250-page reprint of original catalog. PB w/value guide..... 14.95

1030-1934 Catalog Index. Index to above catalog..... 2.00

1949-1953 Cambridge Glass Co. Catalog Reprint

300-page B&W reprint of original catalog. PB w/ value guide..... 14.95

1956-1958 Cambridge Glass Co. Catalog Reprint

160-page B&W reprint of original catalog. PB, no value guide..... 12.95

Cambridge Caprice

200-page book illustrating one of the most popular lines of Cambridge Glass. Lists color, decorations, reproductions and rare pieces. PB w/value guide..... 19.95

Cambridge Rose Point by Mark Nye

94-page book listing of Rose Point from several sources: catalogs, trade journals, price lists, etching plates, and other surviving company records. One of the most popular lines of The Cambridge Glass Company, showing the many blanks on which Rose Point might be found along with the history and production life of the line. B&W PB w/ 2000 value guide..... 14.95

Etchings by Cambridge, Vol. 1 By the Miami Valley Study Group

84-page book showing samples of plate etchings applied by The Cambridge Glass Company. B&W, PB. Due to the style of publication this book does not have a value guide..... 14.95

Etching Booklet, Blossom Time, B&W, PB, 26 pages..... 7.95

Etching Booklet, Chantilly, B&W, PB, 44 pages..... 7.95

Etching Booklet, Candlelight, B&W, PB, 30 pages..... 7.95

Etching Booklet, Wildflower, B&W, PB, 42 pages..... 7.95

Etching Booklet, Portia, B&W, PB, 57 pages..... 7.95

Etching Booklet, Diane, B&W, PB, 53 pages..... 7.95

Etching Booklet, Elaine, B&W, PB, 64 pages..... 9.95

Non Cataloged Etchings book, B&W, PB, 70 pages..... 12.95

Rock Crystal Engravings book, B&W, PB, 94 pages..... 14.95

Crystal Ball Table of Contents Issue #69, January 1979 thru Issue #320, December 1999..... 2.00

The Home of "Near-Cut" Factory Post Card

B&W picture of The Cambridge Glass Company post card..... 50

Crystal Lady Video

Approximate 25 minute video copy of old Cambridge Glass Co. film showing the making of a goblet in the Cambridge factory..... 15.00

Rose Point Value Guide (Included with Rose Point Book purchase)

Value guide only, includes postage..... 5.00

N. C. C. Members can purchase the above publications at a 10% off

No Discount on the following books

1940 - 1941 Cambridge Glass Co. Catalog Reprint

250-page reprint of original catalog and all well known supplemental pgs. Loose Leaf & Drilled, ready for placement in your own three-ring binder. Due to its size, the reprint does not have a value guide. B&W..... 25.00

Binder for 1940/1941 catalog with logo on front..... 5.00

Cambridge Glass 1927-1929 by Bill and Phyllis Smith. 66-page reprint of original catalog. B&W paper-back with updated value guide..... 7.95

Cambridge Stemware by Mark A. Nye

167 page book showing as many known Cambridge stems known at the time of publication. B&W paperback. No value guide..... 19.95

Cambridge Glass Company by Mary, Lyle and Lynn Welker

120 pages of reprints from eight old catalogs. B&W paperback.

No value guide..... 10.00

Cambridge, Ohio Glass in Color II by Mary, Lyle and Lynn Welker

15 Color plates showing choice pieces from their collection.

Spiral-bound. No value guide..... 5.95

Cambridge Glass Company 1903 by Harold & Judy Bennett

106-page reprint of original catalog. B&W, PB, no value guide..... 5.00

Reflections by the Degenhart Paperweight & Glass Museum

45-page book giving a history of all 18 glass companies in Guernsey

County. B&W paperback with pictures..... 5.00 including postage

OTHER ITEMS FOR SALE FROM THE NATIONAL CAMBRIDGE COLLECTORS

2000 Museum Fund Raising project - Scottie Dog Bookends made in original Cambridge Molds, by Mosser Glass. Made in Ruby (Red) Marked with N.C.C., the 2000 date and Mosser logo.

\$100.00 per pair

Please include \$10.00 per pair - shipping and handling.
Ohio residents include \$6.50, per pair, for Ohio State Sales Tax.

The following Convention Favors are marked with the N.C.C. name & yr.

Convention favors:

1995 Cranberry Ice, Cascade Goblet..... 5.00
1998 Yellow Iridized, Cascade Goblet..... 5.00
2000 Carnival Mt. Vernon Juice Tumbler..... 5.00
2001 Carnival Mt. Vernon Juice Tumbler..... 5.00
Prism with "Cambridge" on one side. Fund raiser, Mint Julep..... 15.00

Donate \$10.00 to the N. C. C. building fund and we will send you a nice, Yellow Canvas Tote Bag with N.C.C. logo on front

Books by Gene Florence

Hard-bound color with value guides

Very Rare Glassware of the Depression Years (Third Series)..... 24.95
Very Rare Glassware of the Depression Years (Fifth Series)..... 24.95
Very Rare Glassware of the Depression Years (Sixth Series)..... 24.95
Elegant Glassware of the Depression Era (Eighth Edition)..... 19.95
Collectible Glassware 40s-50s-60s (Fourth Edition)..... 19.95
Stemware Identification, featuring Cordials, 1920s-1960s..... 24.95
Glass Candlesticks of the Depression Era..... 24.95

Universal Dinnerware and its predecessors, including:

Cambridge Art Pottery
The Guernsey Earthenware Co.
The Oxford Pottery Co.
The Atlas Globe China Co.
All in one beautiful paper-back, color presentation by Timothy J. Smith
176 pages..... 29.95

Past National Cambridge Collectors Convention booklets

1994 thru 2001..... (per year) 5.00
Complete set of 8 years (save \$15.00)(include \$3.00 postage)..... 25.00

Salt & Pepper tops, Polycarbon plastic, will fit most regular sized Cambridge shakers such as Rose Point ftd and flat bottomed shakers. Also fit Heisey Rose, Saturn, Plantation, Crystolite and some Orchid. Fit some Anchor Hocking and Candlewick. Made from the same material used to make taillight lenses for autos. We now have the smaller size to fit the individual Caprice S&P's

Price: 1 to 9 pairs @ \$6 per pair - 10 or more pairs @ \$5 per pair (if ordering only the tops include \$3.00 shipping per order)

The Year In Poetry - by Paul White, 38 pgs PB (including postage) \$7.50
all proceeds go to the Paul White fund to purchase glass for the Museum

Please add postage and handling to your order
(first item, \$3.00; each additional item \$1.00 unless otherwise noted)

Ohio residents add 6 1/2% Ohio State Sales Tax
Only check or money order. NO CASH, NO CHARGE CARDS.

Send payment and orders to:

National Cambridge Collectors, Inc.
P. O. Box 416
Cambridge, Ohio 43725-0416

Cambridge Glass Talk with Wib Orme

by Bud Walker

On Friday, November 11, 1988, while taking my friend Wib Orme (who was A.J. Bennett's grandson) to the hospital for treatment, I asked Wib about glassmaking at the Cambridge factory. Wib told me that all of their glass was made in pots. Most pot furnaces held from five to eight pots that were set on a ledge with the heat underneath.

Wib told me that the pots they used were 20 to 22 inches tall. They were cylindrical with straight sides pulled in at the top. The opening at the top was 14 inches. When a pot was charged they would put in about 60 percent sand and chemicals and 40 percent cullet which would be the same color as the glass they were making. When the batch was made up, the lid would be put on and sealed with clay.

After the melt was completed, they would remove the lid and check the batch for stones or seeds. Wib explained that these were unmelted grains of sand. If they were found in the batch, they would take one-pound bags of arsenic, tie them to a pole, and stir them into the batch. This would aid in the melting of the so-called stones.

I asked Wib about one of the stories that John Braniff, president of our local glass club, was telling as a fact. The story was that when a pot cracked, they would run cold water on it and the molten glass would harden and seal the crack and they could continue using the pot. His reply was this is a lot of bull as the water would cause the pot to explode. Due to the high temperatures, pots would last about four to six months.

According to Wib, there was no way to tell when a pot was going to break, and when it did, the molten glass would run down into a sand bed at the bottom of the furnace. Also, Wib told me what an awful job it was to go down and clean up the molten glass and broken pot pieces. He felt it was one of the toughest and hottest jobs a glassworker would ever have to do.

I learned from Wib that a stemware shop at the Cambridge plant usually consisted of 10 men. The gaffer was the boss and he could hire and fire any member in his shop and no one would question his decisions. Wib told me that a good shop in the plant could turn out 325 pieces in a turn ... 325 pieces in four hours works out to more than one piece of stemware per minute. He explained to me that a turn was four hours.

We also talked about the type of fuel used to melt the glass. Wib told me that while he was working there, gas was the primary fuel, but that they did have an interruptible clause in their gas rate. When the gas was turned off, they would switch over to oil. This caused a lot of problems with the pulsing of the fuel oil pumps. To overcome this problem, the fuel oil tank was located high in the building. The oil would be pumped up into the tank and would feed the furnace glory hole and lehrs by gravity. This eliminated the pulsing and allowed them to continue making the same quality glass as they did with gas.

Wib explained that the lehrs in the plant were about 80 feet long with a continuous chain belt. The belt was kept whitewashed so that it wouldn't leave marks on the ware. It would take two hours for a piece to make the trip from start to finish. By the time a piece finished its trip, it was cooled to the point that it could be picked off the belt for further finishing. He said that there were thermocouples every foot in the lehr so that the temperature was constantly monitored.

I also learned that Ebon was one of the last new colors developed before the plant closed in 1954. Wib claimed that he was the only one who knew the formula for making this new type of glass and that the secret was going to go to the grave with him.

My friend is gone, but I will never forget him and his love of Cambridge Glass. It was through his love of the glass that I was exposed to the beautiful pieces of Cambridge Glass. This glass was made at the factory his grandfather had made into one of the finest glass companies in the United States.

* taken from notes made in 1988

"We often discover what will do, by finding out what will not do; and probably he who never made a mistake never made a discovery."

--Samuel Smiles

LETTERS FROM MEMBERS AND FRIENDS

Attention Editor:

... all the folks who worked so hard to bring our new Museum into reality

As I looked at the Museum on Thursday, June 21, I was just so overwhelmed. It seemed like a miracle that out of the destruction of the flood that something so beautiful could rise like the Phoenix.

I am so thankful to all who worked so hard, who donated, who had any part in the process.

Please convey my thank you to all who worked so hard

Sincerely,
Pam Earussi

P.S. The presentation by the Miami Valley Study Club on the Everglades line was superb. I thoroughly enjoyed seeing the many unusual pieces that were displayed. Each member did a super job.

Hats off to Mark Nye, who, in addition to being chairman for the Convention, presented a wonderful workshop on Nearcut. It helped to solidify the years in which the patterns were made. Thanks to all.

[Editor's Note - An article based on the Everglades presentation will appear in a future issue of the Crystal Ball.]

Letter to the Editor:

We would like to express our THANKS to all of the volunteers who helped out at the book sales table at Convention this year. We were new to this task and so were a lot of you who helped. We received a letter from Charles Upton saying thanks and that he thought we all did a FANTASTIC job. I wanted to share his evaluation with all of you.

George and Bev Stamper

NATIONAL STUDY GROUP REPORTS



Study Group #16 Elegant Glass Collectors

The Elegant Glass Collectors met Saturday, July 28, at Wheaton Village, NJ. Members attending were: Bud and Anna Walker, Pam Earussi, Bill and Yvonne Dufft, Ken and Jane Filippini, and Charles and Loretta Weeks.

We had a beautiful day for the Mid-Summer Antiques Show at Wheaton Village. Several members attended the glassblowing demonstration offered at the Village by resident artists. After previewing the antiques show in their lovely air-conditioned new building, we met in the picnic grove for a lunch and small business meeting. Bill Dufft brought his silver overlay, acid-etch, reed-handled decanter. It was decorated by the DePasse Pearsall Company and the label, most of which is intact, reads Rhodiant. Two milk glass objects, one a child's dish and one a cruet similar to a Near Cut Ribbon pattern, were identified as Westmoreland. The child's covered butter dish was believed to be produced in the '50s, and the cruet earlier. The museum was a treat and Gay Taylor's current exhibition, Silvered/Mercury Glass, was a shiny treat. The Walker collection, and other significant Cambridge pieces are on display in the Museum of American Glass. Two of our members, Bud and Anna Walker, ran a glass identification clinic, along with Gay Taylor. A beautiful Betty (Chrysanthemum) lemonade pitcher and glass were brought to identification. It was a delicate shade of Dianthus Pink and belonged to her grandmother. So, even though we are far from Cambridge by mileage, we are near in love of Cambridge Glass.

We will be present at the Harrisburg Show. We will meet at Extravaganza Weekend, the last Saturday of September, at Charlie and Loretta's house at 1:00 p.m.

—submitted by Pam Earussi

"No pessimist ever discovered the secrets of the stars, or sailed to an uncharted land, or opened a new heaven to the human spirit."
--Helen Keller



(SMOKERS' ITEMS - Continued from page 1)

reference refers to an advertisement placed by a store named "Peacock" in a local paper. If any of our members know of a store, perhaps a local department or jewelry store, with this name, write and let us know.

"To All Agents:

We have decided to put up samples of the Stackaway Ash Tray in the Varitone colors, therefore a sample is being sent you, one each of the trays in Pistachio, Mocha, La Rosa and Moonlight.

We believe you will find a good demand for this set in the lighter colors as well as the dark colors on which we did so well.

Price is the same as for Crystal or dark colors namely:

6 doz. Lots - @ \$7.20 per dozen, Net, Packed.
Less Lots - @ \$7.80 per dozen, Net, Packed."

The subject of a January 8, 1938 letter, #48 for the year, was "Special - Cigarette Set."

"To All Agents:

We call your attention of a Cigarette Set consisting of one of the #616 Cigarette Boxes and four of the #721 Ind. Trays.

This makes a very handsome set and at the price at which we are going to let you offer these to the trade, we believe you should do a nice business on them.

We are going to let you use this during the month of February as a special. The price will be \$9.00 a dozen in 100 lots and in less lots \$9.60 per dozen. Prices NET.

The sample Cigarette Set we are sending you is cut and polished but the sets we supply will be full fire finished. We doubt whether anybody will be able to tell the difference between the cut and the fire finished."

The #721 square-shaped ash tray was already a year old when the previous letter was issued. Its debut had come on January 28, 1937, with this letter.

"To All Agents:

We have made a new Ash Tray which will be known as the Pristine Square Ash Tray #721 fire finished.

The Price will be \$3.75 per dozen, subject to regular discounts.

Add to Pristine price list page 6 as follows:

721 2½ in. Ash Tray Square - Plain \$3.75"

Over two years later, on August 29, 1939, Cambridge introduced a larger version of the #721.

To All Agents:

We are sending you a sample of our new #722 - 3½ inch Square Ash Tray, which is made to match the #721 - 2½ inch, which has been so popular.

We find that quite a nice set can be made up using one of these new Ash Trays with four of the small ones. It will also make a popular priced set, as this new Ash Tray will list at \$7.50. When used with four of the #721's at \$3.75, it will make the set list \$22.50 doz. sets.

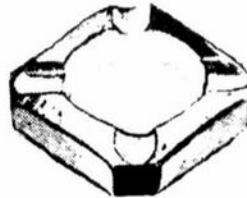
We hope you will be able to send us some nice business on this set."

Unfortunately page 1 of C/L #8 dated July 1, 1938, did not survive. The original typed version of page 2 had as its subject line "Lucky Strike Cigarette Set." On the copy that has come down to us "Lucky Strike" is crossed out and replaced by the handwritten word "ACE." There was no indication at what point in time this change was made. Beginning in August 1939, price lists and catalogs referred to the set as the ACE Cigarette Set. As many probably remember, Lucky Strike was a cigarette brand. It is possible Cambridge had a potential agreement with the manufacturer to use the brand name that did not materialize or was canceled for some reason unknown to us. This set, known by the catalog number 1500, consisted of a glass base or holder and four ashtrays. The base was Crystal and the ashtrays came in one each of the Varitone colors, Mocha, La Rosa, Moonlight, and Pistachio. The ashtrays were known as the 1501 3 in. ashtray. The August 1939 price list offered these sets at \$18.00 per dozen list or if ordering five dozen or more, list price was \$16.50. The only known Cambridge illustration of the set is in the 1940 Cambridge catalog and, along with the holder and ashtrays, there appears to be a pack of cigarettes in the center. Perhaps this was the original tie-in to Lucky Strike cigarettes.

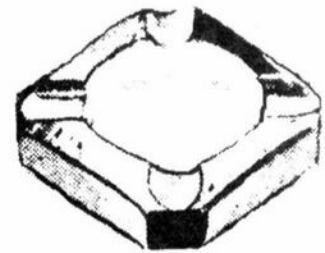
The illustration of the 1500 "Ace" set was taken from the catalog page and is reprinted as it originally appeared. The other illustrations with this article have been taken from their original 1940 catalog pages, reversed and combined into the partial page reprinted here. This is not an original page nor are the items shown to scale.



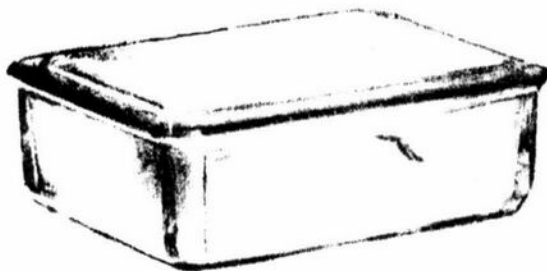
Pristine 728/721
5 pc. Ash Tray Set



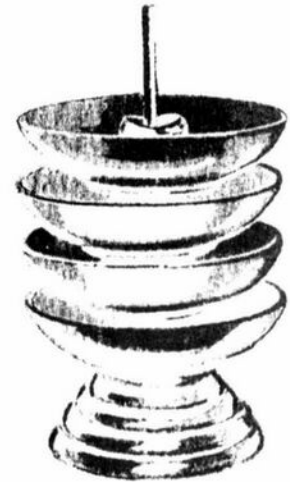
Pristine 721
2½ in. Ash Tray



Pristine 722
3½ in. Ash Tray



Pristine 616
Cigarette Box



Stackaway
Ash Tray Set

~ GLASS ~ MARKETPLACE

WANTED: Crystal, 3500, Gadroon with gold stippling (gold icicle trim) on rim. Clarets, champagnes, and/or wines. No etching. **L. Groban (301) 530-6705.**

WANTED: Six #3121 3-½ oz wines with "Elaine" etching. **Melissa Jaworski, 6140 S. Pine Cove Ct., Brighton, MI 48116. 660-258-2485.**

Time to Advertise Here!

**Check our reasonable rates
on page 2**

WE CLEAN CLOUDY GLASS! **SATISFACTION GUARANTEED**

Yes, it is true that we really can restore the interior of your cruet, vase, decanter and other internally etched items back to near original condition.

We do not oil, wax or cover up the sickness in any way! We actually remove it.

No items are too sick to clean! If we cannot clean an item to meet your satisfaction, the cleaning is FREE!

Send no money up front When we return your item a bill will be enclosed for the postage and cleaning. If you are not satisfied, only the return postage is requested.

Most items clean in 7-8 weeks. All glass is handled and cleaned at your risk. Some very cloudy items may take several additional weeks.

Cocktail Shaker	\$35-\$40.00	Salt Shaker (1)	\$25.00
Cologne	\$30.00	Salt Shaker (2)	\$45.00
Cruet	\$30.00	Vases (under 10")	\$30-\$35.00
Decanter	\$35-\$45.00	Vinegar & Oil	\$30.00
Lavendar Jar	\$25-\$35.00	Water Bottle	\$35-\$40.00

Ship to: Kim Carlisle & Associates
28220 Lamong Road, Dept. C
Sheridan, IN 46069
(317) 758-5767

kcarlisl@indy.net

2001

National Cambridge Collectors, Inc.



Presents



*Blossom Time
Candlelight
Chantilly
Diane
Elaine
Portia
Wildflower*

This series covers seven of the major Cambridge etchings. These booklets are similar in style to the Rose Point book. Each contains an article about the etching, listings of all the known pieces, and illustrations of most items. Economically priced at \$7.95 each (Elaine \$9.95), collectors of these etchings cannot afford to be without a copy. Order your copies now. Value guides not available.

(See page 16)



Stems Without Thorns

As the world's largest supplier of old & new china, crystal, silver and collectibles, Replacements, Ltd. has more than 700 different patterns of Cambridge crystal.

And however much we enjoy selling pieces that were once thought irreplaceable, we love buying them as well. Thanks to people like you, our crystal inventory currently numbers in the hundreds of thousands, and the numbers keep growing every year.

So, if you've been unsuccessfully searching for that elusive piece of Cambridge — or any other type of fine crystal — call us for a free list of pieces available in your pattern. And, if you're looking to sell pieces you currently have, we can help you there, too.

REPLACEMENTS, LTD.
China, Crystal & Silver • Old & New

1-800-REPLACE
(1-800-737-5223)

1089 Knox Road,
PO Box 26029, Dept. CB,
Greensboro, NC 27420
www.replacements.com

DEALERS



DIRECTORY

NOTE: When writing to the dealers listed here, please enclose a SASE!

<p>DAUGHERTY'S ANTIQUES Jerry and Shirley</p> <p>Antiques and Collectibles * Mostly Glass</p> <p>Shows & Mail Orders 2515 Cheshire No. 402-423-7426 Evenings Lincoln NE</p>	<p>YOU CAN ADVERTISE YOUR ANTIQUE SHOP HERE!</p>	<p>THE JONES GROUP Cindy Jones Buy and Sell Cambridge Glass 650 Riverside Drive Sleepy Hollow, NY 10591 914-631-1656 or E-Mail Caprice0@aol.com</p>
<p>Milbra's Crystal Replacement and Matching</p> <p>Buy & Sell Specializing in Cambridge Fostoria Heisey and others</p> <p>Milbra Long (817) 645-6066 Emily Seate (817) 294-9837 PO Box 784, Cleburne, TX 76033 E-mail: longseat@flash.net</p>	<p>CRYSTALLINE COLORS Buy, Sell, and Appreciate Cambridge and Other Elegant Glass I Love Cambridge</p> <p>Lynne R. Franks 216-661-7382 Ohio & Western PA Antique Malls</p>	<p>Mary Jane's Antiques Mary Jane Humes 2653 Burgener Dr., Decatur, IL 62521 Glass: Cambridge, Fostoria, New Martinsville, Duncan Miller, Imperial and Early Pressed mjhumes@aol.com 217-422-5453</p>
<p>THE GLASS URN 456 West Main Street, Suite G Mesa, AZ 85201 480-833-2702 480-838-5936</p> <p>Mail Order Shows Open Shop CAMBRIDGE, FOSTORIA, HEISEY, ETC.</p>	<p> Mother Drucker's Penny Drucker Specializing in Elegant Glassware Shows and Mail Order</p> <p>P.O. Box 50261 Phone: 949-551-5529 Irvine, CA 92619 888-MDRUCKER Website: http://motherdruckers.com</p>	<p>GATEWAY ANTIQUE MALL, INC. JUST NW OF MINNEAPOLIS-ST. PAUL, MN Next to Super 8 in Rogers, MN (I-94/101 Intersection)</p> <p>85 Dealers 7 Days, 10-6 612-428-8286 ELAINE STORCK, OWNER/DIRECTOR</p>
<p>THE DEGENHART PAPERWEIGHT AND GLASS MUSEUM, INC.</p> <p>P.O. Box 186 Cambridge, Ohio 43725-0186 Intersection of US 22 & I 77 Phone 740-432-2626</p>	<p>D & D ANTIQUES</p> <p>Columbus, Ohio</p> <p>Dick Slifko SHOWS ONLY</p>	<p>JAMESTOWN ANTIQUES 16 E. Washington St., Jamestown, OH 45335 Rosepoint and Cambridge our Specialty</p> <p>Buy (937) 675-6491 Sell Susan and Larry Everett</p>
<p>THE GLASS CUPBOARD</p> <p>P.O. Box 652 West End, North Carolina 27376</p> <p>Marcia Ellis Cambridge Show 910-673-2884 and Mail Order</p>	<p>JUDY'S ANTIQUES Judy Bennett 422 S. Ninth Street (Corner of Jefferson) Cambridge, Ohio 43725 Bus 740-432-5855 Res 740-432-3045</p> <p>CAMBRIDGE GLASS MY SPECIALTY</p>	<p>Horse'n Around Antiques Kelvin and Heather Moore Exit 69 on Interstate 64 Woodlawn, IL 62898 e-mail: hmoore@midwest.net TEL 618-735-9114</p> <p>Specializing in Cambridge and other Elegant Glass</p>
<p>FINDER'S ANTIQUE HOUSE 3769 Highway 29 North Danville, VA 24540 (804) 836-6782 Cambridge-Heisey-Duncan-Fostoria</p>	<p>GREEN ACRES FARM 2678 Hazelton Etna Rd., Pataskala, OH 43062 (State Route 310 North)</p> <p>Sat & Sun 1-7 PM 740-927-1882 Antiques, Crystal Glass and Collectibles</p>	<p>CRYSTAL LADY 1817 Vinton St., Omaha, NE 68108</p> <p>Bill, Joann, and Marcie Hagerty Bus 402-341-0643 Res 402-391-6730 Specializing in Elegant Glass & Collectibles</p>
<p>YOU CAN ADVERTISE YOUR ANTIQUE SHOP HERE!</p>	<p>YOU CAN ADVERTISE YOUR ANTIQUE SHOP HERE!</p>	<p>PENNY COURT MALL 637 Wheeling Avenue Cambridge, Ohio 100 Booths 15,000 sq. ft. HOURS Daily 10-6 Sunday Noon-5 Closed Easter Thanksgiving Christmas Call for Other Holiday Hours 740-432-4369</p>
<p>Mon thru Sat 10-5:30 Sunday 12-5:30</p> <p>Bogart's Antiques</p> <p>BUY—SELL—APPRAISE—REFINISH CANE & REED CHAIRS - CLOCK REPAIR</p> <p>Jack & Sharon Bogart St Rte 40 740-872-3514 Shop 7527 East Pike 740-826-7439 Home Norwich, Ohio 43767</p>	<p>YOU CAN ADVERTISE YOUR ANTIQUE SHOP HERE!</p>	<p>MARGARET LANE ANTIQUES 2 E. Main St. New Concord, OH 43762 Lynn Welker 740-826-7414</p> <p>Cambridge Glass Matching Service Hours Mon-Fri 10-12 AM 1-5 PM or by Appointment</p>
<p>ISAACS ANTIQUES (740) 826-4015</p> <p>See our booths in Penny Court Mall in Cambridge and White Pillars Antique Mall at Rt. 40, one mile west of I-70 Norwich Exit #164</p>	<p>ALADDIN LAMP BOOKS Free List Figurine Lamps Wanted Bill & Treva Courter</p> <p>3935 Kelley Rd Kevil, KY 42053 Phone 270-488-2116 FAX 270-488-2055</p>	<p>DEXTER CITY ANTIQUE MALL P.O. Box 70, Dexter City, Ohio 45727 (740) 783-5921</p> <p>Located on Ohio St. Rt. 821 Between Exits 16 & 25 off I-77 Just 30 min. South of Cambridge, Ohio</p>

Auction Lists Only
for the 2002 NCC Benefit Auction
(DO NOT SEND GLASS)

Lists Will Be Accepted
SEPTEMBER 1 TO OCTOBER 1, 2001

Send your lists to:

AUCTION
c/o National Cambridge Collectors
P.O. Box 416
Cambridge, OH 43725-0416

ALSO...

**MAKE PLANS TO COME
TO CAMBRIDGE
FOR THE NOVEMBER
QUARTERLY MEETING
AND
EDUCATION PROGRAM
NOVEMBER 3**

*See More Details on
Page 11 Inside*

"I have learned this at least by my experiment: that if one advances confidently in the direction of his dreams, and endeavors to live the life he has imagined, he will meet with a success unexpected in common hours."

--Henry David Thoreau

National Cambridge Collectors Inc
PO Box 416
Cambridge OH 43725-0416

<http://www.cambridgeglass.org>
e-mail: NCC_CrystalBall@yahoo.com

FIRST CLASS MAIL
U.S. POSTAGE
PAID
PERMIT NO. 1
CAMBRIDGE, OH

FIRST CLASS MAIL

Membership Renewal Notice

**If the date on your address label is 9-2001,
this is your LAST ISSUE of the Crystal Ball.**
Please take a moment and renew now. Thank you!
