

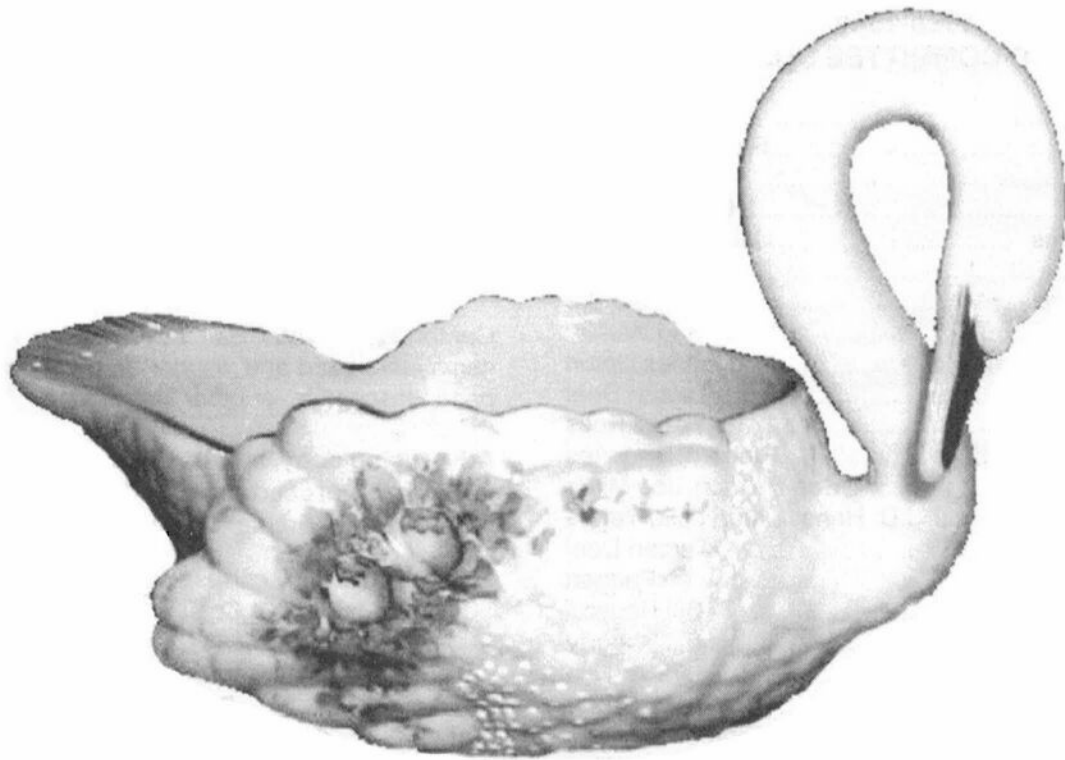


Cambridge Crystal Ball

Published monthly by National Cambridge Collectors, Inc.
to encourage and report the discovery of the elegant and boundless product of the
Cambridge Glass Company of Cambridge, Ohio

Issue No. 317

September 1999



The Cambridge Swans, Part III

by Les Hansen

Inside This Issue:

Great Job - Grant Awarded
Candlesticks
NCC Grant Writing Update
NCC Convention 1999

Decorations will be the focus of this article, which is the third of four articles on Cambridge swans. By the end of the previous article, there were at least 70 different type, size, and color combinations of swans. Now we move on to a wide variety of decorations that were applied after the swans left the molds.

Most decorations were applied to swans at the Cambridge factory; however, various decorations called "Charleton" were applied by

(Continued on page 4)

Cambridge Crystal Ball

Official publication of National Cambridge Collectors Inc., a non-profit corporation with tax exempt status. Published once a month for the benefit of its members. All rights reserved; reproduction in whole or in part without written permission of NCC and the author is prohibited.

Membership is available for individual members at \$17.00 per year and an additional \$3.00 for associate members (12 years of age and older, residing in the same household). Of the master member dues, \$12.00 is credited to a one-year subscription to the *Crystal Ball*. All members have voting rights, but only one *Crystal Ball* per household. **Multi-year memberships are available: 2 years for \$33.00, 3 years for \$49.00.**

1998-1999

OFFICERS AND COMMITTEE CHAIRPERSONS

President	Tarzan Deel
Vice President	Richard D. Jones
Secretary	Sharon Miller
Treasurer	Charles Upton
Sergeant-at-Arms	Michael Neilson
Acquisitions	Kelvin Moore
Budget & Finance	Dennis Snyder
By-Laws	Bud Walker
Corresponding Secretary	Charles Upton
Technology	Tarzan Deel
Membership	Jeff Ross
Museum Relocation	Richard D. Jones
Museum Facilities	Carl Beynon, Joe Miller
Museum Interior	J.D. Hanes, Marybelle Teters
Non-Glass Items	Tarzan Deel
Nominating	Joy McFadden
Program	Bill Hagerty
Projects	Bill Hagerty
Publications	Mark A. Nye
Publicity	Cynthia A. Arent
Study Group Advisor	Marybelle Teters
1999 Convention	Mark A. Nye
1999 Auction	Squeek and Dorothy Rieker, Tom and Noreen Kullman, Lynn Welker
1999 Glass Show	Mary Beth Hackett, Joy McFadden
1999 Glass Dash	Bud Walker, Mike Arent
<i>Crystal Ball</i> Editor	Lorraine Weinman
<i>Crystal Ball</i> Circulation Directors ...	Lisa and Mike Neilson
WebMaster	Linda Roberts

Internet website: www.cambridgeglass.org

DUE TO FLOODING IN CAMBRIDGE, OHIO, THE NATIONAL CAMBRIDGE COLLECTORS' MUSEUM OF CAMBRIDGE GLASS AT 9931 EAST PIKE ROAD WILL NOT BE OPEN.

THE TEMPORARY NCC MUSEUM IS LOCATED IN PENNY COURT MALL IN DOWNTOWN CAMBRIDGE, OHIO.

ADVERTISING RATES

Display Rates (camera ready ads preferred)

Unit	Members	Non-Members
Full Page	\$45.00	\$60.00
3/4 Page	\$35.00	\$50.00
1/2 Page	\$25.00	\$35.00
1/4 Page	\$15.00	\$25.00
1/8 Page	\$10.00	\$15.00

(\$5.00 additional if a photograph is included in display ad)

Classified Rates

10 cents a word \$2.00 minimum

Abbreviations and initials count as words. Type sizes cannot be mixed in classified ads. **Payment in full must accompany all ad copy.** Contact Editor for copy assistance.

Dealer Directory

Six Line Maximum \$24.00 for 12 month contract

Also included - Listing on our Internet site at:

www.cambridgeglass.org

Cambridge *Crystal Ball* assumes no responsibility for items advertised and will not be responsible for errors in price, description, or other information.

Advertising copy, letters, articles, must be received by the 5th of preceding month to be considered for publication in the next issue.

Please address all correspondence (include SASE) to:
(or E-Mail NCC_Crystal_Ball@compuserve.com)

National Cambridge Collectors, Inc.

P.O. Box 416

Cambridge, OH 43725-0416

President Tarzan Deel	540-869-3949
Vice President Rick Jones	914-631-1656
Secretary Sharon Miller	740-685-6513
Membership	email: jaross@cambridgeoh.com
NCC Museum: Phone	740-432-4245
Fax	740-439-9223

Please notify us immediately of any address change.

Opinions or information stated in any signed article or letter printed in the *Crystal Ball* are those of the author and may not agree with National Cambridge Collectors, Inc. The Editor reserves the right to refuse and to edit any material submitted for publication to conform to the editorial style of the *Crystal Ball*. Members are encouraged to write to NCC and the *Crystal Ball* sharing their knowledge and questions!

President's Message

Great Job – Grant Awarded

Another month and another article, I wish I had a lot of things to relate to you but I do not. There has been some interest in our original museum location, which is encouraging. The committees continue to look into the new property and possible uses of the new location.

Did you take a look at the new location in the last issue? If not, please take the time to review it and let us know what you think. By the time this article is published, we will have concluded our August quarterly meeting, where we will have discussed this at some length. Your input is necessary for the board to make an informed decision. So if you couldn't make the meeting, please send us your questions and/or observations.

We have been approved for our first grant of \$2,000! This is the John W. and Edna McManus Shepard Fund grant. Great work Cindy Arent, Sharon Miller, and Rick Jones and anyone else who has been helping with the grant process. This has been uncharted territory for us and is necessary if we plan to develop the property into a museum.

As in the last issue, we need volunteers for the Hartford and Harrisburg shows. I will be at the Old Dominion DG show in the Virginia suburbs of Washington, DC, and need all the help I can get. The Old Dominion DG club has offered us three 6' tables to use for whatever purpose we want; so it will be at least book and scottie dogs on the tables.

We had some scheduling problems with the November quarterly meeting; please notice the change in place. The country club where we have held the November meeting for the past few years has another group in on our normal weekend. Bill Hagerty has resolved this and we will now be meeting at the Holiday Inn.

I hope everyone that can makes the November quarterly meeting, we should resolve some of the issues of the new Museum, I hope to have more on this in the October *Crystal Ball*. Until then, good hunting and be safe.

Tarzan

SPECIAL SALE FOR A LIMITED TIME!

AVAILABLE NOW...

The 1940-1941 Cambridge Glass Co. Catalog Reprint

250-page reprint of original catalog and all well-known supplemental pages.

Drilled, ready for placement in your own three-ring binder.

Due to its size, the reprint DOES NOT include a value guide. B&W

Regularly \$34.95 — NOW **\$25.00 (plus \$3.00 shipping & handling)**

Send all orders to the NCC post office box - See Page 17 for the address.

(CAMBRIDGE SWANS - Continued from page 3)

Wasserberg & Co., Inc., New York, NY. Swans with Charleton decoration are very popular with collectors. The Wasserberg Company purchased Crown Tuscan, Milk, and Crystal blanks (undecorated) from Cambridge and decorated them with Charleton enamel decorations, which usually had floral motifs. A large amount of Crown Tuscan glass, especially from the Seashell line, was purchased by the Wasserberg Company to receive Charleton decoration before being resold. Mark Nye wrote an article on Crown Tuscan for Issue #155 (March 1986) of the *Crystal Ball* that provides additional information on Charleton decorations, including an advertisement from the Wasserberg Company. Occasionally, Charleton-decorated items retain an original Wasserberg sticker, which has the words "Charleton hand decorated" and a number handwritten with a lead pencil. Cambridge glass is often found today with a Charleton decoration; however, Cambridge swans with Charleton surface infrequently.

Charleton decorations were applied to Type 3 swans (introduced in 1939) only, which makes sense because Type 3 swans have no feather detail and, therefore, have smooth wing surfaces on which the enamel could be easily applied and adhere. Thus, the Charleton decorated swans can be dated for the most part to the 1940s and 1950s. Crown Tuscan Type 3 swans were produced in only the 3" and 8½" sizes, and both sizes were decorated with Charleton. However, only two Charleton decorations are known on both sizes of Crown Tuscan swans – "Gardenia" and "Blue Mist." Swans with these two decorations are presented in Plate 60 of the *Colors in Cambridge* book, and both decorations are quite pleasing on the swans. Nye's article from Issue #155 included an excerpt from the May 1952 issue of the *Crockery & Glass Journal*, which indicated that Blue Mist was a new decoration at that time. Therefore, the Gardenia and Blue Mist decorations might have been introduced later and had a shorter production period than the Charleton decoration of roses, which is much more commonly found on Crown Tuscan items.

At least two sizes of Crystal swans – the 8½" and 13" – were decorated with Charleton. Like the other Charleton-decorated swans, these had gold applied to the beaks and along the edges of the wings. However, this decoration has pink-white roses with green foliage. Because of its size and beauty, the 13" Charleton swan is especially eye-catching. It seems likely that Crystal swans of sizes other than the 8½" and the 13" would have received the Charleton decoration, but I am not aware of Charleton on other sizes.

Milk swans were produced only in the first half of 1954, but a small number have been found with a Charleton

decoration of small pink flowers along the edge of the wings (inner side of the wings on the 3") with gold flecks all over the outside of the swans. To date, this decoration has been found on only the 3" and 6½" sizes of swans, but the 4½" and 8½" sizes of Milk swans might have received this Charleton decoration, too. Besides Charleton decorations, some 3" and 8½" swans in both Crown Tuscan and Milk have a simple decoration of gold trim on their beaks and along their outer edges.

Next, let's discuss swans with satin finishes. Because dipping glass in acid to obtain a satin finish is an easy thing to do, I'm always leery of paying a premium price for glass because of a satin finish. A non-satin item can quickly become a satin item, and commercial operations exist today that will dip glass in acid to achieve a satin finish. Also, Imperial produced crystal swans using the Cambridge Type 3 molds for the 6½", 8½", and 10" sizes after the final closure of the Cambridge factory. Supposedly, none of the crystal swans produced by Imperial were sold plain, but rather all received a satin finish or were ruby flashed. Apparently, differentiating Imperial satin-finished swans from Cambridge satin-finished swans in these three sizes of Type 3 is difficult, if not impossible. That said, we know that Cambridge applied satin finishes to some swans.

In particular, the Type 1 (full feather detail) Crystal swans received a special treatment by Cambridge that involved placing a satin finish on the entire swan and then applying coral enamel to the beak and black enamel to the underside of the webbed feet. An advertisement from the April 1930 issue of *Crystal, Glass and Lamps* was reproduced in Issue #190 (February 1989) of the *Crystal Ball* and shows a 10" swan with this decoration. These coral-beaked swans are highly prized by swan collectors and have been found in all of the sizes of Type 1 swans except the 13". The 3" Type 2 Crystal swan also received this treatment. Incidentally, the coral-beaked Ebony swan in Plate 14 of the *Colors in Cambridge* book is apparently a one-of-a-kind (special production item) that can be traced to the home of a Cambridge worker. Sometimes satin finished Crystal swans have non-satin (shiny) body parts, often beaks and feet, and these items likely received their satin finishes at the Cambridge factory.

Rockwell purchased Ebony swan blanks from Cambridge and placed a very heavy silver overlay on them. Only the 3" (both Type 1 and Type 2) and the 10" (Type 1) Ebony swans have been found with Rockwell silver overlay. Silver covers the entire head, neck, and body of these swans, except for the eyes and the "bunch" of feathers in the middle of each side. These Ebony/silver swans are breathtaking! A photograph of a set that includes a

(Continued on page 12)



**SEND
AUCTION
LISTS
NOW!!**

Now is the time to send your
auction lists.
(DO NOT SEND GLASS)

Send your lists to:

AUCTION
c/o National Cambridge Collectors
P.O. Box 416
Cambridge, OH 43725-0416

**LISTS WILL BE ACCEPTED
SEPTEMBER 1 to OCTOBER 1, 1999**

IN MEMORIAM

We wish to express our sympathy to NCC members Mary Beth Hackett and Fleur De Lys Healy, and their friends and families.

Mary Beth Hackett's father, David Hackett, died unexpectedly on July 5, 1999. Mary Beth has been a long-time member of NCC and has been the Glass Show Co-Chairperson for a number of years.

Fleur De Lys Healy's husband, Leonard Healy, passed away December 29, 1998.

Our heartfelt sympathy is extended and may it be a comfort to know that others care and share in your loss.

Tentative 1999-2000 Calendar Planning

Mark your calendars now with these important events during the coming year:

November 6

November Quarterly Meeting and
Education Program
Cambridge Holiday Inn
Cambridge, Ohio

March 3

March Quarterly Meeting
Pritchard Laughlin Civic Center
Cambridge, Ohio

March 4

All Cambridge Glass Auction
Pritchard Laughlin Civic Center
Cambridge, Ohio

June 21-25

2000 National Cambridge Collectors' Convention
Pritchard Laughlin Civic Center
Cambridge, Ohio

June 23-25

NCC Glass Show and Sale
Pritchard Laughlin Civic Center
Cambridge, Ohio

June 24

"Glass Dash" ("flea" market)
Beech Grove Family Development Center
Cambridge, Ohio

June 25

NCC Annual Meeting
Pritchard Laughlin Civic Center
Cambridge, Ohio

August 26

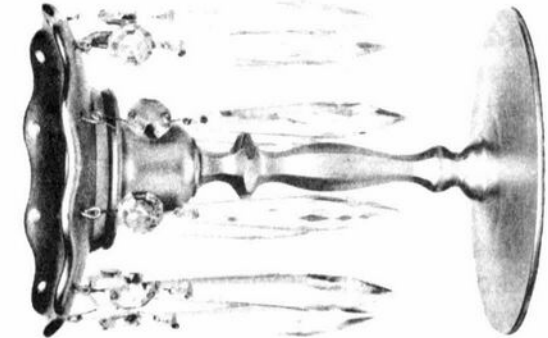
August Quarterly Meeting
Theo's Restaurant/Coney Island (tentative)
Cambridge, Ohio

Lustre Cut Prism Candlesticks

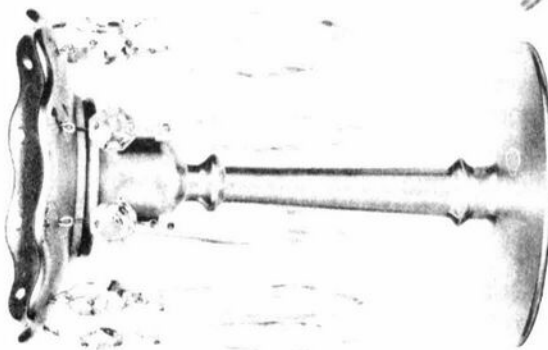
Patented Lock Bobeche

Page I

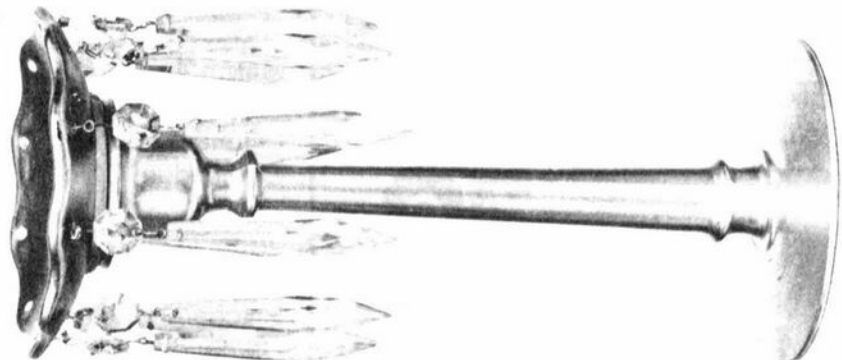
Page 6



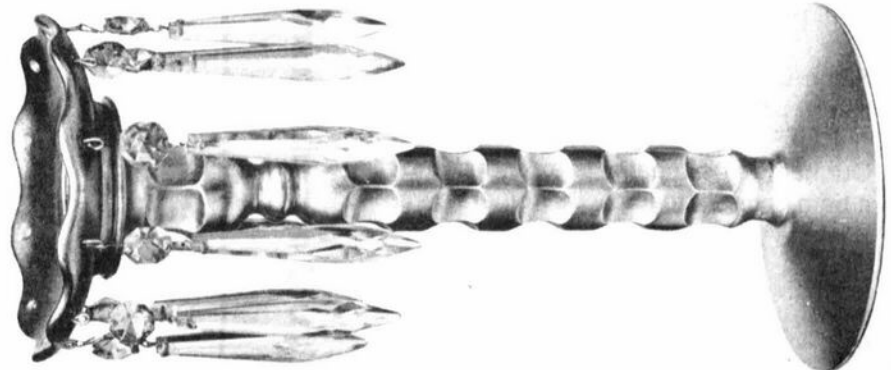
1270-6 1/2"



1271-7"

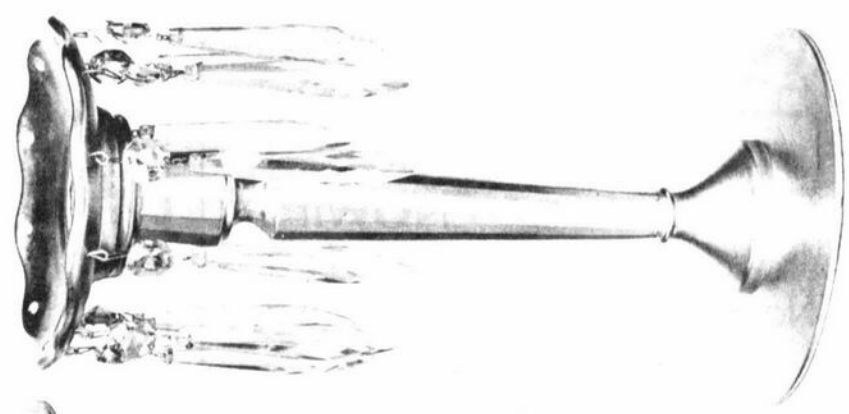


1273-10 1/2"



1269-11"

The Cambridge Glass Co.



1272-10 1/2"



Candlesticks

by Mark Nye

For almost 25 years NCC has had access to the 1930 Cambridge catalog and its supplements. Twenty-three years ago, we were fortunate, in conjunction with Collectors Books, to be able to reprint this catalog so all Cambridge collectors might have access to the information it contained. The one thing the catalog does not contain is specific information regarding color and, in numerous instances, decorations which include etchings, cuttings, etc. Such information was usually provided in separate price lists.

To my knowledge there has never been a report of a printed price list for any portion of this catalog being found. While Cambridge did use what they called "Circular Letters" to keep their sales force abreast of new products, changing prices, and perhaps prices for supplemental catalog pages, it is my feeling at least the original 1930 catalog would have had a printed price list. Hopefully one will turn up in the future. A few years ago a member did obtain a number of circular letters from 1932 (as well as 1929) and these do shed light on color and decoration available on a number of items that appear in the 1930 catalog and its supplements.

It was concluded a number of years ago that the catalog supplement with pages letter A-K were issued in late 1930. Among those pages was one featuring "Lustre Cut Prism Candlesticks." The term "lustre cut" describes the prism, not the bobèche or candlestick. Circular Letter #150 issued sometime in 1932 provides color availability as well as which etchings and cuttings were being offered on the candlesticks along with the type of prisms that could be had. In all instances, these candlesticks came with Crystal bobèches and prisms. While etched bobèches are known, in all probability the candlesticks as offered in Circular Letter 152 came with plain bobèches. The candlesticks as seen on the 1930 catalog page all have #1 prisms. The #2 prism is seen on the 1440/2 candelabrum, the illustration coming from the 1940 catalog.

The 1270 candlestick came only with the #1 prisms. It was offered in Crystal, Amber, Ebony, Gold Krystal, and Carmen. With the exception of Carmen, all could be had

plain or etched Apple Blossom, Gloria, Diane, Lorna, or Portia. On Crystal blanks a number of Rock Crystal engravings were available, these being 541, 551, 560, 574, 611, 615, 621, 622, 623, 624, 625, 626, 629, 637, 638, 639, 640, 641, and 642.

Candlestick #1271 was offered in three colors: Crystal, Emerald, and Peach. (The latter two are what we now call Light Emerald and Peach-Blo.) Like the 1271, it came only with #1 prisms. While not offered with any Rock Crystal engravings, the same etchings available on the 1270 were also to be had on the 1271.



1440 2--9 in.
(No. 19 Bobèche & No. 2 Prisms)
1440/1 Also Furnished
(No. 19 Bobèche & 8 No. 1 3 in. Prisms)

Available in Crystal, Amber, Ebony, and Gold Krystal, the 1272 10-1/2 inch candlestick was to be had with the same group of etchings as the 1270 and 1271. However, it came with either #1 or #2 prisms. The Rock Crystal engravings listed for 1270 were also available on Crystal 1272 candlesticks.

Differing in the colors in which it was being made in 1932 is the 1273 10-1/2 inch candlestick. In this instance Circular Letter 150 offered it in Crystal, Emerald, Peach, Forest Green with Crystal foot, and Royal Blue with Crystal foot. (One can only assume since there was no mention of a Crystal foot, the other colored sticks came with the foot the same color as the stick itself.) Again, according to the circular letter, the same group of etchings listed for 1270 was available on 1273 candlesticks in all of the mentioned colors. The 1273 came with either #1 or #2 prisms but was not listed as being available with any of the Rock Crystal engravings.

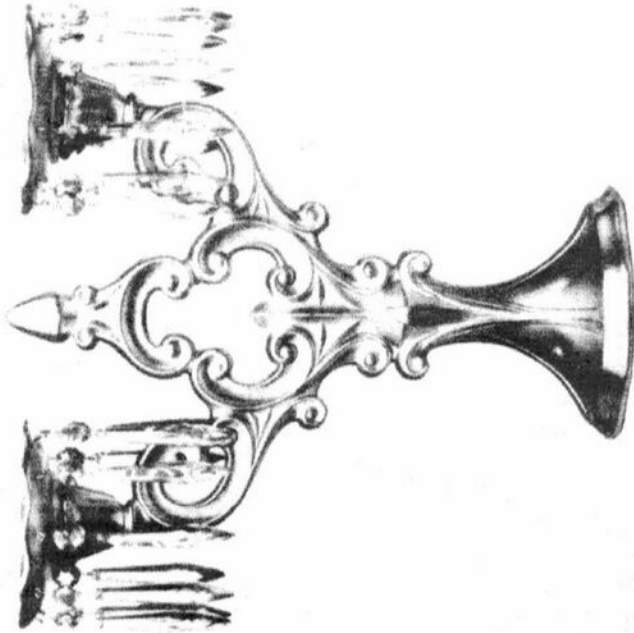
The last candlestick on this page, the 11 inch 1269 was not available decorated but did come with either #1 or #2 prisms. At the time Circular Letter 150 was issued, the 1269 was offered in seven colors: Crystal, Amber with Crystal foot, Royal Blue with Crystal foot, Forest Green with Crystal foot, Carmen with Crystal foot, Gold Krystal, and Heatherbloom.

Not shown until the 1931 catalog supplement, the 1274 13-1/2 inch 2-light Lustre Cut Prism Candelabrum was

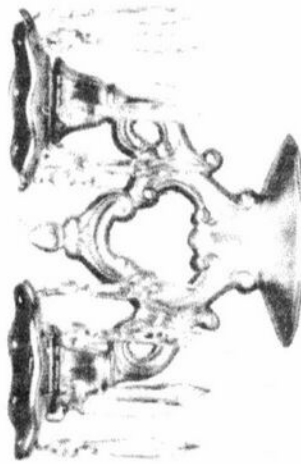
(Continued on page 9)

Miscellaneous

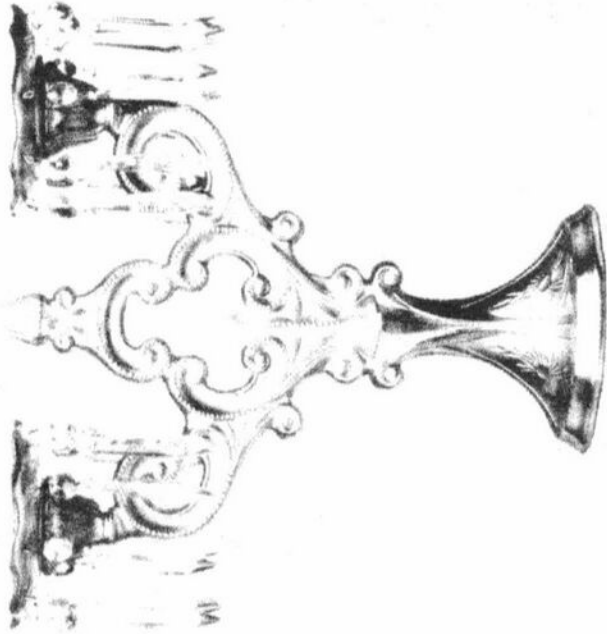
Page 31-21



1274-13 1/2" 2 Light
Lustre Cut Prism Candelabrum



1288 2 Light
Lustre Cut Prism Candelabrum



1274-13 1/2" 2 Light
Lustre Cut Prism Candelabrum
Rock Crystal Engraved? 60?



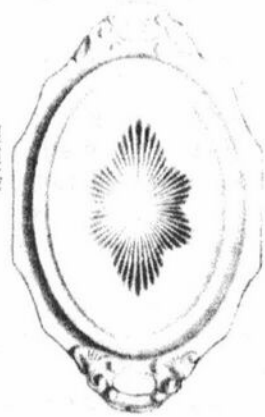
Large "Bunny" Box and Cover



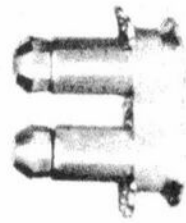
1076 Sugar and Cream
Eclairna



Small "Bunny" Box and Cover



1071-9 2 Hill Tray



1259 3-Pc. Salt and Pepper
Shaker Set with Glass Tops



1230 Cigarette Box and Ash Tray



NCC Grant Writing Update

by Cindy Arent

In May 1999 the NCC grant writing group submitted an application to the John W. and Edna McManus Shepard Fund, which is administered by the Columbus Foundation. The grant was written to obtain money to be used toward the cost of architectural plans for a new museum.

On July 30, a call was made to the Columbus Foundation to determine the status of the grant. The senior program officer informed us that we had received \$2000 to be used toward the project. We were very excited since this was our first attempt at grant writing.

The grant writing group is now in the process of preparing a grant application to be submitted to the Kiwanis Foundation of Cambridge, Ohio. This grant will ask for money to replace the educational equipment lost in the flood and ask for materials to enhance our educational programs in the absence of a museum. The programs, which will be portable, will then be available in the future at the new museum as well as to have the ability to travel around the country to educate members and the general public about the history and beautiful glassware produced

by The Cambridge Glass Company. The grant deadline is September 1999 and will be awarded to qualifying nonprofit organizations in December 1999.

Anyone willing to help with the grant writing process is encouraged to do so. Just drop us a line at the club address or send an email, and we will contact you regarding what you can do to help. Grant writing is very time consuming, so many individuals or groups will be needed to achieve our goal. Thank you for your help and encouragement.

Please write to:

National Cambridge Collectors, Inc.
P.O. Box 416
Cambridge, OH 43725-0416

ATTN: Grant Writing Group

YOUR HELP IS NEEDED!

*Above all,
try something.*

Franklin D. Roosevelt



(CANDLESTICKS - Continued from page 7)

then being made only in Crystal but with all of the previously listed etchings and engravings. It was to be had with either #1 or #2 prisms.

Shown on the same supplemental page as the 1274 was the 1268 2-light candelabrum. Sold only with #1 prisms, it came in Crystal, Amber, Emerald, Peach, Forest Green, and Gold Krystol. Prices were provided for plain and etched pieces in all of the colors. Offered on Crystal blanks only were the previous listed Rock Crystal engravings as well as Laurel Wreath.

Go Team Go!

Fall is here and that brings out the team sports . Some teams have been selected for the "Enamel League." Is your team here? Can you find it? If you look closely you will find sixteen of the "Enamels" from the Cambridge Varsity Glassware line right on this page! Find them up, down, across, diagonally, and perhaps backwards!

May the Best Team Win!

N	D	R	O	F	N	A	T	S	N	A	I
P	O	S	A	H	W	N	I	U	W	M	N
N	O	R	M	M	O	S	G	A	O	H	D
U	S	A	T	H	R	Y	E	V	L	O	W
H	T	E	O	H	B	A	R	E	V	I	R
O	R	B	R	O	W	L	S	R	E	N	E
N	E	B	A	D	G	E	R	S	R	D	M
Y	T	Y	M	J	A	N	S	P	I	R	A
T	A	J	H	S	R	E	H	T	N	A	P
R	R	V	E	R	D	G	U	R	E	V	S
M	T	T	R	O	J	A	N	S	S	R	H
D	A	W	S	U	T	O	V	D	O	A	N
I	N	O	T	R	E	D	A	M	E	H	E
J	S	N	A	I	D	N	I	D	A	N	S

- | | |
|--------------|------------|
| AMHERST | OSU |
| BADGERS | PANTHERS |
| BEARS | STANFORD |
| BROWN | TARTANS |
| HARVARD | TIGERS |
| INDIANS | TROJANS |
| NORTHWESTERN | WOLVERINES |
| NOTRE DAME | YALE |



THANKS AGAIN EVERYONE!!!! Over 500 pair sold by August 1, 1999. NOW NCC has available, for the same price, the same Scotties - in the same color, for the same reason - only now they are FROSTED and are available all this year, 1999, just as are the non-frosted Scotties for the year 1999. Everyone has the opportunity to purchase one or any number of pair using the same order blank below. The price is the same as the non-frosted ones and the \$110 includes shipping.

Bill Hagerty

WON'T YOU HELP?

The Ohio flood of 1998 destroyed the National Cambridge Collectors' Museum. Due to our great loss we are offering the public an opportunity to help by purchasing a special edition of Scottie Dog bookends. These Scotties will be made from the original Cambridge Glass mold in a "Moonlight" blue color, and will be clearly marked with the N.C.C. name, date and Mosser logo. This color will be limited to the year 1999. The cost will be \$100 per set. Shipping charge is \$10 per set. If you are an Ohio resident, you will be subject to 6 1/2% sales tax (\$6.50 per set).

THANKS!!!!

Order blank

Name: (please print) _____

Address: _____ Phone: (____) _____ - _____
(UPS requires a street address) (Required if you give a P O. Box)

City: _____ State: _____ Zip Code: _____ - _____

No. of pair FROSTED	_____	X	\$100.00	=	\$ _____	
No. of pair NON-FROSTED	_____	X	\$100.00	=	\$ _____	Check number \$ _____
Shipping - \$10.00 per pair	_____	X	\$10.00	=	\$ _____	Amount \$ _____
Sales tax (if Ohio Resident)			\$ _____		(\$6.50 per pair)	Date _____
Total of order				=	\$ _____	

Make checks payable to: **N.C.C., Inc.**

Mail to: **National Cambridge Collectors, Inc.**
P. O. Box 416
Cambridge, OH 43725-0416

P.S. Those of you who are dealers and are buying the above Scotties for resale, and will not be paying the State of Ohio Tax, will have to sign a tax exempt form for such and all lines must be filled out completely to be exempt from paying the State of Ohio Sales Tax.

The undersigned hereby claims exemption to purchase of tangible personal property from the National Cambridge Collectors, Inc. on and after February 5, 1999 and certifies that this claim is based upon the purchaser's proposed use of the items purchased, the activity of the purchaser, or both as shown hereon: (Exemption Number from Rule #93.

_____	_____
<small>(Purchaser's Name)</small>	<small>(Purchaser's Address)</small>
_____	_____
<small>(Purchaser's Activity)</small>	<small>(By - Signature and Title)</small>
_____	_____
<small>(Date Signed)</small>	<small>(Vendor's License Number)</small>

**National Cambridge Collectors, Inc.
NOVEMBER QUARTERLY MEETING**

**Saturday, November 6, 1999
Cambridge Holiday Inn
Cambridge, Ohio**

COCKTAILS - Cash Bar at 5:00 p.m.
DINNER at 6:00 p.m.
QUARTERLY MEETING at 7:30 p.m.

**PROGRAM: CANDY CONTAINERS
WITH GUEST SPEAKER TERRY L. WHITMYER
PAST PRESIDENT, CANDY CONTAINER COLLECTORS OF AMERICA**
(Please bring any glass candy containers by Cambridge or other companies to help further the purpose to educate us.)

Buffet dinner: Baked Cod, Sliced Sirloin of Beef, Fried Chicken, Sliced Baked Ham, Home Style Meatloaf, Pasta Primavera, Baked Lasagna with Meat Sauce, Swiss Steak, Full Salad Bar, Dinner Rolls & Butter, Non-Alcoholic Beverage, and Dessert.

\$17.50 per member

PLEASE MAKE YOUR RESERVATIONS EARLY!

**RESERVATIONS MUST BE RECEIVED AT THE
NCC POST OFFICE BOX BEFORE NOVEMBER 1**

**NOVEMBER
QUARTERLY MEETING**

**Saturday, November 6, 1999
Cambridge Holiday Inn**

Name(s) _____

Number Attending _____

Amount Enclosed _____
(\$17.50 per member)

Mail to:

National Cambridge Collectors, Inc.
P.O. Box 416
Cambridge, OH 43725-0416

**RESERVATIONS MUST BE
MADE BEFORE NOVEMBER 1**

(CAMBRIDGE SWANS - Continued from page 4)
10" swan with six 3" (Type 2) swans appeared in Issue #298 (February 1998) of the *Crystal Ball*.

A large number of alternative decorations were applied to 3" Type 2 swans (produced 1933 to 1939). These include a gold overlay on the head, neck, and rear of Ebony 3" swans, and another scheme that has gold overlay on much of the wings, too. A few Dianthus Pink and Light Emerald 3" Type 2 swans have gold decoration over their beaks, wings, and feet. Some Crystal 3" Type 2 swans have silver overlay over their entire bodies, except the inside and bottom; however, the quality of this silver overlay was poor and, in most cases, the overlay has deteriorated over time.

A small number of 3" Type 2 swans in Crown Tuscan have been found with black or green enamel lines along the outer edges of the wings and eyes. At least one 8½" Type 1 swan in Crown Tuscan is known to have the green enamel lines. Numerous Crown Tuscan items from the 1930s were decorated with black, green, or red enamel lines; therefore, Cambridge could have also produced 8½" Crown Tuscan swans with the black line decoration as well as 3" and 8½" Crown Tuscan swans with the red line decoration. An 8½" Type 1 swan with a special treatment of multi-color flashing on Crystal was displayed at the

Bring and Brag session during the 1998 NCC Convention; additional swans with this treatment may or may not have been produced. Also, some 8½" Type 1 swans in Peachblo (or Dianthus Pink) and Light Emerald had gold trim applied to their beaks.

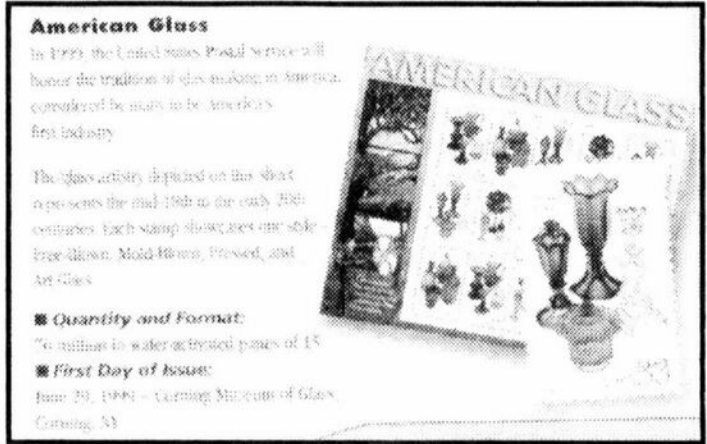
Reports of unusual decorations on swans abound, and certainly some of these reports are genuine. Almost certainly, swans with decorations other than those reported here will be uncovered as the years go by, and this is one of the reasons that swan collecting is so challenging. Thirty-two different decorated swans were reviewed in this article and, when added to the 70 different undecorated swans, result in a total of at least 102 swans for collectors to seek. (This total excludes candlestick swans, flowerpot swans, and covered swans, all of which will be covered in the next article of the series).

Generally speaking, most Cambridge swans, other than some types and sizes of Crystal, are not easily found today. Decorated swans are extremely difficult to add to collections, and there is a continuously growing list of decorated swans for which to hunt. If you have additional information regarding Cambridge swans in general, or decorated swans in particular, feel free to contact me at 898 Hunt Place, St. Paul, MN 55114 or by email at: hanse009@tc.umn.edu

LETTERS FROM MEMBERS AND FRIENDS

NCC Members:

For your information: order forms at P.O. or call 1-888-372-0038.



Happy Collecting,
"Zeke"



Dear Board:

I'm interested in the show in Hartford and may be able to attend...

Please let me know when it is...

Thanks,
Jean

Dear Jean:

The "Hartford" show is November 13 and 14 (a Saturday and Sunday). It is actually located in Southington, CT, a suburb of Hartford.

Rick (Jones)

Hi:

Last year, I gave a short speech on the flood and Mary Martha [Mitchell] at the NDGA Convention. Since I couldn't go this year, I wrote a letter to them and Lydia McNeil was kind enough to read it Friday night at their annual meeting. She said they were "touched" that we were thoughtful enough to keep their members in the loop...I also want to thank Lydia for delivering this.

Rick (Jones)

Hello, I bring greetings from Rick Jones, past president of the National Cambridge Collectors, Inc. Rick regrets he could not be here in person this year as he very much enjoyed the fellowship and warmth from NDGA members at San Antonio last year.

He wanted to say a heartfelt thank you to everyone who has rallied around the NCC Museum plight for the past year. To date, nearly \$20,000 in donations have been received from over 25 regional and national glass clubs as well as several glass shows from all around the country. The outpouring of support has been overwhelming and is incredibly appreciated. It has helped with the clean-up of the museum and the start of restoration.

Additionally, he thanks the friends of Roy Sykes for their donations and was very saddened to hear of his passing this year. All Cambridge members send their very best to Ralph. Rick feels so fortunate to have had the chance to meet Roy at San Antonio last year.

To update everyone on the Museum status ... the old building has been declared a total loss and the property has just been listed with a realtor. Proceeds will be used to help build a new museum in a different, and drier, section of town. The Club just purchased an acre of land in the heart of the tourism and commercial section of Cambridge, Ohio.

At this point, architectural drawings are being prepared and both long- and short-range budgets are being examined. A team has been established to seek grant money to help with the new construction. It will be a time-consuming and tedious process but they hope to invite all of you to a grand re-opening party, perhaps in the spring of 2001. Again, they thank everyone for their

(Continued on page 14)

(LETTERS - Continued from page 13)

thoughts, donations and pledges. Most of you should have received acknowledgment letters by now and if you haven't, please know they will be arriving shortly.

Thanks again and please have a great convention!

Rick Jones

Hi:

I have two #402 12-inch vases in Light Emerald Green, one with Cambridge etch #717 (bird) and the other with a Paden City etch. Was it common practice to share moulds between glass producers? Are there other examples?

Bill

Dear Bill:

The answer to the Cambridge #402 vase question is very complicated, unfortunately. Four companies made this vase in 12" size: Cambridge, Paden City, Fenton, and Imperial. None of the vases are reproductions, it was just a popular shape. Fenton made it in an 8" size, as did Cambridge. Fenton and Imperial made it in a 10" size.

So how to tell the difference. If they were all decorated, it would be very easy. Obviously, the one with the Cambridge #717 bird etch is Cambridge, and the one with the Paden City etch is Paden City. Those are easy. Many of the Fenton ones had a typical Fenton grey cut Daisy type pattern. However, most companies of this era cut grey cuttings of flowers on their vases.

If you have an undecorated vase in pink, pale green, amber, crystal, red, or cobalt, it is not as easy. The complication seems to come in the 12" size one. I do not have an Imperial or Paden City one to measure. The Fenton is 7" across the top and 11" around the narrowest part above the shoulder. The Cambridge is 7 3/4" across the top and 11" around the narrowest part above the shoulder. Most of the Fenton transparent ones do have an optic as do the Cambridge ones, but some of the darker colors do not have the optic. The most major difference seems to be in the shape of the vase itself at the top. The Cambridge and Fenton flare out somewhat at the top edge. The Paden City and Imperial do not flare and flatten at the top, they just come straight out from the shoulder. The Fenton one does flatten somewhat at the top edge flare, whereas the Cambridge just flares.

I know this is terribly confusing, but hope this helps.

Lynn (Welker)

UPCOMING SHOWS

Elegant Glass Show and Sale - October 16 & 17
Jim Miller Park, Marietta Georgia
More information: 770-928-6189 ref #1201

All Depression Glass Show - November 13 & 14
Sponsored by Connecticut Cambridge Boosters
Southington, CT

Eastern National Antiques Show - Nov. 19-21
Harrisburg, PA
More information: 215-855-5423

*Know of any good glass shows coming up?
Drop us a line here at the Crystal Ball and we'll
be glad to share the information.*

Recent Finds

Looking for recent "finds."

Have you found something recently that you would like to share the fun and excitement of with other members??

We would love to see!! Please send photos...or even just tell us about it!



This interesting lightbulb was seen at the Glass Identification session at this year's NCC Convention. Inside is a Scottie dog!! Speaking of Scotties ... Have you ordered your Scottie Dog Bookends yet??? They'd also make a wonderful Christmas gift! (This photo was provided by Mary Welker)

National Cambridge Collectors Convention 1999

by Melanie Cole

Although I have been a member of the NCC, Inc. for about three years, I had not attended their annual convention until this year. Needless to say, I was quite excited at the prospect of actually being there, as I had heard a lot about the big show from my good friends and fellow Cambridge collectors, Helen and Steve Klemko, who regularly attend. I flew into Columbus, Ohio, and made the drive eastward to Cambridge on June 23. The glass show actually opened on Friday night, two days later, but my friends assured me that there were plenty of other activities to keep us busy until then.

For example, the very next day on Thursday, there was a large auction of exclusively Cambridge glass being held in town. Most of those that were attending the show on Friday had also arrived in time to attend the auction. The auction was held in order to liquidate the very large collection of Phyllis and the late Bill Smith, who were lifetime collectors of Cambridge. One of the local Cambridge study groups got together and has donated its time and enormous effort in washing, cataloging, packing, and setting up the auction for Phyllis for the last two years. These are the types of people that belong to the NCC, Inc. One of the rarest items included was a decanter in Heatherbloom with the Diane etch, a piece that is quite unusual and hard to find, and which sold for \$650. We attended the auction for a few hours, then it was off to the Riverfront Mall, which is located about 45 miles north of Cambridge. This mall is absolutely enormous and claims to have 86,000 square feet. I believe it too, as we walked the entire thing in a few hours. We were determined to hunt for glass until we dropped, and by the end of the weekend, we had exceeded that goal!

The next day, on Friday, Helen and I decided to drive down to West Virginia, to visit the Fenton factory and take the tour. It is relatively close to Cambridge, and it only took us about an hour to get there. We hadn't planned on making any purchases; it was just a nice way to kill some time.... As we drove up to the factory, we noticed a huge white tent which was set up alongside the Fenton factory, and there were cars and people everywhere. We wondered what in the heck was going on, as we had to park about four blocks away. When we got to the tent, we were told that this was the first day of a five-week clearance sale that Fenton has every year, in order to clear out discontinued items and seconds. People come from all over the country to attend this sale, and Helen

and I just happened to blunder into it. Can you imagine the glee that was in our eyes as we heard that an entire tent that was full of beautiful glass was on sale at prices up to 75% off? You can all guess what happened next: we went into that tent and went nuts! Three hours later we were hot, exhausted, and we made our way back to the car laden with all kinds of gifts and goodies. We never even made it into that factory tour!

We headed back toward Cambridge and made a quick dash into the Bennett Cambridge Museum, which houses more than 5,000 pieces of Cambridge glass. There were all kinds of amazing items in there, and my eyes were glazed over by the time that we left. We then proceeded over to the Pritchard Laughlin Civic Center near downtown Cambridge for the big glass show, which always opens at 4:30 pm on the Friday of the convention. We stood there chatting for about an hour, and the excitement in the room was palpable. Finally, the doors opened and about 500 people literally ran into the room hoping to be the first one to snag a rare and unusual piece of Cambridge. You wouldn't want to stand still in front of that crowd! The show was incredible; it was everything that my friends had described and more. There were pieces of glass there that you truly could not find anywhere else. The prices were certainly not inexpensive, but if you are a collector of Cambridge glass, then you were sure to find something that would appeal to you. I know that I did! Some of the rarest items that I saw were an Ivory Draped Lady priced at \$965, a Royal Blue lamp etched with gold encrusted Diane for \$5,000, an Amethyst 3400 line bowl etched in gold Wildflower for \$1,500, an Amber frosted mannequin head for \$5,000, a Crown Tuscan 3400 line ball jug with gold Rosepoint for \$2,500, and a Carmen cheese & cracker set with gold Diane for \$1,500. Also spotted were two large Moonlight Blue Bashful Charlottes, one frosted and one not frosted, priced at \$1,100 each, and a pair of nude Crown Tuscan candles with gold encrusted Diane bobeches for \$4,000. I made several purchases myself, but the icing on the cake for me was a large pink frosted Draped Lady with a matching pink frosted bowl in the Everglades pattern, and a set of pink frosted candle holders. I fell madly in love with the set, and I could not leave the show without it. I left Cambridge, Ohio, broke but happy; can you say CHARGGGEEEE! It is my fondest hope that I will get to attend the show again next year, that is if my husband ever lets me out of the house again!!!

NATIONAL STUDY GROUP REPORTS

Study Group #16 Elegant Glass Collectors

We are pleased to report that our Tote Bag fundraiser was a great success. It exceeded all expectations. We would like to thank all who helped make the project the success that it turned out to be. And a big thanks to those who purchased all our Tote Bags. For without you, we would not have raised just over \$1100 for the new museum fund. The sad news is that we have no more bags to sell. We are all Sold Out.

—submitted by Bud Walker

~~~~~

## Study Group #14 The Cambridge Cordials

The Cambridge Cordials met June 23-27 at the National Cambridge Collectors Convention. Every event saw Cordials members gathering and discussing the day's happenings. The Friday night dinner gave the group the opportunity to donate money, that had been earned

through various fundraisers, to the new museum fund. Throughout Convention, members continued to sell "Cambridge" T-shirts. Other successful fundraising projects included: a 50/50 drawing, a raffle for an Emerald Green Caprice bowl, and the raffle of a Paul White picture (which had previously been purchased and then generously donated to NCC to raffle for even further assistance to the club). — Thank you, Paul White!

Cordials finished off convention week by sponsoring the Former Workers Reunion on Sunday afternoon. It appeared to be quite successful with a turnout of 42 former workers of The Cambridge Glass Co.

The study group is also happy to have added two new members: Lynne Franks and Pat Janecek.

The Cambridge Cordials' next scheduled meeting is set for October at the home of Rich and Sally Bennett. A group dinner meeting is tentatively scheduled for September.

There is no feeling of justice  
 Needed in the world of song  
 Than the constant chirping of sparrows  
 For the cracked corn thrown on the lawn.  
 The rainwater in the birdbath  
 From the clouds that hid the sun  
 As the children stand at the window  
 Bewailing their outdoor fun.  
 Doesn't seem all crime is punished  
 With an equal dose of pain,  
 Especially since law and lawyers  
 Are twisting retribution insane.  
 Equal pay for equal work  
 Depends on who you are.  
 Who doles out the payroll  
 Comparing muscles and brains at par.  
 If these metaphors offend you  
 Just put it down to the year,  
 The past is in my belfry  
 As another century is near.

*Paul E. White*

### WE CLEAN CLOUDY GLASS! SATISFACTION GUARANTEED

*Yes, it is true that we really can restore the interior of your cruet, vase, decanter and other internally etched items back to near original condition.*

*We do not oil, wax or cover up the sickness in any way! We actually remove it.*

*No items are too sick to clean! If we cannot clean an item to meet your satisfaction, the cleaning is FREE!*

*Send no money up front! When we return your item a bill will be enclosed for the postage and cleaning. If you are not satisfied, only the return postage is requested.*

*Most items clean in 7-8 weeks. All glass is handled and cleaned at your risk. Some very cloudy items may take several additional weeks.*

|                 |              |                   |              |
|-----------------|--------------|-------------------|--------------|
| Cocktail Shaker | \$35.00      | Salt Shaker (1)   | \$25.00      |
| Cologne         | \$27.50      | Salt Shaker (2)   | \$42.50      |
| Cruet           | \$27.50      | Vases (under 10") | \$30-\$35.00 |
| Decanter        | \$35-\$45.00 | Vinegar & Oil     | \$30.00      |
| Lavendar Jar    | \$25-\$35.00 | Water Bottle      | \$30-\$40.00 |

Ship to: Kim Carlisle & Associates  
 28220 Lamong Road, Dept. C  
 Sheridan, IN 46069  
 (317) 758-5767



## CAMBRIDGE GLASS BOOKS FOR SALE

By National Cambridge Collectors, Inc.

### Colors in Cambridge Glass

128 pages, 60 color plates, full index.

Hardbound/valueguide.....19.95

### 1910 Nearcut

108-page reprint of original 1910 catalog. PB w/valueguide.....14.95

### 1930-1934 Cambridge Glass Co. Catalog Reprint

250-page reprint of original catalog. PB w/value guide.....14.95

### 1949-1953 Cambridge Glass Co. Catalog Reprint

300-page B&W reprint of original catalog B&W paperback  
with value guide.....14.95

### Cambridge Caprice

200-page book illustrating one of the most popular lines of Cambridge Glass. Lists color, decorations, reproductions and rare pieces

Paperback with value guide.....19.95

### 1940 - 1941 Cambridge Glass Co. Catalog Reprint

250-page reprint of original catalog and all well known supplemental pages. Drilled, ready for placement in your own three-ring binder. Due to its size, the reprint does not include a value guide. B&W 34.95

### Cambridge Rose Point by Mark Nye

94-page book listing of Rose Point from several sources: catalogs, trade journals, price lists, etching plates, and other surviving company records. One of the most popular lines of The Cambridge Glass Company, showing the many blanks on which Rose Point might be found along with the history and production life of the line. B&W paperback with valueguide.....14.95

### Etchings by Cambridge, Vol. 1 By the Miami Valley Study Group

84-page book showing samples of plate etchings applied by The Cambridge Glass Company. B&W paperback. Due to the style of publication this book does not have a value guide.....14.95

### The Home of "Near-Cut" Factory Post Card

B&W picture of The Cambridge Glass Company post card.....50

### Crystal Lady Video

Approximate 25 minute video copy of old Cambridge Glass Co. film showing the making of a goblet in the Cambridge factory.....15.00

### Rose Point Value Guide (Included with Rose Point Book purchase)

Value guide only, includes postage.....5.00

**N. C. C. Members can purchase the above publications at a 10% discount**

### Other books on Cambridge Glass

#### Cambridge Glass 1927-1929 by Bill and Phyllis Smith

66-page reprint of original catalog. B&W paperback  
with updated value guide.....7.95

#### Cambridge Stemware by Mark A. Nye

167 page book showing as many known Cambridge stems known at the time of publication. B&W paperback. No value guide.....19.95

#### Cambridge Glass Company by Mary, Lyle and Lynn Welker

120 pages of reprints from eight old catalogs. B&W paperback.  
No value guide.....10.00

#### Cambridge, Ohio Glass in Color II by Mary, Lyle and Lynn Welker

15 Color plates showing choice pieces from their collection.  
Spiralbound. No value guide.....5.95

#### Cambridge Glass Company 1903 by Harold & Judy Bennett

106-page reprint of original catalog. B&W paperback N/value guide 5.00

#### Reflections by the Degenhart Paperweight & Glass Museum

45-page book giving a history of all 18 glass companies in Guernsey County. B&W paperback with pictures.....5.00 including postage

address orders to:

Books, National Cambridge Collectors, Inc.

P. O. Box 416

Cambridge, OH 43725-0416

Please add postage and handling to your order (first book, \$3.00; each additional book \$1.00). Ohio residents add 6 1/2% state sales tax.

Only check or money order. NO CASH, NO CHARGE CARDS.

Dealer Discounts Available. Please Write!

## OTHER ITEMS FOR SALE FROM THE NATIONAL CAMBRIDGE COLLECTORS GLASS MUSEUM

### Brochures:

|                    |    |
|--------------------|----|
| Chantilly.....     | 25 |
| Laurel Wreath..... | 10 |
| Lynbrook.....      | 10 |
| Martha.....        | 25 |
| Rondo.....         | 10 |
| Roxbury.....       | 10 |
| Star.....          | 10 |

*Please include SASE for above brochures*

1999 Museum Fund Raising project - Scottie Dog Bookends made in original Cambridge Molds, by Mosser Glass. Made in a moonlight (light) blue color, both in frosted or unfrosted. Marked with N.C.C., date and Mosser logo. Either plain or frosted (Ea. pair) 100.00

Please include \$10.00 shipping and handling.

Ohio residents include \$6.50, per pair, for Ohio State Sales Tax.

The following Convention Favors are marked with the N C C name & yr  
Convention favors

|                                                                 |       |
|-----------------------------------------------------------------|-------|
| 1988 Cobalt, Cambridge Square Cigarette Holder.....             | 2.00  |
| 1994 Crystal Iridized, Cascade Goblet.....                      | 5.00  |
| 1995 Cranberry Ice, Cascade Goblet.....                         | 5.00  |
| 1996 Carnival, Cascade Goblet.....                              | 5.00  |
| 1998 Yellow Iridized, Cascade Goblet.....                       | 5.00  |
| 1999 Crystal, Opal Edge, Cascade Goblet.....                    | 5.00  |
| Prism with "Cambridge" on one side Fund raiser, Mint Julep..... | 15.00 |

Please include \$3.00 shipping & handling on each order of 5 items

### Books by Gene Florence

Hardbound color with value guides

|                                                                  |       |
|------------------------------------------------------------------|-------|
| Very Rare Glassware of the Depression Years (Third Series).....  | 24.95 |
| Very Rare Glassware of the Depression Years (Fourth Series)..... | 24.95 |
| Very Rare Glassware of the Depression Years (Fifth Series).....  | 24.95 |
| Elegant Glassware of the Depression Era (Eighth Edition).....    | 19.95 |
| Collectible Glassware 40s50s60s (Fourth Edition).....            | 19.95 |
| Stemware Identification, featuring Cordials, 1920s-1960s.....    | 24.95 |

Shipping is \$3.00 for first book and \$1.00 for each additional book

Salt & Pepper tops, Polycarbon plastic, will fit most regular sized Cambridge shakers such as Rose Point ftd and flat bottomed shakers. Also fit Heisey Rose, Saturn, Plantation, Crystalite and some Orchid. Fit some Anchor Hocking and Candlewick. made from the same material used to make taillight lenses for autos.

Price: 1 to 9 pairs @ \$6 per pair - 10 or more pairs @ \$5 per pair

Shipping & Handling is \$3.00 per order on S&P tops

Send all orders to:

National Cambridge Collectors, Inc.

P. O. Box 416

Cambridge, Ohio 43725-0416

# ~ GLASS ~ MARKETPLACE

## Classifieds

**WANTED:** CAMBRIDGE SWANS, all types, sizes, and colors including Cambridge swan punch cups. **Contact:** Dale Nash, 1940 Barber Drive, Stoughton, WI 53589. Phone 608-873-9294.

**WANTED:** "Any piece of Cambridge Etch 520, in pink." Please e-mail at [dhmjh@ibm.net](mailto:dhmjh@ibm.net) or phone (714) 538-6656. Thanks. Mary Jane.

**FOR SALE:** Caprice, 7 - #300 tall sherbets, and a Moonlight Blue Caprice ice tongs. 717-367-2879.

**FOR SALE:** PORTIA on Regency stems: 8 wines, \$50.00 each; 4 cocktails \$45.00 each. Plus postage. Barbara Twichell, 121 E. Emerald St., Elkhart, IN 46514 Phone 219-264-5762.

**FOR SALE:** Rose Point stems, 3121, 3500 candy, relish, plates, cream/sugar, salt & pepper and more. List. UPS and insurance extra. Dorothy Godbey, 117 Hearthstone Drive, Fayetteville, NC 2831. 910-867-8922.

**ADVERTISE HERE NOW!**  
You never know who you are missing.

### Bogart's Bed & Breakfast

62 W. Main Street, New Concord  
New Concord lodging in 1830 Federal  
Style home, decorated with  
antiques throughout.



### Bogart's Antiques

7527 E. Pike, Norwich OH  
Quality Antiques Bought & Sold

OWNERS: Jack & Sharon Bogart  
872-3514 or 826-7439

## The DAZE Inc.

**SPECIAL OFFER**  
to NCC friends  
**\$2.00 OFF**  
the 1 year subscription price  
when on this form or copy of it.

The Original National monthly newspaper dedicated to the buying, selling and collecting of American made glassware china, and pottery from this century. We educate and inform you each month with feature articles by top notch writers, readers letters, club happenings, reproduction news, show reports and there are hundreds of dealers to help you fill in the missing pieces of your collection. "Keep up with what's happening" . . . Subscribe today!

Name \_\_\_\_\_  
Street \_\_\_\_\_  
City \_\_\_\_\_  
State \_\_\_\_\_ Zip \_\_\_\_\_  
 1 year \$21.00    2 years \$40.00    \$2.00 Single Copy  
**Subscription Hot Line: 1-800-336-9927**  
Exp. Date \_\_\_\_\_ Card No. \_\_\_\_\_  
Signature \_\_\_\_\_

**Orders to:**

**The Daze, Inc., Box 57, Otisville, MI 48463**  
Please allow 30 days for your first issue - Canadian Subscribers, add \$1.00 per year and subscribe by charge card only! This Special Offer may not be combined with any other special offer.  
Offer Expires December 31, 1998



## Stems Without Thorns

As the world's largest supplier of discontinued and active china, crystal, flatware and collectibles, Replacements, Ltd. has over 325 different patterns of Cambridge crystal.

And however much we enjoy selling pieces which were once thought irreplaceable, we love buying them as well. Thanks to people like you, our crystal inventory currently numbers in the hundreds of thousands, and the numbers keep growing every year.

So, if you've been unsuccessfully searching for that elusive piece of Cambridge - or any other type of fine crystal - call us for a free list of pieces available in your pattern. And, if you're looking to sell pieces you currently have, we can help you there, too.

## REPLACEMENTS, LTD.

China, Crystal & Flatware • Discontinued & Active

**1-800-REPLACE**  
(1-800-737-5223)

1089 Knox Road,  
PO Box 26029, Dept. CB,  
Greensboro, NC 27420



# DEALERS



# DIRECTORY

NOTE: When writing to the dealers listed here, please enclose a SASE!

|                                                                                                                                                                                                                                                                                               |                                                                                                                                                                                                           |                                                                                                                                                                                                                                       |
|-----------------------------------------------------------------------------------------------------------------------------------------------------------------------------------------------------------------------------------------------------------------------------------------------|-----------------------------------------------------------------------------------------------------------------------------------------------------------------------------------------------------------|---------------------------------------------------------------------------------------------------------------------------------------------------------------------------------------------------------------------------------------|
| <p><b>DAUGHERTY'S ANTIQUES</b><br/>Jerry and Shirley</p> <p>Antiques and Collectibles * Mostly Glass</p> <p>Shows &amp; Mail Orders 2515 Cheshire No<br/>402-423-7426 Evenings Lincoln NE 68512</p>                                                                                           | <p><b>YOU CAN ADVERTISE YOUR ANTIQUE SHOP HERE!</b></p>                                                                                                                                                   | <p><b>THE JONES GROUP</b><br/>Cindy Jones</p> <p>Buy and Sell Cambridge Glass<br/>650 Riverside Drive<br/>Sleepy Hollow, NY 10591<br/>914-631-1656 or E-Mail Caprice0@aol.com</p>                                                     |
| <p><b>Milbra's Crystal</b><br/>Replacement and Matching</p> <p>Buy &amp; Sell<br/>Specializing in<br/>Cambridge<br/>Fostoria<br/>Heisey<br/>and others</p> <p>Milbra Long (817) 645-6066<br/>Emily Seate (817) 294-9837<br/>PO Box 784, Cleburne, TX 76033<br/>E-mail: longseat@flash.net</p> | <p><b>CRYSTALLINE COLORS</b><br/>Buy, Sell, and Appreciate<br/>Cambridge and Other Elegant Glass<br/>I Love Cambridge</p> <p>Lynne R. Franks 216-661-7382<br/>Ohio &amp; Western PA Antique Malls</p>     | <p><b>MARY JANE'S ANTIQUES</b><br/>Mary Jane Humes</p> <p>2653 Burgener Dr., Decatur, IL 62521<br/>Depression Era Items<br/>Cambridge and Other Elegant Glass<br/>mjhumes@aol.com 217 422 5453</p>                                    |
| <p><b>THE GLASS URN</b><br/>456 West Main Street, Suite G<br/>Mesa, AZ 85201 602-833-2702</p> <p>Mail Order Shows Open Shop</p> <p>CAMBRIDGE, FOSTORIA, HEISEY, ETC.</p>                                                                                                                      | <p><b>YOU CAN ADVERTISE YOUR ANTIQUE SHOP HERE!</b></p>                                                                                                                                                   | <p><b>GATEWAY ANTIQUE MALL, INC.</b><br/>JUST NW OF MINNEAPOLIS-ST. PAUL MN<br/>Next to Super 8 in Rogers, MN<br/>(I-94/101 Intersection)</p> <p>85 Dealers 7 Days, 10-6 612-428-8286<br/>ELAINE STORCK, OWNER/DIRECTOR</p>           |
| <p><b>THE DEGENHART PAPERWEIGHT AND GLASS MUSEUM, INC.</b></p> <p>P O Box 186<br/>Cambridge, Ohio 43725-0186<br/>Intersection of US 22 &amp; I 77<br/>Phone 740-432-2626</p>                                                                                                                  | <p><b>D &amp; D ANTIQUES</b><br/>Columbus, Ohio</p> <p>Dick Slifko SHOWS ONLY</p>                                                                                                                         | <p><b>JAMESTOWN ANTIQUES</b><br/>16 E Washington St., Jamestown, OH 45335<br/>Rosepoint and Cambridge our Specialty</p> <p>Buy (937) 675-6491 Sell<br/>Susan and Larry Everett</p>                                                    |
| <p><b>THE GLASS CUPBOARD</b></p> <p>P O. Box 652<br/>West End, North Carolina 27376</p> <p>Marcia Ellis Cambridge, Heisey<br/>910-673-2884 Shows, Mail Order</p>                                                                                                                              | <p><b>JUDY'S ANTIQUES</b><br/>Judy Bennett<br/>422 S. Ninth Street (Corner of Jefferson)<br/>Cambridge, Ohio 43725<br/>Bus 740-432-5855<br/>Res 740-432-3045</p> <p>CAMBRIDGE GLASS MY SPECIALTY</p>      | <p><b>Horse'n Around Antiques</b><br/>Kelvin and Heather Moore<br/>Exit 69 on Interstate 64<br/>Woodlawn, IL 62898<br/>e-mail hmoore@midwest.net<br/>TEL: 618-735-9114</p> <p>Specializing in Cambridge and other Elegant Glass</p>   |
| <p><b>FINDER'S ANTIQUE HOUSE</b><br/>3769 Highway 29 North<br/>Danville, VA 24540<br/>(804) 836-6782<br/>Cambridge-Heisey-Duncan-Fostoria</p>                                                                                                                                                 | <p><b>GREEN ACRES FARM</b><br/>2678 Hazelton Etna Rd., Pataskala, OH 43062<br/>(State Route 310 North)</p> <p>Sat &amp; Sun 1-7 PM 740-927-1882<br/>Antiques, Crystal Glass and Collectibles</p>          | <p><b>CRYSTAL LADY</b><br/>1817 Vinton St., Omaha, NE 68108</p> <p>Bill, Joann, and Marcie Hagerty<br/>Bus 402-341-0643 Res 402-391-6730<br/>Specializing in Elegant Glass &amp; Collectibles</p>                                     |
| <p><b>YOU CAN ADVERTISE YOUR ANTIQUE SHOP HERE!</b></p>                                                                                                                                                                                                                                       | <p><b>YOU CAN ADVERTISE YOUR ANTIQUE SHOP HERE!</b></p>                                                                                                                                                   | <p><b>PENNY COURT MALL</b><br/>637 Wheeling Avenue<br/>Cambridge, Ohio<br/>100 Booths 15,000 sq. ft.<br/>HOURS Daily 10-6 Sunday Noon-5<br/>Closed: Easter, Thanksgiving, Christmas<br/>Call for Other Holiday Hours 740-432-4369</p> |
| <p><b>MICHAEL KRUMME</b><br/>Cambridge and other elegant glassware</p> <p>(213) 874-GLASS e-mail: mkrumme@pacbell.net<br/>website: http://www.glassshow.com</p> <p>PO Box 48225<br/>Los Angeles CA 90048-0225 Send your want list</p>                                                         | <p><b>Warren and Mary Welsh</b><br/>Cambridge &amp; Other Elegant Glassware</p> <p>3635 Saddle Rock Rd., Colorado Springs, CO 80918<br/>(719) 531-5866<br/>WELS@EARTHLINK.NET</p> <p>MAIL ORDER SHOWS</p> | <p><b>MARGARET LANE ANTIQUES</b></p> <p>2 E. Main St., New Concord, OH 43762<br/>Lynn Welker 740-826-7414</p> <p>Cambridge Glass Matching Service<br/>Hours Mon-Fri 10-12 AM, 1-5 PM or by Appointment</p>                            |
| <p><b>ISAACS ANTIQUES</b><br/>(740) 826-4015</p> <p>See our booths in Penny Court Mall in Cambridge and White Pillars Antique Mall at Rt. 40, one mile west of I-70 Norwich Exit #164</p>                                                                                                     | <p><b>ALADDIN LAMP BOOKS</b><br/>Free List<br/>Figurine Lamps Wanted<br/>Bill &amp; Treva Courter</p> <p>3935 Kelley Rd. Kevill, KY 42053<br/>Phone/FAX 502-488-2116</p>                                  | <p><b>DEXTER CITY ANTIQUE MALL</b></p> <p>P. O. Box 70, Dexter City, Ohio 45727<br/>(740) 783-5921</p> <p>Located on Ohio St. Rt. 821<br/>Between Exits 16 &amp; 25 off I-77<br/>Just 30 min. South of Cambridge, Ohio</p>            |



**SEND  
AUCTION  
LISTS  
NOW**

**(SEE PAGE 4)**



**PLAN NOW  
to  
Attend the  
November  
Quarterly  
Meeting**

**(SEE PAGE 3)**

---

**National Cambridge Collectors Inc**  
**PO Box 416**  
**Cambridge OH 43725-0416**  
<http://www.cambridgeglass.org>  
e-mail: [NCC\\_Crystal\\_Ball@compuserve.com](mailto:NCC_Crystal_Ball@compuserve.com)

---

FIRST CLASS MAIL  
U.S. POSTAGE  
PAID  
PERMIT NO. 1  
CAMBRIDGE, OH

---

**FIRST CLASS MAIL**

*Membership Renewal Notice*

**If the date on your address label is 9-99,  
this is your LAST ISSUE of the Crystal Ball.**  
Please take a moment and renew now. Thank you!