



# Cambridge Crystal Ball

Published monthly by the National Cambridge Collectors, Inc.  
to encourage and report the discovery of the elegant and boundless product  
of the Cambridge Glass Company of Cambridge, Ohio

Issue No. 185

September 1988

## From The President's Desk

One of the most difficult things to do, is to write an article, four to six weeks before publication, that will be timely when it is published. By the time you read this, the annual picnic will be history, school will be starting in a few days, and the first frost, for many of you will not be far away. Yet, as I write this (August 1st) the country is in the middle of a heat wave, temperatures are soaring, with records being broken every day, and I have not yet left Miami for the N.C.C. picnic. Speaking of high temperatures, I was in Chicago in mid-July with the thermometer registering 105 degrees - I was anxious to return to Miami where it was a cool 90!

Believe me, it is hard to think about Fall and what it will bring, when you still have a great deal of summer to get through; and summer in South Florida can mean hurricanes. Imagine what a hurricane could do to a Cambridge collection. At least we can prepare for the worse, while those of you who must deal with tornadoes and earthquakes, usually have no warning whatsoever.

It would seem the first qualification for the office of N.C.C. President is a cluttered desk. You have heard about Willard's desk from the man himself - I have seen the desk of his predecessor - and I can assure you mine is no exception. I usually do, however, know where everything is, be it in an orderly or disorderly stack! So, I say to all N.C.C. members with cluttered,

messy desks . . . one of you will be my successor!

Under the leadership of Willard, N.C.C. saw our dream of a Museum become a reality and the acquisition of much Cambridge Glass Company material, molds, tools and paper. One of our two most visible assets is the Museum (the other being the CRYSTAL BALL) and I can tell you that during my term as N.C.C. President, I will be putting great emphasis on the Museum; looking for ways to increase attendance, on expansion of the club owned collection, enlargement of the Museum facility itself, and finally enlarging the displays.

Second, everyone recognizes the need to catalog all of the tools, molds, etc., that were purchased during the Imperial liquidation. I will also be working toward this goal and as a result have created a special committee, currently known as Non-Glass Items, to be headed this year by J.D. Hanes and Cindy Arent, to oversee this monumental task. Anyone wishing to serve on this committee or just plain work, contact either of these individuals.

During the coming months your Board of Directors will be discussing ways to achieve these goals. Your input and suggestions will be welcomed. My telephone number is published elsewhere, and since I have been known to stray from home on

continued on page 8

# Cambridge Crystal Ball

Official publication of National Cambridge Collectors, Inc., a non-profit corporation with tax exempt status. Published once a month for the benefit of its members.

Membership is available for individual members at \$13 per year and additional members (12 years of age and residing in household) at \$3 each. All members have voting rights, but only one *Crystal Ball* will be mailed per household.

Back issues of the *Crystal Ball* are available (beginning with Issue No. 1, May 1973) for members only. Cost: 60 cents each or 12 issues for \$7.

## 1988-89 OFFICERS & COMMITTEE CHAIRPERSONS

President.....	Mark A. Nye
Vice-President.....	Cynthia A. Arent
Secretary.....	J.D. Hanes
Treasurer.....	William C. Smith
Sergeant-at-Arms.....	Marlene K. Snyder
Acquisition.....	Lynn Welker, Bill Smith, Mark Nye, Joy McFadden, J.D. Hanes
Budget & Finance.....	David B. Rankin
By-Laws.....	J.D. Hanes
Convention.....	Mark A. Nye
Membership.....	Phyllis D. Smith
Museum - Facilities.....	Willard P. Kolb
Museum - Interior.....	Lynn Welker, Janice Hughes, Marybelle Moorehead
Non-Glass Items.....	J.D. Hanes, Cindy Arent
Nominating.....	Willard P. Kolb
Program.....	R. Clarke West
Project.....	William C. Smith
Publicity.....	Cynthia A. Arent
Public Relations.....	Bill & Phyllis Smith
Study Group Advisor.....	Phyllis D. Smith
1989 Auction.....	Lynn M. Welker
1989 Antique Show.....	Joy R. McFadden
1989 Flea Market.....	Marybelle Moorehead
CRYSTAL BALL Editor.....	Phyllis D. Smith

## Classified Advertising Rates

10 cents per word \$ 2.00 minimum  
We cannot mix type size in classified advertisements. Abbreviations and initials will count as words. Payment in full must accompany all ads.

## Display Advertising Rates

(Camera-ready ads preferred)	Members	Non-Members
1/8 page (9 items) .....	\$ 6.00	\$ 10.00
1/4 page (20 items) .....	10.00	15.00
1/2 page (20 items) .....	18.00	25.00
3/4 page .....	25.00	35.00
Full page (50 items) .....	33.00	45.00

## Dealers Directory

Five-line maximum ..... \$18.00 for 12 months

Cambridge *Crystal Ball* assumes no responsibility for items advertised and will not be responsible for errors in price, description or other information.

*Advertising copy, articles, club news and notices must be in our hands by the 10th of each month to assure publication in our next issue.*

Paid advertisements containing reproductions or new glass will not knowingly be accepted for publication.

Opinions or information stated in any signed article or letter printed in the *Crystal Ball* are those of the authors and may or may not agree with National Cambridge Collectors, Inc. The Editor reserves the right to refuse and to edit any material submitted for publication so as to conform with the editorial style of the *Crystal Ball*.

NCC Museum of Cambridge Glass is located on U.S. Route 40, one-eighth mile east of I-77 near Cambridge. Hours: 12 noon to 4 p.m., Wednesday through Sunday (March through October).  
Closed Easter and July 4th.

Please notify us immediately of any change in your address.

Please enclose an SASE when requesting information.

## Please Address All Correspondence to:

National Cambridge Collectors, Inc.  
P.O. Box 416 Cambridge, Ohio 43725

President -- Mark A. Nye, 305/331-0343  
Secretary -- J.D. Hanes, 614/432-6794  
Editor -- Phyllis D. Smith, 513/323-3888

# CAMBRIDGE GLASS BOOKS FOR SALE

by National Cambridge Collectors, Inc.

\* **COLORS IN CAMBRIDGE GLASS**  
(128 pages - 60 color plates - fully indexed)  
Hardbound with Price Guide \$19.95

\* **1930-34 CAMBRIDGE GLASS CO. CATALOG REPRINT**  
(250 page reprint of original catalog)  
Hardbound with Price Guide \$14.95

\* **1956-58 CAMBRIDGE GLASS CO. CATALOG REPRINT**  
(164 page reprint of original catalog)  
Paperback \$6.95

**1985 COMBINED PRICE GUIDE**  
for 1930-34 & 1949-53 catalog reprints Postpaid \$5.75

\*NCC MEMBERS ONLY: *These publications are available at 10% discount*

by Bill & Phyllis Smith

**CAMBRIDGE GLASS 1927-1929**  
(66 page reprint of original catalog)  
Paperback with Identification Guide \$7.95

by Mark Nye

**CAMBRIDGE STEMWARE**  
(95 Stemware lines with 107 illustrations)  
Paperback \$14.95

by Cambridge Buffs Study Group

**NEARCUT**  
(108 page reprint of 1910 Cambridge Catalog)  
Paperback with Price Guide \$9.95

by Mary, Lyle and Lynn Welker

**CAMBRIDGE GLASS CO.**  
(120 pages of reprint from 8 old catalogs)  
Paperback \$6.95

**CAMBRIDGE, OHIO GLASS IN COLOR II**  
Spiralbound \$5.95

by Harold and Judy Bennett

**1903 CAMBRIDGE GLASS CO. CATALOG REPRINT**  
(106 page reprint of an original catalog)  
Paperback \$7.50

Address your orders to:

**BOOKS**  
National Cambridge Collectors, Inc.  
P.O. Box 416  
Cambridge, OH 43725

Please add \$1.00 (P & I) per order.

(Not required for Price Guide)

Ohio residents please add 6% state sales tax.

**DEALER DISCOUNTS AVAILABLE - PLEASE WRITE!**

**MUSEUM Telephone Number**  
**614-432-4245**

# News from Cambridge -- Via postcard!

by JAMES S. MEASELL

I hope my friends in the National Cambridge Collectors club will be pleased to learn about this interesting postcard. If you've ever written a quickly-scribbled note with some recent news, you can probably relate to this postcard.

This card is postmarked August 6, 1907, from Cambridge. It is addressed to John N. Klintworth, Jr., Ninth St., Marietta, Ohio.

The "picture" side of the card contains a vignette of the Cambridge Glass Company and Nearcut glass is mentioned as are two designs, Lotus and Marjorie. The firm's President, Arthur J. Bennett, is listed in the lower left corner.

Secretary-Treasurer G. Roy Boyd's name was printed in the lower right corner, but the writer of this post card has crossed out Boyd's name and written "Geo. W. Dewey" above it. A handwritten message appears along the left edge of the card: "Say John, this is our new place. What do you think of it? Your coz. (this is a common abbreviation for "cousin") Catherine Dewey."

The purpose of this card

seems obvious. Catherine Dewey, who was likely the wife of George W. Dewey, was letting her cousin John in Marietta know that she had moved to Cambridge and that her husband George had been named an officer in the Cambridge Glass Company.

leaving Cambridge to oversee the Crystal Glass Works in Bridgeport.

The Daily Jeffersonian for July 2, 1909 provides some further details: "George W. Dewey has resigned as treasurer of the Cambridge Glass

Company and expects to leave in a short time for Oklahoma where he will be associated with his father-in-law, who is engaged extensively in the oil business. Mr. Dewey has been connected with the Cambridge Glass company for two years and has

proven very efficient in the important position which he has held. He has made many friends in and out of the office who will regret to have him leave Cambridge.

The position of treasurer has been filled by G. Roy Boyd, former secretary-treasurer of the same company and later president and manager of a large glass company at Martins Ferry, Ohio. The difficulties which the National Glass Company later encountered, let Mr. Boyd out of his position, and the local company is very fortunate to again secure his services. The

continued on page 8



Phyllis and Bill Smith tell me that they're familiar with George W. Dewey from other company records, so this card may serve to pinpoint the time he joined the firm. Of course, it also recalls those times in the United States when cousins (and families) tended to keep in touch via frequent letters and postcards.

China, Glass and Lamps for January 20, 1908, mentions George W. Dewey as Treasurer of the firm. A few earlier records (Crockery and Glass Journal, May 9, 1907, and the Cambridge Daily Jeffersonian for July 25, 1907) indicate that Boyd had been promoted within the National Glass Co.,

# OPAQUE COLORS

by MARK A. NYE

The December 15, 1921 issue of "Crockery and Glass Journal" contained within its pages, the following:

"We invite you to visit our Display in Room 728 of the Fort Pitt Hotel, Pittsburgh, Pa., during the Annual Glass Exhibition January 9th to 28th inclusive.

As usual we will show you new ideas and novelties in glass."

This simple invitation to the 1922 Pittsburgh show gave little hint that a new era was about to begin at Cambridge . . . the years of the Opaque Colors!

This is what "China, Glass and Lamps" had to say, on January 23, 1922, about the first of the new opaques, Azurite, and the reintroduction of Ebony, under the headline:

## "CAMBRIDGE GLASS CO."

"A new shade of colored glassware, which has been the cause of much favorable comment is the 'Azurite' introduced for the first time by the Cambridge Glass Co., Cambridge, O., in room 728 at the Fort Pitt. It is a full-body blue not unlike Harding blue. Another new line from this factory is called the 'Ebony.' It is a very black and represents an achievement in this class of glassware. Both new colors come in complete tableware lines, including vases, candlesticks, bowls, candy-jars, compotes and cheese and cracker plates.

In addition to the plain 'Azurite,' the ware is being offered in two shades of double lustre, with four patterns in gold encrustations and in combination with two contrasting colors used for lines and reliefs. The gold-encrustation patterns on 'Azurite' bodies are most attractive. In fact, the entire line is beautifully conceived and executed. An especially appealing decoration is that of black peacocks and dragons on the blue body. The peacocks and dragons also are shown in a contrasting shade of green, which, contrary to what might be expected, does not clash with the blue.

On the gold-encrusted 'Azurite' ware, the Cambridge Glass Co. has placed a gold label bearing the wording: 'Cambridge Art Glass, Ohio, U.S.A.'"



Photo above is taken from Smith's "Cambridge Glass 1927-1929" book - a catalog reprint.

In the book "Colors in Cambridge Glass" published by the N.C.C., Inc., the color Azurite is described thusly:

" . . . which is a light blue opaque that will often show some variation in the color of a given item. Some areas may show streaking that is almost white and other areas may show a little darker color."

The statement is also made that "Occasionally pieces will be found that have been given either a brown or green enamel spray as a decorative treatment." Later an Azurite 8-1/4" footed bowl with purple iridescence on the outside and signed with the triangle C in black enamel, is shown.

Ebony had been first seen in the Cambridge line during 1916 and thus, even though the trade journal article was claiming it to be a new color, it was in fact, only a reintroduction. Cambridge Ebony was probably first seen outside of the factory, at the January 1916 Pittsburgh trade show.

"A line of special items in decorated black glass is proving a strong attraction at the showroom of the Cambridge Glass Company, where manager D. King Irwin has made a very attractive exhibit of the ware. The assortment is made up of flower bowls in several styles, vases, ash receivers, tobacco jars, candlesticks, flower blocks, a combination fruit and flower bowl, and many other pieces. The line is decidedly distinctive in the shapes as well as in the beautiful decoration employed, the latter being a heavy enamel continuous floral border treatment cleverly com-

continued on next page

OPAQUE COLORS . . . . . continued

bining yellow and pink roses interspersed with leaves. The same pattern and coloring are also used very effectively in an all over treatment."

The preceding is taken from "Crockery and Glass Journal", March 2, 1916.

Later in the year, this paragraph appeared in "China, Glass and Lamps":

"The Cambridge Glass Co., of which George Spinney is manager of the Chicago branch, has been one of the most successful in the campaign for black glass. Possibly this is because Mr. Spinney has more or less concentrated on this line. Many of the other concerns, of course, have strong lines of black glass, and all of them are enjoying a strong patronage at the present time. There is every indication that black glass has not reached the zenith of popularity, and this fall should see the booking of heavy orders in all markets."

Returning to 1922, and Azurite, in March, "China, Glass and Lamps" had this to say:

"Of first consideration is 'Azurite' a sky blue glass of most odd and attractive solid color. Vases, bowls, comports, candle sticks, etc., are some of the items of this popular line which also comes in gold encrustations with various decorations and also with a brown iridescent finish. 'Azurite' also comes decorated in green, and brown with deep etched borders, a most delicate offering."

In the fall of 1922, "Crockery and Glass Journal" published this statement regarding Ebony:

" . . . and include a full line of fancies in ebony glass richly decorated with gold encrustations. One decoration consists of a 1/4" border in a finely executed laurel wreath treatment and gold edge band and foot. In another decoration, a 1" border encrustation effectively employs a conventional rose design in combination with the gold edge band. The shapes are artistic and graceful and the items embrace all the popular articles in fancies, such as candlesticks, fruit and flower bowls, high foot comports, vases, and cheese and cracker sets."

January 1923 saw three new colors in Room 728 of the Fort Pitt Hotel. Quoting again from "China, Glass and Lamps":

"Leading the offerings in colored ware -- and the color runs clear through as it is a body color -- are the new 'Primrose Yellow,' 'Helio' and 'Carrara.' In color selections and shapes as well as choice of decorations, the new colors are worthy of the Cambridge line.

The 'Primrose Yellow' is just what the name implies, a yellow of warmth and volume but not extreme. There is a great variety of shapes ranging from small vases to vases suitable for lamp bases. There are several decorations in gold and also in white gold. The latter is somewhat of an innovation. It has the appearance of silver, but, unlike silver, it does not tarnish. There are also several narrow band decorations in green, blue and black treatment.

'Helio' is the name of an exceptionally attractive color. It is of the purple family, but delicate in tone and very rich in appearance. The shapes in this color are extensive in number and there is a choice of decorations as wide as that in the 'Azurite' and 'Primrose Yellow.'

The 'Carrara' is a brilliant white and stands in strong contrast to the deep-black 'Ebony.' This colored ware is especially attractive with gold decorations and a number of ideas in this connection are shown. A large number of new pieces have been added to the 'Ebony' line, making this line one of the most extensive ever offered to the trade."

There is some evidence that indicates Carrara was actually brought out in 1922, not in 1923 as the preceding states. In the May 18, 1922 issue of "Crockery and Glass Journal" the following statement was published:

"Another line which is attracting a good deal of attention is the company's (Cambridge Glass Co.) 'Carrara' ware, in translucent white and encrusted gold, comprising a variety of items which form the fancy lines, with bowls obtainable with ebony glass bases."

---

EDITOR'S NOTE: This article is to be continued in the October, 1988, issue of the Cambridge CRYSTAL BALL.

---

# Club News

---

National Cambridge Collectors, Inc.  
Quarterly Meeting  
August 6, 1988  
N.C.C. Museum, Cambridge, Ohio

The meeting was called to order at 1:15 pm by President Nye. In attendance were 12 Board members and 35 Club members.

The minutes of the previous meeting held on June 26, 1988 were read by J.D. Hanes and approved.

The Treasurer's report was given by Bill Smith showing the Operating Equity is \$22,590 and the Museum Equity \$129,944 as of July 31, 1988. He also stated that we are a little better financially than at this time last year.

## COMMITTEE REPORTS

**BUDGET & FINANCE:** No report.

**BY-LAWS:** No report.

**CONVENTION:** Chairman Mark Nye reported that the Convention would be June 22 - 25, 1989.

**CRYSTAL BALL:** Editor Phyllis Smith reported that the September issue would be mailed on time.

**MEMBERSHIP:** Chairman Phyllis Smith reported that we now have 1,263 members.

**PUBLIC RELATIONS:** Chairman Bill Smith reported that they would be at the Lakeland, Florida Show in September and that Mark Nye would be doing a display at that show. They will be at the Central Michigan Show in Dearborn, Michigan in October. They will also be at the Western Reserve Show in Cleveland, Ohio in October. President Nye reported that he gave three seminars on Cambridge glass at the N.D.G.A Show in Denver.

**STUDY GROUP ADVISORY:** Chairman Phyllis Smith reported that we now have two new approved Study Groups. The Miami Valley Study Group, and the Cambridge Cordials Study Group.

**PUBLICITY:** No report.

**MUSEUM INTERIOR:** No report.

**MUSEUM FACILITIES:** No report.

**AUCTION:** Chairman Lynn Welker reported he would be accepting lists of glass from September 1st to October 1st. He restated that this is lists only. The Auction preview will be on February 24, 1989 at the Quarterly meeting, and the Auction will be on February 25, 1989. Both to be at the Shenandoah Inn.

**ANTIQUÉ SHOW:** No report.

**FLEA MARKET:** Chairman Marybelle Moorehead reported that the Flea Market will be held in the same location next year.

**OLD BUSINESS:** President Nye reported that the Board of Directors had decided not to raise the membership fees at this time.

Bill Smith reported that the advertising rates in the CRYSTAL BALL had been raised by 50%. Editor Phyllis Smith stated that any advertising received after September 10, 1988, will be charged the new rates.

President Nye asked for authors for articles for the CRYSTAL BALL.

**NEW BUSINESS:** President Nye stated that he has formed a new committee called the Non-Glass Items committee. This committee will be in charge of the cleaning and the inventory of the molds, snaps, tools, etc., in the storage building. Cindy Arent and J.D. Hanes are the chairpersons for this committee. He stated that if anyone wished to volunteer, they should contact either of them.

Janice Hughes asked for volunteers to help wash the glass in the Museum this winter.

A drawing was held for door prizes. The winners were Phyllis Smith and Carl Beynon. The prizes were passes for two, for the Living Word Outdoor drama.

A motion was made by Doyle Hanes to adjourn at 1:35 pm. Motion carried.

The next meeting will be held on November 5, 1988.

J.D. Hanes, Secretary

---

# Study Club News

---

## STUDY GROUP #13 - SOUTH WEST OHIO MIAMI VALLEY (OHIO)

The newly formed Miami Valley Study Group will hold their 3rd meeting on Tuesday, September 13th, at the Huber Heights Public Library, 6363 Brandt Pike, Huber Heights, Ohio (State Route #201). There is plenty of free parking.

Interested N.C.C. members living in the Dayton/Springfield and surrounding area are cordially invited to attend this meeting. The meeting starts at 7 pm and ends promptly at 8:30 pm (the library closes at that time).

---

## STUDY GROUP #14 - CAMBRIDGE, OHIO "THE CAMBRIDGE CORDIALS"

Contact person - Judy Monirov  
Phone: 614/432-2896

The brand new Cambridge Cordials Study Group held their 1st meeting on Saturday evening, July 30th, in the home of Mike and Cindy Arent, Cambridge, Ohio. There were eleven members and two guests in attendance.

This was an organizational meeting to fill out our application to the National Cambridge Collectors, Inc. We worked out a meeting schedule and meetings will be held on the 3rd Saturday of the month.

If our application is approved as a recognized Study Group, we are checking into holding the next meeting at the N.C.C. Museum.

Names for the group were discussed and narrowed from a list of twenty, down to three. We then held a secret ballot for the name and the winner was "The Cambridge Cordials."

Other topics discussed, were what directions to take for the group. We used the guidelines given to us by the Study Group Advisory Committee.

After the meeting we viewed Cindy and Mike's collection of Cambridge glass; and refreshments were served.

submitted by J.D. Hanes

---

## INTERESTED IN NEW OHIO STUDY GROUP? YOUNGSTOWN - AKRON - CANTON AREA

N.C.C. member Margaret Diver would like to form a new N.C.C. Study group in the Youngstown/Akron/Canton, Ohio, area.

Any members living in this area who would be interested in belonging to this group, please phone Margie at: 216/547-3931 - after 7 pm.

---

### IN MEMORIAM

"The clock of Life is wound but once  
And no man has the power  
To say just when the hands will stop  
At late or early hour.  
Now is the only time we have,  
Live, love, work and with a will  
Place no faith in to-morrow for  
The clock may then be still."

---

BERNARD C. BOYD  
August 5, 1988

Bernard Boyd was a prominent glass manufacturer and the owner of Boyd's Crystal Art Glass, Cambridge, Ohio. Mr. Boyd was 80 years of age. Our sincere sympathy is hereby expressed to his wife Louise, their entire family and many friends.

---

PORTIA W. OLDHAM  
July 31, 1988

Portia and her husband Morris have been members of N.C.C. for many years. They made their home in Annapolis, Maryland. It is with great sorrow that we extend out sympathy to Morris, their children and additional family members and friends.

---

WILLIAM HEACOCK  
August, 1988

William Heacock was the author of several books on Fenton and other glassware. Born in Texas, in August 1947, he has recently made his home in Pennsylvania. This young man was loved by those of us involved in the world of glass collecting, and will be greatly missed. Our deepest sympathy is hereby extended to his family and friends alike.

VIA POSTCARD.....continued from page 3

company's organization is now practically the same as existed before Mr. Boyd was transferred."

Now comes my big question: Did the Cambridge Glass Company commission new postcards in 1907, with George Dewey's name printed on them in place of Boyd? These should be postmarked between late 1907, perhaps, and mid-1909. If you have such a card (or other interesting glass factory postcards of any kind), I'd like to hear from you. Send me a postcard!! My address is: Box 72-1052, Berkley, MI 48072.

---

EDITOR'S NOTE: Our "Thanks" to Dr. Measell for sharing this article with us. Dr. James S. Measell is a professor in the Department of Speech Communication, Theatre and Journalism at Wayne State University in Detroit, Michigan. He is also a noted authority on Greentown Glass and has written many articles and books on this subject. He is a collector of "things" related to the collecting of "glass." In 1982, we were privileged to have Dr. Measell as our Convention Banquet speaker and his topic was "There's More to Glass Collecting than just Collecting Glass." It is our great pleasure that he continues to share his interest in glass collecting with us in the form of an occasional article. If ever you have the opportunity to hear Dr. Measell speak, be sure that you do not miss it. He has a wonderful and humorous "way with words!"

---

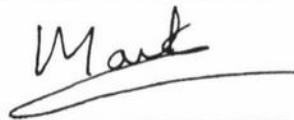
---

PRESIDENT'S DESK . . continued from page 1

occasion, my telephone will shortly, if necessary, be answered by a machine! I do however, promise to return all calls and not have my machine call your machine.

One of the topics to be discussed at the August Board meeting is a method of recognizing and acknowledging, in the Museum, Memorial gifts. I feel that this is one means of encouraging gifts to the Museum, especially when they are publicly acknowledged and identified. The outcome of that discussion will be published in the October CRYSTAL BALL.

Until next month,  
Collect Cambridge!



## YOUR HELP IS NEEDED!

Our new Secretary, J.D. Hanes is off to a great start and is doing an excellent job in his new position. It is no easy task trying to follow in the footsteps of Janice Hughes (our secretary for the past thirteen years) and he is to be commended for the smooth transition.

However, being new on the job, he does need a little help from you - our members. When you send in your check for membership renewal, advertising, donations, book purchases, or whatever - won't you PLEASE send along a little note indicating what the monies are for. He is not yet familiar with all your names, etc., and it would make it so much easier for him this way.

Your help in this matter will be greatly appreciated. When J.D. has been on the job, as many years as Janice, he will undoubtedly know everyone by name, etc., . . . but in the meantime please help him out! THANKS!

---

---

### On the Sick List

We always regret when we must report that some of our members are not up to snuff, but we know you are interested.

---

As many of you know, our good friend Evelyn Allen was not in her usual spot at our Antique Show this year. This was a first for her -- and we sincerely hope it will be the last one she has to miss. She has been ill and in and out of the hospital this past year. At present she is back home and doing better. We all wish you a speedy recovery Evelyn!

---

Another good friend and longtime member of N.C.C., Leonard Weinberg from White Plains, NY, is also not feeling up to par. He has entered the Burke Rehabilitation Center in White Plains and his wife Marge tells us that he is showing improvement every day. We wish you a speedy recovery also Len!

---

If you would care to send either of these nice folks a card or note, please sent it to our club address and we will be happy to forward it to them. - - - - Oh yes, your editor's cataract surgery was a great success! Thanks for all your cards and best wishes.

---

---



# Convention Postscript

by MARK A. NYE

First, I want to thank those people attending the 1988 N.C.C. Convention who took the time to complete their evaluation form. Each one is read and all suggestions are evaluated. Obviously, each suggested convention theme can't be used, but where possible suggested ideas will be used as the basis for future articles in the CRYSTAL BALL.

While the theme for next year's convention has not yet been finalized, there is a good chance it will be one of the ideas suggested. However, before the subject becomes 1989, just a few more words about the 1988 convention; specifically, I want to address some of the submitted comments. There will be no specific order, just the order in which the forms got stacked on my desk.

While no plans have been made for the 1989 convention, We do intend to keep the silent auction on Thursday night and hope it can be expanded.

We need more people like the individual who wrote, "I seem to enjoy each convention more than the last, and getting involved is certainly the key. Thank you for the opportunity."

A suggestion that pictures should be taken at the annual Show & Tell and published in the CRYSTAL BALL. An excellent idea and now we need someone to volunteer to take the pictures next year.

"Raise fees if necessary for expenses. Seriously consider another location for convention and/or show." Believe me, the convention and show location has been debated for several years. Unfortunately, the Shenandoah Inn is the only location between Columbus, Ohio, and Pittsburgh, Penna., that is large enough to handle our convention. It would be most difficult, even to split the location of the various events in Cambridge, since there is no facility large enough to seat approximately 200 people for a sit-down meal. (We had 191 reservations for the banquet this year.) The Board of Directors is continually evaluating possible sites, but so far, without much luck.

"Please make one side of the Banquet room for smokers and the other side for non-

smokers." I was under the impression we had done this since tables on one side of the room were marked "Non-Smoking." I apologize if this wasn't made clear. However, if people were ignoring the non-smoking signs in the designated areas, I was not made aware of it. Had I been, the "No Smoking" would have been enforced in these areas. It is difficult to estimate how many tables to make non-smoking.

Every effort is made to start all events at the scheduled time. Sometimes it is not always possible, but seldom are the delays more than a few minutes long.

"Frills are nice, but not so important that the registration fee should be raised to support them." A great deal of work and thought goes into convention planning, especially when it comes to the frills so that each dollar spent gets the maximum amount of goods. If it becomes necessary to raise the convention registration fee, it will not be a large increase. The actual registration fee is only \$2.50; \$3.50 is for admission to the show.

The floor is open to suggestions for different types of programs other than slides and transparencies. A "show and tell" type is somewhat difficult since in many cases it would mean shipping glass to Cambridge. The educational programs presented at convention time are prepared so that after the convention they may be used by individuals and groups unable to attend.

All of the new programs this year will shortly be available for rental, as are those from last year. These will be advertised in the CRYSTAL BALL.

---

## 1988 & 1989 DATES FOR YOUR CALENDAR

QUARTERLY MEETING - DINNER  
Saturday, November 5, 1988

QUARTERLY MEETING - PREVIEW  
and ALL-CAMBRIDGE GLASS AUCTION  
February 24 & 25, 1989

N.C.C. CONVENTION  
and ANTIQUE SHOW & SALE  
June 22 - 25, 1989

QUARTERLY MEETING - PICNIC  
Saturday, August 5, 1989

---

# Caught in the News

Taken from "Crockery and Glass Journal"  
September 7, 1922

## CAMBRIDGE GLASS CO'S DEPARTMENT HEADS DINED BY PRESIDENT BENNETT

It is not often that one is privileged to enjoy a more delightful time than was had by the department heads and office staff of the Cambridge Glass Co., at a get-to-gether dinner, given in their honor by President of the company, Arthur J. Bennett, on Saturday evening, August 19 (1922), according to A. G. Menzies, manager of the concern's New York office, who was numbered among the forty present at the affair.

The dinner was given at Bud's Barn, a well known clubhouse in Cambridge, where Mr. Bennett's daughter, Mrs. W. L. Orme, received the guests and presided over the dinner arrangements, with a graciousness that added greatly to the enjoyment of the occasion.

The guests arrived at 3 o'clock in the afternoon to the accompaniment of excellent music by the Cambridge Brass Band, which was arrayed in spotless new uniforms of white flannel.

Pitching quoits, horse shoes and a ball game furnished plenty of amusement until 6 o'clock, when dinner was announced.

The delicious menu topped off by cigars and cigarettes was a feast fit for a king. The only feature missing for the complete enjoyment of the party was the presence of Mr. Bennett, who was unable to attend owing to his being in New Hampshire on his vacation.

Others present besides Mr. Menzies were: O.J. Mosser, factory manager; O.F. Mosser, factory manager; H.E. Bates, foreman selecting dept.; W.B. Johnson, glassmaker; E.C. Nordhaus, foreman engine room; J.D. Starr, foreman glass producers; R.T. Kimble, foreman mould shop; F.G. Rickey, foreman packing dept.; C.R. French, foreman open stock room; R.A. Ball, foreman chemical ware dept.; J.C. Powell, foreman cutting shop; G.R. Gregory, foreman decorated stock room; D.E. Martin, foreman etching and decorating dept.; C.B. Michaels foreman grinding room; G.M. Smith, foreman shipping dept.; S.M. Blair, labor foreman; W.C. Conrath, foreman cooper dept.; H.S. Gander, supt. of coal mine; W.R. Schaum, foreman of engraving dept.; Wm. Wesley,

blacksmith; H.H. Burt, bookkeeper; D.T. Dayton, billing dept.; W.T. O'Malley, paymaster; G. Roy Boyd, Treasurer; W.C. McCartney, secretary; J.C. Kelly, factory superintendent; L.J. Pritchard, order dept.; W.L. Orme, vice-president. Office force: the Misses Luella Rickey, Thelma Caygill, Amanda Black, Winifred Emde, Margaret Kidde, Lillian Robbin, Jane Noble, Helen Mathews, Janet Frame, Mary McDermott, Alex. Menzies received for party.

---

September 11, 1924

Among the new acquisitions augmenting the extensive lines of the Cambridge Glass Co., Alex Menzies, manager of the New York office at 184 Fifth Ave., is displaying a variety of new things. Among them is included party lunch sets, with oval plate, high and low footed sherbets, ice tea tumblers in crystal and gold decorations and in transparent colors of aurora blue, amber, amethyst, topaz and mulberry. In boudoir sets a new arrival includes an oval handled tray, covered jug and tumbler in a variety of colors. In vases a number of assorted colors and gold decorations, including ebony and orchid are decidedly appealing. Among the newest things in deep acid etchings is a stemware line in medium optic with gold encrusted border. Another novelty is shown in gold stipple in white and yellow gold and in combination with ebony, jade, primrose, helio and azurite. In this line are numbered salad sets, flaring and cupped bowls, vases, handled baskets and candlesticks. The wine barrel, introduced to catch the tide for summer goods, is also one of the outstanding novelties. The imitation is a perfect replica of a cask, with hoops and the grain of the wood most cleverly imitated. These are obtainable in crystal and a variety of colors and also in satin finish.

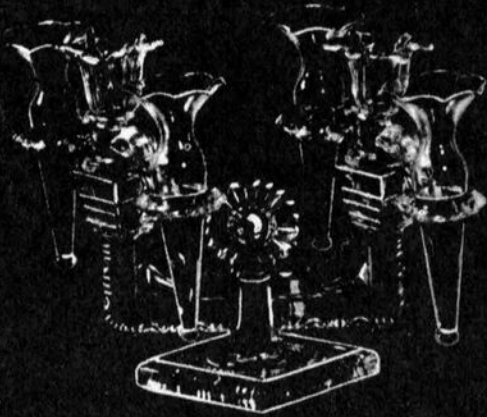
---

October 8, 1925

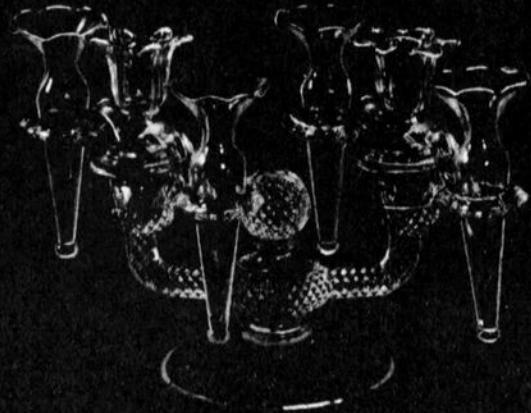
A visitor in New York this week was A.J. Bennett, head of the Cambridge Glass Co., Cambridge, O., who stopped in New York over Monday to consult with O.C. Graham, manager of the concern's New York office. Mr. Bennett was on his way home by motor, accompanied by Mrs. Bennett, after spending the summer at Dixville, N.H., as is their usual custom. He expressed himself as well satisfied with the present condition of business and was very optimistic as to the future.



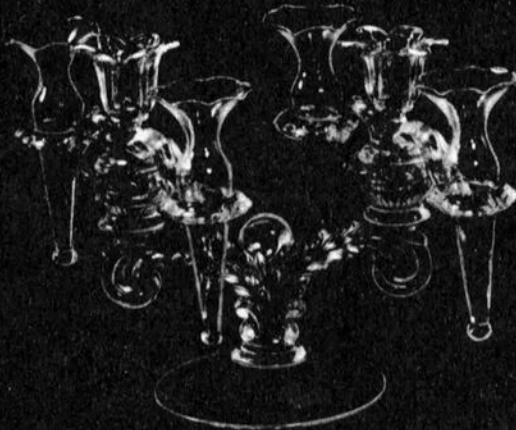
EPERGNES



659—Epergne



660—Epergne



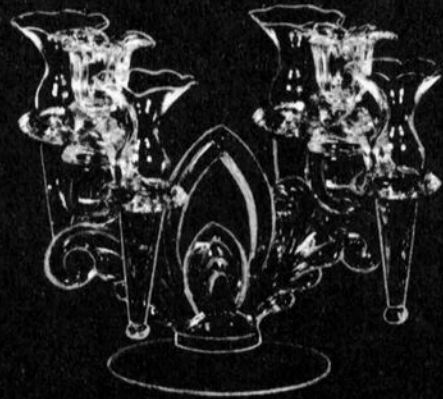
661—Epergne



662—Epergne



665—Epergne



667—Epergne



# The Cambridge Glass Company



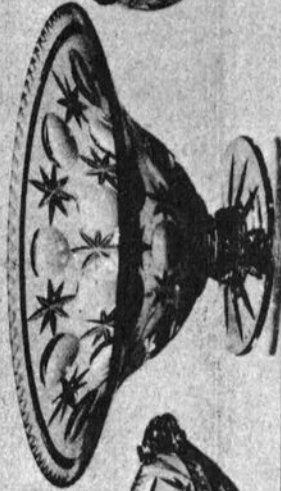
## DE-LUXE CRYSTAL CELESTIAL (600)



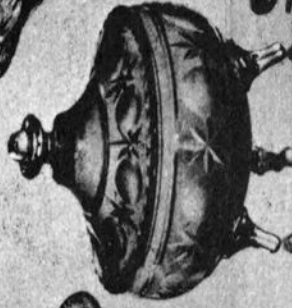
600/21—7 in.  
Rose Bowl



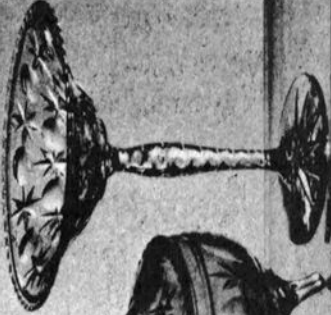
600/20—8 in. 3 Part  
Handled Relish



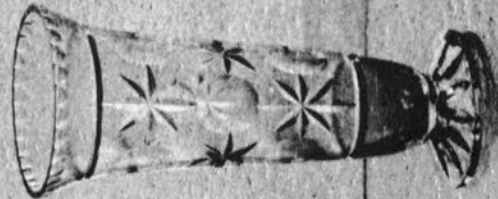
600/12—11 in.  
Ftd. Bowl



600/25—7 in.  
Candy Box & Cover



600/27—6 in.  
Tall Comport



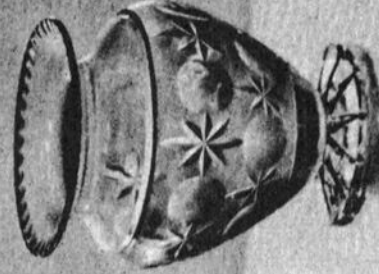
600/22—9 in. Ftd.  
Flower Holder



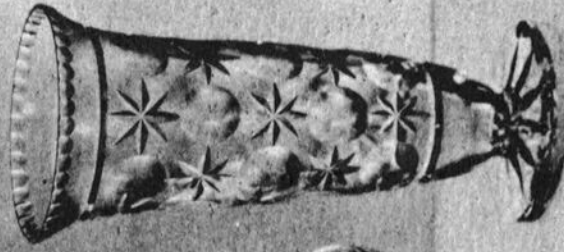
600/2—8 in.  
Flip Flower Holder



600/11—12 in.  
Bowl



600/28—7 in. Ftd.  
Rose Bowl



600/5—11 in. Ftd.  
Flower Holder

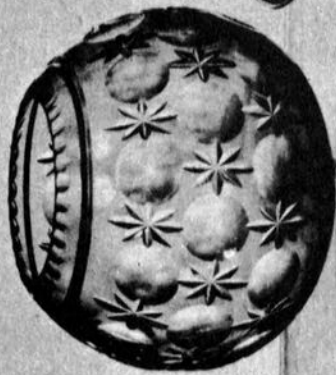
Cambridge, Ohio - - - U. S. A.



# The Cambridge Glass Company



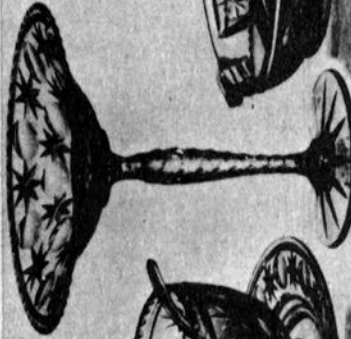
## DE-LUXE CRYSTAL CELESTIAL (600)



600/1—8 in.  
Rose Bowl



600/15—6 in. 4 pc.  
Salad Dressing Set



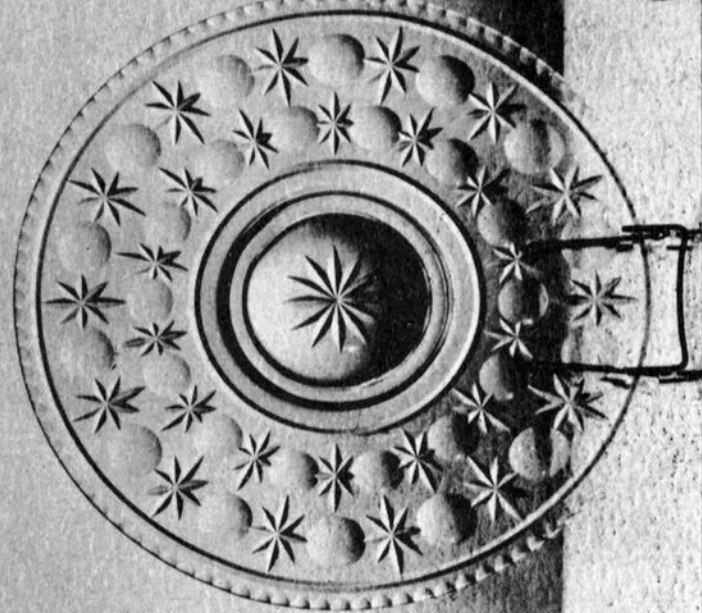
600/9—7 in.  
Tall Compot



600/17—10 in. 5 Part  
2 Hld. Relish



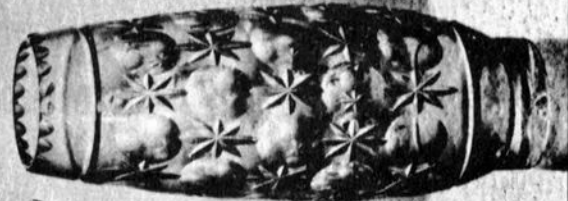
600/10—10 in.  
Bowl



600/8—14 in.  
Plate



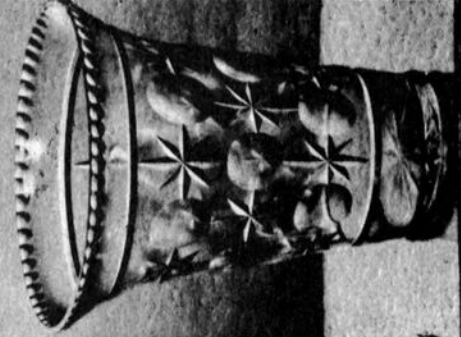
600/6—11 in. Ftd.  
Flower Holder



600/3—11 in.  
Flower Holder



600/4—11 in. Ftd.  
Flower Holder



600/23—8 in.  
Flower Holder

Cambridge, Ohio - - - U. S. A.



## ROCK CRYSTAL (1020)



72-2-Lite Candlestick



P 287-4 Pc.  
Twin Salad Dressing Set



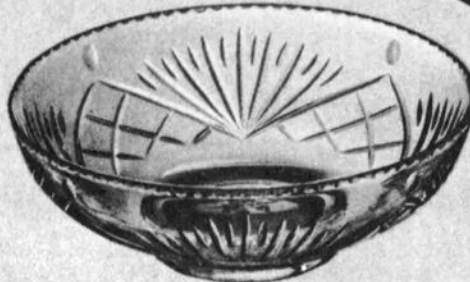
72-2-Lite Candlestick



P 430-12 in. Bowl



P 431-13 in. Bowl



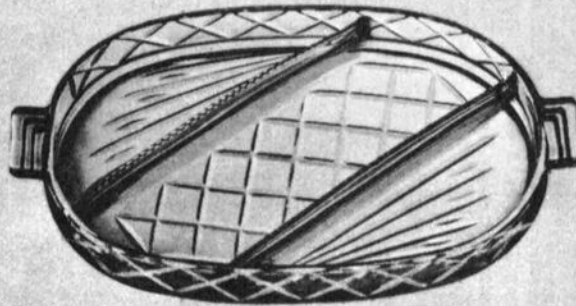
P 429-11 in. Bowl



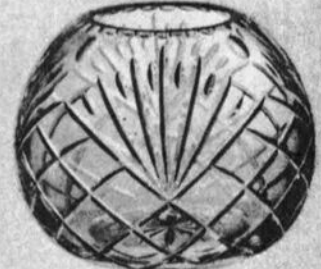
103-7 in. 3 Part  
Candy Box & Cover



531-7 in. Tall Comport



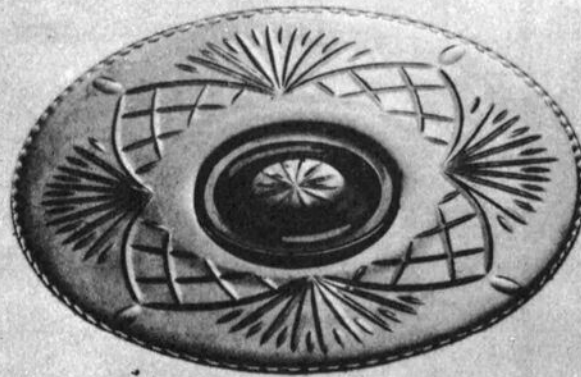
P 215-12 in. 3 Part Relish



500/21-7 in. Rose Bowl



278-11 in. Ftd. Vase



P 125-14 in. Plate



P 580-8 in. Vase

June 1941



# The Cambridge Glass Company



## ROCK CRYSTAL (1021)



647-6 in. 2-Lite Candlestick.



533-3 Pc. Mayonnaise Set



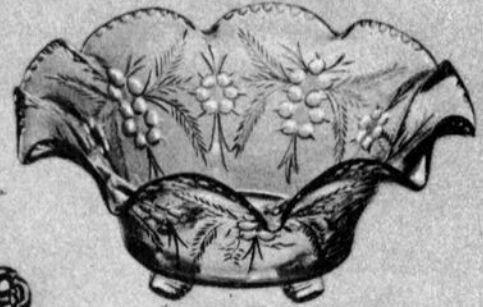
647-6 in. 2-Lite Candlestick



993-12 1/2 in. Bowl



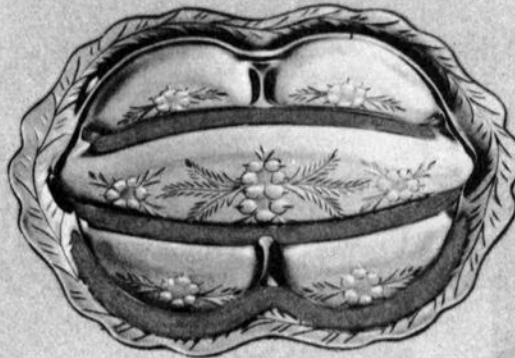
3400/200-11 in. 3 Part Relish



1349-12 1/2 in. Bowl, Crimped



1242-10 in. Vase



3400/67-12 in.  
5 Part Celery & Relish



531-7 in. Tall Comport



1397-13 1/2 in. Plate, r. e.



1186-12 1/2 in. 2 Hdi. Plate

Cambridge, Ohio - - - U. S. A.

June 1941



# The Cambridge Glass Company



## ROCK CRYSTAL —PLYMOUTH (1022)



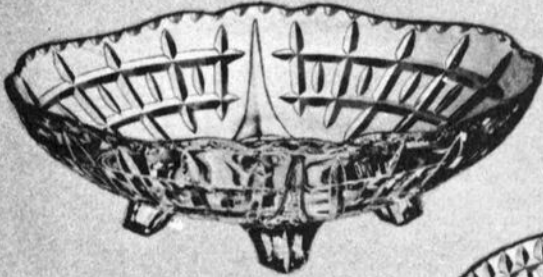
72-2-Lite Candlestick



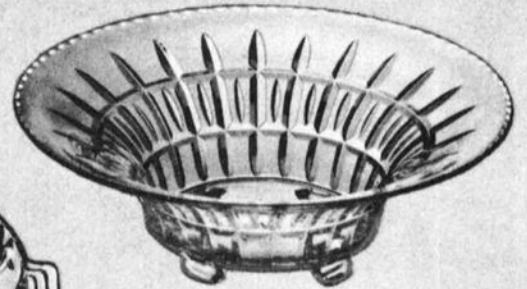
533-3 Pc. Mayonnaise Set



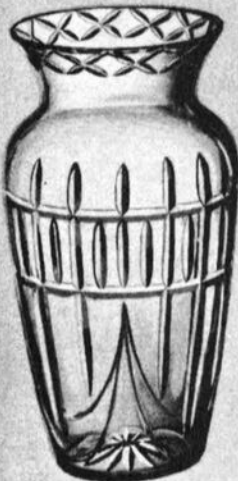
72-2-Lite Candlestick



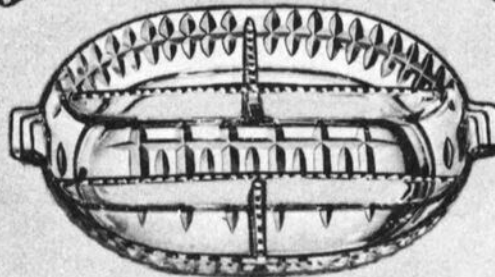
1240-12 in. Oval Bowl



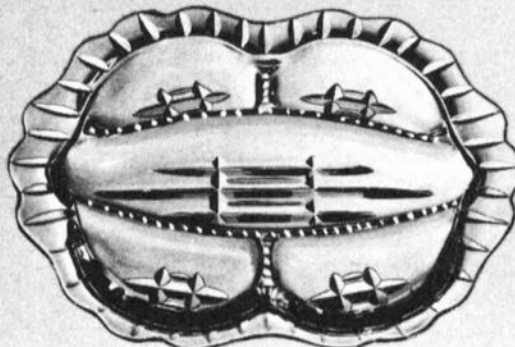
993-12½ in. Bowl



1242-10 in. Vase



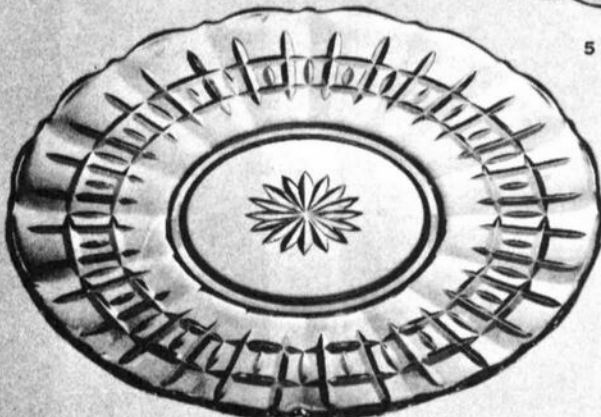
P 212-10 in.  
5 Part Relish



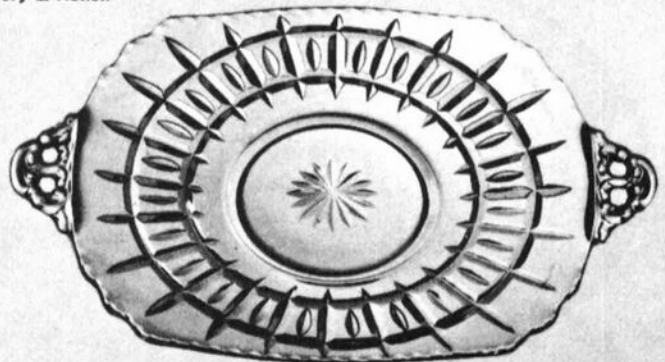
3400/67-12 in.  
5 Part Celery & Relish



531-7 in. Tall Comport



1397-13½ in. Plate, r. e.



1186-12½ in. 2 Hdl. Plate

June 1941

Cambridge, Ohio - - - U. S. A.



---

## — Classified —

---

**BUYING:** Moonlight Caprice or Rosepoint by Cambridge; Rose or Orchid by Heisey; & June, American, Fairfax, Versailles, Trojan, etc., by Fostoria. **Nadine Pankow**, 207 South Oakwood, Willow Springs, IL 60480. 312/839-5231.

---

**FOR SALE:** All glass moonlight blue or willow blue. #2900 5-1/2" flower circle/holder, small damage, 2 pieces \$15. #3400/54 cups (2) \$4. Decagon: 10" plates (2) \$12; boullion cups (5) \$6; 8" bowl, small imperfection \$12. All following #3300 series: tall juice (4) \$10; 5 oz whiskey (4) \$10; 5" bowls (2) \$8. Priced each and as stated. UPS Extra. **Robert Taylor**, 80 Middle Street, Apt. 21, Gloucester, MA 01930. Phone: 617/281-4637

---

**WANTED:** Any pieces in Royal Blue Farberware. Send description and price to: **Bryce S. Crumb**, 1573 Alexandria Drive, Apt #6, Lexington, KY 40504.

---

# \* auction \*

Saturday, February 25, 1989  
THE SHENANDOAH INN  
Old Washington, Ohio

All-Cambridge Glass  
CONSIGNMENT ITEMS WELCOME!

If you wish to consign glass to this Auction, please send your list of consignment glass to our Chairman Lynn Welker, just as quickly as possible. He can then let you know what items can be accepted; and also give you instructions for getting the glass to him.

Cut-off date for glass consignments has been set for October 1st. Don't delay in sending your list as the allotment space fills very quickly, and we don't want anyone left out.

Send your lists to:  
**Lynn Welker**, Chairman  
N.C.C. Auction  
2 E. Main Street  
New Concord, OH 43762

---

---

## QUARTERLY MEETING

---

November 5th is the date set for our next Quarterly Meeting. Please note the reservation form on page 20 of this newsletter. It is important that you send your reservations in just as soon as possible. Please be sure to note your dinner (meat) preference when making your reservation. Your prompt attention to this matter will be greatly appreciated.

---

### Taste of Honey

CLARKE & CAROLE WEST  
3433 Turner Drive  
Springfield, OH 45504  
513/390-3617

---

Cambridge Door Knobs - crystal  
COLLECT THE UNUSUAL  
\$20 per set, includes UPS

VISA - MC - DISCOVER cards accepted

## SPRINGFIELD Antique Show & Flea Market

Clark County Fairgrounds

## SPRINGFIELD, OH

Exit 59 on I-70  
400-800 DEALERS  
INSIDE AND OUTSIDE  
Ohio's largest year round show with an  
emphasis on quality antiques  
9:00 AM - 5:00 PM  
Admission \$1.00  
Children under 12 FREE

NEXT SHOW

Extravaganza  
SEPTEMBER 16, 17 & 18, 1988

#### 1988 SHOW DATES

OCT.	22-23
NOV.	19-20
DEC.	10-11

BRUCE KNIGHT, MGR.

For Information Write  
P.O. Box 2429, Springfield, OH 45501  
Phone (513) 325-0053

# The DAZE

★ SPECIAL OFFER  
to NCC friends  
\$2. off the 1 year  
subscription price.  
when on this form  
or copy of.

The Original, National monthly newspaper dedicated to the buying, selling & collecting of colored glassware and china including Depression Glass and the Elegant Glass (Cambridge, Heisey, Fostoria etc). We educate and inform you each month with feature articles by top notch columnists, readers "finds", club happenings, show news and a multitude of ads. Find those missing pieces to your 30s, 40s or 50s pattern. Can't identify it? Perhaps we can help. "Keep up with what's happening with a subscription to the DAZE. Buy, sell or trade from the convenience of your easy chair.

Name \_\_\_\_\_ Street \_\_\_\_\_

City \_\_\_\_\_ State \_\_\_\_\_ Zip \_\_\_\_\_

1 yr. \$15.00  2 yrs. \$29.00  \$1.75 single current copy  
 Check enclosed  MasterCard  Visa

Exp. date \_\_\_\_\_ Card No. \_\_\_\_\_

Signature \_\_\_\_\_

Orders to D.G.D., Box 57NC, Otisville, MI 48463

Please allow 30 days for your first issue— Canadian subscribers, add \$1. per year and subscribe by charge card only! This Special Offer May Not Be Combined With Other Special Offers

WELCOME TO GLASS COUNTRY!

I-70

STOP AND SEE US

ROUTE 40

WE FEATURE GLASSWARE OF  
CAMBRIDGE, HEISEY, FENTON & FOSTORIA

Plus a full line of Art Pottery and a General line of Quality Antiques

## Stage Coach Antique Mall

RT. 40, ONE-HALF MILE WEST OF I-70 NORWICH EXIT #184  
MANY DEALERS-WIDE SELECTION PLENTY PARKING

DORIS AND ROY ISAACS  
BUY AND SELL  
614-872-3720



7525 EAST PIKE  
NORWICH, OHIO 43787

MON THRU SAT 10-5:30 SUN 12-5:30  
SUMMER EVENING HOURS BY CHANCE  
MANY DEALERS - PLENTY OF PARKING

## COLUMBUS ANTIQUE FLEA MARKET (ANTIQUES & COLLECTIBLES)

Ohio State Fairgrounds - Lausche Building  
Off I-71 Exit 17th Avenue - Columbus, Ohio

### SEPTEMBER 11 TH

Sunday Only - 7 A.M. to 4 P.M.  
Show Admission \$1.50 - Under 12 Free  
150 QUALITY DEALERS

SELLING: Advertising Art Deco, books, Cambridge, clocks, coins, collectibles, Depression glass, dolls, Fiesta, fine early furniture, Heisey, jewelry, lamps, oak furniture, post cards, pottery, good primitives, tools and print shop items.



4214 North High Street, Columbus, Ohio 43214  
(614) 267-8163 (614) 263-6830 (614) 885-2352

NEXT SHOW: October 9, 1988

# DEALERS



# DIRECTORY

NOTE: When writing to the Dealers listed here, please enclose a SASE!

<p><b>MILBRA'S CRYSTAL MATCHING</b> P.O. Box 363, Rio Vista, TX 76093 Milbra Long 817 / 645-6066 FOSTORIA * CAMBRIDGE * HEISEY * DEPRESSION ERA GLASSWARE <b>BUY and SELL</b></p>	<p><b>BENICIA ANTIQUE SHOP</b> 305 First Street Benicia, California 94510 <b>OPEN 11 AM - 5 PM</b> Closed Monday Z. E. LOPES 707-745-0978</p>	<p><b>THE MUTED SWAN ANTIQUES</b> 5486 Peachtree Rd. Chamblee, GA 30341 Heart of Chamblee Antique Row Specializing in Cambridge, Heisey and Fostoria Bill &amp; Pat Miller 404-451-7620</p>
<p><b>Mama Manning's Cherished Relics</b> 3118 Terry Rd., Jackson, MS 39212 JENELL P. MANNING VELMA PICKLE Bus. (601)372-1713 (601)353-5316 Res. (601)372-0456</p>	<p><b>VISIT HISTORIC BENICIA</b> and its 28 shops Off Interstate #80 ..... ..... North of San Francisco</p>	<p>Elegant American Glassware of the Early 1900s <b>ABBA Antiques</b> Bill &amp; Barbara Adt (404) 279-1942 P.O. Box 2485 Lilburn, Georgia 30226</p>
<p><b>BOGART'S ANTIQUES</b> Stagecoach Mall, Building #2 Norwich, OH 43767 ***** Jack and Sharon Bogart 614/826-7439 and 614/872-3514 ***** BUY - SELL - APPRAISE - REFINISH SEAT WEAVING - CLOCK REPAIR COPPER &amp; BRASS POLISHING GENERAL LINE CAMBRIDGE GLASS</p>	<p><b>ANTIQUES ON THE MALL</b> SPECIALIZING IN CAMBRIDGE GLASS Stagecoach Mall - Bldg. 3 - Norwich, OH Virginia Bennett 614/432-4483 64183 Warne Drive, Cambridge, OH 43725</p>	<p><b>BERKELEY ANTIQUES</b> 69 Berkeley St., Boston, MA 02116 <b>OPEN: Monday thru Saturday 11 AM to 5 PM</b> GEORGE &amp; FRANK 617/426-1048 DUNCAN, CAMBRIDGE, HEISEY, GENERAL LINE</p>
<p><b>THE GLASS CUPBOARD</b> 39 Shire Oaks Drive Pittsford, New York 14534 Marcia Ellis Cambridge, Duncan Miller (716) 586-7596 Shows, Mail Order, Appt.</p>	<p><b>D &amp; D ANTIQUES</b> Columbus, Ohio DICK SLIFKO SHOWS ONLY</p>	<p><b>YOU CAN ADVERTISE YOUR ANTIQUE SHOP HERE!</b></p>
<p><b>"Days of Future Passed"</b> 4 Newbrook Lane, Bayshore, L.I., NY 11706 LYNN DEZMAIN (516) 665-3890 Cambridge, Elegant Glass, D. G., Collectibles</p>	<p><b>JUDY'S ANTIQUES</b> Judy Bennett 422 S. Ninth Street (Corner of Jefferson) Cambridge, Ohio 43725 BUYING Ph. 614-432-5855 SELLING Cambridge Glass my Specialty</p>	<p><b>"Happiness Is" - The Stultzs</b> 3106 Warren Court, Glen Allen, VA 23060 Shows and Mail (Richmond Area) 804/262-1273 GLASS CIRCA 1890-1960</p>
<p><b>THE HITCHING POST</b> 746 S. R. 88 Ravenna, OH 44266 Ph. 216-296-3686 D. McDaniel CAMBRIDGE — HEISEY — GENERAL LINE</p>	<p><b>GREEN ACRES FARM</b> 2678 Hazelton Etna Rd., Pataskala, OH 43062 (State Route 310 North) Sat. &amp; Sun. 1-7 PM 614/927-1882 Antiques, Crystal Glass and Collectibles</p>	<p><b>MOSTLY HEISEY &amp; CAMBRIDGE</b> 16 Clayton Place, Albany, NY 12209 Rhoda Curley 518 / 482-6272 SHOP and MAIL ORDER</p>
<p><b>L &amp; M ANTIQUES</b> 1331 S.E. 4th Ave., Pompano Beach, FL 33060 Lydia &amp; Cliff McNeil 305/943-2274 CAMBRIDGE &amp; FOSTORIA OUR SPECIALTY Buy &amp; Sell Shows Only</p>	<p><b>Taste of Honey</b> Glassware—Collectibles CLARKE &amp; CAROLE WEST 3433 Turner Dr. Springfield, OH 45504</p>	<p><b>CRYSTAL LADY</b> 1819 Vinton St., Omaha, NE 68108 Joann D. Hagerty Bus. (402)341-0643 Res. (402)391-6730 Specializing in Elegant Glass &amp; Collectibles</p>
<p><b>GLASS RESTORATION</b> CRYSTAL AND GLASSWARE Don &amp; Lynne Mt. Clemens, Mich. Wormland (313) 791-9191</p>	<p><b>REMEMBRANCES</b> 7597 Daphne Dr., No. Syracuse, NY 13212 Shirley S. Ladouceur 315 / 458-5297 ANTIQUES and COLLECTIBLES MAIL ORDER SHOWS APPOINTMENTS</p>	<p><b>BUD'S TRADING POST</b> GENERAL STORE — FLEA MARKET 501 Wheeling Ave. Cambridge, OH 43725 10-5 Mon. thru Sat. 614-432-4688 CAMBRIDGE - PATTERN - ART GLASS This Bud's for Y'all</p>

# Quarterly Meeting

## NOVEMBER 5, 1988

### "THE UPSTAIRS"

(Next door to Coney Island, at)

### 632 Wheeling Av.; Cambridge, OH

COCKTAILS (Pay Bar).....6:00 PM	DINNER \$9.50 ea. Choice of the following:
DINNER (Sit Down).....7:00 PM	Baked Chicken....._____
BUSINESS MEETING.....8:00 PM	Baked Ham....._____
PROGRAM (To Follow Meeting)	Roast Beef....._____
	Please indicate your choice(s)

Name(s) \_\_\_\_\_  
 Address \_\_\_\_\_ Number of Reservations \_\_\_\_\_  
 Return this form with your check to: N.C.C., Inc., P.O. Box 416, Cambridge, OH 43725.  
 Reservations MUST be received by OCTOBER 28th

## VISIT YOUR MUSEUM

### HOURS:

Wednesday thru Sunday - 12:00 to 4:00 P.M.

Closed Monday & Tuesday

## SEPTEMBER 1988



*I don't have to make over the universe; I have only to do my own small job, and look up often at the trees and the hills and the sky, and to be friendly with all men.*

— David Garyson

National Cambridge Collectors, Inc.  
 P. O. Box 416 Cambridge, Ohio 43725

FIRST-CLASS MAIL  
 U.S. POSTAGE  
**PAID**  
 So Vienna, Ohio  
 45369  
 Permit No. 15

**FIRST CLASS MAIL**

### Membership Renewal Notice

This is your **last** issue of the *Crystal Ball*—if the date on your address label reads **9-88**.

*Please renew now!*