

# Cambridge



# Crystal Ball

ISSUE NO. 121

MAY 1983

Published monthly by the NATIONAL CAMBRIDGE COLLECTORS, Inc.  
To encourage and to report the discovery of the elegant and boundless product  
of the Cambridge Glass Company, Cambridge, Ohio

## THOUGHTS

### FROM YOUR PRESIDENT

I can't believe it's May already. As I write this article (trying to beat the deadline) it seems more like February or March weather. It's thirty-six degrees here this morning and I don't think it has warmed up a noticeable amount all day. But if this is May, then it means that the Annual Convention, June, is just around the corner. Creeps up on you doesn't it? Well, now that I've mentioned it, let's talk about Convention first. We've purposely delayed the Convention registration forms until the May issue (usually they were in the April issue) hoping that the shorter time period may keep all of us from falling into the "I'VE GOT PLENTY OF TIME" syndrome. I know this happens to me, and I suspect it happens to many others. I have had phone calls prior to Convention from persons who have put their registration on the side for a while because they had plenty of time, and by the time they came across it again, the deadline was past. I know you've been making plans all year to attend the Convention, so now instead of putting the registration on the side for a while, just fill it in and drop it in the mail today. I know none of you missed the April 15 deadline for Internal Revenue.

Let me tell you how I remember the April 15 deadline and maybe you can fashion a little scheme to help you remember important deadlines. It all started back fifty years ago when my Mother decided that since I was going to pay my taxes the rest of my life I should always meet the deadline. Therefore, I pay my taxes by midnight on April 15th and one minute after midnight I celebrate my birthday. Easy enough isn't it? Well that worked alright for a while but when I got into my twenties I decided I needed a better reminder since I wasn't always meeting the deadline, so I got married on April 16th. Now I have someone to help me remember. After I mail my taxes, Norma tells me

"Happy Birthday" and "Happy Anniversary" and I return the Happy Anniversary along with "I'm sorry Dear I couldn't buy you a dozen roses again this year because I paid my taxes yesterday."

Enough of that. Also in this issue of *The Crystal Ball* is the schedule of events for Convention. The Friday night "GET ACQUAINTED PARTY" will be held in conjunction with our "TENTH ANNIVERSARY BIRTHDAY PARTY". You won't want to miss this Convention. Plans for the "BIRTHDAY PARTY" will be highlighted in another article in this issue.

Your ballots are in this issue. You will find resumes from the five candidates who are seeking election to the three Board positions open this year, in this issue, also. Exercise your right to vote and return your ballot by the date indicated on it.

Willard

P.S. Don't forget to bring your glass for the "MINI AUCTION" to be held during band intermission.



Happy  
Mother's  
Day



#### MEMBERSHIP RENEWAL NOTICE

If the date on your  
address label is..

**5-83**

This is your LAST ISSUE of the CRYSTAL BALL.  
Please renew NOW!

# CAMBRIDGE CRYSTAL BALL

Official publication of National Cambridge Collectors, Inc., a non-profit corporation with tax exempt status. Published once a month for the benefit of its members.

Membership is available for individual members at \$13 per year and additional members (12 years of age and residing in the same household) at \$3 each. All members have voting rights, but only one *Crystal Ball* will be mailed per household.

Back issues of the *Crystal Ball* are available (beginning with Issue No. 1, May 1973) for members only. Cost: \$.60 each or 12 issues for \$7.

## 1982-83 OFFICERS & COMMITTEE CHAIRPERSONS

PRESIDENT ..... Willard Kolb  
 VICE-PRESIDENT ..... Josephine Barstow  
 SECRETARY ..... Janice Hughes  
 TREASURER ..... William Smith  
 SERGEANT-AT-ARMS ..... Don Armbrrecht

BOOK SALES ..... Billy Harbaugh & Jo Barstow  
 BUDGET & FINANCE ..... David Rankin  
 BY-LAWS ..... David Rankin  
 CONVENTION ..... Josephine Barstow  
 MEMBERSHIP ..... Phyllis Smith  
 MUSEUM ..... Billy Harbaugh  
 PROGRAM & ENTERTAINMENT ..... Frank Wollenhaupt  
 PROJECT ..... Willard Kolb  
 PUBLIC RELATIONS ..... William Smith  
 PUBLICITY ..... Joseph Andrejca  
 1983 AUCTION ..... Lynn Welker  
 1983 ANTIQUE SHOW ..... Joy McFadden  
 PRINTING & MAKE-UP ..... The Jeffersonian Company

## CLASSIFIED ADVERTISING RATES

5c per word \$1.00 minimum  
 We cannot mix type size in classified advertisements. Abbreviations and initials will count as words. Payment in full MUST accompany all ads.

## DISPLAY ADVERTISING RATES

	Members	Non-Members
1/8 page .....	\$ 4.00	\$ 6.00
1/4 page .....	7.00	10.00
1/2 page .....	12.00	18.00
3/4 page .....	17.00	25.00
Full page .....	22.00	33.00

## DEALERS DIRECTORY

1" ad (5 line maximum) ..... \$6.00 for 6 months

Cambridge *Crystal Ball* assumes no responsibility for items advertised and will not be responsible for error in price, description or other information.

Advertising copy, articles, and club news and notices must be in our hands by the 10th of each month to assure publication in our next issue. Advertisements containing reproductions will not knowingly be accepted unless clearly stated.

Opinions or information stated in any signed article or letter printed in the *Crystal Ball* are those of the writer only and may or may not agree with National Cambridge Collectors, Inc. The editor reserves the right to refuse or edit material submitted for publication to conform to the editorial style of the *Crystal Ball*.

## PLEASE ADDRESS ALL CORRESPONDENCE TO

Cambridge Crystal Ball  
 National Cambridge Collectors, Inc.  
 P.O. Box 416  
 Cambridge, Ohio 43725

Janice Hughes, Secretary Phone 614-432-7823  
 Willard Kolb, President Phone 614-695-0695

PLEASE NOTIFY US IMMEDIATELY OF ANY CHANGE IN YOUR ADDRESS!

Please enclose a self-addressed stamped envelope when requesting information!!

## TENTH ANNUAL CONVENTION

# National Cambridge Collectors, Inc.

June 24, 25, 26, 1983

## CONVENTION ACTIVITIES

will be held at the

## SHENANDOAH INN

P.O. Box 147, Old Washington, Ohio 43768

(Interstate 70 - Exit 186 - 7 Miles East of Cambridge, Ohio)

Phone 614/489-5511

## SCHEDULE OF EVENTS

### FRIDAY, June 24th

- 1:00 PM-4:00 PM REGISTRATION - Room 101  
 (ALL Convention Participants - MUST BE REGISTERED!)
- 1:00 PM-..... GLASS FACTORY TOURS - Meet at Shenandoah Inn  
 (Mosser & Boyd's Crystal Art Glass)
- 6:00 PM-9:00 PM ANTIQUE SHOW & SALE  
 PREVIEW - Main Ballroom
- 9:30 PM-..... GET ACQUAINTED PARTY & BIRTHDAY PARTY  
 Banquet Room - Pay Bar  
 BAND - RARE COMBINATION  
 Mini-Auction during intermission

### SATURDAY, June 25th

- 6:00 AM-5:00 PM FLEA MARKET  
 Guernsey County Fair Grounds
- 8:00 AM-10:30 AM REGISTRATION - Banquet Room
- 8:30 AM-10:30 AM CONTINENTAL BREAKFAST  
 Banquet Room  
 Speaker - Mrs. Phyllis Smith  
 Topic - NCC 10 Year History
- 11:00 AM-6:00 PM ANTIQUE SHOW & SALE  
 Main Ballroom
- 6:30 PM-7:30 PM COCKTAIL HOUR - Pay Bar  
 Banquet Room
- 7:30 PM-..... ANNUAL CONVENTION  
 Banquet - Banquet Room  
 Speaker - Mrs. Gwen Shumpert  
 Topic - "Treasures in Glass"

### SUNDAY, June 26th

- 9:00 AM-..... BUFFET BREAKFAST  
 Banquet Room  
 Annual Business Meeting  
 "Show & Tell" (after meeting)
- 12 Noon-6:00 PM ANTIQUE SHOW & SALE  
 Main Ballroom

# CONVENTION SPEAKERS

Phyllis D. Smith of Springfield, Ohio, has agreed to be our Saturday morning Convention Speaker. Her topic will be "The History of N.C.C."

Phyllis joined N.C.C. nearly 10 years ago and is member No. 67. She has served N.C.C. in many capacities which include: *Crystal Ball* Editor for six years; she is completing her second year as Membership Chairman; assisted as Cashier for every N.C.C. Auction; and has served as Registration Chairman for several Conventions and Quarterly meetings. She has also assisted on such other committees as: Projects; Program & Entertainment; Public Relations; Publicity; and Museum. She was a member of the Hokey-Pokey's Study Group No. 1. During the 1981 Convention she was bestowed the honor of becoming the first and only lifetime Honorary voting member in N.C.C. for dedication as C.B. Editor.

Born and reared in Columbus, Ohio, she is a 1949 graduate of Linden-McKinley High School. She also attended Bliss Business College and Ohio State University. She was employed as a secretary for several years by the Ohio Society of Professional Engineers before her marriage to William C. "Bill" Smith, some 31 years ago. She has been employed by such other companies as Seneca Plastics, Cambridge, Ohio, Welcome Wagon, Int., and the Boy Scouts of America. She has volunteered her time to such groups as: P-T-A (secretary, treasure, room mother and Festival chairman); Boy Scouts of America (5½ years as Den Mother) is presently completing her 11th year on the committee of a B.S. Troop for Mentally and Physically handicapped boys; and the Clark County Historical Society. She is a member of Central Christian Church. She and Bill are the parents of two adult sons.

Phyllis and Bill have been actively involved in collecting Cambridge glass for about fifteen years and have an outstanding collection of several hundred pieces. Phyllis has authored many articles for the *Crystal Ball* and presently writes an article entitled "Cambridge Corner" for the *Glass Review* magazine.

Phyllis has missed only one Quarterly meeting of N.C.C. during the 10 years of its existence and it is hoped that she will be able to present us with a little "different" look at ourselves and our organization.



---

Gwen Shumpert of Tupelo, Mississippi has agreed to be our Saturday evening Convention Speaker. Her topic will be "Treasures in Glass".

This will be a repeat performance for Gwen. She was featured speaker at our banquet in 1978 and if you attended you will remember the entertaining speech she gave.

Gwen was born in Mississippi on October 7, 1927 and has had an incurable case of "glassitis" (as she calls it) since the age of twelve. She has been married to High School sweetheart Billy, for 39 years, and is a retired nurse. She has been a columnist (Gwen's Glassline) for the *Glass Review* since 1974. Portions of personal collection has been displayed on different occasions at the Tupelo Lee County Library and the Harrisburg Baptist Church Library. She lectures on glass for area and local civic and social clubs. Gwen also contributed articles for Zemel's book, *American Glass Animals A to Z* and various collectors publications.

Gwen has been a member of N.C.C. since 1975.



---

# NOMINEES FOR BOARD. . .

Your 1983 Nominating Committee presents for your consideration, the following resume for each Nominee seeking to be elected to your Board of Directors. The three (3) elected will serve on this Board for the next four years, until 1987. They are listed here alphabetically. Please follow the instructions on the Ballot(s) attached to this issue of your *Cambridge Crystal Ball* (May 1983), in casting your vote.

---

EVELYN M. ALLEN is one of the founding members of N.C.C. and holder of membership card No. 4. She served on the original Board of Directors from May 1973 until resigning in August 1976. She has served N.C.C. as: Membership Chairman; Chairman of Program & Entertainment; 1976 & 1977 Antique Show Chairman; and as a member of Auction and Convention Committees. She has written several articles for *Crystal Ball* and is a member of the Tally-Ho's Study Group.

She and her husband Tony reside in Heath, Ohio. They are the parents of two grown children and have several grandchildren. Evelyn was born in Columbus, Ohio and is a 1943 graduate of Homer Union High School, Glouster, Ohio. Evelyn is a well known Antiques dealer who specializes in Cambridge glass.

The Allens have been collecting Cambridge glass for approximately 18 years and have an outstanding collection of Cambridge Art Glass, opaques, figurals and bookends. Evelyn's interest in glass began with Heisey and she is also a charter member and has served on the Board of Directors of Heisey Collectors of America. She is a member of United Methodist Church.

---

EDWIN E. GRIFFITH became N.C.C. member No. 2428 a year ago in June, but he has had an almost life-long interest in glass, and the Cambridge Glass Company. He began working at the Cambridge Glass Company, in the cutting department, in November 1935. Ed was the featured speaker at the N.C.C. Quarterly meeting in November 1982 and his topic was "Glass Cutting". He is a journeyman glass cutter by trade.

Ed and his wife Floetta reside in Cambridge, Ohio and are the parents of two children and five grandchildren. He was born in Byesville, Ohio, and is a 1932 graduate of Cambridge High School. He is the owner of the LaFlo Cut Glass Company which he co-founded with his father-in-law Herschel J. Hancock in July 1954. Mr. Hancock was in charge of the cutting department at the Cambridge Glass Company till it closed it's doors in 1954 and Ed worked for him from 1932 till 1954, perfecting his trade.

He and Floetta collect Cambridge cuttings and have many rare and one-of-a-kind items in their collection. They also collect Brilliant Period Cut glass. Ed is a member of the Cambridge Bible Church which he has served as an Elder.

---

JANICE Y. HUGHES has been a member of N.C.C. since 1975 and is holder of membership card No. 337. She was elected to the Board of Directors in 1975 and has served as N.C.C. Secretary from 1975 to the present time. She has also served on such committees as: Auction; Convention; Antique Show; Projects; Program & Entertainment; Museum; and Study Group Advisory.

She has written several articles for the *Crystal Ball* and was instrumental in forming the Cambridge Squares Study Group of which she is a member. She is now serving as co-editor of the *Crystal Ball*, and is on the Museum Committee.

She and her husband Larry reside in Cambridge, Ohio. They are the parents of two children, David 19 and Julia 14. Jan is a 1955 graduate of Cambridge High School and is presently employed as Cashier for the High School Cafeteria.

Janice and Larry have an advanced collection of Cambridge Swans, Nude stemmed pieces, and other unusual items. Besides her involvement in N.C.C., she also belongs to a Bowling team, is active with the National Arthritis Foundation; is a member of the Home & School Association, likes to read, play cards and is a "professional quality" seamstress. She is also an active member of the United Presbyterian Church.

Janice has missed one Board meeting in eight years and has attended every Quarterly Meeting.

---

E.A. "TONY" VIMMER has been a member of N.C.C. for the past five years and is holder of membership card No. 1246. He is a member of the newly formed Cambridge Nudes Study Group in the Chicago area. He has attended several N.C.C. Quarterly meetings and Conventions, and has donated glass to the Museum.

Tony is single and resides in Westchester, Illinois. He feels that the traveling distance required in order to attend meetings, etc., will not present a problem. He was born, in Bavaria, Germany in 1946 and is a high school graduate. He attained the rank of Spec-4 Class while serving with the U.S. Army from 1963-66. Tony is employed as a Foreman for Robert Bosch, Inc., producer of auto products, and is an Antiques dealer with a shop in a mini-mall. He also sets up a booth at Shows.

His interests are many and varied. He used to play Soccer, but now spends his spare time collecting. His interest in Cambridge began when he purchased a creamer and sugar in crystal Car-pice. He now collects Car-pice in unusual colors, as well as a general line of other Cambridge pieces. He loves glass of all kinds, from basic Depression Glass thru the lovely pieces of Lalique. Coins, stamps, pocket watches, glass animals, you name it and you will probably find that he collects it. He is involved with photography as a hobby and would like to be more involved in collecting old cars one day. He is a member of the North American Watch & Clock Collectors, the Imperial Glass Collectors Society, and the 20-30-40 Society.

---

LYNN M. WELKER became a member of N.C.C. in 1975, was elected to the Board of Directors in the Spring of that same year and is holder of membership card No. 371. He has served as Chairman of the Auction Committee for the past eight years, and has served on various other committees which include: Convention; Antique Show; Projects; Program & Entertainment; Museum; and the "Show & Tell" committee at Quarterly meetings. He has written many articles for the *Crystal Ball* and was the Banquet Speaker during the 1980 Convention. He is currently serving on the Museum Committee.

Lynn resides with his parents in New Concord, Ohio. He is a 1970 graduate of Muskingum College with a degree in Music. He is

Manager of their family owned Antiques Shop in New Concord, and with his parents he has co-authored four books on the subject of Cambridge glass.

Lynn and his parents have been collecting Cambridge glass for many years and have a fabulous collection of rare and unusual pieces, which can be seen in the Museum. Besides his N.C.C. activities he also finds time for travel, golf, running, and weightlifting. He is a member of W.E. Methodist Church where he sings in the Choir and serves on the Administrative Board. He is an active advisor to the Kappa Sigma Fraternity at Muskingum College.

## PENNSYLVANIA PRICES

BY BILL AND PHYLLIS SMITH

The last weekend in March saw the Smith's taking a trip over to Pennsylvania to represent N.C.C. as guests at a Depression Glass Show held in Irwin, PA. We made a few stops on the way over, went to a few flea markets while there, and of course had a most enjoyable time meeting new friends and talking Cambridge glass and N.C.C. to anyone who was interested!

We saw a lot of Cambridge glass, but are sorry to say we didn't bring very much of it home with us. Either we are getting terribly "tight" (we know, there are those who will say we have always been that way), or prices are just going out of sight. We saw a lovely amber Mannequin Head with an equally lovely price of \$2,000! This price also included a fairly healthy chip on the base and the beginning of a crack up the side. It was exquisite all the same!

There was a beautiful rubina Honeycomb Candy Jar displayed on a table in front of a window, with the light shining on it in such a way that it was breathtakingly beautiful. We had never seen a piece with more magnificent rubina coloring than it possessed. The price tag of \$200 seemed quite reasonable when viewing it in that light.

Of course there were many other wonderful Cambridge pieces on display and we will list a few for your edification. How about a three-part Relish with the eagle for a center handle at \$65; an 80 oz. crystal Caprice Ball Jug for \$85; crystal Caprice three-light Candlesticks w-Rosepoint etching for \$75 a pair; A Gadroon cup & saucer w-Rosepoint etch for \$42.50 per set; No. 3400 Line cup and saucer w-Rosepoint etch for \$38 per set; and a Martha pattern cup and saucer w-Chantilly etch for \$30 per set.

One booth contained several Mt. Vernon stemmed water goblets and juice size goblets in the dark emerald green. You don't see much in the way of Mt. Vernon in this color and at prices that varied from \$7.50 to \$10 each, we felt they were quite reasonable. An Azurite console set was priced at \$105, and there was a lovely Seagull Flower Holder for only \$38.50! A Near Cut Feather pattern whiskey was seen at \$10; and a beautiful No. 731 etched willow blue Decagon covered candy for \$60. A 6½" type 2 crystal Swan was priced at \$35 and a pair of No. 70 Caprice candlesticks in crystal had an asking price of \$50.

After getting up early both Saturday and Sunday and trudging thru the rain, mud, etc., to take in six flea markets during the weekend, Bill would have been disappointed if he hadn't found at least one little item to bring home. It turned out to be a small bowl in the Near Cut "Four Lines" pattern for the small price of 50 cents. It was the first berry bowl we had seen in this pattern and we were just as happy as "if we had good sense"!



●————●

**DON'T FORGET  
JUNE 10th  
CONVENTION  
REGISTRATION  
DEADLINE!**

●————●

# HAPPY BIRTHDAY N.C.C.

This year, as you've probably heard by now, we'll be celebrating our tenth Birthday. Now when you have a Birthday you just have to have a party, and what a party it will be. There will be decorations, balloons sporting our Club Logo, food, a pay bar and a band for those of you who want to kick up your heels to celebrate. And no Birthday Party would be complete without a huge birthday cake. The party will begin at 9:30 P.M. on Friday, June 24th and will be held in conjunction with the "GET ACQUAINTED PARTY". Don't forget to register for the "GET ACQUAINTED PARTY", and this will automatically be your admission to the "BIRTHDAY PARTY", almost. We though you might like to follow the custom of bringing a gift to the "BIRTHDAY PARTY" for the celebrant. It wouldn't be difficult to decide what the celebrant might like or could use. You guessed it, CAMBRIDGE GLASS. Now the celebrant has a very nice place to display this CAMBRIDGE GLASS and it wouldn't be thrown in the corner or stuffed in a closet like some birthday gifts would. Just think, your gift will be put in our MUSEUM where everyone can enjoy it. So besides your charge shown on your registration form for the "GET ACQUAINTED PARTY", we are asking you to bring a gift for the MUSEUM in the form of a piece of CAMBRIDGE GLASS as admission to the "BIRTHDAY PARTY". This is not mandatory, however.

For those of you who bring a gift, please attach a label with your complete name and address on it. Also, there will probably be some duplications. In this case, we usually ask if we can use the duplicate for a MINI AUCTION item, or in some other way, all of which goes to the MUSEUM. If you specifically want your piece to go to the MUSEUM and not be used in any other way, please write for MUSEUM ONLY on your address label.

This should be a fun night and you certainly won't want to miss it. But then the whole Convention should be extra fun for all of you. None of us will ever be able to celebrate our tenth Birthday again, so let's all get together and celebrate NCC's tenth and maybe we can feel young again. You'll have to come to know.

---

## MOTEL REMINDER

Rooms at the Shenandoah Inn are filling fast, so if you have not made reservations you should do so immediately. Write to: Shenandoah Inn, P.O. Box 147, Old Washington, Ohio 43768 or Phone 614-489-5511.

They are offering a special rate of \$20.00 plus tax, for single room for double occupancy, so be sure to mention your NCC affiliation when making your reservations.

---



# Convention Highlights

Every year (my 3rd) preparing for convention I have a few months of wondering, why did I say yes? When am I ever going to learn to say no? Then all of sudden when I sit down and really start planning and calling for speakers, committee heads and all the other parts of getting a convention together and things start falling into place, I get yesses on my calls, I then know I'm not the only one that cannot say no.

I wanted this years convention to be a real party as it is our 10th Anniversary, so bring your dancing shoes as we are going to have a band for our Friday night mixer. Willard also will have his mini auction. Check his article for all the info on that.

My Saturday Morning speaker will be Phyllis Smith. She is going to do a history on NCC's, 10 years. Some of us may have forgotten how it all started. Knowing Phyllis it should be very interesting.

Saturday Banquet speaker will be Gwen Shumpert speaking on Treasures in Glass. Those of you who were at convention a few years back may remember what a delightful speaker she is. Those of you who have never heard her are in for a treat.

Areas I still need yesses for are Book Sales, Ticket Sales, and volunteers to man these posts during our open hours. My decoration committee needs console sets and help. If any of you want to set up a display please let me know so that I can reserve the room for you. Look for the volunteer list when you pick up your convention package.

The Michigan Caprices will be your hosts and hostesses again this year. I can't say enough how much their work is appreciated.

See you all in June,  
Jo

---

## BANQUET TABLES

Console bowls and candlesticks are needed for our Convention Banquet Tables. This year's color is pink. If you have any sets or single pieces you could share, PLEASE contact: Barbara Harbaugh, P.O. Box 416, Cambridge, Ohio 43725, as soon as possible. PLEASE HELP so our tables will be as beautiful as they were last year!

## MEMBERSHIP

Membership Contest now in progress —  
Invite and sign-up new members now!  
Prize — paid 1983 Convention Registration

*"Be a Booster—never a Knocker—and you'll  
reap dividends in friendship and sales."*

H. K. DUGDALE

EDITOR'S NOTE: The following article is the fourth of a series of articles by Mark Nye dealing with the "Cambridge Girls", ie those etchings bearing girls' names.

# PORTIA

by MARK NYE

"Portia - A new service "Lace on Glass"" was the banner of a May 1932 advertisement in a Pittsburgh newspaper by Kaufmanns, a local department store. Quoting from an article in the June 1932 issue of *China, Glass & Lamps*, "The ware came from Cambridge Glass Company and the "Portia" is among the leading acid-etched patterns on tableware and stemware made by that factory". Time has proven this to be a true statement.

Many consider it in poor taste to discuss a lady's age. In this case, I feel all will be forgiven. Portia was most likely introduced in late 1931 or early 1932, based on the previously cited ad and the fact the etching does not appear in the 1930 catalog or 1931 supplement but is shown in the 1932 supplement. Portia remained in the Cambridge line until sometime between June of 1949 and October, 1953. Thus, for approximately 20 years, Portia was one the Cambridge "girls" and in fact, assumed the role of a "Grande Dame".

The first catalog showing of Portia included three stemware lines, Nos. 3121, 3124 and 3126, shown on as many pages. A fourth page was devoted to items from the 3400 line, that for the most part, are seldom seen today; the 3400-50 four toed cup and saucer, 7 items from the ball shaped line including the 3400-108 80 oz. cocktail shaker with chrome top and the 3400-98 5¼" ivy ball. Another interesting item shown etched Portia was the No. 119 7" basket. Based on what was shown, I would surmise a rather extensive grouping of Portia, particularly on 3400 blanks, was available at the time of introduction. In the 1933 catalog supplement, Portia appears as D-1001 (gold encrustation) on Crown Tuscan vases.

In the Welker Book II of catalog reprints, there is a page from a folder showing Portia on No. 3120 stemware. Since Rosepoint, Valencia and Minerva are also shown in the same illustration, the folder can be dated to the period 1935-1939. I have also seen No. 3122 cordials etched Portia and while I can find no reference to use of the etching on this stemware line, it is my opinion they date to the mid to late 1930s.

The next available general reference for Portia is the 1940 catalog and price list. 21 pages of this catalog were turned over to Portia and the price list contained some 354 listings for Portia on crystal. This does not include the special treatments: gold encrustation - 179 catalog entries and 22 listings for Portia etched, gold encrusted Crown Tuscan pieces. All together, this adds up to 555 catalog items of Portia available in January 1940.

The Nos. 3120 and 3124 stemware lines etched Portia had been dropped by 1940 and taking their place were Stradivari and Nos. 3035 and 3130 along with the continued listing of the 3121 and 3126 stemware, etched Portia. A complete grouping was available in each stemware line, including Stradivari. Listed in addition, were the No. 7966 2 oz. sherry and the 1 oz. cordial as well as the No. 7801 5 oz. footed tumbler. Dinnerware was offered only on 3400 blanks. The place setting pieces included 5 sizes of plates from the 6" bread and butter to the 10½" service plate, 3400-54 cup and saucer, A.D. cup and saucer, cream soup & saucer, cranberry, fruit saucer and 6" cereal. Serving and accessory pieces included 11 different pickle, celery or relish dishes, 5 sets of salt and pepper shakers, 4 oil bottles, butter and cover, at least 11 bowls, assorted bonbons, handled plates and comports, all from the 3400 line.

Complimenting the stemware various tumblers from the 3400 line were offered with the Portia etching, including the numbers 3400-100, 3400-115 and 3400-38. Also from the 3400 line were the No. 100 and No. 38 jugs as well as the 3400-152 doulton pitcher with the Portia etching.

Rounding out the 1940 Portia etched 3400 line were 5 candelabra and a candle stick. All told, there was a least 106 3400 line listings under Portia in the 1940 catalog.

The No. 3500 or Gadroon blank with Portia was limited to 7 relish dishes, 2 candy boxes, ash trays, comports and assorted miscellaneous items.

Various salad dressing sets from the Tally Ho or No. 1402 line were offered with the Portia etching as were the 17½" and 18" plates.

Pristine and Martha blanks etched Portia number 19 in 1940. The Pristine group included the No. 187 2 pc. grapefruit or salad icer and the No. 18 2 pc. cocktail icer. Three of the five Martha items were candelabra or candlesticks, Nos. 495, 496 and 497.

The balance of the 1940 catalog listings for Portia consisted of items not associated with specific lines and include 21 vases, 9 addition candelabra, candlesticks or epergnes, cigarette boxes, more shakers, tumblers and assorted items. A real challenge would be to find all 21 of these vases plus the 2 from the 3400 line.

As reprinted by the NCC, Inc., the 1949 catalog contains 8 pages of Portia etched ware, quite a few less than the 21 used in 1940. From the 1949 catalog we learn two stemware lines were still being made at that time with the Portia etching; Nos. 3121 and 3130.

Continue on to Page 8

Continued from Page 7

The No. 3121 brandy and claret are not shown nor are three of the 3130 footed tumblers, 12 oz. with no stem, 8 oz. and 2½ oz. otherwise the balance of the items in each line are illustrated etched Portia.

A basic dinnerware place setting utilizing the No. 3900 or Corinth blanks was available in 1949, the 3400 essentially discontinued by this time. In the place setting were the bread and butter, salad and dinner plates as well as the 3900-17 cup and saucer. Sufficient serving and accessory pieces, almost entirely on the 3900 blank, were available to serve an elegant meal. To provide candle lighting, 3 candlesticks, single, double and triple, as well as 2 styles of hurricane lamps, Nos. 1603 and 1607, might be had. To decorate the table or home, a hostess had her choice of 9 flower holders, ranging from the No. 6004 6" footed flower holder to the 13" No. 279 holder.

For those who enjoyed a cocktail prior to dinner, the Pristine No. 101 32 oz. cocktail shaker and the No. 7801 4 oz. cocktail, etched Portia, were provided in 1949. The sherry drinkers were not overlooked; for them was the No. 1321-7966 7 pc. sherry set, made up of the No. 1321 28 oz. footed decanter and the 7966 2 oz. sherry, again both pieces etched Portia.

Prior to the issuance of the October 1953 price list, Portia was discontinued for there is no mention of the etching in this list or in any subsequent lists from the re-opened period.

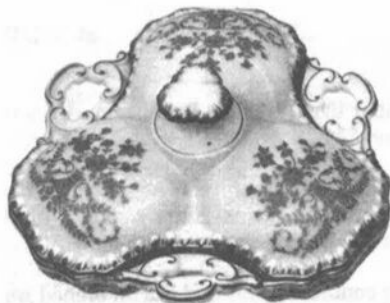
While Portia in color is not unknown, it is most often found on crystal blanks. No. 3126 stemware in Heatherbloom and Forest Green are known and Portia etched No. 3121 stemware in Heatherbloom has been reported. No. 3035 stemware with carmen bowls, crystal stem and foot, etched Portia and gold encrusted have also been found. Occasional pieces in sold carmen with gold encrusted Portia appear from time to time. A Heatherbloom 3400 dinnerware service has been seen as well as amber items. I have a pair of 3400-18 shakers in gold krystal etched Portia which indicates more items are to be found in this color. A Portia etched, gold encrusted Royal Blue bowl is also known and as mentioned earlier, Portia gold encrusted on crystal and Crown Tuscan was produced.



3400/108  
80 oz. Cocktail Shaker  
Chrom. Top



1228. 9 in. Vase  
D/1001



3500/57. 8 in. 3-Compt. Candy Box & Cover  
D/1001





## Portia



1321/7966—7 pc. Sherry Set  
 1321—28 oz. Fid. Decanter  
 7966—2 oz. Sherry



P.101/7801—7 Pc. Cocktail Set  
 P.101—32 oz. Cocktail Shaker  
 (Pat. No. D-133,198)  
 7801—4 oz. Cocktail

Cambridge, Ohio - - - U. S. A.



## Portia



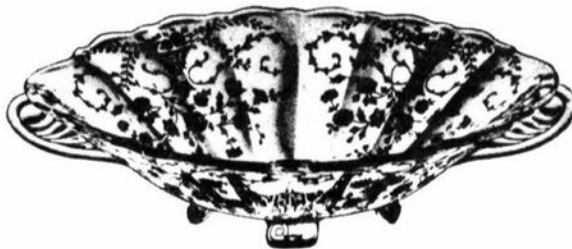
3900/54  
10 in. 4 Ftd. Bowl, flared



3900/62  
12 in. Ftd. Bowl, flared



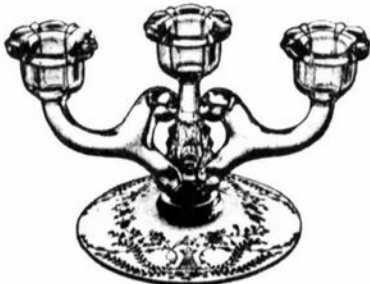
3900/67  
5 in. Candlestick



3900/65  
12 in. 4 Ftd. Oval Bowl



3900/72  
6 in. 2 lite Candlestick



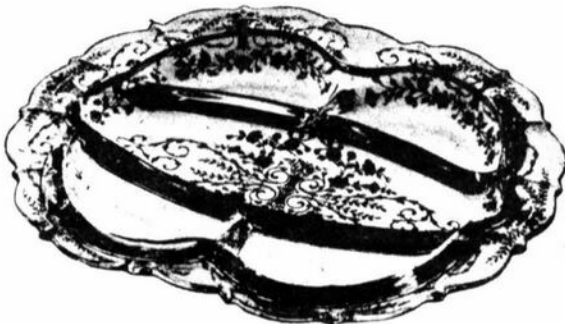
3900/74  
6 in. 3 lite Candlestick



3900/100  
6 oz. Oil, g. s.



3900/111  
4 pc. Mayonnaise Set



3900/120  
12 in. 5 part Celery & Relish



3900/123  
7 in. Relish or Pickle



3900/115  
13 oz. Tumbler



3900/124  
7 in. 2 part Relish

# Study Club News

## STUDY GROUP No. 10 - LONG ISLAND, NY "THE TUSCAN CROWNS"

The February meeting was held at the home of Joyce & Al Colangelo. A general discussion was held on various methods of raising money for our project for the year. Suggestions such as giving talks to various groups in our area, and raffles were also mentioned. We will think about this idea and make a complete study at the next meeting. In our Show and Tell session, the following pieces were discussed: individual salt and spoon in their original box, yellow Gloria shakers, a satin finished crystal Mandolin Lady to name just a few. The next meeting will be held on Thursday, March 10th at the home of Rita Berg.

The March meeting was held at the home of Rita Berg. We used this meeting to parade all the goodies found during the past few winter months and to discuss our fund raiser. Among the items displayed were the Colangelo's Rosepoint Daulton pitcher and six flat tumblers (despite my efforts to the contrary, Joyce managed to get them back). They also showed an amber Chrysanthemum covered jug and flat tumblers. All of these items are headed toward Ohio in June. The Weeks displayed a complete set of pink 3077 stems in all sizes, and also seen on the table were three green covered bottles for cotton, swabs, etc. Rita Berg's best buys were three cups, a 739 in pink, a round amber, and an amber Mt. Vernon, all purchased for 35 cents (!) apiece. Barbara Siemsen showed one of a set of 6 carmen Tally Ho 12 oz. steins, and an amber ice bucket.

Submitted by,  
Barbara Siemsen

## STUDY GROUP No. 5 - Southern California "CALIFORNIA CAMBRIDGE COLLECTORS"

We held our March meeting at Carlene Mathers' home. The subject we studied this month was Cambridge stemware. Beverley Hanson gave a discussion of the various stems that the members brought along from their collections.

The prize this month was a 3400 amber creamer won by Shirley Brandl.

Again this month Ron Rockafellow had the most "finds." He found six amethyst cordials in farber holders for \$2.00 each, a lovely pair of Rosepoint candleholders (the type that can be turned over and becomes a compote) and six amber glasses with an amber 3400 pitcher. The pitcher and glasses were another steal for \$18.00 for the set.

Betty Losch shared an emerald Carnival Nearcut buzzsaw small cruet in green and Beverley Hanson found a crystal ball candleholder. I shared a cobalt Martha Washington vase.

We then had a delicious buffet prepared by Carlene.

Submitted by  
Joan McDowell

# BOOKS FOR SALE

All of the available reference books relating to Cambridge Glass can be ordered directly from the Club.

Address your orders for any of the following to:

### BOOKS

National Cambridge Collectors, Inc.  
P.O. Box 416  
Cambridge, Ohio 43725

Please add \$1.00 (P & I) on each book order.  
(Not required for Price List only orders)

Ohio residents please add 6% State Sales Tax.

\*\*\*\*\*  
by National Cambridge Collectors, Inc.

1956-1958 CAMBRIDGE GLASS CO. CATALOG REPRINT  
(164 page reprint of original catalog)  
Paperback \$6.95

1949-1953 CAMBRIDGE GLASS CO. CATALOG REPRINT  
(300 page reprint of original catalog)  
Hardbound with 1983 Price Guide \$14.95

1930-1934 CAMBRIDGE GLASS CO. CATALOG REPRINT  
(250 page reprint of original catalog)  
Hardbound with 1982 Price Guide \$14.95

1983 PRICE GUIDE  
for 1949-53 catalog reprint \$2.25 PP

1982 PRICE GUIDE  
for 1930-34 catalog reprint \$2.25 PP

\*\*\*\*\*

by Mary, Lyle, and Lynn Welker

CAMBRIDGE GLASS CO.  
(120 pages of reprint from 8 old catalogs) \$6.95

CAMBRIDGE GLASS CO. BOOK II  
(119 pages of reprint from old catalogs) \$6.95

CAMBRIDGE, OHIO GLASS IN COLOR II  
(15 color plates w/descriptions and notes) \$5.95

\*\*\*\*\*

by Harold and Judy Bennett

1903 CAMBRIDGE GLASS CO. CATALOG REPRINT  
(106 page reprint of an original catalog) \$7.50

## PRIVATE CAMBRIDGE COLLECTOR

Wanting To Buy The Following Items:

No. 3011 Nude Stem Series - Clear Stems - Top Any Color  
 No. 1 Banquet Goblet  
 No. 56 oz. Hoch  
 No. 65 oz. Roemer  
 No. 103 oz. V Cocktail  
 No. 113 oz. Tulip Cocktail  
 No. 28 Covered Candy Box  
 No. 29 4" Mint  
 Covered Sweetmeat

Clear Caprice

No. 300 5 oz. Parfaits  
 No. 300 4½ Oz. Clarets  
 No. 89 Marmalade & Cover  
 No. 186 Bitters Bottle  
 No. 187 Ball Decanter  
 No. 178 Doulton Jug  
 No. 103 12" Celery  
 No. 125 3 Part Celery & Relish  
 No. 171 Diamond Relish  
 No. 137 Blown Comport  
 No. 202 Cracker Bucket  
 No. 52 Butter Dish & Cover

PLEASE WRITE CONDITION, COLOR OF NUDE  
 STEM TOP AND PRICE.

Mrs. John D. McNabb  
 9730 N. Lydia Ave.  
 Kansas City, Mo. 64155  
 816-734-2373

## THE MAGICAL UNICORN

Rt. No. 2

New Concord, Ohio 43762  
 Phone (614) 826-7140

### NEW SHOP LOCATION

40 E. Main St.  
 New Concord, Ohio 43762  
 Phone (614) 826-7140

Caprice, blue tall candles.....\$78 pr.  
 Caprice, blue ball jug, 80 oz.....\$195  
 Caprice, clear candy w/cover .....\$50  
 Caprice, clear sm. cig. box .....\$25  
 Rose Point, 3900 cream/sugar .....\$45  
 R. Pt., 12" Corinth 3 sec. celery/relish .....\$65  
 R. Pt., Cordial 3121.....\$65  
 R. Pt., 3400 10½" dinner plate .....\$110 ea.  
 R. Pt., Cake plate, Corinth, 13½".....\$75  
 R. Pt., 3400 9½" dinner plate .....\$60 ea.  
 R. Pt., 13" Corinth bowl.....\$65  
 R. Pt., 3400 Butter dish w/lid.....\$165  
 R. Pt., Butter Tub.....\$225  
 R. Pt., Cocktail, 3500 .....\$35  
 R. Pt., 3500, 6" hdl. ftd., basket .....\$55  
 3400 Amethyst 3 sec. relish .....\$32  
 M. Blue Sandwich tray w/gold trim, Cleo .....\$55  
 Nude cocktails, clear w/Amethyst, Yellow, Dk.  
 Green bowl.....\$95 ea.  
 M. Blue No. 17 Everglades bowl, Swans,  
 13".....\$125  
 Peach Blo No. 1139 Everglades flip bowl, 14"  
 Swans.....\$90  
 Chantilly, Pristine relish, 5 sec.....\$65  
 Wildflower mayo (blown) w/ladle & chrome  
 lid .....\$55  
 Peach Blo, Cleo folded side basket.....\$65  
 4 Amethyst No. 7966 Sherrys.....\$8 ea.  
 Small C. Tuscan Swan.....\$45  
 Diane, Corinth 2 lite candles.....\$48 pr.  
 1211 Everglades candelabrum .....\$150 pr.  
 Cleo, No. 627 Peach Blo candles, gold trim.....\$35 pr.  
 Cleo, No. 627, Apple Green candles, gold trim ..\$40 pr.  
 No. 627 Ebony candles.....\$45 pr.  
 No. 1095 Apple Green cream/sugar  
 w/carrier .....\$40 set  
 2-Portia, 9 oz. goblets, yellow bowl w/clear ft. ...\$28 ea.  
 3121 Bell-original .....\$48  
 Modern candles, singles.....\$38 pr.  
 No. 595 Mugs, 12 oz. Amethyst, Dk. green,  
 yellow, amber .....\$95 set  
 C. Tuscan footed shell candy w/cover, Dec.  
 w/rosed & gold trim.....\$110  
 Imperial (Cambridge Ram's Head candles, Blue  
 carnival).....\$75 pr.

SHIPPING EXTRA

FIESTA FENTON PADEN CITY ART GLASS

"UP TO PARR"  
 PROMOTIONS  
 PRESENTS

THE  
 FIRST SAN FRANCISCO

ALL ANTIQUE & COLLECTABLE  
 With Elegant Glassware from the Depression Era

GLASS  
 CHINA & POTTERY  
 SHOW & SALE

Sat October 22, 1983 10am-6pm  
 Sun October 23, 1983 10am-5pm

COME TO THE CITY & ENJOY

AT  
 THE HALL OF FLOWERS  
 GALLERY

9TH AVE & LINCOLN WAY  
 INSIDE GOLDEN GATE PARK  
 (Out of State Dealers Exhibiting)

Admission \$2.50

For Information Contact  
 "UP TO PARR"  
 592 Guerrero Street  
 San Francisco, Ca. 94110  
 (415) 552-9337

REFERENCE BOOKS AND A WHOLE LOT MORE

EISEY FOSTORIA CAMBRIDGE TIFFIN DEPRESSION GLASS HALL IMPERIAL MORGANTOWN

TIFFANY CARNIVAL DRESDEN MIESSEN WEDGEWOOD CRYSTAL BAUER NEW MATINSVILL.

**— Classified —**

**WANTED:** Relatively new collector needs many pieces in blue CLEO and light blue DECAGON, especially 9½" dinners and 10½" service plates, service pieces and 3077 stemware. Send list with prices and condition to JOE DAVID, 6823 Trexler Rd., Lanham, MD, 20706. Phone 201-474-7416. Advice and help from other Cleo collectors would be appreciated.

**WANTED TO BUY:** Carmen Nude Stem items. Write to: SAWDEY'S ANTIQUES, 4349 Caroline Drive, Erie, PA, 16509. Please include your phone number.

**BUYING:** Cambridge Rosepoint. Heisey Rose and Orchid, Fostoria etched dinnerware and Depression Glass. Also glass figures and unusual glass pieces. NADINE PANKOW, 207 S. Oakwood, Willow Springs, ILL, 60480, Phone: 312-839-5231.

**WANTED:** PINK CAPRICE No. 65 or No. 66 11" oval bowl, No. 133 footed bon bon. EMERALD GREEN CAPRICE No. 151 jelly. CRYSTAL CAPRICE No. 188 2 oz. tumblers. No. 178 90 oz. Doulton Jug, No. 69 7½" candle, lid for No. 165 candy. FRED LOVEJOY, 116 E. Edgebrook, No. 905, Houston, Texas 77034. Phone 713-943-2980.

**STAGE COACH ANTIQUE MALL**

*(formerly White Pillars Antiques)*

7525 East Pike  
Norwich, OH 43767  
614/872-3720

**MANY DEALERS. . .**

**PLENTY OF PARKING. . .**

**WIDE SELECTION OF GLASS  
AND POTTERY  
FURNITURE AND  
GENERAL LINE!**

**BUY and SELL**

**OPEN YEAR ROUND**

**Weekdays - 10 AM - 5:30 PM**

**Sunday - 12 noon - 5:30 PM**

**Summer Evening Hours - by Chance!**

Located 9 miles E. of Zanesville, OH, on I-70 to Norwich Exit No. 164 - then ½ mile W. on Route 40.

**EARL H. JOHNSON**

**Box 52572  
Tulsa, Oklahoma 74152  
(918) 582-6194**

- Amberian Honeycomb 5½" Comport .....\$115.00
- Caprice, cry. 3 com. relish, heavy silver overlay .... 32.00
- Caprice, cry. ftd. tumblers (blown) (2) ..... 12.50
- Carpice, Moonlight Blue 3 oz. oil, orig. stopper ..... 30.00
- Caprice, Pink ftd. tumblers (blown) (2)..... 21.00
- Caprice Moonlight Blue Crm/sug. (creamer cloudy) 20.00
- Caprice, Pink sugar, small..... 21.00
- Cornucopia Vase, No. 575, Mandarin gold..... 40.00
- Crown Tuscan, Nude Stem 7" shell compote ..... 125.00
- Crown Tuscan 4 ftd. bowl No. 3400/45 D1107/8  
12" diam. mkd. Crown Tuscan, worn gold..... 97.50
- Chantilly Etch, ice tub, No. 671, sterling base ..... 42.50
- Chantilly Etch, salt/pepper, orig. chrome tops ..... 25.00
- Doric Column, Ivory 9" candlestick..... 79.00
- Everglades, Cry. 2 hdd. sugar..... 19.00
- Everglades, Pink 3 ftd. 5" diam. bon bon - scarce ... 20.00
- Georgian, Forest grn., 5 oz. tumbler ..... 12.50
- Georgian, No. 3175 sherbets, set of 4 including  
2 Moonlight Blue, 1 yellow, 1 dianth pink..... set 35.00
- Heliotrope, 7¼" d. cupped bowl, gold decor ..... 25.00
- Ram's Head & Fruit 2 lite candelabrum, professional  
repair..... 30.00
- Mt. Vernon, cry. 8½" plates (6) ..... 4.00
- Mt. Vernon, cry. cereal bowls (3) ..... 5.00
- Mt. Vernon, Em. Grn. punch cup (2) ..... 8.50
- No. 3400 Carmen keyhole 2 hdl. sugar ..... 22.00
- No. 3400 cry. No. 647 keyhole, 2 lite candelabrum..... 27.50
- No. 3400 - 11½" vase Wildflower etch ..... 95.00
- No. 627 Yellow Apple Blossom candlestick ..... 25.00
- No. 3400/91 - 8" - 3 comp. relish in Farber  
"Kneeling Nudes" holder ..... 42.50
- No. 3500 Royal Blue 80 oz. ball jug ice lip ..... 62.50
- No. 3900 Moonlight Blue 80 oz. Gyro Optic pitcher ... 42.50
- "Chrys." etch. ice bucket, Apple Green No. 1121 ..... 33.00

**Items Mint and Prices Each Unless  
Noted. P & I Extra.**

NATIONAL CAMBRIDGE COLLECTORS

## FLEA MARKET

**Saturday - June 25th**  
**6 AM - 5 PM**

### GUERNSEY COUNTY FAIRGROUNDS

OLD WASHINGTON, OHIO

*(one mile East of I-70, Exit #186, on Old U.S. 40)*

**DEALER SPACE AVIALABLE**

For information or Contract write: Larry Hughes, Chrm., P.O. Box 416, Cambridge, OH 43725

## COLUMBUS, OHIO ANTIQUA FLEA MARKET

Ohio State Fairgrounds - Lausche Building  
Off I-71 Exit 17th Avenue - Columbus, Ohio

**MAY 22nd**

Sunday Only - 7 A.M. to 4 P.M.  
Show Admission \$1.00 - Under 12 Free  
150 QUALITY DEALERS

SELLING: Advertising Art Deco, books, Cambridge, clocks, coins, collectibles, Depression glass, dolls, Fiesta, fine early furniture, Heisey, jewelry, lamps, oak furniture, post cards, pottery, good primitives, tools and print shop items.

### STOCKWELL PROMOTIONS

4214 North High Street  
Columbus, Ohio 43214  
(614) 267-8163/263-6830/885-2352

**NEXT SHOWS: June 26th**  
**Racetrack Sept. 18th, Oct. 2nd, Nov. 20th, Dec. 11th**



# DEALERS DIRECTORY

NOTE When writing to the Dealers listed here please enclose a SASE!

<p><b>DEL'S DOING</b> 10327 Main, Box 188 Richmond, Ill. 60071 Daily 10-5 815-678-4219 Cambridge - Heisey - Furniture - Jewelry</p>		
<p><b>EVELYN M. ALLEN</b> 135 Cynthia Street Heath, Ohio 43055 Mail Order &amp; Shows 614-522-1635 SPECIALIZING IN CAMBRIDGE GLASS!</p>	<p><b>BENICIA ANTIQUE SHOP</b> 305 First Street Benicia, California 94510  OPEN 11 AM - 5 PM Closed Monday Z. E. LOPES 707-745-0978</p>	<p><b>CHARLES MIKULIK</b> Box 416 Elizabeth, N.J. 07207  — COLLECTOR — Always paying good prices for CAMBRIDGE CAPRICE in all colors 201-372-1101  CARRY MOST TYPES OF ANTIQUES</p>
<p><b>DAVID NIELSEN</b> 109 Lincolnway LaPorte, Indiana 219-326-7276  CAMBRIDGE - HEISEY - GENERAL LINE</p>	<p>VISIT HISTORIC BENICIA and its 28 shops Off Interstate #80 ..... ..... North of San Francisco</p>	
<p><b>BERKELEY ANTIQUES</b> 69 Berkeley St. Boston, MA 02116 George or Frank 617-426-1048 CAMBRIDGE, HEISEY, GENERAL LINE</p>	<p><b>ANDREJCAK'S ANTIQUES</b> 14533 Bayes Ave. Lakewood, Ohio 44107 Joe &amp; Karen Andrejcek 216-226-3417 SHOWS ONLY — CAMBRIDGE — FENTON — CHINA</p>	<p><b>A. SPRINGBORN</b> 5434 Windridge Lane Orlando, Florida 32810  SHOP No. 34 — WEBSTER, FL Open Every Monday 305/298-3011</p>
<p><b>D &amp; D ANTIQUES</b>  Columbus, Ohio  DICK SLIFKO SHOWS ONLY</p>	<p><b>THE HITCHING POST</b> 7467 S. R. 88 Ravenna, OH 44266 Ph. 216-296-3686 D. McDaniel CAMBRIDGE — HEISEY — GENERAL LINE</p>	<p><b>FINDER'S KEEPER'S ANTIQUES</b> P.O. Box 303 P.O. Box 16023 Dayton, O. Columbus, O. 45401 43216 513-254-2937 614-885-2726 SPECIALIZING IN CAMBRIDGE GLASS!</p>
<p><b>THE GLASS CUPBOARD</b> 39 Shire Oaks Drive Pittsford, New York 14534 Marcia Ellis 716-586-7596 CAMBRIDGE ONLY INQUIRIES INVITED</p>	<p><b>GEORGE HOFFMAN ANTIQUES</b> 129 South 4th Street Newark, Ohio 43055 614-345-8021</p>	<p><b>SNYDER ANTIQUES</b> P.O. Box 010 Gates Mills, Ohio 44040 SPECIALIZING IN CAMBRIDGE GLASS Mail Order, Shows 216-461-2110 By Appointment</p>
<p>JOHN PARR ROBERT PARR "UP TO PARR" Stovak, Depression Glass, Fostoria Cambridge, Heisey, Rugs, Antiques Art Deco, Fiesta, Collectibles Tues-Sat 2-7 p.m. (415) 552-9337 592 GUERRERO ST. SHOP &amp; RESIDENCE SAN FRANCISCO, CA 94110</p>	<p><b>J &amp; L GLASS</b> Laws Antique Center, Manassas, VA 22111 and 10629 Main St. Fairfax, VA 22030 703/273-8579 BUY &amp; SELL: Depression, Cambridge, Heisey, Duncan &amp; Fostoria Glass</p>	<p><b>1886 HOUSE</b> East Schodack, N.Y. 12063 MAIL and SHOWS Laurie Cruise 518-477-5895 CAMBRIDGE - NORITAKE - AZALEA - D.G.</p>
<p><b>joyce's antiques</b> Bought and Sold Specializing in HEISEY • CAMBRIDGE • VERLYS • AMERICAN GLASS P O Box 114, Albertson, N Y 11507 (516) 499-3396</p>	<p><b>GLASS RAINBOW of California</b> Glass of the Depression Era In Historic Folsom 813-F Sutter Street Folsom, California 95630 (Sacramento Area) Neil and Ervina McCartney Shop: (916) 985-2386 Res.: (916) 685-5485</p>	<p><b>BILL &amp; SHARON PHILLIPS</b> 21730 Priddy Euclid, Ohio 44123 Ph. 216-261-4665 Shows Only BUYING GLASS, ANTIQUES, ETC.</p>
<p><b>CHARLES A. SHAW</b> P.O. Box 147 Church St. New York, NY 10008-147 Phone (914) 476-6590 AMERICAN GLASS SHOWS &amp; MAIL ORDER</p>	<p><b>AL STEELE</b> Westerville, Ohio 614-882-6483 or 614-882-7124 Mail Orders and Shows Only HEISEY — CAMBRIDGE — PATTERN GLASS</p>	<p><b>BETTY'S ICE HOUSE ANTIQUES</b> 517 Fulton Street Wausau, Wisconsin 54401 Quality Antiques Cambridge - Heisey - General Line Betty R. Puestow Hours 1-5 Daily 715-848-7145 or by appointment</p>
<p><b>MARGARET LANE ANTIQUES</b> 2 E. Main St., New Concord, OH 43762 Lynn Welker 614/826-4418 CAMBRIDGE GLASS MATCHING SERVICE Hours Mon.-Fri. 1-5 PM or by Appointment</p>	<p><b>SHIRLEY S. LAOUCEUR</b> Antiques and Collectibles Specializing in Cambridge Glass BY APPOINTMENT 7597 Daphne Drive 315-458-5297 No. Syracuse, NY 13212</p>	<p><b>GREEN ACRES FARM</b> Antiques, Crystal Glass &amp; Collectibles Sat. &amp; Sun. 1-7 PM (614) 927-1882 2678 Hazelton Etna Road (State Route 310 North) Pataskala, Ohio 43062</p>



# ANTIQUÉ SHOW & SALE

( & 10th Annual NCC Convention )

**SHERANDOAH INN**

INTERSTATE 70 .. EXIT 186 .. 7 MILES EAST OF  
**CAMBRIDGE, OHIO**

**JUNE 24, 25, 26, 1983**

FRIDAY, JUNE 24th	..... 6:00-9:00
(PREVIEW ADMISSION \$3.50)	
SATURDAY, JUNE 25th	..... 11:00-6:00
SUNDAY, JUNE 26th	..... 12:00-6:00
(ADMISSION \$1.75)	

OFFERING CAMBRIDGE AND OTHER FINE GLASSWARE  
 ALONG WITH A GENERAL LINE OF ANTIQUES  
**FOOD** **DOOR PRIZES** **PARKING**

National Cambridge Collectors, Inc.  
 P. O. Box 416  
 Cambridge, Ohio 43725

**FIRST-CLASS MAIL**  
**U.S. POSTAGE**  
**PAID**  
 Cambridge Ohio  
 43725  
 Permit No. 1

**FIRST CLASS MAIL**

## 1983 NCC CONVENTION & ANTIQUE SHOW & SALE

**June 24th, 25th, 26th**

### THE SHENANDOAH INN

P.O. Box 147, Old Washington, Ohio 43768  
 I-70, Exit 186 — 7 Miles E. Of Cambridge  
 Phone 614-489-5511

**Mention NCC When Making Reservations**