

# Cambridge



# Crystal Ball

ISSUE NO. 78

OCTOBER 1979

Published monthly by the NATIONAL CAMBRIDGE COLLECTORS, Inc.  
To encourage and to report the discovery of the elegant and boundless product  
of the Cambridge Glass Company, Cambridge, Ohio

## Thoughts from the President - - -

We are hoping that by the time this issue reaches you, those that have been affected by the hurricanes, floods, and brush fires will have received much deserved relief. Knowing that many of our members live in these affected areas, we hope that the personal losses have been slight or non-existent.

We will try to bring you up to date with answers to the questions that many of you must have regarding our museum efforts of the past several weeks. The results were very definitely negative. Probably this could be justified or defended in a great many different ways, but we will take a positive attitude and suggest that this was just not the right time or place to meet with your general acceptance. The results of the donations and pledges amounted to less than twenty-five percent of the needed capital.

At this writing, we have dropped all efforts toward this structure. The committee is now making a close examination of the results in an effort to determine a new course of action.

We do sincerely appreciate the generosity and support indicated by those of you that did respond to our plea. To those of you that did not respond, we would address this thought; If you have strong opinions regarding our efforts that could not be indicated by a pledge, please let us hear from you also. As we stated last month it is your Club and it will be your Museum.

Our Project chairman, Willard Kolb, has been working quite diligently toward a continuation of our Bookend project. He stated at the Quarterly Meeting that he hopes to have an exciting announcement for us in the very near future.

In the Quarterly Meeting Minutes you will find Lynn Welker's announcement regarding our next All Cambridge Auction. Your support for this event is earnestly solicited. The more support, the more glass, resulting in a bigger and better auction. Let's all give Lynn a hand.

The other big news item to come out of the Quarterly Meeting was the announcement of the reprinting of the 1956-1958 Cambridge Catalog. The printer has committed to having this book completed for us in time for the November meeting.

This reprint will not be of the same quality and size as our two previous releases, but then neither will be the price. It will be paperbound with approximately 164 pages on a coral type paper. Best of all, however, will be the price. It will sell for \$6.95 plus \$1.00 for postage and handling. We will be glad to accept your orders any time now.

This is the same catalog that is being, and will continue to be, reproduced in the Crystal Ball. We are publishing it in book form in response to those who have indicated that they would prefer to have it in a single volume rather than to remove the pages from their newsletters. There will not be a Price Guide provided with this reprint.

Your efforts toward bringing in new members is really starting to show. Keep up the good work.

*Bill*

### MEMBERSHIP RENEWAL NOTICE

If the date on your  
address label is -- **10 - 79**  
This is your **LAST ISSUE** of the  
**CRYSTAL BALL. Please renew NOW!**

# CAMBRIDGE CRYSTAL BALL

# Club News

Official publication of National Cambridge Collectors, Inc., a non-profit corporation with tax exempt status. Published once a month for the benefit of its members. Back issues of the CRYSTAL BALL are available to members only, at a cost of 60¢ each or 12 issues for \$7.

Membership is available for individual members at \$10 per year and additional members (12 years of age and residing in the same household) at \$3 ea. All members have voting rights, but only one CRYSTAL BALL will be mailed per household.

## 1979-80 OFFICERS & COMMITTEE CHAIRPERSONS

PRESIDENT ..... William C. Smith  
VICE-PRESIDENT ..... Lynn Welker  
SECRETARY ..... Janice Y. Hughes  
TREASURER ..... Ruby Landman  
SERGEANT-AT-ARMS ..... George W. Hoffman  
BUDGET & FINANCE ..... William C. Smith  
BY-LAWS  
CONVENTION ..... Lynn Welker  
MEMBERSHIP ..... Josephine A. Barstow  
MUSEUM ..... Arnold Lynd  
PROGRAM & ENTERTAINMENT Frank Wollenhaupt  
PROJECT ..... Willard Kolb  
PUBLICITY ..... Don E. Armbrecht  
STUDY GROUP ADVISORY ..... John F. Rettig

1980 ALL-CAMBRIDGE AUCTION ..... Lynn Welker  
1980 ANTIQUE SHOW

CRYSTAL BALL EDITOR ..... Phyllis D. Smith

## CLASSIFIED ADVERTISING RATES

5¢ per word \$1.00 minimum  
We cannot mix type size in classified advertisements. Abbreviations and initials will count as words. Payment in full MUST accompany all ads.

## DISPLAY ADVERTISING RATES

	Members	Non-Members
1/8 page	\$ 4.00	\$ 6.00
1/4 page	7.00	10.00
1/2 page	12.00	18.00
3/4 page	17.00	25.00
Full page	22.00	33.00

## DEALERS DIRECTORY

1" ad ..... \$6.00 for 6 months

Cambridge CRYSTAL BALL assumes no responsibility for items advertised and will not be responsible for error in price, description or other information.

Advertising copy must be in our hands by the 15th of each month to assure publication in our next issue. Advertisements containing reproductions will not knowingly be accepted unless clearly stated.

PLEASE ADDRESS ALL CORRESPONDENCE TO

CAMBRIDGE CRYSTAL BALL  
National Cambridge Collectors, Inc.  
P.O. Box #416  
Cambridge, Ohio 43725

PLEASE NOTIFY US IMMEDIATELY OF ANY CHANGE  
IN YOUR ADDRESS!

Please enclose a self-addressed, stamped envelope  
when requesting information!!

National Cambridge Collectors, Inc.  
Quarterly Meeting  
August 26, 1979  
Columbia Gas of Ohio, Cambridge, Ohio

The meeting was called to order at 1:55 PM by President Smith. In attendance were 10 Board Members and 26 club members. The minutes of the June 24 meeting were read by Janice Hughes. They were corrected to show the Museum Balance \$31,764.72.

## COMMITTEE REPORTS

**BY-LAWS:** No report.

**CONVENTION:** Chairman Lynn Welker reported the Convention will be at the Shenandoah Inn.

**CRYSTAL BALL:** Editor Smith reported the 50th issue since she has been Editor is completed and is at the printers. She thanked everyone for their letters and reported the California Study Group had at their last meeting a dark green turtle flower frog.

**MEMBERSHIP:** Chairman Jo Barstow reported we now have 899 members.

**PROJECT:** Chairman Willard Kolb reported that hopefully the bookends would be ready by the first of the year.

**PUBLICITY:** No report.

**STUDY GROUP ADVISORY:** Chairman Jack Rettig reported information letters have been sent to several interested parties.

**BUDGET AND FINANCE:** No report.

**MUSEUM:** Chairman Arnold Lynd reported to date 25 pledge cards have been returned in the amount of \$6,305.00. The deadline is September 1st. The property will be available for viewing after the meeting.

**AUCTION:** Chairman Lynn Welker reported the Auction will be the first weekend in March. Consignments should be in by the November Quarterly Meeting. It will possibly be at Shenandoah Inn and may have a \$1.00 admission fee.

## OLD BUSINESS

President Smith reported the Board had approved the publishing of the 1956 Catalog. It will be in a two color cover and will cost \$6.95. This should be available at the November Quarterly Meeting.

## NEW BUSINESS

President Smith reported the CRYSTAL BALL Editor had

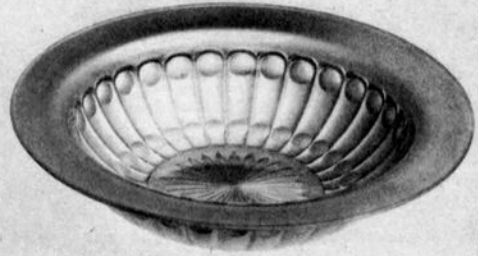
continued on page 8



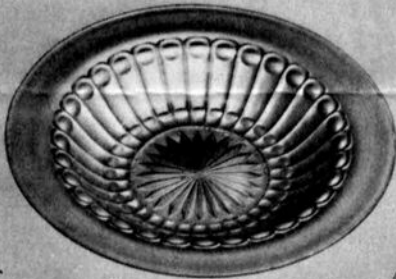
No. 161  
9 inch Hdl. Nut Tray



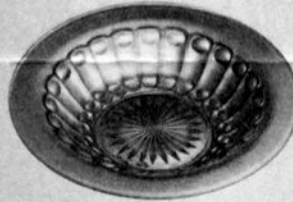
No. 160  
10 inch Hdl. Sandwich Tray



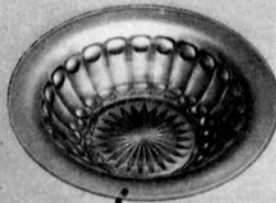
No. 163  
10 inch Fruit Dish



No. 164  
8 1/4 inch Fruit Dish



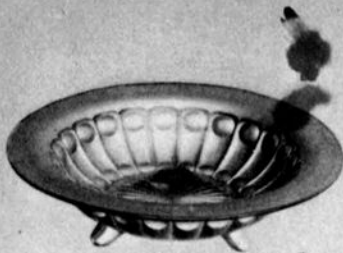
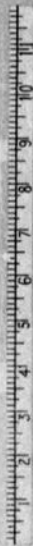
No. 166  
6 1/2 inch Oatmeal Saucer



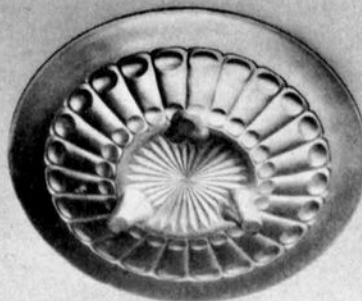
No. 165  
6 inch Baked Apple Saucer



No. 167  
6 1/4 inch Fruit Saucer



No. 168  
7 1/4 inch Preserve Dish



No. 169  
8 inch Candy Plate



No. 170  
5 1/2 inch Jelly Compot



No. 171  
8 1/4 inch Preserve Dish



No. 172  
6 1/4 inch Preserve Dish



No. 173  
5 inch Sweet Pea Vase



No. 174  
6 inch Sweet Pea Vase



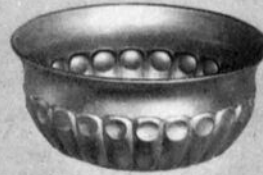
No. 183  
English  
Open Sugar Bowl



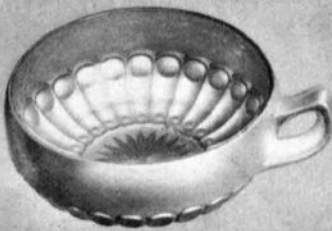
No. 184  
English  
4 1/4 oz. Tankard Cream



No. 185  
English  
8 oz. Tankard Cream



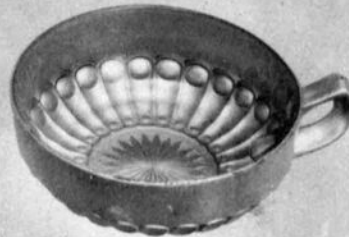
No. 186  
English  
Open Sugar Bowl



No. 187  
5 inch Hd. Nappy



No. 188  
5 1/4 inch Hd. Nappy



No. 189  
5 3/4 inch Hd. Nappy

SEE PRICE LIST FOR VARIOUS SIZES MADE.

# THE HISTORY OF CAMBRIDGE'S PATTERN #2510

by Dr. James S. Measell

In the 1903 Cambridge Glass Company catalog, a pressed ware pattern designated #2510 is shown in the four-piece table set. The purpose of this brief article is to document the history of this rather interesting pattern, which was probably intended to simulate cut glass when it was first conceived and manufactured.

This pattern was first introduced in January, 1898, by the Central Glass Company of Summitville, Indiana, who called it simply "No. 98". Mrs. Kamm mistakenly attributed the pattern to the Central Glass Company of Wheeling, West Virginia (Kamm, VII, p. 13), an entirely different firm. The Summitville-based company was relatively modest, having just 17 pots, but they advertised their new No. 98 pattern in "China, Glass and Pottery Review" for several months, using the covered butter dish and the covered sugar bowl as illustrations. Insofar as I know, only clear glass was made at the Central firm in Summitville.

In late 1899, the Central Glass Company was one of some 19 glass factories brought together under the aegis of the National Glass Company, which had its headquarters in Pittsburgh. Within six months, the National had closed down the Summitville factory, and the moulds there were probably shipped to the nearby Indiana Tumbler and Goblet Works at Greentown, another National concern, albeit much larger than the Central plant. Both clear and transparent blue glass were made in this pattern at Greentown, for the late Dr. Ruth Herrick found many, many fragments when she dug at the Greentown site in the 1950's. A number of different items were made, and Sears Roebuck catalogs for both 1901 and 1902 illustrate the variety of articles in this assortment. All are known in both clear and blue glass.

Between 1901 and June, 1903, the Greentown plant was running around the clock virtually without shutdowns to meet customer demand for its Chocolate

glass and, in 1903, its Golden Agate (Holly Amber) glass. They probably made the pattern under discussion here in clear and blue glass only as long as the market warranted.

The Indiana Tumbler and Goblet Works was destroyed by fire on June 13, 1903. Whether or not any moulds survived the fire is uncertain, but the National frequently moved moulds from factory to factory, so the moulds for this pattern may have been moved to the National's Cambridge plant before the fire at Greentown. In any event, when pattern #2510 was advertised from Cambridge in 1903, it already had quite a history, indeed.

Except for Kamm's remarks about this pattern (VII, p. 13), the only other early pattern glass researcher to mention it is Millard (Goblets II, p. 75). He calls it "Brazen Shield". Although the name is more distinctive than descriptive, I have continued to use it in my new book "Greentown Glass: The Indiana Tumbler and Goblet Company".

## A GREAT CUT IN GLASSWARE.



≡ \$1.90 ≡  
The price of Glassware has been wonderfully reduced. We are on the bottom. We have two outfits at prices never before heard of.

No. 2R675 This complete outfit for \$1.90. No charge for package; we pack and deliver at depot free of charge a complete outfit, consisting of the following 36 pieces: 6 tumblers, 6 goblets, 12 4-inch berry saucers, 1 8-inch berry dish, 1 sugar bowl, 1 butter dish, 1 spoon holder, 1 cream pitcher, 1 3-gallon water pitcher, 1 celery dish, 1 pickle dish, 1 tall open fruit bowl and 1 cake stand. The complete outfit for.....\$1.90

Freight will be very little. 25 cents will take a package 500 miles; 50 cents will pay the freight to most any point. Send \$1.90 and the outfit will be sent to you at once.

Weight, packed for shipment, 40 pounds.

Decorate your table with one of our sets of glassware and you will surely say: "Never before were such goods sold for so little money."

We pack our glassware in boxes, employing only skilled packers, and we have yet to hear of a shipment being damaged under ordinary circumstances.

# CAMBRIDGE BLUES

by David B. Rankin

This month we will conclude our discussion of the Cambridge blues as we explore the dark blue trans-parents.

The first group of dark blues is a class known as cobalt blues. This comes from the use of Cobalt oxide or other cobalt compounds to achieve the dark blue color. When Cambridge introduced its first cobalt blue, no fancy name was used. It was simply called Cobalt Blue and was referenced in "China, Glass and Lamps" from 1924 to 1926. This time frame is also the peak period for the opaque colors and Rubina, so many of the articles found in Cobalt Blue are also found in these colors.

An example of this color can be seen in Bennett's Color Book, plate 31, row 1, item 4, in a candy jar incorrectly identified as Eleanor Blue. As you can see in this example, Cobalt Blue is a true blue and is much lighter than Royal Blue. Examination of Cobalt Blue under blacklight provides us with the strongest reaction of all the blues. The fluorescence is an extremely strong, yellow-green.

While examining non-Royal Blue items under blacklight another dark blue formula was discovered. The reaction of this formula is like night and day compared to the Cobalt formula described above. The reaction is a very weak green fluorescence. Our only clue to the time frame for this color comes from a Decagon plate. As discussed last month Decagon was introduced in 1928. This indicates that this formula is a product of the late 1920's. We found no references to dark blues in this time frame. To provide a basis for reference, I am calling this formula Cobalt Blue II and am now calling the earlier formula Cobalt Blue I. After discovering the Cobalt Blue II color, careful examination of several items in both formulas in natural light reveals that the Cobalt Blue II formula is slightly darker than Cobalt Blue I and has a slight purplish cast. Under artificial lighting this difference is almost impossible to detect. Both colors gather the color effect and look darker in thicker sections of glass.

Welker Color Book II has 2 items in plate 11, row 2, also incorrectly identified as Eleanor Blue. Although I have not examined these particular items under blacklight, the decoration on the perfume is generally found on items associated with the late 20's and is probably Cobalt Blue II. Not enough is known about the Buddha to speculate about its color.

In 1931 Cambridge introduced its best known dark blue - Royal Blue. Royal Blue is so dark and dense that it could almost be called an opaque. References

to Royal Blue in "China, Glass and Lamps" stopped in 1935 but some pieces of Caprice (introduced in 1936) have been seen. The large number of items listed in the 1940 price list suggests that production of Royal Blue continued beyond 1936 to provide a matching service but that the new lines introduced after 1936 were not made in Royal Blue. For example, have any of you seen any Pristine (1937), Virginian (1938), or Martha (1939) in Royal Blue? It is very easy to describe the reaction of Royal Blue to blacklight. There is none whatsoever.

Leaving the cobalt blues we move on to another group of dark blues in the blue-green family. We had observed several pieces in this color which dated from the late 1920's. Research in "China, Glass and Lamps" uncovered a few references in 1926 and 1927 to a color called Bluebell. We seemed to have a match but couldn't be sure until one member acquired a pair of bookends like those shown in Bennett's Color Book plate 31, row 3, item 1 (incorrectly identified as Ritz Blue). These bookends had an original Cambridge stock label with the faint but legible word "Bluebell" on it. Other examples of this color can be seen in Welker Color I, plate 12, row 4 (incorrectly identified as Sapphire). Under blacklight we find a medium, green fluorescence on heavy pressed items and a strong yellow-green reaction on blown ware. To the naked eye the color is just a bit darker than Windex.

We also find another color in the blue-green group that is one of the 8 colors in the Harlequin sets introduced in 1941. It was discontinued in October, 1943 due to war material shortages. A Cambridge advertisement in "Crockery and Glass Journal" in June, 1942, gives us the 8 color names: Tahoe Blue, Moonlight, Forest Green, Gold, Rosa, Mocha, Pistachio and Amethyst. The Statuesque line was one of those made in Harlequin sets.

Upon examination of two 3 ounce Statuesque cocktails from my own collection, I found 2 different colors, neither of which match Bluebell. Thus one of these must be Tahoe Blue but I have just not been able to determine which it is. Under blacklight one cocktail shows a bright blue-green, medium strength reaction. The other cocktail shows a strong, yellow-green reaction fairly close to, but just a bit stronger than, the Bluebell blown formula.

Until this, we had no indication of production in this color range during another period. Until more information is uncovered, I can't even begin to isolate the characteristics of Tahoe Blue.

continued on page 13



Club News - continued from page 2

turned in her resignation three months ago, but it has since been retracted.

Several questions were asked by those present regarding the museum location and building. These were answered by Arnold Lynd, Jo Barstow and President Smith.

President Smith reported Margaret Cohagen had resigned from the Board. Dave Rankin, a former Board Member of Englewood, Ohio, has been appointed to fill the unexpired term.

Program Chairman Frank Wollenhaupt presented a slide program on the 1978 Display Room. President Smith had charge of the Show and Tell.

The next meeting will be held on November 3rd at Baker's Restaurant, Norwich, Ohio.

A motion was made by Mr. Chester Gamble to adjourn at 3:20 PM.

Janice Hughes  
Secretary

## STUDY Club News

### STUDY GROUP #2 - EASTERN OHIO "THE CAMBRIDGE SQUARES"

The Cambridge Squares Study Group met at the home of Jo and Gerald Barstow on Sunday evening, July 22 with a covered dish dinner and cook-out.

There were 9 members and 3 guests present. The guests were Karen and Larry Jones from Cambridge and Doris Isaacs from Los Angeles, Calif.

Charles Upton presented a very interesting program using blacklight.

Two new stems for the Museum Fund were displayed. A #3035 stem in amber and a gold krystal with Bretone etching. Janice Hughes reported there are now 104 stems in the inventory.

The next meeting will be in August at the home of Charles and Marybelle Moorehead.

Submitted by Janice Hughes,  
Secretary

---

### STUDY GROUP #5 - SOUTHERN CALIFORNIA "CALIFORNIA CAMBRIDGE COLLECTORS"

The California Cambridge Collectors met at 7:30 PM on July 27 in the home of Pat and Sterling Carberry. There were 14 members and one guest present.

There was no program planned for that evening as we were all anxious to hear about the Cambridge Convention and Show. Bill and Betty Losch had flown to Ohio for the Convention and were equally anxious to talk about it. Bill described their trip in detail for us so well, it was the next best thing to being there.

Most of the glass that Bill and Betty bought in Ohio wasn't seen that evening as they were having it shipped. We are certainly looking forward to next meeting's "Show & Tell". Something they did bring with them was a memento for each and every club member. Thank you Bill and Betty.

"Show & Tell" followed, and among the items seen that evening were: a 12" gold encrusted Portia etched crown Vase w/ring stem; a Sunset Gyro Optic ice tea with label; an 8" green Draped Lady with oval base; an 8" forest green Asparagus plate; a royal blue Tally-Ho beer stein; a 3" crown tuscan Cornucopia; a crystal Star ashtray; a Rosepoint Bud Vase; a crystal Cambridge sign; pistachio and moonlight blue Nude Stem cocktails; a Pristine cocktail shaker, Chantilly etched; a Mocha #1506 4" novelty basket; a yellow pencil dog; and a crystal Feather toothpick.

Joe Svehla our President, told us about his very interesting find: a forest green Turtle Flower Holder. Joe told us that so far the only colors found in the Turtle are crown tuscan, crystal, and ebony. The Turtle has the flat, not the rounded top, and has 19 holes in the top, and 13 coming through on the bottom. Since Joe specializes in Figural Flower Holders he was very excited about his find. It was the only Turtle that any of us had ever seen, and so was an education for all.

The next meeting will be in the home of Harold and Beverley Hanson and the program will be Caprice.

---

The California Cambridge Collectors met at 3:30 PM, August 19th in the home of Harold and Beverley Hanson. There were 15 members and four guests present.

After business matters we discussed our annual Christmas dinner and drew names for the Christmas gift exchange. We then had our monthly raffle with Betty Regan winning a pair of forest green Decagon candleholders.

Betty Regan gave a very interesting program on the Caprice pattern. Two tables were heavily laden with this lovely glass. Betty also presented members with a 10 page article, entitled "Cambridge 'Caprice' Facts".

After Betty's program we had our "Show & Tell" with members having another great Cambridge hunting

continued on page 13





No. V-134 — CAKE SALVER



No. 3121/1  
5 1/2" TALL COMPOT



No. 3900/126  
CELERY AND RELISH



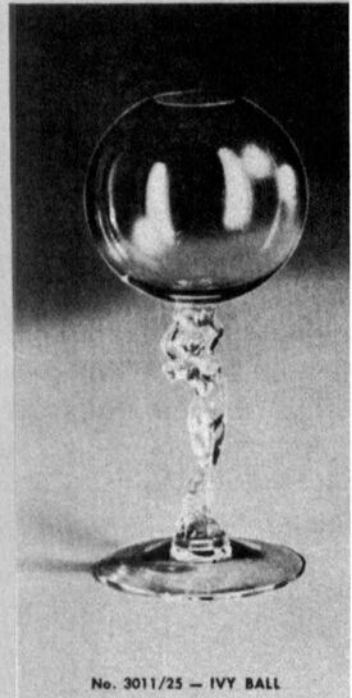
No. 7801 — 4 OZ. COCKTAIL



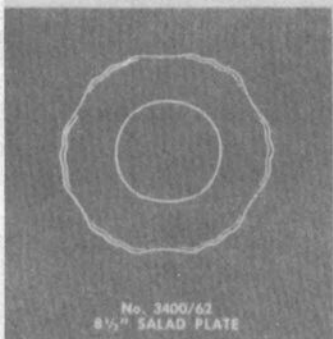
No. 7801  
5 OZ. WHISKEY SOUR



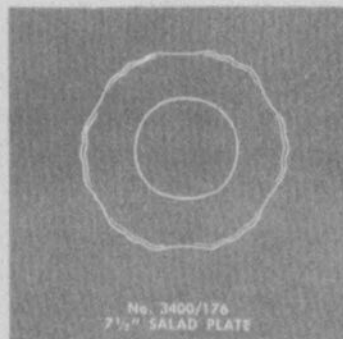
No. 7801  
1 OZ. POUSSE CAFE



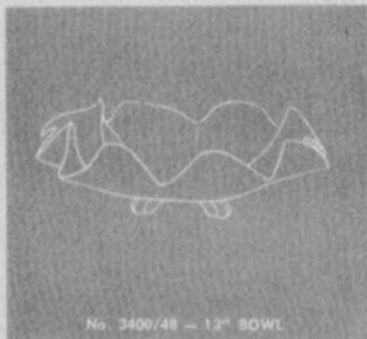
No. 3011/25 — IVY BALL



No. 3400/62  
8 1/2" SALAD PLATE



No. 3400/176  
7 1/2" SALAD PLATE



No. 3400/48 — 12" BOWL



No. 3011/9 — COCKTAIL



No. 3011 — ASH TRAY



No. 3400/160  
12" OBLONG BOWL

# Gifts



No. P 290 — 6 OZ. OIL



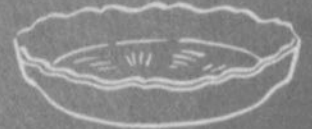
No. 3900/117 — 7-PIECE SET,  
70 OZ. JUG



No. 3900/118/117  
7-PIECE SET, 32 OZ. JUG



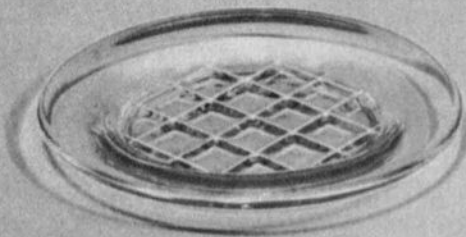
No. 3900/115 — 7-PIECE JUG SET,  
76 OZ. JUG



No. C-13 — 3 1/2" COASTER



No. 1263  
FRENCH DRESSING BOTTLE



No. 604 — 5 1/2" COASTER



No. 1570 — CHEESE PRESERVER JAR



No. 1263 — FRENCH DRESSING  
OIL - VINEGAR



No. 3900/100 — 6 OZ. OIL



No. 3700 — 5" COMPORT



No. 604 — 5 1/2" COASTER



THE CAMBRIDGE GLASS COMPANY, CAMBRIDGE, OHIO, U. S. A.



No. M-157  
DEVILED EGG PLATE



No. 3797/100 — 4 1/2 OZ. OIL



No. 3797/18  
2-PIECE COCKTAIL ICER



No. 3756  
DINNER BELL (PLAIN)



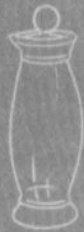
No. 3900/18  
2-PIECE COCKTAIL ICER



No. 1571 — SQUARE CHEESE  
PRESERVER JAR



CORINTH 5" COMPORT



No. P-101  
32 OZ. COCKTAIL SHAKER



No. 3756  
DINNER BELL (PLAIN)

No. 3756  
DINNER BELL (PLAIN)



3400/54 — CUP & SAUCER



No. V-134 — CAKE SALVER,  
FLORAL CENTERPIECE

# Gifts



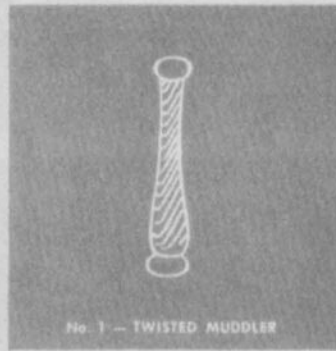
No. 968 — 3-P.C. COCKTAIL ICER



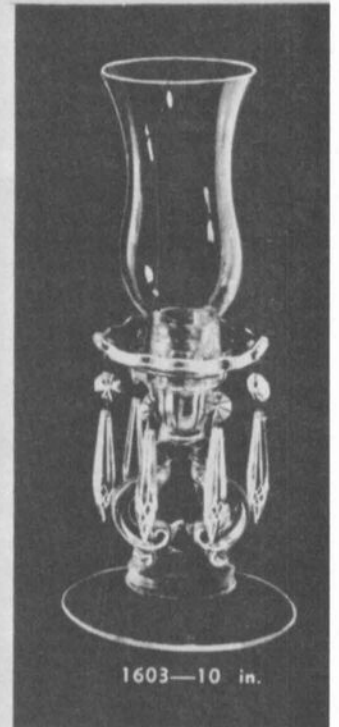
No. 3011/3 — SHERBY



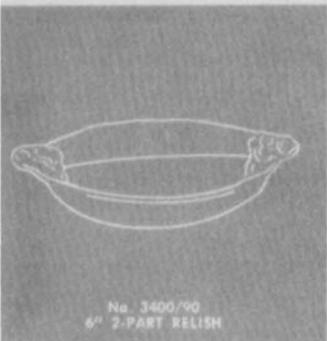
No. 3400/91  
6" 3-PART RELISH



No. 1 — TWISTED MUDDLER



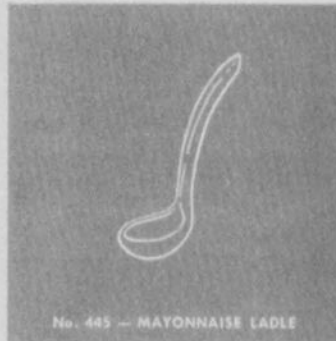
1603—10 in.



No. 3400/90  
6" 2-PART RELISH



No. C-117 — 3 OZ. OIL



No. 445 — MAYONNAISE LADLE



No. 7966 — 2 OZ. SHERRY



No. REGENCY — BELL PLAIN



THE CAMBRIDGE GLASS COMPANY, CAMBRIDGE, OHIO, U. S. A.

In summary, the key characteristics of each formula is as follows:

- 1) Cobalt Blue I (1924-1926) - medium true blue with tendency to appear darker in thick sections. Under blacklight, extremely strong, yellow-green fluorescence.
- 2) Cobalt Blue II (late 20's) - darker than Cobalt Blue I, slight purplish cast. Under blacklight shows weak green reaction.
- 3) Royal Blue (1931-1935) - dark and dense almost opaque, no reaction to blacklight.
- 4) Bluebell (1926-1927) - blue-green color similar to Windex. Under blacklight:
  - a) Pressed formula - medium, green reaction
  - b) Blown formula - strong, yellow-green reaction.
- 5) Unknown blown formula - very similar to Bluebell. Under blacklight the reaction is the same yellow-green as the blown Bluebell, just a little stronger reaction.
- 6) Unknown blown formula - similar to Bluebell but a little darker and bluer. Under blacklight a medium blue-green reaction.
- 7) Tahoe Blue - characteristics unknown, should be either 5 or 6 above.

**Editor's Note:** Dave would very much appreciate receiving correspondence from members having comments of any kind concerning the content of this series of articles. Please send letters c/o NCC and they will be forwarded to him.

## NOVEMBER QUARTERLY DINNER MEETING

by Lynn Welker

The Quarterly Dinner Meeting will be held November 3rd at Baker's Restaurant, Norwich, Ohio. Social hour begins at 6:30 PM and dinner at 7:30 PM. Baker's Restaurant is located just east of the Norwich Exit off I-70, between Zanesville and Cambridge.

The dinner will be Baker's home style buffet. Baked steak, ham, chicken, and fish are the entrees! A large variety of salads, vegetables, and homemade goodies are the usual fare. Of course, you may eat all you want. The price is \$7.00, tax and tip included.

The highlight of the meeting will be the Etching program presented by the Program Committee. Also, you will be able to purchase, for the first time, copies of the new Club sponsored 1958 Catalog Reprint.

Plan to attend for an evening of fun, fellowship, and education! Please bring your Cambridge questionables or unusual items for the "Show & Tell" table.

Remember to make your reservations to: N.C.C., P.O. Box 416, Cambridge, Ohio 43725. Each dinner is \$7.00 and reservations should be received by October 29th.

If you wish, motel reservations are available. Phone 614-872-3232 for Baker's Motel.



TRADE MARK  
"Clearcut"  
MARK

**HAVE YOU OBTAINED A NEW MEMBER?**

### STUDY Club News - continued from page 8

month. The following items were shared and discussed: a 12" ebony Basket; a Diane footed nut cup; a 10½" violet Everglades vase; an ebony Scotty Dog; a 9" frosted Heron; a Lion bookend; an amber mustard pot; an amber original Nude cordial; an amber Nude egg shaped bud vase; a Nude amethyst wine; six Rose-point cordials; a 3½" signed, amber Swan; a 10½" Rubina Basket; and a royal blue marmalade with Farber Bros. holder.

September's meeting will be in the home of Joe and Linda Svehla, and the program will be on swans.

Submitted by Paula Ashby,  
Corresponding Secretary

**NO. 3 CUT "BUD" DESIGN.  
PRESSED AND IRON MOLD BLOWN WARE.**

## CLEVELAND AREA'S 3rd DEPRESSION/VINTAGE GLASS SHOW & SALE

### FEATURING

Heisey-Cambridge-Fostoria  
New Martinsville-Duncan Miller

### GUESTS

Iris Slayton—Depression Glass—Adam to Windsor  
Bill & Phyllis Smith—Cambridge Glass

Sponsored By

### WESTERN RESERVE

### DEPRESSION GLASS CLUB

Saturday, October 27      Sunday, October 28  
10 a.m. — 6 p.m.      11 a.m. — 5 p.m.

NATIONAL GUARD ARMORY  
6225 Engle Road, Brookpark, Ohio  
(Exit 10 off Turnpike — Bagley Road Exit off I-71)

Admission \$1.25 - Glass Identified - Free Parking  
25¢ OFF WITH THIS AD

## Greentown Glass.

Here's an important new book about it.

- \* \* \* Full chapter on glass making techniques and marketing
- \* \* \* Over 350 Chocolate glass pieces listed
- \* \* \* Hundreds of sharp black and white photos
- \* \* \* More than one hundred full-color illustrations

To order your copy of "Greentown Glass: The Indiana Tumbler and Goblet Company", send \$16.95 + \$1.00 postage and handling (or \$24.95 postpaid for the signed, hardback limited edition) to:

Greentown Glass Dept. CCB  
Grand Rapids Museum Association  
54 Jefferson S.E.  
Grand Rapids, MI 49503

Please make checks or money orders payable to **Grand Rapids Museum Association**. Michigan residents add 4% sales tax.

## — Classified —

**WANTED:** CAMBRIDGE CAPRICE. The usual and unusual. Pieces in all colors and Alpine. E.A. Vimmer, P.O. Box 235, Westchester, IL 60153.

**WANTED:** ROSEPOINT PATTERN. 7½" tall fluted goblet. Mrs. Vaughn Campbell, 415 Meadow Road, Glenshaw, PA 15116.

**WANTED:** CAMBRIDGE PORTIA PATTERN. #3126, 9 oz. goblets (4); 7 oz. tall sherbets (5); 4½ oz. clarets (10); and 1 oz. cordials (7). Mint! Mary Ann Schimke, 15 Sorrel Springs, Frenchtown, MT 59834.

### DEFINING GLASS TERMS!

courtesy of Charles Upton

**ANNEALING:** *the gradual cooling of hot glass in the annealing oven or lehr. Also called Leer. This process of allowing the glass to cool gradually removes the internal stresses in the glass that might cause the glass to shatter or break later on. Stresses are present in glass because of the unequal temperature distribution in the glass article while it is being made. Thin articles require much less time than do heavy, thick articles such as paperweights.*

**BATCH:** *mixture of raw materials ready for melting in the pots.*

**BATTLEDORE:** *a wooden paddle used to flatten the bottom of vessels and feet.*

**BLOWPIPE (blowing-iron):** *a hollow iron tube from 2' to 6' long, wider and thicker at the end on which the gather is made than at the blowing end.*

**BOCCA:** *opening in the arches in the sides of the furnace through which the pots are put into the furnace and the batch is put into the pots.*

**CHAIR:** *wooden bench with slanting arms at which the gaffer works while fashioning an object.*

**CHARGE:** *putting the batch into the melting pots.*

**CRIMPER:** *metal or wooden device used in giving a crimped or gauffered rim to an object.*

**CRUCIBLES:** *glass or melting pots, jockey pots, and skittles.*

**CULLET:** *cleansed and broken glass, especially pieces broken from the ends of the blowpipe and pontil.*

**DIP MOLD:** *one-piece mold open at the top.*

# JOHN PARR and DOYLE BYINGTON

384 Liberty St., San Francisco, CA 94114  
Phone 415-826-9122

## CAMBRIDGE FOR SALE, LISTED BY COLORS

### AZURITE

Rams Head bowl and Doric Column Candlesticks - set ..... \$ 475.00

### AMBER

Rare Nude Figure Cigarette Holder #3011, crystal stem ..... 125.00

### LIGHT EMERALD (APPLE) GREEN

Rams Head bowl and Doric Candlesticks - set ..... 500.00

Two-Kid Figure Flower Holder w/oval base ..... 250.00

Rose Lady Figure Flower Holder ..... 200.00

Mandolin Lady Figure Flower Holder ..... 275.00

Bashful Charlotte Figure Flower Holder, 11½", chip under base ..... 100.00

### CARMEN

6½" Swan ..... 250.00

### CROWN TUSCAN

Sea Shell #11, 7" Nude Compote ..... 100.00

#3011 Nude Candlesticks w/Diane etching, signed - pair ..... 175.00

6" Ball Vase ..... 125.00

Shell Cornucopia ..... 65.00

#1297, 11" Vases - pair ..... 100.00

#1299, 11" Vase, signed ..... 100.00

6" Ball Vase ..... 25.00

### CRYSTAL

10½" Swan - No. 2 style ..... 95.00

6" Swan - No. 1 style ..... 40.00

#3500/25, 9" Rams Head Bowl and #3500/12, 6½" Candlesticks - set ..... 125.00

### HELIOTROPE

Rams Head Bowl ..... 350.00

Bud Vase ..... 35.00

### EMERALD GREEN (DARK)

Martha Washington 10" Vase ..... 65.00

#1066 Sherbets, 7 oz., crystal stems - (2) ..... 12.00

Creamer and open Sugar in Farberware holders - set ..... 30.00

### MOONLIGHT BLUE

12" Everglades No. 12 Bowl ..... 65.00

### PINK

Draped Lady Figure Flower Holder, 13" w/tall frosted base ..... 250.00

Rose Lady Figure Flower Holder, 8" ..... 200.00

### YELLOW

#1066, 11 oz., Goblets w/Apple Blossom etching - (3) ..... 20.00

#3400/14, 12" Bowl w/Apple Blossom etching & gold edge ..... 45.00

We are looking for the following for our own collection.

Draped Lady, 8½" in black and unusual colors

Draped Lady, 13½" in blue and frosted blue

All Colored Swans, 8½" and larger

Mannequin Head, 18"

**NOTE:** We will donate 10% of all sales from this ad to the Cambridge Museum Fund, so call or write!

# SALVATORE AARTSMA

Box #1132, Paterson, NJ 07509

Phone: 201-278-3630

(Hours: Sun., Mon., Tues., 7AM - 10PM; Wed., Sat. 6PM - 10PM; Thurs., Fri. 7AM - 2PM)

## ALL CAMBRIDGE GLASS — The first 18 items listed are Crown Tuscan.

1 - 12" footed Bowl w/Diane etching - Rare Crown & A mark (NCC 30-34 pg. 33-30) .....	\$ 100.00	39 - 5½" Comport, mandarin gold, in gold Farber grape lattice holder (B-32-2-3) nice in gold rather than chrome holder .....	22.00
2 - 5" Vase, not etched (NCC 30-34 pg. 33-31) .....	30.00	40 - 28oz. Decanter w/original stopper (NCC 30-34 pg. 34-13); 2 oz. Sherry (11) and 1 oz. Cordials (4) (NCC 30-34 pg. 33-36 "7966"); and 2 oz. #1070 Pinch tumblers (5) (NCC 30-34 pg. 44) All 21 pieces in amber .....	95.00
3 - 8" 3-toed Shell Bowls - 2 (NCC 30-34) ea. ....	35.00	41 - Sherbets in Farber holders - 2, one has small flake, amethyst - Both .....	20.00
4 - 10" 3-toed Seashell Bowl (B-16-3-1) .....	45.00	42 - Card shaped Ashtrays - set of 4, green, amethyst, pink, blue - All .....	14.00
5 - 3½" 3-toed Seashell Ashtrays - 4 (B-16-4-5) ea. ....	17.00	43 - 1½" x 4" 3-footed Candlestick, royal blue .....	10.00
6 - 10" Cornucopia Vase (B-14-1-3) .....	47.00	44 - 6" #1066 Ivy Ball, crystal foot, amethyst bowl (B-32-3-5) .....	24.00
7 - 12" Nude Fruit Centerpiece Bowl (B-15-2-3) .....	125.00	45 - 10" Everglades Bowl w/original label, forest green (NCC 30-34 pg. 33-26 #1) a beauty .....	59.00
8 - 9" Nude Figural Candlestick w/gold stipple and 2 original labels - 1 has the original factory price (B-9-2-1) .....	100.00	46 - 12" Everglades Bowl, crystal (NCC 30-34 pg. 33-27 #8) .....	32.00
9 - 3½" 3-toed Seashell Ashtrays w/gold trim - 2 (B-16-4-5) ea. ....	19.00	47 - 12" Decagon Bowl, marked, crystal w/silver overlay pattern consisting of basket of flowers with lots of vines - very pretty .....	24.00
10 - 3½" x 4½" Dolphin footed Cigarette Box w/gold trim matches #9 above (B-16-4-4) .....	29.00	48 - 3" Swan w/original label, peachblo (B-42-3-4) .....	24.00
or items #9 and #10 .....	60.00	49 - Mt. Vernon Candy or Relish, 3-compartment, marked, carmen (B-38-3-4) .....	34.00
11 - 9½" Cornucopia Vase, Seashell pattern (B-14-1-1) .....	49.00	50 - Caprice Horn of Plenty, moonlight blue (B-51-2-1) .....	22.00
12 - 10" footed Bud Vase (B-15-3-3) .....	24.00	51 - 6" Everglades Comport, moonlight blue (NCC 30-34 pg. 33-29B #40) .....	23.00
13 - 6" footed Comport, Seashell pattern (B-16-1-2) .....	32.00	52 - Everglades Candelabrum, crystal (NCC 30-34 pg. 33-26 #3) Pair of beauties .....	59.00
14 - 3" Swan, turned head, gold encrusted (B-16-4-1) .....	32.00	53 - 3½" x 4½" Caprice Cigarette Box w/cover, Dolphin footed, forest green with crystal lid (B-35-2-2) Nice .....	22.00
15 - 6" 2-lite Candlesticks (B-14-3-1&3) Pair .....	55.00	54 - 2½" x 3½" Caprice Cigarette Box w/cover, Dolphin footed, crystal .....	14.00
16 - 7" footed flared Comport (B-16-3-3) .....	35.00	55 - #3500/15 Gadroon individual Sugar, crystal (NCC 30-34 pg. 33-14) .....	10.00
17 - 8" 3-compartment Candy Box and cover - no gold (B-11-3-4) .....	29.00	56 - #1307 Candelabrum, dark royal blue (NCC 30-34 pg. 33-30) .....	37.00
18 - 3" 3-toed Nut Dish - 4 (B-16-4-6) ea. ....	14.00	57 - Caprice Sugar #41, crystal (W11-19) .....	10.00
<b>NOTE:</b> If you would purchase ALL 18 items as listed above, the price would be .....	800.00	58 - #3121 Goblets w/Rosepoint etching, 8", 12 oz., crystal - 6, 3 w/original labels - never used, came from old Gift Shop - All 6 .....	75.00
plus postage and insurance!		59 - #3400/647 Candelabra, heatherbloom etched Diane - Rare in this color (NCC 30-34 pg. 31-32) Pair .....	95.00
19 - 9" Doric Column Candlesticks, ebony (B-18-3-2&4) Pair .....	95.00	60 - 7½" Comport in Farber Nude Stem holder, amethyst (B-33-1-2) .....	32.00
20 - 6½" Swan, marked, ebony (B-43-1-1 for shape only) ...	65.00	61 - 7½" Comport in Farber Nude Stem holder, emerald green (B-33-1-2) .....	32.00
21 - 8½" Draped Lady Figure Flower Holder, light emerald green (B-41-2-9) .....	60.00	62 - 7½" x 8" Farber Nude Comport - never had insert, grape grill - never used, nice Art Deco piece. Matches #60 and #61 .....	17.00
22 - 8½" Draped Lady Figure Flower Holder, crystal (B-41-2-9) .....	47.00	63 - #1307 Candelabrum, dark royal blue, (NCC 30-34 pg. 33-30) Pair .....	75.00
23 - 12½" Vase, crystal w/Rosepoint etching all over - sits in a Wallace Sterling Silver holder - a beauty .....	65.00	64 - 4½" x 10" Bowl, heliotrope - nice .....	39.00
24 - 8½" Swan, marked, light emerald green (B-42-1-2 for shape only) .....	65.00	65 - 12½" Caprice Bowl and 14" Caprice Underplate, moonlight blue - Both .....	47.00
25 - 8" Sea Gull Flower Holders, crystal - not frosted (B-41-2-1) ea. #347 - the Pair .....	90.00	66 - #70, 7" Caprice Candlesticks w/prisms, moonlight blue (B-48-2-4&5) Pair .....	39.00
26 - 6" Caprice Candlesticks, moonlight blue - not Alpine (B-48-2-8) Pair of beauties .....	65.00	or items #65 and #66 - All 4 pieces .....	80.00
27 - Buzz Saw Cruet or Perfume, green Carnival Glass - no stopper, chip on handle .....	45.00	67 - #70, 7" Caprice Candlesticks w/prisms and 12" x 8" Caprice fruit Bowl, pink Alpine (LaRosa) All 3 pieces ..	57.00
28 - 14½" tall Sherry Decanter in Farber holder w/original stopper, amethyst (B-32-2-4) .....	42.00	68 - 16" Lamp, crystal. A Cambridge Nude is standing on a Mt. Vernon pattern base, with an 8" feather on each side in curved glass. The light is behind the Nude. (May not be Cambridge, but Nude is exactly the same. Special ...	100.00
29 - 5" Comport in Farber holder, engraved on holder base with the name of some society and "10th Anniversary Dec. 2, 1934", amethyst (B-32-2-3) .....	14.00		
30 - Eagle Bookend, crystal (B-40-1-1) .....	85.00		
31 - Nude Stem Cigarette Box w/original cover - 2 - color is a deep carmen, beauties (B35-2-5) Pair .....	195.00		
32 - Nude Stem Ivy Ball w/original label, amethyst (B-44-3-1) .....	88.00		
33 - 8½" Draped Lady Figure Flower Holder w/original label, crystal (B-41-2-9) .....	49.00		
34 - 6½" Bashful Charlotte Figure Flower Holder #1114 (NCC 30-34 pg. 49) .....	34.00		
35 - 12 oz. Georgian Tumblers - 6 matching, one has original label, carmen (B-39-2-3&5) All 6 .....	75.00		
36 - 5" Star Candleholders, crystal - 3 (B-48-3-5) ea. \$13 or all 3 .....	35.00		
37 - 4" Star Candleholders, crystal - 4 (B-48-3-6) ea. \$11 or all 4 .....	40.00		
38 - 4" Star Candleholder, moonlight blue (B-48-3-6) .....	15.00		

**NOTE:** Anyone interested in purchasing all 68 items on this list, the price would be ..... \$2750.00  
Postage and insurance would be included.

**Cashiers Check or Money Order Only - No Personal Checks Please! Postage and Insurance Extra!**



# DEALERS



# DIRECTORY

<p><i>YOU CAN ADVERTISE YOUR ANTIQUE SHOP HERE!</i></p> <p>1 inch - \$6 for six months</p>	<p><b>BENICIA ANTIQUE SHOP</b> 305 First Street Benicia, California 94510</p> <p>OPEN 11 AM - 5 PM Closed Monday</p> <p>Z. E. LOPES 707-745-0978</p>	<p><b>CHARLES MIKULIK</b> Box 416 Elizabeth, N.J. 07207</p> <p>Phone 201-372-1101 BY APPOINTMENT ONLY!</p>
<p><b>EVELYN M. ALLEN</b> 135 Cynthia Street Heath, Ohio 43055</p> <p>Mail Order &amp; Shows 614-522-1635 SPECIALIZING IN CAMBRIDGE GLASS!</p>	<p>VISIT HISTORIC BENICIA and its 28 shops</p> <p>Off Interstate #80 ..... ..... North of San Francisco</p>	<p>Always buying CAMBRIDGE BLUE CAPRICE in blown or unusual pieces only.</p> <p><b>CARRY MOST TYPES OF ANTIQUES</b></p>
<p><b>BLACK ROOSTER ANTIQUES</b> 1018 Clark Street Cambridge, Ohio 43725</p> <p>614-432-3202 M. Sipe CAMBRIDGE GLASS - GENERAL LINE</p>	<p><b>CHURCH STREET ANTIQUES</b> 6 Church Street Boston, Massachusetts 02116</p> <p>George or Frank 617-426-1048 CAMBRIDGE, HEISEY, GENERAL LINE</p>	<p><b>COYLE &amp; SCHUSTER ANTIQUES</b> Box 982 - Ph. 614-349-7362 Newark, Ohio 43055</p> <p>Shows &amp; Mail Order BUY &amp; SELL - CAMBRIDGE - HEISEY</p>
<p><b>D &amp; D ANTIQUES</b> 184 East Kossuth Street (GERMAN VILLAGE) Columbus, Ohio 43206</p> <p>DICK SLIFKO 614-443-6020</p>	<p><b>D'MARIE'S ANTIQUES</b> US Rt. 1 - just South of Rt. 606 Thornburg, Virginia 22565</p> <p>703-582-6220 Jim Rankin OPEN EVERY DAY 10 AM to 6 PM</p>	<p><b>FINDER'S KEEPER'S ANTIQUES</b> P.O. Box 303 Dayton, O. 45401 P.O. Box 16023 Columbus, O. 43216</p> <p>614-254-2937 614-885-2726 SPECIALIZING IN CAMBRIDGE GLASS!</p>
<p><b>THE GLASS CUPBOARD</b> 39 Shire Oaks Drive Pittsford, New York 14534</p> <p>Marcia Ellis 716-586-7596 CAMBRIDGE ONLY SASE FOR LIST</p>	<p><b>GREEN ACRES FARM</b> 2678 Hazelton Etna Rd., SW Pataskala, Ohio 43062 (SR 310 North)</p> <p>Sat. &amp; Sun. 1-6 PM W. Bryan CAMBRIDGE &amp; HEISEY 614-927-1882</p>	<p><b>'OUR GLASS ANTIQUES</b> Box 27, Wills Point, Texas 75169 20th CENTURY COLLECTIBLES featuring CAMBRIDGE GLASS! Shows - No Lists - SASE Please</p> <p>PAUL &amp; GINNY HENDERSON 214-563-6971</p>
<p><b>HOBBY HOUSE ANTIQUES</b> 5323 Sarchets Run Rd. Cambridge, Ohio 43725</p> <p>614-432-6971 Lena Barnes Take Rt. #209 West from Cambridge to Rt. #658 - North 1-1/2 miles</p>	<p><b>GEORGE HOFFMAN ANTIQUES</b> 129 South 4th Street Newark, Ohio 43055</p> <p>614-345-8021</p>	<p><b>1886 HOUSE</b> East Schodack, N.Y. 12063 MAIL and SHOWS</p> <p>Laurie Cruise 518-477-5895 CAMBRIDGE - NORITAKE - AZALEA - D.G.</p>
<p><b>LASHER ASSOCIATES</b> 119 Water St. Gaithersburg, Md. 20760</p> <p>Faith Lasher 301-977-8296 SPECIALIZING IN GLASSWARE</p>	<p><b>ROLLING ACRES ANTIQUES</b> C. R. #33 (8th St. Rd.) Cambridge, Ohio 43725</p> <p>Sandy Jenkins 614-432-2570 CAMBRIDGE &amp; GENERAL LINE ANTIQUES</p>	<p><b>THE MOUSE HOUSE ANTIQUES</b> Route 22 East Cambridge, Ohio 43725</p> <p>Shirlee Bistor 614-432-3132 SPECIALIZING IN GLASSWARE!</p>
<p><b>OLDE TOWNE ANTIQUES</b> 307 W. St. Louis Street Lebanon, Illinois 62254</p> <p>Edith Zimmerman 618-537-4567 GENERAL LINE ANTIQUES</p>	<p><i>YOU CAN ADVERTISE YOUR ANTIQUE SHOP HERE!</i></p> <p>1 inch - \$6 for six months</p>	<p><b>ROBERT PAGE</b> 417 S. Edgeworth St. Greensboro, N.C. 27401</p> <p>SPECIALIZING IN DISCONTINUED CRYSTAL! 919-273-8085 after 6 PM</p>
<p><b>BILL &amp; SHARON PHILLIPS</b> 21730 Friday Euclid, Ohio 44123</p> <p>Ph. 216-261-4665 Shows Only BUYING GLASS, ANTIQUES, ETC.</p>		<p><b>SWISS HILLS COLLECTIBLES</b> Mary &amp; Wilbur Henderson 303 Guilford Avenue Woodsfield, Ohio 43793</p> <p>Mail &amp; Shows 614-472-1133 SPECIALIZING IN CAMBRIDGE GLASS!</p>



## T Shirts *by Brandt*

AN IDEAL GIFT FOR THE CAMBRIDGE COLLECTOR  
A YELLOW T-SHIRT WITH A BLACK CAMBRIDGE SEAL!

FIRST QUALITY — **SPECIAL \$7.50** each  
*(includes postage and handling)*

The T-Shirt you saw at the Cambridge Convention  
is now available in men's and  
women's sizes!

Phone: 305-764-2063

**ORDER NOW:** Send your check or money order (*\$7.50 for each shirt*) to:

T-Shirts by Brandt, 1305 N. W. 1st Avenue, Fort Lauderdale, Florida 33311

Please specify size when ordering:      WOMEN: small, medium, large      MEN: medium, large, x-large

### **IMPORTANT DATES TO REMEMBER!**

#### **NOVEMBER QUARTERLY MEETING**

November 3, 1979

Social Hour 6:30 PM - Dinner 7:30 PM

(Members are "Welcome" to attend the Quarterly Meeting beginning at approximately 8:15 PM.)

#### **BAKER'S RESTAURANT**

Norwich, Ohio  
(Exit #164 from I-70)

*PROGRAM* - Cambridge Etchings

Bring items for "Show & Tell"

Also bring glass to be consigned to the Auction!

Reservations for Dinner should be made with our Secretary. PLEASE SEND YOUR RESERVATIONS, plus remittance of \$7 each, to: NCC, P.O. Box 416, Cambridge, Ohio 43725. Deadline is October 29th.

#### **ADDITIONAL DATES FOR YOUR 1980 CALENDAR**

1st Weekend in March - —

All-Cambridge Glass Auction

June 27, 28, 29 - -

Annual Convention & Antique Show

Complete information concerning these two events will be provided in future issues of the Cambridge CRYSTAL BALL.

National Cambridge Collectors, Inc.  
P.O. Box #416  
Cambridge, Ohio 43725

FIRST-CLASS MAIL  
U.S. POSTAGE  
**PAID**

So. Vienna, Ohio  
45369  
Permit No. 15

**FIRST CLASS MAIL**