

Cambridge Crystal Ball



ISSUE NO. 34

FEBRUARY 1976

Published monthly by the NATIONAL CAMBRIDGE COLLECTORS, Inc.
To encourage and to report the discovery of the elegant and boundless product
of the Cambridge Glass Company, Cambridge, Ohio

Thoughts from the President - - -

Now that the Holidays are behind us and everyone is ready to settle back into harness it seems a very appropriate time to start thinking about the activities and events that will help to put Cambridge glass and the Cambridge Club out in the front during this fresh new year.

A very active January Board meeting brought out several new ideas and potentially beneficial activities that should interest each of you. We will take this opportunity to bring you up to date, with the hopes that you in turn will take the time to make some plans of your own that will be in harmony with us.

First and foremost, another change in the Club By-laws was proposed. This change has been suggested so that more of you might share in our activities. The wording of this change appears in another article in this issue, but in short, it would change the Annual Meeting from the month of May to the month of June. This, hopefully, would allow many of you to include Club activities in your vacation planning.

We can appreciate the fact that many of you are limited to vacation during the summer months and we are hopeful that this will be helpful to you.

It has also been decided that if this proposal is acceptable to the membership and passes at the February Quarterly Meeting, we will have a Club Antique Show in June in conjunction with the Annual Meeting.

We feel that this is one more way in which we can be responsive to those members who have at times stated that they cannot attend our functions due to the distances involved.

With an annual meeting in June and the Club Auction in August, we would have two summer period functions available.

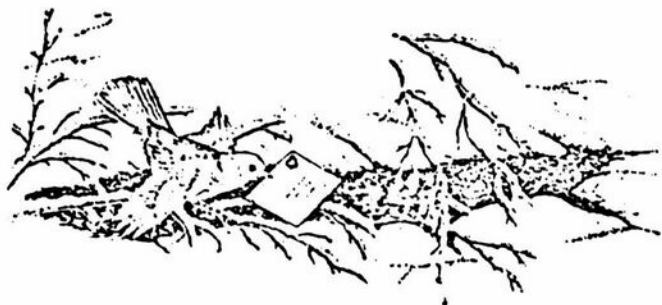
Another discussion at the Board meeting was the Price Guide for the 1930-34 Catalog. This is not a dead issue by far. It has just turned out to be a very time consuming one. We are hopeful at this time that we can have the prices all collected at the February meeting and that we can get on with the mechanics of getting the publication to press. We will keep you informed of our progress.

We are very hopeful that the vast majority of you members will give serious thought to the idea of encouraging additional people to join our ranks. So much so, that we are enclosing a membership application for your use.

As you read this issue, please give your attention to the changes in paper stock and printing. This issue has been printed by the Xerox duplicating process and should reduce our costs by a considerable amount. The savings should be more than sufficient to offset the additional postage costs we now have. Let us hear your comments.

Your Board feels that these changes and additions will greatly enhance the Club activity schedules but it will be your support that makes this "The Year of Progress".

Bice



MEMBERSHIP RENEWAL NOTICE

If the date on your
Address Label is --

2-76

This is your last issue of the CRYSTAL BALL! Don't miss a single issue - RENEW YOUR MEMBERSHIP NOW!

FORM ENCLOSED FOR YOUR CONVENIENCE

CAMBRIDGE CRYSTAL BALL

P. O. Box #416
Cambridge, Ohio - 43725

Official Publication of

NATIONAL CAMBRIDGE COLLECTORS, INC.

BY-LAW CHANGE RECOMMENDED

1975-76 Officers & Committee Chairpersons

PRESIDENT - - - - - William C. Smith
VICE-PRESIDENT - - - - - Charles Upton
SECRETARY - - - - - Janice Hughes
TREASURER - - - - - David G. McFadden

BUDGET & FINANCE - - - - William C. Smith
BY-LAWS - - - - - David G. McFadden
CONVENTION - - - - - Mary Jane Miller
MEMBERSHIP - - - - - Dave Hardesty
MUSEUM - - - - - Ed Ruby
PROGRAM & ENTERTAINMENT - - - Evelyn Allen
PROJECT - - - - - Charles Upton
PUBLICITY - - - - - Frank Wollenhaupt
STUDY GROUP ADVISORY - - David B. Rankin

CRYSTAL BALL Editor - - - Phyllis D. Smith

CLASSIFIED ADVERTISING RATES

5¢ per word \$1.00 minimum

We cannot mix type size in classified advertisements. Abbreviations and initials will count as words. Payment in full must accompany all ads.

DISPLAY ADVERTISING RATES

	Members	Non-Members
1/8 page - - - - -	\$ 4.00 - - -	\$ 6.00
1/4 page - - - - -	7.00 - - -	10.00
1/2 page - - - - -	12.00 - - -	18.00
3/4 page - - - - -	17.00 - - -	25.00
full page - - - - -	22.00 - - -	33.00

DEALER'S DIRECTORY

1" ad - - - - - \$6.00 for 6 months

Advertising copy must be in our hands by the 15th of each month to assure publication in our next issue. Advertisements containing reproductions will not knowingly be accepted unless clearly stated.

CAMBRIDGE CRYSTAL BALL assumes no responsibility for items advertised and will not be responsible for errors in price, description or other information.

Please address all correspondence to:

NATIONAL CAMBRIDGE COLLECTORS, INC.
P. O. Box #416
Cambridge, Ohio - 43725

PLEASE NOTIFY US IMMEDIATELY OF ANY CHANGE IN YOUR ADDRESS!

PLEASE enclose a Self-Addressed Stamped Envelope when requesting information.

Your Board of Directors have recommended the following amendments to the By-laws.

Whereas, it is deemed desirable to have as many members as possible in attendance at the annual meeting; and

Whereas, it is felt that a larger attendance will be possible after the close of the school year,

now, therefore, be it

Resolved, that Article I be amended to read:

Section 1 Regular Meetings. The regular meetings of the organization shall be held during the months of February, June, August, and November at such time and place as the Board of Directors shall designate.

Section 2 Annual Meetings. The annual meeting shall be held in June for the installation of elected directors and for the presentation of annual reports and transaction of other business. The term of directors shall officially begin thirty days after the close of business of the annual meeting. Charter directors shall hold office until their respective terms end, as per Article VII, Section 4 of the by-laws.

Resolved, that Article VI be amended to read:

Section 4 Budget and Finance Committee. This committee shall prepare a budget of the estimated income and expenses of the association for the year. In the month of May, each year, the Finance Committee shall cause an audit of the books to be made, and such statement shall be read to the organization at its annual meeting.

Resolved, that Article VII be amended to read:

Section 4 The Board of Directors shall consist of 12 members elected from the roll of active voting members. The term of office shall be for four years.

To provide for continuity of operations the original Board of Directors shall serve for the following terms:

- 3 persons for 1 year March 1973 to May 1974
- 3 persons for 2 years March 1973 to May 1975
- 3 persons for 3 years March 1973 to July 1976
- 3 persons for 4 years March 1973 to July 1977



Let's Get Acquainted

by Phyllis Smith



Here we are back again, introducing you this month to two of our newer members of your Board of Directors, Lynn Matchett Welker and David B. Rankin.

These two men not only have Cambridge glass collecting in common, but they were both born and raised in the small village of New Concord, Ohio, which is located just about eight miles west of Cambridge.

Lynn was born on September 7, 1948, and has lived his entire life in New Concord, Ohio. He is the only son of Lyle and Mary Welker, who are prominent, well known Antique dealers, having been in the Antique business for some 22 years. He has one sister, Kay Mears, who lives in Columbus, Ohio with her husband and two children Jimmy and Julia.

He graduated from John Glenn High School in 1966. He then attended Muskingum College in New Concord, Ohio, graduating in 1970 with a major in Music and a minor in History. He is an accomplished pianist and has a beautiful baritone voice.

Lynn is still single and lives at home with his parents, on Route #2, a short distance north of New Concord. He is the Manager of Margaret Lane Antiques, which is located at 2 E. Main St., New Concord, Ohio. As everyone knows, Lynn and his parents have co-authored four books on the subject of Cambridge Glass. He is currently writing the "Cambridge Rainbow" article for the CRYSTAL BALL.

Having been in the Antique business for so many years, the Welkers are quite naturally involved in collecting many items other than Cambridge glass, such as fine art glass, old tools, pottery, miniature childrens dishes, toothpicks and sugar shakers to mention just a few. They began collecting Cambridge seriously about fifteen years ago and now possess one of the most fabulous collections that one can imagine. The unusual is the rule -- not the exception in their home.

Lynn's interests are many and varied. Besides collecting Cambridge, he loves to play tennis and bridge, and of course attending as many auctions as possible is a favorite hobby, as well as a must for his business. He loves to travel and goes on several buying trips each year.

Having a great interest in music, Lynn was active in both high school and college in musical productions of all kinds. He was a member of the A Cappella choir and is presently a member of his church choir. He is a member of the W. E. Methodist Church where he serves as a member of the Administrative Board.

Lynn is looking forward with anticipation to an upcoming trip in March, when he will be traveling to New York with friends to attend the Metropolitan Opera for the first time.

Joining N.C.C. in January, 1975, Lynn became holder of membership card #371. He was elected to the Board of Directors in May, 1975. He has served on the 1975 Convention Committee and also helped with the 1975 Auction. He recently accepted the position of Chairman for the 1976 All Cambridge Glass Auction to be held in August and is a member of the Committee for the First Annual National Cambridge Collectors, Inc., Antique Show to be held hopefully in June of this year. He is also a member of the 1975-1976 Program and Entertainment Committee that has provided the excellent programs at our Quarterly Meetings.

David was born on August 2, 1942, the son of U.D. and Nellie Rankin. The Rankins are well known in the Cambridge and surrounding area, as Mr. Rankin is a Certified Public Accountant (retired) and they owned and operated the Highland Orchards for some twenty-five years. Dave is the youngest of the Rankins six children.

During his school years in New Concord, Dave was active as a member of the track team and the band (he played the Sousaphone). He was also a member of the Boy Scouts of America, attaining the rank of Star Scout. After graduation from New Concord High School in 1960, he left home to attend Ohio University at Athens, Ohio.

While at Ohio University he met his future bride and he and the former Susan Tarver, of Philadelphia, Pennsylvania, were married in December, 1964.

They both received a Bachelor of Business Administration degree from Ohio University; Dave in June, 1964 and Sue in January, 1965. After graduation Dave stayed on at O. U. for a year as a Research Graduate Assistant working on two accounting books.

In 1965 they moved to Dayton, Ohio where Dave was employed by Coopers and Lybrand as Staff Auditor and then Senior Auditor, until June, 1973. His years with them had a four year interruption (1966-1970), while he served in the U.S. Navy as a Communications Technician Second Class, in the Security Group as a Portuguese linguist.

"ACQUAINTED" Continued on page 6

Flower Holders

by Bill Smith

For want of more detailed information we will try a different approach in our Flower Holder information this month.

Having practically no facts on which to base our article, we instead turn to photos as a means of trying to convey information to you.

The first holder (Fig. 1 and Fig. 2) is one that came out during the late 1920's as Flower Holder #514. It had no descriptive name associated with it, so we have called it the Eagle flower holder due to the side view appearance (Fig. 1). There is a good chance that it was designed as another of the Hawk family of birds, but the topknot has the appearance of the Bald Eagle.

This holder also appears in the Bennett Book of Cambridge Glass (Plate 41, Row 3, Item 1). It is described as a 6 inch Penguin. A glance at Fig. 2 will show why this is a possible description.

This figure's design is very simple. A perched bird on a tree stump. All of which rises above a rather sharp edged Type 1 base. Overall this figure is 5 5/8 inches in height. The base contains a total of ten holes for the flowers.



FIG 1

FIG 2



FIG 3

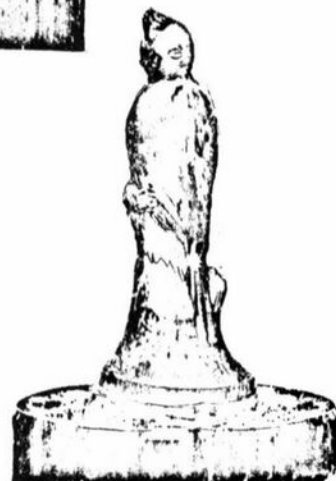


FIG 4

Compared to the Lady Figurals presented in former articles this holder is a real rarity. We are aware of only six at this time. The colors that have been seen are amber, peach blo (pink), emerald green, and crystal. This color range would seem to suggest the existence of a greater quantity of these holders. Perhaps this attempt at identification will help to bring them into view.

The second holder presented in this article has not been proven to be Cambridge. We have in the past been very reluctant to present any articles that we could not prove to be Cambridge. We feel that the similarities in this case at least warrant some consideration. See Fig. 3 and Fig. 4.

The base of this item is identical in style and size to that of the Eagle. The general theme is the same. The height is nearly the same, 5 3/8 inches.

We have reports of the existence of only four of these holders. All four appear to be Cambridge emerald green color.

We have had no success in identifying either the holder or the bird represented, consequently we will not hazard a name for this item. We would welcome any suggestion you readers might submit.

Collect Cambridge

notes from your EDITOR!

Stems

By Frank and
Vicki Wollenhaupt

Where does the time go? The Christmas Holidays are but a memory and now it's time to say Happy Valentine's Day to you all!! Life seems to whiz by at a very fast pace these days. I guess it has something to do with getting older -- but how can that be, when I still feel so young.

My notes for you this month are not earth shattering, but there are a few things that I would like to bring to your attention.

First of all, I want to make sure that all of you are aware of the fact that we have back issues of the CRYSTAL BALL available -- including the very first Issue, May, 1973. These are available to members at a cost of 70¢ each or 12 issues for \$7.00, and we even pay the postage. So, any of you new members, or older members who have lost some of your back issues, now's the time to write and order the ones you need.

As you will see elsewhere in this CRYSTAL Ball, our Study Group Advisor, Dave Rankin, has written an article for the purpose of encouraging additional Study Clubs. Why not give serious consideration to forming one in your area. Believe me, they can be a lot of fun and a lot more help. Why not write Dave, he'll help in every way he can to get you started.

Will you all do me a favor. Stop right now and take a look at the numbers in the upper right hand corner of your address label. This is the date of the LAST issue of the CRYSTAL BALL you will receive (without interruption) unless you send in your renewal by the 25th of that month. (For example: If 2-76 is in your corner, this February issue is your last one unless you pay your dues by February 25th.) It would be a big help if all of you that have 3-76 in your corner would go ahead and send your renewal dues in now. This would help us greatly, as we send a personally typed renewal form to everyone with their last issue - you could save us a lot of extra work. Please give this your consideration. We thank you!

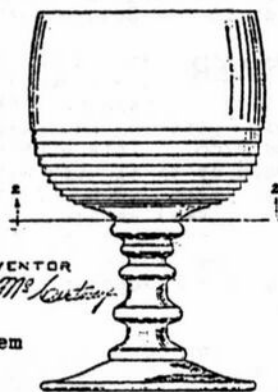
As you can see, we are missing a few of our regular articles this month. Dave Rankin, author of "Trademarks" and Dave McFadden, author of "Is It Cambridge" have both asked me to let you know they will be back with us soon. It seems they have exhausted their supply of information and must do some more research before they can write additional columns.

We had a nice letter from Gwen Shumpert who writes, "Gwen's Glassline", for the RAINBOW REVIEW GLASS JOURNAL, and we are hopeful she will write an article for us sometime in the near future. We are looking forward to this Gwen.

Since last month's column on the #1402 stem, I have had another thought brought to my attention. The #1402/100 can be found on the stem as in Figure #1 (January, 1976, CRYSTAL BALL). The #1402/150 and #1402/200 can be found on the Figure #2 stem. The only difference in the #1402/150 and #1402/200 is the shape of the bowl.

This month's stem is the other #1402 (Tally-Ho) stem. This stem is the heavier of the two. On October 11, 1932, Design patent number 87,932, was issued to W. C. McCartney. From the date of this patent we can determine that this was the first of the Tally-Ho stems. The patent was granted for a goblet or similar article.

GOBLET OR SIMILAR ARTICLE



INVENTOR

In the October, 1932 issue of China, Glass and Lamps, the #1402/1 stem is shown with the Imperial Hunt Scene etching on it.

TALLY-HO

The 1930-1934 Cambridge Catalogue shows the stem in the following sizes: #1402/1 - 18oz. goblet (etched Imperial Hunt Scene); #1402/2 - 14oz. goblet (etched Catawba); #1402/3 - 10oz. goblet (R. C. engraved #690); #1402/4 - 10oz. lunch goblet; #1402/7 - 6oz. tall stem tomato or orange juice; #1402/9 - 4½ oz. claret; #1402/10 - 4 oz. cocktail; #1402/13 - 1 oz. cordial; #1402/12 - 2½ oz. wine; #1402/8 - 5oz. low stem tomato or orange juice; #1402/11 - 4 oz. low stem cocktail or oyster cocktail; #1402/6 - 6½ oz. low sherbet; #1402/5 - 7½ oz. tall sherbet and #1402/20 - 4½ oz. sherbet.

This stem has been found in Carmen, Amber, Crystal and Forest Green.



QUESTIONS & ANSWERS

by Frank Wollenhaupt

? Is there any company that you know of, that is reproducing and/or reissuing the heavy pressed Marjorie pattern?

ANSWER: At this point in time, I will have to say No, not to my knowledge. I would imagine that all of the molds from the NearCut era have been destroyed.



? Did Cambridge have another pattern similar to the Chintz pattern?

ANSWER: According to the 1930-1934 Cambridge catalogue the Chintz pattern is plate etched #766. This etching is made up of flowers with leaves. The size of the flower (roses) varies a bit but all of them are the size of the flower in the Elaine and Rosepoint etchings.



One of the other two etchings that is confused a lot with the Chintz is plate etching #758. This etching is made up of flowers similar to the Chintz but has leaves by themselves and has three different stages of the flower in opening, instead of the single type in the Chintz.



The etching that is most often confused with Chintz, is Decoration #995. This decoration appears on Crown Tuscan only, in the 1930-34 Catalogue. This is the same decoration that appears in the Bennett and the Welker Color books as Chintz. This might show up in some later catalogues as Chintz but in the 1930-1934 catalogue, it is D/995.



"ACQUAINTED" continued from page 3

Moving back to the Dayton area in 1970 after his discharge from the Navy, both Dave and Sue received their certification as Certified Public Accountant in 1971. In June, 1973, Dave joined the staff of Tait, Inc. as Chief Accounting Officer and in January, 1975 he was elected Treasurer of that firm. Sue is presently employed by The Frank M. Tait Foundation for whom she was recently elected Treasurer.

The Rankins interest in Cambridge glass was sparked by Dave's brother Jimmy (an Antique dealer in Spotsylvania, Va.). During Thanksgiving weekend 1972, they went Antique shopping with him and ended up buying all of the then available books on Cambridge glass. After several months of study, they finally purchased a large Crown Tuscan nude stem comport. Since that time, their collection has grown into one of the best general line collections you could ever hope to find anywhere today. They have an especially interesting collection of various stemmed items.

Dave and Sue joined N.C.C. when it was first organized and are the holders of membership cards numbered 50 and 51. But even before N. C. C. was formed they had begun their research work into obtaining copies of patents for Cambridge glass and researching old magazines and copies of China, Glass and Lamps. They, with the help of the Wollenhaupts, are responsible for the vast amount of research material that appears in your CRYSTAL BALL each month. It all started when Dave wanted to learn more about Cambridge glass and he has been most kind and generous in sharing this information with all of us. The idea for this research belongs to the Rankins and we all owe them a great deal of Thanks.

In June, 1975 Dave was appointed to the Board of Directors to fulfill the unexpired term of Harry Allen. He is a member of and was instrumental in helping to form the Hokey-Pokeys Study Club. He has served on the 1974 and 1975 Convention committees, the 1974 and 1975 All Cambridge Glass Auction committees, helped conduct a NearCut Clinic in February, 1975, and is a member of the Budget and Finance committee. He and Sue donated their services as auditors for the May, 1975 Audit. Presently Dave is serving as Chairman of the Study Group Advisory committee and is an active contributor to the CRYSTAL BALL with his "Trademarks" article.

Dave's hobbies are photography, deer hunting in Wyoming and Alaska and golf. He is a member of the Ohio Society of Certified Public Accountants, the American Institute of Certified Public Accountants, the New Comen Society, Acacia Social Fraternity and he and Sue are both members of Beta Alpha Psi the National Accounting Honorary Fraternity.

With active, interested members like Lynn and Dave on our Board of Directors is it any wonder that our Club is growing and becoming a fine organization in which our members can take great pride? Please keep up the good work fellows!



Cambridge RAINBOW

by Lynn Welker

HELLO! This month I'm offering a color to cheer you up on a dreary, winter day - WINDSOR BLUE. I'm certain a piece of Windsor Blue would bring a little sunshine into everyone's day. I know it would brighten up mine.

Windsor Blue is a pale opaque, milky-blue that favors aqua just a little. The color varies from piece to piece in intensity from a very pale milk blue to a rich aqua blue. Windsor Blue has just recently been identified as the name for this color ---- it was previously referred to simply as Blue-Milk. Please be careful to distinguish this color from Azurite. It is a more pale and less vibrant color than Azurite, yet it is a very striking and unusual color.

Windsor Blue was introduced during the mid-1930's (probably 1935) and was discontinued well before 1940. It had a very short-lived production span which accounts for its rarity and desirability. It ranks high on the list of most Cambridge glass collectors. Not only is it a desirable color - it is a royal color - named after the royal family of England, the Windsors. Mr. Bennett (then President of Cambridge Glass) loved England, which may have influenced the use of this name for this beautiful color.

Its short production span is matched by its limited production in terms of different items in different lines produced. At this time, production of Windsor Blue known is almost entirely limited to the Seashell and Statuesque lines. The items known are: Nude Lady center bowl, Nude Lady candlestick (with or without crystal bobeches & prisms), Nude Lady compote (7" - 8" high size), the 8" and 10" Seashell center bowls (three footed), the 8" oval Seashell bowl (four footed), several sizes of Seashell compotes including the covered Seashell candy compote, the 7½" Seashell vase in the shape of a Nautilus shell (See Figure #1), the 2½" and 4" Seashell ashtrays (both sizes of these have been seen in a very few rare instances with candle cups on the bottom of the inside), the small (3½" long) cigarette box with dolphin feet, and the 10" Seashell footed cornucopia vase.



FIGURE #1

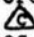
The only exceptions known that are not in the Seashell or Statuesque lines, are the



FIGURE #2

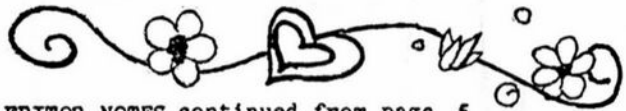
Pear Whimsey (probably a Christmas ornament) and the two-light ring candlesticks (see Figure #2). Pieces that have not been seen but that are probable are: the small (5½" high) Nude Lady compote, the large (5" long) Seashell, dolphin footed cigarette box, and the small, footed Seashell vase in the shape of a Nautilus shell. Please

let me know if you have seen any of these or any not listed, so that these pieces can be published in your CRYSTAL BALL.

All of the compotes seen to date, in this color, have been signed, including the large Nude Lady compote -- although this is rarely signed in Crown Tuscan. The signature is the molded  which appears on the inside of the pieces right below the flat part of the shell. The other pieces are not signed.

There are many plain vases in various shapes and sizes in a very similar color, but most of these that are known should be attributed to the McKee Glass Company. Although Cambridge made similar shapes in these vases, the current thought is that they are McKee.

I hope this New Year brings you a piece of WINDSOR BLUE to brighten your day and your collection. Happy Hunting!



EDITOR NOTES continued from page 5

I promised I would let you know how we fared with Santa this year and I must say we did very well indeed! Would you believe he brought us a small size Bunny candy box, a small crystal Bashful Charlotte, an ebony pencil dog, a Marjorie NearCut tankard, an amber three footed hair receiver (marked), and a pair of Rams Head candlesticks. That Santa sure does know his Cambridge!

I understand he visited many other Cambridge collectors this year, leaving such choice items as an amber Turkey, a pair of pouter pigeon and scotty dog bookends, a child's set in dark green, a nude stem Carmen water goblet, a console set - frosted with flower decals and someone even received a sweet potato vase.

However, I have it on good authority, that toward the end of his route the little old man got a bit confused. It seems he left one of our members a Heisey (whoops, guess that will cost me a quarter) Scotty Dog. Well, I guess he can't be perfect all the time.

Till next month, I wish you all a very Happy Valentine's Day and may your Sweetheart be just that, and give you another piece of Cambridge Glass.

NEARCUT Patterns



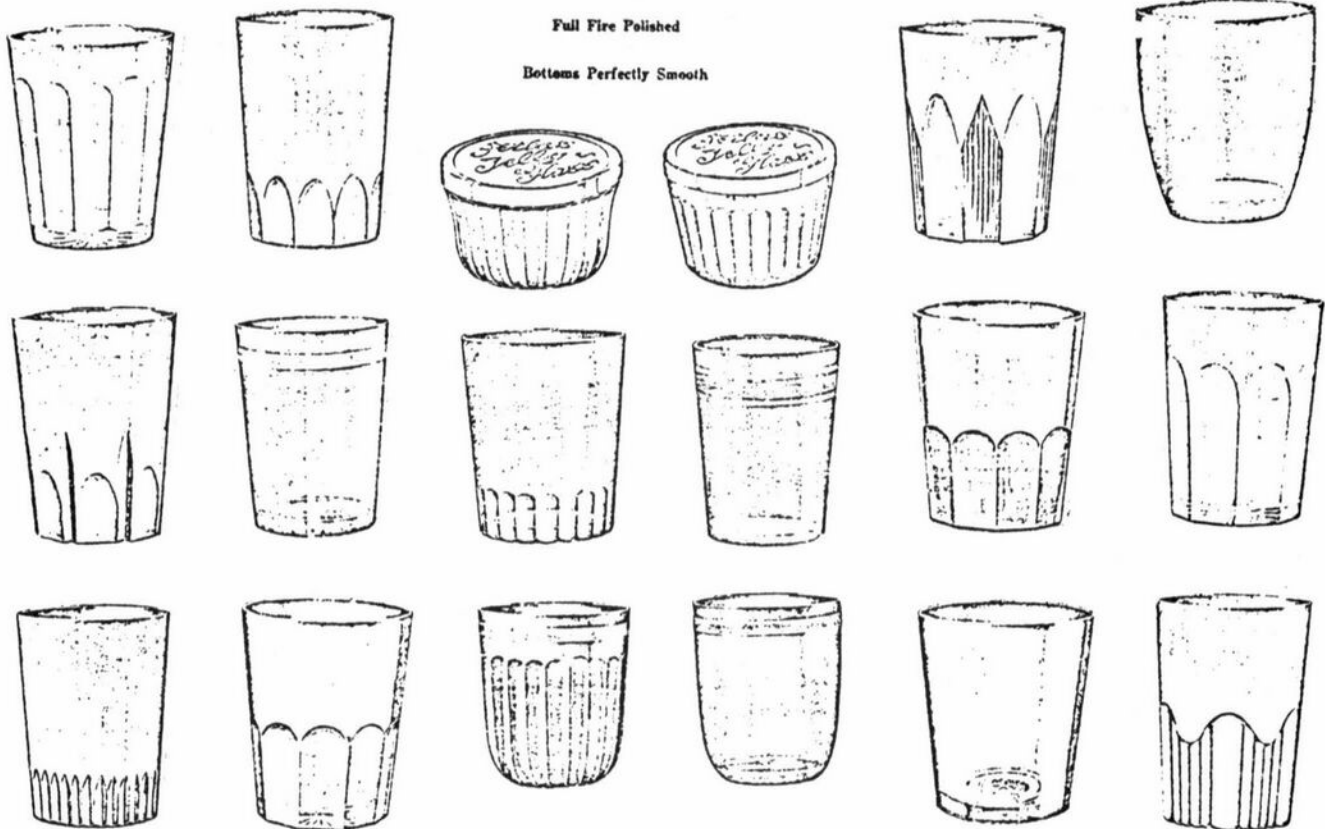
by Phyllis Smith

Did you know that the Cambridge Glass Company made Jelly glasses?? Well, they did and pictured on this page are several of the many that they produced. Big Deal, you say!! I'm sure many of you couldn't care less. After all, how can a lowly Jelly glass ever hope to compete with all the truly lovely items that the Cambridge Glass Company produced during their many years in business? Truth is, they can't!!

But, on the other hand, give it a little thought. Dream along with me for a minute or two, -- visualize if you can, your very own pantry shelf, lined with all those good Jellies and Jams that you put up for your family, with love and devotion -- and then - Oh Yes!! Every one is in a Genuine, NEARCUT, Hand Made, CAMBRIDGE GLASS Jelly Jar!!

Now then, you tell me, is that CLASS or is that CLASS? I think it just has to be!!

TANK TUMBLERS, JELLIES AND SODAS



Full Fire Polished

Bottoms Perfectly Smooth

All Jellies are Made with Glazed Edges

These Jelly glasses are pictured in an early NearCut Catalogue. We're not sure of the date, but we believe it to be around 1910 to 1916, or at least reasonably near to that time period.

Now is the time to start looking for these beauties. It is doubtful that many dealers will have much of an interest in Jelly jars, so they should be reasonably priced. The best places to look for them would undoubtedly be Flea Markets and Garage Sales.

Good Luck in your search! Believe me, your search will not be an easy one -- but the rewards will be worth all your time and effort. I'm just hoping that one of you will show up at our Convention this year with a Genuine, NEARCUT, Hand Made, Cambridge Glass Jelly Jar ----- full of jelly, Of Course!

STUDY Club News

Study groups are important. That importance cannot be overstressed. Each month we eagerly await the next issue of the Crystal Ball for the new information we hope to find. The editor and staff of writers constantly strive to provide all the new and useful information possible. But after reading each issue one or more times, how much of the new information is recognized and, more importantly, retained by the reader?

Any educator will tell you that knowledge is the assimilation of facts which must be communicated and experienced by several different means for maximum retention. The Crystal Ball can provide limited words and two-dimensional black and white pictures. But what about feel, color, the third dimension and the true beauty of a piece of Cambridge glass?

A study group and the environment it provides is a very important phase in effectively reinforcing and furthering the information provided in the Crystal Ball. It has been a frequent occurrence in existing study groups for one member to obtain a piece in a certain line and, in a few short months, more pieces are acquired within the group. Why? Recognition made possible from the experience of seeing and examining the actual piece.

How many of you readers can describe the main characteristics of a piece of glass from the La Touraine line? I suspect the most common reaction to this question is: the WHAT line? and a visual blank. If this was your reaction and you are curious, see Touch of History, May, 1975 Crystal Ball.

My point is that the Crystal Ball can only go so far in expanding the knowledge of club members. We strongly urge the formation of study groups to pick up where the Crystal Ball stops and the Study Group Advisory committee will be happy to provide all possible assistance.

The following members are interested in forming study groups. Other interested members should write to these members:

c/o National Cambridge Collectors
Box 416
Cambridge, Ohio 43725

CLEVELAND, OHIO area
Stephen and Susan Horner

ST. LOUIS, MISSOURI area
Mr. and Mrs. Donald Rogers

SAN FRANCISCO, CALIFORNIA area
Mary Fristoe

PALMYRA, ILLINOIS area
Carroll Woolfolk

----- HOKEY - POKEYS -----

The December meeting of the Hokey-Pokeys Study Club was held in the home of Joy and Dave McFadden, Galena, Ohio. There were eight members and two guests present.

The highlight of our meeting, besides our fellowship and lovely candlelight dinner, was our Christmas gift exchange. We have a rule that each couple is to spend as near \$5 (definitely no more) as possible for a gift of Cambridge glass. We have a whole year to accomplish this and it takes that long to come up with something really nice for \$5.

This year we succeeded in finding the following items: a pair of Rams Head candlesticks in crystal; two stemmed goblets, one all gold crystal, the other crystal; a pair of light green candlesticks with an early etching; two Georgian sherbets, one gold crystal, the other moonlight blue; and a Chelsea celery in crystal.

Our next meeting will be held February 1, 1976, in the home of Phyllis and Bill Smith, Springfield, Ohio.

----- CAMBRIDGE SQUARES -----

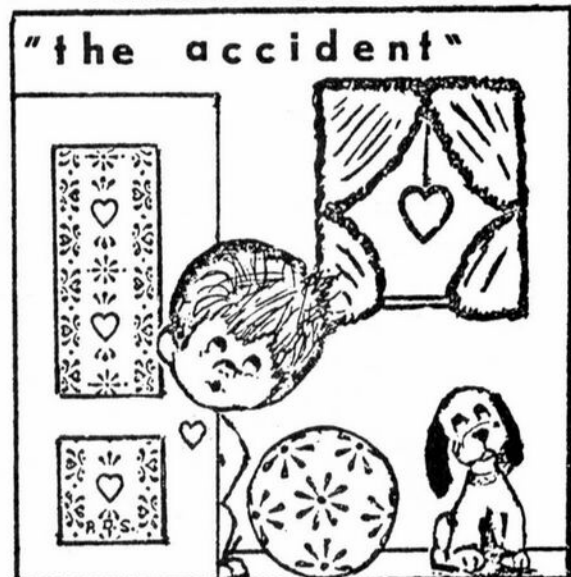
The regular meeting of the Cambridge Squares Study Club was held on December 12, 1975, in the home of Roy and Doris Isaacs. There were twelve members present.

The topic of discussion was stems. John Wolfe led the discussion and displayed over forty different stemmed pieces.

The prize, a Carmen Heirloom luncheon plate, was won by Charles Upton. Delicious refreshments were served.

The next meeting will be on January 23, 1976 at the home of Marybelle Moorehead.

MARKO and PUPPY



Hey Mom! You know that naked lady holding the red ashtray you told me not to touch? Well, I didn't, but my ball....!

COLLECTOR'S HAVEN

135 Cynthia Street ----- Heath, Ohio -- 43055

Evelyn M. Allen --- 614-522-1635

SPECIALIZING IN CAMBRIDGE GLASS!

REFERENCE FOR THE FOLLOWING: WELKER REPRINT #1

# 1--Pair 8" Dolphin Candlesticks, Crown Tuscan, pg. 6, #50 -----	\$195.00
2--Pair 7" Candlesticks w/prism, Moonlight Blue, pg. 6, #70 -----	35.00
3--3 piece Smoker Set, Ebony, pg. 13, #1714 -----	35.00
4--9 oz. Georgian Tumblers, Moonlight Blue, pg. 15, #319 (7) ea. ----	7.00
5--10" Cornucopia Vase, Crown Tuscan, pg. 16, #3900/575 -----	65.00
6--Same as #5 except has gold trim -----	75.00
7--10" Cornucopia Vase, Emerald Green, pg. 16, #3900/575 (2) ea. ----	35.00
8--Miniature Urn, Carmen, pg. 21, #MV 102 -----	25.00
9--32 oz. Decantor w/6 loz. Cordials, Carmen, pg.22,#3400/92 & 1341 -	80.00
10--Pristine 5 pc. Ash Tray Set, Assorted Colors, pg. 25, #728 -----	35.00
11--Statuesque Figure Ash Tray, Carmen, pg. 26, #3011 -----	80.00
12--Same as #11, Moonlight Blue -----	95.00
13--Same as #11, Pink -----	95.00
14--Statuesque Figure Cigarette Box & Cover, Royal Blue; pg.27,#3011 -	90.00
15--Cigarette Holder, ash tray ft., Carmen, pg. 28, #3400/144 -----	32.00
16--Same as #15, Amber -----	25.00
17--Heron Figure Flower Holder, 9", Crystal, pg. 32, #1136 -----	35.00
18--4" Novelty Basket, Crystal, pg. 34, #1506/1 -----	14.00
19--3 Compt. Candy Box & Cover, 8", Royal Blue, pg. 42, #3500/57 ----	65.00
20--Same as #19, Moonlight Blue -----	35.00
21--Statuesque 4½ oz. Claret, Crystal Nude, Amber Top, pg. 45 -----	45.00
22--Same as #21, Royal Blue Top -----	55.00
23--Same as #21, Topaz Top -----	110.00
24--Statuesque 1 oz. Brandy, Crystal Nude, Amethyst Top, pg. 45 -----	40.00
25--Same as #24, Mandarin Gold Top -----	40.00
26--Same as #24, Dark Amber Top -----	40.00
27--Same as #24, Dark Green Top -----	40.00
28--Same as #24, Royal Blue Top -----	65.00
29--Same as #24, Carmen Top -----	65.00
30--Same as #24, Very Pale Pink Top -----	65.00
31--Same as #24, Very Light Amber Top -----	65.00
32--Seashell 8" Comport, Royal Blue, Signed, pg. 46, #12 -----	90.00
33--Seashell 4½ oz. Seafood Cocktail, Crown Tuscan, pg. 46, #110 -----	38.00
34--Same as #33, Crystal w/Moonstone Finish -----	25.00
35--Statuesque 5" Comport, Crown Tuscan w/Amber Rose Deco., pg.46,#10-	110.00
36--Same as #35, Crown Tuscan w/ Gold Trim -----	80.00
37--Statuesque 7" Comport, Crystal Nude, Amber Top, pg. 46, #11 -----	80.00
38--Same as #37, Moonlight Blue Top -----	95.00

REFERENCE FOR THE FOLLOWING: WELKER REPRINT #2

#39--7 piece Decanter Set, Milk Glass, pg. 1, #W 71 -----	\$145.00
40--Girl Figure, Milk Glass, pg. 3, #W 120 -----	85.00
41--Individual Size Sugar & Cream, Royal Blue, pg. 19, #3500/15 -----	45.00
42--Ind. Martha Sugar, Cream & Tray, Mandarin Gold, pg. 19, #252 -----	28.00
43--Caprice 8½" Vase, Royal Blue, pg. 35, #343 -----	75.00
44--Mount Vernon 12" Celery & Relish, Royal Blue, pg. 39, #104 -----	65.00
45--Mount Vernon 11½" Bowl, Royal Blue, pg. 39, #128 -----	42.00
46--7 oz. Tall Sherbet, 3111 Line, Carmen, pg. 52 (2) ea. -----	18.00
47--7 oz. Tall Sherbet, 3500 Line, Carmen, pg. 56 (12) ea. -----	22.00
48--2½ oz. Wine, 3500 Line, Carmen, pg. 56 (6) ea. -----	28.00
49--Fingerbowl, 3500 Line, Carmen, pg. 56 (9) ea. -----	6.00
50--Tally-Ho 5" Plate, Carmen, no reference (10) ea. -----	6.00

POSTAGE AND INSURANCE EXTRA!

CY YOUNG
Phone (314) 434-3614 12823 WENLOCK DRIVE, ST. LOUIS, MISSOURI 63141

CAMBRIDGE GLASS

Prices each. Shipping & Insurance included in price. Satisfaction Guaranteed.
REFERENCES: Bennett; Welker catalog reprints I & II; McLean catalog reprint.

Qty.	Item	Reference	Price
2	11-oz. goblet, 6" high, #1066 (AURORA) pattern, AMETHYST bowl, CRYSTAL foot.	WC-II-51	8.00
2	8" Horn of Plenty, #577, PRISTINE pattern, MOONLIGHT BLUE.	WC-II-26	18.00
1	2-handled tray, 16" x 11", #3900 pattern, etched ROSEPOINT, CRYSTAL.		22.00
1 set	Creamer & sugar, #3500/14, GADROON pattern, etched ROSEPOINT, CRYSTAL.	WC-II-19	23.00 set
1	Oval bowl, 8½" x 4-3/4" x 3½" high, #SS31, 4-footed, SEASHELL pattern, CROWN TUSCAN.	McLean-30	55.00
1	7" ivy ball, #1066, AMBER ball with CRYSTAL foot.	WC-I-16	24.00
1	Nappy, 5½" x 2-5/8" high, flared 4 sides, GEORGIAN pattern, CARMEN.		15.00
1	8½" ivy ball, ROYAL BLUE ball with CRYSTAL ring stem and foot.	B-37/3/1	29.00
4 set	1" individual salt, #1525, with paper label, in original box with miniature WESTMORELAND STERLING spoon, CRYSTAL.	WC-I-24	9.00 set
1	Nappy, 5½" x 2-5/8" high, flared 2 sides, GEORGIAN pattern, CARMEN.		15.00
6	Goblet, #3798, 5½" high, CAMBRIDGE SQUARE pattern, CRYSTAL.	McLean 36A B-58/3/8	7.00
9	Sherbet, #3798, 4" high, CAMBRIDGE SQUARE pattern, CRYSTAL.	McLean 36A	6.00
8	9-oz. goblet, 7½" high, #7966 pattern with leaf cutting, CRYSTAL.	McLean 156	6.00
8	6-oz. tall sherbet, 6-3/8" high, #7966 pattern with leaf cutting, CRYSTAL.	McLean 156	6.00
8	4-oz. claret, 5" high, #7966 pattern with leaf cutting, CRYSTAL.	McLean 156	6.00
15	Rock crystal goblet, #3790, 6" high, LYNBROOK pattern, CRYSTAL.	McLean 114B	8.00
8	Rock crystal sherbet, #3790, 4-1/8" high, LYNBROOK pattern, CRYSTAL.	McLean 114B	7.00
1 set	Creamer & sugar, #3900/41, etched ROSEPOINT pattern, CRYSTAL.		24.00 set
1	8½" swan, #1043, CRYSTAL.		42.00
2	6½" swan, #1042, CRYSTAL.		28.00
8	8" round plate with cut floral design, EMERALD, marked.		5.00
1	Ice bucket, #851, chrome handle and tongs, etched PORTIA pattern, CRYSTAL, marked.	WC-I-63	19.00
1	Low footed compert, #3400 line, 5-7/8" x 3" high, etched PORTIA pattern, CRYSTAL.		14.00
1	5½" compert, #3900/136, etched PORTIA pattern, CRYSTAL.		15.00
1	3-compartment handled relish dish, #3400/91, etched	WC-I-61	17.00
1	4-footed bowl, #3400/160, 11-3/4" x 5" high, crimped edge, etched PORTIA pattern, CRYSTAL.	WC-I-61	24.00
1	7" relish dish, #3900/123, etched PORTIA pattern, CRYSTAL.		8.00

HERITAGE ANTIQUES

Route #5 ----- Cambridge, Ohio -- 43725

D. Isaacs ---- 614-439-3241

MARDI GRAS LINE

4 White Cloud ftd. Goblets ----- Write
4 White Cloud ftd. Sherbets ----- or
Also have Blue pieces ----- Phone

HEATHERBLOOM

Ice Tea, #3122 stem & foot,
Crystal (3) ea. ----- \$ 18.00

ROYAL BLUE

Goblet, #3122 stem & foot,
Crystal (1) ----- 18.00

RUBY

Georgian Sundae (4) ea. ----- 8.00

CAMBRIDGE SQUARE - PLATINUM TRIM

Ice Tea (3) ea. ----- 6.00
Cocktails (8) ea. ----- 6.00
(All 11 for \$50.00)

MOONLIGHT BLUE

Pitcher, Gyro Optic, ice lip,
80 oz. (1) ----- 35.00
Plates, 8½", signed Decagon
(3) ea. ----- 3.50
Plates, 7½", signed Decagon
(3) ea. ----- 3.00

BLUE WILLOW

Dinner Plate (1) ----- Write
or
Phone

EBONY

Martha Washington single
Candleholders, pair ----- 20.00
Bowl, 12½", signed Decagon,
w/Crystal Figure Flower
holder ----- 85.00
(All 4 pieces \$95.00)

LIGHT GREEN (EMERALD)

Cup & Saucer, signed round (1) - 4.00
Vase, 9½", similar to Stratford
(1) ----- 25.00

CROWN TUSCAN

Vase, 8½", ftd. (1) ----- 28.00
Seashell Salad Bowl w/14"
Underplate (1) ----- 97.00

PINK CLEO #3077

Tall Champagne or Sherbet
(4) ea. ----- 7.00
Same - rim damage (3) ea. ----- 2.00
Tumbler, ftd. (1) ----- 6.00
Same - rim damage (7) ea. ----- 2.00
Plates, 8½", signed (8) ea. ----- 5.00

AMBER

Ice Cream Set, signed Decagon
w/Grape etching. (Deep bowl,
12½" underplate or tray and
6 plates) Set ----- 65.00

Sherbets, Amber foot & stem,
Crystal bowl. Basketweave
type pattern (8) Set ----- 25.00
Dresser Jar & Lid, ftd., cut
pattern (1) ----- 12.50
Colognes, match above - minor
damage, pair ----- 18.00
Plates, 8½", unknown etching,
(5) ea. ----- 3.00
Cups, match above (4) ea. ----- 2.50
Tray, 10", center hdl., #704
etching (1) ----- 10.00
Cup & Saucer Sets, #3400 (2) ea. 4.00
Saucers only as above (2) ea. -- 1.00

CANDLELIGHT

Candleholder, 2-lite (1) ----- 15.00

ELAINE #3500 STEM

Tall Goblets (8) Set ----- 75.00
Low Sherbets (8) Set ----- 50.00
Plates, 8½", #3900 (8) Set ----- 45.00
Goblets, #3900 (2) ea. ----- 10.00
Vase, 12" Ring Stem (1) ----- 25.00
Plates, Salad, Round (4) ea. --- 5.00

CAPRICE #300, CRYSTAL

Cocktails (6) Set ----- 54.00
Cocktail - slight damage (1) --- 4.00
Tall Sherbet (1) ----- 8.00
Tall Sherbet - w/scratch (1) --- 6.00
Wine, original Paper Label (1) - 9.00

ROCK CRYSTAL MONTROSE CUTTING

Tall Champagne or Sherbet
(6) Set ----- 50.00
Low Sherbets (6) Set ----- 39.00
Cocktails (2) ea. ----- 9.00

CHANTILLY

Martha Sugar & Cream (Set) ---- 19.00
Martha Cream only (1) ----- 9.00

MISCELLANEOUS ALL CRYSTAL

Rondo Oil (1) ----- 12.50
Virginian Cake Salver (1) ----- 32.00
NearCut Cake Salver - shows
wear (1) ----- 10.00
NearCut Open Salt #2504 (1) --- 5.00
Cascade ftd. Tumbler (1) ----- 5.00
Martha Washington ftd. Ice
Tea (1) ----- 6.00
Martha Washington ftd. Tumbler
worn (1) ----- 4.00
Mount Vernon Juice-worn (1) --- 4.00
Gadroon Plates, 8½" (6) Set ---- 18.00
Plates, B & B, Round polished
bottom (6) Set ----- 10.00
Bowl, 7", Round, Shallow, bottom
polished (1) ----- 5.00

Epergne, Arms, Bobeche, bowls,
etc. ----- Write
or
Phone

MY WANTS

Chantilly; Mount Vernon; Dark Emerald
Green; also Pretty things! THANKS

Perfect unless noted. Satisfaction Guaranteed. Want lists welcomed.
Shipping & Insurance Extra. Ohio Residence Add 4½% Sales Tax.

We accept MASTER CHARGE and BANKAMERICARD!

LETTERS FROM *You!!*

(Editors Note: Thought the following letters might be of interest to you. We will print more as space allows. If you are interested in this kind of a column, please let us hear from you.)

"This seems an opportune time to tell you all how much we have enjoyed our short association with the Club, at the past Convention, Auction, and through the CRYSTAL BALL. Your talents and much hard work are appreciated and certainly have been our greatest aid to our learning and help in our collecting. Best Wishes for a happy '76. Sincerely Bud and Ruth Burger, Illinois."

"Just a short note to say congratulations on your paper. You are doing a great service for all of us. Regarding the first class mailing, I would be glad to pay extra for this, as the November copy arrived one week later than the October copy. If it is not feasible to continue the first class, others may also wish to pay the additional cost of first class mailing in order to receive their paper earlier. It's an idea you might consider. Sincerely, Ruth McRae, Wa."

As you can see, we are trying a new printing method this month. If it is satisfactory, what we save in printing costs, should allow us to continue sending the CRYSTAL BALL 1st Class Mail ----- Editor



Classified WANTED

WANTED: Stopper for 4 oz. crystal Caprice oil cruet; one individual creamer in crystal Gadroon with Rosepoint etching and a crystal candlestick made to hold a bobèche w/prisms and bud vases in center holder (Ref: Bennett Color Book, plate 16, line 2, #3 & #5) with Candlelight etching. ---Mr. & Mrs. R. Stephen Horner, 9344 Gerald Dr., Streetsboro, Ohio--44240 - Phone: 216-626-4374.

Rainbow Review
GLASS journal
"KEEPING GLASS COLLECTORS INFORMED"

A SPECIAL OFFER FOR YOU!

An introductory three-month subscription to RAINBOW REVIEW GLASS JOURNAL for \$1.25 has been recommended for you by:

National Cambridge Collectors, Inc.

(Or send \$5 for one year [12 issues] and receive 3 extra months absolutely FREE!)

The RAINBOW REVIEW GLASS JOURNAL is dedicated to "keeping glass collectors informed" on every facet of the field - news stories, research, trademarks, respected columnists, reproductions, features, books available and reviews, a variety of ads (including a section for "new" glass), show calendar, club news, shop directory, questions & answers, interviews, mail and more! 48 pages printed magazine style on glossy paper with large, clear photographs.

— IF YOU COLLECT "ANY" GLASS YOU NEED THE RAINBOW REVIEW GLASS JOURNAL! —

Write your name, address, city, state and zip code on reverse side. Enclose payment and mail to: RAINBOW REVIEW, P.O. Box 2315, Costa Mesa, CA 92626.

THE COLLECTIQUE SHOP
4003 Old Columbus Road
Springfield, Ohio--45502
Phone-513-323-3888

FOR SALE

Wildflower

3121 Stewware (Ref. WII-53 or McL-85)

12 oz Ftd. Tumbler or Ice Tea (2)	\$11.00
10 oz Goblet (5)	11.00
6 oz Tall Sherbet (2)	10.00
3400/62 8" Lun. Plates (7) (WI-68*)	7.00
3900/41 Sugar & Cream (McL-86)	14.00
3900/54 10" 4 ftd. Bowl, Flared (McL-87)	10.00

* shape only in reference.

All prices each - Ohio Res. add 4½% S. Tax

DEALERS



DIRECTORY

<p>ANTIQUÉ ALLEY 24815 Broadway Bedford, Ohio - 44146 216-232-7739 Marie Spagnola CAMBRIDGE GLASS----ROYAL DOULTON</p>	<p>BLACK ROOSTER ANTIQUES 1018 Clark Street Cambridge, Ohio--43725 614-439-2549 ----- M. Sipe CAMBRIDGE GLASS - GENERAL LINE</p>	<p>COLLECTOR'S HAVEN 135 Cynthia Street Heath, Ohio -- 43055 614-522-1635 SPECIALIZING IN CAMBRIDGE GLASS</p>
<p>GREAT EXPECTATIONS! 441 Mt. Vernon Road Newark, Ohio - 43055 Robert Coyle ----- 614-349-7362 ANTIQUES AND DECORATIONS</p>	<p>HAROLD AND JUDY'S ANTIQUE SHOP 437 North 8th Street Cambridge, Ohio -- 43725 614-432-3045-Open by Appointment SPECIALIZING IN CAMBRIDGE GLASS!</p>	<p>HERITAGE ANTIQUES Rt. #5, Cambridge, Ohio - 43725 614-439-3241 TAKE N.8th ST.RD.(County Rd.#33) TURN LEFT AT RAILROAD TRACK.</p>
<p>HOBBY HOUSE ANTIQUES Rt. #1, Cambridge, Ohio - 43725 614-432-6971 - Frank & Lena TAKE RT.#209 W.FROM CAMBRIDGE TO RT.#658 - NORTH 1½ MILES.</p>	<p>MARGARET LANE ANTIQUES 2 E. Main Street New Concord, Ohio--43762 Lynn Welker ----- 614-826-4418 CAMBRIDGE GLASS MATCHING SERVICE</p>	<p>PRESIDENTIAL COIN & ANTIQUE CO. 6222 Little River Turnpike Alexandria, Virginia - 22312 Gail B. Levine ---- 703-354-5454 WANT LISTS SOLICITED-OPEN 6 DAYS</p>
<p>A. SPRINGBORN P. O. Box E. G. #962 Melbourne, Florida - 32935 305-254-7439 BUSINESS BY MAIL, SHOWS & PHONE!</p>	<p>THIS 'N' THAT PLACE 101 South Street Chagrin Falls, Ohio -- 44022 Lue Koerper ----- 216-247-4938 CAMBRIDGE GLASS - OPEN BY CHANGE</p>	<p>WAYSIDE ANTIQUES 2290 East Pike Zanesville, Ohio - 43701 614-453-4776 Maxine Ferguson CAMBRIDGE GLASS - OPEN BY CHANGE</p>

NATIONAL CAMBRIDGE COLLECTORS, Inc.
P. O. Box 416
Cambridge, Ohio - 43725

Address Correction Requested

FIRST CLASS MAIL

Quarterly Meeting

At Cambridge February 15th 1:30 P.M.
Will be held at the offices of
Columbia Gas of Ohio
202 Highland Avenue
PARK IN REAR - USE BACK ENTRANCE
Subject - Cambridge FIGURALS
Also Show & Tell

14

Reprinted 4-81