

e Crystal Ball

Published monthly (except July) by National Cambridge Collectors, Inc. to encourage and report the discovery of the elegant and boundless product of the Cambridge Glass Company of Cambridge, Ohio

Issue No. 397

June/July 2006

Breaking Glass News

Episode 2: Don't Ship Glass in a Wooden Box

by Mike Strebler

Breaking Cambridge glass evokes many different emotions. A crushed spirit is the most common result but there always seems to be something else interwoven. Episode 1 told the story of a life long glass friendship surrounding a broken comport. This episode has a human interest element but is probably best described as a horror story with a lesson in shipping. The breakage in this episode has to be a modern day record. My claim is the most Cambridge nude stems broken in a single shipment. If another member reading this can best my claim I'm not sure I can bear to hear about it.

The time is in the early 1980's and I am just starting to appreciate the wonder of Cambridge glass. I bought the 1930-34 catalog, still my favorite catalog, and spent many hours pouring over the pictures. I could only imagine what the actual pieces looked like since I had actually seen very few. The 30-34 catalog has a page in it which every nude collector knows by heart, Plate 34-2. The page exhibits almost the entire 3011 line.

The next part of the story involves a women. I'm not sure how significant



it is to the story but it is a great line for any writer. A high school friend of mine and I were catching up while she was home from medical school. I was sharing my new found love of Cambridge glass and showed her the 30-34 catalog. When we got to Plate 34-2, I was faced with a startling revelation. She had recently seen nude stems in a mall near Philadelphia. Not one or two, a lot of nude stems. She gave me sufficient clues as to the whereabouts so that I was able to track down the seller.

When I contacted the seller, I had found my treasure chest. This was a big time find. The seller had twenty-five nude stems with Royal Blue tops. I wanted them all but had to figure of a way to do the deal since the total price involved a fairly heavy weight. Table goblets were \$45 each, Champagnes \$35, and cocktails \$25.

The total price was around \$500. Keep in mind I had seen a Royal Blue Flying Lady bowl at the NCC show a year or so earlier for \$600. So my nude purchase was a fairly significant financial transaction. The answer was a partner.

My day-to-day collector buddy was my Uncle Johnny. Uncle Johnny was my dad's brother and we lived next door to him. Uncle John collected a lot of things but elegant glass wasn't really his thing. He had depression glass, Degenhart, tire ashtrays, swanky swigs, Anchor Hocking, and mechanical monkeys that could shake a martini. The list would go on and on. Uncle Johnny's stated goal was to one day sell this marvelous assortment of items but we all secretly believed his only real goal was to enjoy the hunt. He could spot a garage sale jewel a mile away. Saturday afternoons Lisa and I would return from the field to Uncle Johnny's house with bags and boxes and have a wonderful show and tell. Uncle Johnny was the logical choice as a partner in the great Philadelphia nude deal.

continued on page 5

Register for Convention Today!

National Cambridge Collectors, Inc.

PO Box 416 Cambridge, OH 43725-0416

Membership

Patron: Single \$22; plus 1 Associate \$25

•Additional Associate memberships are available at \$3 each.

Benefactor - Century: \$100

Benefactor - Mardi Gras: \$250

Benefactor - Japonica: \$500

President's Circle: \$1,000

•All Benefactor & President's Circle memberships include Associate Memberships for all adults sharing the residence of the Master Member.

•President's Circle includes Convention registration and a copy of each new NCC book, when published.

Address Changes

Please send address changes to:

Membership - NCC
PO Box 416
Cambridge, OH 43725

or by e-mail to:

lin26@hocking.net

Board of Directors

Linda Adkins	Cindy Arent	Shelley Cole
Larry Everett	Ken Filippini	Rick Jones
Sharon Miller	Mark Nye	Mike Strebler
Lorraine Weinman	Lynn Welker	Frank Wollenhaupt

Officers & Committee Chairs

President	Ken Filippini
Vice-President	Rick Jones
Secretary	Linda Adkins
Treasurer	Sharon Miller
Sergeant-at-Arms	Shelley Cole

Acquisitions Committee	Lynn Welker, Chairman
Archives Committee	Mark A. Nye, Archivist
Budget & Finance Committee	Mike Strebler, Chairman
By-Laws Committee	Alex Citron, Chairman
Crystal Ball	Alex Citron, Executive Editor
Endowment Committee	Rick Jones, Chairman
Facilities Committee	Carl Beynon, Chairman Joe Miller

Grants & Fundraising Committee	Sharon Miller, Chairman
Long-Range Planning Committee	(vacant)
Membership Committee	Linda Adkins, Chairwoman Freeman Moore, Development Chairman

Museum Committee	Cindy Arent, Chairwoman
Nominating Committee	Rick Jones, Chairman
November Program Committee	David Ray, Chairman
Projects Committee	Bill Hagerty, Chairman
Publications Committee	Mark A. Nye, Chairman
Publicity Committee	Lorraine Weinman, Chairwoman
Study Groups	Judy Rhoads, Advisor
Technology	Dennis Snyder, Chairman David Adams, Webmaster Alex Citron, ebay Store

Auction Committee	Dorothy Rieker Squeek Rieker Lynn Welker
-------------------	--

Convention Committee	Shelley Cole, Chairwoman
Glass Show & Sale	Mary Beth Hackett, Co-chairwoman Joy McFadden, Co-chairwoman
Glass Dash	Larry Everett, Co-chairman Susan Everett, Co-chairwoman

Director of Finance	Dennis Snyder
Books & Merchandise Fulfillment	Linda Adkins

National Museum of Cambridge Glass



Located at 136 S. 9th Street in
downtown Cambridge, OH

Wed-Sat 9am - 4pm • Sun Noon - 4pm
Admission: \$3, Seniors & AAA members \$2
NCC Members & children under 12 FREE

Contacts

NCC Museum [open April thru October only]
(phone) (740) 432-4245
(fax) (740) 439-9223

Ken Filippini, President (201) 670-0990
e-mail: lobstrboy1@aol.com

Linda Adkins, Secretary (740) 432-2444
e-mail: lin26@hocking.net

Alex Citron, Crystal Ball Editor (434) 296-2531
e-mail: apcpenguin@adelphia.net

Websites

- **NCC WEBSITE**
www.CambridgeGlass.org
- **NCC WEBSITE - MEMBERS ONLY SECTION**
www.CambridgeGlass.org/NCCmembers
(User Name: NCC • Password: Nearcut)
- **MIAMI VALLEY STUDY GROUP WEBSITE**
www.mvsg.org

Convention 2006

"The Ladies of Cambridge"

The 33rd Annual National Cambridge Collectors Convention will be starting in just a few short weeks. I hope we're going to have lots of people here for the first time. It's not too late to register! Check out the registration form on page 14.

If this is your first Convention, be sure to be at the National Cambridge Museum on Thursday afternoon at 3:00 for the Orientation Meeting. This is a chance for you to hear from experienced conventioners what's what and when to be where. It will also be an opportunity for you to meet our Mentors. These are folks who have made a commitment to be available to answer your questions throughout the weekend.

Some things you need to know before you leave for Cambridge however. There's a map of the area on page 17 of this month's Crystal Ball. This should help you get your bearings as you come into town. Most of the activities take place at the National Cambridge Museum or

the Pritchard Laughlin Civic Center. Both are very easy to find.

At the Banquet on Friday night, you'll see that many people have brought a beautiful Cambridge Stem to use for the dinner. If you don't want to be left out, be sure to bring a stem from home – or if you forget to pack one, one of our glass dealers will be more than happy to help you find the perfect stem to purchase on Friday afternoon.

Speaking of dealers, we have a terrific line-up this year. Most are returning dealers whom we all love to see at a glass show because we know what beautiful wares they will have in their booths, but we have a few new dealers this year as well. Can't wait to see what they'll bring for us.

You may have noticed an ad in last month's and this month's CB announcing the Mini Auction. Yes, the Mini Auction will return this year. The shoes of Willard Kolb are

impossible to fill, but we've found another who will step up to provide some entertainment as we raise money for our beloved museum. Alex Citron has agreed to pick up the gavel and sell us some glass on Friday night at the banquet. Please be sure to drop off your donation of first quality Cambridge Glass on Friday morning at the Registration Desk at Pritchard Laughlin Civic Center. Donations estimated to be worth \$25 or less will be donated to the museum gift shop for resale. I've heard rumors that there might be an etched Nude Stem in the mini auction this year. Don't miss it!

It's down to the wire now. I've started packing up supplies and designing the Convention Booklet. I can't wait to see the familiar faces and meet some new people as well. Come on and see the Ladies of Cambridge!!

--Shelley Cole, Convention Chair

Registration Form on Page 14
Register Today • Deadline Approaching!

The Crystal Ball

PO Box 416 Cambridge, Oh 43725
e-mail: NCCCrystalBall@aol.com

Staff

Executive Editor Alex Citron
Research Editor Les Hansen
Advertising Manager Jeannie Moore
Circulation Sharon & Joe Miller
.....

An electronic version of this newsletter is available via e-mail. Just contact us at NCCCrystalBall@aol.com to start your free subscription. You will continue to receive the paper version as well.

Dealer Directory is \$24 for 12-months, size limited by box (see page 19). Includes listing on NCC website.

Editorial Policy

Research materials submitted are subject to review by the Research Editor or other experts. All submissions are subject to editing for length, accuracy and conformity to norms of style, spelling, punctuation and grammar. No advertising will be accepted on behalf of candidates for NCC or other elected office, nor for or against any legislative matter before the NCC Board or membership.

Artwork must be submitted in electronic (jpeg, tiff or bmp) format, unless special arrangements have been made in advance with the editor. Photos must be minimum 300 dpi.

Advertising Rates

1/8 page \$15	1/4 page \$20
1/2 page \$30	Full page \$50
(plus \$5 per photograph)	

Classified Ads: 10 cents/word, with a \$2.00 minimum.

Electronic submissions should be e-mailed to NCCCrystalBall@aol.com. Use Word, PageMaker or Adobe PDF. Mailed submissions and all payments should go to PO Box 416 Cambridge OH 43725. Deadline is 10th of preceding month. Ads must be paid in advance. *Show listings are FREE; send info to PO Box or e-mail address 60 days before event.*

Convention 2006 • Schedule of Activities

"The Ladies of Cambridge"

WEDNESDAY, JUNE 21

6:30 p.m. *Pool Side Picnic at the... Day's Inn, 2328 Southgate Parkway*

THURSDAY, JUNE 22

8:45 a.m. *Field Trip to... Museums of Oglebay Institute, Wheeling WV*
Meet at the Cambridge Museum

2:00 p.m. *Registration Opens National Museum of Cambridge Glass*

3:00 p.m. *Orientation Meeting National Museum of Cambridge Glass*

7:00 p.m. *Program: Pritchard Laughlin Civic Center, Conference Rm*
"Cambridge Glass: Ladies and All" by Miami Valley Study Group

FRIDAY, JUNE 23

8:00 a.m. *Registration Opens Pritchard Laughlin, Galleria*
pick up numbers for glass show line-up

10:00 a.m. *Joint Study Group Meeting Pritchard Laughlin, Conference Room*

11:00 a.m. *NCC: Questions & Answers Pritchard Laughlin, Conference Room*

12:00 noon *Dash Through the Past National Museum of Cambridge Glass*

1:45 p.m. *Registration Closes*

2:00 p.m. *Opening of Show & Sale Pritchard Laughlin, Exhibit Hall*

6:00 p.m. *Closing of Show & Sale*

6:00 p.m. *President's Reception Pritchard Laughlin, Galleria*

6:30 p.m. *Banquet & Mini Auction Pritchard Laughlin, Galleria*

8:00 p.m. *Annual Meeting Pritchard Laughlin, Conference Room*

SATURDAY, JUNE 24

7:00 a.m. *Glass Dash, Early Bird Admission Beech Grove Family Development Center*

8:30 a.m. *Glass Dash, General Admission Beech Grove Family Development Center*

11:00 a.m. *Closing of Glass Dash*

11:00 a.m. *Opening of Show & Sale Pritchard Laughlin, Exhibit Hall*

11:30 a.m. *Art Show Awards Presentation Pritchard Laughlin, Galleria*

12:00 noon *Program: Pritchard Laughlin, Conference Room*

"Chantilly" by Diane Gary

1:00 p.m. *Program, Tell Me All about It.... Pritchard Laughlin, Conference Room*

Moderated by Mike Strebler

2:00 p.m. *Glass ID & Bring & Brag Pritchard Laughlin, Conference Room*

5:00 p.m. *Closing of Show & Sale*

6:30 p.m. *Cocktails Pritchard Laughlin, Galleria*

7:00 p.m. *Mexican Fiesta Pritchard Laughlin, Galleria*

8:00 p.m. *Program: Pritchard Laughlin, Conference Room*

"The End of the Factory" by David Adair

SUNDAY, JUNE 25

8:00 a.m. *Board of Directors Meeting Comfort Inn, Hospitality Suite*

1:00 p.m. *Former Cambridge Glass Company National Museum of Cambridge Glass*
Employee's Reunion

Breaking Glass

from page 1

With capital in hand I made arrangements to purchase the nudes. I weighed the possibility of driving to Philadelphia to pick up the nudes. It would have been about an eight-hour drive and I don't think I had a vehicle that could go eight hours. So I asked the seller to ship. We waited a long time for the shipment to arrive. I couldn't imagine what the seller was doing for shipping since it took so long to get off the ground. This was also before ebay so shipping was an infrequently practiced art. Well, when the shipment finally arrived it was not exactly a piece of art. We received a wooden box, probably $\frac{3}{4}$ " plywood, that had to weigh upwards of fifty pounds. A more apt description might be a crate.

We all gathered on a Saturday morning to open the crate. Uncle Johnny, Aunt Judy, Lisa, myself - we all waited to open the treasure chest. We pried off the lid to reveal nude stems. How thrilling. After the first couple were removed, the tragedy began to unfold. The seller had packed the stems on their sides in layers. Every time that crate got thumped the top layers would press down on the lower layers. The crate must have gotten thumped a lot because it weighed so much that no one handling it could possibly have treated it like it held fragile glassware. As the unpacking went on it just got uglier.

I couldn't believe what had happened to my big nude deal. I expected to be in high cotton but it didn't quite

turn out that way. Fourteen good nudes came out of the crate so I at least had a cotton crop. But, eleven had perished. For the record, champagnes seemed to have broken the best, probably because the disproportionate bowl size. Uncle Johnny was a great sport and easy to work with. He took four cocktails and left the rest to me.

One thing ebay has done is advanced packing and shipping techniques. We have learned the greatest danger to shipping glass is not from the outside of the box. Sure, the handlers still kick the box when they see it marked fragile. But we have learned to compartmentalize and buffer the contents so they don't bang on each other. With modern packing techniques all the nudes could have made it. However, my shipment was under the old school where the protection focused on the container. The wooden crate with no separation destroyed eleven Royal Blue nude stems in a single blow. And I think that may be a record.

One final note. Over the years I sold off most of the nudes I purchased from Philadelphia. And, my Uncle Johnny passed away. I had lost another great glass friend. Aunt Judy made sure I got the four RB 3011 cocktails Uncle Johnny had kept. These I treasure in my collection today.

Next month, Only buy as much as you can carry.

Convention First-Timers?

by Judy Rhoads

We are so glad you will be joining us for convention this year! It is always exciting to learn and talk about beautiful glass with those who share your collecting passion. You will find Cambridge glass collectors to be some of the friendliest people in the world.

When you arrive in Cambridge, we will be ready for you. There are many different activities to take advantage of: seminars, meetings, the glass show, the Glass Dash, a glass identification session, a "bring and brag" session, our wonderful new museum, enthusiastic fellow collectors, and, as always, good food. It is a wonderful feast of Cambridge glass!

Since this will be your first time, you may have questions, or just may be wondering how to navigate around all these activities. We can help! We encourage you to attend the First-Timers' Orientation on Thursday, June 22, at 3:00 p.m. at the Museum.

This will be a time to get acquainted, answer your questions, and introduce you to Mentors. Mentors are volunteer members of NCC who have attended previous NCC conventions. They are making themselves especially available to you to help you have a great convention experience. They can give you good information and hot tips about what sessions are "musts," or what to wear to certain events. They can commiserate with you about the "piece of glass that got away," let you know how early you need to get up to find the best treasures at the Glass Dash, celebrate with you about that great find, or tell you the best place in town to get a good meal. Mostly, they will be familiar faces that you can hunt down and talk to all during convention.

We want you to be comfortable at convention and to get the most you can out of it. We look forward to seeing you in June!

1949-53 Cambridge Catalog AVAILABLE AGAIN

Out of print for over a year, this vital research guide is once again available thru the NCC website and ebay stores
\$19.95 (\$17.95 for members)

A Fenton-Cambridge Connection

by David Adams

Last August, the glass world lost one of its treasures – Frank Fenton passed away just a few weeks after Fenton Art Glass Company celebrated its 100th year. Frank was one of the most knowledgeable people in the field of glassware, and he was extremely generous in sharing his knowledge with us all. Under Frank's direction, Fenton acquired the records of the old National Glass Combine, and many of the old Butler Brothers catalogs, along with countless other paper records from defunct glass companies. The library of documentation that he accumulated is now being scanned and preserved for future generations on CDs.

Those who met Frank discovered that he had a great sense of curiosity and he loved to explore the designs of items made of glass. He had an "idea room" at the Fenton factory, where there were hundreds of pieces of glass, *none of which were Fenton*. Frank bought items that he liked that were done by other companies, and saved them in the "idea room." Every once in a while, he would go into the room, pull a piece and take it to the mold shop. He would explain how he would like them to create a similar piece, but to change this or that in a way that would make it better (and not just a simple copy of another company's work).

When Imperial Glass Company went out of business, they called Frank and asked if he had any interest in some of their mold inventory. Frank purchased a number of molds from Imperial, and stored them away in the Fenton factory for future use. Most often, if he wanted to use a mold from another company, he would have it modified. You may have seen the Fenton-produced "Caprice" style vases, modified to have a ribbon around the neck of the vase. That was an original Cambridge mold, modified by Fenton to include the ribbon. And it can't be mistaken for an original Cambridge piece.

Fenton also uses molds without any major modifications. An example of this is the "Rams Head" single candlestick, another Cambridge mold acquired at the time Imperial closed down. In this case, there is a modification – each candlestick has the Fenton mark molded into the underside, but beyond that is the pledge from Fenton that they will never manufacture an item from another company's *mold in any color originally made by the original company*. You can find that "Rams Head" candlestick in a whole bunch of neat colors, but nothing like any originally produced by Cambridge.

Which brings us to the real reason that I wrote this article. The accompanying photograph shows a "Snail" shaped vase from an original Cambridge mold that was acquired by Fenton when Imperial closed. To my knowledge, this is the first piece Fenton has made from that mold (I could be wrong here). The vase is

done in Fenton's "Burmese" color, and hand painted and decorated. The significant thing is that it is signed on the underside:

***Frank Fenton Memorial
1915 – 2005***

It is also hand-numbered. There were only 1950 of these vases produced, and each is numbered.

It is a beautiful piece of glass, and a fitting tribute to a man who was a friend to everyone he met, was an enthusiastic collector of glass, was willing to share his experiences and his expertise with all glass collectors, and someone who appreciated the beautiful creations of glass artists employed by his competitors.

Linda and I will miss Frank Fenton, as will many collectors who knew him. The vase is a wonderful way to keep his memory alive. The fact that it came from a Cambridge design makes it even more special.



Historically Speaking

by Georgia G. Otten

March 20, 2006. Georgia Otten and Frank Wollenhaupt were guest speakers at the Vandalia-Butler Historical Society meeting in Vandalia, Ohio. The society group has been studying Ohio history. Originally, a program about Cambridge glass was to be presented by Al Tuttle who is a member of both NCC and the historical society. Al had to go to Fiji.....hate when that happens. It was a business trip for Al, but I imagine there was *some* pleasure to it as well.

Not wanting to leave the society without a program, Al contacted Georgia in hopes of a replacement.....to give the program, not to go to Fiji.....and Georgia said she would take care of it. She contacted Frank for help! And the 'duo' made plans.

Georgia and Frank wondered about topics to present at the meeting assuming they would be talking to "non-glass collectors." Of course NCC and the history of the company, and then perhaps discuss three of the most recognizable items (in their opinion) from the Cambridge production: swans, flower frogs, nude stems. And that became the plan.

Frank began the program with a background history of the Cambridge



Cambridge Swans and Flower Frogs on display at the March meeting of the Vandalia-Butler Historical Society.

Glass factory and then proceeded to talk about the actual process of making glass. On display to compliment the discussion, were various glassmaking tools, molds and chemical samples. He then discussed several examples of Cambridge early pressed glass. Frank continued his presentation with a detailed explanation of the etching process. Any questions? There were several hands in the air! They wanted more information about glassmaking! Frank took care of that and the program continued.

Georgia began the second part of the program with a discussion of Cambridge colors. Examples of both transparent and opaque glass were on display. Next came a discussion of the swans, the flower frogs and the nude stems. These added to the display of Cambridge colors. Georgia ended the program by mentioning the final production years and one of the last colors produced by Cambridge Glass Company; Milk. On display for example was a wonderful Milk swan punch cup! Any questions? Hands were again raised. The questions were answered and everyone was invited up front to look at the glass.

There was inspired discussion around the display table after the program. Almost like giving a second program! These folks wanted to know more about the specific pieces of Cambridge glass! It was a wonderful experience to be with this group and share the joy of collecting Cambridge Glass.



At left: Molds and glassmaking tools fascinated the audience.

Study Group Reports

The NCC has several study groups; these are the groups currently active and holding regular meetings. Listed below is contact information for these study groups.

If there is no study group in your area and you are interested in starting or joining a new study group, please contact NCC Study Group Advisor, Judy Rhoads at kjrhoads@aol.com.

#13 - Miami Valley Study Group
Miami Valley area, Ohio
Larry Everett
db0098@dragonbbs.com
(937) 675-6491

#14 - The Cambridge Cordials
Cambridge, Ohio
Lorraine Weinman
blweinman@hotmail.com
(330) 966-9376

#15 - North Texas Cambridge Study Group
Dallas area, Texas
Scott Pierce
scottperce1@msn.com
(817) 427-9510

#16 - Elegant Glass Collectors
PA & NJ
Bill Dufft
billnvon@aol.com

#17 - The Columbus Wildflowers
Columbus, Ohio
Barbara Wyrick
bwyr@ee.net
(614) 291-0361

#20 - South Florida Study Group
Miami, FL
Linda Gilbert
rosepointbabe@aol.com

Cambridge Cordials

On Saturday, April 16, 2006, the Cambridge Cordials Study Group met at the home of Shirley and Carl Beynon. Those in attendance were: Linda Adkins, Cindy and Mike Arent, Shirley and Carl Beynon, Rich Bennett, Kay and Frank Marchant, Cyndy McVicker, Sharon and Joe Miller, Judy Momirov, Jill Ross, Elaine and Jack Thompson, Marsha Thompson, Lorraine Weinman, Lynn Welker and Mary Welker. Shirley Difulco was a guest of the Cordials.

Getting the important issues taken care of, everyone spent some time sharing what had been happening since Convention time. "Cambridge Glass" were words heard more than once in the lively conversations. Next important item was sampling the many foods that were spread out for everyone's enjoyment in a delicious potluck dinner. With no duplications, the variety was astounding.

Following the dinner, Carl led the group in some exciting word games using Cambridge Glass as the theme. Everyone had fun unscrambling etching names. Amazing how sometimes very easy familiar words can confound a person when scrambled in just the right way and timed competition puts urgency into the mix. With stiff competition, Lynn Welker came out victorious, winning the prize for unscrambling the most answers.

At this point, Carl brought out his books containing Cambridge Glass Company

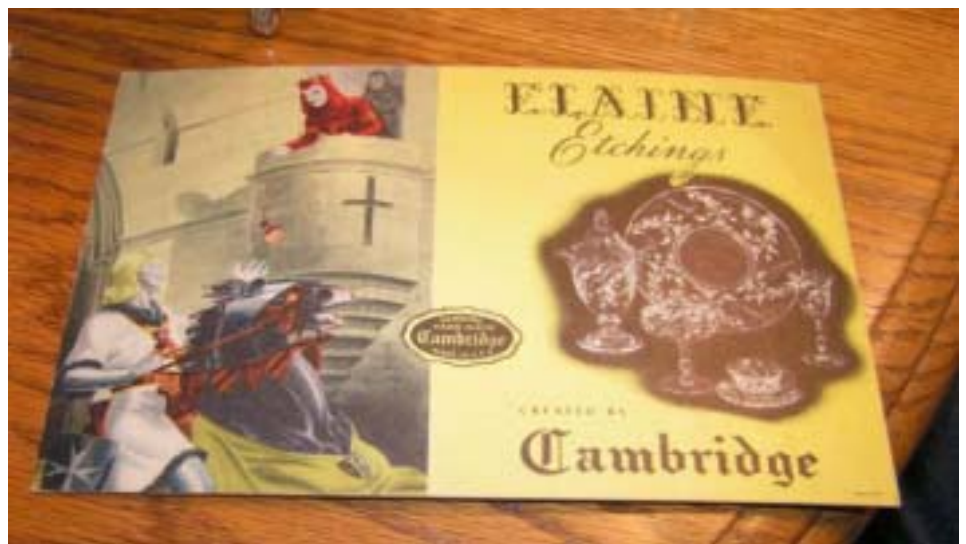
circular letters. Everyone found it interesting to look at the illustrations, catalog pages and correspondence. It was difficult to bring this activity to an end. The business portion of the meeting followed. Sharon shared the treasurer's report with the group. The 50/50 drawing at the auction brought in \$225 which will be used on continued projects for NCC and the Museum. Expenditures over the past year were discussed; plate racks and risers were purchased by the Cordials. We discussed purchasing more in the coming season as needed. Specific items in the financial report were discussed. Two letters recognizing the group's donations were entered into the club records.

The 2006 Convention was discussed. Plans for sponsoring the Former Workers' Reunion on Convention Sunday were made. The annual Convention 50/50

raffle was discussed. Jack Thompson suggested our having more than one winner. After discussion, it was decided that there would be three winners. Jack was then nominated to be raffle chairman.

Cindy Arent shared progress with the group concerning the Dickens Victorian Village project which is ongoing. At this point, the Museum and Cordials members will be involved in two tours in December. Participation in the Thanksgiving weekend holiday parade was discussed whereby members will be attired in Victorian clothing, making the presence of The National Museum of Cambridge Glass more known in the community. More discussion will need to follow on this.

This concluded the business portion of the meeting. Show and Tell then followed as led by Lynn Welker. Among the items included were: an Elaine 3500 line, 3-part



Elaine Advertising Sign, donated to the Museum in memory of Willard Kolb

relish with a brass filigree mounting; a Crown Tuscan 7966 sherry in gold Portia, acid signed; an Elaine paper advertising sign for the Museum in memory of Willard Kolb; a Forest Green 3400 globe vase, with applied Crystal snail handles; a Blue I keg set in silver plate frames; a Bluebell 585 perfume with beehive stopper; a Wildflower mustard pot; and a Wildflower marmalade with original spoon.

The regularly scheduled May meeting will be at the home of Lorraine and Mark.

— respectfully submitted by Lorraine Weinman

North Texas

On January 29th, The North Texas Cambridge collectors journeyed to Flower Mound Texas for the first meeting of the New Year. People arrived early enough to wander through Freeman and Jeannie's house.

Our meeting started with a short bit of business. First, apologies to Gwenell and Scott Pierce for mis-identifying their cream and sugar display last fall. Then, we brainstormed some ideas for a bookmarker to use for club publicity. A draft will be ready for the next meeting. We looked at the calendar for the first half of 2006 to plan our schedule and reminded everyone about our co-hosting duties for the 2006 NDGA show in Waxahachie this July.

Our program topic was "Be There and Be Square". Not the "square" line, but other variations on square. We had examples of square shapes, cuttings, and etchings. This was a fun topic, and will be written up as an article for the Crystal Ball.

We concluded with "Show and Tell." The finds included: #3400/38 80 oz. ball jug with silver and frosted poppies, caprice #103 moonlight blue 12" celery, caprice #80 13" moonlight blue salad bowl with silver fruit decoration, #1737 ebony ashtray set, and #402 12" amber vase. Other items included a Duncan miller cream and sugar set, Fostoria "stars and bars" candlestick marked "Sample", and Heisey 10" plate with clipper decoration.

A meeting will be held in San Antonio if we have enough members for an informal evening meeting after the Kent Washburn show February 11. We'll also be arranging a lunch meeting in Grapevine, March 11 since most members will be attending the Metroplex show. The following meeting will be April 30, 2006 on the topic of

tumblers. The May meeting will be held jointly with the Fostoria Glass Society of North Texas to prepare for the July NDGA show.

Submitted by Freeman Moore

Miami Valley

Our President, Georgia Otten, called the meeting of April 11 to order at 7:00 p.m. at the Huber Heights, Ohio, branch library. There were fourteen of us there.

Frank Wollenhaupt brought us a pre-production bookmark. Everyone agreed the blue color looked the best. We will print "National Cambridge Collectors - Miami Valley Study Group" on the front at the base and curve the wording slightly to follow the curve of the base.

Georgia mentioned we still might want to set up some sort of display in the library showcase. The display would highlight Cambridge glass, but would be mostly of paper and other non-breakable items rather than glass. It could have one or two "low" pieces of glass that would not fall over if the case were bumped. Be thinking about it for later in the year.

Ken Rhoads will present the program next month on Rubina and Sunset. If you have glass you would like to share for the program, please send Ken your list.

Larry Everett will again be in charge of the NCC "Glass Dash." Larry would appreciate all the good volunteer help he can get for set-up and ticket sales.

Frank Wollenhaupt noted the passing of Willard Kolb. The Miami Valley Study Group extends their sympathy to the Kolb Family. Almost all of us knew Willard and we shall miss him.

Our DVD project is progressing nicely. David Rankin has divided the photo portion of our presentation into 5 sections and transferred them to DVD's. David proposed early 1931, spring, summer, fall and late 1931 and all of 1932 as the "working"

divisions from which to write the narration. David asked for volunteers to write the script. Frank immediately volunteered to do section 3, which includes the nudes. Georgia Otten, Ken and Judy Rhodes, Will and Bev Acord, Larry and Susan Everett all volunteered to write sections of the script.

David proposed that this year since Georgia, as President, will do the introduction and since her schedule is somewhat flexible right now, she could narrate the entire program. The writers can e-mail their scripts to Georgia.

Georgia proposed the title for this second DVD as "*Cambridge Glass: Ladies and All*" to dovetail with the convention theme of "*The Ladies of Cambridge*."

After some discussion we settled on a price of \$18.00 including shipping and tax for the new DVD and \$13 for the first DVD, "*Cambridge Glass and All That Jazz*." We will offer both for \$29 including shipping and tax. Ken Rhoads moved, Frank Wollenhaupt seconded, to continue our practice of earmarking **all** profits from the sale of the DVD to the endowment fund. Motion carried. Our meeting adjourned at 7:40 p.m.

Show and Tell: A #159 (Martha) crystal 9 inch Corn Dish, the #18 Mt. Vernon 7 ounce toilet bottle, a #2892 Guernsey ice tea tumbler with Maiden's Blush decoration, a Pressed Rose Point goblet and a sherbet with Rose Point etching as well, a #1040 3 inch Swan in Crown Tuscan with an "early" Charleton type decoration and a #1041 4" swan in satin crystal with enameled head and feet, a #2746 Cigar or Tobacco Jar in peach-blo, a #1066 ivy ball in emerald, a #1066 ivy ball with Chantilly etching, and #12 Mt. Vernon ivy ball in carmen and a #3400 ivy ball vase in Carmen Japonica.

continued on page 12

NUDES

- A pair of Carmen #3011 tall cigarette boxes and covers sold for \$646 on 4/17. Tiny chip to one lid.
- A sumptuous pair of Carmen #3011 ashtrays and #3011 Carmen tall covered cigarette box sold on 4/23 for \$1,000.
- A tall #3011 cupped comport with a Light Emerald top sold for \$282 on 5/4.
- May 9th saw the sale of a most gorgeous #3011 nude stemmed cocktail with a Crown Tuscan stem and foot and a Royal Blue bowl for \$511.

CAPRICE

- Finally, a 68-piece set of Crystal Caprice that had been listed weekly for at least a year, sold on 4/18 for \$900.
- On 5/6, a true buy was made. This sale witnessed a crystal Caprice go-with 5-light #1568 candelabrum. This is a very elusive piece. It consisted of the elusive #1457 base and equally elusive #1432 arm. There were 5 common #19 bobeches and prisms. This piece was a double-good buy in that there were some other parts offered as well. Namely, 3 of the #1536 arms parts peg nappies. All with what appears to be the #1053 Harvest rock crystal cutting. WOW! And all for \$115. Lucky buyer, to be sure!

FLOWER FROGS

- A gorgeous tall 13" draped lady flower frog in Light Emerald sold on 4/30 for \$250.
- An 8" Light Emerald two-kids flower frog sold on 4/23 for \$192.

SWANS

- A beautiful bevy of six small stunning swans in Carmen , #1040 and 3", sold for \$381.
- On 4/20, a simply stunning #1044 large 10" swan in amber sold for \$408.

- Unless you were looking in the Fenton category on 5/9, you missed the sale of a beautiful Crown Tuscan 8½" swan with the rare Charleton "Blue Mist" enameled decoration. Stunning. It sold for a reasonable \$1,005.

ROSEPOINT

- An extremely gorgeous and rare P.572 vase with RosePoint etching sold on 4/30 for \$261.
- And unbelievably, on 4/30 also, from a different seller, another P.572 vase with RosePoint etching sold for \$255.
- A very elusive #1066 ivy ball etched RosePoint sold on 5/4 for \$370. On 5/8, another sold for \$415.
- A most gorgeous #1064 two-piece hurricane shade and candleholder base etched RosePoint sold for \$351 on 5/9.

OTHER ETCHES

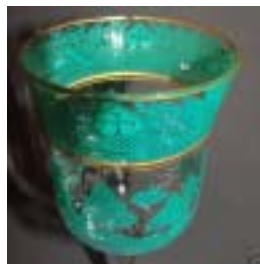
- On 4/24, a marvelous #1242 vase in crystal with, of all etchings, Blossomtime, sold for \$198. Gorgeous.
- A magnificent pink #1020 cocktail shaker bottom, listed incorrectly as a #1023 vase, with D185 Dancing Girl etching, the large girls, sold on 4/24 for \$636.
- April 26th saw the sale of a P.293 oil and stopper with rarely seen Magnolia etching, for \$33. Can you say 'bargain'.
- A visually arresting #3065 crystal water goblet with Willow etching filled in with Nanking Green enamel and gold trimmed, sold for \$37 on 4/22. There was a chip to the rim.
- A very scarce #1314 ashtray with a Heatherbloom top and crystal stem and foot and etched Diane on the top, sold on 4/30 for \$334.



- A regal and stately #1228 oval 'pillow' vase with gold-encrusted Chintz #2 etching, sold on 4/16 for \$665. There was stated slight gold wear to the rim.
- April 30th saw the sale of a stunning and glistening pair of #1338 Moonlight Blue Caprice 3-light candleholders with Apple Blossom etching on the underside bases. Small nick on one candleholder. They sold for \$800 for the pair and they are probably the only pair known.



- On 4/28 a most beautiful and seldom seen #96 half-pound candy and cover in Light Emerald and a pink rose finial with #704 etching on the body, sold for \$157. There was damage to the rose finial.





The NCC was represented at the Ohio Historical Society Region 10 meeting on April 22 by Sharon Miller and Cindy Arent. The National Museum of Cambridge Glass will host the 2007 meeting. Preliminary plans for next year were discussed with Jim Strider of the Ohio Historical Society. Photo l-r Sharon Miller, Cindy Arent and Jim Strider

Dash Through the Past at Convention!

By Cindy Arent

Did you ever wonder about the steps involved in making your glassware and how the beautiful etchings were applied? Maybe you always wanted to learn about how The Cambridge Glass Company factory was designed or how the skilled artisans arrived in Cambridge Ohio in 1902.

Whether you have or haven't, we promise you will have a good time as you "Dash through the Past" with the museum staff and volunteers on Friday of convention at noon. The learning stations will be in place and NCC members will have the opportunity to move through the centers just as the students do when they visit the museum.

Some of the activities you will participate in will be: Buildings in Time (Cambridge factory), Glassworker Migration, Etching, and you will make your own museum badge that was designed by student volunteers Steve and Brook Bennett. Mark Nye will also be sharing information about The Cambridge Glass Company employee data base that he has been developing.

When we gather again in the museum auditorium for the conclusion of the "dash", you will preview a very short film clip of Cambridge workers leaving the factory after a hard day of work in the 1940s and you will learn what glassworkers did during their lunch hour. Please come and join the fun!

Study Groups Sharing Time at Convention

Do you belong to a Study Group? Do you wish there were one near you? This meeting is planned for all of you: The Joint Study Group Meeting at convention on Friday, June 23, at 10:00 a.m., in the Pritchard Laughlin Conference Room. We'll have a great time sharing ideas for ongoing groups, as well as sharing tips for groups trying to get started. How do you get a group going? What happens at a Study Group meeting? What happens when a Study Group has become inactive? Got any ideas for programs? What about having fundraising projects for NCC? Come with questions and ideas to share! Make sure your study group is represented. Hope we have a great turnout!

More from ebay

MISCELLANEOUS

- On 4/23 we all witnessed the sale of a breathtakingly beautiful #1318 tall covered urn in Carmen with a crystal keyhole stem and base for \$730.
- On 4/25, a simply stunning and very rare #235 vanity set from the #2800 Community



line in Carrera, opaque white, sold for \$688. It consisted of a dresser tray, pin tray, puff box, and pomade box.



- A wonderful #47 cornucopia vase in Crown Tuscan with Rockwell Silver Seahorse decoration sold on 4/29 for \$227. There was considerable wear to the silver on the seahorse.
- A crystal and footed, oval Cambridge dealer glass sign with frosted surface around the word CAMBRIDGE sold for \$100 on 5/3.

Miami Valley

from page 9

Judy Rhoads put on a very informative program on Cambridge Ivy Balls. Ivy Balls were first introduced in May 1931 as pictured in the "1930 - 34 Catalog" and produced all the way until closing. We enjoyed a wonderful display of 22 ivy balls where no two were alike. Judy noted two of the more difficult Cambridge ivy balls to find are in the Mt. Vernon line in Carmen and Amber.

Our next meeting will be May 9, 2006 at 7:00 p.m. at the Huber Heights, Ohio, Branch Library. Ken Rhoads' presentation will be on Rubina and Sunset.

Submitted by Will Acord, Secretary.

Wildflowers

On Thursday, May 4, 2006, the Wildflowers met at the home of Ken and Jackie Nicol at 7:00 pm. Refreshments of Shrimp Cocktail, mixed fruit plate, cheese tray and delicious homemade iced cake were served.

Since we did not have much business, we talked a little about the future of collecting in the computer age, and how several of the large, well known glass shows around the country have been cancelled this year.

We then got into our program of "Glass ID." One of the things I personally love about our group is the wealth of information we share with each other, not only about Cambridge glass, but many of the other early 1900's glass companies.

Some of the things we looked at were an Imperial Blue Carnival Poppy bowl, and we talked about the blue base color on Imperial Carnival being much more desirable and valuable than the other carnival base colors.

One of our members brought an extremely old art glass vase with clusters of large glass berries on the side. We learned that this was Webb glass made in the 1870's, and was a true highlight in the art glass world. But being made so early, it will not glow under a black light, which means there is no Uranium Oxide in the glass formula, and that is one of the ways to tell the timeline of glass.

This led into a discussion of looking at glass under black light, and Ken brought out a black light to test some pieces. We looked at a round crimped vase made in 1905 that had no glow. Uranium Oxide in the mix is what fluoresces and gives more color stability to the glass, which was why it was used. A Cambridge Ivory bowl had a definite glow under the black light, and many of the Cambridge Opaques have the Uranium Oxide ingredient. We tested a large Draped Lady in Willow Blue, and were surprised to see it glowed! We determined they put it in for color stability on the large piece. We thought Crystal would have no glow, but a Crystal Mandolin Lady had just a hint of a glow, so perhaps they used a little stabilizing there also.

Imperial Crystal Animals had no glow, where Heisey animals do, so that is one way to help determine who made the animals.

Following the timeline, during WWII, Uranium Oxide was no longer available for glass making, so the glass companies used Manganese to stabilize the glass, and glass made from the 1940's used the different Manganese ingredient.

Looking at some other glass, Italian glass from the turn-of-the-century will not glow, because the Italian glassmakers used Pot Ash.

We then tried to identify some pieces members had brought in for ID. Included was a large Dorothy Thorpe Punch Bowl with hand-painted 3-D pink roses, but we were unable to determine for sure who made the glass (it might have been US Glass). We had a Paden City divided Candy in a Farber Weeping Nude holder, and

we verified that the Zennia etch we looked at last month was a Tiffin etch.

Our meeting concluded with a great Show and Tell which included two gorgeous Perfumes, one in Azurite with Black Enamel, Gold trim and DeVillbiss fittings; and the 2nd in Crystal with handpainted Blue Roses similar to Charleton decoration. We also had a Crystal #1297 footed Vase (usually seen in Crown Tuscan) with "Sterling" decoration and a lovely cutting; a Crown Tuscan footed Shell with a Satin finish; a Pink LaRosa Caprice Juice Pitcher; an extremely unusual Tombstone Bookend with a Gold Encrusted Knight on Horseback etching; a Blue Cloud footed stem (Windsor Blue sprinkled into Crystal?? reminiscent of Mardi Gras); and a Willow Blue Pitcher.

Our meeting adjourned at 10:30 pm. The Wildflowers do not meet during the summer, but we will try to see each other at the NCC Convention. We are always looking for new members in the Columbus, Ohio area and anyone interested in joining in September can contact either Linda Roberts at lrobert2@columbus.rr.com or Barbara Wyrick at bwyr@ee.net

—respectfully submitted by Barbara Wyrick, Secretary

MUSEUM PARTNERS CELEBRATE HOPALONG CASSIDY DAY



YEE-HAW!!!

Q&A:

Hi:

We have a pair of these candleholders with Rose Point etch but we are unable to find the blank number. The blank looks to be #627 but with a round ball instead of the "thumbprints". We are wondering if someone in the Club knows what Cambridge called this blank.



We have the full library of Cambridge Glass books from the Club. We also have all of the issues of the Crystal Ball but do not remember seeing it in any of them. And, the Felt/Stoer candlestick books do not show this blank under "Cambridge".

Thanks,
Mark & Vivian Dorsett
Bartlesville, OK

Dear Crystal Ball:

Here is a photo of the toothpick holder, which nobody has been able to tell me a thing about. It is 2 1/8" high and 1 1/2" across. The item looks near-mint to me. Can you please find out something about it?

Thank you,
John Norris
Vidor, TX

John:

According to Lynn Welker, this piece was manufactured in the 1960's by Harold Bennett, from a new mold made for him at that time. It was cold flashed by a firm in Cleveland, and sold at places like county fairs, where it could be personalized with any inscription. It was also made in a "Crown Tuscan" color.



A Farber Inquiry

Recently, we got a letter from member Fleur de Lys Healy in Florida, asking about the glass used in Farber pieces. She knew that Farber had used glass from companies besides Cambridge, but wondered exactly what glass and how much of it. We passed her question on to Farber collector and expert Bill Dufft. He sent this very informative reply:

The Cambridge Glass Company produced roughly 70% of the glass inserts seen in Farber Bros. pieces and sets. The Cambridge insert group was composed of stock and some modified 3400 line, 3500 line, Caprice, Tally-ho, Nautilus, and Pristine line inserts, stock bowl tops used in their 3126 stem line, modified 1300 line decanters, and 1900 cordials, as well as custom-blown and molded inserts. The remaining 30%

of the glass inserts found in Farber Bros. pieces were produced by a variety of other prominent elegant glass manufacturers of the time, including Duncan Miller, Heisey, Fenton, Fostoria, Morgantown, New Martinsville/Viking, Westmoreland, and Corning. A cursory review of a



A Farber Comport with a Westmoreland "Lotus" insert.

copy of Julie Sferrazza's 1988 book entitled "Farber Brothers Krome Kraft, A Guide for Collectors" will give the reader a good idea of the variety of other company inserts used in Farber Bros. pieces and sets. The book is out-of-print, but may still be purchased on eBay.

The brief overview of the non-Cambridge inserts: from what I've been able to surmise, Duncan Miller produced both crystal and cobalt inserts for a variety of Farber Bros. relishes, butter dishes, and handled serving pieces. These molded inserts are occasionally found with the original round Duncan sticker on them, and can be identified by the starburst pattern in the center underside of the insert (Cambridge did supply one insert (pictured on page

continued on page 20

Convention Registration

"The Ladies of Cambridge"

National Cambridge Collectors, Inc. 33rd Annual Convention

June 21 – June 25, 2006

Cambridge, Ohio

Advance Registration Form

Please complete the form on the back of this page and return it immediately

(Registrations postmarked after June 1 incur a late charge. See below for cancellation policy.)

Send your check payable to National Cambridge Collectors, Inc. along with this completed registration form to:

National Cambridge Collectors, Inc.

Convention Registration

P.O. Box 416

Cambridge, OH 43725-0416

Do not enclose this registration with your election ballot. Ballots are opened during convention so your registration will not be processed before convention starts. That means we don't know you're coming until you get there.

Each person registering for the convention must pay the registration fee of \$20.00 regardless of which events will be attended. The registration fee includes admission to the NCC Glass Show and Sale and all other scheduled events as well as a Convention Booklet and Souvenir. You must be registered to attend the picnic. Please register for all events you plan to attend, including those offered at no charge. For children under ten years old there is no registration fee. However, they will not receive the Convention Booklet or Souvenir.

Show dealers: *If you are a member of NCC, Inc. and wish to participate in other convention activities, registration is \$15 (regular registration fee less show admission charge). The benefits are the same. Late fees apply.*

Please list each person registering separately. Names should be given as you wish them to appear on your name badge. Please provide your NCC, Inc. membership number. If registering for more than 4, please list additional members on a separate sheet.

If you would like to receive an email confirmation of receipt of this registration form, please give us your email address. **This is the only way we can provide confirmation of your registration.**

Cancellation Policy

Written Cancellation up to 30 days before first convention event – full refund.

Written Cancellation up to 15 days before first convention event - full refund less \$10 handling fee.

Written Cancellation up to five days before first convention event – refund meals only.

Written Cancellation less than 5 days before first convention event – no refund.

"The Ladies of Cambridge"

National Cambridge Collectors, Inc.

Registration Form Late Registration

Name(s) of Conventioneer(s) <i>(please print legibly, as you wish your name to appear on your badge)</i>	Membership #	1 st Convention? <i>(please circle one)</i>		Friday Banquet <i>(please circle one, only if attending Friday banquet)</i>	
_____	_____	Yes	No	Salmon	Chicken
_____	_____	Yes	No	Salmon	Chicken
_____	_____	Yes	No	Salmon	Chicken
_____	_____	Yes	No	Salmon	Chicken

Email address _____ Phone Number (____) _____
(for registration confirmation)

ACTIVITY	FEE	NUMBER ATTENDING	Total
Late Registration <i>(postmarked after June 1)</i>	\$30.00	_____	\$ _____
Dealer Registration <i>(\$25 if registering after June 1)</i>	\$15.00	_____	\$ _____
Friday Evening Banquet	\$25.00	_____	\$ _____
Saturday Mexican Fiesta	\$18.00	_____	\$ _____
Optional Donation to NCC for _____ <i>(i.e. museum acquisitions, endowment, etc.)</i>			\$ _____
		Total	\$ _____

If you have special dietary needs, please let us know and we will do our best to accommodate you.

ø ø ø ø ø ø ø ø ø

For Information and Planning Purposes Only
Please indicate how many will attend the following events:

Picnic, Wednesday Evening _____

Car Pool to Oglebay Museum, 8:45 a.m. Thursday
(\$9.00 or \$12.00 at the Oglebay Museums) _____

Major Field(s) of Cambridge Collecting _____
(This information will appear in the Convention Packet)

The Calendar

NCC Events

August Quarterly Meeting
Saturday, Aug. 19

If you know about any upcoming glass shows or other glass events, please pass the word on to us at least six to eight weeks before the show dates. These listings are free of charge.



Logo Patch



This attractive, embroidered Cambridge Logo Patch is now available from the Elegant Study Group. It measures 2" by 3.5" and can be ironed or sewn onto almost any fabric. Proceeds benefit the NCC.

Only \$5, postpaid

To order, call or e-mail
Ken Filippini
(201) 670-0990
lobstrboy1@aol.com

Upcoming Glass Shows & Other Glass Events

June 9-11:
Fostoria Glass Society of America
Show and Sale
Moundsville, WV
Call: (304) 845-9188
E-mail: cj_glass@comcast.net

June 10-11:
Old Morgantown Glass Show & Sale
Morgantown, WV
Call: (412) 217-2083
E-mail: leasure@earthlink.net

June 9-11:
Illinois-Missouri Glass Club Show
Belleville, IL (@ Fairgrounds)

July 8-9:
National Depression Glass
Association (NDGA) Show
Waxahachie, TX
www.NDGA.net

July 15-16:
Nashville Elegant & DG Show
Nashville, TN
Call: (615) 223-0816
E-mail: fullerre@comcast.net

July 22-23:
Peach State DG Show & Sale
Marietta, GA
Call: (770) 579-9225
www.psdgc.com

July 27-29:
Phoenix & Consolidated Convention
Pittsburgh, PA
Call: (928) 445-5137
E-mail: jdwilson1@earthlink.net

August 5-6:
Chicagoland DG Show & Sale
Wheaton, IL
Call: (618) 259-5059

August 12-13:
White Plains Glass Show

CANCELLED

August 19-20:
Houston Festival of Glass
Rosenberg, TX
Call: (281) 342-4876
www.houstonglassclub.org

September 15-17:
Sanlando D.E. Glass Show
Sanford, FL
Call: (407) 298-3355
E-mail: milliesglass@webtv.net

September 16-17:
Rochester Glass Show
Rochester, NY
Call: (585)-544-3315
www.dgcrochester.org

• TIFFIN • DUNCAN & MILLER • FENTON • HEISEY • IMPERIAL •



**31st Annual
Duncan & Miller Convention
Glass Show & Sale
JULY 29 & 30, 2006**

10:00 am to 4:00 pm

Alpine Club • 735 Jefferson Avenue • Washington, PA
(I-70, Exit 17)

• Admission \$4.00 •

Convention Dinner

Friday, July 28 at 6:00 pm
Holiday Inn, Meadowlands
(reservation required)

Special Guest: Tom Felt
co-author of the three-volume
Glass Candlestick Book

Auction

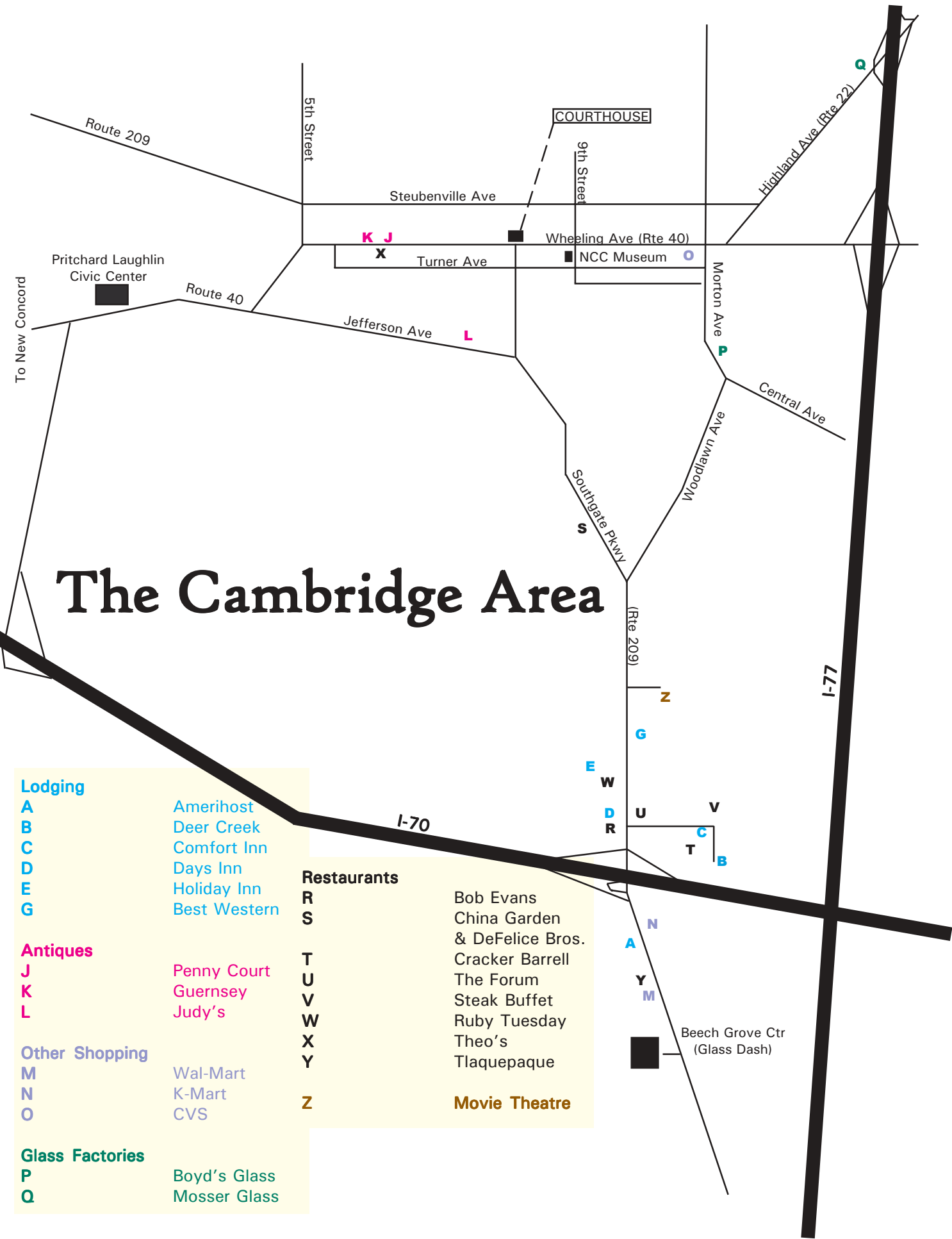
Saturday, July 29 at 5:30 pm
Thistlecrest Auction House
(rte 40, east of Washington)

For info, call: 724-225-9950
E-mail: museum@linequest.net

• NEW MARTINSVILLE • PADEN CITY • FRY

MORGANTOWN • CAMBRIDGE • FOSTORIA

The Cambridge Area



Lodging

- A Amerihost
- B Deer Creek
- C Comfort Inn
- D Days Inn
- E Holiday Inn
- G Best Western

Antiques

- J Penny Court
- K Guernsey
- L Judy's

Other Shopping

- M Wal-Mart
- N K-Mart
- O CVS

Glass Factories

- P Boyd's Glass
- Q Mosser Glass

Restaurants

- R Bob Evans
- S China Garden
- T & DeFelice Bros.
- U Cracker Barrell
- V The Forum
- W Steak Buffet
- X Ruby Tuesday
- Y Theo's
- Z Tlaquepaque

Movie Theatre

■ Beech Grove Ctr (Glass Dash)



Stems Without Thorns

As the world's largest supplier of old & new china, crystal, silver and collectibles, Replacements, Ltd. has more than 700 different patterns of Cambridge crystal.

And however much we enjoy selling pieces that were once thought irreplaceable, we love buying them as well. Thanks to people like you, our crystal inventory currently numbers in the hundreds of thousands, and the numbers keep growing every year.

So, if you've been unsuccessfully searching for that elusive piece of Cambridge - or any other type of fine crystal - call us for a free list of pieces available in your pattern. And, if you're looking to sell pieces you currently have, we can help you there, too.

REPLACEMENTS, LTD.

China, Crystal & Silver • Old & New

1-800-REPLACE
(1-800-737-5223)

1089 Knox Road
PO Box 26029, Dept. CB
Greensboro, NC 27420
www.replacements.com



CLASSIFIED ADS

WANTED... Cambridge Forest Green Tally Ho 6 Oz. Punch Mug (1); footed Punch Cups (4). Contact Kathy Kahrig 740-432-7474
DOGGYDOLLY@aol.com

FOR SALE... Cambridge Rosepoint dessert plates, cups and saucers. Call (320) 679-3164

BUY, SELL, FILL OUT A SET...
your ad can run here for as little as \$2. Reach over 1,000 avid collectors of Cambridge Glass. See page 3 for details.

or e-mail NCCCrystalBall@aol.com

DEALER DIRECTORY

THE DEGENHART PAPERWEIGHT AND GLASS MUSEUM, INC.

P.O. Box 186
Cambridge, OH 43725-0186
Intersection of US 22 & I-77
Phone 740-432-2626

Cherished Collectibles

Shopping 24 hours in our online store
Glassware, Figurines, Collectors' Plates
www.tias.com/stores/chercoll/
cher@cherished-collectibles.com
Elegant and Depression Era Glass

Dee and Tony Mondloch
Phone: 850-747-8290 glass01@knology.net
1609 Clay Ave. Panama City, FL 32405

Precious & Few

Tiffin and Duncan & Miller Glassware,
Other Elegant Glass, Antiques, Collectibles
Shop: www.apreciousfew.com

Glass Menagerie Antiques
Your Website for quality Glass from
the 20's, 30's, 40's & 50's.
www.glasstreasurechest.com

GREEN ACRES FARM

2678 Hazelton Etna Rd.
Pataskala, OH 43062
(State Route 310 North)
Sat & Sun 1-7 pm 740-927-1882
Antiques, Crystal Glass & Collectibles

THE GLASS URN

456 West Main Street, suite G
Mesa, AZ 85201 480-833-2702
480-838-5936

Mail Order Shows Open Shop

CAMBRIDGE, FOSTORIA, HEISEY, etc.

Fostoria Glass Society of America
Traveling Ambassadors
Ralph & Joyce Rider

For info: 817-545-5856
E-mail: r.rider@sbcglobal.net

John **Burlingame** Betty
Visit our booth (B-6) in
DELILAH'S

301 1st Street Sanford, FL 32771
Antiques, glass, pottery, collectibles, etc.
cell 386-212-7121 tel 407-330-2272

Max Miller

Elegant Glassware • Books • Fiesta
...and more
THE MARKET PLACE
(713) 467-0450 • BUS 10910 OLD KATY RD.
(713) 461-1708 • RES HOUSTON TX 77043
MMXGLASS@aol.com

VIRTUALATTIC AT THE GLASS CHALET
SPECIALIZING IN ELEGANT DEPRESSION ERA GLASS
PO Box 3448

Sandra L. Bridwell-Walker
William P. Walker
Phone: 817-517-2325
Sandy's Cell: 817-559-0328
Bill's Cell: 817-357-7084

Cleburne TX 76033-3448
www.virtualattic.com
virtualattic@sbcglobal.net
theglasschalet@sbcglobal.net



SCOTT'S ANTIQUES

Elegant Glassware of the Depression Era
Mainly Cambridge and Florence Ceramics
Retirement. Selling all inventory
at reduced prices

John & Peggy Scott
Scotland Ridge Farm
PO Box 1001
Aurora, MO 65605

(417) 678-0624
scottjpp@aol.com

Remember...

When writing to these dealers,
please include a self-
addressed, stamped envelope.

DEALER DIRECTORY

When writing to these dealers, please enclose SASE

Antiques and Collectibles • Mostly Glass
DAUGHERTY'S ANTIQUES
 Jerry and Shirley
 (402) 423-7426 evenings Lincoln NE 68512
 www.daughertys-antiques.com
 e-mail: sdaugh2515@daughertys-antiques.com
 Shows & Mail Orders 2515 Cheshire North

Milbra's Crystal Buy & Sell
 Replacement and Matching
 Milbra Long (817) 645-6066
 Emily Seate (817) 294-9837
 PO Box 784
 Cleburne TX 76033
 E-mail: longseat@sbcglobal.net
 www.fostoriacrystal.com

*Specializing in
 Cambridge,
 Fostoria, Heisey
 and others*

BARNESVILLE ANTIQUE MALL
 open 7 days, 8 - 5
Nancy and Brian Mayhugh
 Owners
 202 N. Chestnut St. 740-425-2435
 Barnesville, Ohio 43713 3 floors
 EXIT 202 OFF I-70 • always buying & selling antiques

ALADDIN LAMP BOOKS
 Free History of Aladdin Lamps
 Figurine Lamps Wanted
 Bill & Treva Courter
 brtknight@aol.com
 3935 Kelley Rd. Phone 270-488-2116
 Kevil, KY 42053 FAX 270-488-2116

THE GLASS CUPBOARD
 155 Blake Blvd. (Apt 215B)
 Pinehurst, North Carolina 28374
Bob & Marcia Ellis Cambridge Show
 910-295-2821 and Mail Order

B&H ANTIQUE MARKETPLACE
 3739 Highway 29 North
 Danville, VA 24540
 (434) 836-4636
 Cambridge • Heisey • Duncan • Fostoria
 Open Thur - Sat 11:00 to 5:00 (seasonal hours apply)

Monday thru Saturday 10 - 5:30 Sunday 12 - 5:50
Bogart's Antiques
 BUY - SELL - APPRAISE - REFINISH
 CANE & REED CHAIRS - CLOCK REPAIR
 Jack & Sharon Bogart State Route 40
 740-872-3514 shop 7527 East Pike
 740-826-7439 home Norwich, OH 43767

BAKER FAMILY MUSEUM
 805 CUMBERLAND ST.
 CALDWELL, OHIO 43724
 740- 732-6410
 bakermuseumnellbaker@msn.com
 Wed & Thurs 9-4; Fri - Sat 9-5

CRYSTALLINE COLORS
 Buy, Sell and Appreciate
 Cambridge and other Elegant Glass
 Riverfront Mall in New Philadelphia, OH
 #'s 626 and 642
 Lynne R. Franks 216-661-7382

CRYSTAL LADY
 Thurs. - Sat. 11-5
 1817 Vinton St. Omaha, NE 68108
Bill, Joann and Marcie Hagerty
 Shop 402-341-0643 Home 402-391-6730
 Specializing in Elegant Glass & Collectibles
 www.crystalladyantiques.com

Storck's Antiques
Rick & Joyce
 Antiques & Collectibles • Glass & Pottery
 Specializing in Fenton, Imperial & Cambridge
 Shows & Mail Orders • Storck1@aol.com
 Greenfield, MN 55373 • (763) 477-6415

 **Mother Drucker's**
Penny Drucker
 Specializing in Elegant Glassware
 Shows & Mail Order
 PO Box 50261 (949) 551-5529
 Irvine, CA 29619 (888) MDRUCKER
 www.motherdruckers.com

Deborah Maggard, Antiques
 Specializing in Cambridge Glass,
 American Hand-Made Glass & Victorian Art Glass
 We buy one piece or entire collections.
 Please contact me at 440-247-5632
 or e-mail at debmaggard@adelphia.net
 P.O. Box 211 • Chagrin Falls, OH 44022

GLASS FROM THE PAST
 Maureen Gillis 
 www.glassfromthepast.com
 email: maureen@glassfromthepast.com

JUDY'S ANTIQUES
 Judy Bennett
 422 S. Ninth Street (corner of Jefferson)
 Cambridge, Ohio 43725
 Business (740) 432-5855
 Residence (740) 432-3045
CAMBRIDGE GLASS MY SPECIALTY

BRIDGES THRU TIME
 Antiques & Elegant Glassware & Collectibles
 Member of Greater Houston BBB
 Located at Olde Carriage Shoppe
 810 2nd Street • Rosenberg, TX 77471
For Web-Storefront and Auctions
 Website: http://www.bridgesthrutime.com
 E-mail: imwolf@sbcglobal.net

THE JONES GROUP
Cindy Jones
 Buy and Sell High End Cambridge Glass
 509 Whitney Bay
 Windsor, CO
970-686-6896 or E-mail Caprice0@aol.com

Mary Jane's Antiques
Early American Pattern Glass
Depression Era Items
 2653 Burgener Drive (217) 422-5453
 Decatur, IL 62521 mjhumes@aol.com

THE GLASS HOUSE ANTIQUE MALL
Furniture, Pottery, Glass
Antiques and Collectibles
 I-70 Exit 146, East on SR 40
 8825 E. Pike
 Norwich OH 43767 TEL 740-872-3799

GATEWAY ANTIQUE MALL, INC.
 JUST NW OF MINNEAPOLIS-ST. PAUL, MN
 Next to Super 8 in Rogers, MN
 (I-94/101 intersection)
 Multi-Dealer
 7 days; 10am - 6pm • 763-428-8286
 ELAINE STORCK, OWNER/DIRECTOR

ISAACS ANTIQUES
 (740) 826-4015
 See our booths in Penny Court Mall in
 Cambridge and at White Pillars Antique Mall
 (Route 40, one mile west of
 I-70 Norwich, OH • Exit #164)

PENNY COURT MALL
 637 Wheeling Avenue
 Cambridge, Ohio
 100 Booths 15,000 sq ft
 HOURS: Daily 10-6 Sunday Noon-5
 Closed: Easter, Thanksgiving, Christmas
 Call for other holiday hours 740-432-4369

MARGARET LANE ANTIQUES
 2 E. Main St. New Concord, OH 43762
 Lynn Welker (740) 826-7414
 Cambridge Glass Matching Service
 Hours: Mon-Fri 10-12 AM, 1-5 PM
 or by appointment

 **ur House Antiques**
 Linda & David Adams
 Las Vegas, NV 
 702-838-1341 or
 800-357-7169
 Web: www.OurHouseAntiques.com
 E-mail: David@OurHouseAntiques.com

Farber Glass Inserts

from page 13

97, item #7 in Julie's book) that had a similar starburst pattern). Duncan also provided comport, candle, and vase tops with a threaded stem that were screwed into a Farber chrome base, and one crystal Caribbean line comport top. Heisey provided a Queen Anne line covered lemon dish with dolphin finial in crystal and Sahara, a square crystal thumbprint-styled covered dish with dolphin finial (potentially made by Fenton), threaded Ridgeleigh line candle cups for candlesticks and candelabras, and Victorian line decanters for Tantalus sets. Fenton would appear to have provided a molded leaf design butter dish base and a molded 12-leaf insert used in compotes and candy dishes. Fostoria provided American line tab-handled ice cream/appetizer inserts in crystal and amber for use in 2, 4, and 6-insert Farber Bros. relish and appetizer sets. Morgantown provided cupped and flared bowl amber, amethyst, and green inserts for Farber Bros. cocktails, as well as various milk glass inserts (pitcher, sugar & creamer, salt & pepper, marmalade, and flared bowl cocktail inserts) after

the Cambridge Glass Company closed. New Martinsville/Viking provided a crystal Janice line night set, a Radiance line butter dish base, and a Radiance line cake plate top with threaded stem. Westmoreland provided frosted crystal Lotus line inserts for Farber Bros. comports, relishes, marmalades, a chip 'n dip set, and a lazy susan. They also provided an EAPG-style 240 line comport top, and Princess Feather line plate and bowl inserts. Corning provided a variety of Pyrex glass casseroles, pie plates, and serving inserts for Farber Kraft and Farber Bros. casserole, pie plate, and serving dish holders. They also provided inserts for a number of later Farber Bros. insulated ice buckets.



Julie Sferazza's book on Farber, out-of-print, but often available on ebay.

In Memoriam

David A. Dessens

Long-time NCC member, David Desens, passed away on Good Friday, April 14. David had been completely healthy until four months ago, when cancer of the lining of lungs was discovered. David and his wife, Karen, are well known in the antique world as the owners of Showcase Designs, St. Paul, MN. They equipped antique malls throughout the country with display cases. Furthermore, David and Karen submitted a proposal for showcases in the new NCC museum, and they provided an oral presentation of their proposal at a quarterly meeting of NCC.

David and Karen Desens sold top-of-the-line Cambridge glass from their personal collection several times over the past five years at the NCC Glass Dash during convention. Our deepest sympathy goes to Karen Desens.