



# Cambridge Crystal Ball

Published by the National Cambridge Collectors, Inc. as a resource which informs, invites and inspires people to encourage the continued preservation of the glass produced by the Cambridge Glass Company of Cambridge, Ohio for future generations.

Issue No. 574

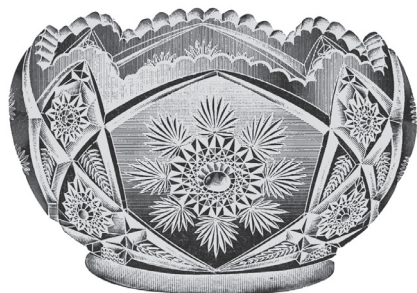
ISSN 2474-5987

January 2024

Copyright © 2024 National Cambridge Collectors Inc., All Rights Reserved

## 2635 Fernland Line

The earliest reference to the Fernland line was found in a 1906 Cambridge catalog. Fernland was apparently phased out some time after 1910.



### *What's Inside*

2635 Fernland Line .....	1
President's Message .....	3
A Successful 2023 Museum Season .....	4
Zoom & Tell October: Creams & Sugars.....	7
Zoom & Tell November: Vases.....	8
2024 Benefit Auction .....	9
2024 NCC Benefit Auction Listing.....	10
eBay Report .....	19
Membership Corner .....	21
Volunteer Opportunity.....	21
NCC Events .....	22
New Members.....	22

# National Cambridge Collectors, Inc.

PO Box 416 Cambridge, OH 43725-0416

## Board of Directors

	2024	
Cindy Arent	Larry Everett	Mike Strebler
	2025	
Ken Filippini	Freeman Moore	Christine Smith
	2026	
Julie Buffenbarger	Doug Ingraham	Frank Wollenhaupt
	2027	
Marti DeGraaf	Lindy Thaxton	Lynn Welker

## Officers

President	Freeman Moore
Vice-President	Julie Buffenbarger
Secretary	-
Treasurer	Mike Strebler
Sergeant-at-Arms	Larry Everett

## Committees

Endowment	Membership
Finance	Technical Decision
Property	Digital Strategy
	Digital Preservation

## Member Services

### Vice President

Member Relations  
Convention  
Member Social Media  
Glass Dash  
Glass Show  
Study Groups  
Webmaster

Freeman Moore  
Freeman Moore, Membership Database  
Julie Buffenbarger & Christine Smith  
David Ray  
Larry Everett & Frank Wollenhaupt  
David Ray, Mike Strebler, Jack Thompson  
Jeannie Moore, Study Group Coordinator  
David Adams

## Development

### Vice President

Campaigns  
  
Events  
  
Projects  
Publicity

Julie Buffenbarger  
Ken & Jane Filippini, Annual Fund Directors  
Larry Everett, Director of the Heritage Society  
Lindy Thaxton,  
Lynn Welker, Auction Managers  
Susan Everett & Frank Wollenhaupt, Jewelry  
Convention: Jonathan Fuhrman

## Education

### Vice President

Crystal Ball  
Digital Archivist  
Programs  
Publications  
Media Productions  
Research

Jack Thompson  
Freeman Moore, Editor  
(open)  
(open)  
Larry Everett, Director of Publications  
(open)  
(open)

## Museum

### Vice President

Public Operations  
Facilities & Grounds  
  
Inventory Management  
Collections  
Museum Gift Shop  
  
Archivist  
Museum Social Media  
Community Relations

Cindy Arent  
Lindy Thaxton, Director of Public Operations  
Cindy Arent,  
Joe Miller,  
Lindy Thaxton  
Lindy Thaxton, Director of Inventory Management  
Lynn Welker, Director of Collections  
Cindy Arent, Gift Shop Manager  
Lynn Welker, Gift Shop Manager  
Lindy Thaxton  
Cindy Arent, Director  
Cindy Arent

## Administration

### Vice President

Accounting & Finance

Larry Everett  
Lisa Neilson, Office Manager

## MEMBERSHIP QUESTIONS?

Please send address changes to:  
Membership - NCC  
PO Box 416  
Cambridge, OH 43725-0416  
or by e-mail to:  
[membership@cambridgeglass.org](mailto:membership@cambridgeglass.org)



## CONTACT US

NCC Business Manager  
Phone: 740 432-4245

[businessmanager@cambridgeglass.org](mailto:businessmanager@cambridgeglass.org)



Freeman Moore, President

e-mail: [president@cambridgeglass.org](mailto:president@cambridgeglass.org)

Secretary

e-mail: [secretary@cambridgeglass.org](mailto:secretary@cambridgeglass.org)

## Heritage Society

*Ensuring the preservation mission of the NCC through planned giving and estate bequests.*

Members of The Heritage Society are those who have included the NCC in their wills or estate plans, thus providing the organization with a secure future.

The mission of The Heritage Society is to foster smart estate planning and to assure that NCC is not forgotten as an important beneficiary. Any pledge is meaningful and appreciated.

All Cambridge collectors - both current and future - will benefit from, and be grateful for your support.

Let us know how we can help with your future plans.

### Museum:

National Museum of Cambridge Glass



Like us on Facebook

Member: Cambridge Glass/National Cambridge Collectors

NCC Website: [www.CambridgeGlass.org](http://www.CambridgeGlass.org)

NCC Museum Website: [www.cambridgeglassmuseum.org](http://www.cambridgeglassmuseum.org)

Cambridge Glass Library Website: [www.cambridgeglassdatabase.org](http://www.cambridgeglassdatabase.org)



# PRESIDENT'S MESSAGE

## *A New Year*

January is typically the time for people to get organized for the year, and NCC is no exception. At our January board meeting, we'll review our 2023 financial report and approve the 2024 budget. I'll highlight those in the February President's Message.

We have some excellent volunteers, but they are the same ones that get asked over and over. We need to get them some relief. I invite each of you to become a volunteer for NCC. There are a multitude of opportunities for you to assist. You could be a committee chair, serve on a committee, run a book table at a local glass or antique show, write articles for the Crystal Ball, run for the board, etc. If the choices seem overwhelming and you cannot decide, then we will work to find a position that fits for you.

There are many areas where we could benefit from more volunteers. You don't have to live in Ohio to volunteer for some functions as they can be done anywhere in our digitally connected world of internet and email. The board will be working on identifying a backup person for existing roles, i.e. succession planning.

This is the time when our nominating committee is actively soliciting candidates to run for the board. A slate of candidates will be adopted at the March meeting, leading to the ballot process with results announced at the June Annual Meeting. The board needs new insights, i.e. you! Contact Elaine Thompson if you have any questions [elainethompson@roadrunner.com](mailto:elainethompson@roadrunner.com).

Cindy Arent and her team at the National Museum of Cambridge Glass do an outstanding job of educating visitors to the museum. A large percentage of our members do not get to Ohio, so they rely on this newsletter to provide them with news and education about the organization and they love seeing the museum pictures on Facebook. The museum is closed during January and February, allowing time for cleaning,

organizing, and refreshing before members show up for the March auction.

Board activities: Dave Rankin's passing in June left a vacancy on the board, which was filled by Stu Sandler, First Alternate from the 2022 election. Stu resigned from the board in November to focus on his work/life balance. Lisa Helm, First Alternate from the 2023 election declined. Following our By-Laws, the board appointed Doug Ingraham to fill the vacancy. Doug chairs our Endowment Committee and we welcome his expanded involvement.

The Board of Directors meets most months to provide direction to the organization. The five operational vice-presidents (Administration, Development, Education, Member Services and Museum) report every time about what is being worked on in their areas. Committees report to the board as needed. The board is working to develop a strategic plan. This would describe how NCC would be different in the future and what we have to do to get there, i.e. measurable goals.

### *What's coming?*

I'm excited to see the March Benefit Auction listing in this issue. As before, you can submit absentee bids if you are not able to attend in-person. Otherwise, I hope to see you March 15-16.

What's on your Cambridge "wish list" for this year and beyond, and how can we help?

Stay energized and share the word!

*Happy New Year,*

Freeman Moore  
[president@cambridgeglass.org](mailto:president@cambridgeglass.org)

# A Successful 2023 Museum Season

By Cindy Arent

As we wrap up 2023, we look back on the many unforgettable experiences we had throughout the year: meeting new visitors, greeting old friends, meeting NCC members on their first visit to the museum and also the motorcoach groups.

This year during the Holiday Season at the Museum, many new friends were made, good publicity was received and memories were made! Speaking of good publicity, the Museum was included in a two-page article in the Travel Section of The Cleveland Plain Dealer in November. In December, a reporter from the Ohio Newsroom, a statewide reporting partnership between the largest public radio stations that expands news coverage throughout Ohio, visited the Museum.

As the holiday season began to unfold in early November, the Museum was a clue site during the very well attended Sherlock Holmes Weekend. Later that week we partnered with Mosser Glass during the Dickens Victorian Village Chocolate Walk, distributing chocolate at the Museum. 350 tickets were sold for the evening and most ticket holders had never been inside the Museum! It was a wonderful evening filled with great conversation and laughter.

The Annual Museum Holiday Open House was held Friday and Saturday during Thanksgiving weekend and was very well attended. Visitors caught the spirit of the season as they enjoyed all areas of the museum. They also did a lot of shopping in the Museum Gift Shop on “Shop Small” Saturday.

Again, this year, we received advertising and marketing funding through the Grant Assistance Program from the Cambridge/Guernsey County Visitor & Convention Bureau. After I submitted the final report in December for approval, they called to let me know the check for \$5,000 was ready. This grant enables us to participate in beneficial promotional opportunities and build on the success of previous years.

I can't say enough about our volunteers and docents. They go above and beyond every single day and we are very fortunate to have this dedicated group needed to staff a large group of Museum visitors.

Thank you all for your support and have a  
Happy & Healthy New Year!



During the Dickens Victorian Village Chocolate Walk, we partnered with Mosser Glass to distribute chocolate at the Museum. (L-R) Lindy Thaxton, Mindy Mosser Hartley, Sandi Rohrbough, Cindy Arent and Sharon Bachna were ready to greet 350 ticket holders during the event.



The National Museum of Cambridge Glass was a clue site during the Sherlock Holmes Weekend in early November.



A wonderful addition to the Heatherbloom Dining Room Exhibit! The 80 ounce Heatherbloom pitcher and tumblers etched Portia are on loan from Bill Alexander. Many thanks to Bill and to Jack and Elaine Thompson for transporting!



Lindy Thaxton, Sharon Bachna and Mindy Mosser Hartley are shown passing out chocolate to a few of our many visitors. People who had never been to the Museum before were amazed at the beautiful glass displays.



When a bus group is ready to leave the Museum, we board the bus to thank them for coming. During the holidays, we ask them to join us in singing a short Christmas song. They all join in with smiles and laughter.



Debbie Robinson, Executive Director of the Cambridge/Guernsey County VCB, presented the \$5000 check for the grant to Cindy Arent and Lindy Thaxton. We thank the VCB for their continued support!

Milton Conaway moved his family to Cambridge, Ohio in 1902 to work at the newly opened Cambridge Glass Company. His skill was applying the handles to pitchers. Today his granddaughter, Sally Conaway Slattery, wears a pin with his photo as she volunteers at the Museum greeting visitors.



NCC members Nathan and Jill Koman and their family arrive each year during the Holiday Open House for a visit. It has become an annual tradition for the family to dress as glassworkers and take a photo on stage at the Museum. The children have grown so much since the first photo!

# Zoom & Tell October: Creams & Sugars

by David Ray

The October Zoom & Tell program, led by Gwenell Pierce, focused on the wide variety of cream & sugar sets produced by the Cambridge Glass Company. Gwenell added several non-Cambridge examples from other companies for comparison. At the beginning of her program, Gwenell clarified the term “creamer”, which most glass collectors use, is not correct. Cambridge never used this term and only referred to the small pitcher as a “cream.” The production of cream and sugar sets began with the opening of the company in 1902. Most of the glass produced by Cambridge was tableware, so cream and sugar sets were produced in nearly every line and color every produced at the company. Gwenell stated she has more than 200-300 sets of Cambridge and non-Cambridge cream and sugar sets in her collection.

Cream and sugars sets were produced in multiple sizes. For example, the Caprice line offered three sizes of cream and sugar sets. Usually, the smallest size was called the individual cream and sugar. Most lines only offered two sizes. Because cream and sugar sets were part of tableware lines, they were decorated with etchings (including gold filled) and engravings to match. Sometimes the individual cream and sugars were sold with under trays. As with most items produced by the Cambridge Glass Company, customers could purchase cream and sugar sets for any occasion. Some sets are very utilitarian while some are decorated to compliment the most elegant occasion.

The December Zoom & Tell program theme is “Items with Lids”. Some examples include: ginger jars, candy boxes, butter dishes, cracker jars, sugar bowls, sweet meats, urns, and more. If you have a computer or cell phone with internet connection, you can join the monthly Zoom & Tell programs. Downloading the Zoom application only requires a couple clicks, so please let me know if you need assistance. All Zoom & Tell programs are recorded and can be viewed at any time. Email Freeman Moore at [president@cambridgeglass.org](mailto:president@cambridgeglass.org) for a link to any past Zoom & Tell program. ■



# Zoom & Tell November: Vases

by David Ray

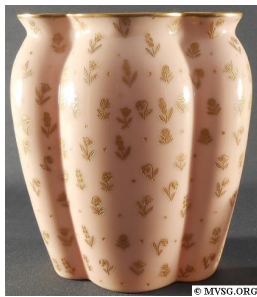
Many Cambridge glass enthusiasts joined the November Zoom & Tell program on vases. Les Hansen led the November program and shared many unique examples of Cambridge vases from his collection. Since the company's opening in 1902, vases were part of nearly every line of glassware Cambridge produced. Cambridge produced a variety of vases ranging from 3.5" to 18" tall. Some vases were designed to hold a single flower while other vases were created to hold large bouquets. The Cambridge "palace vase" measures 18" tall. I have often wondered what type of flower possesses a stem long enough to look appropriate in this vase. Any ideas? In addition to floral vases, Cambridge produced vases for specific purposes. For example, the sweet potato vase, the bulb vase, the sweet pea vase, the ivy vases and rose bowls. Several examples of each of these style vases were shared during the Zoom program.

One of the unique characteristics of most Cambridge vases is they are equally attractive with or without flowers. Cambridge designed vases to be decorator pieces. Beyond the unique and elegant designs, Cambridge used vases to show off many of its finest

and most elaborate decorating styles. Vases are found with yellow and white gold encrusted etchings, gold silk screens and enamel decorates, including Japonica. Silver decorating companies purchased Cambridge vases and applied beautiful silver overlay designs. Due to their unique designs and overall attractiveness, vases are often a large part of many glass collections.

The January Zoom & Tell program will be held on Tuesday, January 9 at 8:00 pm EST. The theme of the January program is "Favorite Finds of 2023". We are asking each Zoom participant to identify a few of your favorite additions to your collection in 2023. If you did not add any glassware to your collection in 2023, then pick a couple of your favorite purchases from previous years. We look forward to seeing what wonderful treasures you found in 2023. If you missed one or more of the Zoom & Tell programs, then email Freeman Moore at [president@cambridgeglass.org](mailto:president@cambridgeglass.org) to receive a link. All past Zoom & Tell programs are recorded and can be viewed at any time.

Until next time, happy collecting! ■





# National Cambridge Collectors, Inc.

## 2024 Benefit Auction

Saturday, March 16, 2024

Pritchard Laughlin Civic Center

7033 John Glenn Hwy • Cambridge, Ohio

### INFORMATION

Preview at 8:30 a.m. Auction starts at 9:30 a.m.

Craig Connelly, Auctioneer Admission: \$2.00

All glass in the auction is guaranteed to be Cambridge. The Auction Managers have checked all glass carefully for verification and damage. Any piece purchased should be examined immediately by the purchaser, and returned within five items if not as represented. All damages are indicated in this catalog; last minute changes or addenda will be announced by the Auction Managers immediately prior to the auction. If no color is indicated herein, the item is crystal. There are no reserves and no buyer's premiums are charged. Photographs of auction attendees and activities may be taken for NCC promotional purposes.

**TERMS:** Payment is expected in cash the day of the sale; checks will be accepted with proper identification.

**CATALOG:** Lots will be sold in the order printed herein. A number in parenthesis ( ) at the end of a listing indicates the number of that item available for sale. The auctioneer will announce whether such multiples are being sold individually or as a lot. If multiple items are being sold individually, a winning bidder may take any number available. If the catalog indicates "set," "pair" or a similar term, the lot is sold as such.

**ABSENTEE BIDS:** Anyone wishing to bid absentee, may do so by mailing their bids to the Auction Committee at the address below. All bids must be received by the end of Thursday prior to the auction to be eligible, so please allow enough time for the postal service to do its thing. **They must contain all the following information:**

- List showing the lots desired and the maximum bid for each lot.
- Valid Credit Card, VISA & MasterCard accepted. The following is required for a proper credit card transaction:
  1. Exact name as it appears on the card
  2. Expiration date
  3. 3-Digit Security Code on the back
  4. Exact address credit card statement is billed to
  5. Phone number
- Address where winning lot(s) are to be shipped to.

Bids will be executed secretly and a winning bidder will pay only the final auction price. If there are multiple absentee bids for the same lot, bidding will commence on the floor at the second highest bid, effectively shutting out all by the highest absentee bidder.

**Shipping:** Items can be shipped to street addresses only. WE CANNOT SHIP TO P.O. BOXES. If you are the successful bidder, your credit card will be charged as follows: **Final auction price + 5% transaction fee + cost of shipping.**

**MAILING ADDRESS:** All absentee bids must be mailed to:

**NCC Auction Managers**

**P.O. Box 416**

**Cambridge, OH 43725**

**BIDS MUST BE RECEIVED BY  
THURSDAY, MARCH 14, 2024 TO BE ELIGIBLE**

**QUARTERLY MEETING:** The Quarterly Meeting of the NCC will be held on Friday, March 15 at 7:30 p.m. A preview of the auction glass will be presented. Show & Tell glass is also welcome at the meeting. All are welcome!

For additional copies of the catalog listing as well as detailed information on the entire auction, please visit the website at <https://www.cambridgeglass.org> under **Annual Auction.**

**Additional copies of this catalog are included with admission to the auction.**

## 2024 NCC Benefit Auction Listing

Lot	Cost	Description
1	_____	1206 Willow Blue 76 oz. Jug, twisted optic
2	_____	P100 Crystal 32 oz. Beverage Jug or Martini Pitcher, Sterling Base, Etch Chantilly
3	_____	3400/38 Gold Krystol 80 oz. Ball Jug and 12 oz. Tumblers (4), Etch Gloria (Set)
4	_____	3400/9 Crystal 7" Covered Candy, Etch Rose Point
5	_____	3400/152 Crystal 76 oz Jug (Doulton), Etch Rose Point
6	_____	Pristine 70 Crystal 20 oz. Milk Jug, Etch Rose Point
7	_____	3121 Crystal 1 oz. Cordials, Etch Wildflower ( 7 ) (LOT)
8	_____	2651 Crystal Nearcut Inverted Feather Punch Bowl (No Foot) and ( 6 ) Cups, (Set), Chip on bowl base
9	_____	6004 Crystal 10" Vase, Sterling Foot, Etch Chantilly
10	_____	1309 Crystal 5" Vase, Gold Encrusted Wildflower D1047
11	_____	3500/57 Crown Tuscan 8" 3-part Candy and Cover, Charleton Heron Decoration
12	_____	274 Crystal 10" Bud Vases, Etched Rose Point, (Pair)
13	_____	214/215/216 Moonlight/Crystal/Gold Krystol Caprice 3-Piece Ash Tray Set
14	_____	1 Carmen Muddlers, (Pair)
15	_____	1070 Royal Blue 2 oz. Pinch Tumblers (6) (LOT)
16	_____	SS11 Crystal Sea Shell Statuesque 7" Comport, no shell detail
17	_____	SS50 Crystal Sea Shell Dolphin Candlesticks, Moonstone, (Pair)
18	_____	2 Crystal Everglade 5" Candlesticks, (Pair)
19	_____	1237 Royal Blue 10" Footed Vase
20	_____	W79 Milk Mount Vernon 12 - 5" Ivy Ball
21	_____	960 Peach-Blo Cream & Sugar, Aero Optic, (Pair) Signed
22	_____	3500/77 Crystal 4 1/2" Candy Box & Cover, Etch Elaine
23	_____	Milk Sugar, Marmelade w/Spoon, Salt, & Pepper, Brass Farber Holders, Lids, Tray & Spoon
24	_____	3776 Crystal 7 oz. Tall Sherbets, Cut Maryland 985 (6) )LOT)
25	_____	993 & 3400/647 Crystal 12 1/2" Bowl & 5 1/2" 2-Lite Candlesticks (Pair), All Etch Bordero, Gold Encrusted, (Set)
26	_____	3400/38 Amber 80 oz. Ball Jug, Crystal Handle
27	_____	3500/113 Crystal 15" x 4 1/2" 4-Compartment Relish, Etch Elaine
28	_____	54 Azurite 7" Footed Cupped Bowl
29	_____	2766 Emerald Nearcut Thistle 8 1/2" Nappy, A Shape, Gold Decoaration, Signed, Top Worn
30	_____	3011 Carmen Statuesque Cupped 7" Comport, Short Stem
31	_____	3103 Carmen 3 oz. Wines (2) (LOT)
32	_____	319 Carmen 9 oz. Georgian Tumbler ( 6 ) (LOT)
33	_____	124 Moonlight Caprice 3 Part Celery and Relish and #94 Divided Individual Nut (LOT)
34	_____	89 Moonlight Caprice Marmalade and Cover
35	_____	135 Moonlight Caprice Crimped Candy
36	_____	131 Moonlight Caprice 8" Footed Plate
37	_____	22 Moonlight Caprice 8 1/2" Plates (6) (LOT)
38	_____	23 Moonlight Caprice 7 1/2" Plates (8) (LOT)
39	_____	112 Moonlight Caprice 3-piece Twin Salad Dressing with Center Handle and (2) Moonlight Spoons
40	_____	455 Jade 8 1/2" Comport with Flat Rim
41	_____	782 Ebony 8" Vase , Etch 717
42	_____	95 Helio 1 lb Candy Jar and Cover
43	_____	222 Helio 6" Candlesticks with Gold Trim (Pair), Minimal Gold Wear
44	_____	3085 Two Tone 9 oz. Goblet, Light Emerald Foot & Peach-Blo Bowl, Etch Imperial Hunt

45	_____	70 Ebony 8” Candlesticks (Pair)
46	_____	1044 Peach-Blo 10” Swan (Type 1), Signed
47	_____	1044 Crystal 10” Swan (Type 1) Satin Finish
48	_____	3400/1185 Gold Krystol 10” Bowl, 2 Handle, Etch Gloria, Signed
49	_____	3400/48 Crystal 11” Ruffled Bowl, 4 toed, Etch Wildflower
50	_____	3500/60 Crown Tuscan 5 1/2” 1 Handle, 2 Compartment Relish
51	_____	119 Peach-Blo 7” Basket, 10” Tall
52	_____	W90 Milk Glass Caprice 3 oz. Cruet
53	_____	16 Crown Tuscan 7” Seashell Comport, Signed
54	_____	626 Crown Tuscan 3 1/2” Candlesticks (Pair)
55	_____	3900/19 Crystal Mayo, Etch Candlelight
56	_____	3114/1 Crystal 7” Comport, Etch Candlelight
57	_____	432 Ivory Ram’s Head 8 1/2” Bowl and No. 65 9 1/2” Doric Candlesticks (Set)
58	_____	3400/91 Crystal 8” 3-compartment Relish, 3-handle, Etch Candlelight, Gold Encrusted, (D/1048 Gold Encrusted Candlelight)
59	_____	3500/652 Crystal 12” Celery, Etch Rose Point, Gold Encrusted, (D/1041 Gold encrusted Rose Point), Mint Gold
60	_____	1042 Carmen 6 1/2” Swan, Type 3
61	_____	1138 Crystal 8 1/2” Seagull Flower Figure Frog
62	_____	92 Moonlight Caprice Individual Salt & Pepper Plastic Tops (Pair)
63	_____	299 Mulberry 5” 3 Footed Covered Candy
64	_____	1402 Amethyst Tally-Ho 10” Hat Vase
65	_____	Crown Tuscan 5” Seashell Plates, Charleton Decoration (3) (LOT)
66	_____	1327 Crystal 1 oz. Cordial, Etch Chantilly
67	_____	7966 Crystal 1 oz. Cordial, Cut Rondo
68	_____	3077 Willow Blue 1 oz. Cordial
69	_____	3011 Heatherbloom Statuesque 4 oz. Claret
70	_____	W105 Milk Glass 9” Seashell Bowl, 3 Toed
71	_____	575 Crown Tuscan Cornucopia Vases, Etch Chantilly (Pair)
72	_____	2800/237 Azurite Community Tumble Up Base Only
73	_____	270 Ebony Boudoir Lamp, Some Wear to Gold Trim
74	_____	Crystal Nearcut Sweetheart Toy Butter
75	_____	Crystal Cambridge Logo Oval Display Sign
76	_____	84 Crystal Crystal Mt. Vernon 14 oz. Steins (2), Signed (LOT)
77	_____	30 Crystal Martha Washington 80 oz. Jug
78	_____	1402/77 Crystal Tally-Ho 13 in.Punch Bowl
79	_____	3400/14 Crystal 7” Comport, Etch Candlelight
80	_____	680 Amber Dresser Compact, with Brass Lid and Hand Mirror, Signed (Set)
81	_____	1121 Amber Ice Pail w/Tongs, Etch E710, Signed
82	_____	432 & 65 Jade 3-piece Ram’s Head Console Set, 8 1/2” Bowl and No. 65 9 1/2” Doric Candlesticks (Set)
83	_____	299 Crystal 5 1/2” 3-Ftd. Candy with Carmen Rose Finial
84	_____	680 Mulberry Compact, Gold Encrusted, Early Wildflower, Roughness Inside Lid & Minimal Wear
85	_____	37 Peach-Blo Martha Washington 1 lb. Covered Candy
86	_____	197 Ivory 6 oz. Blown Atomizer Gold Encrusted 710, Some Gold Wear
87	_____	856 Willow Blue 11 1/4” Bowl, Etched 731, Signed Scratched
88	_____	135 Helio 13 1/2” Cheese and Cracker (Set)
89	_____	1238 Crystal 12” Keyhole Vase, Etch Rose Point
90	_____	1234 Carmen 12” Keyhole Vase

91	_____	Carmen/Ebony Game Set, Footed, Heart, Spade, Club & Diamond
92	_____	3400/38 Carmen 80 oz. Ball Jug
93	_____	3400/92 Carmen 32 oz. Ball Jug Decanter
94	_____	1043 Crown Tuscan 8 1/2" Swan with D/1018 gold stippled
95	_____	3500/13 Amber Sugar Basket Chrome Handle & Silver Tongs
96	_____	732 Blue Bell Refectory Bowl, No Decoration
97	_____	173 Light Emerald 12" x 10" Oval Sandwich Tray, Center Handle, Etch Willow Scene
98	_____	671 Crystal 6" Ice Tub, 2 Handle
99	_____	72 Crystal 6" 2-lite Candlestick (Version 2), Cut 920 Killarney (1)
100	_____	3400/38 Crystal 12 oz. Tumbler, Etch 754 Portia (4) (Set)
101	_____	3400/7 Crystal 5 1/2" Comport for Cheese and Cracker, Etch 746 Gloria
102	_____	17 LaRosa Caprice 5 3/8" Saucer with Seat (4)
103	_____	1215 Amber 2 Compartment Tray, 2 handle, (4 ) Signed (LOT)
104	_____	502 Crystal Virginian 5 1/2" 2-lite Candlesticks, Etch 754 Portia, (Pair)
105	_____	1341 Amber 1 oz. Cordial Tumblers (6) (LOT)
106	_____	646 Crystal 5" Candlestick, Etch 773 Wildflower (Pair)
107	_____	243 Amythyst Caprice 8 1/2" Vase, Plain Top
108	_____	243 Royal Blue Caprice 8 1/2" Vase, Plain Top
109	_____	244 Amber Caprice 4 1/2" Vase. Plain Top
110	_____	232 Moonlight Caprice 5" Ball Vase, 2 3/4" Opening
111	_____	69 Crystal Caprice 7 1/2" Candleholder, (2) No. 5 prisms, (1)
112	_____	119 Peach-Blo 83 oz Jug, Ice lip, Etch Martha
113	_____	550 Lt. Emerald Sponged Tankard, Footed, Wide Optic and #550 Sponged 10 oz. Lemonade Mug, wide optic (4), mugs signed (Set)
114	_____	73 Caprice Reflector Candleholder (1)
115	_____	1917/87 Blue 1/Nite Blue 1/4 lb. Candy Jar with Cover, Wide Optic
116	_____	95 Nite Blue 1 lb. Candy Jar, Wide Optic
117	_____	1314 Carmen 3" Footed Ashtray
118	_____	1066 Carmen Oval Cigarette Holder, Ashtray Foot
119	_____	935 Peach-Blo 64 oz. Oval Pitcher, Tulip Etch 518
120	_____	402 Peach-Blo 12" Vase, Etch 717 with D/100 Gold Encrusted Betty Border (Trim Wear Inside)
121	_____	5 Primrose 7" Cupped in Bowl, Black Edge Lines Rim & Foot
122	_____	3011/25 Royal Blue Statuesque 4 1/2" Ivy Ball, Cambridge Label
123	_____	3011/26 Crystal Statuesque 4" Bud Vase
124	_____	1448 Amber 10" Aero Optic Vase
125	_____	4000/216 Crystal Cascade 8" Punch Bowl Base/Ashtray
126	_____	86 Helio 8" Footed Cylinder Vase
127	_____	798 Amber 9" Flip Vase, Wide Optic, Etch Martha
128	_____	W101 MilkGlass Seashell 4 1/2" x 3 1/2" Cigarette Box, Gold D/1018 Stippled, Cambridge Label
129	_____	W111 MilkGlass Seashell BonBon, Charleton Roses Decoration, Charleton Label 2031
130	_____	SS11 Crown Tuscan Seashell 7" Nude Stem Comport, Charleton Roses & Bows Decoration, Charlton Label
131	_____	1273 Ivory 9" Candlesticks (Pair) , D/619 Gold Encrusted Decorate, Slight Trim Wear
132	_____	SS42 Crown Tuscan Seashell 7 1/2" Flower Center, Charlton Roses Decoration, Charleton Label Remnant 4375
133	_____	782 Amber 8" Vase Wide Optic, Etch Betty
134	_____	94 Helio 7 x 8 1/4" Sweet Pea Vase, Non Cambridge Victoria Pattern Silver Border Decoration, Hanging Floral Baskets and Cameos
135	_____	437 Peach-Blo 9 1/2" Candlesticks, 715 Willow Etch Border, (Pair)

136	_____	236 Mulberry 8” Candlesticks (Pair)
137	_____	1506/2 Willow Blue 5” Novelty Basket, 2 Handle, Signed
138	_____	2780 Green Carnival Nearcut Strawberry Puff Box & Cover, (Beautiful Color)
139	_____	39 Ivory 11 1/2” Bowl, Etch Blue Willow, (Etch But No Color)
140	_____	638 Willow Blue Candlesticks , Etch Gloria, (Pair)
141	_____	3122 Heatherbloom 9 oz. Goblet, Crystal Stem & Foot
142	_____	20 Crystal Bobeche, 4 1/2”, 4-lock , Etch Gloria, with 10 Prisms
143	_____	554 Ivory 7” Plate, Blue Enamel Encrusted Etch Willow, With Gold Bands, Inner Trim Wear
144	_____	W98 Milk Glass 4 1/2” Swan No. 1050 Candlestick, Type 3
145	_____	1636 Crystal Peg Blue Jay, 4 1/2”
146	_____	3121 Crystal 2 1/2 oz Wine, Etch Wildflower, Gold Rim on Bowl & Foot
147	_____	3797/69 Ebon Cambridge Square 2-Light Candlesticks (Pair)
148	_____	3797/78 Ebon Cambridge Square 9 1/2” Footed Vase
149	_____	3187 Set 4 oz. Cockails (Mocha, Pink, Moonlight, Forest Green, Tahoe Blue, Pistachio, Amethyst) (Set)
150	_____	1040 Crystal 3” Individual Swan Nut (Satin Finish With Orange and Black Enamel), Type 2, Signed
151	_____	W120 Milk Dresden Lady Figurine
152	_____	6004 Crystal 6” Footd Vase with Gold Encrusted Butterfly Etch
153	_____	3011/7 Topaz Statuesque 4 1/2 oz. Claret Optic
154	_____	3011/6 Crystal Statuesque 5 oz. Roemer
155	_____	3400/107 Gold Krystosl 76 oz. Jug , Etch Portia
156	_____	3035 Heatherbloom Tall Sherbet/Champagne
157	_____	1078 Willow Blue Decagon 12 1/2” Oval Meat Platter/Service Tray, Signed
158	_____	274B Moonlight/Crystal 10” Crystal Bud Vase Applied to Moonlight Blue Control Bubble Paperweight Base, <b>RARE SAMPLE</b>
159	_____	51 Crystal Caprice 9 1/2” Deep Bowl, Silver and Enamel Morning Glory Decoration, <b>RARE</b>
160	_____	3400/71 Crystal 3” 4 Footed Nut Cup, Etch Portia, Signed
161	_____	Carrara Small Size Doorknobs, Original Fittings, <b>UNUSUAL</b>
162	_____	Crystal Polished Large Doorknobs, Original Fittings
163	_____	2640 Crystal Nearcut Lotus Water Bottle
164	_____	3500 Mocha 1 oz. Cordial, <b>UNUSUAL</b>
165	_____	3450 Royal Blue Nautilus 1 oz. Cordial
166	_____	1402/100 Carmen Tally-Ho 1 oz. Cordial
167	_____	3077 Royal Blue 1 oz. Cordial
168	_____	3121 Amber 1 oz. Cordial, <b>HARD TO FIND</b>
169	_____	3011/14 Forest Green Statuesque 1 oz. Cordial
170	_____	3011/13 Amethyst Statuesque 1 oz. Brandy, Satin Stem
171	_____	1402/13 Forest Green Tally-Ho 1 oz. Cordial
172	_____	3122 Crystal 1 oz. Cordial, Etch Portia
173	_____	3122 Carmen 1 oz. Cordial
174	_____	3011/13 Forest Green Statuesque 1 oz Brandy, Crystal Stem/Foot
175	_____	3011/13 Odd Green Statuesque 1 oz Brandy, Crystal Stem/Foot
176	_____	3011/13 Gold Krystol Statuesque 1 oz Brandy, Satin Finish Stem and Foot
177	_____	3011/13 Amythest Statuesque 1 oz Brandy, Crystal Stem/Foot
178	_____	3105 Amber 1 oz. Pressed Rose Point Cordial
179	_____	1066 Crystal 1 oz. Cordial, Etch Diane
180	_____	1327 Moonlight Blue 1 oz. Cordial
181	_____	1066 Royal Blue/Crystal Stem 1 oz. Cordial <b>HARD TO FIND</b>
182	_____	3500 Crystal 1 oz. Cordial, Plain

183	_____	3121 Crystal 1 oz. Cordial, Gold Encrusted Portia
184	_____	3126 Madeira 1 oz. Cordial, Etch Portia, <b>RARE</b>
185	_____	1327 Mocha 1 oz. Cordial
186	_____	3121 Gold Krystol 1 oz. Brandy
187	_____	3575 La Rosa Stradivarius 1 oz cordial
188	_____	3575 Moonlight Stradivarius 1 oz cordial
189	_____	3126 Amethyst 1 oz cordial
190	_____	1144 Crystal Eagle Figure on Ball <b>RARE</b>
191	_____	3400/69 Forest Green After Dinner Cup & Saucer
192	_____	3400/102 Crown Tuscan 5" Globe Vase Gold Encrusted Diane
193	_____	40 Rubina 10" Bowl, Panel Optic
194	_____	80 La Rosa 13" Caprice Cupped Salad Bowl, Some Scratches
195	_____	4022/42 Crystal 11" Nearcut Style Basket, Cut Chrysanthemum
196	_____	397 Forest Green 12" 5 Compartment Celery & Relish Tray with Cover and Chrome Tray, T ray scratched
197	_____	48 Ivory 10" Large Comport , D/642 Enameled Basket Decorate
198	_____	500 Rubina 8" Honeycomb Tall Comport, Decent Color
199	_____	1044 Amber 10" Swan, Type 1, Signed
200	_____	1315 Crystal 5" Bunny Box and Cover (no fur detail)
201	_____	1043 Carmen 8 1/2" Swan, Type 3
202	_____	222 Ivory 6" Candlesticks with Black Enamel and White Daisy Decoration (Pair)
203	_____	3500 Royal Blue 3 oz. Cocktail, 1037 Gold Overlay, Great Gold
204	_____	3500 Royal Blue 6 oz. Tall Sherbet, 1037 Gold Overlay, Great Gold
205	_____	3105 Carmen 10 oz. Pressed Rose Point Goblet
206	_____	3105 Carmen Pressed Rose Point Cigarette Holder or 5 oz. Tumbler
207	_____	3105 Royal Blue Pressed Rose Point Cocktail
208	_____	3121 Crystal Tall Sherbets, Gold Encrusted Rose Point (6) (Set), Great Gold
209	_____	180 Azurite Top Hat Cigarette Holder
210	_____	Windsor Blue Top Hat Cigarette Holder (Buttons & Daisys) Degenhart Mold
211	_____	124 Helio 3 1/2" Favor Basket with Reeded Handle, (dated 1922) Scalloped Edge
212	_____	319B2 Mandarin Gold Georgian Basket (oval)
213	_____	319B2 Emerald Georgian Basket (oval)
214	_____	4 and 200/18 Jade Console Set 7 3/4" Bowl with Ebony Non Cambridge Base , 7 1/2" Candlesticks (Pair)
215	_____	Crown Tuscan Lamps made from 1301 vases, Gold Encrusted Daine (Pair)
216	_____	1140 Gold Krystosl Everglade 15" Cabaret Bowl with Rolled Edge (Swan Design)
217	_____	46 Windsor Blue 7 1/2" Shell Flower Holder
218	_____	47 Windsor Blue 9 1/2" Cornucopia Vase
219	_____	509 Peach-Blo 8 3/4" Two Kid Flower Figure Frog
220	_____	518 Peach-Blo Satin 8 1/2" Draped Lady Flower Figure Frog
221	_____	518 Amber 8 1/2" Draped Lady Flower Figure Frog
222	_____	513 Crystal 13" Draped Lady Flower Figure Frog
223	_____	3011/7 Crystal Statuesque Optic Clarets, Satin Finish stem only (2) (CHOICE)
224	_____	3011/2 Forest Green Statuesque Table Goblets (2) (CHOICE)
225	_____	3011/7 Forest Green Statuesque Claret
226	_____	388 Ebony 4" Ash Tray, Sterling Terrier Overlay, Signed
227	_____	SS31 Crown Tuscan Seashell 8" Oval Shell, Charleton Blue Mist Decoration
228	_____	95 Azurite 10 1/2" 1 lb. Candy and Cover, Gold Trim D610 Border
229	_____	Nite Blue Samovar, Etch 710 with cup, Century Silver Company
230	_____	Carmen Lamp (made from vase), Gold Encrusted Diane, metal worn and no shade

231	_____	Opal Imperial Glass Rolling Pin, Wood Handles
232	_____	84 Light Emerald 12" Cylinder Vase, Chrysanthemum Etch and BettyBorder, Gold Trim
233	_____	3400/4 and 647 Crystal 12" Gold Encrusted Rose Point 4-Ftd. Bowl, and 2-light Gold Encrusted Rose Point Candlesticks (Pair) Great Gold
234	_____	1957/100 and 1957/121 Crystal Console Set, 10" Sonata Oval Bowl, 1-light Sonata Candlesticks (Pair), Labels on all 3
235	_____	1066 Amber 12 oz. Tumbler, Sham Bottom, Etch Apple Blossom, <b>UNUSUAL</b>
236	_____	3122 Forest Green 7 oz. Tall Sherbet, Etch Diane (2) <b>UNUSUAL</b>
237	_____	43 Carmen Martha Washington 7" 3-compartment Candy Box
238	_____	1090 Amethyst Decagon 7" Comport, Etch Gloria, Silver Encrusted, Wear Bottom & Top
239	_____	3795 Crystal Allegro Sherbet, Engraved Fascination, (4), 2 Labels (Set)
240	_____	2358 Ebony 10" Vase, Iridized with Gold Cattail Decoration
241	_____	851 Crystal Decagon Ice Pail, Metal Handle and Tongs, D/987 (Scotty), signed
242	_____	3150 Forest Green Nautilus 7" Ftd Vase, Unknowen Engraving, <b>UNUSUAL</b>
243	_____	732 Amber 12" Refectory Bowl
244	_____	W65 Milk Glass Mt. Vernon No. 1 Goblets (2) (LOT)
245	_____	1 Moonlight 2 1/2" Star Candlesticks (Pair)
246	_____	1307 Crystal 5" 3-Lite Candlesticks, Short Post (3) (LOT)
247	_____	65 Ebony 9 1/2" Doric Candlesticks, Version 2, Gold Trim (Pair) (some gold wear)
248	_____	Cambridge Arms Crystal 628 Candlestick, 1563 4-Candle Arms (2), 1536 Peg Nappies (6) (Set)
249	_____	3078 Royal Blue Nautilus 12 oz. Ftd. Tumblers (2) (LOT)
250	_____	3104 Gold Krystol Tall hocs (2) (CHOICE)
251	_____	1506/02 Crystal Small 5" Basket in Metal Holder with Handle, Signed
252	_____	3121 Crystal Large Tall Comport, Cut, Sheffield Sterling Foot
253	_____	278 Crystal 11" Vase, Etch Diane
254	_____	1321 Royal blue 28 oz. Decanter with Platinum Rings Decoration
255	_____	2750 Mulberry Colonial Vase, Lily Form
256	_____	1704 Willow blue 5" Top Hat, Pontil Mark
257	_____	111 Azurite 6" 3 Toed Sweetmeat
258	_____	85 Madeira 12" Footed Vase, Etch Hollyhocks
259	_____	1213 Crystal Footed Cigarette Box, Cut Lucia
260	_____	3797/165 Carmen Cambridge Square Covered Candy
261A	_____	3500/109 and 3500/74 Amethyst Rams Head Console Set, 11" 4-Footed Oval Bowl, 4" Candlesticks (Rams Head) (Pair)
261B	_____	66 Mandarin Gold Caprice 13" 4-Footed Crimped Bowl
262	_____	3011/3 Heatherbloom Statuesque 7 oz. Saucer Champagne
263	_____	3011/3 Smoke Statuesque 7 oz. Saucer Champagne
264	_____	3011/25 Smoke Statuesque Ivy Ball
265	_____	1043 Emerald 8.5" Swan, Type 3
266	_____	91 Helio 10" Stick Vase with Gold Decorated Foot
267	_____	277 Ebony 9.5" Vase Gold Encrusted Wildflower, Beautiful Gold
268	_____	278 Ebony 10.5" Vase GE Blossomtime, Beautiful Gold
269	_____	836 Moonlight 5" Oval Flower Block, Patent Applied for 1916
270	_____	3130/2 Blue Cloud 12 oz. Footed Tumbler
271	_____	3060 Blue Cloud 6 oz. Sherbet
272	_____	3130/2 White Rain 12 oz. Footed Tumber
273	_____	437 Ivory 9.5" Candlesticks (Pair)

274	_____	3400/4 and 646 Amethyst 12" Bowl Gold Encrusted Gloria, and 5" Candlesticks Gold Encrusted Gloria (Pair), Minor Wear
275	_____	125 Crystal 14" Pristine Plate, Cut Cambridge Rose, Label, Slight Scratch
276	_____	198 Nite Blue 1 1/2 oz. Cologne with Drip Stopper
277	_____	581 Nite Blue 4" Puff Box & Cover
278	_____	875 Crystal Nearcut String Holder Original Cap <b>RARE</b>
279	_____	1209 Willow Blue Everglades 1 Lite Candlestick
280	_____	3500/26 Amber 11 1/2" Rams Head Fruit Basket
281	_____	3400/92 Royal Blue 32 oz. Ball Jug Decanter and (4) glasses, Sterling Horse and Rider Decoration with 177 6" Stand Chase Chrome (Set)
282	_____	119 Royal Blue 7" Basket, 11" to Top of Crystal Handle, Cambridge Label
283	_____	693/300 Crystal Satin Canape Set, Red Enamel Horse/Rider
284	_____	3400/92 Crystal 32 oz Decanter, Red Enamel Trim, Black Swayback Scottie, (4) 3400/92 2 1/2 oz. Barrels, Matching Trim (Set)
285	_____	1111 Crystal 12" Heron Flower Figure Frog
286	_____	824 Peach-Blo 3-Holder Candlersticks, (Pair) <b>UNUSUAL</b>
287	_____	3600/495 Crystal Martha 5 1/2" 2-Lite Candlesticks, Etch Blossom Time, Gold Encrusted, (Pair), 1 Label
288	_____	3011 Crystal Statuesque 7" Comport, Flared
289	_____	3600/170 Crystal Martha 13" Cake Tray or Salver, Etched Chantilly, scratched
290	_____	648/19 Crystal 6" Candelabrum, #19 Bobeches (3) (LOT)
291	_____	109 Crystal 9 1/2" Dolphin Candlesticks, Flat Foot, (Pair)
292	_____	3600/495 Crystal Martha 5 1/2" 2-Lite Candlesticks, Etched Wildflower, (Pair)
293	_____	25 Carmen Martha Washinton 10 1/2" Bowl
294	_____	54 Crystal Arcadia 10 1/2" Flared Bowl
295	_____	W61 Milk Martha Washington Footed Cream & Sugar, Set
296	_____	3500/154 Crystal 3-Lite Candlesticks (3)
297	_____	499 Emerald 6.5" Calalily Candlesticks (Pair)
298	_____	499 Mandarin Gold 6.5" Calalily Candlesticks (Pair)
299	_____	1402/88 Royal Blue 11" Tally-Ho Pan Bowl, Signed
300	_____	3600/163 Emerald 8.5" Asparagus Plate
301	_____	2647 Crystal Nearcut Dorothy Tall Footed Jelly Comport, Signed
302	_____	2766 Crystal Nearcut Thistle 7" basket
303	_____	1234 Crystal 12" Keyhole Vase, Etch Diane, Slight Stain
304	_____	1070 Peach-Blo Pinch Decanter with Golf Ball Stopper, Stained
305	_____	3400/141 Crystal Doulton Jug, Etch Wildflower
306	_____	518 Mocha 8 1/2" Draped Lady Flower Figure Frog
307	_____	518 Peach-Blo 8 1/2" Draped Lady Flower Figure Frog
308	_____	512 Peach-Blo Satin Rose Lady Flower Figure Frog
309	_____	513 Peach-Blo Satin 13" Draped Lady Flower Figure Frog
310	_____	Ivory Samovar, Hand Painted Scene, One Handle Unsoldered, Century Silver
311	_____	1242 Royal Blue 11" Vase with Silver Overlay - Grapes, Leaves and Vines, and a 3 Line Decoration at Throat of Vase, Silver Edging at Top
312	_____	3500/41 Carmen 12" Covered Urn
313	_____	1115 Willow Blue Satin 11" Bashful Charlotte Frog, Crystal Everglade 16" Tulip Plate
314	_____	1253 Ebony Everglade Vase, Tulips and Leaves in Ebony with Partial Satin Highlights
315	_____	Mardi Gras 5 3/4" Mardi Gras Bowl - Round
316	_____	3400/95 Forest Green 4 1/2" Puff Box
317	_____	1070 Ebony Pinch Decanter with Silver Overlay Tavern Scene, and Crystal Stopper



318	_____	6004 Crystal 8" Footed Vase, Etch Daffodil
319	_____	1613 Crystal 17" Hurricane Lamps (Pair) , 1613/1632/29 parts
320	_____	3600/156/69 Crystal Oyster Plate & Sauce Cup (Set)
321	_____	134 Crystal Virginian 10 1/2" Footed Cake Salver
322	_____	3011/25 Crown Tuscan Statuesque Ivy Ball
323	_____	3011/26 Crystal Statuesque Bud Vase
324	_____	3011/1 Carmen Statuesque 11 oz. Banquet Goblet
325	_____	2760 Crystal Archfoot Daisy Electric Lamp, 22" Tall, All Original
326	_____	944 Amber Satin Cream/Sugar Set, Etch 725, Gold Encrusted , Gold trim worn
327	_____	39 Helio Flat Rim Bowl, Gold Encrusted 519 Border
328	_____	96 Topaz 1 lb. Covered Candy, Wide Optic
329	_____	96 Crystal, Flashed 1/2 lb. Covered Candy, Wide Optic, Gold wash on Crystal lid and body, Stem/Foot clear Crystal, GE Finial w/Edge Lines on Lid, Candy Jar and Foot
330	_____	Topaz 6 7/8" Twist Candlesticks (Pair)
331	_____	SS1 Crown Tuscan 5" Seashell Plate, Charlton Blue Mist
332	_____	3400/94 Gold Krystol 3 1/2" Puff Box/Cover, Etch Apple Blossom
333	_____	498 Crystal 8 oz. Flat Tumbler, Etch Lilly of Valley, Satin Finish
334	_____	4071/131 Lt. Emerald Wetherford Perfume, Complete
335	_____	Ebony 6" Atomizer, Gold Lines, Cord in tact (cord damage)
336	_____	198 Topaz Cologne, Complete
337	_____	585 Topaz Cologne, For Kresge Co., Beehive stopper, Perfume Complete
338	_____	Topaz Samovar, Martha Grape Etch, Silver Mounts, Century Silver (usual wear)
339	_____	1402/77 78 29 Carmen Tally Ho Punch Bowl, Underplate, and (8) Punch Cups, A red handled ladle with clear bowl that may not be Cambridge (Set)
340	_____	3011/13 Carmen Statuesque 1 oz. Brandy
341	_____	3011/12 Carmen Statuesque 3 oz. Wine
342	_____	3011/7 Carmen Statuesque 4 oz. Clarets (2)(CHOICE)
343	_____	1114 Moonlight 6" Bashful Charlotte Flower Figure Frog
344	_____	518 Moonlight 8 1/2" Draped Lady Flower Figure Frog, Satin Finish
345	_____	5461 Carmen Farber Cocktails (2)(LOT)
346	_____	#3500/25 Crystal 9" Ram's Head Bowl, 2 Handle (Some scratches)
347	_____	#1238 Amber 12" Footed Keyhole Vase
348	_____	W76 Milk Mount Vernon No. 130, 4" Candlesticks, (Pair)
349	_____	#3500/21 Crystal 12" Footed Oval Bowl, Etch Valencia
350	_____	#3121/1 Royal Blue 5 3/8" Tall Comport
351	_____	#136 Crystal Pristine 12" Round Crimped Pan Bowl, Etch Rose Point, scratched
352	_____	#1339 Crystal 6" 3-Lite Candlesticks, (Pair), <b>HARD TO FIND</b>
353	_____	#842 Ebony Decagon 12 1/2" Bowl, Signed
354	_____	2660 Crystal Nearcut Wheat Sheaf Toy Punch Bowl and (5) Cups (Set)
355	_____	3400/647 Crystal 2 lite Keyhole Candlestick, Etch Diane (1)
356	_____	1675 Crystal 8" 3 Part Relish with Eagle Handle
357	_____	3300 Willow blue Moderne Oval 9" Pickle, Signed
358	_____	1043 Crown Tuscan 8" Swan, Charleton Gardenia Decoration
359	_____	236 Aurora 8" Rings Candlesticks (Pair)
360	_____	25 Aurora 14 Panel Bowl
361	_____	767 Willow blue 6" Aero Optic Sweet Pea Vase with Ruffled Edge
362	_____	500/14 Rubina 10" Honeycomb Lily Bowl, Signed
363	_____	935 Crystal Oval Jug with Heavy Sterling Grapes Decoration

364	_____	647 Crystal 2- Lite Keyhole Candlesticks, Cut Candlelight, (Pair)
365	_____	3500/25 Azurite 8” Ram’s Head Bowl & Doric Candlesticks, no décor, worn gold on bowl (Set)
366	_____	SS40 Windsor Blue Seashell 10” Flower or Fruit Center (Flying Lady)
367	_____	3900/166 Crystal 14” Rolled Edge Plate, Etch Rose Point, Scratched
368	_____	44 Forest Green Seashell 6” Flower Center (Snail)
369	_____	868 Light Emerald Decagon 11” Cheese & Cracker, Etch Cleo
370	_____	787 Crystal 8” Footed Vase / Aquaria, Ebony Foot, Etch 732 Majestic
371	_____	319 Dark Amber Jenny Lind 5” Ivy Ball Vase, Cambridge Label
372	_____	3575 Crystal Stradivari 3 oz. Cocktail, Etch Diane (4) (CHOICE)
373	_____	300 Amber 3 Toed Candy Box & Cover, Border Etch 715 Willow
374	_____	1238 Carmen 12” Footed Vase, Crystal Foot
375	_____	1238 Crystal 12” Footed Vase, Etch Wildflower, Etching Slip Inside Top
376	_____	319C Carmen Georgian Covered Candy, Label
377	_____	3797/26 Carmen Cambridge Square 12” Plate, Scratched
378	_____	278 Crown Tuscan 11 1/2” vase, Gold Encrusted Rosepoint
379	_____	3400/17 Ebony 12” Vase, Sterling Overlay
380	_____	3200 Crystal 12” Vase, Cut 2153 Wild Rose
381	_____	W109 Milk Glass Seashell No. 50 - 8” Dolphin Candlesticks (Pair)
382	_____	W87 Milk Glass 10” Urn and Cover Version 2
383	_____	783 Amber 10” Vase, Etch 717, Bird Decoration
384	_____	1330 Amethyst 5” Sweet Potato Vase, (Pinhead nick Inside)
385	_____	3400/1185 Amber 10” Bowl, 2-handle, E 732, Signed, Scratched
386	_____	877 Peach-Blo 11 1/2” Decagon Comport, E727 Gold Trim (slight trim wear)
387	_____	14 Azurite 10” Shallow Cupped Bowl
388	_____	839 Amber Decagon - 15” Oval Flip Bowl, Rolled Edge, E Cleo, signed
389	_____	3400/10 Crystal Center Handle Server, Etch Candlelight, Encrusted Mint Gold
390	_____	1124 Crystal Pouter Pigeon bookends (Pair)
391	_____	2351 Crystal Nearcut Punch Bowl, Base & (6) Cups (Set)
392	_____	3077 Amethyst Cocktails, Optic (6) (LOT)
393	_____	57 Crystal Stratford 6” wide vase
394	_____	3400/38 Crystal Ball Jug 80 oz., Etch Roselyn
395	_____	151 LaRosa Caprice 5” Jelly, 2-handle, Alpine
396	_____	0707 Crystal Private Mold Ash Receiver for Vanadium Corp., E Vanadium Corporation of America
397	_____	3400/91 Crystal 8” 3-Compartment Relish, 3-handle, Etch Candlelight
398	_____	3400/88 Crystal 8 3/4” 2-Compartment Relish, 2-handle, Silver Decorated, signed
399	_____	1380/1 Crystal 26 oz. Square Decanter, Ball Stopper, E Rye
400	_____	3130 Crystal Dinner Bell, E754 Portia
401	_____	1263 Crystal French Dressing Bottle, E Oil & Vinegar, E Martha, (Bruise on bottom of Stopper)
402	_____	54 Crystal Mount Vernon 7” Vase, Silver City Sterling Silver “Vintage” Decoration
403	_____	W60 Milk 5000/79 Heirloom - 32 oz. jug, 1-handle
404	_____	2651 Crystal Nearcut Inverted Feather Ruffled Bowl, Signed
405	_____	30 Crystal 16” Everglade Swan Platter, Scratched
406	_____	3400/1338 Crystal Mount Vernon 3 Tier Candlesticks, Cut Crocus (Mt. Vernon balls) (Pair)
407	_____	2719 Crystal Nearcut LaTouraine Cake Salver
408	_____	78 Amber 3 Part Candy in Ornate Gold Color Metal Holder and Lid
409	_____	14 Mulberry 10” Bowl, Signed, Scratched

Welcome to the eBay Report, featuring Cambridge glass items that sold on eBay over the past month. Selling prices are rounded to the nearest dollar. If no color is mentioned, assume that the piece or part of it being discussed is crystal. If I refer to an auction as "incognito," that means that the seller did not know he or she was offering Cambridge glass, and didn't use the word "Cambridge" in the description. I also mention if a listing was a Buy It Now offering, as opposed to an auction style listing. I think it's important to distinguish between the two, as the price for an auctioned item reflects competitive bidding (or no competition, if it sells for the opening bid.) Here we go:

### Rose Point:

A rare #1702 8" hat vase, 5" tall and 8" wide, noted in excellent condition, sold at the listed price of \$249.99.



A set of seven Shrimp Cocktails with Liners, 3.75" x 3.75", liners 4" x 4", in good condition, listed for \$399.99, sold for an undisclosed best offer.

A honey dish, # 3500 Gadroon blank, 5 1/2 x 6 7/8 x 4" high, sold for a Buy It Now of \$149.99.



A 3900/52 quarter pound butter and cover, noted as rare, sold for \$138.49 with 20 bids. Overall measurements are 6 7/8 x 3 x 2 7/8"

A Crown Tuscan 4 toed, flared bowl, #3400/4, gold encrusted, 11 1/4" diameter, 4 3/8" height, was listed for \$64.00 and sold at an undisclosed best offer. Some wear was noted on the gold.



A definite "Incognito" listing; this Shelley Rose and Red Daisy large mustard and lid had an interesting piece with it; a Rose Point sterling mustard spoon. Many Rose Point collectors also add matching Wallace sterling flatware pieces that go with Cambridge pieces such as the punch ladle, pickle forks, butter knives, bonbon spoons, butter picks, small ladles, ice tons, sugar tongs, and mustard spoons. This happened to be a rare size in the mustard jar, but the prize piece was the mustard spoon at the Buy it Now price of \$29.99.



### Etches:

A 3400/38 gorgeous, beautiful ball pitcher with ice lip in cobalt blue; and etched Gloria, sold for \$595.00. It was noted as very rare!



A single Portia tall wine, #3126, gold encrusted, 6 1/2" tall x 3 1/8"; condition noted as excellent, sold for \$119.99.

A Light Emerald goblet, Etch #739, stem 3130, 8 1/2" tall, 8 ounce capacity, sold at the list price of \$95.00. It was listed as a wine but in actuality, is a goblet



A rectangular 4 compartment, 2 handled relish, #3500/113, 15 1/2 x 4", two handled, etched Elaine, was listed for \$100.00 and sold for a Best Offer of \$75.00. It was noted as rare.



A Rosalie etch #3035 stem in Heatherbloom; 6 ½” tall, in excellent condition, sold for a Buy it Now price of \$64.99. It was listed as a wine but is a tall sherbet.

A 3400/14 7” tall comport, etched Lorna, Gold Krystol, sold for US \$90.87 with one bid. Interesting side note: this piece was listed in and shipped from Australia. Shipping cost: ouch!



A 500/30 Honeycomb bowl, 9 ½” x 2 ¾” in Rubina, marked with triangle C, sold for \$95.95.



A 7” tall 32 ounce Royal Blue 3400/92 Decanter with ball stopper, sold at \$74.99.

Butterfly, #2, Crystal with a satin finish, 2 ¾” wide x 2” deep x ¾” tall, sold for \$48.78 with 4 bids.



**Statuesque line:**



A rare pair of crystal satin glass candlesticks with bobeches and prisms, 9 5/8” tall and 4 1/2” across the top, was listed at \$1550.00 and sold best offer accepted.



A Caprice Oil & Vinegar set, #104 consisting of two 4 ¼” tall and 3 ½” across cruetts with stoppers, and 6” oval tray, all pieces Moonlight Blue, sold for \$150.00. It was

listed as Cambridge Caprice Cruets with Stopper and Dish.

A champagne flute in Royal Blue #3011/3, 7 ¼” tall, excellent condition, sold for \$150.00 at the opening bid.



Mardi Gras round vase, 4 5/8” tall, 5 7/6” at its widest, weighing about 2 ¼ pounds, sold on the first bid at \$225.00.



A Crown Tuscan Seashell #SS40, more commonly referred to as the Flying Lady bowl, was listed sa \$259.99 and was sold at an undisclosed Best Offer.

A #3400/113 35 oz decanter with the Flying Geese silver decoration by Rockwell Silver Company was listed at \$74.99 and sold at an undisclosed Best Offer.



A beautiful hard to find Royal Blue ash tray #3011, 6 ½” tall sold at the first bid of \$150.00. The condition is excellent, no chips or cracks.

**Other Great Glass:**

A #96 ½ pound candy jar, 9” tall x 3 ¾” wide Egypt etch, and encrusted with unusual color, sold for \$70.99 with 7 bids



That’s it for now. I enjoy browsing eBay, but I might miss something interesting. If so, let me know. Until next time, happy Cambridge hunting!

*Happy New Year!*

## Membership Corner

### Member Spotlight: *Elaine Thompson*

I began collecting Cambridge glass in 2004 when I inherited glass from my parents. They were downsizing, and suddenly my siblings and I discovered boxes of glass in the attic.

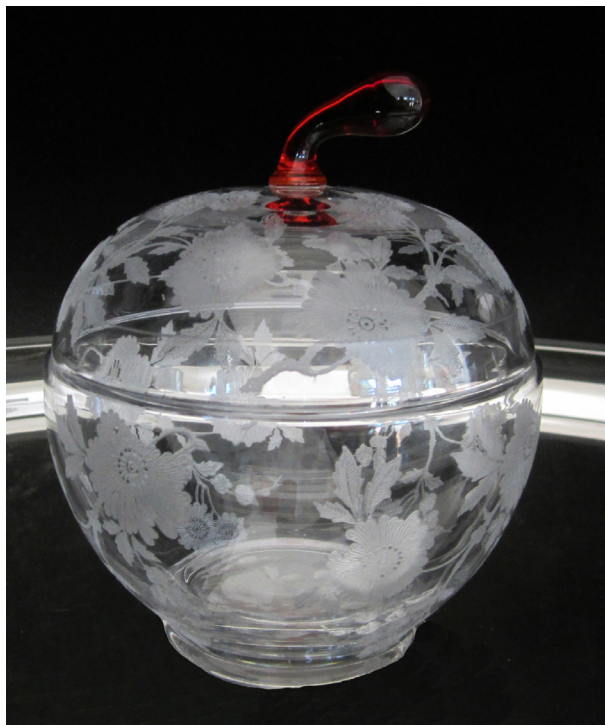
After a little research, I discovered the Elaine pattern and NCC and joined right away! Besides the Elaine pattern, I collect candlesticks, Near Cut Daisy, Arcadia, and Rock Crystal Engravings.

I grew up outside of Cambridge and my father, Blair Stewart, worked in the cutting department from 1936 – 39 and 1947 – 48. He cut many patterns but focused mainly on Lucia and Croesus. More information on his work at the glass plant is available in an article in the October, 2007 issue of the Crystal Ball.



I am a retired piano teacher. In addition to collecting Cambridge glass, I also enjoy traveling, reading, and baking.

### Recent Finds



Pristine 316 Candy Box, Carmen Stem, Blossom Time

### Volunteer Opportunity

We currently have a volunteer opportunity to help us with communications.

We could use help in several areas. Perhaps an easy task that can be done remotely is the sending of the monthly emails about the Zoom and Tell meetings. We could also use help with writing and distributing informational releases to other publications. As we improve our websites, we need someone to be looking for information that should be posted on our websites. Perhaps this could be a position for someone wanting to try a new experience. We'll help you as much as possible, and make it easy for you to do remotely.

If interested, please contact Freeman Moore for more information.

[president@cambridgeglass.org](mailto:president@cambridgeglass.org)

## NCC Events

\*\*\*\*\*

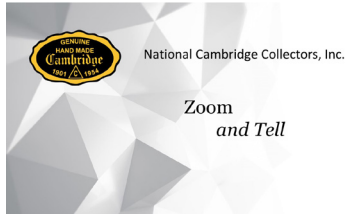
### March Meeting and Auction

March 15-16, 2024

\*\*\*\*\*

### 2024 NCC Convention

June 27-29, 2024



Contact [membership@cambridgeglass.org](mailto:membership@cambridgeglass.org) if you don't get the monthly email with the Zoom information.

January 9 Favorite Finds of 2023  
February 13 Comports & Compotes

## New Members

Taylor Kidd TX

*Help spread the benefits of being a  
"Friend of Cambridge"*

## CLASSIFIEDS

**For Sale:** Large Collections including Rose Point, Yellow Gloria, Adonis, 520, Crown Tuscan, Nudes, & more.

Inquire to Dan/Krista, 313-917-2887, [gecko697@flash.net](mailto:gecko697@flash.net)

### January 20-21, 2024

Cartersville Glass Show  
Cartersville Civic Center  
425 W. Main St.  
Cartersville, GA  
[doublepromotions@gmail.com](mailto:doublepromotions@gmail.com)

**Glass Shows**

### January 27-28, 2024

Collectors of Depression Glass-Jacksonville, Florida  
49th Antique and Depression Glass Show & Sale  
Fraternal Order of Police Building  
5530 Beach Blvd  
Jacksonville, FL  
<http://www.depressionglassclubjax.com/>  
[kwpepw@aol.com](mailto:kwpepw@aol.com)

### February 3-4, 2024

The South Florida Depression Glass Club's 50th  
Vintage American Glass and Pottery Show & Sale  
Tamarac Community Center  
8601 West Commercial Blvd  
Tamarac, FL 33321  
<https://sfdgc.com/>  
[mapiercefla@gmail.com](mailto:mapiercefla@gmail.com)

### February 10-11, 2024

Clearwater Elegant & Depression Glass Show & Sale  
Morningside Recreation Complex  
2400 Harn Blvd.  
Clearwater, FL 33764  
[gingerbreadantiques77@gmail.com](mailto:gingerbreadantiques77@gmail.com)

### February 16-18, 2024

The Houston Glass Show/Sale & Best Little Antique Show in TX  
Fort Bend County Fairgrounds  
Hwy 36 and Hwy 59  
Rosenberg, TX  
<https://maxmillerantiques.com/>  
[mmxglass@aol.com](mailto:mmxglass@aol.com)

### February 24, 2024

46th Annual Green River Glass Show & Sale  
Kent Commons  
525 4th Ave N  
Kent, WA  
<https://www.facebook.com/profile.php?id=100064927020624>  
[susanalbradley@outlook.com](mailto:susanalbradley@outlook.com)

### March 9-10, 2024

The 20-30-40 Glass Society of Illinois  
51st Annual Glass Show & Sale  
The Concord Plaza Midwest Conference Center  
401 West lake St.  
Northlake, IL 60164  
<http://20-30-40glassociety.org>

# DEALER DIRECTORY

Dealer Directory - \$24 for 12-months, size limited by box (see below). Includes listing on NCC website. Electronic submissions should be emailed to: [editor@cambridgeglass.org](mailto:editor@cambridgeglass.org)

## Advertising Rates:

1/8 page \$15      1/4 page \$20  
 1/2 page \$30      Full page \$50

Mailed submissions and all payments should go to PO Box 416, Cambridge, OH 43725. Deadline is 10th of preceding month. Ads must be paid in advance. Show listings are FREE; send info to PO Box or e-mail address 60 days before event.

<p style="text-align: center;"><b>Max Miller</b>  <b>Elegant American Glassware</b>  <a href="http://www.maxmillerantiques.com">www.maxmillerantiques.com</a></p> <p>The Market Place                  10910 Katy Freeway.      713-410-4780                  Houston TX 77043      <a href="mailto:mmxglass@aol.com">mmxglass@aol.com</a></p>	<p style="text-align: center;"><b>ISAACS ANTIQUES</b>                  (740) 826-4015</p> <p style="text-align: center;">↔ located in ↔  <b>Black Cat Vintage LLC.</b>  <b>637 Wheeling Ave.</b>  <b>Cambridge, OH 43725</b>  <b>(740) 995-8370</b></p>
<p style="text-align: center;"><b>Glen &amp; Carolyn Robinson</b>  <b>White Rose Antiques</b>                  Specializing in Depression Era Glassware</p> <p style="text-align: center;"><b>2454 McFarland Road</b>  <b>York, SC 29745</b></p> <p>803-684-5685  <a href="mailto:gandcrobinson@aol.com">gandcrobinson@aol.com</a>  <a href="http://whiteroseglassware.com">whiteroseglassware.com</a></p>	<p style="text-align: center;"><b>MARGARET LANE ANTIQUES</b></p> <p><b>2 E. Main St. New Concord, OH 43762</b>                  Lynn Welker      (740) 705-1099</p> <p>Cambridge Glass Matching Service                  Hours: Mon-Fri 10-12 AM, 1-5 PM                  or by appointment</p>
<p style="text-align: center;"><b>CRYSTALLINE COLORS</b>  <i>Cambridge • Fostoria • Elegant Glass</i>                  Booth and Showcases in the  <b>Medina Antique Mall</b>                  Medina, OH (I-71, exit 218)</p> <p style="text-align: center;">Lynne R. Franks    216-661-7382</p>	<div style="border: 1px solid black; padding: 5px;"> <p style="text-align: center; background-color: #4b0082; color: white; margin: 0;"><b>Connecting Buyers &amp; Sellers!</b></p> <p style="text-align: center; margin: 0;">Tell us what you are looking for and we help find it.</p> <p style="text-align: center; background-color: #4b0082; color: white; margin: 0;"><b>CAMBRIDGE GLASS.US</b></p> <p style="text-align: center; margin: 0;">P. Snyder 740-601-6018</p> <p style="text-align: center; background-color: #4b0082; color: white; margin: 0;"><b>E-Mail and Find Your Glass!</b></p> <p style="text-align: center; margin: 0;"><a href="mailto:psnyder@cambridgeglass.us">psnyder@cambridgeglass.us</a></p> <p style="text-align: center; margin: 0;"><a href="http://www.cambridgeglass.us">www.cambridgeglass.us</a></p> <p style="font-size: small; margin: 0;">When you are searching for Cambridge glass, email your request and it is emailed to all members and dealers.                  P. Snyder, 1500 Edgewood Dr., Circleville, Ohio 43113</p> </div>
<p style="text-align: center;"><b>CRYSTAL LADY</b>                  1817 Vinton St.      Omaha, NE 68108  <b>Bill and Joann Hagerty</b>  <b>Marcie Hagerty Bergquist</b>                  402-699-0422</p> <p>Specializing in Elegant Glass &amp; Collectibles  <a href="http://www.crystalladyantiques.com">www.crystalladyantiques.com</a></p>	<div style="border: 2px solid red; padding: 10px; text-align: center;"> <p style="font-size: large; margin: 0;"><b>Our House Antiques</b></p> <p style="margin: 0;">Linda and David Adams                  Las Vegas, Nevada                  702-302-8282</p> <p style="font-size: small; margin: 0;">Shows and Mail Order only                  email: <a href="mailto:David@OurHouseAntiques.com">David@OurHouseAntiques.com</a>  <a href="http://www.OurHouseAntiques.com">www.OurHouseAntiques.com</a></p> </div>

National Cambridge Collectors, Inc.  
PO Box 416  
Cambridge OH 43725  
email: editor@cambridgeglass.org  
website: www.cambridgeglass.org



***The National Museum  
of Cambridge Glass***  
National Cambridge Collectors, Inc.

***Open April thru October  
only***

