



Cambridge Crystal Ball

Published by the National Cambridge Collectors, Inc. as a resource which informs, invites and inspires people to encourage the continued preservation of the glass produced by the Cambridge Glass Company of Cambridge, Ohio for future generations.

Issue No. 552

ISSN 2474-5987

October 2021

Let's Have an Auction --- *Safely!*

March 14, 2020 was the original date for our auction, which has been rescheduled to October 9, 2021. Obviously, much has changed from that date with respect to protecting one's health from the coronavirus. Most of the country was shut down for several months in early spring 2020. Our museum was able to open June 10, 2020, instead of April 1. Safety protocols were established and put in place to protect the museum staff and visitors.

We must ensure a safe environment for conducting our auction for your benefit. Washing your hands often, using hand sanitizer, avoiding shared contact and wearing masks are all tasks we have been expected to do these past 18 months.

The room we use at the Pritchard-Laughlin Civic Center is large enough that auction attendees should be able to maintain their social distance from others by sitting six feet apart.

Your Board of Directors **approved the requirement to wear a mask when you are indoors during the auction.** During the auction preview, please be conscious of the space needs of others and don't crowd.

In the past, auction runners would bring your items to you after your successful bid. This year, to minimize interaction, items will be placed on a table for you to pick up, avoiding crowds.

There will be hand sanitizer and masks available if you need them.

If you are not comfortable with attending the auction in-person, then act quickly to get your absentee bid submitted to the NCC Auction Managers before Thursday October 7. Details about submitting absentee bids are on the Auction Information page 8 of the January 2021 Crystal Ball.

Theo's Restaurant will be onsite Saturday morning during registration to take lunch orders.

Be safe, and enjoy the auction.



What's Inside

Let's Have an Auction --- Safely!	1
President's Message	3
The Fall Season Begins at the Museum!	4
The "Other" Square.....	8
Zoom & Tell: Royal Blue	10
Using Your IRA for Charitable Giving.....	11
A Cambridge Caprice Look-A-Like	12
eBay Report	14
New Members.....	16

National Cambridge Collectors, Inc.

PO Box 416 Cambridge, OH 43725-0416

Board of Directors

	2022	
Julie Buffenbarger	David Rankin	Frank Wollenhaupt
	2023	
Nancy Misel	Lindy Thaxton	Lynn Welker
	2024	
Cindy Arent	Larry Everett	Mike Strebler
	2025	
Ken Filippini	Freeman Moore	Christine Smith

Officers

President	Freeman Moore
Vice-President	Ken Filippini
Secretary	Nancy Misel
Treasurer	Mike Strebler
Sergeant-at-Arms	Larry Everett

Committees

Endowment	Doug Ingraham
Finance	Mike Strebler
Property	Larry Everett
Strategic Planning	Mike Strebler

Member Services

Vice President

Member Relations
Convention
Member Social Media
Glass Dash
Glass Show
Study Groups
Webmaster

Freeman Moore
Freeman Moore, Membership Database
Larry & Susan Everett
David Ray
Larry Everett & Frank Wollenhaupt
David Ray, Mike Strebler, Jack Thompson
Jeannie Moore, Study Group Coordinator
David Adams

Development

Vice President

Campaigns

Events

Projects
Publicity

Julie Buffenbarger
Ken & Jane Filippini, Annual Fund Directors
Larry Everett, Director of the Heritage Society
Bev & Will Acord,
Lynn Welker, Auction Managers
Susan Everett & Frank Wollenhaupt, Jewelry
Convention: Jonathan Fuhrman

Education

Vice President

Crystal Ball
Digital Archivist
Publications
Media Productions
Research

Larry Everett (Acting)
Freeman Moore, Editor
Dave Rankin
Larry Everett, Director of Publications
Dave Rankin, Director of Media Productions
Dave Rankin, Director

Museum

Vice President

Public Operations
Facilities & Grounds

Inventory Management
Collections
Museum Gift Shop

Archivist
Museum Social Media
Community Relations

Cindy Arent
Lindy Thaxton, Director of Public Operations
Cindy Arent,
Joe Miller,
Lindy Thaxton
Lindy Thaxton, Director of Inventory Management
Lynn Welker, Director of Collections
Cindy Arent, Gift Shop Manager
Lynn Welker, Gift Shop Manager
Mark Nye, Director of Archives
Cindy Arent, Director
Cindy Arent

Administration

Vice President

Accounting & Finance

Larry Everett
Lisa Neilson, Office Manager

MEMBERSHIP QUESTIONS?

Please send address changes to:
Membership - NCC
PO Box 416
Cambridge, OH 43725-0416
or by e-mail to:
membership@cambridgeglass.org



CONTACT US

NCC Business Manager
Phone: 740 432-4245

businessmanager@cambridgeglass.org



Freeman Moore, President

e-mail: president@cambridgeglass.org

Nancy Misel, Secretary

e-mail: secretary@cambridgeglass.org

Heritage Society

Ensuring the preservation mission of the NCC through planned giving and estate bequests.

Members of The Heritage Society are those who have included the NCC in their wills or estate plans, thus providing the organization with a secure future.

The mission of The Heritage Society is to foster smart estate planning and to assure that NCC is not forgotten as an important beneficiary. Any pledge is meaningful and appreciated.

All Cambridge collectors - both current and future - will benefit from, and be grateful for your support.

Let us know how we can help with your future plans.

Museum:

National Museum of Cambridge Glass



Like us on Facebook

Member: Cambridge Glass/National Cambridge Collectors

NCC Website: www.CambridgeGlass.org

NCC Museum Website: www.cambridgeglassmuseum.org

Miami Valley Study Group Website: www.mvsg.org



PRESIDENT’S MESSAGE

October Happenings

Normally, the paper edition of the Crystal Ball is mailed on the last day of the month. This issue should be mailed Tuesday September 28 and the email version will be sent on October 1. We want to make sure everyone gets the latest details about our auction that will be held on Saturday October 9.

The article on the front page reinforces our need to have an auction environment that addresses the health concerns of our members. Lynn Welker has checked with everyone who had submitted an absentee bid for the March 2020 date. Especially for our members outside of traveling distance to Ohio, you are encouraged to submit absentee bids, but make sure the information is received by Thursday October 7. I have no idea how many people will be attending in person, but Jeannie and I will be at the auction, wearing our masks.

Friday evening, October 8 at 7:30, we will have the fall membership meeting. It will be held at the Prichard-Laughlin Civic Center and assuming everything works, it will also be on Zoom.

Fall Membership Meeting
October 8, 2021 7:30 pm
Zoom meeting ID: 883 6479 9640
Zoom meeting passcode: 505549

Agenda:
Reports:
 Secretary
 Treasurer
 Operational Vice-Presidents
 Administration
 Development
 Education
 Member Services
 Museum

Old Business: none
New Business:
Adjourn

This will be a shorter meeting that our annual meeting held in June. Hopefully the Zoom connection works well enough for this meeting and the auction preview that follows.

If you are in the “over 70” age bracket, you should read Doug Ingraham’s article about making charitable contributions from your IRA. This could be an simple donation to NCC, or if done in the spring, used as your Annual Fund contribution.

The monthly Zoom & Tell session are continuing on the third Thursday of the month. David Ray has provided a good summary for the August Royal Blue session. I have enjoyed seeing some members who live far away (such as San Antonio, San Diego, Los Angeles, etc.) participating on Zoom. If you don’t get the email reminder, you can find the details on the home page of the NCC website.

A couple of years ago, a member from Arizona provided suggestions and inputs towards two articles for the Crystal Ball. What topic suggestions do you have for future articles?

What’s coming?

Be safe. Be careful. Take the correct precautions.

We want to involve you as much as possible, and we can always use more volunteers.

What’s on your Cambridge “wish list” for this year and beyond, and how can we help?

Sincerely,

Freeman Moore
president@cambridgeglass.org

The Fall Season Begins at the Museum!

By Cindy Arent

Thank you to all of you for your support! Whether you have volunteered, donated, purchased a piece from the Museum gift shop, made positive comments or sent our volunteers and docents good thoughts; you are appreciated.

We still have one donation in transit to Cambridge, Ohio. If you remember, Bill and Suzanne Chamberlain picked up a donation in Phoenix, Arizona. David and Linda Adams (Las Vegas) recently picked up the donation in Phoenix on their way to do two glass shows in Texas. The boxes have been passed to Freeman and Jeannie Moore and are waiting patiently for the next part of their journey. If you happen to be driving through the Dallas area and are heading East, please contact us if you are willing to transport.

Boxes of donated glass have also arrived from Dean Gattone and Dana Stephens. Tarzan Deel arrived at the museum for a brief visit with donations of glass AND chocolate to keep us going throughout the day as we lead visitors on tours. Thank you!



Tarzan Deel arrived at the Museum with donations of glassware and chocolate. Thank you!



David Adams passes several boxes of a donation from Phoenix, Arizona to Freeman Moore. The glassware is slowly making its way across the country. Thank you!

Cambridge Mayor Tom Orr sometimes parks behind the museum. One day I happened to see him and invited Tom inside to see the progress being made at the yellow house that we use for auction glass and museum storage. Mayor Orr gave it a thumbs up. In addition, the City of Cambridge has been working in Founder's Cemetery, directly behind the Museum. We appreciate their efforts!

Hugh McManus made the first piece of Cambridge Glass in 1902, assisted by his son, Walter. In late August, members of his extended family gathered in Cambridge for a reunion. A tour of the National Museum of Cambridge Glass was planned as part of their day. It was

wonderful to visit with a group still interested in their family history many generations after Hugh McManus made the first piece of Cambridge Glass.

Since last month's Crystal Ball, we have had many interested visitors. Three ladies from Texas even sent flowers to the Museum the following day to express their appreciation to Lindy Thaxton and Anna Marie Pavlov for staying late so they could shop in the gift shop. We have also hosted motorcoach groups from Bloomington, IN and North Central Ohio.

Grant Update: We have received our grant money from the Cambridge/Guernsey County Visitors & Convention Bureau. We can't thank them enough for their grant support throughout the years. It has helped develop our museum brand by attending seminars with national leaders in the industry each year.

The grants submitted to the Cambridge Kiwanis Foundation and Ohio Humanites/SHARP are still in progress. Any new information will be reported in the November/December issue of the Crystal Ball.

The National Museum of Cambridge Glass will close for the regular season on October 31. The holiday hours will be: Friday and Saturday (Noon – 4 p.m.) November 5th through December 18th.

We hope to see you at the October Auction! ■



A surprise tour group that scheduled just the day before, arrived at the Museum at 8:30 a.m. It was a quick visit, but they enjoyed every minute. Museum volunteer Diana McMahon is shown leading one of the groups through the glass display area.



The McManus family recently visited the Museum. They are descendants of Hugh McManus who made the first piece of Cambridge Glass in May, 1902.



A selfie was taken and shared by our new friends from Texas while enjoying the Museum. These ladies were all having fun!

Anna Marie Pavlov and Lindy Thaxton are in the back row of the photo, left and right respectively.



Cambridge Mayor Tom Orr (center) stopped by to see the work in the basement of the yellow house. He gave a thumbs up!



Promoting the Museum at Salt Fork State Park Lodge were: Cindy Arent, Julie Davey and Lindy Thaxton. The Ohio Department of Natural Resources was hosting a Women's Outdoor Getaway Weekend and we were invited by the VCB to set up.



Holiday Open House
November 26 & 27
Noon-4 • Free Admission

Gift Shop includes authentic Cambridge Glass, Jewelry and Ornaments made from Cambridge Glass, gift boxes with Cambridge Glass and other gifts for the holidays. Museum guides dressed in Victorian attire!

2021 HOLIDAY HOURS:
 Open Fridays and Saturdays
 November 5 through December 18; Noon – 4:00 p.m.
 General Admission \$5, AAA/Seniors \$4 and children under 12 free

National Museum of Cambridge Glass
 136 S. 9th Street, Downtown Cambridge, Ohio
 740-432-4245 | www.CambridgeGlassMuseum.org

This ad is made possible through the support of a grant from the Cambridge/Guernsey County VCB. www.visitguernseycounty.com • 800-933-5480 • 627 Wheeling Ave., Cambridge, OH 43725

The new 2021 Museum Holiday Season ad was made possible by a Grant from the Cambridge/Guernsey County Visitors & Convention Bureau.



Cambridge Glass ornaments will be available in the Museum Gift Shop again this year. We have also added decorated stemware as it was popular during the Christmas Candlelight Walk in downtown Cambridge last year. Thank you to volunteer Sally Slattery for decorating the stemware.

*Call for availability
 740-432-4245*



The "other" Square

by Stu Sandler

I have been enjoying the monthly Zoom and Tell sessions. I have been able to share some of my items that correspond to the monthly color theme. While I collect a variety of Cambridge items, I have a particular fondness for items with what I call the square base, several of which are pictured here. While most of what I have are vases, smoker's items and S&P sets from the 3400 line, there are other examples in the collection including a cruet, a sugar shaker and creamer set and the cheese comport from a cracker and cheese set.

I recently found out about the 3025 stemware line, and will be trying to find an example to use as my stem at the next Convention. What other items with the square base should I include in my collection?

Thanks,
Stu Sandler fldocstu@aol.com



1299 11 in Ftd Vase Gloria



1303 7 in Ftd Vase Enamel
Edge Lorna



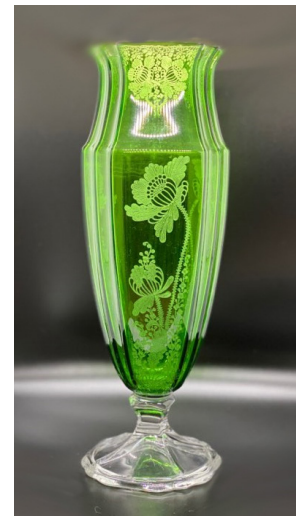
1300 8 in Ftd Vase
Royal Blue
Japanica



1300 8 in Ftd Vase
Light Emerald
Gloria



1284 10 in Ftd Vase
Apple Blossom



1298 13 in Ftd Vase
Gloria



1312 Ftd Cigarette Box and Cover



1311 4 in Ftd Ash Tray



3400/76 Shaker with black cover Glass Top and two 3400/77 Shakers



3400/40 Sugar Shaker and 3400/39 Tall Cream



3025 stemware



3400/7 Comport for Cheese and Cracker

Zoom & Tell: Royal Blue

by David Ray



Forty Cambridge glass enthusiasts gathered for the August Zoom & Tell to share and learn about one of the most popular colors among Cambridge glass collectors, Royal Blue. Royal Blue was introduced in 1931 under the tenure of chemist, Henry Helmers. Les Hansen opened the meeting with a brief discussion about the production of Royal Blue glassware. Les noted that Royal Blue was one of the easiest colors to consistently produce. In an 820-pound batch, only 21 oz of cobalt oxide and 12 oz of manganese were required to provide the rich and vibrant color collectors enjoy. Royal Blue was produced until the early 1940's and never returned into production.



Given its rich dark color, Royal Blue provided a wonderful background for Japonica, silver overlays and gold encrusted etchings. After Les's introduction, several participants eagerly shared numerous examples from their collection's. Many beautiful and rare items were shared during the August program. After the program, a guest commented on the large number of Royal Blue gold encrusted chintz #2 items shared during the Zoom & Tell program. Of all the etchings used to decorate Royal Blue glassware, Chintz #2 seems to be the most plentiful.



The themes for the upcoming Zoom programs are as follows:

- September: Larry Everett will discuss Cambridge Colors
- October: Ebony & Ebon
- November: Satin Decorated Cambridge Glass
- December: Amethyst
- January: Heatherbloom



If you have never participated in a Zoom & Tell program, it is not too late. Participation is easy. The programs are held the third Thursday at 8:00 PM EST. Provided you have access to the internet, you can enjoy a Zoom & Tell program from your computer, tablet or smart phone. About 30 minutes prior to the start of the meeting, participants begin to join the meeting in order to say hello to fellow members and share light conversation. If you would like to view the Royal Blue Zoom & Tell program, you can send an email to membership@cambridgeglass.org requesting the August Zoom & Tell link. ■



Did You Know?

A Little Known Way To Use Your IRA For Charitable Giving to NCC

by Doug Ingraham and Freeman Moore

(Updated from Crystal Ball November 2017)

How can you use your IRA to give charitable gifts to NCC while obtaining tax advantages for yourself? It's simple if you are over age 70½ and have an IRA; you can request your plan administrator to send money directly to NCC without being subject to income taxes on the distribution. The money you send to NCC can be counted as part of any Required Minimum Distributions (RMD) that you need to take for the year.

Say what? Really? Yes.

HERE ARE THE DETAILS:

- ✓ You must be age 70½ or older at the time of the gift.
- ✓ You transfer money directly from your IRA, up to \$100,000 annually. If you and your spouse file jointly, you each can transfer up to \$100,000 annually tax free.
- ✓ This opportunity applies only to IRAs and not to other types of retirement plans.
- ✓ The plan administrator transfers the funds outright to one or more qualified charities.
- ✓ You may specify it as a gift to NCC, or have it considered as your Annual Fund contribution.

FREQUENTLY ASKED QUESTIONS:

Q. I thought the age limit for required minimum distributions increased to age 72?

A. While the SECURE Act of 2019 did change the age requirement for RMDs, it kept age 70½ as the starting age when a qualified charitable distribution can be made.

Q. I have several retirement accounts, some are pensions and some are IRAs. Does it matter which retirement account I use?

A. Yes. Direct rollovers to NCC can only be made from an IRA. Under certain circumstances, however, you may be able to roll assets from a pension, profit sharing, 401(k) or 403(b) plan into an IRA and then make the transfer from the IRA directly to NCC. To determine if a rollover to an IRA is available for your plan, speak with your plan administrator, tax advisor and/or financial advisor.

Q. I have more than one IRA; can I take my total required minimum distribution or IRA Charitable Rollover from just one account?

A. Per the IRS website, "An IRA owner must calculate the RMD separately for each IRA that he or she owns, but can withdraw the total amount from one or more of the IRAs."

Q. Does my gift count as part of my required minimum distribution (RMD) under the law?

A. Yes, absolutely. If you have not yet taken your required minimum distribution, the IRA charitable rollover gift can satisfy all or part of that requirement. Contact your IRA plan administrator to complete the gift.

Q. Do I need to give my entire RMD to be eligible for the tax benefits?

A. No. You can give any amount under this provision, as long as the amount is \$100,000 or less in any given year.

Q. Can't I make the donation and get the tax advantages?

A. No. It must be made as a direct transfer made by the plan administrator of your IRA directly to NCC.

Q. What is the advantage of a direct transfer versus withdrawing the money and making a donation?

A. A direct transfer is not added to your adjusted gross income (AGI) like a withdrawal would be. A withdrawal would be added to your taxable income. By keeping it off of your AGI, it could lower taxes and possibly reduce the Medicare high income surcharge.

Q. Where can I get more information?

A. Please consult with your tax advisor and financial advisor. You can also review the rules in IRS publication 590-B, available at www.irs.gov. Look for information on "qualified charitable distributions" in the document.

Q. If the plan administrator needs information on NCC, who do I contact?

A. Please send an Email to the NCC Endowment Committee at endowment@cambridgeglass.org.

The information in this article is not intended as legal or tax advice. For such advice, please consult your attorney or tax advisor.

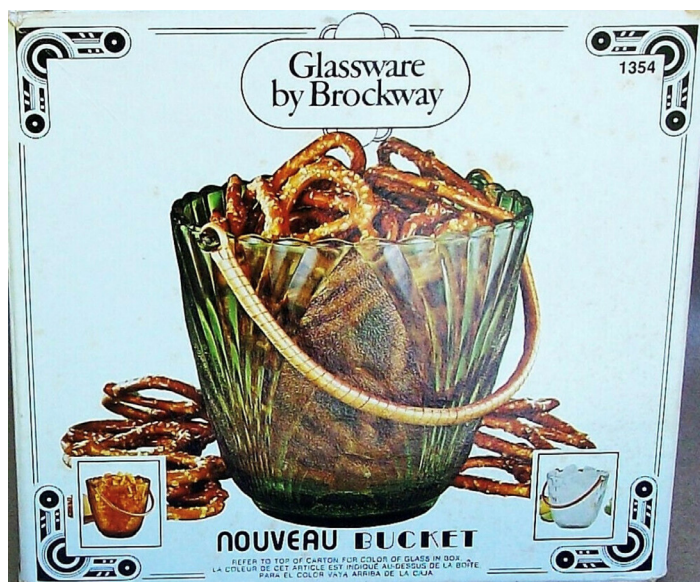
A Cambridge Caprice Look-A-Like

By Gwenell Pierce

My husband and I have been collecting Cambridge Caprice for over 40 years and have thoroughly enjoyed entertaining with our Caprice over the past several years. We always enjoy going to shows and shopping for unique glassware items. Recently, we have been seeing quite a few ice buckets that resemble Cambridge Caprice Crystal Alpine (with frosted-style panels) and is being labeled and sold as Cambridge Caprice. Clearly this ice bucket is not Cambridge Caprice!



This Ice Bucket is most confusing, but not to a Cambridge Caprice person. Caprice's Ice Bucket has 4 feet whereas this one has none. The Caprice Ice Bucket has a 5½" opening while this one is 6½" wide, making it closer to the size of the Caprice Cracker Jar. Both Caprice and this one have a similar height (5¾" and 6" respectively) but are slightly different. Caprice has near perpendicular sides while this one has very well defined slanted or tapered sides. Though both ice buckets have clear bottoms, this one clearly has a heavy ring around the base edge where Caprice's pattern begins at the 4-feet and curves upward towards the top. This different one has been found in amber, dull green, and crystal, all of which have rough textured panels with an assortment of handles.



Thus, my search for information related to this unknown ice bucket began. I came across a picture of a package for Glassware by Brockway. The package stated the Brockway Glass Company creative designers responded to American Resurgence of the Art Deco period and developed a line of glassware to reflect Art Deco of the early 1900's with a striking balance between old and new. They developed several patterns, one of which was Nouveau.

Now, who is Brockway? Brockway Glass Company Inc. acquired the glass tableware division and the Clarksburg, West Virginia plant from Continental Can Company (which had acquired it from Hazel-Atlas Glass) in 1972. Though Brockway continued to sell the Hazelware Line of products until those lines ended production, the plant was used to produce many other designs Brockway developed. The Clarksburg plant predominately produced glass tableware until it was sold to Anchor Hocking Corp. in 1979 which was later taken over by Newell Corp. in 1987, who permanently closed the plant later that year. The Clarksburg plant was finally torn down in 2001.

Nouveau was one of these new designs by Brockway Glass which was produced at the Clarksburg plant. Nouveau has been described as "Arch Design with textured or frosted (stippled) panes". The stippled panels resemble Cambridge Alpine, though I feel Caprice Alpine has a smoother texture.

November issue of the National Depression Glass Association newsletter “News & Views”.

This has been an interesting process.

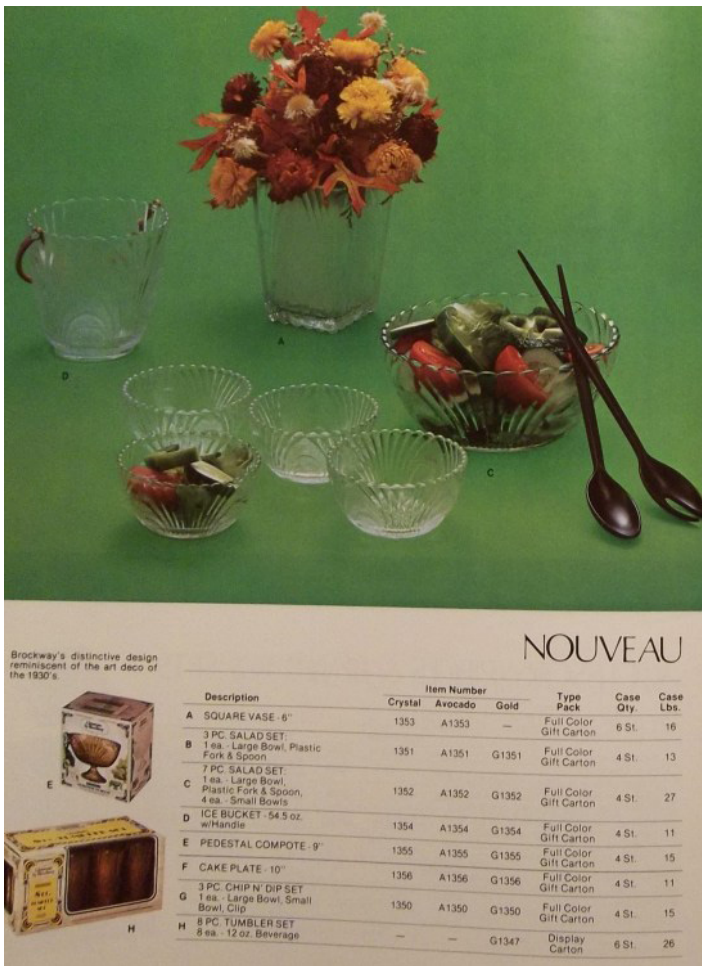
- I discovered that Cambridge Caprice was a popular pattern and other glass producers wanted to take advantage of that popularity.
- Also, glass companies were frequently bought, sold, traded, and taken over.
- Patterns were copied. Nouveau was produced about 20 years after Cambridge closed, and Cambridge’s Alpine production ceased several years prior to finally closing.
- Nouveau appears to have been produced for only 2 (possibly 3) years in total while Caprice was produced for 21 years (1937-1958).
- Finally, during this search, I came across many glass items that resemble Cambridge Caprice that were produced by a variety of companies well before and after Caprice.

The “Caprice” pattern continues.

Photos and information came from:

- hazelwareglass.wordpress.com
- www.Facebook.com
- www.Esty.com
- magwv.pastperfectonline.com
- www.Ebay.com
- www.replacements.com

“Caprice” compiled by Mark Nye, National Cambridge Collectors 1994



Brockway Catalog 1978

While looking for information, I also discovered Brockway produced 7 different Nouveau pieces in Gold, Avocado, and Crystal with one also available in White. Brockway’s 1976 catalog stated that Nouveau was “new”. The 1978 catalog’s lists showed several different combinations as:

- #1347 8-piece 12oz Tumbler Set (available only in Gold)
- #1350 3-piece Chip-N'-Dip Set (large bowl, small bowl and metal clip)
- #1351 3-piece Salad Set (large bowl plus a plastic fork and plastic spoon)
- #1352 7-piece Salad Set (large bowl, 4 small bowls plus plastic fork and plastic spoon)
- #1353 6” Square Vase (also available in White / not available in Gold)
- #1354 54.5 oz Ice Bucket with handle
- #1355 9” Pedestal Compote
- #1356 10” Pedestal Cake Plate

A longer version of this article with more information about items in the Nouveau line, appears in the October/



Welcome to the eBay Report, featuring Cambridge glass items that sold on eBay circa mid-August to mid-September 2021. Selling prices are rounded to the nearest dollar. If no color is mentioned, assume that the piece or part of it being discussed is crystal. If I refer to an auction as "incognito," that means that the seller did not know he or she was offering Cambridge glass, and didn't list the item in one of the Cambridge glass categories. I am also trying to make sure I mention if a listing was a Buy It Now offering, as opposed to an auction style listing. I think it's important to distinguish between the two, as the price for an auctioned item reflects competitive bidding (or no competition, if it sells for the opening bid.) Here we go:

Rose Point

A #P.427 10 inch bowl with Wallace sterling Rose Point pierced foot sold for only \$110, likely due to the use marks on the inside of the bowl. Others with no damage have sold higher.



A #3400/152 76 ounce Doulton jug with gold encrustation sold for \$229.



A #1066 footed ivy ball vase was offered for \$250, but sold for an undisclosed Best Offer.

A #P.420 18" buffet plate/punch bowl liner sold for the opening bid of \$275. Minor surface wear was noted. Sadly, the shipping quote to my zip code was a shockingly high number, but given the charges for "dimensional" shipping now, the number was probably accurate.

A pair of #P.575 cornucopia vases sold for a surprising \$470 Buy It Now.



Statuesque (Nude Stem) and Related Items

Oh my gosh – was that really a brandy with optic bowl in Heatherbloom that sold for \$90 Buy It Now??

An ivy ball with Royal Blue top sold for the opening bid of \$195.



An ashtray with Royal Blue top sold for the opening bid of \$225. Another sold several weeks prior for about half that price, \$108.50, with only two bidders. However, when you

look at the photographs, the stem and foot appeared to be sun-colored.



A brandy with Moonlight Blue bowl was offered for \$276, but sold for an undisclosed Best Offer.

A covered cigarette box with Carmen top sold for the opening bid of \$345.



Gold, Silver and Enamel Decorations

A #3400/4 4-toed bowl in Amber with gold encrusted Wildflower etching was offered for \$40 in a semi-incognito offering. It closed with no bidders, but was quickly relisted and sold.



A #3797/28 Square 13-1/2 inch plate in Ebon (satinized black) with the D/1 Birds gold decoration sold for the \$65 opening bid.

A Wetherford #146 stemmed covered sweetmeat or jelly comport in PeachBlo with the Egypt band etching covered in gold sold for \$70.

A #361 10 inch center handled tray in Azurite with a beautiful gold plus black enamel decoration was offered for \$139, and sold for an undisclosed Best Offer.



A round plate etched Portia with a Wallace sterling silver applied edge that featured a motif of fruit (apples, grapes, etc.) in heavy relief sold for \$139. Funny how putting a sterling edge on a prosaic luncheon plate can raise its value so significantly.

A #3900/116 80 ounce ball jug with Rockwell silver deposit of geese and pine trees sold for \$205.



A set of twelve large 11 inch round black "chargers" with silver overlay Geisha decoration were offered for \$1,800 and sold for an undisclosed Best Offer. One is shown in Colors in Cambridge, First Edition, in the photo that shows a selection of Cambridge glass in Ebony.



Etched Tableware & Stemware

A #110 4-pint jug etched Marjorie sold for a mere \$40 Buy It Now, likely due to a deep scratch on the inside near the handle. Speaking of Marjorie, a set of 4 #7606 1-1/2 ounce whiskeys sold for \$49.



A #326 12 inch 5-piece handled relish set in PeachBlo with Rosalie etching sold for \$80 Buy It Now. It was nice to see this set complete.



A set of 4 #3400/55 handled cream soups in Light Emerald Green, etched Apple Blossom, were slurped up for \$80.

Speaking of green Apple Blossom, a #3400/38 80 ounce ball jug and 5 #3400/38 tumblers sold for \$189, listed as “Cambridge?” in the “Other Depression Glassware” category.

Miscellaneous

A Wetherford #140 5-1/2 inch 3-toed candy box in Amber sold for a surprising \$71 in an incognito listing.



A honeycomb optic stemmed comport in Rubina with exemplary range of color sold for \$76.



A #38 Everglade 11 inch vase in Willow Blue was offered for \$185 but sold for an undisclosed Best Offer.



A #680 compact with a pair of #682 colognes in Ivory were offered for \$185 but sold for an undisclosed Best Offer. The compact was in good condition, but the daubers on both cologne bottles were broken off.

A vanity set in PeachBlo consisting of a #581 puff box and two #198 cologne bottles with intact daubers atop a #660 vanity tray sold for \$330 Buy It Now.

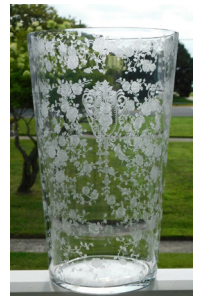
A Swan punch bowl with 9 matching swan punch cups sold for the opening bid of \$350.

A #1336 18-1/2 inch vase etched Diane sold for \$700 on a Buy It Now.



Correction

In my September report, I said, “A 12 inch flip vase sold for \$450 Buy It Now. The same vase, offered by the same seller, sold for \$500 back in May. The 8 inch size is listed as a #797; what number would this one be?” A reader responds: “The number for the 12 inch vase is 799; the 10 inch is 798. Also, the vase that sold in May had the Rose Point etching applied like the example shown in the Rose Point book. The second vase had the pattern applied in the manner shown on the 13 inch #279 vase in the same book.” There is nothing like a specialist collector to help split the hairs on these things. THANK YOU.



Also in my September report, I mentioned a Jenny Lind candy base in Rubina. My doubt about this item was well-placed. Two members contacted me to say that this is a later reproduction, made from the original mold -- more likely by Summit, but possibly Mosser. Whichever it was, I have to hand it to them – the color was, at least to me, indistinguishable from the 1920s pieces. Apparently this is a big problem with the Mt. Vernon dolphin candlesticks in particular, but less so with pieces not originally made in Rubina, such as the swans.

In the September issue, I said, “After reading the August issue of the Crystal Ball, and the report on the Zoom & Tell featuring Willow Blue and Moonlight Blue, I learned that the Everglade line was made in both colors. I did not realize that! Now I need to go back and look at the 4 pieces of Everglade I reported on, and see if I can tell which color (or colors) they are.” I now believe that all four auctions I reported on featured pieces of Everglade in Moonlight Blue.

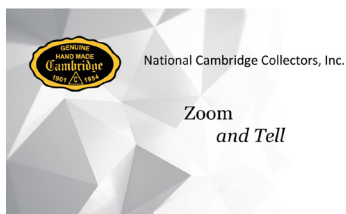
That’s it for now. If you see any interesting Cambridge glass on eBay that you think I should be watching or reporting on, or if you have any other input, feel free to contact me at LAGlass@pacbell.net. I am well aware that I don’t catch every interesting listing, especially those in a category other than Cambridge. Until next time, happy Cambridge hunting!

NCC Events

**Benefit Auction - rescheduled
Saturday October 9, 2021**

**2022 NCC Auction
Saturday March 19, 2022**

**2022 NCC Convention
June 23-25, 2022**



Contact membership@cambridgeglass.org if you don't get the monthly email with the Zoom information.

October	Black: Ebony and Ebon
November	Frosted/Satin/Alpine
December	Amethyst

Recent Finds



Caprice #106 Mayo Set with silver on blue decoration

October 2-3, 2021

Front Range Glass Show
The Ranch Event Complex: McKee Exhibit Hall
Loveland, CO
frontrangeglassshow@gmail.com

October 6-9, 2021

22nd Annual Vaseline Glass Collectors Convention
details at <https://www.vaselineglass.org>
Pittsburgh, PA

October 16-17, 2021

Milwaukee 43rd Annual Vintage Glass Show & Sale
Knights of Columbus Hall
732 Badger Avenue
South Milwaukee, WI 53172
degswisconsin@gmail.com

October 22-23, 2021

Valley Glasshoppers Fall 2021 Glass Show & Sale
1309 Opequon Ave
Winchester, VA 22601
valleyglasshoppers@yahoo.com

October 30-31, 2021

Peach State Depression Glass Club
44th Vintage and Collectible Glass Show
Cobb County Civic Center
Marietta, GA 30060
<http://www.psdgc.com/show.htm>

November 6-7, 2021

Michigan Depression Glass Society
48th Annual Depression Glass Show & Sale
Ford Community & Performing Arts Center
15801 Michigan Ave
Dearborn, MI 48126
<http://www.Facebook.com/MIDepressionGlass>



NCC welcomes the following new members

Ryan Carey	KS
Calvin Schultz	NY
Susan Schultz	NY
Richard Walton, Jr	PA

Recruit
and
Retain

Give this page to a friend



The National Cambridge Collectors
P.O. Box 416 ~ Cambridge, Ohio 43725

“FRIENDS OF CAMBRIDGE” MEMBERSHIP

The National Cambridge Collectors, Inc. (NCC) is a non-profit organization dedicated to the education and preservation of the great work of the Cambridge Glass Company. Founded in 1973, we depend on the financial support of our members, who we call **Friends of Cambridge**, for the majority of our operating budget. Won't you consider becoming a Friend of Cambridge? You can also complete this online at: <http://cambridgeglass.org/online/>

Friend #1 _____

Friend #2 _____

Friend #3 _____

(continue on reverse if needed - indicate any children and their year of birth, only those 18 and older residing in your household may vote)

Address _____

City/State/Zip _____

Email Address (required) _____

Phone Number _____

Crystal Ball newsletter delivery: ___ email (color) ___ paper (black & white)

Glass collecting interest: _____

New Member? (Y/N) ___ or Renewal? ___ If renewal, Member #s _____

Levels of Membership

Patron \$ 35

Century Level	\$ 100	Mardi Gras Level	\$ 200
Japonica Level	\$ 500	President's Circle	\$ 1,000

All members receive the Crystal Ball, free Museum admission and 10% off any book/DVD purchases, President's Circle includes Convention registration for two members in the household and one free copy of any new NCC publication.

All memberships are renewed annually via The Annual Fund mailing in late March/early April. All Annual Fund gift recognition levels are per household and include membership for everyone within the household 18 and older. Each household will receive a subscription to the Crystal Ball newsletter, unlimited admissions to the museum, and rights to vote in elections for the Board of Directors and discounts on NCC books. NCC is a 501(c)(3) organization and Annual Fund gifts are allowed as a tax deduction under Section 170 of the Internal Revenue Code. Contact your tax advisor for your individual situation.

Return this form with check or money order payable to NCC, Inc. at the above address.
And always visit us at www.cambridgeglass.org to see what's new!

For Sale - NCC Publications

Published by NCC • Members receive a 10% discount

TITLE	REGULAR PRICE	MEMBER PRICE
1903 Cambridge Glass Catalog reprint 106 page reprint, paperback.	\$5.56	\$5.00
1910 NearCut Catalog Reprint 108 pages, paperback, no price guide	\$14.95	\$13.45
1927-29 Catalog Reprint 66 pages, paperback, no price guide, includes identification guide	\$9.95	\$8.95
1930-34 Catalog Reprint 250 pages, paperback with 2000 price guide	\$14.95	\$13.45
1930-34 Catalog Index Index for above	\$2.00	\$1.80
1940s Cambridge Glass Catalog reprint 613 page reprint, 3 hole punched	\$19.95	\$17.95
1949-53 Catalog Reprint 300 pages, paperback, no price guide	\$19.95	\$17.95
Cambridge Rose Point – A Collector’s Guide 2018 color, spiral bound	\$29.95	\$27.00
Cambridge Rose Point – 2nd Edition 2007 146 pages, paperback, no price guide	\$19.95	\$17.95
Caprice 200 pages, paperback, no price guide	\$19.95	\$17.95
Decorates 136 pages, paperback, no price guide	\$14.95	\$13.45
Etchings 2nd Edition 2006 102 pages, paperback, no price guide	\$17.95	\$16.15
Etchings: Blossomtime 26 pages, paperback, no price guide	\$7.95	\$7.15
Etchings: Candlelight 30 pages, paperback, no price guide	\$7.95	\$7.15
Etchings: Chantilly 44 pages, paperback, no price guide	\$7.95	\$7.15
Etchings: Diane 53 pages, paperback, no price guide	\$7.95	\$7.15
Etchings: Elaine 64 pages, paperback, no price guide	\$7.95	\$7.15
Etchings: Portia 57 pages, paperback, no price guide	\$7.95	\$7.15
Etchings: Wildflower 42 pages, paperback, no price guide	\$7.95	\$7.15
Rock Crystal Engravings 119 pages, paperback, no price guide	\$17.95	\$16.15
Rock Crystal Engravings (Listings) Companion to above; lists all pieces in all patterns	\$9.95	\$8.95
Other:		
Cambridge Ohio Glass in Color by Mary, Lyle and Lynn Welker 30 pages, color	\$6.61	\$5.95
Reflections by Degenhart Paperweight & Glass Museum 45 pp	\$5.56	\$5.00

How to Order by Mail or from the NCC Website

Send orders to:
NCC • PO Box 416 • Cambridge, OH 43725

OHIO RESIDENTS PLEASE ADD 7.25% SALES TAX

SHIPPING:
\$8.00 FOR THE FIRST PUBLICATION
\$2.00 FOR EACH ADDITIONAL ITEM

Please include your name, complete mailing address and your phone number or e-mail address.

Payments by check or Money Order only, payable to NCC

Books may also be purchased on the NCC website,
www.cambridgeglass.org.

available on
amazonkindle

The following books can be purchased on Amazon and downloaded to your Kindle device



Cambridge Glass
Colors



Cambridge Rose
Point

DEALER DIRECTORY

Dealer Directory - \$24 for 12-months, size limited by box (see below). Includes listing on NCC website. Electronic submissions should be emailed to: editor@cambridgeglass.org

Advertising Rates:

1/8 page \$15 1/4 page \$20
 1/2 page \$30 Full page \$50

Mailed submissions and all payments should go to PO Box 416, Cambridge, OH 43725. Deadline is 10th of preceding month. Ads must be paid in advance. Show listings are FREE; send info to PO Box or e-mail address 60 days before event.

<p style="text-align: center;">Max Miller Elegant American Glassware www.maxmillerantiques.com</p> <p>The Market Place 10910 Katy Freeway. 713-410-4780 Houston TX 77043 mmxglass@aol.com</p>	<p style="text-align: center;">ISAACS ANTIQUES (740) 826-0696</p> <p style="text-align: center;"><i>↔ located in ↔</i> DealBusters Marketplace 61 S. 2nd Street Byesville, OH (740) 605-1010</p>
<p style="text-align: center;">Glen & Carolyn Robinson White Rose Antiques Specializing in Depression Era Glassware</p> <p style="text-align: center;">2454 McFarland Road York, SC 29745</p> <p>803-684-5685 gandcrobinson@aol.com whiteroseglassware.com</p>	<p style="text-align: center;">MARGARET LANE ANTIQUES</p> <p style="text-align: center;">2 E. Main St. New Concord, OH 43762 Lynn Welker (740) 705-1099</p> <p style="text-align: center;">Cambridge Glass Matching Service Hours: Mon-Fri 10-12 AM, 1-5 PM or by appointment</p>
<p style="text-align: center;">CRYSTALLINE COLORS <i>Cambridge • Fostoria • Elegant Glass</i></p> <p style="text-align: center;">Medina Antique Mall Medina, OH (I-71, exit 218)</p> <p style="text-align: center;">Lynne R. Franks 216-661-7382</p>	<div style="border: 1px solid black; padding: 5px;"> <p style="text-align: center;">Connecting Buyers & Sellers!</p> <p style="text-align: center;">Tell us what you are looking for and we help find it.</p> <p style="text-align: center;">CAMBRIDGE GLASS.US</p> <p style="text-align: center;">P. Snyder 740-601-6018</p> <p style="text-align: center;">E-Mail and Find Your Glass!</p> <p style="text-align: center;">psnyder@cambridgeglass.us www.cambridgeglass.us</p> <p style="text-align: center;"><small>When you are searching for Cambridge glass, email your request and it is emailed to all members and dealers. P. Snyder, 1500 Edgewood Dr., Circleville, Ohio 43113</small></p> </div>
<p style="text-align: center;">CRYSTAL LADY</p> <p style="text-align: center;">1817 Vinton St. Omaha, NE 68108 Bill, Joann and Marcie Hagerty 402-699-0422</p> <p style="text-align: center;">Specializing in Elegant Glass & Collectibles www.crystalladyantiques.com</p>	<div style="border: 2px solid red; padding: 10px; text-align: center;"> <p style="font-size: 1.2em;">Our House Antiques</p> <p>Linda and David Adams Las Vegas, Nevada 702-302-8282</p> <p><i>Shows and Mail Order only</i></p> <p><small>email: David@OurHouseAntiques.com www.OurHouseAntiques.com</small></p> </div>



National Cambridge Collectors, Inc.
PO Box 416
Cambridge OH 43725
email: editor@cambridgeglass.org
website: www.cambridgeglass.org



Friends of Cambridge – Annual Fund

NCC exists through member giving using an Annual Fund system to raise operating funds and to ensure the preservation of Cambridge glass for future enthusiasts. The Annual Fund uses a common member "renewal" date and NCC sends out Annual Fund materials to everyone once a year. There are no monthly reminders or monthly renewal dates. The Annual Fund is NCC's primary means of support and all Annual Fund gift recognition levels are per household and include membership for all adults within the household. Additionally, each household will receive a subscription to the Crystal Ball newsletter, unlimited admissions to the museum, and rights to vote in elections for the Board of Directors. Multiple households at the same address are welcomed. NCC is a 501(c)(3) organization and Annual Fund gifts are allowed as a tax deduction under Section 170 of the Internal Revenue Code.

Levels of Membership

Thank you

Patron	\$35
Benefactor - Century	\$100
Benefactor - Mardi Gras	\$200
Benefactor - Japonica	\$500
President's Circle	\$1,000

Thank you

President's Circle includes Convention registration for two members in the household and one copy of any new NCC publications.

The National Museum of Cambridge Glass

Located at 136 S. 9th Street
in downtown Cambridge
Wed-Sat 9-4
Sunday 12-4

