



Cambridge Crystal Ball

Published by the National Cambridge Collectors, Inc. as a resource which informs, invites and inspires people to encourage the continued preservation of the glass produced by the Cambridge Glass Company of Cambridge, Ohio for future generations.

Issue No. 541

ISSN 2474-5987

September 2020

Another ebook Available

by Larry Everett

I am pleased to announce that the NCC's second book in electronic format is now available from Amazon Books. This book, *Cambridge Rose Point – A Collector's Guide*, is the first to be available in both print and electronic formats. A big thank you goes to author Gary Turner for giving the green light to this project. You may already have the print version, but I think you will want both versions.

The images are just stunning in electronic format and the advantage is that you can get to the content on your favorite device (desktop, laptop, tablet, or smart phone) anytime and anywhere you can receive a connection.

The Kindle® version is \$9.95 and can be previewed at no cost. You can search for "Cambridge Rose Point Book" or click this direct link:

https://www.amazon.com/Cambridge-Rose-Point-Collectors-Guide-ebook/dp/B08FYXMKJ3/ref=sr_1_1?dchild=1&keywords=Cambridge+rose+point+book&qid=1597770970&sr=8-1

Click on the "Look inside" link at the top right corner to view sample pages.

The book has been optimized for viewing on a Kindle Fire, iPad®, or Android tablet. When you purchase the book (\$9.95) it is downloaded into your Kindle library

Amazon, Kindle, Fire and all related logos are trademarks of Amazon.com, Inc. or its affiliates.

where it can be viewed on all of your electronic devices that have the Kindle app.

We welcome comments. If you have suggestions for the next publication or if you want to be part of the publishing team, please contact Dave Rankin or me.



If you have not yet checked out the new Cambridge Glass Colors book, please do so. Here is the direct link:

https://www.amazon.com/Cambridge-Glass-Colors-2020-Book-ebook/dp/B088HJ2KC2/ref=sr_1_5?dchild=1&keywords=Cambridge+glass+book&qid=1597771193&sr=8-5

Please let us know what Cambridge glass publication(s) you would like to see next. ■

What's Inside

Another ebook Available.	1
President's Message	3
Making the Best of 2020 at the Museum	4
Explaining The Hunt.	8
Just 4 Kids: Coloring	10
Just 4 Kids: Word Search	11
eBay Searching	13
eBay Report	14
New Members.	16

National Cambridge Collectors, Inc.

PO Box 416 Cambridge, OH 43725-0416

Board of Directors

2021

Ken Filippini Freeman Moore Lyle Stemen

2022

Julie Buffenbarger David Rankin Frank Wollenhaupt

2023

Nancy Misel Lindy Thaxton Lynn Welker

2024

Cindy Arent Larry Everett Mike Strebler

Officers

President	Freeman Moore
Vice-President	Ken Filippini
Secretary	Nancy Misel
Treasurer	Lindy Thaxton
Sergeant-at-Arms	Larry Everett

Director of Strategic Planning	Ken Filippini
Director of Human Resources	David Ray
Chair, Endowment Committee	David Rankin

MEMBERSHIP QUESTIONS?

Please send address changes to:

Membership - NCC

PO Box 416

Cambridge, OH 43725-0416

or by e-mail to:

membership@cambridgeglass.org

Member Services

Vice President

Member Relations
Convention
Member Social Media
Glass Dash
Glass Show
Study Groups
Webmaster

Freeman Moore (acting)
Freeman Moore, Membership Database
Larry & Susan Everett
David Ray
Larry Everett & Frank Wollenhaupt
David Ray, Mike Strebler, Jack Thompson
Jeannie Moore, Study Group Coordinator
David Adams

Development

Vice President

Campaigns

Events

Projects
Publicity

Julie Buffenbarger
Ken & Jane Filippini, Annual Fund Directors
Larry Everett, Director of the Heritage Society
Bev & Will Acord,
Lynn Welker, Auction Managers
Susan Everett & Frank Wollenhaupt, Jewelry
Convention: Jonathan Fuhrman

Education

Vice President

Crystal Ball
Publications
Media Productions
Research

Larry Everett
Freeman Moore, Editor
Larry Everett, Director of Publications
Dave Rankin, Director of Media Productions
Dave Rankin, Director

Museum

Vice President

Public Operations
Facilities & Grounds

Inventory Management
Collections
Museum Gift Shop

Archivist
Museum Social Media
Community Relations

Cindy Arent
Lindy Thaxton, Director of Public Operations
Cindy Arent,
Joe Miller,
Lindy Thaxton
Lindy Thaxton, Director of Inventory Management
Lynn Welker, Director of Collections
Cindy Arent, Gift Shop Manager
Lynn Welker, Gift Shop Manager
Mark Nye, Director of Archives
Cindy Arent, Director
Cindy Arent

Administration

Vice President

Accounting & Finance

Lindy Thaxton
Lisa Neilson, Office Manager



CONTACT US

NCC Business Manager
Phone: 740 432-4245

businessmanager@cambridgeglass.org



Freeman Moore, President

e-mail: president@cambridgeglass.org

Nancy Misel, Secretary

e-mail: secretary@cambridgeglass.org

Heritage Society

Ensuring the preservation mission of the NCC through planned giving and estate bequests.

Members of The Heritage Society are those who have included the NCC in their wills or estate plans, thus providing the organization with a secure future.

The mission of The Heritage Society is to foster smart estate planning and to assure that NCC is not forgotten as an important beneficiary. Any pledge is meaningful and appreciated.

All Cambridge collectors - both current and future - will benefit from, and be grateful for your support.

Let us know how we can help with your future plans.

Museum:

National Museum of Cambridge Glass



Like us on Facebook

Member: Cambridge Glass/National Cambridge Collectors

NCC Website: www.CambridgeGlass.org

Miami Valley Study Group Website: www.mvsg.org



PRESIDENT'S MESSAGE

What Do We Do?

September is arriving, and not much else. When you look at the Glass Show Calendar for the rest of the year, you'll find it empty. We cancelled our October meeting, and moved the auction to next March. Not much is happening.

We had our Annual Meeting in June. I want to give a big *thank you* to our secretary Nancy Mizel for getting the minutes done quickly, allowing them to be printed in the August Crystal Ball.

One piece of information presented at the annual meeting was the result of the board of directors election. Allow me to go further on that subject.

Your board of directors has twelve members, each elected to a four year term, with three positions open each year. In the fall, a nominating committee is formed and solicits candidates for the election slate. The slate is approved in March and then the ballot process begins and ends in June with the results announced.

After the results are announced, the new board of directors meets to elect the officers: President, Vice-President, Treasurer and Secretary. The board also appoints up to five operational vice-presidents to manage organization divisions including Member Services, Museum, Education, Development and Administration. Over the next few months, I'll explain each of the divisions. Let's start with what is included in Member Services.

Member Relations: This function maintains the master database of all Friends of Cambridge, tracking household renewals and Annual Fund contribution amounts. Sending electronic birthday wishes, acknowledging service anniversaries, following up with new members; are some examples of keeping engaged with you throughout the year. And of course, a major activity is the production and mailing of the Annual Fund materials, and the subsequent reminder mailings.

Member Development: This is member recruitment and involves distributing membership forms and related literature, and where possible, having a presence at regional glass shows to recruit new members. As Uncle Sam would say, "I Want You" to help spread the word.



Convention: Our annual convention and related activities of the glass show and glass dash, are functional parts of member services. Volunteers to manage the events as well as conduct the events are always needed, and very much appreciated.

Study Groups: We encourage the creation of study groups and to meet regularly and report back to the membership. Throughout our history, we have had 20 study groups, but now, only 2 (maybe 3) are active.

Social Media - Members: We have a Facebook™ account to share information of interest to the online world. (There is a separate Social Media supporting the Museum function.) I know that some members do not have an online presence, but we need to try new techniques to entice the newer generation.

Website: We maintain www.Cambridgeglass.org as another tool to share information with you. David Adams keeps the NCC information up-to-date and is willing to post member contributed photos as well.

Next month, I'll explain another division.

What's coming?

Be safe. Be careful. Take the correct precautions.

What's on your Cambridge "wish list" for this year and beyond, and how can we help?

Sincerely,

Freeman Moore
president@cambridgeglass.org

Making the Best of 2020 at the Museum & More Good News!

By Cindy Arent

This season at the museum is not what we expected, but we are more and more encouraged with each day. The visitors have been very nice and understanding when they learn that certain exhibits are closed due to COVID-19. They have been respectful of our safety guards and required procedures and have expressed their appreciation.

In last month's article, I asked everyone to keep their fingers crossed for the two remaining grants that have been submitted this year. Well, it worked! We were notified that we received a grant from the John W. and Edna McManus Shepard Fund and also the grant through Cambridge Main Street/ Heritage Ohio. More information will follow about these two grants in the Crystal Ball next month. Good news!

AVC Communications came to the museum to film for our two new videos. One will be focused on the group tour industry and the other video will be a short commercial type film to promote the museum to the leisure market. The new videos are made possible by the grant from the Cambridge/Guernsey County Visitors & Convention Bureau. As soon as the videos are complete, links will be posted on the website and social media.

Travel Influencers participating in a 3 day/3 county tour, *Found in Ohio – Traces, Trails & Tales*, arrived at the museum on August 11, sponsored by the VCB. We did our best to provide the group with an informative experience while practicing safety procedures. The Travel Influencers will be posting photos and information about the museum on their social media accounts and we have already seen good results.

Croswell VIP Motorcoach Tours arrived at the museum with a small group on August 14 and we were happy to see them! The group was enjoying "An Ohio Sampler Getaway" and had fun exploring the museum and shopping in the gift shop.

The museum Holiday hours have been set. We will be open Friday and Saturday from Noon – 4pm; November 6 – December 19. It is more important to plan ahead

and be ready, than to do nothing. We remain optimistic!

During August, we were very fortunate to have several members visit the museum to shop and volunteer to help with projects. When we unexpectedly closed the museum in March due to the pandemic, several maintenance projects were left to accomplish. One project left undone was cleaning the museum sidewalk. In August, NCC members David Ray and Chuck Tandy arrived at the museum on a Saturday morning to spray the sidewalk with Wet & Forget®. They were very careful to leave a path for visitors to enter the museum. We appreciate their help!



Another member visiting in August was Kyme Rennick, along with her brother, Rob Wall. Kyme and Rob's mother was longtime member Julia Wall who passed away earlier this year. Julia had requested that her collection of Marjorie etched pieces come home to the museum. We have fond memories of Julia and Kyme attending one of our etiquette programs a few years ago.

I would like to thank all NCC members and friends for your continued support during these trying times. It is appreciated more than you know. We hope to see you at the museum one day soon!



During the filming of our new group tour video, smiling faces are welcoming imaginary guests to the museum. (L-R) Sandi Rohrbough, Terri Herron, Tom Davey, Sharon Bachna, Lindy Thaxton, Anna Pavlov and Laura King.



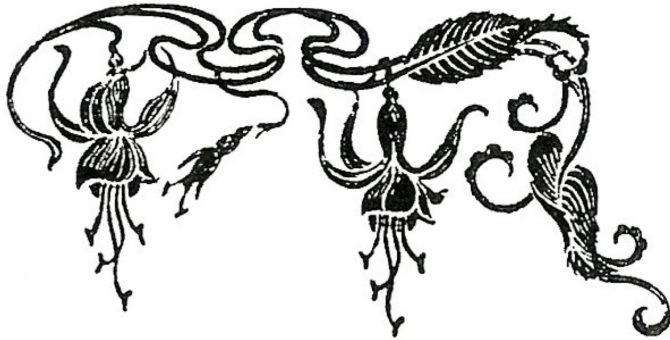
NCC member Tom Davey and Terri Herron (VCB Office Manager) enjoy time in the museum Speakeasy with the fabulous Cambridge barware on display.



NCC member Reggie Gerko (right) stopped in to purchase a wedding gift. She chose Rose Point!



NCC member Joey Pirl visited the museum and couldn't resist purchasing a few pieces of Cambridge. The new large gift boxes are donated by a man that travels past the museum and always stops in to see if we need any boxes. How nice!



Marjorie etching: 1915 - 1930s



Rob Wall and NCC member Kyme Rennick recently visited the museum to donate their Mother's (Julia Wall) etched Marjorie collection. They are holding a #93 3 Pint Tankard etched Marjorie, part of the donation. Thank you!



Dressed and ready to greet our first coach of the season are: (L-R) Lindy Thaxton, Cindy Arent and Sharon Bachna.



Our first motorcoach visitor of the year waves and smiles as she enters the museum. The group was from Croswell Tours, Williamsburg, OH.

VIRGINIAN DESIGN

THE NEW

VIRGINIAN

Eighteenth Century Irish glassware in Waterford style cuttings was much admired and highly prized.

Virginian is an adaptation of that styling done in the modern manner—and what a delightful result—clear, sparkling Crystal, carefully finished to give that added brilliance so characteristic of Cambridge ware.

Compared with the early product, Virginian is more practical, yet the cost so moderate that all may enjoy its possession.



*“A thing of beauty,,
is a joy forever”*

In THE CAMBRIDGE SALVER a beautiful dish is obtained having a Double Use—As a cake dish it is unusually attractive made in the Virginian Pattern exemplifying culture and hospitality—Use upside down and you have a beautiful table center for fruit and flowers.

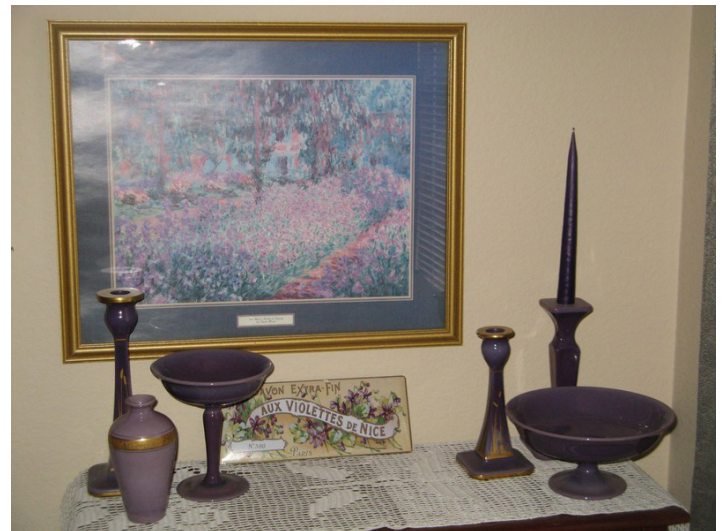


SALVER

the
Aristocratic
creation
with a
**DOUBLE
SERVICE**

How do you display your glass?

Here is how one member enjoys looking at some Primrose and Helio items.



Explaining The Hunt

By David Ray

Editor's note: The following appeared as a posting on Facebook.

Explaining the “thrill of the hunt” is difficult to explain to non-collectors, but I know this audience understands it perfectly. While out shopping last weekend, I decided to hit a small out-of-the-way shop I had not visited since prior to the COVID-19 outbreak. Given its proximity to Cambridge, OH, the shop has a strong possibility of having Cambridge glass for sale. Upon entering the shop, I quickly saw a couple pieces I needed to purchase. While preparing to pay for my purchases, I noticed a very unique piece of Cambridge glass sitting on a table behind the cash register. The cashier stated this piece was not yet for sale because the dealer needed to do more research on the piece. Doesn't this sound like one of those bad dreams?

The item I saw was a man's Sani-Shaving Service. The patent for this item was applied for in February 1927. This item comes in two pieces, a base and a lid. The base contains specific holders for a safety razor, extra blades, caustic pencil, tube of shaving cream and a brush. The lid fits over the entire base and has a hole drilled in the knob to allow moisture to evaporate. I have seen the Sani-Shaving Service once previously in Light Emerald. This set has a decorative gray cutting on this lid.

Having given the cashier my business card before leaving, I received a call about 30 minutes after leaving

the shop. The owner of the Sani-Shaving Service was reading to discuss the sale this unique piece. Before the shop closed for the day, I had purchased this very cool example of Cambridge glass. For the serious collector, it only takes one or two exciting finds each year to keep us going. I am looking forward to my next shopping adventure!

Reader feedback:

JP: That is super cool! I get excited every time I see a really cool piece of Cambridge glass too!

-- Thanks JP! Cambridge produced so many unique pieces of glass.

DS: My husband collected safety razors and had over 1,000. We did collect accessories, but only for decorating. He has never seen anything like this and he (we) would have coveted it! What a fantastic find.

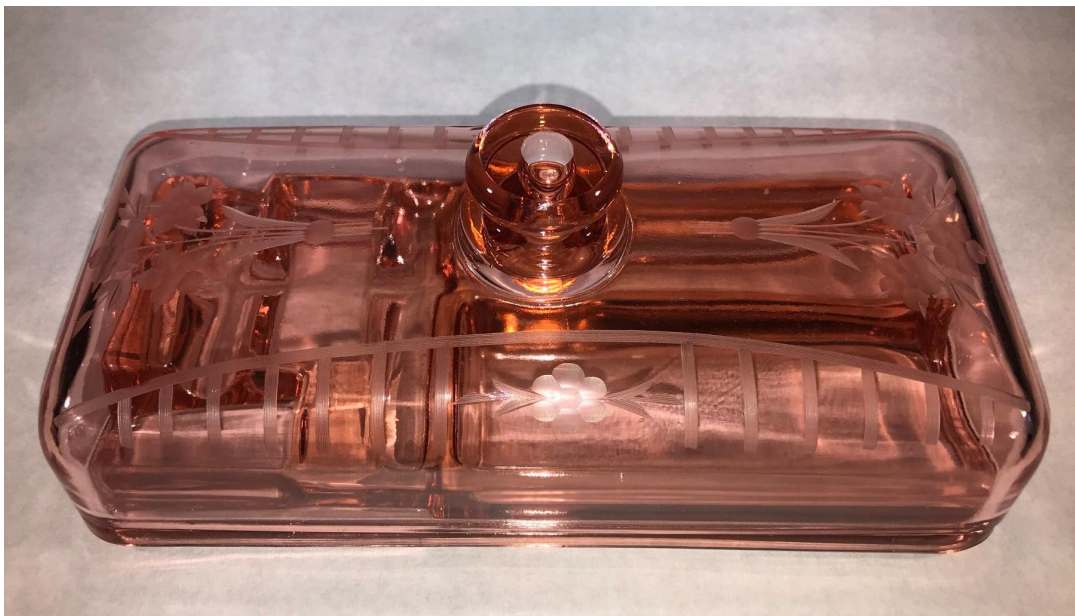
MW: That is definitely a “to die for” piece.

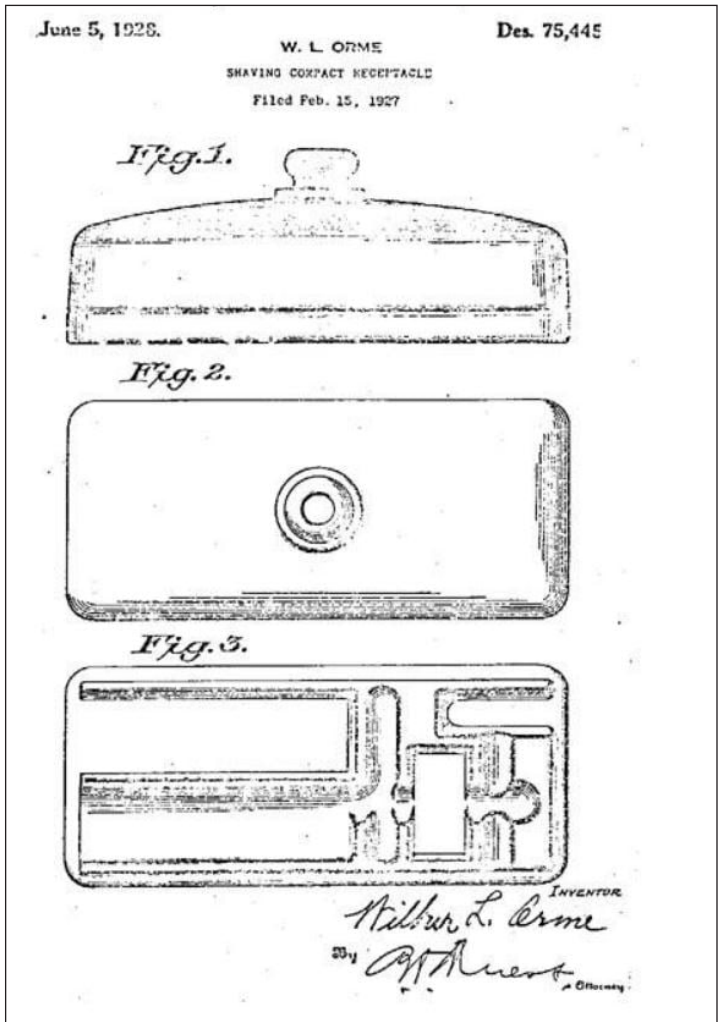
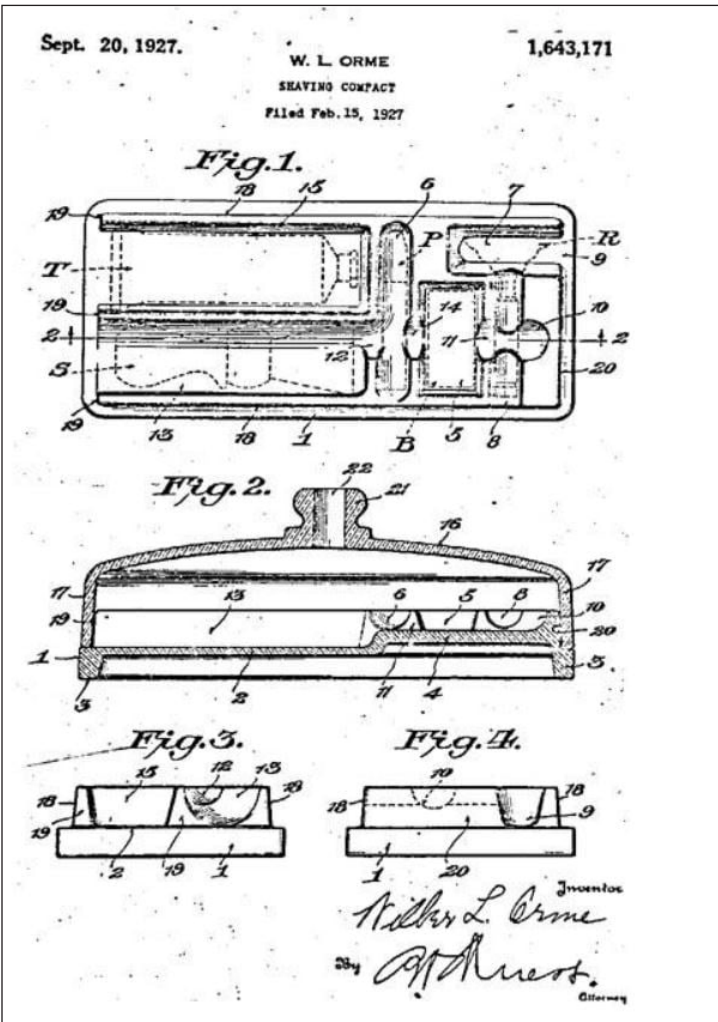
TJ: Very nice find!

TW: Wonderful find!

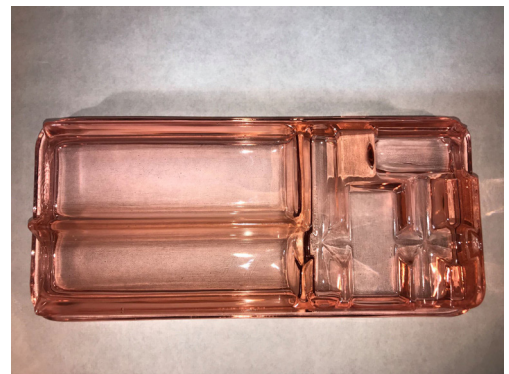
JE: Wow what a great piece. Another piece to add to my list of glass to look for. Thanks for sharing your find

-- Thanks JE. Glass companies tried to make a piece of glass to fit everyone's needs. Some were successful and some were not. My guess this Sani-Shaver Service was more elaborate than most men needed. ■





More pictures of the Sani-Shaving Service



Just ④ Kids!

What colors would be best?

Consider these activities for younger readers to learn and appreciate some of the products from the Cambridge Glass Company.

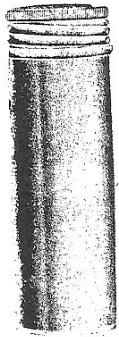


WORD SEARCH: Cambridge Glass Animals

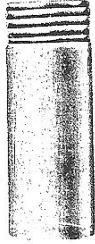
J M O R Q V J N E L E P H A N T
S Q U I R R E L M B L U E J A Y
U I I I F I P G O E U B I R D P
T D D O G X P L N T J D V R D I
D B V V F F C A K A X R A A O G
Y C X A R P D S E F T L J B L E
B D L I O A B S Y H I O X B P O
P O W L G D K U M O T H N I H N
S U N Q P F B L O W N H K T I N
W S T H P C V S M T J L I O N Y
A E U T U R T L E X T U A O N U
N A R H E T Q J S K E A G L E V
Q G K O D M U P H E R O N O E F
B U E R Q O C A T E B U N N Y R
X L Y S E O P R E S S E D V T N
Q L E E B U T T E R F L Y Q A M

Search two directions (down and right) for:

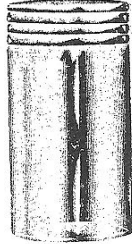
GLASS BLOWN PRESSED CAT DOG LION FROG MONKEY
SWAN TURTLE BIRD EAGLE OWL BLUEJAY HERON DOLPHIN
BUTTERFLY MOTH PIGEON SEAGULL TURKEY RABBIT BUNNY
ELEPHANT HORSE SQUIRREL



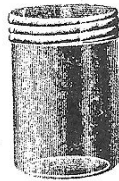
175. Candy Jar.
4, 8 and 12 oz. sizes.



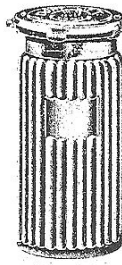
100. 4 oz.
Extra Tall
Candy Jar.



100
Candy Jar,
3/4, 1, 2, 4, 6, 8, 12,
16 and 32 oz. sizes.



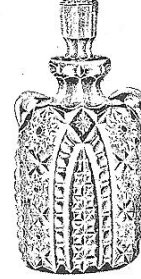
150. 12 oz.
Candy Jar.



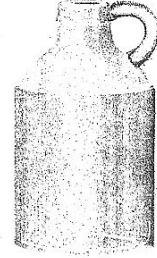
2630. 6 oz.
Candy Jar.



2669. 4 oz. Jug.
2675. 2 oz. Jug.



2667. 4 oz. Jug.
2668. 2 oz. Jug.



Plain Jug,
4 and 8 oz. sizes.



2 1/2 oz. Rabbit.



2828. 4 oz. On-the-Hog.



3 oz.
Standing Elephant.



2830. 4 oz. Squirrel.



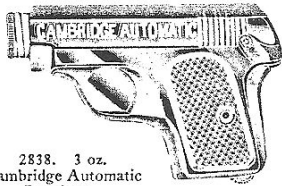
2 oz.
Elk Tooth Bottle.



3 oz.
Irishmen's Head.



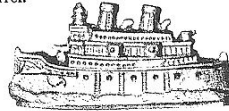
3 oz. Tipperary Hat.



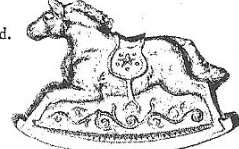
2838. 3 oz.
Cambridge Automatic
Revolver.



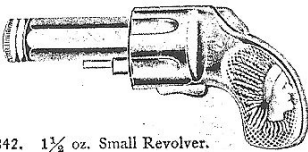
7 oz. U. S. Dreadnaught Boat.



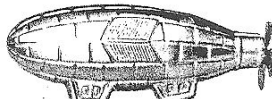
1 1/2 oz. Battle Ship.



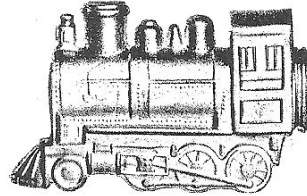
1 1/2 oz. Hobby Horse.



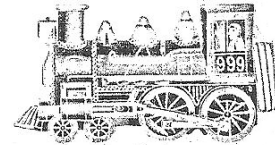
2842. 1 1/2 oz. Small Revolver.



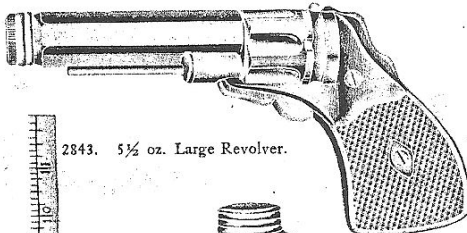
3 oz. Air Ship.



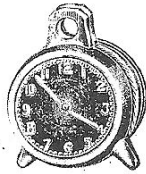
2844 1/2. 3 oz. Large Engine.



2844. 1 1/2 oz. Small Engine.



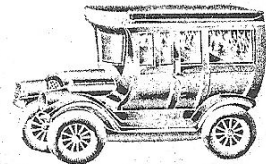
2843. 5 1/2 oz. Large Revolver.



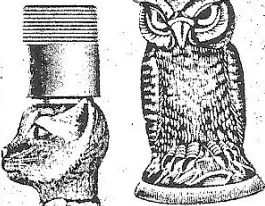
2814
2 1/2 oz. Clock.



2616. 1 1/2 oz.
Plain Candy Horn.



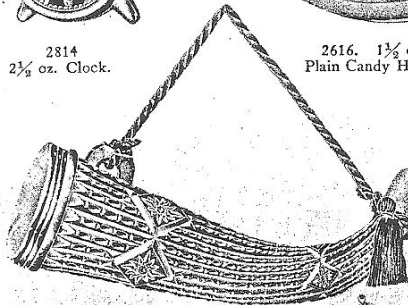
2845. 2 1/2 oz. Automobile.



2829. 3 1/2 oz. Owl.



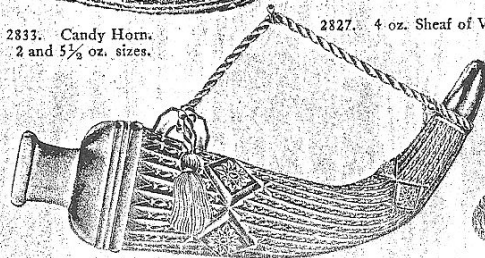
Glass Dog and Cap.
8 and 22 oz. sizes.



2833. Candy Horn.
2 and 5 1/2 oz. sizes.



2834. 5 1/2 oz. Bottle Horn.



2827. 4 oz. Sheaf of Wheat.



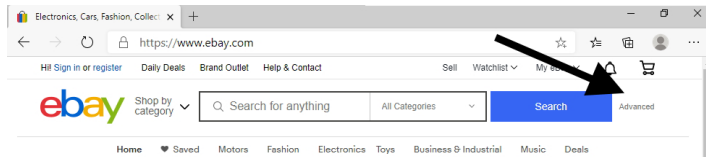
2672. 5 oz. Bottle Candlestick.

eBay Searching

by Michael Krumme

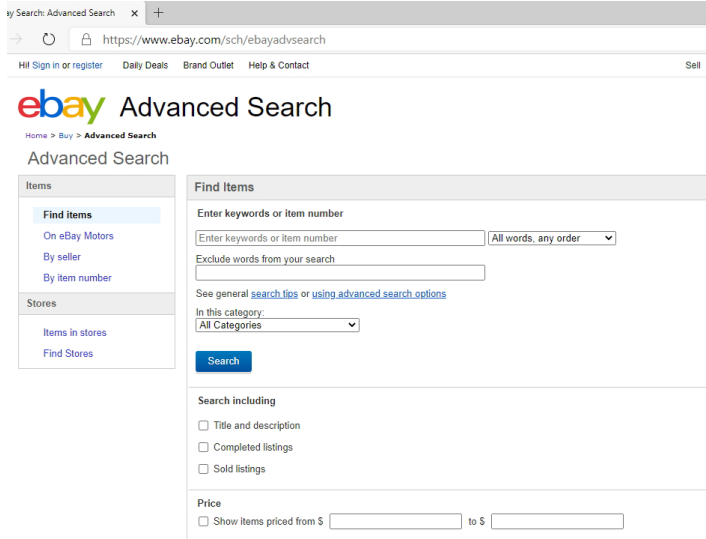
RIGHT as the submission deadline for the September Crystal Ball was looming, I noticed that eBay has made yet another unwelcome change. It used to be quite easy to navigate to the Cambridge category, scroll down a bit, and find in the left-hand column many options for browsing the listings. One of them was a checkbox for “Completed Items” (closed auctions for items sold and unsold) and another for “Sold Items” (self-explanatory.) Now there is a vast empty space where these and many other search and browse functions used to be.

Fortunately, my trusty “Advanced” button, located just to the right of the big blue “Search” button near the top right of the screen is still there.

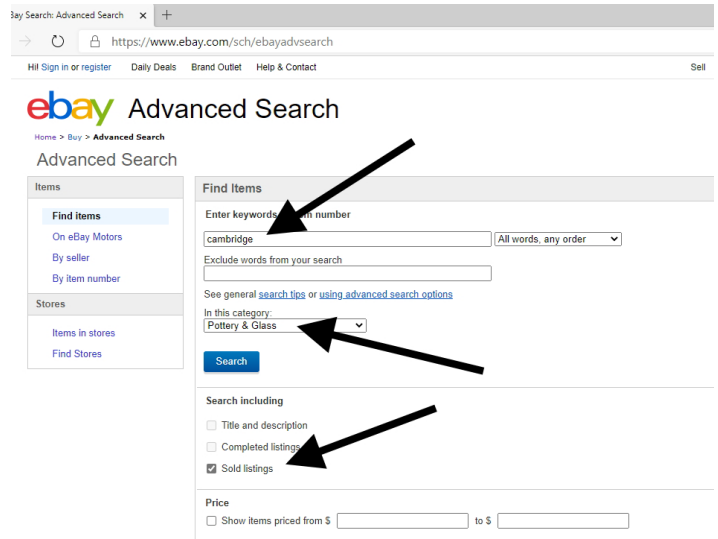


Here is how to browse the sold listings now:

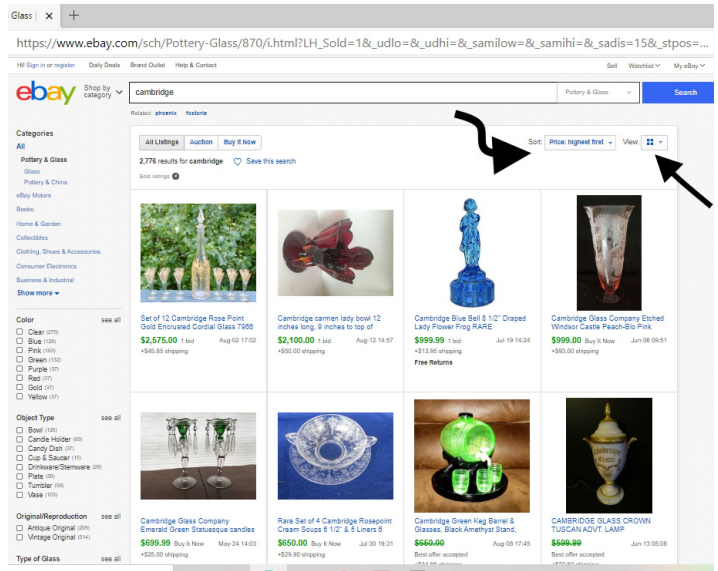
Click on the word “Advanced.”



The top section of the next page has a heading of “Find Items.” Enter the word Cambridge as your keyword. Below that, in the section titled, “In this category,” click in the box, and select Pottery & Glass from the drop-down menu. Don’t click the blue Search button yet – right below that is the heading, “Search including.” Choose the third option in the list, Sold listings. THEN click the blue Search button.



At the next page, you can use the Sort and View functions to adjust the order in which you see items, and how many appear on the page. I prefer the Gallery view, so I can see more listings per page.



I sort the listings by Price: highest first. This tells me what the most expensive Cambridge items have sold for, which is good for capturing “wow” items. However, there may be many fine items that did not sell for a high price, so this method can cause one to overlook many noteworthy sales – unless you have all the time in the world to browse EVERY sold listing.

Let me know if you have any “secrets” you want to share. Happy searching.

Welcome to the eBay Report, featuring Cambridge glass items that sold on eBay circa mid-July to mid-August 2020. Selling prices are rounded to the nearest dollar. If no color is mentioned, assume that the piece or part of it being discussed is crystal. If I refer to an auction as "incognito," that means that the seller did not know he or she was offering Cambridge glass, and didn't list the item in one of the Cambridge glass categories. Here we go:

Opagues

An Ebony #2367 10 inch vase with a gold cattails decoration over an iridescent background sold for \$15 in an incognito listing, as did a #10 7 inch 3-toed bowl in Azurite.



A seller offered a piece described as a "Cambridge 'tomato' glass vase." Tomato was a color that was posited as Cambridge in the late 1970s, but none of the shapes in which this color was seen were ever a true match to any Cambridge shapes. Eventually, it was proven to have been made by the Co-Operative Flint Glass Company, which called the color Sunset. The piece was actually a footed urn, minus the cover. I hope the buyer knew it was Co-Op, not Cambridge.



A 3-toed covered candy with a gold encrusted band etch of roses on the lid in Pomona Green (the color formerly known as Avocado) sold for the opening bid of \$160. The seller provided no measurements, so this was either the #299 5 inch candy, or the #300 6 inch candy. I also found another catalog image where the #300 was shown with a stated size of 7 inches. Hmmm.



A pair of #222 6 inch candlesticks in Helio with somewhat worn gold trim sold for \$46.

Another pair of #222 6 inch candlesticks in Primrose with an almost all-over yellow enamel decoration with black trim sold for \$260. On the underside of one was a fancy original label from Holman's Treasure Chest, located on



Pacific Avenue in Huntington Park, which is a Los Angeles suburb. I have seen or found several nice pieces of 1920s glass with original labels of this type, obviously applied by the gift store where the items were sold.

Yet another pair of #222 sticks in Primrose, these paired with a low cupped bowl, all decorated with a silver deposit design of garlands, baskets, and a hanging cameo was offered for \$265 opening bid, but failed to sell.



Rose Point

A 3500/103 blown candy box & cover sold for \$65. At first, I thought this was a marriage, because I usually see this blown lid on the 3121 and 1066 stemmed comports, but there it was, in the pages of the 1940 catalog reprint showing the 3500 Gadroon line.



A 9 inch chimney for the #1604 hurricane lamp sold for \$104.

A #3500 tall sherbet or champagne with Carmen bowl and gold encrusted etching was offered for an opening bid of \$565, but "the listing was ended by the seller because there was an error in the listing." Mmmm-hmm...

A single #922 Round cream soup with underplate sold for \$150, while the same dealer had a set of 4 which brought \$650.



A set consisting of the #1372 16 inch 28 ounce decanter and 12 #7966 cordials, the etching gold encrusted, sold for \$2,575. The decanter had cut and polished panels on the neck, and a cut star on the underside, and featured the original stopper. Can you say, "show stopper"?



Statuesque (Nude Stem) Items

An ashtray with Amethyst top wafted away for \$145.

A set of six clarets, one each in Royal Blue, Carmen, Amethyst, Forest Green, Gold Krystol, and Heatherbloom sold for \$275. The two pastel colors had an optic bowl.



A bud vase with Royal Blue top was nipped in the bud for \$184 in a Buy It Now listing.



A pair of 7-3/4 inch tall “liquor wine 5oz cordials” in Forest Green sold for \$300. Apparently, “throw it all at the wall, see what will stick; one of these words has to be right” was the theory here. I surmise that these were actually the claret size, but am willing to be corrected.



A set of 4 Royal Blue “wines” (we would call them 9 inch table goblets) sold for \$475.

A set of 3 Amethyst cordials sold for \$500. These are the original style cordials, with cupped-in rim, rather than the straight-sided brandies (which Cambridge later renamed “cordials.”) Whatever! As long as the stem holds some Rothman & Winter crème de violette, I’m happy.

Etched Tableware and Stemware

This month’s comedic relief was provided by the seller who offered an “Antique Cambridge or Fostoria glass Dome for table lamp.” The item was actually the blown insert that would snap into a sterling silver foot and stem that comprises a comport, etched Chantilly. Well at least the seller picked the right category. It sold for \$16.



A 10-1/2 inch plate etched Hunt scene over a navy blue enameled background and gold encrusted in the etching, sold for \$65. The same seller offered a second one, which sold at the same price.

A Decagon center handled tray etched Cleo, unusual in Amethyst, was served up for \$100.



A PeachBlo #3400/16 cream & sugar (the elegant “squared cone” shape) etched Gloria brought \$145 for the pair. This shape is more commonly seen with the Apple Blossom



etching, which explains why this Gloria set sold for more than the Apple Blossom sets have been fetching lately.

Miscellaneous

A crystal and satinized Cambridge store display sign (the one shaped like the oval paper label the company applied to its glass) sold for a surprisingly low \$70. For comparison, one sold in late June for \$139 in a Buy It Now listing.



A cat decanter WITH the original tumbler that goes on top, in Topaz (not Gold Krystol, but the “vaseline” yellow) sold for \$130. You almost never see them with the tumbler intact. It would be worth your time to study the seller’s photographs, in case you see a stray tumbler (as opposed to a stray cat.)



A #3400/38 80 ounce ball jug in Heatherbloom rolled away for \$150, interior scratches were noted.

A pair of #200/1 tall square based candleholders etched #510 Rose sold for the opening bid of \$300. It didn’t occur to the seller to tell us how tall these lovelies were, but I’m guessing 10 inches. That was the height of the pair I spotted in the 1921 catalog, but I wonder whether even taller ones might have been made in this shape?



An Eagle flower frog in PeachBlo soared away for \$350.

A 10 inch Flower Center (aka “Flying Nude” footed bowl) in Carmen flew away for \$2,100.

That’s it for now. If you see any interesting Cambridge glass on eBay that you think I should be watching or reporting on, or if you have any other input, feel free to contact me at LAGlass@pacbell.net. I am well aware that I don’t catch every interesting listing, especially those in a category other than Cambridge. Until next time, happy Cambridge hunting!

NCC Events

~~2020 Fall Meeting~~
~~Friday October 23, 2020~~
Cancelled

2020 Auction - rescheduled
Saturday March 20, 2021

Member Benefit

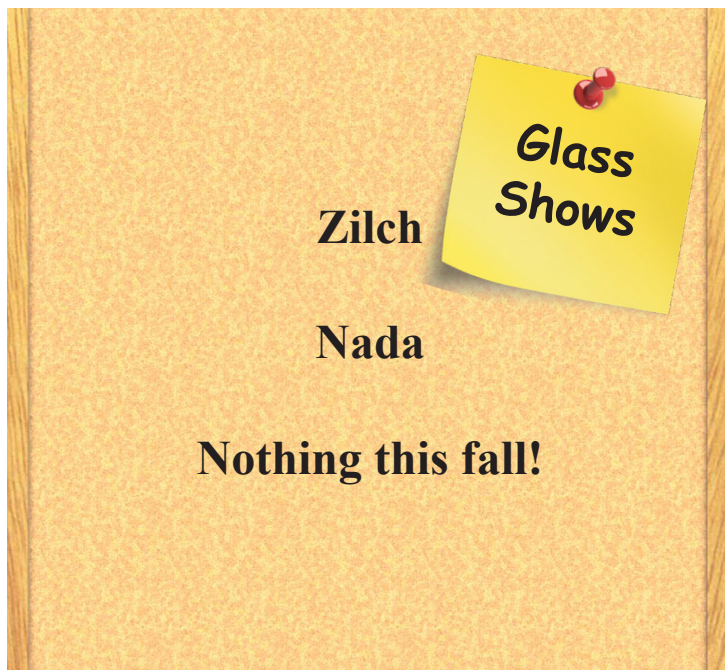
Each NCC household is allowed one free 20-word classified ad in the Crystal Ball per calendar year as part of their membership. This can be a "For Sale" or "Wanted" type of classified ad. Submit your ad by email to editor@cambridgeglass.org

CLASSIFIEDS

Nothing this month.

NCC welcomes the
following new members

John O'Mara	FL
Kelly O'Mara	FL



Recent Finds



3103 - 9 oz. Goblet, RCE 906 Mansard

Recruit
and
Retain

Give this page to a friend



The National Cambridge Collectors
P.O. Box 416 ~ Cambridge, Ohio 43725

“FRIENDS OF CAMBRIDGE” MEMBERSHIP

The National Cambridge Collectors, Inc. (NCC) is a non-profit organization dedicated to the education and preservation of the great work of the Cambridge Glass Company. Founded in 1973, we depend on the financial support of our members, who we call **Friends of Cambridge**, for the majority of our operating budget. Won't you consider becoming a Friend of Cambridge? You can also complete this online at: <http://cambridgeglass.org/online/>

Friend #1 _____

Friend #2 _____

Friend #3 _____

(continue on reverse if needed - indicate any children and their year of birth, only those 18 and older residing in your household may vote)

Address _____

City/State/Zip _____

Email Address (required) _____

Phone Number _____

Crystal Ball newsletter delivery: ___ email (color) ___ paper (black & white)

Glass collecting interest: _____

New Member? (Y/N) ___ or Renewal? ___ If renewal, Member #s _____

Levels of Membership

Patron \$ 35

Century Level	\$ 100	Mardi Gras Level	\$ 200
Japonica Level	\$ 500	President's Circle	\$ 1,000

All members receive the Crystal Ball, free Museum admission and 10% off any book/DVD purchases, President's Circle includes Convention registration for two members in the household and one free copy of any new NCC publication.

All memberships are renewed annually via The Annual Fund mailing in late March/early April. All Annual Fund gift recognition levels are per household and include membership for everyone within the household 18 and older. Each household will receive a subscription to the Crystal Ball newsletter, unlimited admissions to the museum, and rights to vote in elections for the Board of Directors and discounts on NCC books. NCC is a 501(c)(3) organization and Annual Fund gifts are allowed as a tax deduction under Section 170 of the Internal Revenue Code. Contact your tax advisor for your individual situation.

Return this form with check or money order payable to NCC, Inc. at the above address.
And always visit us at www.cambridgeglass.org to see what's new!

For Sale - NCC Publications

Published by NCC • Members receive a 10% discount

TITLE	REGULAR PRICE	MEMBER PRICE
1903 Cambridge Glass Catalog reprint 106 page reprint, paperback.	\$5.56	\$5.00
1910 NearCut Catalog Reprint 108 pages, paperback, no price guide	\$14.95	\$13.45
1927-29 Catalog Reprint 66 pages, paperback, no price guide, includes identification guide	\$9.95	\$8.95
1930-34 Catalog Reprint 250 pages, paperback with 2000 price guide	\$14.95	\$13.45
1930-34 Catalog Index Index for above	\$2.00	\$1.80
1940s Cambridge Glass Catalog reprint 613 page reprint, 3 hole punched	\$19.95	\$17.95
1949-53 Catalog Reprint 300 pages, paperback, no price guide	\$19.95	\$17.95
Cambridge Rose Point – A Collector’s Guide 2018 color, spiral bound	\$29.95	\$27.00
Cambridge Rose Point – 2nd Edition 2007 146 pages, paperback, no price guide	\$19.95	\$17.95
Caprice 200 pages, paperback, no price guide	\$19.95	\$17.95
Decorates 136 pages, paperback, no price guide	\$14.95	\$13.45
Etchings 2nd Edition 2006 102 pages, paperback, no price guide	\$17.95	\$16.15
Etchings: Blossomtime 26 pages, paperback, no price guide	\$7.95	\$7.15
Etchings: Candlelight 30 pages, paperback, no price guide	\$7.95	\$7.15
Etchings: Chantilly 44 pages, paperback, no price guide	\$7.95	\$7.15
Etchings: Diane 53 pages, paperback, no price guide	\$7.95	\$7.15
Etchings: Elaine 64 pages, paperback, no price guide	\$7.95	\$7.15
Etchings: Portia 57 pages, paperback, no price guide	\$7.95	\$7.15
Etchings: Wildflower 42 pages, paperback, no price guide	\$7.95	\$7.15
Rock Crystal Engravings 119 pages, paperback, no price guide	\$17.95	\$16.15
Rock Crystal Engravings (Listings) Companion to above; lists all pieces in all patterns	\$9.95	\$8.95
Other:		
Cambridge Ohio Glass in Color by Mary, Lyle and Lynn Welker 30 pages, color	\$6.61	\$5.95
Reflections by Degenhart Paperweight & Glass Museum 45 pp	\$5.56	\$5.00

How to Order by Mail or from the NCC Website

Send orders to:
NCC • PO Box 416 • Cambridge, OH 43725

OHIO RESIDENTS PLEASE ADD 7.25% SALES TAX

SHIPPING:
\$8.00 FOR THE FIRST PUBLICATION
\$2.00 FOR EACH ADDITIONAL ITEM

Please include your name, complete mailing address and your phone number or e-mail address.

Payments by check or Money Order only, payable to NCC

Books may also be purchased on the NCC website,
www.cambridgeglass.org.



The following books can be purchased on Amazon and downloaded to your Kindle device



Cambridge Glass
Colors



Cambridge Rose
Point

DEALER DIRECTORY

Dealer Directory - \$24 for 12-months, size limited by box (see below). Includes listing on NCC website. Electronic submissions should be emailed to: editor@cambridgeglass.org

Advertising Rates:

1/8 page \$15 1/4 page \$20
1/2 page \$30 Full page \$50

Mailed submissions and all payments should go to PO Box 416, Cambridge, OH 43725. Deadline is 10th of preceding month. Ads must be paid in advance. Show listings are FREE; send info to PO Box or e-mail address 60 days before event.

<p style="text-align: center;">Max Miller Elegant American Glassware www.maxmillerantiques.com</p> <p>The Market Place 10910 Katy Freeway. 713-410-4780 Houston TX 77043 mmxglass@aol.com</p>	<p style="text-align: center;">ISAACS ANTIQUES (740) 826-4015</p> <p style="text-align: center;">↔ located in ↔ DealBusters Marketplace 61 S. 2nd Street Byesville, OH (740) 605-1010</p>
<p style="text-align: center;">Glen & Carolyn Robinson White Rose Antiques Specializing in Depression Era Glassware</p> <p style="text-align: center;">2454 McFarland Road York, SC 29745</p> <p>803-684-5685 gandcrobinson@aol.com whiteroseglassware.com</p>	<p style="text-align: center;">MARGARET LANE ANTIQUES</p> <p>2 E. Main St. New Concord, OH 43762 Lynn Welker (740) 705-1099</p> <p>Cambridge Glass Matching Service Hours: Mon-Fri 10-12 AM, 1-5 PM or by appointment</p>
<p style="text-align: center;">CRYSTALLINE COLORS <i>Cambridge • Fostoria • Elegant Glass</i> Penny Court Mall, Cambridge - 2 booths Medina Antique Mall Medina, OH (I-71, exit 218)</p> <p style="text-align: center;">Lynne R. Franks 216-661-7382</p>	<div style="border: 1px solid black; padding: 5px;"> <p style="text-align: center; background-color: #4b0082; color: white; margin: 0;">Connecting Buyers & Sellers!</p> <p style="text-align: center; margin: 0;">Tell us what you are looking for and we help find it.</p> <p style="text-align: center; background-color: #4b0082; color: white; margin: 0;">CAMBRIDGE GLASS.US</p> <p style="text-align: center; margin: 0;">P. Snyder 740-601-6018</p> <p style="text-align: center; background-color: #4b0082; color: white; margin: 0;">E-Mail and Find Your Glass!</p> <p style="text-align: center; margin: 0;">psnyder@cambridgeglass.us</p> <p style="text-align: center; margin: 0;">www.cambridgeglass.us</p> <p style="font-size: small; margin: 0;">When you are searching for Cambridge glass, email your request and it is emailed to all members and dealers. P. Snyder, 1500 Edgewood Dr., Circleville, Ohio 43113</p> </div>
<p style="text-align: center;">CRYSTAL LADY 1817 Vinton St. Omaha, NE 68108 Bill, Joann and Marcie Hagerty 402-699-0422</p> <p>Specializing in Elegant Glass & Collectibles www.crystalladyantiques.com</p>	<div style="border: 2px solid red; padding: 10px; text-align: center;"> <p style="font-size: large; margin: 0;">Our House Antiques</p> <p style="margin: 0;">Linda and David Adams Las Vegas, Nevada 702-302-8282</p> <p style="font-size: small; margin: 0;"><i>Shows and Mail Order only</i></p> <p style="font-size: small; margin: 0;">email: David@OurHouseAntiques.com</p> <p style="font-size: small; margin: 0;">www.OurHouseAntiques.com</p> </div>

National Cambridge Collectors, Inc.
PO Box 416
Cambridge OH 43725
email: editor@cambridgeglass.org
website: www.cambridgeglass.org



Friends of Cambridge – Annual Fund

NCC exists through member giving using an Annual Fund system to raise operating funds and to ensure the preservation of Cambridge glass for future enthusiasts. The Annual Fund uses a common member “renewal” date and NCC sends out Annual Fund materials to everyone once a year. There are no monthly reminders or monthly renewal dates. The Annual Fund is NCC's primary means of support and all Annual Fund gift recognition levels are per household and include membership for all adults within the household. Additionally, each household will receive a subscription to the Crystal Ball newsletter, unlimited admissions to the museum, and rights to vote in elections for the Board of Directors. Multiple households at the same address are welcomed. NCC is a 501(c)(3) organization and Annual Fund gifts are allowed as a tax deduction under Section 170 of the Internal Revenue Code.

Levels of Membership

Patron	\$35
Benefactor - Century	\$100
Benefactor - Mardi Gras	\$200
Benefactor - Japonica	\$500
President's Circle	\$1,000

President's Circle includes Convention registration for two members in the household and one copy of any new NCC publications.

The National Museum of Cambridge Glass

Located at 136 S. 9th Street
in downtown Cambridge
Wed-Sat 9-4
Sunday 12-4

