



# Cambridge Crystal Ball

Published by the National Cambridge Collectors, Inc. as a resource which informs, invites and inspires people to encourage the continued preservation of the glass produced by the Cambridge Glass Company of Cambridge, Ohio for future generations.

Issue No. 535

ISSN 2474-5987

February 2020

## *Hearts for Valentine's Day*

Carmen is the typical color for Valentine's Day. However, what other pieces you should also include on your table?

And of course, you might put that single rose into a bud vase decorated with etch #743, Four Hearts.

Make sure your stemware includes the 3795 Sweetheart line, which was made 1951-1953.



Of course, you need to include a heart shaped relish dish from either the Nearcut Marjorie line or the Caprice line.



### *What's Inside*

Hearts for Valentine's Day .....	1
President's Message .....	3
2020 Museum Planning, Projects & Visitors! ..	4
Near Cut Mine Info & Photo Discovered .....	7
Crystal Ball Index 2003 - 2019.....	8
March 2020 Benefit Auction Details.....	12
March 2020 Auction Preview in Photos .....	13
Minutes of the Fall Membership Meeting ....	17
eBay Report .....	18
Cambridge Glass and the Holidays.....	20

# National Cambridge Collectors, Inc.

PO Box 416 Cambridge, OH 43725-0416

## Board of Directors

	2020	
Cindy Arent	Larry Everett	Sharon Miller
	2021	
Ken Filippini	Freeman Moore	Lyle Stemen
	2022	
Julie Buffenbarger	David Rankin	Frank Wollenhaupt
	2023	
Nancy Misel	Lindy Thaxton	Lynn Welker

## Officers

President	Freeman Moore
Vice-President	Ken Filippini
Secretary	Nancy Misel
Treasurer	Lindy Thaxton
Sergeant-at-Arms	Larry Everett

Director of Strategic Planning	Ken Filippini
Director of Human Resources	David Ray
Chair, Endowment Committee	David Rankin

## MEMBERSHIP QUESTIONS?

Please send address changes to:

Membership - NCC

PO Box 416

Cambridge, OH 43725-0416

or by e-mail to:

[membership@cambridgeglass.org](mailto:membership@cambridgeglass.org)

## Member Services

### Vice President

Member Relations  
Convention  
Member Social Media  
Glass Dash  
Glass Show  
Study Groups  
Webmaster

Freeman Moore (acting)  
Freeman Moore, Membership Database  
Larry & Susan Everett  
Alex Citron & David Ray  
Larry Everett & Frank Wollenhaupt  
David Ray, Mike Strebler, Jack Thompson  
Jeannie Moore, Study Group Coordinator  
David Adams

## Development

### Vice President

Campaigns  
  
Events  
  
Projects  
Publicity

Julie Buffenbarger  
Ken & Jane Filippini, Annual Fund Directors  
Larry Everett, Director of the Heritage Society  
Bev & Will Acord,  
Lynn Welker, Auction Managers  
Susan Everett & Frank Wollenhaupt, Jewelry  
Convention: Jonathan Fuhrman

## Education

### Vice President

Crystal Ball  
Publications  
Media Productions  
Research

Larry Everett  
Freeman Moore, Executive Editor  
Mark Nye, Director of Publications  
Dave Rankin, Director of Media Productions  
Mark Nye, Archivist

## Museum

### Vice President

Public Operations  
Facilities & Grounds  
  
Inventory Management  
Collections  
Museum Gift Shop  
  
Archivist  
Museum Social Media  
Community Relations

Cindy Arent  
Lindy Thaxton, Director of Public Operations  
Cindy Arent,  
Joe Miller,  
Lindy Thaxton  
Lindy Thaxton, Director of Inventory Management  
Lynn Welker, Director of Collections  
Cindy Arent, Gift Shop Manager  
Lynn Welker, Gift Shop Manager  
Mark Nye, Director of Archives  
Cindy Arent, Director  
Cindy Arent

## Administration

### Vice President

Accounting & Finance

Lindy Thaxton  
Lisa Neilson, Office Manager



## CONTACT US

NCC Business Manager

Phone: 740 432-4245

[businessmanager@cambridgeglass.org](mailto:businessmanager@cambridgeglass.org)



Freeman Moore, President

e-mail: [president@cambridgeglass.org](mailto:president@cambridgeglass.org)

Nancy Misel, Secretary

e-mail: [secretary@cambridgeglass.org](mailto:secretary@cambridgeglass.org)

## Heritage Society

*Ensuring the preservation mission of the NCC through planned giving and estate bequests.*

Members of The Heritage Society are those who have included the NCC in their wills or estate plans, thus providing the organization with a secure future.

The mission of The Heritage Society is to foster smart estate planning and to assure that NCC is not forgotten as an important beneficiary. Any pledge is meaningful and appreciated.

All Cambridge collectors - both current and future - will benefit from, and be grateful for your support.

Let us know how we can help with your future plans.

### Museum:

National Museum of Cambridge Glass



Like us on Facebook

Member: Cambridge Glass/National Cambridge Collectors

NCC Website: [www.CambridgeGlass.org](http://www.CambridgeGlass.org)

Miami Valley Study Group Website: [www.mvsg.org](http://www.mvsg.org)



# PRESIDENT'S MESSAGE

## *An Exciting Auction*

Auction Directors, Bev and Will Acord and Lynn Welker, with help from volunteers, selected, identified, photographed, and cataloged 405 lots for the March Auction. Many beautiful pieces of Cambridge glass are being offered for sale, and I anticipate fierce bidding on several items.

My wife Jeannie and I separately review the listing and photographs of each item that are posted on the NCC website. We then talk over the differences between our two lists. Sometimes one of us saw a unique decoration, or maybe a piece to complement our collection. After studying the auction listing, the number of items highlighted on the auction catalog will likely far exceed our budget. Although we have collected Cambridge glass for more than 30 years, we are amazed by the beauty and quality of the glassware produced by the Cambridge Glass Company. Sometimes, we agree upon bidding on an item. Other times, we agree that we just need to see the item in person to appreciate it. The pictures are good, but seeing all that sparkling glass on display is a sight you need to experience. Narrowing the number of items on which to bid will be difficult.

This year's auction has items to tempt every collector. You'll find Crown Tuscan pieces with gold encrusted etching, gold trimmed, enamel decorated, and Charleton decorated. If you are looking for a particular statuesque stemware item, you'll find a nice assortment. If you are a cordial collector, you should have fun as I counted over 25 cordials in the auction. If you are looking for bigger items, check out item #234, a Caprice punch bowl. And of course, the selection of colors available is outstanding.

It is always impressive to see some rare items in the auction, even if they don't into your collection. Check out item #80, Stratford 102 Experimental

Green Opalescent Stratford Urn Salt. Some Rose Point collector will be happy to add a #980 covered cheese to their collection, or maybe they need the #944 sugar. Swan collectors will swoon over the #1043 8 ½" Moonlight swan. Another unusual piece is the #260 Ivory 9" tall 6½" diameter tall comport, blown. If you are unable to attend the March auction in person, make sure to submit your absentee bids as described in the January issue.

Engage with other collectors on social media. Facebook™ is the most popular site. If you use other social media, let us know. Cindy Arent shares information about the latest happenings at the museum. Over 2000 people like and follow the museum Facebook page. Obviously, she is engaging with a lot of interested people, but who are not members of NCC. David Ray works on the member focused Facebook page and shares information such as "Cambridge 101" and explaining basic glass concepts. He is up to nearly 500 followers. It would be great if we could capture some of those followers to join us and be a Friend of Cambridge.

### *What's coming?*

I will be attending two glass shows in February and will have information about NCC. It is one opportunity to talk with interested individuals and explain the benefits of supporting NCC. Let me know if you need information to share with places that you visit.

What's on your Cambridge "wish list" for this year and beyond, and how can we help?

Sincerely,

Freeman Moore  
[president@cambridgeglass.org](mailto:president@cambridgeglass.org)



## 2020 Museum Planning, Projects & Visitors!

By Cindy Arent

We always stress that Cambridge Glass should be used. During late December, I asked followers of the Museum Facebook page to share photos of how they used Cambridge Glass when decorating their home or entertaining. I would like to thank the members that sent their festive photos. They included; Lynn Cartee, Zak McCamey, Tim & Chris Smith, Kay Larsson, Amanda Jones Taylor, Roberta Bennett, Bud & Anna Walker, Joey Pirl, Tim & Nancy Crose, Cindy Brock Burke and Julie Davey. Their photos received many “Likes and Comments” and were enjoyed by hundreds of people. What a great way to share our love of Cambridge Glass!

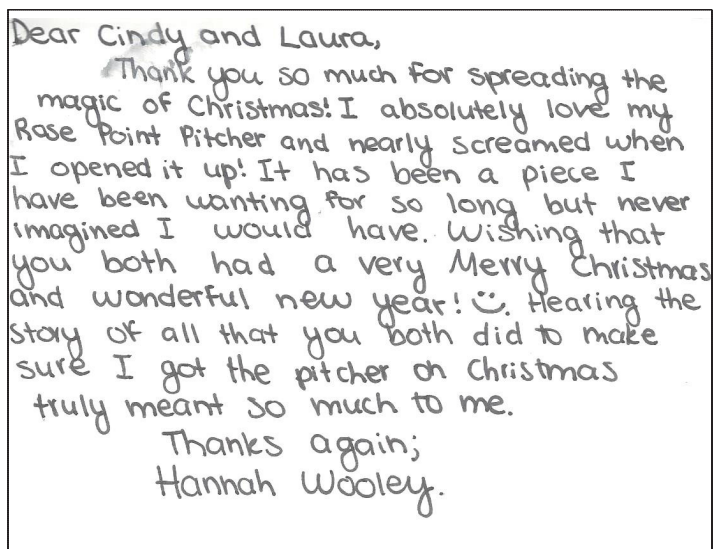
On January 5<sup>th</sup> the Dickens Victorian Village scenes were moved back to the warehouse where work will begin immediately in preparation for the 2020 season. It will be the 15<sup>th</sup> year for the popular project. NCC has greatly benefitted from the success of Dickens Victorian Village through increased visibility, museum admissions and gift shop sales. For instance, in November/December we had 23 bus groups and April through October we had 12 bus groups. During November and December the museum was open Friday and Saturday from Noon – 4:00, plus additional hours for bus groups staffed by volunteers. The results for 2019 were:

April – October: Admissions \$6,500 and November – December \$4,052  
April – October: Gift Shop \$24,767 and November – December \$9,677

As you can see, we do quite well on admissions and gift shop sales during the holiday season.

Saturday, December 21 was the last day the museum was open for the season. A call came in around noon from a woman in Michigan looking for a specific Rose Point pitcher as a Christmas gift for her daughter. We thought she was describing the Doulton Pitcher but had to text a photo to her to be sure. It was the correct pitcher and she wanted to purchase the piece. However, it needed to arrive in Michigan by Christmas Eve. The Cambridge Post Office and Cambridge Packaging were both closing at 1:00. A call was made to Cambridge Packaging and they said they would wait until we could get the box to them. The Rose Point Doulton pitcher

was quickly packed and a mad dash was made down Southgate Parkway. In order to arrive in Michigan by Tuesday (Christmas Eve), the box needed to be shipped UPS Air. As soon as the box was checked in at Cambridge Packaging, they left with the package to find the UPS driver before he left Cambridge. I checked UPS tracking on Monday morning and it was to be delivered to the Michigan address that afternoon. I notified the buyer and she was thrilled and very appreciative! After Christmas we received the following thank you note from her daughter:



Dear Cindy and Laura,  
Thank you so much for spreading the magic of Christmas! I absolutely love my Rose Point Pitcher and nearly screamed when I opened it up! It has been a piece I have been wanting for so long but never imagined I would have. Wishing that you both had a very Merry Christmas and wonderful new year! 😊. Hearing the story of all that you both did to make sure I got the pitcher on Christmas truly meant so much to me.  
Thanks again;  
Hannah Wooley.

The 2020 Museum theme will be the Roaring 20s & Prohibition. 2020 marks the 100<sup>th</sup> year since the enactment of the 18<sup>th</sup> Amendment and Prohibition. The 1920s were the most prolific years for The Cambridge Glass Company and museum visitors will experience how the Roaring 20s affected the glasshouse and the City of Cambridge, Ohio. The installation of the new “Speakeasy” exhibit in the Museum’s Education Center has begun; *Catch the Spirit of the Roaring 20s!* The early 1900s kitchen display has been removed and the 1920s exhibit has taken its place. Planning for the new exhibit began last summer. Pieces of furniture that will be used have a link to people who worked at The Cambridge Glass Company. In the Roaring Twenties, a surging economy created an era of mass consumerism!

We have been working closely with the Cambridge/ Guernsey County Visitors & Convention Bureau to develop a group tour profile sheet that will



include one or multiple day packages for group tour companies. Area attractions, hotels and restaurants will also be options as tour operators plan their group's itinerary. This group tour will begin at the National Museum of Cambridge Glass.

The Museum will be open special hours during the March Auction: Friday, March 13 from 10 a.m. to 4:00 p.m. and Saturday, March 14 from 2:00 p.m. – 5:00 p.m.

As always, thank you all for your support and I hope to see you at the March Auction! ■

In late December after the museum closed, the Early 1900s Kitchen Display in the Education Center was removed and installation of the new Roaring 20s/ Prohibition exhibit began. Photo boards were placed in the windows and they fit perfectly. Cindy Arent is shown putting up the new rods and curtains. We love the 3M™ Command Hooks, no damage to the museum walls.



NCC member Melinda Butler and City of Cambridge Mayor Tom Orr stopped by the museum for a visit in January. They got a sneak peek at the beginning of the new exhibit and enjoyed looking around and shopping!







Zak McCamey always takes beautiful photos to share with us. This year it was “A Crown Tuscan Christmas”. Zak’s photo from 2018 was featured in the 2019 Dickens Victorian Village Visitor’s Guide. Thank you, Zak!



This small shelf was made by Dr. Earl Conaway for his daughter Sally Slattery. Dr. Conaway worked at the Cambridge Glass Company as a boy. His father, Milton Conaway moved the family to Cambridge to work at the glasshouse in the early 1900s. The shelf is part of the new Roaring 20s exhibit.



This photo was taken the day we cleaned the Ebony showcase at the museum and posted on the Museum Facebook page. It reached over 7,000 people in less than 24 hours.



“The Glass Blower at Work” platform scene, sponsored by the National Cambridge Collectors, Inc. was carried back to its position in the Dickens Victorian Village warehouse by members of the Cambridge High School Football Team. The scene includes a finishing bench making it one of the heaviest scenes to carry.





# Oh Happy Day!

## Near Cut Mine Info & Photo Discovered

By Cindy Arent



For those of you who have worked with me, you know that I tend to get very, very excited when additional historical information relating to The Cambridge Glass Company is uncovered.

We have always known that The Cambridge Glass Company owned two coal mines in the early years. However, we only vaguely knew where one of them was located through information from a local historian.

On a recent visit to the Guernsey County History Museum, Curator Judy Clay asked me if I knew that The Cambridge Glass Company owned a coal mine called the Near Cut. I told Judy we had been searching for information, a location and a photo to incorporate into our Time Travelers programing for many years.

The following information was shared, courtesy of the Guernsey County History Museum.

### Fri. Oct. 12, 1917

“The Cambridge Glass Co., through President A.J. Bennett, has purchased the mine, equipment and holdings, consisting of 69 acres of coal land, belonging to the Economic Coal Co., located on the National Road, about 4 miles east of Cambridge, and will take charge Tuesday, Oct. 16<sup>th</sup>. The deal for the property was made through M.W. Hutchison, real estate agent, and the consideration was about \$30,000.

The Economic Coal Company was organized by six Cambridge citizens a few years ago and a small coal mine opened. They were successful from the start, being able to dispose of all the coal they could mine. Recently new equipment was purchased and installed and a switch was put in from the B & O railroad.

During the past year the output of the mine has been from 175

to 200 tons per day, and it is understood that the new owners expect to increase this to 250 tons per day, by the installation of additional machinery.

The stockholders of the Economic Coal Co. were J.M. Ray, president and general manager; C.B. McCoy, secretary; J.E. Adison, treasurer; T.W. Tobin, mine superintendent; J.W. Amos and Harry Addison.

The Cambridge Glass Co. purchased the mine in order to provide coal for the factory, and in addition will have coal for sale.”

If you have been to Cambridge and eaten at the Bear’s Den Restaurant on Route 40 east of Cambridge, the Near Cut Mine was located off the left side of the road about half way to the restaurant in an area known locally as Four Mile Hill. The actual location is near an old strip mine pit at the intersection of Old National Road and Endley Road.

Anyone up for a road trip during the June convention? ■



This photo was taken at the Near Cut Mine owned by The Cambridge Glass Company. The photo is dated 1920 and courtesy of the Guernsey County History Museum.



# Crystal Ball

## Table of Contents

### January 2003 thru December 2019

### INTRODUCTION

In 1979, an index to the first 68 issues of the Cambridge Crystal Ball, compiled by Luene B. Brandt, was published for current members of the National Cambridge Collectors, Inc. It, along with all back issues of the publication, remains available to members.

A follow up to that index was published in 1992. It provided a table of contents covering January 1979 – June 1992. Another index was published in August 2016 covering July 1992 to December 2002.

This listing continues in the style of the previous table of contents. While not an index in the research nomenclature, it provides, in chronological order, a listing of articles dealing with all aspects of the Cambridge Glass Co. published in the Cambridge Crystal Ball during the

period January 2003 - December 2019. Thus, this is a table of contents for issues #357 through #533. Articles dealing with club functions, presidential messages and club news are not included.

For each article, the issue date, issue number, the subject or title of the article and the author's last name is provided. Full names of the authors are provided at the end. No attempt was made to list multiple topics covered in some articles; for example, articles on colors, vases, etc., or when more than one color of item was discussed in article.

Thank you  
 Editor, NCC Crystal Ball  
 February 2020

Issue Date	Issue No	Author	Subject or Title	Issue Date	Issue No	Author	Subject or Title
Jan 2003	357	Nye	A Cambridge Glossary, Circa 1934	Sep 2003	365	Hansen	The Cambridge Colors: Amethyst & Mulberry
Feb 2003	358	Hansen	The Cambridge Colors: Crown Tuscan	Oct 2003	366	Alexander	The Cambridge Colors: A Useful Tool
Mar 2003	359	Hansen	The Cambridge Colors: Carmen	Oct 2003	366	Nye	Cambridge Showrooms
Apr 2003	360	Otten	Got Milk?	Oct 2003	366		Where's the Glass?
May 2003	361	Cole	The Museum at Replacements, Ltd.	Nov 2003	367	Basaraba	Collecting Cambridge Glass in Canada
Jun 2003	362	Ray	Cambridge Epergnes and Their Parts	Nov 2003	367	Hansen	The Cambridge Colors: Forest Green
Jun 2003	362	Hansen	The Cambridge Colors: Royal Blue	Nov 2003	367	Cole	Figural Flower Frogs, Part I
Jul 2003	363	Hansen	The Cambridge Colors: Heatherbloom	Dec 2003	368	Cole	Figural Flower Frogs, Part II
Jul 2003	363	Robinson	Cambridge Flower Blocks	Feb 2004	370	Hansen	Uranium Glass
Aug 2003	364	Otten	What Are You Doing in There?	Mar 2004	371	Cole	Figural Flower Frogs - Part III
Sep 2003	365	Hansen	Can Halogen Lighting Change the Color of Glass?	Jun 2004	374	Otten	That Touch of Elegance
				Jul 2004	375	Otten	Now, This Takes the Cake
				Jul 2004	375	Nye	Cambridge Trademarks - Part I

<b>Issue Date</b>	<b>Issue No</b>	<b>Author</b>	<b>Subject or Title</b>	<b>Issue Date</b>	<b>Issue No</b>	<b>Author</b>	<b>Subject or Title</b>
Aug 2004	376	Hansen	The Avocado Code	Apr 2008	417	Nye	The Early History of Cambridge Etchings
Sep 2004	377	Payne	The Candlelight Engravings	May 2008	418	Nye	Otto C. Graham, Sales Manager
Sep 2004	377	Nye	Cambridge Trademarks - Part II	May 2008	418	Wollenhaupt,V	The Basket
Oct 2004	378	Nye	Cambridge Trademarks & Logos - Part III	Jun 2008	419	Nye	Enter National Advertising
Dec 2004	378	Cole,et al	Nude Stem Color Chart	Aug 2008	420	Wollenhaupt,F	Cambridge Mardi Gras
Nov 2004	379	Citron	Sick Glass Can Be Healed	Aug 2008	420	Filippini	Carmen and Gold
Nov 2004	379	Nye	January 1949: The Way it Was	Oct 2008	422	Welker	Reproduction of the 10½" Swan
Apr 2005	384	Otten	The Wild Side of Cambridge Glass	Nov/Dec 2008	423	Nye	Bits & Pieces From 1934
Jun 2005	386	Otten	The Hard Luck Heron	Feb 2009	425	Wollenhaupt,F	Photos from the First NCC Convention
Sep 2005	388	Arent	The Viola A. Roth Bequest	Feb 2009	425	Finley	Let's Talk Turkey
Sep 2005	388	Hansen	The Swan Punch Bowl ... and other Cambridge Swans	Feb 2009	425	Nye	Lamps, Lamps & Lamps
Oct 2005	389	Hansen	Carmen ... Revisited	Mar 2009	426	Fogg	1954: Cambridge Glass Company Sold
Nov 2005	390	Adams,D	Similarities Cause Confusion For Beginning Collectors	Mar 2009	426	Gary	The Elegance Of Chantilly
Mar 2006	394	Otten	Oh Britannia!	Mar 2009	426	Moore,JF	Jugs, Jugs, Everywhere
Apr 2006	395	Citron	The Keyhole	Jun/Jul 2009	429	Wollenhaupt,F	Cambridge Laboratory Glass
Jun/Jul 2006	397	Dufft	Farber Glass Inserts	Aug 2009	430	Thompson,EJ	What About Elaine?
Jun/Jul 2006	397	Adams,D	A Fenton-Cambridge Connection	Aug 2009	430	Nye	Crown Tuscan
Sep 2006	399	Citron	Discovering Chihuly	Oct 2009	432	Wollenhaupt,F	I've Got Time
Oct 2006	400	Adams,L.	The Next Generation	Oct 2009	432	Nye	Caprice Update
Jan 2007	403	Weinman	Silver, Gold & Platinum Decorations on Cambridge Glass	Feb 2010	435	Rankin	Tips for Photographing Glass
Mar 2007	405	Bredengerd	National Glass Collection at Cambridge Museum	Feb 2010	435	Ray	Shades of Green
Apr 2007	406	Courter	Hidden From Sight for 75 Years	Feb 2010	435	Nye	Smokers Items
Apr 2007	406	Wollenhaupt,V	Decalware	Mar 2010	436	Austin	#2 / #19117 V-Handled Cambridge Sandwich Plate
Aug 2007	409	Wyrick	Silver Overlay	Apr 2010	437	Wollenhaupt,F	Cambridge Titanic Candy Dispenser
Aug 2007	409	Klemko	La-Flo Cut Glass, Cambridge, Ohio	Apr 2010	437	Nye&Adams	Cut Nude Stemware ALERT
Aug 2007	410	Nettell	Tony Nettell Goes to the NDGA Convention	Aug 2010	440	Wolk	Farber Brothers-Krome Kraft ...
Feb 2008	415	Ray	Etchings by the Cambridge Glass Company	Aug 2010	440	Wollenhaupt,F	The making of a Nude Stem
Feb 2008	415	Strebler	Yukon Etch	Aug 2010	440	Nye	Cambridge Perfume Bottles
Feb 2008	415	Rieker	A Passion I Have (Cambridge Nudes)	Sep 2010	441	Wollenhaupt,F	Yellow-Green Vaseline" - BAH!
Mar 2008	416	Coe	Defining Elegant Glass	Sep 2010	441	Nye	Previously Unknown Cambridge Catalog Page
				Oct 2010	442	Felmeth & Lamica	Cambridge Scottie Decorated Glassware

<b>Issue Date</b>	<b>Issue No</b>	<b>Author</b>	<b>Subject or Title</b>	<b>Issue Date</b>	<b>Issue No</b>	<b>Author</b>	<b>Subject or Title</b>
Oct 2010	442	Hansen	Pomona Green was indeed the Cambridge name for "Avocado"	Feb 2014	475	Hansen	Opaque Colors from the 1920s in the Limelight at November 2013 Meeting
Oct 2010	442	Nye	1930 Pittsburgh Exhibit	Mar 2014	476	Nye	A Look Back in Time 1931
Jan 2011	444	Nye	Cambridge Perfume Bottles II	May 2014	478	Nye	Defining Glass Terms - Part II
Feb 2011	445	Ray	Epergnes and Their Parts - Part I	Jun/Jul 2014	479	Nye	Defining Glass Terms - Part III
Feb 2011	445	Nye	Patents	Aug 2014	480	Cotter	The Long & Bumpy Road: American Glass History
May 2011	448	Nye	Cambridge Laboratory Glassware Line	Sep 2014	481	Alexander	The Elusive and Colorful World of Portia
Aug 2011	450	Wollenhaupt,F	Memories ... All I have are Memories	Sep 2014	481	Thompson,J	The 1338 Candlestick
Sep 2011	451	Nye	A Week at the Cambridge Factory - Part I	Oct 2014	482	Farlow	The Marjorie Etching
Oct 2011	452	Nye	A Week at the Cambridge Factory - Part II	Nov/Dec 2014	483	Welker	The Gloria Etching
Nov 2011	453	Nye	A Look Back In Time Part I	Jan 2015	484	Thompson,EJ	The Elaine Etching
Jan 2012	454	Nye	A Look Back In Time Part II	Jan 2015	484	Nye	A Look Back in Time 1932
Feb 2012	455	Swarts	Knowing Your Bridge Hounds	Feb 2015	485	Berry	The Diane Etching
Apr 2012	457	Hansen	It May Not Be "Pomona" in More Ways than One	Mar 2015	486	Allen&Cooper	Gold Encrusted Minerva
Aug 2012	460	Ray	Violet, a Mystery Color	Jun/Jul 2015	489	Nye	A Look Back in Time 1933
Aug 2012	460	Yergensen	Sugars & Creamers	Sep 2015	491	Thompson,J	Ram's Head
Oct 2012	462	Small	Hand Made - What It means	Oct 2015	492	Thompson,J	The 1402 Lazy Susan
Oct 2012	462	Retzloff	Defining the Cambridge Gyro Optic Tilt Ball Pitcher	Oct 2015	492	Nye	From the Archives - 1940
Oct 2012	462	Nye	A Look Back In Time: January 1939 The Martha Punch Bowl	Oct 2015	492	Nye	Cambridge Square
Nov/Dec 2012	463	Wollenhaupt,F	More on Candy Containers	Oct 2015	492	Nye	A Look Back in Time 1934
Nov/Dec 2012	463	Hansen	Deauville - Stemware with the Same Design in its Stem and its Etching	Jan 2016	494	Nye	From the Archives: Sears Roebuck & Co
Aug 2013	470	Nye	A Look Back in Time: 3600 2 pc cocktail icer	Feb 2016	495	Nye	From the Archives: Last Production
Sep 2013	471	Thompson,J	The 1402 Tally Ho Lid	Mar 2016	496	Nye	From the Archives: 1948
Sep 2013	471	Nicol	A Cambridge Amber Buddha Flower Frog and the Barrel-Making Shop at the Cambridge Glass Company	Sep 2016	501	Nye	A Look Back in Time 1935
Sep 2013	471	Hansen	Carmen - a Precious Ruby-Colored Glass	Nov/Dec 2016	503	Maves	The Rock Crystal Engraving #907, Neo Classic
				Nov/Dec 2016	503	Nye	From the Archives: Circular Letter #352
				Feb 2017	505	Thompson,J	1402/105 Comport Identified
				Feb 2017	505		Sweet Potato Vases
				Mar 2017	506	Nye	From the Archives: Circular Letter #99
				Mar 2017	506		Everglade Display
				Apr 2017	507	Nye	A Look Back in Time 1936
				Apr 2017	507		Crown of the Andes - Update
				Jun/Jul 2017	509	Nye	From the Archives: Circular Letter #65
				Aug 2017	510	Nye	From the Archives: Circular Letter #79



Issue Date	Issue No	Author	Subject or Title	Issue Date	Issue No	Author	Subject or Title
Aug 2017	510	Nye	From the Archives: Sept 1948	Mar 2019	526	Nye	Apple Blossom
Sep 2017	511	Nye	From the Archives: Elm Tree Mine	Mar 2019	526	Ray	Mold Variations Within the Caprice Line
Oct 2017	512	Moore	Lemon Squeezers - Revisited	Apr 2019	527	Thompson,J	More Uncatalogued Candlesticks and Candelabra
Oct 2017	512	Nye	A Look Back in Time 1937	May 2019	528	Thompson,J	The #627 Candlestick
Nov/Dec 2017	513	Nye	From the Archives: Circular Letter #53	Jun 2019	529	Nye	Bits & Pieces From the "Special Order Book".
Nov/Dec 2017	513		Pristine 496 Candlestick	Aug 2019	530	Sandler	Cambridge Ivy Balls
Jan 2018	514	Ray	European Influence on the Everglade Line	Aug 2019	530	Moore	Engraving #1081, Rondo
Feb 2018	515	Nye	From the Archives: Gold Krystol	Sep 2019	531	Nye	From the Archives: Cambridge Glass Co and the Great Depression.
Feb 2018	515	Nye	A Look Back in Time 1938	Sep 2019	531	Nye	From the Archives: Bexley vs Bexley
Mar 2018	516	Smith	NEARCUT Patterns (reprint)	Oct 2019	532	Rankin	The Life of Arthur James Bennett.
Mar 2018	516	Smith	Bunny Boxes (reprint)	Nov/Dec 2019	533	Nye	From the Archives: CGL April 7, 1924
Jun/Jul 2018	519	Nye	Hugh McManus: The Maker of the First Piece of Cambridge Glass	Nov/Dec 2019	533	Nye	From the Archives: CGL October 26, 1925
Jun/Jul 2018	519	Nye	From the Archives: National Glass Budget				
Sep 2018	521	Moore,JF	A Variety of Dinner Plates				
Nov/Dec 2018	523	Nye	A Look Back in Time 1939				
Feb 2019	525		Pristine 101 Cocktail Shakers.				

## AUTHOR IDENTIFICATION

Adams, David  
Adams, Linda  
Alexander, Bill  
Allen, Brad & Cooper, Gene  
Arent, Cindy  
Austin, Inez  
Basaraba, Dale  
Berry, Hedi & Brent  
Bredengerd, Linda  
Citron, Alex  
Coe, Debbie & Randy  
Cole, Shelley  
Cole, Shelley & Citron, Alex & Welker, Lynn  
Cotter, Tom  
Courter, Bill  
Dufft, Bill  
Farlow, Marjorie

Felmeth, Janet & Lamica, Mary  
Filippini, Ken  
Finley, Jim & Nancy  
Fogg, George  
Gary, Diane  
Hansen, Les  
Klemko, Helen  
Maves, John & Moore, Freeman  
Moore, Freeman  
Moore, Jeannie & Freeman  
Nettell, Tony  
Nicol, Ken  
Nye, Mark  
Nye, Mark & Adams, David  
Otten, Georgia  
Payne, Gary  
Rankin, David  
Ray, David

Retzloff, Jim  
Rieker, Squeek  
Robinson, Robert  
Sandler, Stuart  
Small, Dave  
Smith, Phyllis  
Strebler, Mike  
Swarts, Darren  
Thompson, Elaine & Jack  
Thompson, Jack  
Weinman, Lorraine  
Welker, Lynn  
Wolk, Alex  
Wollenhaupt, Frank  
Wollenhaupt, Vicki  
Wyrick, Barbara  
Yergensen, Shelly

# March 2020 Benefit Auction Details

The detailed auction listing and information was printed in the January *Crystal Ball*.

## **Date/Time:**

Saturday March 14, 2020, preview at 8:30 am with auction starting at 9:30 am. The Spring Membership meeting will be Friday evening at 7:30 pm.

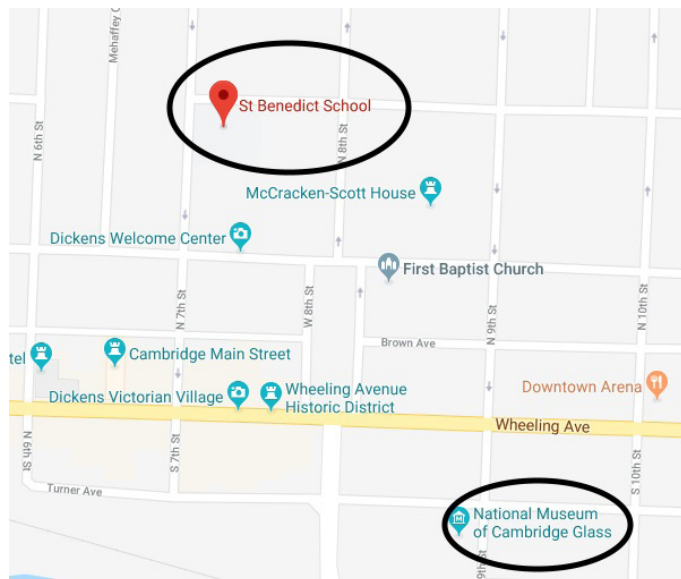
## **Location:**

St. Benedict School Gymnasium, 220 N 7th St, Cambridge, Ohio. This is the same location where the Glass Dash is held in June. You might want to bring a cushion for your chair.

## **Absentee Bids:**

Anyone wishing to place an absentee bid, may do so by mailing their bids to the Auction Committee. All bids must be received by Thursday March 12 prior to the auction to be eligible, so please allow enough time for the postal service to do its thing.

Total cost = Final auction price + 5% transaction fee + cost of shipping.



## Lunch Option for Auction Attendees

**Back by popular demand** are Theo's scrumptious boxed lunches, delivered right to the auction in time for the lunch break. So if you don't want to hassle running out to get something and/or want a nice healthy alternative to fast food, we've got it for you. Tax and gratuity are all included in the purchase price.

**Ordering:** A Theo's representative will be available from 8:30 AM to 9:30 AM on Saturday, day of the auction, to take everyone's orders. You must have cash or check and pay at time of order. They will not be able to take credit cards. Fill out one of their order forms when you arrive Saturday morning.

## **Prepared Boxed Meals:**

### **Sandwiches: \$10.00**

*All sandwich boxed meals include choice of pasta salad, broccoli raisin salad or coleslaw, chips, cookie and one bottled water or can of soda. Mustard, Mayo & Horseradish sauce will be available. Served on the side.*

#### **Roast Beef & Cheddar:**

on Cracked Black Pepper Bread with lettuce, tomato

#### **Chicken Salad Croissant:**

with lettuce and tomato

#### **Ham & Swiss on Wheat:**

with lettuce, tomato

#### **Turkey, Bacon, & Mozzarella:**

Whole Wheat with lettuce, tomato

#### **Chicken, Bacon, Ranch Wrap:**

with lettuce, tomato

### **Salads: \$10.00**

*All salad boxed meals come with bread, cookie and one bottled water or can of soda.*

Choice of dressing: Ranch, Ceasar, Greek, Italian, French or White Balsamic Vinegar

#### **1) Chicken Caesar Salad**

#### **2) Chef Salad**

#### **3) Chicken Greek Salad**

#### **4) Southwest Chicken Salad**

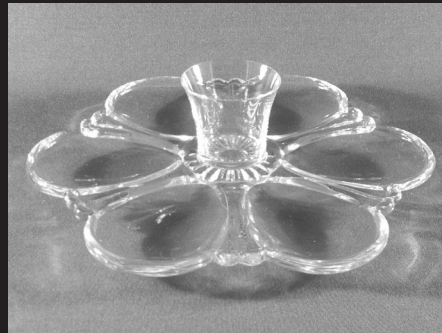
### **Additions:**

Cup of Soup: \$3.00

[www.theorestaurant.us](http://www.theorestaurant.us)  
(Menu subject to change)



*A Preview of some of the spectacular glass offered in this year's NCC Benefit Auction - March 14, 2020  
Go to the NCC website [www.cambridgeglass.org](http://www.cambridgeglass.org) for a link to individual photos*



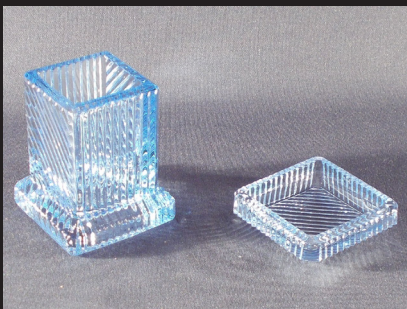


*Auction Preview ..... continued*





*Auction Preview ..... continued*





*Auction Preview ..... continued*





**National Cambridge Collectors, Inc.**  
**Minutes of the October 19, 2019 Fall Meeting**

President Freeman Moore called the 2019 Fall Meeting of the National Cambridge Collectors, Inc. to order on Saturday, October 19, 2019 at 6:32 PM. The meeting was held at Francis Family Restaurant.

The minutes of the June 26, 2019 Meeting were published in the September 2019 Crystal Ball. No changes or corrections were requested by the membership. Lynn Welker moved to suspend reading of the minutes. Frank Wollenhaupt seconded the motion. Suspension was approved by acclamation. Scott Adams moved to approve the minutes as printed. Lindy Thaxton seconded the motion and the minutes were approved by acclamation.

**Treasurer's report:**

President Freeman Moore presented the Treasurer's report. As of September 30, 2019:

- » Cash on Hand
  - PNC Bank Accounts \$144,711.01
  - PayPal \$964.11
  - Total Cash Funds \$145,675.12
- » Endowment Fund \$533,066.16

Cash on hand is higher than anticipated. David Ray asked if some of the excess cash will be moved to the Endowment Fund. Freeman Moore stated that this would be a topic at the next Board of Directors meeting.

**Reports:**

**Administration** – No report

**Development** – No report

**Education** - David Ray has begun posting basic information for beginning Cambridge collectors on the NCC Facebook page. His goal is to post at least once a month and he will be posting information and photos from tonight's educational program. He encouraged those on Facebook to check out the NCC page. Larry Everett reported that information is still being gathered on the details of EBook publishing.

**Membership** – Freeman Moore reported that the 2019 Annual Fund is currently about \$800 behind the 2018 numbers. Freeman Moore reported as an FYI that as of October 1, 2019, eBay is charging sales tax if memberships are purchased through the site. Leadership will be investigating ways to address this issue.

**Museum** - Cindy Arent reported that the regular season will end October 31, 2019 and the holiday season will begin on November 1st. Hours will be 12-4PM Friday and Saturday. There are currently 27 scheduled coach tours for the holidays. The dining room is now decorated with Peach-blo. As of today, the museum has recruited several new volunteers/tour guides. The Museum Facebook page now has 2100 "likes" and even more followers. There will be a Vintage Appraisal event with Lynn Welker at the Museum from 1-3PM on November 3, 2019.

**Old Business:** None

**New Business:**

Freeman Moore announced that David Ray, Ken Filippini, and Elaine Thompson will comprise this year's Nominating Committee. They will be developing the slate of candidates for the 2020 Board of Directors Election. David Ray requested that anyone with the time, and interest, to serve on the Board contact a committee member.

Scott Adams requested that the Treasurer's report be presented to the membership as a more detailed report. Another member asked if this information is not printed in the Crystal Ball. Freeman Moore stated that it had been in the publication last year but had not been included this year. He stated that he will take this request to the Board.

Upon hearing no further new business, Jeannie Moore moved to adjourn. This was seconded by Frank Wollenhaupt, approved by those present, and the meeting adjourned.

Respectfully submitted,  
Nancy Misel  
Secretary

Welcome to the eBay Report. This column features Cambridge glass items that sold on eBay circa mid-December 2019 to mid-January, 2020. Selling prices have been rounded to the nearest dollar. If no color is mentioned, assume that the piece or part of it being discussed is crystal. Here we go:

Statuesque (Nude Stem) Items

A champagne with Smoke bowl sold for \$145. Is it just me, or is this a size of nude stem that you hardly EVER see in Smoke?



An ashtray with Forest Green top was snuffed out for \$147, while one with a Smoke top wafted away for \$375.



A 7-1/2 inch tall comport in solid Forest Green brought \$154.

A set of six clarets with Carmen bowls sold for \$350.

A set of 5 brandies with Carmen bowls sold for \$800. The seller stated that they had been purchased new by his wife's mother in law ("back in the day," as the kids say now.)



A cocktail with Smoke bowl and crackle finish was offered at \$553, but the auction was "ended by the seller because the item is no longer available." Hmm...

A 7-1/2 inch stem with optic bowl and Apple Blossom etch was listed as a cocktail, and sold for \$1,136. As I look at it, I can't help but think it's either a wine or a claret, but maybe I'm wrong. Readers?



Diane Etching

Historically in this column, the only etched pattern that has merited its own category has been Rose Point. But during this period, so many nice pieces with the Diane etching were offered, I decided it deserved its own category.

A #170 syrup with applied handle and slip-on chrome flip lid poured it on for \$113.



A #1066 footed cigarette with ashtray foot sold for \$130.

A #3400/94 "tilt" covered puff box took a powder for \$188.



A #1297 13 inch vase bloomed at \$190.

A #3400/46 12 ounce cabinet flask took a furtive nip for \$305. By far, this shape is most often seen with Apple Blossom etching than any other. And why is it that Cambridge always fitted this #3400 piece with a #3450 Nautilus stopper? Perhaps they felt that this stopper looked better in a flat-sided, oblong decanter than a spherical 3400 stopper would have.



A #1312 footed cigarette box with Heatherbloom box and lid brought \$432.

A #3400/0 4-toed covered candy in CARMEN with gold encrusted etching sold for \$636. Aside from that vase that is often seen mounted as a small lamp, when, when, WHEN do you see Carmen etched Diane?



A #1321 footed decanter in Forest Green sold for \$671.

Etched Tableware and Stemware



A #838 covered mustard in Light Emerald etched Cleo dabbed it on for \$79. This piece was often paired with the #898 platter with ribs in the well that people commonly call the "asparagus set." The same plate is also shown in Cambridge catalogs with a footed, handled sauce boat. Does anyone know if

the indentation on the asparagus tray portion was different, depending on whether it had to fit the mustard versus the sauce boat?

An Amber #3400/38 80 ounce ball jug etched Gloria, paired with 5 #3135 5-1/2 inch footed tumblers, poured it on for \$345.



Four bidders duked it out for an unusual P-163 side salad plate etched Rose Point. It started at \$100, and closed at an impressive \$610.



A pair of #3400/646 keyhole single candleholders in Heatherbloom with Gloria etching sold for \$150.

### Caprice

A #300 Caprice 6-1/2" claret in Pistachio sold for \$250 in a Buy It Now offering. Pistachio Caprice continues to bring very strong prices.

A #1358/8 epergne consisting of a flat 3-light candleholder, the two-ring arm with the six-petal flower center cup, two peg vases, and two bobeches, brought \$355. All parts were Moonlight Blue, except for the prisms.



A Moonlight Blue Caprice #69 double candelabrum with the original style attached shell bobeches sold for \$425.



### Gold, Silver, and Enamel Decorations

202870612354

A Tally Ho ice bucket with handle and tongs and a silver decoration of a stylized laurel wreath and horizontal stripe with satinized highlights sold for the opening bid of \$30 in an incognito listing.

A Willow Blue Decagon #873 3-piece mayonnaise set consisting of the footed 2-handled comport, underplate and ladle, etched and dark blue enamel-filled Rosalie, got some respect, selling for \$70.



A #3500/59 Gadroon footed, handled mayonnaise with underplate and ladle etched and gold encrusted Minerva sold for \$80 in an incognito Buy It Now listing.

An Ebony #274 10 inch bud vase etched and silver decorated Gloria sold for \$135 on a Buy It Now. It was a self-purchased Christmas gift for a California collector... and no, it wasn't ME.

A silver and glass epergne set consisting of a silver candlestick-type base, a 3-way Cambridge glass arm, 3 silver peg nappies with a gadroon edge, and a peg vase etched Chantilly sold for \$178. The seller failed to mention whether the silver parts were sterling or silver plated.



An advertising lamp made from a #3500/42 13 inch covered urn in Crown Tuscan with gold "Cambridge Glass" and highlights sold for \$300.

### Miscellaneous

Someone got a good deal on a set of 6 Light Emerald Green barrel whiskeys for the #1 Keg set. The seller had offered them several times, until they were discovered, finally selling for \$17. Of course, if the seller hadn't listed them in the category for Ruby glass, he'd have sold them a lot sooner – and probably for more. I. Scratch. My. Head.



Speaking of the keg set, one seller offered only the metal spigot hardware portion for sale. If you like the keg sets, that's a key part that you might want to buy and squirrel away, in case you ever find a set with a missing or damaged spigot.

A #680 vanity set in Peach Blo with the early rendition of Wildflower etching was offered at a \$30 opening bid, or a slightly higher Buy It Now price, in an incognito auction. It ended with no bids, but was then quickly relisted with a \$40 Buy It Now price, and sold.



A pair of #3085 low sherbets in Peach Blo with Light Emerald Green foot galloped off for \$75. The seller called them wines (seriously?) and also stated they were shape #3077. For comparison, the exact same two stems, offered in an incognito auction, brought only \$27. One might think that they were the same two stems, but the correctly-identified stems sold before the two that were not.



An Amber Tally Ho 15 piece punch set with liner plate, ladle and 12 mug-style cups sold for \$250.



A #1126 16 inch "Buffalo Hunt" bowl in satinized Light Emerald Green was hunted down and captured for \$259. I hope the seller has a lovely large Draped Lady in the matching color to match with it.

That's all for now. If you see any interesting Cambridge glass on eBay that you think I should be watching or reporting on, or if you have any other input, feel free to contact me at [LAGlass@pacbell.net](mailto:LAGlass@pacbell.net). I am well aware that I don't catch every interesting listing, especially those that turned up in a category other than Cambridge.

Until next month, happy Cambridge hunting!



## Cambridge Glass and the Holidays

Enjoy these member contributed photos showing how they used some of their glassware during the holidays.



- An "Ohio" table -  
Hull pottery and Cambridge stemware



3500/31 carmen  
candlesticks and bowl

3500 Victory Wreath iced teas with  
Tiffin Melrose Green goblets



Cambridge Square  
and Pristine stems





# For Sale - NCC Books and DVD

Published by NCC • Members receive a 10% discount

TITLE		REGULAR PRICE	MEMBER PRICE
1910 NearCut Catalog Reprint	108 pages, paperback, no price guide	\$14.95	\$13.45
1927-29 Catalog Reprint	66 pages, paperback, no price guide, includes identification guide	\$9.95	\$8.95
1930-34 Catalog Reprint	250 pages, paperback with 2000 price guide	\$14.95	\$13.45
1930-34 Catalog Index	Index for above	\$2.00	\$1.80
1949-53 Catalog Reprint	300 pages, paperback, no price guide	\$19.95	\$17.95
Cambridge Colors II (New)	Hardcover with price guide	\$19.95	\$17.95
Cambridge Rose Point – A Collector’s Guide		\$29.99	\$27.00
Caprice	200 pages, paperback, no price guide	\$19.95	\$17.95
Decorates	136 pages, paperback, no price guide	\$14.95	\$13.45
Etchings (2nd Edition)	102 pages, paperback, no price guide	\$17.95	\$16.15
Etchings, Non-Catalogued	70 pages, paperback, no price guide	\$12.95	\$11.65
Etchings: Blossomtime	26 pages, paperback, no price guide	\$7.95	\$7.15
Etchings: Candlelight	30 pages, paperback, no price guide	\$7.95	\$7.15
Etchings: Chantilly	44 pages, paperback, no price guide	\$7.95	\$7.15
Etchings: Diane	53 pages, paperback, no price guide	\$7.95	\$7.15
Etchings: Elaine	64 pages, paperback, no price guide	\$9.95	\$8.95
Etchings: Portia	57 pages, paperback, no price guide	\$7.95	\$7.15
Etchings: Wildflower	42 pages, paperback, no price guide	\$7.95	\$7.15
Rock Crystal Engravings	119 pages, paperback, no price guide	\$17.95	\$16.15
Rock Crystal Engravings (Listings)	Companion to above; lists all pieces in all patterns	\$9.95	\$8.95
Rock Crystal 1940 Illustrated Catalog & Price List		\$14.95	\$13.45
Rose Point - Second Edition	146 pages, paperback, no price guide	\$19.95	\$17.95
Pharmaceutical Catalog No.8 1915-1920 Reprint	68 pages, paperback, no price guide	\$9.95	\$8.95
Cambridge Arms compendium		\$7.95	\$7.95
1916 General Catalogue		\$13.95	\$13.95
Rose Point Program - DVD (Postage \$3.00)		\$19.95	\$17.95
Caprice Program - DVD (Postage \$3.00)		\$19.95	\$17.95

## How to Order by Mail or from the NCC Website

Send orders to:  
NCC • PO Box 416 • Cambridge, OH 43725

OHIO RESIDENTS PLEASE ADD 7.25% SALES TAX

SHIPPING:  
\$5.00 FOR THE FIRST PUBLICATION  
\$1.00 FOR EACH ADDITIONAL ITEM

Please include your name, complete mailing address and your phone number or e-mail address.

Payments by check or Money Order only, payable to NCC

Books may also be purchased on the NCC website,  
[www.cambridgeglass.org](http://www.cambridgeglass.org).

Major Credit Cards are only accepted for web purchases.





## NCC Events

**2020 Benefit Auction**  
**Saturday March 14, 2020**

\*\*\*\*\*

**2020 NCC Convention**  
**June 24-27, 2020**

\*\*\*\*\*

**2020 Fall Meeting**  
**Saturday October 17, 2020**

### *Member Benefit*

Each NCC household is allowed one free 20-word classified ad in the Crystal Ball per calendar year as part of their membership. This can be a "For Sale" or "Wanted" type of classified ad. Submit your ad by email to [editor@cambridgeglass.org](mailto:editor@cambridgeglass.org)



*Let's Retain and  
Recruit new members*

### *Recent Finds*



3400/91 8 in 3 compartment 3 handle Relish  
Valencia and Diane

#### **February 8-9, 2020**

Clearwater Elegant & Depression Glass Show & Sale  
Morningside Recreation Complex  
2400 Harn Blvd.  
Clearwater, FL  
Call: 860-614-7133

**Glass Shows**

#### **February 14-16, 2020**

Houston Glass Show & Sale & The Best Little Antique Show in Texas  
Fort Bend County Fairgrounds  
Hwy 36 and Hwy 59  
Rosenberg, TX  
<http://www.maxmillerantiques.com>

#### **February 29, 2020**

43rd Annual Green River Glass Show & Sale  
Kent Commons  
525 4th Avenue N.  
Kent, WA  
[kayswede@msn.com](mailto:kayswede@msn.com)

#### **March 7-8, 2020**

Three Rivers Depression Era Glass Society  
43rd Annual Show and Sale  
Quality Inn / 300 Tarentum Bridge Road  
New Kensington, PA 15068  
[leasure@earthlink.net](mailto:leasure@earthlink.net)

#### **March 14, 2020**

Annual All-Cambridge Auction  
Pritchard-Laughlin Center  
7033 Glenn Highway  
Cambridge, Ohio

#### **March 14-15, 2020**

The 20-30-40 Glass Society of Illinois  
48th Annual Glass Show & Sale  
The Concord Plaza Midwest Conference Center  
401 West Lake St.  
Northlake, IL 60164  
<http://20-30-40glassociety.org/>

#### **March 19-20, 2020**

Heart of America Glass Collectors  
Vintage Glass and pottery Show and Sale  
Roger T. Sermon Community Center  
SE corner of Noland and Truman Rd.  
Independence, MO  
<http://www.hoagc.com>

#### **April 18-19, 2020**

85th DelMarVa Depression Glass Club Show and Sale  
DuVal High School  
9880 Good Luck Road at Greenbelt Road  
Lanham, MD 20706  
<http://www.delmarvaglassclub.org>

# DEALER DIRECTORY

Dealer Directory - \$24 for 12-months, size limited by box (see below). Includes listing on NCC website. Electronic submissions should be emailed to: [editor@cambridgeglass.org](mailto:editor@cambridgeglass.org)

## Advertising Rates:

1/8 page \$15      1/4 page \$20  
1/2 page \$30      Full page \$50

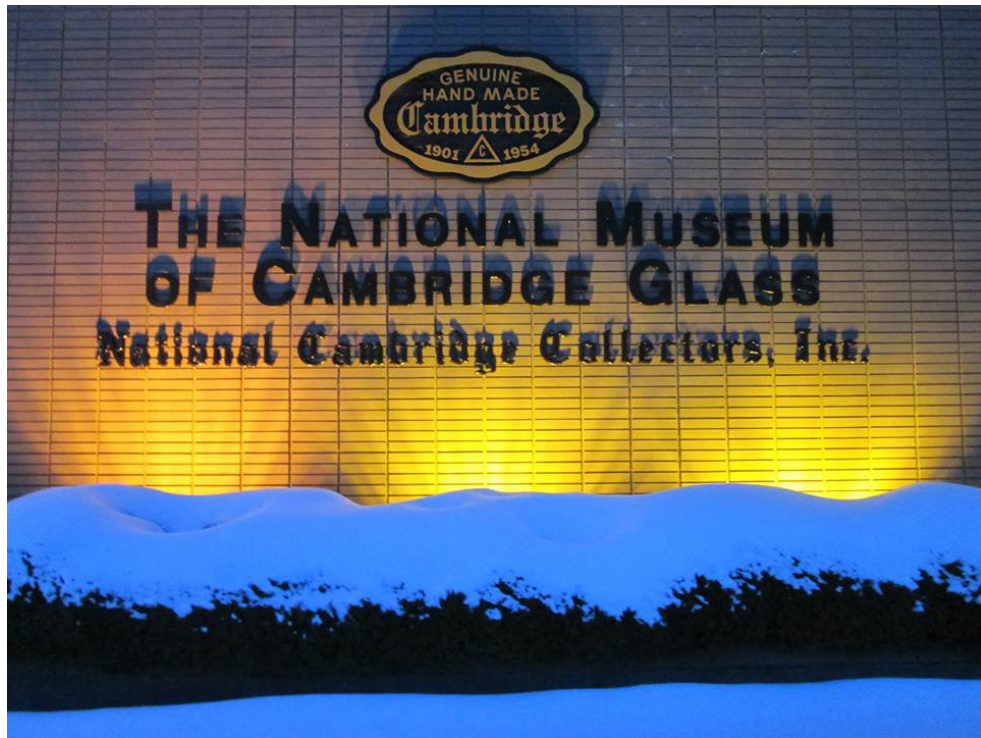
Mailed submissions and all payments should go to PO Box 416, Cambridge, OH 43725. Deadline is 10th of preceding month. Ads must be paid in advance. Show listings are FREE; send info to PO Box or e-mail address 60 days before event.

<p align="center"><b>Max Miller</b> <b>Elegant American Glassware</b> <a href="http://www.maxmillerantiques.com">www.maxmillerantiques.com</a></p> <p>The Market Place 10910 Katy Freeway.      713-410-4780 Houston TX 77043      <a href="mailto:mmxglass@aol.com">mmxglass@aol.com</a></p>	<p align="center"><b>ISAACS ANTIQUES</b> (740) 826-4015</p> <p align="center">↔ <i>located in</i> ↔ <b>Penny Court Mall</b> 637 Wheeling Ave Cambridge, OH</p>
<p align="center"><b>Glen &amp; Carolyn Robinson</b> <b>White Rose Antiques</b> Specializing in Depression Era Glassware</p> <p align="center">2454 McFarland Road York, SC 29745</p> <p>803-684-5685 <a href="mailto:gandcrobinson@aol.com">gandcrobinson@aol.com</a> <a href="http://whiteroseglassware.com">whiteroseglassware.com</a></p>	<p align="center"><b>MARGARET LANE ANTIQUES</b></p> <p align="center">2 E. Main St. New Concord, OH 43762 Lynn Welker      (740) 705-1099</p> <p align="center">Cambridge Glass Matching Service Hours: Mon-Fri 10-12 AM, 1-5 PM or by appointment</p>
<p align="center"><b>CRYSTALLINE COLORS</b> <i>Cambridge • Fostoria • Elegant Glass</i> Penny Court Mall, Cambridge - 2 booths Medina Antique Mall Medina, OH (I-71, exit 218)</p> <p align="center">Lynne R. Franks 216-661-7382</p>	<div style="background-color: #4b0082; color: white; padding: 5px; text-align: center;"> <p><b>Connecting Buyers &amp; Sellers!</b></p> <p>Tell us what you are looking for and we help find it.</p> <p><b>CAMBRIDGE GLASS.US</b></p> <p>P. Snyder 740-601-6018</p> <p><b>E-Mail and Find Your Glass!</b></p> <p><a href="mailto:psnyder@cambridgeglass.us">psnyder@cambridgeglass.us</a></p> <p><a href="http://www.cambridgeglass.us">www.cambridgeglass.us</a></p> </div> <div style="text-align: center;">  <p><b>E-Blast</b></p> <p>When you are searching for Cambridge glass, email your request and it is emailed to all members and dealers. <small>P. Snyder, 1500 Edgewood Dr., Circleville, Ohio 43113</small></p> </div>
<p align="center"><b>CRYSTAL LADY</b> 1817 Vinton St.      Omaha, NE 68108 <b>Bill, Joann and Marcie Hagerty</b> 402-699-0422</p> <p>Specializing in Elegant Glass &amp; Collectibles <a href="http://www.crystalladyantiques.com">www.crystalladyantiques.com</a></p>	<p align="center"><i>Be sure to tell dealers that you saw their ad here.</i></p>





National Cambridge Collectors, Inc.  
PO Box 416  
Cambridge OH 43725  
email: [editor@cambridgeglass.org](mailto:editor@cambridgeglass.org)  
website: [www.cambridgeglass.org](http://www.cambridgeglass.org)



***The National Museum  
of  
Cambridge Glass***

***Open April thru October  
only***

