



# Cambridge Crystal Ball

Published by the National Cambridge Collectors, Inc. as a resource which informs, invites and inspires people to encourage the continued preservation of the glass produced by the Cambridge Glass Company of Cambridge, Ohio for future generations.

Issue No. 498

May 2016

## Convention 2016 - Hollywood

# Special Guest Stars Announced

By Rick Jones

What Hollywood Premiere would be complete without Surprise Special Guest Stars? NCC's 2016 Convention is no different. We are pleased to be welcoming Helen and Bob Jones of Backward Glances from Berkely Springs West Virginia as guests of NCC.

Not only are The Jones's setting up as dealers at our Glass Show for the first time, but they are also bringing along two displays. The first will be on the showroom floor introducing Friends of Cambridge and our guests to the West Virginia Museum of American Glass (WVMAG). Helen Jones is a Past President of WVMAG and on its Board of Directors.

This world-class facility is located in Weston, WV and I wholeheartedly recommend that our members plan a visit. Not only do their displays span much of the history of depression glass (even companies not originating in WV), but it has a top-notch research library.

I have personally visited the museum in the last few years and I know it continues to get better and better. Did I mention they also have a gift shop?

The second display will be in the main Galleria at Pritchard Laughlin and it commemorates the 100<sup>th</sup> anniversary of the manufacturer of Stretch Glass. This milestone is being celebrated all year long by the Stretch Glass Society and The Jones' have been setting up displays far and wide in shows from Sanford FL to Rosenberg TX and to Chicago IL (20-30-40). Upcoming displays will be in Carlisle PA, Winchester VA and the



NDGA National Convention in Tiffin OH this July. It will be an honor to have them in Cambridge and there will be so much we can all learn from them.

### About Stretch Glass

Stretch Glass is iridescent glassware that was made by a number of American glass companies from 1916 to

*Continued on page 5*

### *What's Inside*

Convention2016: Guest Stars Announced.....	1
President's Message .....	3
Minutes of the March Spring Meeting .....	4
Museum Opens for the Season .....	6
Attending Our First NCC Auction .....	7
Convention2016: Ishtar Meets Waterworld. . .	8
Convention2016: Registration .....	9
Convention2016: Schedule of Events.....	11
Only Questions - No Answers.....	13
eBay Report .....	14

# National Cambridge Collectors, Inc.

PO Box 416 Cambridge, OH 43725-0416

## Board of Directors

	2016	
Cindy Arent	Larry Everett	Mark Nye
	2017	
Ken Filippini	Millie Loucks	Freeman Moore
	2018	
Julie Buffenbarger	Doug Ingraham	David Ray
	2019	
Rick Jones	Lindy Thaxton	Lynn Welker

## Officers

President	David Ray
Vice-President	Doug Ingraham
Secretary	Lindy Thaxton
Treasurer	Millie Loucks
Sergeant-at-Arms	Mark Nye

Director of Strategic Planning	Ken Filippini
Director of Human Resources	David Ray
Chair, Standards Committee	Sharon Miller
Chair, Endowment Committee	Doug Ingraham

## Member Services

### Vice President

Member Relations  
Convention  
Digital Media  
Glass Dash  
Glass Show  
Study Groups  
Webmaster

Rick Jones  
Freeman Moore - Membership Database  
Rick Jones - Convention Director  
Alex Citron - Manager of Facebook Operations  
Larry Everett & Frank Wollenhaupt  
Sandra Bridwell-Walker & Roger Loucks  
Jeannie Moore - Study Group Coordinator  
David Adams

## Development

### Vice President

Campaigns  
  
Events  
  
Projects  
Publicity

(vacant)  
Ken & Jane Filippini - Annual Fund Directors  
Larry Everett - Director of the Heritage Society  
Will & Bev Acord - Auction Managers  
Lynn Welker - Auction Manager  
Carl Beynon - Jeweler & Scotties Project Manager  
Jonathan Fuhrman

## Education

### Vice President

Crystal Ball  
Publications  
Media Productions  
Research  
Programming

Larry Everett  
Freeman Moore - Executive Editor  
Mark Nye - Director of Publications  
Dave Rankin - Director of Media Productions  
Mark Nye - Archivist  
Greg Vass - Director of Programming

## Museum

### Vice President

Public Operations  
  
Facilities & Grounds  
Collections  
Merchandise Sales  
  
NCC History  
Community Relations

Cindy Arent  
Sandra Bridwell-Walker - Docent  
Julie Davey - Docent  
Sandy Rohrbough - Docent  
Betty Sivard - Docent  
Gary Wiseman - Docent  
Carl Beynon - Director of Facilities  
Lynn Welker - Director of Collections  
Lynn Welker - Gift Shop Manager  
Cindy Arent - Gift Shop Manager  
Mark Nye - Archivist  
Cindy Arent

## Administration

### Vice President

Accounting & Finance  
Information Technology

Ken Filippini  
Lisa Neilson - Office Manager  
(vacant)

## ADDRESS CHANGES

Please send address changes to:  
Membership - NCC  
PO Box 416  
Cambridge, OH 43725-0416  
or by e-mail to:  
[membership@cambridgeglass.org](mailto:membership@cambridgeglass.org)



## CONTACT US

136 South 9th Street  
Phone: 740 432-4245  
[nccglass@yahoo.com](mailto:nccglass@yahoo.com)



David Ray, President.....  
e-mail: [westervillesh@hotmail.com](mailto:westervillesh@hotmail.com)  
Lindy Thaxton, Secretary.....  
e-mail: [secretary@cambridgeglass.org](mailto:secretary@cambridgeglass.org)

## Heritage Society

*Ensuring the preservation mission of the NCC through planned giving and estate bequests.*

Members of The Heritage Society are those who have included the NCC in their wills or estate plans, thus providing the organization with a secure future.

The mission of The Heritage Society is to foster smart estate planning and to assure that NCC is not forgotten as an important beneficiary. Any pledge is meaningful and appreciated.

All Cambridge collectors - both current and future - will benefit from, and be grateful for your support.

Let us know how we can help with your future plans.

NCC Website: [www.CambridgeGlass.org](http://www.CambridgeGlass.org)

Miami Valley Study Group Website: [www.mvsg.org](http://www.mvsg.org)



## PRESIDENT'S MESSAGE

### *Museum Opens for 2016 Season*

The National Museum of Cambridge Glass opened its doors on Friday, April 1. During the winter, more than 7,000 pieces of glass were dusted, the carpet was scrubbed, the tile floors were waxed, and the education center and hallway were painted in preparation for the 2016 season. Cindy Arent, Lindy Thaxton, Rich Bennett, and many volunteers combined to spend hundreds of hours over the past three months preparing for opening day. According to Cindy, the gift shop is well stocked with new glass inventory for visitors and members to purchase. Some of the new inventory includes Rose Point, crystal and Moonlight Caprice, Georgian covered candies and baskets, etched keyhole candlesticks, keyhole ivy balls, and various pieces of Ebony, Amber and Mandarin Gold.

The Annual Fund materials and election ballots were mailed the second week of April. Annual Fund donations received in 2015 totaled \$47,879.71. As I outlined in the March President's Message, it costs more than \$50,000 per year for NCC to publish the Crystal Ball newsletter and operate the museum. The success of the Annual Fund campaign is crucial for maintaining the day-to-day operations of the museum and the continued success of NCC. As you consider your financial commitment for 2016, I ask you to reflect on how collecting Cambridge glass and the many friendships you have created through your affiliation with NCC have positively influenced your life.

As an organization, our mission is to educate and preserve. Through the museum, we are able to educate hundreds of visitors each year about the glassware produced by the Cambridge Glass Company. Preservation is a more difficult and expensive challenge. In order to preserve the history of the Cambridge Glass Company, we must endow the museum to ensure its continued operation after we are gone. Since the inception of the Annual Fund, our endowment fund has grown nearly \$300,000. In an effort to expedite the growth of the endowment fund, the board of directors voted last year to invest \$250,000 in a diversified portfolio managed by Merrill Lynch. Although the endowment fund is moving in a positive direction, more funds are necessary to reach our goal.

Are you a member of NCC's Heritage Society? Several years ago, Mike Strebler and Rick Jones recognized NCC's need to establish a sufficiently large an endowment fund that would help fund the day-to-day operations of the museum. Although NCC adds surplus operating funds to the endowment fund every year, the Heritage Society provides everyone a mechanism for remembering NCC as part of their estate planning. Being a member of the Heritage Society requires only a verbal commitment to include NCC as part of your estate plan. Former members, Bob and Marsha Ellis were founding members of the Heritage Society. They bequeathed 10% of their estate to NCC's endowment fund. As a result of their generosity, NCC received a cash gift totaling more than \$50,000. If you are interested in learning more about the Heritage Society, paste the following link into your internet browser <http://cambridgeglass.org/heritagesociety.php>. Any member of the board of directors will be happy to answer your questions.

Where will you be the fourth weekend of June? Rick Jones and a team of volunteers are planning an exciting series of events for the 2016 Annual Convention. If you have never attended convention or have not attended convention in many years, please consider joining more than 125 like-minded Cambridge glass collectors for four days of learning, buying, and socializing. The current listing of scheduled events for this year's convention is printed in this issue of the Crystal ball. In addition to preparing menus and organizing educational programs, Rick has traveled the country securing several new glass dealers for this year's show. You are encouraged to register for convention online through the NCC website at [www.cambridgeglass.org](http://www.cambridgeglass.org). Online registration will improve communication and reduce the time traditionally required for the convention director to gather needed information. Nevertheless, the traditional method of mailing your convention registration is still acceptable.

I look forward to seeing everyone in June.

Sincerely,

David Ray  
[westervillesh@hotmail.com](mailto:westervillesh@hotmail.com)

# National Cambridge Collectors, Inc.

## Minutes of the March 4, 2016 Spring Meeting

President David Ray called the 2016 Spring Meeting of the National Cambridge Collectors, Inc. to order on Friday March 4, 2016 at 7:30 pm. The meeting was held at the Pritchard Laughlin Civic Center.

The minutes of the November 7, 2015 Fall Meeting were published in the February 2016 Crystal Ball. No changes or corrections were requested by the membership. Larry Everett moved to approve the minutes as printed. Frank Wollenhaupt seconded the motion. The 2015 Fall Meeting minutes were approved by acclamation.

### Treasurer's report:

Treasurer Millie Loucks reported the 2016 NCC Budget was approved by the Board today. Financial results highlights from 2015 include:

- Costs of the Crystal Ball decreased 14 %.
- The 2015 NCC Convention was very successful. Thanks to Diane Gary for her very nice job.
- The Benefit Auction results were up 1.3% over 2014. Thanks to Bev Accord, Larry Everett, Lynn Welker and the other volunteers.
- The Glass Dash results were up 1.2% thanks to the efforts of Larry Everett and Frank Wollenhaupt.
- The Museum results were up 72.56%. Thanks go to Cindy Arent, Lindy Thaxton, the Museum staff and volunteer who work throughout the year to support the NCC's wonderful museum.

In 2015, the NCC also received special gifts of:

- \$500 from Arthur Sheppard in memory of Hugh McManus
- \$500 from Doug Ingraham
- \$200 from Eastern Ohio Tours for the Museum

Thanks go to everyone who made 2015 a successful year.

### Reports:

Freeman Moore reported the Annual Fund mailing will be out soon. Larry Everett announced the June 2016 Crystal Ball will be the 500<sup>th</sup> issue. Larry also announced the MVSG website now has over 27,000 images you can search. Thanks go to Dave Rankin. The November meeting has been moved to October 15<sup>th</sup>, so mark your calendars. And, work is underway on a new Rose Point book that will hopefully be available at the 2016 Convention.

David Ray reported on Membership for Rick Jones. Rick and his team have plans underway for the 2016 convention. They are working on some changes and new initiatives. The Convention theme is Hollywood, tying in with the Hollywood theme at the Museum. This should be a "can't miss" event. Rick is also working on updating the NCC web site. Plans are underway and funding is being sought.

For the Museum, Cindy Arent reported they are just about ready

to open on April 1<sup>st</sup>. A new tour option about marbles and the connection between Christensen and Cambridge has been added. Two groups have already signed up. A Kiwanis grant has been used to fund 15 new chairs, TV/DVD and marble mats. Using 2 tables, the mats, and a frame built by Carl Beynon to keep the marbles in, the Museum is ready for tour groups to play marbles. The grant, with its emphasis on children, is also funding a new book to be given free to intermediate age children who come to the Museum. The Kiwanis previously funded the *ABCs of Glass* book for younger children. The new book will be called *The Heat Is On*. David Ray reported that since the November meeting, the second half of the endowment fund has been invested.

Larry Everett had no property report.

The Nominating Committee, chaired by David Ray, has been seeking members to run for the board in 2016 for a 4 year term. The terms of Cindy Arent, Larry Everett and Mark Nye are expiring. Cindy Arent and Larry Everett have agreed to run for re-election to the board. Mark Nye has chosen not to run but will continue with his participation as NCC Archivist. Additional nominees were sought and the following slate is presented by the Committee:

- Cindy Arent
- Sandy Bridwell-Walker
- Bill Dufft
- Larry Everett
- Sharon Miller

Nominations from the floor were solicited. With no further nominations being presented, Larry Everett moved nominations cease and the proposed slate of 5 candidates be accepted. Frank Wollenhaupt seconded. Motion approved by acclamation.

The ballot for voting in the 2016 Board election will be included with the Annual Fund mailing in early April. Please return your vote at least one week before convention to be counted.

**Old Business:** None

**New Business:**

Frank Wollenhaupt announced he and Larry Everett are working on the Glass Dash and there are still a few openings. Those interested in participating can see Frank for a contract.

Upon hearing no further new business, Frank Wollenhaupt moved to adjourn, seconded by Bev Accord. Approved and meeting adjourned.

Respectfully submitted,  
Lindy Thaxton

*Continued from page 1*

circa 1930. The glass is either pressed or mold-blown, and unlike Carnival Glass, has little or no pattern. It was originally made to compete with the iridescent, expensive art glass being made by companies such as Tiffany, Steuben, and Durand.

Some of the well-known companies that produced Stretch Glass were Fenton, Imperial, U.S. Glass, and Northwood. It was predominately made in transparent colors such as crystal, green, pink, yellow, and blue. Although some pieces can be found in ruby, cobalt blue, Tangerine (orange), Russet (greenish-brown), and even some opaque colors.

Stretch Glass is a term coined by collectors based on the appearance of “stretch marks” on the surface of the glass. After removal from the mold, the hot glass was sprayed with metallic salts to produce the iridescence. It was then reheated and manipulated into a final shape. The manipulation would spread the iridescent surface of the glass causing the “stretch marks”.

Prior to Convention, you can learn more about Stretch Glass and the Society at [www.stretchglassociety.org](http://www.stretchglassociety.org).

### Meet Helen and Bob Jones

Helen and Bob have been collecting and buying & selling glassware since the late 1970's. Their interest in glass eventually lead to research and even purchasing glass, tools and paperwork from a closed glass factory. They have written several articles for various glass publications. They are among the foremost dealers of elegant and depression glass in the country.

The Jones's belong to the Stretch Glass Society, both are members of the Board of The Morgantown Glass Collectors Guild, and Helen is currently a Board Member and Past President of the Museum of American Glass in West Virginia. ■

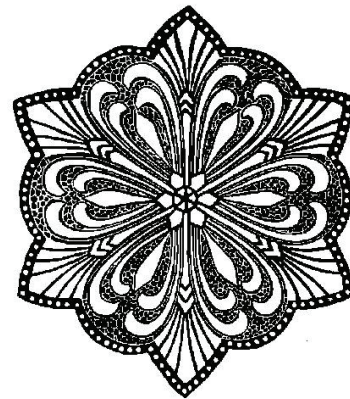


## Volunteers Needed: Banquet Center Pieces

By Jeannie Moore

It's time to start planning for center pieces for the Friday night banquet June 24. The theme this year is Hollywood, which is known for its glitz and glamor. There have been beautiful arrangements at the past conventions that have brightened up the tables. I am asking for about 15 volunteers to search thru their glass collection and find that piece of glass they want to feature as a center piece. Center pieces can be a team effort, so let your imaginations start creating.

If you would like to volunteer for a table, please email Jeannie Moore at [jeannie\\_moore@verizon.net](mailto:jeannie_moore@verizon.net). Thank you.



It's time to **re-enroll** for the Kroger Community Rewards program which runs May 2016 – April 2017. By enrolling your Kroger card in the program, every time you shop, Kroger will make a donation to NCC. This program is separate from the gas rewards and other programs. This applies to Kroger customers in the greater Columbus area as well as north of Columbus up to Toledo, and east of Columbus.



Go to [www.krogercommunityrewards.com](http://www.krogercommunityrewards.com) • Click “sign-in” • Put in your email address and password used to enroll the card. • Put in the group number 91504 or search for National Cambridge Collectors. • Click Enroll. You are now enrolled for the May 1<sup>st</sup> 2016 to April 30<sup>th</sup> 2017 year of Kroger Community Rewards.

# Museum Opens for the Season

By Cindy Arent

The National Museum of Cambridge Glass has opened for the 15<sup>th</sup> year at 136 S. 9<sup>th</sup> Street in Cambridge, Ohio. The National Cambridge Collectors, Inc. opened the first museum in 1982, and was located on Route 40 just east of Cambridge. In June, 1998 the museum was forced to close due to a flood that filled the museum with 5 ½ feet of water. NCC proudly opened the current museum in downtown Cambridge in 2002. If you do the math, our organization has operated a museum for 32 years.... quite an accomplishment!



This year the National Museum of Cambridge Glass opened for the year on Friday, April 1<sup>st</sup>. The first visitors were from Germany and they loved the museum. The week before opening, volunteers were still installing a new exhibit in the museum Edna McManus Shepard Education Center. A very special desk was donated in memory of Atty. and Mrs. Russell H. Booth, Jr. When Mr. Booth opened his law practice in 1958, he purchased office furniture from the Cambridge Glass

Company as it was closing. In the NCC archives, there is an original photograph of Arthur J. Bennett sitting behind his office desk. This desk is exactly like the one recently donated. We always enjoy discovering more history of The Cambridge Glass Company.

We are looking forward to the third grade classes from Central Elementary on April 15<sup>th</sup>. There will be 57 students touring the museum in two groups. They will be the first school group to receive the new museum student booklet, *THE HEAT IS ON*, as part of their museum experience. In addition, we will be setting up the marble table. The students will hear a brief history of the Christensen Agate Company that was located behind the Cambridge Glass Company complex. Christensen used Cambridge cullet in the manufacturing of their marbles. Visitors can see Cambridge colors in each of the marbles on display at the museum.

On April 20<sup>th</sup>, we will host the AAA East bus group with 49 people on board. Many museum volunteers have signed up to help with both tour groups and we are excited to get back to the work we love.



More updates about museum events will follow in the June issue of the Crystal Ball. Make your plans now for attending convention and visiting the National Museum of Cambridge Glass!

From the NCC archives, this photo shows Arthur J. Bennett sitting behind his office desk. There is no date on the photo, but appears to have been taken in the 1920s or early 1930s. Mr. Bennett passed away in 1940.

## Attending Our First NCC Auction

by  
Tim & Nancy Crose

TO: 2016 NCC Auction Event

This was our first time attending the NCC Auction Event. **WOW!!!** The variety of elegant glassware that was submitted for the auction was gorgeous and can't imagine that there wasn't a piece of glassware that any of the attendees wouldn't have considered bidding on for their collection of Cambridge elegant glass, even if they already had that particular piece.

Many years ago we had a glass collector from Bushnell, Illinois, inquire if we had ever visited the Cambridge Museum in Cambridge, Ohio. They encouraged us to take the time to go, and finally two years ago, we scheduled a road trip. We were like kids in a candy store, and just in awe of all the beautiful glass that was produced by the Cambridge Glass Company of Ohio. We have been so blessed with making acquaintances with individuals who have the same interest in Cambridge elegant glassware and hearing their stories of collecting and family members who were employed at the Cambridge Glass Co.

Thank you NCC for making our trip to Cambridge so exciting and we are looking forward to attending the NCC convention in June for the first time.

Tim and Nancy Crose



Nancy & Tim Crose attending their first NCC auction, waiting before everything gets busy.



Opening day at the museum was busy. The first morning visitors were from Germany, a very nice couple!



A new museum exhibit has been created using an archival photo and a desk recently donated that originated from the Cambridge Glass Company office. Arthur J. Bennett is sitting behind his desk, examining company records and sample pieces. A copy of the original photo is framed and can be viewed on the exhibit desk.



The Christensen Marble Company was located behind the Cambridge Glass Company complex in East Cambridge. Christensen used Cambridge cullet in the production of their machine made marbles. This type of Christensen marble was known as a "Flame". You can see the Cambridge colors of Ebony, Primrose and Windsor Blue in the marble. Christensen marbles are highly collectible today.

# Ishtar Meets Waterworld. Huh?

By Rick Jones

As we have been telling you for the past couple of months, the 2016 NCC Convention celebrates Cambridge Glass in the movies and TV. But as any media junkie knows, they are not all Oscar winners. Some are out and out clunkers. Total trash. Know of any?

For me, my most recent was Identity Thief. Come to think of it, almost any Melissa McCarthy movie like Spys, Tammy, The Heat qualify, except of course for the brilliant and wonderful Bridesmaids. Plus, Cindy and I love her hosting SNL. As dinner conversation at Convention we all should compare notes on what flicks we found to be flops. Could be fun table talk. Battleship Earth any one? Mars Needs Moms? The Lone Ranger? Heaven's Gate?

To recognize and honor that not all movies are smashing successes, we created an NCC program on Thursday night called *Ishtar Meets Waterworld: Turkeys, Dogs and Famous Flops*. Just as Ishtar and Waterworld had stars like Dustin Hoffman, Warren Beatty and Kevin Costner, NCC will also have our Big Stars – but we guarantee you this program will be A HIT!

This program will feature three top glass experts, each delivering a 15-20 minute talk on their topic and we will make sure there is time for an active Q&A.

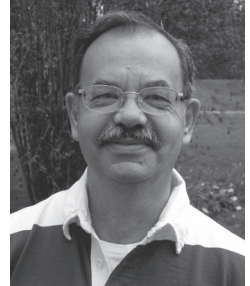
First up is Turkeys – led by our very own **Jim Finley** of Sedalia MO. Jim has been a long-time collector of the rare and unusual in Cambridge Glass and one of his personal favorites has been Cambridge Turkeys. He can actually say he has owned them all.



Up next will be **Sandy Bridwell-Walker** talking about one of her passions – Cat and Dog Bottles. Her collection is not just relegated to Cambridge, and we've asked her to talk about other companies who made them – and how to tell the difference. I am really looking forward to this program.



And finally, we have **Lynn Welker** talking about Famous Flops. Like the movies, not everything Cambridge made achieved Oscar Gold. There were indeed scores of flops. We have asked Lynn, to in David Letterman-style, reveal his Top Ten Biggest Cambridge Flops.



This program will be after our Thursday night opening dinner and I know it will be **SRO** – Standing Room Only. Please make plans to join us now and be among the many who have already registered online for the first time in NCC history.



**PLEASE REGISTER ONLINE (or by paper) NOW. THANKS!**

**COPY AND FOLLOW THIS LINK**  
<http://cambridgeglass.org/convention/reg1.php>





# *Hollywood!*

## **2016 NCC CONVENTION – 43<sup>rd</sup> ANNUAL** **June 22<sup>nd</sup> through June 25<sup>th</sup>, 2016** *Registration*

**We hope to see you all this June for a fun Convention celebrating Cambridge Glass in the movies and on TV. For the first time, you can register online AND WE ENCOURAGE YOU TO DO SO. Convention registration is due by June 1, 2016.** (Registrations post-marked after June 1, 2016 will incur a late fee.) If you prefer the traditional way, you can send your check payable to NCC, Inc. along with the completed registration form to:

**National Cambridge Collectors, Inc.**  
**Convention Registration**  
**P. O. Box 416**  
**Cambridge, Ohio 43725-0416**

Each person registering for the convention pays the \$25.00 registration fee which helps cover the cost of facility rental. Your registration fee includes admission to the NCC Glass Show and Sale and all other scheduled events. Please register for all events you plan to attend, including those offered at no charge. For children under ten years of age, there is no registration fee; however, they must pay for any meals they attend.

**Show dealers and President Circle members – there will be no registration fee.**

Please list each person registering separately. Names should be given as you wish them to appear on your name badge. Please provide your membership number and your email address on the registration form. If registering for more than three persons, list additional members on a separate sheet or the space provided below.

**All registrants will receive an email confirmation of their registration. And PLEASE, register electronically as it helps your Convention organizers IMMENSELY!**

Look for "**Convention Registration**" on the NCC website <http://www.CambridgeGlass.org>

### **Cancellation Policy**

Written Cancellation up to 30 days before first convention event – full refund.

Written Cancellation up to 15 day before first convention event – full refund less \$10 handling fee.

Written Cancellation up to 5 days before first convention event – refund meals only.

Written Cancellation less than 5 days before first convention event – no refund.

# HOLLYWOOD!

2016 NCC CONVENTION – 43<sup>rd</sup> ANNUAL  
 June 22<sup>nd</sup> through June 25<sup>th</sup>, 2016  
**Registration Form**

<i>Name of Conventioneers</i> <small>(As you wish it to appear on your Name Badge)</small>	<i>Membership Number</i>	<i>First Convention</i>	
_____	_____	Yes	No
_____	_____	Yes	No
_____	_____	Yes	No

Address: \_\_\_\_\_

Email address \_\_\_\_\_ Phone Number (\_\_\_\_) \_\_\_\_\_  
(Registration confirmation will be sent via email when the above information is provided)

<i>ACTIVITY</i>	<i>FEE</i>	<i>NUMBER ATTENDING</i>	<i>TOTAL</i>
<i>Registration (postmarked by June 1)</i>	\$25.00	_____	_____
<i>Late Registration (postmarked after June 1)</i>	\$35.00	_____	_____
<i>Dealer or President's Circle</i>	N/A	_____	_____
<i>Red Carpet Reception @ Museum (No Charge)</i>	N/A	_____	_____
<b><i>Grand Opening Celebration and Dinner*</i></b> <small><i>Parmesan Encrusted Chicken, Homemade Lasagna, Spinach Cheese Lasagna, Glazed Carrots, Mixed Green Chopped Salad, Variety of Pies, Rolls &amp; Beverages</i></small>	\$17.00	_____	_____
<b><i>Banquet Dinner, Annual Meeting and Awards*</i></b> <small><i>Spinach Artichoke Stuffed Chicken, Carved Beef Tenderloin w/ Au Jus, Twice-baked potato, Caribbean Blend veggies, Wedge Salad, White Chocolate/Raspberry Cheesecake, Chocolate Lasagna, French Bread &amp; Beverages</i></small>	\$32.50	_____	_____
<b><i>Wrap Party and Closing Dinner</i></b> <small><i>Casual Fare including Deep-Fried Chicken, Beer Braised Pulled Pork, Cole Slaw, Loaded Potato Salad, Fresh Fruit, Buns, Brownies, Lemonade Punch, Iced Tea, and Coffee</i></small>	\$17.00	_____	_____
<b><i>Backlot Tour and Casting Call (No Charge)</i></b> <small><i>(Likely limited to first 50 applicants, register quickly!)</i></small>	N/A	_____	_____
<b><i>First Time Orientation and Coffee with Cambridge</i></b>		_____	_____

***What's your Favorite Movie?*** \_\_\_\_\_  
*(This information will appear on your name badge)*

\* Meals include iced tea, coffee, taxes and gratuity. Cocktails are available for an additional charge. Please contact Rick Jones at [Caprice0@aol.com](mailto:Caprice0@aol.com) if special meals are required due to dietary restrictions.

***Any additional comments, information, special needs or registrants?***  
 \_\_\_\_\_  
 \_\_\_\_\_



# HOLLYWOOD!

## 2016 NCC CONVENTION

### PRESENTLY SCHEDULED

#### WEDNESDAY, JUNE 22

**5:30 pm** Opening Night **Red Carpet Reception**, Appetizers/Wine Bars  
Special Beverages timed to certain great film eras  
Dinner on your Own, Grab a Friend

#### THURSDAY, JUNE 23

<b>9:00 am</b>	Registration Opens	National Museum of Cambridge Glass
<b>10:00 am</b>	<b>Back Lot Tour/Casting Call</b>	National Museum of Cambridge Glass
<b>5:00 pm</b>	Cocktail Reception/Dealer Salute	Pritchard Laughlin Galleria
<b>6:00 pm</b>	Opening Dinner Buffet, Meet the Board	Pritchard Laughlin Galleria
<b>7:30 pm</b>	Program "Ishtar Meets Waterworld" <b>Turkeys, Dogs and Famous Flops</b>	Pritchard Laughlin Conference Room

#### FRIDAY, JUNE 24

<b>8:00 am</b>	Registration Opens	National Museum of Cambridge Glass
<b>9:00 am</b>	First Timers and Mentors Program	National Museum of Cambridge Glass
<b>9:00 am</b>	Coffee with Cambridge	National Museum of Cambridge Glass
<b>11:00 am</b>	Stretch Glass Program/Helen Jones	Pritchard Laughlin Galleria
<b>1:00 pm</b>	Glass Show and Sale Opens	Pritchard Laughlin Exhibit Hall
<b>5:00 pm</b>	Glass Show and Sale Closes	
<b>6:00 pm</b>	Cocktail Reception/President's Circle Salute	Pritchard Laughlin Galleria
<b>6:45 pm</b>	<b>Banquet Dinner &amp; Annual Meeting</b>	Pritchard Laughlin Galleria
	Awards Presentation, <b>Endowment Fund-Raiser</b>	
<b>8:30pm</b>	Bring & Brag and Glass ID	Pritchard Laughlin Conference Room

#### SATURDAY, JUNE 25

<b>7:00 am</b>	Glass Dash – Early Bird Admission	St. Benedict's Gymnasium
<b>8:30 am</b>	Glass Dash – Regular Admission	St. Benedict's Gymnasium
<b>10:30 am</b>	Glass Show and Sale ( <b>note earlier opening</b> )	Pritchard Laughlin Exhibit Hall
<b>12:00 pm</b>	Educational Program TBD	Pritchard Laughlin Conference Room
<b>2:00 pm</b>	Meet the WV Museum of American Glass	Pritchard Laughlin Exhibit Hall
<b>4:00 pm</b>	Glass Show and Sale Closes	
<b>5:30 pm</b>	Cocktail Celebration	Pritchard Laughlin Galleria
<b>6:30 pm</b>	<b>Wrap Party and Dinner</b>	Pritchard Laughlin Galleria
<b>7:30 pm</b>	Miami Valley Study Group Presents: <b>THE STARS OF CAMBRIDGE</b>	Pritchard Laughlin Conference Room

**MORE SPECIAL EVENTS AND POP-UP PROGRAMS TO BE ANNOUNCED (Or Will They?)**



The following Cambridge area hotels are ideal for Friends of Cambridge, glass dealers and other guests who plan on attending our 2016 Annual Convention (*HOLLYWOOD!*) or other events during the year. When making a reservation, please ask for the “Cambridge Glass Collectors rate”.

**Rates Effective as of: 2/10/2016**

<u>Hotel</u>	<u>Phone Number</u>	<u>Room Rates</u>	<u>Comments</u>
Comfort Inn	740-435-3200	\$79.00 \$89.00 \$109.00	2 Queen Beds 1 King Bed Suite w/ hot tub
Sleep Inn	740-435-0035	\$79.00	Book with the links below: <a href="http://www.comfortinn.com/ires/en-US/html/ArrivalInfo?hotel=OH204&amp;srp=LGLASS&amp;pu=no">http://www.comfortinn.com/ires/en-US/html/ArrivalInfo?hotel=OH204&amp;srp=LGLASS&amp;pu=no</a> <a href="http://www.sleepinn.com/ires/en-US/html/ArrivalInfo?hotel=OH587&amp;srp=LGLASS&amp;pu=no">http://www.sleepinn.com/ires/en-US/html/ArrivalInfo?hotel=OH587&amp;srp=LGLASS&amp;pu=no</a>
Hampton Inn	740-439-0600	\$100.00 \$105.00 \$120.00 \$145.00	Standard Double Queen Standard King Suite Whirlpool Suite
Microtel	740-435-8080	\$69.00 \$79.00 \$89.00	Single Queen Double Queen Queen Suite
Holiday Inn Express	866-925-8676	\$119.99	Any Room
Days Inn	740-432-5691	\$59.00 \$79.00 \$79.00	March Rate (off-season) Likely Convention Rate, may change Likely Fall Rate
Baymont Inn	740-439-1505	\$89.99	6-22-6/26

**If you book one of these hotels at a lower rate, PLEASE LET US KNOW. Thanks.**

**Sandy Bridwell-Walker** Glass Show Committee [virtualattic@sbcglobal.net](mailto:virtualattic@sbcglobal.net)  
**Rick Jones** Convention Director [Caprice0@aol.com](mailto:Caprice0@aol.com)

If you book another hotel in the area, please share that knowledge as well and we'll update this listing and our website [www.cambridgeglass.org](http://www.cambridgeglass.org)

# ONLY QUESTIONS - NO ANSWERS

By Frank Wollenhaupt ([fewvic303@sbcglobal.net](mailto:fewvic303@sbcglobal.net))

The other night my wife and I were trying to identify a strange bottle that we had just seen. We felt that it was Cambridge but couldn't put our finger on just what it was.

After you have been doing the glass thing for a number of years, everything starts to run together. All the different manufactures and the different items start to get confusing. So with nothing left to do, we started to go through the old Near Cut Catalogues.

That was a mistake. When you are looking for something, you tend to look at everything even harder and see things that you don't remember or claim that you have never seen before. And that was the case.

So I thought if I hadn't seen it in 40+ years, does it exist? I have listed 8 items that I don't ever remember seeing but they do appear in catalogues. I thought I would list the items, the photo from the catalogue and see if anyone has one in their collection.

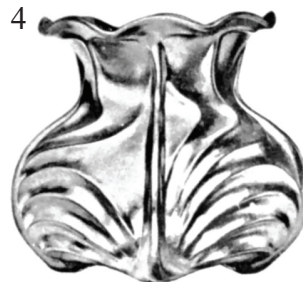
I even thought I would make a game of it. For everyone that has one of these items and takes a photo of it, and sends it to me, I will put your name in for a prize drawing.

I need a color photo along with a description.

- #1 - Is a #30 - "Base for Bowls" it is found in the 30/34 catalogue on page J
- #2 - Is a #77 - tall decanter found on page 12 in the 1916 catalogue reprint
- #3 - Is a #2735 - 9 inch cherry vase found on page 40 of the 1916 catalogue reprint
- #4 - Is a #2841 - low rose bowl found on page 40 of the 1916 catalogue reprint
- #5 - Is a #2825 - Old rose Candlestick found on page 42 of the 1916 catalogue reprint
- #6 - Is a # 2828 - "On the Hog" container found on page 62 of the 1916 catalogue reprint
- #7 - Is the Air Ship candy container found on page 62 of the 1916 catalogue reprint
- #8 - Is the #221 - 12 inch candle lamp base found on page 101 of catalogue reprint #10

The above is just a small list of questions. I hope some of our friends have a few answers.

Send the photos and information to:  
[fewvic303@sbcglobal.net](mailto:fewvic303@sbcglobal.net).



This report is provided to keep members up with what's happening on the world's largest Internet Auction site, and focuses on Cambridge glass items that are seldom or rarely seen. Please note we cannot guarantee the accuracy of listings herein.

Welcome to the eBay Report. This column features Cambridge glass items that sold on eBay circa late March and early April, 2016. Selling prices have been rounded to the nearest dollar.

### Statuesque (Nude Stem) Line

A cigarette box on the large nude stem with an Amethyst top and lid sold for \$345 on a Buy It Now. A flat rim comport with a Forest Green bowl sold for \$100 on Buy It Now. The same item with a Royal Blue bowl sold at auction for \$128. A pair of the same comports, but with Amethyst bowls, sold for only \$125 in an "incognito" listing.



An ivy ball vase in solid crystal sold for \$69. A set of 5 brandies in late colors (Tahoe Blue, Amethyst, late Pink, Crystal and Mocha) sold for \$169. There was a base nick on the first two mentioned above.



### Animals and Figural items



A 9-3/4" Rose Lady flower figure with the early tall base in Ivory sold for \$795 on Buy It Now. A Rose Lady flower figure on the "regular" base in Emerald Green went for the opening bid of \$150.



An 8-1/2 inch Draped Lady flower figure, rare in Bluebell, rang up \$695 on Buy It Now.

A #40 10 inch Flower or Fruit Center (better known as the "Flying Nude" footed bowl) in Amber sold for \$416. The sellers mentioned that the piece had "a hairline fracture/scratch in the bent leg of the lady." However, I have inspected these bowls closely, and what they describe could be simply the mark left where the mold parts met. Only the buyer will know for sure, when he or she receives the piece.



A crystal Buddha figure mounted as a lamp on a fancy brass base sold for the opening bid of \$195.

### Etched Tableware and Stemware

An Emerald Green #917/1167 gravy boat and stand etched Cleo sold for the opening bid of \$70.



A #3400/152 "Doulton" style jug etched Wildflower sold for \$87. There was a light ring of haze on the bottom surface of the pitcher. Based on the shape of the lip and rim, it appears to me that this was the 76 ounce jug, rather than the #3900/141 90 ounce Doulton jug. I didn't spot the difference in shape between the two sizes until I had to look them up in a reference book.



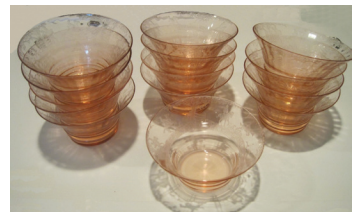
A #3900/115 76 ounce jug etched Chantilly with sterling silver base sold for \$75.

A set of four #498 10 ounce flat tumblers etched Candlelight, each with an original Cambridge label, lit the way for \$158.



A #1321 28 ounce footed decanter, seldom seen with Vintage etch, wrung only \$38 worth of juice out of collectors.

A set of four Peach Blo #3075 stems (I believe they were parfais) etched Hunt scene rode off for only \$60. A set of 17 (yes, seventeen!) #3075 cordials in Peach Blo etched Hunt Scene sold for \$315. That works out to \$18.53 per stem. The same seller had a set of 13 matching finger bowls, which sold for \$304, or \$23.38 each.



A #7801 5 ounce footed tumbler etched Rose Point sold for \$38. This shape is depicted on page 77 of our Rose Point book. A 12 ounce ice tea tumbler was also made in shape #7801. These can't be common, so I was a surprised that it didn't bring a little more.

### Enamel and Gold Decorations

A very hard to find set of bathroom bottles in Ebony with etched and gold-encrusted "labels" on each bottle sold for \$209. The seller noted that two of the bottles had chips, and that there was wear to the gold trim. Page 55 of the Cambridge



1930-1934 catalog reprint shows bottles etched Cotton, Epsom Salts, Toilet Water, Boric Acid, Bath Salts, Bicarb Soda,

and Witch Hazel, though other labels are known. The sets came on either the 6" by 6" square #1198 tray, which held 4 bottles, or the 15" rectangular #1197 tray, which held 5 bottles. The set offered in this auction had 5 bottles, etched Mouth Wash, Hand Lotion, Cotton, Bicarb Soda, and Alcohol. So that gives us at least 10 different bottle labels to look for. If you have any bottles with a different label, please contact me, and I'll share the information in my next column.

just wait for the auction to close, and was able to snag them for the \$48 opening bid.

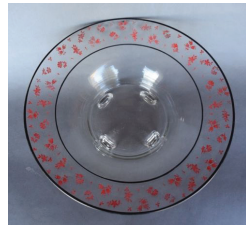


A #119 basket in Azurite with gold trim highlights skipped away for \$305. This was the large size basket, which is seldom seen in the 1920s opaque colors, not one of the more common small "favor" size baskets.

A set of 4 #300 Caprice 4-1/2 ounce claret wines with crystal stem and La Rosa pink bowls sold for the opening bid of \$100.



A #1321 footed decanter and 5 #7966 2 ounce sherries etched and gold encrusted Elaine sold for \$231. A #993 4-footed 13 inch bowl with unusual red- and black encrusted Chintz etching sold for \$63.



A pair of hurricane shades etched Rose Point sold for \$139. I couldn't find the precise shape number for the shades, but they are about 4-1/2 inches high, have a rib optic and crimped top edges. They fit the #1601 and #1603 hurricane lamp, as well as the #1590 twin hurricane lamp.



Miscellaneous

A Near Cut Inverted Feather 8 inch bowl marked with NEAR CUT and just 3 minor flakes, sold for \$25 on a Buy It Now. A #2672 Near Cut Bottle Candlestick sold for \$41.



A #119 7 inch handled basket vase etched Rose Point sold for \$154.

A #119/141 90 ounce Doulton pitcher in Royal Blue, set in an ornate pewter handle and base (rather than having an applied handle in Crystal, as usual) sold for \$150 in an "incognito" listing.



I'll close this month's installment with a bargain purchase. A lucky bidder won a pair of Royal Blue #3122 cocktails for \$2. The shipping cost was six times the cost of the items! It pays to browse those "off" categories.



A decisive buyer shelled out \$595 for a seldom-seen #45 Shell 52 ounce pitcher in Royal Blue with crystal handle on a Buy It Now.

An amber Everglades #15 11 inch bowl sold for \$85. This is the shape that is pulled up into a rough square shape with four crimps. Not picturing it? See page 33-28 of the 1930-1934 catalog reprint, bottom left.

One of our readers contacted me to say that the single ebony Community 7-1/2 inch candlestick that I reported on in April's column was indeed sniffed out by "one of us," and that the etching on it is #510. Naturally, the happy owners would love to have a mate for it, so if you see one, please contact me.



A pair of amber Dolphin candleholders were listed under (get this!) Pottery & Glass – Glassware – Opaque – Custard. They were offered with a Buy It Now price, but they were so well hidden, some lucky buyer was confident enough to



That's all for now. If you see any interesting Cambridge glass on eBay that you think I should be watching or reporting on, or if you have any other input, feel free to contact me at [LAGlass@pacbell.net](mailto:LAGlass@pacbell.net). Until next month, happy Cambridge hunting!

**WANTED**  
*Glass Dash Participants*

We are on the lookout for several interested glass dealers for the 2016 Glass Dash which will be held Saturday June 25, at the St. Benedict's Gym, the same location as the past several years. The dash is where everyone gets the same chance to add that rare item to the collection. We are looking for anyone that is wanting to reduce their collection or just has too much. This is a great venue to reduce your collection and add that rare item. If interested in joining the fun, please contact Frank Wollenhaupt by email at [fewvic303@sbcglobal.net](mailto:fewvic303@sbcglobal.net) or just give him a call at 937-475-2889.

NCC welcomes the following new members

Melissa Gilliland	IN
Dennis W. Humes	IL
Partricia E. Lewis	OH
Raymond M. Lewis	OH
Teresa Weisgerber	OH
Leegh Wyse	OR
Michael Wyse	OR

*Share your passion about Cambridge Glass by giving a membership to a friend.*


**17<sup>TH</sup> ANNUAL  
ELEGANT AND DEPRESSION  
GLASS SHOW AND SALE  
JULY 16-17, 2016**

**THE FAIRGROUNDS NASHVILLE**  
(Formerly Tennessee State Fairgrounds)  
**EXHIBITOR BUILDING**  
**625 SMITH AVE.**  
**NASHVILLE, TN 37203**

**SATURDAY HOURS - 10 AM TO 5 PM**  
with Guest Speaker at 1 PM  
**SUNDAY HOURS - 11 AM TO 3 PM**

**ADMISSION \$6.00 – GOOD FOR BOTH DAYS**  
**For FREE PARKING, present this card at gate.**

*FEATURING  
VINTAGE ELEGANT & DEPRESSION GLASS  
DEALERS FROM ACROSS THE COUNTRY  
GLASS REPAIR BY RICHARD HELDENBRAND*

HOSTED BY FOSTORIA GLASS SOCIETY OF TENNESSEE  
SHOW INFORMATION: (615) 856-4259  
Email: [fostoria\\_tn@bellsouth.net](mailto:fostoria_tn@bellsouth.net)  
[www.fostoria-tennessee.com](http://www.fostoria-tennessee.com)  
 [www.facebook.com/fostoriaglass.tn](http://www.facebook.com/fostoriaglass.tn)

 **National Cambridge Collectors Inc**

Presents the

**42nd Annual  
NCC Convention Show & Sale**

Friday, June 24th 2016: 1 pm - 5pm  
Saturday, June 25th 2016: 10:30 am - 4pm



**Pritchard Laughlin Civic Center  
Cambridge, Ohio**

Featuring Glassware by Cambridge, Fostoria, Helsey, Duncan, Imperial, Tiffin, Morgantown and other Fine Glassware

Admission: \$5 Good Both Days!  
[www.cambridgeglass.org](http://www.cambridgeglass.org) for more information

**Glass Dash**

Saturday, June 25th  
7am Early Bird Admission \$10  
8:30am General Admission \$4  
St. Benedict's Gym  
233 N 7th St.  
Cambridge, Ohio



While in town, be sure to visit the National Museum of Cambridge Glass  
136 South 9th Street  
Cambridge, Ohio  
740-432-4245



## NCC Events

\*\*\*\*\*

**2016 NCC Convention  
June 23-25, 2016**

\*\*\*\*\*

**2016 Fall Meeting  
October 15, 2016**

### *New Member Benefit*

Each NCC household is allowed one free 20-word classified ad in the Crystal Ball per calendar year as part of their membership. This can be a "For Sale" or "Wanted" type of classified ad. Submit your ad by email to [editor@cambridgeglass.org](mailto:editor@cambridgeglass.org)

## Recently seen



This spectacular Near Cut #2656 Star punch bowl with ruby flashing was included in the auction of a collection of ruby flashed items. The Star line was introduced for the 1908 selling season, so this punch set is not easily found. Photo reproduced with the permission of Jeffrey Evans Auction House.

## Glass Shows

**May 6-7, 2016**

Eastern National Antique Show  
Carlisle Expo Center  
Carlisle, PA  
[holpromo@yahoo.com](mailto:holpromo@yahoo.com)

**May 14-15, 2016**

Western Reserve American Glass Club presents  
Glass Show & Sale of Antique & Vintage Glass, Pottery & China  
3600 Biddulph Rd.  
Cleveland, OH 44109  
[barbm1002@yahoo.com](mailto:barbm1002@yahoo.com)

**May 20-21, 2016**

Valley Glasshoppers Spring 2016 Glass Show & Sale  
1309 Opequon Ave  
Winchester, VA 22601  
<http://www.valleyglasshoppers.org>

**June 4-5, 2016**

Old Morgantown Glass Show and Sale  
Westover VFW / 340 Holland Ave.  
Westover, WV  
<http://www.oldmorgantown.org/>

**June 10-12 2016**

2016 Annual Fostoria Glass Society of America  
Convention and Elegant Glass Show  
Moundsville Center Building  
Moundsville WV  
<http://fostoriaglass.org>

**June 11-12, 2016**

35<sup>th</sup> Annual Belleville American Glassware & Pottery Show  
Belle-Clare Fairgrounds  
Belleville, IL  
[redapplelegal@aol.com](mailto:redapplelegal@aol.com)

**June 24-25, 2016**

**42<sup>nd</sup> Annual NCC Convention Show and Sale**  
**Prichard Laughlin Civic Center**  
**Cambridge, OH**  
<http://www.cambridgeglass.org/glassshow.php>



**July 16-17, 2016**

17<sup>th</sup> Annual Elegant and Depression Glass Show and Sale  
625 Smith Avenue, Exhibitor Building  
Nashville, TN  
<http://www.fostoria-tennessee.com/>

NDGA 42<sup>nd</sup> Annual Convention Show and Sale  
Heminger Center  
Tiffin University  
Tiffin, OH  
<http://ndga.net/conv2016.php>

# For Sale - NCC Books and DVD

Published by NCC • Members receive a 10% discount

TITLE		REGULAR PRICE	MEMBER PRICE
1910 NearCut Catalog Reprint	108 pages, paperback, no price guide	\$14.95	\$13.45
1927-29 Catalog Reprint	66 pages, paperback, no price guide, includes identification guide	\$9.95	\$8.95
1930-34 Catalog Reprint	250 pages, paperback with 2000 price guide	\$14.95	\$13.45
1930-34 Catalog Index	Index for above	\$2.00	\$1.80
1949-53 Catalog Reprint	300 pages, paperback, no price guide	\$19.95	\$17.95
Cambridge Colors II (New)	Hardcover with price guide	\$19.95	\$17.95
Caprice	200 pages, paperback, no price guide	\$19.95	\$17.95
Decorates	136 pages, paperback, no price guide	\$14.95	\$13.45
Etchings (2nd Edition)	102 pages, paperback, no price guide	\$17.95	\$16.15
Etchings, Non-Catalogued	70 pages, paperback, no price guide	\$12.95	\$11.65
Etchings: Blossomtime	26 pages, paperback, no price guide	\$7.95	\$7.15
Etchings: Candlelight	30 pages, paperback, no price guide	\$7.95	\$7.15
Etchings: Chantilly	44 pages, paperback, no price guide	\$7.95	\$7.15
Etchings: Diane	53 pages, paperback, no price guide	\$7.95	\$7.15
Etchings: Elaine	64 pages, paperback, no price guide	\$9.95	\$8.95
Etchings: Portia	57 pages, paperback, no price guide	\$7.95	\$7.15
Etchings: Wildflower	42 pages, paperback, no price guide	\$7.95	\$7.15
Rock Crystal Engravings	119 pages, paperback, no price guide	\$17.95	\$16.15
Rock Crystal Engravings (Listings)	Companion to above; lists all pieces in all patterns	\$9.95	\$8.95
Rock Crystal 1940 Illustrated Catalog & Price List		\$14.95	\$13.45
Rose Point - Second Edition	146 pages, paperback, no price guide	\$19.95	\$17.95
Pharmaceutical Catalog No.8 1915-1920 Reprint	68 pages, paperback, no price guide	\$9.95	\$8.95
Cambridge Arms compendium		\$7.95	\$7.95
1916 General Catalogue		\$13.95	\$13.95
Rose Point Program - DVD (Postage \$3.00)		\$19.95	\$17.95
Caprice Program - DVD (Postage \$3.00)		\$19.95	\$17.95

## How to Order by Mail or from the NCC Website

Send orders to:

NCC • PO Box 416 • Cambridge, OH 43725

OHIO RESIDENTS PLEASE ADD 7.25% SALES TAX

### SHIPPING:

\$5.00 FOR THE FIRST PUBLICATION

\$1.00 FOR EACH ADDITIONAL ITEM

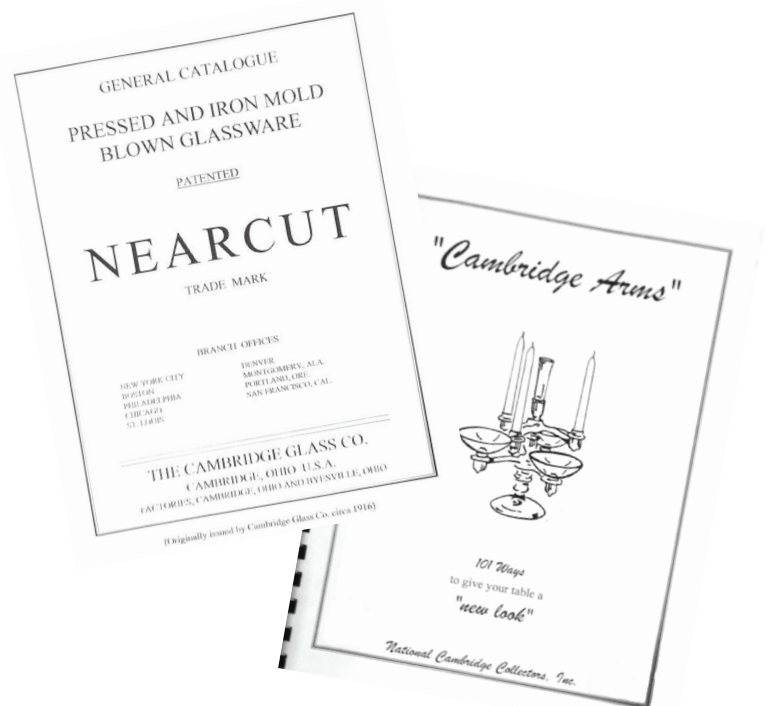
Please include your name, complete mailing address and your phone number or e-mail address.

Payments by check or Money Order only, payable to NCC

Books may also be purchased on the NCC website,

[www.cambridgeglass.org](http://www.cambridgeglass.org).

Major Credit Cards are only accepted for web purchases.



# DEALER DIRECTORY

Dealer Directory - \$24 for 12-months, size limited by box (see below). Includes listing on NCC website.


## Advertising Rates:

1/8 page \$15      1/4 page \$20  
1/2 page \$30      Full page \$50

Electronic submissions should be emailed to:

[editor@cambridgeglass.org](mailto:editor@cambridgeglass.org)

Use Word. Mailed submissions and all payments should go to PO Box 416, Cambridge, OH 43725. Deadline is 10th of preceding month. Ads must be paid in advance. Show listings are FREE; send info to PO Box or e-mail address 60 days before event.



**Connecting Buyers & Sellers!**  
Tell us what you are looking for and we help find it.  
**CAMBRIDGE GLASS.US**  
P. Snyder 740-601-6018  
E-Mail and Find Your Glass!  
[psnyder@cambridgeglass.us](mailto:psnyder@cambridgeglass.us)  
[www.cambridgeglass.us](http://www.cambridgeglass.us)

**E-Blast**  
When you are searching for Cambridge glass, email your request and it is emailed to all members and dealers.  
P. Snyder, 1500 Edgewood Dr., Circleville, Ohio 43113

### PATTON HOUSE ANTIQUES

Specializing in Glass  
Heisey • Cambridge • Fostoria • Duncan

Factory Antique Mall  
Verona, VA off I-81. Exit 227

The Daniels, Box 547 Louisa, VA 23093  
(540) 967-1181

### Cheshire Cat Antiques

Specializing in elegant depression to mid-century era glass and vintage kitchen glass.

Francee Boches > 305-884-0335  
fboches@cheshirecatantiques.com



### Cherished Collectibles

Shopping 24 hours in our online store  
Glassware, Figurines, Collectors' Plates

[www.cherishedcollectibles.com](http://www.cherishedcollectibles.com)  
Elegant and Depression Era Glass

## Classified Ads - Reach over 1,000 avid collectors of Cambridge Glass

Edward Sawicki

### Memories Antiques

"Glass is our Passion"

Candlesticks and stemware our Specialty."

PO Box 153      646-522-1506  
Dunnellen, NJ 08812      [ejsawicki@optonline.net](mailto:ejsawicki@optonline.net)

### CRYSTAL LADY

1817 Vinton St.      Omaha, NE 68108  
**Bill, Joann and Marcie Hagerty**  
402-699-0422

Specializing in Elegant Glass & Collectibles  
[www.crystalladyantiques.com](http://www.crystalladyantiques.com)

### Glen & Carolyn Robinson White Rose Antiques

Specializing in Depression Era Glassware

2454 McFarland Road  
York, SC 29745

803-684-5685  
[gandcrobinson@aol.com](mailto:gandcrobinson@aol.com)  
[whiteroseglassware.com](http://whiteroseglassware.com)

### CRYSTALLINE COLORS

Cambridge • Fostoria • Elegant Glass  
Penny Court Mall, Cambridge - 2 booths  
Medina Antique Mall  
Medina, OH (I-74, exit 218)

Lynne R. Franks 216-661-7382

### GLASS FROM THE PAST

Maureen Gillis



[www.glassfromthepast1.com](http://www.glassfromthepast1.com)  
email: [maureen@glassfromthepast1.com](mailto:maureen@glassfromthepast1.com)

### Cambridge Nudes - Dave Small

[HTTP://CambridgeNudes.com](http://HTTP://CambridgeNudes.com)

3011 Cambridge Statuesque

Buy, Sell, Trade

[davesmall@mac.com](mailto:davesmall@mac.com)

281-376-3686



### TWEAK COLLECTIBLES

Specializing in Elegant Glass  
BUY & SELL  
WANTED: CAMBRIDGE TURKEYS  
417-742-3653  
[btummons@aol.com](mailto:btummons@aol.com)

### Virtualattic at The Glass Chalet

Specializing in  
Elegant Depression Era Glass

*Sandra L. Bridwell-Walker*

PO Box 726  
Newcomerstown OH 43832-0726  
740-492-5022 (H) 817-559-0328 (C)  
[virtualattic@sbglobal.net](mailto:virtualattic@sbglobal.net)      [theglasschalet@sbglobal.net](http://theglasschalet@sbglobal.net)

### Max Miller

Elegant American Glassware  
[www.maxmillerantiques.com](http://www.maxmillerantiques.com)

The Market Place  
10910 Katy Freeway.      713-410-4780  
Houston TX 77043      [mmxglass@aol.com](mailto:mmxglass@aol.com)

### Ohio Valley Antique Mall

7285 Dixie Highway (Route 4)  
Fairfield, OH 45014  
Cincinnati's Largest Multi-Dealer Antique Mall  
Hours: DAILY 9:00 a.m. - 9:00 p.m.

513-874-7855  
[www.ohiovalleyantiquemall.com](http://www.ohiovalleyantiquemall.com)  
[cfaxon@ohiovalleyantiques.com](mailto:cfaxon@ohiovalleyantiques.com)



### ISAACS ANTIQUES

(740) 826-4015

↔ Located in ↔

**Penny Court Mall**      **Relics Mall**  
637 Wheeling Ave      616 Main St  
Cambridge, OH      Zanesville, OH

### BAKER FAMILY MUSEUM

805 CUMBERLAND ST.  
CALDWELL, OHIO 43724  
740-732-6410

[bakermuseumnellbaker@msn.com](mailto:bakermuseumnellbaker@msn.com)

Wed & Thurs 9-4; Fri - Sat 9-5

### MARGARET LANE ANTIQUES

2 E. Main St.      New Concord, OH 43762  
Lynn Welker      (740) 826-7414

Cambridge Glass Matching Service  
Hours: Mon-Fri 10-12 AM, 1-5 PM  
or by appointment

### Our House Antiques



Linda and David Adams  
Las Vegas, NV  
1-800-357-7169



[www.OurHouseAntiques.com](http://www.OurHouseAntiques.com)  
email: [David@OurHouseAntiques.com](mailto:David@OurHouseAntiques.com)

National Cambridge Collectors, Inc.  
PO Box 416  
Cambridge OH 43725  
email: [editor@cambridgeglass.org](mailto:editor@cambridgeglass.org)  
website: [www.cambridgeglass.org](http://www.cambridgeglass.org)



## Friends of Cambridge – Annual Fund

NCC exists through member giving using an Annual Fund system to raise operating funds and to ensure the preservation of Cambridge glass for future enthusiasts. The Annual Fund uses a common member "renewal" date and NCC sends out Annual Fund materials to everyone once a year. There are no monthly reminders or monthly renewal dates. The Annual Fund is NCC's primary means of support and all Annual Fund gift recognition levels are per household and include membership for all adults within the household. Additionally, each household will receive a subscription to the Crystal Ball newsletter, unlimited admissions to the museum, and rights to vote in elections for the Board of Directors. Multiple households at the same address are welcomed. NCC is a 501C(3) organization and Annual Fund gifts are allowed as a tax deduction under Section 170 of the Internal Revenue Code.

### Levels of Membership

Patron	\$35
Benefactor - Century	\$100
Benefactor - Mardi Gras	\$200
Benefactor - Japonica	\$500
President's Circle	\$1,000

President's Circle includes Convention registration for two members in the household and one copy of any new NCC publications.

## ***The National Museum of Cambridge Glass***

***Open April thru October  
only***

