



Cambridge Crystal Ball

Published by the National Cambridge Collectors, Inc. as a resource which informs, invites and inspires people to encourage the continued preservation of the glass produced by the Cambridge Glass Company of Cambridge, Ohio for future generations.

Issue No. 495

February 2016

Convention 2016 - *Hollywood*

Light the Lights, Set Your Sights!

By Rick Jones

Get ready to hit the red carpet and make your way to Cambridge to this year's Annual NCC Convention. This year the stars will be out as we salute our favorite elegant glassware.

In recent years, our Museum and our Miami Valley Study Group have been capturing images and clips of Cambridge Glass featured in the movies and on television. Ranging from classic movies like *White Christmas*, *Top Hat*, *The Thin Man*, *The Sting* and *Prizzi's Honor*, to television shows like *Gunsmoke*, *Hawaii Five-O* to even an episode this past year of Fox's new *Empire* ... Cambridge Glass has shone brightly.

Our National Museum of Cambridge Glass has set up a special display with stills of the programs as well as the glass that was featured. It has been a **HUGE HIT** with members and guests alike. Further, Dave Rankin and our Miami Valley Study Group have posted clips of the scenes where *we* think Cambridge was the star ("move over Astaire and Bing!").

To view these video clips, please visit www.cambridgeglass.org, click on the MVSG Videos button under the Directory. Not only will this show you some

great educational programs by MVSG, but also videos of past NCC Educational Meetings and Bring and Brags. As you scroll to the bottom, note the Cambridge in Hollywood heading and click on any program to view a clip. I guarantee it will be fun.

Speaking of **FUN**, that is a pivotal part of this year's Convention and our theme **HOLLYWOOD!**. Assisted by our Creative Directors Alex Citron and Shelley Cole, we are assembling a program guaranteed to be the best time you've had at Convention in awhile. A ton of surprises will be in store. Keep your popcorn handy.

At present, the Convention will be held from Thursday morning June 23rd through a closing dinner Wrap Party on Saturday night June 25th. We might also have an

Continued on page 15

What's Inside

Convention 2016 - <i>Hollywood</i>	1
Presidents's Message	3
2016 Auction Preview.....	4
A New Year Begins at the Museum	8
Minutes of the November Meeting.....	9
Thanks For All Your Support!.....	10
2015 Annual Fund and Benefactor Listing....	11
From the Archives: Last Production.....	13
eBay Report	14

**The National Museum of Cambridge Glass
Special Auction Weekend Hours:**

Friday, March 4 - 10:00 a.m. to 4:00 p.m.

Saturday, March 5 - noon to 4:00 p.m.

National Cambridge Collectors, Inc.

PO Box 416 Cambridge, OH 43725-0416

Board of Directors

	2016	
Cindy Arent	Larry Everett	Mark Nye
	2017	
Ken Filippini	Millie Loucks	Freeman Moore
	2018	
Julie Buffenbarger	Doug Ingraham	David Ray
	2019	
Rick Jones	Lindy Thaxton	Lynn Welker

Officers

President	David Ray
Vice-President	Doug Ingraham
Secretary	Lindy Thaxton
Treasurer	Millie Loucks
Sergeant-at-Arms	Mark Nye

Director of Strategic Planning	Ken Filippini
Director of Human Resources	David Ray
Chair, Standards Committee	Sharon Miller
Chair, Endowment Committee	Doug Ingraham

Member Services

Vice President

Member Relations
Convention
Digital Media
Glass Dash
Glass Show
Study Groups
Webmaster

Rick Jones
Freeman Moore - Membership Database
Rick Jones - Convention Director
Alex Citron - Manager of Facebook Operations
Larry Everett & Frank Wollenhaupt
Sandra Bridwell-Walker & Roger Loucks
Jeannie Moore - Study Group Coordinator
David Adams

Development

Vice President

Campaigns

Events

Projects
Publicity

(vacant)
Ken & Jane Filippini - Annual Fund Directors
Larry Everett - Director of the Heritage Society
Will & Bev Acord - Auction Managers
Lynn Welker - Auction Manager
Carl Beynon - Jeweler & Scotties Project Manager
Jonathan Fuhrman

Education

Vice President

Crystal Ball
Publications
Media Productions
Research
Programming
NCC History

Larry Everett
Freeman Moore - Executive Editor
Mark Nye - Director of Publications
Dave Rankin - Director of Media Productions
Mark Nye - Archivist
Greg Vass - Director of Programming
Mark Nye - Archivist

Museum

Vice President

Public Operations

Facilities & Grounds
Collections
Merchandise Sales

Community Relations

Cindy Arent
Sandra Bridwell-Walker - Docent
Julie Davey - Docent
Sandy Rohrbough - Docent
Betty Sivard - Docent
Gary Wiseman - Docent
Carl Beynon - Director of Facilities
Lynn Welker - Director of Collections
Lynn Welker - Gift Shop Manager
Cindy Arent - Gift Shop Manager
Cindy Arent

Administration

Vice President

Accounting & Finance
Information Technology

Ken Filippini
Lisa Neilson - Office Manager
(vacant)

ADDRESS CHANGES

Please send address changes to:
Membership - NCC
PO Box 416
Cambridge, OH 43725-0416
or by e-mail to:
membership@cambridgeglass.org



CONTACT US

136 South 9th Street
Phone: 740 432-4245
nccglass@yahoo.com



David Ray, President.....
e-mail: westervillesh@hotmail.com
Lindy Thaxton, Secretary.....
e-mail: secretary@cambridgeglass.org

Heritage Society

Ensuring the preservation mission of the NCC through planned giving and estate bequests.

Members of The Heritage Society are those who have included the NCC in their wills or estate plans, thus providing the organization with a secure future.

The mission of The Heritage Society is to foster smart estate planning and to assure that NCC is not forgotten as an important beneficiary. Any pledge is meaningful and appreciated.

All Cambridge collectors - both current and future - will benefit from, and be grateful for your support.

Let us know how we can help with your future plans.

NCC Website: www.CambridgeGlass.org

Miami Valley Study Group Website: www.mvsg.org



PRESIDENT'S MESSAGE

See You at the Auction

Have you visited the NCC auction page to view the 430 lots of Cambridge glass that will be available for purchase on Saturday, March 5? Do you collect swans, flower frogs, nude stems, Caprice, Rose Point, Carmen, Royal Blue, Everglade, enamel decorations, opaques, Farber, Rubina, Near Cut, bookends, cordials, perfume bottles, silver overlay decorations, smoking items, Crown Tuscan, rock crystal cuttings, candy containers, or candlesticks? If you answered yes, then the 2016 March auction has something for you! The March membership meeting is traditionally held on Friday, March 4 at 7:30 pm followed by an auction overview hosted by Lynn Welker. On Saturday the auction preview begins at 8:30am with the auction starting promptly at 9:30am. The auction is only one month away, so it is time to make your hotel reservations. A combination of fewer gas and oil workers and more hotel rooms available in the Cambridge area has caused some hotels to offer special pricing based upon their occupancy rates. I recommend you make multiple telephone calls to find the best rate. As always, let the desk clerk know you are member of the National Cambridge Collectors.

As of January 1, all contents that were stored in the basement of the brick office building adjacent to the museum were moved to the yellow house on the back of the property. The yellow house will be used for storing auction related materials and museum gift shop inventory. Although the house is small, the use of metal shelving units provides sufficient storage to allow both committees to function effectively. Based upon the recommendations of our leasing agency, the ability to use the storage space in the basement will make the brick office building more appealing to potential renters.

2015 was an exceptional year for the National Museum of Cambridge Glass. Over the past two years, the museum committee has identified the potential for Cambridge glass sales in the museum gift shop. No longer are visitors limited to purchasing Decagon cups and saucers and shell ash trays. During my visits to the museum

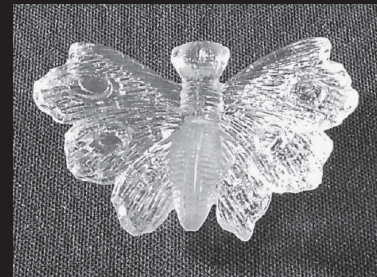
this year, I saw Rubina, keyhole ivy balls in various colors, colored water sets, Near Cut, Crown Tuscan, Moonlight and Crystal Caprice, Rose Point doulton jugs, Rose Point dinner plates, gold decorated Ebon, keyhole vases, and much more. Not only are visitors to the museum purchasing Cambridge glass, but members of the Cambridge community are supporting the gift shop by using it as a resource for purchasing birthday, wedding, and Christmas gifts. The gift shop currently obtains its inventory by purchasing glass at local auctions and receiving donations. I encourage everyone to consider supporting the gift shop by making a quality glass donation(s) during your next visit to Cambridge.

The 2016 Annual Fund materials will be mailed a couple weeks after the March auction. I want to thank the entire membership for their continued generous financial support. Although total giving was down slightly in 2015, the Annual Fund received \$46,000 in cash donations. With all the different non-profit organizations asking for money, nearly 200 of our members chose to support NCC at the benefactor level. The benefactor level is defined as giving at the Century Club (\$100) level or higher. With the cost of postage, paper, and printing increasing regularly, the annual cost of publishing and printing the Crystal Ball in 2014 was approaching \$35 per household. Instead of increasing cost of a Patron (\$35) level membership, the board of directors approved eliminating the two color issues in February and September. If you want to see every issue in color, register to receive the Crystal Ball online. Eliminating the two color issues will permit NCC to publish ten quality publications annually without increasing the minimum membership level for the near future. As you consider your financial contribution for 2016, I ask you to consider the positive impact NCC has been to you and glass collectors throughout the country over the past 43 years. Help NCC continue its mission.

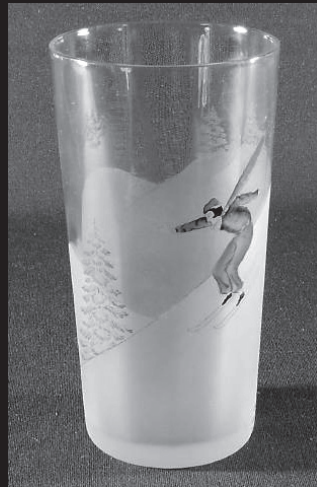
Sincerely,

David Ray
westervillesh@hotmail.com

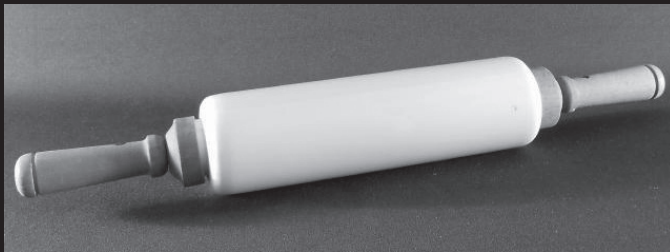
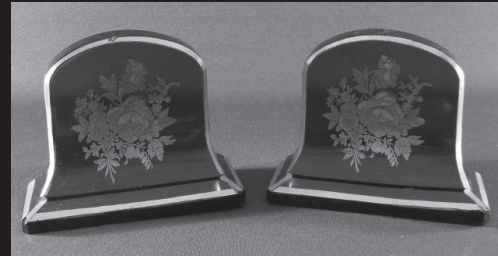
*A Preview of some of the spectacular glass offered in this year's NCC Benefit Auction - March 5, 2016
Be sure to check out the NCC website www.cambridgeglass.org for additional photos*



Auction Preview continued



Auction Preview continued



Lunch Option for Auction Attendees

Back by popular demand are Theo's scrumptious boxed lunches, delivered right to PLCC in time for the lunch break. So if you don't want to hassle running out to get something and/or want a nice healthy alternative to fast food, we've got it for you. Tax and gratuity are all included in the purchase price.

Ordering: A Theo's representative will be in the PLCC lobby from 8:30 AM to 9:30 AM on Saturday, day of the auction, to take everyone's orders. You must have cash or check and pay at time of order. They will not be able to take credit cards. Fill out an order form when you arrive Saturday morning.

Prepared Boxed Meals:

Sandwiches: \$10.00

All sandwich boxed meals include choice of broccoli raisin salad or pasta salad, chips, cookie and one bottled water or can of soda.. Mustard, Mayo & Horseradish sauce will be available. Served on the side.

Roast Beef & Cheddar:

on Cracked Black Pepper Bread with lettuce, tomato

Chicken Salad Croissant:

with lettuce and tomato

Ham & Swiss on Wheat:

with lettuce, tomato

Turkey, Bacon, & Mozzarella:

Whole Wheat with lettuce, tomato

Salads: \$10.00

All salad boxed meals come with dinner roll or homemade French bread, cookie and one bottled water or can of soda.

Chicken Caesar Salad:

mixed greens w/Caesar dressing, parmesan cheese, kalamata olives, pepperoncinis, and grilled breast of marinated chicken.

Greek Salad – our signature salad:

mixed greens w/grilled chicken, onions, tomatoes, cucumbers, marinated mushrooms, feta, kalamata, olives, pepperoncinis, croutons and our Greek inaignrette.

Smoked Turkey & Mixed Nut Salad:

mixed greens with smoked turkey, mixed nuts, raisins, shredded mozzarella, tomatoes, cucumbers, onions with choice of dressing.

Additions:

Cup of Soup: \$3.00

Side Salad w/choice of dressing: \$3.00

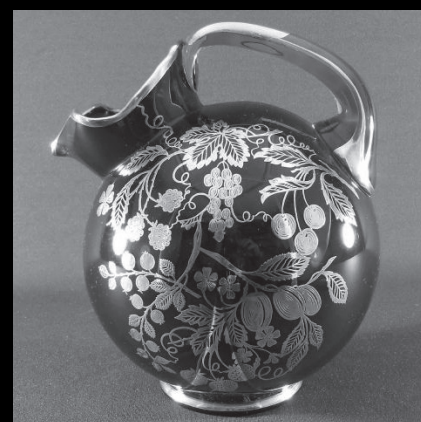
www.theosrestaurant.us



Auction Preview continued



Send in your
bids today!



A New Year Begins at the Museum

By Cindy Arent

Each year after the final day the museum is open for the season and the last motorcoach group leaves, volunteers and docents gather to celebrate what has been achieved during the year. The 2015 season was the best ever with increased sales and museum admissions, so we had a reason to be proud. NCC is very fortunate to have such dedicated volunteers and staff.

On December 21, volunteers and staff enjoyed a delicious potluck dinner and shared stories about the year. It has become a tradition to play a game each year. Those attending were divided into two teams, the Bennett family and the Orme family. These families owned The Cambridge Glass Company many years ago. This year the game was Cambridge Glass charades. Each team acted out five words relating to Cambridge Glass and the team with the lowest total time won the competition. Again this year, the Bennett Family won and are shown in the photo with their trophy.



The annual end of the year museum game of Cambridge Charades was won by the Bennett team. Seated L – R: Sharon Miller, Jeff Ross (holding the trophy) and Sandy Bridwell-Walker. Standing: Rich Bennett, Gary Wiseman, Sharon Bachna, Lisa Neilson, Jeff Leonard, Lindy Thaxton and Larry Everett. How would you act out Mardi Gras or Vanity Set?

2016 began with a Great Day Tours bus on January 2nd. The group was from the Cleveland, Ohio area. When a bus first arrives, someone goes out to the bus to welcome them and give a very brief history of Cambridge Glass and how their tour will unfold inside the museum. We also ask how many people in the group have ever heard of Cambridge Glass. Over half of the visitors in this group knew of Cambridge Glass, and one person had inherited some pieces. They enjoyed their tour and will hopefully return again with family and friends!

During January and February, the interior of the museum is cleaned and needed maintenance is done. This year, another section of the museum will be painted. Even though the museum is closed for the winter, visitors still come to the door. We always let them in to see the glassware if there isn't a major project underway.

January is also the month we work the Cambridge/ Guernsey County VCB's booth at the AAA Great Vacations Travel Expo at the Columbus Convention Center. Museum volunteers will be working on Saturday, January 23, so if you're in the Columbus area, stop by the booth. It is a fabulous travel show and we are excited to be asked to participate again this year.

More updates about winter projects will be in the March issue of the Crystal Ball and on the National Museum of Cambridge Glass Facebook page. Remember to check for postings and "Like" the page.

We hope to see you at the March auction! The museum will be open on Friday, March 4 from 10am – 4pm, and also on Saturday from Noon – 4pm.

This young couple from Boston, Massachusetts was thrilled to receive a National Museum of Cambridge Glass gift box filled with eight pieces of stemware. There were two of four different etchings, which is the trend among young people purchasing Cambridge Glass today. The assortment of etchings provides interesting conversation during a cocktail or dinner party. The first piece they unwrapped was a Marjorie etched goblet and the other etchings were Rose Point, Chantilly and Diane. What a beautiful table it would be!



National Cambridge Collectors, Inc.

Minutes of the November 7, 2015 Fall Meeting

President David Ray called the 2015 Fall Meeting of the National Cambridge Collectors, Inc. to order on Saturday November 7, 2015 at 7:00 pm. The meeting was held at Theo's Restaurant.

The minutes of the June 25, 2015 Annual Meeting were published in the September 2015 Crystal Ball. No changes or corrections were requested by the membership. Larry Everett moved to approve the minutes. Tarzan Deel seconded the motion. The 2015 Annual Meeting minutes were approved by acclamation.

Treasurer's report:

Treasurer Millie Loucks was unable to attend. David Ray indicated Millie had reported at the board meeting NCC financial results look good for the year. Museum results are up for year over year.

The Board of Directors voted to invest the endowment fund. Doug Ingraham is the chair of the Endowment Committee. The committee invested half (\$125,000) of the fund in October. That investment has already grown \$5,000. The committee is now discussing the investment of the remaining funds. The Board of Directors understands investing these funds does present risks and opportunities, but the NCC is investing for long term growth.

Reports:

Rick Jones, VP Membership, reported the 2016 Convention theme is Hollywood. A Convention committee is being assembled, which will combine the convention, glass show, and glass dash in one organization. He thanked Diane Gary for her 3 years as Convention Chairman. Show cards for the Glass Show are available at the meeting for members to take for distribution. Also, David Adams has agreed to continue as the NCC Webmaster. Freeman Moore has agreed to continue as Membership Database Administrator.

David Ray and Larry Everett reported the Museum Gift Shop sales have exceeded \$20,000 for the year, and October credit card sales for October alone were \$4,500.

Larry Everett provided a status on the new properties. He thanked Joe Miller and Jeff Ross for painting and Jack Thompson for helping with moving auction shelves to the yellow building. The realtor suggested the brick building be vacated so the entire building would be for rent; therefore, the NCC will use only the yellow building. The building improvements should be completed by early December and is still under budget.

Old Business: None

New Business:

Gary and Jill Turner are present at the Fall meeting to discuss a new Rose Point book. Gary met with the Board of Directors on Friday. A committee is being formed to look at editing and publish the new book. It would be published in print and as an E-book. A current copy is available at the meeting for review.

Upon hearing no further new business, Rick Jones moved to adjourn, second by Jeannie Moore. Approved and meeting adjourned.

Respectfully submitted,
Lindy Thaxton

Thanks for All Your Support!

By Rick Jones, VP/Member Services and Ken Filippini, Annual Fund Director

The books have been closed on 2015 and once again our Annual Fund was a terrific success. We finished the year raising \$47,830, within \$800 or so of last year's \$48,650. Given continued softness and concerns about the economy overall, we are extremely pleased that so many have so generously chosen to support NCC.

Many years ago we shifted the organization from a Club/Membership philosophy to that of a Preservation Organization, supported by Benefactors and other Friends. In fact, we changed the word "member" to "Friends of Cambridge". It is through our fellowship and shared philosophies that we build a strong organization committed to preserving our Museum into perpetuity and to keeping NCC viable as new generations of collectors come forward to carry on our mission.

Both of us fervently believe in the use of the word "Friend". We have made so many of our very best friends in life through the fellowship on the shared glass collecting passion and a true belief that the education and preservation of NCC is worth protecting and enriching. Much of this has come through meeting new people at our Annual Auction (March) and our June Convention. If you haven't made Convention in awhile, we encourage you to make it this year. It is going to be FUN (see article elsewhere in this issue).

The basic level of the classic "membership" is now a \$35 donation and those Friends are called our Patrons. There are then four higher level of support from those we call Benefactors. The levels are:

- Century - \$100
- Mardi Gras - \$200
- Japonica - \$500
- President's Circle - \$1,000

In 2015, we had 189 Friends at the Benefactor level. They represented over 75% of the total funds raised in this past year for the Annual Fund. As a thank you and acknowledgement for your outstanding support, we are pleased to again publish the list of our benefactors organized by state of residence. We have benefactors now in 34 of the 50 states!

In case you want to know, these are the states with no Friends at the Benefactor level: Alaska, Hawaii, Delaware, Georgia, Idaho, Kentucky, Maine, Mississippi, New Hampshire, New Mexico, North Dakota, Rhode Island, South Dakota, Utah, Vermont and Wyoming. Maybe we can get benefactors from these states in 2016!

2015 Annual Fund		
	#	Amount
President's Circle	8	\$8,175
Japonica	12	6,200
Mardi Gras	51	10,100
Century	118	12,120
Benefactors	189	\$36,595
Patrons	313	11,235
Active Households	502	\$47,830

The Annual Fund allows us to operate a World Class Museum, publish the Crystal Ball at a high quality level and carry out a multitude of education and preservation activities. Through your past generosity, we paid off the mortgage at the Museum, acquired the Summit molds and, most recently, acquired expansion property next door to the Museum. In 2015, we were able to pay off \$25,000 off the loan to acquire the new property. It is a great start.

While doing the above activities, we have also kept an eye pointed toward the future. We have built our Endowment Fund to over \$350,000. A great start, but with a long way to go.

As we finish what we think is the first decade of our Annual Fund, we turn our attention now to the 2016 Annual Fund. We expect to send our materials to you in late March, early April. Please watch for them and we hope that you continue to support NCC the best you possibly can. We appreciate all our Friends of Cambridge and how much you have helped fuel our growth and mission accomplishment.

Thank you again for a great 2015 and we wish you much success, good health and friendly fellowship in 2016. NCC appreciates you.

PS – please check over the Benefactor List carefully. If we have made any error – name, spelling, gift level, something else – please let us know at this email: Membership@cambridgeglass.org. We regret any errors that might have been made and look to make it right for you.

The 2015 Annual Fund and Listing of Benefactors

Doris Durham	Century	Alabama	Toby Mack & Marti DeGraaf	Mardi-Gras	Illinois
Richard Reed & Trace Parish	Japonica	Alabama	Wayne Gerlock	Century	Illinois
Clyde Coleman	Mardi-Gras	Arkansas	Jeffrey & Janice Larson	Mardi-Gras	Illinois
JoAnn Coleman & Brian Reddick	Mardi-Gras	Arkansas	Shirley & Ernie Launer	Century	Illinois
Norma Oliver	Century	Arkansas	Marjorie & Nathan Farlow	Century	Indiana
Suzanne & William Chamberlain	Century	Arizona	Sherry & Wayne Hobson	Mardi-Gras	Indiana
Grant & Pat Hafley	Japonica	Arizona	Wanda Korson	Century	Indiana
Janice Kastner	Century	Arizona	Beth Sarchet	Century	Indiana
Ruth Quintrall	Century	Arizona	Janet Wasson	Century	Indiana
Dan & Leta Heincy	Mardi-Gras	California	Marcy Allenbaugh	Century	Kansas
Ann Mang	Mardi-Gras	California	Ralph & Linda Warne	Century	Louisiana
John Maves	Century	California	Annemarie & Edward Dubois	Mardi-Gras	Massachusetts
Janice & Jim Miller	Century	California	Janet & Stephen Bemiss	Century	Maryland
Dale & Barbara Moody	Century	California	David & Lisa Helm	Mardi-Gras	Maryland
Scott & Lynne Ellen Sanders	Century	California	Nancy & Thomas White	Century	Maryland
Terry Smith	Century	California	Bill & Cynthia Alexander	Century	Michigan
Wendy Steelhammer	Century	California	Paula MacKenzie & Rodney Allen	Mardi-Gras	Michigan
Judy Veteran	Century	California	Brent & Hedi Berry	Mardi-Gras	Michigan
Betty Wanser	Century	California	Daniel Kuczewski	Century	Michigan
Marcena & Laura Welker	Century	California	Gerald & Cheryl Kuczewski	Century	Michigan
Wendy Zebert	Century	California	Donald Russell	Mardi-Gras	Michigan
Thomas Cotter & Tina Broderson	Century	Colorado	Mark Nye (lifetime)	Century	Michigan
Millie & Roger Loucks	Mardi-Gras	Colorado	Les Hansen	Century	Minnesota
Richard & Louise Baker	Century	Connecticut	Lynn & Michael Hartman	Century	Minnesota
Kathy & Shelby Nussbaum	Mardi-Gras	Connecticut	Doug Ingraham & Randy Johnson	Japonica	Minnesota
Pam Wasylik	Century	Connecticut	Mary & James Saboe	Century	Minnesota
Greg Vass	President's Circle	District of Columbia	Elaine Storck	Century	Minnesota
Jim Braue	Century	Florida	Brad Allen & Gene Cooper	Century	Missouri
Lynn Cartee & Virginia Raskin	Century	Florida	Nancy & Jim Finley	President's Circle	Missouri
Betty & William Glass	Mardi-Gras	Florida	Ralph & Kathy Litten	Mardi-Gras	Missouri
Dr. Carter Glass	Mardi-Gras	Florida	John & Peggy Scott	Century	Missouri
David & Kathy Lake	Mardi-Gras	Florida	Ruth Smith	Mardi-Gras	Missouri
Lynda & William Randolph	Century	Florida	Lyndon & Susie Tummons	Mardi-Gras	Missouri
Luene Torner	Century	Florida	Richard & Helen Rietz	Century	Montana
Mrs. Keith Ham	Century	Iowa	Dean Gattone	Century	North Carolina
Don & Lauri Carpenter	Century	Illinois	Linda Gilbert	Century	North Carolina
James & Margaret Davis	Century	Illinois			

The 2015 Annual Fund and Listing of Benefactors

Cindy & Rick Jones	Century	North Carolina	Patty and Dan Igoe	President's Circle	Ohio
Beth & David Porritt	Century	North Carolina	Louise & Dennis Jones	Century	Ohio
Kathie & Ricky Young	Century	North Carolina	Dorothy Kell	Century	Ohio
Linda Christensen	Century	Nebraska	Karla Kiikka	Century	Ohio
Nyla & Bruce Stanton	Century	Nebraska	James & Janice Laver	Century	Ohio
Ken & Jane Filippini	President's Circle	New Jersey	Jeff & Debbie Leonard	Mardi-Gras	Ohio
Sharon & Ronald Hermone	Mardi-Gras	New Jersey	Patricia & Bill Loader	Century	Ohio
Walter & June Lee	Century	New Jersey	Connie Lodge	Century	Ohio
David & Wendy Loss	Mardi-Gras	New Jersey	Jo Anne Lyle	Century	Ohio
Linda & David Adams	Mardi-Gras	Nevada	Jane & Tom Miller	Century	Ohio
Penny & Elliot Drucker	Century	Nevada	Sharon & Joe Miller	Japonica	Ohio
RaNae & Dennis Travers	Century	Nevada	Nancy Misel	Mardi-Gras	Ohio
Michael, Barbara & Mary Colella	Century	New York	Janet Mitchell	Mardi-Gras	Ohio
Donna Kleintjes	Mardi-Gras	New York	Jane & Paul Morton	Mardi-Gras	Ohio
Gloria & Michael Morris	Century	New York	Hilda & Ronald Pfouts	Century	Ohio
Barbara Ritchin	Century	New York	David Ray	President's Circle	Ohio
Melissa, Karen & Max Treier	President's Circle	New York	Ken & Judy Rhoads	Mardi-Gras	Ohio
Beverly & Will Acord	Century	Ohio	Dorothy & Squeek Rieker	Century	Ohio
D. Scott & Kathryn L. Adams	Century	Ohio	Jeff, Jill, Randall & Patrick Ross	Century	Ohio
Cindy & Mike Arent	Japonica	Ohio	Patricia Rutledge	President's Circle	Ohio
Nelda & Carl Baker	Century	Ohio	Sally Slattery	Century	Ohio
Rich, Sally, Steve & Brook Bennett	Century	Ohio	Lyle & Linda Stemen	Japonica	Ohio
Margaret Bowman	Century	Ohio	Mike, Lisa & Sarah Strebler	Mardi-Gras	Ohio
Sandy & William Bridwell-Walker	Century	Ohio	Lindy Thaxton	Japonica	Ohio
James & Sue Brown	Century	Ohio	Elaine & Jack Thompson	Century	Ohio
Scott & Joan Brown	Mardi-Gras	Ohio	Julia Wall	Century	Ohio
Phyllis Bryan	Mardi-Gras	Ohio	Lorraine, Mark & Chase Weinman	Century	Ohio
Julie Buffenbarger	Japonica	Ohio	Lynn Welker	Mardi-Gras	Ohio
Sandra & Jim Buffenbarger	Mardi-Gras	Ohio	Carl & Helen Westerh	Mardi-Gras	Ohio
William & Janet Carlson	Century	Ohio	Thomas & Carolyn White	Century	Ohio
Dave, Aloma & Brigitte Chorey	Century	Ohio	Dixie Lee Wyler	Century	Ohio
Cathy & Ed Conaway	Century	Ohio	Barbara Wyrick	Mardi-Gras	Ohio
Danny Cornelius	Century	Ohio	Frank and Vicki Wollenhaupt	Mardi-Gras	Ohio
Julie & Tom Davey	Century	Ohio	Kevin Coughlin	Mardi-Gras	Ohio
Larry & Susan Everett	Mardi-Gras	Ohio	Rose MacConkey	Mardi-Gras	Ohio
Diane & Ernie Gary	Mardi-Gras	Ohio	Shirley and Carl Beynon	Mardi-Gras	Ohio
James & Patricia Gates	Mardi-Gras	Ohio	Charles and Mary Alice Upton	Mardi-Gras	Ohio
Regina, Mark & Geoff Gerko	Century	Ohio	Vivian & Mark Dorsett	Century	Oklahoma
Nancy Guegold	Century	Ohio	Mark Thompson	Century	Oklahoma
Larry Hughes	Century	Ohio	Beverly & Ed Groshens	Century	Oregon
			Robert & Karen Arnold	Mardi-Gras	Pennsylvania
			Brad & Denise Bernstein	Century	Pennsylvania

The 2015 Annual Fund and Listing of Benefactors

Ruth & Pearley Cunningham	Century	Pennsylvania
Karen Friedly	Century	Pennsylvania
Patricia & Robert Harrison	Century	Pennsylvania
Helen & Steve Klemko	Mardi-Gras	South Carolina
Suzanne Wagar	Mardi-Gras	Tennessee
Sue & Bob Camerson	Century	Texas
Louise & Don Carson	Century	Texas
Phillip & Rosalba Cook	Century	Texas
Robert & Margaret Downing	Japonica	Texas
Ronald Engler	Century	Texas
Mary & Earl Forbes	Century	Texas
John & Lisa Lacy	Japonica	Texas
Dean Lowry & Gary Teeter	Century	Texas
Max Miller	Century	Texas
Freeman & Jeannie Moore	Mardi-Gras	Texas
Daniel & Diane Shimer	Mardi-Gras	Texas
Arthur & Vicki Simon Jr.	Century	Texas
Amy & Kay Waldorf	Century	Texas
Susan Warner	Century	Texas
Tarzan Deel Jr.	Mardi-Gras	Virginia
Jim Jones	Japonica	Virginia
John & Patricia Lanning	Mardi-Gras	Virginia
Edward & Susan Shaw	Century	Virginia
Ann Wharton	Century	Virginia
Paul DeVenzio	Century	Washington
Glen & Louise Everett	Century	Washington
Marcia & Dick Floyd	Century	Washington
Greg & Scott Greenwald	Century	Washington
Charles & Mary McKinney	Century	Washington
Gary Brammer	Century	Wisconsin
Michael Lee	Century	Wisconsin
Pamela & Chyan Wu	Japonica	Wisconsin
Sue Mitchell	Century	West Virginia

From The Archives

by Mark Nye

The reorganized Cambridge Glass Company ceased operations at the end of 1958. Sales of existing inventory continued for a while. Eventually Imperial Glass Company bought all of the molds, etching plates and other assets and moved them to Bellaire. Certain company files and records were also moved to Imperial. Eventually Super Glass moved into the factory and operated as the Cambridge Glass Company. Eventually, it too ceased operations and the building once again began empty. Through all this a number of original Cambridge Glass Company records (both old and new companies) remained in the building in assorted vaults and storage rooms. At some point, a number of ledger books and other materials were removed from the buildings and sold on the open market. Some, but not all, of this material has found its way to the NCC, Inc collection of factory records. Hopefully, someday it will all be recovered and acquired by NCC, Inc.

Vandals gained access to the building and opened storage closets, etc and randomly tossed remaining records across the office floors. Prior to the demolition of the factory buildings, Many of these records were recovered and are now in the NCC, Inc. archives..

Based on verbal history from the last managers and officers of the company it was a generally accepted fact the last production of glass by the Cambridge Glass Company occurred in late 1958. Nothing else was known. From records found at the factory and now in the NCC, Inc archives it has been determined when the last glass was made and in what colors. At this time we do not know what was made but hopefully some day that information will be found.

Among the records retrieved from the factory environs, was a file of 1958 raw material usage reports. Recorded in these reports were the number of pots of lime glass, lead glass and colored glass melted and worked out. The last report in the file was for the week ending December 20, 1958. During that week 11 pots of melted lime glass were worked as were 5 pots of lead glass. The latter would have been crystal or clear glass. In addition, a total of four pots of colored glass were melted and worked out. The colors were Smoke, Moonlight, Mandarin Gold and Amethyst.

Specific dates are not indicated other than the production occurred during the week ending December 20, 1958. The first commercial production of glass occurred in May 1902 and was the Crystal Big X Pitcher. The last production of glass occurred fifty six years and eight months later and could have been either in crystal or one of the four colors previously mentioned. We have still to learn what the identify of the last item produced.

This report is provided to keep members up with what's happening on the world's largest Internet Auction site, and focuses on Cambridge glass items that are seldom or rarely seen. Please note we cannot guarantee the accuracy of listings herein.

Welcome to the eBay Report. This column features Cambridge glass items that sold on eBay circa December, 2015 and early January, 2016. Selling prices have been rounded to the nearest dollar. Here we go:

Statuesque (Nude Stem) Line

A #3011/7 Statuesque measuring 7-3/4" tall with Forest Green bowl sold for only \$37, likely due to it having a couple of scuffs on the bowl. The capacity was not given, but it looks a claret. The same seller offered a #3011 Statuesque ashtray with Amethyst bowl. Unlike the Forest Green stem, which was listed in the Cambridge category, this piece was buried in the category Glassware – Depression – Akro Agate. Why??? No matter. Cambridge bloodhounds sniffed it out, and it sold for \$103.



A set of eight (!) #3011/1 Statuesque 9 inch banquet goblets with Carmen bowls was offered at auction for an opening bid of \$799. However, the auction ended early "because the item is no longer available." It would have been interesting to see where this set would have landed had the auction been allowed to proceed as normal. A 3011 Statuesque 7 inch comport with flared edge and Diane etching was offered at \$356 or Best Offer, and sold at an undisclosed best offer price.

Etched Tableware and Stemware

A #3400 ball shape jug etched Wildflower brought a very reasonable \$79. It's always hard for me to tell just by a seller's photograph whether I'm looking at a 64 ounce or an 80 ounce jug.



A set of four #3400/27 flat tumblers in Peach Blo with Apple Blossom etching sold for \$200. One had a small acid spill. This is caused by a portion of the wax resist flaking off, or by the hydrofluoric acid getting under the wax resist, causing it to etch the glass on a portion of the glass where it is not supposed to be etched. It happened!



The #1670 drip cut syrup etched Rose Point sold for \$407. You don't see these come up for sale very often, and the bidding level proves it. A #3400/55 cream soup and saucer in Heatherbloom etched Gloria bloomed at \$103.

A #932 Round Dinnerware 10-1/2 inch cake tray plus six #931 individual cake trays (plates) in Peach Blo with Rosalie etch were served up for \$120, but consumed at an undisclosed Best Offer price. Though part of the Round Dinnerware line, the tray and matching plates are actually square with



rounded corners. As I look at these, it occurs to me that a small *square* plate is probably the best way to serve a slice of cake. Think about it!

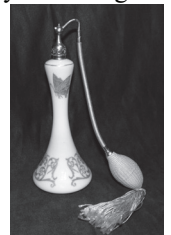
Enamel and Gold Decorations

A #3500/41 10" covered urn in Crown Tuscan with gold encrusted D/995 Chintz etching sold for \$107. It had some slight gold loss and scratching to one handle. The same covered urn, with gold encrusted Rose Point etching, sold for \$273.



A footed atomizer in Azurite with black encrusted etching #739 and gold decoration sold for \$172.

A lovely 7 inch atomizer in Ivory with a gold encrusted etching of a butterfly at the top and a scrolled design at the bottom sold for \$199. An identical one in Jade is shown in *Colors in Cambridge*, First Edition, Plate 8, Row 3, last item on right.



Vases

#1701 4-1/2" tall hat vase etched Chantilly sold for \$144.



A #422 Pristine 4 inch footed ivy vase with Firenze etching sold for only \$10, due to some water staining and a few flakes on the foot.



A #278 10-5/8" footed Moonlight Blue vase with Gloria etching sold for \$188, representing a 25% discount sale price.

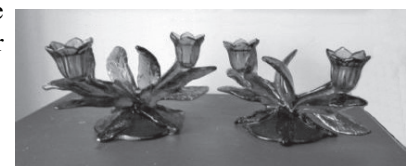
An amber 12 inch #402 vase with the #717 "Bird, berries and butterfly" etching sold for \$69. The identical vase also sold back in November for only \$58. Perhaps the higher-quality photograph in the December auction accounts for the higher selling price.



Everglade and Leaf Line

A lot of pieces in Everglade and similar patterns seem to be selling on eBay lately, so I decided to give these patterns their own section this month.

A pair of #1211 double candleabra in a dark amber shade brought \$193.



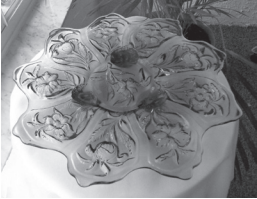


One #1211 double candleabra in Dark Emerald Green brought \$128.

A #1210 "Flower Holder" (a single candleholder with epergne-type insert vase) in crystal with a Carmen vase sold for \$218.

A pair of #1209 single candlesticks in Willow Blue were offered for an opening bid of \$165, or a Buy It Now price of \$225, but failed to sell.

A #1207 11 inch clear bowl with three feet sold for \$45.

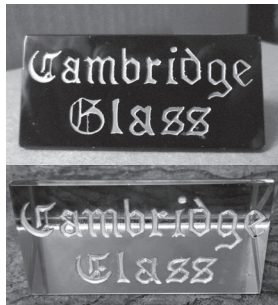


A #56 three-toed sandwich plate in Amber sold for \$100. The catalog lists this piece as 13 inches, but the seller measured it at 15 inches. Could it be yet a different item?

One seller offered the #1150 three-footed 12-1/2 inch bowl in satinized Emerald Green (which treatment Cambridge called Jade.) The seller offered a pair of #638 triple candleabra which probably originally came with the bowl in a separate auction. The bowl sold for \$93; the candleabra sold for \$66. I looked, and despite the disguised buyer names eBay now uses, I could see that the same bidder won both auctions. Whew. I hate to see things that came together originally get separated.

Miscellaneous

A Cambridge "prism" style advertising sign in Ebony with gold encrusted lettering brought \$143, despite a few chips on two corners. All I can say is that the winner was not ME. That's all right; I'm holding out for one with *platinum* encrusted lettering. And mounted with diamonds. Yeah, that's it.



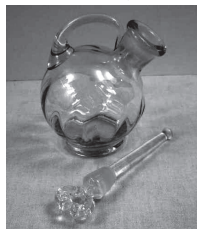
An identical prism sign in Emerald Green, with no damage, sold for \$118.

A #3500/139 Gadroon square honey dish and cover in Carmen was offered at \$100 but sold for an undisclosed Best Offer price.



An Amber #3400 ball jug plus 5 #3400/38 tumblers were offered "incognito" in the Glassware – 40s 50s 60s – Unknown Maker category for \$99, but sold for an undisclosed Buy It Now offer. These were not plain amber; they were satinized on the inside, which makes them Cambridge's Cinnamon color.

A #3400/97 "tilted" ball-shaped cologne with a fancy keyhole style dauber in crystal (intact!) sold for \$129. The dealer listed it as "light blue", but it looks like Willow Blue to me.



A #1066/4 blown candy box and cover with Carmen bowl and lid sold for \$170. The lids on these are so thin and delicate that they were easily broken, making them difficult to find today.



That's all for now. If you see any interesting Cambridge glass on eBay that you think I should be watching or reporting on, or if you have any other input, feel free to contact me at LAGlass@pacbell.net. Until next month, happy Cambridge hunting!

Convention 2016 - Hollywood

continued from page 1

Opening Night preview party on Wednesday. Stay tuned to the Crystal Ball and our NCC website for more details as the program details crystallize.

Our Saturday night program will be anchored by a Stars of Cambridge presentation by our Miami Valley Study Group focusing not only on "Everything Celestial" made by Cambridge, but some other Oscar-worthy salutes.

We will be making much more active use of our NCC website this year to notify you of program details and importantly, new hotel rates negotiated for our members, dealers and friends. Check it out now to see a new rate offer from the Comfort Inn - \$79 a night, not only for Convention, but also Auction and any other time of year. Further, our Convention and Glass Show team member Sandy Bridwell-Walker is talking to more hotels and as we have new deals, they will be posted on the website and subsequent Crystal Balls.

A new Glass Show team has been put together of Sandy, Roger Loucks, Jane Filippini and Tarzan Deel. We are expanding hours, hopefully dealers and adding more pizzazz and glamour to the showroom. We are also making our dealers stars in new ways.

I could go on, but let's save something's for next month. But please, mark your calendars and think about reserving your room for this star-studded event – **HOLLYWOOD!** - the 2016 NCC Annual Convention.

Lynn and Martha Swearingen's table set for Christmas dinner. Martha set the table with Moonlight Caprice, along with crystal bowls and shrimp ice cups. Lynn only takes credit for taking the picture. The show case in the back ground has 165 pieces of Cambridge glass, 80 of which are some of our cut Candlelight collection.



IN MEMORIAM Mac W. Otten Sr.

On December 26th, 2015, we lost a long time friend and member of NCC. Just a few days before, Dec. 16th, Mac celebrated his 90th birthday and was surprised by the many cards he received.

Mac lived in a house divided. He loved and collected Heisey glass but when he married his second wife Georgia, that all changed. Georgia was very outgoing and loved Cambridge Rose Point. Due to their individual divergent glass collecting interests, both the Heisey club and the N.C.C. benefited. Both Mac and Georgia embraced the clubs.

Mac had a long and interesting career. He attended Bowling Green University in 1943 and played basketball for the Falcons. Unfortunately his first season was interrupted by a call to duty. Mac spent 2 ½ years in the Navy and then returned to BGSU in 1946. With the help of Mac, BG won nearly 80% of their games. Over the years at BG, Mac won many honors which allowed

him to play in the NBA and to be inducted into both the BGSU and the Ohio Basketball Hall of Fame.

After graduating from BGSU Mac went on to work as an accountant for 51 years.

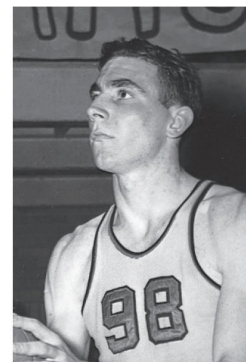
Mac was also very active in the community including the Little League, Boy Scouts and the Centerville Booster Club.

Mac and Georgia were both active members of the MVSG and will be missed by all.



MAC OTTEN

Once a Falcon, Always A Falcon





Arkansas Glasshoppers, Inc.
PRESENTS THE THIRTIETH ANNUAL
Depression Era & Vintage Glass
SHOW and SALE!

Pottery & kitchen items of the era.

Hall of Industry -State Fairgrounds

Roosevelt & Howard Streets, Little Rock, AR

Admission includes FREE PARKING!

Saturday, February 27, 2016 9am - 5pm

Sunday, February 28, 2016 11am - 4pm

ADMISSION \$5 - GOOD BOTH DAYS

GLASS IDENTIFICATION – DOOR PRIZES – DISPLAYS

SPECIAL DISPLAY BY JAMES HAYES

INTERACTIVE PRESENTATIONS:

TABLE SETTINGS BY LAURA LAVENDER IDENTIFICATION MARKS BY DANIEL ULZ

SHOW INFORMATION: (501) 868-4969

Find us on facebook

<https://www.facebook.com/pages/Arkansas-Glasshoppers-Inc/115016871880571>

bgmarglass@sbcglobal.net

Email: arglasshoppers@aol.com

website: ARGlasshopper.org



NCC Events

**2016 NCC Auction
Saturday March 5, 2016**

**2016 NCC Convention
June 23-25, 2016**

New Member Benefit

Each NCC household is allowed one free 20-word classified ad in the Crystal Ball per calendar year as part of their membership. This can be a "For Sale" or "Wanted" type of classified ad. Submit your ad by email to editor@cambridgeglass.org

Recent Finds

What have you found lately?

February 6-7, 2016

South Florida Depression Glass Club
Vintage Glass, Pottery, and Dinnerware Show
Pompano Beach, FL
http://www.sfdgc.com/SFDGshow_home.html

Glass Shows

February 13-14, 2016

International Depression Glass Club
China, Glass & Pottery Show & Sale
Sacramento, CA
<http://www.idgc.org/showcard.php>

Sparkling Clearwater Depression Glass Club
37th Annual Show & Sale
Largo, FL 33773
<http://clearwaterdepressionglassclub.org/>

February 20-21, 2016

The Houston Glass Show & Sale
Rosenberg, TX
<http://maxmillerantiques.com/houston-glass-show/>

February 27, 2016

Green River Depression Era Glass Club
39th Annual Green River Glass Show & Sale
Kent, WA
kayswede@msn.com

February 27-28, 2016

Arkansas Glasshoppers 30th Annual Glass Show and Sale
Little Rock, AR
<http://www.arglasshoppers.org/30th-annual-glass-show-sale/>

March 5-6, 2016

Garden State Depression Glass Club Show and Sale
Edison, NJ 08837
thelegantable@verizon.net

Three Rivers Depression Era Glass Society Annual Show & Sale
New Kensington, PA
<http://www.pghdepressionglass.org>

March 12-13, 2016

20-30-40 Glass Society of Illinois 44th Glass Sale and Show
Northlake, IL 60164
<http://20-30-40glassociety.org/>

Crescent City Depression Glass Society
40th Annual Antiques and Collectibles Mart
Kenner, LA 70065
<http://www.crescentcityglass.org/>

Metroplex Looking Glass Spring Show & Sale
Grapevine, TX
<http://meyershows.com/metroplexmarch.php>

2016 **"The Oldest Show in the Country"** 44th Year

Glass Sale & Show

Sponsored by The 20-30-40 Glass Society of Illinois
Visit our website at: 20-30-40glassociety.org

Specializing in: *Depression, Elegant, Carnival, Pattern, Quality
European, Art & Victorian Glass, & Pottery*

Saturday, March 12th, 2016 -10am to 5pm
Sunday, March 13th, 2016 -11am to 4pm

Door Prizes ♦ Crystal Repair ♦ Glass Identification ♦ Reference Library
Admission: \$8.00 per Person / \$7.00 with this card

Location: **THE CONCORD PLAZA MIDWEST CONFERENCE CENTER**
401 West Lake Street, Northlake, IL 60164

Free parking and shuttle bus to front door
For information, call 630-851-4504

DEALER DIRECTORY

Dealer Directory - \$24 for 12-months, size limited by box (see below). Includes listing on NCC website.


Advertising Rates:

1/8 page \$15 1/4 page \$20
1/2 page \$30 Full page \$50

Electronic submissions should be emailed to:

editor@cambridgeglass.org

Use Word. Mailed submissions and all payments should go to PO Box 416, Cambridge, OH 43725. Deadline is 10th of preceding month. Ads must be paid in advance. Show listings are FREE; send info to PO Box or e-mail address 60 days before event.



Connecting Buyers & Sellers!
Tell us what you are looking for and we help find it.
CAMBRIDGE GLASS.US
P. Snyder 740-601-6018
E-Mail and Find Your Glass!
psnyder@cambridgeglass.us
www.cambridgeglass.us

E-Blast
When you are searching for Cambridge glass, email your request and it is emailed to all members and dealers.
P. Snyder, 1500 Edgewood Dr., Circleville, Ohio 43113

PATTON HOUSE ANTIQUES
Specializing in Glass
Heisey • Cambridge • Fostoria • Duncan
Factory Antique Mall
Verona, VA off I-81. Exit 227
The Daniels, Box 547 Louisa, VA 23093
(540) 967-1181

Cheshire Cat Antiques
Specializing in elegant depression to mid-century era glass and vintage kitchen glass.
Francee Boches > 305-884-0335
fboches@cheshirecatantiques.com



Pull up a Mouse!
Shop 24 hrs a day at cheshirecatantiques.com

Cherished Collectibles
Shopping 24 hours in our online store
Glassware, Figurines, Collectors' Plates
www.cherishedcollectibles.com
Elegant and Depression Era Glass

Classified Ads - Reach over 1,000 avid collectors of Cambridge Glass

Edward Sawicki
Memories Antiques
"Glass is our Passion"
Candlesticks and stemware our Specialty.
PO Box 153 646-522-1506
Dunnellen, NJ 08812 ejsawicki@optonline.net

CRYSTAL LADY
1817 Vinton St. Omaha, NE 68108
Bill, Joann and Marcie Hagerty
402-699-0422
Specializing in Elegant Glass & Collectibles
www.crystalladyantiques.com


Glen & Carolyn Robinson
White Rose Antiques
Specializing in Depression Era Glassware
2454 McFarland Road
York, SC 29745
803-684-5685
gandcrobinson@aol.com
whiteroseglassware.com

CRYSTALLINE COLORS
Cambridge • Fostoria • Elegant Glass
Penny Court Mall, Cambridge - 2 booths
Medina Antique Mall
Medina, OH (I-74, exit 218)
Lynne R. Franks 216-661-7382

GLASS FROM THE PAST
Maureen Gillis

www.glassfromthepast1.com
email: maureen@glassfromthepast1.com

Cambridge Nudes - Dave Small
HTTP://CambridgeNudes.com
3011 Cambridge Statuesque
Buy, Sell, Trade
davesmall@mac.com
281-376-3686

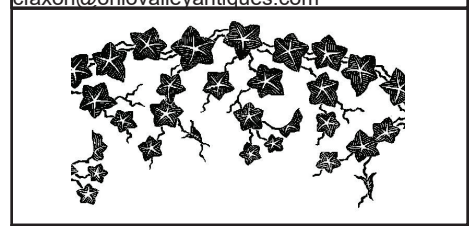


TWEAK COLLECTIBLES
Specializing in Elegant Glass
BUY & SELL
WANTED: CAMBRIDGE TURKEYS
417-742-3653
btummons@aol.com

Virtualattic at The Glass Chalet
Specializing in Elegant Depression Era Glass
Sandra L. Bridwell-Walker
PO Box 726
Newcomerstown OH 43832-0726
740-492-5022 (H) 817-559-0328 (C)
virtualattic@sbcglobal.net theglasschalet@sbcglobal.net

Max Miller
Elegant American Glassware
www.maxmillerantiques.com
The Market Place
10910 Katy Freeway. 713-410-4780
Houston TX 77043 mmxglass@aol.com

Ohio Valley Antique Mall
7285 Dixie Highway (Route 4)
Fairfield, OH 45014
Cincinnati's Largest Multi-Dealer Antique Mall
Hours: DAILY 9:00 a.m. - 9:00 p.m.
513-874-7855
www.ohiovalleyantiquemall.com
cfaxon@ohiovalleyantiques.com



ISAACS ANTIQUES
(740) 826-4015
✦ Located in ✦
Penny Court Mall **Relics Mall**
637 Wheeling Ave 616 Main St
Cambridge, OH Zanesville, OH

BAKER FAMILY MUSEUM
805 CUMBERLAND ST.
CALDWELL, OHIO 43724
740-732-6410
bakermuseumnellbaker@msn.com
Wed & Thurs 9-4; Fri - Sat 9-5

MARGARET LANE ANTIQUES
2 E. Main St. New Concord, OH 43762
Lynn Welker (740) 826-7414
Cambridge Glass Matching Service
Hours: Mon-Fri 10-12 AM, 1-5 PM
or by appointment

Our House Antiques
Linda and David Adams
Las Vegas, NV
1-800-357-7169
www.OurHouseAntiques.com
email: David@OurHouseAntiques.com




National Cambridge Collectors, Inc.
PO Box 416
Cambridge OH 43725
email: editor@cambridgeglass.org
website: www.cambridgeglass.org



The Museum Team: Seated left - right: Susan Everett, Sandi Rohrbough, Cindy Arent, Rich Bennett and Sally Slattery. Standing row 1: Mike Neilson, Lisa Neilson, Betty Sivard, Debbie Leonard, Reggie Gerko, Lindy Thaxton and Gary Wiseman. Standing row 2: David Ray, Sandy Bridwell Walker, Jeff Leonard, Sharon Bachna, Betty Davis, Larry Everett, Margene Osterberg, Marybelle Teters, Joe Miller, Sharon Miller and Jeff Ross.

Absent from photo were: Carl and Shirley Beynon, Tom and Julie Davey, Lynn Welker, Karen Treier, Sarah Carpenter and Mike Arent.

***The National Museum
of
Cambridge Glass***

***Open April thru October
only***

