



Cambridge Crystal Ball

Published by the National Cambridge Collectors, Inc. as a resource which informs, invites and inspires the continued preservation of the glass produced by the Cambridge Glass Company of Cambridge, Ohio for future generations.

Issue No. 485

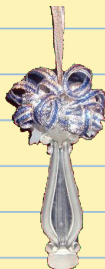
February 2015

We Want To Hear From You

I inherited my Rose Point collection from my mom. She and my dad were married in April 1939 and this was their crystal pattern. I wish that she was here today because she would love to be a member and share the interest that I have developed since her sudden passing in 2002. I have added many pieces to the collection and am always on the lookout for more. Growing up, several of the smaller serving pieces were always on our holiday table while the rest remained carefully placed on the upper shelf in our kitchen cabinets!!!

I live out of state but do plan a trip one of these days when the museum is open. I would love to "shop" in the museum store - especially am interested in the Cambridge "ornaments" because I put up a number of Christmas trees and they would be a perfect addition! I have lived with Rose Point, but am thrilled to realize that I have other items in my collections that are also Cambridge.

- a Friend of Cambridge, Missouri



Have you returned your Crystal Ball Readership Survey that was in the January issue? Your input is really needed. It's quick and easy to complete online.

Crystal Ball Readership Survey
 We are conducting this survey to determine if we are meeting your expectations for the Crystal Ball based on the issues printed in 2014.

Return this survey by US mail (see page 2), or email to editor@cambridgeglass.org or complete it online at <https://www.surveymonkey.com/s/QHXLZMH>

Demographics:
 Age < 30 30-49 50-69 > 69
 How long have you been a member? < 5 years 5-20 years > 20 years
 Have you ever visited the NCC Museum? yes no

Thinking about last year:

How often did you read the following:	Always	Mostly	Rarely	Never
President's Message				
Article: Ebay Report				
Article: Only Questions / No Answers				
Print Advertising / Dealer Directory				
NCC Quarterly Meeting Minutes				
Study Group Minutes				

How often did you read the following series:	Every time	Mostly	Rarely	Did not read
Museum Forever Raffle				
A Look Back In Time 1931				
Dreams Come Alive Beneath the Graveyard of Glass				
From The Archives: Defining Glass Terms - Part II & III				

What is your opinion of the following feature articles?	Great	Good	Poor	Did not read
Opague Colors from the 1920s in the Lamelight at November 2013 Meeting (Feb 2014)				
The Long & Bumpy Road: American Glass History (Aug 2014)				
The Elusive and Colorful World of Porcia (Sept 2014)				
The #1388 Candlestick (Sept 2014)				
The Margorie Etching (Oct 2014)				
The Gloria Etching (Nov 2014)				

Are you satisfied with the amount of information about:	Too much	Okay	Need more	No opinion
- Museum news and activities?				
- Annual benefit auction (listing photos, and results)?				
- Convention schedule and activities?				

What should we do more of?
 What should we do less of?

Thank you!

What's Inside

We Want To Hear From You 1
 Presidents's Message 3
 The Diane Etching 4
 2015 NCC Benefit Auction Preview 6
 November Program: Cambridge Blues 10
 November Quarterly Meeting Minutes 12
 2015 Convention Schedule 13
 Book Review: DeVilbiss Perfume Bottles 14
 Only Questions - No Answers 16

National Cambridge Collectors, Inc.

PO Box 416 Cambridge, OH 43725-0416

Board of Directors

Cindy Arent	Julie Buffenbarger	Larry Everett
Ken Filippini	Nancy Finley	Les Hansen
Doug Ingraham	Millie Loucks	Freeman Moore
Mark Nye	David Ray	Lynn Welker

Officers

President	David Ray
Vice-President	Ken Filippini
Secretary	Nancy Finley
Treasurer	Millie Loucks
Sergeant-at-Arms	Mark Nye

Director of Strategic Planning
 Director of Human Resources
 Chair, Standards Committee

Ken Filippini
 David Ray
 Sharon Miller
 Larry Everett - Committee Member
 Susan Everett - Committee Member
 David Ray - Committee Member
 Mike Strebler - Committee Member

Member Services

Vice President

Member Relations
 Convention
 Digital Media
 Study Groups

(vacant)

Freeman Moore - Membership Database
 Diane Gary - Convention Director
 Alex Citron - Manager of Facebook Operations
 Jeannie Moore - Study Group Coordinator

Development

Vice President

Campaigns

Events

(vacant)

Ken & Jane Filippini - Annual Fund Directors
 Larry Everett - Director of the Heritage Society
 Will & Bev Acord - Auction Managers
 Lynn Welker - Auction Manager
 Joy McFadden - Show Manager
 Mary Beth Hackett - Show Manager
 Larry & Susan Everett - Glass Dash Managers
 Carl Beynon - Jeweler & Scotties Project Manager
 Frank Wollenhaupt

Education

Vice President

Crystal Ball
 Publications
 Media Productions
 Research
 Programming
 NCC History

(vacant)

Freeman Moore - Executive Editor
 Mark Nye - Director of Publications
 Dave Rankin - Director of Media Productions
 Mark Nye - Archivist
 Greg Vass - Director of Programming
 Mark Nye - Archivist

Museum

Vice President

Public Operations

Facilities & Grounds
 Collections
 Merchandise Sales

Community Relations

Cindy Arent

Julie Davey - Docent
 Sandy Rohrbough - Docent
 Betty Sivard - Docent
 Gary Wiseman - Docent

Carl Beynon - Director of Facilities
 Lynn Welker - Director of Collections
 Lynn Welker - Gift Shop Manager
 Cindy Arent - Gift Shop Manager
 Cindy Arent

Administration

Vice President

Accounting & Finance
 Information Technology

Millie Loucks
 Lisa Neilson - Office Manager
 David Adams - Webmaster

ADDRESS CHANGES

Please send address changes to:

Membership - NCC
 PO Box 416

Cambridge, OH 43725-0416

or by e-mail to:

membership@cambridgeglass.org



CONTACT US

136 South 9th Street

Phone: 740 432-4245

nccglass@yahoo.com



David Ray, President.....

e-mail: westervillesh@hotmail.com

Nancy Finley, Secretary.....

e-mail: jefinley@charter.net

Heritage Society

Ensuring the preservation mission of the NCC through planned giving and estate bequests.

Members of The Heritage Society are those who have included the NCC in their wills or estate plans, thus providing the organization with a secure future.

The mission of The Heritage Society is to foster smart estate planning and to assure that NCC is not forgotten as an important beneficiary. Any pledge is meaningful and appreciated.

All Cambridge collectors - both current and future - will benefit from, and be grateful for your support.

Let us know how we can help with your future plans.

NCC Website: www.CambridgeGlass.org

Miami Valley Study Group Website: www.mvsg.org



PRESIDENT'S MESSAGE

We Want Your Input

Hopefully you have taken a few minutes during the past month to visit the 2015 auction page on the NCC website. David Rankin uploaded photographs of each item consigned to this year's benefit auction. Many high-quality pieces of Cambridge glass have been consigned, so I anticipate much competitive bidding at this year's auction. On Friday evening, the auction preview will be from 6:30-7:30 pm prior to the start of the March Membership Meeting. On Saturday, the auction preview will resume at 8:30 am with the auction beginning at 9:30 am. If you are unable to attend the auction in person, the auction committee has carefully outlined the steps necessary to place your absentee bid. I want to thank the auction committee, the consignors, and the volunteers who have helped organize the 2015 auction. It is going to be great!

In the January issue of the Crystal Ball, Freeman Moore requested your feedback on the type of articles for the Crystal Ball that interest you most. The survey takes only 5 minutes to complete and can be submitted online or returned through the mail. The data collected from this survey will help shape the format of future issues of the Crystal Ball. If you have specific recommendations or ideas for future articles, please submit those to editor@cambridgeglass.org. Thank you for your input.

Over the past two years, Diane Gary has asked each convention attendee to complete a convention survey. As you can imagine, the data she receives is sometimes contradictory. Some members feel convention is too short, while others think it is too long. Some members feel there are too few educational programs, while others feel there are too many. Some members feel there is too much free time, while others feel there is too little. Some members feel convention should end on Sunday, while others feel strongly convention should end on Saturday. Some members think the food is a good value, while others feel it is too expensive and of poor quality.

Based on the comments received from the convention surveys, I appointed a membership committee to explore options for improving annual convention. The greatest challenge for implementing change results from the limited resources available in the Cambridge area. The Pritchard-Laughlin Civic Center is the only reasonably-priced and sufficiently-large venue in the Cambridge area that can host the convention, glass show and educational programs. Diane has been working for weeks to find an alternative venue to host the convention picnic.

There are a couple of nice options but, if it rains, these venues cannot support groups larger than 45-50 people. With an aging membership, some have suggested moving the convention and glass show to a hotel and convention center so our elder members can fully participate and enjoy all convention activities without needing to drive from one location to another. For many years, annual convention was held at the Shenandoah Inn & Truck Stop located approximately 10 miles east of Cambridge. Although the truck stop was not a 5-star full service hotel and convention center, most members who attended convention during those years share fond memories of going from room to room visiting with fellow Cambridge glass collectors in a relaxing and informal setting. Holding the glass show and annual convention at a full service hotel and convention center would require moving convention to a different city. Many suggestions have been offered to improve annual convention, but making a significant change will not be easily accomplished.

The membership committee created and mailed (or emailed) each household a survey with questions related to annual convention. The committee's goal is to collect as much data as possible from the membership so we can make an informed recommendation about what the membership feels is most important and what, if any, changes are needed to make annual convention a better-attended and a more fulfilling event. Ultimately, we want to create an annual event that appeals to the majority of our members and inspires everyone to participate. From the data we collect from the survey, the committee will present a report to the membership at the 2015 annual convention. The committee hopes to have preliminary results for the March membership meeting, so please complete and return your survey as quickly as possible.

More than three years ago, the board of directors allocated money for the purchase of lighting and video equipment to facilitate the videotaping of all educational programs. Under the leadership of Dave Rankin and assistance from Larry Everett and Frank Wollenhaupt, every educational program over the past three years has been recorded. Other than the Rose Point and Caprice programs, each of the programs has been uploaded to the NCC website. The Rose Point and Caprice educational programs are available for purchase on a CD through the NCC website or at the museum.

I look forward to seeing you at the March auction.

David Ray
westervillesh@hotmail.com

The Diane Etching

By Hedi and Brent Berry



[Editor's note: This is the last of five presentations given at the June 2014 convention.]

We are very excited today to be able to give this presentation on the Diane etching #752. We don't know everything, and invite you to share your ideas and information. We've learned so much just preparing for this presentation and want to share with you what we have found out.

To set the context for the introduction of the Diane etching, let's look at what was happening in 1931. Herbert Hoover was President and the population was about 124 million people, about 25 % of what it is today. Some major events include "The Star-Spangled Banner" becoming the national anthem. In 1931, unemployment was at 16% on its way up to 25%. Al Capone had been sentenced to 11 years in prison for tax evasion. The Empire State Building was completed. Prohibition was still in effect, but the national committee was formed to repeal prohibition which occurred later in 1933. The great depression is in full swing. The dust bowl was underway. 1931 definitively saw some hard times in our country.

The Cambridge Glass Company introduced the Diane etching in the October 1931 issue of *China, Glass and Lamps* magazine: "An exquisite line of domestic manufacture made in full stemware, flatware and dinnerware."

For us, this was our first pattern that got us started in glass collecting. We were at a Pontiac Michigan antique mall and found a Diane console set at a very reasonable price. Hedi's dad was surprised that Brent bought it, and his future wife really liked it, and that's what started it all.

Let's talk about some of the different colors. In the early 1930s, several colors were available: Willow Blue, Amber, Peach Blo, Gold Krystol, Forest Green,



Heatherbloom, Emerald Green, Carmen, Crown Tuscan, as well as crystal. We believe these are the production colors, with some colors more abundant than others. Amber is probably the easiest. We've also seen

examples of Diane on royal blue. The pieces in royal blue are occasional items, such as a lamp. Has anyone seen Diane on ebony? We have not. Let us know if you have any unusual colors. I would like to point out that Gene Florence's book "Treasures Of Very Rare Depression Glass" [Collector Books, 2003] shows an amethyst silver decorated 3400/4 4-footed bowl. We know of a lamp using an amethyst gold encrusted 1242 vase, listed in a 2001 Florida auction.



In the later years from 1940 on, with the exception of selected Crown Tuscan blanks, Diane became a crystal pattern with optional gold trim and encrustation. By the late 1940s through 1954, production was limited to crystal. So the conclusion we can draw is that anything in color, except for Crown Tuscan, was made in the first nine years of production from 1931-1940. Thus, the colors are the some of the oldest in the pattern.

Now, let's talk about the lines. The most common line that we see is the 3122 line which was produced from 1931 to 1954. The 1066 line (aurora) was produced in 1931 and there are some collectors that have Diane on 1066 in their collection but we don't (not yet but hopefully soon!). The 3106 stemware line was produced in 1934, and the 3575 (Stradivari) was produced in 1930s to 1940s.



In addition to those major lines, there were other stemware lines that carried the Diane pattern. The 3104 cocktails, 3120 cordials, 3500, 7801 hollow stem saucer champagne, and also the sherry in the 7966 line. We

started on a side tangent of collecting cordials, but they are hard to find.

The Diane pattern was also available on a variety of tumblers, both pressed and blown. It can be found on an amazing number of jugs (10), including the 3400, 3900, decanters, cordial bottles, and cocktail shakers.



It's everywhere! It was produced for such a long time so it can be found on a variety of items. The dinnerware was primarily in the 3400 line. It was an extensive line; including service plate, dinner plate, salad plate, bread & butter, after dinner cup and saucer, bowls, cream and sugars, 5 different salt & peppers, oil bottles, and more. Some items are very reasonably priced for the beginning collector.

In addition, there are many other decorative pieces. They include 6 different types of candlesticks, 9 different candy boxes, and 23 different vases.



Some of the treatments include gold encrusting on Crown Tuscan items. The 1940 price list offered 161 different crystal items with gold encrusting. A gold encrusted luncheon set was offered in Diane, but not a dinner set. It is interesting that the company would offer gold encrusting in one set, but not another.

The 1940 price list contained a listing of 22 pieces of Crown Tuscan with gold encrusted Diane. By far, that



is the easiest color to find after crystal. For us, the next color easy to find is amber; although, that's not supposed to be true. Brent found an amber gold encrusted bowl for a Christmas present one year, and then Hedi was able to find 2 items at the show and the glass dash. You never know what you will find, so keep looking.

Some of the additional treatments available include plates and platters with silver border. There are also examples of Diane combined with other patterns such as Portia. We have an example of a Crown Tuscan relish with Diane and Chintz, which is kind of unusual.

In the 1949 catalog produced as the business starts to wind down, there are 71 items listed in crystal Diane and nothing listed as gold encrusted. Crown Tuscan with Diane is only listed with 12 items. The production is severely cut back. The 1953 price list listed about 100 different items and regular production stopped in 1954 after 23 years.



Why Diane? Why that pattern? What's so appealing? To me, it's beautiful and very distinctive. I can easily recognize it from a distance. The "horse shoe" and flowers are easily recognizable. When you're just starting out, it helps to have a pattern that's easy to recognize. It's obtainable. If you're at a show or antique market, it's very likely that you will find examples because there was so much of it made. So, even if you see a crystal stem or salad plates, you're going to see Diane items. It can be found reasonably priced. And as most of us know in Cambridge, there is a large variety of items. Just because it's not supposed to exist, doesn't necessarily mean that it doesn't. For example, we have a light emerald gold encrusted bon-bon that's not supposed to exist.



We thank you for your time and interest in the Diane etching and would like to hear from you about any unique Diane finds. ■

References:

- * Miami Valley Study Group website <http://www.mvsg.org>
- * NCC Catalog reprints: 1930-34, 1940, 1949-53
- * Cambridge Price List: 1940, 1953
- * "Diane" by Mark Nye, Crystal Ball July 1983.

*A Preview of some of the spectacular glass offered in this year's NCC Benefit Auction - March 7, 2015
Be sure to check out the NCC website www.cambridgeglass.org for additional photos*



Auction Preview continued



Auction Preview continued



Lunch Option for Auction Attendees

Back by popular demand are Theo's scrumptious boxed lunches, delivered right to PLCC in time for the lunch break. So if you don't want to hassle running out to get something and/or want a nice healthy alternative to fast food, we've got it for you. Tax and gratuity are all included in the purchase price.

Ordering: A Theo's representative will be in the PLCC lobby from 8:30 AM to 9:30 AM on Saturday, day of the auction, to take everyone's orders. You must have cash or check and pay at time of order. They will not be able to take credit cards. Fill out an order form when you arrive Saturday morning.

Prepared Boxed Meals:

Sandwiches: \$9.00

All sandwich boxed meals include choice of broccoli raisin salad or pasta salad, chips, cookie and one bottled water or can of soda.. Mustard, Mayo & Horseradish sauce will be available. Served on the side.

Roast Beef & Cheddar:

on Cracked Black Pepper Bread with lettuce, tomato

Chicken Salad Croissant:

with lettuce and tomato

Ham & Swiss on Wheat:

with lettuce, tomato

Turkey, Bacon, & Mozzarella:

Whole Wheat with lettuce, tomato

Salads: \$9.00

All salad boxed meals come with dinner roll or homemade French bread, cookie and one bottled water or can of soda.

Chicken Caesar Salad:

mixed greens w/Caesar dressing, parmesan cheese, kalamata olives, peppercornis, and grilled breast of marinated chicken.

Greek Salad – our signature salad:

mixed greens w/grilled chicken, onions, tomatoes, cucumbers, marinated mushrooms, feta, kalamata, olives, peppercornis, croutons and our Greek inaignrette.

Smoked Turkey & Mixed Nut Salad:

mixed greens with smoked turkey, mixed nuts, raisins, shredded mozzarella, tomatoes, cucumbers, onions with choice of dressing.

Additions:

Cup of Soup: \$2.25

Side Salad w/choice of dressing: \$2.25

Additional Beverage: \$1.00

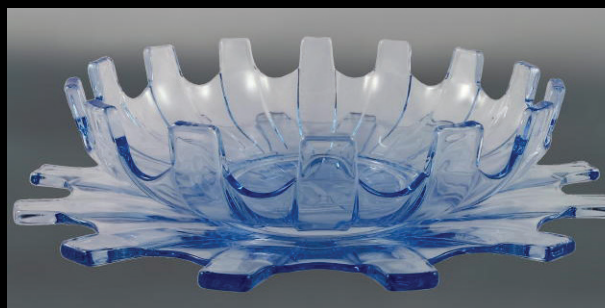
www.theosrestaurant.us



Auction Preview continued



Send in your
bids today!



November 2014 Program - Cambridge Blues

by Greg Vass

Approximately 70 members gathered at Theo's Restaurant in Cambridge Ohio for the November Membership Meeting and Program. Lynn Welker moderated the program with input from audience members. The display of blue items was outstanding, with items provided by numerous members to illustrate the various blues made by Cambridge over the years. Everyone left learning something, with some people planning to go home and determine which of their blue glass florescences under a black-light.

If you were not able to attend in person, I would encourage you to look at the video of the program and ask questions. The pictures provided here represent just some of the highlights of the display. Suggestions are always welcome for the next November program topic.



Lynn Welker ponders a question.



A colorful assortment of "Show & Tell" items.



The left most portion of the display features the oldest blue colors.



The right most portion of the table concludes with some experimental blues.

Cambridge Blues



From the left, the oldest blues are Turquoise and Cobalt Blue, followed by Azurite



The turkey is a good example of Bluebell. Willow Blue was used for a variety of items.



The popular Royal Blue is followed by Moonlight and Windsor Blue.

National Cambridge Collectors, Inc November 1, 2014 Quarterly Meeting

President David Ray called the November 2014 Quarterly Meeting of the National Cambridge, Collectors, Inc. to order on Saturday November 1, 2014 at 7:00 pm. The meeting was held at Theo's restaurant banquet room.

Upon hearing no corrections, the minutes of the June Annual Meeting were approved as printed in the September 2014 Crystal Ball.

Vice President's Reports:

David stated that since Cindy Arent, Ken Filippini and Millie Loucks were not able to attend tonight, there would be no VP reports at this time.

Other Business:

David Ray invited Larry Everett to report on the new property: Larry expressed his thanks to Cindy Arent & Lindy Thaxton, Jack Thompson and all the people who have worked so very hard on the acquisition and cleanup of said properties. Jack successfully negotiated a fair price for our purchase. Larry and his team worked on many issues on getting the yellow house ready for rent and the basement of the brick building ready for our use. Their volunteer efforts saved our club a great deal of money. Larry mentioned that there had been a work session & open house in September, all members were invited. He acknowledged that many were not able to attend, but the session went very well. We have been very fortunate that many members have donated needed items, including a new furnace and air conditioner for the yellow house. Anyone who would like to view the property, just contact us and we will be happy to show you around. We are hoping to have the yellow house ready for rent by the first of the year. This will generate income towards paying down the mortgage.

David invited Freeman Moore to give a report on the Crystal Ball. Freeman announced that he has completed his first year as editor, without any major complaints while keeping on schedule and budget. We need a new eBay editor; Larry Everett has stepped down from that job. The January issue will include a survey to collect feedback about what is liked the best, or what you might like to see changed. The February issue is the color issue and will feature the auction items. All online issues will be in color and occasionally include extra photos that could not fit in the printed copy due to space constraints. Freeman reminded everyone that they can receive the Crystal Ball electronically as well as paper.

David invited Diane Gary for a convention report: Diane announced that next year's convention theme will be "Ebony & Ivory". She also thanked all those who completed her survey, which included an evaluation, it was very helpful. Most of the comments were about the scheduling; e.g. too much going on and with programs overlapping. Next year we are planning a two day show and convention, with an additional dinner on Thursday evening. The show will open on Friday around 1:00 to around 5:00. There will be two full days of programs and activities, including a tour of the Mosser factory, finishing up on Saturday night.

A member expressed some concerns about the expense of guest speakers at the convention. She pointed out that we should seek volunteers for the occasion. Another concern she had was the scheduling of the convention. The length and times of the show and convention activities have been changed every year during the past few years. Perhaps it would be beneficial to stick with one format so people could plan accordingly.

Mark Nye made a motion to adjourn and Jeannie Moore seconded . Meeting adjourned for "show and tell" with the program "Cambridge Blues" following.

Respectfully submitted,
Nancy Finley



“Ebony and Ivory”



2015 CONVENTION SCHEDULE

(TENTATIVE)

WEDNESDAY, JUNE 24

1:00 pm Board Meeting National Museum of Cambridge Glass

THURSDAY, JUNE 25

1:00 pm	Registration opens	Pritchard Laughlin Galleria
2:00 pm	Glass Tour Mosser Glass	9279 Cadiz Road
5:00 pm	Cocktail Reception	Pritchard Laughlin Galleria
6:00 pm	Opening Dinner Buffet	Pritchard Laughlin Galleria
7:30 pm	Annual Meeting	Pritchard Laughlin Galleria
8:00 pm	Educational Program Speaker, TBD	Pritchard Laughlin Conference Room

FRIDAY, JUNE 26

8:00 am	Registration opens	Pritchard Laughlin Galleria
9:30 am	First Timers and Mentors Program	National Museum of Cambridge Glass
10:30 am	Educational Program	Pritchard Laughlin Conference Room
1:00 pm	Opening of Glass Show and Sale	Pritchard Laughlin Exhibit Hall
5:00 pm	Closing of Glass Show and Sale	
5:30 pm	Cocktail Reception	Pritchard Laughlin Galleria
6:15 pm	Banquet Dinner	Pritchard Laughlin Galleria
	Introductions, Awards, and Presentations	
8:15pm	Bring & Brag and Glass Identification	Pritchard Laughlin Conference Room

SATURDAY, JUNE 27

7:00 am	Glass Dash – Early Bird Admission	St. Benedict’s Gymnasium
8:30 am	Glass Dash – Regular Admission	St. Benedict’s Gymnasium
11:00 am	Glass Dash closes	
11:00 am	Opening of Glass Show and Sale	Pritchard Laughlin Exhibit Hall
12:00 pm	Educational Program	Pritchard Laughlin Conference Room
2:00 pm	Educational Program	Pritchard Laughlin Conference Room
4:00 pm	Closing of Glass Show and Sale	
5:00 pm	Farewell Picnic	Georgetown Winery

SUNDAY, JUNE 28

1:00 pm Cambridge Glass Workers Reunion National Museum of Cambridge Glass

Book Review by Frank Wollenhaupt

I recently added a new book to my Cambridge library. It's the work of Marti DeGraaf & Toby Mack, long time NCC members, collectors and dealers of Cambridge Glass.

I know from the title, you don't see how this connects to the Cambridge Glass company but it does. It's a book on DeVilbiss perfume bottles but it also covers the glass companies that supplied blanks to them from 1907 to 1968.

In size this is a large book (12" x 9 1/2") with nearly 300 pages. The story is told in hundreds of great color photographs and a lot of company history throughout.

This book also clears up a perfume bottle mystery. That mystery had to do with why Rich Bennett was finding so many perfume bottles in the dump without the foot. I think the answer can be found on page 155 in the book.

If you collect perfume bottles or just want a great book on Cambridge Glass perfumizers, you need to add this book to your library. ■

.....



ISBN 0764345761, October 2014
Schiffer Publishing



Tall perfumizer with a Cambridge Glass Company supplied Ivory bottle and Cambridge etched and decorated Dresden pattern. Note the blue enamel encrustation in the etching.



Perfumizer with Cambridge Glass Company Azurite bottle and Cambridge etched decoration number D/616, gold enamel on raised pattern and foot. Black enamel etching background (1923) Height 6.75".

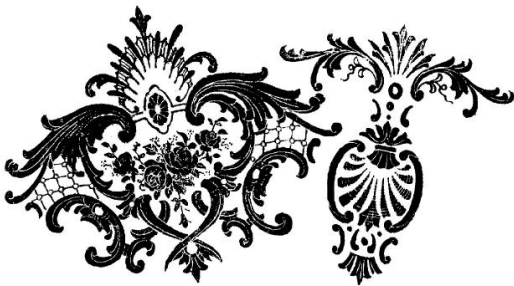
Perfumizer appears in the 1923 salesman's portfolio, but not in the retail catalog. Supplied by the Cambridge Glass Company, it is a crystal bottle covered with high-gloss black enamel and engraved to clear in a floral pattern (1923). Height 9".



Limousine Perfume Spray with ebony bottle by the Cambridge Glass Company with gold enamel band and gold finished spray fittings.

2015 "The Oldest Show in the Country" 43rd Year
Glass Sale & Show
 Sponsored by The 20-30-40 Glass Society of Illinois
 Visit our website at: 20-30-40glassociety.org
 Specializing in: *Depression, Elegant, Carnival, Pattern, Art Glass, Victorian Glass, & Pottery*
Saturday, March 14th, 2015 - 10am to 5pm
Sunday, March 15th, 2015 - 11am to 4pm
Door Prizes ♦ Crystal Repair ♦ Glass Identification ♦ Reference Library
 Admission: \$8.00 per Person / \$7.00 with this card
 Location: **THE CONCORD PLAZA MIDWEST CONFERENCE CENTER**
 401 West Lake Street, Northlake, IL 60164
 Free parking and shuttle bus to front door
 For information, call 630-851-4504

Reciporcal advertisement



MarDi Enterprises
 is pleased to
 announce their
 new website:
mardiglass.com

We have been collecting glass for nearly 50 years and the time has come to downsize the collection and share some of this amazingly beautiful glass. We are offering our private collection of over 2000 pieces of Cambridge glass. Our specialty is Rose Point, but we have many different colors and patterns.

For more information please visit our website
mardiglass.com
 email: mardiglass2@gmail.com
 Phone: 206-714-8435 or 425-672-0273

Paid advertisement

CAMBRIDGE & OTHER GLASSWARE COLLECTION

*Incredible Sale from
 3 Personal Collections*

For price and complete list contact:
 Angela Honeycutt
 (434) 432-0181 or
 (434) 251-1443
 Email ahcutt25@gmail.com



There is enough
 inventory to stock a
 small booth

Sale items include:

- **Heather Bloom** (plates, cups & saucers, stems, etc. in Gloria)
- **Carmen Mount Vernon** (jug, plates, goblets & relish)
- **Moonstone Flying Lady Bowl**
- **Nude Stems** (a collection of 10 cocktails)
- And so much more...



ONLY QUESTIONS - NO ANSWERS

By Frank Wollenhaupt (fewvic303@sbcglobal.net)

In late October, I received an email from one of my NCC friends on the left coast. Two odd (weird) candleholders had been spotted and she was wondering if I had any information on them.

The one candleholder was the Pristine #496 Table Architecture. From first glance you would say it was a Cambridge item but after a close examination, it isn't. First off, it does have a real faint MMA acid mark on the underside. This mark tells us that it was made for the Metropolitan Museum of Art. I think it was produced in the 1980's or 90's. Georgia Otten first brought it to my attention because she was looking to purchase one of the glass bowls that went with the set. The second reason it isn't Cambridge is because Cambridge polished every side of the candleholder. That polishing had to add a lot to the cost of this item. But it was one way to make sure that every flat surface had no waves and was indeed flat. See the July 2000 Crystal Ball for a related article.



The second candlestick was a real mystery. Someone took the basic Cambridge candlestick and made quite a few changes.

Let's go back in time a few years. Fade out to the time when Imperial was going out of business, their inventory and molds were being sold off (Crystal Ball May 1985). Our club with the help of Willard Colb was able to acquire a lot of important molds but many of the common



molds were purchased by domestic glass companies and some foreign companies. This is one of the items that I believe went overseas and then went thru a re-design.

First off, the candlestick started life as the #648/19. A nice one light ring stem candlestick with a collar for a bobèche. The Cambridge candlestick was made in three pieces. The body of the candlestick, the ring stem was pressed in a mold. It was then passed to another worker that made the foot from a gather of glass. The bobèche was a separate mold completely.



If you look at this new "Ring" stem candlestick, you can see that the foot, the ring stem and the bobèche are all pressed as one piece. This would save time and money but could no longer be called "hand made."

Please look at the photo's and if you have any questions, please email them to me.

I have had several questions about the different parts of a mold and how it works. I have consulted the moldy brothers and hope to have a story about the workings of a mold soon.



If you need a "Cambridge fix" go to the website and drool over the auction photos. Make your "must-have" list and make plans to attend the auction. If you can't attend, you can do mail bids.

Hope to see you there.



Arkansas Glasshoppers, Inc.
PRESENTS THE TWENTY-NINTH ANNUAL
Depression Era & Vintage Glass
SHOW and SALE!

Depression era patterns & colors, plus
Cambridge, Fostoria, Heisey, Imperial, Tiffin,
pottery & kitchen items of the era.

Hall of Industry -State Fairgrounds

Roosevelt & Howard Streets, Little Rock, AR

Admission includes FREE PARKING!

Saturday, February 28, 2015 9am - 5pm

Sunday, March 1, 2015 11am - 4pm

ADMISSION \$5 - GOOD BOTH DAYS

GLASS IDENTIFICATION

DOOR PRIZES & DISPLAYS

SHOW INFORMATION: (501) 868-4969

Email:

bgmarglass@sbcglobal.net

or: arglasshoppers@aol.com

NCC Events

**2015 NCC Auction
Saturday March 7, 2015**

**2015 Convention
June 25-28, 2015**

NCC welcomes the
following new members

Mandy McGlumphy OH
Michael McGlumphy OH

Recent Finds



Pomona Desk Set

CLASSIFIEDS

Want to buy or sell? Your ad could be here for only
10 cents per word.

Glass Shows

February 7-8, 2015

International Depression Glass Club
China, Glass & Pottery Show & Sale
Sacramento, CA
<http://idgc.org/showcard.php>

Sparkling Clearwater Depression Glass Club 35th
Annual Depression Glass, China & Pottery Show & Sale
Largo, FL
<http://clearwaterdepressionglassclub.org/>

February 14-15, 2015

Austin Looking Glass Show/Sale
Austin, TX
<http://www.meyershows.com>

February 20-22, 2015

The Houston Glass Show & Sale
Rosenberg, TX
<http://www.maxmillerantiques.com>

February 28, 2015

Green River Depression Era Glass Club.
38th Annual Green River Glass Show & Sale
Kent, WA
kayswede@msn.com

February 28-March 1, 2015

Arkansas Glasshoppers 29th Annual
Depression Era & Vintage Glass Show & Sale
Little Rock, AR
arglasshoppers@aol.com

March 7-8, 2015

Garden State Depression Glass Club
38th Semi Annual Show and Sale
Edison, NJ
thelegantable@verizon.net

Three Rivers Depression Era Glass Society
38th Annual Show & Sale
New Kensington, PA
<http://www.pghdepressionglass.org>

March 14-15, 2015

20-30-40 Glass of Society of Illinois Glass Show & Sale
The Concord Plaza Midwest Conference Center
Northlake, IL
<http://20-30-40glassociety.org/>

Metroplex Looking Glass Show
Grapevine, TX
<http://www.meyershows.com>

DEALER DIRECTORY

Dealer Directory - \$24 for 12-months, size limited by box (see below). Includes listing on NCC website.


Advertising Rates:

1/8 page \$15 1/4 page \$20
1/2 page \$30 Full page \$50

Electronic submissions should be emailed to:

editor@cambridgeglass.org

Use Word. Mailed submissions and all payments should go to PO Box 416, Cambridge, OH 43725. Deadline is 10th of preceding month. Ads must be paid in advance. Show listings are FREE; send info to PO Box or e-mail address 60 days before event.



Connecting Buyers & Sellers!
Tell us what you are looking for and we help find it.
CAMBRIDGE GLASS.US
P. Snyder 740-601-6018
E-Mail and Find Your Glass!
psnyder@cambridgeglass.us
www.cambridgeglass.us

E-Blast
When you are searching for Cambridge glass, email your request and it is emailed to all members and dealers.
P. Snyder, 1500 Edgewood Dr., Circleville, Ohio 43113

PATTON HOUSE ANTIQUES

Specializing in Glass
Heisey • Cambridge • Fostoria • Duncan

Factory Antique Mall
Verona, VA off I-81. Exit 227

The Daniels, Box 547 Louisa, VA 23093
(540) 967-1181

Cheshire Cat Antiques

Specializing in elegant depression to mid-century era glass and vintage kitchen glass.

Francee Boches > 305-884-0335
fboches@cheshirecatantiques.com



Cherished Collectibles

Shopping 24 hours in our online store
Glassware, Figurines, Collectors' Plates

www.cherishedcollectibles.com
Elegant and Depression Era Glass

Classified Ads - Reach over 1,000 avid collectors of Cambridge Glass

Edward Sawicki

Memories Antiques

"Glass is our Passion"

Candlesticks and stemware our Specialty."

PO Box 153 646-522-1506
Dunnellen, NJ 08812 ejsawicki@optonline.net

CRYSTAL LADY

1817 Vinton St. Omaha, NE 68108
Bill, Joann and Marcie Hagerty
402-699-0422

Specializing in Elegant Glass & Collectibles
www.crystalladyantiques.com

Glen & Carolyn Robinson White Rose Antiques

Specializing in Depression Era Glassware

2454 McFarland Road
York, SC 29745

803-684-5685
gandcrobinson@aol.com
whiteroseglassware.com

CRYSTALLINE COLORS

Cambridge • Fostoria • Elegant Glass
Penny Court Mall, Cambridge - 2 booths
Medina Antique Mall
Medina, OH (I-74, exit 218)

Lynne R. Franks 216-661-7382

GLASS FROM THE PAST

Maureen Gillis



www.glassfromthepast1.com
email: maureen@glassfromthepast1.com

Cambridge Nudes - Dave Small

HTTP://CambridgeNudes.com

3011 Cambridge Statuesque

Buy, Sell, Trade

davesmall@mac.com

281-376-3686



TWEAK COLLECTIBLES

Specializing in Elegant Glass

BUY & SELL

WANTED: CAMBRIDGE TURKEYS

417-742-3653

btummons@aol.com

VIRTUALATTIC AT THE GLASS CHALET

SPECIALIZING IN ELEGANT DEPRESSION ERA GLASS

Sandra L. Bridwell-Walker PO Box 726
Phone: 740-492-5022 Newcomerstown, OH
43832
Sandy's Cell: www.virtualattic.com
817-559-0328 virtualattic@sbcglobal.net
theglasschalet@sbcglobal.net

Max Miller

Elegant American Glassware

www.maxmillerantiques.com

The Market Place 713-410-4780
10910 Katy Freeway. mmxglass@aol.com
Houston TX 77043

Ohio Valley Antique Mall

7285 Dixie Highway (Route 4)
Fairfield, OH 45014

Cincinnati's Largest Multi-Dealer Antique Mall
Hours: DAILY 9:00 a.m. - 9:00 p.m.

513-874-7855

www.ohiovalleyantiquemall.com
cfaxon@ohiovalleyantiques.com

Milbra's Crystal Buy & Sell

Replacement and Matching
Milbra Long

(817) 645-6066
PO Box 784

Cleburne TX 76033

Specializing in
Cambridge
Fostoria, Heisey
and others

ISAACS ANTIQUES

(740) 826-4015

See our booths in Penny Court Mall in
Cambridge and at Glass House Antique Mall
Route 40, one mile east of
I-70 Norwich, OH • Exit #164)

BAKER FAMILY MUSEUM

805 CUMBERLAND ST.
CALDWELL, OHIO 43724
740-732-6410

bakermuseumnellbaker@msn.com

Wed & Thurs 9-4; Fri - Sat 9-5

MARGARET LANE ANTIQUES

2 E. Main St. New Concord, OH 43762
Lynn Welker (740) 826-7414

Cambridge Glass Matching Service
Hours: Mon-Fri 10-12 AM, 1-5 PM
or by appointment

Our House Antiques



Linda and David Adams
Las Vegas, NV
1-800-357-7169



www.OurHouseAntiques.com

email: David@OurHouseAntiques.com

National Cambridge Collectors, Inc.
PO Box 416
Cambridge OH 43725
email: editor@cambridgeglass.org
website: www.cambridgeglass.org



The museum closed for the season on December 21. After the last visitors left, volunteers and staff that helped throughout the holiday season gathered at the museum to celebrate a very successful year. Row 1 (l-r) Lindy Thaxton, Gary Wiseman, Cindy Arent, Carl Beynon and Julie Davey. Row 2: Mike Neilson, Lisa Neilson, Sharon Miller, Sandi Rohrbough, Sally Slattery, Susan Everett, Shirley Beynon and Karen Treier. Row 3: Max Treier, Joe Miller, Sharon Bachna, Jeff Ross, Betty Sivard, Betty Davis, Reggie Gerko, David Ray, Cleo McHenry and Tom Davey. Absent from the photo were: Lynn Welker, Larry Everett, Sarah Carpenter, Marybelle Teters, Margene Osterberg, Nancy Guegold and Rich Bennett.

The National Museum of Cambridge Glass

**Located at 136 S. 9th Street
in downtown Cambridge,
Ohio**

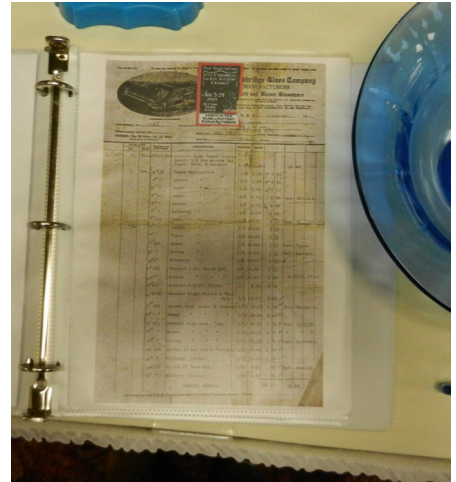
**Closed for the
season
see you in April**



Additional Photos



Hedi and Brent Berry presenting "Diane"



David Rankin had an order form dated 1924

Informal scenes from the November 2014 meeting

