



Cambridge Crystal Ball

Published by the National Cambridge Collectors, Inc. as a resource which informs, invites and inspires people to encourage the continued preservation of the glass produced by the Cambridge Glass Company of Cambridge, Ohio for future generations.

Issue No. 453

November/December 2011

A Hunting We Will Go!

This is the theme for our 2012 NCC Convention & Show. So mark your calendars for June 20 - 24, 2012.

Not only will we be featuring our beautiful glass with a hunting motif, but, we'll be stalking our prey at the Glass Dash and Glass Show.

As you know the silent auction was different this year. According to the survey and the proceeds gained, we want to try this venue again. We are asking the members to donate a gift basket. We (convention co-chairs) are suggesting a creation with items from your home State. Nancy Finley is planning a basket to represent Missouri and Julie Buffenbarger will do one from Ohio. More than one from any State will be fine. Another suggestion is to do one with the theme in mind. This could include a piece or two of Cambridge Glass. A couple of Tally-Ho stems for instance?

Anyone who would like to donate a basket for the silent auction, please contact Nancy Finley by email: jefinley@charter.net or by phone: home 660-826-5032 or cell 660-281-4627. All proceeds from the auction are for the benefit of the NCC Museum.

National Cambridge Collectors, Inc.

PO Box 416 Cambridge, OH 43725-0416

Board of Directors

Cindy Arent	Ken Filippini	Nancy Finley
Les Hansen	Rick Jones	Helen Klemko
Freeman Moore	Mark Nye	David Ray
Mike Strebler	Lynn Welker	Frank Wollenhaupt

Officers

President	David Ray
Vice-President	Ken Filippini
Secretary	Freeman Moore
Treasurer	Mike Strebler
Sergeant-at-Arms	Mark Nye

Director of Strategic Planning	Rick Jones
Director of Human Resources	David Ray
Chair, Standards Committee	Sharon Miller
	Larry Everett - Committee Member
	Susan Everett - Committee Member
	David Ray - Committee Member
	Mike Strebler - Committee Member

Member Services

Vice President	Frank Wollenhaupt
Member Relations	(vacant) Director of Member Relations
	Tarzan Deel - Membership Data-base Administrator
Crystal Ball Convention	Helen Klemko - Executive Editor
	Julie Buffenbarger & Nancy Finley - Convention Directors
Digital Media	Alex Citron - Manager of Facebook Operations
Member Meetings	(vacant)
Study Groups	Jeannie Moore - Study Group Coordinator

Development

Vice President	Larry Everett
Campaigns	Ken & Jane Filippini - Annual Fund Directors
	Larry Everett - Director of the Heritage Society
Events	Jack & Elaine Thompson - Auction Managers
	jack1746@roadrunner.com
	Lynn Welker - Auction Manager
	Joy McFadden - Show Manager
	Mary Beth Hackett - Show Manager
	Larry & Susan Everett - Glass Dash Managers
Projects	Carl Beynon - Jeweler & Scotties Project Manager
Publicity	Frank Wollenhaupt

Education

Vice President	Les Hansen
Publications	Mark Nye - Director of Publications
Research	Mark Nye - Archivist
Programming	Greg Vass - Director of Programming
NCC History	Mark Nye - Archivist

Museum

Vice President	Cindy Arent
Public Operations	Sandy Rohrbough - Docent
	Betty Sivard - Docent
	Sally Slattery - Docent
Facilities & Grounds	Carl Beynon - Director of Facilities
Collections	Lynn Welker - Director of Collections
Merchandise Sales	Lynn Welker - Gift Shop Manager
	Cindy Arent - Gift Shop Manager
Community Relations	Cindy Arent

Administration

Vice President	Mike Strebler
Accounting & Finance	Lisa Neilson - Office Manager
Risk Management	(vacant)
Payroll	(vacant)
Information Technology	David Adams - Webmaster
Legal	(vacant)

ADDRESS CHANGES

Please send address changes to:
 Membership - NCC
 PO Box 416
 Cambridge, OH 43725
 or by e-mail to:
tarzandeel@verizon.net

WEBSITES

- **NCC WEBSITE**
www.CambridgeGlass.org
- **MIAMI VALLEY STUDY GROUP WEBSITE**
www.mvsg.org

CONTACTS

NCC Museum (phone)..... (740) 432-4245

David Ray, President.....
 e-mail: westervillesh@hotmail.com
 Freeman Moore, Secretary.....
 e-mail: freemanmoore@verizon.net
 Helen Klemko, Crystal Ball Editor.....
 e-mail: ncccrystalball@charter.net

National Museum of Cambridge Glass
Closed for the season - see you in April



Located at 136 S. 9th Street in downtown Cambridge, OH
 Wed-Sat 9 a.m. - 4 p.m. - Sunday Noon - 4 p.m.
 General Admission \$4 - Seniors & AAA members \$3
 NCC Members and children under 12 FREE



PRESIDENT'S MESSAGE

An Enjoyable Adventure

Throughout my years of collecting Cambridge Glass, I have always noted the warm receptions received by NCC members when visiting the homes of fellow glass collectors. The hospitality starts the moment you enter the home and continues until the moment you leave. I have been very fortunate to visit the homes of many NCC members and have enjoyed seeing many outstanding Cambridge glass collections. Each visit involves a personalized tour of the collection which leads to many interesting conversations. These conversations can, and often do, last for hours.

My most recent Cambridge glass adventure representing NCC was to Denver, CO, to attend the Pikes Peak Depression Glass Show. NCC members Tom McLean and Don Spencer graciously opened their new home to me for the weekend. A beautiful collection of Gloria highlights their dining room, while other rare pieces of Cambridge glass are displayed throughout their home. Tom, Don, and I engaged in several glass-related conversations that weekend. We spent hours talking about the many rare pieces of Cambridge glass Tom and Don have found and sold over their 35 years of collecting Cambridge glass. One specific conversation focused on an opportunity they had about 15 years ago to purchase an 8.5" crystal swan with lid. Being a swan collector myself, this conversation had my full attention. I nearly collapsed when Tom reported they did not purchase the covered swan because they felt the price was too high. These types of conversations occur frequently when NCC members get together and they truly add an exciting dimension to collecting Cambridge glass. I must thank Tom and Don for their hospitality during my visit and hope to return to Denver in the future. Tom and Don are planning to attend the 2012 Annual Convention.

For glass collectors living in the Denver area, there are two excellent opportunities each year to shop a high-quality glass show. The glass shows are held at Castle Rock, which is located about 30 minutes south of Denver, and occur in April and September. NCC Glass Show dealers, Jim and Leora Leasure, David and Linda Adams,

Jim and Linda Kilburn, and Sandy Bridwell-Walker were set up at this year's show. Several nice pieces of Cambridge Glass were available for purchase. Some of the most exciting pieces were a 13.5" Light Emerald Swan, 3011 crystal roemer with the Vichy etching, Amber and Gold Krystal turkeys, two La Rosa Caprice parfaits, a pair of Lyre candlesticks with bobeches, and a lovely Willow Blue bud vase with Gloria etching. Many other beautiful offerings of Cambridge glass were available for purchase as well as glassware from all major elegant and Depression glass companies.

As the Holiday Season approaches, Cindy Arent and her Museum staff are preparing for their two busiest months of the year. Additional volunteers are always needed, so please consider volunteering to be a greeter, tour guide, or a friendly face that helps make our Museum visitors feel welcome. Several bus tours are scheduled and your help will be appreciated.

Being a member of NCC has been a significant part of my life for the past 20 years. I am thankful for the numerous close friendships I have developed and the many wonderful people I have had the opportunity to meet. As the Thanksgiving and Christmas season approaches, please take a moment to reflect on the blessings you and your family have received this year. I truly hope your affiliation with NCC and your passion for collecting and learning about Cambridge glass has brought you much joy and excitement.

As the end of the year approaches, I want to take this opportunity to say, thank you, to all of the NCC members who have volunteered their time and effort to help make 2012 a very successful year for NCC.

I wish each of you a Happy Thanksgiving and a Merry Christmas.

David

David Ray
westervillesh@hotmail.com

INDEXX Printing an Asset to Greenville, S.C.

Approximately five years ago, I became the Editor of the Cambridge Crystal Ball - a somewhat daunting task for a person who had no background in putting together a publication, let alone tackling the software challenge. Early in that learning curve, I was fortunate to become familiar with Indexx and, in particular, John Wickersham and Julie Moskow. Their professionalism and knowledge have been invaluable to a novice such as myself. Both John and Julie have always made themselves available for questions and advice. At my request, Indexx put together the following article so our members can appreciate how fortunate we are to be involved with such a progressive company.

Helen Klemko, Editor, *Cambridge Crystal Ball*

If you have ever passed through the Upstate of South Carolina, then perhaps you've stopped in Greenville, S.C. Known for its steadily increasing economic development, its beautiful downtown revitalization and its perfect location nestled close to mountains and lakes, Greenville is also home to INDEXX, Inc., the largest privately owned commercial printer in South Carolina, which is responsible for the National Cambridge Collectors' print material, including *The Crystal Ball*.

Most importantly, INDEXX, Inc. is proud to announce that for the third consecutive year, it is listed in *Printing Impressions' Top 400 Commercial Printers in North America*. 2010 proved the most successful year yet, as INDEXX climbed 28 spots up the list from the previous year. Rankings are based on company revenue from the previous year. *Printing Impressions* is the commercial print trade's most widely read publication.

"I am especially pleased to have risen even further in the rankings despite such challenging economic times," says INDEXX president Jordan Finn. "We are honored to be listed among so many well-known commercial printers across North America. As always, our company strives to deliver a quality product and excellent customer service, and we continually update our technology and equipment to stay on top of the ever-changing market demands. For instance, we became tri-certified in the practice of sustainable forest initiatives in June 2010 in order to better meet our customers needs and expectations."

Indeed, INDEXX is one of only eight printers in South Carolina to achieve FSC, SFI and PEFC tri-level certification, a program that helps ease habitat destruction by encouraging printers to use paper stocks from sustainable, traceable and approved resources. A product printed on one of these approved papers bears the logo that corresponds to

the appropriate sustainability program (FSC, SFI or PEFC). Such a logo signifies that the printer is actively engaged in conservation efforts.

"Our motivation to become tri-certified was a combination of our company wanting to be good stewards of the environment, and the ability to partner with our customers to achieve their 'green' initiatives," says Forrest Reaves, Quality Assurance Coordinator and FSC, SFI, PEFC Chain of Custody Manager at INDEXX.

Over the years, INDEXX has graciously acquired several outstanding awards in the commercial printing industry, including being awarded numerous Printing Industry of the Carolinas, Inc. (PICA) graphic communications awards and was selected among *Graphic Arts Magazine's* Top 10 Printers in the U.S. in 2007.

INDEXX, Inc. opened for business 18 years ago in 1993 after acquiring a struggling small copy shop in Greenville. INDEXX president Jordan Finn quickly immersed himself in the printing business and grew the former copy shop by investing in high-speed black and white copiers and small offset presses. INDEXX moved into its current 52,000 sq. ft. facility in 2006, allowing the addition of an internal mail house, 40 inch presses and a HP 7000 Indigo Digital Press.

"Our company has come a long way since 1993," says Finn. "We have expanded our services, our teams and relocated at every strategic growth stage. We have remained a privately owned business, giving us the flexibility to proactively pursue new trends and developments in the print industry much faster than larger print conglomerates."

INDEXX is a 15 million dollar a year company. It offers print planning consultation, graphic design services, digital printing, commercial printing and mailing and fulfillment services to local Upstate businesses, as well as nationwide customers through its e-commerce division. Please visit our 'In the News' section of INDEXX's website, www.indexx.com to learn more about *Printing Impressions' Top 400 Commercial Printers in North America* and our tri-certification with FSC, SFI and PEFC.

ONLY QUESTIONS - NO ANSWERS

By Frank Wollenhaupt (fewvic303@sbcglobal.net)

Where has the summer gone? As I write this, I don't know if I should put shorts on or my winter coat. Any day the temp goes from 45 to 85.....I guess SUMMER is really gone and now we must get ready for the winter season. In Ohio, that season runs 6 or 7 months. Don't know that I am ready for that but what choice do I have? I know, some of you are thinking if you don't like it, you can move. Do you realize what a challenge that would be? Anyone that has collected glass for as many years as we have knows that it would take months just to pack everything up for the move. Once it is packed, who do you trust to move it for you? No, I don't think moving is the answer. I just need to grin and bare it.

Has everyone had a good summer and been able to find some new treasures for your collection? Every year it gets harder and harder. The shops we used to find things in are gone and nothing has come to replace them. The big shows are getting smaller if they exist at all. If you shop on Ebay, the selection there has really fallen off. It isn't even worth the time and effort to look anymore. It's hard to believe that we have lived through the golden days of glass collecting. With that said, we need to do all we can to make our club stronger and find ways to keep people active and interested.

With the new Governance Structure in place, we now have 5 operational vice-presidents and I have been chosen to head one of those divisions. My division is Member Services. It covers Member Relations, Crystal Ball, Convention, Digital Media, Member Meetings and Study Groups. The reason I am mentioning this is because I need your help. I am trying to find someone that would like to fill the position of Director of Member Relations.

I also need your help in defining what you as members would like to see in "Member Relations". I have some ideas and I am sure that each and every one of you has an idea or two. I think it's important some time is put into trying to understand what our membership needs and would like to see us as a club do. So if you know of something you would like to see us do or some way we can take care of membership better, please email me with those suggestions. I would appreciate it and I know the membership would also.

Last month I said that I was going to chose two members, publish their names and see if I could help them write a story for the Crystal Ball. In looking over the "Passenger List" from the 2011 convention, I see that we have a club member from Battlecreek, Michigan who collects Everglade, Flower Frogs and Stems, and a member from Sheridan, Montana

who collects Colored Wildflower and Firenze.

I am sure that we would all like to know how long these members have been collecting, how they got started, what is their prized Cambridge piece and all about their collection.

Hope to hear from these members or anyone else that would like to send in a story to YOUR Crystal Ball.

I need questions. Please take a few minutes and drop me a line.

See you at the November meeting.

National Museum of Cambridge Glass 2011 Special Holiday Hours

***136 S. Ninth Street, Downtown Cambridge, Ohio
740-432-4245 www.cambridgeglass.org***

The National Museum of Cambridge Glass will be open special holiday hours. The museum will be decorated for the season and volunteers and staff will be dressed in Victorian attire. If you are looking for a special gift made in Cambridge, Ohio USA, visit the museum gift shop where you will find a variety of jewelry and Christmas decorations made from Cambridge Glass, as well as beautiful handmade pieces of Cambridge Glass.



The Annual Museum Holiday Open House will be Saturday, November 26th from noon to 4:00 p.m. No admission will be charged during the open house.

Museum Holiday days/hours of operation:

***Saturdays - November 5, 12, 19 and 26; noon to 4:00 p.m.
Saturdays - December 3, 10, and 17; noon to 4:00 p.m.***



by Larry Everett

This report is provided to keep members up with what's happening on the world's largest Internet Auction site. It is not meant as an educational tool, nor as a pricing guide, and we cannot guarantee the accuracy of listings herein.

Greetings from eBay land! Please forward interesting news to me at: heartlamps@sbcglobal.net.

Rose Point:

Only one Rose point item this month, but it's a beauty! On Sep 28th a rare 7" – 1620 vase ended quite reasonably at \$255. Cambridge also made these vases in the 9" and 11" sizes.

Statuesque:

Pictures are nice, but sometimes you would like to see the glass in person. Some colors are so close that they may appear to be something that we would like them to be. On Oct 1st a set of four statuesque hocks (3011/5 – 6 oz.) sold for \$760 (set). They were advertised as pistachio; perhaps the buyer can send a note to let us know if the color description was accurate. Similarly, a seller simply listed a 3011/9 – 3 oz. cocktail as a "Crown Tuscan/Yellow Cocktail". Unless my eyes are deceiving me, it looked like this was a nice buy for a Topaz/Crown Tuscan stem at \$257.

Other Etchings:

On Oct 2nd a nice pair of 3400/79 - 6 oz. Tall Oils, w/Ground Stoppers in Lt Emerald brought \$68.88. Also in Lt Emerald was a No. 276 - 10" Fluted Bud Vase, E Rosalie. This nice find sold for \$49.99. A nice Cleo 1075 - Cream Soup and Saucer in Willow Blue sold for \$20.50. A rare 1228 - 9" Pillow Vase, D/1001 Gold Encrusted Portia sold for \$325 on Sep 29th. An unusual lamp sold on Sep 29th for only \$90. It was made from a Crystal 1621 - 10" Footed Urn Vase which was E Minerva. Two nice Heatherbloom 3400/29 - 7" Tall Comports sold on Sep 21st. The Gloria example brought \$360 and the Apple Blossom example managed \$202.70. If you like gold on Crystal you would have loved the GE Wildflower 3900/671 - Ice Bucket with gold handle and tongs. This beautiful example brought \$160.27 on Sep 20th. Prefer Gold on Ebony? Then perhaps the 278 – 11" GE Wildflower Ebony bud vase that sold for \$158.05 is now on your shelf. I really would like to know how many railcar loads of the 3400/4 – 12" bowl Cambridge made. But, make this common bowl in Crown Tuscan and slap on a GE Candlelight etching and you have a \$332.89 rarity.

Miscellaneous:

A Near Cut Gothic 2970/165 - Tall Crushed Fruit Jar and Cover (Crystal) sold for \$49.99 on Oct 2nd. A nice Sea Shell number 47 cornucopia in Royal Blue generated a lot of interest before ending at \$229.50. If you like Cut Candlelight (and who doesn't) Sep 27th was a big day for you. Several 8" plates sold for around \$27 each and several 4 1/2" bowls ended at around \$50. A Lt Emerald Buddha sitting on a fluted flower frog base sold on Sep 25th for \$395. A Blue Bell 2 bun Geisha figure sold on Sep 25th for \$220, earlier the mate sold for \$405. A pair of unusual metal lamps with Eagle Bookends sitting on the bases managed \$67.99. And the last item this month was a 2355 - 8" Cambridge Arms peg vase in Crown Tuscan. This rarity went to a happy home for \$188.50.

Happy hunting!

2355 - 8" peg vase in Crown Tuscan



Bluebell two bun Geisha



Lt. Emerald Buddha on flower frog base



1620 - 7" vase Rosepoint



Cleo 1075 Cream Soup and Saucer in Willow Blue



3400/4 - 12" bowl in Crown Tuscan GE Candlelight



3900/671 Ice Bucket GE Wildflower



278 - 11" Ebony bud vase GE Wildflower



Sea Shell #47 cornucopia in Royal Blue



2970/165 Near Cut Gothic Fruit Jar and Cover



Eagle Bookends made into a pair lamps

National Cambridge Collectors, Inc.

Minutes of the August 20, 2011 Quarterly Meeting

President, David Ray, called the August Quarterly Meeting to order at the Storage Building at 1:25PM on Saturday, August 20, 2011. Eleven members were in attendance.

Because the minutes from June Quarterly Meeting have not been published in the Crystal Ball, a vote for their approval was delayed until the November Quarterly Meeting.

Reports:

Acquisitions: Lynn Welker identified three significant pieces that have been added to the museum collection: a pair of Table Architecture candlesticks, a Table Architecture bowl, and a pair of Lady Leg bookends. Donations to the gift shop have been arriving on a regular basis and sales have been good so far this year.

Auction: Jack Thompson reported auction consignment lists are now being accepted. Approximately 10 lists have already been received. Jacked noted he has nearly finished a history of the NCC Auction, and it will be posted to the website when completed.

Facilities: Carl Beynon reported the roof is scheduled to be repaired during late summer or early fall. While the roof is being repaired, one of the heating/AC units will be replaced. Also, Carl is obtaining quotes to have the asphalt replaced in the parking lot. A few weeks ago, the storm drain in the parking lot was repaired.

Museum: Cindy Arent reported the museum has over 40 bus tours scheduled for the Holiday Season.

Standards Committee: Sharon Miller gave a brief update on the new governance structure. Within the new governance structure, there are five Operational Vice-Presidents: **Membership** – Frank Wollenhaupt; **Development:** Larry Everett; **Education:** Les Hansen; **Museum:** Cindy Arent; **Administration:** Mike Strebler. The Committee proposes adding two new positions: **Human Resources**, which will be led by David Ray and **Strategic Planning** which will be led by Rick Jones. Since many of our Committees are comprised of one person, the Committee is proposed all Committee Chairs

be retitled as “Director”. For example: the title *Chair of the Museum Committee* will now be called *Museum Director*. Finally, the Standards Committee made a few small grammatical changes to the Mission Statement. Members will be voting on these changes at the 2012 Annual Meeting.

New Business:

Greg Vass volunteered to become the Program Director. Greg has been communicating with Theo’s Restaurant and organizing activities associated with the November Quarterly Meeting. Look for more information about November Quarterly in the September and October issues of the Crystal Ball.

Dave Rankin has volunteered to assist in the creation of new post cards for the museum to sell.

The West Virginia Museum of Glass is offering NCC the opportunity to purchase a glass case for \$2,600 at their museum to display Cambridge Glass and promote NCC. Frank Wollenhaupt has volunteered to visit their museum to obtain more details about the proposal and will report to the BOD in the future.

Lynn Welker moved to adjourn the August Quarterly Meeting with a second from Joe Miller. The motion passed. The August Quarterly Meeting was adjourned at 2:00 PM.



NCC welcomes the
following new Friends

R. Michael Eltringham &

Ron McCmas

Tracy Laurinat

Joyce & Bill Miller

Ohio

Washington

Florida

A Look Back In Time Part I by Mark Nye

The following appeared in the August 24, 1933 issue of "The Daily Jeffersonian," the Cambridge Ohio daily newspaper.

GLASS CO. WILL SET SECOND HUGE BATTERY OF FURNACES IN OPERATION FRIDAY A.M.

"The continued upswing of business in Cambridge is reflected in the announcement Thursday morning by Wilbur L. Orme, manager of The Cambridge Glass Co, that the plant will set the second set of its battery of three huge glass furnaces in operation Friday morning for a lengthy run. New orders which the company received recently are responsible.

Since last May the company has been operating only one of its furnaces. The second was lighted two weeks ago when it appeared that additional business was forthcoming. Since then orders have been coming in in considerable volume and now the furnace is ready to tour out its glass products.

Starting of the second furnace means that the factory will be operated to two-thirds of capacity. Manager Orme is hopeful that the upswing of business will continue and that soon all three of the furnaces will be in operation and the plant running at capacity. Work will be given to approximately 50 old employees who were laid off last May when the furnace was shut down. Likewise, operation of the furnace will mean steadier employment for men and women in all parts of the large factory. The output of one furnace was insufficient to keep them at work continuously and as a result they received wages for only part-time employment. With the second furnace producing ware, the mold, decorating and shipping departments will have increased work and the payroll of the plant will be materially increased. This should benefit business in Cambridge generally."

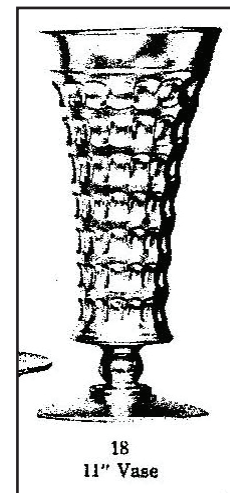
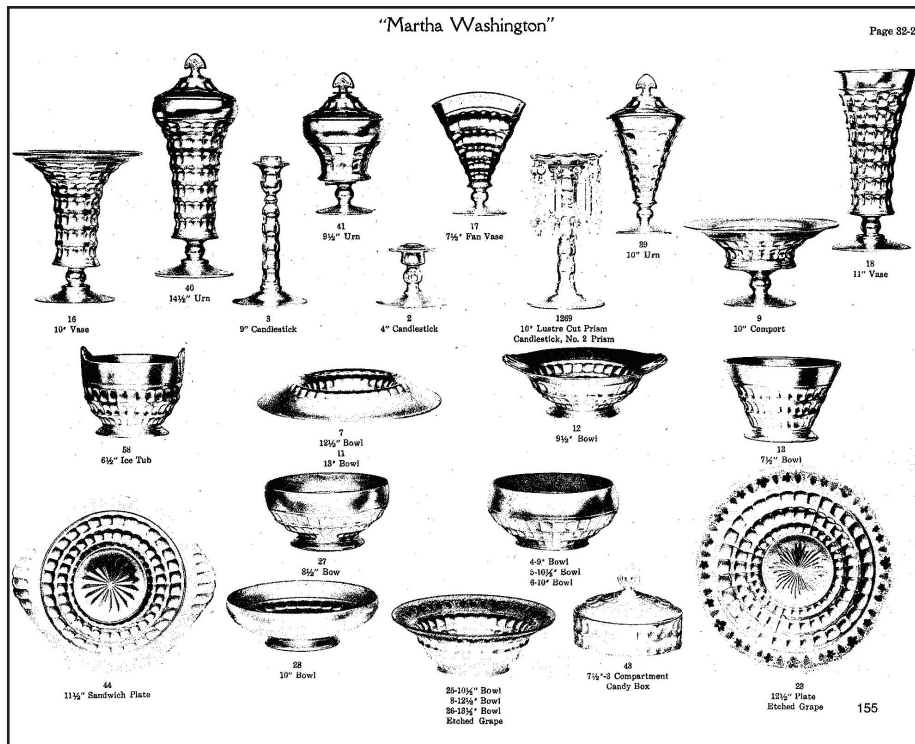
The preceding appeared in the August 24, 1933 issue of "The Daily Jeffersonian," the Cambridge Ohio daily newspaper.

The next item is taken from a 1932 advertisement that appeared in at least one trade journal.

"NEWEST CREATIONS FOR THE FALL SEASON"

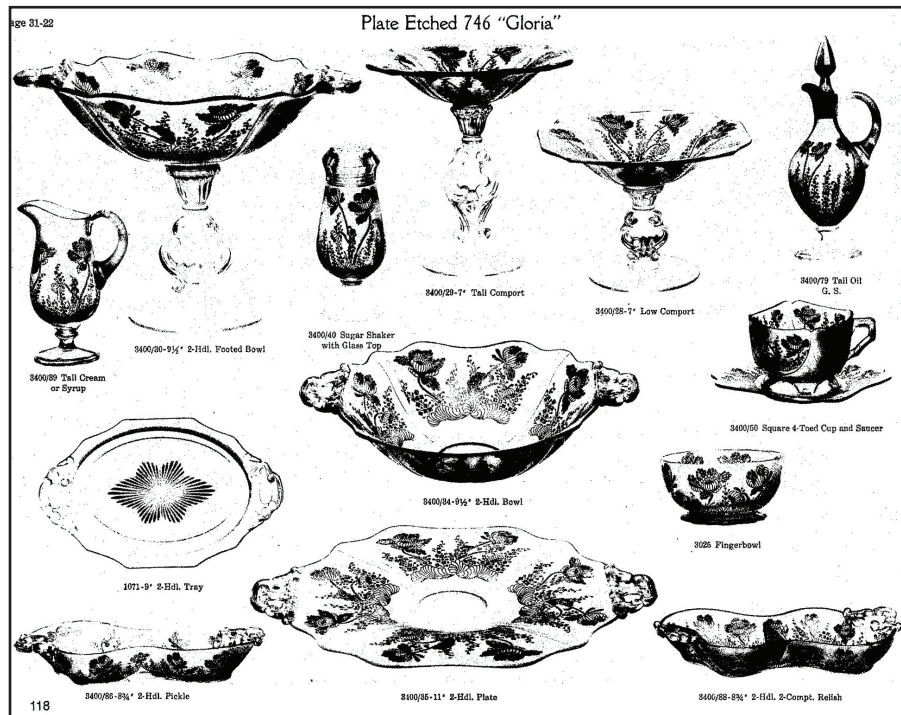
A full line of these beautiful early American glass novelties embellished with our NON-TARNISH sterling silver deposit, in crystal or green. Most of the pieces can be retailed for \$5.00 each. Write for samples or photographs. Be sure and visit our show room when in New York. Fifteen items including, jug, chop plate, bowl, vase, candy box, covered urn, candle sticks, cracker & cheese. EDMONDSON WARRIN INC. Decorators of China and Glass New York City Crockery and Glass Journal August 1932

The illustration that completed the advertisement pictured pieces of the Cambridge Martha Washington Line. Included was the No. 18 11 inch vase shown here as it appeared in a supplement to the 1930 Cambridge catalog.



A Look Back In Time Part I - continued

“Did you meet Gloria in the Cambridge display? If not you missed a real treat, charm, shape, dress and everything.” Crockery and Glass Journal February 1931 Gloria is seen here as it appeared on a Cambridge catalog page.



President and Red Cross Head Commend Cambridge Glass Co.'s Generous Contribution.

The Guernsey County (Ohio) Red Cross drought relief campaign for a \$4000 quota was given tremendous impetus January 30, when employees and officials of the Cambridge Glass Co. contributed approximately \$1800. The whole hearted response of the company personnel was considered one of the most commendable charitable efforts ever made by a single industrial organization in this community and President Hoover, in a special letter to the local Red Cross Chapter, praised the employees and the officials for their hearty co-operation of relieve distress.

Through his secretary, Lawrence Rickey, Present Hoover sent the following message of commendation to the Glass Co. and its employees: The President appreciates the hearty co-operation of the employees of the Cambridge Glass Co. in the raising of funds for the Red Cross relief work. He is bringing it to the attention of Chairman Payne.”

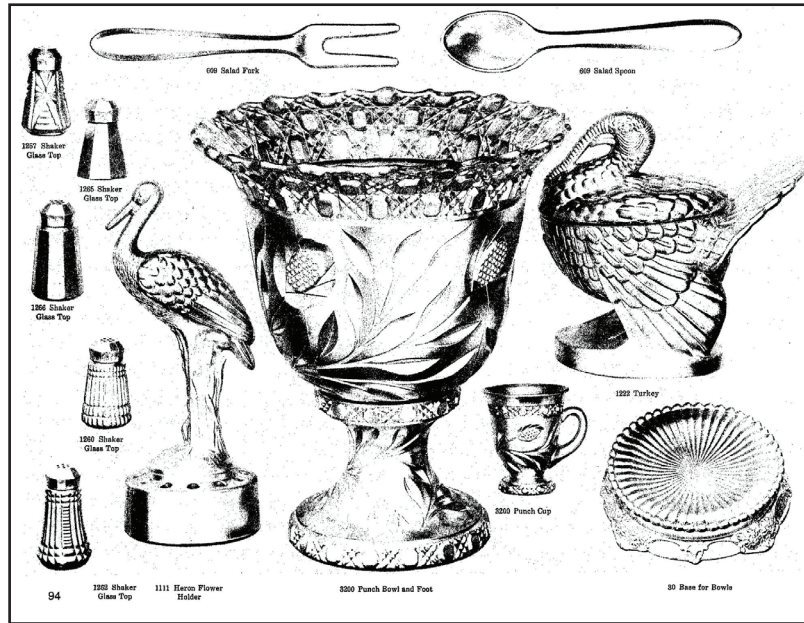
The Cambridge Glass Co received the following telegram from John Barton Payne, national chairman of the Red Cross, expressing appreciation for the contribution:

“Information that your employees have volunteered to donate an average day’s pay to Red Cross drought relief practically 100 per cent participating and the company subscribing an equal amount, has just reached us. The American Red Cross regards this as an outstanding illustration of sympathy for their fellowmen and as evidence of unselfish patriotic devotion to the welfare of country and to American institutions and expresses its warmest appreciation and thanks.”

For every dollar given by the employees, the company donated a dollar. In this manner the \$1800 contribution was raised. It was a free will offering by those who have work to their fellow men affect by the drought and out of work.” Crockery and Glass Journal February, 1931

“Cambridge Glass Co. are showing in their Chicago showroom, 1547 Merchandise Mart, a number of attractive items. “The Heron Flower Holder is one of the most unique and attractive items of the season. It is offered only in crystal. Cambridge are also showing a new candelabra in Carmen, gold crystal or crystal. This candelabra has bobèche of crystal and crystal tear drops. The Cambridge silver decorations on ebony glass in both Appleblossom and Gloria are meeting with warm approval. Cambridge have also revived the punch bowl in its near-cut design. A leaf design candlestick in green and crystal is also being shown.” Crockery and Glass Journal March 1931

A Look Back In Time Part I - continued



A New Water Jug Which Sells Itself

“Some things sell themselves and the new ball-shaped water jug here pictured is a case in point. [Ed. Note: The original article had a picture of 3400 ball jug etched Apple Blossom.] This was on display less than a day at the New York showroom of the Cambridge Glass Co., 184 Fifth Avenue, when orders began to come in from those who had seen it or heard about it.

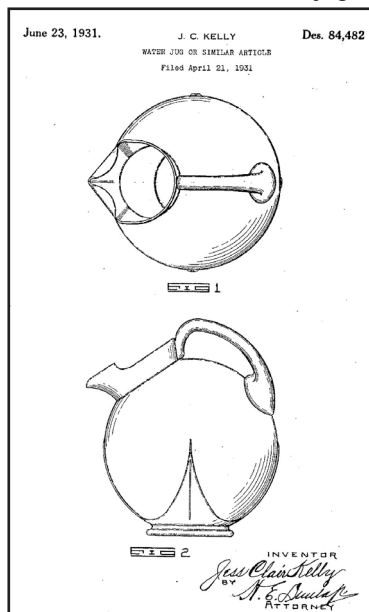
The originality and attractiveness of the shape is immediately fascinating and one at once wonders why the idea had been thought of before. It is so good looking and so practical. Really there is no reason why we should go on forever using jugs that are the same as they were since jugs were first made. Of course there isn't, but it remained for the Cambridge Glass Co. to think so, design something entirely different and put it into production.

The new jug is not at all difficult to enthuse over. Ball-shaped, its ice lip and handle are so placed that pouring is rendered simpler than with the old style jug and the user does not have to go through the gymnastics usually involved in picking up the ordinary jug.

When not employed for its original purpose the new ball jug makes a most artistic and very unusual flower vase, lending itself particularly well as a container for apple blossoms and sprays of flowers. Its adaptability for sweet peas too is shown at the local Cambridge showroom.

The jug is being shown in the delightful Cambridge etchings, Apple-Blossom, Loran and Gloria, in plain crystal, peach, emerald and gold Krystal. Rock crystal cuttings are also in preparation.

O. C. Graham, New York manager, is naturally very proud as well as enthusiastic about the new shape on which the company has applied for a patent for their protection against possible infringers. The number of the new jug is 3400-38.” Crockery and Glass Journal May 1931
 A copy of the patent illustration of what has become to be known as the “ball jug” accompanies this article.



A Look Back In Time Part I - continued

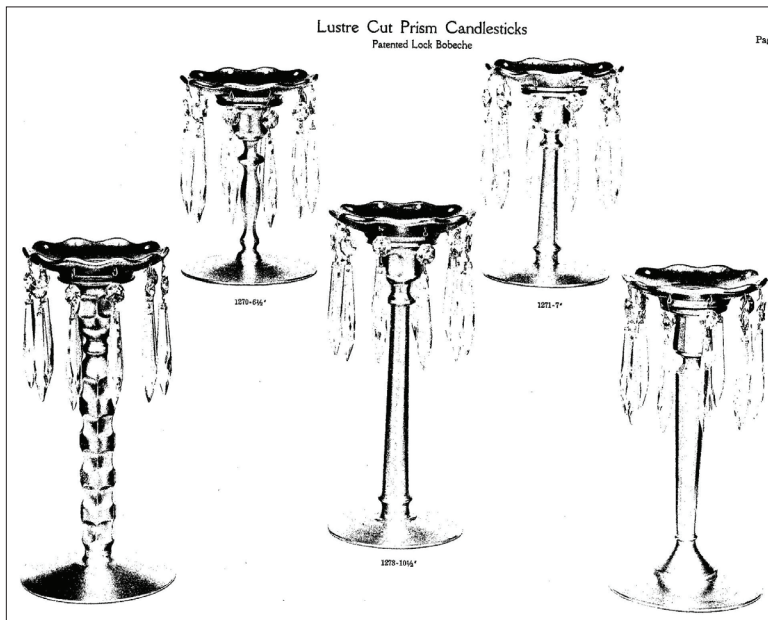
Cambridge Centerpiece with New Candelabrum

"In combination with bowls to form console sets or used in pairs alone these distinctive and practical Luster Cut Prism Candelabrum have, in their short time on the market, proven themselves excellent sellers.

A new locking device which holds the bobèche firmly in place yet which permits easy removal proves irresistible to the customer searching for the unusual. A patent application is pending for this device which insures its exclusive manufacture by Cambridge.

The new candelabrum are made in five styles and range in height from 6½ to 11 inches. They come in Crystal, Gold Krystal, Ebony, Amber, Emerald and Peach, all with Crystal bobèche and prisms. They may be had plain or color in crystal and etchings. The bowls, of course, are obtainable in matching colors and etchings." Cambridge Glass Advertisement – Crockery and Glass Journal June 1931

Luster Cut Prism Candlesticks were shown on a supplemental page to the 1930 Cambridge catalog. A reprint of this catalog page accompanies this article.



Author/editor's note: Spelling and grammar in the quotes from Crockery and Glass Journal is original. In some instances it is not what we use today.

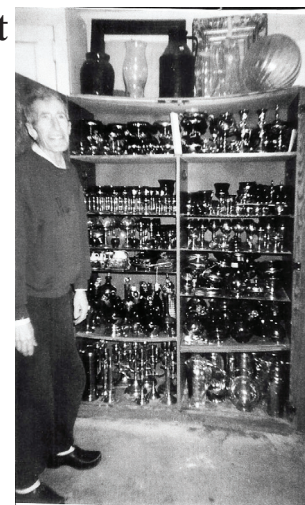


FOR SALE: **CAMBRIDGE GLASS COLLECTION** (Estate of Richard Eyan)

Located in New Milford, CT.
Available October-November by appointment
Approximately 3,000 Items to
be sold by Lot

Many pieces including:
Caprice, Marjorie, Rose Point,
Farber, Chantilly, Tally-Ho, Carmen,
Milkglass, Crystal, Royal Blue.
Too many items to list

Contact: John McLain
Home: 860-355-9019
Cell: 860-946-9766



TWO CABINETS OF WHICH THERE ARE 7 - LOADED

LYNN WELKER

2 East Main Street
New Concord, OH 43762

Phone: (740)826-7414
Evenings and weekends: (740)705-1099

Prices each, UPS extra

CAPRICE , MOONLIGHT BLUE

#2-7 oz. tall sherbet (7)	25.
#42-9" oval tray	35.
#183-80 oz. ball jug	225.
#179-32 oz. juice jug	245.
#310-12 oz. tumblers (6)	60.
#131-8" low ftd. Hldd. Plate	30.
#97 or 98 condiment tray	40.
#111 divided salad dress.set	75.
Much more, call.	

WILDFLOWER:

#3400/115=13 oz. tumblers (6)	35.
#3400/141 low Doulton jug	175.
#797-8" flip vase	100.
3900 or 1399-12" salad bowl	100.
#3121-10 oz. goblets (12)	22.
#3400/52 butter & cover	100.
#555-7" plates, gold trim (8)	10.
#3400/176-7" plates (7)	10.
#3500/15 ind. Sugar/creamer	35.
#3650 bell, rare	75.
Much more, call.	

OTHER ETCHINGS:

Candlelight #647 dbl.candles.	75.
Marjorie 8" plates (12)	8.
Chantilly #3625 cordials (5)	40.
Valencia #3500/28-10" bowl	50.
Valencia #3500/97-14" relish	50.

ROSEPOINT:

#272-10" vase	75.
#3400/202 oblong bonbon	65.
#3400/28-7" keyhole comport	75.
#151 mustard & cover	125.
#3400/52 butter & cover	100.
#7801 5 oz. ftd. Tumbler	85.
#3400/92-2 oz. barrel shot	75.
#1468 egg ind. Salt/pepper	85.
#1398-13" gardenia bowl	100.
#3400/34-10" vegetable bowl	75.
#3900/35-13" cakeplate	60.
#3500/71-7" center hldd. Relish	75.
#1321-28 oz. sherry decanter	250.
#3500/127 4" ashtray	50.
Much more, call.	

CANDLE, ARMS PARTS:

Peg bluejay	100.
#2355-8" vases	25.
#19-1 bobeches & prisms	35.
#19-1-4 lock bobeches (2)	35.
#1634-8" peg vase	35.
#2355-6" vases	22.
Much more, call.	

CARMEN:

#3400/68 cream/sugar	40.
#3500/15 ind. Cream/sugar	50.
#3500-3 oz. tall cocktails (8)	30.

ROYAL BLUE:

#1238-8" ivy ball	60.
#1402 Tally-Ho cups/saucers (6)	22.

AMBER:

#3500/79 favor basket	50.
#1040-3" swan	75.

LaROSA, PEACHBLO:

#17 Caprice cups/saucers (8)	25.
Crackle old fashioned, camb.label	40.
#3400/38-12 oz, tumblers (6)	12.
#3400 grill plates, Appleblossom (2)	65.
#1041-4" swan	55.

CROWN TUSCAN:

#3500/36-6" twist stem compote	75.
#1301-10" vase, gold Chintz,sign.	125.
#1043-8" swam, mint gold décor	125.
#1234-12" keyhole vase	50.

EMERALD, FOREST GREEN:

#187 Caprice 8 pc.decanter set	400.
#3500/57-8" candy & cover	50.
#3500/15 ind. Suagr/cream	30.
#1043-8" swan	125.
9" artichoke plate	40.

MOONLIGHT BLUE:

#647-2 lite candlesticks	75.
--------------------------	-----

AZURITE:

10" across, 7" tall compote, gold tr	65.
#124-3" basket, 5" tall	60.

MILKGLASS:

#1042-6" swan	150.
#117 Caprice cruet	75.

HEATHERBLOOM:

#9 Mt. Vernon cov. Urn	150.
#3400/38-80 oz. ball jug	200

BLUEBELL:

#319-9 oz. Georgian tumbler	35.
#680 dresser compact, covered	60.

IVORY:

Ram's Head bowl, some gold trim	175.
---------------------------------	------

JADE:

Atomizer, mint gold splash, fittings	225.
7" comport	28.

MANDARIN GOLD:

#1042-6" swan	75.
#1040-3" swan	30.

#3011 STATUESQUE NUDES:

Gold 3 oz. cocktail	85.
Amethyst 3 oz. cocktail	85.
Crystal Optic 3 oz. cocktail	75.
Crown Tuscan/Gold 3 oz. cocktail	100.
Tahoe Blue 3 oz. cocktail	150.
Emerald (dark) 1 oz. brandy	90.
Crystal Optic champagne	120.
Forest Green flared comport	175.
Carmen cupped comport	200.
Heatherbloom 4 oz. claret	275.
Crown Tuscan ivyball	250.
Crown Tuscan candlesticks, pair	300.
More, call.	

CUTTINGS:

Achilles #3400/28-7" comport	75.
Harvest Calla Lily candlesticks, pair	75.
#1312 ftd. Cigarette box, fancy floral	100.
Lynbrook mayo set	30.

NCC Books for Sale

Published by NCC • Members receive a 10% discount

TITLE		REGULAR PRICE	MEMBER PRICE
1910 NearCut Catalog Reprint	108 pages, paperback, no price guide	\$14.95	\$13.45
1927-29 Catalog Reprint	66 pages, paperback, no price guide, includes identification guide	\$9.95	\$8.95
1930-34 Catalog Reprint	250 pages, paperback with 2000 price guide	\$14.95	\$13.45
1930-34 Catalog Index	Index for above	\$2.00	\$1.80
1949-53 Catalog Reprint	300 pages, paperback, no price guide	\$19.95	\$17.95
Cambridge Colors II (New)	Hardcover with price guide	\$19.99	\$17.99
Caprice	200 pages, paperback, no price guide	\$19.95	\$17.95
Decorates	136 pages, paperback, no price guide	\$14.95	\$13.45
Etchings (2nd Edition)	102 pages, paperback, no price guide	\$17.95	\$16.15
Etchings, Non-Catalogued	70 pages, paperback, no price guide	\$12.95	\$11.65
Etchings: Blossomtime	26 pages, paperback, no price guide	\$7.95	\$7.15
Etchings: Candlelight	30 pages, paperback, no price guide	\$7.95	\$7.15
Etchings: Chantilly	44 pages, paperback, no price guide	\$7.95	\$7.15
Etchings: Diane	53 pages, paperback, no price guide	\$7.95	\$7.15
Etchings: Elaine	64 pages, paperback, no price guide	\$9.95	\$8.95
Etchings: Portia	57 pages, paperback, no price guide	\$7.95	\$7.15
Etchings: Wildflower	42 pages, paperback, no price guide	\$7.95	\$7.15
Rock Crystal Engravings	119 pages, paperback, no price guide	\$17.95	\$16.15
Rock Crystal Engravings (Listings)	Companion to above; lists all pieces in all patterns	\$9.95	\$8.95
Rock Crystal 1940 Illustrated Catalog & Price List		\$14.95	\$13.45
Rose Point - Second Edition	146 pages, paperback, no price guide	\$19.95	\$17.95
Pharmaceutical Catalog No.8 1915-1920 Reprint	68 pages, paperback, no price guide	\$9.95	\$8.95

How to Order by Mail or from the NCC Website

Send orders to:

NCC • PO Box 416 • Cambridge, OH 43725

OHIO RESIDENTS PLEASE ADD 7% SALES TAX

Please include your name, complete mailing address and your phone number or e-mail address.

Payments by check or Money Order only, payable to NCC.

Books may also be purchased on the NCC website, www.cambridgeglass.org. Major Credit Cards are only accepted for web purchases.

SHIPPING/HANDLING:

All items (including books) except Scottys:

Total order up to \$6	\$3.50
\$6.01 to \$25.00	\$6.50
\$25.01 to \$50.00	\$7.50
\$50.01 to \$75.00	\$8.50
Over \$75.00	\$11.50



APPLE BLOSSOM is setting THE VOGUE ..

VISUALIZE this lovely table setting in your store. Consider the interest it will arouse among your customers and the sales it will bring. Apple Blossom, adaptable to dozens of beautiful table combinations, gives you in one consistent theme, quality stemware, dinnerware novelties and flat pieces in a selection of delicate and striking colorings. There is the peach, emerald, amber, crystal or willow-blue and our recent innovation, the new Gold Krystal. Call at our nearest showroom, where you will find complete samples awaiting you. Regardless of its expert designing and fine quality, Apple Blossom is not expensive—you will be agreeably surprised. Advertising mats supplied to assist your sales.



Permanent Displays
Philadelphia, Pa.
521 Filbert Street
Milwaukee, Wis.
204 Wisconsin Ave.
Boston, Mass.
59 Bulfinch Street
Detroit, Mich.
115 Thomson Bldg.
Denver, Colorado
1601 Emerson Street
Kansas City, Mo.
5th Floor, Ridge Bldg.
Los Angeles, Calif.
946 South Flower St.
London, E.C.2., England
48 Fore Street

The
Cambridge Glass Company
CAMBRIDGE OHIO
NEW YORK 184 Fifth Ave.
CHICAGO 1547 Merchandise Mart

Tell our advertisers you saw it in THE CROCKERY AND GLASS JOURNAL

FOR SALE: CAMBRIDGE ROSE POINT

I would like to sell an assortment of glassware in the Rose Point pattern including the following:

4 champagne glasses

5 iced teas.

6 cups and saucers

10 bread plates

1 small round bowl....the size of a sugar bowl

Salt and pepper shakers (no lids)

Plus extra pieces.

Excellent Condition

I live in the Hanover Park, IL area. This collection would be ideal for someone looking to complete or enlarge their collection. Please pass this information on to anyone who maybe interested in buying my Rose Point.

Asking price: \$1,000.00 or best offer.

For further information, please contact me as follows:

Denise M. Smith

Call: 630.432.2530

Email: smithdmxine@juno.com

If you know about any upcoming glass shows or other glass events, please pass the word on to us at least six to eight weeks before the show dates. These listings are free of charge.

DEALER DIRECTORY

Joanne & Janine Bender
Specializing in Depression Era Glassware
We Buy & Sell

PO Box 1007
Pebble Beach, CA 93953

831-647-9957

jjdbender@aol.com

831-647-9949

www.benderglass.com

J & L Treasures
Specializing in Depression Glass
Heisey, Cambridge, Fostoria, Morgantown,
Tiffin, etc.

Linda Kilburn
PO Box 1257
Burlington, CT 06013

860-673-4088 (Answering machine - leave message)

Ohio Valley Antique Mall

7285 Dixie Highway (Route 4)
Fairfield, OH 45014

Cincinnati's Largest Multi-Dealer Antique Mall
Hours: DAILY 9:00 a.m. - 9:00 p.m.

513-874-7855

www.ohiovalleyantiquemall.com

cfaxon@ohiovalleyantiques.com

NCC Events

2012 NCC Auction

Saturday, March 3, 2012

2012 Convention

June 20-24, 2012

Glass Shows

November 5 - 6, 2011

St. Louis Depression Glass & Pottery Show & Sale

St. Charles, Missouri

redapplelegal@aol.com

636-257-0567

November 5 - 6, 2011

30th Upper Midwest Depression Era Glass & Pottery Show

Bloomington, Minnesota

www.michigandepressionglass.com

firesidant@aol.com

651-770-1567

November 5 - 6, 2011

Tiffin Glass Collectors Club Show & Sale

Tiffin, Ohio

www.tiffinglass.org

November 5 - 6, 2011

Michigan Depression Glass Society 39th Depression Era

Glass Show and Display

Dearborn, Michigan

www.michigandepressionglass.com

November 12 - 13, 2010

Hudson Valley Depression Glass Club Show & Sale

Red Hook, New York

845-473-3898

November 12 - 13, 2011

Antique Glass & Pottery Show & Sale

Tulsa, Oklahoma

Haveglass@aol.com

918-747-4164

November 18 - 19, 2011

North Jersey Depression Glass Club Show & Sale

Allendale, New Jersey

www.northjerseydeeegeclub.com

973-267-7511

February 25, 2012

Green River Glass Show & Sale

Kent, Washington

kayswede@msn.com

253-852-5250

DEALER DIRECTORY

Dealer Directory - \$24 for 12-months, size limited by box (see below). Includes listing on NCC website.

Advertising Rates:

1/8 page \$15 1/4 page \$20
1/2 page \$30 Full page \$50
(plus \$5 per photograph)

Electronic submissions should be emailed to:

ncccrystalball@charter.net.

Use Word. Mailed submissions and all payments should go to PO Box 416, Cambridge, OH 43725. Deadline is 10th of preceding month. Ads must be paid in advance. Show listings are FREE; send info to PO Box or e-mail address 60 days before event.

ALADDIN LAMP BOOKS

Aladdin Electric Lamps
SB, 229 pp., \$24.95 to C.Collectors PP.
J.W. "Bill" Courter
brtknight@aol.com
550 Pioneer Ln. Phone 270-488-2116
Calvert City, KY 42029

Max Miller

Elegant Glassware • Books • Fiesta
...and more
THE MARKET PLACE
(713) 467-0450 - BUS 10910 OLD KATY RD.
(713) 461-1708 - RES HOUSTON TX 77043
MMXGLASS@aol.com

Cheshire Cat Antiques

Specializing in elegant depression to mid-century era glass and vintage kitchen glass.

Francee Boches > 305-884-0335
fboches@cheshirecatantiques.com

Pull up a Mouse!
Shop 24 hrs a day at
cheshirecatantiques.com



BAKER FAMILY MUSEUM

805 CUMBERLAND ST.
CALDWELL, OHIO 43724
740-732-6410

bakermuseumnellbaker@msn.com

Wed & Thurs 9-4; Fri - Sat 9-5

Classified Ads - Reach over 1,000 avid collectors of Cambridge Glass

CRYSTAL LADY

1817 Vinton St. Omaha, NE 68108
Bill, Joann and Marcie Hagerty
Shop 402-341-0643 Home 402-391-6730

Specializing in Elegant Glass & Collectibles
www.crystalladyantiques.com

Glen & Carolyn Robinson
White Rose Antiques
Specializing in Depression Era Glassware

2454 McFarland Road
York, SC 29745

803-684-5685
gandcrobinson@aol.com
whiteroseglassware.com

CRYSTALLINE COLORS

Cambridge • Fostoria • Elegant Glass
Penny Court Mall, Cambridge - 2 booths
Riverfront Antique Mall
New Philadelphia, OH (I-77, exit 81)
Booth #'s 626 and 616

Lynne R. Franks 216-661-7382

GLASS FROM THE PAST

Maureen Gillis



www.glassfromthepast1.com
email: glassfromthepast1@comcast.net

Cherished Collectibles

Shopping 24 hours in our online store
Glassware, Figurines, Collectors' Plates

www.cherishedcollectibles.com
Elegant and Depression Era Glass

TWEAK COLLECTIBLES

Specializing in Elegant Glass
BUY & SELL
WANTED: CAMBRIDGE TURKEYS
417-742-3653
btummons@aol.com

VIRTUALATTIC AT THE GLASS CHALET

SPECIALIZING IN ELEGANT DEPRESSION ERA GLASS
Sandra L. Bridwell-Walker PO Box 3448
William P. Walker Cleburne TX 76033-3448
Phone: 817-202-0940 www.virtualattic.com
Sandy's Cell: 817-559-0328 virtualattic@sbcglobal.net
theglasschalet@sbcglobal.net
Bill's Cell: 817-357-7084

Daugherty's Antiques Jerry and Shirley Antiques & Collectibles-Mostly Glass

www.daughertys-antiques.com
email: sdaugh2515@daughertys-antiques.com

Shows & Mail Orders 2515 Cheshire North
402-423-7426 (evenings) Lincoln, NE 68512

THE GLASS HOUSE ANTIQUE MALL Furniture, Pottery, Glass Antiques and Collectibles I-70 Exit 146, East on SR 40

8825 E. Pike
Norwich OH 43767 TEL 740-872-3799

Milbra's Crystal Buy & Sell

Replacement and Matching
Milbra Long (817) 645-6066
Emily Seate (817) 294-9837
PO Box 784
Cleburne TX 76033

Specializing in
Cambridge
Fostoria, Heisey
and others

E-mail: longseat@sbcglobal.net
www.fostoriacrystal.com

ISAACS ANTIQUES

(740) 826-4015

See our booths in Penny Court Mall in
Cambridge and at White Pillars Antique Mall
(Route 40, one mile west of
I-70 Norwich, OH • Exit #164)

The American Bell Association International, Inc.

7210 Bellbrook Drive
San Antonio, TX 78227-1002
www.americanbell.org



MARGARET LANE ANTIQUES

2 E. Main St. New Concord, OH 43762
Lynn Welker (740) 826-7414

Cambridge Glass Matching Service
Hours: Mon-Fri 10-12 AM, 1-5 PM
or by appointment

Our House Antiques



Linda and David Adams
Las Vegas, NV
1-800-357-7169



www.OurHouseAntiques.com
email: David@OurHouseAntiques.com

National Cambridge Collectors, Inc.
PO Box 416
Cambridge OH 43725

website: www.cambridgeglass.org
e-mail: ncccrytball@charter.net

Friends of Cambridge – Annual Fund

NCC exists through member giving using an Annual Fund system to raise operating funds and to ensure the preservation of Cambridge glass for future enthusiasts. The Annual Fund uses a common member "renewal" date and NCC sends out Annual Fund materials to everyone once a year during March/April. There are no monthly reminders or monthly renewal dates. The Annual Fund is NCC's primary means of support and all Annual Fund gift recognition levels are per household and include membership for all adults within the household. Additionally, each household will receive a subscription to the Crystal Ball newsletter, unlimited admissions to the museum, and rights to vote in elections for the Board of Directors. Multiple households at the same address are welcomed. NCC is a 501C(3) organization and Annual Fund gifts are allowed as a tax deduction under Section 170 of the Internal Revenue Code.

Levels of Membership

Patron	\$35
Benefactor - Century	\$100
Benefactor - Mardi Gras	\$200
Benefactor - Japonica	\$500
President's Circle	\$1,000

President's Circle includes Convention registration for two members in the household and one copy of any new NCC publications.

National Museum of Cambridge Glass

**Closed for the season
see you in April**

**Located at 136 S. 9th Street in
downtown Cambridge, Ohio**

Wed-Sat 9 a.m. - 4 p.m.

Sunday Noon - 4 p.m.

General Admission \$4

Seniors & AAA members \$3

NCC Members and children under 12

FREE

