



Cambridge Crystal Ball

Published by the National Cambridge Collectors, Inc. as a resource which informs, invites and inspires the continued preservation of the glass produced by the Cambridge Glass Company of Cambridge, Ohio for future generations.

Issue No. 444

January 2011

Preparations for the 2011 NCC Benefit Auction

By Jack and Elaine Thompson

It's that time of year again for the Auction Committee. Even though the auction is Saturday, March 5, 2011, there is much to do before then.

During August and September, consignors submitted their lists of items to be considered for the auction. It was nice having the additional month, and we may replicate that next year. We received lists totaling 740 items from 45 different consignors. It was a very difficult task to select the 400 lots for the auction.

After the consignors were notified of the items selected for the auction, they mailed or brought their items to Cambridge by the November quarterly meeting. In previous years, the committee would work in the museum.

However, this year that was not possible because of the many tour groups visiting the museum. Mike Arent graciously offered the use of COPAC. This arrangement worked out very well. The area we used had plenty of space and was well lit.

First we unpacked everything and checked it off the lists to make sure everything was received. What a sight to see - all of that beautiful glass !! Then all the pieces were identified and inspected for condition. The next step was to photograph each item. Dave Rankin set up a portable photographic studio and photographed each

item, individually and in many groupings. Many of these photographs will be in the February *Crystal Ball* as well as on the NCC website. The final steps were to repack everything and transport it to the museum for safe storage until the auction.

The committee would like to thank Mike Arent, Rich Bennett and Dave Rankin for all their time and efforts during this part of the auction preparation.

Take a look at the auction catalogue in this issue of the *Crystal Ball*, and start making out your wish list. Then keep an eye out for the February issue and on the web site for all the great pictures and the preview article to help you decide which items you want to take home. Of if you can't make it to Cambridge for all the fun, consider an absentee bid.



Dave Rankin taking photos of the auction glass

The committee would like to sincerely thank all the consignors for their submissions and for their on-time delivery of the glass. It is very much appreciated, and without them, this auction would not be possible.

We look forward to seeing everyone at the auction on Saturday, March 5, 2011.

National Cambridge Collectors, Inc.

PO Box 416 Cambridge, OH 43725-0416

Friends of Cambridge – Annual Fund

NCC exists through member giving using an Annual Fund system to raise operating funds and to ensure the preservation of Cambridge glass for future enthusiasts. The Annual Fund uses a common member "renewal" date and NCC sends out Annual Fund materials to everyone once a year during March/April. There are no monthly reminders or monthly renewal dates. The Annual Fund is NCC's primary means of support and all Annual Fund gift recognition levels are per household and include membership for all adults within the household. Additionally, each household will receive a subscription to the Crystal Ball newsletter, unlimited admissions to the museum, and rights to vote in elections for the Board of Directors. Multiple households at the same address are welcomed. NCC is a 501C(3) organization and Annual Fund gifts are allowed as a tax deduction under Section 170 of the Internal Revenue Code.

Levels of Membership

Patron	\$35
Benefactor - Century	\$100
Benefactor - Mardi Gras	\$200
Benefactor - Japonica	\$500
President's Circle	\$1,000

President's Circle includes Convention registration for two members in the household and one copy of any new NCC publications.

National Museum of Cambridge Glass Open April thru October only



Located at 136 S. 9th Street in downtown Cambridge, OH
Closed for the season - see you in April

Contacts

NCC Museum [open April thru October only]
(phone)..... (740) 432-4245
(fax)..... (740) 439-9223

David Ray, President.....e-mail: Westervilleesh@hotmail.com
Freeman Moore, Secretary.....e-mail: freemanmoore@verizon.net
Helen Klemko, Crystal Ball Editor.e-mail: ncccrystalball@charter.net

Address Changes

Please send address changes to:
Membership - NCC
PO Box 416
Cambridge, OH 43725
or by e-mail to:
tarzandeel@verizon.net

Websites

- **NCC WEBSITE**
www.CambridgeGlass.org
- **MIAMI VALLEY STUDY GROUP WEBSITE**
www.mvsg.org

Officers & Committee Chairs

President	David Ray
Vice-President	Larry Everett
Secretary	Freeman Moore
Treasurer	Mike Strebler
Sergeant-at-Arms	Mark Nye
Acquisitions	Lynn Welker
Archivist	Mark A. Nye
Auction	Jack and Elaine Thompson jack1746@roadrunner.com
Budget & Finance	Lynn Welker
By-Laws	Mike Strebler
Convention	Alex Citron
Crystal Ball	Nancy Finley & Julie Buffenbarger
Endowment	Helen Klemko, Executive Editor
Facilities	Larry Everett
Glass Dash	Carl Beynon
Glass Show & Sale	Larry & Susan Everett
Membership	Mary Beth Hackett & Joy McFadden
Museum	Julie Buffenbarger, Member Services
Nominating	Tarzan Deel, Database
Program	Cindy Arent
Projects	Rick Jones
Publications	David Ray
Publicity	Carl Beynon
Study Group Advisory	Mark A. Nye
Technology	Lorraine Weinman Ncc_lw@yahoo.com Jeannie & Freeman Moore David Adams, Webmaster

Board of Directors

Cindy Arent	Larry Everett	Ken Filippini
Rick Jones	Helen Klemko	Sharon Miller
Freeman Moore	Mark Nye	David Ray
Mike Strebler	Lynn Welker	Frank Wollenhaupt



PRESIDENT'S MESSAGE

Thanks For A Great 2010

NCC is characterized by its enthusiastic and passionate membership, which resulted in 2010 being an outstanding year. The Auction Committee, led by Jack and Elaine Thompson and Lynn Welker, orchestrated the first official event of the year in March. The Annual Benefit Auction offered over 400 lots of beautiful Cambridge glass that grossed nearly \$35,000. Thank you to Jack, Elaine, and Lynn, as well as all the NCC members who consigned and purchased glassware, for making the benefit auction such a huge success.

The Annual Fund Campaign was organized by Mike Strebler, Helen Klemko, Lisa Neilson, and Ken and Jane Filippini. The 2010 Annual Fund Campaign is projected to top \$50,000, which represents the largest sum of funds received since the Annual Fund Campaign's inception. In the midst of difficult economic times, NCC is blessed by the generosity of its membership. The Board of Directors is excited to announce that \$25,000 will be added to the Endowment Fund, which brings the Endowment Fund's balance to \$125,000. Thanks Mike, Helen, Lisa, Ken, Jane, and all the NCC members who generously contributed to the 2010 Annual Fund Campaign. We look forward to receiving each member's support in 2011.

Who could forget the Annual Convention titled "Under the Big Top" organized by an energetic group of volunteers led by Sharon Miller? Convention week officially lasts five days, but I always find myself wanting "just one more day". This year's Annual Convention was packed with exciting opportunities for socializing with friends, learning about Cambridge glass, and shopping the premier-quality Glass Show. The Glass Show always has wonderful pieces of elegant glassware for sale, especially Cambridge glass. Thank you Sharon (and her team of volunteers) and all the NCC members who made the 2010 Annual Convention one to remember.

A very informative program led by Lynn Welker on the Re-Opened Period of the Cambridge Glass Company highlighted the November Quarterly Meeting. Not only was the glassware displayed for the program very impressive, but, as always, Lynn educated the audience about all the different types of glass blanks, etchings, and cuttings produced by the Cambridge Glass Company from 1955-1958. Thank you to Lynn and to all the NCC members who provided glassware for the program.

2010 was a banner year for the National Museum of Cambridge Glass. The Museum Committee, under the leadership of Cindy Arent, hosted a record number of visitors again this year. Docents Betty Sivard and Sandy Rohrbough, as well as many museum volunteers worked countless hours to educate visitors about the history of Cambridge glass. Although the Museum is

officially closed during the months of January through March, Cindy will be recruiting volunteers to help clean the glassware and the showcases in preparation for the 2011 season. I am always excited to see the new displays in the Dining Room, Show Room, and Rotating Display Room. Thank you to Cindy, Carl, Betty, Sandy, Lynn, and all the NCC member volunteers who have unselfishly dedicated themselves to making the National Museum of Cambridge Glass one of the top visitor destinations in Guernsey County and all of Ohio!

I want to recognize the hard work and dedication of the Crystal Ball editor, Helen Klemko. She devotes hundreds of hours each year to producing a high-quality newsletter. However, Helen continuously reminds the membership that the quality of the Crystal Ball is only as good as the articles it contains. Please make a commitment in 2011 to write an article or take some photographs for the Crystal Ball, so it remains a vibrant and an informative publication. Thank you, Helen, and all the NCC members who have contributed material for the Crystal Ball.

Finally, I want to personally thank those NCC members who have stepped up to distribute Glass Show Dealer Packets throughout the country. The Glass Show Committee is dedicated to recruiting high-quality dealers for the 2011 Glass Show. NCC members Fleur de Lys Healy and Lynn Welker will be distributing packets in Florida. Jeannie and Freeman Moore have volunteered to distribute packets in Texas. Ken and Jane Filippini will be canvassing the glass shows along the East Coast. And, Greg Vass will be searching for new dealers in Washington D.C. and Virginia. Good luck to these members, who are recruiting Glass Show dealers. If you live in an area of the country not mentioned above and you desire some of the Glass Show Dealer Packets, please contact Joy McFadden and Mary Beth Hackett at (614) 973-9145 or mbhjrm@aol.com

David

David Ray
westervillesh@hotmail.com

HIGHLIGHTS OF THE NOVEMBER PROGRAM: THE RE-OPEN PERIOD

By Sharon Miller

51 NCC, Inc. members from Iowa, Texas, South Carolina, Indiana, Michigan, Connecticut, The District of Columbia, Missouri and Ohio enjoyed a wonderful social hour and buffet meal at the Cambridge Country Club on November 6, 2010. Lynn Welker did his usual outstanding job of presenting the program for the evening. Lynn had a large and interesting selection of Cambridge Glass to describe and discuss provided by several of our members. Attendees were further enlightened about the Cambridge Re-open period of 1955 – 1958 through descriptions of the various lines that were used during this period. Some of the



Lynn Welker presenting the Program: The Re-Open Period

old and familiar names such as Caprice, Martha Washington and Mount Vernon remained in the catalogs. The cuttings of Adonis and Achilles survived as well as the major etchings of Rose point and Wildflower. Lynn pointed out that 82 pieces of each of these etchings were produced and that Caprice was only produced in crystal during the re-open period. A full line of Swans, including the punch bowl, were produced in Style III, again only in crystal

Some new colors, treatments and lines made an appearance during this time period. On display were the new colors of violet, smoke, Madeira, moonlight, pink, pistachio, dark amber, and gold. Pieces of pink, pistachio, gold, blue and smoke crackle glass were examples of the bar ware line that Cambridge offered. These colors were also used to produce the nude stem line. The smoke crackle nude created some excitement as did some of the other unusual items displayed. Crackle glass was short lived and only appeared only during 1956 – 57. Also featured pieces were the hambone ash tray in the bowtie shape and yet a more unusual piece of a smoke hambone ashtray with a triple vase epergne. The Mardi Gras and Sonata lines were introduced late in the re-open period and were only moderately successful. Lynn noted that these were the only items that were done in colored brochures for advertisement. Some other interesting facts about the re-open period were noted. The majority of Violet was produced in the molded Everglades line with a few pieces found in the Jenny Lind and Mt. Vernon patterns. The pieces of White Rain and Blue Cloud were described as examples of seeded glass and were known as the Casual line.

Many new cuttings were introduced in the re-open period and it was interesting to see the variety displayed. It was apparent that Cambridge was struggling to compete with the very

modern appearance of their offerings. The names of the new cuttings include Anniversary, Tomorrow, Starlight, Radiant Rose, Starburst, Old Master, and Elite to name a few. Many of the cuttings that were on display are very seldom seen. Several new etchings were introduced during this time and were on view such as Paisley, Mimosa, Stars, Leaf and Silver Leaf. The silver overlay process had been abandoned and instead, a platinum trim was applied to many of the goblets. Platinum was also applied to the leaf etching on pieces of the Sonata line to create the Silver Leaf pattern.

The price lists are a fascinating part of company history in that we can hardly image paying only \$3.00 to \$5.00 a dozen for cut stems with \$10.50 per dozen for the Old Master cutting viewed as very pricey. Lynn quoted prices for the nude stems in March of 1956 as \$27.00 and then showing an increase to \$42.00 per dozen at the time of the plant closing. With price increases of 10% during a given production year, it was apparent The Cambridge Glass Company was struggling to stay solvent during the re-open years. In 1958, Carmen was put into production in the Sonata or Oval line. Sunset barware was introduced along with Dark Amber, the Jenny Lind line and the Moderne line. The controlled bubble overlay process was tried unsuccessfully and examples of this technique have only been found in the homes of workers. Examples of paperweights were displayed in moonlight blue and mandarin gold.

A big thank you to our president, David Ray, for organizing the November Quarterly meeting, to Lynn Welker for organizing the extensive display of the re-open period, and also to those members who brought glass for the display. The Glass Swap in the afternoon had 5 participants and many interested shoppers. Visiting members also had an opportunity to see the museum decorated in her Christmas finery. It was a great weekend!



L-R: Larry Everett, Jim Finley & David Ray



Elaine Thompson and Stephanie & John Fecik

Show and Tell items that were displayed by members were as follows: Ebon vase with stars; 3500 comport with Adonis cutting; Round Peachblo Ice Bucket/waterlily etching; Ivory cylinder vase with sponge treatment; Crown Tuscan punch cup; Marjorie vase signed NearCut; Jade Candlesticks; Pink Georgian Tumbler, signed; #4022 12" vase – 1910 catalog listing; Azurite Chelsea Comport.

Exceptional Museum Holiday Season!

By Cindy Arent

Each year we are amazed at the increase in visitors during the museum extended season and this year was no exception. So many new friends were made during November and December. Museum staff and volunteers warmly greeted motorcoach groups from all over Ohio, New York, Pennsylvania, South Carolina, Maryland, Georgia, Michigan and Indiana and glowing comments were received from group leaders.



During one of the early November groups, two special guests happened to come to the door and were quickly included with the tour group. They were Mindy Orme and Pam Orme Wasylik; daughters of William C. Orme, granddaughters of Wilber L. Orme and great granddaughters of Arthur J. Bennett. We enjoyed talking with Mindy and Pam and look forward to seeing them at the museum again in the near future.

Saturday, November 27th was the traditional Museum Holiday Open House from noon to 4:00 pm. This event has also grown in popularity drawing even more visitors this year. When the dust settled at the end of the day and the drawer was totaled, we had just over \$800 in sales, a record day!

The National Cambridge Collectors, Inc was well represented by volunteers at the Chocolate Walk and Fezziwig's Ball. These are very popular local holiday events that are even attended by motorcoach groups visiting Cambridge.

November 28th was the Annual Cambridge Holiday Parade and the museum float was entered. The title of the entry this year was "Christmas in Merry Old England" and we won Best Non-Profit Entry! The word on the street was that we also tossed the most candy to children along the parade route.

We are looking forward to 2011 with great anticipation. The three rotating display rooms will feature: Cambridge ice pails by Ralph and Linda Warne, Cambridge keyhole design by Alex Citron and Shelley Cole and the dining room will be set with Cambridge Seashell in Crown Tuscan to coincide with the 2011 convention theme.

Happy New Year and we can't wait to see you at the museum during the 2011 season!



Museum volunteers, having just finished guiding a motorcoach group through the museum, gathered around the Dickens Victorian Village Glass Blower scene. The next stop was the Chocolate Walk through downtown Cambridge. L-R; Carl Beynon, Sharon Miller, Larry Everett, Cindy Arent, Shirley Beynon, Sharon Bachna and Rich Bennett were anxious to begin collecting their goodies and greeting people along the way. 350 tickets were sold for the Chocolate Walk in 24 hours.



At the conclusion of the Holiday Open House, museum staff and volunteers gathered around the Christmas tree decorated with Cambridge Glass; L to R – Cindy Arent, Gary Wiseman, Sharon Miller, Sandi Rohrbough, Joe Miller, David Ray, Rich Bennett, Carl Beynon, Betty Sivard and Lindy Thaxton.



The museum float is shown passing the judging area in front of the Courthouse with Randall and Patrick Ross on the float along with Father Christmas. Museum community volunteer, Roger Nott, is passing out candy. NCC won the "Best Non-Profit Entry" in the Cambridge Holiday Parade. There were 100 entries this year.

National Cambridge Collectors, Inc.

November 2010 Quarterly Meeting

President David Ray called the November 2010 Quarterly Meeting of the National Cambridge Collectors, Inc. to order on Saturday November 6, 2010 at 6:45 pm. The meeting was held at the Cambridge Country Club, Cambridge, OH, with approximately 52 members in attendance.

Larry Everett moved (second Linda Roberts) to waive the reading the June 2010 Quarterly Minutes. After hearing no requests for corrections, the minutes of the June 2010 Quarterly Meeting, as printed in the September 2010 issue of the Crystal Ball, were approved.

Treasurer's Report – Mike Strebler was not able to attend in person, but David Ray provided a summary of the financial report. Copies were provided on each table. The Annual Fund has done well this year, and exceeded the budget. The endowment fund has been transferred to a series of CDs to provide a laddered income, which should generate more interest income than previously.

Committee reports:

Acquisition – Lynn Welker reported the acquisition committee purchased a rare caprice compote as well as a green carnival inverted thistle pitcher. Mrs. Willard Kolb had continued to be gracious and donate items to the museum.

Auction – Jack Thompson reported lists were received from 44 consignors, of which 10 were consigning for the first time. The 775 lots were reviewed, with about 400 items being selected. Lorraine Weinman had done the photography of the auction items in the past but is not able to continue it this year. Jack thanked her for the service, and announced that David Rankin has offered to do the photography this year for the Crystal Ball, as well as provide the images to the Miami valley Study Group website.

Bylaws – The October 2010 Crystal Ball had a proposed modification to the bylaws: “In case of a tie vote for any board officer position, one revote will be conducted. If the vote remains tied, then the winner will be determined by a coin toss.” Larry Everett moved (second Frank Wollenhaupt) to accept the amendment. During discussion of the amendment, Ernie Gary moved to table the amendment and request the Board to reconsider the amendment. Motion to table was seconded by Allen Cohen. The motion to table the amendment passed.

Convention – Julie Buffenbarger and Nancy Finley are co-chairs. Nancy reported the theme is “Under the Sea”, and will asking for volunteers to do table centerpieces. The January Crystal Ball will contain the schedule.

Show & Sale – David Ray reported for Mary Beth Hackett and Joy McFadden. They have developed a dealer packet. Some information has already appeared in the Crystal Ball, and on the website. The goal is to fill the show with quality dealers.

Museum – Cindy Arent expressed thanks to Betty and Sandy for

an outstanding job at the museum. November and December are expected to be busy with about 40 tour buses scheduled. Volunteers to help are always appreciated.

Programs – David Ray thanked everyone for contributing to tonight's program on the re-opening period of Cambridge. A special thanks to Lynn Welker for conducting the program.

Upon hearing no further old or new business, Frank Wollenhaupt moved to adjourn, (second by Linda Roberts). Passed.

Meeting adjourned at 7:30 pm

Respectfully submitted, Freeman Moore

2011 NCC CONVENTION

JUNE 22-26, 2011

“UNDER THE SEA”

The sound of the surf lapping against the shore, warm rays of the sun reflecting off sand as white and pure as snow, conch shells and creatures extending along the whole expanse of the sea, and the deep blue and green of the ocean painted vividly against the horizon...all of these come to mind when thinking of the ocean and the sea.... that is unless you are in Cambridge, Ohio.

The Cambridge Sea contains great creatures and beauty. Seashells spanning the color spectrum of nature can be found. Those of moonstone, coral, emerald and forest green, moonlight, royal and Windsor blue, mandarin, carmen, amethyst, milk, amber and topaz dot our beach landscape. Dolphins, sea maids, turtles and silvery sea creatures captivate our attention as they dance across crown tuscan. This collection of fine specimens is reflected in the Krystolshell and Sea shell lines of Cambridge popularized in the 1930s and 1940s.

The 2011 Cambridge Convention pays homage to the sea and its inspiration to Cambridge Glass. Please join us June 22nd through June 26th to experience the beauty found “Under the Sea” in Cambridge, Ohio. Please read upcoming Crystal Ball issues to plan your journey to the Cambridge Sea.

If you have any questions or suggestions, please contact Julie Buffenbarger:

julie.buffenbarger@gmail.com.

The Bishops Visit the Cambridge Museum for the First Time

Editor: Chuck, Ann & CJ Bishop from Fountain Inn, South Carolina, made a trip "up north" in November and stopped by to visit the Museum for the first time. I asked them to write about the experience. CJ has had an article printed in an earlier Crystal Ball and is very proud of his collection.

From Chuck: During our recent adventure to Northern Ohio to pick up our new puppy, we had the pleasure of staying overnight in Cambridge where our friends Steve and Helen Klemko had arranged a tour of the Cambridge Glass Museum. Over the years we have admired the new pieces that Helen and Steve have added to their collection; however I guess one tends to collect the items one likes, and I was amazed at the variety of colors and styles that were created over the years. Our son, CJ, especially enjoyed learning how the glass was handcrafted. He spent quite some time with Sandi Rohrbough asking many questions. He negotiated with Mr. Rich Bennett and I believe they arrived at a price to unlock his room for viewing. Thanks to everyone for opening the Museum and allowing us to share in the Cambridge Glass history.

From CJ: The Cambridge Glass Museum is an amazing scene. From the emerald dog to the crown tuscan mannequin head, all you can see is glass. It was interesting to me how a "thump" to different types of glass makes different sounds. The edges of Cambridge glass is very smooth, others it is not. Cambridge passed their molds down to other glass making companies, so not everything that looks like Cambridge glass is actually made by Cambridge. Ms. Rohrbough was very nice and knowledgeable and even let me try on hats and aprons like the factory workers wore.

I found the etching process interesting. They used ink and rubbed on a metal engraving plate to make the design. We got to make one with a crayon at the museum on paper. This is what I thought was most interesting about the process. I really enjoyed learning more about the glass I collect.



Heritage Society

Are you at a loss for words? Do you have a collection of Cambridge glass that you enjoy, but would like to make arrangements to Will it to NCC and don't know how to go about having your wishes carried out? I know how difficult it is at times to say exactly the "right" thing. Thanks to a joint effort with Steve and Helen Klemko we have some suggested wording for inclusion in a Will for anyone considering joining the Heritage Society. We encourage you to consult with an attorney to ensure that your wishes are conveyed correctly. The EIN number in the paragraph below is the NCC's identification as a tax exempt non-profit organization.

The following wording was checked by an attorney, but you should still seek legal counsel in your state:

"I will devise and bequeath my entire collection of Cambridge Glass, located at my residence, to the National Cambridge Collectors, Inc., Cambridge, Ohio (EIN 23-7366120) for display at the National Museum of Cambridge Glass located in Cambridge, Ohio. The National Cambridge Collectors, Inc. may sell any part of the collection for the benefit of the organization. My Personal Representative/Executor must contact the Museum Director at (704)432-4245, to obtain specific instructions regarding identification, packing, and transferring of this collection. Any costs associated with packing and shipping to be paid from the estate upon receipt of vendor invoices."

This is only one example of a gift to the NCC. Other possibilities include monetary donations, stocks and bonds, or other items of value. If you have questions or would like to discuss being a member in the Heritage Society please contact me: Larry Everett heartlamps@sbcglobal.net, or at my work phone (937) 328-3860.

ASSISTANT REGIONAL CRYSTAL BALL EDITORS

Would you like to be part of the Crystal Ball production?

Your Editor is looking for several Assistant Editors to help with items for the Crystal Ball. You would have the opportunity to interact and work with the membership to obtain articles and photos for upcoming issues of our wonderful publication. We are looking for interested members, with friends among the membership to work with them suggesting topics of interest, helping with the writing (if needed) of the articles and forwarding them to the Editor for review. Your assistance and suggestions will be vital to the continued growth of NCC. If you are interested, please drop an email to the Editor at ncccrystalball@charter.net.

Cambridge Perfume Bottles II - by Mark Nye

The first part of this two part series was written to be published in an all color issue. Hence, rather than distract from the color by using reproduced portions of black and white catalog pages, a number of perfumes were briefly described and a reference made to the catalog in which they appeared. For the most part these perfumes are seldom seen today and when one does appear, it can be difficult to identify it as being of Cambridge origin.

The first perfume found in a Cambridge catalog was described as "3 oz. cologne, G. S." and appeared in a catalog issued circa 1916. The existing copy of this catalog was well used and during its use, "marked up." However, the cologne, located in the upper left corner of the page, escaped almost without markings as seen in Illustration 1.



Illustration 1

The No. 2699 Buzz Saw Design appeared in the same circa 1916 catalog and with it, a 6 oz tall cologne bottle and stopper. (Illustration 2) Also shown in the 1916 catalog is the No. 2351 line and its Cologne Bottle and stopper. It was made in 2 sizes, 8 and 12 oz. (Illustration 3)



Illustration 2

Continuing on in the same circa 1916 catalog one finds the page captioned "Glass Containers." Many of the items illustrated on this page are candy containers; however two could easily serve as cologne bottles and each comes in two sizes. These are the Nos. 2669 and 2675 single handled, and 2667 and 2668 with double handles. (Illustration 4)



Illustration 3

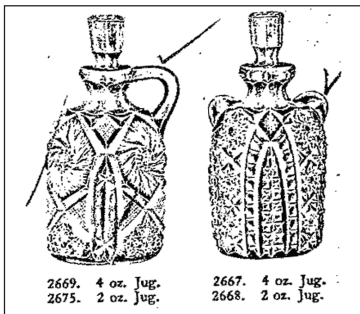


Illustration 4

The 2800 Community Crystal Line, seen in Catalog No. 10, dating to circa 1920, contained a single perfume bottle, the No. 75 7 oz. cologne. (Illustration 5)



Illustration 5

There are two pages in Catalog No. 10, one captioned "Oil Bottles" (Illustration 6) and the other "Pressed and Cut Novelties," (Illustration 7) having illustrations of cologne bottles. Other than the captions on the page of oil bottles, it is difficult to tell which is an oil bottle and which is a cologne. This is not true on the other page, where

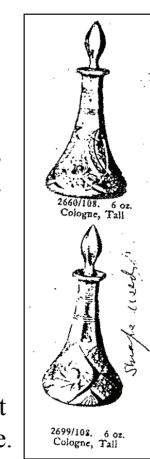


Illustration 6

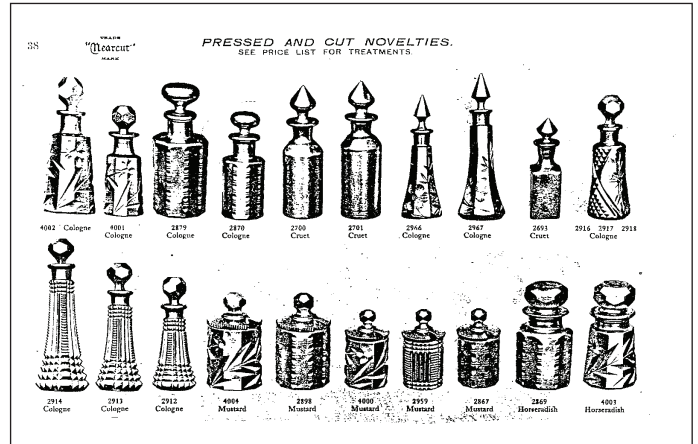


Illustration 7

the colognes share space with tooth picks, shakers, mustards and other dissimilar items. Only the top two rows of this page are reproduced here.

The deep plate etching Wedgewood is well illustrated in Catalog No. 10 and included among the items offered are two colognes, The No. 16, a 4 oz. cologne and No.17, in the same style but this one holding 8 oz. (Illustration 8)

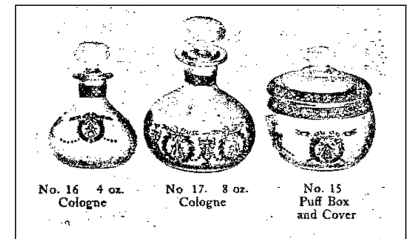


Illustration 8

In Part I, it was mentioned that damaged perfume bottles with metal atomizer caps attached had been found buried on the Cambridge factory site. The question was raised whether these were applied for a Cambridge wholesale customer, who would later apply the rest of the atomizer apparatus, or if this was an indication Cambridge sold perfume atomizers. Initial inspection of the caps led to the conclusion that they were not of DeVilbiss quality. Since then additional experts in the field of Cambridge and related perfumes have examined the pieces and concluded the fittings were indeed not DeVilbiss fittings; rather they are typical of those seen on Vant Woud bottles. It is known Cambridge produced bottles for Vant Woud. As the result of finding the broken bottles, it can now be concluded that Cambridge also applied the metal cap to at least some of the bottles before shipment to Vant Woud.

At the time the bottles were found, most, if not all, had a broken foot. The initial speculation was the foot was broken during the application of the metal cap, the assumption being some type of pressure was used during the process. This is not true, no pressure is used. The metal cap is fastened to the glass collar using a small amount of plaster of paris, the same process used in making of oil lamps. How then did the feet get broken? Perhaps a worker dropped a tray of finished bottles in such a manner only the foot was broken. No doubt the answer will remain a mystery.

ONLY QUESTIONS - NO ANSWERS

By Frank Wollenhaupt (fewvic303@sbcglobal.net)

First I want to thank Mr. Walker for taking the time to send me an email on his thoughts about Vaseline glass. Mr. Walker, a professional geologist by trade, has a slightly different view on Vaseline glass than most people. Like he said, "one cannot convince minds that are already made up".

I missed the Cambridge Holiday Parade this year. It was held on Sunday instead of Saturday because of the Ohio State football game. Can you believe that? I hope its back to Saturday next year. We need to give the Museum group a pat on the back for another great float..... we won again. GREAT!

I think this year was pretty successful at the museum. We had numerous tours and sold many things out of the gift shop. It's nice that everyone can take a few months off and rest up for the 2011 season – WRONG – I don't know if many of members realize what a busy time of the year it is for all the Cambridge members and Museum staff. This is the "Dickens Victorian Village" time. It is the time of the year that the rest of us get ready for Christmas and worry about if we will get it all done.

Well, the Cambridge people have one extra problem. They need to make sure that the Museum is staffed so they can take care of all the tour groups that make the trip to the area. They are coming to Cambridge to see the Dickens characters, the courthouse and take a tour through the Cambridge Museum. I think one day last week, they had 3 or 4 tours. What a job it is for the local Cambridge people to keep up.

I know a lot of you are probably saying....."If I only lived closer, I could help" I think a lot of us say that. But how many of you have taken that extra step to see if there is anything you could do from afar?

A couple of thoughts.....you could donate some extra Cambridge glass to the Museum gift shop. It doesn't need to be anything fancy. Signed items are always good. The little sea shell nut cups sell well. The bridge hounds are another great item. Color is always good. We have found that people are starting to purchase some higher dollar items also.....so if you have any extra nudes,

swans or flower frogs, they would be a great addition. The next time you are in Cambridge, take a look around at the museum. We have lots of pretty glass and some neat displays but do you realize that the club doesn't own all that glass? We, the organization, probably own only 20 – 30% of the glass. The rest of the collection is on loan. You might think about donating a special piece of glass in memory of a lost parent or partner. What about taking this time to remember the Museum in your Will?

We are all working hard to help grow the endowment fund but as it stands now, we could only keep the museum open for a year or two with the money we have saved. If you enjoy the Cambridge museum and appreciate what the great museum staff and volunteers from Cambridge do for us all, take this time to remember them. They deserve a big thank you.

Hope you received that special piece of Cambridge for Christmas but if you didn't, the auction is only a few months away.

Till the next time.....keep hunting.



Dickens mannequins on display in Cambridge for the Christmas season.



by Larry Everett

This report is provided to keep members up with what's happening on the world's largest Internet Auction site. It is not meant as an educational tool, nor as a pricing guide, and we cannot guarantee the accuracy of listings herein.

Greetings from eBay land! Please forward interesting news to me at: heartlamps@sbcglobal.net. Susan and I wish everyone a happy, healthy and prosperous new year! May you find that special Cambridge item this year!

Rose Point

On Nov 22nd a hard to find P. 299 covered Rose point candy with the Carmen rose finial ended at \$151. On Nov 21st four hard to find 3400/1341 - 1 oz. (mushroom) cordials sold; prices ranged from \$91 to \$76 each. On Nov 20th an elusive No. 103 - 38 oz. Guest Room Jug and Tumbler (tumble up set) found a new home for \$457. On Nov 19th a rare 3900/52 - ¼ lb. Butter and Cover managed \$399.99. On Nov 17th a very desirable 4" trivet in a Wallace Sterling holder sold for a mere \$125. On Nov 16th a rare P. 290 6 oz. oil w/ground stopper went to a new home for \$316.11.



Statuesque

I found only one example worth reporting this month. On Oct 31st a Royal Blue 3011 - Cigarette Box and Cover and a Royal Blue 3011 Ash Tray were sold together for \$560.05.

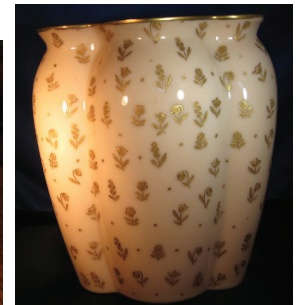
Other Etchings

A rare Pink No. 170 - 9 oz. Syrup with a Chrome Plated Slip-on Top etched Cleo was sold on Nov 28th for \$138.50. A very desirable Amethyst 3400 /4 - 12" 4-toed Bowl w/matching No. 646 - 5" one lite candlesticks etched SE Apple Blossom brought \$239.49 on Nov 23rd. On Nov 22nd a rare Portia crystal 1228 (pillow) - 9" Vase, ended at only \$209.49. A few minutes earlier an even rarer signed Crown Tuscan 1228 - 9" vase GE Chintz managed only \$200. Speaking of rare, how about a Pink No. 880/881 - 5-piece Bridge Set with Golf Scene etching; which consists of a No. 880 Tray and (4) 881 Tumblers was hammered down for \$250. On Nov 7th a rare Lt Emerald 28 oz. 3075 Decanter w/hollow stopper, etched Imperial Hunt Scene ended on Nov 7th for \$407. On Nov 19th a very rare 119 Crown Tuscan basket GE Portia was welcomed into a new home for \$963.53. I haven't ever used the "rare" word so often in one paragraph.



Miscellaneous

For a change of pace, a set of six No. 2 (Rooster) - 5" muddlers sold on Nov 18th for \$67. On Nov 17th a beautiful #14 Ebony Everglade bowl (Tulips) with LaFleur highlights sold for \$199.99. On Nov 23rd a rare Everglade #1 10" Amber Leaf Bowl sold for \$250. This bowl was frosted between the leaves and appeared to be two tone because of the different thicknesses of glass. A signed Crown Tuscan 3400/102 - 5" Globe Vase with Black Enamel highlights sold for \$305 on Nov 14th. A set of five #1380, 26 oz decanters (etched Brandy, Scotch, Rye, Bourbon, and Gin) brought only \$55. A wonderful pair of #69 Moonlight Caprice candleholders with single prisms brought \$616 on Nov 1st. The last item this month is a real beauty. On Oct 20th a rare Ebony 6" Bunny Box w/cover was hammered down for \$1,800. I hope you found it under the tree.



Happy hunting!



National Cambridge Collectors, Inc.

2011 Benefit Auction

Saturday, March 5, 2011

Pritchard-Laughlin Civic Center

7033 Glenn Highway • US 40, West • Cambridge, Ohio

INFORMATION

Preview at 9:00 a.m. Auction starts at 10:00 a.m.

Craig Connelly, Auctioneer Admission: \$2.00

All glass in the auction is guaranteed to be Cambridge. The Auction Committee has checked all glass carefully for verification and damage. Any piece purchased should be examined immediately by the purchaser, and returned within five items if not as represented. All damages are indicated in this catalog; last minute changes or addenda will be announced by the Auction Committee immediately prior to the auction. If no color is indicated herein, the item is crystal.

TERMS: Payment is expected in cash the day of the sale; checks will be accepted with proper identification.

CATALOG: Lots will be sold in the order printed herein. A number in parenthesis () at the end of a listing indicates the number of that item available for sale. The auctioneer will announce whether such multiples are being sold individually or as a lot. If multiple items are being sold individually, a winning bidder may take any number available. If the catalog indicates “set,” “pair” or a similar term, the lot is sold as such.

MAIL BIDS: All absentee bids must be accompanied by a separate check for the maximum bid on each lot. Checks are to be made payable to: National Cambridge Collectors, Inc. Bids will be executed secretly and a winning bidder will pay only the final auction price. Refunds for bid overages will be sent to bidders immediately after the auction. If you are not successful, you will be notified by mail and your check(s) returned to you. All absentee bids must be accompanied by a stamped, self-addressed envelope. Any questions can be emailed to the committee at jack1746@roadrunner.com.

SHIPPING: Absentee bidders who wish their items shipped should include check for shipping charges. The check can either include an estimated amount or can be left blank. Items can be shipped to street addresses only. **WE CANNOT SHIP TO P.O. BOXES.**

MAILING ADDRESS: All absentee bids must be mailed to:

NCC Auction Committee

P.O. Box 416

Cambridge, OH 43725

**BIDS MUST BE RECEIVED BY
THURSDAY, MARCH 3, 2011 TO BE ELIGIBLE**

QUARTERLY MEETING: The Quarterly Meeting of the NCC will be held on Friday, March 4th at 7:30 p.m. A preview of the auction glass will be presented. Show & Tell glass is welcome at the meeting.

If you require additional copies, the catalog listing is available on the website at www.cambridgeglass.org under **Annual Auction**.

Additional copies of this catalog are included with admission to the auction.

2011 NCC Benefit Auction Listing

- 1 _____ #3400/14 - Gold Krystal 7" Tall Comport, Etched Gloria
- 2 _____ #15 - Azurite 8" Bowl, Black Enamel Etched #625 on Rim & Foot
- 3 _____ #3900/166 - Crystal 14" Plate, Rolled Edge, Etched Rose Point
- 4 _____ #707 - Peach-Blo 11" Footed Square Cake Salver, Etched #739, Gold Edge
- 5 _____ #1141 - Crystal Lady Legs Book Ends (Pair), Hard To Find
- 6 _____ #3400/62 - Heatherbloom 8-1/2" Salad Plates (6), Signed
- 7 _____ #39 - Light Emerald 11-1/2" Bowl, Etched #704
- 8 _____ #3500 - Crystal 6 oz. Tall Sherbets, Etched Elaine, Gold Edge (4)
- 9 _____ #2699/215 - Crystal Near Cut Buzz Saw Quart Tall Tankard Jug
- 10 _____ #437 - Goldenrod 9-1/2" Candlesticks (Pair), Rare Color
- 11 _____ #99 - Crystal Pristine 46 oz. Cocktail Shaker w/ Chrome Top, Etched Wildflower
- 12 _____ #3011/25 - Royal Blue Statuesque Ivy Ball, Crystal Stem & Foot
- 13 _____ #1337 - Crystal Cigarette Holder, Ashtray Foot, Cut Adonis
- 14 _____ #3575 - Moonlight Blue 1 oz. Stradivari Regency Cordial
- 15 _____ #39 - Pomona Green (Avocado) 11-1/2" Bowl, Gold Encrusted #527 Rose
- 16 _____ #1136 - Crystal 9" Heron Figure Flower Holder
- 17 _____ #847 - Amber Decagon Ice Pail, Etched Cleo, Signed
- 18 _____ #3400/18 - Pink Salt & Pepper Shakers, Etched Apple Blossom
- 19 _____ #3450 - Amethyst 40 oz. Nautilus Decanter & Cocktails (8), (Set)
- 20 _____ #7801 - Crystal 2-1/2 oz. Crème de Menthe, Etched Portia, Rare
- 21 _____ #300 - Amber 6" Covered Candy, White Gold E714 Band Decoration on Lid
- 22 _____ #1042 - Mandarin Gold 6-1/2" Swan, (chip on fin)
- 23 _____ #82 - Azurite 10" Vase, Deco Sterling Silver Décor, (top rim silver gone)
- 24 _____ #885 - Peach-Blo Cigarette Jar w/ Ashtray Cover, Hunter Intaglio Lid
- 25 _____ #3500/154 - Crystal 3-Lite Candlesticks, Etched Elaine (Pair), Unusual
- 26 _____ #518 - Moonlight Blue 8-1/2" Draped Lady Figure Flower Holder
- 27 _____ #488 - Mulberry Night Set (#488 - 9-1/2" Tray, #107 - 22 oz. Jug & Lid, 8161 - 7 oz. Tumbler)
- 28 _____ #W70 - Milk Glass Mount Vernon 11 oz. Decanter, Charleton Rose Décor
- 29 _____ #532 - Crystal 6-1/2" Tall Comport, Gold Silkscreen Talisman Rose
- 30 _____ #3011/10 - Forest Green Statuesque 3 oz. V Cocktail, Crystal Stem & Foot, Rare
- 31 _____ #2836 - Crystal Near Cut Fish Tumbler
- 32 _____ #1300 - Crown Tuscan 8" Footed Vase, Etched Diane, Gold Encrusted
- 33 _____ #10 - Light Emerald Everglade Candlesticks (Pair)
- 34 _____ #1380 - Crystal 26 oz. Square Decanters & Stoppers, 1 Etched Scotch & 1 Etched Rye (2 Total),
1 Stopper Monogram "R", (both stained)
- 35 _____ #198 - Experimental Orange/Yellow Perfume w/ Dauber
- 36 _____ #299 - Amber 6" Covered Candy, Etched Cleo, Signed
- 37 _____ #430 - Crystal Pristine 12" Belled Bowl, Sterling Silver Base, Etched Chantilly
- 38 _____ 7A Mardi Gras 6" Vase, Cambridge Label, Very Rare
- 39 _____ #7 - Crystal Everglade 11" Bowl, 3-Ftd. Belled, & #10 - 3-1/2" Candlesticks (Pair), (Set)
(1 candlestick has manufacturing flaw)
- 40 _____ #1121 - Light Emerald Ice Pail, Not Original Handle, Etched Chrysanthemum, Signed
- 41 _____ #34 - Ivory 10" Bowl & 9-1/2" Ball Stem Candlesticks (Pair), All w/Enamel Hanging Basket & Floral Gold Trimmed, (Set)
- 42 _____ #3011/40 - Crown Tuscan Seashell 10" Flower or Fruit Center (Flying Lady Bowl)
- 43 _____ #1321 - Crystal 28 oz. Decanter, Etched Elaine, Gold Encrusted (minor bruise to stopper)
- 44 _____ #639 - Bluebell 4-1/2" Candlesticks (Pair)
- 45 _____ #2966 - Light Emerald Near Cut Floral Panels Atomizer, Devilbiss Fittings, Bulb Missing, Very Rare
- 46 _____ #502 - Crystal Pristine 6" 2-Lite Candelabra, 2 No. 4 Prisms, Cut Belfast
- 47 _____ #3400/71 - Peach-Blo 3" 4-Toed Nut Dish
- 48 _____ Ebony 7-1/2"H x 10"W Ftd. Comport, Gold Encrusted D610
- 49 _____ SS44 - Carmen 6" Seashell Flower Center, Crystal Foot
- 50 _____ #447 - Primrose Mayonnaise & Ladle, Unknown Gold Border Etching, (some wear)
- 51 _____ #3011/9 - Topaz Statuesque Cocktail, Crown Tuscan Stem & Foot, Rare
- 52 _____ #104 - Helio 6" Round Candy Box & Cover
- 53 _____ #1554 - Crystal Small 10-1/2" Cornucopia Centerpieces (Pair)
- 54 _____ #244 - 10-1/2" Service Plate, Blue Enamel Etched Willow Scene, Gold Trim, (etch slip on rim)
- 55 _____ #2671 - Near Cut 12" Heavy Vase, (small roughness at base)
- 56 _____ #1315 - Bluebell 5" Rabbit Box & Cover, Rare
- 57 _____ #277 - Ebony 9" Ftd. Vase, Etched Blossom Time, Gold Encrusted (minor chip top edge)
- 58 _____ #498 - Light Emerald 8 oz. Tumbler, Etched Golf Scene
- 59 _____ #1221 - Crystal 15-Pc. Swan Punch Set (#1221 - 16" Bowl & Base, #1221 - 5 oz. Cups (12), #485 - Ladle), Cambridge Label

- 60 _____ Amethyst Farber Tall Nude Comport
- 61 _____ #7966 - Crystal 1 oz. Cordials, Gold Silk Screen Talisman Rose (4)
- 62 _____ Crown Tuscan Lamp Made From #6004 - 10" Vase, Etched Portia, Gold Encrusted
- 63 _____ #3085 - Ebony 2-1/2 oz. Whiskey, Etched Hunt Scene, Gold Encrusted, (pinhead on base), Hard To Find
- 64 _____ Jade 6" Atomizer, Gold Sponged
- 65 _____ #1602 - Crystal 8-5/8" Candlestick, Pristine Foot, Satin on Christ Figure
- 66 _____ #1043 - Peach-Blo 8-1/2" Swan, Signed
- 67 _____ #1705 - Crystal Ice Pail, Etched Portia, Unusual
- 68 _____ #319 - Heatherbloom 9 oz. Georgian Tumbler (tiny imperfection on rim)
- 69 _____ SS30 - Crown Tuscan Seashell 9" 4-Toed 3 Compartment Relish, Charleton Décor, (slight gold wear)
- 70 _____ #3105 - Amber Pressed Rose Point 1 oz. Cordial, Hard To Find
- 71 _____ #1261 - Crystal French Dressing Bottle, Etched Chantilly and Oil & Vinegar, Sterling Foot & Stopper
- 72 _____ #3500/15 - Forest Green Individual Cream & Sugar, (Set)
- 73 _____ Azurite Perfume Lamp w/ black enamel ring, Ebony Base (needs new wiring)
- 74 _____ #3011/2 - Carmen Statuesque Table Goblets (2)
- 75 _____ #3500/86 - Crystal 10" 3-Compt. Celery & Relish, Etched Valencia, No Feet, Unusual
- 76 _____ #3400/18 - Willow Blue Shaker, Chrome Top, Etched Apple Blossom
- 77 _____ #3400/67 - Crystal Frosted 12" 5-Part Celery & Relish, Silver Border Décor, Bottom Floral Cut
- 78 _____ #3143/39 - Moonlight Blue 86 oz. Ice Lipped Gyro Optic Pitcher & #3143/50 - 13 oz. Tumblers (6), (Set)
- 79 _____ #3400/1186 - Amber 12-1/2" 2-Hld. Plate, Etched Portia, Gold Encrusted, Signed, (slight trim wear)
- 80 _____ #3400/38 - Crystal Satin 80 oz. Ball Jug, Rockwell Sterling Silver Overlay Geese, Rare
- 81 _____ #2699/110 - Crystal Near Cut Buzz Saw 4 oz. Perfume, Original Stopper, Signed
- 82 _____ SS21 - Crown Tuscan Seashell 6" Ftd. Candy Box & Cover, Gold Trim, (trim wear)
- 83 _____ #3797/68 - Cambridge Square 2-Pc. Hurricanes (Pair)
- 84 _____ #3011/7 - Heatherbloom Statuesque 4-1/2 oz. Claret, Optic Bowl, Crystal Stem & Foot
- 85 _____ #1202 - Smoke 12 oz. Georgian Tumbler, Cambridge Label
- 86 _____ SS11 - Mandarin Gold Statuesque 7" Seashell Comport, Hard To Find
- 87 _____ #1129 - Crystal Lion Book Ends (Pair)
- 88 _____ #3700 - Crystal 1 oz. Cordial, Cut King Edward
- 89 _____ #1612/1614 - Crystal Hurricane Lamp, Etched Diane, 16" Dolphin Base w/ Incorrect Bobeche & 8 Prisms,
Shade Cut Down
- 90 _____ #1122 - Light Emerald Ice Bucket w/ Smooth Chrome Handle & Tongs, Etched #732, Signed
- 91 _____ #509 - Moonlight Blue 2-Kid Figure Flower Holder, Rare
- 92 _____ #3400/92 - Carmen 32 oz. Decanter, Farber Chrome Holder
- 93 _____ #138 - Amber Cream & Sugar, Etched Willow Scene, (Pair)
- 94 _____ Original Cambridge Glass Co. Payroll Sheets (1 Complete Week), Turn Cards, Checks, Envelope, Invoice, Voucher, (Lot)
- 95 _____ #1321 - Amethyst 28 oz. Decanter & #7966 - 2 oz. Sherries (3), All With Pewter Relief Grapes
- 96 _____ #518 - Peach-Blo 8-1/2" Draped Lady Figure Flower Holder & 11" Flip Bowl Etched #704, (Set)
- 97 _____ #3011/13 - Pistachio Statuesque 1 oz. Brandy
- 98 _____ #437 - Jade 9-1/2" Candlesticks, Gold Laurel Band Décor (Pair)
- 99 _____ #2860/10 - Amber Near Cut Lexington Berry Cream & 2 Handled Berry Sugar, (Set), Rare
- 100 _____ Milkglass Rolling Pin, Original Handles
- 101 _____ #106 - Blue-1 66 oz. Jug w/ Cover, Floral Cutting
- 102 _____ #851 - Light Emerald Decagon Ice Pail w/ Chrome Handle & Tongs, Etched Imperial Hunt Scene, Signed
- 103 _____ #607 - Crystal Cigarette Box & Cover, Pointer Dog on Lid, (tiny mold rough under lid)
- 104 _____ #3500/78 - Crystal 6" Candy Box & Cover, Etched Elaine
- 105 _____ #432 - Azurite 8-1/2" Ram's Head Bowl
- 106 _____ #3011/10 - Amethyst Statuesque 3 oz. V Cocktail, Crystal Stem & Foot, Rare
- 107 _____ #4000/72 Crystal Cascade 6" 2-Lite Candlesticks (Pair), & #4000/165 Candy Box and Cover, (Set)
- 108 _____ #279 - Amber 13" Ftd. Vase, Etched #E717, Gold Encrusted
- 109 _____ #1402/100 - Carmen Tally Ho Goblet, D1007/8 Gold Silk Screen Overlay
- 110 _____ #441 - Light Emerald 10-1/2" Comport, Etched #732
- 111 _____ #2660 - Near Cut Wheat Sheaf 11-3/4" Footed Tankard Jug, Unusual
- 112 _____ #520 - Topaz Budha for Lamp (large chip on bottom fitter ring)
- 113 _____ Amethyst 5-1/2" Comport, Pierced Grape Design, w #5562 Farber Chrome Holder
- 114 _____ #1570 - Crystal Cheese Preserver Jar & Lid
- 115 _____ #676 - Amber 11-1/2" Flip Bowl, Etched #725, Signed
- 116 _____ #112 - Mulberry 7" Gem Plate, Rare In This Color
- 117 _____ #3400/71 - Crystal 3" 4-Toed Nut Dish, Etched Apple Blossom
- 118 _____ SS16 - Crown Tuscan Sea Shell 7" Comport, Charleton Harbor & Roses Décor, Charleton Label
- 119 _____ #3011 - Crystal Nude Lamp
- 120 _____ #993 - Carmen 12-1/2" 4-Ftd. Bowl, Signed
- 121 _____ #3126 - Mocha 1 oz. Cordial, Optic

122 _____ #1128 - Crystal Scottie Dog Book End
 123 _____ #593 - Peach-Blo 12" Pristine Flip Vase, Crackle, Hard To Find
 124 _____ #3400/11 - Crystal 2-Pc. Mayonnaise Set (Comport, Plate), Etched Diane
 125 _____ #2658 - Marigold Carnival 4" Nearcut Advertising Pitcher, "Graceville, Minn"; Signed Nearcut
 126 _____ #10 - Heatherbloom Martha Washington 5-1/2" Comport
 127 _____ #1115 - Willow Blue 11" Bashful Charlotte Figure Flower Holder, Satin Finish, (satin over manufacture chip) Rare
 128 _____ #3400/45 - Crown Tuscan 11" 4-Toed Bowl, Etched Candlelight, Gold Encrusted, (slight trim wear)
 129 _____ #3500 - Carmen 10 oz. Goblet, Gold Encrusted D/1037 (rim gold worn)
 130 _____ P54 - Crystal Pristine 6-1/2" Low Ftd. Comport, Etched Columbine, Gold Encrusted
 131 _____ #109 - Light Emerald Stratford 9-1/2" Dolphin Candlesticks, Acid Treatment, Gold Encrusted Candle Cups (Pair)
 132 _____ #1095 - Willow Blue Decagon 3-Piece Cream & Sugar Set, Lightning Bolt Handles
 133 _____ #3400/1240 - Amythest 12" Oval 4-Ftd. Bowl
 134 _____ #3400/4 - Crystal 12" 4-Ftd. Bowl, Etched Rosepoint, Gold Process Sample, Very Rare
 135 _____ #3143/38 - Forest Green 80 oz. Ball Jug, Iced Lipped, Gyro Optic, & 3143/50 - 13 oz. Tumblers (6), (Set), Original Labels
 136 _____ #3797/85 - Crystal Cambridge Square 32 oz. Decanter & Stopper, Cambridge Tag on Bottom
 137 _____ #3121 - Crystal 3 oz. Cocktails, Etched Rose Point (6), (1 rim ground w/nick)
 138 _____ #1050 - Crystal 4-1/2" Swan Candleholders (Pair)
 139 _____ #319 - Topaz 8 oz. Georgian Tumber, Hard To Find
 140 _____ #968 - Crystal 2-Piece Cocktail Icers, Etched Portia (2 sets)
 141 _____ #1402/10 - Carmen 3 oz. Pressed Cocktails (4)
 142 _____ #35 - Mandarin Gold Mount Vernon 8" Candlesticks (Pair), Unusual
 143 _____ #3105 - Amethyst Claret, Pressed Rose Point, Rose Point Label
 144 _____ #1070 - Amber 36 oz. Pinch Decanter, Golf Ball Stopper, Cambridge Label & Matching 2 oz. Tumblers (6), (Set)
 145 _____ #3011/9 - Royal Blue Statuesque 3 oz. Cocktail, Crown Tuscan Stem & Foot, Hard To Find
 146 _____ #1121 - Peach-Blo Ice Pail w/Tongs, Not Original Handle, Etched Water Lily, Signed
 147 _____ #3130 - Crystal 1 oz. Cordial, Cut Cordelia
 148 _____ #213 - Windsor Blue Seashell 2-3/4" Individual Ash Tray w/Placecard Holder
 149 _____ #98 - Pink 5" 3-Compt. Covered Candy, Light Emerald Rose Knob
 150 _____ #3085 - Ebony 6 oz. Sherbet, Etched Hunt Scene, Gold Encrusted, Hard To Find
 151 _____ Topaz Handled Samovar, Etched Martha (spigot missing), Converted Into Lamp
 152 _____ #3130 - Gold Krystol 1 oz. Cordial
 153 _____ #3797 - Cambridge Square Sherbets (6)
 154 _____ #627 - Light Emerald 4" Candlesticks, Etched 715 Willow (Pair)
 155 _____ #3400/156 - Carmen 12 oz. Decanter, Gold Encrusted Bordeaux Etch (gold trim wear, pinhead nick top edge), Rare
 156 _____ #3400/99 - Crystal 6 oz. Oil, G.S., Etched Diane, (small damage at handle)
 157 _____ Turquoise "Saratoga" Hat Toothpick Or Match Holder
 158 _____ #3011/13 - Moonlight Blue Statuesque 1 oz. Brandy
 159 _____ #1125 - Mystic Blue 15-1/2" Buffalo Hunt Scene Bowl
 160 _____ #3400/851 - Light Emerald Ice Pail, Etched Diane, Signed, Hard To Find
 161 _____ #63 - Ivory 6" Tall Comport & #1273 - 9-1/2" Candlesticks (Pair), (Set)
 162 _____ #3121/1 - Crystal 5-3/8" Blown Tall Comport, Etched Rose Point
 163 _____ Mardi Gras 5-1/4" Cylinder Vase, (inner bubble chips)
 164 _____ #432 - Ivory 8-1/2" Ram's Head Bowl, & #65 - 9-1/2" Doric Column Candlesticks (Pair), (Set)
 165 _____ Glass Worker's Cane - 44" Long, Crystal w/Amber Swirl, Mercury Interior, Rare
 166 _____ #3400/38 - Crystal 80 oz. Ball Jug, Etched Apple Blossom
 167 _____ #36 - Ebony Everglade 12" Oval Bowl, Tulip Design, Smooth Rim, Satin Background, Unusual
 168 _____ #3011/9 - Carmen Statuesque 3 oz. Cocktails (2)
 169 _____ #84 - Mulberry 12" Vase, Etched #708, Gold Encrusted, (large inside rim chip)
 170 _____ SS10 - Crown Tuscan Statuesque 5-1/2" Seashell Comport, Charleton Blue Mist Décor
 171 _____ #1 - Amethyst Caprice 10 oz. Goblet, Rare
 172 _____ #110 - Moonlight Blue Caprice 6" Twin Salad Dressing Bowl & 2 Matching Ladles
 173 _____ #66A - Crystal Caprice Banana Bowl, Hard To Find
 174 _____ #236 - Crystal Caprice 8" Rose Bowl, 4-Ftd.
 175 _____ #52 - Crystal Caprice 1/4 lb. Butter & Cover
 176 _____ #237 - Crystal Caprice 4-1/2" Ball Vase
 177 _____ #178 - Moonlight Blue Caprice 80 oz. Doulton Jug (crack in handle), Rare
 178 _____ #58 - Crystal Caprice 10" Square Bowl, 4-Ftd., (scratch)
 179 _____ #31 - Crystal Caprice 13" Cake Salver (#36 - 13" Cake Plate & #628 - 3-1/2" Candlestick Base)
 180 _____ #301 - Crystal Caprice Sherbets (8)
 181 _____ #145 - LaRosa Pink Caprice 5" 2-Hld. Lemon Plate & #152 - 6" 2-Hld. Lemon Plate, Set

- 182 _____ #178 - Crystal Caprice 80 oz. Doulton Jug, Rare
183 _____ #49 - Crystal Caprice 8" Salad Bowl 4-Ftd.
184 _____ #81 - Moonlight Blue Caprice 11-1/2" Shallow Cupped Salad Bowl, 4-Ftd.
185 _____ #183 - Crystal Caprice 80 oz. Ball Jug
186 _____ #1338 - Carmen Caprice 3-Lite Candlesticks (Pair), Rare
187 _____ #337 - Crystal Caprice 4-1/2" Vase
188 _____ #112 - Crystal Caprice Ftd. & Hld. Twin Salad Dressing Bowl, No Ladles
189 _____ #70 - Moonlight Blue Caprice 7" Candlesticks & Prisms (Pair)
190 _____ #17 - Crystal Caprice Cups (7) & Saucers (12) (Set)
191 _____ #152 - Late Mulberry Caprice 2-Hld. Lemon Plate
192 _____ #1564 - Crystal Caprice 5-Lite Candelabra, No Bobeche
193 _____ #508 - Pink 9" Mandolin Lady Figure Flower Holder
194 _____ #168 - Royal Blue 10" Center Hld. Sandwich Tray, Unknown Border Etch
195 _____ Azurite Top Hat, Marked "Cambridge Lodge 1922"
196 _____ #3400 - Amber Ball Jug Salt & Pepper; & #3500/69 - Amber 6-1/2" 3-Part Relish in Farber Holders, Lot
197 _____ #3500/2 - Crystal Goblet, Short Bowl, Etched Rosepoint, Hard To Find
198 _____ #432 - Helio 8-1/2" Ram's Head Bowl
199 _____ #1121 - Peach-Blo Ice Pail, Not Original Handle, Grey Cutting, Signed
200 _____ #3400/141 - Crystal 80 oz. Jug, Etched Elaine
201 _____ #227-1/2 - Topaz Low Candlesticks, Etched #704 (Pair)
202 _____ #6004 - Crown Tuscan 8-1/2" Vase, Charleton Gardenia Décor, Original Label ("Charleton Label Hand Decorated 706")
203 _____ Amethyst Handled Thermos w/ Mercury Insert, American Thermos Co., Rare
204 _____ #3400/6 - Amber 11-1/2" Cheese & Cracker, Etched Portia, Gold Encrusted, Signed
205 _____ #381 - Pomona Green (Avocado) 8-3/4" Flat Rim Soup Bowl
206 _____ #47 - Crystal Mount Vernon 11 oz. Decanter & #87 - 1 oz. Cordials (6), (Set)
207 _____ #513 - Moonlight Blue 13" Draped Lady Figure Flower Holder
208 _____ #95 - Azurite 1 lb. Candy Jar & Lid, Double Black Band on Foot, Rim & Lid
209 _____ Original Cambridge Glass Co. 1958 Catalog w/ Price List
210 _____ #993 - Crystal 12" 4-Ftd. Bowl (3 - 1" scratches) & #1307 - 3-Lite Candelabrum (Pair), All Etched Martha, (Set)
211 _____ #1330 - Carmen 5" Sweet Potato Vase
212 _____ #2647 - Crystal Near Cut Dorothy 10-1/2" Punch Bowl & Base (3 chipped teeth) & Hld. Custards (11),
(1 has small chip, 1 has cracked handle), Cups & Bowl Signed Near Cut
213 _____ #3011/14 - Amethyst Statuesque 1 oz. Cordial
214 _____ #3500/94 - Crystal 2-Lite Rams Head Candlesticks, Etched Elaine (Pair)
215 _____ #1147 - Light Emerald Decagon Ice Pail w/Tongs, Etched #733, Signed
216 _____ #3400/100 - Crystal 76 oz. Jug, Silver Overlay Poppy Decor
217 _____ #39 - Ivory 11-1/2" Bowl & #1271 - 6-1/2" Candlesticks (Pair), All w/Floral Enamel Décor,Gold Trim, (Set)
218 _____ Crystal Satin Frog
219 _____ Jade Perfume w/ Atomizer
220 _____ #138 - Crystal Sugar & Creamer, Sterling Bases, Etched Chantilly, (Set)
221 _____ #1283 - Crown Tuscan 8" Ftd. Vase, Ebony Foot, Hard To Find
222 _____ W82 - Milk Glass Mt. Vernon 7 oz. Marmalade & Cover, Cambridge Label
223 _____ #977 - Willow Blue Decagon 11" Basket, Etched #738, Gold Trim Decoration, Signed
224 _____ #3011/7 - Forest Green Statuesque 4-1/2 oz. Claret
225 _____ #3105 - Crystal 1 oz. Cordial, Pressed Rose Point
226 _____ #1327 - Amethyst & Amber 1 oz. Cordials (2 Total)
227 _____ 3400/48 - Crystal 13" 4-Ftd Bowl, Etched Rose Point
228 _____ Ebony Bathroom Bottles - #896 Etched Bath Salts, & #1194 Etched Boric Acid, & # 1195 Etched Toilet Water,
Mouth Wash, Hand Lotion, (5 Total) (Set), (nicks on top edge of lotion bottle)
229 _____ #732 - Pomona Green (Avocado) 12" x 6" 4-Ftd. Refectory Bowl
230 _____ #966 - Peach-Blo Individual Creamer, Unusual
231 _____ #18 - Pristine 2-Pc. Cockatil Icers, Cut Killarney (2)
232 _____ #1044 - Peach-Blo 10" Swan, Type 1, Signed, (chip back of tail)
233 _____ 10 ML Pharmaceutical Graduate, Original Box
234 _____ #68 - Carrara 10" Candlesticks, Gold Trim & Etched #527, (Pair), (trim wear)
235 _____ #1121 - Peach-Blo Ice Pail, Etched Tulip, Signed
236 _____ #518 - Crystal 8-1/2" Draped Lady Figure Flower Holder
237 _____ Jade 5-1/2" Perfume, Gold Sponged
238 _____ #3500/41 - Crown Tuscan 10" Covered Urn, Etched Chinz, Gold Encrusted, Acid Signature
239 _____ #496 - Crystal Pristine Architectural 5" Candlestick, Full Polish Sides

240	_____	#3085 - Emerald 1 oz. Cordial, Optic
241	_____	#2588 - Near Cut 10" Deep Orange Bowl, Signed Near Cut
242	_____	#3500/42 - Crown Tuscan 12" Covered Urn, Charleton Roses Décor
243	_____	#3400/92 - Amethyst 32 oz. Ball Decanter, Crystal Handle & Stopper, Silver Decorated Hunt Scene
244	_____	#104 - Peach-Blo Stratford 9-1/2" Sweet Meat, Signed (large)
245	_____	#437 - Light Emerald 9-1/2" Candlesticks (Pair), & #14 - 10" Honeycomb Bowl, Signed (Set)
246	_____	#3400/119 - Amber 12 oz. Ball Jug Decanter & #1341 - Matching Cordials (4), (Set)
247	_____	#168 - Azurite 10" Hld. Sandwich Tray (Version 1), w/ Beautiful Enamel Florals
248	_____	#1321 - Cranberry Flash 28 oz. Ftd. Sherry Decanters, Grape Cut Décor (2)
249	_____	#7966 - Crystal 9 oz. Goblets, Gold Silk Screen Talisman Rose (6)
250	_____	#847 - Peach-Blo Decagon Ice Pail, Etched Cleo, Signed
251	_____	#3500/31 - Crystal 6" Ram's Head Candlesticks, Etched Valencia, Gold Encrusted (Pair)
252	_____	#1236 - Amethyst 8" Keyhole Ivy Ball, Crystal Stem & Foot
253	_____	#1040 - Light Emerald 3" Swan, Type II, Signed
254	_____	#3500/57 - Crown Tuscan 8" 3-Compt. Candy Box & Cover, Charleton Gardenia Décor, (gold worn)
255	_____	#3500 - Crystal 1 oz. Cordial, Cut Croesus
256	_____	#1125 - Jade 15-1/2" Buffalo Hunt Scene Bowl
257	_____	#509 - Light Emerald 2-Kid Figure Flower Holder, Signed PAT NO. 1645577, (straw Marks), & #676 - Light Emerald 11-1/2" Bowl, Rolled Edge, Signed, (some scratches)
258	_____	#3121 - Crystal 10 oz. Goblets, Etched Wildflower (6)
259	_____	#1228 - Ebony 9" Oval Pillow Vase, Etched Apple Blossom
260	_____	#39 - Forest Green Mount Vernon 10" Bowl, (minor scratch)
261	_____	#1312 - Crystal Footed Cigarette Box & Cover, Cut Belfast
262	_____	#1348 - Royal Blue 11" Bowl, & #3500/108 - Royal Blue 2-1/2" Candlesticks (Pair), (Set)
263	_____	#1201 - 2-1/2 oz. Georgian Tumblers (Light Emerald, Gold Krystol, Peach-Blo, Royal Blue, Carmen, Forest Green, (6 Total), All Signed
264	_____	#3011/25 - Crystal Statuesque Ivy Ball, Optic Bowl, Crystal Stem & Foot
265	_____	#3797/54 - Cambridge Square 6" Comport
266	_____	#3130 - Willow Blue 6 oz. Tall Sherbets (7)
267	_____	#3500/21 - Crystal 12" Oval 2-Hld. Bowl, Etched Elaine
268	_____	#198 - Mulberry Perfumes, Complete Dauber Stoppers (2)
269	_____	Crystal 3-1/2" Coaster, Etched Chantilly, Sterling Silver Base (Pair)
270	_____	#3085 - Peach-Blo 12 oz. Ftd. Tumblers, Etched Cleo, Gold Edge, (2)
271	_____	#94 - Ebony 7" x 8-1/4" Sweet Pea Vase, Unknown Gold Etching
272	_____	#3400/141 - Crystal 80 oz. Jug, Etched Wildflower, (scratched)
273	_____	#6004 - Crown Tuscan 8-1/2" Vase, Etched Rosepoint, Gold Encrusted
274	_____	#135 - Helio 12" Cheese & Cracker
275	_____	#3725 - Crystal 7 oz. Tall Sherbets, Cut Bijou (4)
276	_____	#3400 - Milk Glass 76 oz. Pitcher, 6 Tumblers, Brass Farber Holders, (Set)
277	_____	#1402/52 - Amethyst Tally Ho Ice Pail w/Tongs
278	_____	#3400/71 - Light Emerald 3" 4-Toed Nut Dish
279	_____	#1040 - Crown Tuscan 3" Swan, Type III, Charleton Gardenia Décor
280	_____	#156/69 - Crystal Martha Oyster Plate & Sauce Cup
281	_____	#1 - Moonlight Blue Everglade 10" Bowl & #3 - 2 Holder Candelabrum (Pair), (Set)
282	_____	#511 Version 2- Crystal Tombstone Book Ends (Pair), Flat Sides Frosted & Engraved RWN (From Estate of Ruth Neal, 1950s Hollywood Actress?)
283	_____	#3400/646 - Gold Krystol 5" Keyhole Candlesticks, Etched Apple Blossom, (Pair)
284	_____	#1043 - Crystal 8-1/2" Swan, Charleton Rose Decor
285	_____	Original Cambridge Glass Co. 1949 Catalog w/ Price List
286	_____	#3778 - Crystal 7 oz. Tall Sherbets, Cut Early Ambassador (Lovebirds), (6)
287	_____	#533 - Light Emerald Round 2-Pc. Mayonnaise Set, Etched #725
288	_____	#3121 - Crystal 3-1/2 oz. Wines, Etched Rose Point (4)
289	_____	#163 - Forest Green Martha 8-1/2" Asparagus Plate
290	_____	#3900/72 - Crystal 6" 2-Lite Candlesticks, Etched Rose Point (Pair)
291	_____	#1070 - Amethyst 36 oz. Pinch Decanter, Crystal Golf Ball Stopper
292	_____	#2651 - Crystal Near Cut Feather Oil & Stopper, Signed Near Cut
293	_____	Ebony Trumpet Boudoir Lamp, Gold Encrusted D185 Dancing Girls, (some gold wear)
294	_____	#3400/647 - Crystal 6" 2-Lite Keyhole Candlesticks, Etched Gloria (Pair)
295	_____	#957 - Amber Ice Pail, Signed
296	_____	#427 - Crystal Pristine 10" Salad Bowl, Sterling Rim, Etched Elaine, (small dents in rim)

297	_____	#3450 - Forest Green 84 oz. Nautilus Jug, Crystal Handle
298	_____	2729/425(3) - Crystal Near Cut 6-1/4" Square Vase, 2-3/4" Square, (small flake bottom corner)
299	_____	#3500 - Crystal 1 oz. Cordial, Etched Minerva
300	_____	#3400/647 - Crown Tuscan 6" 2-Lite Keyhole Candlestick, Etched Candlelight, Gold Encrusted, (gold worn)
301	_____	#1917/88 - Bluebell 1 lb. Candy Jar & Cover, Floral Cutting
302	_____	#500/122 - Amber Basketweave 56 oz. Tall Jug & Cover
303	_____	#29 - Ivory 12" Flat Rim Bowl, Sterling Silver Overlay Cameo Pattern (minor rim wear)
304	_____	#569 - Carmen Pristine 10" Crimped Bowl or Vase
305	_____	#2760 - Crystal Near Cut Daisy 11" Celery Tray
306	_____	#3400/67 - Crystal 12" 5-Part Celery & Relish, Etched Elaine
307	_____	#3500/37 - Crystal 7" Tall Comport, Etched Valencia, Gold Stippled
308	_____	#3450 - Amethyst 84 oz. Nautilus Jug w/ Ice Lip, & Matching 12 oz. Tumblers (3), (Set)
309	_____	#1114 - Dianthus Pink 6" Bashful Charlotte Figure Flower Holder, & #676 - 11-1/2" Bowl, Rolled Edge, Etched #703, (edge chip)
310	_____	#3011 - Carmen Statuesque 7" Cupped Comport, Crystal Stem & Foot
311	_____	#3400 - Crystal 2-1/2 oz. Ftd. Tumbler, Ebony Foot, Etched #741 Part 3
312	_____	#1157 - Peach-Blo Satin (Rose D6 Barry) 5" Everglade 3-Toed Nappy, Signed
313	_____	#3776 - Crystal 9 oz. Goblets, Cut Maryland (6)
314	_____	SS47 - Windsor Blue Sea Shell 9-1/2" Cornucopia Vase
315	_____	#3400/638 - Moonlight Blue 6-1/2" 3-Lite Candlesticks, Silver Overlay Fruit Decor on Bottom and Candlecup (Pair)
316	_____	#2760 - Crystal Near Cut Daisy Ftd. Oval Banana Split or Jelly
317	_____	#7966 - Crystal Low Cocktails, Cut Rondo (5)
318	_____	#1040 - Amber 3" Swan, Style II, Signed
319	_____	#1330 - Amethyst 5" Sweet Potato Vase, (scratched)
320	_____	#419 - Crystal Pristine 12" 6-Part Relish
321	_____	W111 - Milk Glass Seashell 4-1/2" Bon Bon, 4-Ftd., Charleton Roses Décor, (gold wear on rim)
322	_____	#9 - Royal Blue Mount Vernon 8" 1 lb. Candy Urn & Cover, (minor roughness inside bottom rim)
323	_____	#170 - Crystal 9 oz. Syrup w/Metal Top, Etched Marjorie, (small crack in handle)
324	_____	#1595 - Blue-2, 9" Candlesticks (Pair), & 10-1/2" 9-panel Ftd Bowl (Set)
325	_____	#851 - Blue-2 Decagon Ice Pail, Signed
326	_____	#575 - Crystal Pristine 9" Cornucopia Vase, Sand Blasted Multi-color Franz Grosz Floral Décor
327	_____	#389 - Light Emerald 13" 2-Pc. Relish Set, (scratched on bottom, bruise base of sauce cup)
328	_____	#3400/647 - Crown Tuscan 6" 2-Lite Keyhole Candlesticks (Pair)
329	_____	#3500/26 - Crystal 12" Rams Head Fruit Basket, Etched Elaine
330	_____	#3400/68 Royal Blue Cream & Sugar, Signed, (Set)
331	_____	#3400/202 - Crystal 6-1/2" 4-Ftd. Bonbon, Oblong Crimped, Etched Portia
332	_____	#1371 - Amber Bridge Hound, Part Cambridge Label
333	_____	#25 - Amber Centennial 10-1/2" Flared Bowl, Gold Encrusted Willow Border, Signed
334	_____	#1271 - Ivory 6-1/4" Candlesticks (Pair), (hole under base)
335	_____	#1636 - Crystal 4-1/2" Peg Blue-jay For Cambridge Arms
336	_____	#1043 - Crown Tuscan 8-1/2" Swan, Style 1, Signed
337	_____	#1349 - Crystal 12" 4-Toed Crimped Bowl, Etched Marjorie, Signed
338	_____	#797 - Light Emerald 8" Flip Vase, Etched Martha
339	_____	#2351 - Near Cut 10" Punch Bowl, Base & Handled Custards (8), (Set)
340	_____	A56 - Crystal Today 10 oz. Goblets (4)
341	_____	#1202 - Heatherbloom 12 oz. Georgian Tumblers (3)
342	_____	#3120 - Gold Krystol 1 oz. Cordial
343	_____	Jade 24" Lamp, Original Fittings, No Wiring
344	_____	#1115 - Crystal 11" Bashful Charlotte Figure Flower Holder, Signed PAT PND 1645577
345	_____	SS2 - Crown Tuscan Seashell 7" Salad Plates (2), 1 Charleton Roses & 1 Charleton Gardenia Décor
346	_____	#3400/38 - Amethyst 80 oz. Ball Jug, Satin Inside, (scratches)
347	_____	#3797/78 - Ebon 9-1/2" Vase
348	_____	Cambridge Door Knobs, Original Fittings
349	_____	Royal Blue Top Hat Cigarette Holder
350	_____	#56 - Azurite 9-1/4" Ftd. Comport
351	_____	#1040 - Carmen 3" Swan, Style II, Signed
352	_____	#1402/100 - Crystal Cocktails (2)
353	_____	#3400/10 - Light Emerald 11" Keyhole Hdl. Sandwich Tray, Etched Portia
354	_____	#1402/52 - Carmen Tally Ho Ice Pail, Farber Holder
355	_____	#3750 - Crystal 10 oz. Goblet, Cut Harvest (4)

- 356 _____ #1563 - Cambridge Arms: 4-Candle Arm (2), and #628 Base (chips under peg), (Set)
- 357 _____ #1137 - Crystal 5-1/2" Blue Jay Figure Flower Holder
- 358 _____ #2760 - Crystal Nearcut Archfoot Daisy Basket
- 359 _____ #1236 - Gold Krystol Keyhole 8" Ivy Ball, Amber Stem & Foot
- 360 _____ #141 - Chelsea 6-1/2" Candy Bowl & Cover, Gold Decoration
- 361 _____ #56 - Moonlight Blue 13" Everglade 3-Toed Sandwich Plate (tiny edge rough)
- 362 _____ #3400/6 - Light Emerald 11-1/2" Cheese & Cracker Plate Only, Etched Apple Blossom, Gold Edge, Signed
- 363 _____ #3400/32 - Crystal 12-1/2" Bowl, Flared, Etched Portia, Signed
- 364 _____ #102 - Light Emerald Stratford Oval Ftd. & Hld. Individual Salt, Signed
- 365 _____ #1532 - Crystal 3-Pc. Blown Mayonnaise Set (Bowl, Plate, Ladle), Etched Diane
- 366 _____ #1612 Dolphin Candelabrum w/ #1617 - Hurricane Lamp, Etched Wildflower (Pair), (small chip on one lamp, large chip & crack on other)
- 367 _____ #24 - Royal Blue Mount Vernon Individual Salt Dip
- 368 _____ #215 - Crystal Martha 12" 5-Part Celery & Relish, Etched Chantilly
- 369 _____ SS46 - Windsor Blue Sea Shell 7-1/2" Shell Flower Holder
- 370 _____ #3400/200 - Crystal 11" 3-Part Celery & Relish, Etched Rose Point
- 371 _____ #3143/30 - Crystal 5" Ftd. Ivy Ball, Gyro Optic
- 372 _____ #1138 - Crystal 8-1/2" Sea-gull Figure Flower Holder
- 373 _____ #3400/851 - Amethyst Ice Pail w/Tongs, Signed
- 374 _____ #494 - Amber Cups & Saucers (8), &
 #668 - Amber 6" Bread & Butter Plates (6), &
 #138 - Amber Cream & Sugar, Signed, Sugar has base nicks) &
 #931 - Amber 5-1/2" Individual Cake Tray, Signed, Set
- 375 _____ #278 - Crystal 11" Ftd. Vase, Unidentified Cutting
- 376 _____ #70 - Azurite 8" Candlesticks, Gold Décor (Pair)
- 377 _____ Forest Green Barrel Cigarette Holder, Crystal Twist Stem & Foot
- 378 _____ #1402/95 - Crystal 4-pc. Twin Salad Dressing Set (Bowl, Underplate, 2 ladles), Etched Diane, (Set)
- 379 _____ #36 - Willow Blue Everglade 12" Oval Bowl, Tulip Design
- 380 _____ #3400/2 - Gold Krystol 12-1/2" Flip Bowl, Etched Apple Blossom
- 381 _____ #3400/71 - Carmen 3" 4-Toed Nut Dish, Signed
- 382 _____ #3400/67 - Light Emerald 12" 5 Part Celery & Relish, Etched Gloria
- 383 _____ #103 - Crystal 38 oz. Guest Room Jug & Tumbler, Unidentified Cutting, (scratched, stained, handle crack)
- 384 _____ #676 - Peach-Blo 11-1/2" Flip Bowl, Etched #520, Signed
- 385 _____ #306 - Crystal Pristine 6" Candy Box & Cover, Etched Rosepoint, Cut Knob
- 386 _____ Mulberry Tall Comport, Etched #708, Gold Encrusted (wear to gold)
- 387 _____ W123 - Milkglass 3" Mini Cornucopia
- 388 _____ #611 - Amethyst 8 oz. Beer Mug
- 389 _____ #499 - Crystal 7-1/2" Virginian Candlestick, (prism as is)
- 390 _____ #496 - 12 oz. Tall Joes (Forest Green, Mocha, Pistachio, Amethyst, Moonlight Blue, Gold Krystol, Pink, Tahoe Blue) (8 Total) (Set)
- 391 _____ #1236 - Amber Keyhole 8" Ivy Balls (Pair)
- 392 _____ 3400/48 - Crystal 13" 4-Ftd Bowl, Etched Roselyn
- 393 _____ #3400 - Amethyst 22 oz. Jug, Farber Chrome Holder
- 394 _____ Cambridge Factory Paperweight, (scratches on top)
- 395 _____ #1 - Carmen 4-1/2" Muddlers (2)
- 396 _____ #3121 - Crystal Low Sherbets, Etched Portia, (5)
- 397 _____ #499 - Crystal Pristine Cala Lily Candlesticks (Pair)
- 398 _____ #1371 - Amethyst Bridge Hound, Partial Cambridge label
- 399 _____ P166 - Crystal Pristine 13-1/2" Cabaret Plate, Rolled Edge, Etched Daffodil (light scratches)
- 400 _____ #3400/146 - Amethyst 4" Ashtray w/Crystal Center Handle
- 401 _____ #3797/17 - Cambridge Square Cups & Saucers (6 Sets)
- 402 _____ #3130 - Crystal 1 oz. Cordial, Cut Ravenna
- 403 _____ #3400/851 - Carmen Ice Pail w/Tongs
- 404 _____ #121 - Azurite Small Basket
- 405 _____ #3121/1 - Crystal 5-3/8" Tall Comport, Etched Wildflower, Gold Edge
- 406 _____ #2699/415 - Green Carnival 8 oz. Near Cut Buzz Saw Table Tumbler
- 407 _____ #1040 - Mandarin Gold 3" Swan, Style III
- 408 _____ Jade 8-1/2" Twist Candlesticks (Pair)
- 409 _____ #1019 - Crystal Wafer Tray, Unknown Floral Cut
- 410 _____ #3400/647 - Ebony Keyhole 2-Lite Candlesticks, Decagon Base (Pair)



The National Cambridge Collectors
P.O. Box 416 ~ Cambridge, Ohio 43725

October 31, 2010

To: Members of the Board of Directors

From: Mike Strebler, Treasurer *Mike*

Re: Treasurer's Financial Report for period ending October 31, 2010

This is the third financial report for 2010. Actual results are included through October 31, 2010. As always, results are projected through December 31, 2010 and compared to budget. I am projecting we will come out ahead of budget for the year. The 2010 budget is for a cash increase of \$9,587. The way things look now, I project the 2010 increase to be \$26,569. This is a great single year result for our organization. There are eight variance items that will produce more cash than budgeted; and two items that will produce less.

The Annual Fund is the highest amount in the five years since it was introduced. The Annual Fund has received \$50,679 already. I am projecting the yearend amount to be \$50,949 which will exceed our budget amount of \$40,000 by \$10,949. The most significant factor in the success of the 2010 Annual Fund is a retention factor of 90%. That means 9 out of 10 members that made gifts to the Annual Fund in 2009, also made gifts in 2010. Recently included in the total is a \$2,000 gift from Patricia Rutledge. This amount was in addition to her previous Japonica level gift. Also, Fleur De Lys Healy made a \$1,000 tribute gift. Finally, the Board of Directors have collectively given \$5,700 to the Annual Fund in 2010. This represents 11.2% of the total. The total number of households participating is 536 thus far with 46 new members and 60 non-renewals from 2009.

Another positive financial result associated with the Annual Fund is the process for the distribution of the Annual Fund materials. The Filipinis volunteered to stuff and mail the materials resulting in over a thousand dollars in savings.

Another good result is the Glass Show producing \$1,439 more than budget. The Benefit Auction was budgeted to produce \$6,000 but only came in at \$5,669. I don't feel this is a significant financial variance. However, the budget amount reflects the continuation of a deterioration which has been taking place in recent years. This event was budgeted lower than prior years, but finished even lower than that amount. The Dash and the Convention Auction also finished below budget. I have had concerns about our events softening. However, for 2010 all our events are completed and we finished \$758 better than our budget of \$13,500.

The two items producing less cash are gifts, and publication inventory purchases. The inventory purchase variance is due to our purchase of the color books. The gifts were budgeted at \$4,500 but only forecasted to produce \$1,600; a cash reduction variance of \$2,900. This is in contrast to 2009 when we received in excess of \$16,000 in gifts.

At October 31, 2010 we have \$174,125 in cash and investments. Except for a small amount of stock we hold, the balance is in money markets including \$100,007 specifically set aside for the endowment fund. The money markets provide safety for the principal but are producing no income.

Looking into the future, if we assume we can produce the same results year after year into the future, this is not sufficient to permanently endow the organization and guarantee our museum operation into perpetuity. Our current financial condition is stable/good. However, our long-term position needs strengthened. We must continue to seek new sources of revenue and re-engineer our existing sources.

I project our unrestricted cash balance to be approximately \$61,000 at December 31, 2010. If we achieve this, I propose we plan to transfer \$30,000 to our endowment at year end.

This concludes my report for the period January 1, 2010 through October 31, 2010. Have fun collecting Cambridge Glass.

The 2010 Annual Fund and Listing of Benefactors

By Mike Strebler

The 2010 Annual Fund has been the most successful ever. A record breaking \$50,984. NCC is like most other non-profit organizations that rely on the generosity of its membership. Each of us makes choices when we prioritize our charitable giving whether it be church, alma mater, or other organization we feel passionate about. NCC is very fortunate to have been included in so many charitable giving plans during the past year.

Since NCC exists through member giving, we use an Annual Fund system to raise funds and keep track of the gifts we receive. All unrestricted gifts to NCC are included in the Annual Fund using calendar year counting. If there is more than one gift in a year, the gifts are aggregated when recognizing the member. NCC also receives gifts for specific purposes that can only be used for the purpose indicated. These restricted gifts are recognized separately and not included in the Annual Fund.

The annual fund uses a common “renewal” date. NCC sends out Annual Fund materials to everyone once a year. There are no monthly reminders or renewal dates. The mailing takes place between March 15 and April 1 each year and includes the balloting process for board elections. This year we did one “remember us” letter in the fall which kept us in touch with some busy Friends.

The Annual Fund enables us to operate the museum, publish the Crystal Ball, and carry out our mission activities of education and preservation. Most other activities are self-supporting such as convention, auction, and quarterly meetings. As noted in the opening, the 2010 Annual Fund has had wonderful results. The last analysis of the 2010 Annual Fund results was inclusive through December 11, 2010. As of that date, the Friends of Cambridge had given \$50,984 since the beginning of the year. That should be close to the final amount except for any new households or tribute gifts.

If you are reading this article there is a high probability you are a Friend of Cambridge who generously supported NCC through the 2010 Annual Fund. And there is a high probability you supported NCC in most every year since you found the rest of the Friends, and joined in with this great group of people. There are new Friends each year, and we don't hear from some, but the majority of the supporters of the Annual Fund are there year-in and year-out. Our renewal rate from 2009 to 2010 was 89%. This is a fabulous participation rate for an arts organization like ours. The Friends of Cambridge are a loyal group.

The Annual Fund is managed on a household basis. This is because most households have more than one member but make their philanthropic decisions together. Additionally, each household receives a single Crystal Ball. There are 538 households who are participants this year. A tabulation of all results as of December 11 is included below:

	2010	
	#	Amount
President's Circle	10	\$ 12,250
Japonica	8	4,000
Mardi Gras	37	7,500
Century	128	12,950
Benefactors	183	36,700
Patrons	355	12,949
Active households	538	49,649
Special tributes	5	1,335
	543	\$ 50,984

The Annual Fund recognizes member philanthropy using gift recognition levels. The majority of households (355) participated at the Patron level. The Benefactor levels (183) are amazingly consistent with 96% of last year's benefactor contributors renewing this year. Every year's Annual Fund has been a great tribute to the Friends of Cambridge in their support of Cambridge Glass and its history.

The 2010 Annual Fund has enabled us to continue our strategic plan of infusing of operating funds into the endowment. At the end of the year we will transfer approximately \$35,000 to bring our endowment fund to \$135,000. While the endowment is still in its infancy, it is a wonderful accomplishment.

The 2010 Annual Fund was the fifth year since its inception. The total raised during those five Annual Fund drives is \$218,872. A stunning accomplishment. We own our museum, support facility, and contents free and clear. Our newsletter, the Crystal Ball, is being published at a high quality level. And finally, we have started down the road to accomplishing our long-term goals by doubling the endowment since the inception of the Annual Fund. We have done well. In my opinion, the most important thing we have accomplished is bringing together nice people who enjoy Cambridge Glass. At some point in my life, my Cambridge Friends became most of my primary friendships.

NCC is a collective of glass friends who enjoy and appreciate the artistry of glass produced by the Cambridge Glass Company. We, collectively, are the only group of individuals dedicated to Cambridge Glass. As such, we are proud to recognize all Friends of Cambridge who contributed at the Patron level during 2010 and those Friends included in the listing of Benefactors which follows. The listing is as of December 10, 2010 and reflects the names included in the membership database. Please email or write to the main NCC address for any errors or omissions.

If you haven't participated in the 2010 Annual Fund yet, it's not too late. The Annual Fund is also a nice way to remember former Friends by making tribute gifts in their honor. All gifts to NCC qualify for deduction from income taxes. Congratulations to all of us for the success of the 2010 Annual Fund.

The 2010 Annual Fund and Listing of Benefactors

Doris Durham	Alabama	Century	Les Hansen	Minnesota	Presidents Circle
Robert and Janice Kastner	Arizona	Mardi Gras	Elizabeth Moe	Minnesota	Century
Clyde Coleman	Arkansas	Japonica	Elaine Storck	Minnesota	Century
Joann Coleman and Brian Reddick	Arkansas	Mardi Gras	Brad Allen and Gene Cooper	Missouri	Century
Norma Oliver	Arkansas	Century	Jim and Nancy Finley	Missouri	Presidents Circle
Dan and Leta Heincy	California	Century	Ralph and Kathy Litten	Missouri	Century
Lois James	California	Century	John and Peggy Scott	Missouri	Century
Ann Mang	California	Century	Ruth Smith	Missouri	Century
John Maves	California	Century	Lyndon and Susie Tummons	Missouri	Century
Janice and James Miller	California	Century	Richard Rietz	Montana	Century
Dale and Barbara Moody	California	Century	Nyla and Bruce Stanton	Nebraska	Century
Bonnie and Bob Quaintance	California	Century	David and Linda Adams	Nevada	Mardi Gras
R. Scott and Lynne Ellen Sanders	California	Century	Penny and Elliot Drucker	Nevada	Century
Wendy Steelhammer	California	Century	Ken and Jane Filippini	New Jersey	Presidents Circle
Betty and Herbert Wanser	California	Century	Sharon and Ronald Hermone	New Jersey	Mardi Gras
Doug Ingraham and Randall Johnson	Colorado	Presidents Circle	Walter and June Lee	New Jersey	Century
Rick and Cindy Jones	Colorado	Mardi Gras	Roger and Mildred Loucks	New Jersey	Mardi Gras
Sandy Mazarakis	Colorado	Century	Michael, Barbara, and Mary Colella	New York	Century
Shelby and Kathy Nussbaum	Connecticut	Mardi Gras	Clyde Ingersoll	New York	Century
James Braue	Florida	Century	Donna Kleintjes	New York	Mardi Gras
Dr. Carter Glass	Florida	Mardi Gras	Gloria and Michael Morris	New York	Century
William and Betty Glass	Florida	Mardi Gras	Christine Nagy	New York	Century
Fleur De Lys Healy	Florida	Century	Barbara Ritchin	New York	Century
Darylena Keene	Florida	Century	James Jr. and Rita Van Skiver	New York	Century
David and Kathy Lake	Florida	Mardi Gras	Bob and Marcia Ellis	North Carolina	Mardi Gras
Ruth Lee	Florida	Century	Beth Porritt and David Poore	North Carolina	Century
Lynda and William Randolph	Florida	Century	Wayland and Judy Ramage	North Carolina	Century
Barbara Stewart	Florida	Century	Bev and Will Acord	Ohio	Century
Luene B. Torner	Florida	Century	Joe Andrejak	Ohio	Century
Madison Walker	Florida	Mardi Gras	Mike and Cindy Arent	Ohio	Japonica
Don and Lauri Carpenter	Illinois	Century	Nelda and Carl Baker	Ohio	Century
James and Rose Curnutt	Illinois	Century	Rich and Sally Bennett	Ohio	Mardi Gras
Earl and Mary Forbes	Illinois	Century	Carl and Shirley Beynon	Ohio	Mardi Gras
Jeffrey and Janice Larson	Illinois	Mardi Gras	Boneva and Ed Blankenship	Ohio	Century
Shirley and Ernie Launer	Illinois	Century	Dale and Joan Bond	Ohio	Century
Toby Mack and Marti DeGraaf	Illinois	Century	Margaret Bowman	Ohio	Century
Bob and Diane Coward	Indiana	Century	Joan and Scott Brown	Ohio	Century
Marjorie Farlow	Indiana	Century	Sue Ellen and James Brown	Ohio	Century
Elizabeth Sarchet	Indiana	Century	Wilmer and Phyllis Bryan	Ohio	Mardi Gras
Lindy Thaxton	Indiana	Presidents Circle	Julie Buffenbarger	Ohio	Japonica
Martha and Lynn Swearingen	Iowa	Century	Sandra and Jim Buffenbarger	Ohio	Mardi Gras
Linda Parmenter and Linda Bredengerd	Kansas	Century	William and Janet Carlson	Ohio	Century
Perry Hogue	Kentucky	Century	Sarah Carpenter	Ohio	Century
Janet and Stephen Bemiss	Maryland	Century	David, Aloma, and Brigitte Chorey	Ohio	Century
Felicia and David Helm	Maryland	Century	Danny Cornelius and Donald Jones	Ohio	Century
Bonnie and Dwayne Lippy	Maryland	Mardi Gras	Vester and Mary Jo Dupree	Ohio	Presidents Circle
Annemarie and Edward DuBois	Massachusetts	Century	Larry and Susan Everett	Ohio	Japonica
Bill and Cynthia Alexander	Michigan	Century	Carmella Frantz	Ohio	Century
Rodney Allen and Paula MacKenzie	Michigan	Century	Diane Gary	Ohio	Mardi Gras
Brent and Hedi Berry	Michigan	Mardi Gras	James and Patricia Gates	Ohio	Century
Robert and Karen Gallagher	Michigan	Century	Nancy Guegold	Ohio	Century
Phyllis Hayes	Michigan	Century	Carol and Jim Hayhurst	Ohio	Century
Daniel Kuczewski	Michigan	Century	Mary and Stanley Holmquist	Ohio	Century
Gerald and Cheryl Kuczewski	Michigan	Century	Ron and Norma Hufford	Ohio	Century
Jane and Wayne Repko	Michigan	Century	Larry and Janice Hughes	Ohio	Century
Don Russell	Michigan	Mardi Gras	Dorothy Kell	Ohio	Century
David Slade	Michigan	Century	Karla Kiiikka	Ohio	Century
Ellen Teller	Michigan	Century	Oscar and Laura Kniceley	Ohio	Century
			John and Patricia Lanning	Ohio	Century
			Jim and Janice Laver	Ohio	Century
			Bill and Patricia Loader	Ohio	Century
			Bill and Joanne Lyle	Ohio	Century
			Rose MacConkey	Ohio	Century
			Joy McFadden and Mary Beth Hackett	Ohio	Mardi Gras

The 2010 Annual Fund and Listing of Benefactors

Sharon and Joe Miller	Ohio	Japonica
Nancy Misel	Ohio	Mardi Gras
Janet Lee Mitchell	Ohio	Mardi Gras
Jane and Paul Morton	Ohio	Mardi Gras
John and Carol, and John Murrell	Ohio	Century
Hilda and Ronald Pfouts	Ohio	Century
David Ray	Ohio	Mardi Gras
Ken and Judy Rhoads	Ohio	Mardi Gras
Squeek and Dorothy Rieker	Ohio	Century
Linda and Bryan Roberts	Ohio	Century
David and Lavonne Roscoe	Ohio	Century
Patricia Rutledge	Ohio	Presidents Circle
Arthur Shepard	Ohio	Mardi Gras
Miriam and August Simmons	Ohio	Century
Sally Slattery	Ohio	Century
Suzane Smith	Ohio	Century
Lyle and Linda Stemen	Ohio	Japonica
Mike and Lisa Strebler	Ohio	Presidents Circle
Jack and Elaine Thompson	Ohio	Century
Melissa, Karen and Max Treier	Ohio	Mardi Gras
Rosalyn and David Velazco	Ohio	Century
Julia Wall	Ohio	Century
Lorraine and Mark Weinman	Ohio	Century
Lynn Welker	Ohio	Century
Frank and Vickie Wollenhaupt	Ohio	Mardi Gras
Barbara Wyrick	Ohio	Mardi Gras
Mark Thompson	Oklahoma	Century
Joyce and W.T. Dawson	Oregon	Century
Beverly and Ed Groshens	Oregon	Century
Bob and Karen Arnold	Pennsylvania	Mardi Gras
Brad and Denise Bernstein	Pennsylvania	Mardi Gras
Ruth and Pearley Cunningham	Pennsylvania	Century
Karen Friedly	Pennsylvania	Century
Patricia and Robert Harrison	Pennsylvania	Century
Richard and Leslie Taylor	Pennsylvania	Century
John Walter Jr.	Pennsylvania	Century
Loretta Weeks	Pennsylvania	Century
Helen and Steve Klemko	South Carolina	Presidents Circle
Douglas and Linda Warren	South Carolina	Mardi Gras
Edwin and Rosa Nixon	Tennessee	Century
Suzanne Wagar	Tennessee	Century
Sandra and William Bridwell-Walker	Texas	Century
Sue and Bob Cameron	Texas	Century
Louise Carson	Texas	Century
Robert and Margaret Downing	Texas	Presidents Circle
John and Lisa Lacy	Texas	Japonica
Max Miller	Texas	Century
Freeman and Jeannie Moore	Texas	Japonica
Mary Pfanestiel	Texas	Century
Dorothy Butler Truitt	Texas	Century
Shelley Cole and Alex Citron	Virginia	Century
Tarzan Deel	Virginia	Mardi Gras
Ann Wharton	Virginia	Century
Patricia Christiansen	Washington	Century
Robin and Timothy Cook	Washington	Century
Swede and Kay Larsson	Washington	Century
Charles McKinney	Washington	Century
Greg Vass	Washington DC	Mardi Gras
Sue Mitchell	West Virginia	Century
George and Jo Foglesong	Wisconsin	Century
Michael Lee	Wisconsin	Century

National Cambridge Collectors, Inc. August 2010 Quarterly Meeting

President David Ray called the August 2010 Quarterly Meeting of the National Cambridge Collectors, Inc. to order on Saturday August 21, 2010 at 12:55 pm. The meeting was held at the mould Storage Building, Cambridge, OH.

Treasurer's Report – Mike Strebler reported the Annual Fund has received \$46,369 already, and is projecting the year end amount to be \$47,150 which will exceed the budgeted amount of \$40,000 by \$7,150. Another good result is the Glass Show producing \$1,289 more than budget. The Benefit Auction was budgeted to produce \$6,000 but only came in at \$5,669. Our current financial condition is stable. However, our long-term position needs to be strengthened. We must continue to seek new sources of revenue and re-engineer our existing sources.

Committee reports:

Acquisition – Lynn Welker reported that a rare Caprice compote has been acquired. Other gifts have been received which will be sold in the gift shop.

Auction – Jack and Elaine Thompson reported that several nice lists have already been received. Auction lists are due by September 30. Auction setup and listing is being worked.

Convention – Julie Buffenbarger and Nancy Finley are co-hosts for 2011, with a theme of "Under the Sea." We should expect presentations on the shell line and coral, along with exploring new ideas.

Endowment – Larry Everett will have an article in the Crystal Ball with suggested text for incorporation into estate planning documents.

Facilities – Carl Beynon reported the roof needs some work, but it is under warranty.

Glass Dash – Larry Everett reported the 2011 Glass Dash will be held at St. Benedict's.

Glass Show & Sale – David Ray mentioned the need to recruit new quality dealers for the 2011 Glass Show. Expect more information in the Crystal Ball.

Museum – Cindy Arent reported tours start November 3. The museum has been busy all summer. The Dicken's Christmas parade will be held on Sunday, November 28, at 6:00 pm.

Programs – David Ray mentioned the November meeting will be held on Saturday November 6 at the Cambridge Country Club. The topic will be the re-open period of Cambridge. Let Lynn Welker know if you are bringing glass. Look for registration information in the Crystal Ball. The Glass Swap will be at the Museum at 2pm.

New Business:

Sharon Miller provided information on the Standards project, a mission statement and vision statement was adopted by the board.

Upon hearing no further old or new business, Cindy Arent moved to adjourn (second by Susan Everett). Passed.

Respectfully submitted, Larry Everett / Freeman Moore

My Roundabout to Collecting Cambridge Glass and Joining a Glass Club

By Hank Czerwick

How I came to have any glass at all, or become involved with the Michigan Depression Glass Society, is as follows: One day many years ago, about the time my daughter Jennifer was about to graduate from high school, my wife Marlene happened to be wandering around in an antique store. For some reason she was attracted to eight stemmed water glasses. The store had them identified as being by Fostoria.

Marlene mentioned seeing them to me and we discussed the possibility of purchasing the glass as a graduation present for Jennifer. The purchase was made and the stems were a hit as a gift. Little did we know that subsequent research would show that these were not Fostoria stems. As it turned out, they were Cambridge Chantilly!

Interest in these stems led Jennifer to the Michigan Depression Glass Society annual glass show the first weekend each November, in Dearborn, Michigan. This provided her with a source of information and an opportunity to purchase other pieces of Chantilly. It was at this show she learned about the club's monthly meetings, met some of the members and decided to join.

She was impressed with the educational content of the monthly meetings and especially impressed with its friendly and helpful members. Jennifer would come home with stories about the "well-oiled" operation of the meetings and this club, and the willingness of individuals to do their part to keep things running. Being a member of several other hobby groups, where everyone wants to be a member, but no one wants any responsibilities, I found this to be curious and refreshing.

As the days got shorter and darkness came sooner, I became concerned about her attending the meetings and having to travel to and fro in the dark. I decided to go with her! That was many years ago!

As of this writing, I have been an officer in the Michigan Depression Glass Society for several years and very involved in its activities from the

start. Jennifer now has several china cabinets full of Chantilly, many pieces with the Wallace sterling silver trim, as well as a set of the hard to find dinner plates. My collection includes Cambridge Caprice, which I won as a prize at one of our meetings, and Cambridge Cleo in amber, which adds a little color to my shelves.

The best part of collecting glass, besides the beauty and variety of the glass itself, has been my association with the Michigan Depression Glass Society and other glass collectors. Unlike other hobbies where suspicion is long and trust is short, a glass collector's word is their bond, their checks are as good as gold, and their smiles and handshakes sincere. I'm proud to be a glass collector!



Glass collector, Henry Czerwick, is pictured with a few pieces of Cambridge Caprice, a collection started after he won a luncheon set from the Michigan Depression Glass Society, as well as a few pieces of Cleo in Amber that he purchased from a fellow club member.

Study Group Reports

Study Group #17

The Columbus Wildflowers

On Thursday, October 7, 2010, the Wildflowers met at the home of David Ray at 7:00 pm. We had chosen the topic of "Vases" for this month's meeting, and since it was such a huge, encompassing topic, we began our meeting with Show and Tell (which was displayed on a much smaller table than our program glass).

Wonderful Show and Tell items included: an Azurite open handled Comport from the Chelsea line; a Muddler Comport with Adonis cutting; a pink Tumbler with the Golf Scene etch, (and we compared it to larger Golf Scene item which had the Country Club in the etching - and this one did not); a Melon Boy in Light Emerald; a 3-lite Keyhole Candlestick with cut Candlelight; a round Covered Candy in Pink with Green Rose Finial; and an Ebony Bookend etched Cleo.

We then had a short business meeting and talked a bit about ways to encourage others to collect glass, with things like including a brief brochure with some history and facts each time we sell a piece of glass.

Next, we got right into our program on "Vases." David had set up his large dining room table with a huge number of varying sizes and shapes of vases, and the Wildflowers all added to that. David had a wonderful handout and had actually gone through the Cambridge catalogues to count the number of different shapes of vases which could be purchased in each one. The results were extremely interesting: in the 1903 catalogue-13 vases; 1927 to 29-26; the Green Welker-124; 1930 to 34-106; 1940-160; 1949-37 and 1958-24. And, these numbers did not reflect the various colors, etchings or decorations on each shape. So, because the topic was so broad and wide, our focus was on the volume of vases produced.

David was not familiar with vases being produced in Carrara, Topaz, Mulberry, Cobalt 1, Bluebell, LaRosa, early Pistachio or Mocha, but you never know, it could be possible that they exist. There were Cambridge vases designed to hold any type, size or quantity of flowers. Some of the vase names included: bud vase, flip vase, palace vase, pillow vase, sweet pea vase, sweet potato vase, bulb vase, globe vase, urn vase, cylinder vase, ivy ball, bubble ball and rose bowl.

Cambridge used their vases to highlight a wide variety of etchings, cuttings and decorations, and as we looked at our variety of vases on display, we were very impressed by how the large size vases really showed off the decorations.

The #1242 - 12 inch vase was probably the most popular vase produced, and it is also the most heavily decorated. It is also found with a variety of silver decorations from companies like Rockwell, New York Silver and Silver City.

We had a total of 55 vases on the table and none of them were duplicates. Our smallest vase was a 3 inch Crystal which we thought could hold something like pansies. Some of the vases had an optic like the Amber Fan Vase which had to be very difficult to decorate,

but it still had an etching of Cleo on it. Many of the Cambridge vases were used to make lamps and many of the shapes lended themselves to that.

Just a few of the other examples that we looked at were the Ebony Frog Vase; a Crown Tuscan with black foot; a Crown Tuscan with Green Enamel; an Ebony Nautilus Vase etched Cleo; a Carmen Tally Ho Vase; an Amber Vase with Windsor Castle etch; an Ebony Vase with early enamel Roses on it; a Light Emerald Pillow Vase etched Gloria; an Amber Jenny Lind Vase; and an Amethyst Snail Vase. We finally decided that with so many choices, it probably boiled down to each person's personal preference of vase style.

Our evening ended with some wonderful food and desserts, and our meeting adjourned at 9:45 pm.

We do not meet in November as the Quarterly NCC meeting takes place in Cambridge, so our next study group meeting will be the annual Christmas party at the home of Rose MacConkey on December 2nd.

New members in the Columbus, Ohio area are always welcome and can contact either Linda Roberts at lrobert2@columbus.rr.com or Barbara Wyrick at bwyr@ee.net

--respectfully submitted by Barbara Wyrick, Secretary



Bill & JoAnne Lyle and Barbara Wyrick enjoying the "Vases" program presented by David Ray.



Some of the spectacular vases at the Wildflowers meeting.

Study Group Reports-continued

Study Group #16

The Elegant Glass Collectors

The meeting was held at Roger and Millie Loucks house in Lincoln Park, New Jersey on August 14th, 2010 at 2:30 p.m.

Present: Roger and Millie Loucks, Paul and Gail Duchamp, Ken and Jane Filippini, David and Wendy Loss, Rick and Cindy Jones, Walter Lee, Loretta Weeks, Bill and Von Dufft, Alex Wolk and Tom Mintz.

We discussed our Fundraiser. Next meeting will be at Bill and Von on October 23rd, 2010, Saturday. Christmas party will be held at Loretta's on December 11th, 2010.

Walter started the first of our Crystal Ball programs with the years 1982 – 1982. It was a most informative and interesting program. We learned so much about those years. It was exciting with lots of new information to all of us.

They changed editors in those years. The membership was wondering if they would get the Museum. Convention was discussed and advertised throughout the years. "Make early reservations for Convention" was the New Years resolution. Ronald Reagan, the President was shot. Fighting in Iranian and 3rd World Countries was going on. Willard Kolb, President and Editor. Friday night convention opened. Shenandoah was renovated and painted – Hooray! Directors were now being elected by mail. Nearcut was discussed in the Crystal Ball along with lots of Auction hype! March – Editor retired. A Flea Market in Fairgrounds accompanied Convention. Steps to form a Museum were taken. Study Groups changed #7 Buffs Eastern Ohio. April – Scotty Dogs in Ebon satinized. June \$25.00 pre ordered and \$30.00 later. Replacement for Editor. Turtle flower frog article. Phyllis lifetime membership. Imperial glass still in production – some Cambridge molds. 270 people attend the opening. \$250.00 for Blue Lady Flower Frog. Frank Wollenhaupt elected to the Board. #3400 line article by Mark Nye. Everglades article by Phyllis Smith. A postage stamp was 15 cents. World Series Dodgers won game with the Yankees 4 to 2. Superbowl Oakland won Philly. Unemployment 7.6. Phyllis Smith article on Arcadia. Arcadia came in Violet.

We then had a wonderful lunch followed by delicious desserts. Much chatter and then our beautiful and yet again informative show and tell, bring and brag, whatever you like. Simple outstanding Gloria gold encrusted etch on Amethyst 13" vase, Crackle peachblo twist optic vase, green wheel cut vase (unknown), gold encrusted gold krystal apple blossom bowl and candlesticks, candy car container, light emerald apple blossom etch syrup and powder sugar (3 pc.), LaRosa 14" Gloria etched vase, Hock in light emerald bowl and foot crystal stem with silver overlay, #183 Caprice pink LaRosa alpine pitcher, #184 tumbler of the same, Azurite ladle, Cobalt prism sign, Carmen 3400/1240 12" oval 4-footed bowl, Crystal shell line #83 5 1/2" 4 footed bonbon w. gold & ruby flashed decoration.

We concluded the meeting, said our goodbyes and will meet again in October. Respectfully yours, Gail Duchamp, Secretary



South Florida Depression Glass Club American Glass, Pottery, Dinnerware Show and Sale

February 12 & 13, 2011

Sat. 10am-5pm & Sun. 10am-4pm



Emma Lou Olson Civic Center
1801 N.E. 6th St. • Pompano Beach, FL

Directions: corner of NE 6th St. and NE 18 Ave.,
off Rt. 1, just north of Atlantic Blvd.

Admission: \$6.50 (50¢ off with this ad)

Info: www.sfdgc.com



Designs of the Past That Dazzle Today!



A great Cambridge swan-inspired gift for that special occasion. These sparkling 22KT gold-plated swans make superb ornaments for your tree, and wonderful holiday gifts, holiday or wedding table favors, or accent pieces as nut or mint cups. They also add accent to your Cambridge swan collection! A real value at just \$20 each (+ \$5 shipping), these swans are produced in the US by the same company that manufactures the popular Baldwin Brass Christmas ornaments. Each ornament is carefully packed in its own gift box. On sale through the Elegant Glass Collectors' Cambridge Study Group- please contact Bill Dufft at 610-777-3869 or billnvon@aol.com. Quantities are available- buy more than one and save on shipping!


**Sparkling Clearwater
Depression Glass Club**


Presents

32nd Annual Show & Sale

Featuring

DEPRESSION ERA GLASS, CHINA & POTTERY

Sat, January 22, 2011 11:00AM - 7:00PM
Sun, January 23, 2011 11:00AM - 4:00PM

>NEW LOCATION<

Honeywell MINNREG Bldg
6340 126th Avenue, Largo, FL 33773
Admission - \$5.00 per person
 (\$1.00 off with this ad)

FREE PARKING * FREE ID * SNACKBAR
\$1000 in DOOR PRIZES

(Prizes only available while supplies last. For more information visit)
 For information 727-725-2069
 or on the web at ClearwaterDepressionGlassClub.com
 Portion of profits benefit Pinellas County Libraries

NCC Events

2011 NCC Auction
Saturday, March 5, 2011

2011 Convention
June 22-26, 2011

Glass Shows

January 22-23, 2011
 Cartersville Looking Glass Show & Sale
 Cartersville, GA
 Call: (972)672-6213
 More Info: www.meyerlookingglass@hotmail.com
www.meyershows.com

January 22-23, 2011
 The Sparkling Clearwater Glass Show & Sale
 Largo, FL
 Call: (727)725-2069
 More Info: www.clearwaterdepressionglassclub.com

January 29-30, 2011
 Sanlando DG Show & Sale
 Sanford, FL
 Call: (407)298-3355
 More Info: www.allisonglassworks.com/millie.html

January 29-30, 2011
 Portlands "Rain of Glass" DG Show & Sale
 Hillsboro, Oregon
 More Info: www.rainofglass.com

February 12-13, 2011
 South Florida DG Show & Sale
 Pompano Beach, FL
 More Info: www.sfdgc.com

February 12-13, 2011
 San Antonio Looking Glass Show
 San Antonio, TX
 Call: (972)672-6213
 More Info: www.meyerlookingglass@hotmail.com
www.meyershows.com

March 12-13, 2011
 Spring Metroplex Looking Glass Show
 Grapevine, TX
 Call: (972)672-6213
 More Info: www.meyerlookingglass@hotmail.com
www.meyershows.com

March 18-19, 2011
 Heart of America DG & Pottery Show & Sale
 Independence, MO
 Call: (816)308-7495
 Email: hoagc@juno.com
 More Info: www.hoagc.org

LOOKING GLASS PRODUCTIONS

FEATURING: Depression Glass, China, Pottery & Vintage Collectibles

Show Schedule

Jan 22-23, 2011 Cartersville, GA	Aug 6-7, 2011 Pensacola, FL
Feb 12-13, 2011 San Antonio, TX	Aug 13-14, 2011 Slidell, LA
Mar 12-13, 2011 Grapevine, TX	Aug 27-28, 2011 Grapevine, TX

For information: Fred or Pam Meyer (972) 672-6213
meyerlookingglass@hotmail.com
www.meyershows.com

2011 Glass Sale & Show

Sponsored by
 The 20-30-40 Glass Society of Illinois
 Website: www.20-30-40society.org

Elegant, Depression, EAPG & Art Glass

Use this Card & Save \$\$ Table Ware & Table Decor

March 12th & 13th 2011
 Saturday 10:am - 5:pm Sunday 11:am - 4:pm

Door Prizes

Crystal repair; Glass identification; Reference library;
 Admission \$8.00 a person. \$7.00 with this card-limit 2
 Free parking and shuttle bus to front door.

CONCORD PLAZA MIDWEST CONFERENCE CENTER
401 WEST LAKE ST. NORTHLAKE, IL. 60164

DEALER DIRECTORY

Dealer Directory - \$24 for 12-months, size limited by box (see below). Includes listing on NCC website.

Advertising Rates:

1/8 page \$15 1/4 page \$20
1/2 page \$30 Full page \$50
(plus \$5 per photograph)

Electronic submissions should be emailed to:

ncccrystalball@charter.net.

Use Word. Mailed submissions and all payments should go to PO Box 416, Cambridge, OH 43725. Deadline is 10th of preceding month. Ads must be paid in advance. Show listings are FREE; send info to PO Box or e-mail address 60 days before event.

ALADDIN LAMP BOOKS

Kerosene Lamps 1884-1940
New book 2007

Bill & Treva Courter
brtknight@aol.com

3935 Kelley Rd. Phone 270-488-2116
Kevil, KY 42053 FAX 270-488-2119

Max Miller

Elegant Glassware • Books • Fiesta
...and more

THE MARKET PLACE

(713) 467-0450 - BUS 10910 OLD KATY RD.
(713) 461-1708 - RES HOUSTON TX 77043
MMXGLASS@aol.com

Cheshire Cat Antiques

Specializing in elegant depression to mid-century era glass and vintage kitchen glass.

Francee Boches > 305-884-0335
fboches@cheshirecatantiques.com

Pull up a Mouse!
Shop 24 hrs a day at
cheshirecatantiques.com



BAKER FAMILY MUSEUM

805 CUMBERLAND ST.
CALDWELL, OHIO 43724
740-732-6410

bakermuseumnellbaker@msn.com

Wed & Thurs 9-4; Fri - Sat 9-5

Classified Ads - Reach over 1,000 avid collectors of Cambridge Glass

CRYSTAL LADY

1817 Vinton St. Omaha, NE 68108
Bill, Joann and Marcie Hagerty
Shop 402-341-0643 Home 402-391-6730

Specializing in Elegant Glass & Collectibles
www.crystalladyantiques.com



Mother Drucker's Penny Drucker

Specializing in Elegant Glassware
Shows & Mail Order

PO Box 18087 (775) 851-7539
Reno, NV 89511 (888) MDRUCKER
www.motherdruckers.com

CRYSTALLINE COLORS

Cambridge • Fostoria • Elegant Glass
Penny Court Mall, Cambridge - 2 booths
Riverfront Antique Mall
New Philadelphia, OH (I-77, exit 81)
Booth #'s 626 and 616

Lynne R. Franks 216-661-7382

GLASS FROM THE PAST

Maureen Gillis



www.glassfromthepast1.com

email: maureen@glassfromthepast1.com

Cherished Collectibles

Shopping 24 hours in our online store
Glassware, Figurines, Collectors' Plates

www.cherishedcollectibles.com
Elegant and Depression Era Glass

TWEAK COLLECTIBLES

Specializing in Elegant Glass
BUY & SELL
WANTED: CAMBRIDGE TURKEYS
417-742-3653
btummons@aol.com

VIRTUALATTIC AT THE GLASS CHALET

SPECIALIZING IN ELEGANT DEPRESSION ERA GLASS
Sandra L. Bridwell-Walker PO Box 3448
William P. Walker Cleburne TX 76033-3448
Phone: 817-202-0940 www.virtualattic.com
Sandy's Cell: 817-559-0328 virtualattic@sbcglobal.net
theglasschalet@sbcglobal.net
Bill's Cell: 817-357-7084

Daugherty's Antiques

Jerry and Shirley
Antiques & Collectibles-Mostly Glass

www.daughertys-antiques.com
email: sdaugh2515@daughertys-antiques.com

Shows & Mail Orders 2515 Cheshire North
402-423-7426 (evenings) Lincoln, NE 68512

THE GLASS HOUSE ANTIQUE MALL
Furniture, Pottery, Glass
Antiques and Collectibles
I-70 Exit 146, East on SR 40

8825 E. Pike
Norwich OH 43767 TEL 740-872-3799

Milbra's Crystal Buy & Sell

Replacement and Matching
Milbra Long (817) 645-6066
Emily Seate (817) 294-9837
PO Box 784
Cleburne TX 76033

Specializing in
Cambridge
Fostoria, Heisey
and others

E-mail: longseat@sbcglobal.net
www.fostoriacrystal.com

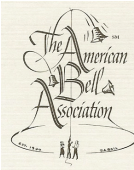
ISAACS ANTIQUES

(740) 826-4015

See our booths in Penny Court Mall in
Cambridge and at White Pillars Antique Mall
(Route 40, one mile west of
I-70 Norwich, OH • Exit #164)

The American Bell Association International, Inc.

7210 Bellbrook Drive
San Antonio, TX 78227-1002
www.americanbell.org



MARGARET LANE ANTIQUES

2 E. Main St. New Concord, OH 43762
Lynn Welker (740) 826-7414

Cambridge Glass Matching Service
Hours: Mon-Fri 10-12 AM, 1-5 PM
or by appointment

Our House Antiques



Linda and David Adams
Las Vegas, NV
1-800-357-7169

www.OurHouseAntiques.com
email: David@OurHouseAntiques.com

National Cambridge Collectors, Inc.
PO Box 416
Cambridge OH 43725

website: www.cambridgeglass.org
e-mail: ncccystalball@charter.net

Friends of Cambridge – Annual Fund

NCC exists through member giving using an Annual Fund system to raise operating funds and to ensure the preservation of Cambridge glass for future enthusiasts. The Annual Fund uses a common member "renewal" date and NCC sends out Annual Fund materials to everyone once a year during March/April. There are no monthly reminders or monthly renewal dates. The Annual Fund is NCC's primary means of support and all Annual Fund gift recognition levels are per household and include membership for all adults within the household. Additionally, each household will receive a subscription to the Crystal Ball newsletter, unlimited admissions to the museum, and rights to vote in elections for the Board of Directors. Multiple households at the same address are welcomed. NCC is a 501C(3) organization and Annual Fund gifts are allowed as a tax deduction under Section 170 of the Internal Revenue Code.

Levels of Membership

Patron	\$35
Benefactor - Century	\$100
Benefactor - Mardi Gras	\$200
Benefactor - Japonica	\$500
President's Circle	\$1,000

President's Circle includes Convention registration for two members in the household and one copy of any new NCC publications.

National Museum of Cambridge Glass Open April thru October only

Located at 136 S. 9th Street
in downtown Cambridge,
Ohio
Closed for the season
see you in April

