



# Cambridge Crystal Ball

Published by the National Cambridge Collectors, Inc. as a resource which informs, invites and inspires the continued preservation of the glass produced by the Cambridge Glass Company of Cambridge, Ohio for future generations.

Issue No. 413

December 2007

## The NCC Benefit Auction - Going, Going....Sold (don't let this happen to you!)

By Helen Klemko

Each year, members of NCC eagerly await the arrival of **The Auction** which is held annually in March. The next NCC Benefit Auction will be held at the Pritchard Laughlin Civic Center, in Cambridge, on Saturday, March 1. The many lots of wonderful glass have already arrived in Cambridge to be catalogued and organized for listing in the January 2008 Crystal Ball. The Auction preparation is a huge job completed by a very dedicated committee headed by Squeek and Dorothy Rieker and Lynn Welker. Not only do the items have to be catalogued, but photos taken so that you can have a preview in the February Crystal Ball. If you would like to see what items have been available in prior year auctions, go to the website at [www.cambridgeglass.org](http://www.cambridgeglass.org) and click on **Auction** on the Homepage. The listings are from 2002-2007. There are always items of outstanding quality and variety.

The February Crystal Ball will feature many of the lots available in this year's Auction – and they will be presented in color. Wow! That will be exciting and also a first. Because of the support from your Board, two color issues of the Crystal Ball will be published each year – August and February. The August issue will cover the Convention, and the February issue will showcase the Auction.

During the year, you possibly attend auctions which may include a few pieces of Cambridge glass. But folks, this is the premier auction of Cambridge glass held anywhere in

the country. Nowhere else could you participate in an auction of approximately 400 lots comprising entirely of authenticated Cambridge glass. When you read the auction list in the next issue, I am certain you will begin to get excited about a special piece or pieces to add to your collection. You know that there are always special pieces! Part of the fun of an auction is attending personally, so plan ahead to come to **The Auction**. Auctions are very exhilarating and when the adrenalin pumps who knows what will happen. If you would like to make a reservation at a local motel, a listing is on page 12. Before we know it, March 2008 will be here, and you do not want to miss this wonderful opportunity to participate in the frenzied bidding that can occur over that “special” item.



However, if you are unable to come to Cambridge and attend **The Auction** please make sure that you send in your absentee bids. All the “how-to” information will be in the January Crystal Ball, so stay tuned. Many absentee bids are

successful. Whether you bid in person, or send in an absentee bid, not only do you add wonderful pieces to your collection, but 20% of your purchase price remains with NCC to support future activities.







# President's Message

## Raising the Bar, Part Two

In last month's Crystal Ball we talked about our proud position of strength as an organization and how every year we find new ways to become stronger and more successful. So what about 2008?

This is an interesting milestone year. It marks the 50<sup>th</sup> Anniversary of the final closing of the Cambridge Glass Company ... and our preservation organization is going as strong as ever.

2008 marks the tenth anniversary of the flood that destroyed our museum ... and our preservation organization is going as strong as ever.

It is important this year that we mark these events as they are defining moments. Our new convention chair, Sharon Miller, and her committee are already organizing program ideas that mark these events.

I know that every year I say it would be great if you started planning now to come to our June convention – this year I mean it even more! Ten years ago we had what was at the time our biggest crowd ever – and we went home early due to flooding. Four years later we had an even bigger crowd as we opened our new National Museum of Cambridge Glass. It seems fitting again this year to gather in Cambridge and join in fellowship to mark these events and our shared ability to rise over adversity.

At this year's programs and particularly at Convention I want to stress "inclusion." We have a great and generous membership that has supported our shift in membership model and the move to an Annual Giving approach (which we will do again this year in late March or early April). But maybe you are ready to take your involvement to a new level.

As a volunteer organization, we require talented and committed people to help work on the things we can and need to do to manage ourselves as an organization. Some are very high profile – like Board positions, Museum Director, Crystal Ball Editor, etc. – but some are less visible. Who ships out our book sales? Who maintains the list of our museum inventory? Who designed our museum brochure? Our Heritage Society brochure? Who helps clean the shelves of the Museum during the off-season?

There is much to be done and much that can be done. Once again, as we celebrate this holiday season and face a new year, I'd ask you to think – do you want to help out more? How can you help out more? Our needs are endless and we are very flexible.

Cindy Arent can always use more volunteers to help at the museum and work with her Cordials Study Group during the off-season.

We could use a professional to help evaluate the insurance the club has on the museum and other insurance needs. We could use help improving how we value our museum contents.

We always need more educational programs. There was a time when we had slide shows on various topics. These slides were destroyed ten years ago. We now live in a PowerPoint and email world where more creative presentations can be built and then instantly sent to study groups around the country. Do you have one in you?

Our financial needs are great and grow more sophisticated. Mike Strebler can always use help from a Budget Director, an Inventory Manager and several more spots I'm sure he can tell you about or help create based on your unique skill set.

I have received enormous satisfaction in volunteering my time to NCC. It really became a defining moment in my life and I rarely tire of it. If you talk to our other volunteers I'm sure you'll hear more of the same.

Could 2008, this milestone year, be the one where you take the next step of involvement with our organization, even if it just means coming to a convention to see what we are all about?

We have many other objectives for this coming year: pay off the mold fund; find an Annual Fund coordinator and have a successful 2008 renewal of this program; find a Member Relations person so we increase our communications with our benefactors; launch a redesign of our website with both strong education and marketing platforms (David Adams is working on some wonderful ideas!); plus many more that space here doesn't allow me to get into today.

We have long said the lifeblood of our organization is our membership. It's a classic – you get what you put into it. This is a great time in our lifecycle to become even more involved in National Cambridge Collectors. We have a shared bond in our love for the glass and the multi-tiered value of our preservation mission. Give it some thought this holiday, and let me know after the first of the year.

From your Board of Directors and your fellow members at NCC, we wish you all a happy and healthy holiday season!

# Between friends.....

**Disposable Income.** What is that you ask? One definition states that it is the total income that can be used by a household for either consumption or saving during a given period of time. It is the amount of money that you have available after all taxes have been paid. These are the funds that you use to pay your bills, have fun and save for that rainy day.

Usually we go through our working years with a limited amount of **Disposable Income**. We hope that when we reach retirement the amount we have put aside for our later years will include sufficient **Disposable Income** to make life comfortable, and perhaps continue to purchase Cambridge glass.

Our members run the full gamut of ages. Some are in their early working years; others are paying down mortgages, raising a family, and saving for retirement. Others are retired and possibly wondering what to do with all the Cambridge glass that they have amassed over the years.

When the collecting bug hits, the first reaction is to buy everything in sight - as we may never see it again. But, somewhere along the way we realize that we do see pieces again and our likes and tastes alter and change direction. This is what makes collecting so interesting.

Why do we feel the need to collect? Most collectors will tell you that they have always collected something, and now it just happens to be Cambridge glass. Is it in the genes - did your parents or grandparents collect, and therefore without any hesitation you collect also?

For most Cambridge collectors we just love the glass - the colors - the shapes and so on. But there is also a bond which develops between collectors. We learn to appreciate what others collect and even look to find pieces for their collections. We reach a point when although a certain vase may look great in our own collection, it would look even better in another collection, so we pass it on. We "recycle".

We are so fortunate to belong to this wonderful organization which is dedicating itself to the preservation of Cambridge glass for future generations. We are part of the history of Cambridge glass. But such forward thinking organizations continually need the support of their members.

If you plan on using some of your **Disposable Income** to purchase gifts this year, consider buying an NCC book, or a pair of Scotty Dogs, or purchase a membership in NCC for a friend, so that they can be included in all the activities throughout the year. I hope that everyone has a safe and happy holiday season. See you in 2008.

Helen Klemko, Executive Editor  
[ncccrystalball@charter.net](mailto:ncccrystalball@charter.net)

*Helen K.*



## My Favorite Thing

When you think about your collection, what piece of Cambridge glass immediately comes to mind as being that very **special** item. Please share with other members and send a photo to me at [ncccrystalball@charter.net](mailto:ncccrystalball@charter.net) so it can be featured in the Crystal Ball.



## *Cambridge glass adorns the Christmas tree at the Museum*



## National Depression Glass Association's year long display at the National Museum of Cambridge Glass comes to a conclusion

In a wonderful show of inter-club spirit of cooperation, the National Depression Glass Association (NDGA) just concluded a year long program of having part of their national glass collection on display at the National Museum of Cambridge Glass in our rotating display room. The NDGA had an opportunity to extend their outreach program as hundreds of glass collectors had the unique chance to learn about a variety of beautiful glass made during the Depression Era.

Also this year, members of the NDGA had a chance to learn more about Cambridge Glass via displays at their annual convention. This year's event was in Modesto, CA and the Cambridge displays were coordinated by Tony Nettell. The NDGA convention chair was NCC member Ed Staley.

Representing NDGA last November to set up their display at the Cambridge Museum were Sarah Van Dalsem and Linda Bredengerd. They also were honored at NCC's November quarterly meeting and dinner. Coming full circle, Linda and Sarah returned to Cambridge this November to pack up their display. This year they were joined by Pam and Fred Meyer. All four joined us for this year's November meeting, dinner and program on Cambridge etchings (and they all joined NCC!). In addition to thanking NDGA for their year long display, we also acknowledged Pam Meyer's birthday that day!

As a token of appreciation, NDGA presented NCC with a donation that was applied to our Mold Fund Campaign to pay for our 2006 acquisition of the Cambridge molds owned by Summit Art Glass ... a fitting support of glass preservation.



l-r - NCC Treasurer, Mike Strebler, NDGA Board Member, Sarah Van Dalsem, NDGA Acquisition Committee Chairperson, Linda Bredengerd and NCC President, Rick Jones receiving the NDGA check.

---

---

## November Program - "Etchings by Cambridge"

This year's November Program titled "Etchings By Cambridge" brought forth a dazzling display of glass. The photos below are a representation of the wonderful items contributed to the program by the members. Lynn Welker expertly led the program with a discussion of the many etchings created by the Cambridge Glass Company over their 57-year existence as well as the etching process. (If you would like to see these photos in color go to [www.cambridgeglass.org](http://www.cambridgeglass.org), Members Only. User Name: NCC, Password: CarmeN (case sensitive).



# November ~ A Busy Month at the Museum!

By Cindy Arent

We would again like to thank the National Depression Glass Association for loaning pieces from their National Collection to display in the museum during the 2007 season. Fred and Pam Meyer, Linda Bredengerd and Sarah Van Dalsem arrived in Cambridge during the quarterly meeting weekend to pack their glass for the trip home. NDGA also made a donation to the NCC Mold Campaign and we appreciate their support in our preservation mission.

The morning after the meeting, several NCC members stayed in Cambridge a few extra hours and hit the streets to perform some community service. Armed with staple guns, wire and screw drivers, members helped move the Dickens Victorian Village vignettes to Wheeling Avenue. The photo shows some of the members who worked that day standing with the "Glass Blower at Work" on the corner close to the museum. Last year when Frank and Vicki Wollenhaupt visited during the Holiday Parade, Frank put forward the idea of having a glass blower as part of the Dickens Village. We were very fortunate to have been able to implement his great idea and thank Frank for his suggestion!



I-r, Linda Bredengerd, Pam and Fred Meyer and Sarah Van Dalsem



I-r, Sharon Miller, Cindy Arent, Carl Beynon, Vicki Wollenhaupt, Frank Wollenhaupt, Mark Nye, Norma Hufford and Ron Hufford

While members worked on the street, Rich Bennett and his son Steve were moving part of their collection into one of the Museum Feature Rooms for the 2008 season. The room is now finished and looks fabulous. Photos will follow in a future issue of the Crystal Ball.

Four days later, Squeek and Dorothy Rieker arrived and spent three days working with Lynn Welker on the 2008 auction glass. They unpacked, inspected and repacked all of the glass, quite a task to be completed in just three days! At the same time, other members were decorating the museum for the Holidays in preparation for a program we are hosting for the Glass Pass partners. During these work days, we had visitors pulling on the door, wanting to see the museum. It is difficult not to open the door, so we usually let them in for quick peek at the displays which almost always results in a sale from the Gift Shop.

Happy Holidays and all the best for 2008 from your museum volunteers!



An early preview of some of the items in the **2008 NCC Benefit Auction.**

Dorothy & Squeek Rieker during the unpacking, inspecting and repacking of **The Auction glass.**



# LYNN WELKER

Phone numbers: (740)826-7414  
(740)705-1099 - evenings & weekends

2 East Main Street  
New Concord, OH 43762

Prices each, UPS extra

## CAPRICE, CRYSTAL

#300 2.5 oz Wine (8)	22.
#310 12 oz Tall Tumblers (6)	25.
#179 32 oz Jug	85.
#50 8.5" Square Bowl 4 ftd.	40.
#100 Cruet and Stopper	75.
#183 80 oz Ball Jug	75.

### MUCH MORE CAPRICE - CALL

## CHANTILLY

#3900/24 10.5" Dinner Plates	75.
p288 4 pce Twin Salad Dress Set	65.
#3625 10 oz Ftd. Tumblers (4)	22.
Martha 8.5" Plates (3)	14.
#3625 Oyster Cocktails (3)	20.

## ELAINE

#3500 Tall Blown Comport	45.
#968 2 pce Shrimp Icer	45.
#3500 10 oz Ftd. Tumblers (2)	22.
#7966 2 oz Sherries (8)	40.
#3500 10 oz Goblets (3)	25.

## ROSEPOINT

#3121 10 oz Goblets (12)	32.
#3500 10 oz Goblets (12)	32.
#3900/18 2 pce Shrimp Icers (2)	60.
#3500/152 Celery & Relish	85.
#1351 Crimp Bowl, bead feet	100.
#3400 or #3900 Cups/Saucers (8)	30.
#1617 Hurricane Lamps (pr.)	350.
#3400/200 Oval Celery/Relish	60.
#3900/129 3 pce Mayo Set	55.
#3900/120 Celery & Relish 12"	60.
#1238 12" Keyhole Stem Vase	125.
#3400/28 7" Keyhole Stem Comport	75.
#3900/136 5.5" Comport	50.

### MUCH MORE ROSEPOINT - CALL

## WILDFLOWER

#3121 5 oz. Ftd Juice Tumblers (4)	22.
#3900/115 13 oz Barrel Tumblers (6)	35.
#3900/120 12" Celery/Relish	45.
#797 8" Flip Vase	125.
#3500/15 ind.Sugar/creamer pr.	35.

### MORE WILDFLOWER - CALL

## CAMBRIDGE ARMS,CANDLE PARTS

#1536 5" Peg Nappies	10.
#1633 5" Peg Vases	20.
#1563 4 Candle Arms	18.
#1596 6.5" Candlebases	40.
#19-1 Bobeches with 8 Prisms	35.
#2355 7" Ruffled Vases	25.
#2355 6.5" Epergne Vases	22.

### MORE PARTS, CANDELABRA CALL

## COLORED CAMBRIDGE

### Carmen

#1066 Goblets (8)	25.
10" Keyhole Stemvase	75.

### Royal Blue

#3122 Sherbets (6)	25.
Tally Ho Cups/Saucers (6)	25.
Nautilus Water Pitcher	150.

### Windsor Blue

Hat	75.
-----	-----

### Crown Tuscan

7" Charleton Shell Plate	40.
Keyhole Ivyball	50.
Flying Lady Bowl	250.
4 pces. Gold Rosepoint	Call

### Azurite

Perfume Lamp, Rare Base	200.
-------------------------	------

### Forest Green

#3400 Cabinet Flask	80.
---------------------	-----

### Amber

Stratford Dolphin Candle (pr)	175.
10 1/2" Flip Bowl, Etch #725	25.

### Gold

Martha Washington Stein	35.
#3400 Cups/Saucers Gloria etch (6)	25.

### Smoke

12 oz Georgian Tumblers	18.
-------------------------	-----

### Tahoe Blue

#216 5" Caprice Ashtray	40.
-------------------------	-----

### Pink

#37 6" Caprice Oval Tray	40.
#70 7" Caprice Candlestick	50.

## Milk Glass

Caprice Cruet & Stopper	90.
Martha Washington Pitcher	45.

## Peachblo

8.5" Draped Lady Flower Frog	140.
------------------------------	------

## CRYSTAL CAMBRIDGE

Buddha Lamp, complete	250.
Bluejay Flower Frog	85.
Tombstone Bookends, small base nick	65.
Marjorie etch Tumblers (4)	16.
Diane etch #3122 Goblets (12)	22.

## SWANS

Crown Tuscan 8.5" Style III	125.
Crown Tuscan 3" Style III	30.
Ebony 8.5" Style I, signed	140.
Ebony 3" Style I, signed	50.
Emerald 8.5" Style III	125.
Emerald 3" Style III	35.
Lt.Emerald 10.5" Style I, signed	250.
Lt.Emerald 3" Style I, signed	35.
Crystal Swan Punchcups (12)	40.
Crystal Swan Punch Base only	250.
Crystal Swan Punch Set	Call
Mandarin Gold 3" Style III	30.
Amber 3" Style II, signed	85.
Gold Krystal 3" Style II, signed	40.
Royal Blue 3" Style II, signed	125.

## NUDES

Amethyst, Gold or Amber Cocktails	90.
Amethyst Claret	125.
Forest Green Goblet	185.
Amethyst Champagne	160.
Crystal Cupped Comport	125.
Carmen Comport	250.

### MORE NUDES - CALL



# The 2007 Annual Fund & Benefactors

By Mike Strebler

Hopefully everyone has been reading the President's message in the Crystal Ball over the past year and has an understanding of the transformation the National Cambridge Collectors (NCC) has undertaken in its support model. NCC is like most other non-profit organizations that rely on the generosity of its membership. Each of us makes choices when we prioritize our charitable giving whether it be church, alma mater, or other organization we feel passionate about. NCC is very fortunate to have been included in so many member's charitable giving plans during the past years.

Since our organization exists through member giving, NCC has developed a system to keep track of the gifts we receive. The mechanism is the Annual Fund. The Annual Fund enables us to operate the museum, publish the Crystal Ball, and carry out our mission activities of education and preservation. Most other activities are self-supporting such as convention, auction, and quarterly meetings. The 2007 Annual Fund enabled this year's payoff of the museum mortgage loan and the increase in the quality of the Crystal Ball publication.

All unrestricted gifts to NCC are included in the Annual Fund using calendar year reporting. If there is more than one gift in a year, the gifts are aggregated when recognizing the member. NCC also receives gifts for specific purposes which can only be used for the purpose indicated. These restricted gifts are recognized separately and not included in the Annual Fund.

Another operating change due to the Annual Fund approach is the use of a common renewal date. NCC will send out our renewal materials only once a year. This mailing will take place between March 15 and April 1 each year. The mailing will also include the balloting process for board elections. The process is definitely different than prior years. The main difference is there are no monthly renewal dates as before, and the Century Club is merged into the Annual Fund. The change has presented some problems in transition. The annual fund model does not accommodate gifts representing multiple years. The greatest confusion seems to have resulted from gifts, especially new members, received at a time other than the annual renewal date. For these partial period members, the policy is to accept any amount the member feels is appropriate.

NCC is a collective of glass friends who enjoy and appreciate the artistry of glass produced by the Cambridge Glass Company. Principles that would apply to a membership sale model are not really applicable to NCC; there is nothing to buy. To be a member of NCC you only need to support the organization at whatever level you choose and have fun. This approach has worked well in 2007 as it allowed for the achievements mentioned above, and membership increased significantly over 2006. Thank you to all the members who contributed at the Patron level during 2007. NCC is especially grateful to the members who contributed at the Benefactor levels and they are recognized in the listing on page 9. The listing is as of October 21, 2007 and reflects the names included in the membership data base. Please email [Caprice0@aol.com](mailto:Caprice0@aol.com) or write to the main NCC address with any errors or omissions.

## Presidents Circle (\$1,000 and over)

Allenbaugh, Marcy & Dale  
Downing, Robert & Margaret  
Filippini, Ken & Jane  
Finley, Jim & Nancy  
Hansen, Les  
Jones, Rick & Cindy  
Strebler, Mike & Lisa  
Thaxton, Lindy  
Rieker, Squeek & Dorothy  
Taylor, Richard & Leslie

## Japonica (\$500-999)

Arent, Mike & Cindy  
Coleman, Clyde & Jeanne  
Klemko, Helen & Steve  
Miller, Sharon & Joe  
Moore, Freeman & Jeannie  
Treier, Melissa, Karen & Max

## Mardi Gras (\$250-499)

Adams, David & Linda  
Bennett, Rich & Sally  
Berry, Brent & Hedi  
Beynon, Carl & Shirley  
Bratzke, Janet & John  
Buffenbarger, Julie  
Citron, Shelley & Alex  
Dawson, Joyce & Bill  
Ellis, Bob & Marcia  
Everett, Larry & Susan  
Gary, Diane  
Hermone, Sharon & Ronald  
Lacy, John & Lisa  
Lake, David & Kathy  
Lippy, Bonnie & Dwayne  
Litten, Ralph & Kathy  
Mang, Ann  
Marchant, Kay & Frank  
McClain, Sherry  
Morton, Jane & Paul  
Namon, Barbara & Richard  
Nussbaum, Shelby & Kathy  
Rhoads, Ken & Judy  
Russell, Don & Ruth  
Schaefer, Fred  
Warren, Douglas & Linda  
Willmot, Florence  
Wollenhaupt, Frank & Vickie  
Wyrick, Barbara  
Young, Kathie and Ricky



## The 2007 Annual Fund & Benefactors (continued)

### Century (\$100-249)

Adkins, Linda  
Alexander, Bill & Cynthia  
Allen, Brad & Cooper, Gene  
Andrejcek, Joe  
Arnold, Anna, Carol Bennett, Theresa  
Cameron  
Baker, Nelda  
Bemiss, Janet & Stephen  
Bernstein, Brad & Denise  
Bond, Dale & Joan  
Buenting, Evelyn & Bob  
Buffenbarger, Sandra & Jim  
Carlson, Connie  
Carlson, William & Janet  
Case, Mary  
Chorey, David & Aloma, Brigitte  
Christiansen, Patricia  
Coleman, Joann  
Conrath, Harold  
Cook, Robin & Timothy  
Curnutt, James & Rose  
Deel, Tarzan  
Farlow, Marjorie  
Forbes, Earl & Mary  
Friedly, Karen  
Glass, Dr. Carter  
Glass, William & Betty  
Gotschall, Margaret & Dale  
Gray, Arthur & Patricia  
Gready, Frank & Sue  
Greathouse, James & Kathleen  
Harris, Pauline  
Harrison, Patricia & Robert  
Harvey, Janice & Bruce  
Healy, Fleur De Lys  
Heincy, Dan & Leta  
Hogue, Perry  
Hulbert, Dolores  
Jagodnik, Irene  
James, Lois  
Johnson, Mary Ann  
Jones, Jim  
Kastner, Robert & Janice  
Kawalek, Kathleen  
Kleintjes, Donna  
Kuczewski, Daniel  
Lanning, John & Patricia  
Larson, Jeffrey & Janice  
Larsson, Swede & Kay  
Lee, Ruth

### Century (continued)

Loader, Bill & Patricia  
Loucks, Roger & Mildred  
Lyon, Mary Sue  
Macconkey, Rose  
Mason, Velma  
McFadden, Joy & Mary Beth Hackett  
McKinney, Charles & Mary Ellen  
Miller, Max  
Misel, Nancy  
Mitchell, Janet Lee  
Mitchell, Sue  
Moe, Elizabeth  
Momirov, Judy  
Morris, Gloria  
Oliver, Norma  
Otten, Mac & Georgia  
Pfanenstiel, Mary  
Quaintance, Bonnie and Bob  
Ramage, Wayland & Judy  
Randolph, Lynda  
Ray, David  
Repko, Jane & Wayne  
Rietz, Richard  
Ritchin, Barbara  
Roberts, Linda  
Robinson, Trevor  
Rogers, Don & Jane  
Rutledge, Patricia  
Sarchett, Elizabeth  
Smith, Ruth  
Stanton, Nyla & Bruce  
Torner, Baruch  
Van Skiver, James Jr. & Rita  
Wall, Julia  
Wanser, Betty & Herbert  
Warner, Ronald & Susan  
Weeks, Charlie & Loretta  
Weinman, Lorraine & Mark  
Welker, Lynn  
Wharton, Ann  
Zemo, Brenda, Audrey, Ann

### Special Tributes (In Memoriam)

Kuczewski, Pamela Dawn  
Laird, Ruth Harwig  
Mitchell, Dave  
Snyder, Dennis  
Stevens, Pat

# 2008 NCC CONVENTION MARK YOUR CALENDARS NOW!!!!

Mark your calendars now for the 35<sup>th</sup> National Cambridge Collectors Convention. The activities will begin with the picnic on Wednesday evening, June 25<sup>th</sup> and will conclude with the Worker's Reunion at the Museum on Sunday, June 29<sup>th</sup>.

The Convention theme this year is "**The Elegance of Cambridge**". It is the intent of the committee to take a look back over the 50 years since the closing of the Cambridge Glass factory and 10 years after the 1998 flood, to celebrate and appreciate the vision of those who believed in the need to preserve a very important piece of glassmaking history. We also plan to bring back a couple of traditions from past conventions.

Please be looking in your glass cupboards for a piece of glass or other Cambridge memorabilia to donate to the Friday evening mini-auction. We do ask that the piece have a value of at least \$25.00. Our most entertaining auctioneer from last year, Alex Citron has agreed to a repeat performance. Remember that all proceeds go to support our wonderful museum.

Finally, those of you already familiar with Cambridge and its motel facilities, may want to reserve your rooms soon. Look for motel information in this Crystal Ball (page 12) as well as the January issue. I am excited to be chairing this event and have a great committee of Kay Marchant, Jill Ross and Elaine Thompson. Any suggestions for Convention are still welcome at [s.miller@omeresanet](mailto:s.miller@omeresanet) or [s.miller@cebridge.net](mailto:s.miller@cebridge.net).



## *The National Museum of Cambridge Glass Holiday Hours of Operation*

*Saturday, November 24 - noon to 4:00 p.m.*

*Sunday, November 25 - noon to 4:00 p.m.*

*Saturday, December 1 - noon to 4:00 p.m.*

*Sunday, December 2 - noon to 4:00 p.m.*

*Saturday, December 8 - noon to 4:00 p.m.*

*Sunday, December 9 - noon to 4:00 p.m.*

*Saturday, December 15 - noon to 4:00 p.m.*

*Sunday, December 16 - noon to 4:00 p.m.*

*Hours of operation are in  
addition to scheduled  
tour groups for  
Dickens Victorian Village 2007*

*Dickens Tour Groups can be  
scheduled at any time.*

### **"At Print Time"**

Word reached us as we were going to print of the passing of long-time Glass Dash dealer Phil Platten from Two Hats Antiques. We will publish an "In Memoriam" in our January issue of the Crystal Ball to this valued friend of Cambridge.

## **Comfort Inn Re-ups NCC Convention Rates**

The club has again negotiated a block of rooms at the Comfort Inn for our June 2008 Convention. The glass club rates for standard rooms will be \$70 a night for June and August meetings and \$60 a night for the March and November meetings.

When you call them (740-435-3200) you must tell them you are with the Cambridge Glass Club. For June, please CALL THEM. If you try to book online, it may show the hotel is sold out. It likely is not sold out as we have blocked 40 of their 50 or so rooms. If any members can negotiate group rates at other hotels, please let the Crystal Ball know and we will publicize this as well.

### **CAMBRIDGE GLASS WANTED NUDE STEM COLLECTOR IS LOOKING FOR THE FOLLOWING ITEMS**

- #3011/10 Carmen V-Cocktail**
- #3011/5 Carmen Hoch**
- #3011 Carmen Cigarette Holder**
- #3011 Carmen Sweetmeat**
- #3011/27 Amethyst Blown Candy bottom**
- #3400/95 4-1/2-inch Carmen Puff Box and Lid**

Also, please contact me if you have any #3011 Etched stems for sale.

Condition is of the utmost important - only first quality factory original pieces will be considered. Please email or call with specific piece and asking price.

**I will answer all phone calls and emails  
614-460-9462  
[squeek@compuserve.com](mailto:squeek@compuserve.com)**

by Frank Wollenhaupt

For those of you that have turned to the Ebay report to read the stunning descriptions put forth by John Peterson, I offer my apologies. You are stuck with me and my less than over the top descriptions. For those of you that haven't heard, John has had a few medical problems and is out of commission for a few weeks. After reading my report, you might all send John a get well card and tell him how much you miss him and his prose.

At the November quarterly meeting, I was asked by Helen Klemko to fill in for John while he recuperates. How can anyone refuse Helen? With that said, it is funny that she picked me. For some of you old-timers, you might remember several years ago (June 1975) I wrote a similar article/story called Collectors Corner. This was before ebay and was to keep members apprised of new Cambridge discoveries. This column went on for several issues but like many just died away. Without member feedback columns can't live forever.

I promise not to kill this column before John can get back and breathe new life into it.



**NUDES**

During the month of October, the nude stem items were selling at a brisk pace.

We find a set of Crown Tuscan sticks selling for \$316.00 with its mate, a Crown Flying Lady bowl with all over gold highlights going for \$380.02. Also during the month, we find a crystal nude comport etched Diane selling for \$450.00. WOW what a beautiful item she was. We also had our chance to purchase a nude comport with a Carmen top for \$166.00 and a Royal Blue one for \$175.00. Another very unusual one was a crystal nude comport all over satin finish, you don't see that often.



**FLOWER FROGS**

Flower Frogs were also very strong in October. We find a Moonlight Blue 8 1/2" draped lady selling for \$195.00, a 12 1/2" Light Emerald Green satin finish draped lady going for \$345.99, a Light Emerald Green two-kid frog and bowl selling for \$190.04. I'm afraid she might need a passport to get back into the country. She was purchased from Bristol, Avon, United Kingdom. Also this month was a #823 Flower Center in amber selling for \$178.49. This is something not many people have in their collections.

**SWANS**

We saw many swans sold during the month but nothing really unusual.

**ROSEPOINT**

Rosepoint was strong thorough the month. Two Rosepoint coasters sold for \$100.99, something you seldom ever see for sale. A

This report is provided to keep members up with what's happening on the world's largest Internet Auction site. It is not meant as an educational tool, nor as a pricing guide, and we cannot guarantee the accuracy of listings herein.

Rosepoint 76oz Doulton Pitcher sold for \$256.99 and a 3400-10 3/4" vase that was drop over dead beautiful. The gold was so fabulous against the dark Carmen of the vase that my knees got weak just looking at it. (That last description was for John) The final price for the vase was \$5500.00.



**ETCHINGS**

I was surprised to see all the etched colored items



this month. A real nice amber 3400 cheese and cracker set etched Portia sold for \$74.77. I think that was a great buy. For the Apple Blossom collector, you could have purchased a Carmen 3130 water goblet etched Apple Blossom for \$338.33, or a set of 4 pink 3400 cups and saucers etched Apple Blossom for \$160.99. If Rosalie is your etching, you could have won a set of 4 pink #731 whiskey tumblers etched Rosalie for

only \$206.70. This is a real unusual tumbler. Or if Cleo is your choice, a willow blue ice bucket for \$149.95. One of the more unusual items this month was the pair of #691/3000 amber canapé plates with the rare Mah Jongg etching. These are really great. The final price



was \$510.00 for the pair. Our final etched item of the month was a #769-12" vase in light emerald green with the Dragon etching, a hard vase to find with an even harder etching on it. Final price \$1025.00

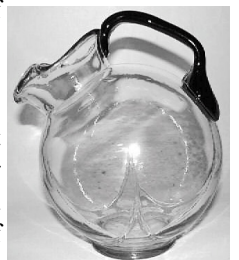


**MISCELLANEOUS**

This section is just some items that I thought deserved another look. Things you might have missed the first time around. A Topaz #680 dresser box with gray floral cut decoration. Final price \$150.00. Topaz, a bright yellow/green, a sleeper in Cambridge colors. Do you have a piece in your collection? A 3400/80oz pitcher with a black handle final price \$59.58. This is really unusual, how many of you didn't give it a second look?

The "Genteel" Elephant candy container.

This is just one of three that has sold in the past month, and before that I haven't seen one sell for several years. This one sold for \$160.49. How many of you realized that Cambridge



made candy containers? Some of the rarest candy containers made, are ones that Cambridge made. Several of them sell for \$3,000 to \$4,000 each.

So ends the ebay report for this month. I don't know if I will be back next month or if John will be. Remember to keep hunting.

# Dates to Remember

## NCC Events

**2008 NCC Auction**  
**Saturday, March 1, 2008**



**2008 Convention**  
**June 25-29, 2008**

*If you know about any upcoming glass shows or other glass events, please pass the word on to us at least six to eight weeks before the show dates. These listings are free of charge.*

## Glass Shows

**January 25-27, 2008**

Sanlando DG Show  
Sanford, FL  
Call: (407)298-3355/(407)855-5502  
E-mail: milliesglass@webtv.net

**February 2 & 3, 2008**

South Florida Glass Show & Sale  
Ft. Lauderdale, FL  
Call: (305)884-0335  
E-mail: fboches@cheshirecatantiques.com

**February 9-10, 2008**

Washburns San Antonio Show  
Live Oak, TX  
Call: (210)599-0635  
E-mail: washburnk@aol.com

**February 9-10, 2008**

Sparkling Clearwater DG Show & Sale  
Downtown Clearwater, FL  
Call: (727)725-2069  
Info:  
ClearwaterDepressionGlassClub.com

**February 15-17, 2008**

Houston Glass Show & Sale  
& The Best Little Antique Show in Texas  
Rosenberg, TX  
Call: (713)461-1708/(214)734-7216  
E-mail: mmxglass@aol.com  
E-mail: rmtheiss@tx.rr.com

**February 23, 2008**

Green River Glass Show & Sale  
Kent, WA  
Call: (253)852-5250  
E-mail: kayswede@msn.com

## CAMBRIDGE MOTEL INFORMATION

### NCC Auction - Saturday, March 1, 2008

All of these motels are located in Cambridge at Exit 178, Ohio route 209 off Interstate 70.

#### AMERIHOST CAMBRIDGE

State Route 209 South  
740 439-1505

#### BEST WESTERN CAMBRIDGE

1945 Southgate Parkway  
740 439-3581

#### HAMPTON INN CAMBRIDGE

8775 Georgetown Rd  
740 439-0600

#### HOLIDAY INN CAMBRIDGE

2248 Southgate Parkway  
740 432-7313

#### COMFORT INN CAMBRIDGE

2327 Southgate Parkway  
740 435-3200

#### DAYS INN CAMBRIDGE

2328 Southgate Parkway  
740 432-5691



Glass Repair  
Snack Bar • Door Prizes

## South Florida Depression Glass Club 34th Annual Show & Sale

*American Elegant & Depression Glass,  
Dinnerware, Pottery*

**February 2 & 3, 2008**

**War Memorial Auditorium**

**800 N.E. 8th Street**

**Ft. Lauderdale, FL**

**Saturday 10 am - 5 pm**

**Sunday 10 am - 4 pm**

**Admission: \$6.50**

(50¢ off with this card)

**Special guests:** Barbara & Jim Mauzy  
*Authors of many books on Depression  
Glass & Vintage Collectibles*

**Directions:** I-95 to Sunrise Blvd. East,  
turn South on US 1 for 2 blocks

**Information:** 305-884-0335  
fboches@cheshirecatantiques.com

## NCC Study Groups and Reports:

The NCC has several study groups; these are the groups currently active and holding regular meetings. Listed below is contact information for these study groups.

If there is no study group in your area and you are interested in starting or joining a new study group, please contact NCC Study Group Advisor, Judy Rhoads at [kjrhoads@aol.com](mailto:kjrhoads@aol.com).

### #13 - Miami Valley Study Group

*Miami Valley area, Ohio*  
Larry Everett  
[db0098@dragonbbs.com](mailto:db0098@dragonbbs.com)  
(937) 675-6491

### #14 - The Cambridge Cordials

*Cambridge, Ohio*  
Lorraine Weinman  
[blweinman@hotmail.com](mailto:blweinman@hotmail.com)  
(330) 966-9376

### #15 - North Texas Cambridge Study Group

*Dallas area, Texas*  
Scott Pierce  
[scottpierce1@msn.com](mailto:scottpierce1@msn.com)  
(817) 427-9510

### #16 - Elegant Glass Collectors

*PA & NJ*  
Bill Dufft  
[billnvon@aol.com](mailto:billnvon@aol.com)

### #17 - The Columbus Wildflowers

*Columbus, Ohio*  
Barbara Wyrick  
[bwyr@ee.net](mailto:bwyr@ee.net)  
(614) 291-0361

### #20 - South Florida Study Group

*Miami, FL*  
Linda Gilbert  
[rosepointbabe@aol.com](mailto:rosepointbabe@aol.com)

### #21 - Crazy 'bout Cambridge Study Group

*Indiana*  
Beth Sarchet  
[bethsarchet@bluemarble.net](mailto:bethsarchet@bluemarble.net)

### Study Group #14 The Cambridge Cordials

On Saturday, September 22, 2007, the Cambridge Cordials Study Group was on the road in Akron, OH, with the meeting held at the home of Jack and Elaine Thompson. In attendance were the following members: Mike and Cindy Arent, Rich Bennett, Sharon Miller, Jill Ross, Mike and Lisa Strebler, Jack and Elaine Thompson, Mark Votaw, Lorraine Weinman and Lynn Welker.

Over a delicious dinner many stories were shared, particularly about Cambridge glass finds – from homes, shows and stores to on Ebay. Jack and Elaine shared their collection with wonderful memories regarding special pieces and how they had made their ways into their collection.

The year ahead for the study group was outlined and discussions of meetings lead to a tentative calendar of events.

October 20 – work will begin on the NCC Museum float for the Cambridge Holiday Parade

November 24 – meeting after Parade – joint area study group meeting is tentatively planned

December 15 – to be announced

January 19 – work session at the Museum

February 16 – work session at the Museum

March 15 – meeting at the home of Joe and Sharon Miller

April 19 – to be announced

May 17 – to be announced

June 26, 2008 – Arent picnic

September 20, 2008 – “On the Road” meeting at the home of Mike and Lisa Strebler

There was a discussion of the after-season Museum hours and our participation in the Dickens Victorian Village activities. Cindy shared the progress on the Dickens figures and described the “Glass Blower” scene. Besides special tours and an Open

House, the Museum will be open to the public from noon to 4:00 p.m. on weekends beginning with November 24 and ending on December 16, 2007. Some discussion followed regarding plans for the Open House.

The evening ended with a Show and Tell Session which included: a Pristine tray/tort plate (in the '49 catalog) with the La Flo cutting “Bittersweet”; a 3900 candy bottom with Wheat cutting; a 555 round plate with Harvest cutting; an old Cambridge arms candlestick and peg Pristine relish with a floral cutting on it; a blown peg nappy with an applied pressed peg; a two-piece cigarette set in light emerald (in the '27 catalog); a big bevel-edged Ebony cigarette box done with gold; a car candy container (with curtains in the 4 windows on the side, headlights that make a “Y” instead of pointing straight out, and 4 windows on the back); a Gold Krystol plain nameplate; a 1320 20-oz. cordial decanter, with Rockwell Silver and a Carmen handle and foot; a bitters bottle with the early “Tropical” Rock Crystal cutting, and a 3104 Elaine tall champagne.

It was a very pleasant gathering. Our next meeting will be on October 20 to begin work on the float.

— respectfully submitted by Lorraine Weinman



## NCC Study Group Reports (continued)

### Study Group #16 Elegant Glass Collectors

On September 22<sup>nd</sup>, 2007 The Elegant Glass Study Group met at the home of Millie and Roger Loucks in Lincoln Park, New Jersey.

The attendees were Alex Wolk, Myrle Scott, Ken and Jane Filippini, Joanne Berringer, Loretta Weeks, Bill and Yvonne Dufft and Paul and Gail Duchamp.

It had been awhile since we all met so once our socializing was over we started the meeting discussing ways to recruit new members.

We also talked about things that would have more structure and learning about Cambridge glass to our meetings.

We collected dues then went on to discuss our upcoming fundraiser.

Our program was "Best Buys" of the summer and/or what we bought at the Cambridge Convention. What a display of breathtaking glass all in one place.

We snacked on appetizers as we discussed our best buys of the summer and Cambridge pieces starting with Loretta's spectacular buys. She displayed three beautiful Crown Tuscan vases. The first was a #1298 Chintz Lace 13" vase from the 30-34 catalog, then another #1298 13" vase with D/ Lace decorate D/100 7-8. This decorate itself may be found in one color enamel while the rim of the piece may have a different color. The last Crown Tuscan vase was a 12" #402-12, from 30-34 catalog. She also had a very nice crystal ball jug with sterling floral design, two advertising signs made of wood, one Rosepoint and the other Wildflower. What wonderful additions to her collection.

Bill and Yvonne had a multitude of items to delight us with including a Crown Tuscan 10" 3-footed Seashell Line with Rockwell Sterling seahorse decoration and trim, Crystal 3400/647 Candelabras with Decagon foot and Rock Crystal cutting. A gorgeous set consisting of an emerald green 10" #30 Special Article Bowl and 9 1/2" #437 candlesticks with Sponge-etch treatment and gold-encrusted band etching (unknown). Next was a Larosa

6" 2-lite #72 Caprice candlestick and a stunning Helio 9 1/2" #1273 candlesticks with gold-encrusted #2011 border etching. He went on to show an exquisite Peach-blo 7 1/2" #17 Centennial Line fan vase with Willow band etching and last by not least a magnificent Royal blue/Cobalt 8" #1431 bulb vase. Yvonne showed us an amethyst Tally-ho #1402/35 12 oz. Stein, perfect for a cold beer.

Ken and Jane were next with all their newly acquired items. First up an elegant French dressing bottle engraved Oil & Vinegar #1263 in Amber from 1924. Right in time for Thanksgiving a gorgeous Turkey #1222 in emerald green. Jane had a very special Everglades #38 11" fld. vase in Moonlight Blue from a dear friend. Ken continued with an extraordinary Arcadia #165 covered candy in Violet from 1955-1958 and a pair of Carmen Keyhole Candlesticks with Rosepoint D1041 Gold encrusted, were they ever beautiful. Next was a very impressive Tally-Ho #1402-24 9 1/2" Dinner plate in Carmen with an unusual Rockwell Sterling design. Lastly #704 bowl in Dianthus pink with Cleo etch that held a flower block.

Alex had some grand items including an Optic and Wildflower bud vase in Mocha, a 5 pt relish in Pristine with Harvest cutting, a Weatherford center handled server in Amber and a 3 part #3500 relish Gadroon with Elaine etch. Gail had her Glass Dash buy. A striking Emerald Vase with a Strafford design. This Vase was from the early 20's.

After all our glass was shown we settled down to a delectable meal Millie and Roger had planned for us. We ate, drank and caught up on all the news from the summer.

Over dessert we continued to chat and the meeting concluded with a plan to meet at Loretta Weeks for our annual Christmas Get together on December 8<sup>th</sup> in Pennsylvania.

Respectfully submitted,  
Gail Duchamp, Secretary



### Study Group #17 The Columbus Wildflowers

On Thursday, October 4, 2007, the Wildflowers met at the home of David Ray at 7:00 pm. David had set up a very impressive table of #3011 "Statuesque Line" Nude Stems, and study group members added to the display. David then presented a fabulous program on "Cambridge Nudes," which included a very comprehensive Spread Sheet of each Nude item correlated with known colors. (See the end of our minutes, where we will share David's Spread Sheet with the members).



*Host David Ray in discussion with Bill*

Nudes first appeared in the 1930-34 catalogue, shown in 22 different designs. In the 1940's catalogue, there were 6 additional items. The line, however, was greatly reduced during the 1940's, and only a few items were being produced by the closing of the factory.

We studied the various decorations known to exist on Nudes. These include 11 Etchings, plus the frosting of the stem and foot; a variety of



## NCC Study Group Reports (continued)

Enamels such as Black, Green and Red trim lines on Crown Tuscan, Yale and Canadian Club logos, and the Charleton decorations; Silk Screening seen on Crown Tuscan comports, ashtrays, short cigarette boxes and candlesticks; a variety of Rockwell Silver Overlay decorations; Crackle treatment done only during the Reopen Period; and two known Cuttings (#611 and #639).

There are three sizes of the nude stem. Examples of the shortest are seen on the short comports and wines, the medium on the claret and the largest on the Banquet goblets. In general, the bigger the bowl top, the larger the nude stem.

We looked at and compared our items on display to note and study the differences. We saw an "Odd Green" color of bowl, seen only on Brandies and Cocktails that were sold in sets, that seems to have a hint of blue in it, and may have been an attempt at a more "Jazzy" color to replace the green in the Harlequin sets.

The Wine is much like the Cocktail but with the bowl shape of the Claret. These are hard to find in any color, and are sometimes seen listed as Cocktails. We also looked at the variety of Cocktails, which included the regular, the #3126 Tulip and #3122 "V". Of the Cocktails with Crown Tuscan nude stems, the Gold Krystol with optic and Topaz bowls are some of the hardest to find.

The Cordial, when compared to the Brandy, are both small, but the Cordial has the more bulbous top (the #3104 bowl), and the Brandy top is taller. The Hock also has the #3104 bowl and looks like a BIG cordial. These are also very hard to find. But, probably one of the hardest nudes to find is the Roemer, which looks very much like the Hock but is a bit smaller (5 oz compared to the 6 oz Hock). The Sauterne has a very unusual, rather vertical shaped bowl; and the Champagne and bottom of the Sweetmeat look like the Ivy Ball cut in half. (Some have married the Champagne bottom and the 4" Puff Box lid to make the Sweetmeat, but we think

there are subtle differences in the actual Sweetmeat). The Table Goblet (water goblet) and Banquet Goblet both use the same bowl, but the difference is the size of the nude stem (the Banquet Goblet is on the tallest nude).

Nude Stem Ashtrays were made for many years, and the difference in the Tall and Short Cigarette Box is again the size of the nude. Lids are also seen in two styles – both beveled and polished or just pressed.

The Bud Vase is an early pastemold vase atop a nude stem, and the Covered Candies came open or closed (everyone seems to desire the lid). The Cupped Comport comes on both tall and short stems, but the short stem was produced very late (in the reopen period) and cannot be found in Cobalt Blue (which was not in production in the reopen years). The Flared Comport has the same top (just flared out) and only comes on the tall stem. The Shell Comports in Crown Tuscan always have a detailing in the shell, but Crystal ones come both ways, with or without detailing.

Crown Tuscan Nude Candlesticks changed in the later years to be produced using less labor, which entailed leaving the woman's right arm filled in with glass and the candle cup with less of a petal flare and more straight paneled sides. So, you can tell an earlier production item from the later ones. And, on the Candlestick used with Arms and Budvases, the correct way to hang the center bobèche is actually upside down.

The final thing we looked at were the Ebony stem Cocktails and how to tell Cambridge from Imperial (the Amber stems are always Imperial). By the time Imperial got the molds, some of the detailing was not as clear (for example fingers on the nude's hands and belly buttons may be smooth).

So Imperial's are not likely to have such details, but later Cambridge nudes may not either. When held bowl to bowl, the Imperial bowl seems a bit larger and thicker. Also, when you look at the connection of the stem to the bowl, a black circle seems to float unattached in the Cambridge nude, where it seems to be totally connected in the Imperial. (See attached picture where we tried to show this difference). But we also concluded that prices between the two are very similar, so for many, it may not matter.

After our exciting and informative program, David served some wonderful refreshments (including homemade Blackberry Cobbler), and we had our Business Meeting to review where we stand on projects to help raise money for the club.

Our meeting ended with Show and Tell which included: a Crystal Ice Bucket with cutting; Carmen Tally Ho Low Comport; Amber optic Fan Vase etched Cleo; Light Emerald Bud Vase etched Dresden Rose; Ivory Bowl with Blue Enamel Willow; Pink Luncheon Plate with unknown dancing lady etch; and Crown Tuscan Flying Lady Bowl.

Our meeting adjourned at 10:30 pm. The Wildflowers will not meet next month due to the quarterly meeting in Cambridge, and will next meet December 6<sup>th</sup> at the home of Rose MacConkey for our annual Christmas party.  
—respectfully submitted by Barbara Wyrick, Secretary





# Cambridge Nude Stem Chart



STEM	crystal	carmen	royal blue	amber	mocha	amethyst	forest green	dark emerald	pink	pistachio	tahoe blue	topaz	moolight blue	gold krystal	mandarine gold	smoke	ebony stem	crown tuscan	funny green	heather bloom	windsor blue
3 oz. cocktail - CT stem		X	X	X		X	X				X		X	X							
3 oz. cocktail - short	X	X	X	X	X	X	X	X	X	X	X	X	X	X	X	X	X		X		
3 oz. cocktail - tall		X			X*			X*	X						X	X					
4.5 oz. claret	X	X	X	X		X	X	X			X		X	X*						X	
1 oz. Brandy	X	X	X	X	X	X	X	X	X	X	X		X	X	X				X	X	
3 oz. wine	X	X	X	X		X	X				X		X*								
1 oz. cordial	X	X	X	X	X*	X	X						X*								
6 oz. hock - short	X	X	X	X		X	X				X										
6 oz hock - tall											X										
5 oz roemer	X	X	X	X		X	X				X										
3 oz. cocktail #3126	X	X	X			X	X				X										
3 oz. cocktail #3122	X	X	X	X		X	X						X								
4.5 oz. sauterne	X	X	X			X	X				X										
champagne	X	X	X	X		X	X	X	X			X	X*	X	X						X
table goblet	X	X	X	X		X	X	X	X	X			X	X	X						X
banquet goblet	X	X	X	X		X	X						X								X
covered sweetmeat	X	X	X	X		X	X						X*								X
ash tray	X	X	X	X	X*	X	X	X	X	X	X*	X	X	X	X			X			
cigarette box - short	X	X	X	X		X	X	X					X					X			
cigarette box - tall	X	X	X	X		X	X	X					X								
cigarette holder	X	X	X	X		X	X						X*								
bud vase	X	X	X	X		X	X						X*								
mint dish	X	X	X	X		X															
ivy ball	X	X	X	X	X	X	X	X	X	X			X*		X		X				
blown comport	X	X	X	X		X	X														
blown covered candy	X	X	X	X		X	X														
cupped comport - short		X							X	X		X		X	X						
cupped comport - tall	X	X	X	X		X	X	X	X	X		X	X	X							X
flared comport	X	X	X	X		X	X	X					X	X				X		X	
shell comport - short	X											X						X			
shell comport - tall	X						X							X				X			X
candlestick	X	X	X	X		X	X						X	X				X			X
candlestick w/ bobèche	X	X	X			X	X											X			X
caprice ivy ball	X																				
Flying Lady Bowl	X	X	X	X		X	X					X						X			X

\* Unverified Items



# NCC Books for Sale

*Published by NCC • Members receive a 10% discount*

TITLE		<u>REGULAR PRICE</u>	<u>MEMBER PRICE</u>
<b>1910 NearCut Catalog Reprint</b>	108 pages, paperback with 2004 price guide	\$14.95	<b>\$13.45</b>
<b>2007 NearCut Value Guide</b>	(when purchased separately)	\$3.00	<b>\$2.70</b>
<b>1930-34 Catalog Reprint</b>	250 pages, paperback with 1997 price guide	\$14.95	<b>\$13.45</b>
<b>1930-34 Catalog Index</b>	Index for above	\$2.00	<b>\$1.80</b>
<b>1949-53 Catalog Reprint</b>	300 pages, paperback, no price guide	\$19.95	<b>\$17.95</b>
<b>1956-58 Catalog Reprint</b>	160 pages, paperback, no price guide	\$12.95	<b>\$11.65</b>
<b>Cambridge Colors II (New)</b>	Hardcover with price guide	\$19.99	<b>\$17.99</b>
<b>Caprice</b>	200 pages, paperback with 2003 price guide	\$19.95	<b>\$17.95</b>
<b>Caprice Value Guide</b>	(when purchased separately)	\$5.00	<b>\$4.50</b>
<b>Decorates</b>	136 pages, paperback, no price guide	\$14.95	<b>\$13.45</b>
<b>Etchings (2nd Edition)</b>	102 pages, paperback, no price guide	\$17.95	<b>\$16.15</b>
<b>Etchings, Non-Catalogued</b>	70 pages, paperback, no price guide	\$12.95	<b>\$11.65</b>
<b>Etchings: Blossomtime</b>	26 pages, paperback, no price guide	\$7.95	<b>\$7.15</b>
<b>Etchings: Candlelight</b>	30 pages, paperback, no price guide	\$7.95	<b>\$7.15</b>
<b>Etchings: Chantilly</b>	44 pages, paperback, no price guide	\$7.95	<b>\$7.15</b>
<b>Etchings: Diane</b>	53 pages, paperback, no price guide	\$7.95	<b>\$7.15</b>
<b>Etchings: Elaine</b>	64 pages, paperback, no price guide	\$9.95	<b>\$8.95</b>
<b>Etchings: Portia</b>	57 pages, paperback, no price guide	\$7.95	<b>\$7.15</b>
<b>Etchings: Wildflower</b>	42 pages, paperback, no price guide	\$7.95	<b>\$7.15</b>
<b>Rock Crystal Engravings</b>	119 pages, paperback, no price guide	\$17.95	<b>\$16.15</b>
<b>Rock Crystal Engravings (Listings)</b>	Companion to above; lists all pieces in all patterns	\$9.95	<b>\$8.95</b>
<b>Rock Crystal 1940 Illustrated Catalog &amp; Price List</b>		\$14.95	<b>\$13.45</b>
<b>Rose Point - Second Edition</b>	146 pages, paperback with 2007 price guide	\$19.95	<b>\$17.95</b>
<b>Rose Point Value Guide</b>	(when purchased separately)	\$5.00	<b>\$4.50</b>

### How to Order by Mail or from the NCC Website

Send orders to:

NCC • PO Box 416 • Cambridge, OH 43725

OHIO RESIDENTS PLEASE ADD 7% SALES TAX

Please include your name, complete mailing address and your phone number or e-mail address.

Payments by check or Money Order only, payable to NCC.

Books may also be purchased on the NCC website, [www.cambridgeglass.org](http://www.cambridgeglass.org) in the Members-Only Section, User Name: NCC, Password: CarmeN (case sensitive). *Major Credit Cards are only accepted for web purchases.*

### SHIPPING/HANDLING:

All items (including books) **except** Scottys:

<b>Total order up to \$6</b>	<b>\$3.50</b>
<b>\$6.01 to \$25.00</b>	<b>\$6.50</b>
<b>\$25.01 to \$50.00</b>	<b>\$7.50</b>
<b>\$50.01 to \$75.00</b>	<b>\$8.50</b>
<b>Over \$75.00</b>	<b>\$11.50</b>

### Answers to Last Month's Abbreviation Quiz

- G.S. - Glass Stopper
- M.V. - Mount Vernon
- M.W. - Martha Washington
- Ch.- Chromium
- S. - Silver
- D.- Decorate
- En.- Engraved
- C. - Cut
- D.P.E. - Deep Plate Etched
- P. E. - Plate etched
- W/ - With
- R. C. E. - Rock Crystal Engraved
- G. C. Gray Cut
- C. E. Copper Engraved
- C.& P. Cut and Polished
- Cent - Center
- J.S. - Jigger Stopper
- Diam. - Diameter
- N. C. - Notched Cover
- OFC - Old Fashioned Cocktail

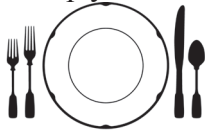
# Seasons Greetings

# Stems Without Thorns

As the world's largest supplier of old & new china, crystal, silver and collectibles, Replacements, Ltd. has more than 1,200 different patterns of Cambridge crystal.

And however much we enjoy selling pieces that were once thought irreplaceable, we love buying them as well. Thanks to people like you, our crystal inventory currently numbers in the hundreds of thousands, and the numbers keep growing every year.

So, if you've been unsuccessfully searching for that elusive piece of Cambridge — or any other type of fine crystal — call us for a free list of pieces available in your pattern. And, if you're looking to sell pieces you currently have, we can help you there, too.



**REPLACEMENTS, LTD.**  
China, Crystal & Silver • Old & New

**1-800-REPLACE**  
**(1-800-737-5223)**

1089 Knox Road  
PO Box 26029, Dept. CB  
Greensboro, NC 27420  
[www.replacements.com](http://www.replacements.com)

**Classified Ads - Reach over 1,000 avid collectors of Cambridge Glass**

## Advertising Rates:

1/8 page \$15      1/4 page \$20  
1/2 page \$30      Full page \$50  
(plus \$5 per photograph)

Electronic submissions should be emailed to [ncccrystalball@charter.net](mailto:ncccrystalball@charter.net). Use Word or PageMaker. Mailed submissions and all payments should go to PO Box 416, Cambridge, OH 43725. Deadline is 10th of preceding month. Ads must be paid in advance. *Show listings are FREE; send info to PO Box or e-mail address 60 days before event.*



**Dealer Directory - \$24 for 12-months, size limited by box (see below). Includes listing on NCC website.**

### Remember...

When writing to these dealers, please include a self-addressed, stamped envelope.



## DEALER DIRECTORY



THE DEGENHART PAPERWEIGHT AND GLASS MUSEUM, INC.

P.O. Box 186  
Cambridge, OH 43725-0186

Intersection of US 22 & I-77  
Phone 740-432-2626

Dee and Tony Mondloch  
Phone: 850-747-8290 [glass01@knology.net](mailto:glass01@knology.net)  
1609 Clay Ave. Panama City, FL 32405

### Precious & Few

Tiffin and Duncan & Miller Glassware,  
Other Elegant Glass, Antiques, Collectibles  
**Shop: [www.apreciousfew.com](http://www.apreciousfew.com)**



**YOUR AD COULD BE HERE  
REACH THOUSANDS OF  
COLLECTORS  
ONLY \$24 PER YEAR**



### Deborah Maggard, Antiques

Specializing in Cambridge Glass,  
American Hand-Made Glass & Victorian Art Glass

We buy one piece or entire collections.  
Please contact me at 440-247-5632  
[debbie@deborahmaggardantiques.com](mailto:debbie@deborahmaggardantiques.com)

P.O. Box 211 • Chagrin Falls, OH 44022

### SCOTTY'S ANTIQUES

Elegant Glassware of the Depression Era  
Mainly Cambridge and Florence Ceramics  
Retirement: Selling all inventory  
at reduced prices

John & Peggy Scott  
Scotland Ridge Farm  
PO Box 1001  
Aurora, MO 65605

(417) 678-0624  
[scottjnp@gmail.com](mailto:scottjnp@gmail.com)



John **Burlingame** Betty

Visit our booth (B-6) in  
**DELILAH'S**

301 1st Street Sanford, FL 32771  
Antiques, glass, pottery, collectibles, etc.  
cell 386-212-7121 tel 407-330-2272

### Max Miller

Elegant Glassware • Books • Fiesta  
...and more

THE MARKET PLACE  
(713) 467-0450 - BUS 10910 OLD KATY RD.  
(713) 461-1708 - RES HOUSTON TX 77043  
[MMXGLASS@aol.com](mailto:MMXGLASS@aol.com)

### VIRTUALATTIC AT THE GLASS CHALET

SPECIALIZING IN ELEGANT DEPRESSION ERA GLASS

Sandra L. Bridwell-Walker PO Box 3448  
**William P. Walker** Cleburne TX 76033-3448  
Phone: 817-202-0940  
Sandy's Cell: 817-559-0328  
Bill's Cell: 817-357-7084  
[www.virtualattic.com](http://www.virtualattic.com)  
[virtualattic@sbcglobal.net](mailto:virtualattic@sbcglobal.net)  
[theglasschalet@sbcglobal.net](mailto:theglasschalet@sbcglobal.net)



# DEALER DIRECTORY



When writing to these dealers, please enclose SASE

**Daugherty's Antiques**  
**Jerry and Shirley**  
 Antiques & Collectibles-Mostly Glass

[www.daughertys-antiques.com](http://www.daughertys-antiques.com)  
 email: sdaugh2515@daughertys-antiques.com

Shows & Mail Orders 2515 Cheshire North  
**402-423-7426 (evenings)** Lincoln, NE 68512

**Milbra's Crystal** Buy & Sell

Replacement and Matching  
 Milbra Long (817) 645-6066  
 Emily Seate (817) 294-9837  
 PO Box 784  
 Cleburne TX 76033

E-mail: longseat@sbcglobal.net  
[www.fostoriacrystal.com](http://www.fostoriacrystal.com)

*Specializing in  
 Cambridge,  
 Fostoria, Heisey  
 and others*

**THE GLASS URN**

456 West Main Street, suite G  
 Mesa, AZ 85201 480-833-2702  
 480-838-5936

Mail Order Open Shop

CAMBRIDGE, FOSTORIA, HEISEY, etc.

**ALADDIN LAMP BOOKS**

Kerosene Lamps 1884-1940  
 New book 2007  
 Bill & Treva Courter  
 brtknight@aol.com  
 3935 Kelley Rd. Phone 270-488-2116  
 Kevil, KY 42053 FAX 270-488-2119

Fostoria Glass Society of America  
 Traveling Ambassadors  
**Ralph & Joyce Rider**

For info: 817-545-5856  
 E-mail: r.rider@sbcglobal.net

**B&H ANTIQUE MARKETPLACE**  
 3739 Highway 29 North  
 Danville, VA 24540  
 (434) 836-4636

Cambridge • Heisey • Duncan • Fostoria  
 Open Thur-Sat 11:00 to 5:00 (Seasonal hours apply)

**Glass Menagerie Antiques**  
 Your Website for quality Glass from  
 the 20's, 30's, 40's & 50's.  
[www.glasstresurechest.com](http://www.glasstresurechest.com)

**BAKER FAMILY MUSEUM**  
 805 CUMBERLAND ST.  
 CALDWELL, OHIO 43724  
 740-732-6410

bakermuseumnellbaker@msn.com

Wed & Thurs 9-4; Fri - Sat 9-5

**CRYSTALLINE COLORS**  
 Cambridge • Fostoria • Elegant Glass

Riverfront Antique Mall  
 New Philadelphia, OH (I-77, exit 81)  
 Booth #'s 626 and 616

Lynne R. Franks 216-661-7382

**CRYSTAL LADY**

1817 Vinton St. Omaha, NE 68108  
**Bill, Joann and Marcie Hagerty**  
 Shop 402-341-0643 Home 402-391-6730

Specializing in Elegant Glass & Collectibles  
[www.crystalladyantiques.com](http://www.crystalladyantiques.com)

**Storck's Antiques**  
**Rick & Joyce**  
 Antiques & Collectibles  
 Fenton, Imperial, Heisey & Cambridge  
 Storck1@aol.com (763-477-6415)  
 Booth 11 & 12 in the Antique Mall  
 12820 Main Street, Rogers, MN

 **Mother Drucker's**  
**Penny Drucker**  
 Specializing in Elegant Glassware  
 Shows & Mail Order

PO Box 18087 (775) 851-7539  
 Reno, NV 89511 (888) MDRUCKER  
[www.motherdruckers.com](http://www.motherdruckers.com)



**GLASS FROM THE PAST**  
 Maureen Gillis



[www.glassfromthepast1.com](http://www.glassfromthepast1.com)  
 email: maureen@glassfromthepast1.com

**JUDY'S ANTIQUES**  
 Judy Bennett  
 422 S. Ninth Street (corner of Jefferson)  
 Cambridge, Ohio 43725

Business (740) 432-5855  
 Residence (740) 432-3045  
**CAMBRIDGE GLASS MY SPECIALTY**

**Cherished Collectibles**  
 Shopping 24 hours in our online store  
 Glassware, Figurines, Collectors' Plates

[www.cherished-collectibles.com](http://www.cherished-collectibles.com)  
 Elegant and Depression Era Glass

Mon. thru Sat. 10 - 5:30 • Sunday 12 - 5:30

**Bogarts' Antiques**

BUY • SELL • APPRIASE • REFINISH • CANE & REED CHAIRS  
 CLOCK REPAIR

Jack & Sharon Bogart ST.RT. 40  
 740-872-3514 shop 7527 EAST PIKE  
 740-826-7439 home NORWICH, OHIO  
 43767

[BOGARTSANTIQUES@CORE.COM](mailto:BOGARTSANTIQUES@CORE.COM)

**GREEN ACRES FARM**  
 2678 Hazelton Etna Rd.  
 Pataskala, OH 43062  
 (State Route 310 North)

Sat & Sun 1-7 pm 740-927-1882  
 Antiques, Crystal Glass & Collectibles

**THE GLASS HOUSE ANTIQUE MALL**  
 Furniture, Pottery, Glass  
 Antiques and Collectibles  
 I-70 Exit 146, East on SR 40

8825 E. Pike  
 Norwich OH 43767 TEL 740-872-3799

**GATEWAY ANTIQUE MALL, INC.**  
 JUST NW OF MINNEAPOLIS-ST.PAUL, MN  
 Next to Super 8 in Rogers, MN  
 (I-94/101 intersection)  
 Multi-Dealer  
 7 days; 10am - 6pm • 763-428-8286  
 Tera & Jim Marsh, Owners  
[www.gatewayantiquemall1.vpweb.com](http://www.gatewayantiquemall1.vpweb.com)

**ISAACS ANTIQUES**  
 (740) 826-4015

See our booths in Penny Court Mall in  
 Cambridge and at White Pillars Antique Mall  
 (Route 40, one mile west of  
 I-70 Norwich, OH • Exit #164)

**PENNY COURT MALL**  
 637 Wheeling Avenue  
 Cambridge, Ohio  
 100 Booths 15,000 sq ft

HOURS: Daily 10-6 Sunday Noon-5  
 Closed: Easter, Thanksgiving, Christmas

Call for other holiday hours 740-432-4369

**MARGARET LANE ANTIQUES**  
 2 E. Main St. New Concord, OH 43762  
 Lynn Welker (740) 826-7414

Cambridge Glass Matching Service  
 Hours: Mon-Fri 10-12 AM, 1-5 PM  
 or by appointment

 **ur House Antiques**  
 Linda & David Adams  
 Las Vegas, NV

702-838-1341 or  
 800-357-7169

Web: [www.OurHouseAntiques.com](http://www.OurHouseAntiques.com)  
 E-mail: David@OurHouseAntiques.com



# Scotty Dog Bookends

## ***Frosted Cobalt***

*Order Now...approximately  
10 pairs available*



**\$110/pair  
Plus \$12 shipping &  
handling; sales tax if  
applicable.**

## ***Cobalt***

*Supplies are running out fast,  
approximately 10 pairs left*



**\$100/pair  
Plus \$12 shipping &  
handling; sales tax if  
applicable.**

## ***Crystal Opalescent***



**\$100/pair  
Plus \$12 shipping &  
handling; sales tax if  
applicable.**

**Send orders to:**

**NCC • PO Box 416 • Cambridge, OH 43725**

**OHIO RESIDENTS PLEASE ADD 7% SALES TAX**

**Please include your name, complete mailing address and your phone number or e-mail address.**

**Payments by check or Money Order only, payable to NCC.**

National Cambridge Collectors, Inc.  
PO Box 416  
Cambridge OH 43725

website: [www.cambridgeglass.org](http://www.cambridgeglass.org)  
e-mail: [ncccystalball@charter.net](mailto:ncccystalball@charter.net)  
(not for address changes, please)

**FIRST CLASS MAIL**