



# Cambridge Crystal Ball

Published monthly (except July) by National Cambridge Collectors, Inc. to encourage and report the discovery of the elegant and boundless product of the Cambridge Glass Company of Cambridge, Ohio

Issue No. 405

March 2007

## The Frosted Cobalt Scotties are here!



An initial offering of Scotty Dog Bookends in Frosted Cobalt (Royal) Blue has been authorized by the NCC Board of Directors. These dogs are being produced by Mosser, using the original Cambridge molds. Proceeds will benefit the National Museum of Cambridge Glass. These beautiful additions to your collection are now available and can be obtained by sending your orders to NCC, PO Box 416, Cambridge, OH 43725. They are a great value at \$110 per pair plus \$12 shipping and handling and sales tax if applicable.

Refer to Page 16 for Ordering Information

***"But the one thing we do know is that we want our collection to continue to grow,  
and we want to be like the Cambridge Museum when we grow up!"  
Kudos to the Club and Museum - article on pages 14 and 15***

**CONVENTION 2007: June 28 thru July 1 (5th June Weekend) - Make your plans and mark your calendars**

# National Cambridge Collectors, Inc.

PO Box 416 Cambridge, OH 43725-0416

## Membership

**Patron: Single \$22; with 1 Associate \$25**

*·Additional Associate memberships are available at \$3 each.*

**Benefactor - Century: \$100**

*·Includes membership for Master Member and unlimited Associate Members, plus Century Club membership for Master Member.*

**Benefactor - Mardi Gras: \$200**

*·Includes membership for Master Member and unlimited Associate Members, plus Century Club membership for all members (limit of two plaques in Museum).*

**Benefactor - Japonica: \$500**

*·Includes membership for Master Member and unlimited Associate Members, plus Century Club membership for all members (limit of two plaques in Museum).*

**President's Circle: \$1,000**

*·Includes membership for Master Member and unlimited Associate Members, plus Century Club membership for all members (limit of two plaques in Museum). Also includes Convention registration for two adults and one copy of each new NCC book upon publication.*

\*\*\*\*\*

*Associate Members must be at least 18 years of age and live in the same place of residence as the Master Member. Associate Members have full voting rights, but do not receive an additional copy of the newsletter.*

**Address Changes**  
Please send address changes to:  
Membership - NCC  
PO Box 416  
Cambridge, OH 43725  
or by e-mail to:  
cambridge@charter.net

## Board of Directors

Linda Adkins	Cindy Arent	Shelley Cole
Larry Everett	Ken Filippini	Rick Jones
Sharon Miller	Mark Nye	David Ray
Mike Strebler	Lorraine Weinman	Lynn Welker

## Officers & Committee Chairs

President	Rick Jones
Vice-President	Ken Filippini
Secretary	David Ray
Treasurer	Mike Strebler
Sergeant-at-Arms	Larry Everett

Acquisitions Committee	Lynn Welker, Chairman
Archives Committee	Mark A. Nye, Archivist
Budget & Finance Committee	Mike Strebler, Chairman
By-Laws Committee	Alex Citron, Chairman
Crystal Ball	Helen Klemko, Executive Editor
Endowment Committee	Rick Jones, Chairman
Facilities Committee	Carl Beynon, Chairman
	Joe Miller
Grants & Fundraising Committee	Sharon Miller, Chairman
	(vacant)
Long-Range Planning Committee	Linda Adkins, Chairwoman
Membership Committee	Freeman Moore, Development Chairman
Museum Committee	Cindy Arent, Chairwoman
Nominating Committee	Ken Filippini, Chairman
November Program Committee	David Ray, Chairman
Projects Committee	Bill Hagerty, Chairman
Publications Committee	Mark A. Nye, Chairman
Publicity Committee	Lorraine Weinman, Chairwoman
Study Groups	Judy Rhoads, Advisor
Technology	David Adams, Webmaster
	Alex Citron, ebay Store
Auction Committee	Dorothy Rieker
	Squeek Rieker
	Lynn Welker
Convention Committee	Shelley Cole, Chairwoman
Glass Show & Sale	Mary Beth Hackett, Co-chairwoman
	Joy McFadden, Co-chairwoman
Glass Dash	Larry Everett, Co-chairman
	Susan Everett, Co-chairwoman
Books & Merchandise Fulfillment	Linda Adkins

## National Museum of Cambridge Glass



Located at 136 S. 9th Street in  
downtown Cambridge, OH  
Closed for the season.  
**SEE YOU IN APRIL**

## Contacts

NCC Museum [open April thru October only]  
(phone)..... (740) 432-4245  
(fax)..... (740) 439-9223

Rick Jones, President.....e-mail: Caprice0@aol.com  
David Ray, Secretary.....e-mail: westvillesh@hotmail.com  
Helen Klemko, Crystal Ball Editor e-mail:cambridge@charter.net



# President's Message

## *Makin' Friends Along the Way*

Cindy and I were really starting to develop the collecting bug.

It was this introduction to the national glass show circuit that propelled our collecting and initiated the lifelong bond that we will have with glass collectors the rest of our lives. While collecting glass is fun, down right exhilarating at times, it has been the chance to meet so many unique and wonderful people along the way.

It is this chemistry between glass and people that keep me motivated to be so involved in NCC.

So back to Evelyn. She was sweet, endearing with a hint of an acerbic wit that added charm and personality. After my Mom passed away, my trips to Florida were a little less frequent but when I'd go to Sanford, I'd be reminded Evelyn was there and it was always a joy to sit down and chat. I've learned most of what I know about glass from having these touchpoints with people generous enough to share their knowledge and experiences.

It is this type of personal interaction that elevates the joy of collecting.

Millie and Bill Downing also deserve special recognition. They early on knew that hosting a smart show was about more than just having good dealers – it was about spreading education, knowledge and fellowship. For many years they had Gene Florence sell books, autograph them and share his vast knowledge about glass. They then generously allowed NCC, in the person of our great ambassador Fleur de Lys Healy, to sell books and spread the joy and knowledge of Cambridge Glass.

The Sanford show was one of the first, I think, to have a Friday night wine and cheese preview. For an advanced collector, it was worth the premium price to have first crack at the dealers' best stuff. But, it also tended to keep the crowd down and you again had a chance to visit with dealers, collectors

**Continued on page 13**

My road to Cambridge goes through Sanford, Florida.

This past week, Mark Nye told me that longtime member and glass dealer, Evelyn Knowles lost her battle with cancer. Any loss in our glass community is sad, but this one gave me particular pause.

I can't say I knew Evelyn very well, but I liked her a lot. We would meet every few years at one of the Sanford shows. Millie and Bill Downey host this twice a year show (September and January) in this small quaint town just outside Orlando in central Florida. It is just off Interstate 4 that links Tampa to Daytona Beach and passes towns Lakeland, Orlando and Deland.

Also along this road is Deltona where my mother and father had settled when they retired, moving to Florida from the Pittsburgh area. It was my Mom who discovered the Sanford Show when

## The Crystal Ball

PO Box 416 Cambridge, Oh 43725  
e-mail: cambridge@charter.net

### Staff

Executive Editor Helen Klemko  
Research Editor Les Hansen  
ebay Report John Peterson  
Advertising Manager Jeannie Moore  
Circulation Sharon & Joe Miller  
.....

An electronic version of this newsletter is available via e-mail Just contact us at [cambridge@charter.net](mailto:cambridge@charter.net) to start your free subscription. You will continue to receive the paper version as well.

**Dealer Directory** is \$24 for 12-months, size limited by box (see page 19). Includes listing on NCC website.

### Editorial Policy

Research materials submitted are subject to review by the Research Editor or other experts. All submissions are subject to editing for length, accuracy and conformity to norms of style, spelling, punctuation and grammar. No advertising will be accepted on behalf of candidates for NCC or other elected office, nor for or against any legislative matter before the NCC Board or membership.

Artwork must be submitted in electronic (jpeg, tiff or bmp) format, unless special arrangements have been made in advance with the editor. Photos must be minimum 300 dpi.

### Advertising Rates

1/8 page \$15                      1/4 page \$20  
1/2 page \$30                      Full page \$50  
(plus \$5 per photograph)

**Classified Ads:** 10 cents/word, with a \$2.00 minimum.

Electronic submissions should be emailed to [ncccrystalball@charter.net](mailto:ncccrystalball@charter.net). Use Word, PageMaker or Adobe PDF. Mailed submissions and all payments should go to PO Box 416 Cambridge OH 43725. Deadline is 10th of preceding month. Ads must be paid in advance. *Show listings are FREE; send info to PO Box or e-mail address 60 days before event.*

# **From the Editor's Desk - I wonder.....**

With the peak collecting season coming up fast, I am sure that everyone has made a statement along the lines: "I wonder what I will find this year", or "I would just like to find one special piece at the show". Does this sound familiar?

Do you have any interesting stories to share about finding that special piece in past seasons that you would like to share?

To get things "rolling", I would like to share a story that happened to us several years ago. We were going to a large show in Texas and had discussed what we would like to find. The morning of the show, my husband announced that he had had a dream the night before and was absolutely certain that we would find a Cambridge Mannequin Head at the show. I was somewhat skeptical, but sure enough we walked into the show and there it was. Dreams do come true!! The real trick was getting it back from Texas to South Carolina. Of course, this was a piece we were going to hand carry onto the plane for the trip, but scrutiny at the airport made us very nervous that something would happen. The item was wrapped in a blanket as it was very carefully put into the x-ray machine. The piece must also have surprised

the young man behind the monitor as he yelled to his partner, "Hey John, come and look at this head". We did retrieve the "Head" from the belt and continued our way home.

\*\*\*\*\*

On a different note - we are very privileged this month to have the very first item in our "Growing Up With Glass" column. Melissa Spangler's perspective is showcased on Page 12 of this month's Crystal Ball. I would be honored to receive contributions from all our young collectors letting the rest of us know how they feel about the glass we all love.

~~~~~

The Member's Spotlight article this month should bring to everyone's attention the need for all of us to be sensitive to everyone who visits the Convention each year. When Steve and I first came to the Convention (many years go), our perception was that the group was not inclusive to others from the "outside". It took a number of years before we felt accepted. It is understandable that we have developed friendships over the years, but we must not forget to share our time with others.



**Your Editor needs informational articles, tidbits, personal experiences, etc. for possible inclusion in the April issue of the Crystal Ball - please send to [ncccrystalball@charter.net](mailto:ncccrystalball@charter.net)**  
To allow sufficient time to prepare your Crystal Ball and send it to the printers in a timely fashion, **all contributions must be received by me no later than the 15th of the month.**  
Of course, I will receive your articles, etc. at any time.  
However, depending on space and cut-off date, they may appear in a later edition.

**SPRING  
DEPRESSION GLASS  
SHOW & SALE**

**FREEPORT RECREATIONAL CENTER**  
130 East Merrick Road, Freeport, LI, NY  
MAP ON REVERSE

**SATURDAY, MARCH 24, 2007 • 12:00 TO 6:00 PM**  
**SUNDAY, MARCH 25, 2007 • 10:00 TO 4:00 PM**

|                                                   |                                                                   |                                                                            |
|---------------------------------------------------|-------------------------------------------------------------------|----------------------------------------------------------------------------|
| Door Prizes<br>Reference Books<br>Special Display | <b>Grand Prize</b><br>Luncheon Set<br><b>OPALESCENT MOONSTONE</b> | Free Depression Glass<br>TD & Appraisal<br>Sunday Only<br>(Limit 6 Pieces) |
|---------------------------------------------------|-------------------------------------------------------------------|----------------------------------------------------------------------------|

DONATION \$6.50 WITH THIS FLYER - 2 FOR \$8.00 EACH

Sponsored By  
**The Long Island Depression Glass Society, Ltd.**  
For Information Call (516) 798-0492 Or Visit [www.lidgs.org](http://www.lidgs.org)

**Rosepoint  
Collector**

**Looking for  
Rare & Unusual  
Pieces**

**Call:**

**(888)470-7539**

# Winter News from the Museum

By Cindy Arent

January 20<sup>th</sup> was a busier than usual day at the Museum as 22 NCC volunteers arrived to assist with the cleaning of the display cases. Members worked in teams and much was accomplished! There are still many items on the checklist to be done before we open on April 1<sup>st</sup>. A few non-glass pieces in the Education Center need to be moved to the NCC storage building to allow space for a new display. This display will replicate the Paymaster's Office at The Cambridge Glass Company and will include many original pieces from the factory.

Tour groups are beginning to schedule Museum tours for 2007. In fact, we have a small group on March 3 during the annual auction. In addition to groups scheduling for the regular season, a tour company from Michigan has already booked a

Museum tour for December 9<sup>th</sup>, during the Dickens Victorian Village in downtown Cambridge.

We are also working on a grant to fund the printing of a museum field trip study guide, "The ABC's of Glassmaking". This activity book would also be for sale in the Museum Gift Shop.

The Museum has been officially nominated for the Eastern Ohio Development Alliance - Excellence Award by Debbie Robinson, Director of the Cambridge/Guernsey County Visitors & Convention Bureau. The EODA promotes economic growth in the Eastern Ohio Region and represents 16 counties. We sincerely appreciate Debbie's nomination. It is an honor to be considered for the award.



*Left to Right:*

**Kneeling** - Patrick Ross, Sharon Miller, Randall Ross, Cindy Arent, Lynn Welker, Kay Marchant, Linda Adkins, John Murrell, Carl Beynon

**Row 2** - David Ray, Susan Everett, Vicki Wollenhaupt, Judy Momirov, Squeek Rieker, Carol Murrell, Lorraine Weinman, Rich Bennett

**Row 3** - Larry Everett, Frank Wollenhaupt, Joe Miller, Dorothy Rieker, Mike Strebler, Sandi Rohrbough, Betty Sivard, Sharon Bachna, Jeff Ross  
Photo taken by Shirley Beynon



*Frank and Vicki Wollenhaupt with their dog, Dawson.*

# The Calendar

*If you know about any upcoming glass shows or other glass events, please pass the word on to us at least six to eight weeks before the show dates. These listings are free of charge.*

## NCC Events



### 2007 Convention

June 27-30, 2007

### August Quarterly Meeting

Saturday, August 25  
(tentative)

## Upcoming Glass Shows & Other Glass Events

**March 9-10:**  
Mountain Laurel Glass Show  
West Hartford, CT  
Call: (860) 643-5353  
E-mail: james.dwire@snet.net

**March 10-11:**  
20-30-40 Society's Show  
Northlake, IL  
Call: (847) 394-2491  
www.20-30-40society.org

**March 16-17:**  
Heart of America Glass Show  
Independence, MO  
Call: (816) 561-4439  
E-mail: dishbizz@aol.com

**March 24-25:**  
Upper Midwest DG Show & Sale  
Bloomington, MN  
Call: (651) 770-1567

**March 24-25:**  
Long Island DG Society Show  
Freeport, NY  
Call: (516) 798-0492  
E-mail: lidgs.org

**March 24-25:**  
Hillsboro Glass & Pottery Show  
Washington County Fairgrounds  
Hillsboro, Oregon  
Call: (503) 640-9122  
E-mail: coeran@aol.com  
www.pnwfa.org

**March 31- April 1:**  
Lincoln Land Glass & Pottery Show  
Springfield, IL  
Call: (217)546-4790 or (217)744-9828  
E-mail:  
margaret\_davis37@sbcglobal.net

**March 31- April 1:**  
Nutmeg DG Show  
Southington, CT  
Call: (860) 643-5353  
E-mail:james.dwire@snet.net

**April 28-29:**  
Rocky Mtn. DG Society Show  
Castle Rock, CO  
Call: (303) 772-5446

## OLD MORGANTOWN GLASS COLLECTORS GUILD

### MUSEUM OPENING

The Old Morgantown Glass Collectors Guild is proud to announce the Grand Opening, January 20, 2007, of its new museum located in the Seneca Center, formerly the historic Seneca Glass Factory, Suite No. 1, 709 Beechhurst Avenue, Morgantown, West Virginia. This museum was created to honor the skills of the glass workers who made the beautiful Morgantown glassware as well as to display some of their creations. While the emphasis will be on glass produced by the Morgantown Glass Company, glassware produced by nearby factories such as Seneca, Beaumont and Gentile Glass will also be prominently displayed.

The Museum will be open to the public Wednesday through Saturday 10 a.m. to 3 p.m. and Sunday 12 noon to 5 p.m. Travel through the galleries and view many examples of the glassware produced from 1899 through the elegant glass of the 1920's and 1930's to the vibrant colors of the 1950's and 1960's until the final closing of the factory in 1971.

For more information, be sure to visit the website at [www.oldmorgantown.org](http://www.oldmorgantown.org) or contact Leora Leasure at (412)217-2083.

## THE 20-30-40 GLASS SOCIETY OF ILLINOIS CHICAGOLAND'S ANNUAL DEPRESSION ERA GLASS SHOW AND SALE 8TH YEAR AT CONCORD PLAZA

### CONCORD PLAZA MIDWEST CONFERENCE CENTER

401 West Lake Street, Northlake, Illinois

**MARCH 10 & 11, 2007**

SATURDAY 20 a.m. - 5 p.m. and

SUNDAY 11a.m. - 4 p.m.

*Admission \$7 Per Person (\$6 with this ad, limit 2)*

### FREE PARKING WITH SHUTTLE BUS

HEISEY, CAMBRIDGE, FOSTORIA, IMPERIAL, FENTON,  
DUNCAN MILLER, PADEN CITY, TIFFIN,  
WESTMORELAND

CRYSTAL REPAIR - GLASS ID - REFERENCE LIBRARY -  
DOOR PRIZES

Information prior to show date: (708)636-7661

WEBSITE: [WWW.20-30-40SOCIETY.ORG](http://WWW.20-30-40SOCIETY.ORG)

# Study Group Reports

## **Study Group #17 The Columbus Wildflowers**

### **DECANTERS - Cambridge & Others**

On Thursday, February 1st, 2007, the Wildflowers met at the home of Ken and Jackie Nicol at 7:00 pm. Refreshments of warm artichoke dip, veggie, fruit and meat tray and homemade lemon cupcakes were served. Since we all wanted the recipe for the delicious dip, we thought we would include it in the minutes for everyone to enjoy.

**Two 14 oz cans of Artichoke Hearts**  
**8 oz Mozzarella cheese**  
**1 cup grated Parmesan cheese**  
**1 cup Mayo**  
**Drain the artichokes and chop into small pieces,**  
**mix in the other ingredients.**  
**Preheat oven to 350 and bake for 30 minutes.**

While we enjoyed the food and conversation, Ken shared with us what he uses to polish silver which had been recommended by some high end silver dealers. It is "Eagle One – Nevrr-Dull Wadding Polish" sold in hardware stores, and Ken demonstrated how easy it is to use.

We then began our program on "Pinch Decanters," and Ken Nicol gave us an informative handout. The first way to tell a Cambridge decanter is that Cambridge ALWAYS has 3-Pinches. Morgantown made the only 4-Pinch decanter. All the rest were either 2 or 3 Pinches. Other Companies who made 3-Pinches were Blenko, Bryce, Fostoria, Haig, Hocking, Louie, McKee and Paden City. You can also find 2-Pinches from Co-operative Flint, Fostoria, Louie, and Paden City, and the 2-Pinch always has a flat side.

Members brought items for identification and comparison, and as we looked at them, the Cambridge decanters truly stood alone. All of the

others were very similar to each other with thick, stubby necks (as we called it – the short, fat neck) with very large, prominent rims. Cambridge was the only one with a thin, elongated neck, and the Cambridge decanters were also taller and slightly broader. In comparison, it was as if everyone else copied each other, except for Cambridge. We studied elegant Cambridge decanters in Light Emerald etched Cleo on the outer sides with a star etch inside the pinches (pinch decanters from the 1920's were made

One of the other decanters was a Black Paden City 2-Pinch with silver Hunt Scene. It was virtually identical to the Louie, (maybe a fourth of an inch wider and eighth of inch shorter in size difference), except for the color. Almost all of the black and opaque 2-Pinch decanters made from 1935 to 1951 were made by Paden City. They also did a "Bubble Front" where the 3<sup>rd</sup> flat side of the decanter bowed out more like a bubble, and an interesting variation of a Zinc metal front placed over top of the glass.



in green, pink and amber); a solid Pink one; and an Ebony with silver overlay swans. The etched Crystal Pinch Decanters from the later years are always very hard to find, and later colors such as Carmen and Royal Blue often came in sets with pinched tumblers.

We looked at a Cobalt Blue decanter with silver overlay swans made by the W. Virginia Company of Louie, who made all of the 2-Pinch decanters in colors during the years of 1932 to 1942, but stopped their colors in 1942. The Louie pinch is very tight, and extremely pointed, almost like someone took a nail to form it. Louie used colors such as the rich blue.

McKee did not make any 2-Pinches, only the 3-Pinch decanters, and they were mostly done in opaques.

The Blenko 3-Pinch was a little shorter and very heavy. When we held an Amethyst one, you could tell it was much heavier and there was a lot of glass in the bottom.

As for pinch decanter stoppers, Paden City had 8 different variations, Blenko had 5 (that were actually all made by LE Smith in crystal), and we could only think of 4 for Cambridge - the octagon (which may not have been correct on the pinch decanters); the older, taller 6 sided one; the golf ball stopper; and the lined 3400 round stopper.

**Continued on page 8**

## Study Groups:

The NCC has several study groups; these are the groups currently active and holding regular meetings. Listed below is contact information for these study groups.

If there is no study group in your area and you are interested in starting or joining a new study group, please contact NCC Study Group Advisor, Judy Rhoads at [kjrhoads@aol.com](mailto:kjrhoads@aol.com).

### #13 - Miami Valley Study Group

*Miami Valley area, Ohio*  
Larry Everett  
[db0098@dragonbbs.com](mailto:db0098@dragonbbs.com)  
(937) 675-6491

### #14 - The Cambridge Cordials

*Cambridge, Ohio*  
Lorraine Weinman  
[blweinman@hotmail.com](mailto:blweinman@hotmail.com)  
(330) 966-9376

### #15 - North Texas Cambridge Study Group

*Dallas area, Texas*  
Scott Pierce  
[scottpierce1@msn.com](mailto:scottpierce1@msn.com)  
(817) 427-9510

### #16 - Elegant Glass Collectors

*PA & NJ*  
Bill Dufft  
[billnvon@aol.com](mailto:billnvon@aol.com)

### #17 - The Columbus Wildflowers

*Columbus, Ohio*  
Barbara Wyrick  
[bwyr@ee.net](mailto:bwyr@ee.net)  
(614) 291-0361

### #20 - South Florida Study Group

*Miami, FL*  
Linda Gilbert  
[rosepointbabe@aol.com](mailto:rosepointbabe@aol.com)

### #21 - Crazy 'bout Cambridge Study Group

*Indiana*  
Beth Sarchet  
[bethsarchet@bluemarble.net](mailto:bethsarchet@bluemarble.net)

## ***The Columbus Wildflowers***

*(Continued from page 7)*

We talked of how West Virginia led the world in glass production in the early 1900's, with companies like Dugan, Louie, Fenton, Blenko and Central (now Blenko and Fenton are the only ones left) because of the coal and gas supplies. Ohio was probably #2 and Pennsylvania #3.

We also talked about the silver designs on many of the pinch decanters (and we will study silver more next month). DePasse-Pearsall of New York City did the Silver Swan design, usually marked with a label; King Silverplate did the swirl shapes; Silver City usually seen on Cascade and Caprice lines; and Lotus.

Our meeting ended with Show and Tell and this month's always interesting items included: a large Crystal One-Bun Geisha on an Everglades Swan plate; #3400 Decanter Set with red and white enamel lines thruout; a Bluebell Turkey; a Diane #3400 Puff Box; a Helio 1 lb Covered Candy; a very unusual Mueller German Art Deco light fixture with removable satin nude flower frog; a Red Imperial swirl Candlestick; a Consolidated Katydid Vase in very rare Red color; and a Dugan Diamond Stretch and Crackle Vase with Dancing Nymph decoration.

Our informative meeting adjourned at 10:00 pm. Our next meeting will be March 8th at the home of Barbara Wyrick, and the topic will be Silver Overlay. Bring things to discuss and identify, and also any Show and Tell items from the NCC Auction. We are always looking for new members in the Columbus, Ohio area and anyone interested in joining can contact either Linda Roberts @ [lroberts@columbus.rr.com](mailto:lroberts@columbus.rr.com) or Barbara Wyrick at [bwyr@ee.net](mailto:bwyr@ee.net).

—respectfully submitted by Barbara Wyrick, Secretary



*Ken Nicol explaining the difference between the Cambridge and other pinch decanters*



*Show and Tell at the Wildflowers Study Group Meeting*



**NUDES**

- A fabulous pair, yes pair, of #3011/29 nude-stemmed amber mint dishes sold for \$823 on 2/3. Too gorgeous.
- A wonderful #3011/6 nude stemmed roemer in Forest Green sold on 2/5 for \$351.
- A truly beautiful #3011/9 nude-stemmed cocktail with a Tahoe Blue bowl and crystal stem and foot sold for \$200 on 2/12. A most pleasurable piece to gaze upon.
- A simply outstanding example of the #40 flying nude lady bowl in Crown Tuscan with Charleton Roses decoration sold on 2/10 for \$511. Beautiful gold detail especially on the hair. Oooh-la-la.



**CAPRICE**

- A breathtakingly bodacious beauty of a piece of glass was sold on 1/28. It was a #165 Moonlight Blue Caprice Alpine candy and cover. This piece is simply gorgeous with the Alpine finish. It sold for \$75. Said to be in mint condition as well.
- February 9<sup>th</sup> was the sale date of a seldom seen #242 Caprice vase in Forest Green. It was the 6" size and quite lovely. It sold for \$76.
- Another fabulous Caprice vase was sold on 1/25. It was a #239 vase. It's a biggy in size, that's for sure. It measure's about 8 1/4" tall. It was in amber and it sold for \$71.
- Another elusive piece of Moonlight Blue Caprice sold on 1/28. It was the



#100 large cruet and stopper. Stopper was in blue too. The stoppers on this particular cruet were nearly always ground and polished but this auction didn't mention. This piece stated some minor roughness in normal areas for this piece and a nasty looking straw-mark. It sold for \$125.

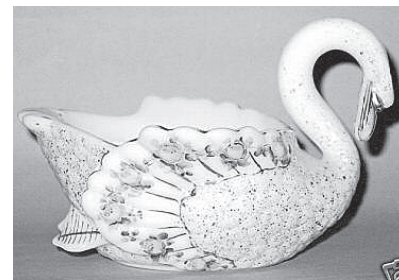
**FLOWER FROGS**

- A most magnificent light-emerald two-kids flower frog and seldom-seen #823 light-emerald square flower center with 4 candle cups sold on 2/8 for a whopping \$550.
- An awesome looking 13" tall amber draped lady flower frog sold on 1/28 for \$225.



**SWANS**

- February 6<sup>th</sup> witnessed the sale of a crystal swan punch bowl and 14 matching swan-handled cups. This set sold for \$1,455. And this was without a base for the swan!
- A crystal swan punch bowl by itself sold on 2/3 for \$565. Can you say 'elated seller'.
- A terribly beautiful 8" Crown Tuscan swan with heavy gold trim sold on 2/5 for \$204. The gold was extremely heavy and applied on the head in a way I'd not seen before. The gold was in B.U. mint condition, to be sure. Just a supreme example!
- G-O-R-G-E-O-U-S spells the correct adjective to use when viewing the most magnificent and simply splendid, s'wonderful and show-stopping swan that sold on 2/12. It was a milkglass 6 1/2" swan with a most fabulous Charleton decoration of roses and gold trim and detail and a striking gold spatter effect decoration on the body of this simply stellar swan. It sold for an impressive \$1,700 amidst a flurry of frenzied last minute bidding. Let's hope no tail feathers were ruffled during this auction! (Photo at the top of the next column.)



**ROSEPOINT**

*Friends, make your RosePoint research easy and purchase the RosePoint book and Value Guide from NCC as soon as the new updated edition is available in a few weeks. Look for the listing in your Crystal Ball.*

- One of my all-time favorite pieces of RosePoint (aren't they all my favorite, now really) sold on 1/28. It was a #3500/21 large and lengthy oval handled bowl. A true centerpiece for any table. It sold for \$179.
- January 28<sup>th</sup> was also the sale date of a fabulous #3121/4 low covered comport etched RosePoint. It sold for \$169.
- Another jaw-droppingly gorgeous piece of RosePoint sold on 1/30. It was a #485 crescent shaped salad plate. It sold for \$168. Wouldn't you just love to find a stack of 8 or 10 of these out in a mall for say \$45? Drool, drool.
- The most beautiful and small ashtray etched RosePoint sold on 1/31. It was a #1715 ashtray and part of the 4-stack ashtray set. Just one ashtray in this auction and it sold for \$166. The power of RosePoint.
- I was light-emerald green with envy when I saw the completed sale on 2/9 of a set of 9, yes 9, of the #3105 pressed and etched RosePoint water goblets. They sold on a buy-it-now format for \$500. Lucky bidder!

**OTHER ETCHES**

- A magnificent #1023 cocktail shaker and two #3400 footed bar tumblers in Light Emerald with Rosalie etching sold on 1/21 for \$760. The shaker had a

*Continued on page 10*

*Continued from page 9*

fancy metal top and look absolutely gorgeous.

• I hung my tears out to dry after viewing the luscious pair of 2-light keyhole #647 candleholders in Heatherbloom and etched Portia. If you have never seen a piece of this fabulous dichromatic color in person, then you need to make it your 'numero uno' glass priority of 2007. This pair sold for \$355 on 2/7.

• I wish the pictures would've been better for this most marvelous #851 ice bucket and bail that sold on 2/11. It was in light-emerald and had the ever-elusive Golf Scene etching. It sold for \$887. Tres rare.

**MISCELLANEOUS**

• A most wonderful Cambridge and Farber Brothers or Farber Ware 6-part epergne set with unusual Cambridge Carmen nappy inserts sold for \$500 on 1/31. Called a Lazy Susan, and very well could be, it was simply eye-popping.



• Visually arresting are the only words I could think of when I saw the elusive #1402/49 Tally-ho jug listed for sale. The deathly-deep cobalt blue color coupled with the stunning and deliciously contrasting applied crystal handle made for an eye-popping feast. It sold on 2/6 for \$392.

• Certainly mesmerizing were the pair of lovely SS#66 Krystal Shell candleholders. They were in amber and each had a crystal foot. They also had a dolphin stem. Just stunning. This pair sold on 2/2 for \$102.

*National Imperial Glass Collectors Society  
31st Annual Convention, Show & Sale*

**May 31 - June 3, 2007 - St. Clairsville, Ohio**  
Glass Show and Sale on Saturday & Sunday  
June 2-3

For information on the Convention Agenda  
visit the NIGCS website at

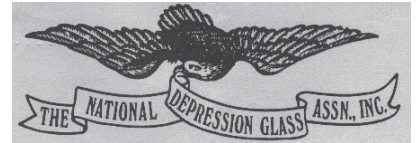
**www.imperialglass.org**

E-mail: info@nigcs.org, or  
write to  
NIGCS, PO Box 534, Bellaire, OH 53906

**THANK YOU FROM THE  
EDITOR**

***I would like to thank the members who contacted me after the February issue of the Crystal Ball. I have received several great contributions which will appear in future issues of the Crystal Ball as space permits. It is our members who will make this an interesting, informative and inspiring publication.***

**NDGA 2007**



July 7-8  
33rd Annual Convention Show & Sale  
Modesto Centre Plaza  
Modesto, CA 95354

www.NDGA.net  
E-mail Ed: Convention@NDGA.net

**IN MEMORIAM  
EVELYN KNOWLES**

Long time NCC member and avid Cambridge collector, Evelyn Knowles, passed away in early January after a long bout with cancer.

Evelyn was a native Floridian, as is her husband John, who survives. Also left to mourn her passing are her daughter Michelle, son Donald, their spouses and one grandson.

She will be greatly missed by all who knew her.

On behalf of the members of NCC, the Crystal Ball offers condolences to Evelyn's husband John and the family.





*Convention Corner*

*2007*

*34<sup>th</sup> Annual Convention*

*Wednesday, June 27 - Sunday, July 1*

*Greetings NCC Members! I'm baaaack.....I know it's only March, but I want to be sure that you've got our 2007 Convention on your Calendar and/or Blackberry. The dates are listed above. Plans are still in the preparatory stages, so if you're chomping at the bit to present a program or share some of your glass in a display, it's not too late. You can reach me, Shelley Cole, at (434) 296-2531 or send an email to slunicorn@aol.com if you'd like to get involved. I look forward to hearing from you and seeing everyone in June. Motel/Hotel information is included on this page. Be sure to make your reservations early!*

**2007 NCC CONVENTION MOTEL  
INFORMATION**

**Wednesday, June 27 - Sunday, July 1, 2007**

**All of these motels are located in Cambridge at Exit 178, Ohio route 209 off Interstate 70. Remember to mention that you are attending the National Cambridge Collectors Convention. Book before June 15 to ensure availability and best rates.**

**AMERIHOST CAMBRIDGE**

State Route 209 South

740 439-1505

\$59 single or double includes extended continental breakfast

(Indoor pool, in-room amenities)

**BEST WESTERN CAMBRIDGE**

1945 Southgate Parkway

740 439-3581

Approximately 50 rooms available until 06/20/04

\$54.95 single or double includes continental breakfast

(Outdoor pool, in-room amenities)

**HAMPTON INN CAMBRIDGE**

8775 Georgetown Rd

740 439-0600

\$85 per night for 4 or more night stay

\$89.10 per night if less than 4 night stay

Rates include continental breakfast

(Indoor pool, business center, wireless internet)

**HOLIDAY INN CAMBRIDGE**

2248 Southgate Parkway

740 432-7313

\$65 night for 2 or more night stay

(Outdoor pool, in-room amenities)

**COMFORT INN CAMBRIDGE**

2327 Southgate Parkway

740 435-3200

\$70 single or double includes continental breakfast

Evening snacks in the lobby

(Indoor Pool, in-room amenities)

**DAYS INN CAMBRIDGE**

2328 Southgate Parkway

740 432-5691

\$45 single or double includes continental breakfast

(Outdoor pool, in-room amenities)



## Thank You, Century Club Contributors

The members listed below joined at the Century level and beyond at the end of 2006. We should take a moment to thank the 2006 Century Club members who have helped to support the National Cambridge Collectors, Inc. through the new Symphony Membership Model. The success of the National Cambridge Collectors, Inc. relies upon your continued support, and members are encouraged to consider pledging at the Mardi Gras (\$200); Japonica (\$500) or President's Circle (\$1,000) level in 2007.

**Brent Berry**  
**Hedi Berry**  
**Diane Gary**  
**In Memory of Pamela Dawn Kuczewski**  
**Ruth Lee**  
**Ann Mang**  
**Kay Marchant**  
**Nancy Misel**  
**Janet Mitchell**  
**Freeman Moore**

**Jeannie Moore**  
**Jane Morton**  
**Gloria Morris**  
**Ken Rhoads**  
**Judy Rhoads**  
**Don Russell**  
**Ruth Russell**  
**Melissa Treier**  
**Frank Wollenhaupt**  
**Barbara Wyrick**

---

### President's Message

#### *Continued from page 3*

and those involved in the show. Again, we were making friends along the way.

Winter shows like Sanford brought northern collectors down, seeking better weather. I think fondly of seeing Lynn and Mary Welker on their annual four to six week junket to Florida. Or, Evelyn and Bob Buenting, Carl and Shirley Beynon and many more. It was a real treat to see who was there.

So what does any of this mean to you and why is Evelyn symbolic of the joy of collecting. Over the years, we have heard from some convention attendees how clique-y NCC can be. It always saddens me to hear this, because of the personal experience I have been privileged to have.

But for some, this is a real issue and one I would like to see progress on. Because many of us have made friends along the way, we tend to congregate with them when we haven't seen them for a long time. That's pretty natural.

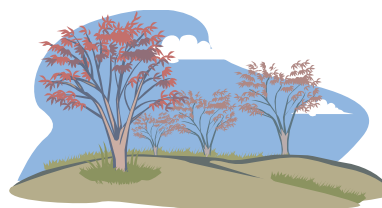
All of us long-time convention attendees need to really make this year the year we break out of some of those habits. Really bringing the joy of collecting to fellow enthusiasts helps attract more members to our family over time. They will tend to learn more, enjoy more, support the club more, you name it!

At the same time, those who feel a little threatened or intimidated, I have two words for you – Judy Rhoads. A few years ago, Judy and her husband Ken set up a Mentoring Program at convention for people just like you. Seek them out, follow them, dog them. Through them, you'll have a chance to meet many fine friends along the way.

Our Board members are very busy during convention so can seem aloof as well. I guarantee you they are not. They are a talented, diverse and passionate group – they are worth getting to know because they express their love for Cambridge Glass in the hours of selfless work they dedicate to our cause.

Another member asked to learn more about these elusive Board members. A great idea! And, I told Helen Klemko I'd be happy to go first - look for my article in a future Crystal Ball. I love Cambridge Glass, our club and the friends I have been privileged to make ... along the way.

*Rick*



**Spring is coming!**

## National Glass Collection at Cambridge - By Linda Bredengerd

as printed in the January/February 2007 issue of The National Depression Glass Assn. Inc. "News & Views"

In our last issue, you got to read all about Linda and Dave Adams taking a display of amber Madrid glass from our National Glass Collection to display at the Redlands Museum in California. I'm sure you enjoyed reading about their adventure and the details about the museum and the fun of taking the display to them as much as I did.

Well, now I get to tell you another story about another display of our glass!

Many of you already know that the National Cambridge Collector's Club, Inc. had generously offered to display a portion of our National Glass Collection in their National Museum of Cambridge Glass in Cambridge, Ohio during the coming year - a wonderful opportunity to show some of the wonderful glass that has been donated for our collection, as well as exposing a larger number of people to the existence of the National Depression Glass Association, and the National Collection which we have established.

Once our collection was re-located to a warehouse in Wichita, Kansas, where I reside, and securely placed in the new bins, the task of deciding what to take to Cambridge was the first step. Acquisition Committee members Sarah Van Dalsam and Amanda Parmenter, some wonderful volunteers (David and Hayden Van Dalsam) and myself, began that task the very weekend that we moved the glass into the storage facility.

We first began with the "oldest" acquired boxes to see what we had. It was both fun and hard, dirty work to unwrap and examine each piece. We then either repacked the glass in good wraps and placed in good sturdy plastic storage cartons, or sat it on tables to be packed for the Cambridge display. All pieces were matched to inventory sheets and the pieces going to Cambridge were re-labeled with clear labels and placed as inconspicuously as possible so as not to detract from the beauty of the glass.

Sarah made four trips up from Tulsa, Oklahoma to spend the weekends working with Amanda and I on the process of re-

labeling, matching to inventory, cleaning, and re-packing the glass for its trip.

On a bright, sunny and warm fall day, November 2, 2006, Sarah Van Dalsam and I loaded up a rented van with 22 crates packed full of glass out of the National Collection - destination Cambridge, Ohio. (Believe me, if Sarah and I had not been friends before this, we now have enough road time together to qualify as best friends, and know just about all there is to know about each others families. We also solved most of the greater problems existing in the world and decided that if the world would just listen to us, it would be a much better place!)

We drove till dark and settled in for the night in Indianapolis, Indiana. We had reasoned that if we drove as far as we could - we would have a very short trip on the next day, Friday, and we were not expected in Cambridge until late afternoon or early evening.....soooo that meant we had time to stop in Springfield, Ohio to shop. We happened upon two large Antique Malls before making it to the Heart of America Mall which was our intention. Well - by the time we got through those, we had no time left for Heart of America and decided we would have to do it on the way home. (And we did - and we were short of time,

*continued on next page*



## National Glass Collection at Cambridge - By Linda Bredengerd

*(Continued from previous page)*

but if you go – there are six large buildings – and we completed one aisle of one building in one hour! That’s huge, folks! I have decided that most of the glass that exists for sale is in Ohio!)

So – back on the road to Cambridge, and we did arrive late afternoon – about 4:30 and found the museum with no problem. As we drove up, parked and got out of the van, we were met by a group of people standing outside the museum – including Cindy Arent who is the director-curator, and some of the volunteers who work at the museum and some people who were there for the Cambridge-quarterly meeting the following day. While Sarah and I were standing open-mouthed and staring like a couple of country girls just into the city, volunteers had un-loaded the van and placed the glass inside the museum for the evening. We both felt like visiting royalty as we were treated so very graciously and met such excitement from these people about getting to see our glass!

We did a very quick tour of the display cases – row upon row of beautiful, gorgeous, fantastic glass – thinking to ourselves “my goodness, how is our glass going to look or hold its own with all this wonderful elegant glass?” Well we didn’t have long to think as we were whisked off to Ruby Tuesday’s to get acquainted and have dinner with this great group of people.

Saturday morning, we arrived back at the Museum and got to tour the facility and spend more time looking at glass while waiting for the current “Guest Display” to be removed and the space prepared for our glass. (What a way to kill time!) Five large display cases were allotted to us and we went from worrying whether we brought enough glass to fill them to maybe we brought too much – but then the fun began. As we started unpacking the glass and placing it, we were deluged with onlookers from the Cambridge Club – all curious to see what we brought and to learn as much as they could about our glass! Sarah and I were both astounded that we would receive that much interest and enthusiasm. Our doubts about our Depression glass in an “elegant” surrounding soon disappeared with the oohs and aahs. Admittedly, it was difficult to get work done for answering questions and talking about the glass. We shut down at 4:30 to leave and attend the quarterly meeting and banquet as honored guests and where President Rick Jones explained who we were and what we were doing there. We were both impressed with the professionalism and efficiency with which this organization is managed.

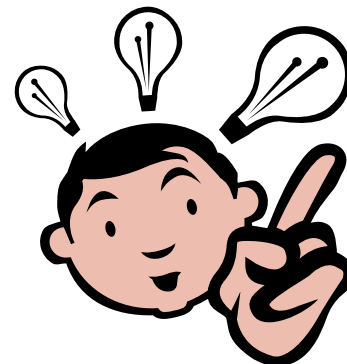
Bright and early Sunday morning, Cindy Arent opened the Museum to us to finish our display – very graciously giving up her only day off! Even this day, members drifted in and out, noticing that there were lights on,

and knowing we were in there, and everyone very anxious to see what else we were putting out! And finally, we were finished and it was LOVELY! With great pride, we stood back with everyone else to admire the beautiful display – and all the qualms about our glass fitting in vanished as we accepted the praise and questions and comments. You couldn’t tell where the Museum glass ended and ours began!

Our display – in five large 5 foot cases with 5 shelves 16 inches in width in each case – includes groupings of vases, console sets, boudoir items, kitchen items, honorary items donated for Show Chairmen, memorial items, lamps and lamp shades, glass animals, stems, children’s dish sets, candlesticks, the Julian McEwen Dolphin memorial collection, small groupings of many patterns, and the Fred and Nita Eldridge 6 inch plate collection was included so that we could represent as many patterns as possible.

Identification cards are placed by each pattern, grouping or piece so that the viewer will be able to identify them and a placard explains about the NDGA and the collection. Brochures with information about the NDGA and membership applications are also by the display and at the front desk. The volunteers who serve as tour guides will spotlight our display and give information as part of their tour. The display will remain there until next November – so if you have the chance, or are anywhere near Cambridge – GO SEE IT! Be sure to tell people about it too, and most of all – be proud! If you know someone who is a Cambridge collector or club member – thank them.

As with all trips, the trip home was not nearly as much fun – the traffic was awful and it was dreary and rainy. Sarah informed me that she would never do the driving in Missouri again – she didn’t find the truckers to be too courteous and neither of us found our servers to



**Share your ideas. Do you have questions?  
Send them to me at  
[ncccrystalball@charter.net](mailto:ncccrystalball@charter.net)**

# NCC Merchandise

## Scotty Dog Bookends

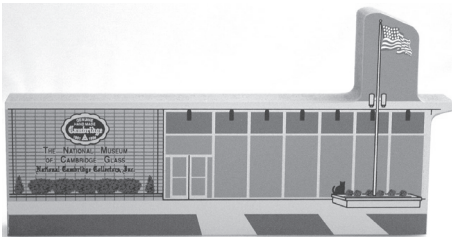
\*\*\*\*\*



\$112/pair  
Cobalt Blue  
includes shipping



## Cat's Meow: NCC Museum



\$20



## Vaseline Prism Sign

2005 Convention Favor



\$15 each

## Salt & Pepper Tops

\*\*\*\*\*

Polycarbonate plastic will fit most Cambridge shakers, such as Rosepoint footed and flat-bottom shakers. They also fit Heisey Rose, Saturn, Plantation, Crystalite and some Orchid. Fit some Anchor-Hocking and Candlewick.



\$6/pair

Order 20 pair (or more) and pay only \$5 per pair.



## NCC Logo Pin



\$5 each



## Commemorative Tape Measure

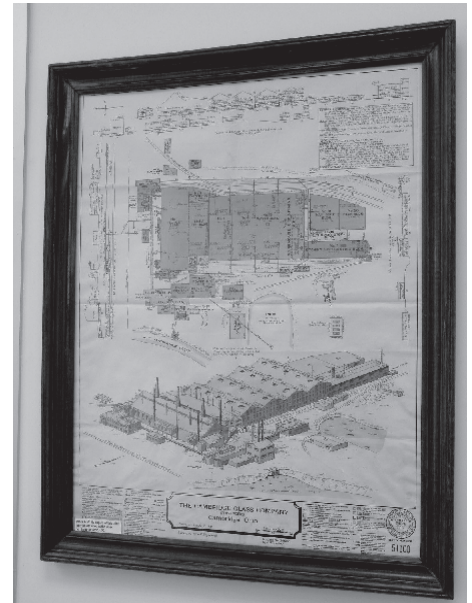
Issued for the Grand Opening of the National Museum of Cambridge Glass



Special...\$1 each

## Factory Map and Elevation

Reproduced from the original, which hangs in the NCC Museum



\$12.50 each



## "The Crystal Lady"

Copy of an original Cambridge Glass promotional film; shows the manufacture of a goblet.

VHS or DVD \$15



## "Primrose"

## Prism Sign

2006 Convention Favor

\$15



Book and Merchandise Sales thru the NCC Website are back on-line. To order, go to [www.CambridgeGlass.org](http://www.CambridgeGlass.org) and click on Members-Only.

### Send orders to:

NCC • PO Box 416 • Cambridge, OH 43725

OHIO RESIDENTS PLEASE ADD 7% SALES TAX

Please include your name, complete mailing address and your phone number or e-mail address. Payments by check or Money Order only, payable to NCC.

### How to Order

#### SHIPPING/HANDLING:

|                                                    |        |
|----------------------------------------------------|--------|
| All items (including books) <b>except</b> Scottys: |        |
| Total order up to \$6                              | \$1.50 |
| \$6.01 to \$25.00                                  | \$4.50 |
| \$25.01 to \$50.00                                 | \$5.50 |
| \$50.01 to \$75.00                                 | \$6.50 |
| Over \$75.00                                       | \$8.50 |



# Books for Sale

*Published by NCC • Members receive a 10% discount • **CLICK ON BOOK TITLE TO ORDER THRU NCC WEBSITE***

| TITLE                                     |                                                      | REGULAR PRICE | MEMBER PRICE |
|-------------------------------------------|------------------------------------------------------|---------------|--------------|
| <b>1910 NearCut Catalog Reprint</b>       | 108 pages, paperback with 2004 price guide           | \$14.95       | \$13.45      |
| <b>NearCut Value Guide</b>                | (when purchased separately)                          | \$3.00        | \$2.70       |
| <b>1930-34 Catalog Reprint</b>            | 250 pages, paperback with 1997 price guide           | \$14.95       | \$13.45      |
| <b>1930-34 Catalog Index</b>              |                                                      | \$2.00        | \$1.80       |
| <b>1949-53 Catalog Reprint</b>            | <b>JUST RE-ISSUED</b>                                | \$19.95       | \$17.95      |
| <b>1956-58 Catalog Reprint</b>            | 160 pages, paperback, no price guide                 | \$12.95       | \$11.65      |
| <b>NEW... Cambridge Colors II</b>         | Hardcover with price guide                           | \$19.99       | \$17.99      |
| <b>Caprice</b>                            | 200 pages, paperback with 2003 price guide           | \$19.95       | \$17.95      |
| <b>Caprice Value Guide</b>                | (when purchased separately)                          | \$5.00        | \$4.50       |
| <b>Decorates</b>                          | 136 pages, paperback, no price guide                 | \$14.95       | \$13.45      |
| <b>NEW... Etchings (2nd Edition)</b>      | <b>Now available</b>                                 | \$17.95       | \$16.15      |
| <b>Etchings, Non-Catalogued</b>           | 70 pages, paperback, no price guide                  | \$12.95       | \$11.65      |
| <b>Etchings: Blossomtime</b>              | 26 pages, paperback, no price guide                  | \$7.95        | \$7.15       |
| <b>Etchings: Candlelight</b>              | 30 pages, paperback, no price guide                  | \$7.95        | \$7.15       |
| <b>Etchings: Chantilly</b>                | 44 pages, paperback, no price guide                  | \$7.95        | \$7.15       |
| <b>Etchings: Diane</b>                    | 53 pages, paperback, no price guide                  | \$7.95        | \$7.15       |
| <b>Etchings: Elaine</b>                   | 64 pages, paperback, no price guide                  | \$9.95        | \$8.95       |
| <b>Etchings: Portia</b>                   | 57 pages, paperback, no price guide                  | \$7.95        | \$7.15       |
| <b>Etchings: Wildflower</b>               | 42 pages, paperback, no price guide                  | \$7.95        | \$7.15       |
| <b>Rock Crystal Engravings</b>            | 119 pages, paperback, no price guide                 | \$17.95       | \$16.15      |
| <b>Rock Crystal Engravings (Listings)</b> | Companion to above; lists all pieces in all patterns | \$9.95        | \$8.95       |
| <b>Rock Crystal 1940 Price List</b>       |                                                      | \$14.95       | \$13.45      |
| <b>Rosepoint</b>                          | Temporarily unavailable - Out of stock               |               |              |
| <b>Rosepoint Value Guide</b>              | (when purchased separately)                          | \$5.00        | \$4.50       |

**Other Publications • No discounts:**

| TITLE                                                                                            | REGULAR PRICE |
|--------------------------------------------------------------------------------------------------|---------------|
| <b>Glass Candlesticks: Volume I - Akro Agate thru Fenton</b> .....                               | \$24.95       |
| <b>Glass Candlesticks: Volume II - Fostoria thru Jefferson</b> .....                             | \$24.95       |
| <b>Glass Candlesticks: Volume III - Kanawha thru Wright</b> .....                                | \$29.95       |
| <b>Charleton Decorations</b> .....                                                               | \$29.95       |
| <b>1903 Cambridge Catalog Reprint</b> .....                                                      | \$6.00        |
| <b>1927-29 Cambridge Catalog Reprint (with 1996 Price Guide)</b> .....                           | \$9.95        |
| <b>1927-29 Value Guide (when purchased separately)</b> .....                                     | \$3.00        |
| <b>1940 Cambridge Catalog Reprint (unbound, on 3-hole paper)</b> .....                           | \$25.00       |
| <b>Binder for 1940 Catalog</b> .....                                                             | \$5.00        |
| <b>Reflections: A History of Guernsey County Glass Production</b> .....                          | \$5.00        |
| <b>Cambridge Stemware by Mark Nye</b> .....                                                      | \$19.95       |
| <b>Welker's Volume II (color plates showing pieces from private collection)</b> .....            | \$5.95        |
| <b>The Art of Making Fine Glassware</b> .....                                                    | \$4.00        |
| <b>Glass Animals (2nd Edition)</b> .....                                                         | \$24.95       |
| <b>Kitchen Glassware of the Depression Era (6th Edition) by Gene Florence</b> .....              | \$24.95       |
| <b>Collectible Glassware from the 40's, 50's &amp; 60's (7th Edition) by Gene Florence</b> ..... | \$24.95       |
| <b>Treasures of Very Rare Depression-Era Glass by Gene Florence</b> .....                        | \$39.95       |
| <b>Elegant Glassware of the Depression Era (11th edition) by Gene Florence</b> .....             | \$24.95       |

### How to Order by Mail or from the NCC Website

|                                                                                                                                                                                                                                                                                  |                                                                                                                                                                                                                                                                                                |
|----------------------------------------------------------------------------------------------------------------------------------------------------------------------------------------------------------------------------------------------------------------------------------|------------------------------------------------------------------------------------------------------------------------------------------------------------------------------------------------------------------------------------------------------------------------------------------------|
| <p>Send orders to:<br/>NCC • PO Box 416 • Cambridge, OH 43725</p> <p>OHIO RESIDENTS PLEASE ADD 7% SALES TAX</p> <p>Please include your name, complete mailing address and your phone number or e-mail address.</p> <p>Payments by check or Money Order only, payable to NCC.</p> | <p style="text-align: center;">SHIPPING/HANDLING RATES ON PAGE 16</p> <p><i>Books may also be purchased on the NCC website, in the Members-Only Section. Major Credit Cards are accepted only on web purchases.</i></p> <p><i>See page 20 for website address, user name and password.</i></p> |
|----------------------------------------------------------------------------------------------------------------------------------------------------------------------------------------------------------------------------------------------------------------------------------|------------------------------------------------------------------------------------------------------------------------------------------------------------------------------------------------------------------------------------------------------------------------------------------------|



## Stems Without Thorns

As the world's largest supplier of old & new china, crystal, silver and collectibles, Replacements, Ltd. has more than 700 different patterns of Cambridge crystal.

And however much we enjoy selling pieces that were once thought irreplaceable, we love buying them as well. Thanks to people like you, our crystal inventory currently numbers in the hundreds of thousands, and the numbers keep growing every year.

So, if you've been unsuccessfully searching for that elusive piece of Cambridge - or any other type of fine crystal - call us for a free list of pieces available in your pattern. And, if you're looking to sell pieces you currently have, we can help you there, too.

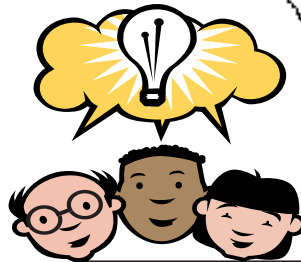
## REPLACEMENTS, LTD.

*China, Crystal & Silver • Old & New*

**1-800-REPLACE**  
**(1-800-737-5223)**

1089 Knox Road  
PO Box 26029, Dept. CB  
Greensboro, NC 27420  
[www.replacements.com](http://www.replacements.com)

# Classified Ads



**BUY, SELL, COMPLETE A SET.....your ad can run here for as little as \$2. Reach over 1,000 avid collectors of Cambridge Glass. See page 3 for details or email [nccrystalball@charter.net](mailto:nccrystalball@charter.net)**

## DEALER DIRECTORY

**YOUR AD COULD BE HERE  
REACH THOUSANDS OF  
COLLECTORS  
ONLY \$24 PER YEAR  
SEE PAGE 3**

THE DEGENHART PAPERWEIGHT  
AND GLASS MUSEUM, INC.

P.O. Box 186  
Cambridge, OH 43725-0186

Intersection of US 22 & I-77  
Phone 740-432-2626

Dee and Tony Mondloch  
Phone: 850-747-8290 [glass01@knology.net](mailto:glass01@knology.net)  
1609 Clay Ave. Panama City, FL 32405

### *Precious & Few*

Tiffin and Duncan & Miller Glassware,  
Other Elegant Glass, Antiques, Collectibles

Shop: [www.apreciousfew.com](http://www.apreciousfew.com)

**YOUR AD COULD BE HERE  
REACH THOUSANDS OF  
COLLECTORS  
ONLY \$24 PER YEAR  
SEE PAGE 3**

### **GREEN ACRES FARM**

2678 Hazelton Etna Rd.  
Pataskala, OH 43062  
(State Route 310 North)

Sat & Sun 1-7 pm 740-927-1882  
Antiques, Crystal Glass & Collectibles

### **THE GLASS URN**

456 West Main Street, suite G  
Mesa, AZ 85201 480-833-2702  
480-838-5936

Mail Order Open Shop

CAMBRIDGE, FOSTORIA, HEISEY, etc.

**YOUR AD COULD BE HERE  
REACH THOUSANDS OF  
COLLECTORS  
ONLY \$24 PER YEAR  
SEE PAGE 3**

John **Burlingame** Betty

Visit our booth (B-6) in

### **DELILAH'S**

301 1st Street Sanford, FL 32771  
*Antiques, glass, pottery, collectibles, etc.*  
cell 386-212-7121 tel 407-330-2272

### **Max Miller**

Elegant Glassware • Books • Fiesta  
...and more

THE MARKET PLACE

(713) 467-0450 - BUS 10910 OLD KATY RD.  
(713) 461-1708 - RES HOUSTON TX 77043  
[MMXGLASS@aol.com](mailto:MMXGLASS@aol.com)

### **virtualattic at the glass chalet**

specializing in elegant depression era glass

Sandra L. Bridwell-Walker PO Box 3448  
**William P. Walker** Cleburne TX 76033-3448  
Phone: 817-202-0940  
Sandy's Cell: 817-559-0328  
Bill's Cell: 817-357-7084  
[www.virtualattic.com](http://www.virtualattic.com)  
[virtualattic@sbcglobal.net](mailto:virtualattic@sbcglobal.net)  
[theglasschalet@sbcglobal.net](mailto:theglasschalet@sbcglobal.net)

## Remember...

When writing to these dealers,  
please include a self-  
addressed, stamped envelope.



John & Peggy Scott  
Scotland Ridge Farm  
PO Box 1001  
Aurora, MO 65605

### **SCOTTY'S ANTIQUES**


*Elegant Glassware of the Depression Era  
Mainly Cambridge and Florence Ceramics  
Retirement: Selling all inventory  
at reduced prices*

(417) 678-0624  
[scottjnp@aol.com](mailto:scottjnp@aol.com)

# DEALER DIRECTORY

When writing to these dealers, please enclose SASE

**DAUGHERTY'S ANTIQUES**  
Antiques and Collectibles



Specializing in  
Depression Era, Elegant and Pattern Glass  
Porcelain, Pottery and old books

402-423-7426  
www.daugherty-antiques.com  
Jerry and Shirley Daugherty

**Milbra's Crystal** Buy & Sell

Replacement and Matching  
Milbra Long (817) 645-6066  
Emily Seate (817) 294-9837  
PO Box 784  
Cleburne TX 76033

Specializing in  
Cambridge,  
Fostoria, Heisey  
and others

E-mail: longseat@sbcglobal.net  
www.fostoriacrystal.com

**BARNESVILLE ANTIQUE MALL**  
open 7 days, 8 - 5  
**Nancy and Brian Mayhugh**  
Owners

202 N. Chestnut St. 740-425-2435  
Barnesville, Ohio 43713 3 floors  
EXIT 202 OFF I-70 • always buying & selling antiques

**ALADDIN LAMP BOOKS**  
Free History of Aladdin Lamps  
Figurine Lamps Wanted  
Bill & Treva Courter  
brtknight@aol.com

3935 Kelley Rd. Phone 270-488-2116  
Kevil, KY 42053 FAX 270--488-2116

Fostoria Glass Society of America  
Traveling Ambassadors  
**Ralph & Joyce Rider**

For info: 817-545-5856  
E-mail: r.rider@sbcglobal.net

**B&H ANTIQUE MARKETPLACE**  
3739 Highway 29 North  
Danville, VA 24540  
(434) 836-4636  
www.bhantiqueauctions.com

Cambridge • Heisey • Duncan • Fostoria  
Open Thur-Sat 11:00 to 5:00 (seasonal hours apply)

**Glass Menagerie Antiques**  
Your Website for quality Glass from  
the 20's, 30's, 40's & 50's.  
**www.glasstresurechest.com**

**BAKER FAMILY MUSEUM**  
805 CUMBERLAND ST.  
CALDWELL, OHIO 43724  
740- 732-6410  
bakermuseumnellbaker@msn.com

Wed & Thurs 9-4; Fri - Sat 9-5

**CRYSTALLINE COLORS**  
Cambridge • Fostoria • Elegant Glass

Riverfront Antique Mall  
New Philadelphia, OH (I-77, exit 81)  
Booth #'s 626 and 616

Lynne R. Franks 216-661-7382

**CRYSTAL LADY**  
Thurs. - Sat. 11-5  
1817 Vinton St. Omaha, NE 68108  
**Bill, Joann and Marcie Hagerty**  
Shop 402-341-0643 Home 402-391-6730

Specializing in Elegant Glass & Collectibles  
www.crystalladyantiques.com

**Storck's Antiques**  
**Rick & Joyce**  
Antiques & Collectibles  
Fenton, Imperial, Heisey & Cambridge  
Storck1@aol.com (763-477-6415)  
Booth 11 & 12 in the Antique Mall  
12820 Main Street, Rogers, MN

 **Mother Drucker's**  
**Penny Drucker**  
Specializing in Elegant Glassware  
Shows & Mail Order

PO Box 50261 (949) 551-5529  
Irvine, CA 92619 (888) MDRUCKER  
www.motherdruckers.com

**Deborah Maggard, Antiques**  
Specializing in Cambridge Glass,  
American Hand-Made Glass & Victorian Art Glass

We buy one piece or entire collections.  
Please contact me at 440-247-5632  
debbie@deborahmaggardantiques.com

P.O. Box 211 • Chagrin Falls, OH 44022

**GLASS FROM THE PAST**  
Maureen Gillis



www.glassfromthepast1.com  
email: maureen@glassfromthepast1.com

**JUDY'S ANTIQUES**  
Judy Bennett  
422 S. Ninth Street (corner of Jefferson)  
Cambridge, Ohio 43725

Business (740) 432-5855  
Residence (740) 432-3045  
**CAMBRIDGE GLASS MY SPECIALTY**

**Cherished Collectibles**  
Shopping 24 hours in our online store  
Glassware, Figurines, Collectors' Plates

**www.cherished-collectibles.com**  
Elegant and Depression Era Glass


Mon. thru Sat. 10 - 5:30 • Sunday 12 - 5:30

**Bogarts' Antiques**

BUY • SELL • APPRIASE • REFINISH • CANE & REED CHAIRS  
CLOCK REPAIR

Jack & Sharon Bogart ST.RT. 40  
740-872-3514 shop 7527 EAST PIKE  
740-826-7439 home NORWICH, OHIO  
43767

**BOGARTSANTIQUES@CORE.COM**

 **Mary Jane's Antiques**  
Early American Pattern Glass  
Depression Era Items

2653 Burgener Drive (217) 422-5453  
Decatur, IL 62521 mjhumes@aol.com

**THE GLASS HOUSE ANTIQUE MALL**  
Furniture, Pottery, Glass  
Antiques and Collectibles  
I-70 Exit 146, East on SR 40

8825 E. Pike  
Norwich OH 43767 TEL 740-872-3799

**GATEWAY ANTIQUE MALL, INC.**  
JUST NW OF MINNEAPOLIS-ST.PAUL, MN  
Next to Super 8 in Rogers, MN  
(I-94/101 intersection)

Multi-Dealer  
7 days; 10am - 6pm • 763-428-8286  
ELAINE STORCK, OWNER/DIRECTOR

**ISAACS ANTIQUES**  
(740) 826-4015

See our booths in Penny Court Mall in  
Cambridge and at White Pillars Antique Mall  
(Route 40, one mile west of  
I-70 Norwich, OH • Exit #164)

**PENNY COURT MALL**  
637 Wheeling Avenue  
Cambridge, Ohio  
100 Booths 15,000 sq ft

HOURS: Daily 10-6 Sunday Noon-5  
Closed: Easter, Thanksgiving, Christmas

Call for other holiday hours 740-432-4369

**MARGARET LANE ANTIQUES**  
2 E. Main St. New Concord, OH 43762  
Lynn Welker (740) 826-7414

Cambridge Glass Matching Service  
Hours: Mon-Fri 10-12 AM, 1-5 PM  
or by appointment

 **Our House Antiques**  
Linda & David Adams  
Las Vegas, NV

702-838-1341 or  
800-357-7169

Web: www.OurHouseAntiques.com  
E-mail: David@OurHouseAntiques.com



# Additional NCC Merchandise

\*\*\*\*\* NEW ITEM \*\*\*\*\*

## Frosted Cobalt Scotty Dog Bookends



**\$110/pair**  
**Plus \$12 shipping & handling; sales tax if applicable.**

## Logo Patch



This attractive, embroidered Cambridge Logo Patch was produced by the Elegant Study Group to benefit NCC.

It measures 2" by 3.5" and can be ironed or sewn onto almost any fabric

**\$5 each**

## Educational DVD's

by the Miami Valley Study Group

" **Cambridge Glass & All that Jazz**  
Presented at the 2004 NCC Convention; it covers Cambridge Glass patented, introduced or featured in the years 1925 thru 1930. Runs 25 minutes. **\$13.00**

" **Cambridge Glass: Ladies and All**  
Presented at the 2006 NCC Convention; covers the years 1931 and 1932. Runs 38 minutes. **\$18.00**

" **Special: Both DVD's for one low price**  
**\$29.00**

**Refer to Page 16 for Ordering Information**

### Change of Password

~~~~~

Effective February 2007, please access the NCC Website - Members Only Section as follows:

**User Name: NCC**

**Password: CarmeN**

(case-sensitive, MUST be entered as shown)

### Websites

- **NCC WEBSITE**  
[www.CambridgeGlass.org](http://www.CambridgeGlass.org)
- **NCC WEBSITE - MEMBERS ONLY SECTION**  
[www.CambridgeGlass.org/NCCmembers](http://www.CambridgeGlass.org/NCCmembers)  
(User Name: NCC • Password: CarmeN)
- **MIAMI VALLEY STUDY GROUP WEBSITE**  
[www.mvsg.org](http://www.mvsg.org)

*Membership Renewal Notice: If the date above your name is 3-07, this is your last issue, and your NCC Membership has expired. Please renew today.*

National Cambridge Collectors, Inc.  
PO Box 416  
Cambridge OH 43725

website: [www.cambridgeglass.org](http://www.cambridgeglass.org)  
e-mail: [ncccystalball@charter.net](mailto:ncccystalball@charter.net)  
(not for address changes, please)

**FIRST CLASS MAIL**  
**US POSTAGE**  
**PAID**  
**PERMIT No. 3**  
**CUMBERLAND OH 43732**

**FIRST CLASS MAIL**