



# Cambridge Crystal Ball

Published monthly (except July) by National Cambridge Collectors, Inc. to encourage and report the discovery of the elegant and boundless product of the Cambridge Glass Company of Cambridge, Ohio

Issue No. 404

February 2007

## Auction Preview

By Squeek & Dorothy Rieker

The yearly NCC Benefit Auction is fast approaching. By now, most of you have read the listing found in last month's Crystal Ball, and have check marked many items of interest as consideration for your collection. Once again, we were surprised at the varied pieces of glass consigned to the auction. This always puts into perspective just how many types and colors of glass that Cambridge made. Truly amazing!

Selecting only a few pieces to highlight in this article is always difficult. But this year we chose: Crystal #3795 Sweetheart goblet; the Bluebell Geisha figurines; Crystal cocktail mixer etched Apple Blossom; experimental translucent Jade Green #3400/54 cup and saucer; Peach-Blo #824 candleholders; Mulberry Community electric stand lamp; Crystal Caprice 1/4-pound stick butter and cover; Goldenrod Martha Washington bowl; Crystal Community shaving mug; Gold Krystol sugar and creamer etched Brettone; Ivory with Brown Enamel owl lamp; Peach-Blo footed aquarium etched Martha; Crown Tuscan seashell comport with Sterling



*Some of the gorgeous pieces available this year*

Silver sea horse decoration; Crown Tuscan 9" seashell plates; Amethyst ball tumblers with Charleton enamel decoration; Carmen 11" covered urn; Crystal Pristine decanter with Lexington cut; Crystal Peacock NearCut tumbler; and Crystal 8" round salad plates etched Rosepoint.

Each year we notice the auction will have a large amount of a certain type of glass. Be it a color, an etch, or an item (bowls, candlesticks, comports, decanters, etc.). This year we would have to say it is the vase. There are many different colors, etches, sizes, and styles of vases. This includes:

Cylinder vases in the colors Amber, Ebony, Primrose, Helio, Madeira, Azurite, and Jade; Sweet Pea vases in Ivory, Jade, and Willow Blue aero optic; Rubina 10-1/2" vase; Ebon gold decorated Stars; Amber #242 Caprice; Ebony satin finish Everglade vase; Crystal #6004 etched Chantilly; Crown Tuscan GE Diane globe vase; Ebony square vase etched Dancing Girl; Light Emerald #1242 vase; Pomona 10" vase; Gold Krystol #1303 etched Lorna; and Crystal #278 etched Windsor Castle. Quite an impressive list of vases, but only a small sampling of those available.

This NCC Benefit Auction has appeal for all collecting interests. It has a good mix of common, unusual, and rare. (We need to keep all our collectors happy!) Come spend a fun day with your "Cambridge Glass" friends, add some beautiful glass to your collection, and help fund your favorite glass museum. If you cannot attend, please mail in your absentee bids (instructions are found on front of the auction catalog). We thank you in advance for your support, and look forward to seeing you in Cambridge at this benefit auction on Saturday, March 3, at The Pritchard-Laughlin Civic Center.

**NCC Benefit Auction Preview Photos on Pages 13, 14 and 15 - Enjoy**

**NCC Merchandise - New Item: Frosted Cobalt Scotty Dog Bookends**  
**Change of Password: NCC Website - Members Only Section**

**Refer to Page 20 for details**

# National Cambridge Collectors, Inc.

PO Box 416 Cambridge, OH 43725-0416

## Membership

**Patron: Single \$22; with 1 Associate \$25**

*·Additional Associate memberships are available at \$3 each.*

**Benefactor - Century: \$100**

*·Includes membership for Master Member and unlimited Associate Members, plus Century Club membership for Master Member.*

**Benefactor - Mardi Gras: \$200**

*·Includes membership for Master Member and unlimited Associate Members, plus Century Club membership for all members (limit of two plaques in Museum).*

**Benefactor - Japonica: \$500**

*·Includes membership for Master Member and unlimited Associate Members, plus Century Club membership for all members (limit of two plaques in Museum).*

**President's Circle: \$1,000**

*·Includes membership for Master Member and unlimited Associate Members, plus Century Club membership for all members (limit of two plaques in Museum). Also includes Convention registration for two adults and one copy of each new NCC book upon publication.*

❖❖❖❖❖❖❖❖❖❖

*Associate Members must be at least 18 years of age and live in the same place of residence as the Master Member. Associate Members have full voting rights, but do not receive an additional copy of the newsletter.*

## Address Changes

Please send address changes to:

Membership - NCC

PO Box 416

Cambridge, OH 43725

or by e-mail to:

lin26@hocking.net

## Board of Directors

Linda Adkins

Cindy Arent

Shelley Cole

Larry Everett

Ken Filippini

Rick Jones

Sharon Miller

Mark Nye

David Ray

Mike Strebler

Lorraine Weinman

Lynn Welker

## Officers & Committee Chairs

President

Rick Jones

Vice-President

Ken Filippini

Secretary

David Ray

Treasurer

Mike Strebler

Sergeant-at-Arms

Larry Everett

Acquisitions Committee

Lynn Welker, Chairman

Archives Committee

Mark A. Nye, Archivist

Budget & Finance Committee

Mike Strebler, Chairman

By-Laws Committee

Alex Citron, Chairman

Crystal Ball

Helen Klemko, Executive Editor

Endowment Committee

Rick Jones, Chairman

Facilities Committee

Carl Beynon, Chairman

Joe Miller

Grants & Fundraising Committee

Sharon Miller,

Chairman

Long-Range Planning Committee

(vacant)

Membership Committee

Linda Adkins, Chairwoman

Freeman Moore, Development Chairman

Museum Committee

Cindy Arent, Chairwoman

Nominating Committee

Ken Filippini, Chairman

November Program Committee

David Ray, Chairman

Projects Committee

Bill Hagerty, Chairman

Publications Committee

Mark A. Nye, Chairman

Publicity Committee

Lorraine Weinman, Chairwoman

Study Groups

Judy Rhoads, Advisor

Technology

David Adams, Webmaster

Alex Citron, ebay Store

Auction Committee

Dorothy Rieker

Squeek Rieker

Lynn Welker

Convention Committee

Shelley Cole, Chairwoman

Glass Show & Sale

Mary Beth Hackett, Co-

chairwoman

Joy McFadden, Co-chairwoman

Glass Dash

Larry Everett, Co-chairman

Susan Everett, Co-chairwoman

Books & Merchandise Fulfillment

Linda Adkins

## National Museum of Cambridge Glass



Located at 136 S. 9th Street in

downtown Cambridge, OH

Closed for the season.

SEE YOU IN APRIL

## Contacts

NCC Museum [open April thru October only]

(phone)..... (740) 432-4245

(fax)..... (740) 439-9223

Rick Jones, President.....e-mail: Caprice0@aol.com

David Ray, Secretary.....e-mail: westervillesh@hotmail.com

Helen Klemko, Crystal Ball Editor e-mail:cambridge@charter.net



# President's Message

## Keeping a Tidy House

I married an organized woman. Lucky me! In my first thirty years, I always knew I was a procrastinator and that organization was not a core strength. But, for the past 25 years, I've made being organized a priority.

I'm very fortunate around NCC to have a number of dedicated volunteers who are not only motivated, but are highly organized. It has put us in a position that as I look at 2007, our house is in very good order!

Our accomplishments over the past year have been quite remarkable – some very visible, others not so.

The first to mention is our very successful financial transition from **Dennis Snyder** who manned the helm for many, many years, to **Mike Strebler**, who took over as Treasurer after serving as head of our Budget and Finance Committee. Mike had created the 10-year financial model that helped give us the confidence to make our new Museum acquisition, now more than five years ago.

Mike has done an extraordinary job over this past year. Not only did we change management, but we also changed systems.

Mike has instituted a new cash-based system after many years of being on an accrual system. It has added great clarity and understanding to our financial condition and helped better shape how and where we spend our money.

This is a MAJOR change for an institution like ours to undertake and would not have been nearly as smooth if not for the efforts of our Office Manager - **Lisa Neilson**. Her conscientiousness and commitment have been a joy to watch and much appreciated!

We also began changing our banking partner from Peoples Bank in Cambridge to National City that has an office in Cambridge but also in the Akron area where Mr. Strebler lives. This new bank has taken more of a partnership approach with us, not the least of which is providing us with a \$75,000 credit line. For an organization like ours, this would have been unheard of ten years ago.

Once again in 2006, we paid down \$7,600 on our museum mortgage. It now stands at \$26,400, a really remarkable accomplishment considering we bought a building for \$325,000 five years ago and have equipped it as a first class museum

with tens of thousands of dollars of furnishings.

Having a small measure of debt is a sensible part of a financial management strategy. I know this opinion is not universal, but time and time again it has been proven to help spur growth. In our case, it has provided a nice impetus for donations – which have been many and generous.

Given the equity we have in our building, we were comfortable making another landmark move this year – the acquisition of the Summit molds. Once this opportunity came to us, we quickly realized its significance and happily played a role in this important transaction.

The purchase price was \$50,000. Given the number of molds that we acquired, this was judged as a smart investment. Again, I'm sure there may be a few that dispute this, but our primary mission is preservation and this is one of the most important moves our organization has ever made. I am proud that your Board unanimously supported this action and was willing and able to move quickly when we had to.

*Continued on page 12*

## The Crystal Ball

PO Box 416 Cambridge, Oh 43725  
e-mail: cambridge@charter.net

### Staff

Executive Editor Helen Klemko  
Research Editor Les Hansen  
ebay Report John Peterson  
Advertising Manager Jeannie Moore  
Circulation Sharon & Joe Miller  
.....

An electronic version of this newsletter is available via e-mail Just contact us at cambridge@charter.net to start your free subscription. You will continue to receive the paper version as well.

Dealer Directory is \$24 for 12-months, size limited by box (see page 19). Includes listing on NCC website.

### Editorial Policy

Research materials submitted are subject to review by the Research Editor or other experts. All submissions are subject to editing for length, accuracy and conformity to norms of style, spelling, punctuation and grammar. No advertising will be accepted on behalf of candidates for NCC or other elected office, nor for or against any legislative matter before the NCC Board or membership.

Artwork must be submitted in electronic (jpeg, tiff or bmp) format, unless special arrangements have been made in advance with the editor. Photos must be minimum 300 dpi.

### Advertising Rates

1/8 page \$15                      1/4 page \$20  
1/2 page \$30                      Full page \$50  
(plus \$5 per photograph)

Classified Ads: 10 cents/word, with a \$2.00 minimum.

Electronic submissions should be emailed to ncccrystalball@charter.net. Use Word, PageMaker or Adobe PDF. Mailed submissions and all payments should go to PO Box 416 Cambridge OH 43725. Deadline is 10th of preceding month. Ads must be paid in advance. Show listings are FREE; send info to PO Box or e-mail address 60 days before event.

# From the Editor's Desk - passing the torch



By Helen Klemko

If you are reading this, you are looking at my FIRST publication of the Crystal Ball, and I must say that I am very proud of the result. You must understand that I have a finance background and am very comfortable preparing Excel spreadsheets, budgets, and financial information and my experience with publishing software of any kind is to ask someone else to prepare the publication.

A few months ago, I was approached to take over the Editorship of the Crystal Ball from Alex Citron who was leaving this position to follow his dreams. My first reaction was, Who Me! I had always enjoyed reading the Crystal Ball, but never thought much about how it was compiled. I thought long and hard about the prospect of learning a new piece of software and decided that I was up to the challenge and agreed to give it my very best effort. We should all thank Alex for the hard work he has put into this volunteer position over the years and Alex and I are working together to make sure that the standard remains high.

We have a wonderful museum and members who have a wealth of knowledge. We all should be very proud of the resources available to us from both those sources. The Crystal Ball plays such an integral role in keeping everyone informed and inspired. Many of our members do not have the opportunity of traveling to Cambridge and seeing firsthand the unbelievable displays at our Museum. However, the Crystal Ball cannot exist without input from our members.

Personally, I would like to see articles from all our members relative to their collections and experiences with Cambridge glass. When I was in school, my English teachers always taught us to think about the Who, What, When, Where and Why when writing an article or composition.

So, I am asking all our members to think about composing a few paragraphs telling others:

- Who you are;
- What you collect;
- When you started;
- Where you have found your favorite pieces, and
- Why you became interested in Cambridge glass.

All your experiences are of interest to others – please share.

I have set up an email address to receive any articles and other information you would like to send for possible inclusion in the Crystal Ball – namely [ncccystalball@charter.net](mailto:ncccystalball@charter.net).

In addition, do any of our members know of “young” people, maybe even in your own household, who collect Cambridge glass? We would love to hear from them. I would like to have an occasional feature showcasing their experiences. We need to encourage the next generation, as they are the caretakers of the glass we presently cherish. If you know of someone we could contact, please send that information to me also.

Steve (the other half) and I have been members since September 1991, so we have been around for awhile. We have only recently become dealers and this past year set up at the Convention's glass show. It seems that almost everyone who collects ends up being a dealer, otherwise the need arises to build a new wing onto the home.

In conclusion, with the changeover of the compilation of the Crystal Ball there are different fonts etc. between one computer and the other. If you see something that you don't like, please tell me.



**Your Editor needs informational articles, tidbits, personal experiences, etc. for possible inclusion in the March issue of the Crystal Ball - please send to [ncccystalball@charter.net](mailto:ncccystalball@charter.net)**

**SPRING  
DEPRESSION GLASS  
SHOW & SALE**

FREEPORT RECREATIONAL CENTER  
130 East Merrick Road, Freeport, LI, NY  
MAP ON REVERSE

**SATURDAY, MARCH 24, 2007 • 12:00 TO 6:00 PM**  
**SUNDAY, MARCH 25, 2007 • 10:00 TO 4:00 PM**

Door Prizes  
Reference Books  
Special Display

**Grand Prize**  
Luncheon Set  
OPALESCENT MOONSTONE

Free Depression Glass  
ID & Appraisal  
Sunday Only  
(Limit 6 Pieces)

**DONATION \$6.50 WITH THIS FLYER • 2 FOR \$6.00 EACH**

Sponsored By  
The Long Island Depression Glass Society, Ltd.  
For Information Call (516) 798-0492 Or Visit [www.lidgs.org](http://www.lidgs.org)

**Rosepoint  
Collector**

**Looking for  
Rare & Unusual  
Pieces**

**Call:**

**(888)470-7539**

By Cindy Arent

## Mixing the Batch

This month you will see and learn about a process that took place in the basement of The Cambridge Glass Company. These photos, donated by William C. Orme, help visualize perhaps the most important process in the making of fine handmade glassware.....the mixing of the batch.

The "batch" is the whole mixture of silica sand, lime, lead oxide, soda ash, manganese, etc. ready for placing into the clay pot. The clay pot was described in last month's issue of the Crystal Ball. The preparation of the "batch" was a very precise process.

The following information was stated in "The Art of Making Fine Glassware", copyright 1934 by The Cambridge Glass Company.

"In the making of Cambridge Glass, this exactness begins with the setting up of the original specifications for a given kind of glass. It continues in the

chemical laboratory where all the incoming materials are tested and analyzed. It follows through to the mixing room where giant weighing machines measure out the heavy materials and sensitive balances parcel out the finer ones, often in quantities as small as a single ounce for a batch weighing 2,000 pounds. The result is that a given grade of Cambridge glass is always the same – today, tomorrow, five years hence."

According to "The Art of Making Fine Glassware", the principal element in the batch was silica sand. Equally important was "cullet", which was composed of all the pieces of glass which failed to pass inspection, the tops removed from blown pieces, and all the glass that adhered to the glass working tools. At the Cambridge plant, the silica sand was thoroughly washed and calcined to remove all impurities.

It was then ground up into a fine, white powder.

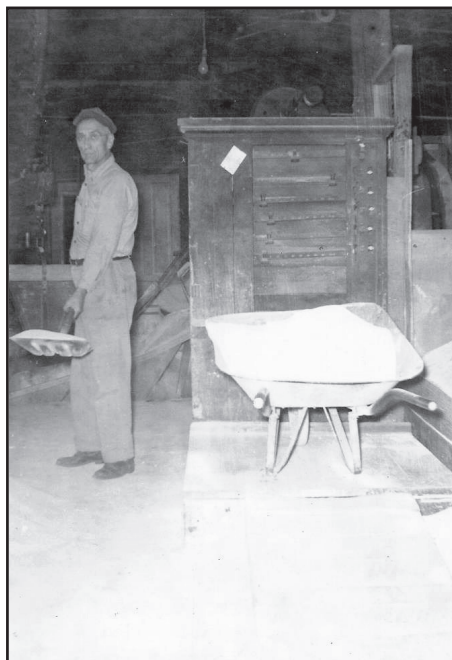
The batch was then placed in a steel car which remained in the mixing room until it was ready to be taken upstairs and shoveled into the clay pot waiting inside the furnace as demonstrated in the photo of Boston Miller.

After studying the photos and reading about how the batch was assembled, I now have a greater appreciation of Cambridge glass and look at it with even more admiration. I hope you will, too.

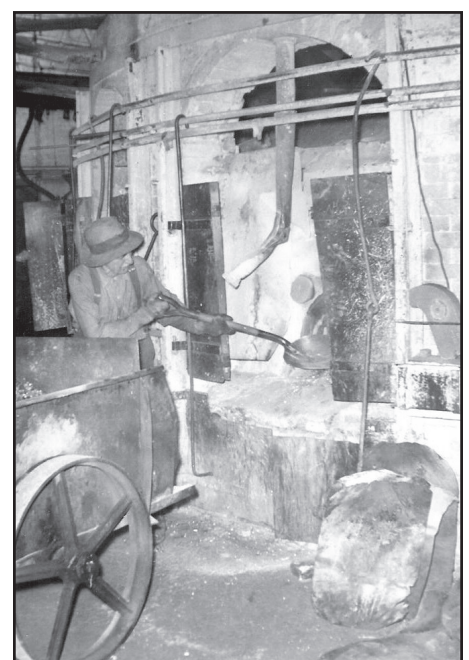
We are still working to find employees from The Cambridge Glass Company who can identify people in the photos from the Etching, Selecting and Hot Metal departments. There are more interesting photos to share in future issues of the Crystal Ball.



Cambridge Glass Company worker, George Sidenar, weighs material in a "hopper" which was attached to a large scale in the basement of the factory. This material would then be added to the batch.



Cambridge Glass Company worker, George Sidenar, is shoveling silica sand into a wheelbarrow on the large scale.



Cambridge Glass Company worker, Boston Miller, is shown shovelling the batch into the clay pot inside the furnace. Boston Miller was the great-great uncle of Linda Adkins and Nancy Misel.

# Minutes of the November 2006 Quarterly Meeting

The November Quarterly Meeting was held at the Holiday Inn in Cambridge, OH, on November 4, 2006. There were 74 people in attendance. President Rick Jones, called the meeting to order at 7:00 PM. We had two guests from the NDGA in attendance. The NDGA is placing a portion of their national collection in the display room at the museum for the upcoming year.

A motion was made by Mark Nye (second by Frank Wollenhaupt) to dispense with the reading of the minutes from the August Quarterly Meeting. Motion passed.

A motion was made by Mike Neilson (second by Steve Klemko) to approve the minutes from the June Quarterly Meeting as they appeared in the Crystal Ball. Motion passed

**Treasurer's Report:** Mike Strebler - Mike presented a very positive report on the current financial status of the club. Currently we have \$119,599.94 (\$60,529.75 – unrestricted; \$4,420.87 – restricted; \$54,648.92 – endowment ) in cash assets. This represents an increase of \$27,498.21 ( \$4,190.56 – restricted; \$23,307.65 – unrestricted ) from the beginning of 2006. Much of this increase is due to the success of the new Symphony Model for membership, the sale of the green Scotties, and the Silent Auction. The current mortgage is \$26,400 after a \$7,600 payment made in September.

**Acquisitions:** Lynn Welker – The Museum Acquisition Committee is allotted \$3,000 for acquisitions each year. Lynn purchased four items totaling \$3,000 for the museum. Three of the items are experimental controlled bubble pieces and the other is a piece of Jenny Lind in an experimental pale amethyst color.

**Membership:** Linda Adkins – NCC has a total of 1,011 members (5 lifetime; 7 honorary; 316 associate; 683 master). Debbie Robinson and Linda McLain will be added to the list of Honorary Members.

**Museum:** Cindy Arent – Cindy thanked the membership for all their donations for resale in the museum. William C. Orme

stopped by the museum this fall. A few weeks later, the museum received several original photographs of the Cambridge Glass Factory. On April 21, 2007, the NCC will be hosting the OHS Regional Meeting at the museum. The Cambridge Cordials will be participating in the Holiday Parade on November 25, 2006. There will be a Holiday Open House at the museum on December 2, 2006, from 1-4 PM. There are 69 NCC members in Guernsey and Noble County. Special invitations to attend the Open House will be mailed to them. Cindy thanked the members who loaned glass for the display rooms in 2006. The Cambridge Museum will be nominated for the Excellence in Tourism award. The winner will be selected from a 16 county area. On Saturday, January 20 and Saturday, February 17, NCC members are invited to work at the museum cleaning glass and cleaning cases. Work begins at 10:00 AM.

**Publications:** Mark Nye – Mark noted the NCC is working with Collectors Inc. to try to correct the color issues with Colors Book 2. The same issues NCC is experiencing can be found in other publications from Collectors Books. The second etchings book is available for sale. By spring, a new Rosepoint Book will be available with an updated price guide. In addition, 66 new items have been added. If the budget permits, there will be page of colored Rosepoint items.

**Publicity:** Lorraine Weinman – Lorraine indicated NCC is still involved with the Glass Pass. There is a new Glass Pass out. We have visibility at the McKinley Museum in Canton, OH. A videographer has been contacted at very affordable rate to video programs for NCC. We hope to be moving forward with this effort. New Glass Pass brochures are available. We have added some new members this year. The next meeting will be in April.

**Study Groups:** Judy Rhoads – Members of the new study group from Indiana were in attendance. A new Colorado study group is still forming.

**Auction:** Lynn Welker – The NCC Benefit Auction will be held the first weekend in March. The auction catalog will be published in the January Crystal Ball issue.

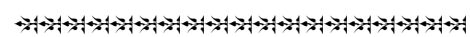
**Convention:** The 2007 convention will be held the fifth weekend in June. Forty rooms have been blocked out at the Comfort Inn for the 2007 convention. Contact the Comfort Inn if you are interested in obtaining one of these rooms.

**Glass Dash:** Larry Everett – Rick applauded Larry and members of the Miami Valley Study Group for the great job they do each year managing the Glass Dash. Larry invited anyone interested in setting up at the Dash to contact him.

**Crystal Ball:** Rick Jones reported that Alex will be leaving his position as Crystal Ball editor after the January issue. A replacement for the Crystal Ball editor is ongoing. Let Rick know if you are interested in this position.

**New Business:** Frank Wollenhaupt acknowledged the Miami Valley Study Group for their efforts in producing and selling DVD's of their most recent programs on Cambridge Glass. The sales of the DVD'S helped raise \$800. These funds are being donated to the NCC Endowment Fund. Additional copies of the DVD's are for sale in the museum.

Larry moved (second by Georgia Otten) to adjourn the Quarterly Meeting. Motion passed.



*February is "Valentine's" Month*

# The Calendar

*If you know about any upcoming glass shows or other glass events, please pass the word on to us at least six to eight weeks before the show dates. These listings are free of charge.*

## NCC Events

**2007 NCC Auction**  
 Saturday, March 3, 2007  
 ✂✂✂ ✂✂✂ ✂✂✂  
**2007 Convention**  
 June 27-30, 2007

### Upcoming Glass Shows & Other Glass Events

**February 10-11**  
 Washburns San Antonio Show  
 Live Oak, TX  
 E-mail: WashburnK@aol.com

**February 10-11:**  
 South Florida Show  
 Ft. Lauderdale, FL  
 Call: (305) 884-0335  
 E-mail:  
 fboches@cheshirecatantiques.com

**February 16-18:**  
 Superbowl Show of Shows  
 Rosenberg, TX  
 Call: (409) 762-4239  
 E-mail: wnsweeten@sbcglobal.net

**February 24:**  
 Green River Glass Show & Sale  
 Kent, WA  
 Call: (253) 852-5250  
 E-mail: kayswede@msn.com

**February 24-25:**  
 Arkansas Glasshoppers Show & Sale  
 Little Rock, AR  
 Call: (501) 375-0435  
 E-mail: esthermitchell@msn.com

**March 9-10:**  
 Mountain Laurel Glass Show  
 West Hartford, CT  
 Call: (860) 643-5353  
 E-mail: james.dwire@snet.net

**March 10-11:**  
 20-30-40 Society's Show  
 Northlake, IL  
 Call: (847) 394-2491  
 www.20-30-40society.org

**March 16-17:**  
 Heart of America Glass Show  
 Independence, MO  
 Call: (816) 561-4439  
 E-mail: dishbizz@aol.com

**March 24-25:**  
 Upper Midwest DG Show & Sale  
 Bloomington, MN  
 Call: (651) 770-1567  
 E-mail: firesidant@aol.com

**March 24-25:**  
 Long Island DG Society Show  
 Freeport, NY  
 Call: (516) 798-0492  
 E-mail: lidgs.org



South Florida  
 Depression Glass Club  
 33rd Annual Show & Sale

*American Elegant & Depression Glass  
 Dinnerware, Pottery*

February 10 & 11, 2007

War Memorial Auditorium  
 800 N.E. 8th Street  
 Ft. Lauderdale, FL

Saturday: 10 am - 5 pm  
 Sunday: 10 am - 4 pm  
 Admission \$6.50  
 (50¢ off with this ad)

*Directions: I-95 to Sunrise Blvd. East  
 turn south on US 1 for 2 blocks.*

*Information: (305) 884-0335  
 fboches@cheshirecatantiques.com*

### THE 20-30-40 GLASS SOCIETY OF ILLINOIS CHICAGOLAND'S ANNUAL DEPRESSION ERA GLASS SHOW AND SALE 8TH YEAR AT CONCORD PLAZA

**CONCORD PLAZA  
 MIDWEST CONFERENCE CENTER**

401 West Lake Street, Northlake, Illinois

**MARCH 10 & 11, 2007**

SATURDAY 20 a.m. - 5 p.m. and

SUNDAY 11a.m. - 4 p.m.

*Admission \$7 Per Person (\$6 with this ad, limit 2)*

**FREE PARKING WITH SHUTTLE BUS**

HEISEY, CAMBRIDGE, FOSTORIA, IMPERIAL, FENTON,  
 DUNCAN MILLER, PADEN CITY, TIFFIN, WESTMORELAND

CRYSTAL REPAIR - GLASS ID - REFERENCE LIBRARY -  
 DOOR PRIZES

Information prior to show date: (708)636-7661

WEBSITE: WWW.20-30-40society.org

# Study Group Reports

## Study Group #17

### *The Columbus Wildflowers*

On Thursday, December 7<sup>th</sup>, 2006, the Wildflowers had a wonderful evening of food and fun hosted by Rose MacConkey at our annual Christmas Party / Potluck / Gift Exchange. Our evening began at 6:00 pm with a fabulous dinner of honey baked ham with all the side dishes including a relish and nut tray, sweet potato casserole, green bean casserole, au gratin potatoes, cranberry salad and then desserts including apple pie and a variety of Christmas cookies.

In place of a formal meeting, our hostess, Rose MacConkey, alternated some humorous stories with very competitive Christmas contests. Rose read "The Little Red Hen" and then everyone played the "History Quiz" with anyone under 40 years old getting some bonus points. Ralph Warne was the winner of a snowman Chip and Dip set. Rose next read the funny story of "The Methodist Squirrels" and we had the "Cambridge Glass and Reindeer Contest" which was won by David Ray, who received a Reindeer accent rug. Then Rose read "Catholic Math" and we had a final contest of a scavenger hunt for candy canes, each with a number attached (some negative) and the highest scorer was JoAnne Lyle, who won a large Christmas

candle. We all had fun with Ken Nicol who actually ended up with a negative score on that one.

Next came our rowdy "Robber Gift Exchange" where we could choose a gift off the table or steal someone else's (and we were actually a little more civil this year!) But, after the dust settled, we all had wonderful gifts including: an Amber covered Candy; a Caprice footed serving plate with Silver City overlay; a pair of Amber Calla Lily Candlesticks; a Crystal Mount Vernon Comport with muddler stem; a Rosepoint 3 part footed Relish; a Light Emerald two part Keyhole Relish etched Appleblossom; and a two handled plate with Blue Enamel Rosalie.

We had one point of business that our friend, Helen Klemko, has accepted the position of Crystal Ball Editor, and has asked our group to think of contributing some articles in the upcoming year.

Our meeting concluded with an exciting Show and Tell of items which included: a Crystal Heirloom Pitcher; Heron flower frog; Crystal stem with Carmen stem and Crystal foot; a Carman Nautilus Shell Vase; Rosepoint Ashtray / Cigarette holder; an early black Amethyst cylinder Vase with beautiful enamel flowers; a Jade Pouse

Café ( made from the perfume bottom); a Moonlight Blue Alpine Candelabra with prisms and blue bobeches; a GIANT Flip Vase (12 inches tall and 7 inches across) etched Frieze; a Bluebell Salt and Pepper set; a Blue 2 or Ritz Blue Satinized Perfume with Beehive stopper; a Light Emerald Perfume with Beehive stopper and old Kresge label; an Amber Puff Box with silver overlay ship; two Amber Perfumes with unusual Bakelite feet; and a short Pink Decagon Ice Bucket with small enamel Roses.

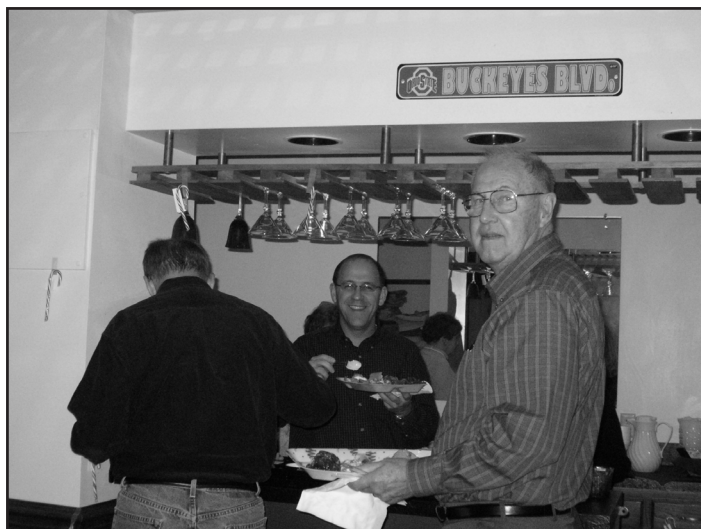
Everyone had a great time of friendship, fun and glass, and our January 4<sup>th</sup> meeting will be at the home of Linda Roberts with a topic of Puff Boxes. Our meeting adjourned at 10:00 pm.

The Wildflowers want to wish everyone a Very Happy New Year, and new members in the Columbus, Ohio area are always welcome and can contact either Linda Roberts at lrobert2@columbus.rr.com or Barbara Wyrick at bwyr@ee.net

—respectfully submitted by Barbara Wyrick, Secretary



Hostess Rose MacConkey and the Wildflowers study group enjoying an evening of glass, food and fun.



Bill Lyle, David Ray, and the Wildflowers enjoying a wonderful Christmas potluck.



# Study Groups:

The NCC has several study groups; these are the groups currently active and holding regular meetings. Listed below is contact information for these study groups.

If there is no study group in your area and you are interested in starting or joining a new study group, please contact NCC Study Group Advisor, Judy Rhoads at [kjrhoads@aol.com](mailto:kjrhoads@aol.com).

- #13 - Miami Valley Study Group**  
*Miami Valley area, Ohio*  
Larry Everett  
[db0098@dragonbbs.com](mailto:db0098@dragonbbs.com)  
(937) 675-6491
- #14 - The Cambridge Cordials**  
*Cambridge, Ohio*  
Lorraine Weinman  
[blweinman@hotmail.com](mailto:blweinman@hotmail.com)  
(330) 966-9376
- #15 - North Texas Cambridge Study Group**  
*Dallas area, Texas*  
Scott Pierce  
[scottpierce1@msn.com](mailto:scottpierce1@msn.com)  
(817) 427-9510
- #16 - Elegant Glass Collectors**  
*PA & NJ*  
Bill Dufft  
[billnvon@aol.com](mailto:billnvon@aol.com)
- #17 - The Columbus Wildflowers**  
*Columbus, Ohio*  
Barbara Wyrick  
[bwyr@ee.net](mailto:bwyr@ee.net)  
(614) 291-0361
- #20 - South Florida Study Group**  
*Miami, FL*  
Linda Gilbert  
[rosepointbabe@aol.com](mailto:rosepointbabe@aol.com)
- #21 - Crazy 'bout Cambridge Study Group**  
*Indiana*  
Beth Sarchet  
[bethsarchet@bluemarble.net](mailto:bethsarchet@bluemarble.net)

## Study Group #17

### The Columbus Wildflowers

On Thursday, January 4, 2007, the Wildflowers met at the home of Linda and Bryan Roberts at 7:00 pm. Refreshments of warm Brie with fruit and nut topping, spinach dip and assorted crackers, cheese and chocolates were served. Then later we enjoyed a wonderfully light Bavarian cream with raspberry topping.

Since we were gathered around the dining room table, we actually began the meeting with Show and Tell, since those items were already on the table. Show and Tell items included: a Crystal Snail vase, Carmen Stem with gold silkscreen decoration, a flared top Carmen Urn Vase, a Crystal Perfume with flashed treatment and possible DeVilbiss fitting which JoAnne Lyle got from her grandmother in Zanesville, 2 Hochs (one crystal with Royal Blue stem, one with Green stem), a Gold Krystal Turkey, an unusual square Vase from the mid to late 20's in Light Emerald with a gold encrusted Dresden Rose etch, and a puzzling Azurite Vase in an extremely unusual shape that could not be found in the catalogues, but had the right Azurite color and the double gold line decoration around the top.

Members also brought items for the program, so we moved into this month's program on Puff Boxes and Dresser items. Linda passed out a hand-out of puffs and dresser items showing a timeline, and we looked at the dates and type of items produced, and studied the actual items where possible.

The early teens had a variety of Cologne Bottles in a Nearcut style, as well as a few Ebony items and the #15 Puff Box and cover with the wreathlike Wedgewood etching.

In the 1920's, Cambridge got into some

of the more well known shapes, such as the #199 and #206 Perfumes with daubers and the little #585 with Beehive stopper in a variety of colors and decorations.

DeVilbiss bought Perfumes from various companies including Cambridge, and placed their fittings on them, and these are desirable by both Cambridge and Devilbiss collectors. One of their recognizable styles was the early large center Acorn fitting with arms on each side, and later a smaller Acorn. DeVilbiss usually signed either the collar of the fitting or a gold script on the bottom of the Perfume (but that may have worn off.)

Amber was a very popular color for Cambridge Perfumes during this time, and probably the most common colors seen are Amber and Light Emerald. We next saw an example of the #583 flat puff box with #732 Medallion on lid (the 732 etch is fairly common on Puffs), and the variation #578 with the knob on the lid. Sets often come with a Puff Box, two Perfumes and a Tray (or it could be a Perfume and an Atomizer), and there are a wide variety of #680 Dresser boxes. We looked at several including one in Bluebell with a gold encrusted Wildflower etch; Light Emerald with reverse etch Wildflower; Crystal with a blue enamel top with gold filled floral cutting; and Amber with a green celluloid top and floral design around the handle. We saw that the interior of the dresser boxes was specifically shaped to hold rouge, loose powder, and lipsticks. A variation is the #681 which has the Rose finial in place of the handle. A rarely seen and very desirable piece is the #665 - 4 piece Vanity, which has the tray cut out for the Puff, a lid, and an inset Perfume with dauber. We looked at some more Puff Boxes such as the round #582 in Amber with silver overlay ship on top, and a #581 Blue 2 with floral cutting. Footed Puff Boxes and Hair Receivers are many times seen in Amber with celluloid lids.

Continued on page 10

**The Columbus Wildflowers**  
(continued from Page 9)

The Bath Salt Jars from the same time period are very hard to find, and generally come in crystal or black. There is also a Jade-like one that is not Cambridge. And, we looked at an Avocado Inkwell that could be mistaken for a Perfume.

We moved into the Community line (from 1922 to 25) and saw a Pomade (shorter than the puff boxes), in the Carrera color with lots of fire and an Azurite Pomade with gold decoration. Other Community line colors include Avocado and Primrose.

Later, in the 1930's, we saw examples of the #18 Toilet Bottle in the Dark Emerald Mt Vernon line, and the #16 – 3 inch Toilet Box and cover, which has been reproduced. The lid in the reproduction item has a flower design right in the center.

Also in the 1930's, came the #3400 line and we looked at the 4 sizes: the 5 ½” Candy (of which the lid is the same as for the Nude Sweetmeat), the 4 ½” Puff with tilted lid on the side, the 3 ½” Puff with straighter lid, and the 2 oz Perfume (same size as the oil but with a full dauber, not just a stopper). You will sometimes see that Perfume set in filigree. It was interesting to note how the handle was set in very different places on the various 3400 Perfumes, from touching the neck, to a distinct space between the neck and body. The most common etchings on Perfumes are Apple Blossom, Portia and Diane, but any etched Perfume is a good one! And, from the same time period, we saw a Nautilus 1 ½ oz Perfume.

We also looked at some of the Yardley jars (made for holding cosmetics from the Yardley Company). These were made with Crown Tuscan bottoms (often a very dark, almost brownish color) with plastic lids.

Our last item was the Perfume Lamp, where a tiny drop of perfume was placed on top, and the heat from the light bulb sent the aroma throughout the room.

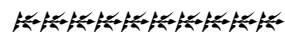
These also may have DeVilbiss fittings, and sometimes were decorated including the enameled Dragon etch.

Our informative meeting adjourned at 10:00 pm. Our next meeting will be February 1<sup>st</sup> at the home of Ken and Jackie Nicol, and the topic will be Pinch Decanters. We are always looking for new members in the Columbus, Ohio area and anyone interested in joining can contact either Linda Roberts at lrobert2@columbus.rr.com or Barbara Wyrick at bwyr@ee.net

—respectfully submitted by Barbara Wyrick, Secretary



**SPECIAL ANNOUNCEMENT**



For your viewing pleasure, the **Museum** will be open on the following days and times during the NCC Benefit Auction weekend:

**Friday, March 2:**  
Noon to 4 p.m.

**Saturday, March 3:**  
10 a.m. - 4 p.m.

**Auction Weekend Hotels**  
March Event is Just Weeks Away



- **Amerihost**  
State Route 209 South  
(740)439-1505  
(Indoor pool, in-room amenities)
  - **Best Western Cambridge**  
1945 Southgate Parkway  
(740)439-3581  
(Outdoor pool, in-room amenities)
  - **Holiday Inn Cambridge**  
2248 Southgate Parkway  
(740)432-7313  
(Outdoor pool, in-room amenities)
  - **Comfort Inn of Cambridge**  
2327 Southgate Parkway  
(740)435-3200  
(Indoor pool, in-room amenities)
- \$60 plus tax - Make sure you state you are with the Cambridge Glass Club**
- **Days Inn**  
2328 Southgate Parkway  
(740)432-5691  
(Outdoor pool, in-room amenities)
  - **Deer Creek Motel**  
2325 Southgate Parkway  
(740)432-6391  
(Indoor pool)
  - **Hampton Inn Cambridge**  
8775 Georgetown Road  
(740)439-0600  
(Indoor pool, in-room amenities)

# ebay Report

by John Peterson

This report is provided to keep members up with what's happening on the world's largest Internet Auction site. It is not meant as an educational tool, nor as a pricing guide, and we cannot guarantee the accuracy of listings herein.

**Friends, I would first this month like to note some printing errors in the January issue of the Crystal Ball E-bay Report. Aside from the "Miscellaneous" category not getting printed at all, the following two entries from the January report were fused together as one, totally misrepresenting both entries. They appear below as they were originally intended.**

*If you missed the auction that ended on 12/10, then you're not a true Cambridge maven. For, on that day, a supreme piece of glass was auctioned. Namely a #2374 vase in light emerald with Windsor etching and a wide and sweeping gold-encrusted border etch. There was also gold trim on the foot. This was an 11" vase and truly a spectacle. The final hammer price was \$1,000.*

*A magnificent set of 12 Tally-ho #1402/100 water goblets with Minerva etching and gold trimmed sold on 12/7 for \$222. What a bargain.*

Please accept my apologies and let's get on to this month's fabulous report!

\*\*\*\*\*

## NUDES

- January 6<sup>th</sup> saw the sale of a rare sized larger nude stemmed #3011/9 cocktail in Pistachio with 5½" crystal nude stem, for a total height of 7½". It sold for \$350.
- A gorgeous crystal #40 flying nude lady bowl sold on 1/3 for \$363. A stunning piece in all crystal.
- A #3011 nude stemmed ivy ball with a Royal Blue top and crystal stem and foot sold on 1/8 for \$334.
- On 1/7 a #3011/14 all crystal nude stemmed cordial sold for \$264. A gorgeous stem.

## CAPRICE

- A most fabulous #36 Caprice cake plate in Moonlight Blue sold on 1/5 for a reasonable \$610. It did have a couple of factory flaws. These plates are so difficult to find. They were made late and taken from the M.170 cake plate. They were made with

the Caprice pattern and a center peg for use as a 2-piece salver. Gorgeous!

- January 3<sup>rd</sup> saw the sale of probably my favorite piece of Moonlight Blue Caprice. It was the #112 twin salad dressing set with two Moonlight Blue ladles. Gorgeous. It sold for a respectable \$350. It was stated to be in the "mintiest" of mint condition.
- On 1/14 a set of 3 Moonlight Blue Caprice dinner plates with as stated, medium scratches in the center sold for \$180.
- A gorgeous #165 La Rosa (pink) Caprice covered candy did not sell for \$180 on 1/3. It had a "Best Offer" option but even that was not used (or accepted). It was stated to have a bit of roughness but no chips or cracks.



## FLOWER FROGS

- If you didn't see it sell, you may possibly have to wait a long time to see another one. They only show up once in a Moonlight Blue moon, that's for sure! I'm talking, of course, about the 8" Moonlight Blue Two Kids flower frog that did indeed sell on 1/3 for \$2,025. Just stunning.
- As well, on 1/3 a beautiful crystal frosted two-kids flower frog sold for \$155.
- Miraculously, on 1/10 a crystal seagull (is there any other color?) flower frog sold for \$41.

## SWANS

- A beautiful set of 12, yes 12, crystal swan punch cups sold for \$610 on 1/14.
- An 8½" crystal swan with a beautiful Charleton Roses and gold trim decoration sold on 1/15 at a final hammer price of \$264. (Photo opposite)
- What appeared to be an 8½" style 3 swan in crystal sold on 1/14 for \$132. The head appeared to be pulled a bit weirdly from one photo angle. But perhaps it was just the photo. WOW.

- On 1/15 an 8½" Crown Tuscan swan sold for \$151. Beautiful.
- On 1/7 a very beautiful large 10" Crown Tuscan swan in what appeared to be style 1, sold for \$128. The seller stated that it did have a ½" crack but it could've been a deep straw mark. WOW!

## ROSEPOINT

- A pair of marvelous #3400/38 ball tumbler's sold for \$134 on 1/5. Gorgeous.
- A gorgeous pair of #3121 candelabra sold on 1/7 for \$282, including etched bobèche's with all of their prisms. True beauties.
- Truly wonderful is the #1321 decanter with any etch, especially RosePoint. The auction of one on January 4<sup>th</sup> sold for \$382.
- And one of my all-time favorite pieces, the #3400/152 high-handled Doulton jug with RosePoint sold on 1/15 for \$268. A gorgeous pitcher and a piece that truly shows why Cambridge glass stands above the rest.

## OTHER ETCHES

- On 1/6, a most lovely atomizer in Azurite sold for \$400. It had a DeVilbiss top and also was gold trimmed and etched with the E769 etching. Similar to the auction-stated Adams etching, yet different. There was black enamel in the etching. Glorious. The atomizer mechanism itself was not complete but the glass was beautiful and seemingly perfect.
- January 4<sup>th</sup> was the sale date of what appeared to be either a 4-pint #110 or #56 flat-bottomed jug with Marjorie etching. It looked simply gorgeous. It sold after furious bidding at \$238.



*Continued on page 12*



# ebay Report

Continued from page 11

- Over the past couple of months, Diane seems to be the popular etching for ebay seller's. There have been some fabulous pieces up for auction.
- On 1/3 a #1261 French Dressing bottle not seen in many etchings other than RosePoint or Rosalie, closed for a grand \$187.
- And, on 1/15 an absolutely stunning and visually arresting #278 vase in crystal, gold-encrusted Diane sold for \$179. Truly, a spectacular vase on a most popular Cambridge blank.

## MISCELLANEOUS

- On 12/30, a gorgeous #1222 covered turkey candy box in amber sold for a respectable \$431.
- December 29<sup>th</sup> was the sale date of a marvelous and large 48 piece set of Cambridge Arms Parts. Many different pieces all selling for one money at \$432.
- A #1130 ebony vase with a very pedestrian sterling silver overlay decoration did not sell for the opening bid of \$498 on 1/13. It was stated to be in excellent condition. (Photo below)
- On January 3<sup>rd</sup>, a most beautiful NearCut Inverted Thistle tumbler in Amethyst Carnival glass sold for a whopping \$203. A most stunning and truly jaw-droppingly gorgeous piece of Cambridge NearCut Carnival glass.



## President's Message

Continued from page 3

Also, a landmark has been our change in the membership model to a more philanthropic approach. After thirty two years as an organization, this was a radical departure and quite a shift in culture. The net net though, after just the first year of implementation, is our combined revenues of membership and Century Club grew by more than 30%.

This remarkable accomplishment is totally due to all of you who love Cambridge Glass and sought to have our preservation organization be one of your top charities/causes you support. With dozens maintaining Century level support and seven joining the President's Circle, we have really been blessed.

As for 2007, we have major goals in membership. Clearly we want this Symphony Model to continue to grow and ask that you support at the level you can. Also, we want to grow the top number – the overall number of members. We have a number of new volunteers and a number of new initiatives that are in development. We really hope that these ideas gain traction and yield positive results.

We continue to grow our Endowment Fund. It passed the \$50,000 mark and will continue to get Century Club type support. Also, our Miami Valley Study Group keeps up their leadership by having some of their education initiatives benefit the Endowment. We thank them for this inspired type of support – not only in benefiting the Endowment Fund but also the smart creativity of their education programs. If you haven't purchased one of their DVD's, please do. You'll be glad you did.

Many members this year asked about our Heritage Society and many communicated to us that NCC is part of their Estate planning. This type of support is very critical to the endurance of our preservation mission and we hope you'll remember NCC in your estate plans.

Keeping the "house in order" theme, this issue marks the smooth transition of our CB management to our new Editrix, **Helen Klemko**. We hope you read her Editor's

letter this month and provide her the valued support she needs.

Sometimes, keeping things tidy does not mean change. This is the case of our Annual Benefit Auction where **Dorothy and Squeek Rieker** have effectively organized this event for what I think is now ten straight years. Aply aided by **Lynn Welker**, they have done an awesome job in every phase of this massive undertaking.

So too have **Larry and Susan Everett** in keeping our Glass Dash first class. The room is always full and the net revenues to the club consistently meet or beat the annual goals.

Another position that is somewhat below the radar is that of Publicity Chair **Lorraine Weinman**. She is always on top of things and willing to contribute in very selfless ways. Our programs and promotions have boosted attendance at the museum, spurred bus tours and helped build remarkable community relations in Cambridge – something we have long sought and can grow even more.

And finally, always "tidy" is our Museum. Thanks need to go to the Cambridge Cordials study group who spend this time of the year assisting **Cindy Arent and Carl Beynon** with the annual clean-up of the museum. Each case is meticulously cleaned and displays put into first class condition.

So when you visit the museum, take a look around and think of the hard work our local volunteers have put in this winter to keep the place looking tidy!

*Rick*

**PLAN NOW TO  
ATTEND THE NCC  
BENEFIT AUCTION  
SATURDAY,  
MARCH 3, 2007**

# Thank You, Century Club Contributors

As we begin the new year, we should take a moment to thank the 2006 Century Club members who have helped to support the National Cambridge Collectors, Inc. through the new Symphony Membership Model. Additional contributors who renewed their membership in December will be published in a later issue. The success of the National Cambridge Collectors, Inc. relies upon your continued support, and members are encouraged to consider pledging at the Mardi Gras (\$200); Japonica (\$500) or President's Circle (\$1,000) level in 2007.



David Adams  
Linda Adams  
Linda Adkins  
Joe Andrejczak  
Cindy Arent  
Mike Arent  
Robert Arnold  
Janet Bemiss  
Carl Beynon  
Shirley Beynon  
Sandra Buffenbarger  
Alex Citron  
Shelly Cole  
Dr. Evelyn Daniel  
Tarzan Deel  
Margaret Downing  
Robert Downing  
Marjorie Farlow  
Jane Filippini  
Ken Filippini  
Nancy Finley  
Jim Finley  
Dean Gattone  
Betty Glass  
Carter Glass  
Martha Ann Gould  
Arthur Gray  
Leslie Hansen  
Pauline Harris  
Patricia Harrison  
Fleur deLys Healy

Dan Heincy  
Patty Igoe  
Doug Ingraham  
Lois James  
Patricia Janecek  
Jenan Jobst  
Randall Johnson  
Cindy Jones  
Rick Jones  
Dorothy Kell  
Marjorie Kleeman  
Donna Kleintjas  
Helen Klemko  
Steve Klemko  
Willard Kolb  
Gerald Kuczewski  
John Lacy  
David Lake  
Kathy Lake  
Dr. J.T. Lanning  
Bonnie Lippy  
Dwayne Lippy  
Mildred Loucks  
Rose MacConkey  
Mrs. H.C. Mason  
Joy McFadden  
Joe Miller  
Sharon Miller  
Carolyn Sue Mitchell  
Elizabeth Moe  
Loretta Moss

Barbara Namon  
Kathryn Nussbaum  
Shelby Nussbaum  
Mary Pfanenstiel  
Bonnie Quaintance  
Dorothy Rieker  
Squeek Rieker  
Richard Rietz  
Dr. Barbara Ritchin  
Patricia Rutledge  
Beth Sarchet  
Pat Schmidt  
Ray Schmidt  
Lisa Strebler  
Mike Strebler  
Leslie Taylor  
Richard G. Taylor  
Marybelle Teters  
Luene Torner  
James Van Skiver  
Rita Van Skiver  
Julia Wall  
Betty Wanser  
Deena Warren  
Charles Weeks  
Loretta Weeks  
Lynn Welker  
Mary Welker  
Florence Willmot  
Kathie Young  
Ricky Young

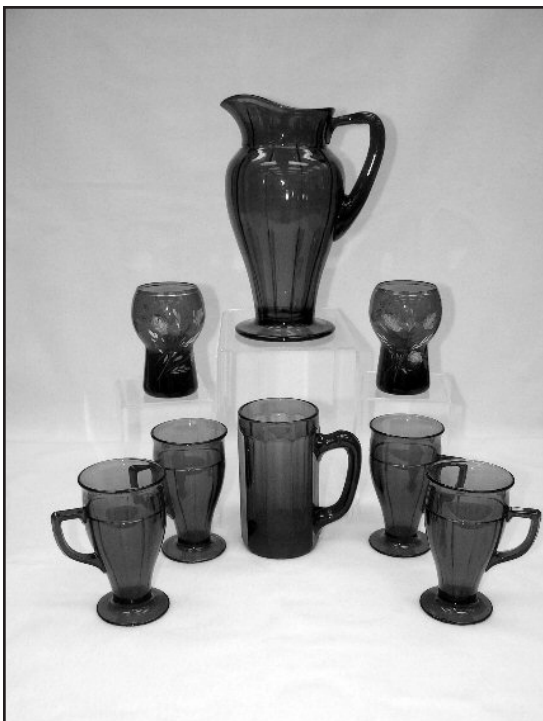
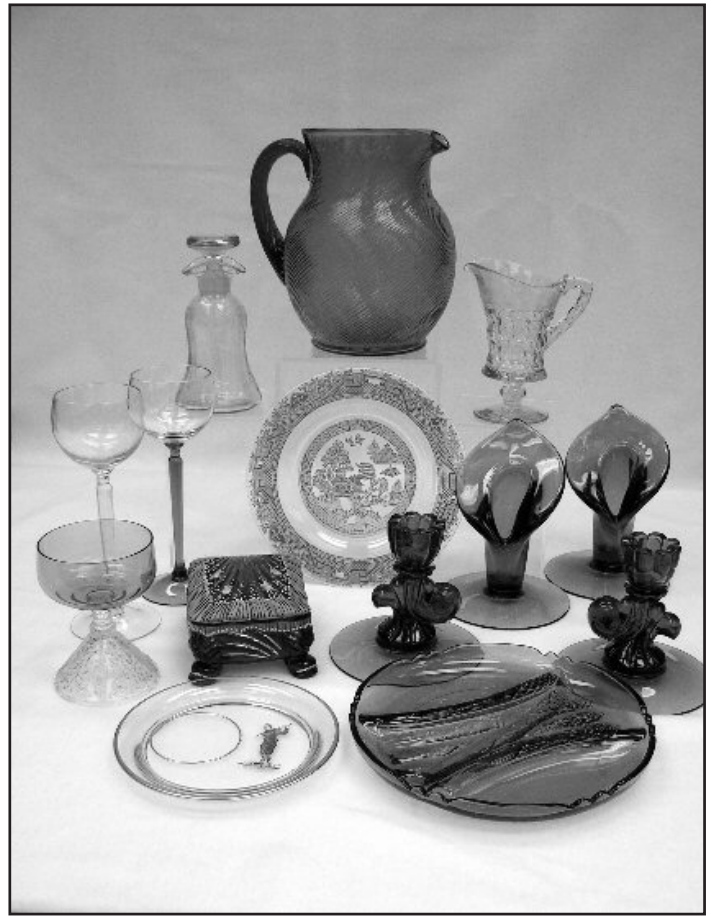
## Lamps and a selection of Crown Tuscan (including decorates) available in this year's NCC Benefit Auction



**Swans, vases, urns, candlesticks, stems - items offered in the  
NCC Benefit Auction - March 3, 2007**



**More spectacular glass offered in this year's NCC Benefit Auction -  
March 3, 2007**



# NCC Merchandise

## Scotty Dog Bookends

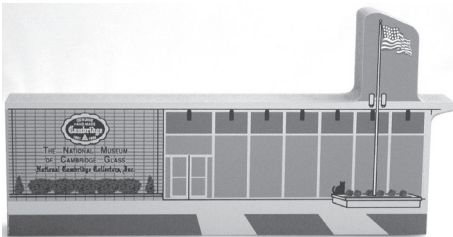
\*\*\*\*\*



\$112/pair  
Cobalt Blue  
includes shipping



## Cat's Meow: NCC Museum



\$20



## Vaseline Prism Sign

2005 Convention Favor



\$15 each

## Salt & Pepper Tops

\*\*\*\*\*

Polycarbonate plastic will fit most Cambridge shakers, such as Rosepoint footed and flat-bottom shakers. They also fit Heisey Rose, Saturn, Plantation, Crystalite and some Orchid. Fit some Anchor-Hocking and Candlewick.



\$6/pair

Order 20 pair (or more) and pay only \$5 per pair.



## NCC Logo Pin



\$5 each



## Comemorative Tape Measure

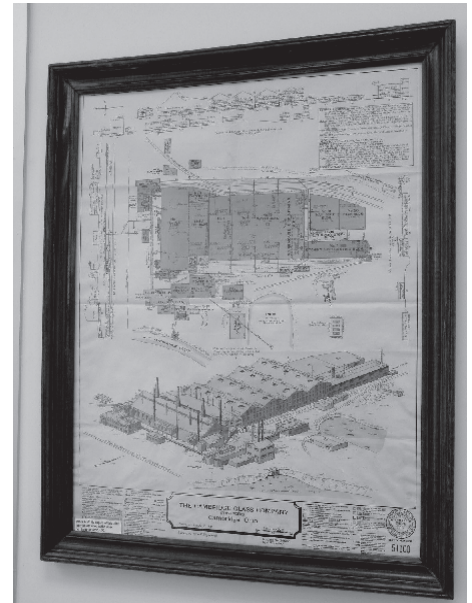
Issued for the Grand Opening of the National Museum of Cambridge Glass



Special...\$1 each

## Factory Map and Elevation

Reproduced from the original, which hangs in the NCC Museum



\$12.50 each



## "The Crystal Lady"

Copy of an original Cambridge Glass promotional film; shows the manufacture of a goblet.

VHS or DVD \$15



## "Primrose"

## Prism Sign

2006 Convention Favor

\$15



Book and Merchandise Sales thru the NCC Website are back on-line. To order, go to [www.CambridgeGlass.org](http://www.CambridgeGlass.org) and click on Members-Only.

### Send orders to:

NCC • PO Box 416 • Cambridge, OH 43725

OHIO RESIDENTS PLEASE ADD 7% SALES TAX

Please include your name, complete mailing address and your phone number or e-mail address. Payments by check or Money Order only, payable to NCC.

### How to Order

#### SHIPPING/HANDLING:

All items (including books) <b>except</b> Scottys:	
Total order up to \$6	\$1.50
\$6.01 to \$25.00	\$4.50
\$25.01 to \$50.00	\$5.50
\$50.01 to \$75.00	\$6.50
Over \$75.00	\$8.50



# Books for Sale

*Published by NCC • Members receive a 10% discount • **CLICK ON BOOK TITLE TO ORDER THRU NCC WEBSITE***

TITLE		REGULAR PRICE	MEMBER PRICE
<b>1910 NearCut Catalog Reprint</b>	108 pages, paperback with 2004 price guide	\$14.95	\$13.45
<b>NearCut Value Guide</b>	(when purchased separately)	\$3.00	\$2.70
<b>1930-34 Catalog Reprint</b>	250 pages, paperback with 1997 price guide	\$14.95	\$13.45
<b>1930-34 Catalog Index</b>		\$2.00	\$1.80
<b>1949-53 Catalog Reprint</b>	<b>JUST RE-ISSUED</b>	\$19.95	\$17.95
<b>1956-58 Catalog Reprint</b>	160 pages, paperback, no price guide	\$12.95	\$11.65
<b>NEW... Cambridge Colors II</b>	Hardcover with price guide	\$19.99	\$17.99
<b>Caprice</b>	200 pages, paperback with 2003 price guide	\$19.95	\$17.95
<b>Caprice Value Guide</b>	(when purchased separately)	\$5.00	\$4.50
<b>Decorates</b>	136 pages, paperback, no price guide	\$14.95	\$13.45
<b>NEW... Etchings (2nd Edition)</b>	<b>Now available</b>	\$17.95	\$16.15
<b>Etchings, Non-Catalogued</b>	70 pages, paperback, no price guide	\$12.95	\$11.65
<b>Etchings: Blossomtime</b>	26 pages, paperback, no price guide	\$7.95	\$7.15
<b>Etchings: Candlelight</b>	30 pages, paperback, no price guide	\$7.95	\$7.15
<b>Etchings: Chantilly</b>	44 pages, paperback, no price guide	\$7.95	\$7.15
<b>Etchings: Diane</b>	53 pages, paperback, no price guide	\$7.95	\$7.15
<b>Etchings: Elaine</b>	64 pages, paperback, no price guide	\$9.95	\$8.95
<b>Etchings: Portia</b>	57 pages, paperback, no price guide	\$7.95	\$7.15
<b>Etchings: Wildflower</b>	42 pages, paperback, no price guide	\$7.95	\$7.15
<b>Rock Crystal Engravings</b>	119 pages, paperback, no price guide	\$17.95	\$16.15
<b>Rock Crystal Engravings (Listings)</b>	Companion to above; lists all pieces in all patterns	\$9.95	\$8.95
<b>Rock Crystal 1940 Price List</b>		\$14.95	\$13.45
<b>Rosepoint</b>	94 pages, paperback with 2004 price guide	\$14.95	\$13.45
<b>Rosepoint Value Guide</b>	(when purchased separately)	\$5.00	\$4.50

**Other Publications • No discounts:**

TITLE	REGULAR PRICE
<b>Glass Candlesticks: Volume I - Akro Agate thru Fenton .....</b>	\$24.95
<b>Glass Candlesticks: Volume II - Fostoria thru Jefferson .....</b>	\$24.95
<b>Glass Candlesticks: Volume III - Kanawha thru Wright .....</b>	\$29.95
<b>Charleton Decorations .....</b>	\$29.95
<b>1903 Cambridge Catalog Reprint .....</b>	\$6.00
<b>1927-29 Cambridge Catalog Reprint (with 1996 Price Guide) .....</b>	\$9.95
<b>1927-29 Value Guide (when purchased separately) .....</b>	\$3.00
<b>1940 Cambridge Catalog Reprint (unbound, on 3-hole paper) .....</b>	\$25.00
<b>Binder for 1940 Catalog .....</b>	\$5.00
<b>Reflections: A History of Guernsey County Glass Production .....</b>	\$5.00
<b>Cambridge Stemware by Mark Nye .....</b>	\$19.95
<b>Welker's Volume II (color plates showing pieces from private collection) .....</b>	\$5.95
<b>The Art of Making Fine Glassware .....</b>	\$4.00
<b>Glass Animals (2nd Edition) .....</b>	\$24.95
<b>Kitchen Glassware of the Depression Era (6th Edition) by Gene Florence .....</b>	\$24.95
<b>Collectible Glassware from the 40's, 50's &amp; 60's (7th Edition) by Gene Florence .....</b>	\$24.95
<b>Treasures of Very Rare Depression-Era Glass by Gene Florence .....</b>	\$39.95
<b>Elegant Glassware of the Depression Era (11th edition) by Gene Florence .....</b>	\$24.95

### How to Order by Mail or from the NCC Website

<p>Send orders to: NCC • PO Box 416 • Cambridge, OH 43725</p> <p>OHIO RESIDENTS PLEASE ADD 7% SALES TAX</p> <p>Please include your name, complete mailing address and your phone number or e-mail address.</p> <p>Payments by check or Money Order only, payable to NCC.</p>	<p style="text-align: center;">SHIPPING/HANDLING RATES ON PAGE 16</p> <p><i>Books may also be purchased on the NCC website, in the Members-Only Section. Major Credit Cards are accepted only on web purchases.</i></p> <p><i>See page 20 for website address, user name and password.</i></p>
--	--



## Stems Without Thorns

As the world's largest supplier of old & new china, crystal, silver and collectibles, Replacements, Ltd. has more than 700 different patterns of Cambridge crystal.

And however much we enjoy selling pieces that were once thought irreplaceable, we love buying them as well. Thanks to people like you, our crystal inventory currently numbers in the hundreds of thousands, and the numbers keep growing every year.

So, if you've been unsuccessfully searching for that elusive piece of Cambridge - or any other type of fine crystal - call us for a free list of pieces available in your pattern. And, if you're looking to sell pieces you currently have, we can help you there, too.

## REPLACEMENTS, LTD.

China, Crystal & Silver • Old & New

**1-800-REPLACE**  
**(1-800-737-5223)**

1089 Knox Road  
PO Box 26029, Dept. CB  
Greensboro, NC 27420  
[www.replacements.com](http://www.replacements.com)

# Classified Ads



**BUY, SELL, COMPLETE A SET.....your ad can run here for as little as \$2. Reach over 1,000 avid collectors of Cambridge Glass. See page 3 for details or email**

**[nccrystalball@charter.net](mailto:nccrystalball@charter.net)**



## DEALER DIRECTORY

THE DEGENHART PAPERWEIGHT  
AND GLASS MUSEUM, INC.

P.O. Box 186  
Cambridge, OH 43725-0186

Intersection of US 22 & I-77  
Phone 740-432-2626

### Cherished Collectibles

Shopping 24 hours in our online store  
Glassware, Figurines, Collectors' Plates  
[www.tias.com/stores/chercoll/cher@cherished-collectibles.com](http://www.tias.com/stores/chercoll/cher@cherished-collectibles.com)  
Elegant and Depression Era Glass

Dee and Tony Mondloch  
Phone: 850-747-8290 [glass01@knology.net](mailto:glass01@knology.net)  
1609 Clay Ave. Panama City, FL 32405

### Precious & Few

Tiffin and Duncan & Miller Glassware,  
Other Elegant Glass, Antiques, Collectibles  
Shop: [www.apreciousfew.com](http://www.apreciousfew.com)

**YOUR AD COULD BE HERE  
REACH THOUSANDS OF  
COLLECTORS  
ONLY \$24 PER YEAR  
SEE PAGE 3**

### GREEN ACRES FARM

2678 Hazelton Etna Rd.  
Pataskala, OH 43062  
(State Route 310 North)

Sat & Sun 1-7 pm 740-927-1882  
Antiques, Crystal Glass & Collectibles

### THE GLASS URN

456 West Main Street, suite G  
Mesa, AZ 85201 480-833-2702  
480-838-5936

Mail Order Open Shop

CAMBRIDGE, FOSTORIA, HEISEY, etc.

Fostoria Glass Society of America  
Traveling Ambassadors  
**Ralph & Joyce Rider**

For info: 817-545-5856  
E-mail: [r.rider@sbcglobal.net](mailto:r.rider@sbcglobal.net)

John **Burlingame** Betty  
Visit our booth (B-6) in  
**DELILAH'S**

301 1st Street Sanford, FL 32771  
Antiques, glass, pottery, collectibles, etc.  
cell 386-212-7121 tel 407-330-2272

### Max Miller

Elegant Glassware • Books • Fiesta  
...and more  
THE MARKET PLACE  
(713) 467-0450 - BUS 10910 OLD KATY RD.  
(713) 461-1708 - RES HOUSTON TX 77043  
[MMXGLASS@aol.com](mailto:MMXGLASS@aol.com)

**virtualattic at the glass chalet**  
specializing in elegant depression era glass

Sandra L. Bridwell-Walker PO Box 3448  
**William P. Walker** Cleburne TX 76033-3448  
Phone: 817-202-0940  
Sandy's Cell: 817-559-0328  
Bill's Cell: 817-357-7084  
[www.virtualattic.com](http://www.virtualattic.com)  
[virtualattic@sbcglobal.net](mailto:virtualattic@sbcglobal.net)  
[theglasschalet@sbcglobal.net](mailto:theglasschalet@sbcglobal.net)

## Remember...

When writing to these dealers,  
please include a self-  
addressed, stamped envelope.



John & Peggy Scott  
Scotland Ridge Farm  
PO Box 1001  
Aurora, MO 65605


**SCOTTY'S ANTIQUES**  
Elegant Glassware of the Depression Era  
Mainly Cambridge and Florence Ceramics  
Retirement: Selling all inventory  
at reduced prices

(417) 678-0624  
[scottjnp@aol.com](mailto:scottjnp@aol.com)

# DEALER DIRECTORY

When writing to these dealers, please enclose SASE

**DAUGHERTY'S ANTIQUES**  
Antiques and Collectibles



Specializing in  
Depression Era, Elegant and Pattern Glass  
Porcelain, Pottery and old books

402-423-7426  
www.daugherty-antiques.com  
sdaugh2515@daugherty-antiques.com

Jerry and Shirley  
Daugherty

**Milbra's Crystal** Buy & Sell

Replacement and Matching  
Milbra Long (817) 645-6066  
Emily Seate (817) 294-9837  
PO Box 784  
Cleburne TX 76033

Specializing in  
Cambridge,  
Fostoria, Heissey  
and others

E-mail: longseat@sbcglobal.net  
www.fostoriacrystal.com

**BARNESVILLE ANTIQUE MALL**  
open 7 days, 8 - 5  
**Nancy and Brian Mayhugh**  
Owners

202 N. Chestnut St. 740-425-2435  
Barnesville, Ohio 43713 3 floors  
EXIT 202 OFF I-70 • always buying & selling antiques

**ALADDIN LAMP BOOKS**  
Free History of Aladdin Lamps  
Figurine Lamps Wanted  
Bill & Treva Courter  
brtknight@aol.com

3935 Kelley Rd. Phone 270-488-2116  
Kevil, KY 42053 FAX 270--488-2116

**THE GLASS CUPBOARD**

155 Blake Blvd. (Apt 215B)  
Pinehurst, North Carolina 28374

Bob & Marcia Ellis Cambridge Show  
910-295-2821 and Mail Order

**B&H ANTIQUE MARKETPLACE**  
3739 Highway 29 North  
Danville, VA 24540  
(434) 836-4636  
www.bhantiqueauctions.com

Cambridge • Heissey • Duncan • Fostoria  
Open Thur-Sat 11:00 to 5:00 (seasonal hours apply)

**Glass Menagerie Antiques**  
Your Website for quality Glass from  
the 20's, 30's, 40's & 50's.  
**www.glasstresurechest.com**

**BAKER FAMILY MUSEUM**  
805 CUMBERLAND ST.  
CALDWELL, OHIO 43724  
740- 732-6410  
bakermuseumnellbaker@msn.com

Wed & Thurs 9-4; Fri - Sat 9-5

**CRYSTALLINE COLORS**  
Cambridge • Fostoria • Elegant Glass

Riverfront Antique Mall  
New Philadelphia, OH (I-77, exit 81)  
Booth #'s 626 and 616

Lynne R. Franks 216-661-7382

**CRYSTAL LADY**  
Thurs. - Sat. 11-5  
1817 Vinton St. Omaha, NE 68108  
**Bill, Joann and Marcie Hagerty**  
Shop 402-341-0643 Home 402-391-6730

Specializing in Elegant Glass & Collectibles  
www.crystalladyantiques.com

**Storck's Antiques**  
**Rick & Joyce**

Antiques & Collectibles • Glass & Pottery  
Specializing in Fenton, Imperial & Cambridge  
Shows & Mail Orders • Storck1@aol.com  
Greenfield, MN 55373 • (763) 477-6415

**Mother Drucker's**  
**Penny Drucker**  
Specializing in Elegant Glassware  
Shows & Mail Order

PO Box 50261 (949) 551-5529  
Irvine, CA 92619 (888) MDRUCKER  
www.motherdruckers.com

**Deborah Maggard, Antiques**

Specializing in Cambridge Glass,  
American Hand-Made Glass & Victorian Art Glass

We buy one piece or entire collections.  
Please contact me at 440-247-5632  
debbie@deborahmaggardantiques.com

P.O. Box 211 • Chagrin Falls, OH 44022

**GLASS FROM THE PAST**  
Maureen Gillis



www.glassfromthepast1.com  
email: maureen@glassfromthepast1.com

**JUDY'S ANTIQUES**  
Judy Bennett  
422 S. Ninth Street (corner of Jefferson)  
Cambridge, Ohio 43725

Business (740) 432-5855  
Residence (740) 432-3045  
**CAMBRIDGE GLASS MY SPECIALTY**

**BRIDGES THRU TIME**  
Antiques & Elegant Glassware & Collectibles  
Member of Greater Houston BBB  
Located at Olde Carriage Shoppe  
810 2nd Street • Rosenberg, TX 77471  
**For Web-Storefront and Auctions**  
Website: http://www.bridgesthrutime.com  
E-mail: imwolf@sbcglobal.net

Mon. thru Sat. 10 - 5:30 • Sunday 12 - 5:30


**Bogarts' Antiques**

BUY • SELL • APPRIASE • REFINISH • CANE & REED CHAIRS  
CLOCK REPAIR

Jack & Sharon Bogart ST.RT. 40  
740-872-3514 shop 7527 EAST PIKE  
740-826-7439 home NORWICH, OHIO  
43767

**BOGARTSANTIQUES@CORE.COM**

**Mary Jane's Antiques**  
Early American Pattern Glass  
Depression Era Items



2653 Burgener Drive (217) 422-5453  
Decatur, IL 62521 mjhumes@aol.com

**THE GLASS HOUSE ANTIQUE MALL**  
Furniture, Pottery, Glass  
Antiques and Collectibles  
I-70 Exit 146, East on SR 40

8825 E. Pike  
Norwich OH 43767 TEL 740-872-3799

**GATEWAY ANTIQUE MALL, INC.**  
JUST NW OF MINNEAPOLIS-ST.PAUL, MN  
Next to Super 8 in Rogers, MN  
(I-94/101 intersection)

Multi-Dealer  
7 days; 10am - 6pm • 763-428-8286  
ELAINE STORCK, OWNER/DIRECTOR

**ISAACS ANTIQUES**  
(740) 826-4015

See our booths in Penny Court Mall in  
Cambridge and at White Pillars Antique Mall  
(Route 40, one mile west of  
I-70 Norwich, OH • Exit #164)

**PENNY COURT MALL**  
637 Wheeling Avenue  
Cambridge, Ohio  
100 Booths 15,000 sq ft

HOURS: Daily 10-6 Sunday Noon-5  
Closed: Easter, Thanksgiving, Christmas

Call for other holiday hours 740-432-4369

**MARGARET LANE ANTIQUES**  
2 E. Main St. New Concord, OH 43762  
Lynn Welker (740) 826-7414

Cambridge Glass Matching Service  
Hours: Mon-Fri 10-12 AM, 1-5 PM  
or by appointment

**Our House Antiques**  
Linda & David Adams  
Las Vegas, NV



702-838-1341 or  
800-357-7169  
Web: www.OurHouseAntiques.com  
E-mail: David@OurHouseAntiques.com

# Additional NCC Merchandise

\*\*\*\*\* NEW ITEM \*\*\*\*\*

## Frosted Cobalt Scotty Dog Bookends

**A photo of the Frosted Cobalt Scotty Dog Bookend was unavailable at printing time. Check your March issue for an update.**

**\$110/pair  
Plus \$12 shipping & handling; sales tax if applicable.**

## Logo Patch



This attractive, embroidered Cambridge Logo Patch was produced by the Elegant Study Group to benefit NCC.

It measures 2" by 3.5" and can be ironed or sewn onto almost any fabric

**\$5 each**

## Educational DVD's

by the Miami Valley Study Group

◆ **Cambridge Glass & All that Jazz**  
Presented at the 2004 NCC Convention; it covers Cambridge Glass patented, introduced or featured in the years 1925 thru 1930. Runs 25 minutes. **\$13.00**

◆ **Cambridge Glass: Ladies and All**  
Presented at the 2006 NCC Convention; covers the years 1931 and 1932. Runs 38 minutes. **\$18.00**

◆ **Special: Both DVD's for one low price \$29.00**

\*\*\*\*\* Refer to Page 16 for Ordering Information \*\*\*\*\*

### Change of Password

~~~~~

Effective February 2007, please access the NCC Website - Members Only Section as follows:

**User Name: NCC**

**Password: CarmeN**

(case-sensitive, **MUST** be entered as shown)

### Websites

- **NCC WEBSITE**  
[www.CambridgeGlass.org](http://www.CambridgeGlass.org)
- **NCC WEBSITE - MEMBERS ONLY SECTION**  
[www.CambridgeGlass.org/NCCmembers](http://www.CambridgeGlass.org/NCCmembers)  
(User Name: NCC • Password: CarmeN)
- **MIAMI VALLEY STUDY GROUP WEBSITE**  
[www.mvsg.org](http://www.mvsg.org)

*Membership Renewal Notice: If the date above your name is 2-07, this is your last issue, and your NCC Membership has expired. Please renew today.*

National Cambridge Collectors, Inc.  
PO Box 416  
Cambridge OH 43725

website: [www.cambridgeglass.org](http://www.cambridgeglass.org)  
e-mail: [ncccrystalball@charter.net](mailto:ncccrystalball@charter.net)  
(not for address changes, please)

**FIRST CLASS MAIL  
US POSTAGE  
PAID  
PERMIT No. 3  
CUMBERLAND OH 43732**

**FIRST CLASS MAIL**